



# NEW PARADIGM LOVING ACADEMY

## School Pledge

Right now today, this very moment, I am capable of giving myself, the gift of absolute self-assurance, self belief, and powerful non-stop confidence in myself

FAMILY

VOLUME 22

WEEK OF 2/6/2023

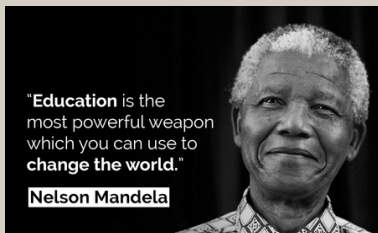
## To, Through, and Beyond College

### "Impact and Outcome"

Happy Monday Families!!!

Hopefully your weekend was great! A number of students are arriving to school tardy daily, which is impacting their reading grade. Students are tardy after 8:05. Attendance plays a vital role in the academic success of each student. Teachers will be sending out email notifications to inform parents of academic challenges your student may be encountering. If you have any questions or concerns, please reach out to me at aringo@npfeschools.org or send a message to (313) 751-8533.

Ms. Ringo  
Principal



## Weekly Reminders

Monday- C3 and RR sent home

Tuesday-Virtual Tutoring @ Loving from 4:30-5:30

Wednesday- COUNT DAY

Thursday- Virtual tutoring @ 4:30

Friday-C3 and RR is due

### UPCOMING DATES

February 15-Half Day/Staff P.D.

February 20-24-Mid Winter Break

February 28-Black History Program

Please use the link for re-enrollment

<https://forms.gle/ZhSGHgXWXet4oQR8>

### Instructional priorities

Reading, writing, and discussion in all content areas to provide cohesive instruction and opportunities for productive struggle.

Provide effective feedback to students that affirms what they have done well and guides them toward academic improvement and achievement of learning goals.

Study and leverage student-level data on a regular and consistent basis to identify learning opportunities and create plans to address them.

Use rubrics as tools to provide a shared language with clear guidelines and expectations to provide a measure, adjust, and evaluate learning

## ATTENDANCE MATTERS

All day. Every day.

It adds up...  
EVERY tardy  
+ EVERY early check-out  
+ EVERY absence

EVERY MINUTE COUNTS  
towards reading on grade level





Shout out to all the parents who attended the fire safety meeting and received two smoke/carbon monoxide detectors

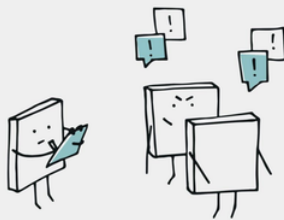
Shout out to all the Pretty Brown Girls who attended the kickoff

## Schoolwide

### Cooperative Challenge

"Demonstrate a Focusing Strategy"

Turn your eyes, ears, and brain on high and pay very close attention



## Staff Contact List

Ms. Ringo, Principal  
aringo@npfeschools.org

Ms. Coleman, Student Support Specialist  
lcoleman@npfeschools.org

Ms Ringo, First

Ms. Milton, 2nd/3rd  
jmilton@npfeschools.org

Mr. Brazill, 4th/5th  
rbrazill@npfeschools.org

Mr. Jackson, PE  
jjackson@npfeschools.org

Ms. Shelman, Director of Specialized Services  
nshelman@npfeschools.org

## Black History Fact

Supreme Court Justice: Thurgood Marshall was the first African American ever appointed to the U.S. Supreme Court. He was appointed by President Lyndon B. Johnson and served on the court from 1967 to 1991.

## **Deans List**

***Families, we adopted a new way of parent communication. It is used by our teachers to send out important messages in regards to behavior, grades, etc. Please take a moment to download the app or use your browser to sign up on your computer***

**DeansList for Families website**

**<https://youtu.be/bS54-TbScY8>**

**DeansList for Families Mobile App**

**<https://youtu.be/Pof0GNOf0Rg>**

## Weekly Homework Data

Week of 1/30/23	First Grade	Second Grade	Third Grade	Fourth Grade	Fifth Grade
Read and Response	81%	57%	80%	78%	63%
C3	81%	57%	80%	78%	50%



**M-Step**

We have approximately **9 weeks/70 days** before Michigan's annual six-week testing season begins in April. M-Step is a high stakes assessment! Attendance, daily instruction, tutoring and intervention will be critical. Let's be focused and ready to take action everyday! The results of the various assessments can influence college admissions, teacher evaluations, and whether third-graders are promoted.

## Resources to Support Students at Home

**Edmentum.org- school intervention**

Students know their log in information

**<https://www.khanacademy.org/-math support>**



# New Paradigm Loving Academy

## 2022-2023 Calendar

### NP Loving Academy

August 2	New Staff start date
August 8	Staff Returns
August 1-27	Staff Professional Development
<b>August 29-Sept 1</b>	<b>First week ½ day for Students/Staff PD</b>
September 2-5	Labor Day Weekend – School Closed
September 6	Return to School
September 12	Preschool First Full Day of School
September 17	Ice Cream Social
September 28	½ day for Students/Staff PD
October 5	Count Day
October 20	½ day – Parent/Teacher Conference 1p-6p
November 4	End of Quarter I
November 18	½ day Students /Staff PD
November 23-25	Thanksgiving Break – School Closed
November 28	Return to School
December 7	Parent/Teacher Conference 4:30p - 7:00p
December 16	½ day Students / Staff PD
December 19	Winter Break Begins – School Closed
January 3, 2023	Return to School
January 16	Dr. MLK Observances – School Closed
January 25	½ day for Students/Staff PD
January 27	End of Quarter II
February 15	½ day for Students/Staff PD
February 20-24	Mid-Winter Break – School Closed
February 27	Return to School
March 8	Parent/Teacher Conference 4:30p - 7:00p
March 22	½ day for Students/Staff PD
March 31	End of Quarter III
April 7	Good Friday – School Closed
April 10-14	Spring Break – School Closed
April 17	Return to School
May 29-30	Memorial Weekend – School Closed
May 31	Return to School
June 7	½ day Students / Staff PD/HS Graduation
June 16	Last Day of School for students
June 20	Last Day of School for staff

#### Half Day Dismissal Times

11:30 am

Calendar is subject to additional changes

7/28/2022

S	M	T	W	Th	F	S
	1	2	3	4	5	6
7	8	9	10	11	12	13
14	15	16	17	18	19	20
21	22	23	24	25	26	27
28	29	30	31			

S	M	T	W	Th	F	S
			1	2	3	4
5	6	7	8	9	10	11
12	13	14	15	16	17	18
19	20	21	22	23	24	25
26	27	28				

S	M	T	W	Th	F	S
				1	2	3
4	5	6	7	8	9	10
11	12	13	14	15	16	17
18	19	20	21	22	23	24
25	26	27	28	29	30	

S	M	T	W	Th	F	S
			1	2	3	4
5	6	7	8	9	10	11
12	13	14	15	16	17	18
19	20	21	22	23	24	25
26	27	28	29	30	31	

S	M	T	W	Th	F	S
						1
2	3	4	5	6	7	8
9	10	11	12	13	14	15
16	17	18	19	20	21	22
23	24	25	26	27	28	29
30	31					

S	M	T	W	Th	F	S
						1
2	3	4	5	6	7	8
9	10	11	12	13	14	15
16	17	18	19	20	21	22
23	24	25	26	27	28	29
30						

S	M	T	W	Th	F	S
		1	2	3	4	5
6	7	8	9	10	11	12
13	14	15	16	17	18	19
20	21	22	23	24	25	26
27	28	29	30			

S	M	T	W	Th	F	S
		1	2	3	4	5
6	7	8	9	10	11	12
13	14	15	16	17	18	19
20	21	22	23	24	25	26
27	28	29	30	31		

S	M	T	W	Th	F	S
				1	2	3
4	5	6	7	8	9	10
11	12	13	14	15	16	17
18	19	20	21	22	23	24
25	26	27	28	29	30	31

S	M	T	W	Th	F	S
				1	2	3
4	5	6	7	8	9	10
11	12	13	14	15	16	17
18	19	20	21	22	23	24
25	26	27	28	29	30	

S	M	T	W	Th	F	S
	1	2	3	4	5	6
7	8	9	10	11	12	13
14	15	16	17	18	19	20
21	22	23	24	25	26	27
28	29	30	31			

S	M	T	W	Th	F	S
						1
2	3	4	5	6	7	8
9	10	11	12	13	14	15
16	17	18	19	20	21	22
23	24	25	26	27	28	29
30	31					