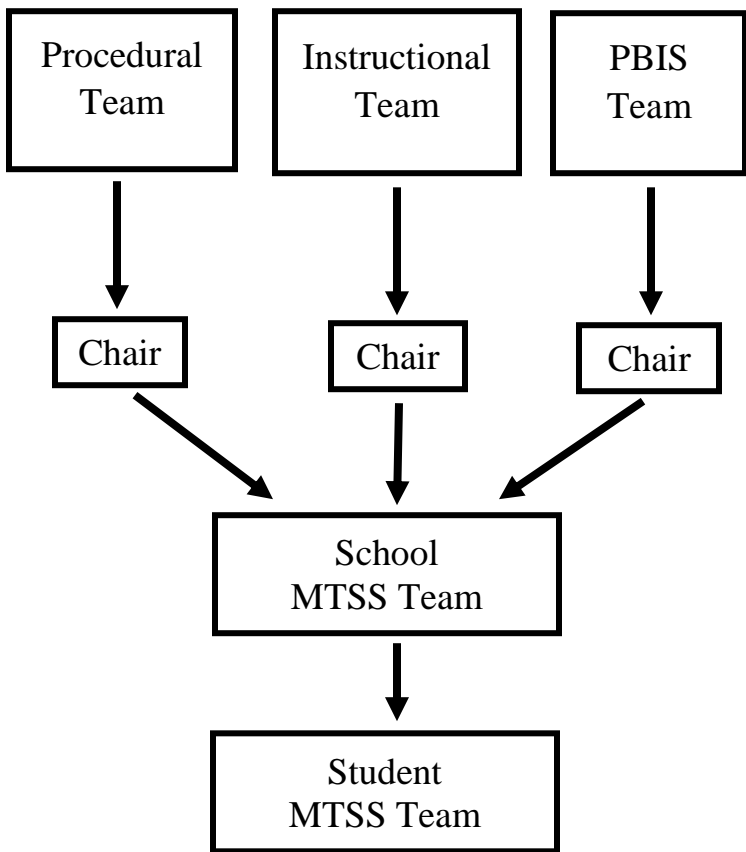


MTSS Flow Chart

Building Level



Meets
Once a
Month

This is How We Solve Issues
Place for Concerns and Decision-Making
Look @ Data Every Chance They Get

Reports Minutes
One Time a
Month

Done at Faculty Meeting
This way everyone hears what every committee is
working on.

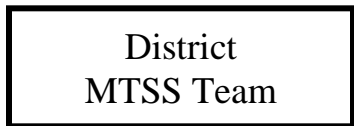
Meets
Once a
Month

School-wide Data Trends (Academic/Behavior)
Discussion of Methods and Resources

Meets One
Time Every
6-9 Weeks

Making Adjustments to Interventions
Student Level Data; Specific
With Teachers and PLC's

District Level



Meets
Once a
Month

District-wide Data at Every Meeting

	Tier 1 Strategies	Tier 2 Research Based Interventions	Tier 3 Research Based Interventions
Reading			
Writing			
Math			
Behavior (social, emotional, behavior)			

	Universal Screener	Progress Monitoring Tools
Reading		
Writing		
Math		
Behavior (social, emotional, behavior)		

- All Students are Tested/Screened
- Students Have Access to All Tiers
- Interventions are Targeted, Timely, Approved, and Reviewed Often
- Predictable = Avoidable
- Tiers 2 and 3 Weekly Assessments

Multiple tiers of instruction, intervention, and support. Includes learning standards and behavioral expectations. ...

- Problem-solving process
- Data evaluation
- **Communication** and collaboration
- Capacity building infrastructure
- **Leadership**