



# One Size Does Not Fit All: Your Child's Personalized Academic Pathway



**HHS PTA Meeting  
January 18, 2023**



# Today's Discussion

- **Our Foundation & Philosophy:** Who are we, and why?
- **MYP & DP Overviews**
- **Personalized Academic Pathways:** Course Selection Process
- **Preparing for your child's course selection meeting**



# The Benefits of an IB School

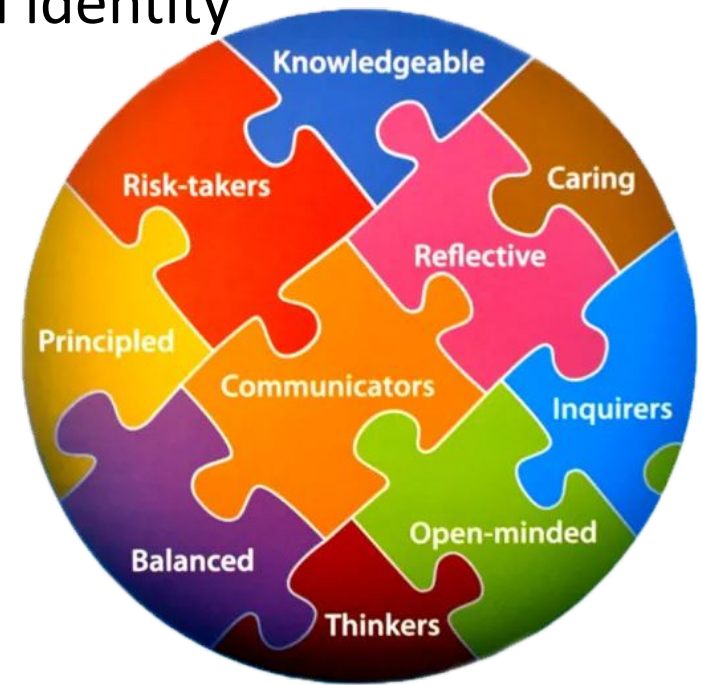


## Academic

- Rigorous, externally validated curriculum
- Builds critical thinking/inquiry skills
- Develops communication skills
- Promotes interdisciplinary learning
- Develops global awareness

## Social Emotional

- Promotes ethical awareness through action and service
- Builds student efficacy and identity





# Middle Years Program

The Middle Years Programme (MYP) begins in 6th grade and culminates in 10th grade. MYP helps students develop both subject-specific and interdisciplinary understanding. The MYP curriculum framework includes:

- **Approaches to learning (ATL)**, helping students learn how to learn by developing skills for research, critical and creative thinking, communication, collaboration, and self-management
- **Key and related concepts**, helping students explore big ideas that matter
- **Global contexts**, helping students understand the relevance and importance of their study for understanding their common humanity and shared guardianship of the planet.

The MYP culminates in an independent learning project called the “Personal Project”.



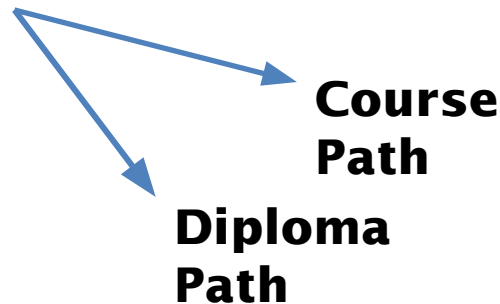
# IB Program Overview

Collection of Jr & Sr year courses that have a common goal - strengthen student academic skills and personal traits – the *Learner Profile*

You will choose how you want to navigate through the program based upon your academic interests and future goals



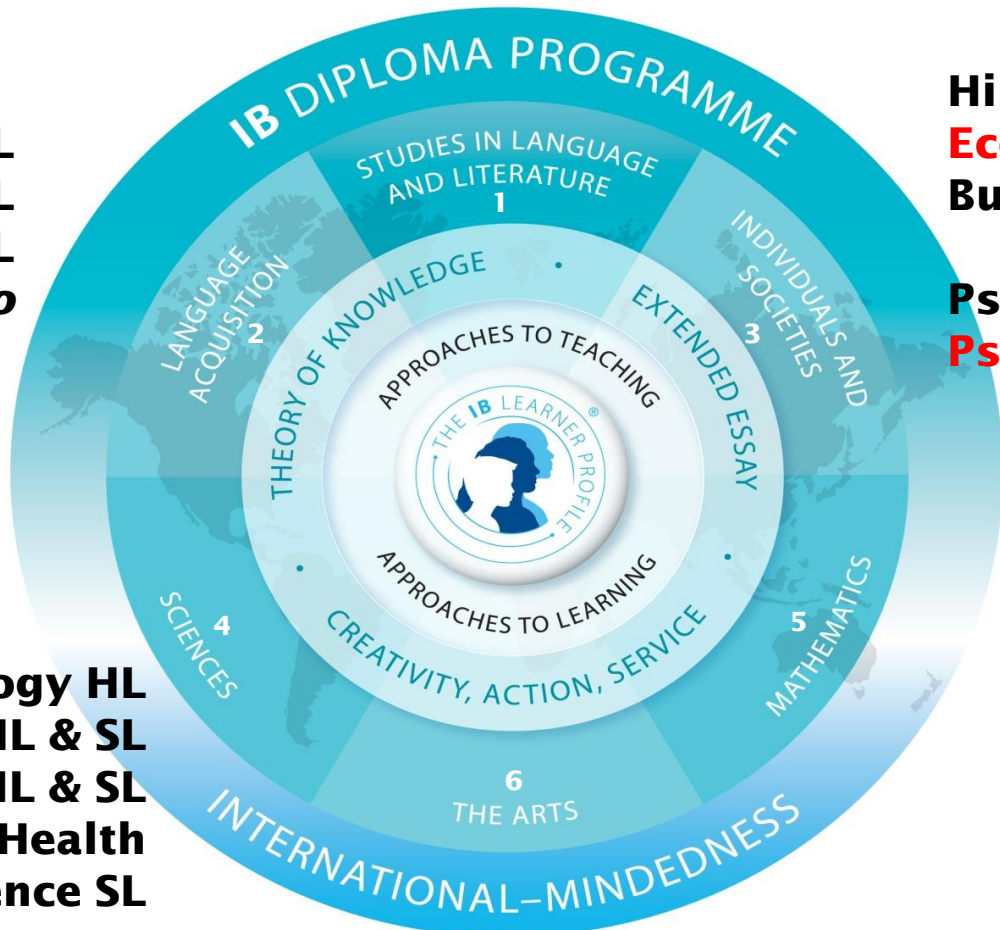
There are 2 pathways you may take through the program





# IB Courses @ HHS

## English Literature HL English Language and Literature



**French HL & SL**  
**Italian HL & SL**  
**Spanish HL & SL**  
**Spanish *Ab Initio***

**History HL & SL**  
**Economics SL**  
**Business & Management HL & SL**  
**Psychology HL**  
**Psychology SL**

**Biology HL**  
**Physics HL & SL**  
**Design Tech HL & SL**  
**Sports, Exercise & Health**  
**Science SL**

**Math Applications SL**  
 — **AP Calc BC**  
 — **Multivariable Calculus/SUPA**  
**Math Analysis SL**

**Visual Arts HL/SL**  
**Music HL/SL**  
**Dance HL/SL**  
**Theatre HL/SL**

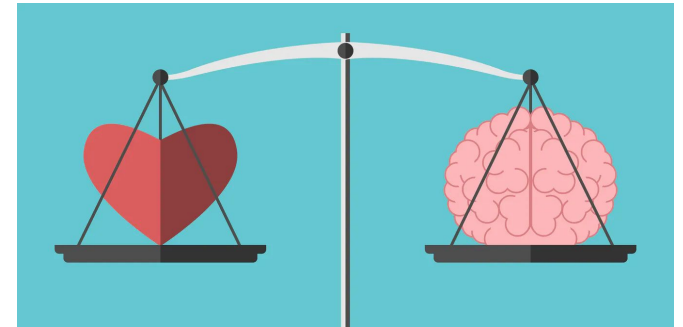
**All 2 year courses except those in red**



# Course Selection

*Personalized Rigorous Academic Experiences*

**“Most Rigorous,  
Best-Fit Pathway”**



We want to build a 4-year plan that includes rigor and that allows for academic success in your courses. We help you create a personalized pathway to learning that aligns course selection to personal and academic goals for high school and college.

# Personalized Rigorous Academic Experiences

- Individual Academic Advisement Meeting with Students and Families
- Whole Group Curriculum Meeting with all 10th graders
- Students and teachers- “Course Marketing”
- HHS Counselors Meet with Academic Directors and IB Coordinator







# HHS Course Selection/Academic Advisement Meeting

## Grade 9

### February/March

- Revisit 4 year plan
- Review transition to high school
- Select courses for 10th grade considering electives (1.5 credits) and AP World History

## Grade 10\*

### February

- Revisit 4 year plan
- Review successes and challenges
- Select courses for 11th grade
- Course selection involves more choice\*, i.e. IB Diploma Program and IB Courses

## Grade 11

### January

- Finalize 4 year plan
- Review successes and challenges
- Select courses for 12th grade
- Post Secondary planning
- Standardized testing plan



# How to best prepare for course selection meetings with your child's school counselor

1. Be prepared to share novel information about your child.
2. Have a conversation with your child...
  - a. Happiness/Wellness, Interests, Strengths, Challenges, Post-Secondary Goals, etc.
3. Use classroom teachers as a resource
  - a. Classroom discussions/presentations regarding next steps
4. Review [Course Selection Planning](#) on the Guidance webpage.



# One Size Does Not Fit All: Your Child's Personalized Academic Pathway

*Most Rigorous,  
Best-Fit Pathway*





# What does an IB DP student look like?

Student 1	Student 2	Student 3
<ul style="list-style-type: none"><li>● IB Physics HL</li><li>● IB Spanish SL</li><li>● IB English HL</li><li>● Multivariable Calculus/Math Applications SL</li><li>● IB English HL</li><li>● IB Psychology HL</li><li>● Science Research</li><li>● IB History of the Americas HL</li><li>● TOK</li><li>● EE, CAS</li><li>● PE</li></ul>	<ul style="list-style-type: none"><li>● IB History of the Americas SL</li><li>● IB Biology HL</li><li>● IB Italian SL</li><li>● IB Psychology HL</li><li>● IB Math Analysis SL</li><li>● IB Lang &amp; Lit SL</li><li>● Chorus</li><li>● PE</li></ul>	<ul style="list-style-type: none"><li>● IB Lang &amp; Lit SL</li><li>● IB Math Applications SL</li><li>● IB Spanish SL</li><li>● US History</li><li>● IB Business SL</li><li>● String Orchestra</li><li>● Chemistry</li><li>● PE</li></ul>