

Lenovo 500e Chromebook

2ND GEN

The Lenovo 500e Chromebook 2nd Gen is an educational powerhouse that brings smarter technology to the most advanced learning environments. It's designed with a 360-degree hinge for multi-mode use and a multi-touch screen with a garaged EMR stylus for a superior interactive experience.

In addition to enhanced durability features, like a Gorilla® Glass display, the Lenovo 500e Chromebook 2nd Gen also makes it easy to ensure the security of your devices and your data using Chrome management software that school administrators already know and trust.



Lenovo 500e Chromebook 2nd Gen



A MIGHTIER PEN

When you need more precision than a fingertip can offer, there's a pressure-sensitive EMR stylus with garage built right into the Lenovo 500e Chromebook 2nd Gen. With a shape and size that feel more like a real pen, the easy-to-use and highly accurate EMR stylus is perfect for notetaking, sketching, and working out complex math problems by hand.



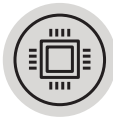
HANDS-ON LEARNING

The Lenovo 500e Chromebook 2nd Gen encourages natural interaction with course materials through an 11.6-inch, 10-point multi-touch HD display. Pair that with a 360-degree hinge that enables users to move between tablet, laptop, tent, and stand mode, and you have a versatile, tactile personal learning machine.



DURABLE AND ENDURING

The Lenovo 500e Chromebook 2nd Gen keeps up with today's fast-paced educational environments thanks to a battery that lasts up to 10 hours* on one charge and a non-slip, drop-resistant, water-resistant (up to 330 ml) design.



PORTABLE POWERHOUSE

Though it weighs less than three pounds, the Lenovo 500e Chromebook 2nd Gen boasts the latest Intel® Celeron® processor and easy-to-use Chrome OS™ that gives teachers and students fast access to lessons plans, assignments, learning apps, and more.



adaptability

The Lenovo 500e Chromebook 2nd Gen flexes to fit every style of teaching or learning by moving seamlessly between four different modes.

precision

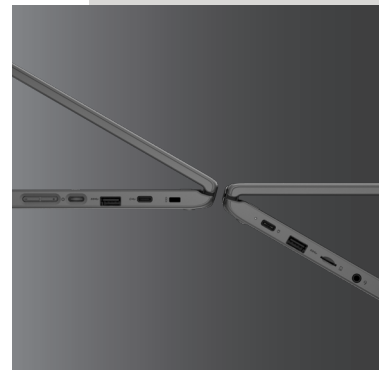
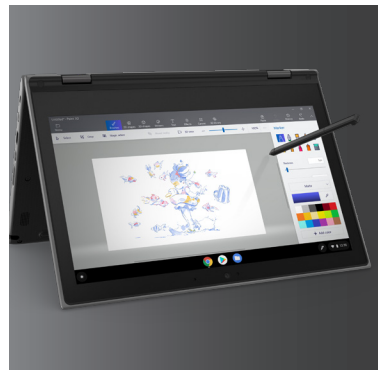
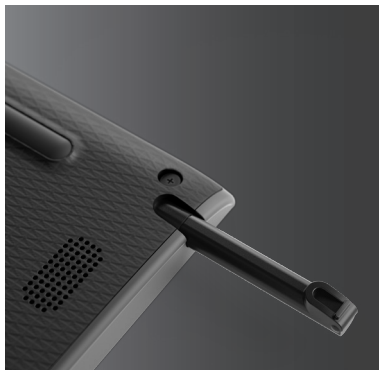
A pressure-sensitive EMR stylus is included with every Lenovo 500e Chromebook 2nd Gen for precise interactivity that never requires a charge.

durability

Designed to meet MIL-STD-810G and Lenovo EDU Spec standards, the Lenovo 500e Chromebook 2nd Gen features a water-resistant (up to 330 ml) keyboard, reinforced ports, and mechanically-anchored keys.

*Based on Google Chrome Power_LoadTest, a battery run down test. For more information about Google Chrome Power_LoadTest, visit www.chromium.org. Test results should be used only to compare one product with another and are not a guarantee you will experience the same battery life. Battery life may be significantly less than the test results and varies depending on your product's configuration, software, usage, operating conditions, power management settings and other factors. Maximum battery life will decrease with time and use.

Lenovo



Lenovo 500e Chromebook 2nd Gen

performance

PROCESSOR

Intel® Celeron® N4120 processor

OPERATING SYSTEM

Chrome OS™

GRAPHICS

Intel® UHD Graphics 600

CAMERA

720p front-facing, 5MP world-facing camera

MEMORY

Up to 8GB

STORAGE

Up to 64GB eMMC

BATTERY

Up to 10 hrs,* 42 WHr battery

AUDIO

Stereo

security

Kensington® lock slot

connectivity

INPUT/OUTPUT PORTS

2x USB Type C

2 x USB 3.0

1x MicroSD card reader

1x 3.5 mm audio and microphone combo jack

WIFI

WLAN 802.11 AC (2 x 2)

Bluetooth® 4.2

design

DISPLAY

11.6" HD (1366 x 768) 10-point multi-touch display IPS 250

DIMENSIONS (W X D X H)

290 x 204 x 20.35 mm

11.41 x 8.03 x 0.8 in

WEIGHT

1.3 kg/2.9 lbs.

MIL-STD-810G

Yes

KEYBOARD

Water-resistant (up to 330 ml) keyboard with touchpad and mechanically-anchored keys

optional offerings and services

Lenovo offers a comprehensive portfolio of services to support and protect your investment—so you can focus on education, not IT.

CHROME EDUCATION LICENSE

Enables IT administrators to manage multiple Chrome devices within a centralized, easy, and intuitive software interface. Lenovo is an authorized reseller of Chrome Education license.

G SUITE FOR EDUCATION

Save on software licensing fees with easy access to Google's G Suite family of apps. Cloud management and 24/7 support make Chromebooks easily scalable to any size classroom.

ACCIDENTAL DAMAGE PROTECTION (ADP)

Prevents the hassles of unexpected repair costs. Provides coverage for non-warranted damage incurred under normal operating conditions, such as minor spills, drops, or damage to the integrated screen.

WARRANTY EXTENSION (1-YEAR BASE, UP TO 3 YEARS TOTAL)

Helps you accurately budget for PC expenses with a fixed-term, fixed-cost service that protects your valuable investment and lowers the cost of ownership over time.

ONSITE WARRANTY

Ensures covered upgrades will be addressed by the next business day. This convenient service keeps your machines and data on school grounds throughout the repair.

*Based on Google Chrome Power_LoadTest, a battery run down test. For more information about Google Chrome Power_LoadTest, visit www.chromium.org. Test results should be used only to compare one product with another and are not a guarantee you will experience the same battery life. Battery life may be significantly less than the test results and varies depending on your product's configuration, software, usage, operating conditions, power management settings and other factors. Maximum battery life will decrease with time and use.

accessories



LENOVO PROTECTIVE CASE

This custom-molded protective case fits your Chromebook perfectly while providing full functionality and access to all ports. Its durability, cleanable exterior, as well as reinforced edge and corner protection make it ideal for classrooms, field trips, or anywhere accidental bumps and drops are prone. It also features a translucent backside and clear window for asset tagging.



LENOVO USB-C 7-IN-1 HUB

Sleek and compact, this USB-C hub offers one-stop docking with up to seven options. Easily connect to an external 4K display with HDMI and up to three USB-A devices. There are also two SD/TF card readers and USB-C power pass-through.



LENOVO PRO WIRED STEREO VOIP HEADSET

This headset offers the versatility of using the USB or 3.5mm connection, allowing users to stay connected with their PC or personal device. It also features a noise-cancelling microphone that eliminates background noise for better conversation. Set up is easy—simply plug in and go.



LENOVO 500E CHROME PEN

Designed specifically for the Lenovo 500e Chromebook, this pen relies on machine intelligence from Chrome OS™ to predict where the writing will go, providing a smoother “real pen” experience for easier notetaking and writing, fine art, or graphic design. No charging or pairing is required, so the pen can be shared between users and across Lenovo 500e Chromebook devices.