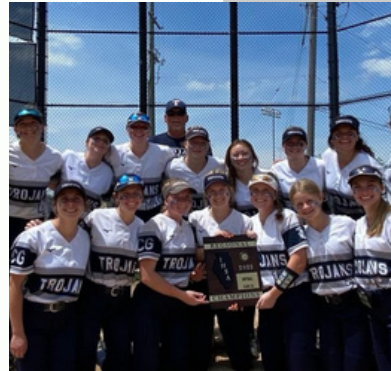


CARY-GROVE HIGH SCHOOL



TRANSFER STUDENT GUIDE



TABLE OF CONTENTS

Welcome..... 1

School Enrollment..... 2

School Registration..... 3

Student Health Information..... 3

Placement into Core Courses..... 4

Choosing Elective Courses..... 4

Promoting Student Success..... 5

In-School Supports for Students..... 6

Graduation Requirements..... 6

One-to-One Technology Program..... 7

Software Systems & User Accounts..... 7

Activities..... 8

Athletics..... 9

Frequently Asked Questions..... 10

School Administration.... 11



PRINCIPAL'S WELCOME

Welcome Trojans! We are excited to welcome you into our Cary-Grove family and introduce you to the traditions that Cary-Grove High School has to offer including Friday Night Lights, school dances, art shows, athletics, plays and musicals, and much more!



One of our pillars at Cary-Grove is engagement, and we believe our students have more success and feel more connected when they get involved in athletics and extracurricular activities. We encourage you to try these new activities and meet new people.

We look forward to meeting you soon!

Dr. Neil Lesinski
Principal

SCHOOL ENROLLMENT

A required one-time process for students new to District 155.

District 155 has established a secure online portal to support school enrollment. Parents may access the online portal [HERE](#) and must complete the process affirming their intent to send their child to a District 155 school in the current school year.

Required Enrollment Documents

1 PROOF OF RESIDENCY: Proof of residency can be satisfied by uploading the following:

One of these documents:

- Valid rental contract
- Closing statement
- Current real estate tax bill

And

Two of these documents:

- Valid driver's license
 - Current utility bill - ComEd, NICOR (within three months)
- OR
- If there are special circumstances regarding your residency, please contact the District Registrar Enrollment Office.

2 BIRTH CERTIFICATE: All students must upload a birth certificate.



Limited access to online services?

Enrollment documents can be dropped off at the District 155 office on school days between 8:00 a.m. – 2:00 p.m.



1 S. Virginia Road, Crystal Lake, IL 60014



Questions about high school enrollment?

Call the District 155 registrar's office at 815-455-8510 for assistance
OR

Email: enrollment@d155.org

SCHOOL REGISTRATION

School registration is different from school enrollment. School registration happens each year, whereas school enrollment only happens when a student moves into the district. Registration information will be sent to you in May. To help you prepare for registration, you may want to schedule a school physical now as it is part of the registration process. See below for more information.

⊕ STUDENT HEALTH INFORMATION

NEW STUDENT REQUIREMENTS

PHYSICALS

Per Illinois Department of Public Health regulations, all new students must provide evidence of a current physical exam and up-to-date immunizations. To meet this requirement, the exam must be completed between August 15, 2022 – August 16, 2023.

The physical exam must be performed by a physician and be documented using the approved form available [here](#). *The State of Illinois Certificate of Child Health Examination form includes a section on side 2 which must be completed by the parent.*

Students will not be cleared to attend classes until this requirement is satisfied.

Athletic physicals DO NOT meet the requirements for general school enrollment

DENTAL EXAMS

All students new to D155 are required to receive a dental exam from a dentist between November 15, 2022 - May 15, 2024. The dental exam form is available [here](#).

Parents can provide the completed physical exam form by:

- Email a scan/photo of the form to cgnurse@d155.org

PLACEMENT INTO CORE COURSES

All 9th grade students at Cary-Grove High School are assigned to specific courses in English, math, and science. Courses in these core subject areas are leveled to best serve individual students by aligning to the student's subject aptitude, previous coursework experiences, and readiness for learning. Although some courses are not offered at every level, a general description of the levels is provided:

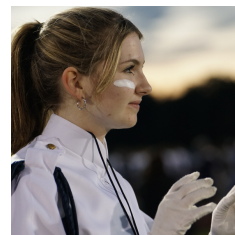
1. **General** - courses that build upon previously attained fundamental skills while preparing students for higher levels of rigor
2. **Honors** - courses that challenge students who have demonstrated a capacity to learn at an accelerated pace



Course placement is determined through a review of current academic achievement scores, transcripts, and recommendations captured during the counselor enrollment appointment.

CHOOSING ELECTIVE COURSES

Cary-Grove encourages students to participate in elective coursework that supports students' individual post-secondary goals. Our elective offerings are designed to align with career pathways, foster student talents, and encourage exploration of interests.



[Click here](#) to view full District 155 Curriculum Guide.

PROMOTING STUDENT SUCCESS

Each student at Cary-Grove High School is assigned a school counselor to assist with academic planning, social-emotional needs, and post-high school goals.

Students needing assistance balancing their academic workload, extracurricular involvement, community involvement, and other obligations are encouraged to contact their school counselor to explore solutions.

BALANCE

Each day students must balance a variety of school-related activities and personal obligations.

Students should consider these four factors as they choose elective courses and seek to manage their time and energy.

ACADEMIC WORKLOAD

- Students are encouraged to participate in rigorous coursework aligned with their individual post-high school goals.
- Achieving a 2.75 or higher grade point average is a strong indicator of academic success.

COMMUNITY INVOLVEMENT

- Student volunteerism is valued as a learning opportunity and as a service to others.
- Every student is encouraged to participate in community service during their 4-year high school experience.

EXTRACURRICULAR INVOLVEMENT

- Club and team memberships provide opportunities to make meaningful social connections and develop interpersonal & intrapersonal skills.
- Each student is encouraged to join at least one school activity or school athletic team during each year of high school.

LIFE BALANCE

- The combined impact of academic coursework, extracurricular involvement, community employment, community service, and other obligations can create unhealthy stressors for some students.
- All students are encouraged to consider the collective workload associated with their day-to-day routines as they balance their unique obligations.

IN-SCHOOL SUPPORTS FOR STUDENTS

Direct support for academic needs and social-emotional challenges is available to all students.

ACADEMIC SUPPORTS

An array of academic supports are available at Cary-Grove High School. These supports are available before school, during school, and after school to meet students' individual needs. Examples of our school's support include:

- Math/Lit Center
- Guided Study Hall

SOCIAL-EMOTIONAL SUPPORTS

A full team of school social workers and school psychologists is available to help students develop coping strategies and to connect them with outside-of-school resources that may be valuable in forming long-term solutions to present-day difficulties. More information about social-emotional support at Cary-Grove High School can be found [here](#).

GRADUATION REQUIREMENTS

Students must earn 20.25 credits to graduate. Specific course requirements are listed.



[Click here to learn about our Cum Laude Graduate criteria.](#)

*The Career Experiences Program (CEP) requirement will be met by successful completion of all tasks assigned in SchoolLinks during the required seminar/advisory period each year. This graduation requirement begins with the class of 2025. State law requires all seniors to complete the FAFSA by graduation.

Classroom Driver Education	0.25 credit
Computer Education	0.5 credit
Consumer Education	0.25 credit
Electives	6.0 credits
English	4.0 credits
Health Education	0.50 credit
Mathematics	3.0 credits
Physical Education	1.75 credits
Science	2.0 credits
Social Studies	2.0 credits
*Career Experience Program	0 credits
TOTAL	20.25 UNITS



ONE-TO-ONE TECHNOLOGY PROGRAM

All students at Cary-Grove High School are assigned a Google Chromebook as part of District 155's one-to-one technology program. Chromebooks are an integral part of our approach to teaching and learning, and students are expected to have their fully charged Chromebook in school each day. Student Chromebooks are optimized for learning. Access to selected device settings is controlled by school personnel in order to minimize distractions. More information about school-assigned Chromebooks, including details about technical support, is available [here](#).



SOFTWARE SYSTEMS & USER ACCOUNTS

01

Skyward

Skyward enables parents to view real-time data about their child's educational experience including demographic information, grades, attendance, class schedule, and health information. Access is secured by a unique username and password. Details about account creation will be sent to parents once registrars approve applications during the New Student Online Enrollment (NSOE) process.

02

Canvas

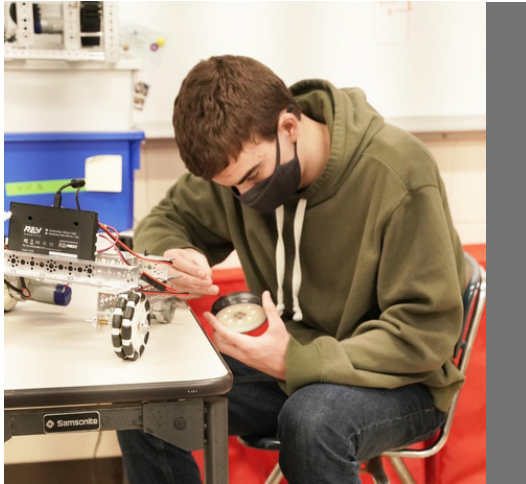
Our school uses Canvas to manage and support students' learning experiences. The online platform provides students access to classroom activities, teacher resources, and collaborative tools that help students engage in their coursework.

03

SchoolLinks

Post-high school planning is a critical component of our school's approach to student success. SchoolLinks, an online tool, provides students access to many tools that aid college, career, and life readiness preparation so that students have a smooth transition after graduation. Parents will have access their child's profile so they can actively engage in the planning process with their child.

ACTIVITIES



[Click here](#) for more information about activities and clubs, or contact our Activity Director, David Cook, dcook@d155.org.

Students who participate in extracurricular activities and clubs develop life skills, create strong peer-to-peer relationships, feel more connected to their school, and are more likely to experience academic success. We encourage all students at Cary-Grove High School to join at least one extracurricular activity or club each year.

Black Student Union
CG Buddies
Chess Team
Color Guard
Comedy Club
Connect Crew
Comics & Video Game Club
Debate Club
Fall Play
Fellowship of Christian Athletes
French Club
Freshman Class
German Club
Gay Straight Alliance
Interact
Jazz Band
Jazz Combo
Junior Class
Latino Leadership Club
Math Team
Musical
National Honor Society
Robotics
Scholastic Bowl
Science Olympiad
Senior Class
Sophomore Class
Spanish Club
Speech Team
Spring Play
Swing Choir
Trojan Times Newspaper
Trojan Voices
Writing Club
Yearbook

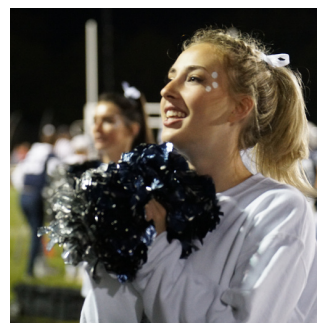
ATHLETICS

Students at Cary-Grove High School may take part in a variety of competitive sports teams.

[Click here](#) for more information about registration and fees associated with participation in athletics. You may contact Athletic Director, Ryan Ludwig at rludwig@d155.org with questions about eligibility requirements.

FALL	WINTER	SPRING
Cheerleading	Boys & Girls Basketball	Baseball
Boys & Girls Cross Country	Cheerleading	Boys & Girls Lacrosse
Football	Dance	Girls Soccer
Boys & Girls Golf	Girls Gymnastics Co-Op	Softball
Poms	Boys Swimming Co-Op	Boys Tennis
Boys Soccer	Wrestling	Boys & Girls Track & Field
Swimming Girls		
Girls Tennis		
Volleyball		

Cary-Grove High School offers many summer sports camps designed to enhance athletes' readiness to participate. Watch on our website for a notice about summer camps in the spring.



FREQUENTLY ASKED QUESTIONS

Q

Why do I need to provide proof of residency?

A

District 155 requires all new students to demonstrate they reside within the district boundaries.

Q

What if my student wants to participate in athletics?

A

The principal's concurrence form is to be completed at the time of enrollment and then connect the student w/ building athletic sec.

Q

When will my child receive a class schedule?

A

Students receive their class schedules following the completion of enrollment and after meeting with their assigned school counselor.

Q

My child wants to participate on an athletic team. Is there a fee to take part in athletics?

A

Yes. All student athletes are required to pay a \$100 participation fee per sport (\$200 maximum per student; \$400 maximum per household). See our school's Athletics webpage for more detail.

Q

My child is a student athlete. Will an athletic physical meet the requirements for a school physical exam?

A

Athletic physicals do not satisfy the requirement for a physical exam prior to the start of school. See page 3 for more details about health requirements or contact our school nurse, Sarah Folkening, at sfolkening@d155.org, for more information.

SCHOOL ADMINISTRATION



DR. NEIL LESINSKI
PRINCIPAL
nlesinski@d155.org



REBECCA SAFFERT
VICE PRINCIPAL
rebsaffert@d155.org



DR. HANK HARVEY
STUDENT SERVICES
COORDINATOR
hharvey@d155.org



RYAN LUDWIG
ATHLETIC DIRECTOR
rludwig@d155.org



JIM KELLY
DEAN
jkelly@d155.org



RYAN SLATTERY
DEAN
rslattery@d155.org

DIVISION LEADERS



TROY BRULEY
STEM
tbruley@d155.org



MIKE MANNING
INDUSTRY & CAREERS
& WELLNESS
mmanning@d155.org



SHARLENE MONTGOMERY
HUMANITIES
smontgomery@d155.org



CORI SCHWARZROCK
INTERNATIONAL STUDIES
cschwarzrock@d155.org



DONA TAYLOR
SPECIAL EDUCATION
dtaylor@d155.org