

# Class of 2027 Freshman Enrollment



Park Hill High School

# Counselors

---

Ms. Lucas (A – Ce)



Mr. Mesh (L – O)



Ms. Lisi (Ch-Gi)



Ms. Smith (P – Sn)



Ms. Morais (Gj – K)



Ms. Cash (So – Z)



# Topics of Discussion

The High School Schedule

Graduation Requirements

Special Programs

Course Offerings

Future Opportunities

Questions

# Parallel Schedule

## FIRST TERM

## SECOND TERM

1<sup>st</sup>

Geometry

Drama

2<sup>nd</sup>

Red Days – ELA 1

White Days – Biology

Red Days – ELA 1

White Days – Biology

3<sup>rd</sup>

World History

Algebra IB

4<sup>th</sup>

Spanish I

Foundations of Fitness

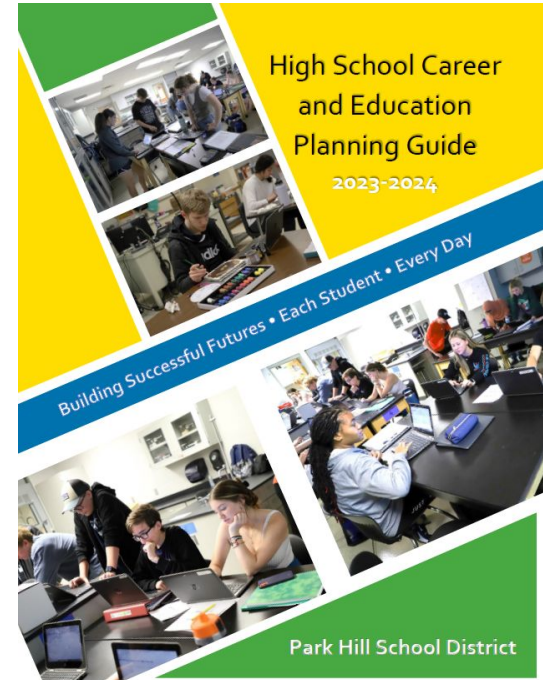
# High School Schedule

- Daily Schedule
  - 1st block 7:50–9:19
  - 2nd block 9:23–10:43
    - Announcements 10:43–10:46
  - Homeroom 10:46–11:26
  - 3rd block 11:31–1:23
  - 4th block 1:28–2:58

# Career and Educational Planning Guide (CEPG)

Access the planning guide through the Park Hill High School website or use this link:

## High School Career and Education Planning Guide



# AVID—

p.9 in CEPG

- ▶ **Advancement Via Individual Determination**
- ▶ Counts as an elective course worth 1.0 credit.
- ▶ Prepares students for college readiness and success.
- ▶ More information will be coming soon about the application/selection process.

# A+ Scholarship Program

(pg. 10 in CEPG)

- Signed A+ Letter of Intent
- Grade Point Average – 2.5 over 4 years
- 95% attendance average over 4 years
- 50 hours tutoring/mentoring over 4 years
- Score Proficient or Advanced on the Algebra I EOC exam
- Good Citizenship outlined in the Park Hill School District Policy JG in Student/Parent handbook
- Two Years of Consecutive Attendance at a Missouri A+ High School ending with graduation
- Some 4-year colleges and universities offer scholarships for A+ completion
- **Examples:**
  - Park University - \$3,000/year
  - Truman State - \$500/year
  - Northwest Missouri State - \$1,500/year
  - Missouri Western - \$500/year

## Questions???

**Mrs. Reys – A+ Coordinator**

A+ office outside upper gym

816-359-6734

[reyse@parkhill.k12.mo.us](mailto:reyse@parkhill.k12.mo.us)



# Schedule Changes –

p. 16 in CEPG

- ▶ A student's schedule will be changed for the following reasons:
  1. Computer Error
  2. Prerequisite not met
  3. Duplicate Credit
  4. To increase the level of rigor

## IMPORTANT –

**Be sure the classes you choose are truly the classes you want to take.**

# Graduation Requirements – p. 15 in CEPG

	Credits Required
Language Arts	4
Social Studies	3
Science	3 (Bio and Chemistry required)
Math	3 (Algebra II required)
PE	1
Fine Arts	1
Practical Arts	1
Health	.5
Personal Finance	.5
Electives	11
<b>TOTAL</b>	<b>28</b>

# English Language Arts – p. 21 in CEPG

- ▶ All 9<sup>th</sup> grade students enroll in English Language Arts 1 (ELA 1)
- ▶ Some students may also be required to take **English Language Arts Essentials**. Please check your recommendation sheet to see if you qualify to take this course in addition to ELA1.

1. **ENGLISH LANGUAGE ARTS (ELA) (p. 21)**

*All freshmen take ELA 1. Some freshmen also take ELA Essentials. Please see your counselor if you have questions.*

- ☐ English Language Arts 1
- ☐ English Language Arts Essentials

# Math – p. 32 in CEPG

- **All 9<sup>th</sup> grade students are required to take 2 math classes** (one each semester).
- Minimum requirements = all students must take through Algebra II or Algebra IIA/IIB to meet the minimum graduation requirement
- Your counselor has indicated which classes you should sign up for on your Freshman Course Recommendation Form.

## Regular Math Sequence

- ▶ Pre-Algebra and Algebra IA
- ▶ Algebra IA and Geometry
- ▶ Geometry and Algebra IB

## Accelerated Math Sequence

- ▶ Accelerated Geometry and Accelerated Algebra II

# Math continued

## 2. **MATHEMATICS** (p. 33)

*All freshmen take two math courses. Please choose your first term math course below:*

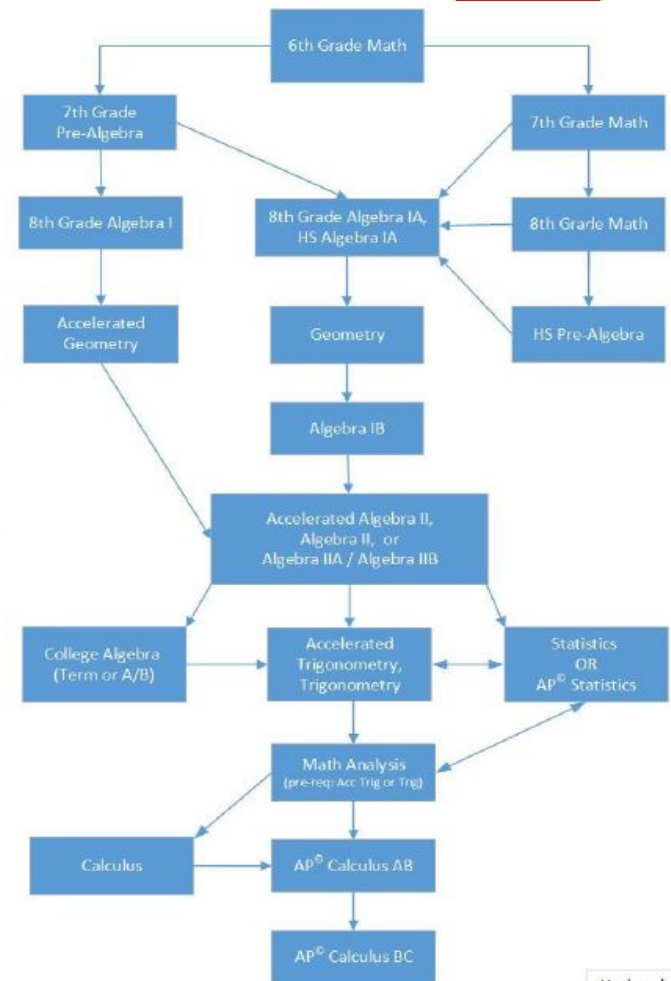
- ☐ Pre-Algebra
- ☐ Algebra IA
- ☐ Geometry
- ☐ Accelerated Geometry

*Please choose your second term math course below:*

- ☐ Algebra IA
- ☐ Geometry
- ☐ Algebra IB
- ☐ Accelerated Algebra II

# Math Flow Chart

Mathematics  
Course  
Sequence  
Flow Chart  
Grades 6-12



# Science– p. 47 in CEPG

- ▶ All 9<sup>th</sup> grade students enroll in Biology
- ▶ Some students may also enroll in Accelerated Chemistry – please check the recommendation sheet.

3. **SCIENCE** (p. 47)

*All freshmen take Biology. Check with your counselor if you also choose to take Accelerated Chemistry.*

☐

Biology

☐

Accelerated Chemistry

# Social Studies– p. 49 in CEPG

- ▶ All 9<sup>th</sup> grade students enroll in World History
- ▶ SOME students will also enroll in:
  - Advanced Placement (AP) Human Geography
    - Offered 2<sup>nd</sup> term for Freshmen who have this checked on the recommendation form after successfully completing World History

#### 4. **SOCIAL STUDIES** (p. 50)

*All freshmen take World History. Check with your counselor if you also choose to take AP Human Geography.*

- ☐ World History
- ☐ AP Human Geography



# Dual Credit - p. 6 in CEPG

---

- College credit through Metropolitan Community College
- Dual Credit Requirements:
  - Meet prerequisite for any course
  - Students in the 10<sup>th</sup> grade must have an overall minimum GPA of a 3.0 (unweighted).
  - Qualifying ACT or Accuplacer
- Students will receive dual credit information from the course teacher.

# Advanced Placement (AP)

- ▶ Rigorous college-level curriculum
- ▶ Widely accepted: Earn potential college credits or advanced placement depending on AP Exam Score
- ▶ Scores: 1-5 (need a 3 or higher)
- ▶ Earn distinction GPA

# Fine Arts- page 26

## ▶ **Art**

- Design and Drawing
  - Basic foundation in both design and realistic drawing.

## ▶ **Music**

- Music Appreciation
  - Non-performance class that explore a variety of music styles.
- Bass Clef or Treble Clef Choir
- Campus Band
- Concert Orchestra

## ▶ **Theatre**

- Drama
  - Introduction to the theater. Will become acquainted with the history of theater and various significant plays.
- Tournament Forensics
  - This is a competitive acting class.

# 1.0 credit of Fine Art is required for graduation

## 9. FINE ARTS (p. 26)

### ART COURSES

☐ Design and Draw

### MUSIC COURSES

☐ Music Appreciation

☐ Bass Clef Choir

☐ Treble Clef Choir

☐ Campus Orchestra

☐ Campus Band

### THEATRE COURSES

☐ Drama

☐ Tournament Forensics

# Physical Education- page 37

- ▶ Students must pass 1.0 credit of PE for graduation
- ▶ Must take Foundations of Fitness or Weight Training and Conditioning before any other PE course.
- ▶ Option of Summer School for Foundations of Fitness (in person or virtual)

## 13. PHYSICAL EDUCATION (p. 37)

- ☐ Foundations of Fitness
- ☐ Weight Training / Conditioning

# Summer School 2022

---

**Wanting to sign up for a summer school course? Click the link below to sign up.**

[https://docs.google.com/forms/d/e/1FAIpQLSfp-OcToJUDa5RsrdSj7fo58ubiFbwIplUp18vXpDtRy\\_JmoQ/viewform](https://docs.google.com/forms/d/e/1FAIpQLSfp-OcToJUDa5RsrdSj7fo58ubiFbwIplUp18vXpDtRy_JmoQ/viewform)

# Practical Arts

## ▶ **Business/Technology** (pg.18)

- ▶ Introduction to Business

## ▶ **English/Language Arts** (pg. 23)

- Broadcast Journalism
- Journalism/Mass Media
- Photojournalism
- Debate (not a practical art)

## ▶ **Engineering** (pg. 20)

- Introduction to Engineering Design (PLTW)
  - Use 3D modeling software and use a problem-solving model to improve existing products and invent new ones.

## ▶ **Math** (pg. 36)

- PLTW Computer Science Essentials
- PLTW/AP Computer Science Principles

# Practical Arts

▶ **Family & Consumer Science**  
(pg. 25)

- ▶ Fashion and Apparel I
- ▶ Housing and Interior Environment
- ▶ Nutrition and Foods

▶ **Industrial Technology** (pg. 32)

- Home Maintenance



# Practical Arts continued

## 5. **BUSINESS / TECHNOLOGY** (p. 18)

☐ Introduction to Business

## 6. **ENGINEERING** (p. 20)

☐ PLTW Intro to Engineering Design

## 7. **ENGLISH LANGUAGE ARTS** (p. 23)

☐ Broadcast Journalism

☐ Debate

☐ Journalism / Mass Media

☐ Photojournalism

## 8. **FAMILY AND CONSUMER SCIENCE** (p. 25)

☐ Fashion & Apparel I

☐ Housing & Interior Environment

☐ Nutrition & Foods

## 11. **INDUSTRIAL TECHNOLOGY** (p. 32)

☐ Home Maintenance

## 12. **MATHEMATICS** (p. 35)

☐ PLTW Computer Science Essentials

☐ PLTW/AP Computer Science Principles

# Foreign Language - page 29

- ▶ French I and French II
- ▶ German I and German II
- ▶ Spanish I and Spanish II

## 10. FOREIGN LANGUAGE (p. 29)

- ☐ French I
- ☐ French II
- ☐ German I
- ☐ German II
- ☐ Spanish I
- ☐ Spanish II

- ▶ Not required for graduation
- ▶ Minimum of two credits of the same language are required for many college admissions
- ▶ Dual Credit Opportunities for the 3<sup>rd</sup>, 4<sup>th</sup> and AP levels.



DUE DATE!!!!

- ▶ Completed Enrollment Sheets are due to Your Counseling office by February 10, 2023.

# Enrollment Night Information for Parents

- ▶ **Remind your parents/guardians...**
- ▶ Parent Enrollment Information Night
  - ▶ January 31, 2023
  - ▶ 6:30 pm in PHHS Auditorium

# Before you turn in your form, be sure to:

- ▶ **Circle 8 courses.**

**All students choose:**

English Language Arts 1

2 Math classes

Biology

World History

- ▶ Select an **alternate** course in the gray box
  - ▶ You may end up with this course.
  - ▶ Choose something you want.
- ▶ **Parent/Guardian signature** required

## ALTERNATE COURSE

*Select one alternate course request from the courses listed below. Courses are listed in alphabetical order. Students will be scheduled into their alternative course if their primary course requests cannot be fulfilled.*

Bass Clef Choir	Introduction to Business
Broadcast Journalism	Journalism / Mass Media
Debate	Music Appreciation
Design and Draw	Nutrition & Foods
Drama	Photojournalism
Fashion & Apparel I	PLTW Computer Sci. Essentials
Foundations of Fitness	PLTW/AP Computer Sci. Principles
French I	PLTW Intro. to Engineering Design
French II	Spanish I
German I	Spanish II
German II	Treble Clef Choir
Home Maintenance	Tournament Forensics
Housing & Interior Env.	Weight Training and Conditioning

## REQUIRED SIGNATURES

*Students should carefully consider course selections. Rules regarding schedule changes are included in the High School Career and Education Planning Guide (p. 16).*

STUDENT SIGNATURE: \_\_\_\_\_ DATE: \_\_\_\_\_

PARENT SIGNATURE: \_\_\_\_\_ DATE: \_\_\_\_\_



Welcome to Park Hill High  
School

**We look forward to working with  
you and your family!**