

# TULSA PUBLIC SCHOOLS

## Citizen Bond Oversight Committee January 24, 2023

Greg Shaw, Chairperson

TPS Staff:

Chris Hudgins, Exec. Dir. Bond

Ellen Duecker, Bond Project Mgr.

Stephanie Peaster, Bond Project Mgr.

Maddie Carter, Admin. Asst.





## Today's Agenda

- Welcome & Introductions: Greg Shaw
- Meet Burroughs Principal, Dee Tisdale
- Approval of minutes
- Bond Projects Reporting: Staff
  - Progress since last meeting
  - Summer planned projects
  - Renovations Explained: Stephanie Peaster, RCID
- Adjourn
- Next meeting: March



**Authorized: \$414MM**

---

**Received: \$108MM**

**Remaining: \$306MM**

**Next Bond Release: \$34.5MM  
February, 2023**

**2021 Bond  
Progress:  
Budget**

**6.5 years for  
project  
completion**



MANAGING DEPARTMENT PROJECT DESCRIPTION		AVAILABLE (UNSPENT) BUDGETS
ACADEMICS	INSTRUCTIONAL LEARNING RESOURC	358,123.36
	TEXTBOOKS & LEARNING MATERIALS	981,474.73
	EXCEPTIONAL STUDENT/SPEC NEEDS	235,192.87
	PROF LEARNING FOR TEACHERS	719,496.65
	AUDITORIUM IMPROVEMENTS	808,349.33
	LANGUAGE LEARNING RESOURCES	391,378.05
	SCHOOL PROJECT FUNDS	1,460,778.38
	POSTSECONDARY CAREER EDUCATION	312,298.64
	EARLY CHILDHOOD EXPANSION	96,964.00
	PROGRAM EXPANSIONS	9,847.66
	SCOREBOARDS/SOUNDSYS REPLACMNT	21,354.67
	WELLNESS AND PE	472,790.29
	FINE ARTS	114,687.66
	LIBRARY DIGITAL/PRINT RESOURCE	704,277.39
TECHNOLOGY	SECURITY CENTRAL OFFICE NEEDS	534,753.20
	MASS COMMUNICATION AUDIO/VISUA	140,450.58
	COMPUTERS/IWB & PERIPHERALS	1,795,406.51
	ACCESS DOORS	60,656.13
	CAMERAS/RADIOS/DISPATCH	281,071.68
	ALARMS	508,800.39
	BOND MANAGEMENT FEES	11,240.51
	PHONE/INTERNET NEEDS	34,518.87
	SOFTWARE/APPLICATION SUBSCRIPTION	1,264,097.00
FACILITIES	HVAC	284,979.91
	SECURE ENTRIES & FENCING	401,380.51
	ACCESSIBILITY	0.00
	PAVING	162.00
	ROOFING	0.00
	DINING/KITCHEN IMPROVEMENTS	106,074.63
	FURNITURE	246,703.14
	INTERIOR RENOVATIONS	10,195.85
	PLANNED-UNBID/ARCHITECTS/CONTINGENCY	116.13
	PROFESSIONAL SVC/BOND MNMT/ISSUANCE FEES	53,487.98
TRANSPORTATION	SCHOOL BUSES / ROUTE MAIN	1,537,818.09

**2021 Bond:**  
**Available Funds**  
**1/24/23**





## **Safe Learning Environments: Proposition 1**



## Interior Renovations



- Bell Elementary *under contract*
- Burroughs Elementary *under contract*
- Hawthorne Elementary *complete*
- Sequoyah Elementary *summer '25*
- Skelly Elementary *complete*
- Thoreau Demonstration *summer '25*
- Tisdale Elementary *summer '24*
- Whitman Elementary *summer '24*
- Eugene Field: partial *complete*
- Transportation: partial

Furniture budgets for all schools

## Accessibility, ADA Improvements

- Central Middle/High
- East Central High *restrooms complete*
- Edison High *complete*
- Education Service Center
- Hale High *in construction*
- Marshall Elementary
- McLain High
- Tulsa Learning Academy
- Tulsa Met (restrooms)

District-wide where needed:

- Exit modifications
- Elevator/chair lift refresh and replacements
  - Wright elevator, *complete*
  - Elevator upgrades: *Sequoyah, Webster, Thoreau under contract*
- Parking lot resurfacing: multiple annually *Anderson, Bell, Patrick Henry, Hawthorne, Skelly Upper & Lower, East Central Sr., Edison Sr., ESC, Phase 1 complete*
- LED lighting upgrades *complete 6/22*
- Sidewalk improvements *Ongoing*



*Hawthorne Elementary Summer 2022*



# Roofing



- Booker T Washington High
- Burroughs Elementary
- Carver Middle
- Disney Elementary *complete*
- Edison High *complete*
- Eisenhower International *under contract*
- Eliot Elementary *complete*
- Greenwood Leadership *complete*
- Lanier Elementary *complete*
- MacArthur Elementary *complete*
- McLain High
- Peary Elementary *complete*
- Phoenix Rising
- Rogers Fieldhouse
- Skelly Elementary *complete*
- Street School *complete*
- Webster Middle
- Webster Fieldhouse *in construction*

Roof renewals district wide



# Fence Replacements: Improve safety and school image



<i><b>Phase 1</b></i>	<i><b>Phase 2</b></i>	<i><b>Phase 3 Spring</b></i>
Rogers	Springdale	Bell
Hawthorne	Salk	Carnegie
Burroughs	Hoover	Cooper
Disney	Celia Clinton	Eliot
Clinton West	Kerr	Grissom
Marshall	Lewis & Clark	Mitchell
	Tulsa MET	Peary
	Lindbergh	Sequoyah
	McKinley	Unity
	Robertson	Whitman
		Patrick Henry

## Enhanced Secure Entries

All TPS Elementary Schools now have double entry systems!

Summer entry projects include:

- Central
- Hale Senior
- Memorial Senior
- East Central Senior
- Webster
- Tulsa MET
- Phoenix Rising
- North Star Academy at Alcott
- Memorial Middle

Secondary school entries are more challenging, extensive, and expensive than elementary sites.



## Dining & Kitchen Improvements

Create “hard-working spaces” in secondary schools as well as meeting district plan to refresh aging kitchen equipment and infrastructures.

- Central Middle/High
- East Central High
- Edison High *complete*
- Hale High
- McLain High
- Memorial High *under contract*
- Rogers Middle/High *under contract*
- Webster Middle/High
- Washington High
- Eliot *under contract*
- John Hope Franklin *operational (equipment 2/23)*

District-wide where needed:

- Kitchen equipment refresh
- Walk in freezer coolers (10 schools) *Hawthorne, Skelly Upper, J. H. Franklin complete*







## **Student & Classroom Technology: Proposition 2**

### **Robert Burton, Director of Client Services**





# Technology Network Systems & Security Upgrades

## Network Upgrades

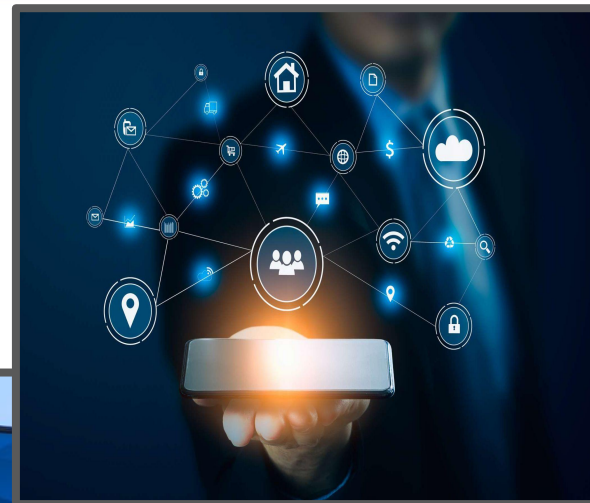
- District Phone System Replacement
  - *Complete by 2/14/23*
- Intercom Systems Replacements
  - *Complete schools by June '23*
- Radio system upgrade to 800 Mhz
  - *PO issued*

## Security Upgrades

- Lightning Prediction System *complete*
- SCADA security system upgrade
  - *75% complete 3/15/23*

## Marquees

- 85% complete *Cellular upgrades and secondary sites to complete*





## Transportation: Proposition 3





## Transportation

The district is completing 2015 bond purchases of buses, service vehicles and student transport van replacements, plus planning with teams for 2021 bond purchases. **2021 Projects Include:**

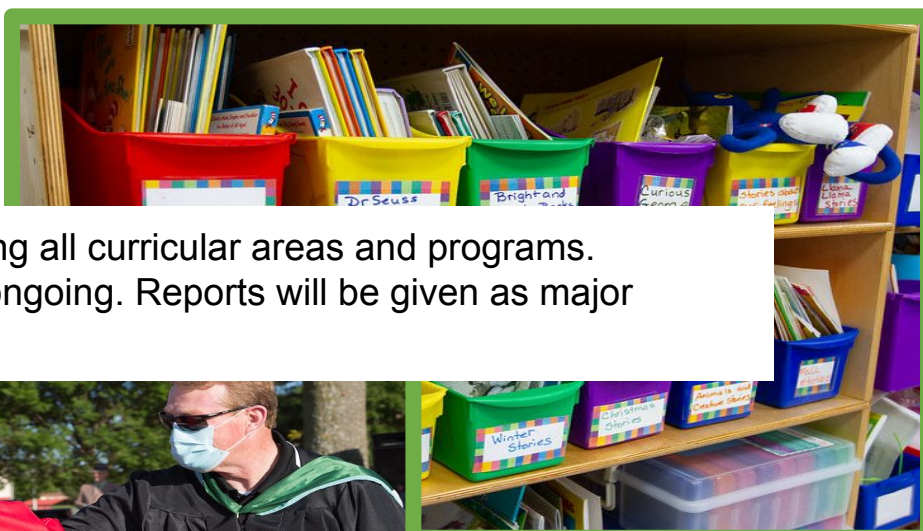
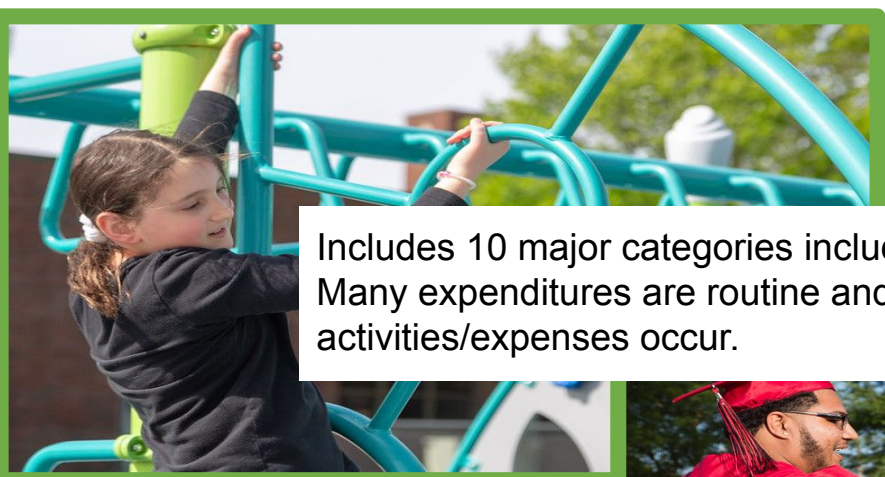


28 School Buses	26 CNG and 2 electric full size buses
15 Transportation Vans	10 Passenger vans for student transport: College/Careers (2), Senior Highs (12) , McKinney Vento (1),
18 Class A Buses	14 Passenger vans for student transport: College/Careers (1), Transportation (17)
116 Service vehicles	Includes replacement vehicles (pick-ups, SUVs, trucks, mowers, and other specialized service vehicles) for multiple departments including police (9), IT/security (8), warehouse (1), maintenance (14), and various departments including athletics, college/career, curriculum. Exact numbers will vary as replacement needs are identified throughout the bond period.
Vehicle Parts	Budget for service parts, tires, etc.
Software/Tech	Includes Zonar tracking, RFID bus badges, and other software systems



## Quality Learning Materials & Programs: Proposition 4





Includes 10 major categories including all curricular areas and programs. Many expenditures are routine and ongoing. Reports will be given as major activities/expenses occur.



## Fine Arts

### Projects

Auditorium improvements at all secondary and many elementary schools. *Work varies according to need. Improvements include new sound systems, stage lighting, house lighting, curtains, seats, rigging and accessibility improvements.*

District-wide fine arts upgrades and equipment as identified by school staff. *Includes musical instruments, equipment, uniforms and room upgrades.*

Webster band room addition

### Current Active Projects

- New sound control boards at BTW, East Central Jr High, Monroe, Lewis & Clark: *complete and Skelly starting*
- Lighting replacement at: McLain, East Central High, BTW, Monroe Demonstration *complete*  
Lewis & Clark *in progress*
- *PO issued for 10 sets curtains*
- Ongoing work: Surveying teacher's classroom needs resulting in multiple small projects. Ex. Install sinks, doorways, electrical receptacles. Purchase kilns, easels, etc.
- Band uniforms: Orders being fulfilled for all high schools. *East Central, Hale, Webster complete.*
- *Breaking ground 1/30/23*



# Library Digital & Print Resources

## Projects

## Current Active Projects

*Library books and materials: all sites*

- *Budgets released to schools: **complete***

*Technology equipment upgrades: all schools*

- *Budgets released to schools: **complete***

*Subscriptions to online resources: all sites*

- *Annual renewals district-wide **complete** for 2022/23*

*School library improvements where needed*

- *Key Elementary refresh **complete***
- *Kendall-Whittier refresh **complete except mural***
- *Central **POs issued***
- *Webster **POs issued***





## District Initiatives

### Projects

### Current Active Projects

Post-Secondary College & Career Expansion	<ul style="list-style-type: none"> <li>• <i>Career Tech Labs: computer upgrades at all program sites (phased 2022-23)</i></li> <li>• <i>Webster: Breaking ground 1/30/23</i></li> </ul>
STEM and Science Lab Upgrades	<ul style="list-style-type: none"> <li>• <i>New lab materials have been purchased for science labs across all secondary sites to refresh needs, aligned with grade level and hands on lab experiences.</i></li> <li>• <i>Hale and Webster lab upgrades in planning</i></li> </ul>
Greenwood Rising Museum	<ul style="list-style-type: none"> <li>• <i>iPads purchased and class visits underway</i></li> </ul>







## District Initiatives

### Projects

### *Current Active Projects*

Early Childhood Education  
Expansion

- *Skelly Primary & Hawthorne modifications **complete***

Program Expansion

- *Grissom Montessori resources and building modifications: **phase I complete***
- *Grissom Phase II: Add classroom sinks **in design for summer '23***
- *Eugene Field Montessori resources and modifications. **Complete***
- *Eugene Field: Trailer removal and replacement with adjacent property **in progress***



Eugene Field need to:

- Replace trailers
- Free up classroom spaces for additional students.

Opportunity: Purchase Tulsa Housing Authority metal building next to school.  
*The THA building now houses partner services supporting students.*

## Wellness / Playgrounds

- Bell *under contract*
- Carnegie *under contract*
- Council Oak *complete*
- Cooper *under contract*
- Eugene Fields *under contract*
- Hawthorne *complete*
- John Hope Franklin *complete*
- Kendall Whittier *3 complete*
- Kerr *complete*
- McKinley *complete*
- Project Accept *complete*
- Robertson *under contract*
- Skelly *complete*
- Salk *under contract*



District-wide where needed: ADA Playgrounds  
Fall Zone refresh coating  
Outdoor class spaces



# Athletics

BTW High	<ul style="list-style-type: none"> <li>Tennis Courts <i>complete</i></li> <li>Stadium Waterproofing/refresh <i>complete</i></li> </ul>
Central Middle / High	<ul style="list-style-type: none"> <li>Turf Replacement</li> <li>Track resurfacing</li> <li>Tennis Court Re-purpose</li> </ul>
East Central High	<ul style="list-style-type: none"> <li>Stadium Waterproofing</li> <li>Scoreboard/ Time Clock replacement <i>under contract</i></li> <li>Stadium Waterproofing/ refresh</li> <li>Fieldhouse &amp; YMCA collaboration <i>complete</i></li> </ul>
Edison Middle High	<ul style="list-style-type: none"> <li>Turf Replacement</li> <li>Track Resurfacing</li> <li>Tennis Court Re-topping</li> <li>Sound System Fieldhouse <i>complete</i></li> </ul>





## Athletics...Continued

Hale High	<ul style="list-style-type: none"> <li>• Turf replacement, practice field <i>complete</i></li> <li>• Multi-purpose facility</li> </ul>
Mclain High	<ul style="list-style-type: none"> <li>• Turf replacement, Driver Stadium</li> <li>• Track Resurfacing</li> <li>• Tennis court repurposing</li> <li>• Stadium waterproofing/refresh</li> </ul>
Memorial High	<ul style="list-style-type: none"> <li>• Turf replacement-Driver Stadium</li> <li>• Scoreboard/ Time Clock replace <i>under contract</i></li> <li>• Tennis Court replacement</li> <li>• Stadium waterproofing/refresh</li> </ul>
Rogers Middle / High	<ul style="list-style-type: none"> <li>• Turf replacement-Rogers Stadium <i>complete</i></li> <li>• Fieldhouse soundsystem <i>complete</i></li> <li>• Visitors bleachers &amp; restroom <i>under contract</i></li> <li>• Auxiliary gym (formerly) All-weather softball field</li> </ul>
Webster Middle / High	<ul style="list-style-type: none"> <li>• Turf replacement</li> <li>• Fieldhouse sound system <i>complete</i></li> <li>• Stadium waterproofing/refresh</li> </ul>



## Athletics...*Continued*

### Middle School Practice Field Improvements

- East Central Middle
- Memorial Middle
- Monroe Demonstration
- Thoreau Demonstration

### District wide where needed

- Pool upgrades
- Sound systems *Edison, Webster & Rogers, East Central Fieldhouses complete*
- Scoreboards Memorial and East Central *under contract*
- Helmets *phase 1 complete*
- Uniforms

### District wide

- Physical Education equipment funds for all schools *School orders complete*

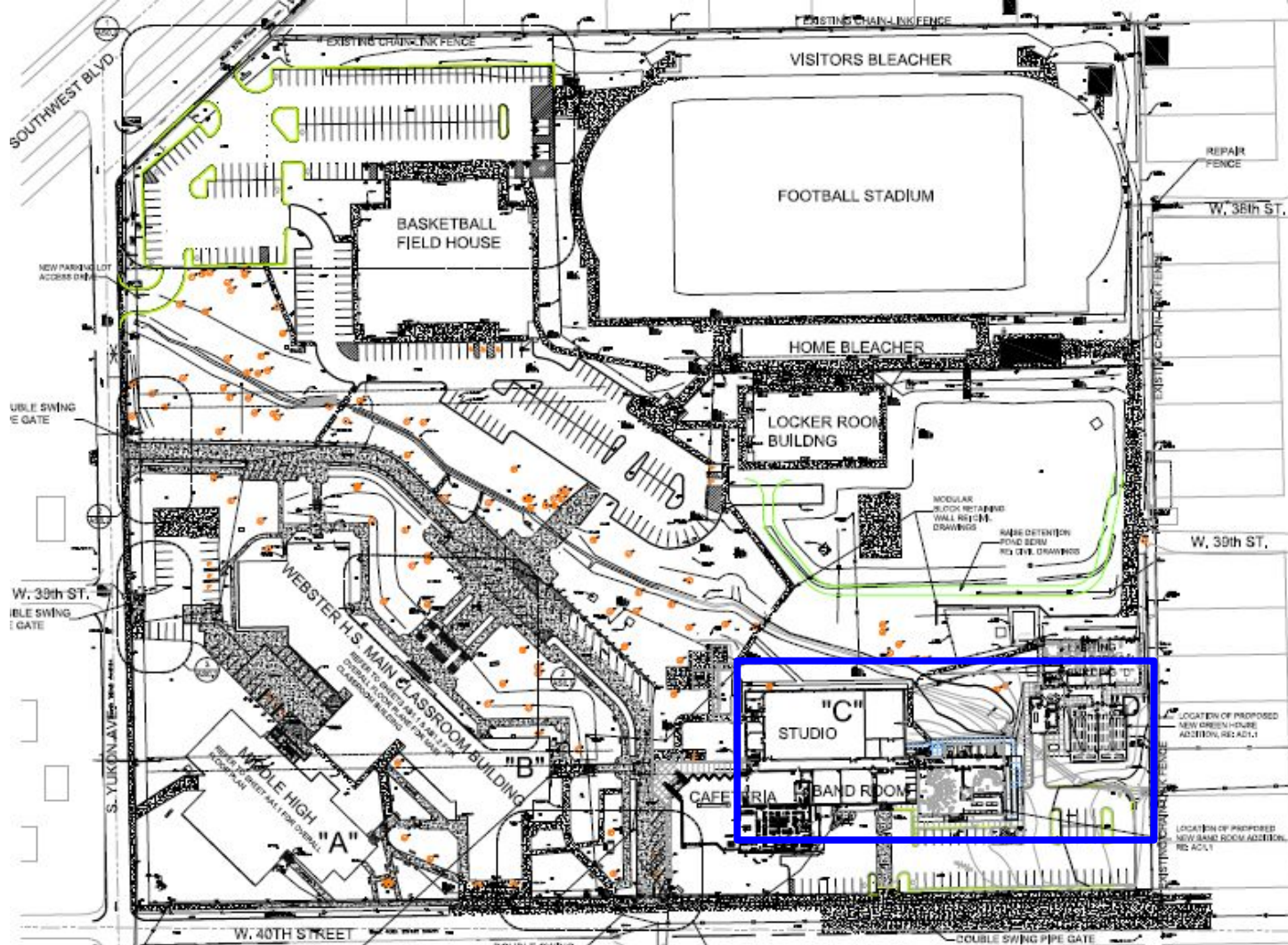


## ***Looking ahead...***

### Projects in process for summer 2023

- Renovations: Burroughs Elementary & Bell Elementary
- Kitchen/Dining Remodels: Memorial Senior & Eliot Elementary, Burroughs and Bell
- Enhanced Secure Entries: Multiple secondary sites
- HVAC: Hale Senior High (Federally funded, managed by Bond Office)
- Rogers: Visitor stands and concessions
- Webster: Band Room and Aquaponics / Hydroponics labs
- Academics: Adopt secondary curricula for ELA, ELD, and world languages
- Data Center Upgrades: Backup data systems





Webster...  
Groundbreaking  
1/30/23  
Target Completion  
Spring 2024

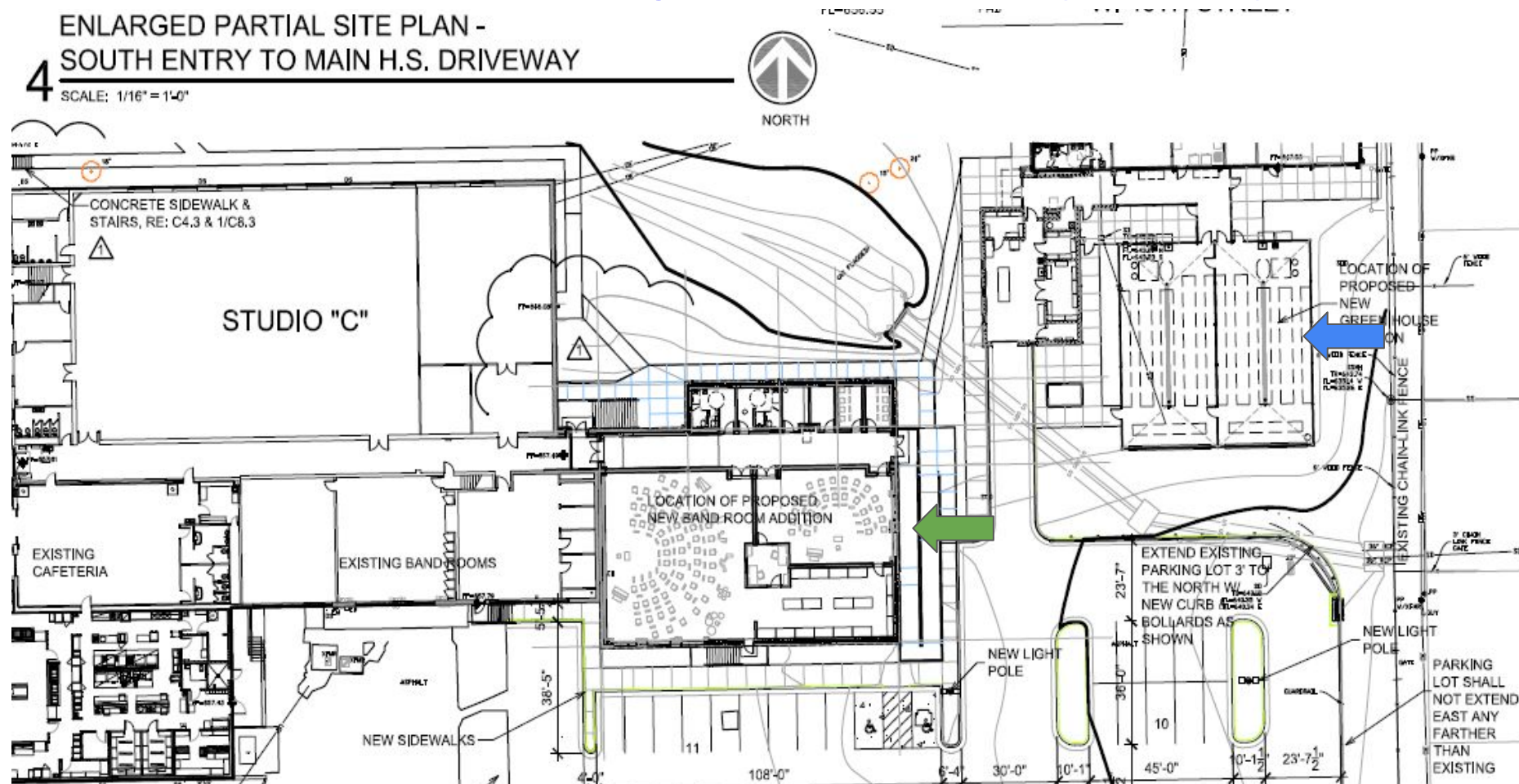
Band Room  
Aquaponics /  
Hydroponics Labs

# Webster Bond Room and Ag Education... Target Spring 2024

## ENLARGED PARTIAL SITE PLAN - SOUTH ENTRY TO MAIN H.S. DRIVEWAY

4

SCALE: 1/16" = 1'-0"



**SITE PLAN LEGEND:**

[Pattern]	EXISTING SITE CONCRETE
[Pattern]	NEW SITE CONCRETE
[Pattern]	LANDSCAPED GRASS
DR	DRIVEWAY

**GENERAL NOTES:**

1. SITE PROVIDED SHOWN FOR REFERENCE ONLY. DIMENSIONS FOR SITE PREP, LAYOUT AND DIMENSIONS.
2. LANDSCAPED GRASS NOT TO BE USED TO CONSIDER TO STABILIZE.
3. OWNER PRIOR TO MOVING OR REMOVING SHALL VERIFY LOCATION OF EXISTING UTILITIES BEFORE ANY CONSTRUCTION BEGINS.
4. INSTALL SET BACKS AS REQUIRED DISTANCE FROM SIDEWALK NOTED.
5. PROTECT ALL EXISTING UTILITIES AND ALL NEW UTILITIES SHALL NOT BE MOVED OR LIFTED UP TO DIRECTION OF TRAVEL. SHALL NOT BE MOVED.

610 Industrial Avenue  
 Sapulpa, OK 74066  
 918-346-3827  
**"The Team You Trust"**

---

This document and the ideas and designs incorporated herein  
 are the property of the undersigned and shall remain the property of the  
 undersigned until payment in full has been received. It is understood  
 in part that the undersigned shall retain the right of reproduction  
 in whole or in part.  
 © 2002 Intellectual Property  
 All Rights Reserved

---

**CONSULTANT:**  
 CIVIL ENGINEER  
 WALLACE DESIGN COLLECTIVE  
 401 NORTH HILL, # 200  
 TULSA, OKLAHOMA  
 74103-0202

---

**CONSULTANT:**  
 STRUCTURAL ENGINEER  
 JACKSON ENGINEERING, INC.  
 1000 LAND CENTER STREET  
 TULSA, OKLAHOMA  
 74103-2027

---

**CONSULTANT:**  
 MEP ENGINEER  
 ALLEN ENGINEERING GROUP  
 4401 SOUTH GEMINI AVE., SUITE A  
 TULSA, OKLAHOMA  
 74116-3400  
 GASEIGHT DESIGN

---

**CONSTRUCTION DOCUMENTS**  
 08/10/2022

**WILL ROGERS  
 STADIUM VISITOR'S  
 ADDITION**

3000 EAST 5th PLACE  
 TULSA, OKLAHOMA 74112

---

03/20/2024



## Renovations Explained: Stephanie Peaster, RCID

