



Guided by faith, families and purpose...





$\sqrt{123}$

MOSCHOLARS[☆]



- Scholarship Account
- Funded by tax credit donations
- Eligible based on income or IEP/ISP
- \$6,375 awarded per academic year, per student from K-12

STUDY
HARD!



TODAY & TOMORROW



CHANGING THE FUTURE — ONE CHILD AT A TIME



WHO QUALIFIES?



Must be a resident in Saint Louis City, Saint Louis County, St. Charles County, and Jefferson County

IEP's

- Private / Archdiocesan School
- Not intended for students remaining in public school
- Must be an approved 'IEP/ISP' developed under the Federal Individuals with Disabilities Act (IDEA)

Income Eligibility

- Must have attended a traditional public or charter school for 1 semester within the year prior to applying

OR

- Entering Kindergarten or 1st Grade



TODAY & TOMORROW

CHANGING THE FUTURE — ONE CHILD AT A TIME





$\sqrt{123}$



MOSCHOLARS PARTNER VENDORS

STUDY
HARD!



FACTS Management – Applications



ClassWallet – Funds transfers

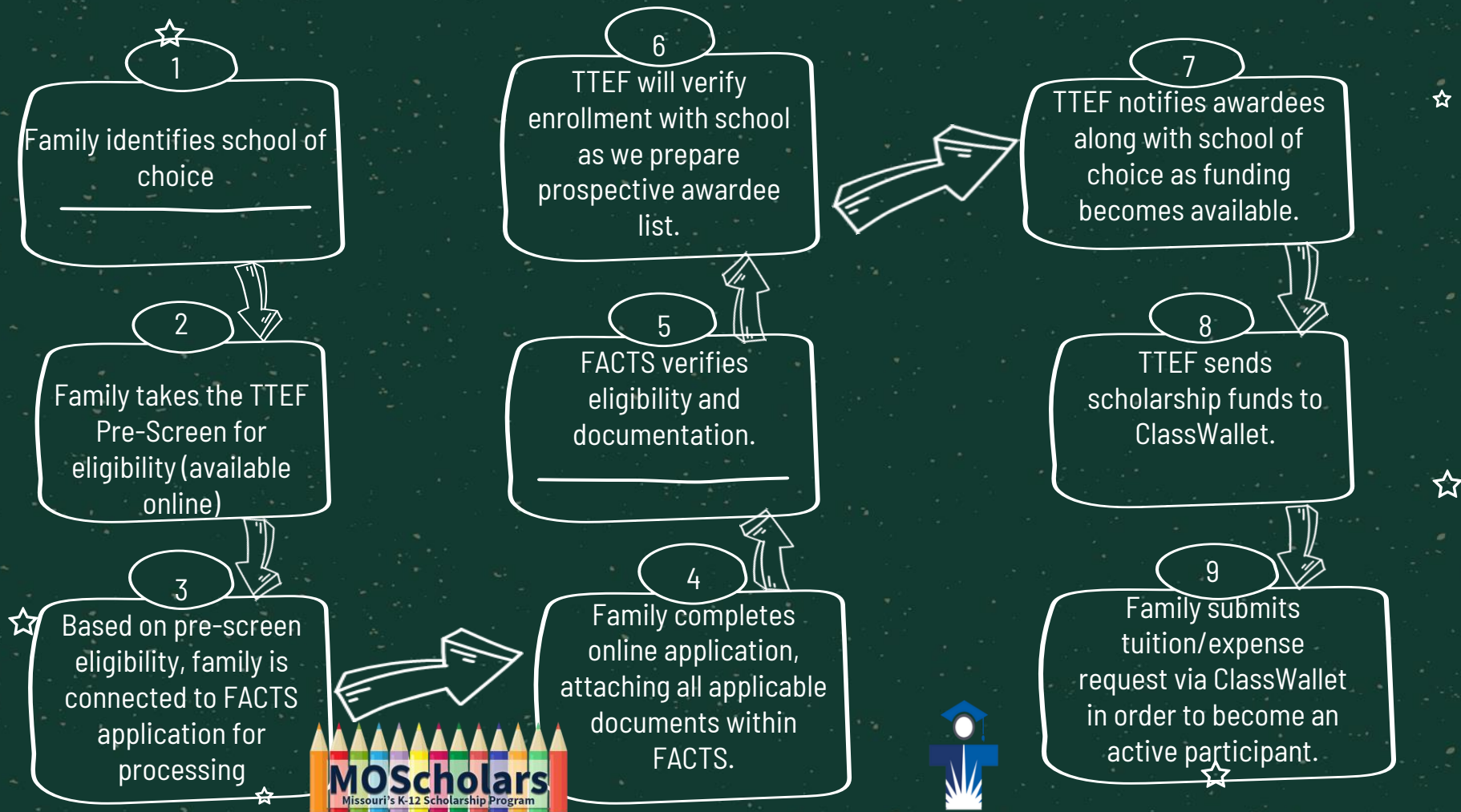


+ x ÷

TODAY & TOMORROW



CHANGING THE FUTURE — ONE CHILD AT A TIME





WHAT NOW....



Action Items



Review your current income eligible Kindergarten and 1st grade students



Evaluate opportunities for incoming/ present transfer students who are eligible based on income or IEP



Consider current students who have an established IEP or may have transferred to your educational site from a public/charter school and may meet the income guidelines



TODAY & TOMORROW

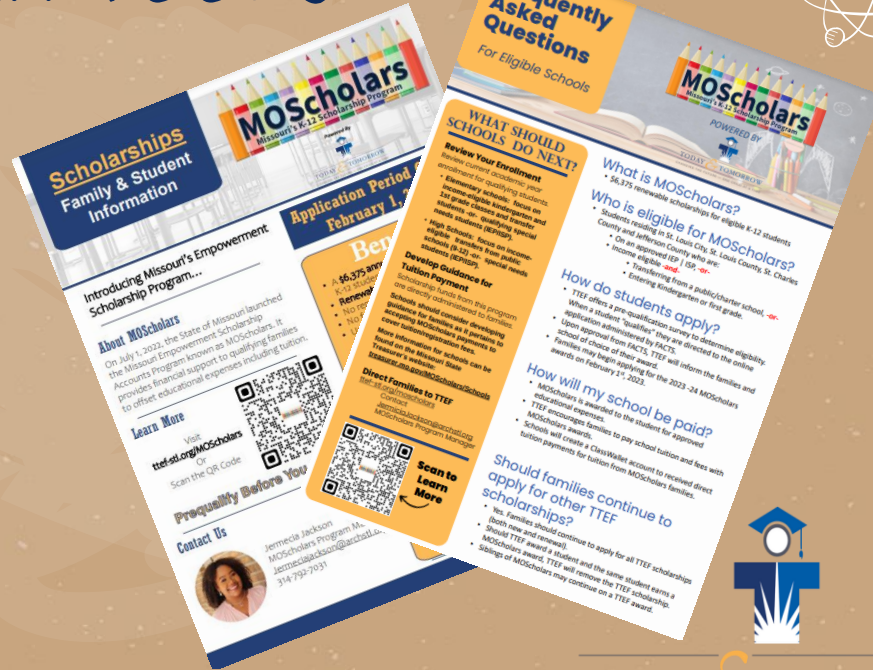


CHANGING THE FUTURE — ONE CHILD AT A TIME



USE OUR TOOLS

- TTEF December Newsletter
- TTEF Website – <https://ttef-stk.org>





TTEF SCHOLARSHIP TEAM



Jermecia Jackson

MOScholars

(314) 792-7043

☆ jermeciajackson@archstl.org



Laura George
TTEF

(314) 792-7623

laurageorge@archstl.org



TODAY & TOMORROW

CHANGING THE FUTURE — ONE CHILD AT A TIME