

Roselle Public Library District

New Library Campus



Presented to Keeneyville School District 20
January 26, 2023

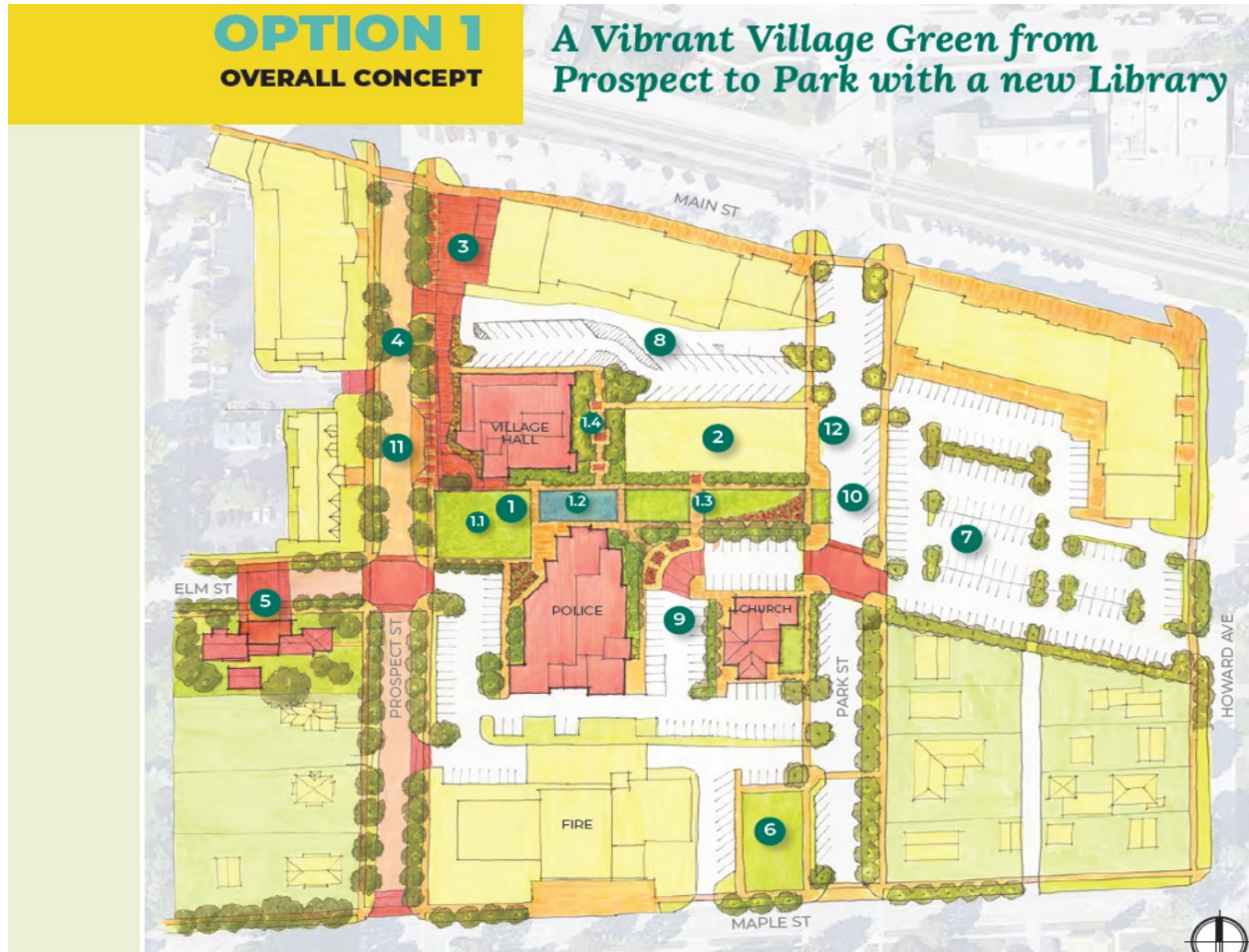


A New Library Campus to Address Resident-Identified Priorities

- Designated areas for ALL age groups
- Indoor study and meeting spaces
- Drive-up window for materials pick-up and drop-off
- Makerspace for hands-on learning and creating
- Meet and greet areas (i.e. spacious lobby, patio and balcony)
- More accessible entrance
- Increased parking for library and Mainstreet
 - Covert Elm Street cul-de-sac to library
 - Expand existing parking lot across from Park Street
- Village green used as a shared community gathering space
 - Outdoor library programs for ALL ages (story times, fitness and wellness)
 - Outdoor markets (food, arts & crafts)
 - Picnics, gatherings
 - Concerts on the lawn

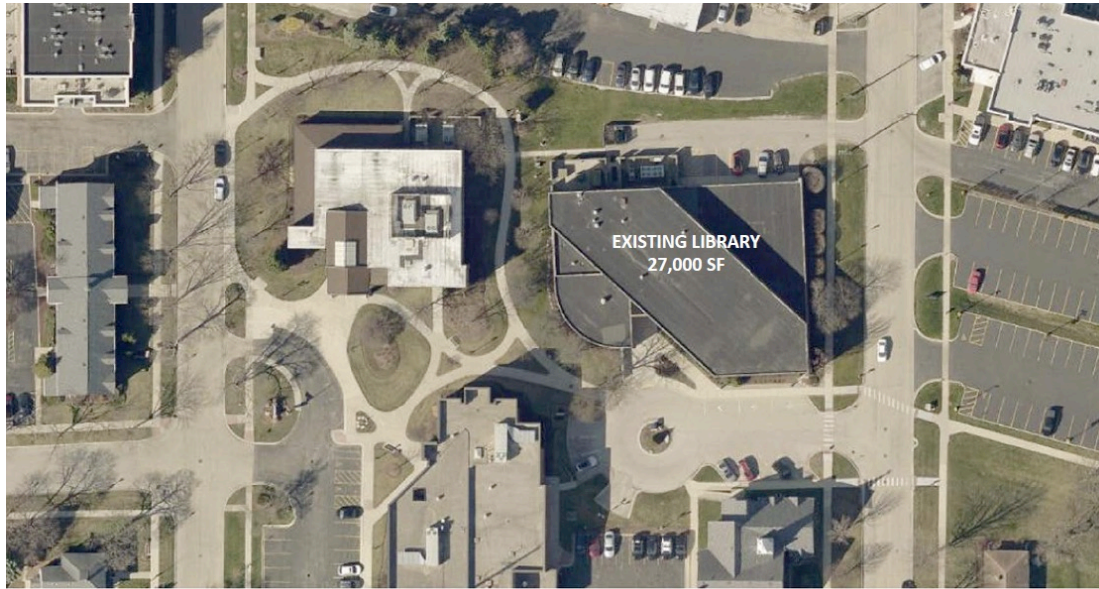


Revitalized Roselle Main Street Area



A new Roselle Library campus will serve as cornerstone of the new municipal campus





CURRENT AERIAL VIEW



PROPOSED SITE PLAN

product architecture + design

New Amenities

- 32,250 square feet
- Drive Thru (A)
- Drop-Off Space (B)
- Community Green Space (C)
- Expanded Parking (D)





- Use of Natural Light
- Modern, Open Feel
- Welcoming Design
- Building is ADA Compliant and Fully Accessible



ENTRANCE

product architecture + design





EAST VIEW



NORTHEAST VIEW

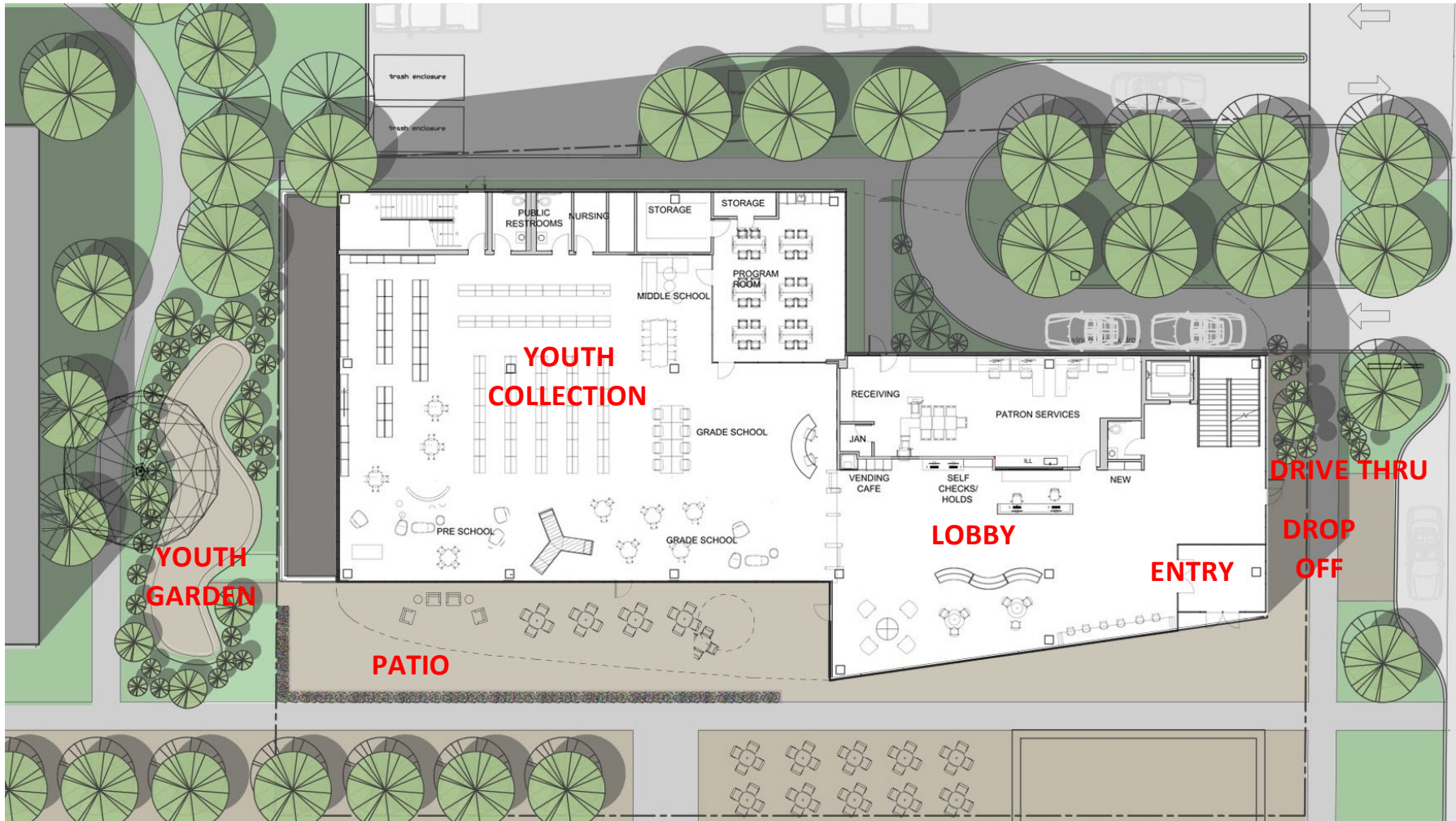


PATIO

- Intuitive Design
- Easy Drive-Up Access
- Drive Thru for Busy Patrons
- Quiet Green Space to Read or Visit



FIRST FLOOR PLAN (+/-10,250 SF)



product architecture + design





PRESCHOOL SPACE



OUTDOOR CHILDREN'S SPACE



YOUTH SPACE

product architecture + design

- Colorful Interactive Spaces
- Furniture Made Just for Them
- Hands-On Learning
- Private Room for Nursing Women
- Outdoor Spaces for Activities and to Learn About Nature and Gardening
- Native Plants



LOBBY

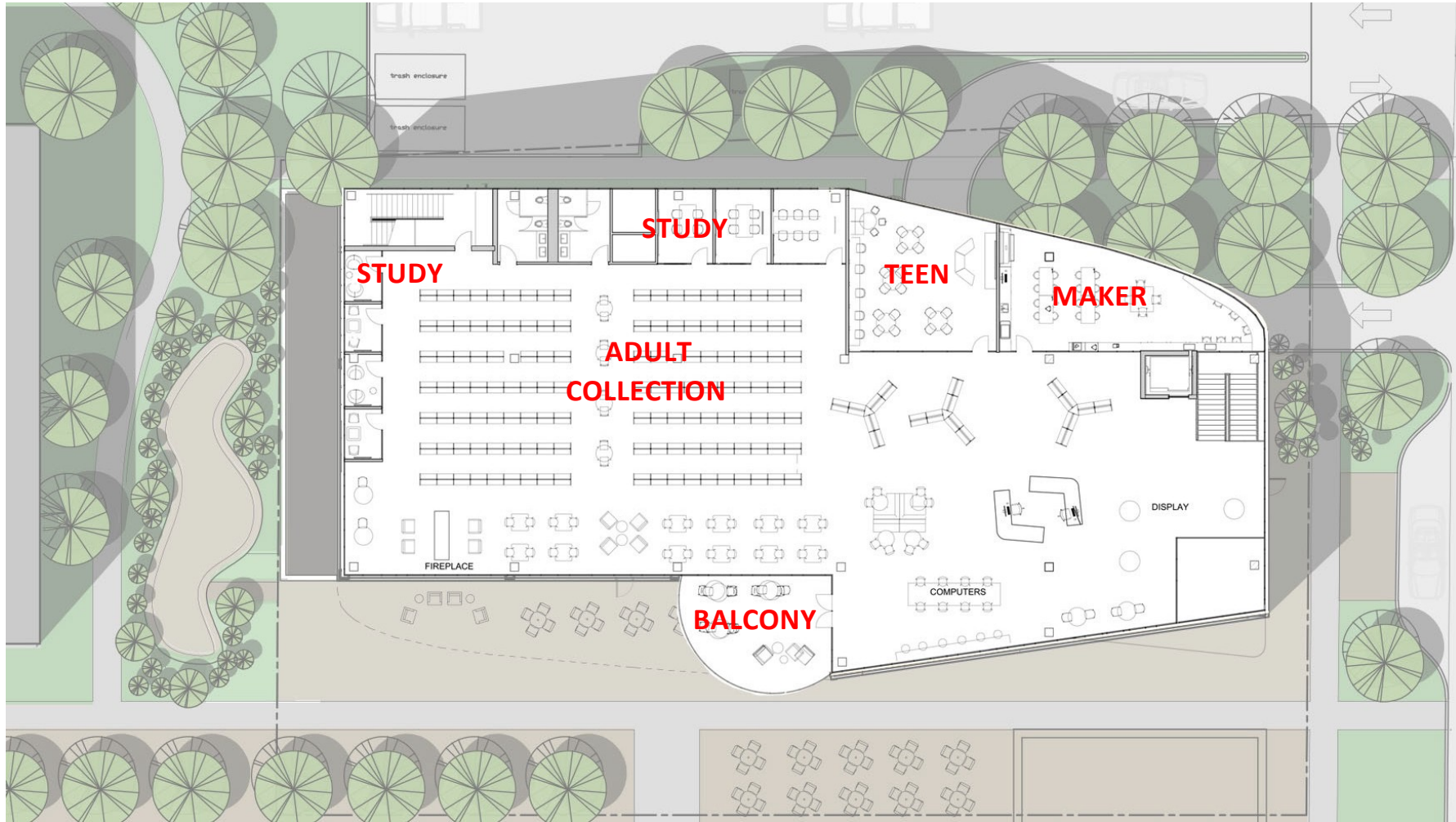


- Open, Welcoming Space
- Self-Service and Pick-Up Area
- Café Space





SECOND FLOOR PLAN (+/-11,750 SF)



product architecture + design



ADULT LOUNGE



- Coffee House-Style Seating
- Spaces to Collaborate, Visit or Read Quietly
- Cozy Environment

product architecture + design





MIDDLE SCHOOL SPACE



TEEN SPACE

product architecture + design

- Literary and Music Collections Just for Them
- Homework Space
- Game Consoles
- Space to Socialize





STUDY ROOMS



MAKER SPACE

product architecture + design

- Spaces to be Studios and Creative
- 3D Printers
- Sewing Machines
- High-Tech Equipment
- Makers Display Wall
- Workshops and Classes





OUTDOOR BALCONY



- Seating Area for Visiting or Quiet Time
- Overlook Community Green Space



BASEMENT FLOOR PLAN (+/-10,250 SF)



product architecture + design



MEETING ROOM



product architecture + design

- Large and Small Meeting Spaces
- Moveable Room Dividers
- State-of-the-Art Audio and Visual Equipment



Roselle Library District Summary of Taxpayer Impact For Referendum Options

Preliminary, Subject to Change

Total Referendum Proceeds.....
Estimated Total Debt Service (1).....
Estimated Annual Debt Service Payment.....
Estimated TIC (1) (2).....
Estimated B&I Tax Rate Increase due to Referendum (2).....

Estimated Home Value (2)

\$100,000 Home
\$200,000 Home
\$267,000 Median Value Home
\$300,000 Home
\$400,000 Home

Market Rates as of January

\$22,000,000 Referendum	
\$	22,000,000
\$	34,444,025
\$	1,722,201
	4.34%
	0.221
Estimated Payment For B&I Portion of the Library's Tax Bill	
\$	56
	129
	179
	203
	276

(1) Rates based upon market conditions as of January 6, 2023 and recent bond sales which PMA believes to be accurate and reliable, plus 0.50%.

(2) Actual tax rates and payments may vary based on the County the taxpayer is located, EAV growth, State Law changes, property tax rate initiatives and other factors. Includes \$8,000 homeowner exemption. The homeowner exemption and senior exemption increase to \$8,000 beginning in Levy Year 2023.

Voting Information

When can I vote?

You can vote early, starting March 20 or on Election Day.

Learn more about voting in your county at:

CookCountyClerkIL.Gov **OR** DupageCounty.Gov/Election



What is the ballot language?

When you cast your vote, you will see the following language: *Shall the bonds of the Roselle Public Library District, DuPage and Cook Counties, Illinois, in the amount of \$22,000,000 be issued for the purpose of erecting a library building to replace the existing Roselle Public Library building and furnishing necessary equipment and acquiring electronic data storage and retrieval facilities in connection therewith?*



More Information

For more information about the Roselle Public Library District or the referendum:

Rosellepld.org/Building_our_Future
630.529.1641

Samantha Johnson, Executive Director
Katie Smith, President, Library Board of Trustees



Thank You

