

Frequently Asked Questions

For Eligible Schools



POWERED BY



TODAY & TOMORROW

CHANGING THE FUTURE — ONE CHILD AT A TIME

WHAT SHOULD SCHOOLS DO NEXT?

Review Your Enrollment

Review *current academic year enrollment* for qualifying students.

- **Elementary schools:** focus on income-eligible kindergarten and 1st grade classes and transfer students -or- qualifying special needs students (IEP/ISP).
- **High Schools:** focus on income-eligible transfers from public schools (9-12) -or- special needs students (IEP/ISP).

Develop Guidance for Tuition Payment

Scholarship funds from this program are directly administered to *families*.

Schools should consider developing guidance for families as it pertains to accepting MOScholars payments to cover tuition/registration fees.

More information for schools can be found on the Missouri State Treasurer's website:
treasurer.mo.gov/MOScholars/Schools

Direct Families to TTEF

ttef-stl.org/moscholars

Contact

JermiciaJackson@archstl.org

MOScholars Program Manager



Scan to Learn More

What is MOScholars?

- \$6,375 renewable scholarships for eligible K-12 students

Who is eligible for MOScholars?

- Students residing in St. Louis City, St. Louis County, St. Charles County and Jefferson County who are:
 - On an approved IEP | ISP, **-or-**
 - Income eligible **-and-**
 - Transferring from a public/charter school, **-or-**
 - Entering Kindergarten or first grade.

How do students apply?

- TTEF offers a pre-qualification survey to determine eligibility. When a student “qualifies” they are directed to the online application administered by FACTS.
- Upon approval from FACTS, TTEF will inform the families and school of choice of their award.
- Families may begin applying for the 2023 -24 MOScholars awards on February 1st, 2023.

How will my school be paid?

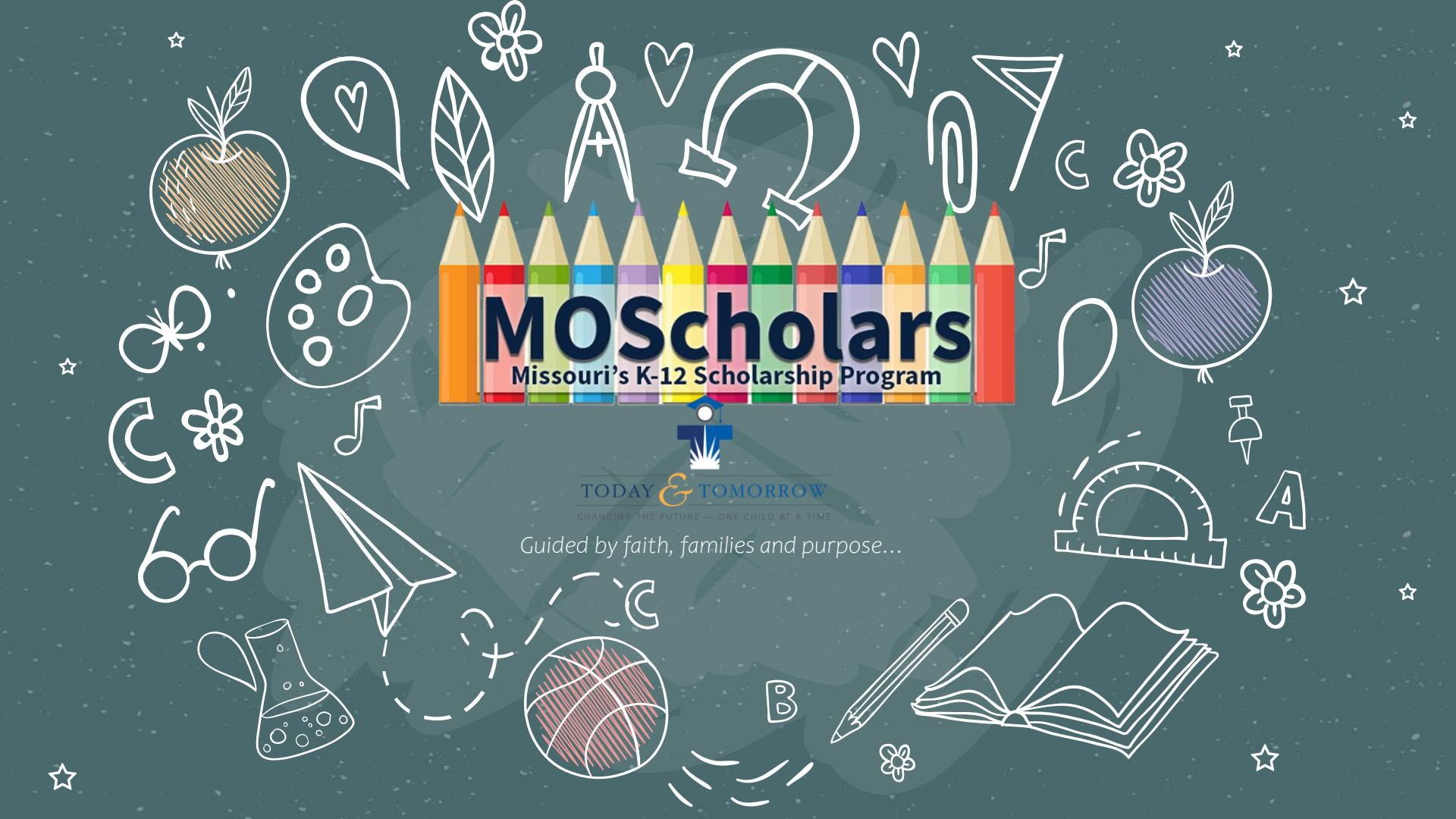
- MOScholars is awarded to the student for approved educational expenses.
- TTEF encourages families to pay school tuition and fees with MOScholars awards.
- Schools will create a ClassWallet account to receive direct tuition payments for tuition from MOScholars families.

Should families continue to apply for other TTEF scholarships?

- Yes. Families should continue to apply for all TTEF scholarships (both new and renewal).
- Should TTEF award a student and the same student earns a MOScholars award, TTEF will remove the TTEF scholarship.
- Siblings of MOScholars may continue on a TTEF award.



Guided by faith, families and purpose...





$\sqrt{123}$

MOSCHOLARS[☆]



- Scholarship Account
- Funded by tax credit donations
- Eligible based on income or IEP/ISP
- \$6,375 awarded per academic year, per student from K-12

STUDY
HARD!



TODAY & TOMORROW



CHANGING THE FUTURE — ONE CHILD AT A TIME



WHO QUALIFIES?



Must be a resident in Saint Louis City, Saint Louis County, St. Charles County, and Jefferson County

IEP's

- Private / Archdiocesan School
- Not intended for students remaining in public school
- Must be an approved 'IEP/ISP' developed under the Federal Individuals with Disabilities Act (IDEA)

Income Eligibility

- Must have attended a traditional public or charter school for 1 semester within the year prior to applying

OR

- Entering Kindergarten or 1st Grade



TODAY & TOMORROW

CHANGING THE FUTURE — ONE CHILD AT A TIME





$\sqrt{123}$



MOSCHOLARS PARTNER VENDORS

STUDY
HARD!



FACTS Management – Applications



ClassWallet – Funds transfers

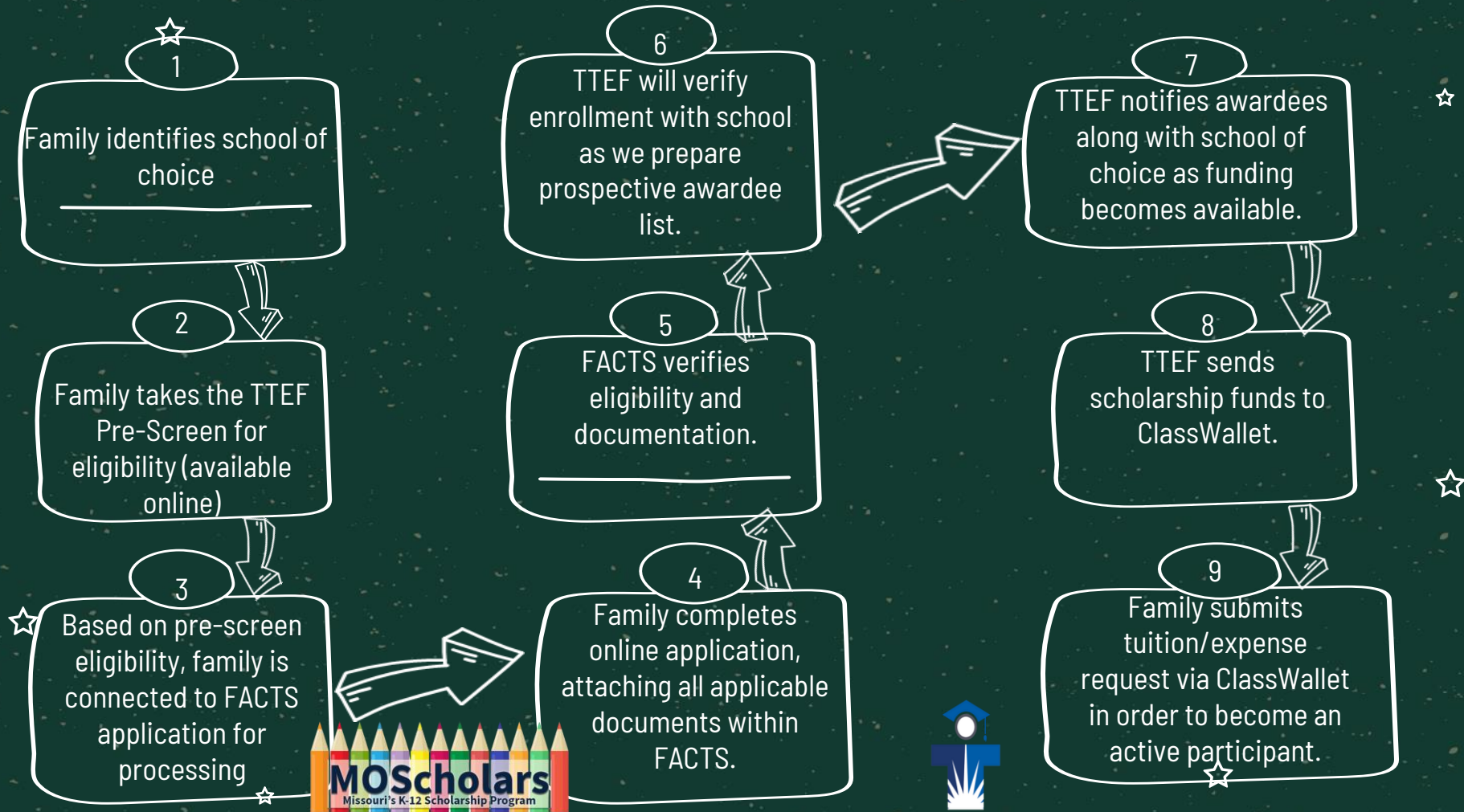


+ x ÷

TODAY & TOMORROW



CHANGING THE FUTURE — ONE CHILD AT A TIME





WHAT NOW....



Action Items



Review your current income eligible Kindergarten and 1st grade students



Evaluate opportunities for incoming/ present transfer students who are eligible based on income or IEP



Consider current students who have an established IEP or may have transferred to your educational site from a public/charter school and may meet the income guidelines



TODAY & TOMORROW

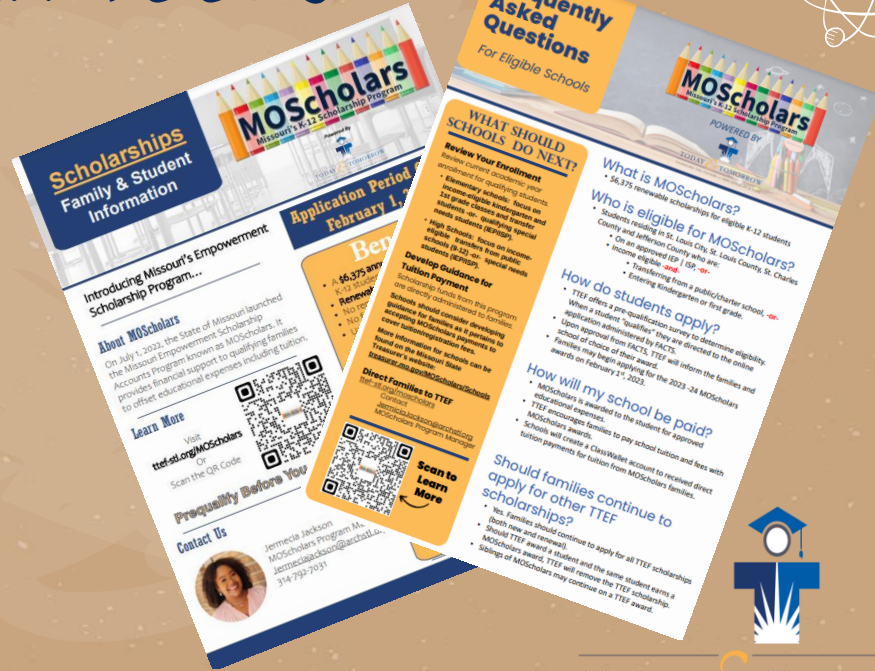


CHANGING THE FUTURE — ONE CHILD AT A TIME



USE OUR TOOLS

- TTEF December Newsletter
- TTEF Website – <https://ttef-stk.org>





TTEF SCHOLARSHIP TEAM



Jermecia Jackson

MOScholars

(314) 792-7043

☆ jermeciajackson@archstl.org



Laura George
TTEF

(314) 792-7623

laurageorge@archstl.org



TODAY & TOMORROW

CHANGING THE FUTURE — ONE CHILD AT A TIME