



Comprehensive Annual Financial Report

FISCAL YEAR
July 1, 2016—June 30, 2017

WALLED LAKE CONSOLIDATED SCHOOL DISTRICT



2014 Safety, Security and Technology Bond
Walled Lake Central High School

Every Child, Every Day!

Walled Lake Consolidated School District | 850 Ladd Road—Building D | Walled Lake MI 48390
Phone: 248.956.2000 | Fax: 248.956.2145 | Email: wlcsd.org

Walled Lake Consolidated School District

Comprehensive Annual Financial Report with Supplemental Information for the Fiscal Year Ended June 30, 2017

Kenneth Gutman
Superintendent of Schools

BOARD OF EDUCATION

Christopher Titus
President

Kathy Lyall
Vice President

Greg Janicki
Secretary

Nancy van Leuwen
Treasurer

Peggy Casagrande
Trustee

Denise Dunn
Trustee

Marc Siegler
Trustee

Prepared by:
Teri L. Les: Assistant Superintendent of Business Services

Walled Lake Consolidated School District

Contents

Introductory Section

Letter of Transmittal	i-ix
District Officials	x
Organizational Chart	xi
Certificate of Excellence - Association of School Business Officials International	xii

Financial Section

Independent Auditor's Report	1-2
-------------------------------------	------------

Management's Discussion and Analysis	3-12
---	-------------

Basic Financial Statements

Government-wide Financial Statements:	
Statement of Net Position	13
Statement of Activities	14
Fund Financial Statements:	
Governmental Funds:	
Balance Sheet	15
Reconciliation of the Balance Sheet of Governmental Funds to the Statement of Net Position	16
Statement of Revenue, Expenditures, and Changes in Fund Balances	17
Reconciliation of the Statement of Revenue, Expenditures, and Changes in Fund Balances of Governmental Funds to the Statement of Activities	18
Fiduciary Funds - Student Activities Agency Funds -	
Statement of Fiduciary Assets and Liabilities	19
Notes to Financial Statements	20-42

Required Supplemental Information	43
--	-----------

Budgetary Comparison Schedule - General Fund	44
Note to Required Supplemental Information	45
Schedule of Walled Lake Consolidated School District's Proportionate Share of the Net Pension Liability	46
Schedule of Walled Lake Consolidated School District's Contributions	47

Walled Lake Consolidated School District

Contents (Continued)

Other Supplemental Information	48
Nonmajor Governmental Funds:	
Combining Balance Sheet	49-50
Combining Statement of Revenue, Expenditures, and Changes in Fund Balances	51-52
Budgetary Comparison Schedule - Special Revenue Fund - Cafeteria Fund	53
Budgetary Comparison Schedule - Debt Service Funds	54-55
Budgetary Comparison Schedule - Capital Projects Funds	56
Budgetary Comparison Schedule - Other Special Revenue Funds	57
Statement of Changes in Fiduciary Assets and Liabilities - Student Activities (Agency) Fund	58
Schedule of Bonded Indebtedness	59
<u>Statistical Section</u>	60
Note to Statistical Section	61
Financial Trend Information:	
Net Position by Component	62-63
Changes in Governmental Net Position	64-65
Fund Balances - Governmental Funds	66-67
Changes in Fund Balances - Governmental Funds	68-69
Revenue Capacity Information:	
Taxable Value and Actual Value of Taxable Property	70-71
Direct and Overlapping Property Tax Rates	72-73
Principal Property Taxpayers	74
Property Tax Levies and Collections	75
Debt Capacity Information:	
Ratios of General Bonded Debt Outstanding	76-77
Direct and Overlapping Governmental Activities Debt	78
Legal Debt Margin	79-80
Demographic and Economic Information:	
Demographic and Economic Statistics	81
Principal Employers	82
Operating Information:	
Full-time Equivalent School District Employees	83-84
Operating Indicators	85
Capital Asset Information	86-87

Federal Awards Supplemental Information

Issued Under
Separate
Cover



Walled Lake Consolidated Schools

Educational Services Center
850 Ladd Road, Building D
Walled Lake, MI 48390
Phone: 248/956-2000
Fax: 248/956-2123

September 25, 2017

Dear Citizens and Board Members:

The Comprehensive Annual Financial Report of Walled Lake Consolidated School District (the "School District") for the fiscal year ended June 30, 2017 is hereby submitted. This report was prepared by the business department and contains all activities under the control of the Board of Education. Responsibility for both the accuracy of the information and the completeness and fairness of the presentation, including all disclosures, rests with the School District. To the best of our knowledge and belief, the enclosed information is accurate in all material respects and is reported in a manner designed to present fairly the financial position and results of operations of the School District as measured by the School District's government-wide financial activity and the activity of its various funds, with all disclosures necessary to enable the reader to gain an understanding of the School District's financial activities.

Reporting Entity and Services

Walled Lake Consolidated School District is an independent reporting entity fully meeting the criteria established by the Governmental Accounting Standards Board. All funds of the School District are included in this report. The School District does not have component units.

The financial section reports separately the government-wide activities, the governmental fund types, and the fiduciary fund type administered by the board.

Report Organization

This Comprehensive Annual Financial Report was prepared to meet the needs of a broad spectrum of financial statement readers and is divided into the following major sections:

Introductory Section

This section introduces the reader to Walled Lake Consolidated School District and to this report. Included are facts about the School District, this transmittal letter, and the School District's organizational chart. This letter of transmittal is designed to complement the management's discussion and analysis and should be read in conjunction with it. The management's discussion and analysis can be found in the financial section of this document.

Financial Section

The independent auditor's report, management's discussion and analysis, government-wide financial statements, fund financial statements, and notes to the financial statements are included in this section. These are the School District's basic financial statements and provide an overview for readers who require less detailed information than is contained in the balance of the report. In addition to the basic financial statements, this section includes required and other supplemental information.

The management of the board is responsible for the financial information and representations contained in the financial statements and other sections of the annual report. In preparing the financial statements, it is necessary that management make informed estimates and judgments based on currently available information of the effects of certain events and transactions.

The basic financial statements and supplemental information presented in the financial section of this report present fairly and with full disclosure the financial position and results of the financial operation of the funds in conformity with accounting principles generally accepted in the United States of America and demonstrate compliance with finance-related legal and contractual provisions.

The basis of accounting for each fund is consistent with the activities and objectives of the fund as a fiscal and accounting entity.

The required and other supplemental information contain a more detailed analysis of revenue and expenditures that are compared to the 2016-2017 budgets for the General, Special Revenue, Debt Service, and Capital Projects Funds. In addition, there are combining schedules shown by fund type with totals that agree with those reflected in the basic financial statements section.

Statistical Section

Although this section contains substantial financial information, these tables differ from financial statements in that they present some nonaccounting data, compare 10 years of data, and are intended to reflect economic data, financial trends, and the fiscal capabilities of the School District.

About Walled Lake Consolidated School District

The Community

The School District, located in southwestern Oakland County, encompasses more than 55 square miles and includes all or part of nine governmental units: the Cities of Farmington Hills, Novi, Orchard Lake, Walled Lake, and Wixom, the Townships of Commerce, West Bloomfield, and White Lake, and the Village of Wolverine Lake.

Residents may take advantage of many recreational and cultural opportunities. In 45 minutes or less, one can visit the city of Detroit with its fine museums, restaurants, and entertainment. Cranbrook Institute, Greenfield Village, the University of Michigan, Oakland University, Eastern Michigan University, Michigan State University, Wayne State University, and the University of Detroit Mercy are within approximately an hour's drive. More than 40 lakes and several riding stables, golf courses, tennis clubs, and ski areas serve the immediate area.

The Educational Program

The School District has 12 elementary schools (K-5), four middle schools (6-8), three high schools (9-12), an educational services center, a maintenance/transportation building, and an outdoor education center.

The School District has a comprehensive educational program for students of all ages. This includes both an early intervention preschool program and a reading recovery program in our Title One buildings. In addition to a solid, basic core academic curriculum of language arts, math, science, and social studies, students also have a variety of extended programs such as K-12 fine arts, physical education, and advanced technology programs. World languages and technical education begin at the middle school, as well as extracurricular offerings, including athletics and various clubs. A fee-based before-and-after-school activities program, After School Adventures, provided enrichment for 1,822 elementary students who participated in a variety of classes including Spanish, music, arts, crafts, Suzuki strings, science, and engineering. A full range of courses is also available to high school students, including advanced placement curriculum and International Baccalaureate Programme.

Business partnerships, job placement, enrichment classes, and assistance to non-English-speaking students are areas of emphasis throughout our K-12 program, as well as our continuing adult education program. The School District's division of continuing education consists of an adult education and recreation/enrichment department directed at meeting the comprehensive needs of the community. Some programs and services offered include the following: basic skills (reading/math) improvement, E.L.L. (English language learners) classes, GED testing/preparation, academic/education advising, sports leagues/tournaments (youth and adult), leisure/hobby programs, informational seminars/classes, swimming (instructional and recreational), trips and tours/special events, summer and winter day camps, youth sports camps, School District facility use, and senior citizen resource referral. These community programs and services start with preschool-age children and continue to senior citizen participation with over 20,000 registrations processed each year.

The School District's educational program is built upon a foundation of sound practices designed to promote continuous improvement. The core curriculum of Walled Lake Consolidated School District provides learning experiences in all areas of language arts (reading, writing, speaking, listening, and literature), mathematics, social studies, science, health, physical education, art, vocal and instrumental music, computer instruction (including preparation for Novel and Cisco certification at the high school level), technology education, family life education, business, and world language instruction. The goal of education is to provide all learners with a solid foundation of skills and knowledge, which is necessary for continued growth and success as students within the school setting and as adults in society. As a result of a sound K-12 education based on well-defined benchmarks and related assessments, a Walled Lake Consolidated School District graduate will be "...a caring, knowledgeable, responsible citizen" as defined in the School District's mission statement. Walled Lake Consolidated School District's parents value and support education. Walled Lake Consolidated School District enjoys the active support and participation of parents in PTA groups, booster clubs, and building- and district-level committees. Parent attendance at parent/teacher conferences is high, as is the level of parent volunteerism for activities and programs. The high level of parent involvement contributes greatly to the overall quality of the School District's programs.

Accomplishments

Initiatives

In November 2013, the Walled Lake Consolidated School District community approved a \$67.5 million Safety, Security, and Technology Bond. The sale of the bond took place in January 2014 and project plans began. Projects are nearly complete and have included:

- Comprehensive video surveillance systems
- Entrance and office modifications in all School District school buildings
- Keyless entry throughout the School District
- Upgraded fire alarms and mass notification systems
- Emergency backup generators and emergency lighting upgrades
- Emergency responder signage
- Replacement of the School District's phone system and master clock systems
- Essential technology upgrades in all of the schools and classrooms
- Buses
- Other much-needed specific repair and renovation projects

This bond has enabled the School District to significantly enhance the safety and security of every building and ensure that every classroom is well equipped technologically.

BOARD GOALS

The Board of Education has adopted the following goals:

Student Success: Ensure that every student is able to reach his/her potential by focusing on:

- ✓ Academic and personal success
- ✓ Ensuring instructional strategies and practices are research-based and meet the needs of all learners
- ✓ Collaboration and innovation among all members of our school community
- ✓ The needs of all learners, and developing action plans to help support those needs
- ✓ Using data as a means to help drive instruction and planning
- ✓ Supporting best practices, proven interventions, and the professional development of our teachers and administrators

Fiscal Responsibility: Ensure long-term fiscal health of the School District while maximizing dollars available for the classroom and encouraging innovation and the implementation of proven strategies and programs by:

- ✓ Developing budgets that are focused and centered on student achievement goals
- ✓ Continuing efficiency and collaboration efforts

Community Outreach: In partnership with parents and the community, students and staff continually demonstrate they are caring, responsible, and knowledgeable citizens by:

- ✓ Including the community in school and School District events, activities, and efforts
- ✓ Involving parents and the community in decisions that affect and benefit the Walled Lake Consolidated School District
- ✓ Communicating information to the community to build awareness of Walled Lake Consolidated School District
- ✓ Providing opportunities for our community to be involved in the School District
- ✓ Building partnerships with diverse organizations to mutually strengthen the School District and the communities we serve

Positive District Culture: Ensure that students are able to thrive in a culture that is safe and positive for them, for staff, for parents, and for our community by:

- ✓ Creating a culture of safety and social well-being
- ✓ Promoting “no tolerance” standards for bullying, harassment, and other unacceptable behaviors
- ✓ Ensuring that schools and facilities are maintained to the highest degree
- ✓ Expecting students, staff, and the entire school community to demonstrate respect for one another
- ✓ Expecting students, staff, and the entire school community to communicate, model, and reinforce standards of ethical conduct and responsible global citizenship
- ✓ Continuing to ensure our schools are safe learning environments by annually reviewing Safety Plans, collaborating with local law enforcement officials, and cultivating an overall culture of “safety first”

Professional Development

The ongoing educational needs of the staff of the Walled Lake Consolidated School District are an important focus throughout the School District. Most of these needs are addressed now in a “job-embedded” fashion in which workshops, seminars, and training sessions include topics of immediate interest to teachers, administrators, and support staff.

Such sessions are conducted throughout the year and most often provide participants multiple opportunities to return to important topics to build their skills over time. Topics include Business and Human Resource office initiatives and current technology topics, as well as safety issues, cultural awareness, and numerous instructional ideas.

Professional development in the School District may be organized by teacher leaders, by administrators, by members of the curriculum department, or by colleagues within departments for whom the activities are designed. Topics are current and relevant to procedures and practices and are scheduled with an eye to “on-time delivery.” Planning is collaborative between planners and participants. Responsibilities for content, format, and schedules are now widely assumed by many staff members.

The purpose of all professional development, however, remains constant:

- To support teachers and administrators in the implementation of the School District’s curricular and assessment programs
- To support the analysis of student achievement data
- To promote excellent instruction in every classroom
- To ensure that all employees are sufficiently literate in technology
- To provide specialized training for employees, especially in areas such as special education assignments, transportation, food service, etc.

Economic Outlook

Since the passage of Proposal A in 1994, it has become apparent that School District revenue will not keep pace with inflation, nor with School District expenditures as we know them. Proposal A substantially shifted funding responsibility from the local level to the state level and from property taxes as the major revenue source. Now, the School District is dependent upon the state legislature for not only the majority of its funds, but also its funding level.

It has been imperative over the last several years that the School District prioritize and limit expenditures. In addition to restructuring many of our departments, privatizing our custodial and transportation departments, making cuts in all possible areas, and using a large portion of the School District’s fund balance, the School District has had to make significant reductions in staff. All employee groups have also agreed to significant wage and benefit concessions over several years.

As we look to the future, an additional challenge to be faced is the projected enrollment declines. In an effort to proactively address projections, two elementary buildings were closed and the land sold during the last couple of years. The attraction and retention of students was a primary goal for all district staff during 2016-2017 and will continue to be a focus.

Financial Information - Accounting Controls

Management is responsible for establishing and maintaining an internal control structure. This structure is designed to ensure that the assets of the School District are protected from loss, theft, or misuse and that adequate accounting data is compiled to allow for the preparation of financial statements in conformity with accounting principles generally accepted in the United States of America. The internal control structure is designed to provide reasonable, but not absolute, assurance that these objectives are met. The concept of reasonable assurance recognizes that (1) the cost of a control should not exceed the benefits likely to be derived and (2) the valuation of costs and benefits requires estimates and judgments by management.

Budgetary Controls

The School District maintains budgetary controls to ensure that budgets are in compliance with legal provisions of the State of Michigan Uniform Budgeting and Accounting Act and with the annual appropriation budget adopted by the Board of Education. Formal budgetary integration is employed as a management control device throughout the year for the General Fund, special revenue funds, debt service funds, and capital projects funds. Under the guidelines of the State of Michigan's School Accounting Manual (Bulletin 1022), detailed line-item budget information is provided and appropriate administrators are delegated the responsibility for monitoring and controlling their respective budget allocations. The controls are integrated into the School District's computerized accounting system, which prohibits expenditures exceeding appropriations. An encumbrance system is utilized to measure the uncommitted budget amount available at any given point in time during the year. The budget is amended at least twice during the year to appropriately address variances that occur in enrollment, revenue, and expenditures.

Management believes that the existing system of budgetary and accounting controls provides a reasonable level of assurance that errors or irregularities that could be material to the financial statements are prevented or that they would be detected within a timely manner. As demonstrated by the statements and schedules included in the financial section of this report, the School District continues to meet its responsibility for sound financial management.

Financial Condition at June 30, 2017

Please refer to the management's discussion and analysis section for a summary of the financial condition of the School District at June 30, 2017.

Capital Projects Funding

The capital projects funds are used to account for the financial resources to be used for the acquisition, construction, or major renovation of facilities. These funds are financed by bond issues or the support of the General Fund. Two funds are currently active, the 2014 Bond Fund and the Sinking Fund.

Federal Funding

As a recipient of federal, state, and county financial assistance, the School District is responsible for ensuring that an adequate internal and administrative control structure is in place to document compliance with applicable laws and regulations related to those programs. Tests are made by the School District's auditors to determine the adequacy of the internal and administrative control structure.

Independent Audit

The State of Michigan statutes require an annual audit by independent certified public accountants. The accounting firm of Plante & Moran, PLLC was appointed by the Walled Lake Consolidated School District Board of Education to perform this service for the 2016-2017 fiscal year. In addition, the Title 2 U.S. Code of Federal Regulations Part 200, *Uniform Administrative Requirements, Cost Principles, and Audit Requirements for Federal Awards* (the "Uniform Guidance"), requires governmental recipients of federal assistance to have organization-wide financial and compliance audits on an annual basis. Both of these requirements have been met, and the auditor's report on the basic financial statements is included herein.

Fund Balance Policy

Annually, the superintendent recommends, and the board approves, as part of the budget process, a desired fund equity level.

Fund equity may be used to supplement possible shortfalls in state, federal, and local revenues, used as a reserve for possible emergency expenditures or for other reasons deemed necessary by the board. Emergency expenditures may not be taken from the fund equity unless possible surpluses in the existing school budget have been appraised. Emergency expenditures may be recommended by the superintendent and approved by the board. Fund equity funds may not be transferred to expenditure accounts without board approval.

Other Information

Enrollment

Five-year projections of enrollment are done annually using data from the county, city, and School District. Such information as live births, building permits, cohort survival ratios, and workforce/economic statistics are used in the enrollment projections. Historically, this method has proven to be accurate, within a reasonable variance, for our planning purposes. 2007/2008 represented the first time since 1986 where enrollment declined in the School District. Enrollment has declined each year for the last five years. Current enrollment is 14,246 students, and enrollment is projected to decline by 229 students to 14,017 for 2017/2018. Enrollment just five years ago was 15,266.

The extended recession certainly had an impact on Michigan residents. Job losses caused many families to leave Michigan. In addition, our incoming kindergarten classes are smaller than our graduating seniors. These two factors, supported by enrollment studies performed, lead us to believe that the School District will continue to experience declining enrollment for the next several years.

Certificate of Excellence

This report has been prepared following the guidelines recommended by the Association of School Business Officials International (ASBO). The ASBO awarded a certificate of excellence in financial reporting to the Walled Lake Consolidated School District for its Comprehensive Annual Financial Report for each of the fiscal years ended June 30, 1994 through June 30, 2016. In order to be awarded a certificate of excellence, the School District must publish an easily readable and efficiently organized Comprehensive Annual Financial Report. This report must satisfy both accounting principles generally accepted in the United States of America and applicable legal requirements.

A certificate of excellence is valid for a period of one year only. We believe that our current Comprehensive Annual Financial Report continues to meet the certificate of excellence program's requirements, and we are submitting it to ASBO to determine its eligibility for another certificate.

Meritorious Budget Award

The ASBO has awarded a meritorious budget award to Walled Lake Consolidated School District for its budget documents created for each of the fiscal years ended June 30, 2005 through June 30, 2017. We have submitted our budget document for June 30, 2018 and anticipate receiving the certificate. The program was designed to encourage school districts to achieve a very high standard of excellence in budget presentation. In order to be awarded the meritorious budget award, a school district must meet minimum presentation standards for a school system's annual budget document.

Acknowledgments

The preparation of this report was accomplished through the commitment and dedication of the entire business office staff. We would also like to express our appreciation to other departmental individuals who assisted in the preparation of this report.

The School District is highly committed to a program of excellence. A highly dedicated Board of Education has adopted sound policies that facilitate the continued growth and improvement of the total school program. In addition, there is a wide, all-encompassing array of support provided by parents, students, employees, citizens, civic organizations, and hundreds of volunteers that enables the School District to achieve high goals.

Sincerely,



Teri L. Les
Assistant Superintendent of Business Services



Kenneth Gutman
Superintendent of Schools
Board of Education

Walled Lake Consolidated School District

District Officials

Administration

Kenneth Gutman

Superintendent of Schools

Christopher J. Delgado

Deputy Superintendent of Schools

Teri L. Les

Assistant Supt. of Business Services

Margaret Hazlett

Assist. Supt. of Human Resources

Mark A. Hess

Exec. Dir. of Instruction, Technology
and Assessment

William Chatfield

Director of Operations

Judy Evola

Director of Community Relations and Marketing

Board of Education

Christopher Titus

President

Kathy Lyall

Vice President

Greg Janicki

Secretary

Nancy van Leuwen

Treasurer

Peggy Casagrande

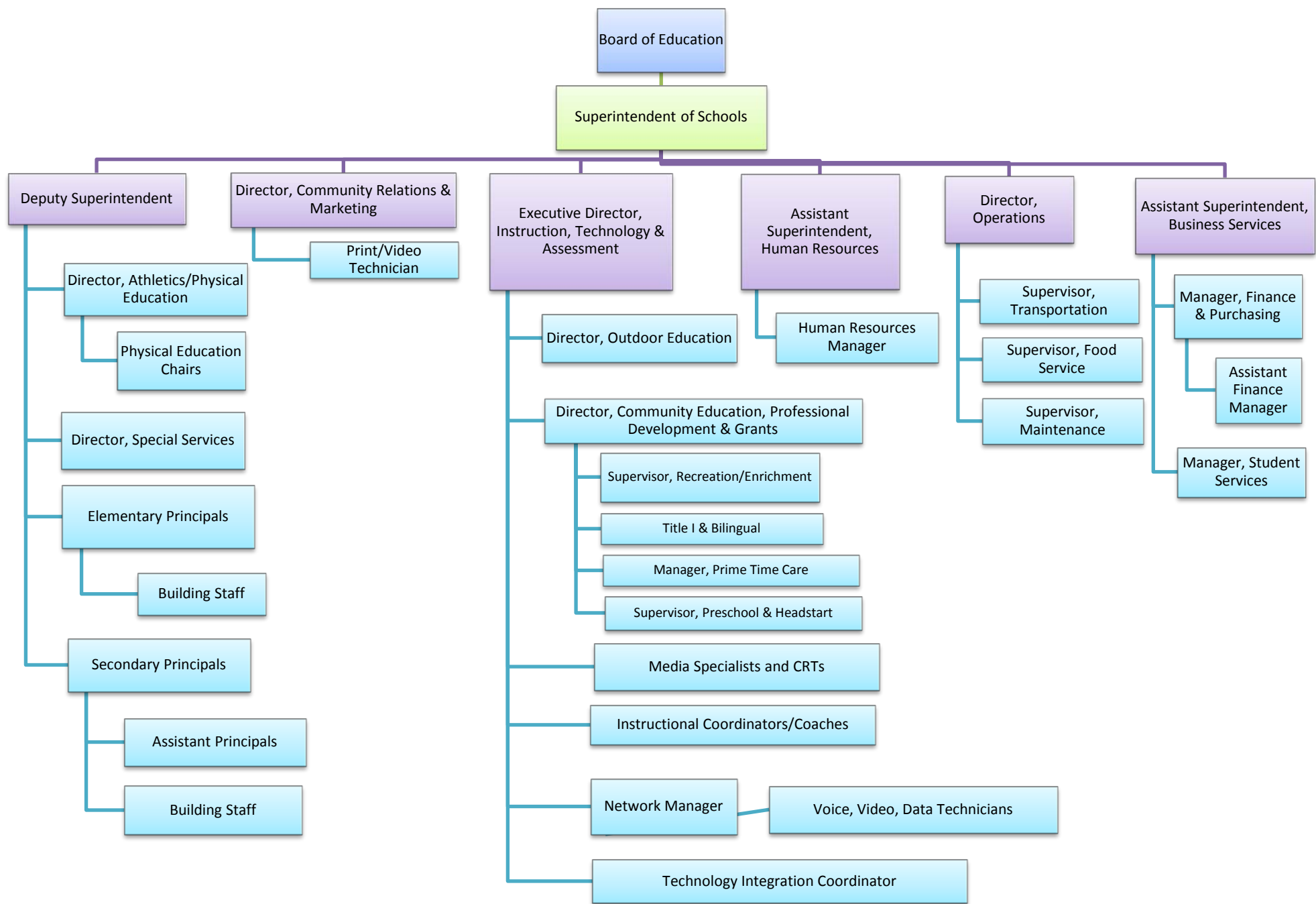
Trustee

Marc Siegler

Trustee

Denise Dunn

Trustee





**ASSOCIATION OF
SCHOOL BUSINESS OFFICIALS
INTERNATIONAL**

**The Certificate of Excellence in Financial Reporting
is presented to**

Walled Lake Consolidated School District

**for its Comprehensive Annual Financial Report (CAFR)
for the Fiscal Year Ended June 30, 2016.**

The CAFR has been reviewed and met or exceeded
ASBO International's Certificate of Excellence standards.



Anthony N. Dragona, Ed.D., RSBA
President

John D. Musso, CAE
Executive Director

Independent Auditor's Report

To the Board of Education
Walled Lake Consolidated School District

Report on the Financial Statements

We have audited the accompanying financial statements of the governmental activities, each major fund, and the aggregate remaining information of Walled Lake Consolidated School District as of and for the year ended June 30, 2017 and the related notes to the financial statements, which collectively comprise Walled Lake Consolidated School District's basic financial statements as listed in the table of contents.

Management's Responsibility for the Financial Statements

Management is responsible for the preparation and fair presentation of these financial statements in accordance with accounting principles generally accepted in the United States of America; this includes the design, implementation, and maintenance of internal control relevant to the preparation and fair presentation of financial statements that are free from material misstatement, whether due to fraud or error.

Auditor's Responsibility

Our responsibility is to express opinions on these financial statements based on our audit. We conducted our audit in accordance with auditing standards generally accepted in the United States of America and the standards applicable to financial audits contained in *Government Auditing Standards*, issued by the Comptroller General of the United States. Those standards require that we plan and perform the audit to obtain reasonable assurance about whether the financial statements are free from material misstatement.

An audit involves performing procedures to obtain audit evidence about the amounts and disclosures in the financial statements. The procedures selected depend on the auditor's judgment, including the assessment of the risks of material misstatement of the financial statements, whether due to fraud or error. In making those risk assessments, the auditor considers internal control relevant to the entity's preparation and fair presentation of the financial statements in order to design audit procedures that are appropriate in the circumstances, but not for the purpose of expressing an opinion on the effectiveness of the entity's internal control. Accordingly, we express no such opinion. An audit also includes evaluating the appropriateness of accounting policies used and the reasonableness of significant accounting estimates made by management, as well as evaluating the overall presentation of the financial statements.

We believe that the audit evidence we have obtained is sufficient and appropriate to provide a basis for our audit opinion.

Opinion

In our opinion, the financial statements referred to above present fairly, in all material respects, the respective financial position of the governmental activities, each major fund, and the aggregate remaining information of Walled Lake Consolidated School District as of June 30, 2017 and the respective changes in its financial position for the year then ended in accordance with accounting principles generally accepted in the United States of America.

To the Board of Education
Walled Lake Consolidated School District

Required Supplemental Information

Accounting principles generally accepted in the United States of America require that the management's discussion and analysis, pension system schedules of funding progress and employer contributions, and the major fund budgetary comparison schedule, as listed in the table of contents, be presented to supplement the basic financial statements. Such information, although not a part of the basic financial statements, is required by the Governmental Accounting Standards Board, which considers it to be an essential part of financial reporting for placing the basic financial statements in an appropriate operational, economic, or historical context. We have applied certain limited procedures to the required supplemental information in accordance with auditing standards generally accepted in the United States of America, which consisted of inquiries of management about the methods of preparing the information and comparing the information for consistency with management's responses to our inquiries, the basic financial statements, and other knowledge we obtained during our audit of the basic financial statements. We do not express an opinion or provide any assurance on the information because the limited procedures do not provide us with sufficient evidence to express an opinion or provide any assurance.

Other Information

Our audit was conducted for the purpose of forming opinions on the financial statements that collectively comprise Walled Lake Consolidated School District's basic financial statements. The other supplemental information, as identified in the table of contents, and introductory section and statistical section schedules are presented for the purpose of additional analysis and are not a required part of the basic financial statements.

The other supplemental information, as identified in the table of contents, is the responsibility of management and was derived from and relates directly to the underlying accounting and other records used to prepare the basic financial statements. Such information has been subjected to the auditing procedures applied in the audit of the basic financial statements and certain additional procedures, including comparing and reconciling such information directly to the underlying accounting and other records used to prepare the basic financial statements or to the basic financial statements themselves, and other additional procedures in accordance with auditing standards generally accepted in the United States of America. In our opinion, the other supplemental information, as identified in the table of contents, is fairly stated in all material respects in relation to the basic financial statements as a whole.

The introductory section and statistical section schedules have not been subjected to the auditing procedures applied in the audit of the basic financial statements, and accordingly, we do not express an opinion or provide any assurance on them.

Other Reporting Required by Government Auditing Standards

In accordance with *Government Auditing Standards*, we have also issued our report dated September 25, 2017 on our consideration of Walled Lake Consolidated School District's internal control over financial reporting and on our tests of its compliance with certain provisions of laws, regulations, contracts, grant agreements, and other matters. The purpose of that report is to describe the scope of our testing of internal control over financial reporting and compliance and the results of that testing, and not to provide an opinion on the internal control over financial reporting or on compliance. That report is an integral part of an audit performed in accordance with *Government Auditing Standards* in considering Walled Lake Consolidated School District's internal control over financial reporting and compliance.

Plante & Moran, PLLC

September 25, 2017

Walled Lake Consolidated School District

Management's Discussion and Analysis

This section of Walled Lake Consolidated School District's (the "School District") annual financial report presents our discussion and analysis of the School District's financial performance during the years ended June 30, 2017 and 2016. Please read it in conjunction with the School District's financial statements, which immediately follow this section.

Using this Annual Report

This annual report consists of a series of financial statements and notes to those statements. These statements are organized so the reader can understand Walled Lake Consolidated School District financially as a whole. The government-wide financial statements provide information about the activities of the whole School District, presenting both an aggregate view of the School District's finances and a longer-term view of those finances. The fund financial statements provide the next level of detail. For governmental activities, these statements tell how services were financed in the short term as well as what remains for future spending. The fund financial statements look at the School District's operations in more detail than the government-wide financial statements by providing information about the School District's most significant funds - the General Fund and the 2014 Bond Issue Fund, with all other funds presented in one column as nonmajor funds. The remaining statement, the statement of fiduciary assets and liabilities, presents financial information about activities for which the School District acts solely as an agent for the benefit of students and parents. The annual report is arranged as follows:

Management's Discussion and Analysis (MD&A)
(Required Supplemental Information)

Basic Financial Statements

Government-wide Financial Statements Fund Financial Statements

Notes to the Basic Financial Statements

Budgetary Information for General Fund
Pension System Schedules
(Required Supplemental Information)

Other Supplemental Information

Statistical Section

Walled Lake Consolidated School District

Management's Discussion and Analysis (Continued)

Reporting the School District as a Whole - Government-wide Financial Statements

The statement of net position and the statement of activities, which appear first in the School District's financial statements, report information about the School District as a whole using the accrual basis of accounting, which is similar to the accounting used by most private sector companies. The statement of net position includes all of the School District's assets and liabilities. All of the current year's revenue and expenses are accounted for in the statement of activities, regardless of when cash is received or paid.

These two statements report the School District's net position and how it has changed. Net position, the difference between assets and deferred outflows, and liabilities and deferred inflows, as reported in the statement of net position, is one way to measure the School District's financial health or position. Over time, increases or decreases in the School District's net position, as reported in the statement of activities, are indicators of whether its financial health is improving or deteriorating. The relationship between revenue and expenses is the School District's operating results. However, the School District's goal is to provide services to our students, not to generate profits as commercial entities do. One must consider many other nonfinancial factors, such as the quality of the education provided and the safety of the schools, to assess the overall health of the School District.

The statement of net position and the statement of activities report the governmental activities for the School District, which encompass all of the School District's services, including instruction, support services, community services, athletics, and cafeteria. Property taxes, unrestricted state aid (foundation allowance revenue), and state and federal grants finance most of these activities.

Reporting the School District's Most Significant Funds - Fund Financial Statements

The School District's fund financial statements provide detailed information about the most significant fund, the General Fund, not the School District as a whole. Some funds are required to be established by state law and by bond covenants. However, the School District establishes many other funds to help it control and manage money for particular purposes (the Cafeteria and Enrichment/Prime Time Care Funds are examples) or to show that it is meeting legal responsibilities for using certain taxes, grants, and other money (such as bond-funded construction funds used for voter-approved capital projects). The governmental funds of the School District use the following accounting approach:

Walled Lake Consolidated School District

Management's Discussion and Analysis (Continued)

Governmental Funds - All of the School District's services are reported in governmental funds. Governmental fund reporting focuses on showing how money flows into and out of funds and the balances left at year end that are available for spending. They are reported using an accounting method called modified accrual accounting, which measures cash and all other financial assets that can readily be converted to cash. The governmental fund statements provide a detailed short-term view of the operations of the School District and the services it provides. Governmental fund information helps you determine whether there are more or fewer financial resources that can be spent in the near future to finance the School District's programs. We describe the relationship (or differences) between governmental activities (reported in the statement of net position and the statement of activities) and governmental funds in a reconciliation.

The School District as Trustee - Reporting the School District's Fiduciary Responsibilities

The School District is the trustee, or fiduciary, for its student activity funds. All of the School District's fiduciary activities are reported in a separate statement of fiduciary assets and liabilities. We exclude these activities from the School District's other financial statements because the School District cannot use these assets to finance its operations. The School District is responsible for ensuring that the assets reported in this fund are used for their intended purposes.

Walled Lake Consolidated School District

Management's Discussion and Analysis (Continued)

The School District as a Whole

Recall that the statement of net position provides the perspective of the School District as a whole. Table I provides a summary of the School District's net position as of June 30, 2017 and 2016:

TABLE I

	Governmental Activities	
	June 30	
	2017	2016
	(in millions)	
Assets		
Current and other assets	\$ 48.2	\$ 61.9
Property and equipment	249.7	246.0
Total assets	297.9	307.9
Deferred Outflows of Resources		
Deferred charges on bond refunding	1.6	2.1
Deferred outflows related to pensions	30.1	25.8
Total deferred outflows of resources	31.7	27.9
Total assets and deferred outflows of resources	329.6	335.8
Liabilities		
Current liabilities	23.9	44.8
Long-term liabilities	137.1	135.3
Net pension liability	248.1	245.3
Total liabilities	409.1	425.4
Deferred Inflows of Resources	13.8	12.4
Total liabilities and deferred inflows of resources	422.9	437.8
Net Position		
Net investment in capital assets	126.9	120.0
Restricted	2.8	3.6
Unrestricted deficit	(223.0)	(225.6)
Total net position	<u>\$ (93.3)</u>	<u>\$ (102.0)</u>

The above analysis focuses on the net position (see Table I). The change in net position (see Table 2) of the School District's governmental activities is discussed below. The School District's net deficit was (\$93.3) million at June 30, 2017. Net investment in capital assets, totaling \$126.9 million, compares the original cost less depreciation of the School District's capital assets to long-term debt used to finance the acquisition of those assets. Most of the debt will be repaid from voter-approved property taxes collected as the debt service comes due. Restricted net position amounts are reported separately to show legal constraints from enabling legislation that limit the School District's ability to use net position for day-to-day operations. The remaining amount of net deficit (\$223.0 million) was unrestricted.

Walled Lake Consolidated School District

Management's Discussion and Analysis (Continued)

The results of this year's operations for the School District as a whole are reported in the statement of activities, which shows the changes in net position for fiscal years June 30, 2017 and 2016 (see Table 2).

TABLE 2

Governmental Activities	
Year Ended June 30	
2017	2016
(in millions)	

Revenue

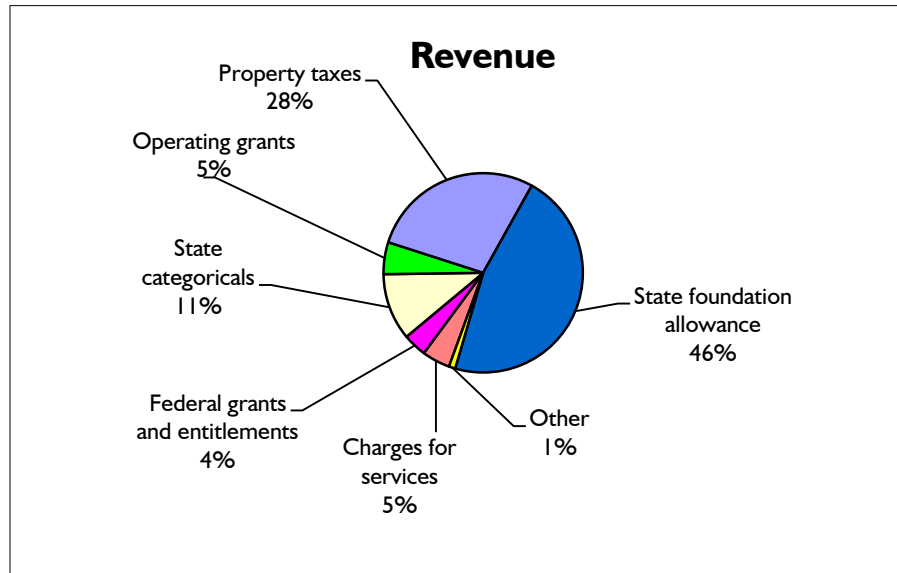
Program revenue:

Charges for services	\$ 8.5	\$ 8.4
Federal grants and entitlements	7.1	7.0
State categoricals	20.2	12.9
Operating grants	9.6	9.8

General revenue:

Property taxes	52.4	52.5
State foundation allowance	86.4	87.5
Other	1.9	3.9

Total revenue	186.1	182.0
---------------	-------	-------

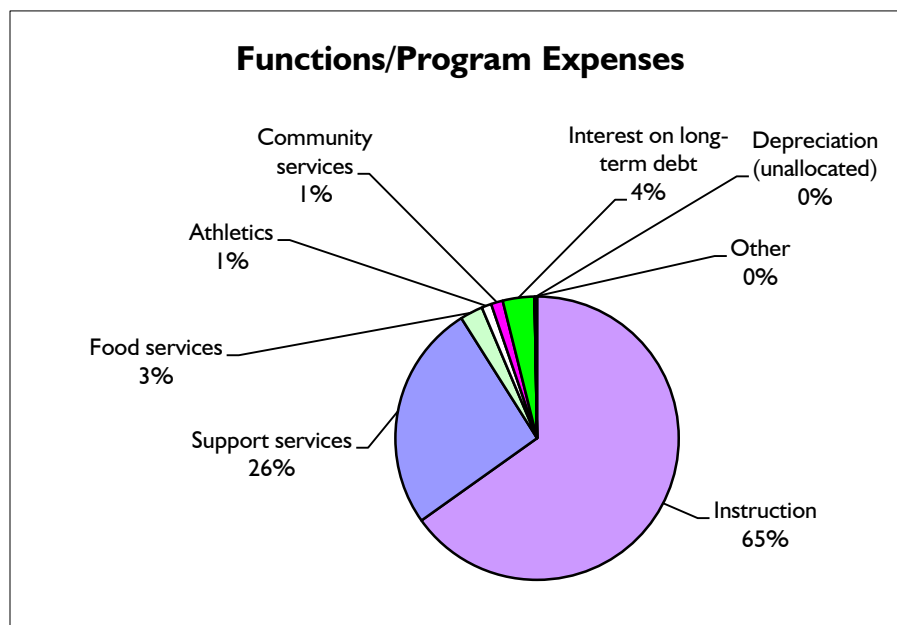


Walled Lake Consolidated School District

Management's Discussion and Analysis (Continued)

TABLE 2 (Continued)

	Governmental Activities	
	Year Ended June 30	
	2017	2016
	(in millions)	
Functions/Program Expenses		
Instruction	\$ 115.6	\$ 107.6
Support services	45.9	51.7
Cafeteria	4.6	4.4
Athletics	2.0	2.0
Community services	2.4	2.3
Interest on long-term debt and bond issue costs	6.4	7.2
Debt issuance costs	-	0.2
Depreciation (unallocated)	0.5	0.4
Total functions/program expenses	177.4	175.8
Increase in Net Position	8.7	6.2
Net Position - Beginning of year	(102.0)	(108.2)
Net Position - End of year	<u>\$ (93.3)</u>	<u>\$ (102.0)</u>



Walled Lake Consolidated School District

Management's Discussion and Analysis (Continued)

As reported in the statement of activities, the cost of all of our governmental activities this year was \$177.4 million. Certain activities were partially funded from those who benefited from the programs (\$8.5 million) or by other governments and organizations that subsidized certain programs with grants and contributions (\$36.9 million). We paid for the remaining "public benefit" portion of our governmental activities with \$52.4 million in taxes, \$86.4 million in state foundation allowance, and with our other revenue (i.e., interest and other general revenue).

As discussed above, the net cost shows the financial burden that was placed on the State and the School District's taxpayers by each of these functions. Since property taxes for operations and unrestricted state aid constitute the vast majority of School District operating revenue sources, the Board of Education and administration must annually evaluate the needs of the School District and balance those needs with state-prescribed available unrestricted resources.

The School District's Funds

As we noted earlier, the School District uses funds to help it control and manage money for particular purposes. Looking at funds helps the reader consider whether the School District is being accountable for the resources taxpayers and others provide and may provide more insight into the School District's overall financial health.

As the School District completed this year, the General Fund reported a fund balance of \$11.6 million, which is an increase of approximately \$1.9 million from last year. The School District budgeted an increase of approximately \$440,000.

The General Fund fund balance is available to fund costs related to allowable school operating purposes.

In 2014, the School District issued \$65.8 million in voter-approved bonds. These bonds were issued in accordance with state law and will be used for security enhancements to school buildings and other facilities, to upgrade technology infrastructure throughout the School District, and to purchase school buses. The 2014 Bond Issue Fund has a fund balance of \$7.8 million at June 30, 2017.

The other nonmajor government funds have a combined fund balance of \$5.3 million, which represents a decrease of approximately \$838,000. The decrease is primarily related to the debt service funds and Sinking Fund.

Walled Lake Consolidated School District

Management's Discussion and Analysis (Continued)

Budgetary Highlights

Over the course of the year, the School District revises its budget to reflect changes in revenue and expenditures. State law requires that the budget be amended to ensure that expenditures do not exceed appropriations. The final amendment to the budget was adopted in early June. A schedule showing the School District's original and final budget amounts compared with amounts actually paid and received is provided in the required supplemental information of these financial statements. There were no significant amendments to the 2016-2017 General Fund budget during the year. Additionally, there were no significant variances between the final budget and actual amounts.

There were no significant budget amendments to the special revenue funds or the debt service funds during the year.

The capital projects funds budget was adjusted to account for the costs of bond funded projects.

Capital Assets and Debt Administration

Capital Assets

At June 30, 2017 and 2016, the School District had \$249.7 million and \$246.0 million, respectively, invested in a broad range of capital assets, including land, buildings, and furniture and equipment. This amount represents a net increase (including additions, deductions, and depreciation) of approximately \$3.7 million from last year.

	2017	2016
Assets not being depreciated - Land	\$ 12,729,972	\$ 12,729,972
Assets not being depreciated - Construction in progress	3,963,184	12,918,602
Building and building improvements	330,831,829	317,122,356
Furniture and equipment	35,855,643	28,340,324
Buses and other vehicles	9,392,694	8,776,074
Total capital assets	392,773,322	379,887,328
Less accumulated depreciation	143,032,971	133,837,593
Net capital assets	<u>\$ 249,740,351</u>	<u>\$ 246,049,735</u>

Walled Lake Consolidated School District

Management's Discussion and Analysis (Continued)

This year's additions (net of adjustments between classifications) of \$13.8 million included equipment, security enhancements to school buildings, technology infrastructure upgrades, buses, and building and site improvements completed during the 2017 fiscal year, as well as site improvements that began during the 2017 fiscal year. The School District passed a 0.50 mill Building and Site Improvement Fund, or Sinking Fund, during 2004. In November 2012, the community passed a 10-year renewal of the Sinking Fund. These funds have allowed the School District to proceed with several projects and capital additions. In 2014, the School District issued \$65.8 million in voter-approved bonds. Several major capital projects are planned for the 2017-2018 fiscal year with the use of these funds.

We present more detailed information about our capital assets in the notes to the financial statements.

Debt

At the end of this year, the School District had \$125.8 million in General Obligation Bonds outstanding versus \$139.5 million last year - a decrease of 10.0 percent.

The School District's general obligation bond rating is "AA-" from Standard & Poor's and "Aa2" from Moody's Investors Service. The State limits the amount of general obligation debt that schools can issue to 15 percent of the assessed value of all taxable property within the School District's boundaries. If the School District issues "qualified debt," that is, debt backed by the State of Michigan, such obligations are not subject to this debt limit. The School District does not have any outstanding unqualified general obligation debt.

Other obligations include debt premiums, compensated absences, and other amounts. We present more detailed information about our long-term liabilities in the notes to the financial statements.

Economic Factors and Next Year's Budgets and Rates

Our elected officials and administration consider many factors when setting the School District's 2018 fiscal year budget. One of the most important factors affecting the budget is our student count. The state foundation revenue is determined by multiplying the blended student count by the foundation allowance per pupil. The blended count for the 2018 fiscal year will be calculated using 90 percent of the October 2017 count and 10 percent of the February 2017 count. The 2018 budget was adopted in June 2017, based on an estimate of students that will be enrolled in September 2017. Approximately 80 percent of total General Fund revenue is from the foundation allowance. Under state law, the School District cannot assess additional property tax revenue for general operations. As a result, School District funding is heavily dependent on the State's ability to fund local school operations. Once the final student count and related per pupil funding are validated, state law requires the School District to amend the budget if actual School District resources are not sufficient to fund original appropriations.

Walled Lake Consolidated School District

Management's Discussion and Analysis (Continued)

Since the School District's revenue is heavily dependent on state funding and the health of the State's School Aid Fund, the actual revenue received depends on the State's ability to collect revenue to fund its appropriation to school districts. The School Aid Act for the 2017-2018 school year included a \$60 per-pupil increase for all school districts and up to an additional \$60 (\$120 in total) for the lowest funded school districts. The total foundation grant for Walled Lake Consolidated Schools will be \$8,435 for 2017-2018. This includes \$51 that is provided under a special allocation which has been provided to a few districts who under current law would not have been eligible for per-pupil increases enjoyed by most districts across the state. It is not technically part of the foundation grant. Additional funding will continue to assist districts with increasing retirement costs.

Also included in the state budget for 2017-2018 are two items that will impact Walled Lake Schools. The first is a change in the eligibility requirements for At-Risk Funding which will make our School District eligible for the first time. Newly eligible districts will receive 30 percent of the standard allocation. This will result in approximately \$233 per eligible pupil. These funds will assist us with addressing the many needs of this population.

The second item is a new allocation of \$25 for every high school student enrolled. The State is providing this funding in recognition that the cost to educate at the high school level is higher.

We are currently projecting fund balance to be approximately \$8.7 million at the end of 2017-2018. The superintendent annually recommends, and the Board of Education approves, a target minimum fund balance level. Administration will need to continue to monitor funding and reduce expenditures as necessary to maintain this approved level, which is currently \$8.5 million.

Contacting the School District's Financial Management

This financial report is designed to provide the School District's citizens, taxpayers, customers, investors, and creditors with a general overview of the School District's finances and to demonstrate the School District's accountability for the money it receives. If you have questions about this report or need additional financial information, contact the business department at 850 Ladd Road, Building D, Walled Lake, Michigan 48390.

Walled Lake Consolidated School District

Statement of Net Position June 30, 2017

	Governmental Activities
Assets	
Cash and investments (Note 3)	\$ 13,464,773
Receivables:	
Accounts receivable	55,180
Due from other governmental units (Note 6)	21,290,676
Inventories	76,732
Prepaid costs	800,278
Restricted assets (Notes 3 and 9)	12,417,927
Capital assets not being depreciated (Note 4)	16,693,156
Capital assets - Less accumulated depreciation of \$143,032,971 (Note 4)	233,047,195
Total assets	297,845,917
Deferred Outflows of Resources	
Deferred charges on bond refunding (Note 8)	1,634,597
Deferred outflows related to pensions (Note 11)	30,095,697
Total deferred outflows of resources	31,730,294
Total assets and deferred outflows of resources	329,576,211
Liabilities	
Accounts payable	2,236,707
Accrued payroll-related liabilities	19,930,370
Other accrued liabilities	987,249
Unearned revenue (Note 7)	792,632
Noncurrent liabilities (Note 8):	
Due within one year	17,299,492
Due in more than one year	119,836,775
Net pension liability (Note 11)	248,061,578
Total liabilities	409,144,803
Deferred Inflows of Resources (Note 11)	13,768,916
Total liabilities and deferred inflows of resources	422,913,719
Net Position	
Net investment in capital assets	126,880,952
Restricted:	
Debt service	963,972
Capital projects	1,838,781
Unrestricted	(223,021,213)
Total net position	\$ (93,337,508)

Walled Lake Consolidated School District

Statement of Activities Year Ended June 30, 2017

		Program Revenue		Net (Expense) Revenue and Changes in Net Position
	Expenses	Charges for Services	Operating Grants and Contributions	Governmental Activities
Functions/Programs				
Primary government - Governmental activities:				
Instruction	\$ 115,616,026	\$ 1,157,423	\$ 33,332,813	\$ (81,125,790)
Support services	45,884,136	-	1,757,743	(44,126,393)
Athletics	2,024,932	1,059,620	-	(965,312)
Food services	4,551,780	2,795,956	1,925,500	169,676
Community services	2,465,524	3,454,063	-	988,539
Interest	6,422,279	-	-	(6,422,279)
Depreciation expense (unallocated), excluding direct depreciation allocated to programs	507,285	-	-	(507,285)
Total primary government	<u><u>\$ 177,471,962</u></u>	<u><u>\$ 8,467,062</u></u>	<u><u>\$ 37,016,056</u></u>	(131,988,844)
General revenue:				
Taxes:				
Property taxes, levied for general purposes				30,312,431
Property taxes, levied for debt service				19,903,925
Property taxes, levied for sinking fund				2,180,456
State aid not restricted to specific purposes				86,388,154
Interest and investment earnings				1,011,197
Gain on the sale of capital assets				29,770
Other				832,695
Total general revenue				<u>140,658,628</u>
Change in Net Position				8,669,784
Net Position - Beginning of year				<u>(102,007,292)</u>
Net Position - End of year				\$ (93,337,508)

Walled Lake Consolidated School District

Governmental Funds Balance Sheet June 30, 2017

	General Fund	2014 Bond Issue	Nonmajor Governmental Funds	Total
Assets				
Cash and investments (Note 3)	\$ 13,174,903	\$ -	\$ 289,870	\$ 13,464,773
Receivables:				
Accounts receivable	535,334	-	-	535,334
Due from other governmental units (Note 6)	20,979,204	-	311,472	21,290,676
Due from other funds (Note 5)	-	-	1,457,633	1,457,633
Inventories	20,294	-	56,438	76,732
Prepaid costs	800,278	-	-	800,278
Restricted assets (Notes 3 and 9)	-	8,368,372	4,049,555	12,417,927
Total assets	\$ 35,510,013	\$ 8,368,372	\$ 6,164,968	\$ 50,043,353
Liabilities, Deferred Inflows of Resources, and Fund Balances				
Liabilities				
Accounts payable	\$ 927,845	\$ 532,847	\$ 776,015	\$ 2,236,707
Accrued payroll and other liabilities	19,930,370	-	-	19,930,370
Due to other funds (Note 5)	1,931,982	1,950	3,855	1,937,787
Unearned revenue (Note 7)	681,391	-	111,241	792,632
Total liabilities	23,471,588	534,797	891,111	24,897,496
Deferred Inflows of Resources -				
Unavailable revenue (Note 7)	431,891	-	-	431,891
Total liabilities and deferred inflows of resources	23,903,479	534,797	891,111	25,329,387
Fund Balances				
Nonspendable:				
Inventories	20,294	-	56,438	76,732
Prepaid costs	800,278	-	-	800,278
Restricted:				
Capital projects	-	7,833,575	1,370,103	9,203,678
Debt service	-	-	1,951,221	1,951,221
Special revenue funds - Cafeteria	-	-	677,918	677,918
Assigned:				
Community Education	-	-	187,557	187,557
Enrichment/Prime Time Care	-	-	775,107	775,107
Preschool	-	-	255,513	255,513
Unassigned - General Fund	10,785,962	-	-	10,785,962
Total fund balances	11,606,534	7,833,575	5,273,857	24,713,966
Total liabilities, deferred inflows of resources, and fund balances	\$ 35,510,013	\$ 8,368,372	\$ 6,164,968	\$ 50,043,353

The Notes to Financial Statements are an
Integral Part of this Statement.

Walled Lake Consolidated School District

Governmental Funds Reconciliation of the Balance Sheet of Governmental Funds to the Statement of Net Position June 30, 2017

Fund Balance Reported in Governmental Funds \$ 24,713,966

Amounts reported for governmental activities in the statement of net position are different because:

Capital assets used in governmental activities are not financial resources and are not reported in the funds:

Cost of capital assets	\$ 392,773,322	
Accumulated depreciation	<u>(143,032,971)</u>	249,740,351

Other long-term assets are not available to pay current period expenditures, therefore they are deferred in the funds	431,891
---	---------

Deferred charges on bond refunding reported as expenditures in the governmental funds are capitalized and amortized in the statement of activities	1,634,597
--	-----------

Deferred outflows for pension contributions made subsequent to the measurement date	30,095,697
---	------------

Long-term liabilities are not due and payable in the current period and are not reported in the governmental funds:

Bonds payable including premium	(131,858,893)	
Compensated absences and longevity	(4,907,374)	
Early retirement incentive	<u>(370,000)</u>	
Total long-term liabilities		(137,136,267)

Accrued interest payable is not included as a liability in governmental activities	(987,249)
--	-----------

Net pension obligations do not present a claim on current financial resources and are not reported as fund liabilities	(248,061,578)
--	---------------

Deferred inflows related to pension investment returns and changes in assumptions and revenue in support of pension contributions subsequent to the measurement date are not reported in the governmental funds	<u>(13,768,916)</u>
---	---------------------

Net Position of Governmental Activities **\$ (93,337,508)**

Walled Lake Consolidated School District

Governmental Funds Statement of Revenue, Expenditures, and Changes in Fund Balances Year Ended June 30, 2017

	General Fund	2014 Bond Issue	Nonmajor Governmental Funds	Total Governmental Funds
Revenue				
Local sources	\$ 33,925,927	\$ 289,432	\$ 27,991,350	\$ 62,206,709
State sources	107,413,170	-	172,566	107,585,736
Federal sources	5,381,881	-	1,752,934	7,134,815
Interdistrict sources	9,509,147	-	-	9,509,147
Total revenue	156,230,125	289,432	29,916,850	186,436,407
Expenditures				
Current:				
Instruction	102,782,125	-	387,785	103,169,910
Support services	49,114,112	-	15,373	49,129,485
Athletics	2,018,161	-	-	2,018,161
Food services	-	-	4,528,504	4,528,504
Community services	214,777	-	2,258,321	2,473,098
Debt service:				
Principal	-	-	13,660,000	13,660,000
Interest	-	-	6,468,944	6,468,944
Other	-	-	44,243	44,243
Capital outlay	576,157	11,244,471	3,091,239	14,911,867
Total expenditures	154,705,332	11,244,471	30,454,409	196,404,212
Excess of Revenue Over (Under) Expenditures	1,524,793	(10,955,039)	(537,559)	(9,967,805)
Other Financing Sources (Uses)				
Proceeds from sale of capital assets	39,695	-	-	39,695
Transfers in (Note 5)	300,000	-	-	300,000
Transfers out (Note 5)	-	-	(300,000)	(300,000)
Total other financing sources (uses)	339,695	-	(300,000)	39,695
Net Change in Fund Balances	1,864,488	(10,955,039)	(837,559)	(9,928,110)
Fund Balances - Beginning of year	9,742,046	18,788,614	6,111,416	34,642,076
Fund Balances - End of year	<u>\$ 11,606,534</u>	<u>\$ 7,833,575</u>	<u>\$ 5,273,857</u>	<u>\$ 24,713,966</u>

Walled Lake Consolidated School District

Governmental Funds **Reconciliation of the Statement of Revenue, Expenditures,** **and Changes in Fund Balances of Governmental Funds** **to the Statement of Activities** **Year Ended June 30, 2017**

Net Change in Fund Balances - Total Governmental Funds **\$ (9,928,110)**

Amounts reported for governmental activities in the statement
of activities are different because:

Governmental funds report capital outlays as expenditures;
however, in the statement of activities, these costs are allocated
over their estimated useful lives as depreciation:

Depreciation expense	\$ (10,145,700)	
Capitalized capital outlay	<u>13,846,241</u>	3,700,541

The net effect of other transactions involving capital assets that decreased net assets	(9,925)
--	---------

Revenue is reported in the statement of activities that does not provide current financial resources and is not reported as revenue in the governmental funds	431,891
---	---------

Revenue is reported in the statement of activities that does not provide current financial resources and is not reported as revenue in the governmental funds - Prior year	(487,281)
--	-----------

Underwriter's premium reported as revenue in the funds and amortized in the statement of activities.	1,092,492
---	-----------

Repayment of bond principal is an expenditure in the governmental funds, but not in the statement of activities (where it reduces long-term debt)	13,660,000
---	------------

Accrued interest expense is recorded in the statement of activities when incurred; it is not reported in governmental funds until paid	(987,249)
--	-----------

Accrued interest expense is recorded in the statement of activities when incurred; it is not reported in governmental funds until paid - Prior year	1,078,157
---	-----------

Deferred charges on debt refunding were recognized at the government-wide level and are being amortized to expense over the life of the bonds in the statement of activities	(428,241)
--	-----------

Compensated absences, as well as self-insured liability claims and early retirement incentives, are recorded when earned in the statement of activities. In the current year, more was paid out than earned	467,793
--	---------

Change in pension expense related to deferred items	1,013,008
---	-----------

Revenue in support of pension contributions made subsequent to the measurement date	<u>(933,292)</u>
--	------------------

Change in Net Position of Governmental Activities	<u><u>\$ 8,669,784</u></u>
--	-----------------------------------

Walled Lake Consolidated School District

Fiduciary Funds Statement of Fiduciary Assets and Liabilities June 30, 2017

	<u>Agency Funds</u>
Assets	
Cash and investments (Note 3)	\$ 1,480,645
Due from other funds (Note 5)	480,154
Accounts receivable	<u>3,735</u>
Total assets	<u>\$ 1,964,534</u>
Liabilities - Due to student groups	<u>\$ 1,964,534</u>

Walled Lake Consolidated School District

Notes to Financial Statements June 30, 2017

Note I - Nature of Business and Significant Accounting Policies

The accounting policies of Walled Lake Consolidated School District (the "School District") conform to accounting principles generally accepted in the United States of America (GAAP) as applicable to governmental units. The following is a summary of the significant accounting policies used by the School District:

Reporting Entity

The School District is governed by an elected seven-member Board of Education. The accompanying financial statements have been prepared in accordance with criteria established by the Governmental Accounting Standards Board for determining the various governmental organizations to be included in the reporting entity. These criteria include significant operational financial relationships that determine which of the governmental organizations are a part of the School District's reporting entity, and which organizations are legally separate component units of the School District. Financial accountability is defined as the appointment of a voting majority of the component unit's board, and either (1) the School District's ability to impose its will over the component unit, or (2) the possibility that the component unit will provide a financial benefit to or impose a financial burden on the School District. Based on the application of the criteria, the School District does not contain any component units. The accompanying financial statements include all funds, departments, and other operations that are subject to the oversight of the Board of Education described above. There are no other agencies or other units of government that have been or should be combined within the School District's financial statements.

Government-wide and Fund Financial Statements

The government-wide financial statements (i.e., the statement of net position and the statement of activities) report information on all of the nonfiduciary activities of the primary government. For the most part, the effect of interfund activity has been removed from these statements. All of the School District's government-wide activities are considered governmental activities.

The statement of activities demonstrates the degree to which the direct expenses of a given function or segment are offset by program revenue. Direct expenses are those that are clearly identifiable with a specific function. Program revenue includes (1) charges to customers or applicants who purchase, use, or directly benefit from goods, services, or privileges provided by a given function and (2) grants and contributions that are restricted to meeting the operational or capital requirements of a particular function. Taxes, intergovernmental payments, and other items not properly included among program revenue are reported instead as general revenue.

Walled Lake Consolidated School District

Notes to Financial Statements June 30, 2017

Note 1 - Nature of Business and Significant Accounting Policies (Continued)

Separate financial statements are provided for governmental funds and fiduciary funds, even though the latter are excluded from the government-wide financial statements. Major individual governmental funds are reported as separate columns in the fund financial statements.

Measurement Focus, Basis of Accounting, and Financial Statement Presentation

Government-wide Financial Statements - The government-wide financial statements are reported using the economic resources measurement focus and the accrual basis of accounting. Revenue is recorded when earned and expenses are recorded when a liability is incurred, regardless of the timing of related cash flows. Property taxes are recognized as revenue in the year for which they are levied. Grants, categorical aid, and similar items are recognized as revenue as soon as all eligibility requirements imposed by the provider have been met.

As a general rule, the effect of interfund activity has been eliminated from the government-wide financial statements.

Amounts reported as program revenue include (1) charges to customers or applicants for goods, services, or privileges provided; (2) operating grants and contributions; and (3) capital grants and contributions. Internally dedicated resources are reported as general revenue rather than as program revenue. Likewise, general revenue includes all taxes, unrestricted state aid, and unrestricted federal funds.

Fund Financial Statements - Governmental fund financial statements are reported using the current financial resources measurement focus and the modified accrual basis of accounting. Revenue is recognized as soon as it is both measurable and available. Revenue is considered to be available if it is collected within the current period or soon enough thereafter to pay liabilities of the current period. Revenue not meeting this definition is classified as a deferred inflow of resources. For this purpose, the School District considers revenue to be available if it is collected within 60 days of the end of the current fiscal period. Expenditures generally are recorded when a liability is incurred, as under accrual accounting. However, debt service expenditures, as well as expenditures related to compensated absences and claims and judgments, are recorded only when payment is due.

Property taxes, unrestricted state aid, intergovernmental grants, and interest associated with the current fiscal period are all considered to be susceptible to accrual and so have been recognized as revenue of the current fiscal period. All other revenue items are considered to be available only when cash is received by the School District.

Fiduciary fund statements are also reported using the economic resources measurement focus and the accrual basis of accounting.

Walled Lake Consolidated School District

Notes to Financial Statements June 30, 2017

Note I - Nature of Business and Significant Accounting Policies (Continued)

The School District reports the following major governmental funds:

General Fund - The General Fund is the School District's primary operating fund. It accounts for all financial resources of the School District, except those required to be accounted for in another fund.

2014 Bond Issue Capital Projects Fund - The 2014 Bond Issue Capital Projects Fund is used to record bond proceeds or other revenue and disbursements of invoices specifically designated for security enhancements to school buildings and other facilities, to upgrade technology infrastructure, and to purchase school buses. The fund operates until the purpose for which it was created is accomplished.

Additionally, the School District reports the following fund types:

Special Revenue Funds - Special revenue funds are used to account for the proceeds of specific revenue sources that are restricted to expenditure for specified purposes. The School District's special revenue funds are shown in the nonmajor governmental funds combining schedules included in the other supplemental information. Any operating deficit generated by these activities is the responsibility of the General Fund.

The School District's special revenue funds are as follows:

The Cafeteria Fund accounts for all monies generated from the cafeteria operations throughout the various buildings of the School District. Revenue sources for the Cafeteria Fund include sales to customers and dedicated grants from state and federal sources.

The Community Education Fund is used to account for all monies originating from educational programs run by the School District other than preschool and kindergarten through 12th grade programs. Revenue sources for the Community Education Fund consist primarily of tuition and fees charged to users.

The Preschool Fund accounts for all monies originating from the preschool programs run by the School District. Revenue sources for the Preschool Fund consist primarily of tuition charged to users.

The Enrichment/Prime Time Care Fund accounts for all monies originating from the School District's Enrichment and Prime Time Care programs. Revenue sources for the Enrichment/Prime Time Care Fund consist primarily of tuition and fees charged to users.

Walled Lake Consolidated School District

Notes to Financial Statements June 30, 2017

Note 1 - Nature of Business and Significant Accounting Policies (Continued)

Debt Service Funds - Debt service funds are used to record tax, interest, and other revenue for payment of interest, principal, and other expenditures on the various bond issues. The School District currently has five debt service funds. The 2014 Debt Retirement Fund was created for school building and site improvements. The 2012 Debt Retirement Fund was created for the advance refunding of a portion of the 2004 bond issue. The 2011 Debt Retirement Fund was created for the advance refunding of a portion of the 2001 bond issue. The 2015 Debt Retirement Fund was created for the advance refunding of a portion of the 2005 bond issue. The 2016 Debt Retirement Fund was created for the advance refunding of a portion of the 2006 bond issue.

Sinking Fund Capital Projects Fund - The Sinking Fund Capital Projects Fund contains the related tax revenue and accounts for the expenditures of approved Sinking Fund projects. The fund operates until the purpose for which it was created is accomplished.

Student Activities Agency Fund - The School District maintains an Agency Fund to record the transactions of student groups for school and school-related purposes. The funds are segregated and held in trust for the students.

Assets, Liabilities, and Net Position or Equity

Cash and Investments - Cash and investments include cash on hand, demand deposits, and short-term investments with a maturity of three months or less when acquired. Investments are stated at fair value except for the investments in MILAF, which are valued at amortized cost. Pooled investment income from the debt service funds is generally allocated to each fund using the same percentages to split property taxes.

Receivables and Payables - In general, outstanding balances between funds are reported as "due to/from other funds."

The School District considers all receivables to be fully collectible; accordingly, no allowance for uncollectible amounts is recorded. Property taxes are levied on July 1 for taxes due September 15. Taxes are considered delinquent on March 1 of the following year. At this time, penalties and interest are assessed and the total obligation is added to the county tax rolls.

Inventories and Prepaid Costs - Inventories are valued at cost, on a first-in, first-out basis. Inventories of governmental funds are recorded as expenditures when consumed rather than when purchased. Certain payments to vendors reflect costs applicable to future fiscal years and are recorded as prepaid costs in both government-wide and fund financial statements. Prepaid costs of governmental funds are recorded as expenditures when consumed rather than when purchased.

Walled Lake Consolidated School District

Notes to Financial Statements June 30, 2017

Note 1 - Nature of Business and Significant Accounting Policies (Continued)

Restricted Assets - The unspent bond proceeds and related interest of the capital projects funds are required to be set aside for construction. In addition, the unspent property taxes levied in the debt service funds and the Sinking Fund are required to be set aside for future bond principal and interest and approved Sinking Fund projects, respectively. These amounts have been classified as restricted assets.

Capital Assets - Capital assets, which include land, buildings, equipment, and vehicles, are reported in the applicable governmental column in the government-wide financial statements. Capital assets are defined by the School District as assets with an initial individual cost of more than \$10,000 and an estimated useful life in excess of one year. Such assets are recorded at historical cost, or estimated historical cost if purchased or constructed. Donated capital assets are recorded at estimated fair market value at the date of donation. Costs of normal repair and maintenance that do not add to the value or materially extend asset life are not capitalized. The School District does not have infrastructure-type assets.

Buildings, equipment, and vehicles are depreciated using the straight-line method over the following useful lives:

Buildings and building additions	20 to 50 years
Buses and other vehicles	5 to 10 years
Furniture and other equipment	5 to 10 years

Compensated Absences (Vacation and Sick Leave) and Longevity - The liability for compensated absences reported in the government-wide statements consists of earned but unused accumulated vacation and sick leave benefits. The liability for longevity payments is a future benefit that consists of amounts due to eligible employees based on their respective contracts. A liability for these amounts is reported in governmental funds as they come due for payment. The liability has been calculated using the vesting method, in which leave amounts for both employees who are currently eligible to receive termination payments at normal retirement age and other employees who are expected to become eligible in the future to receive such payments upon normal retirement are included.

Long-term Obligations - In the government-wide financial statements, long-term debt and other long-term obligations are reported as liabilities in the statement of net position. Bond premiums and discounts are deferred and amortized over the life of the bonds using the effective interest method. Bonds payable are reported net of the applicable bond premium or discount. Bond issuance costs are reported as debt service expenditures.

In the fund financial statements, governmental fund types recognize bond premiums and discounts, as well as bond issuance costs, during the current period.

Walled Lake Consolidated School District

Notes to Financial Statements June 30, 2017

Note 1 - Nature of Business and Significant Accounting Policies (Continued)

The face amount of debt issued is reported as other financing sources. Premiums received on debt issuances are reported as other financing sources, while discounts are reported as other financing uses. Issuance costs are reported as debt service expenditures.

Deferred Outflows/Inflows of Resources - In addition to assets, the statement of net position reports deferred outflows of resources, which represents a consumption of net position or fund balance that applies to a future period and will not be recognized as an outflow of resources (expenditure) until then. The School District reports deferred outflows related to pensions and deferred charges relating to bond refundings.

In addition to liabilities, the statement of net position reports deferred inflows of resources, which represents an acquisition of net position that applies to a future period and will not be recognized as an inflow of resources (revenue) until that time. The School District's deferred inflows of resources are related to funding received through state appropriations for contributions to the MPSERS pension plan after the measurement date, amounts related to the pension plan, and unavailable revenue from grant payments.

Fund Balance - In the fund financial statements, governmental funds report the following components of fund balance:

- **Nonspendable:** Amounts that are not in spendable form or are legally or contractually required to be maintained intact
- **Restricted:** Amounts that are legally restricted by outside parties, constitutional provisions, or enabling legislation for use for a specific purpose
- **Committed:** Amounts that have been formally set aside by the Board of Education for use for specific purposes. Commitments are made and can be rescinded only via resolution of the Board of Education.
- **Assigned:** Intent to spend resources on specific purposes expressed by the Board of Education
- **Unassigned:** Amounts that do not fall into any other category above. This is the residual classification for amounts in the General Fund and represents fund balance that has not been assigned to other funds and has not been restricted, committed, or assigned to specific purposes in the General Fund.

Walled Lake Consolidated School District

Notes to Financial Statements June 30, 2017

Note 1 - Nature of Business and Significant Accounting Policies (Continued)

On an annual basis, the superintendent recommends and the Board of Education approves a fund balance policy. The Board of Education prescribed a minimum fund balance for 2016-2017 of \$8.5 million in the General Fund. This is deemed to be the prudent amount to maintain the School District's ability to meet obligations as they come due throughout the year.

Flow Assumption - Restricted resources are utilized first when both restricted and unrestricted resources are used for the same purpose. When an expenditure is incurred for purposes for which amounts in any of the unrestricted fund balance classifications could be used, it is the School District's policy to spend funds in this order: committed, assigned, then unassigned.

Comparative Data - Comparative data is not included in the School District's financial statements.

Pensions - For purposes of measuring the net pension liability, deferred outflows of resources and deferred inflows of resources related to pensions, and pension expenditures, information about the fiduciary net position of the Michigan Public School Employees' Retirement System (MPERS) and additions to/deductions from MPERS fiduciary net position have been determined on the same basis as they are reported by MPERS. MPERS uses the economic resources measurement focus and the full accrual basis of accounting. Contribution revenue is recorded as contributions are due, pursuant to legal requirements. Benefit payments (including refunds of employee contributions) are recognized as expenditures when due and payable in accordance with the plan's benefit terms. Related plan investments are reported at fair value.

Note 2 - Stewardship, Compliance, and Accountability

Budgetary Information - Annual budgets are adopted on a basis consistent with generally accepted accounting principles and state law for the General Fund and all special revenue funds, capital projects funds, and debt service funds. All annual appropriations lapse at year end.

The budget document presents information by fund and function. The legal level of budgetary control adopted by the governing body (i.e., the level at which expenditures may not legally exceed appropriations) is the function level. State law requires the School District to have its budget in place by July 1. Expenditures in excess of amounts budgeted are a violation of Michigan law. State law permits districts to amend their budgets during the year. During the year, the budget was amended in a legally permissible manner. For budgeting purposes, capital outlay is classified within the related function and proceeds from the sale of capital assets and transfers in are classified within local revenue. There were no significant amendments during the year other than in the capital projects funds to adjust for the costs of bond funded projects.

Walled Lake Consolidated School District

Notes to Financial Statements June 30, 2017

Note 2 - Stewardship, Compliance, and Accountability (Continued)

Encumbrances (e.g., purchase orders, contracts) outstanding at year end do not constitute expenditures or liabilities because the goods or services have not been received as of year end; the commitments will be reappropriated and honored during the subsequent year.

Excess of Expenditures Over Appropriations in Budgeted Funds - The School District did not have significant expenditure budget variances.

Capital Projects Fund Compliance - The 2014 Bond Issue Capital Projects Fund includes capital project activities funded with bonds issued after May 1, 1994. For this capital project, the School District has complied with the applicable provisions of §1351a of the State of Michigan's School Code.

The Sinking Fund Capital Projects Fund records capital project activities funded with sinking fund millage. For this fund, the School District has complied with the applicable provisions of §1212(1) of the State of Michigan School Code and the State of Michigan Department of Treasury Letter No. 01-95.

Note 3 - Deposits and Investments

State statutes and the School District's investment policy authorize the School District to make deposits in the accounts of federally insured banks, credit unions, and savings and loan associations that have offices in Michigan. The School District is allowed to invest in U.S. Treasury or agency obligations, U.S. government repurchase agreements, bankers' acceptances, commercial paper rated prime at the time of purchase that matures not more than 270 days after the date of purchase, mutual funds, and investment pools that are composed of authorized investment vehicles. The School District's deposits are in accordance with statutory authority.

The School District has designated 13 financial institutions and utilized two for the deposit of its funds.

The investment policy adopted by the Board of Education in accordance with state statutes has authorized investment in bonds and securities of the United States government and bank accounts and CDs, and the remainder of state statutory authority as listed above.

There are no limitations or restrictions on participant withdrawals for the investment pools that are recorded at amortized cost, except for a one-day minimum investment period on MILAF cash management funds and a 14-day redemption limitation on MILAF MAX Class funds.

Walled Lake Consolidated School District

Notes to Financial Statements June 30, 2017

Note 3 - Deposits and Investments (Continued)

The School District's cash and investments are subject to several types of risk, which are described in more detail below:

Custodial Credit Risk of Bank Deposits - Custodial credit risk of bank deposits is the risk that in the event of a bank failure, the School District's deposits may not be returned to it. The School District's investment policy requires that financial institutions be evaluated and only those with an acceptable risk level be used for the School District's deposits for custodial credit risk. At year end, the School District's deposit balance of \$20,714,317 had \$20,464,317 of bank deposits (checking and savings accounts) that were uninsured and uncollateralized. The School District believes that due to the dollar amounts of cash deposits and the limits of FDIC insurance, it is impractical to insure all deposits. As a result, the School District evaluates each financial institution with which it deposits funds and assesses the level of risk of each institution; only those institutions with an acceptable estimated risk level are used as depositories.

Custodial Credit Risk of Investments - Custodial credit risk of investments is the risk that, in the event of the failure of the counterparty, the School District will not be able to recover the value of its investments or collateral securities that are in the possession of an outside party. The School District's policy for custodial credit risk states custodial credit risk will be minimized by limiting investments to the types of securities allowed by state law, and by pre-qualifying the financial institutions, broker/dealers, intermediaries, and advisors with which the School District will do business using the criteria established in the investment policy. The School District has no federal agency securities held by a counterparty that are uninsured and unregistered.

Interest Rate Risk - Interest rate risk is the risk that the value of investments will decrease as a result of a rise in interest rates. The School District's investment policy does not restrict investment maturities, other than commercial paper which can only be purchased with a 270-day maturity. The School District's policy minimizes interest rate risk by requiring the structuring of the investment portfolio so that securities mature to meet cash requirements for ongoing operations, thereby avoiding the need to sell securities in the open market; and investing operating funds primarily in shorter-term securities, liquid asset funds, money market mutual funds, or similar investment pools, and limiting the average maturity in accordance with the School District's cash requirements.

Walled Lake Consolidated School District

Notes to Financial Statements June 30, 2017

Note 3 - Deposits and Investments (Continued)

Credit Risk - State law limits investments in commercial paper to the top two ratings issued by nationally recognized statistical rating organizations. The School District's investment policy does not further limit its investment choices.

At year end, the maturities of investments and the credit quality ratings of debt securities (other than the U.S. government) are as follows:

Investment	Fair Value	Maturities	Rating	Rating Organization
Michigan Liquid Asset Fund Cash Management Money Market Fund	\$ 31,058	Not required	AAAm	S&P
Michigan Liquid Asset Fund MAX Class Money Market	<u>8,337,314</u>	Not required	AAAm	S&P
Total investments	<u>\$ 8,368,372</u>			

Concentration of Credit Risk - The School District places no limit on the amount the School District may invest in any one issuer. The School District's policy minimizes concentration of credit risk by requiring diversification of the investment portfolio so that the impact of potential losses from any one type of security or issuer will be minimized.

Foreign Currency Risk - Foreign currency risk is the risk that an investment denominated in the currency of a foreign country could reduce its U.S. dollar value as a result of changes in foreign currency exchange rates. State law and the School District's policy prohibit investment in foreign currency.

Walled Lake Consolidated School District

Notes to Financial Statements June 30, 2017

Note 4 - Capital Assets

Capital asset activity of the School District's governmental activities was as follows:

	Balance July 1, 2016	Additions and Adjustments	Disposals and Adjustments	Balance June 30, 2017
Assets not being depreciated:				
Land	\$ 12,729,972	\$ -	\$ -	\$ 12,729,972
Construction in progress	12,918,602	3,456,128	12,411,546	3,963,184
Subtotal	25,648,574	3,456,128	12,411,546	16,693,156
Capital assets being depreciated:				
Buildings and building improvements	317,122,356	13,709,473	-	330,831,829
Furniture and equipment	28,340,324	7,515,319	-	35,855,643
Buses and other vehicles	8,776,074	1,566,942	950,322	9,392,694
Subtotal	354,238,754	22,791,734	950,322	376,080,166
Accumulated depreciation:				
Buildings and building improvements	114,215,615	6,878,917	-	121,094,532
Furniture and equipment	13,972,714	2,750,925	-	16,723,639
Buses and other vehicles	5,649,264	515,858	950,322	5,214,800
Subtotal	133,837,593	10,145,700	950,322	143,032,971
Net capital assets being depreciated	220,401,161	12,646,034	-	233,047,195
Net capital assets	\$ 246,049,735	\$ 16,102,162	\$ 12,411,546	\$ 249,740,351

Depreciation expense was charged to activities of the School District as follows:

Governmental activities:	
Instruction	\$ 6,391,791
Support services	3,246,624
Unallocated	507,285
Total governmental activities	\$ 10,145,700

Walled Lake Consolidated School District

Notes to Financial Statements June 30, 2017

Note 4 - Capital Assets (Continued)

Construction Commitments - The School District has active construction projects at year end. The projects include the 2014 Bond Issue and various Sinking Fund projects. At year end, the School District's commitments with contractors are as follows:

	<u>Spent to Date</u>	<u>Remaining Commitments</u>
2014 Bond Issue	\$ 22,312,386	\$ 4,303,911
Sinking Fund projects	685,650	1,152,847
Total	<u>\$ 22,998,036</u>	<u>\$ 5,456,758</u>

Note 5 - Interfund Receivables, Payables, and Transfers

The composition of interfund balances is as follows:

	<u>Interfund Receivables</u>	<u>Interfund Payables</u>
General Fund	\$ -	\$ 1,931,982
2014 Bond Issue Fund	-	1,950
Nonmajor governmental funds	1,457,633	3,855
Fiduciary Fund	480,154	-
Total	<u>\$ 1,937,787</u>	<u>\$ 1,937,787</u>

Interfund balances due from the General Fund represent routine deposits received by the General Fund that will be transferred to other funds' investment accounts. Interfund balances due to the debt service funds are due to the timing of property tax receipts originally received in the General Fund.

Interfund Transfers

The Enrichment/Prime Time Care Fund transferred excess fund balance to the General Fund in the amount of \$300,000.

Note 6 - Due from Other Governmental Units

The State of Michigan distributes state aid payments from October through August. At June 30, 2017, two payments are still outstanding which make up the majority of the balance due from other governmental units. The remainder relates to federal grants receivable due from various governmental units.

Walled Lake Consolidated School District

Notes to Financial Statements June 30, 2017

Note 7 - Unavailable/Unearned Revenue

Governmental funds report unavailable revenue in connection with receivables for revenue that is not considered to be available to liquidate liabilities of the current period. Governmental funds also report unearned revenue in connection with resources that have been received but not yet earned. At the end of the current fiscal year, the various components of unearned and unavailable revenue are as follows:

	Deferred Inflows - Unavailable	Liability - Unearned
Tuition received in advance	\$ -	\$ 263,418
Grant payments not available to liquidate current liabilities	431,891	-
Grant and categorical aid payment received prior to meeting all eligibility requirements	-	529,214
Total	<u>\$ 431,891</u>	<u>\$ 792,632</u>

Note 8 - Long-term Debt

The School District issues bonds, notes, and other contractual commitments to provide for the acquisition and construction of major capital facilities and the acquisition of certain equipment. General obligation bonds are direct obligations and pledge the full faith and credit of the School District. Qualified bonds are fully guaranteed by the State of Michigan. Other long-term obligations include compensated absences, risk liabilities, and early retirement incentives which are paid for annually out of the General Fund.

During the year, the School District entered into a line of credit agreement with an available borrowing limit of \$5,000,000. Interest is payable monthly at the bank's prime rate less 0.85 percent (an effective rate of 3.40 percent at June 30, 2017) or the one-month LIBOR multiplied by 72 percent plus 1.10 percent (an effective rate of 1.94 percent at June 30, 2017). There was no outstanding balance on the line of credit at June 30, 2017.

Subsequent to year end, on July 31, 2017, the School District renewed the line of credit agreement with an available borrowing limit of \$5,000,000 through July 31, 2018. Interest is payable monthly at the bank's prime rate less 0.35 percent.

Walled Lake Consolidated School District

Notes to Financial Statements June 30, 2017

Note 8 - Long-term Debt (Continued)

Long-term debt activity is summarized below:

Governmental Activities	<u>Beginning Balance</u>	<u>Additions</u>	<u>Reductions</u>	<u>Ending Balance</u>	<u>Due Within One Year</u>
Bonds	\$ 139,470,000	\$ -	\$ 13,660,000	\$ 125,810,000	\$ 13,840,000
Bond premium	7,141,385	-	1,092,492	6,048,893	1,092,492
Less deferred amounts - Deferred outflow - Deferred charges from refunding bonds	(2,062,838)	-	(428,241)	(1,634,597)	(428,241)
Total	144,548,547	-	14,324,251	130,224,296	14,504,251
Compensated absences and longevity	4,794,178	2,110,775	1,997,579	4,907,374	1,997,000
Workers' compensation	210,989	-	210,989	-	-
Early retirement incentive	740,000	-	370,000	370,000	370,000
Total governmental activities	<u>\$ 150,293,714</u>	<u>\$ 2,110,775</u>	<u>\$ 16,902,819</u>	<u>\$ 135,501,670</u>	<u>\$ 16,871,251</u>

Total interest expense for the year was \$6,468,944. Annual debt service requirements to maturity for the above bond obligations are as follows:

<u>Years Ending June 30</u>	<u>Governmental Activities</u>		
	<u>Principal</u>	<u>Interest</u>	<u>Total</u>
2018	\$ 13,840,000	\$ 5,923,494	\$ 19,763,494
2019	11,915,000	6,342,394	18,257,394
2020	12,450,000	6,368,194	18,818,194
2021	13,045,000	5,754,494	18,799,494
2022	13,070,000	5,112,094	18,182,094
2023-2027	12,430,000	16,596,994	29,026,994
2028-2032	11,900,000	9,844,663	21,744,663
2033-2037	14,665,000	7,870,188	22,535,188
2038-2042	18,335,000	3,870,750	22,205,750
2043	4,160,000	208,000	4,368,000
Total	<u>\$ 125,810,000</u>	<u>\$ 67,891,265</u>	<u>\$ 193,701,265</u>

Walled Lake Consolidated School District

Notes to Financial Statements June 30, 2017

Note 8 - Long-term Debt (Continued)

Governmental Activities

General obligation bonds consist of the following:

\$49,485,000 general obligation bonds due in annual installments of \$4,845,000 to \$5,075,000 through May 1, 2022; interest at 5.0 percent. Purpose of issue: partial refunding of 2001 bond issue	\$ 24,745,000
\$7,225,000 general obligation bonds due in annual installments of \$590,000 to \$1,670,000 through May 1, 2019; interest at 3.0 percent. Purpose of issue: partial refunding of 2004 bond issue	2,260,000
\$65,760,000 general obligation bonds due in annual installments of \$1,075,000 to \$4,160,000 through May 1, 2043; interest at 2.0 percent to 5.0 percent. Purpose of issue: security enhancements to school buildings and other facilities, to upgrade technology infrastructure, and purchase school buses	65,010,000
\$37,280,000 general obligation bonds due in annual installments of \$4,160,000 to \$6,020,000 through May 1, 2022; interest at 5.0 percent. Purpose of issue: partial refunding of 2005 bond issue	25,120,000
\$8,675,000 general obligation bonds due in annual installments of \$1,010,000 to \$1,575,000 from May 1, 2019 through May 1, 2024; interest at 4.0 percent. Purpose of issue: partial refunding of 2006 bond issue	8,675,000
Total bonded debt	<u>\$ 125,810,000</u>

Note 9 - Restricted Assets

The balances for the restricted asset accounts are as follows:

	Governmental Activities
Unspent bond proceeds and related interest	\$ 8,368,372
Unspent sinking fund property taxes levied	2,131,461
Unspent debt service property taxes levied	1,918,094
Total restricted assets	<u>\$ 12,417,927</u>

Walled Lake Consolidated School District

Notes to Financial Statements June 30, 2017

Note 10 - Risk Management

The School District is exposed to various risks of loss related to property loss, torts, errors and omissions, and employee injuries (workers' compensation), as well as medical benefits provided to employees. The School District has purchased commercial insurance for property and general liability claims and participates in the SET SEG risk pool for claims relating to property and general liability. Settled claims relating to the commercial insurance did not exceed the amount of insurance coverage in any of the past three years.

The shared-risk pool program in which the School District participates operates as a common risk-sharing management program for school districts in Michigan; member premiums are used to purchase commercial excess insurance coverage and to pay member claims in excess of deductible amounts.

Beginning January 1, 2014, the School District was no longer self-insured for workers' compensation claims, and workers' compensation insurance has been in place since that time.

Note 11 - Michigan Public School Employees' Retirement System

Plan Description - The School District participates in the Michigan Public School Employees' Retirement System (MPSERS or the "System"), a statewide, cost-sharing, multiple-employer defined benefit public employee retirement system governed by the State of Michigan that covers substantially all employees of the School District. Certain School District employees also receive defined contribution retirement and healthcare benefits through the System. The System provides retirement, survivor, and disability benefits to plan members and their beneficiaries. The System also provides postemployment healthcare benefits to retirees and beneficiaries who elect to receive those benefits.

The Michigan Public School Employees' Retirement System issues a publicly available financial report that includes financial statements and required supplemental information for the pension and postemployment healthcare plans. That report is available on the web at <http://www.michigan.gov/orsschools>, or by writing to the Office of Retirement System (ORS) at 7150 Harris Drive, P.O. Box 30171, Lansing, MI 48909.

Contributions - Public Act 300 of 1980, as amended, required the School District to contribute amounts necessary to finance the coverage of pension benefits of active and retired members. Contribution provisions are specified by state statute and may be amended only by action of the State Legislature. Under these provisions, each school district's contribution is expected to finance the costs of benefits earned by employees during the year, with an additional amount to finance a portion of the unfunded accrued liability.

Walled Lake Consolidated School District

Notes to Financial Statements June 30, 2017

Note 11 - Michigan Public School Employees' Retirement System (Continued)

The School District's contributions are determined based on employee elections. There are seven different benefit options included in the plan available to employees based on date of hire. Contribution rates are adjusted annually by the ORS.

The range of rates is as follows:

School District

October 1, 2015 - September 30, 2016	14.56 - 18.95%
October 1, 2016 - June 30, 2017	15.27 - 19.03%

Depending on the plan selected, plan member contributions range from 0 percent up to 7.0 percent of gross wages. Plan members electing into the defined contribution plan are not required to make additional contributions.

The School District's required and actual contributions to the plan for the year ended June 30, 2017 were \$22,881,857, which includes the School District's contributions required for those members with a defined contribution benefit. The School District's required and actual contributions include an allocation of \$7,591,580 in revenue received from the State of Michigan, and remitted to the System, to fund the MPSERS unfunded actuarial accrued liability (UAAL) stabilization rate for the year ended June 30, 2017.

Benefits Provided - Benefit provisions of the defined benefit pension plan are established by state statute, which may be amended. Public Act 300 of 1980, as amended, establishes eligibility and benefit provisions for the defined benefit (DB) pension plan.

Depending on the plan option selected, member retirement benefits are calculated as final average compensation times years of service times a pension factor ranging from 1.25 percent to 1.50 percent. The requirements to retire range from attaining the age of 46 to 60 with years of service ranging from 5 to 30 years, depending on when the employee became a member. Early retirement is computed in the same manner as a regular pension, but is permanently reduced 0.50 percent for each full and partial month between the pension effective date and the date the member will attain age 60. There is no mandatory retirement age.

Members are eligible for nonduty disability benefits after 10 years of service and for duty-related disability benefits upon hire. Disability retirement benefits are determined in the same manner as retirement benefits but are payable immediately without an actuarial reduction. The disability benefits plus authorized outside earnings are limited to 100 percent of the participant's final average compensation with an increase of 2 percent each year thereafter.

Walled Lake Consolidated School District

Notes to Financial Statements June 30, 2017

Note 11 - Michigan Public School Employees' Retirement System (Continued)

Benefits may transfer to a beneficiary upon death and are determined in the same manner as retirement benefits, but with an actuarial reduction.

Benefit terms provide for annual cost-of-living adjustments to each employee's retirement allowance subsequent to the employee's retirement date. The annual adjustment, if applicable, is 3 percent. For some members who do not receive an annual increase, they are eligible to receive a supplemental payment in those years when investment earnings exceed actuarial assumptions.

Net Pension Liability, Deferrals, and Pension Expense - At June 30, 2017, the School District reported a liability of \$248,061,578 for its proportionate share of the net pension liability. The net pension liability was measured as of September 30, 2016 and the total pension liability used to calculate the net pension liability was determined by an actuarial valuation as of September 30, 2015, which used update procedures to roll forward the estimated liability to September 30, 2016. The School District's proportion of the net pension liability was based on a projection of its long-term share of contributions to the pension plan relative to the projected contributions of all participating reporting units, actuarially determined. At September 30, 2017, the School District's proportion was 0.994267 percent.

For the year ended June 30, 2017, the School District recognized pension expenditures of \$21,771,657, inclusive of payments to fund the MPSERS UAAL stabilization rate. At June 30, 2017, the School District reported deferred outflows of resources and deferred inflows of resources related to pensions from the following sources:

	Deferred Outflows of Resources	Deferred Inflows of Resources
Difference between expected and actual experience	\$ 3,091,502	\$ (587,912)
Changes of assumptions	3,878,249	-
Net difference between projected and actual earnings on pension plan assets	4,122,782	-
Changes in proportion and differences between the School District's contributions and proportionate share of contributions	841	(5,589,424)
The School District's contributions subsequent to the measurement date	19,002,323	-
Total	<u>\$ 30,095,697</u>	<u>\$ (6,177,336)</u>

Walled Lake Consolidated School District

Notes to Financial Statements June 30, 2017

Note 11 - Michigan Public School Employees' Retirement System (Continued)

Amounts reported as deferred outflows of resources and deferred inflows of resources related to pensions will be recognized in pension expenditures as follows:

<u>Years Ending June 30</u>	<u>Amount</u>
2018	\$ 81,759
2019	(242,531)
2020	4,469,214
2021	<u>607,596</u>
Total	<u>\$ 4,916,038</u>

In addition, the contributions subsequent to the measurement date will be included as a reduction of the net pension liability in the next year.

Actuarial Assumptions - The total pension liability as of September 30, 2016 is based on the results of an actuarial valuation date of September 30, 2015 and rolled forward:

Actuarial cost method	Entry age normal cost actuarial cost method
Investment rate of return	7.00 to 8.00 percent, net of investment expenses based on the groups
Salary increases	3.50 - 12.3 percent, including wage inflation of 3.5 percent
Mortality basis	RP2000 Combined Healthy Mortality Table, adjusted for mortality improvements to 2025 using projection scale BB
Cost of living pension adjustments	3 percent annual noncompounded for MIP members

Assumption changes as a result of an experience study for the periods 2007 through 2012 have been adopted by the System for use in the annual pension valuations beginning with the September 30, 2014 valuation.

Discount Rate - The discount rate used to measure the total pension liability was 7.00 - 8.00 percent depending on the plan option. The projection of cash flows used to determine the discount rate assumed that employee contributions will be made at the current contribution rate and that employer contributions will be made at contractually required rates. Based on those assumptions, the pension plan's fiduciary net position was projected to be available to make all projected future benefit payments for current active and inactive employees. Therefore, the long-term expected rate of return on pension plan investments was applied to all periods of projected benefit payments to determine the total pension liability.

Walled Lake Consolidated School District

Notes to Financial Statements June 30, 2017

Note 11 - Michigan Public School Employees' Retirement System (Continued)

The long-term expected rate of return on pension plan investments was determined using a building-block method in which best-estimate ranges of expected future real rates of return (expected returns, net of pension plan investment expense, and inflation) are developed for each major asset class. These ranges are combined to produce the long-term expected rate of return by weighting the expected future real rates of return by the target asset allocation percentage and by adding expected inflation. The target allocation and best estimates of arithmetic real rates of return for each major asset class are summarized in the following table:

Investment Category	Target Allocation	Long-term Expected Real Rate of Return
Domestic equity pools	28.0 %	5.9 %
Private equity pools	18.0	9.2
International equity pools	16.0	7.2
Fixed-income pools	10.5	0.9
Real estate and infrastructure pools	10.0	4.3
Real return, opportunistic, and absolute pools	15.5	6.0
Short-term investment pools	2.0	-
Total	100.0 %	

On February 23, 2017, MPSERS approved a decrease in the discount rate for the September 30, 2016 annual actuarial valuation of 0.5 percent. As a result, the actuarial computed employer contributions and the net pension liability will increase for the measurement period ending September 30, 2017.

Sensitivity of the Net Pension Liability to Changes in the Discount Rate - The following presents the net pension liability of the School District calculated using the discount rate of 7.00 - 8.00 percent, depending on the plan option. The following also reflects what the School District's net pension liability would be if it were calculated using a discount rate that is 1.00 percentage point lower (6.0 - 7.0 percent) or 1.00 percentage point higher (8.0 - 9.0 percent) than the current rate:

1.00 Percent Decrease (6.0 - 7.0 Percent)	Current Discount Rate (7.0 - 8.0 Percent)	1.00 Percent Increase (8.0 - 9.0 Percent)
\$319,440,874	\$248,061,578	\$187,881,969

Pension Plan Fiduciary Net Position - Detailed information about the pension plan's fiduciary net position is available in the separately issued MPSERS financial report.

Walled Lake Consolidated School District

Notes to Financial Statements June 30, 2017

Note 11 - Michigan Public School Employees' Retirement System (Continued)

Amount Payable to the Pension Plan - At June 30, 2017, the School District reported a payable of \$4,593,226 for the outstanding amount of contributions to the pension plan required for the year ended June 30, 2017.

Postemployment Benefits Other Than Pensions (OPEB) - Under the MPSERS act, all retirees participating in the MPSERS pension plan have the option of continuing health, dental, and vision coverage through MPSERS. Retirees electing this coverage contribute an amount equivalent to the monthly cost for Part B Medicare and 10 percent, or 20 percent for those not Medicare eligible, of the monthly premium amount for the health, dental, and vision coverage at the time of receiving the benefits. The MPSERS board of trustees annually sets the employer contribution rate to fund the benefits on a pay-as-you-go basis. Participating employers are required to contribute at that rate. The employer contribution rate ranged from 6.4 percent to 6.83 percent of covered payroll for the period from July 1, 2016 to September 30, 2016 and from 5.69 percent to 5.91 percent of covered payroll for the period from October 1, 2016 through June 30, 2017 dependent upon the employee's date of hire and plan election as noted above. Members can choose to contribute 3 percent of their covered payroll to the Retiree Healthcare Fund and keep this premium subsidy benefit or they can elect not to pay the 3 percent contribution and instead choose the Personal Healthcare Fund, which can be used to pay healthcare expenses in retirement. Members electing the Personal Healthcare Fund will be automatically enrolled in a 2 percent employee contribution into their 457 account as of their transition date and create a 2 percent employer match into the employee's 403B account.

The School District's required and actual contributions to the plan for retiree healthcare benefits for the years ended June 30, 2017, 2016, and 2015 were \$4,804,719, \$4,660,690, and \$2,786,735, respectively. In addition, a portion ranging from 35-100 percent of the MPSERS UAAL stabilization rate is considered a contribution to the retiree healthcare plan.

Walled Lake Consolidated School District

Notes to Financial Statements June 30, 2017

Note 12 - Lease Commitments

The School District leases computer equipment under noncancelable operating lease agreements that expire at various dates through June 2023. Total costs for such leases were \$1,568,761 for the year ended June 30, 2017. The future minimum lease payments for these leases are as follows:

<u>Years Ending June 30</u>	<u>Amount</u>
2018	\$ 1,283,823
2019	1,158,434
2020	886,294
2021	404,984
2022	64,962
Thereafter	<u>13,783</u>
Total	<u>\$ 3,812,280</u>

Note 13 - Upcoming Accounting Pronouncements

In June 2015, the Governmental Accounting Standards Board (GASB) issued Statement No. 75, *Accounting and Financial Reporting for Postemployment Benefits Other Than Pensions*, which addresses reporting by governments that provide postemployment benefits other than pensions (OPEB) to their employees and for governments that finance OPEB for employees of other governments. This standard will require the School District to recognize on the basic financial statements its proportionate share of the net OPEB liability related to its participation in the MPSERS plan. The statement also enhances accountability and transparency through revised note disclosures and required supplemental information. The School District is currently evaluating the impact this standard will have on the financial statements when adopted. The provisions of this statement are effective for the School District's financial statements for the year ending June 30, 2018.

In January 2017, the GASB issued Statement No. 84, *Fiduciary Activities*, which establishes criteria for identifying fiduciary activities of all state and local governments. An activity meeting the criteria should be reported in a fiduciary fund in the basic financial statements. The School District is currently evaluating the impact this standard will have on the financial statements when adopted. The provisions of this statement are effective for the School District's financial statements for the year ending June 30, 2020.

Walled Lake Consolidated School District

Notes to Financial Statements June 30, 2017

Note 13 - Upcoming Accounting Pronouncements (Continued)

In June 2017, the GASB issued Statement No. 87, *Leases*, which improves accounting and financial reporting for leases by governments. This statement requires recognition of certain lease assets and liabilities for leases that previously were classified as operating leases and recognized as inflows of resources or outflows of resources based on the payment provisions of the contract. It establishes a single model for lease accounting based on the foundational principle that leases are financings of the right to use an underlying asset. Under this statement, a lessee is required to recognize a lease liability and an intangible right-to-use lease asset, and a lessor is required to recognize a lease receivable and a deferred inflow of resources. The School District is currently evaluating the impact this standard will have on the financial statements when adopted. The provisions of this statement are effective for the School District's financial statements for the year ending June 30, 2021.

Note 14 - Tax Abatements

The School District receives reduced property tax revenue as a result of Industrial Facilities Tax exemptions (PA 198 of 1974) and Brownfield Redevelopment agreements. Industrial Facilities Tax exemptions are intended to promote construction of new industrial facilities, or to rehabilitate historical facilities; Brownfield Redevelopment agreements are intended to reimburse taxpayers that remediate environmental contamination on their properties.

For the fiscal year ended June 30, 2017, the School District's property tax revenue was reduced by approximately \$214,000 under these programs.

The School District is reimbursed by the State of Michigan under the School Aid formula for lost revenue caused by tax abatements on the operating millage of non-homestead properties. The School District received approximately \$142,000 in reimbursements from the State of Michigan during the year ended June 30, 2017. The School District is not reimbursed for lost revenue from sinking fund or debt service millages.

Required Supplemental Information

Walled Lake Consolidated School District

Required Supplemental Information Budgetary Comparison Schedule - General Fund Year Ended June 30, 2017

	Original Budget	Final Budget	Actual	Over (Under) Final Budget
Revenue				
Local sources	\$ 34,479,755	\$ 33,771,998	\$ 33,925,927	\$ 153,929
State sources	103,895,719	107,638,495	107,413,170	(225,325)
Federal sources	5,647,022	5,910,566	5,381,881	(528,685)
Interdistrict sources	9,146,225	9,530,910	9,509,147	(21,763)
Total revenue	153,168,721	156,851,969	156,230,125	(621,844)
Expenditures				
Current:				
Instruction:				
Basic programs	81,846,743	82,599,753	82,293,229	(306,524)
Added needs	20,892,355	20,908,744	20,423,931	(484,813)
Adult/Continuing education	151,755	138,488	142,837	4,349
Support services:				
Pupil	12,900,879	13,639,470	13,351,650	(287,820)
Instructional staff	4,655,413	4,940,458	4,727,575	(212,883)
General administration	658,629	798,888	748,617	(50,271)
School administration	8,710,538	8,960,580	8,924,202	(36,378)
Business services	2,193,588	1,922,140	1,832,013	(90,127)
Operations and maintenance	9,601,027	10,058,123	9,808,947	(249,176)
Pupil transportation services	6,087,105	6,065,140	5,918,973	(146,167)
Central	4,001,738	4,498,000	4,255,915	(242,085)
Athletics	2,039,020	2,016,398	2,060,196	43,798
Community services	235,159	220,969	217,247	(3,722)
Total expenditures	153,973,949	156,767,151	154,705,332	(2,061,819)
Other Financing Sources				
Proceeds from sale of capital assets	460,000	55,000	39,695	(15,305)
Transfers in	450,000	300,000	300,000	-
Total other financing sources	910,000	355,000	339,695	(15,305)
Net Change in Fund Balance	104,772	439,818	1,864,488	1,424,670
Fund Balance - Beginning of year	9,742,046	9,742,046	9,742,046	-
Fund Balance - End of year	<u>\$ 9,846,818</u>	<u>\$ 10,181,864</u>	<u>\$ 11,606,534</u>	<u>\$ 1,424,670</u>

Walled Lake Consolidated School District

Note to Required Supplemental Information Year Ended June 30, 2017

Budgetary Information - Annual budgets are adopted on a basis consistent with generally accepted accounting principles and state law for the General Fund and all special revenue funds, capital projects funds, and debt service funds. All annual appropriations lapse at fiscal year end.

The budget document presents information by fund and function. The legal level of budgetary control adopted by the governing body (i.e., the level at which expenditures may not legally exceed appropriations) is the individual function level. State law requires the School District to have its budget in place by July 1. Expenditures in excess of amounts budgeted are a violation of Michigan law. State law permits school districts to amend their budgets during the year. During the year, the budgets were amended in a legally permissible manner. For budgeting purposes, capital outlay is classified within the related function and proceeds from the sale of capital assets and transfers are classified within local revenue. There were no significant amendments during the year.

Encumbrances (e.g., purchase orders, contracts) outstanding at year end do not constitute expenditures or liabilities because the goods or services have not been received as of year end; the commitments will be reappropriated and honored during the subsequent year.

Excess of Expenditures Over Appropriations in Budgeted Funds - The School District did not have significant expenditure budget variances.

Walled Lake Consolidated School District

Required Supplemental Information Schedule of Walled Lake Consolidated School District's Proportionate Share of the Net Pension Liability Michigan Public School Employees' Retirement System Determined as of the Plan Year Ended September 30

	2016	2015	2014
School District's proportion of the net pension liability	0.99427 %	1.00410 %	1.03039 %
School District's proportionate share of the net pension liability	\$ 248,061,578	\$ 245,250,568	\$ 226,958,421
School District's covered employee payroll	\$ 82,445,987	\$ 83,313,023	\$ 85,713,988
School District's proportionate share of the net pension liability as a percentage of its covered employee payroll	300.88 %	294.37 %	264.79 %
Plan fiduciary net position as a percentage of the total pension liability	63.01 %	62.92 %	66.20 %

Walled Lake Consolidated School District

Required Supplemental Information Schedule of Walled Lake Consolidated School District's Contributions Michigan Public School Employees' Retirement System Determined as of the Year Ended June 30

	2017	2016	2015
Statutorily required contribution	\$ 22,786,357	\$ 23,331,814	\$ 16,002,538
Contributions in relation to the statutorily required contribution	22,786,357	23,331,814	16,002,538
Contribution deficiency (excess)	-	-	-
School District's covered employee payroll	80,028,634	83,599,827	82,801,723
Contributions as a percentage of covered employee payroll	28.47 %	27.91 %	19.33 %

Notes to Pension Required Supplemental Information Schedules:

Benefit Changes - There were no changes of benefit terms in 2016.

Changes in Assumptions - There were no changes of benefit assumptions in 2016.

Other Supplemental Information

Walled Lake Consolidated School District

	Special Revenue Funds				Debt Service Funds
	Cafeteria	Community Education	Enrichment/Prime Time Care	Preschool	2011 Debt Retirement Fund
Assets					
Cash and investments	\$ 284,570	\$ -	\$ 5,067	\$ 233	\$ -
Receivables - Due from other governmental units	311,472	-	-	-	-
Due from other funds	82,627	257,820	822,161	263,050	10,763
Inventories	56,438	-	-	-	-
Restricted assets	-	-	-	-	613,822
Total assets	\$ 735,107	\$ 257,820	\$ 827,228	\$ 263,283	\$ 624,585
Liabilities and Fund Balances					
Liabilities					
Accounts payable	\$ 751	\$ 3,938	\$ 4,403	\$ -	\$ -
Due to other funds	-	-	10,572	-	-
Unearned revenue	-	66,325	37,146	7,770	-
Total liabilities	751	70,263	52,121	7,770	-
Fund Balances					
Nonspendable - Inventories	56,438	-	-	-	-
Restricted:					
Capital projects	-	-	-	-	-
Debt service	-	-	-	-	624,585
Special revenue funds - Cafeteria	677,918	-	-	-	-
Assigned:					
Community Education	-	187,557	-	-	-
Enrichment/Prime Time Care	-	-	775,107	-	-
Preschool	-	-	-	255,513	-
Total fund balances	734,356	187,557	775,107	255,513	624,585
Total liabilities and fund balances	\$ 735,107	\$ 257,820	\$ 827,228	\$ 263,283	\$ 624,585

Other Supplemental Information
Combining Balance Sheet
Nonmajor Governmental Funds
June 30, 2017

Debt Service Funds				Capital Projects Fund	Total Nonmajor Governmental Funds
2012 Debt Retirement Fund	2014 Debt Retirement Fund	2015 Debt Retirement Fund	2016 Debt Retirement Fund	Sinking Fund	
\$ -	\$ -	\$ -	\$ -	\$ -	\$ 289,870
-	-	-	-	-	311,472
3,012	-	12,112	523	5,565	1,457,633
-	-	-	-	-	56,438
174,687	391,211	703,933	34,441	2,131,461	4,049,555
\$ 177,699	\$ 391,211	\$ 716,045	\$ 34,964	\$2,137,026	\$ 6,164,968
\$ -	\$ -	\$ -	\$ -	\$ 766,923	\$ 776,015
-	(6,717)	-	-	-	3,855
-	-	-	-	-	111,241
-	(6,717)	-	-	766,923	891,111
-	-	-	-	-	56,438
-	-	-	-	1,370,103	1,370,103
177,699	397,928	716,045	34,964	-	1,951,221
-	-	-	-	-	677,918
-	-	-	-	-	187,557
-	-	-	-	-	775,107
-	-	-	-	-	255,513
177,699	397,928	716,045	34,964	1,370,103	5,273,857
\$ 177,699	\$ 391,211	\$ 716,045	\$ 34,964	\$2,137,026	\$ 6,164,968

Walled Lake Consolidated School District

	Special Revenue Funds				Debt Service Funds
	Cafeteria	Community Education	Enrichment/ Prime Time Care	Preschool	2011 Debt Retirement Fund
Revenue					
Local sources	\$ 2,795,956	\$ 776,217	\$ 1,949,623	\$ 354,738	\$ 6,475,630
State sources	172,566	-	-	-	-
Federal sources	1,752,934	-	-	-	-
Total revenue	4,721,456	776,217	1,949,623	354,738	6,475,630
Expenditures					
Current:					
Instruction	-	-	47,268	340,517	-
Support services	-	-	-	15,373	-
Food services	4,528,504	-	-	-	-
Community services	-	748,788	1,509,533	-	-
Debt service:					
Principal	-	-	-	-	5,135,000
Interest	-	-	-	-	1,438,500
Other	-	-	-	-	14,445
Capital outlay	56,323	-	-	-	-
Total expenditures	4,584,827	748,788	1,556,801	355,890	6,587,945
Excess of Revenue Over (Under) Expenditures	136,629	27,429	392,822	(1,152)	(112,315)
Other Financing Uses - Transfers out	-	-	(300,000)	-	-
Net Change in Fund Balances	136,629	27,429	92,822	(1,152)	(112,315)
Fund Balances - Beginning of year	597,727	160,128	682,285	256,665	736,900
Fund Balances - End of year	<u>\$ 734,356</u>	<u>\$ 187,557</u>	<u>\$ 775,107</u>	<u>\$ 255,513</u>	<u>\$ 624,585</u>

Other Supplemental Information
Combining Statement of Revenue, Expenditures, and
Changes in Fund Balances
Nonmajor Governmental Funds
Year Ended June 30, 2017

Debt Service Funds				Capital Projects Fund	Total Nonmajor Governmental Funds
2012 Debt Retirement Fund	2014 Debt Retirement Fund	2015 Debt Retirement Fund	2016 Debt Retirement Fund	Sinking Fund	
\$ 1,812,139	\$ 3,880,462	\$ 7,447,091	\$ 314,719	\$ 2,184,775	\$ 27,991,350
-	-	-	-	-	172,566
-	-	-	-	-	1,752,934
1,812,139	3,880,462	7,447,091	314,719	2,184,775	29,916,850
-	-	-	-	-	387,785
-	-	-	-	-	15,373
-	-	-	-	-	4,528,504
-	-	-	-	-	2,258,321
1,705,000	750,000	6,070,000	-	-	13,660,000
118,950	3,065,694	1,498,800	347,000	-	6,468,944
4,022	8,757	15,639	1,380	-	44,243
-	-	-	-	3,034,916	3,091,239
1,827,972	3,824,451	7,584,439	348,380	3,034,916	30,454,409
(15,833)	56,011	(137,348)	(33,661)	(850,141)	(537,559)
-	-	-	-	-	(300,000)
(15,833)	56,011	(137,348)	(33,661)	(850,141)	(837,559)
193,532	341,917	853,393	68,625	2,220,244	6,111,416
\$ 177,699	\$ 397,928	\$ 716,045	\$ 34,964	\$ 1,370,103	\$ 5,273,857

Walled Lake Consolidated School District

Other Supplemental Information Budgetary Comparison Schedule Special Revenue Fund - Cafeteria Fund Year Ended June 30, 2017

	<u>Original Budget</u>	<u>Final Budget</u>	<u>Actual</u>
Revenue			
Local sources	\$ 2,765,300	\$ 2,790,000	\$ 2,795,956
State sources	183,000	175,000	172,566
Federal sources	<u>1,667,000</u>	<u>1,690,000</u>	<u>1,752,934</u>
Total revenue	4,615,300	4,655,000	4,721,456
Expenditures - Food services	<u>4,544,351</u>	<u>4,700,127</u>	<u>4,584,827</u>
Net Change in Fund Balance	70,949	(45,127)	136,629
Fund Balance - Beginning of year	<u>597,727</u>	<u>597,727</u>	<u>597,727</u>
Fund Balance - End of year	<u><u>\$ 668,676</u></u>	<u><u>\$ 552,600</u></u>	<u><u>\$ 734,356</u></u>

Walled Lake Consolidated School District

	Original Budget	Final Budget	2011 Debt Retirement Fund
Revenue - Local			
Property taxes	\$ 20,448,328	\$ 19,878,833	\$ 6,467,157
Interest and other	<u>20,000</u>	<u>19,800</u>	<u>8,473</u>
Total revenue	20,468,328	19,898,633	6,475,630
Expenditures - Debt service			
Principal	13,660,000	13,660,000	5,135,000
Interest	6,468,944	6,468,944	1,438,500
Other	<u>28,750</u>	<u>33,750</u>	<u>14,445</u>
Total expenditures	<u>20,157,694</u>	<u>20,162,694</u>	<u>6,587,945</u>
Excess of Revenue Over (Under)			
Expenditures	<u>310,634</u>	<u>(264,061)</u>	<u>(112,315)</u>
Net Change in Fund Balances	310,634	(264,061)	(112,315)
Fund Balances - July 1, 2016	<u>2,194,367</u>	<u>2,194,367</u>	<u>736,900</u>
Fund Balances - June 30, 2017	<u>\$ 2,505,001</u>	<u>\$ 1,930,306</u>	<u>\$ 624,585</u>

Other Supplemental Information
Budgetary Comparison Schedule - Debt Service Funds
Year Ended June 30, 2017

2012 Debt Retirement Fund	2014 Debt Retirement Fund	2015 Debt Retirement Fund	2016 Debt Retirement Fund	Total
\$ 1,809,768	\$ 3,875,384	\$ 7,437,310	\$ 314,304	\$ 19,903,923
2,371	5,078	9,781	415	26,118
1,812,139	3,880,462	7,447,091	314,719	19,930,041
1,705,000	750,000	6,070,000	-	13,660,000
118,950	3,065,694	1,498,800	347,000	6,468,944
4,022	8,757	15,639	1,380	44,243
1,827,972	3,824,451	7,584,439	348,380	20,173,187
(15,833)	56,011	(137,348)	(33,661)	(243,146)
(15,833)	56,011	(137,348)	(33,661)	(243,146)
193,532	341,917	853,393	68,625	2,194,367
<u>\$ 177,699</u>	<u>\$ 397,928</u>	<u>\$ 716,045</u>	<u>\$ 34,964</u>	<u>\$ 1,951,221</u>

Walled Lake Consolidated School District

Other Supplemental Information Budgetary Comparison Schedule - Capital Projects Funds Year Ended June 30, 2017

	Original Budget	Final Budget	2014 Bond Issue	Sinking Fund	Total
Revenue - Local					
Property taxes	\$ 2,210,300	\$ 2,176,000	\$ -	\$ 2,180,456	\$ 2,180,456
Interest income	53,000	288,000	289,432	4,319	293,751
Total revenue	2,263,300	2,464,000	289,432	2,184,775	2,474,207
Expenditures - Capital outlay	12,132,449	14,950,374	11,244,471	3,034,916	14,279,387
Net Change in Fund Balances	(9,869,149)	(12,486,374)	(10,955,039)	(850,141)	(11,805,180)
Fund Balances - July 1, 2016	21,008,858	21,008,858	18,788,614	2,220,244	21,008,858
Fund Balances - June 30, 2017	<u>\$ 11,139,709</u>	<u>\$ 8,522,484</u>	<u>\$ 7,833,575</u>	<u>\$ 1,370,103</u>	<u>\$ 9,203,678</u>

Walled Lake Consolidated School District

Other Supplemental Information Budgetary Comparison Schedule - Other Special Revenue Funds Year Ended June 30, 2017

	Original Budget	Final Budget	Community Education	Enrichment/ Prime Time Care	Preschool	Total
Revenue - Local	\$ 2,927,455	\$ 2,905,550	\$ 776,217	\$ 1,949,623	\$ 354,738	\$ 3,080,578
Expenditures						
Instruction	409,125	398,718	-	47,268	340,517	387,785
Support services	12,923	14,400	-	-	15,373	15,373
Community services	<u>2,103,961</u>	<u>2,218,961</u>	<u>748,788</u>	<u>1,509,533</u>	<u>-</u>	<u>2,258,321</u>
Total expenditures	<u>2,526,009</u>	<u>2,632,079</u>	<u>748,788</u>	<u>1,556,801</u>	<u>355,890</u>	<u>2,661,479</u>
Excess of Revenue Over (Under)						
Expenditures	401,446	273,471	27,429	392,822	(1,152)	419,099
Other Financing Uses - Transfers out	<u>(300,000)</u>	<u>(300,000)</u>	<u>-</u>	<u>(300,000)</u>	<u>-</u>	<u>(300,000)</u>
Net Change in Fund Balances	101,446	(26,529)	27,429	92,822	(1,152)	119,099
Fund Balances - July 1, 2016	<u>1,099,078</u>	<u>1,099,078</u>	<u>160,128</u>	<u>682,285</u>	<u>256,665</u>	<u>1,099,078</u>
Fund Balances - June 30, 2017	<u>\$ 1,200,524</u>	<u>\$ 1,072,549</u>	<u>\$ 187,557</u>	<u>\$ 775,107</u>	<u>\$ 255,513</u>	<u>\$ 1,218,177</u>

Walled Lake Consolidated School District

Other Supplemental Information Statement of Changes in Fiduciary Assets and Liabilities Student Activities (Agency) Fund Year Ended June 30, 2017

	July 1, 2016	Additions	Deletions	June 30, 2017
Assets				
Cash and investments	\$ 2,216,428	\$ 3,056,270	\$ 3,792,053	\$ 1,480,645
Due from other funds	-	2,701,687	2,221,533	480,154
Accounts receivable	3,338	397	-	3,735
Total assets	<u>\$ 2,219,766</u>	<u>\$ 5,758,354</u>	<u>\$ 6,013,586</u>	<u>\$ 1,964,534</u>
Liabilities				
Accounts payable	\$ 29,089	\$ 2,317,756	\$ 2,346,845	\$ -
Due to other funds	19,840	2,701,687	2,721,527	-
Due to student groups	2,170,837	1,942,154	2,148,457	1,964,534
Total liabilities	<u>\$ 2,219,766</u>	<u>\$ 6,961,597</u>	<u>\$ 7,216,829</u>	<u>\$ 1,964,534</u>

Walled Lake Consolidated School District

Other Supplemental Information Schedule of Bonded Indebtedness June 30, 2017

	2011 Debt Retirement Fund Principal	2012 Debt Retirement Fund Principal	2014 Debt Retirement Fund Principal	2015 Debt Retirement Fund Principal	2016 Debt Retirement Fund Principal
June 30					
2018	\$ 5,075,000	\$ 1,670,000	\$ 1,075,000	\$ 6,020,000	\$ -
2019	5,000,000	590,000	1,155,000	4,160,000	1,010,000
2020	4,935,000	-	1,305,000	4,635,000	1,575,000
2021	4,890,000	-	1,430,000	5,170,000	1,555,000
2022	4,845,000	-	1,555,000	5,135,000	1,535,000
2023	-	-	1,680,000	-	1,510,000
2024	-	-	1,805,000	-	1,490,000
2025	-	-	1,890,000	-	-
2026	-	-	1,980,000	-	-
2027	-	-	2,075,000	-	-
2028	-	-	2,175,000	-	-
2029	-	-	2,280,000	-	-
2030	-	-	2,385,000	-	-
2031	-	-	2,480,000	-	-
2032	-	-	2,580,000	-	-
2033	-	-	2,690,000	-	-
2034	-	-	2,800,000	-	-
2035	-	-	2,925,000	-	-
2036	-	-	3,050,000	-	-
2037	-	-	3,200,000	-	-
2038	-	-	3,350,000	-	-
2039	-	-	3,500,000	-	-
2040	-	-	3,670,000	-	-
2041	-	-	3,820,000	-	-
2042	-	-	3,995,000	-	-
2043	-	-	4,160,000	-	-
Total principal	\$ 24,745,000	\$ 2,260,000	\$ 65,010,000	\$ 25,120,000	\$ 8,675,000
Principal payments due	May 1	May 1	May 1	May 1	May 1
Interest payments due	November 1 and May 1	November 1 and May 1	November 1 and May 1	November 1 and May 1	November 1 and May 1
Interest rate	5.0%	3.0%	2.0% to 5.0%	5.0%	4.0%
Original issue	\$ 49,485,000	\$ 7,225,000	\$ 65,760,000	\$ 37,280,000	\$ 8,675,000

Statistical and Other Information (Unaudited)

Walled Lake Consolidated School District

Note to Statistical Section

This part of the School District's Comprehensive Annual Financial Report represents detailed information as a context for understanding what the information in the financial statements, note disclosures, and required supplemental information says about the School District's overall financial health.

<u>Contents</u>	<u>Page</u>
Notes to Statistical Section	61
Financial Trends These schedules contain trend information to help the reader understand how the School District's financial performance and well-being have changed over time.	62-69
Revenue Capacity These schedules contain information to help the reader assess the School District's most significant local revenue source, the property tax.	70-75
Debt Capacity These schedules present information to help the reader assess the affordability of the School District's current levels of outstanding debt and the School District's ability to issue additional debt in the future.	76-80
Demographic and Economic Information These schedules offer demographic and economic indicators to help the reader understand how the environment within which the School District's financial activities take place.	81-82
Operating Information These schedules contain service and infrastructure data to help the reader understand how the information in the School District's financial report relates to the services the School District provides and the activities it performs.	83-87

Sources: Unless otherwise noted, the information in these schedules is derived from the Comprehensive Annual Financial Reports for the relevant year.

Walled Lake Consolidated School District

	June 30				
	2008	2009	2010	2011	2012
Net investment in capital assets	\$ 63,840,781	\$ 70,436,461	\$ 78,597,866	\$ 86,969,472	\$ 88,054,915
Restricted	4,861,996	7,870,816	7,816,605	9,722,571	6,177,408
Unrestricted (deficit)	<u>17,988,752</u>	<u>15,587,457</u>	<u>7,480,444</u>	<u>9,123,027</u>	<u>11,741,528</u>
Total primary government net position	<u>\$ 86,691,529</u>	<u>\$ 93,894,734</u>	<u>\$ 93,894,915</u>	<u>\$ 105,815,070</u>	<u>\$ 105,973,851</u>

Source: Walled Lake Consolidated School District audited financial reports

**Net Position by Component - Governmental Activities
Last Ten Fiscal Years**

June 30				
2013	2014	2015	2016	2017
\$ 96,189,270	\$ 101,263,607	\$ 112,593,950	\$ 119,986,715	\$ 126,880,952
3,154,756	2,959,142	4,275,460	3,639,543	2,802,753
6,286,257	4,318,342	(225,046,502)	(225,633,550)	(223,021,213)
<u>\$ 105,630,283</u>	<u>\$ 108,541,091</u>	<u>\$ (108,177,092)</u>	<u>\$ (102,007,292)</u>	<u>\$ (93,337,508)</u>

Walled Lake Consolidated School District

	Year Ended June 30				
	2008	2009	2010	2011	2012
Expenses					
Governmental activities:					
Instruction	\$ 100,854,553	\$ 104,535,249	\$ 105,018,664	\$ 100,163,446	\$ 101,594,912
Support services	61,907,279	62,119,063	60,620,168	52,854,685	49,697,572
Food services	3,601,168	3,960,706	4,290,084	4,249,872	4,916,724
Athletics	2,150,836	2,241,657	2,216,454	2,278,273	2,035,880
Community services	3,092,267	2,651,671	2,523,598	2,463,324	2,509,976
Interest on long-term debt	9,224,294	8,741,446	8,238,805	7,143,803	6,734,473
Bond issue costs	46,488	46,488	46,488	-	-
Depreciation (unallocated)	4,968,183	5,051,827	5,041,823	5,109,730	5,121,973
Total governmental activities	185,845,068	189,348,107	187,996,084	174,263,133	172,611,510
Revenue					
Program revenue:					
Charges for services:					
Instruction	1,335,342	1,393,707	1,474,493	1,248,008	1,237,856
Food services	2,827,664	2,779,498	2,678,838	2,683,055	2,785,577
Athletics	570,806	609,164	624,473	1,025,578	975,719
Community services	3,402,544	2,782,575	2,524,658	2,730,580	2,956,392
Total charges for services	8,136,356	7,564,944	7,302,462	7,687,221	7,955,544
Operating grants and contributions	25,337,260	30,221,946	27,736,092	27,186,624	24,665,309
Total program revenue	33,473,616	37,786,890	35,038,554	34,873,845	32,620,853
Net expenses	(152,371,452)	(151,561,217)	(152,957,530)	(139,389,288)	(139,990,657)
General revenue:					
Property taxes	64,601,815	61,288,223	58,671,069	52,777,238	49,690,052
State aid not restricted to specific purposes	96,516,761	95,789,282	88,522,345	93,476,653	95,420,636
Federal sources - Unrestricted	-	-	4,405,614	3,081,354	521,706
Investment earnings	1,524,534	462,413	141,429	218,178	91,112
Impairment loss on capital assets	-	-	-	-	(6,817,429)
Other	280,397	1,218,896	1,217,254	1,756,020	1,243,361
Total general revenue	162,923,507	158,758,814	152,957,711	151,309,443	140,149,438
Special Item	106,666	5,608	-	-	-
Change in Net Position	\$ 10,658,721	\$ 7,203,205	\$ 181	\$ 11,920,155	\$ 158,781

Source: Walled Lake Consolidated School District audited financial reports

Changes in Governmental Net Position Last Ten Fiscal Years

Year Ended June 30				
2013	2014	2015	2016	2017
\$ 104,389,365	\$ 107,010,793	\$ 106,521,966	\$ 107,603,402	\$ 115,616,026
51,537,413	51,105,237	47,940,978	51,722,421	45,884,136
4,764,522	4,548,076	4,578,375	4,439,903	2,024,932
2,072,852	2,062,931	2,080,438	1,963,754	4,551,780
2,784,067	2,732,534	2,913,475	2,276,017	2,465,524
6,049,847	6,778,907	7,081,855	7,182,909	6,422,279
-	-	333,462	159,092	-
4,802,801	4,729,612	4,786,616	423,764	507,285
176,400,867	178,968,090	176,237,165	175,771,262	177,471,962
1,309,159	1,079,131	1,081,330	1,146,573	1,157,423
2,586,801	2,550,535	2,551,247	2,802,258	2,795,956
1,014,774	983,085	1,121,312	1,094,055	1,059,620
3,095,110	3,107,912	3,259,891	3,376,808	3,454,063
8,005,844	7,720,663	8,013,780	8,419,694	8,467,062
26,784,732	28,869,010	34,650,059	29,713,750	37,016,056
34,790,576	36,589,673	42,663,839	38,133,444	45,483,118
(141,610,291)	(142,378,417)	(133,573,326)	(137,637,818)	(131,988,844)
46,170,202	49,929,153	52,608,644	52,398,995	52,396,812
94,070,693	94,001,551	90,391,265	87,522,822	86,388,154
82,661	-	-	-	-
61,028	145,773	3,224,279	1,316,493	1,011,197
-	-	-	-	-
882,139	1,212,748	815,942	2,569,308	862,465
141,266,723	145,289,225	147,040,130	143,807,618	140,658,628
-	-	-	-	-
\$ (343,568)	\$ 2,910,808	\$ 13,466,804	\$ 6,169,800	\$ 8,669,784

Walled Lake Consolidated School District

	June 30			
	2008	2009	2010	2011
General Fund				
Reserved	\$ 910,337	\$ 1,652,623	\$ 854,323	\$ -
Unreserved	15,461,308	13,771,883	7,494,023	-
Nonspendable:				
Inventories	-	-	-	267,650
Prepaid costs	-	-	-	989,659
Restricted	-	-	-	-
Committed	-	-	-	-
Assigned	-	-	-	5,364,337
Unassigned	-	-	-	6,191,991
	<u>-</u>	<u>-</u>	<u>-</u>	<u>6,191,991</u>
Total General Fund	<u>\$ 16,371,645</u>	<u>\$ 15,424,506</u>	<u>\$ 8,348,346</u>	<u>\$ 12,813,637</u>
All Other Governmental Funds				
Reserved	\$ 9,179,780	\$ 11,457,831	\$ 12,227,110	\$ -
Unreserved - Reported in:				
Special revenue funds	2,120,485	1,755,523	1,584,360	-
Capital projects funds	4,153,202	4,683,819	195,266	-
Debt service funds	-	-	-	-
Nonspendable - Inventories	-	-	-	43,855
Restricted:				
Capital projects	-	-	-	3,764,976
Debt service	-	-	-	5,690,820
Special revenue funds - Cafeteria	-	-	-	1,190,635
Committed:				
Community education	-	-	-	105,563
Enrichment/Prime Time Care	-	-	-	400,785
Preschool	-	-	-	162,157
Assigned	-	-	-	-
Unassigned	-	-	-	-
	<u>-</u>	<u>-</u>	<u>-</u>	<u>-</u>
Total all other governmental funds	<u>\$ 15,453,467</u>	<u>\$ 17,897,173</u>	<u>\$ 14,006,736</u>	<u>\$ 11,358,791</u>

Source: Walled Lake Consolidated School District's books and records

Fund Balances - Governmental Funds Last Ten Fiscal Years

June 30					
2012	2013	2014	2015	2016	2017
\$ -	\$ -	\$ -	\$ -	\$ -	\$ -
-	-	-	-	-	-
288,778	169,573	21,785	26,522	33,071	20,294
440,906	331,430	217,377	492,919	260,946	800,278
-	-	-	-	-	-
-	-	-	-	-	-
6,301,054	3,548,618	-	-	-	-
9,000,621	7,168,551	8,144,167	8,953,451	9,448,029	10,785,962
<u>\$ 16,031,359</u>	<u>\$ 11,218,172</u>	<u>\$ 8,383,329</u>	<u>\$ 9,472,892</u>	<u>\$ 9,742,046</u>	<u>\$ 11,606,534</u>
\$ -	\$ -	\$ -	\$ -	\$ -	\$ -
-	-	-	-	-	-
-	-	-	-	-	-
-	-	-	-	-	-
47,923	51,715	50,765	57,140	57,225	56,438
3,299,187	2,518,036	63,052,921	41,960,481	21,008,858	9,203,678
2,679,701	25,001	1,660,836	2,344,845	2,194,367	1,951,221
955,198	585,005	464,075	329,886	540,502	677,918
106,283	158,053	213,615	148,101	160,128	187,557
472,155	635,038	418,754	452,572	682,285	775,107
183,338	185,648	225,400	282,784	256,665	255,513
-	-	-	-	-	-
-	-	-	-	-	-
<u>\$ 7,743,785</u>	<u>\$ 4,158,496</u>	<u>\$ 66,086,366</u>	<u>\$ 45,575,809</u>	<u>\$ 24,900,030</u>	<u>\$ 13,107,432</u>

Walled Lake Consolidated School District

	Year Ended June 30			
	2008	2009	2010	2011
Revenue				
Local revenue	\$ 74,676,296	\$ 70,196,046	\$ 67,272,273	\$ 62,339,100
State revenue	106,173,131	104,401,044	96,885,961	102,745,056
Federal revenue	5,890,090	11,761,004	13,557,430	11,229,618
Interdistrict revenue	9,799,135	9,647,722	9,949,328	9,103,625
Total revenue	196,538,652	196,005,816	187,664,992	185,417,399
Expenditures				
Current:				
Instruction	98,699,135	101,548,563	102,985,379	99,073,307
Support services	61,357,566	60,758,296	60,298,536	52,718,235
Community services	3,092,267	2,651,671	2,523,598	2,463,324
Food services	3,601,168	3,960,706	4,290,084	4,249,872
Athletics	2,150,836	2,241,657	2,216,454	2,278,273
Debt service:				
Principal	12,626,000	11,585,000	11,820,000	12,205,000
Interest and other	9,311,404	8,824,319	8,323,398	7,139,061
Capital outlay	8,761,368	2,954,805	6,203,098	3,005,187
Total expenditures	199,599,744	194,525,017	198,660,547	183,132,259
Excess of Revenue (Under) Over Expenditures	(3,061,092)	1,480,799	(10,995,555)	2,285,140
Other Financing Sources (Uses)				
Debt issuance	-	-	-	-
Debt premium or discount	-	-	-	2,557,866
Sale of capital assets	132,633	15,768	28,958	30,324
Transfers in	1,580,030	1,956,815	91,138	1,863,000
Transfers out	(1,580,030)	(1,956,815)	(91,138)	(1,863,000)
Proceeds of refunding bond	-	-	-	49,485,000
Payment to refunded bond escrow agent	-	-	-	(52,540,984)
Total other financing sources (uses)	132,633	15,768	28,958	(467,794)
Net Change in Fund Balances	(2,928,459)	1,496,567	(10,966,597)	1,817,346
Fund Balances - Beginning of year	34,753,571	31,825,112	33,321,679	22,355,082
Fund Balances - End of year	\$ 31,825,112	\$ 33,321,679	\$ 22,355,082	\$ 24,172,428
Debt service as a percentage of noncapital expenditures	11.48%	10.65%	10.45%	10.74%

Source: Walled Lake Consolidated School District's books and records

Changes in Fund Balances - Governmental Funds Last Ten Fiscal Years

Year Ended June 30					
2012	2013	2014	2015	2016	2017
\$ 58,638,432	\$ 55,099,205	\$ 58,146,973	\$ 61,724,713	\$ 61,937,817	\$ 62,206,709
103,794,824	106,149,289	107,558,674	108,024,710	107,142,867	107,585,736
8,159,222	7,144,990	7,230,850	7,206,584	6,871,553	7,134,815
8,972,263	7,529,134	7,812,806	9,553,161	9,560,384	9,509,147
179,564,741	175,922,618	180,749,303	186,509,168	185,512,621	186,436,407
99,444,924	102,680,760	104,928,273	104,408,146	105,031,324	103,169,910
49,216,638	50,314,478	49,313,437	48,271,232	49,858,318	49,129,485
2,509,976	2,784,067	2,732,534	2,077,919	2,329,028	2,473,098
4,916,724	4,633,140	4,548,076	4,570,626	4,512,121	4,528,504
2,035,880	2,072,852	2,062,931	2,914,069	1,991,553	2,018,161
12,655,000	12,510,000	11,800,000	12,385,000	13,145,000	13,660,000
6,672,352	5,914,608	6,655,570	7,603,976	7,116,994	6,513,187
2,510,531	3,383,211	8,037,341	23,733,715	23,984,524	14,911,867
179,962,025	184,293,116	190,078,162	205,964,683	207,968,862	196,404,212
(397,284)	(8,370,498)	(9,328,859)	(19,455,515)	(22,456,241)	(9,967,805)
-	-	65,760,000	-	-	-
-	461,790	2,000,346	4,288,643	1,031,829	-
-	72,030	661,540	233,633	2,017,530	39,695
1,936,374	1,608,127	1,995,377	2,235,998	412,409	300,000
(1,936,374)	(1,608,127)	(1,995,377)	(2,235,998)	(412,409)	(300,000)
-	7,225,000	-	37,280,000	8,675,000	-
-	(7,786,798)	-	(41,767,755)	(9,674,743)	-
-	(27,978)	68,421,886	34,521	2,049,616	39,695
(397,284)	(8,398,476)	59,093,027	(19,420,994)	(20,406,625)	(9,928,110)
24,172,428	23,775,144	15,376,668	74,469,695	55,048,701	34,642,076
\$ 23,775,144	\$ 15,376,668	\$ 74,469,695	\$ 55,048,701	\$ 34,642,076	\$ 24,713,966
10.89%	10.14%	10.05%	11.02%	10.95%	11.05%

Walled Lake Consolidated School District

Taxable Value by Property Type

Real Property

Tax Year	Residential	Commercial	Industrial	Agricultural and Other	Personal Property	Total Value
2008	\$ 3,988,659,349	\$ 696,134,860	\$ 423,402,560	\$ 179,260	\$ 332,627,270	\$ 5,441,003,299
2009	3,937,865,040	730,829,590	433,742,160	625,740	280,308,810	5,383,371,340
2010	3,629,338,350	769,454,490	438,273,050	653,260	277,218,300	5,114,937,450
2011	3,114,970,060	720,211,930	384,339,710	651,290	265,377,510	4,485,550,500
2012	2,903,284,640	874,551,470	137,896,900	662,340	266,973,210	4,183,368,560
2013	2,845,641,240	804,757,380	119,051,070	680,210	277,019,440	4,047,149,340
2014	2,891,374,620	764,670,870	110,121,080	586,590	298,882,180	4,065,635,340
2015	2,980,696,150	777,318,350	106,436,100	507,170	283,208,710	4,148,166,480
2016	3,099,243,530	800,578,120	105,386,790	516,780	301,417,450	4,307,142,670
2017	3,187,085,000	816,328,300	107,643,910	548,320	265,916,310	4,374,861,000

Note: Under Michigan law, the revenue base is taxable value. Taxes levied in a particular "tax year" become revenue of the subsequent fiscal year.

Source: Michigan Department of Treasury L-4029

**Taxable Value and Actual Value of Taxable Property
Last Ten Fiscal Years**

Tax Rate (Mills)	Tax Rate (Mills)	Estimated Actual Value	Taxable Value as a Percent of Actual
Homestead	Nonhomestead		
6.6700	22.7900	\$ 10,882,006,598	50.00
6.5722	22.7900	10,766,742,680	50.00
6.4793	22.5000	10,229,874,900	50.00
6.7508	22.5000	8,971,101,000	50.00
6.8812	22.5000	8,366,737,120	50.00
7.0254	22.5600	8,094,298,680	50.00
7.4730	23.1445	8,131,270,680	50.00
7.6843	23.4872	8,296,332,960	50.00
7.2841	23.1180	8,614,285,340	50.00
7.0150	22.9279	8,749,722,000	50.00

Walled Lake Consolidated School District

Direct and overlapping property tax rates

		Millage Rates - Direct School District Taxes											
		Operating						Total Direct Taxes					
		Homestead						Homestead					
Tax Year	Year Ended June 30	Commercial Personal	Industrial Personal	Other **	Non-Homestead	Debt*	Sinking Fund*	Commercial Personal	Industrial Personal	Other **	Non-homestead	County	Community College
2007	2008	-	-	1.88000	18.00000	4.29000	0.50000	-	-	6.67000	22.79000	4.19000	1.58440
2008	2009	7.7822	1.7822	1.78220	18.00000	4.29000	0.50000	12.57220	6.57220	6.57220	22.79000	4.19000	1.58440
2009	2010	7.9793	1.9793	1.97930	18.00000	4.00000	0.50000	12.47930	6.47930	6.47930	22.50000	4.19000	1.58440
2010	2011	8.2508	2.2508	2.25080	18.00000	4.00000	0.50000	12.75080	6.75080	6.75080	22.50000	4.19000	1.58440
2011	2012	8.3812	2.3812	2.38120	18.00000	4.00000	0.50000	12.88120	6.88120	6.88120	22.50000	4.19000	1.58440
2012	2013	8.4654	2.4654	2.46540	18.00000	4.06000	0.50000	13.02540	7.02540	7.02540	22.56000	4.19000	1.58440
2013	2014	8.3285	2.3285	2.32850	18.00000	4.64450	0.50000	13.47300	7.47300	7.47300	23.14450	4.19000	1.58440
2014	2015	8.1971	2.1971	2.19710	18.00000	4.98720	0.50000	13.68430	7.68430	7.68430	23.48720	4.19000	1.58440
2015	2016	8.0869	2.1265	2.12650	17.96040	4.65910	0.49850	13.24450	7.28410	7.28410	23.11800	4.09000	1.58190
2016	2017	7.8965	1.9918	1.99180	17.90470	4.52790	0.49530	12.91970	7.01500	7.01500	22.92790	4.04000	1.57070

* Debt and sinking fund millages apply to homestead and nonhomestead property

** Beginning in 2008/2009, classification of property by the State was changed. Other homestead for tax years 1999 through 2007 include the traditional homestead millage prior to the change. For all tax years beginning with 2008, other homestead includes principal residences, qualified agricultural, and qualified forest properties.

Source: Walled Lake Consolidated School District's books and records

Direct and Overlapping Property Tax Rates Last Ten Fiscal Years

Intermediate School District	State Education	City of Walled Lake	City of Farmington Hills	City of Novi	City of Orchard Lake	City of Wixom	Village of Wolverine Lake	Township of Commerce	Township of West Bloomfield	Township of White Lake
3.36900	6.00000	17.89910	11.60720	10.54160	8.62600	11.73640	9.57300	4.53060	8.99940	6.26520
3.36900	6.00000	17.89910	11.60720	10.54160	8.49500	11.63140	9.57300	4.53060	8.99940	6.58760
3.36900	6.00000	17.89910	11.60720	10.54160	8.44500	11.93140	9.57300	4.53060	8.97740	6.58760
3.36900	6.00000	17.73470	11.60720	10.54160	9.48300	12.74230	9.57300	4.53060	9.00740	9.11160
3.36900	6.00000	17.73470	12.20360	10.54160	10.23000	12.74230	9.57300	4.53060	11.93470	8.81160
3.36900	6.00000	17.73470	13.93620	10.20000	8.82000	13.32590	9.57300	3.48730	12.25370	8.85900
3.36900	6.00000	17.73470	13.93940	10.20000	7.36000	16.79290	9.57300	3.48730	12.25500	8.85900
3.36900	6.00000	17.73470	13.96620	10.20000	7.86000	15.92290	9.57300	3.09340	12.23800	9.85900
3.36330	6.00000	21.50240	15.97640	10.20000	7.86000	15.36290	9.57300	3.08710	12.21120	9.81330
3.33980	6.00000	21.22270	15.90540	9.95000	7.83320	15.31890	9.57300	3.08730	12.16650	9.72160

Walled Lake Consolidated School District

Principal Property Taxpayers

	2017 Taxable Value	Rank	Percentage of Total	2008 Taxable Value		Percentage of Total
DTE Electric Company	\$ 40,285,290	1	0.92	\$ 14,689,880	-	0.27
Fox Run Village	42,735,960	2	0.98	45,609,890	1	0.84
VHS Huron Valley - Sinai Hospital	30,209,100	3	0.69	-	-	-
Oakland Management Company	25,175,290	4	0.58	18,190,900	7	0.33
Occidental Development	23,766,340	5	0.54	34,082,980	3	0.63
Allerion Associated	23,236,350	6	0.53	29,584,940	5	0.54
ITC Transmission	17,948,030	7	0.41	-	-	-
Silverbrooke Villa	17,603,530	8	0.40	16,845,440	8	0.31
Edward Rose & Sons	12,316,570	9	0.28	-	-	-
Consumers Energy	12,284,400	10	0.28	-	-	-
Singh/Singh of Brandywine	-	-	-	43,749,470	2	0.80
PB & Associates	-	-	-	8,663,880	10	0.16
Haggerty Corridor Partnership	-	-	-	31,356,560	4	0.58
MI Developments America, Inc.	-	-	-	19,080,480	6	0.35
All others	4,129,300,140		94.39	5,179,148,879	-	95.19
Total taxable value	\$ 4,374,861,000		100.00	\$ 5,441,003,299		100.00

Source: 2017 TV figures - - Public Financial Management, Inc. (PFM) - Municipal Disclosure Annual Filing dated November 16, 2016

Source: 2008 TV figures - - Public Financial Management, Inc. (PFM) - Municipal Disclosure Annual Filing dated October 19, 2007

Walled Lake Consolidated School District

Property Tax Levies and Collections Last Ten Fiscal Years

Tax Year	Year Ended June 30	Total Levy	Current Collections	Percent Collected	Delinquent Collections	Total Tax Collections	Percent of Levy Collected
2007	2008	\$ 65,113,391	\$ 64,739,216	99.43	\$ 79,048	\$ 64,818,264	99.55
2008	2009	61,630,269	61,445,043	99.70	29,057	61,474,100	99.75
2009	2010	59,458,458	59,271,854	99.69	24,640	59,296,494	99.73
2010	2011	53,763,428	53,612,828	99.72	14,786	53,627,614	99.75
2011	2012	50,254,873	50,081,701	99.66	44,023	50,125,724	99.74
2012	2013	48,270,412	47,622,746	98.66	48,549	47,671,295	98.76
2013	2014	50,792,720	50,219,982	98.87	6,438	50,226,420	98.89
2014	2015	52,886,331	52,530,515	99.33	51,740	52,582,255	99.43
2015	2016	53,077,410	52,535,714	98.98	8,646	52,544,360	99.00
2016	2017	53,428,462	52,529,848	98.32	-	52,529,848	98.32

Source: Walled Lake Consolidated School District's books and records

Walled Lake Consolidated School District

Fiscal Year	General Obligation Bonds	Less Pledged Debt Service Funds	Net General Bonded Debt	Other General Obligation Debt *	Total General Obligation Debt	Taxable Value
2008	\$ 177,690,000	\$ 4,861,996	\$ 172,828,004	\$ 9,754,669	\$ 182,582,673	\$ 5,441,003,299
2009	166,105,000	7,870,816	158,234,184	11,251,268	169,485,452	5,383,371,340
2010	154,285,000	7,826,647	146,458,353	9,945,496	156,403,849	5,114,937,450
2011	140,345,000	5,690,820	134,654,180	9,223,304	143,877,484	4,485,550,500
2012	127,690,000	2,679,701	125,010,299	8,997,820	134,008,119	4,183,368,560
2013	115,325,000	25,001	115,299,999	8,490,501	123,790,500	4,047,149,340
2014	169,285,000	1,660,836	167,624,164	10,990,207	178,614,371	4,065,635,340
2015	153,430,000	2,344,845	151,085,155	10,232,708	161,317,863	4,148,166,480
2016	139,470,000	2,194,367	137,275,633	10,823,714	148,099,347	4,307,142,670
2017	125,810,000	1,951,221	123,858,779	9,691,670	133,550,449	4,374,861,000

Sources: Walled Lake Consolidated School District's books and records, U.S. Census Bureau

* Other general obligation debt includes compensated absences, bond premium, deferred charges, and other debt as indicated in the notes to financial statements.

Ratios of General Bonded Debt Outstanding Last Ten Fiscal Years

Net General Bonded Debt as a Percentage of Taxable Value	Total Debt as a Percentage of Taxable Value	Population	Net General Bonded Debt per Capita	Total Debt per Capita	Total Outstanding Debt to Personal Income
3.18	3.36	88,669	\$ 1,949	\$ 2,059	\$ 2,949
2.94	3.15	88,669	1,785	1,911	2,738
2.86	3.06	88,669	1,652	1,764	2,526
3.00	3.21	89,871	1,519	1,623	2,297
2.99	3.20	89,871	1,391	1,491	2,018
2.85	3.06	99,771	1,156	1,241	1,865
4.12	4.39	93,591	1,791	1,908	2,690
3.64	3.89	93,591	1,614	1,724	2,458
3.19	3.44	99,771	1,376	1,484	2,229
2.83	3.05	101,707	1,218	1,313	1,928

Walled Lake Consolidated School District

Direct and Overlapping Governmental Activities Debt June 30, 2017

Governmental Unit	Debt Outstanding	Estimated Percent Applicable	Estimated Share of Overlapping Debt
City of Walled Lake	\$ 1,125,000	100.00	\$ 1,125,000
City of Farmington Hills	55,185,005	4.49	2,477,807
City of Novi	24,130,000	17.45	4,210,685
City of Orchard Lake	1,179,360	11.10	130,909
City of Wixom	8,434,000	93.73	7,905,188
Total	90,053,365		15,849,589
Township of Commerce	108,100,000	83.32	90,068,920
Township of West Bloomfield	53,531,971	30.47	16,311,191
Township of White Lake	3,215,000	25.64	824,326
Total	164,846,971		107,204,437
Village of Wolverine Lake	1,420,000	100.00	1,420,000
Oakland County	372,198,081	8.29	30,855,221
Oakland County Intermediate Schools	45,495,000	8.32	3,785,184
Oakland Community College	820,000	8.35	68,470
Total	418,513,081		34,708,875
Total overlapping debt	<u>\$ 674,833,417</u>		159,182,901
Direct district debt			<u>125,810,000</u>
Total direct and overlapping debt			<u><u>\$ 284,992,901</u></u>

Source: Municipal Advisory Council of Michigan

Note: The method used to compute the overlapping debt percentages is Walled Lake Community School District taxable value in each community compared to that community's total taxable value.

Walled Lake Consolidated School District

	2008	2009	2010	2011
Calculation of Debt Limit				
State equalized valuation (SEV)	\$ 6,352,631,239	\$ 6,061,220,590	\$ 5,484,970,235	\$ 4,672,882,380
15% of SEV*	952,894,686	909,183,089	822,745,535	700,932,357
Calculation of Debt Subject to Limit				
Total debt	177,690,000	166,105,000	154,285,000	140,345,000
Less debt not subject to limit - State qualified debt issuance	(177,455,000)	(166,105,000)	(154,285,000)	(140,345,000)
Net Debt Subject to Limit	235,000	-	-	-
Legal Debt Margin	952,659,686	909,183,089	822,745,535	700,932,357
Net Debt Subject to Limit as Percent of Debt Limit	0.02%	0.00%	0.00%	0.00%

* Public Act No. 451 of Michigan 1976, Section 1351A provides debt limits as follows: The bonded indebtedness of a school district shall not exceed 15 percent of all assessed valuation of the district. Bonds not included in the computation of the legal debt margin are:

1. Refunding bonds
2. Any bond qualified under Article IX, Section 16 of the 1963 Michigan Constitution
3. Deficit budget bonds as authorized by Section 1356

Source: Walled Lake Consolidated School District's books and records, Oakland County Equalization "Baseline Taxable Values by School and Use Code" report

Legal Debt Margin Last Ten Fiscal Years

2012	2013	2014	2015	2016	2017
\$ 4,295,081,710 644,262,257	\$ 4,138,835,390 620,825,309	\$ 4,207,438,690 631,115,804	\$ 4,513,154,700 676,973,205	\$ 5,010,486,270 751,572,941	\$ 5,368,178,010 805,226,702
127,690,000	115,325,000	169,285,000	153,430,000	139,470,000	125,810,000
(127,690,000)	(115,325,000)	(169,285,000)	(153,430,000)	(139,470,000)	(125,810,000)
-	-	-	-	-	-
644,262,257	620,825,309	631,115,804	676,973,205	751,572,941	805,226,702
0.00%	0.00%	0.00%	0.00%	0.00%	0.00%

Walled Lake Consolidated School District

Demographic and Economic Statistics Last Ten Fiscal Years

<u>Fiscal Year</u>	<u>Population</u>	<u>Total Personal Income (in thousands)</u>	<u>Per Capita Personal Income</u>	<u>Unemployment Rate</u>
2008	88,669	\$ 61,907	\$ 36,318	8.0
2009	88,669	61,907	36,318	14.4
2010	88,669	61,907	36,318	13.0
2011	89,871	62,626	32,534	10.9
2012	89,871	66,390	36,138	8.8
2013	99,771	66,390	36,138	9.0
2014	93,591	66,390	36,138	7.8
2015	93,591	65,637	36,458	6.8
2016	99,771	66,436	37,089	5.1
2017	101,707	69,281	39,127	3.8

Sources:

U.S. Census Bureau, American FactFinder: PFM Financial Advisors, LLC

Walled Lake Consolidated School District

Principal Employers For the Current Year and Nine Prior Years

Taxpayer	2017	Rank	Percentage of	2008	Rank	Percentage of
			Total Employment			Total Employment
Walled Lake Consolidated Schools	1,313	1	2.50	1,810	1	3.77
Huron Valley-Sinai Hospital	1,000	2	1.91	-	-	-
Mac Air Valves, Inc.	800	3	1.52	800	2	1.67
Moeller Mfg. Co., Inc.	500	4	0.95	-	-	-
Williams International	350	5	0.67	450	3	0.94
Alta Equipment Company	350	6	0.67	-	-	-
Wal-Mart	300	7	0.57	-	-	-
Homedics, Inc.	300	8	0.57	-	-	-
Adept Plastic Finishing, Inc.	250	9	0.48	-	-	-
Eagle Industries, Inc.	210	10	0.40	-	-	-
American Plastic Toys, Inc.	-		-	150	8	0.31
Bolton Conductive Systems, LLC	-		-	130	9	0.27
Behr America, Inc.	-		-	250	5	0.52
Libralter Plastics, Inc.	-		-	200	6	0.42
Holloway Companies	-		-	350	4	0.73
Pyles Business Unit	-		-	200	7	0.42
Ryken Tube Group	-		-	125	10	0.26
Total principal taxpayers	5,373			4,465		
Total employment	52,491			48,047		

2017/2008 Principal Employers/Number of Employees: PFM Financial Advisors, LLC

2017 Total Employment - Source: American FactFinder, Form DP03, PFM Financial Advisors, LLC

2008 Total Employment - Source: CAFR Year End June 30, 2008

Walled Lake Consolidated School District

Function/Program	2008	2009	2010	2011	2012
General government:					
Instruction	1,295.31	1,293.84	1,281.21	1,185.32	1,166.18
Support services	290.97	276.40	267.45	181.35	170.25
Community service	68.40	81.60	74.91	50.24	51.09
Athletics	2.00	2.00	2.00	2.00	2.00
Cafeteria	81.79	75.17	80.70	75.49	82.15
Total	<u>1,738.47</u>	<u>1,729.01</u>	<u>1,706.27</u>	<u>1,494.40</u>	<u>1,471.67</u>

Source: Insight FTE Report

**Full-time Equivalent School District Employees
Last Ten Fiscal Years**

<u>2013</u>	<u>2014</u>	<u>2015</u>	<u>2016</u>	<u>2017</u>
1,195.66	1,146.71	1,143.61	1,128.85	1,154.81
184.27	58.29	58.70	58.08	59.08
57.89	77.88	71.45	70.15	77.85
2.00	2.00	2.00	2.00	2.00
<u>81.24</u>	<u>81.58</u>	<u>79.11</u>	<u>74.37</u>	<u>81.86</u>
<u>1,521.06</u>	<u>1,366.46</u>	<u>1,354.87</u>	<u>1,333.45</u>	<u>1,375.60</u>

Walled Lake Consolidated School District

Operating Indicators Last Ten Fiscal Years

Year	Enrollment*	Operating Expenditures	Cost per Pupil	Operating Revenue	Revenue per Pupil	Total Teaching Staff	Percentage of Students Qualifying for Free/Reduced Meals**	Average Teacher Salary
2008	15,653	\$ 162,130,461	\$ 10,370	\$ 162,048,693	\$ 10,364	859	12.99	\$ 74,372
2009	15,711	164,278,455	10,456	163,331,316	10,396	847	16.00	75,803
2010	15,621	165,682,302	10,606	158,606,142	10,153	853	20.50	74,137
2011	15,485	154,206,433	9,958	158,671,724	10,246	793	24.30	78,991
2012	15,544	150,821,411	9,703	153,839,133	9,897	843	26.70	74,938
2013	15,266	155,797,269	10,206	150,912,052	9,886	833	27.16	81,167
2014	15,012	156,789,504	10,444	152,893,121	10,185	838	22.40	81,132
2015	14,807	155,298,930	10,488	155,829,860	10,524	821	22.00	77,723
2016	14,447	157,267,449	10,886	155,219,073	10,744	831	21.00	75,867
2017	14,252	154,705,332	10,855	156,230,125	10,962	821	21.00	73,904

* Student F.T.E.

** Michigan Department of Education School Lunch Program

Source: MEIS/SRSD Fall F.T.E. count for LEA/PSA - DS4120 - Audited

Walled Lake Consolidated School District

Function/Program	2008	2009	2010	2011	2012
Instructional buildings:					
Elementary:					
Number of buildings	14	14	14	14	14
Square footage	751,421	751,421	757,021	757,021	757,021
Capacity	6,625	6,625	6,765	6,765	6,765
Enrollment	6,806	6,872	6,789	6,675	6,715
Middle:					
Number of buildings	4	4	4	4	4
Square footage	568,012	568,012	568,012	568,012	568,012
Capacity	3,376	3,416	3,416	3,416	3,416
Enrollment	3,633	3,585	3,558	3,679	3,689
High:					
Number of buildings	3	3	3	3	3
Square footage	1,005,002	1,005,002	1,005,002	1,005,002	1,005,002
Capacity	4,829	4,829	4,829	4,829	4,829
Enrollment	5,028	4,957	4,919	4,985	5,054
Other:					
Number of buildings	4	4	4	4	4
Square footage	152,028	152,028	152,028	152,028	152,028
Capacity	200	200	200	200	200
Enrollment	248	232	230	69	60
Administrative:					
Number of buildings	1	1	1	1	1
Square footage	52,200	52,200	52,200	52,200	52,200
Transportation:					
Number of garages	1	1	1	1	1
Buses	131	125	123	123	119
Athletics:					
Football fields	7	7	7	7	7
Soccer fields	7	7	7	7	7
Running tracks	3	3	3	3	3
Baseball/Softball	12	12	12	12	12
Swimming pools	3	3	3	3	3
Playgrounds	14	14	14	14	14

Source: Walled Lake Consolidated School District's books and records

Capital Asset Information Last Ten Fiscal Years

2013	2014	2015	2016	2017
12	12	12	12	12
671,435	671,435	671,435	671,435	671,435
6,765	6,765	6,765	6,765	6,765
6,476	6,440	6,272	6,138	6,035
4	4	4	4	4
568,012	568,012	568,012	568,012	568,012
3,416	3,416	3,416	3,416	3,416
3,661	3,515	3,542	3,378	3,338
3	3	3	3	3
1,005,002	1,005,002	1,005,002	1,005,002	1,005,002
4,829	4,829	4,829	4,829	4,829
5,003	4,945	4,774	4,682	4,596
4	4	4	4	4
152,028	152,028	152,028	152,028	152,028
200	200	200	200	200
65	170	283	163	286
1	1	1	1	1
52,200	52,200	52,200	52,200	52,200
1	1	1	1	1
119	119	119	108	108
7	7	7	7	7
7	7	7	7	7
3	3	3	3	3
12	12	12	12	12
3	3	3	3	3
12	12	12	12	12