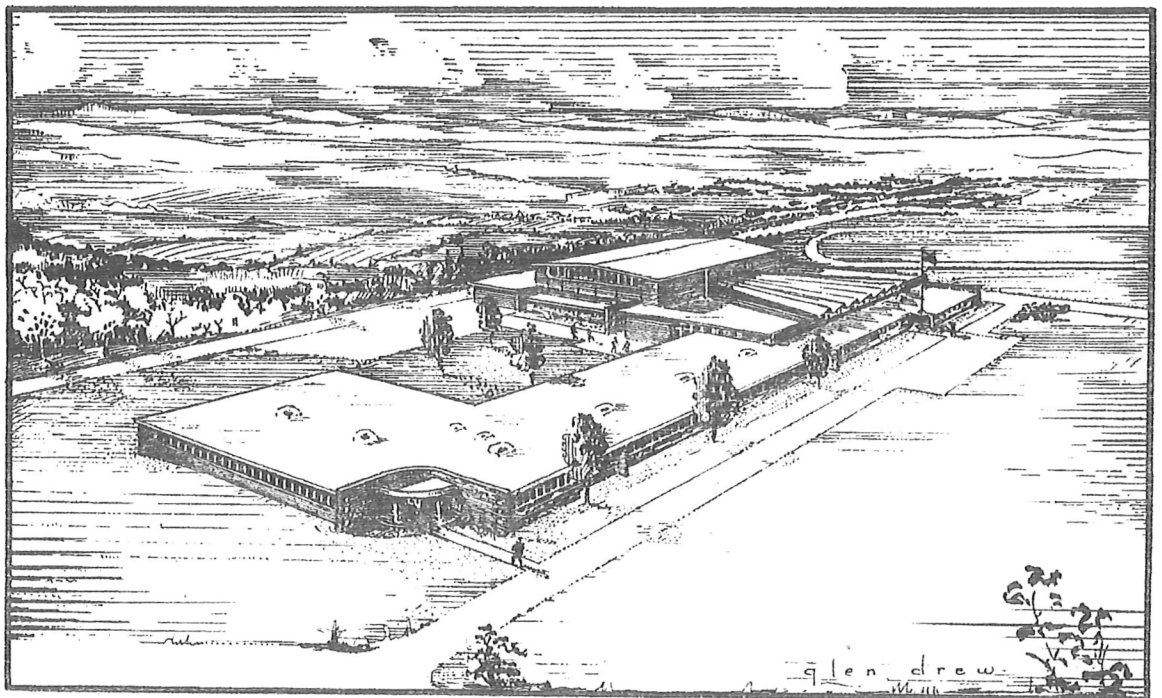


**SPECIAL SCHOOL BOND ELECTION
REORGANIZED SCHOOL DISTRICT R-II
WRIGHT CITY, MO.**

\$250,000.00

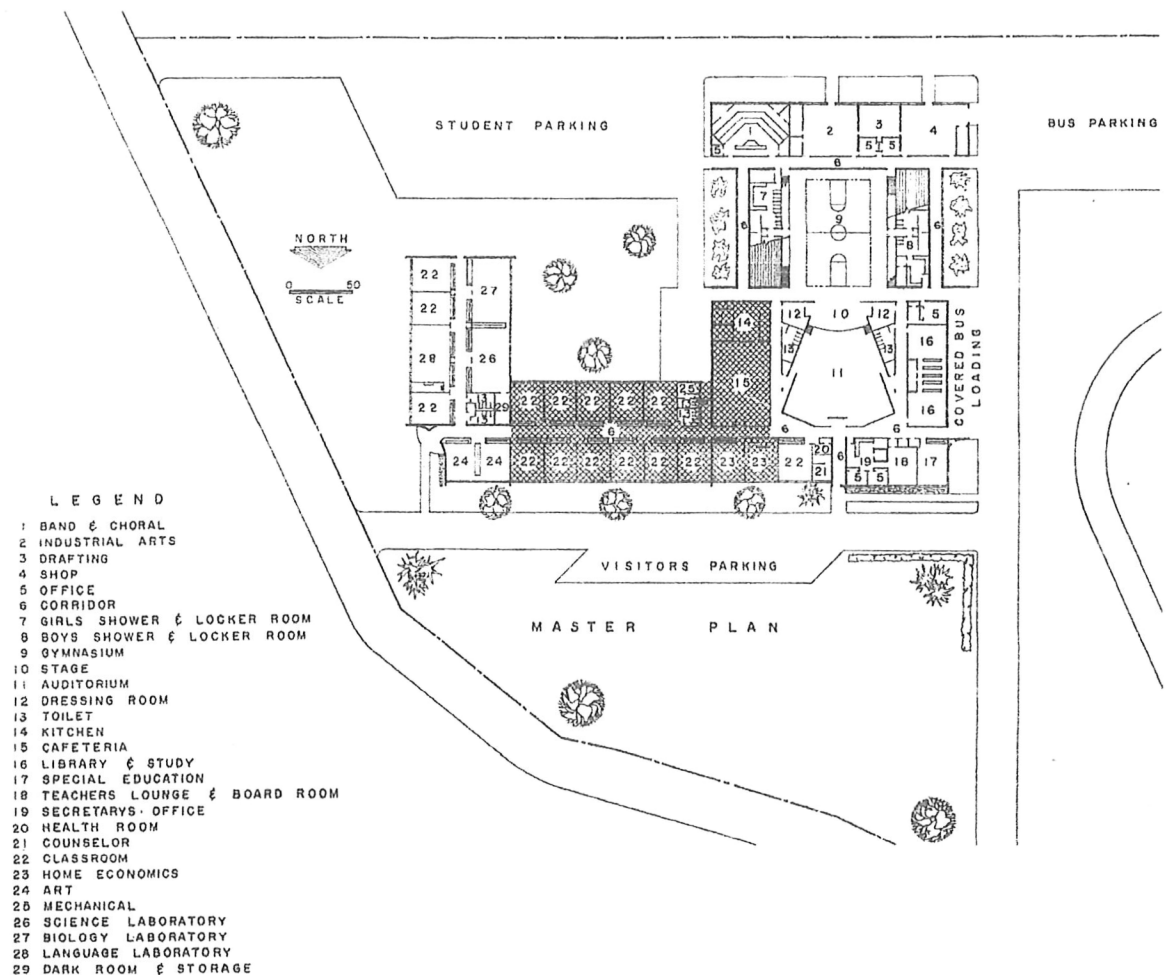
SATURDAY, JULY 11, 1966

POLLS OPEN 6:00 A.M. TO 7:00 P.M.



PROPOSED MASTER PLAN
WRIGHT CITY SCHOOL

Better Schools Make A Better Community



FOREWORD

Your Board of Education is confronted with the problem of building requirements to provide better educational facilities for boys and girls attending our schools. Much time and study has been given to existing problems and in cooperation with our school architects, we have agreed upon a building plan.

It is our policy to inform patrons of our school district of our building needs. Therefore this brochure has been prepared for your consideration.

Your Board of Education,

Dr. J. R. Beckmeyer, President
Cornelius Held, Member
Calvin Groeper, Member

Carl Garrett, Vice President
Otto Hollenbeck, Member
Robert Lewis, Member

WHY DO WE NEED A NEW SCHOOL BUILDING?

During the past several years our enrollment has steadily risen from 440 in 1960-61 to approximately 555 this year. Added to this fact the anticipation of a continuing growth in school enrollment and community makes it necessary for us to enter into a building program at this time that will meet our present classroom needs and be the first step in a long range building program that will develop into a modern Junior-Senior High School.

Our present facilities are filled to capacity. There is no room for expansion. In the high school an end of corridor is partitioned off

for classroom use. We are unable to provide special education, counseling service, or additional elementary sections because there is no room. Our present facilities are filled to capacity.

In order to meet classification requirements of the State Department of Education we must provide adequate facilities for the distribution of our student body. We must make possible a more flexible use of our present buildings. We must maintain our present rating and work toward providing a better program of education in a more adequate physical plant. Our aim should be to improve our school and our state classification.

WHAT DO WE PROPOSE TO BUILD?

Your Board of Education has undertaken, in consultation with the architectural firm of Drew and Joblonsky, a study of the long range building needs for our school district. As an outgrowth of numerous conferences it was proposed to include in the first phase of the program 13 classrooms, cafeteria/kitchen, restrooms, office, storage and heating facilities. The building is to be erected on the recently acquired site located just west of Wright City city limits and north

of I-70. The building is to be so designed that additional classrooms may be added as future needs may require.

The building will be of modern design and will be constructed out of the most modern and attractive building materials. The building will meet all the requirements in the way of specifications of the State Department of Education.

WHAT IS IT GOING TO COST?

The estimates submitted to the Board of Education on the cost of construction and furnishing the new building run close to \$250,000.00. The Board with the advice of our architects will advertise for construction bids. The Board pledges that it will spend

no more money than is absolutely necessary for the proposed project. Our building site is already bought and paid for, therefore no additional funds are required for the acquisition of land.

ARE WE ELIGIBLE FOR STATE SUPPORT?

A check with the director of school building services Dr. George Englehart of the State Department of Education indicates that we are eligible for some state assistance for our building program

(\$5,000.00) providing our plans and specifications are submitted to the department and receives their approval. This we fully plan and intend to do.

HOW WILL THE BONDS BE REPAYED?

The Board of Education has worked with bond attorney Carl Trauernicht, Jr. of the firm of Charles and Trauernicht of St. Louis. Mr. Trauernicht has advised the Board that an increase in the tax levy for debt service of approximately but not more than \$.50 cents

on each \$100.00 would be required based on the current assessed valuation of the district. The Board plans to retire the bonds over a 20 year period and will sell only those bonds needed to meet the requirements of the building program.

If Your Property Is Assessed At:	Your Increased Cost For This Improvement Will Be:
\$ 500	\$ 2.50
1,000	5.00
1,500	7.50
2,000	10.00
3,000	15.00

The Board of Education spent much in time, energy, and talents in planning for present and future building needs. The cost will be reflected in a reasonable tax increase. However, the building program is needed if the district is to continue to provide an adequate educational program for our young people. The Board is confident that the patrons of the district knowing the facts and recognizing the needs will give their wholehearted support to the passage of the bond issue.

No wiser or better investment can be made than that made toward the education of our youth. Education is the cornerstone of democracy. We urge your support and your vote on Saturday, June 11th.

FRASER C. SMALL
Superintendent of Schools

To Vote FOR The Bonds,
Mark Your Ballot As Shown Below

**SAMPLE BALLOT
SPECIAL BOND ELECTION
REORGANIZED SCHOOL DISTRICT R-II
WARREN AND LINCOLN COUNTIES, MISSOURI**

Instructions to Voters:

To vote in favor of the loan place a cross (X) mark in the square before the words "FOR THE LOAN."

To vote against the loan place a cross (X) mark in the square before the words "AGAINST THE LOAN."

Shall Reorganized School District No. R-2 of Warren and Lincoln Counties, Missouri incur indebtedness and issue its bonds therefore in the amount of \$250,000 for the purpose of erecting a new school-house and furnishing same?



FOR THE LOAN



AGAINST THE LOAN

VOTE AT
WRIGHT CITY SCHOOL CAFETERIA



Boxholder
Wright City, Mo.



The ★ **SPECIAL ISSUE** ★
WRIGHT CITY

Bulk Rate
U.S. Postage Paid
Permit No. 17
Wright City, Mo.
63390

POSTAL PATRON
LOCAL

EDITORIAL

PUBLISHED (BI-MONTHLY) AT WRIGHT CITY, MO., BY THE WRIGHT CITY PROGRESS CO., INC.

JUNE 8, 1966.

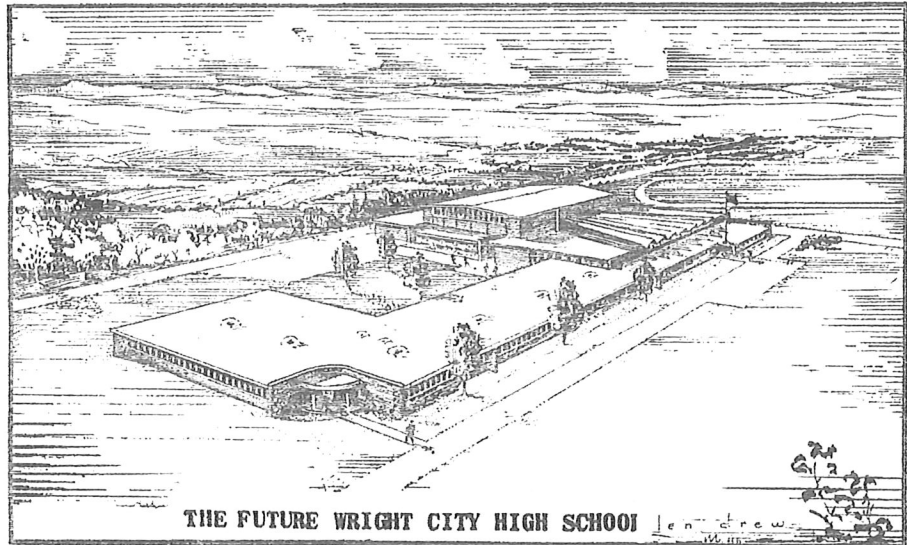
SCHOOL BOND ELECTION SATURDAY

Tax increase of less than 50¢ for \$250,000 issue

The patrons of Warren and Lincoln County School District R-II will go to the polls on Saturday, June 11th to vote on a bond issue of \$250,000 to provide additional classrooms for the pupils of the school district.

Your board of education feels that given the facts concerning the need to begin a building program this year, the people will will support the program and approve the bond issue. Several questions concerning the program have been raised. They are - (1) how will the bonds be paid for? (2) what effect will the bond issue have on school taxes? (3) what does the board plan to build? (4) how serious is the need for a building program at this time?

Your board of education plans to retire the bonds over a twenty year period. Our bond attorneys, Charles and Trauernicht, of St. Louis have recommended that the bonds be devetalled into our existing outstanding bonds and have estimated that with our present assessed valuation of \$3,278,478.00 that this would require a tax increase for debt service of not more than 50 cents on each \$100 assessed valuation. For tax purposes this would mean an increase of less than \$5.00 for each \$1,000. assessed valuation.



THE FUTURE WRIGHT CITY HIGH SCHOOL

district increases (as it has been doing each year) the tax rate for debt services could be reduced to a figure sufficient to meet the bond retirement requirements of the school district. This means that the 50 cent levy will be lowered as the valuation of the district increases. In order to secure passage, the bond issue must secure a two-thirds majority of the votes cast. This means that all those interested in the passage of the bond issue must come to the central polling place (Wright City School Cafeteria) and cast their ballots. A large turnout is a must if the vote is to truly reflect the desires and the will of the people of the R-II school district.

In 1965 the school district acquired a twenty acre tract of land from the Wright City Development Company. This area is located just west of the city limits and north of

the new Interstate 70. It is on this lovely site that the board plans to construct the new Wright City school building that will develop into a modern Junior-Senior High School.

Our existing school buildings are filled to capacity now. There is no room for expansion. Additional room is needed now to provide such important educational requirements as special education, remedial instruction, library facilities, health services, guidance and counseling, and simply additional classrooms for a growing school enrollment.

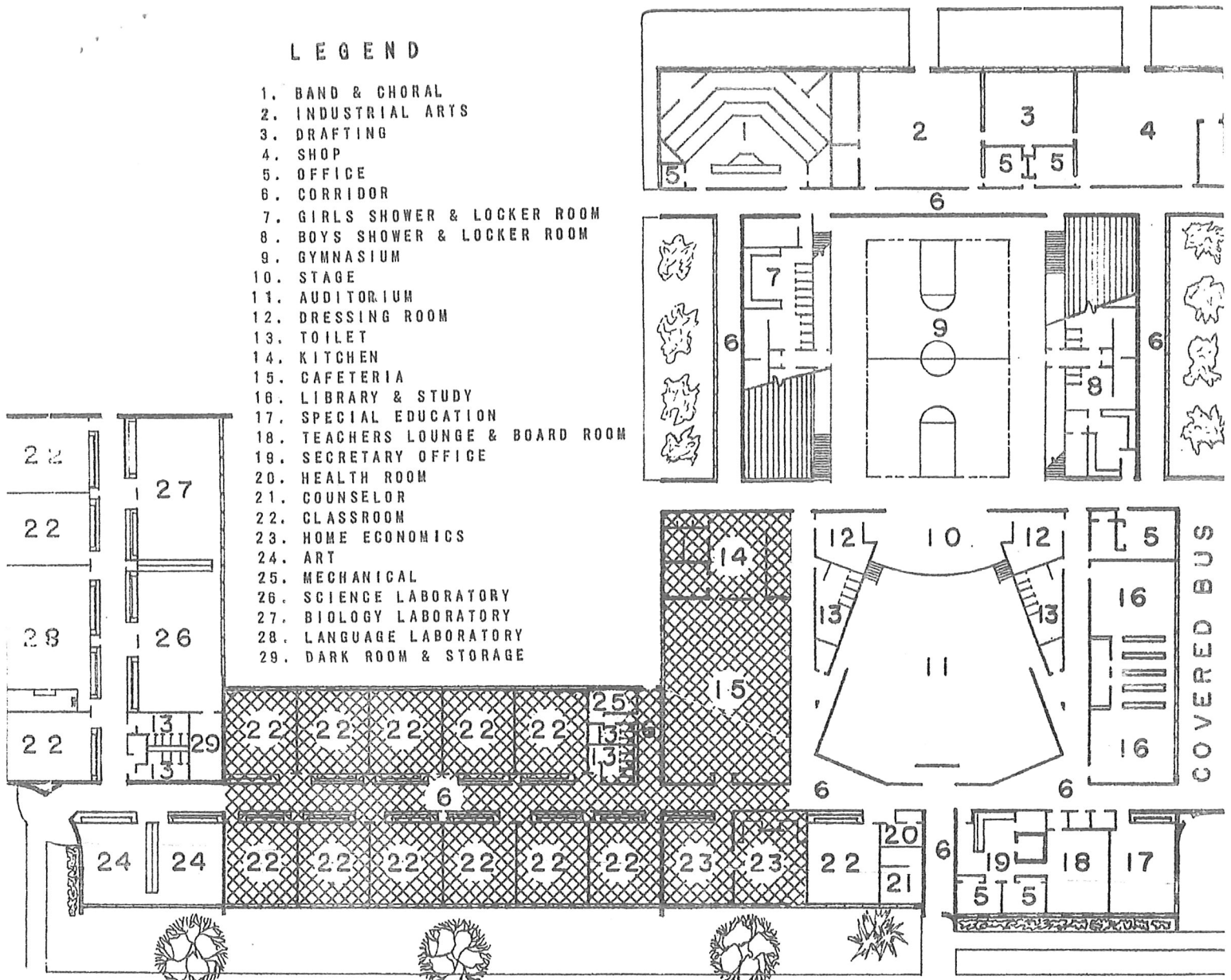
In order to meet this basic need of providing additional space for educational purposes, your board of education retained the architectural firm of Drew and Jablensky and authorized them to draw up a master plan which would meet the present need for classrooms and which over the long run would develop

into a new and modern Junior-Senior High School for the Wright City R-II school district. The first building phase would provide 13 classrooms, a cafeteria/kitchen storage, heating and administrative facilities. The architects estimate of the cost for the construction and furnishing the building was \$250,000. Based on square footage the cost (including architects fees) would be \$14.00.

Our school population in grades 1 thru 12 is presently 556. Of this number 63 were enrolled in the first grade, 47 in the eighth grade, and 34 in the senior class. As can be seen from these figures, we can look forward to a steady increase in the number of school children from year to year. In addition to the growth of the school is the new housing being constructed throughout the district and which continues the growth

LEGEND

1. BAND & CHORAL
2. INDUSTRIAL ARTS
3. DRAFTING
4. SHOP
5. OFFICE
6. CORRIDOR
7. GIRLS SHOWER & LOCKER ROOM
8. BOYS SHOWER & LOCKER ROOM
9. GYMNASIUM
10. STAGE
11. AUDITORIUM
12. DRESSING ROOM
13. TOILET
14. KITCHEN
15. CAFETERIA
16. LIBRARY & STUDY
17. SPECIAL EDUCATION
18. TEACHERS LOUNGE & BOARD ROOM
19. SECRETARY OFFICE
20. HEALTH ROOM
21. COUNSELOR
22. CLASSROOM
23. HOME ECONOMICS
24. ART
25. MECHANICAL
26. SCIENCE LABORATORY
27. BIOLOGY LABORATORY
28. LANGUAGE LABORATORY
29. DARK ROOM & STORAGE



The above is the complete floor plan for the new high school. The shaded area indicates the portion to be built under the anticipated bond issue of June 11th.

and development not only of Wright City, but of the entire area that comprises the R-II School District. Within a few years there will be over 300 students enrolled in grades 7 thru 12, and over 400 in grades 1 thru 6.

The patrons of the school district can be justly proud of the progress they have made in providing improved educational opportunities for its school youth. Much progress has been made including the expansion of mathematics and science courses, the introduction of an industrial arts program, the offering of a foreign language, and so on. These

remains to be done if progress is to continue and if we are going to meet the growing and complex educational needs of our young people.

Your support for the bond issue is important. Your vote is needed. You are urged to vote FOR the bond issue on Saturday, June 11, at the Wright City School Cafeteria. Your vote for the bonds will be a vote for a better school and a greater educational opportunity for your children.

Fraser C. Small, Supt.



vote

FOR ☒

BOND ISSUE

JUNE 11