



NEWS

Mercer Island School District

Volume 9 Issue #2, February 2008

This issue of District NEWS provides information on the Capital Projects Levy to come before voters on March 11, 2008. Please check the district web site for the most current information at www.misd.k12.wa.us

State funding covers only part of school costs

Your support means everything

The Mercer Island School District is grateful for the support of our community in passing the 2004 Capital Projects Levy to implement the District Facilities and Technology Plans. This funding, which supports student learning and major maintenance projects, will expire this year.

The total cost at the end of 2008 was \$4,790,000 (at \$15 per \$100,000 of assessed value in 2007). The new levy, if passed, will replace this amount.

2008 Capital Projects Levy

Not A New Tax-
This is a replacement levy

What:	Renewing the Capital Projects Levy to implement the District's Facilities Maintenance and Replacement Plan and Technology Plan
When:	March 11, 2008
Length:	4 years, 2009-2012
Total Amount:	\$9,994,000
Annual Cost:	Estimated \$39.74 per \$100,000 of assessed value in 2009; \$35.89 per \$100,000 in 2010 and \$27.85 in 2011 and 2012



March 11 – Special Election

Levy Renewal Funding for Facilities Maintenance and Technology 2009-2012

When the voters approved the school construction bonds, our commitment was to maintain the new buildings in excellent condition. The District's general fund supports the costs of routine and preventative maintenance, but capital funds are required for major projects such as replacing roofs, interior and exterior painting and field upgrades. We are asking our community to renew the Capital Projects Levy that will expire at the end of 2008. Without continued capital levy funding, deferring major maintenance projects becomes even more costly. Delaying these projects may also lead to additional damage and/or deterioration. Renewed funding for facilities and technology ensures adequate on-going maintenance and provides funding for updated technology equipment and support through 2012.

Our state does not provide basic education funding for the renovation and improvements of school facilities, technology equipment or technology support. Voter support of a \$9,994,000 Capital Projects Levy over the next 4 years will ensure the continued implementation of the District's Capital Facilities and Technology Plan.

The Breakdown:

Facilities Projects— Total \$3,254,000 over 4 years

The Mercer Island School District has a comprehensive Facilities Plan detailing the improvements made over the past decade, and the need for additional on-going funding to keep the facilities in like-new condition. The list below reflects items in the most urgent need of attention over the next 4 years:

District-wide security alarm upgrades, fire alarm upgrades, portable re-roofing replacement and bond pre-planning: \$1,126,760

These upgrades are necessary for the safety of students and staff in and around the schools. The district anticipates returning to the voters to authorize a bond issue for additional capital improvements in 2009. Funds are necessary for planning needed playfield improvements and expansion of educational programs. Costs include feasibility studies,

coordinating feasibility study committees and developing educational specifications.

Crest Learning Center interior and exterior painting: \$33,728

The painting improvements will preserve wall surface areas.

Island Park Elementary installation of irrigation in south playfield, replace small areas of fencing and provide new play area equipment: \$100,531

These improvements are necessary for field preservation, student safety and for the replacement of hazardous play area equipment removed in 2006.

Islander Middle School locker room upgrade, pavement striping and generator electrical work: \$123,597

The IMS locker room needs to be upgraded to accommodate higher use due to the new state standards in health and fitness. Pavement striping is necessary for safety and the generator electrical work will support the school (and the necessary outreach) in the case of a power outage or other emergencies.

Lakeridge Elementary interior painting: \$107,930

The painting improvements will preserve wall surface areas.

Maintenance and Operations Building installation of existing back-up generator: \$14,362

The generator is needed in the District Maintenance and Operations facility to support the operations of the District in emergency situations.

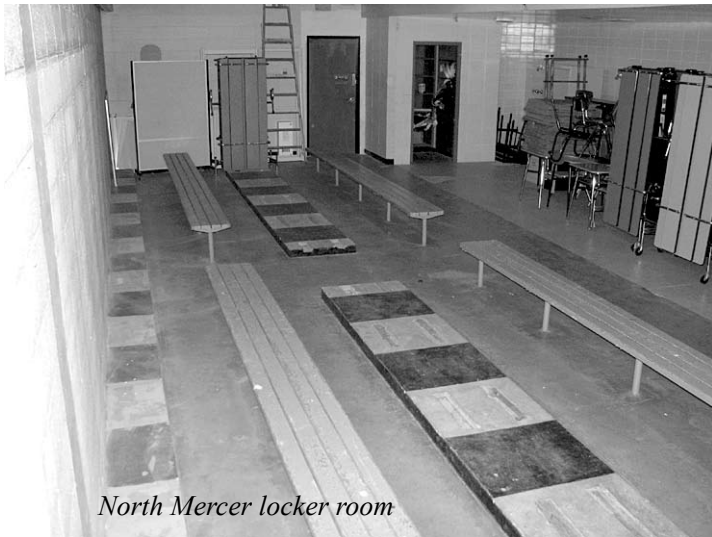
Mercer Island High School upgrade stadium bathrooms, upgrade concession stand, Lacrosse field stitching, interior and exterior painting, tennis court resurfacing maintenance, and additional parking spaces on campus: \$954,502

The stadium bathrooms and concession stand are old and need to be upgraded to code regulations. The field stitching work will create permanent lines on the playing field for Lacrosse.





MIHS tennis courts



North Mercer locker room

Tennis court resurfacing is necessary for regular maintenance. Additional parking is important to accommodate current usage.

North Mercer Campus roof resurfacing, modernization of lockers and bathroom and heat pump replacement: \$565,416

These improvements are necessary to upgrade the facility to support current needs.

West Mercer Elementary interior and exterior painting: \$227,174

The painting improvements will preserve wall surface areas.

Technology – Total \$6,740,000 over 4 years

Vision: The Mercer Island School District employs technology in order to enhance learning, strengthen communication, support innovation, encourage problem solving and promote collaboration. Students and staff will apply the tools of technology in an educated, efficient, and ethical manner.

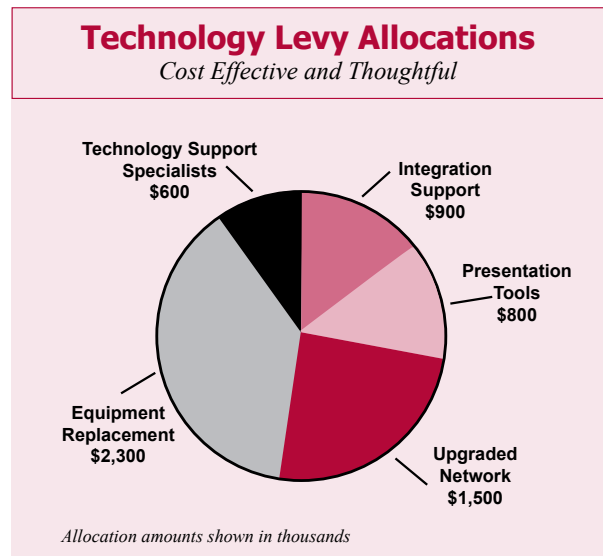
Why is Technology important to our schools?

Technology has become an integral part of the instructional and administrative operation of the school district. Technology allows teachers to create student learning experiences that utilize a student’s higher order thinking

skills and capitalizes on children’s innate interest in digital technologies. These resources require funding of personnel, equipment, peripherals and professional development to be effective for students and staff. The majority of the funding comes from the Technology portion of the proposed Capital Project Levy.

How will the funding be used?

- Staff Development will include the development and implementation of core, required technology integration lessons/projects
- Addition of Technology Integration Teachers on Special Assignment to implement professional development
- Development and implementation of standard classroom presentation technology hardware and software and standard classroom technology equipment
- Implementation of upgraded district network
- Continuation of on-going equipment replacement and software upgrades
- Continuation of funding for technology-support personnel



Technology Funding Summary

Integration Support

- Technology Integration Teachers (Teachers on Special Assignment) – \$940,000
- Staff Development – \$600,000

Standard classroom presentation technology tools

- Purchase, installation and training – \$800,000

District network upgrade – \$1,500,000

Equipment replacement and additional CPUs/ software replacement – \$2,300,000

Technology Support Specialists/Salaries – \$600,000
Salaries are split between the general operating funds and the Capital Projects Levy

Total – \$6,740,000

Technology Levies/Bonds in Surrounding Districts

Year	School District (Student FTE)	Length	Technology Levy Total	\$/ Student/Year
2004	Mercer Island 4,000	4 years	\$2.9 million	\$181
2008	Mercer Island 4,000	4 years	\$6.74 million	\$421
2006	Bellevue 15,528	5 years	\$51 million	\$656
2006	Tahoma 6,700	4 years	\$9.9 million	\$369
2006	Bainbridge 4,142	4 years	\$6.1 million	\$368
2006	Lake Washington 23,432	4 years	\$33.5 million	\$357
2006	Issaquah 15,432	4 years	\$17 million	\$275
2006	Northshore 19,850	4 years	\$18 million	\$226
2006	Riverview 3,058	4 years	\$2.64 million	\$215
2006	Snoqualmie Valley 4,826	4 years	\$4 million	\$207
2006	Kent 27,571	4 years	\$20 million	\$181

For more information on the 2008 Capital Projects Levy, contact:

Dr. Gary Plano, Interim Superintendent
206 236-3300

Liz Dodd, Associate Superintendent of Business Services
206 236-3316

Jennifer Wright, Director of Technology Services
206 236-3445

Keith Ellis, Director of Maintenance
206 230-6339

\$3,100,000 in 2009
\$2,800,000 in 2010
Levy Costs 2009 through 2012
\$2,047,000 in 2011
\$2,047,000 in 2012

Mercer Island School District
4160 86th Avenue SE
Mercer Island, WA 98040

Non-Profit Org. US Postage PAID Permit # 19 Mercer Island, WA

ECRWSS

Residential Customer