

Walled Lake Outdoor Education Center

Family Science
Nights

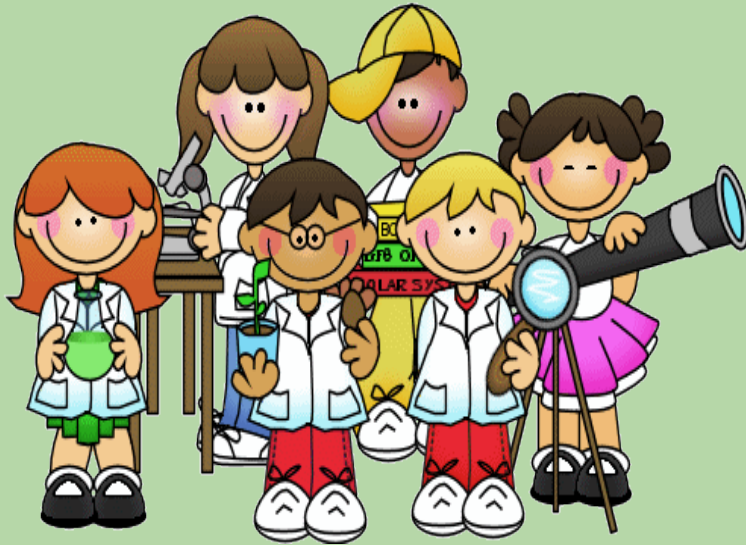


Science Exploration
Stations

We Bring

Hands-On Science...

to YOUR SCHOOL!



Life Science



Physical Science



Earth Science



Family Science Night



This is not your “ordinary” family night! Invite all of your school families to enjoy an exciting night packed with hands-on science fun! This popular evening activity allows families to explore self-directed science experiments in the areas of life science, physical science, and earth science. All activities are linked to Michigan Grade Level Content Expectations and follow the scientific process. You provide 20 volunteers and we will provide 20 Science Exploration Stations.



Science Exploration Stations

Are transportation costs holding you back from field trip experiences? Looking for a something new? The Walled Lake Outdoor Education Center is ready to bring a fun, interactive and educational “field trip” to your school! Students grades K-6 are given the opportunity to explore up to 20 different Science Exploration Stations during the school day with their classmates. Choose from a wide variety of hands-on science activities in Physical, Earth, and Life Sciences that meet the needs of your school. Our inquiry-based activities are developmentally appropriate and align with the Michigan Grade Level Content Expectations. Best of all, your students will have fun while learning!



Life Science

- ~ Verimcomposting
- ~ Bird Bones
- ~ Owl Pellets
- ~ Heart Rate
- ~ Fingerprint Forensics
- ~ Balance



Physical Science

- ~ Slime
- ~ Rotocoptors
- ~ Bubbles
- ~ Sound
- ~ Buoyancy
- ~ Centripetal Force
- ~ Conductors
- ~ Circuits
- ~ Static Electricity



- ~ Surface Tension
- ~ Trajectory
- ~ Balloon Rockets
- ~ Rollercoasters
- ~ Magnets
- ~ Ziplock Bag Poke
- ~ Levers
- ~ Dancing Raisins
- ~ Tennis Bounce

Earth Science

- ~ Explore Tornadoes
- ~ Rocks
- ~ Minerals
- ~ Fossil Imprints
- ~ Topographic Maps
- ~ Archaeology Dig





How to get started...

The Walled Lake Outdoor Education Center is ready to provide your school with an AWESOME Hands-On Science Experience. Our Science Night is similar to an Open House. Students and Parents can arrive/depart at any time within the 1.5 hour time frame. Participants are able to travel around the room experimenting with any/all of the activities. The cost is \$650 within a 25 miles radius of the WLOEC.

Pricing varies for Science Exploration Stations, ranging from \$450-\$1,000 depending on your needs (time allotted/number kits). We will help you create an event that works for your school!

Please Contact us at 248-956-5120