



KYIV INTERNATIONAL SCHOOL

PREPARATIONS AND PLAN FOR REOPENING THE KIS CAMPUS

Kyiv International School is planning to gradually reopen the school campus following the winter break. We understand there may be many difficulties and challenges connected to this, but we would like to take these next steps. We also understand that we must plan to be flexible and adaptable for the needs and concerns that may arise.

We will be sending out a separate survey for parents and having several community meetings to discuss these plans. **Online access to learning will continue to be offered throughout the school year.**

Teacher Assignments

We are shifting our teaching assignments around to make sure that we have staff positioned to support each age level on campus. This means there may be some changes of teachers for your children. This is necessary for us to support on campus supervision.

Safety Shelter Preparations

We are setting up our basement to have classrooms and function as a safety shelter during air raids. Emergency supplies will be placed in several different areas of the basement. All individuals on campus will be expected to use the safety shelter during these times.

Emergency Procedures and Policies

KIS has added emergency procedures connected to air raids to ensure that anyone on campus is able to access the safety shelter in a timely manner and do an accountability check.

Phases For Reopening the Campus

Below is a timeline and explanation of the expected three-phase approach for opening the campus.

Phase 1 – Community Events (December-January)

Phase 2 – Community Center (February-April)

Phase 3 – Traditional School (May-June)

A Community Center At KIS

One of the best things about KIS is our community. During the Community Center Phase, KIS will be allowing parents to bring their children to school and stay on campus to do other activities while their children join classes. There will be a dedicated space for parents to connect to WIFI and work, use the fitness room, participate in parent classes, and use other parts of the facility. Parents may decide to stay on some days and not on others, but want this option to be available for those who feel uneasy leaving their child(ren) at the beginning.

PHASES OF REOPENING THE KIS CAMPUS

PHASE 1	PHASE 2	PHASE 3
COMMUNITY EVENTS	COMMUNITY CENTER	TRADITIONAL SCHOOL
<p>During phase one, the campus will be open to the community to use for the following reasons:</p> <ul style="list-style-type: none"> - PTO hosted school events - Use of playground and facilities - Sports activities - Checking out books from the library - Tutoring 	<p>During phase two, the campus will operate more as a community center.</p> <ul style="list-style-type: none"> - Some students will have classes at school. - Parents will be able to stay and work from the school, use facilities, and do other activities while their children have classes with teachers. - All other activities from phase 1 may continue. 	<p>During phase three, the campus will operate more as a traditional school as needed.</p> <ul style="list-style-type: none"> - More students will have classes at school. - Parent access to the facilities will be more limited. KIS will continue to plan parent activities and classes at the school.
IMPORTANT CONSIDERATIONS FOR LUNCH AND TRANSPORTATION		
<ul style="list-style-type: none"> -No school transportation -No school food services 	<ul style="list-style-type: none"> -No school transportation -No school food services 	<ul style="list-style-type: none"> -School supported transportation may be limited -School provided lunch services may be limited.
EXPECTED TIMELINE		
<p>December-January</p> <p>We are planning to host some PTO events and schedule times for students to visit the library or access the facilities during this time.</p>	<p>February-April</p> <p>We hope to shift towards having classes for those interested in joining others at school each day.</p>	<p>May-June</p> <p>We hope to continue operating with parents feeling more comfortable with their children staying at school.</p>
MODE OF EDUCATION		
<p>Online Learning</p> <p>KIS will continue with full online learning at this time.</p>	<p>Hybrid Learning</p> <p>During this phase, students who were on campus would be meeting with several teachers in person while also connecting with some students and teachers online.</p>	<p>Hybrid Learning</p> <p>During this phase, students who were on campus would be meeting with several teachers in person while also connecting with some students and teachers online.</p>

KIS SAFETY SHELTER AND EMERGENCY PROCEDURES

BASEMENT SHELTER

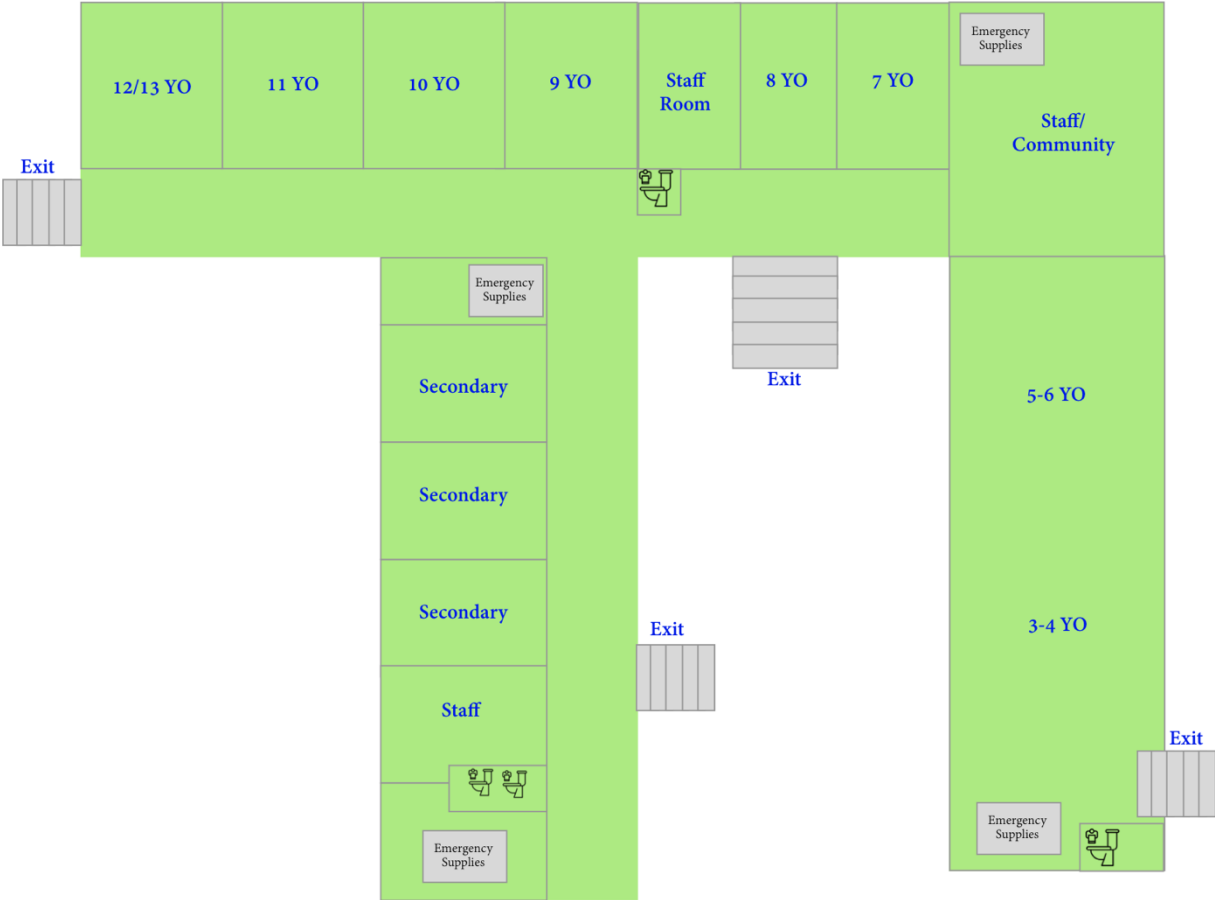
KIS has a basement space that qualifies for a bomb shelter. In case of an emergency, the basement area will also be stocked in for different areas the following resources for a duration of 72 hours:

- 1. Food & Water
- 2. Battery packs, Flash Lights, Matches and Candles
- 3. Blankets and Yoga Mats
- 4. First-Aid/Medical Kits
- 5. Fire Extinguishers
- 6. Utility tools – shovels, crowbars, sledge hammers, saws, etc
- 7. Means of communication and contact information

Basement Exits – The basement has 4 different exits.

Basement Toilets – The basement has 4 different toilets spread out in the different areas.

Basement Layout For Classrooms and Learning Spaces



AIR RAID SIREN PROCEDURES

Air Raid sirens indicate the danger of missile strikes and that everyone on campus should go to shelters. The KIS basement is set up with classroom resources and emergency supplies to support staff and students for 72 hours.

Classrooms will be set up as an alternative site with all of the necessary school supplies and technology needed to continue learning.

In the event of an Air Raid, the following steps should be taken when on campus:

1) Air Raid Notification

Given the frequency of air raids, there will be a staff member who is responsible for the daily monitoring of air raid alerts and notification system using the school PA.

2) Gather Resources

Teachers should take into consideration the minimum amount needed to move to the shelter.

3) Move to Shelter

All persons should move to the appropriate area in the shelter for an accountability check. They should use the quickest route to the basement from their current location.

4) Accountability Check

Staff will check-in using the flow chart to report everyone is safe and in the appropriate location.

5) Continue With Class

Learning may resume, once everyone is safe and accounted for within the class. Students may continue with class activities while teachers are reporting to leadership.

6) Wait For All Clear

Once the all clear is given, students, faculty, and parents may exit the bomb shelter and return to other areas. At the teachers discretion, they may finish the class period in the shelter location before returning to the classroom, in order to minimize the loss of time transitioning.

If any section of the campus is impacted by direct or nearby explosions there are separate procedures for potential evacuation of the building, accountability checks, and communication with parents.