



Vintage Feel. Modern Appeal.

PUTNAM

BUSINESS INCENTIVES • COMMUNITY EVENTS • SHOPPING & DINING • EDUCATION & HEALTHCARE

Connecticut

A BUSINESS & COMMUNITY GUIDE



85 main



“An outing to 85 Main can make you feel like you’ve been on vacation”

- Worcester Telegram & Gazette



American Fusion Cuisine

fresh, local, organic, sustainable,
artistically driven ingredients

Casual Fine Dining

inviting & contemporary bar atmosphere,
seasonal outdoor dining

**JOIN US FOR
HAPPY HOUR 4-6PM
Wednesday Nights - Bar Only**



**The Bulletin
1st Place Best Sushi
2018, 2019, 2020**

**ZAGAT RATED 2016
★★★★★**

85 Main St. Putnam CT • www.85main.com • 860.928.1660

Welcome TO THE TOWN OF PUTNAM!

Welcome...nestled in the heart of NORTHEAST CT, also known as The Quiet Corner, the town of Putnam continues to make noise! Originally a quintessential New England is still making noise. The factories may be quiet but we have come alive. Revitalizing our Downtown District has been and continues to be a focus of development and vibrancy for both residents and visitors alike. Putnam boasts of centralized and innovative infrastructure including a 3-mile River Trail with a Canoe Launch Park are, Dog Park, Farmers Market Pavilion, Story Walk Kiosks and even a Bicycle Repair Station. Our Trail ends at the Regional Hale Family YMCA, the largest such facility in the State of Connecticut.

The economic climate of Putnam is strong, thriving and continues to expand. Centrally located among the Boston, Providence, Worcester and Hartford markets, the town is conveniently accessed by Interstate 395 and US Route 44. Our newly designed Technology Park will contribute to the success in attracting business technology in the national and global markets. Putnam's priority for the past term has been the long-needed safety improvements of our infrastructure including: bridges, road paving and sidewalk rehabilitation.

Restaurants, pubs and breweries abound, with alfresco dining taking center stage. The Putnam Business Association and the

Putnam Recreation Department continue to provide events and celebrations that bring visitors from all over New England. A long restored and preserved playhouse offers current shows as well as arts and cultural venues. Art galleries, antique marketplaces, specialty shops and boutiques line the streets hosting unique gifts and treasures for all ages. No one could market our community better than *Boston Magazine's* designation as "One of the Best 15 Small Towns to Visit in New England."

We are all aware of the life-altering impact the pandemic has had on our families, careers and community. Meeting these challenges has been a strength that our Town continuously builds upon proving, yet again, that we strive to be a better place to live, work and grow. Our success? Well it's really all about passionate people giving to their community and creative partnerships working collaboratively for everyone's best interest. It's about taking an active role in shaping Putnam's future and making sure that the town is both strong and vibrant by embracing and sustaining the community spirit that defines us.

Sincerely,

Barney Seney
Barney Seney, Mayor

**The new Municipal Complex includes:
municipal offices, a new library, community center and the Aspinock Historical Society.**

24 miles from Providence • 43 miles from Hartford • 53 from Boston • 138 from New York City



This publication is
Published & Distributed by:

GDP

GLOBAL DESIGN & PUBLISHING LLC

860-963-0414 • kelly@gdpublishing.com
www.gdpublishing.com

All design and text is provided by Global Design & Publishing, LLC in collaboration with The Town of Putnam, Connecticut. All text and images have been carefully compiled for this publication. However, we do not guarantee the accuracy of the content. **Photography by: Jim Tourtellotte** (additional photos provided by Global Design & Publishing, LLC unless otherwise noted). Copyright ©2022, Global Design & Publishing, LLC. Any reproduction without our written permission is prohibited.

Putnam *Today*



Putnam River Trail

Putnam's history began as a village with a cotton factory around Cargill Falls. This picturesque cascade is the key to future development. The water of the Quinebaug River once powered textile manufacturing which brought with it jobs, new houses, stores and related businesses. Sturdy business blocks that line the downtown streets speak to the commerce of an earlier era now form the building blocks



for Putnam's redevelopment as a destination for dining, shopping, and entertainment. The renovation of the Lofts at Cargill Falls

(the former Hale Manufacturing Company) has created residential and commercial space close to downtown. Kennedy Drive, home to professional offices and manufacturing businesses, links to the Technology Park adjacent to Interstate 395. Threading through this area is the Quinebaug River with its River Walk.



Lofts at Cargill Falls

MAHER AND COTNOIR

ERNEST J. COTNOIR, ESQ.

Services offered include:

*Real Estate • Civil Litigation • Evictions
Probate • Estate Planning • Business Organization*

Located in the KeyBank Building
163 Providence Street, Putnam

860 928-9694 • info@maherandcotnoir.com

Once fully linked to the Airline Trail, Connecticut's horizontal state park through the old railroad right of way, Putnam's open space will become part of a hiking trail system leading to the Massachusetts state line and beyond. Hikers will join everyone who has already discovered that Putnam is an exciting destination.

Putnam Economic and Community Development

The advancement of Putnam as a place to live and do business are the shared missions of the Department of Economic and Community Development and the Redevelopment Agency. The team works closely with local business associations, current and aspiring businesses, community members and like-minded neighbors so that dreams can become reality...and sustainable. "Together, we provide the leadership to enrich the experiences offered to the community and our visitors," observes Delpha Very, Director of Economic and Community Development/Redevelopment.

The Mission:

The Putnam Economic and Community Development Commission supports and encourages the commercial, industrial, agricultural, community and civic well-being of Putnam by supporting existing enterprises, attracting desirable and appropriate development while fostering a strong local economy and better quality of life for our neighborhoods.

Welcoming Growth & Change

Putnam's administrative team recognizes that the legacy of the past is a tremendous opportunity. Emblematic of its optimism is the new municipal complex at 200 School Street (the intersection of U.S. 44 and Providence Street--CT Route 171), completed in September 2021. Formerly scattered services have been brought together under one roof: all town offices, including the Office of Economic and Community Development, the public library, Aspinock Historical Society, and a community center with spacious meeting rooms. Fully ADA compliant, the main hallway is also a gallery where community artists show their work in a rotating series of exhibitions.

Recreational green space, displaced by the Municipal Complex has been transferred to other town-owned property closer to existing sports fields.

Union Square, with its revitalized Railroad Station, is home to lively venues where local brews and unique dining are on tap. Alfresco dining is a seasonal feature.

Manufacturing and technology businesses can find a home in Putnam with dedicated development sites in the Industrial Park and Regional Technology Park.

At every turn, Putnam invites a second look. It is building for the future in a community steeped in history and rich with opportunity.



be heard
your voice is powerful at Pomfret

We are a private high school for boarding and day students located in Northeastern Connecticut. In 2022, Pomfret was ranked one of the top independent schools in the country.

Learn more at Pomfret.org.

To arrange for a tour and interview, call our Admissions Office at 860.963.6120 or email admissions@pomfret.org.



Tax Incentive Program

- Open to businesses located within the Enterprise Corridor Zone. Call the Economic Development office to see if your business location is listed.
- The Town offers a deferral of increases in property tax within the designated Rehabilitation Area based on improvements that increase the value of the property.

ECONOMIC DEVELOPMENT GOALS

- Expand and diversify the commercial and industrial tax base
- Recruit new business
- Nurture and retain existing businesses
- Promote Locally Grown business enterprises
- Promote entrepreneurialism, social and economic equity

COMMUNITY DEVELOPMENT GOALS

- Manage growth and change within a strategic plan to achieve the best possible sustainable outcomes for development

- Develop integrated growth that expands the vibrant Downtown to include the Providence Street area
- Enhance residential and commercial areas



REDEVELOPMENT AGENCY GOALS

- The greater Downtown area will remain the community center offering a place for social contact, governmental, arts/cultural, and economic activities
- Continue to expand Putnam's business footprint
- Encourage infill development in prime redevelopment areas (Providence Street Phase 2)
- Market and promote historic mill preservation and redevelopment
- Incorporate expansion of walking trails and outdoor experiences in messaging

Putnam's Recent Accomplishments



- New sidewalks and paved city parking lots developing infrastructure
- Celebrated the opening of the Lofts at Cargill Falls
- Wayfinding Signage for Putnam and Beautification Accents
- Farmer's Market Pavilion and Saturday Farmer's Markets
- Senior Market Voucher program funded by CT Dept. of Agriculture
- StoryWalk stations along the River Trail offer a changing library of stories and the gift of literacy in the outdoors to children and adults
- Sculptures and outdoor mural enhance existing public art
- Robert R. Johnson Community Garden

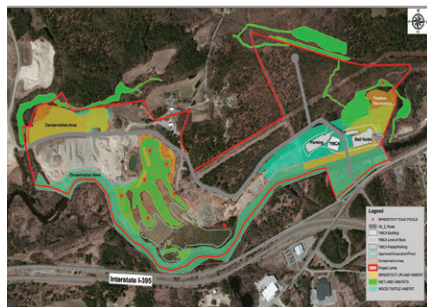
- Connecticut Main Street "Founders" Award recognition of commitment to Downtown Putnam
- Applied Preservation of Place grant design guidelines
- Façade improvement projects at 88 Main Street and using Downtown CDBG funds
- Successful application for Making Places grant for historic Belding Mill
- Creation of the Putnam Arts Council: "the voice of the creative workforce"
- Funded hazardous materials cleanup and demolition of the former Putnam Foundry property to prepare for redevelopment

On The Agenda

- Continue to seek grants for linking the Airline Trail System from Pomfret to Putnam with future plans to connect to Thompson trails
- Seek grant funding for revitalization of Providence Street
- Create plans and partnerships for landscaping and gardens throughout Downtown
- Update plans for development as mandated by State of Connecticut
- Commission studies to generate data to prioritize what will make the greatest impact in our community

The Quinebaug Regional Technology Park

It is not a coincidence that the Quinebaug Regional Technology Park is also the home of the Hale YMCA. The community response to the Y has shown that the community commitment to work-life balance is strong.



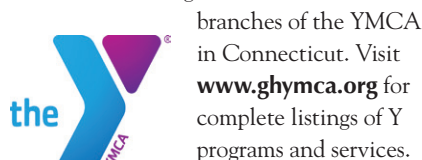
The Quinebaug Regional Technology Park (The Q) has many things going for it. Located at Exit 45 on I-395 that intersects with Kennedy Drive and Park Road, it is linked to the rest of New England and beyond, and also to Putnam's Main Street and more. The Q is the southern anchor of Putnam's business core.

The site has direct highway access via I-395 to Worcester (20 miles), Providence (30 miles) and Hartford (50 miles). Boston is 74 miles north and New York 174 miles to the south. Approximately 267 acres, the technology park represents a regional investment and revenue-sharing association of the Towns of Putnam, Pomfret, Brooklyn and Scotland. Its infrastructure, a dedicated bridge and Technology Park Drive (28' wide) connect the lots with Kennedy Drive. At presents, lots remain and for the future, additional acreage is approved for subdivision.

The Hale YMCA Youth and Family Center

Just across the bridge is a stunning contemporary building in a park-like setting with indoor facilities that include pools and gyms, along with a robust schedule of exercise and wellness programs. The activities are designed for youth and adults,

and include individual and group fitness, swimming, and other popular team sports. Outdoor activity programs experiences include the summer day camp - Camp Cutler at the Y - and nearby Woodstock, which offers traditional camp activities in a pristine lakeside setting. With strong community support, Hale YMCA has rapidly grown into one of the largest and most successful



branches of the YMCA in Connecticut. Visit www.ghymca.org for complete listings of Y programs and services.

Cargill Falls Mill Project

In the heart of Putnam, the Lofts at Cargill Falls Mill are now renting. The revitalized site, where Connecticut's textile industry was born, blends classic mill architecture and landscaping with the benefits of modern living. The 82 spacious one- and two-bedroom rental apartments with amenities revitalize the classic with a modern touch. Stunning hardwood floors and natural wood beams bring history to life in every apartment; over-sized windows bring in plenty of natural light and scenic river views. Spaces are available for a mix of commercial uses, retail and office space. It is the first sustainable, mixed-use development in Connecticut with its own hydroelectric power plant. www.cargillfallsmill.com

Riverfront Renaissance

Rotary Park, Murphy Park, the St. Marie-Greenhalgh Sports Complex, adjacent to the new Owen Tarr Field, and Rawson Field are all locales for outdoor recreation in Putnam. Simonzi Park includes a trailhead for paddlers on the Quinebaug and Little

Rivers. Walkers and runners enjoy the scenic River Trail. Community team sports include NECONN Soccer, softball leagues, and WPTP Junior Football. For schedules and contact information for seasonal youth and adult leagues, contact www.putnamct.us/departments/parks-and-recreation.

The bandstand at Rotary Park is the venue for outdoor concerts, often in conjunction with either the River Fire or the Fourth of July fireworks.

Road Races

First 'o the year is the *O'Putnam a 5K* race that starts and finishes in downtown Putnam with a run along the Putnam River Trail along the Quinebaug River passing Cargill Falls. This is an event of the Hartford Marathon Foundation and takes place on the Sunday before St. Patrick's Day, hence the Irish theme.

Tackle the Trail is a marathon for individuals and relay teams that starts in Windham or Pomfret (half-marathon) and ends at Putnam's Hale YMCA. Proceeds from this race support student aid at Quinebaug Valley Community College in nearby Danielson. ("The Trail" is the former Airline railbed, now the Airline Trail State Park.)

The Day Kimball Healthcare Walk and Race held in August benefits the Northeast Connecticut Cancer Fund. This event includes a five-mile walk/run and a half-mile fun run for kids. This is a longstanding community event that supports Day Kimball Healthcare.



Photo by Caroline Sloat

Main Street & Putnam's *Downtown Crossroads*

The downtown footprint might be small, but its historic buildings offer a lively mix of things to do and places to eat. Dining, arts, retail shops, and personal services draw visitors to Putnam, northeast Connecticut's commercial hub. Parking is convenient and free; downtown signage is clear; its scale is comfortably walkable. The vibrant Main Street scene welcomes visitors and residents.



Historic Downtown

From bustling Union Square to the Post Office, Putnam's Main Street is a vibrant mix of restaurants and stores. Antiques Marketplace with its three floors to explore is a longtime highlight of the area, along with other antiques shops. With its unique retail offerings and a wide range of dining and entertainment venues, Main Street is the beating heart of Putnam.



Outdoor patio dining, long a feature of Putnam's restaurant scene, has been expanded into a second downtown block, extending the lively atmosphere from lunch into the evening. A stroll down the hill leads to the Quinebaug River, an appealing place to walk—or run—with views of Cargill Falls, the water, and historic mill buildings. It's a place to have lunch and, when scheduled, enjoy entertainment and events at Rotary Park and the Bandstand. The Putnam River Trail and the River Mill Heritage Trail offer a little

exercise, a little education with its engaging Story Walk for children, and restful scenery. Riverfront Commons is accessed either from Main Street past the Post Office or the riverside trails. There, more shopping, dining, banks, and the Price Chopper grocery store are found.

Shopping *Antiques*

Putnam's revival began with antiques



shops. Antiques Marketplace, a longtime highlight of the area, has three floors of shops to browse. Jeremiah's Antiques and Collectable Shoppes buys and sells "something for everyone."

Adriaenz Auction runs several timed online auctions every month www.facebook.com/Adriaenzauction. Expect to find an eclectic range of items from furniture to many categories of collectibles and estate items, plus tools and appliances.

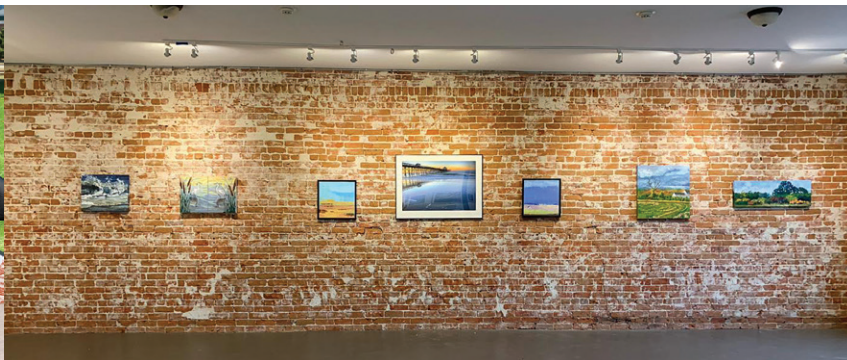




Advanced
Back & Wellness Center
...healing from the core

Dr. Debra A. Burns
CHIROPRACTIC PHYSICIAN

860.928.2292
21 South Main Street
Putnam, CT 06260
quietcornerchiro.com



Arts

Putnam is a destination for the arts. Arts & Framing offers custom picture framing and a little art gallery of local artists, sharing the space with Twigs and Pearls (handmade Jewelry, soaps, scents, and unusual gifts). Block 134 is a community arts and wellness co-op. It is home to the Silver Circle Art Center that offers classes, a gallery, and a shop all featuring local artists. The space includes art studios for rent, large spaces for workshops, yoga classes, private parties, gatherings and events. The Complex Performing and Creative Arts Centre is a community arts education hub, offering classes and performance opportunities in dance, theater, art, and music. The conservatory program enables students to work in multiple art forms or study a single genre intensively. Sawmill Pottery, open daily, is a working studio that offers classes and workshops for all ages and abilities. The onsite gallery showcases the work of ceramic artists living in northeast Connecticut.

Performance

A community theater in a historic vaudeville building, The Bradley Playhouse offers a full season of locally-produced performances - musicals, dramas, and comedies. The season has something for every member of the family. Scott Higgins brings in his New England Comedy All Stars show several times a year.

More than a bar with food, The Stomping Ground features live music six nights a week. For the performers: www.the-stomping-ground.com

From morning coffee to a late night cocktail Saw Dust Coffee House and Dessert Bar, now in Putnam hosts acoustic music on Friday and Saturday evenings and Sunday daytime. www.sawdustcoffeehouse.com

Dining

The retail creativity extends to the dining establishments, whether you choose to eat in, alfresco, or even take out to eat

in the park - or at Bare Hands Brewing Company! www.bearhandsbrewing.com. Restaurants in the center of town. 85 Main offers fine dining - sushi, raw bar,



Nestled on the banks of the Quinebaug River in northeastern Connecticut, the town of Putnam boasts an 'Arts & Al Fresco' motif. An easy & scenic drive to a walkable downtown filled with restaurants, bars, cafes, art galleries, boutiques, theater, year-round events and more. A small town with BIG happenings! What will you discover?...



www.discoverputnam.com | putnambusiness.org | putnamct.us



ENCHANTED
JEWELRY SINCE 1985

shop@enchantedjewelryct.com • www.enchantedjewelryct.com

Shopping • Design & Consult • Care & Repair



Enchanted Jewelry specializes in assisting you with choosing or creating memorable gifts of fine jewelry by offering a boutique-like, comfortable atmosphere, personal shopping assistance and a guarantee of quality.

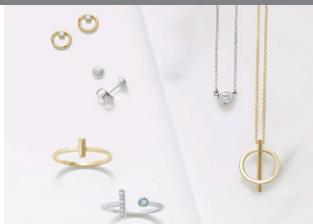
"With your design inspiration and our fine jewelry expertise, we make Enchanted Jewelry!"

**Mention this ad for a free gift when visiting us!*

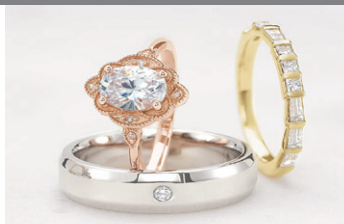
Thank you for shopping local & for choosing us!



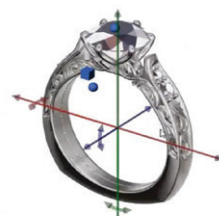
Fashion Jewelry



Engagement Rings



Custom Designs



Now located at: 131 Norwich Road Plainfield, CT 06374
Call or text us at: (860) 317-1014
Appointments Encouraged; Walk-ins Always Welcome!



local catch seafood - in a casual atmosphere www.85main.com, The Courthouse Bar & Grille summons patrons for arresting food and drink www.courthousebarandgrille.com, The Broken Crust, a cozy boutique style restaurant with salads, sandwiches and pizza www.thebrokencrust.com, The Hare and The Hound www.thehareandthehound.com is an Irish pub with an eclectic menu, The Crossings Brew Pub www.crossingsbrewpub.com in Putnam's former rail station serves pub fare with burgers that feature Angus beef. Jessica Tuesdays is a home-style restaurant in the historic Adams Express building with a seasonal track-side outdoor patio www.jessicatuesdays.com. Elizabeth's Farmhouse is a charming dining spot with rustic décor and a curated menu with such local favorites as Kung Pao Brussel Sprouts and Rhode Island Stuffies and Red Barn Meatloaf, along with traditional salads and entrees www.elizabethsfarmhouse.com. Recently landed, is the Jetsons-inspired Painted Baker Café, with breakfast and lunch in a mid-century setting (**Find them on Facebook**). Visitors are advised to checking opening times before planning a visit. Other dining establishments may be found in a wider circle beyond downtown.



Fun Stuff

Skeeter's Toy Box, not your Big Box toystore, offers a curated collection of toys and games to inspire children to play, learn and explore. And LEGO kits and sets, too! August and March Home intrigues with one-of-a-kind décor and accessories - traditional, vintage and modern. The freezers at Main Street Gelato are filled with colorful and tasty artisanal gelato, small batch gourmet ice cream, sorbetto and Italian Ice. Dairy-free and vegan frozen treats as well.



Community Events

Fire and Ice Festival

The February Valentine Festival! Area businesses commission more than sixty pre-carved ice sculptures to display along the sidewalks. The centerpiece is the largest single ice-block competition in the United States with live professional ice-carving demonstrations, a 30-ft inflatable igloo, cake competition, fire performances, and glowing fire torches.

www.discoverputnam.com

First Fridays

(May through October) Each month on the first Friday of each month from 6:00 to 9:00 pm expect to find themed outdoor activities throughout

downtown Putnam. Wander through the closed streets on the lookout for dynamic performance art and installations and participate in family-friendly community art projects; there will be something for everyone to enjoy! While you are in town, choose from our variety of wonderful restaurants, visit our many shops and boutiques,

and listen to our local musicians play lively music. Check the website for updates and information about participating as a vendor www.discoverputnam.com.

July 4 Fireworks

Putnam's fireworks Park display rivals those of many larger towns and draw crowds of up to 5,000. Preceded by musical performances in the Bandstand this 30-minute show can be seen from most streets in town, but the best views are along the banks of the Quinebaug River and in

Rotary Park, where you can also picnic. Call the Town Hall or check the website for display and rain dates.

www.putnamct.us

Main Street Car Cruise

This annual event on the second Sunday afternoon in August brings more than 2,000 classic and antique cars to Putnam. Thousands of visitors gather to explore the streets and shops of Downtown Putnam and view the shiny autos, talk to owners, meet race celebrities and watch demonstrations like burnout pits. The event offers food, music, raffles and more.

www.discoverputnam.com

Great Pumpkin Festival

(Fall Festival)

The third Saturday in October includes a full day of events, such as a scenic Train Excursion, Flea Market, Craft Fair, Pumpkin Carving Contest, Clowns, Face Painting, Food Court, Artists Exhibition, and live music. Enjoy pumpkin-themed specials offered by local restaurants.

www.discoverputnam.com

Holiday Dazzle Light Parade

Join the local community to build - or watch - the parade of about 100 brightly lit floats plus marching bands and walkers traveling a 1.5 mile route through downtown Putnam. The Holiday Dazzle Light Parade kicks off the holiday season the Sunday after Thanksgiving.

The Voice of the Community

Locally owned WINY 1350 AM and 97.1 FM and WINYRADIO.COM is Eastern Connecticut's radio station for talk, news, weather and sports.



Phone: (860) 928-2347
Fax: (860) 928-1885

320 Pomfret St. Putnam, CT 06260
(Located inside of Day Kimball Hospital)

*Proudly serving healthcare
employees and their families in
Northeastern Connecticut
since 1965.*

Check out our NEW website!
www.NECTHealthcareCreditUnion.org

ATTORNEY MICHELE ANN PALULIS, LLC



**Friendly compassionate
legal services for you and
your loved ones.**

158 Main Street, Suite 2 • Putnam CT 06260
(860) 928-9928 • michele@attorneypalulis.com



**Breakfast
Lunch & Dinner
Daily Specials
Beer & Wine
Outdoor Patio**

Connecticut's Best Country Cafe *Yankee Magazine*

450 DEERFIELD ROAD POMFRET, CT 860.928.1562 | thevanillabeancafe.com

PERFORMANCE FOR THE PLANET. SUPPORT FOR PUTNAM.

At WIN Waste Innovations, giving back to the communities where we live and work is fundamental to all we do. From creating renewable energy to supporting communities like Putnam, we're helping make the world a healthier, safer and more vibrant place to call home.



To learn more about our commitment to our communities and the environment, please visit www.win-waste.com.



PERFORMANCE FOR THE PLANET

©2022 WIN Waste Innovations. All rights reserved.

Educational *Opportunities*

Putnam is fortunate to be well served with learning opportunities nearby for students of all age levels. The individual websites should be consulted for the most current information.

PUTNAM PUBLIC SCHOOLS

The Putnam Public School System enrolls almost 1,300 students in an elementary, middle and high school. The mission of the Putnam Public Schools, in partnership with the community, is to empower all individuals and inspire them to become lifelong learners and engaged citizens by providing a diverse and meaningful educational experience. For the second year in a row, Putnam High School, which just completed a renovation for the 21st Century.

www.putnamschoolsct.org

PRIVATE AND PAROCHIAL OPTIONS:

Marianapolis Preparatory School

An independent, Catholic, boarding and day school located in Thompson, CT. Here, students in grades 9-12 and postgraduates live and learn alongside faculty members, embrace growth through a liberal arts curriculum rooted in experiential learning, make a social impact through community service, and graduate as confident, engaged citizens, ready to lead in an ever-changing world. A 100% college acceptance rate. Explore all that Marianapolis has to offer online at www.marianapolis.org

Pomfret School

Founded in 1894, Pomfret is a small independent boarding and day school serving grades 9–12 plus postgrads. Set on a stunning 500-acre hilltop in Northeastern Connecticut, our students come from around the country and the world to find purpose and meaning in their lives through a transformational educational experience. In 2022, Pomfret was ranked one of the best private high schools in America. To see how we're inspiring the next generation of change-makers and problem solvers. www.pomfretschool.org



Putnam Science Academy

PSA is a private co-educational boarding and day school serving students from grades 8-12 and post graduates. PSA offers a comprehensive college preparatory program focusing on arts, science, mathematics, and technology. This small structured school delivers a solid educational program and enrolls students from more than 30 countries from around the world. With a 100% college placement rate, most of our student athletes move onto Division I or II schools with scholarships.

www.putnamscience.academy

The Rectory School

An independent, co-ed junior boarding (Grades 5-9) and day (Early Childhood-Grade 9) school. With support, guidance, attention, and belief from the adults who surround them, Rectory students do the hard work to not only understand themselves but also to be a part of an active and diverse community. At Rectory, we build a foundation of core academic skills, create powerful learning experiences both inside and outside the classroom, and foster strong ethical and social values. The result is students who understand themselves and the world around them. Rectory students aren't just ready for their next school; they are ready for life.

www.rectoryschool.org

The Woodstock Academy

Founded in 1801, The Woodstock Academy is a day and boarding independent town academy serving students in grades 9 – 12 and post graduates from the local area, across the United States, and around the world. The Woodstock Academy prepares all students by providing diverse opportunities through a rigorous curriculum and a variety of programs in order to cultivate the necessary skills to become lifelong learners and global citizens.

www.woodstockacademy.org

Quinebaug Middle College

Located on the campus of Quinebaug Valley Community College, QMC is a magnet high school offering a middle college experience for students in grades 9 – 12 who are ready to take greater ownership and responsibility for their own learning. With its dedicated faculty and staff, students interested in science & technology, engineering, math, liberal arts, allied health and advanced manufacturing careers are prepared for success in college or career.

www.eastconn.org/qmc

POST-SECONDARY EDUCATION:

Quinebaug Valley Community College

QVCC provides high-quality education, workforce training, excellent services and innovative partnerships that enhance the vitality of the community and improve the quality of life for residents of northeast Connecticut. The word “community” in the college’s name reflects a strong commitment to understand and to meet the educational needs of area citizens, businesses, and industries. At QVCC you can earn an associate’s degree, transfer to a four-year college or university, begin or advance your career, or enrich your life through lifelong learning.

Healthcare & Wellness

Day Kimball Healthcare is the community hospital in Putnam, a nonprofit provider of integrated healthcare services in northeast Connecticut and nearby Massachusetts and Rhode Island. Since its founding in 1894, Day Kimball has provided high quality, compassionate care close to home. Health care is provided by Day Kimball Hospital, Day Kimball Medical Group, Day Kimball HomeCare, Day Kimball Home-Makers, Hospice and Palliative Care of Northeastern Connecticut, and healthcare centers in Danielson, Dayville, Plainfield, and Putnam. Day Kimball recently celebrated 125 years as the community's leading medical provider. www.daykimball.org



Photo courtesy of Day Kimball Hospital

OTHER HEALTHCARE SERVICES:

The Center For Bone & Joint Care

The Center For Bone & Joint Care specializes in the care of the muscular and skeletal systems and offers services in sports medicine, hip and knee, foot and ankle, hand and elbow, spine and shoulder and joint care as well as osteoporosis programs. The Center's Board Certified orthopedic surgeons are exceptional doctors that work with an outstanding hospital and staff at Day Kimball Hospital.

www.bonejointcare.com

Advanced Back & Wellness Center

The mission of Advanced Back & Wellness Center is to educate as many people as possible about the benefits of chiropractic care as it relates to the health of the spine and nervous system. Dr. Debra Burns has

many unique treatment therapies including nutritional counseling, pregnancy and pediatric chiropractic, stress reduction and many more. Applying the secrets of wellness and prevention will make an impact on your entire health picture.

www.quietcornerchiro.com



Generations Family Health Center

Generations Family Health Center, Inc. is a private, not-for-profit, regional Federally Qualified Health Center (FQHC) that has been serving eastern Connecticut since 1984. Generations provides a full continuum of primary health care, oral health care, behavioral health care and case management and educational services to a primarily medically underserved population through sites in Willimantic, Norwich, Danielson and Putnam.

www.genhealth.org

Natchaug Hospital

Natchaug Hospital, a division of Hartford Health Care, provides behavioral health services including mental illness, substance abuse, and learning disorders for children, adolescents and adults across eastern Connecticut. The hospital operates a 57-bed facility in Mansfield Center, Connecticut, that annually provides inpatient care for more than 650 seriously emotionally disturbed children and adolescents as well as 1,300 adults in crisis. Natchaug Hospital's Journey House program is a 13-bed specialized residential treatment facility on the Mansfield campus for adolescent girls ages 12 to 18

who are involved in the court-system. Natchaug's Day Hospital, after school and special education school programs serve more than 2,750 children, adolescents and adults in their own communities each year.

www.natchaug.org



www.quietcornerinn.com

Newly Renovated • Cable TV with HBO
Non Smoking Rooms • Micro/Fridge Available
Air Conditioned • Hairdryers In All Rooms
Free Highspeed Internet • Restaurants/Shopping Nearby



Exit 37-W Off 395 • Rt. 6

Major Credit Cards Accepted
Minutes From Foxwoods Casino & Mohegan Sun

860-774-9644

479 Providence Rd. (Rt. 6) Brooklyn, CT

Renee's Bistro & Catering SERVICE

*A Casual neighborhood spot offering
"fresh home-made" meals and
"made from scratch" desserts located at
142 School Street. Dine in or Grab N Go.*

Corporate Catering and Catering of all types are
our specialty. You will love how accommodating
Renee's is for all your last minute needs!

142 School Street, Putnam, CT 06260

ReneesBistroandCatering.com

Or contact us by phone 860-412-9365 or
email: support@ReneesBistroAndCatering.com



Your Life, Your Bank, Your Community

Since 1873

Jewett City Savings Bank

233A Kennedy Drive, Putnam

860-928-0144 • JCSBank.com

Member FDIC

We're right in your neighborhood!

- Home
- Auto
- Life
- Business



You buy better at Byrnes

byrnesagency.com



Congregational Church of Putnam

Rev. Norman A. Michaud

(c) 603-812-1161 • namichaud@comcast.net

175 Main St., PO Box 463 • Putnam, CT 06260

(860) 928-4405 • putnamcongchurch@gmail.com

Sunday Worship 10:00 am

WOODSTOCK BUILDING ASSOCIATES, LLC

The Leader in Design-Build

WOODSTOCK, CT

3 Route 171

860-928-0897



FRANKLIN, MA

15 Main Street, Suite 11A

508-570-4853

From design to completion, our architects, designers, estimators, project coordinators, superintendents, carpenters, and plumbers work as a team to ensure consistently superior craftsmanship for your project. Design and building costs are tailored to fit your needs without compromising quality. If you are looking for an experienced, organized, professional, and cost conscious design-build company, call Woodstock Building Associates today!



REMODELING - NEW CONSTRUCTION - KITCHENS

BATHS - ADDITIONS - PLUMBING AND HEATING

MA Home Improvement Contractor #119085 - MA Construction Supervisor #111269
CT Home Improvement Contractor #565903 - CT New Home Construction Contractor #160

YOU'LL LIKE OUR APPROACH TO INSURANCE!

GERARDI INSURANCE

www.gerardionline.com *Services, Inc.*



Graphic Design & Printing Solutions!

124 School St. • Putnam, CT 06260

860-928-3973 • www.chasegraphics.net

We make you
SHINE

Let us **SHOW YOU**
the **ADVANTAGES**
BUYING locally!

Proud Members of
the following organizations:



2021 Putnam Business & Community Guide Printer



ARCHAMBAULT INSURANCE ASSOCIATES



Marc and Tom are the third generation owners of Archambault Insurance. Family and Community are priorities which they bring to work every day.

– Marc & Tom Archambault
President & Vice President
Archambault Insurance Associates

REAL PEOPLE. GREAT SERVICE.

Our Family, here for you since 1928.

143 Providence St., Putnam, CT 860-928-0811

www.ArchambaultIns.com

