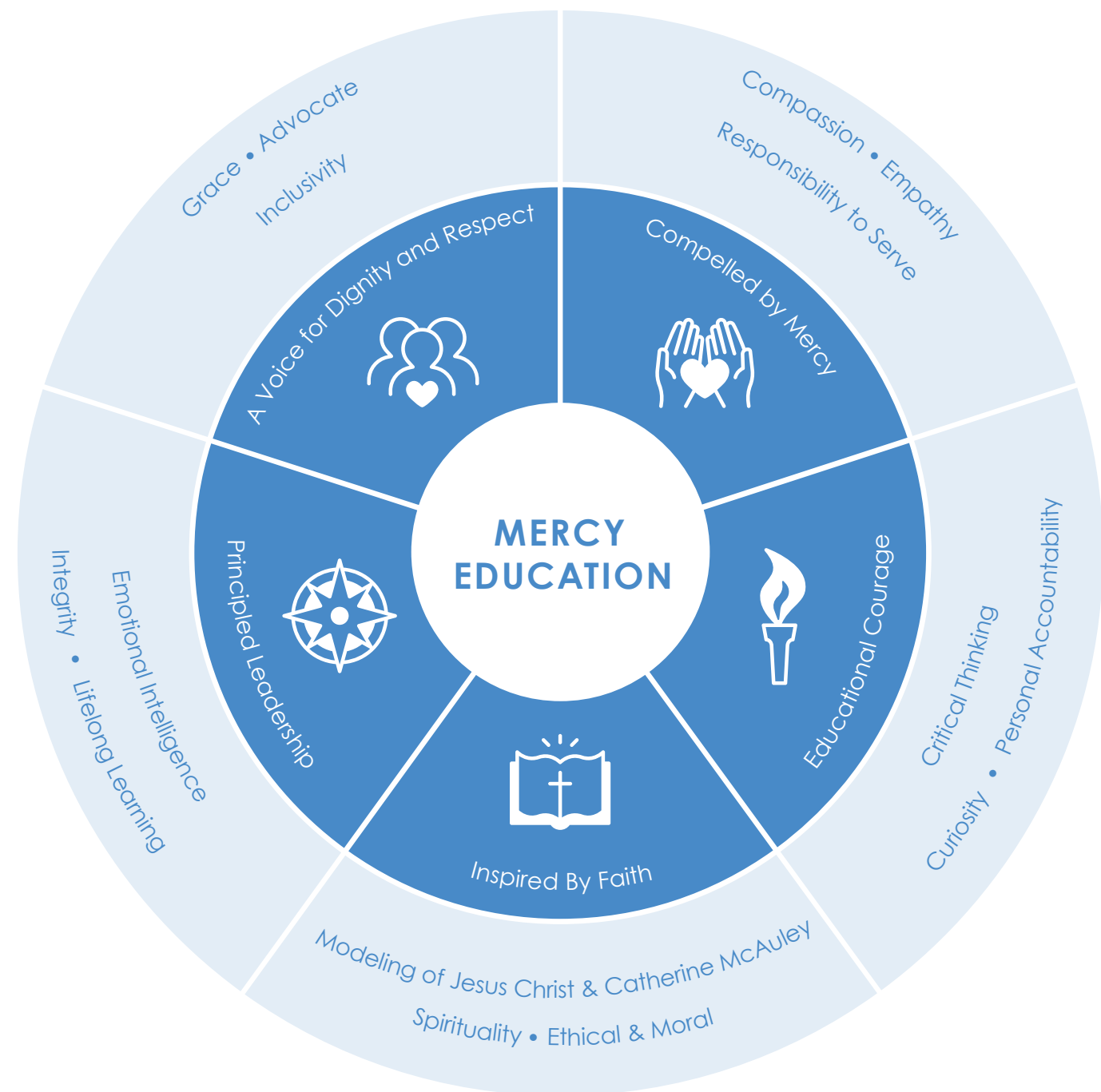


PROFILE OF THE GRADUATE

A Journey of Student Development

This is the culmination of everything a Mercy Education hopes to achieve. This blueprint defines the attributes that support our Core Values and the steps students take to gain them.



CORE VALUE • STUDENT ATTRIBUTES



Compelled By Mercy

Compassion. Having concern for the needs of all, including those outside our immediate circle.

Empathy. Putting yourself in someone else's shoes to understand their feelings and perspectives.

Responsibility to Serve. Fulfilling the duty to not just care about others, but to take action on their behalf.



Educational Courage

Curiosity. Being open to other ways of seeing the world and exploring new ideas.

Personal Accountability. Staying disciplined in decision-making, proactive in correcting mistakes and self-motivated in our studies.

Critical Thinking. Gathering and objectively evaluating and analyzing information through reflection and reason.



Inspired By Faith

Spirituality. Developing a personal relationship with a loving, merciful God, expressed in service and respecting other faiths.

Modeling of Jesus Christ & Catherine McAuley. Living life with abundant love, compassion, generosity and hospitality, demonstrating the strength of infinite mercy.

Ethical & Moral. Following a personal code based on Gospel values that guides action and choices.



Principled Leadership

Integrity. Standing up for or doing what's right, including when it's difficult or unpopular.

Lifelong Learning. Always learning something new, gaining skills and wanting to know more, in all walks of life.

Emotional Intelligence. Recognizing and welcoming emotions within ourselves and others to build resilience and healthy relationships.



A Voice For Dignity and Respect

Grace. Allowing others to be fully human without judgment, while honoring what is God-like within each person.

Advocate. Being a forceful defender, supporter and sometimes spokesperson for the values and people we hold dear.

Inclusivity. Going beyond tolerance to embrace diversity, while accepting and serving with open arms.