



NEW PARADIGM LOVING ACADEMY

School Pledge

Right now today, this very moment, I am capable of giving myself, the gift of absolute self-assurance, self belief, and powerful non-stop confidence in myself

FAMILY

VOLUME 19

WEEK OF 1/16/2023

To, Through, and Beyond College

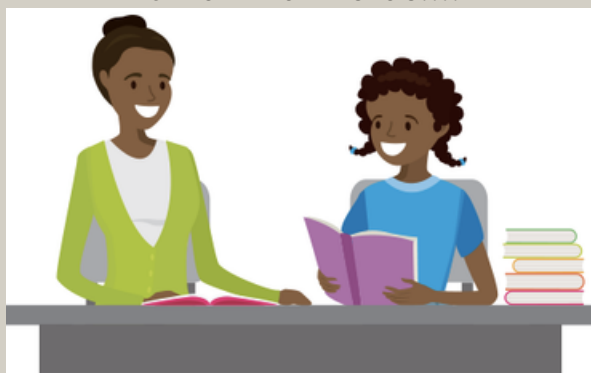
"Impact and Outcome"

Happy Monday Families!!!

We have concluded 99% of our NWEA district assessments in reading and math on last week. Many of the students were able to meet their growth target scores. Other students were so close, but with more academic support, they will be able to meet their Spring goals. A number of students are arriving tardy daily, which is impacting their reading grades and success. Students need to be in school on time daily and in complete uniform (white shirt, navy pants/skirt, and black shoes). A white long sleeve shirt can be worn under the uniform shirt as the weather has changed. As a reminder, doors open promptly at 7:50, students are tardy at 8:05, and breakfast ends at 8:05 as well. If you have any questions please reach out to me at aringo@npfeschools.org or send a message to (313) 751-8533.

Ms. Ringo
Principal

Reading with your student daily will help increase their vocabulary, comprehension, and pronunciation of unfamiliar words!!!!



Weekly Reminders

Monday- No School M.L. King Day

Tuesday- C3 and RR sent home

Virtual tutoring begins from 4:30-5:30 @Loving

Wednesday- Read with your student for 20 minutes

Thursday- Virtual tutoring from 4:30-5:30 @ Loving

Friday-C3 and RR is due and NWEA reading make up tests

1/25- Half day of school on dismissal at 11:30

1/27- End of 2nd Quarter

Instructional priorities

Reading, writing, and discussion in all content areas to provide cohesive instruction and opportunities for productive struggle.

Provide effective feedback to students that affirms what they have done well and guides them toward academic improvement and achievement of learning goals.

Study and leverage student-level data on a regular and consistent basis to identify learning opportunities and create plans to address them.

Use rubrics as tools to provide a shared language with clear guidelines and expectations to provide a measure, adjust, and evaluate learning

Safety First!!!!!!

As a reminder, all parents and visitors who arrive on the campus of Loving Academy are to adhere to the conduct and rules governed by New Paradigm for Education. Disruptive behavior is prohibited at all times and all cases will be individually addressed. Please be respectful and continue to model the behavior we expect from the students.



Shout out to all the students who met or exceeded their growth targets on the NWEA district assessments in reading and math!!!!

Schoolwide Cooperative Challenge

"Use the Peace Path"

- 1. Tell the Problem
2. Brainstorm Solutions
3. Solve the Problem



Staff Contact List

Ms. Ringo, Principal
aringo@npfeschools.org

Ms. Coleman, Student Support Specialist
icoleman@npfeschools.org

Ms Ringo, First

Ms. Milton, 2nd/3rd
jmilton@npfeschools.org

Mr. Brazill, 4th/5th
rbrazill@npfeschools.org

Mr. Jackson, PE
jjackson@npfeschools.org

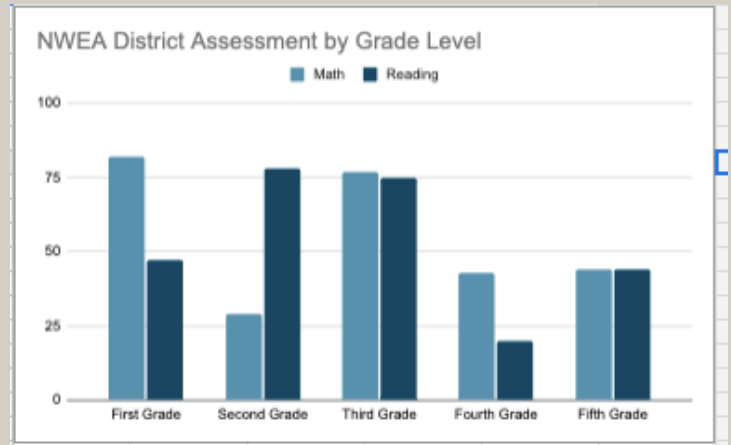
Ms. Shelman, Director of Specialized Services
nshelman@npfeschools.org

Deans List

Families, we adopted a new way of parent communication. It is used by our teachers to send out important messages in regards to behavior, grades, etc. Please take a moment to download the app or use your browser to sign up on your computer

DeansList for Families website
https://youtu.be/bS54-TbScY8
DeansList for Families Mobile App
https://youtu.be/Pof0GNOf0Rg

NWEA District Assessment Data



Resources to Support Students at Home

Edmentum.org- school intervention
Students know their log in information

https://www.khanacademy.org/-math support

https://greatminds.org/resources/products/group/eureka-parent-tip-sheets



New Paradigm Loving Academy

2022-2023 Calendar

NP Loving Academy

August 2	New Staff start date
August 8	Staff Returns
August 1-27	Staff Professional Development
August 29-Sept 1	First week ½ day for Students/Staff PD
September 2-5	Labor Day Weekend – School Closed
September 6	Return to School
September 12	Preschool First Full Day of School
September 17	Ice Cream Social
September 28	½ day for Students/Staff PD
October 5	Count Day
October 20	½ day – Parent/Teacher Conference 1p-6p
November 4	End of Quarter I
November 18	½ day Students /Staff PD
November 23-25	Thanksgiving Break – School Closed
November 28	Return to School
December 7	Parent/Teacher Conference 4:30p - 7:00p
December 16	½ day Students / Staff PD
December 19	Winter Break Begins – School Closed
January 3, 2023	Return to School
January 16	Dr. MLK Observances – School Closed
January 25	½ day for Students/Staff PD
January 27	End of Quarter II
February 15	½ day for Students/Staff PD
February 20-24	Mid-Winter Break – School Closed
February 27	Return to School
March 8	Parent/Teacher Conference 4:30p - 7:00p
March 22	½ day for Students/Staff PD
March 31	End of Quarter III
April 7	Good Friday – School Closed
April 10-14	Spring Break – School Closed
April 17	Return to School
May 29-30	Memorial Weekend – School Closed
May 31	Return to School
June 7	½ day Students / Staff PD/HS Graduation
June 16	Last Day of School for students
June 20	Last Day of School for staff

Half Day Dismissal Times

11:30 am

Calendar is subject to additional changes

7/28/2022

AUGUST 2022						
S	M	T	W	Th	F	S
	1	2	3	4	5	6
7	8	9	10	11	12	13
14	15	16	17	18	19	20
21	22	23	24	25	26	27
28	29	30	31			

FEBRUARY 2023						
S	M	T	W	Th	F	S
			1	2	3	4
5	6	7	8	9	10	11
12	13	14	15	16	17	18
19	20	21	22	23	24	25
26	27	28				

SEPTEMBER 2022						
S	M	T	W	Th	F	S
				1	2	3
4	5	6	7	8	9	10
11	12	13	14	15	16	17
18	19	20	21	22	23	24
25	26	27	28	29	30	

MARCH 2023						
S	M	T	W	Th	F	S
				1	2	3
4	5	6	7	8	9	10
11	12	13	14	15	16	17
18	19	20	21	22	23	24
25	26	27	28	29	30	31

OCTOBER 2022						
S	M	T	W	Th	F	S
						1
2	3	4	5	6	7	8
9	10	11	12	13	14	15
16	17	18	19	20	21	22
23	24	25	26	27	28	29
30	31					

APRIL 2023						
S	M	T	W	Th	F	S
						1
2	3	4	5	6	7	8
9	10	11	12	13	14	15
16	17	18	19	20	21	22
23	24	25	26	27	28	29
30						

NOVEMBER 2022						
S	M	T	W	Th	F	S
		1	2	3	4	5
6	7	8	9	10	11	12
13	14	15	16	17	18	19
20	21	22	23	24	25	26
27	28	29	30			

MAY 2023						
S	M	T	W	Th	F	S
	1	2	3	4	5	6
7	8	9	10	11	12	13
14	15	16	17	18	19	20
21	22	23	24	25	26	27
28	29	30	31			

DECEMBER 2022						
S	M	T	W	Th	F	S
				1	2	3
4	5	6	7	8	9	10
11	12	13	14	15	16	17
18	19	20	21	22	23	24
25	26	27	28	29	30	31

JUNE 2023						
S	M	T	W	Th	F	S
				1	2	3
4	5	6	7	8	9	10
11	12	13	14	15	16	17
18	19	20	21	22	23	24
25	26	27	28	29	30	

JANUARY 2023						
S	M	T	W	Th	F	S
1	2	3	4	5	6	7
8	9	10	11	12	13	14
15	16	17	18	19	20	21
22	23	24	25	26	27	28
29	30	31				

JULY 2023						
S	M	T	W	Th	F	S
						1
2	3	4	5	6	7	8
9	10	11	12	13	14	15
16	17	18	19	20	21	22
23	24	25	26	27	28	29
30	31					