

# THE IMPACT OF BEDE'S PREP ON THE NATIONAL AND LOCAL ECONOMY

## BEDE'S

CONSCIENTIOUS



**£7,891,918**

Bede's Prep total contribution to UK GDP (a measure of the value of goods and services produced in the economy).

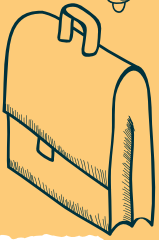


## Business

**£4,144,260**



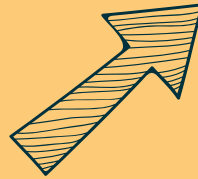
Bede's Prep total contribution to UK GDP within the Borough of Eastbourne.



**195**

The total number of UK jobs supported by Bede's Prep's school activities

**.jobs.**



of which

**127**

are within the Borough of Eastbourne.



**£2,264,322**

Total amount of UK tax supported by Bede's Prep's school's activities.



## Savings



Savings generated for the UK taxpayer, as a result of attendance at Bede's Prep by pupils who could otherwise take up a free place UK state school place

**£1,785,542**



Figures are derived from the Trust Statutory Annual Accounts 2021/22  
using the model developed by Oxford Economics.