

THE IMPACT OF BEDE'S SENIOR SCHOOL ON THE NATIONAL AND LOCAL ECONOMY

BEDE'S

CONSCIENTIOUS



£44,907,052

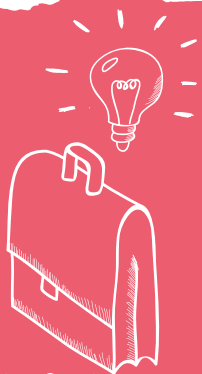
Bede's total contribution to UK GDP (a measure of the value of goods and services produced in the economy).



Business

£20,926,087

Bede's total contribution to UK GDP within Wealden.

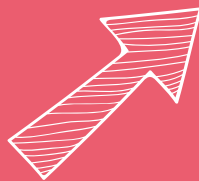


875

The total number of UK jobs supported by Bede's activities.

Jobs

of which



437

are within Wealden.



£13,270,215

Total amount of UK tax supported by Bede's activities.



Savings



Savings generated for the UK taxpayer, as a result of attendance at Bede's by pupils who could otherwise take up a free place UK state school place

£5,157,381



Figures are derived from the Trust Statutory Annual Accounts 2021/22 using the model developed by Oxford Economics.