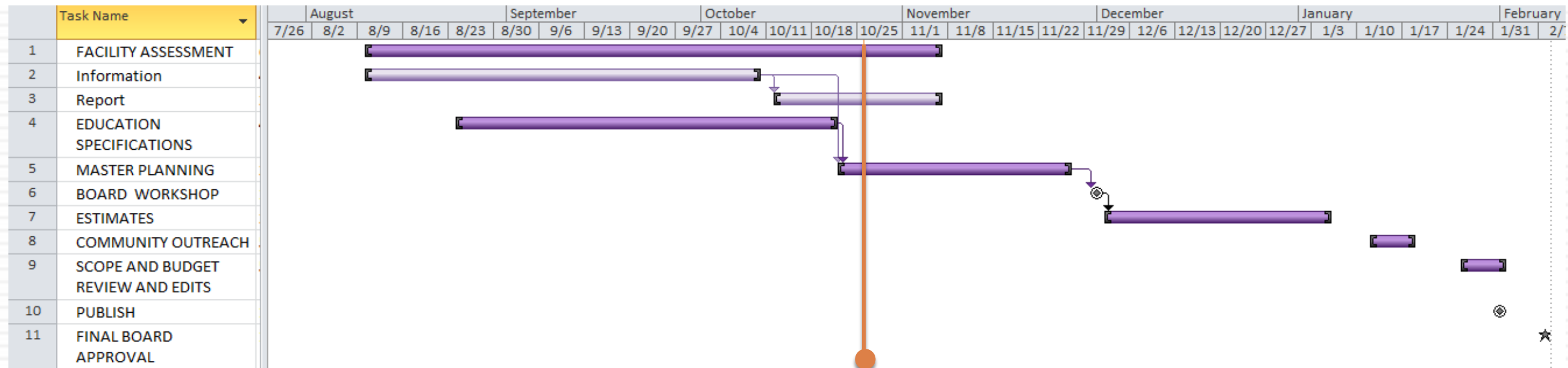


# PIEDMONT UNIFIED SCHOOL DISTRICT MASTER PLANNING



28 October 2015

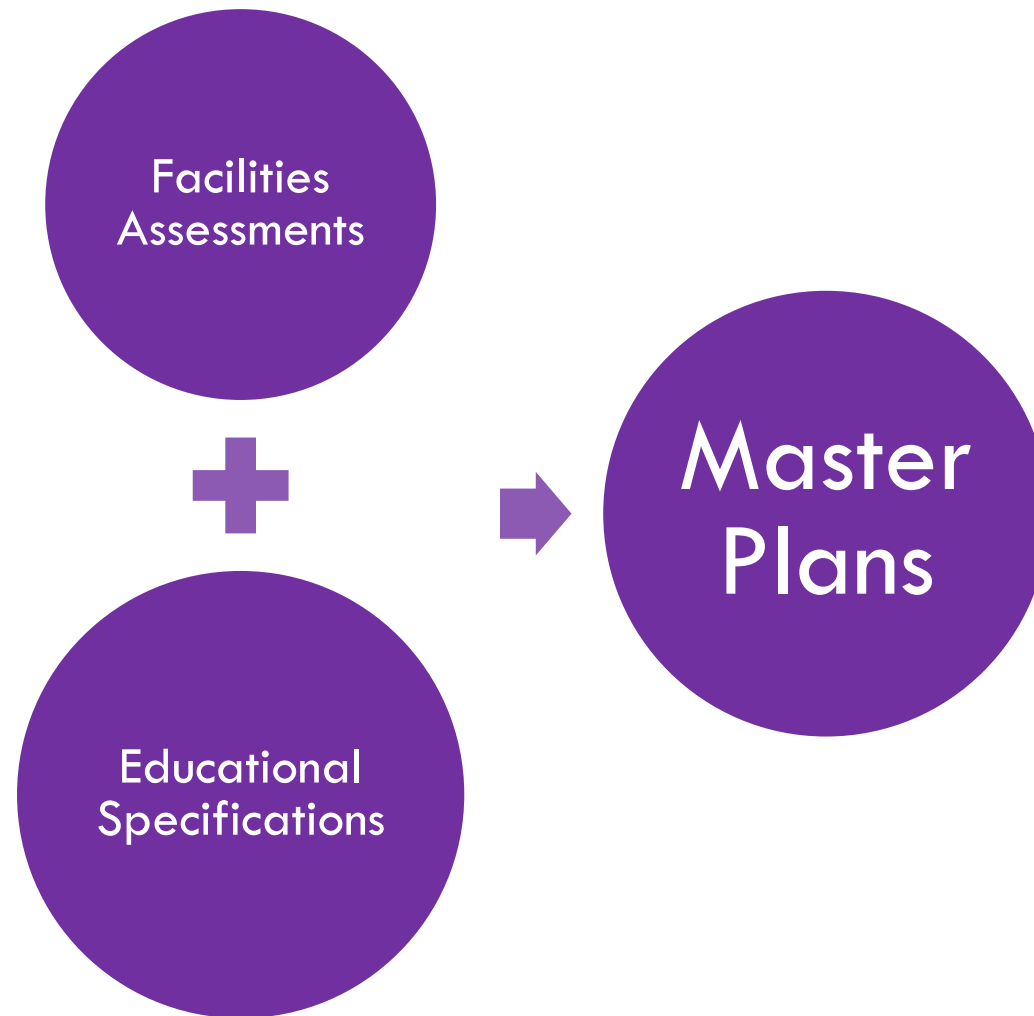


# Process

Facility Assessments: Evaluate the physical condition of the District's facilities; Identify physical, health, fire, life, safety, and accessibility issues requiring remediation.

Education Specifications: Identify needs and standardize facilities to meet the District's intended educational program at each level.

Master Plans: Develop conceptual plans to meet program needs on each school site.



# Standards and Regulations

## Piedmont Unified School District Mission & Goals

The established direction and philosophy of PUSD supporting educational goals of the District.

## California Department of Education

Guidelines and standards for Educational Facilities.

## Division of State Architect

Structural Safety, Accessibility, Fire Life Safety and Energy Compliance reviews.

## Collaborative for High Performance Schools

Facilitates the design of energy and resource efficient schools that provide a safe and healthy educational environment.



# Facility Assessment Process

## Architect

Site Walks with photographic record

Record physical condition

Code Analysis

CDE Education Appropriateness

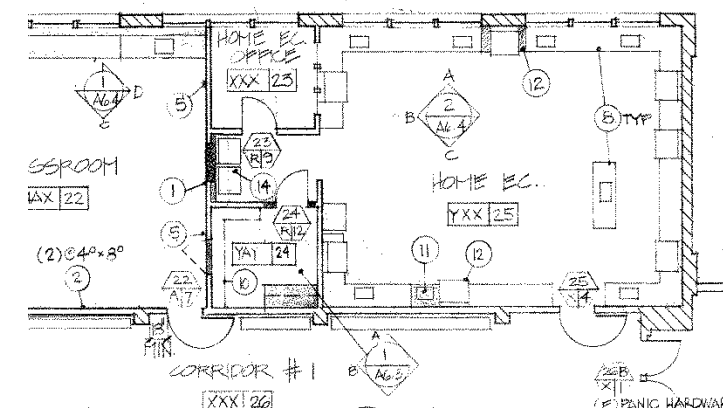
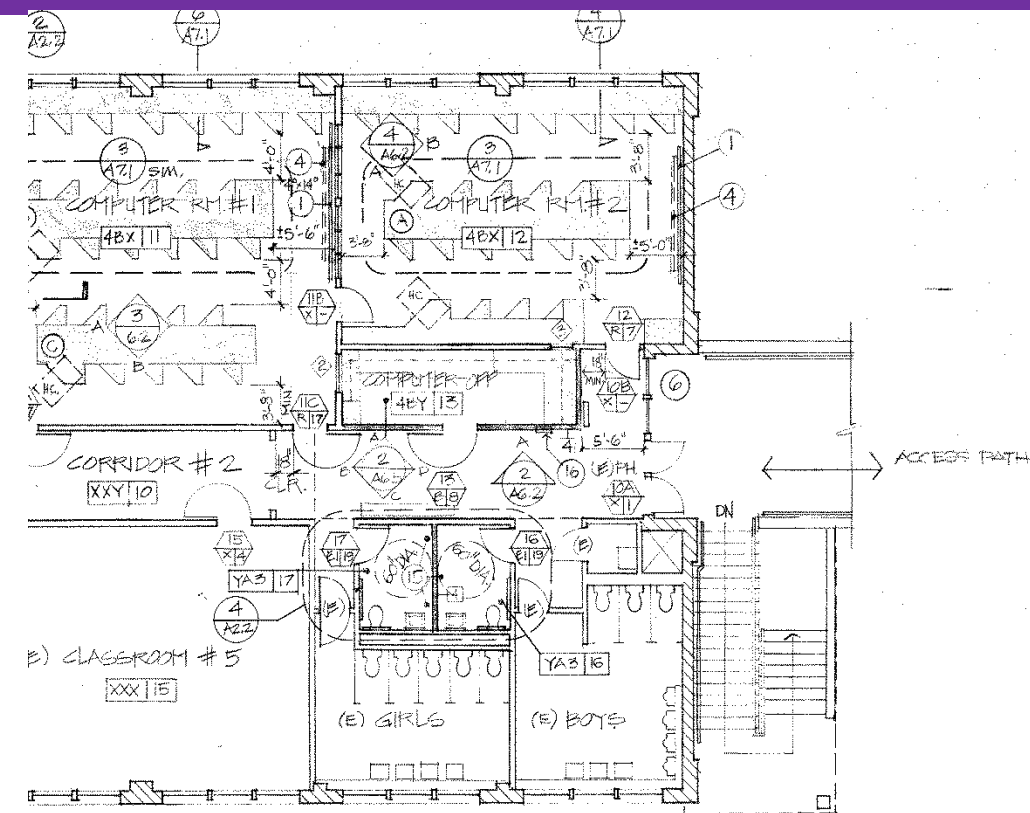
## District Archives:

Record drawings

Record documents from previous bond program

Fire Marshal review

Insurance Review



### WALL DETAIL KEY

REFER TO LISTED DETAILS FOR EACH WALL CONDITION

KEY	SEE DETAILS
1	1/A4.0, 7/A4.0
2	1/A4.0, 1/A2.2
3	1/A4.0, 7/A4.1
4	1/A4.0, 7/A4.0 SIM
5	1/A4.0

NO WORK ON LOWER FLOOR EXCEPT AS REQ'D. TO COMPLETE WORK FOR MIDDLE FLOOR. PATCH AND PAINT TO MATCH ADJ. FINISHES.

### PLAN NOTES:

- 4' X 12' (U.O.N.) WHITEBOARD (SEE ELEVATIONS FOR ORIENTATION)
- 4' X 12' (U.O.N.) TACKBOARD (SEE ELEVATIONS FOR ORIENTATION)
- 4' X 6' (U.O.N.) WHITEBOARD (SEE ELEVATIONS FOR ORIENTATION)
- PULL DOWN SCREEN MOUNTED @ 10'-0" A.F.F. SEE DETAIL 4/A 5.0 FOR SIMILAR ATTACHMENT
- 4' X 4' (U.O.N.) TACKBOARD
- REMOVE CLOSER, PUSHBAR, & LATCHING ASSEMBLY. PROVIDE PLUGS FOR ALL HOLES. PAINT TO MATCH DOOR. CAULK ALL EDGES W/ SILICONE SEALANT BOTH SIDES TO PROVIDE WEATHERTIGHT SEAL. SEE DETAILS 4.5/A 4.1
- REPLACE (E) D.F. W/ NEW H.C. ACCESSIBLE DRINKING FOUNTAINS.
- (E) CABINETS TO REMAIN
- PATCH AND REPAIR TO MATCH ADJ. WALLS, CEILING AND FLOOR FINISHES WHERE WALLS OR CABINETS HAVE BEEN REMOVED. (TYP)
- RELOCATE (E) CABINETS AS SHOWN
- RELOCATE (E) W/D. NEW ACCESSIBLE SINK COUNTER TO FILL OPENING. FINISHES TO MATCH (E)
- RELOCATE (E) STOVE. NEW COUNTER WITH BASE TO FILL OPENING. FINISHES TO MATCH (E)
- COAT HOOKS FROM 2'-0" A.F.F. IN GRID 18' W X 24' H UP TO 6'-0" A.F.F.
- RELOCATED WASHER & DRYER
- PATCH AND REPAIR FLOOR AND BASE. APPLY (N) TILE OF LIKE KIND. RELOCATE (E) VANITIES, SEE 8/A4.1 MIRRORS, SEAT COVER DISPENSERS AND SOAP DISPENSERS PER ADA STANDARDS. SEE SHEET A1.0. (N) TP DISPENSERS IN MEN AND WOMENS, (N) FAUCET HANDLES IN WOMENS, (N) PIPE INSULATION IN WOMENS, (N) GRAB BARS IN MENS AND WOMENS, (N) FLUSH VALVE IN MENS, AND ANY OTHER ITEMS FOR ADA COMPLIANCE TYP.
- RELOCATED FEC

### LEGEND

- NEW FURRED FLOOR FLUSH WITH (E) SEE DET. 1/A4.1
- NEW CABINETS TYP. SEE INTERIOR ELEVATIONS
- (E) CONCRETE WALL TO REMAIN
- (E) WOOD STUD WALL TO REMAIN
- (N) 2X @ 16" O.C. WOOD STUD WALL WITH 5/8" GWB TYPE "X" BOTH SIDES, 1 HOUR ASSEMBLY. (SEE DETAILS FOR STUD SIZE)

# Facility Assessment Process

## Civil Engineer:

Review accessible path of travel conformance

Review Fire / Life Safety issues

Site drainage and wet utilities



PIEDMONT HIGH/MIDDLE SCHOOL  
NON-COMPLIANT ADA PARKING

## Mechanical Engineer:

Review existing equipment and systems for performance, efficiency

## Electrical Engineer:

Review lighting, electrical services, data, and fire alarm systems for functionality, code compliance, identify future needs

# Facility Assessment

## Report

Narrative format  
backbone of final  
report, detailed  
for cost estimates

Sample of  
summary report  
page

## 10'S BUILDING

### CONDITIONS RATINGS

Code Compliance (Accessibility, Structural, Life Safety)

Educational Appropriateness

Technology Infrastructure

Building Finish Materials

Mechanical and Plumbing Systems

Lighting and Electrical Systems

Indoor Environmental Quality

Safety and Security

### CHALLENGES



## EXISTING CONDITIONS SUMMARY

Year Constructed: 1976  
 Modernization Years: 1988  
 Certification Status: YES  
 Number of Classrooms:  
 8 + Administration



Administration Entry

# Facility Assessment Preliminary

## Code Compliance

Code compliant at time of construction. Future improvements may require additional work to meet updated codes

HS & MS Non accessible entries, restrooms, drinking fountains, and work stations

ES accessible throughout

## HS & MS Program Suitability

Undersized classrooms

Inadequate lab spaces

Theater cannot support educational needs

Additional instructional PE needs

# Facility Assessment Preliminary

## Technology Infrastructure

Fully deployed  
wireless systems

Additional  
backbone may  
be required

Storage and  
recharging needs  
as well

## HS & MS Building Finishes

Aged but adequate  
exterior wall finishes,  
worn interior finishes

Single glazed non-  
operable windows

Dry rot at HS trellis

Old roofs

## Elementary Schools Building Finishes

Good condition since  
they are fairly new

## Electrical and Mechanical Systems

Good at  
Elementary  
Schools

Requires  
upgrades at HS  
and MS



# Education Specifications

## Four meetings:

- 1 Introduction
- 2 PHS/MHS/PMS
- 3 Elementary
- 4 Review

Provide enough classrooms to support the educational program as it is today and as it may be.

Support project based learning with flexible functional spaces for creative activities, including wet and dirty classrooms.

Mitigate or compensate for undersized classrooms.

# Common Campus Concerns

Drop off and Parking

Entry and Identity

Accessibility and Way-finding



# Campus Security

Secure campus perimeters

Open during morning drop off and afternoon pickup

Controlled access during school hours

Community access after hours

Two-way communication system all classrooms

Fully addressable fire alarm

Video cameras for entry & after hours security and intrusion alarms



# Basic Classroom Standards

## IMPROVED LEARNING

Studies have shown that increasing Natural Daylight in the Classroom improves student learning 20-26%

Appropriate size

960 SF Standard Classroom

1,350 SF Kindergarten Suite

1,300 SF Science Lab Suite

Acoustically appropriate

Natural but controlled daylighting

Comfortable

Durable, cleanable finishes

Security locks

Second exits as feasible



# Special Education Standards

Home Base provides support for classroom integration

Resource Specialist room and additional conference and meeting rooms required

Calm and orderly classrooms

Quiet room

Access to specialized restroom and changing facilities

Dedicated storage for equipment



# Furniture and Fittings

## Future Planning

Flexible and varied furniture on casters.

Keep an inventory of existing furniture

Support multi-functional spaces



# District Technology Standards

Wireless access full coverage

District AV standard projector & screens

Support 1:1 Chromebook program including backbone, charging and storage needs



# Expanded Program Spaces

Elementary- Full day kindergarten

Expanded offerings for computer, web design or graphics supported with additional computer labs.

Additional media studies / presentation spaces such as broadcast studios

Maker Labs

Presentation spaces for small student groups

Cooking Center - kitchen area and table area to support all instruction (garden programs, student studies, special education)





# Library Media Center

Strong technology backbone to support Chromebook program, including recharging stations.

Flexible and adaptable to a wide variety of work and study spaces with both furniture and shelving on casters for individuals, small groups, large groups, and full classes.

Before, during and after school activities

Textbook storage

Dedicated storage for unique user groups



# PHS Performing Arts

Theater serves the community as well as school.

As a learning space provide full accommodation for student involvement in all aspects of presentation – staging, technical production, set design as well as performances.

Should seat one half the student population (PHS + MHS) for assemblies.

A second small space for presentations would increase scheduling flexibility and reduce wear and tear.



# Other Spaces

## Administration

Oversight of main entry

Large enough with secondary support offices for staff

Staff room, restrooms (with showers)

Work room

## Small Group Spaces

Identified as an unmet need

Individual quiet space, small groups, peer-to-peer or teaching

Conferences

Storage !

## Restrooms

Provide restrooms to meet campus need

At least one accessible restroom each for students and staff

One staff and one student gender-neutral restroom each site

Consider providing staff showers as well to support healthy lifestyles.

# Outdoor Learning Environments

Variety of spaces  
for learning

Visual relief from  
built environment

Educational content

Connection to  
environment



American Canyon HS, QKA



Neil Cummins School, QKA



# School Grounds

Create community,  
display space and  
opportunities for  
student work/  
gathering

Create a variety  
of student  
gathering spaces,  
shaded and with  
water available

Gardens



# Master Plan Process

## The Master Plan:

Creates a road map for future development which supports the educational program

Prioritizes proposed improvements

Provides information for estimates



# Master Plan Process

## Meet

Briefly review  
facility assessment  
findings

Look at the site  
plan

Leading themes  
are edges, entry,  
circulation,  
buildings

## Discuss

What works?

What doesn't?

What is needed?

Where can this  
happen?

What do we need  
to know?

## Create



# Master Plan Goals

## Conceptual Plans

Develop conceptual site plans showing proposed improvements and appropriate alternates

Create the opportunity for unique identities at each school

## PUSD Board

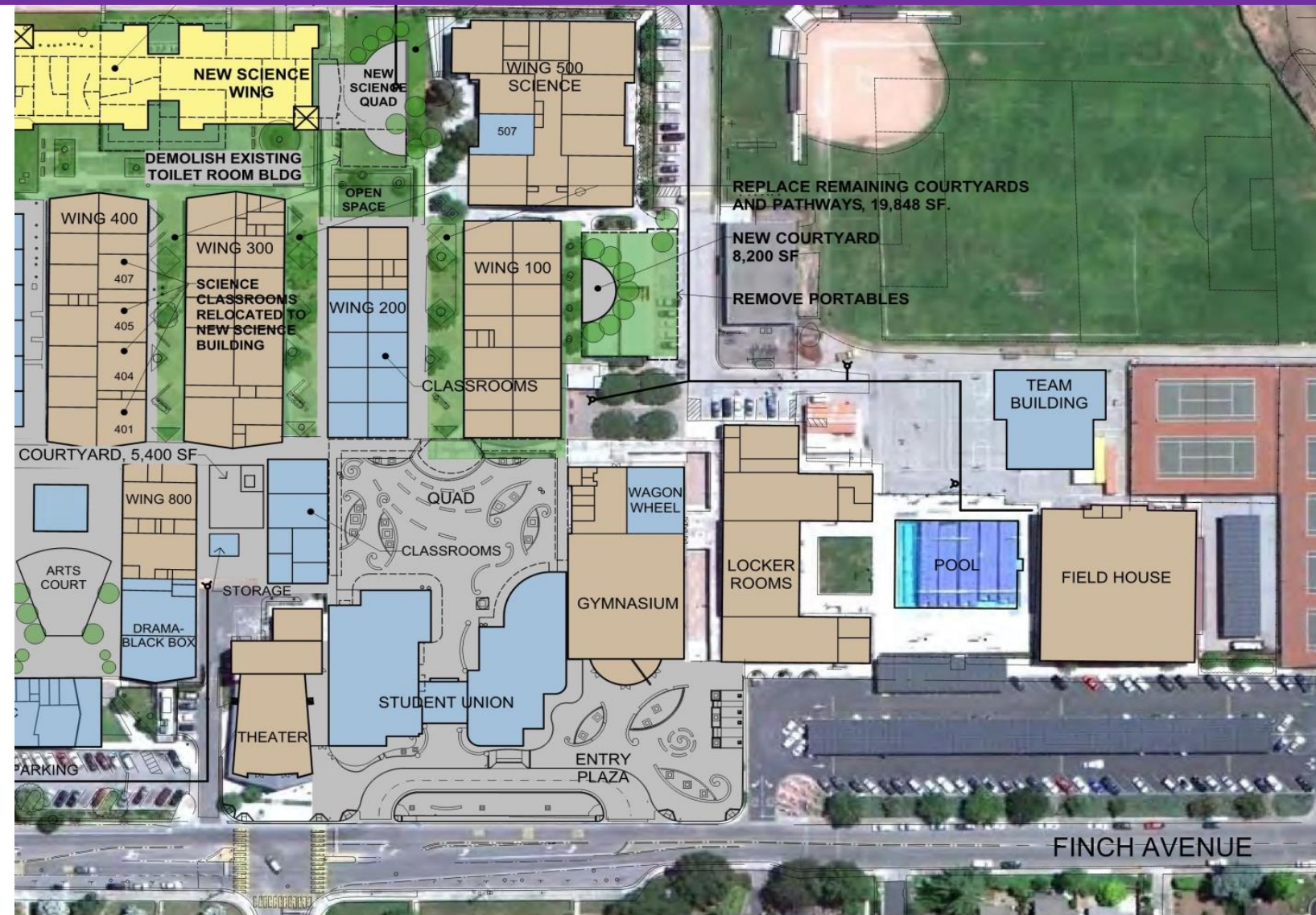
Reviews preliminary plans

Seeks community input

Identifies priorities

Defines budget parameters

Adopts approved Master Plan



PHASE FIVE - SHOWN AS FALL 2017, BUT TIMING IS FLEXIBLE NEW 600 BUILDING

ENROLLMENT PROJECTIONS INCREASE  
NEED FOR CLASSROOMS COULD BE  
SOUTH OF WING 100.

- 6 CLASSROOMS @ DEMOLISHED BUILDING 600
- +26 CLASSROOMS @ NEW BUILDING 600; INCLUDES 5 PERM. SCIENCE CRs
- CONVERT TEMP SCIENCE CLASSROOMS BACK TO GENERAL CLASSROOMS
- 1 RETURN LIBRARY CLASSROOM TO LIBRARY GENERAL USE
- 6 REMOVE ALL SITE PORTABLES; (AFTER BUILDING 600 IS IN USE)
- +13 PHASE FIVE TOTAL CLASSROOMS

## LEGEND

- EXISTING
- CURRENT
- PREVIOUS



# Master Planning Meetings

## SITE SPECIFIC MEETINGS

Piedmont High School:	October 26 <sup>th</sup>	3:45pm-5:15pm
Piedmont Middle School:	November 2 <sup>nd</sup>	3:30pm-5:00pm
Millennium High School:	November 5 <sup>th</sup>	3:30pm-5:00pm
Havens Elementary School:	November 12 <sup>th</sup>	3:30pm-5:00pm
Wildwood Elementary School:	November 19 <sup>th</sup>	3:30pm-5:00pm
Beach Elementary School:	November 30 <sup>th</sup>	3:30pm-5:00pm
Piedmont High/Millennium High	December 1 <sup>st</sup>	3:30pm-5:00pm

## OTHER SCHEDULED MEETINGS

Board Work Shop	December 12	9:00am–11:00 am
Community Outreach	January 12, 2016	7:00pm -8pm
Community Outreach	January 19, 2016	7:00pm -8pm
FINAL BOARD APPROVAL	FEBRUARY 8, 2016	



## Questions and Comments



QUATTROCCHI KWOK  
ARCHITECTS