



LONG-RANGE FACILITY PLANNING COMMITTEE

Meeting #1 Wednesday, October 19, 2022

MEETING AGENDA

- Introductions & Icebreaker
- Committee Overview & Charge
- Introduction of Chairperson
- Planning Process & Schedule
- Assessment & Facility Conditions
- Facility Tour & Discussion
- Rockdale ISD Highlights
- Decision Making & Defining Consensus
- Questions & Meeting Wrap up



INTRODUCTIONS & ICEBREAKER

INTRODUCTIONS



Name



Years as a Rockdale ISD resident



Profession / role(s) in the district




Children / grandchildren in the district

ONE word that describes Rockdale ISD to you



COMMITTEE OVERVIEW & CHARGE

COMMITTEE CHARGE

- The Committee shall evaluate current and future facilities needs and develop a comprehensive plan to address district facility conditions to support quality educational programs and student opportunities.
 - The Committee will provide facility recommendations to the Rockdale ISD Board of Trustees after thorough assessment and analysis of relevant data.
- 

COMMITTEE MEMBERS

The LRPC allows stakeholders to have a voice in the decision-making process.

- Citizens committed to the students of Rockdale ISD
- Represent a diverse cross-section of our district
- Bring varying perspectives from our communities

COMMITTEE PURPOSE

1

Evaluate current and future facilities needs.

2

Assess and analyze relevant data to prioritize needs of the district.

3

Develop a comprehensive plan to address district growth and facility conditions.

4

Provide facility recommendations to the Board of Trustees.

- District staff members and district consultants will aid the committee and serve as information providers.
- The Committee will be led by a committee member serving as chairperson.

COMMITTEE CHAIRPERSON

- Help lead each committee meeting.
- Facilitate small and large group discussions on all information provided.
- Ensure all ideas and/or positions of committee members are heard and given equal time.
- Maintain group focus and guide the Committee to its goals.
- Serve as a point of contact for committee members.
- Provide formal presentation to Board of Trustees with the Committee's final recommendations.

MEETING DISCUSSION TOPICS



- Existing Facility Conditions
- Facility Tours
- District Enrollment Data
- School Capacity Analysis

- Public School Finance
- District Financial Overview

SCHEDULE

Meeting #1

Wednesday,
October 19

6:00 PM

*Rockdale
Intermediate*

Meeting #2

Wednesday,
November 2

6:00 PM

*Rockdale
Elementary*

Meeting #3

Wednesday,
November 16

6:00 PM

*Rockdale
Junior High*

Meeting #4

Wednesday,
December 7

6:00 PM

*Rockdale
High School*

Recommendation to the Board: January 18, 2023 - School Board Meeting



ASSESSMENT & FACILITY CONDITIONS

Assessment

1 — PROCESS

2 — ELEMENTARY SCHOOL

3 — INTERMEIDATE SCHOOL

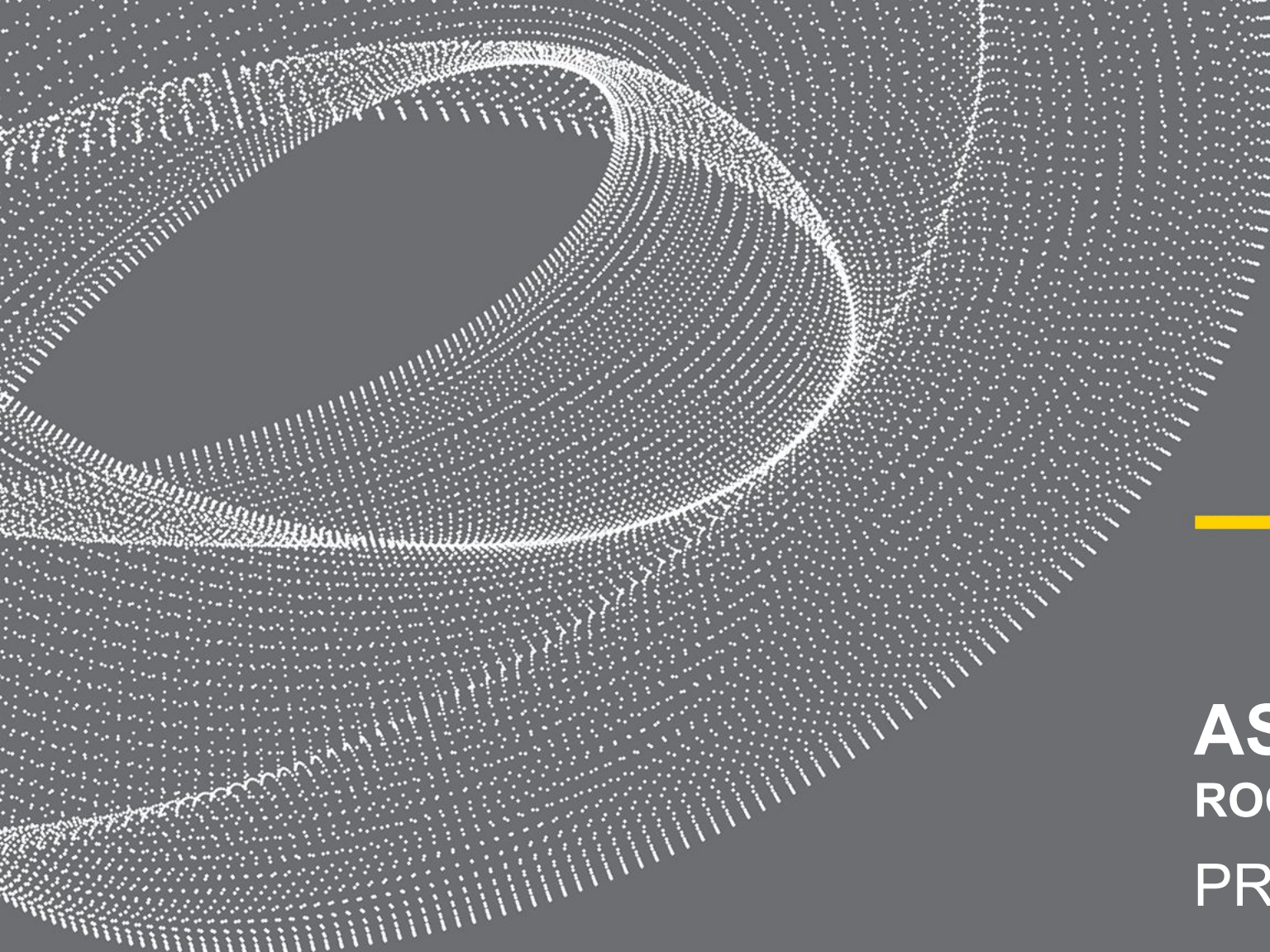
4 — JUNIOR HIGH SCHOOL

5 — HIGH SCHOOL

6 — HOSPITAL

A large, light-colored stone sign with the word "ROCKDALE" in raised, white, sans-serif capital letters. The sign is set against a background of green trees and a grassy field. To the right of the sign is a stone pillar with a decorative archway. The entire scene is overlaid with a semi-transparent white filter.

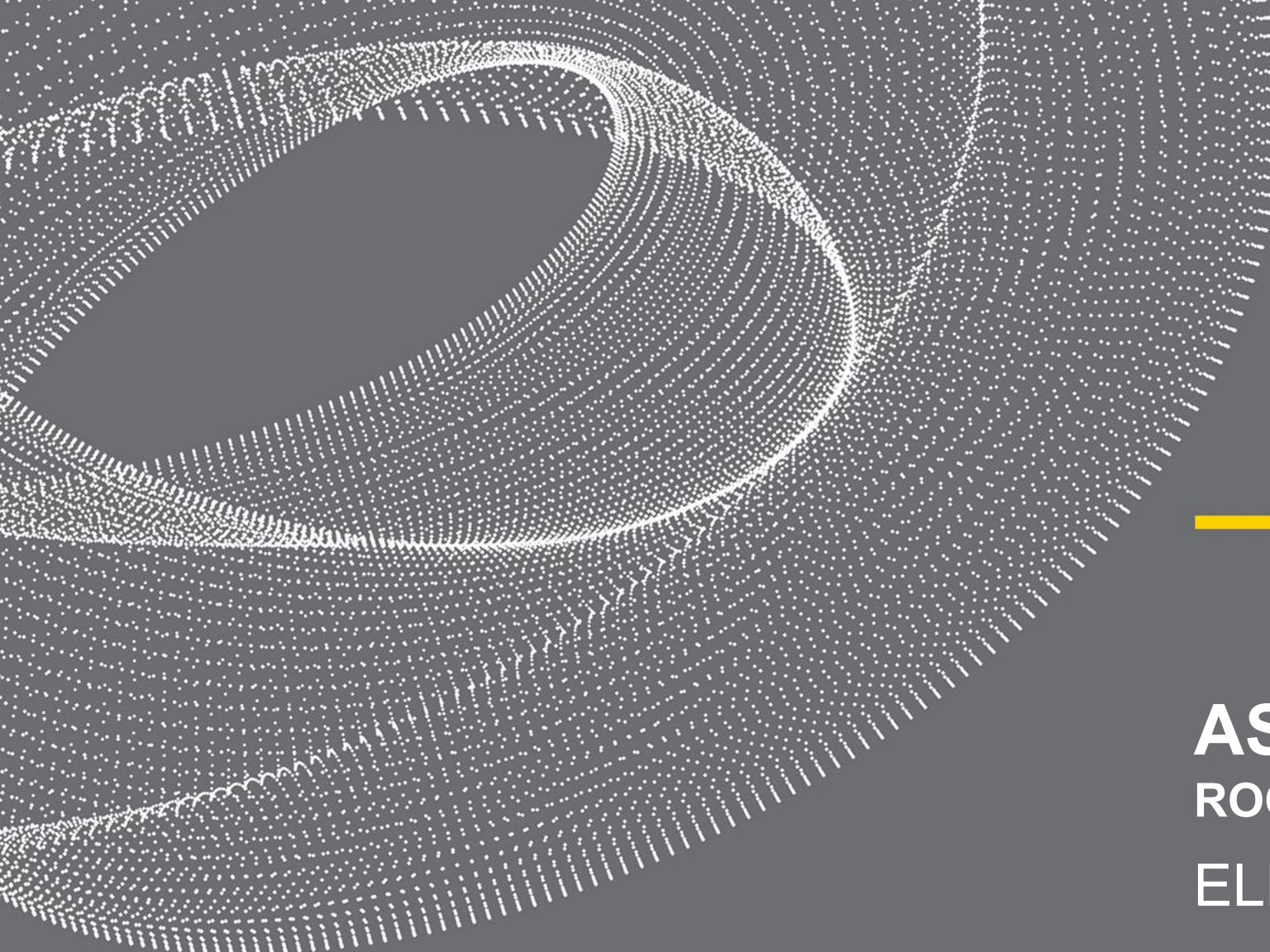
ROCKDALE



ASSESSMENT UPDATE
ROCKDALE ISD
PROCESS

FACILITY ASSESSMENT PROCESS

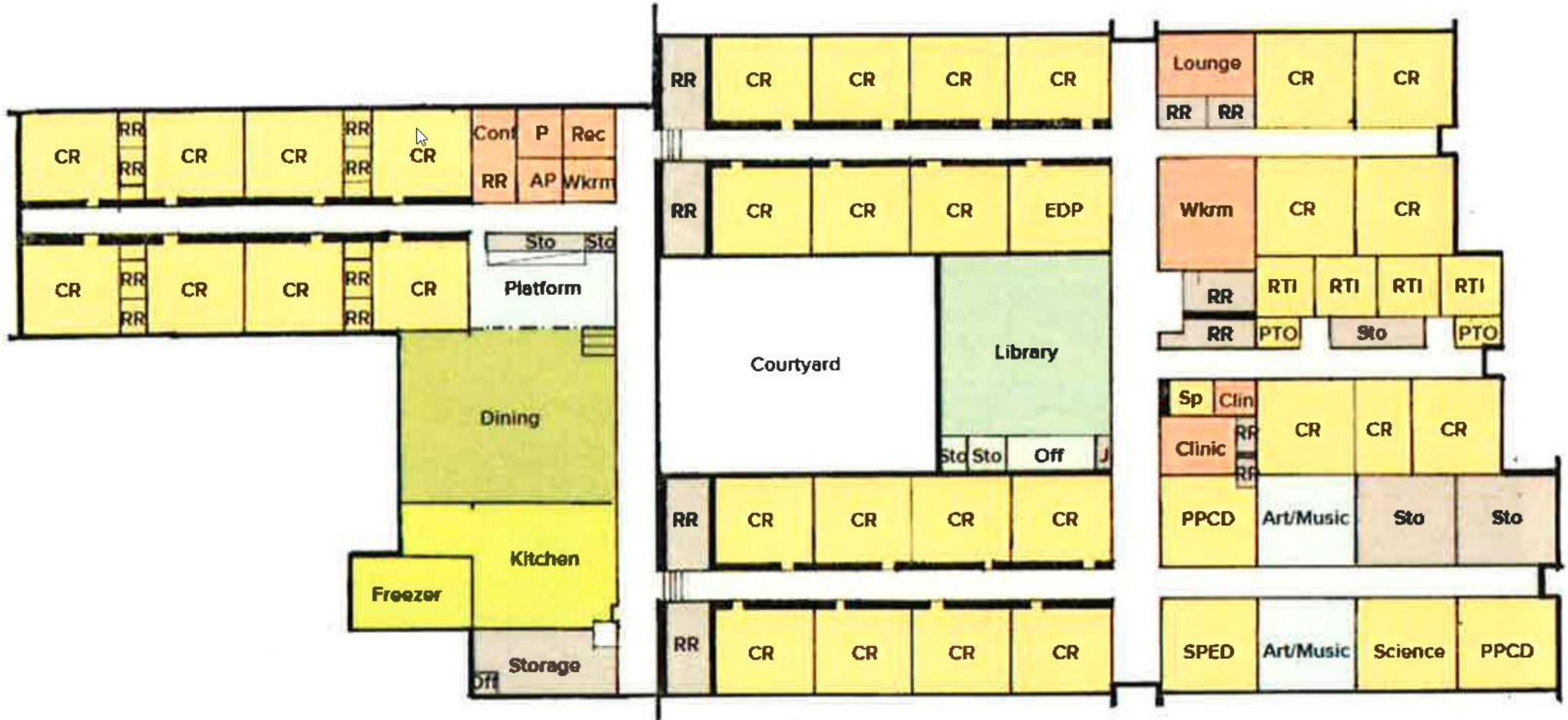
- 2015 Assessment
 - 95% Applicable, Initial Documentation, Building and Site
- 2022 Assessment Update
 - All Campuses (plus Hospital), Site Visits, District/Principal/Maintenance Input
- Campus Options
 - Student Capacity Growth, Building Conditions, Code Requirements



ASSESSMENT UPDATE
ROCKDALE ISD
ELEMENTARY SCHOOL

Elementary School – Existing Site Plan





	<u>NUMBER</u>	<u>CAPACITY</u> <u>(22 x .85)</u>	<u>TOTAL</u> <u>CAPACITY</u>	<u>NOTES</u>
Building Use				
West Wing Classrooms	8			
Middle Wings Classrooms	16			
East Wing Classrooms	14			
Half-size Classrooms				x1 - does not generate capacity
Total Classrooms	38	18.7	710.6	if all classrooms were used to generate capacity
Current Use				
Pre-K Classrooms	4	18.7	74.8	generates capacity
Kinder Classrooms	6	18.7	112.2	generates capacity
1st Grade Classrooms	6	18.7	112.2	generates capacity
SPED	2			
Motor Lab	1			
Art/Music	1			
Science Lab	1			
Computer Lab	1			
ESL	1			
Clinic	1			
Storage	1			
Conference	1			
EDP	1			verify use
PLC	1			verify use
Day Care	4			verify day care student capacity requirements
Total Classrooms Used	32		299.2	
Total Unused Classrooms	6	18.7	112.2	
			411.4	CURRENT CAPACITY OF SCHOOL

CAMPUS INFORMATION

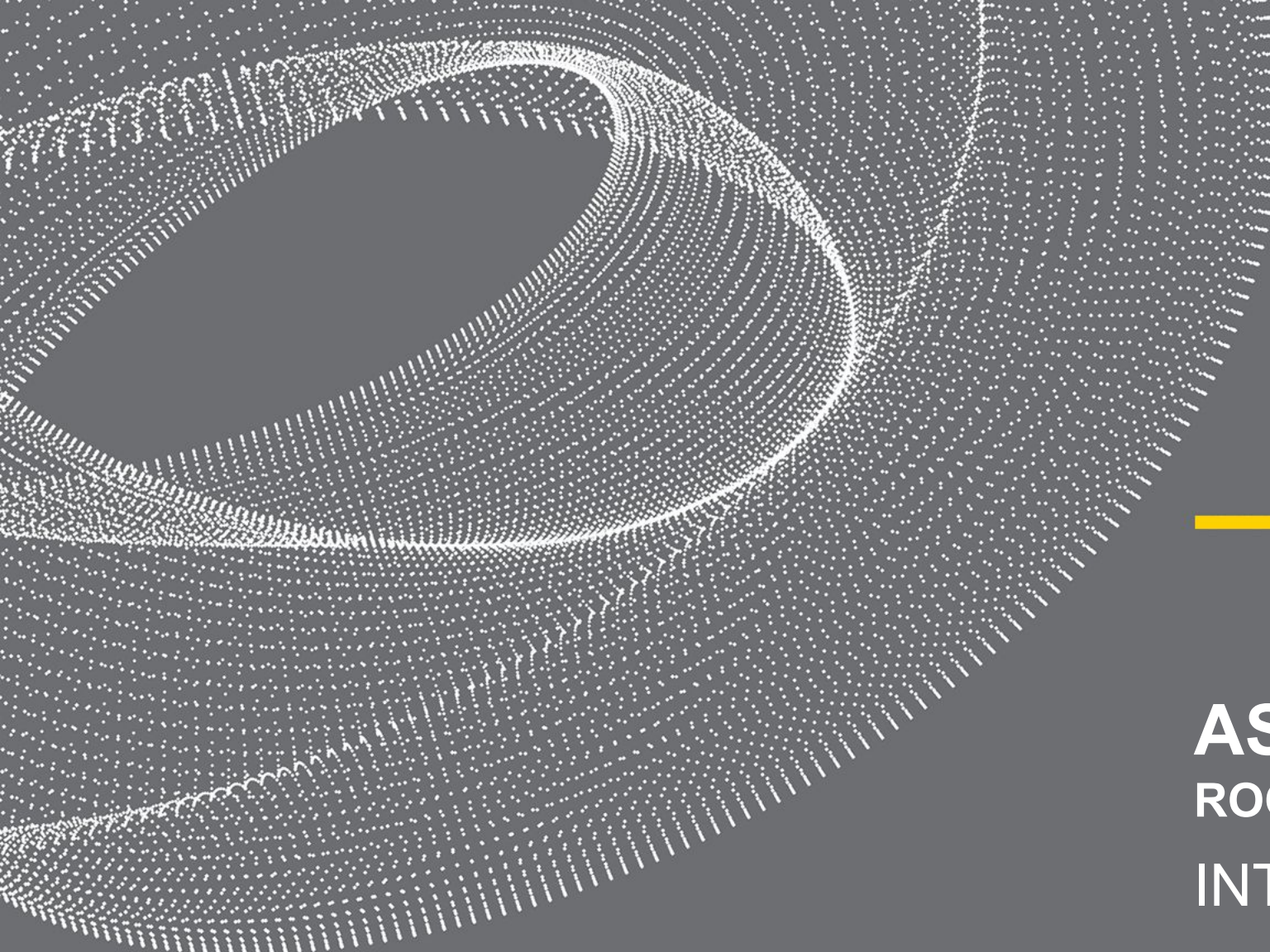
- YEAR BUILT – 1953
 - (ADDITION BUILT IN 1980)
- GYMNASIUM BUILT – 1935

- ELEVEN (11) HIGH PRIORITY ITEMS
- FIFTEEN (15) MEDIUM PRIORITY ITEMS
- TWO (2) LOW PRIORITY ITEMS

- MAJOR RENOVATION/UPDATE COST: 50-75% OF NEW SCHOOL

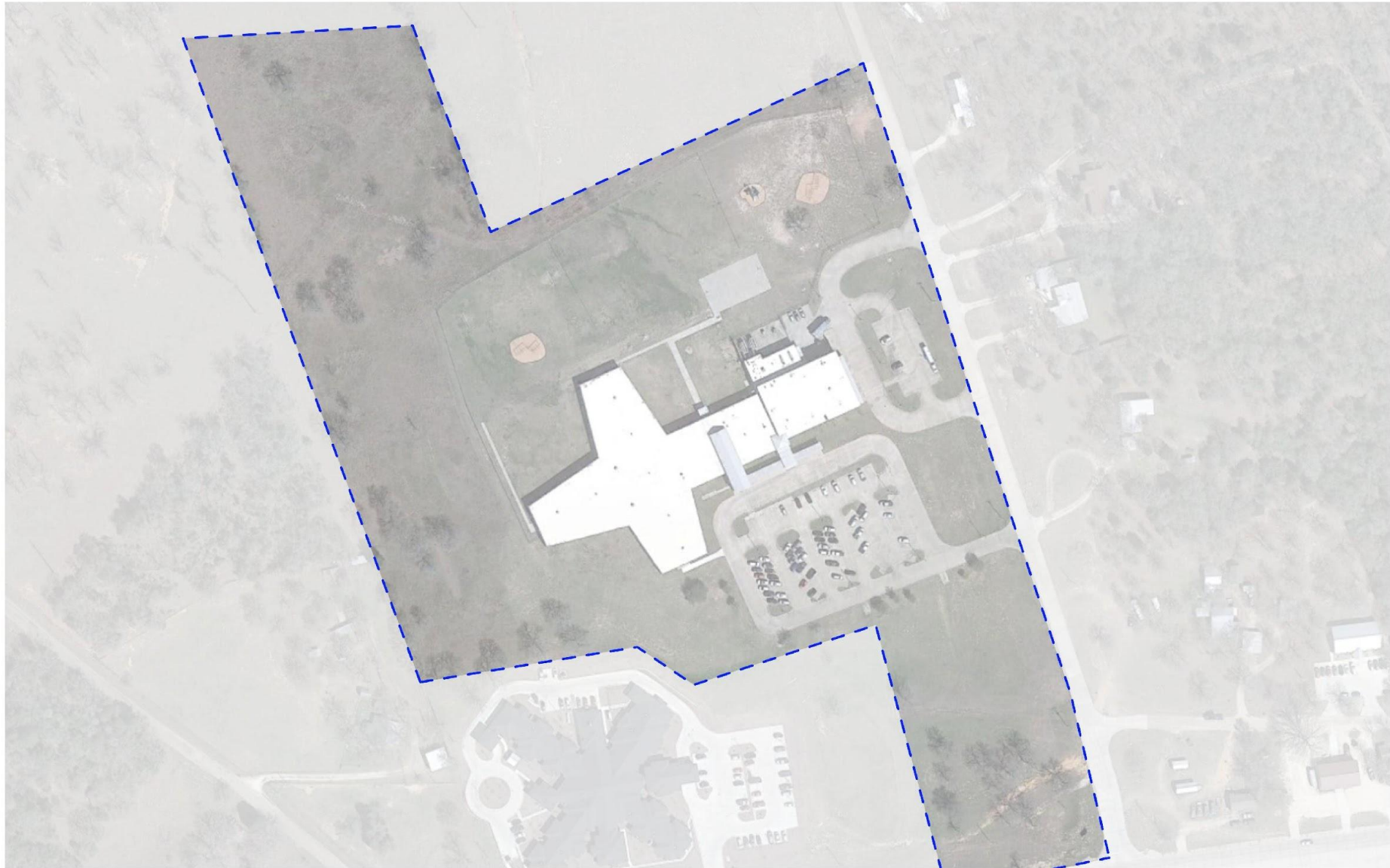
PRIORITY LIST

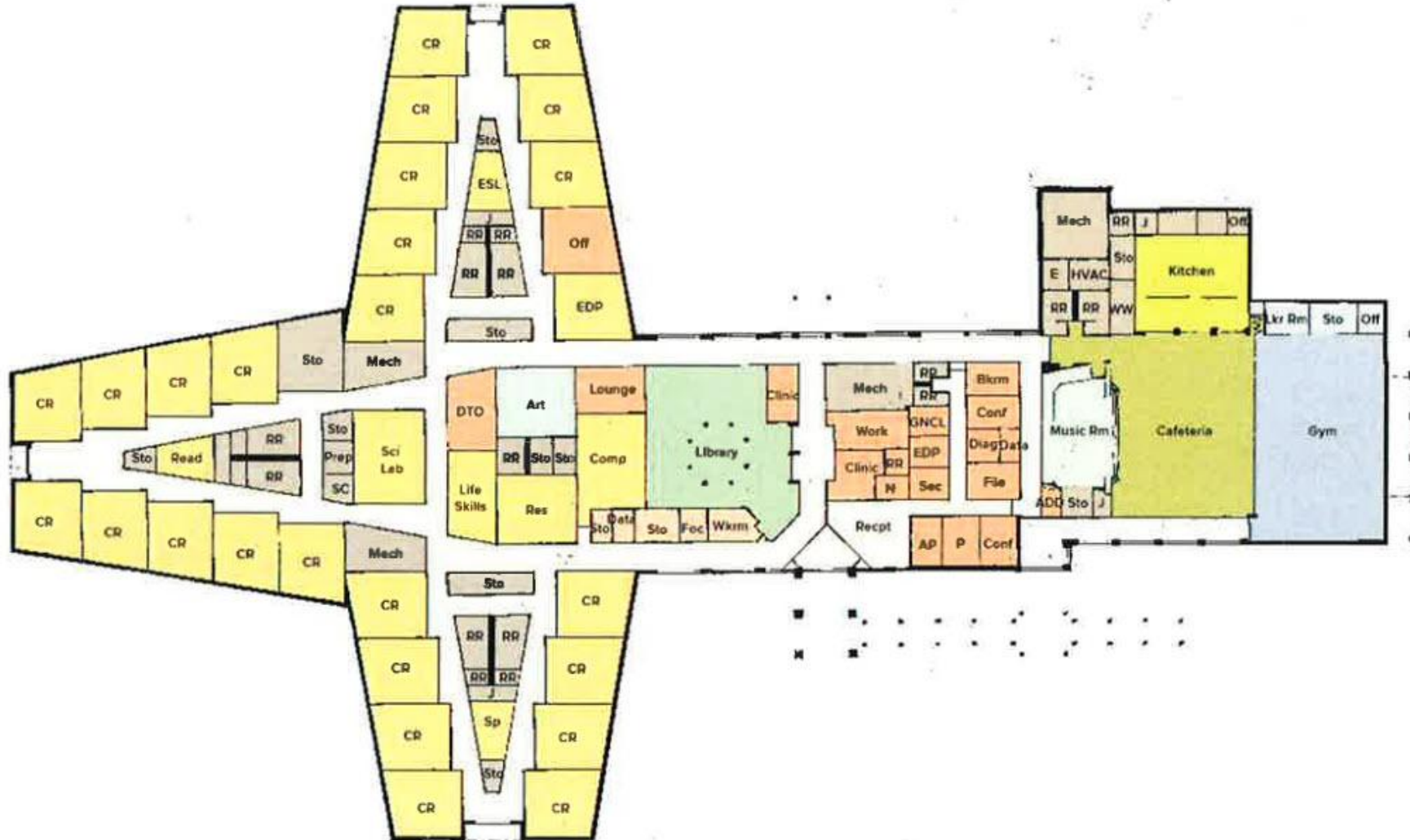
- HIGH PRIORITIES
 - Life Safety/Fire Safety Code requirements
 - Exterior Accessibility Code requirements
 - Interior Accessibility Code requirements
 - Asbestos removal
 - Secure Entry Vestibule (A/V link, remote)
 - Modify parking/pick-up area
 - HVAC replacement (25 units)/ductwork
 - Low-slope Roof replacement
 - Sloped non-metal Roof replacement
 - Window replacement
 - Exterior Classroom Door removal
- MEDIUM PRIORITIES



ASSESSMENT UPDATE
ROCKDALE ISD
INTERMEDIATE SCHOOL

Intermediate School – Existing Site Plan



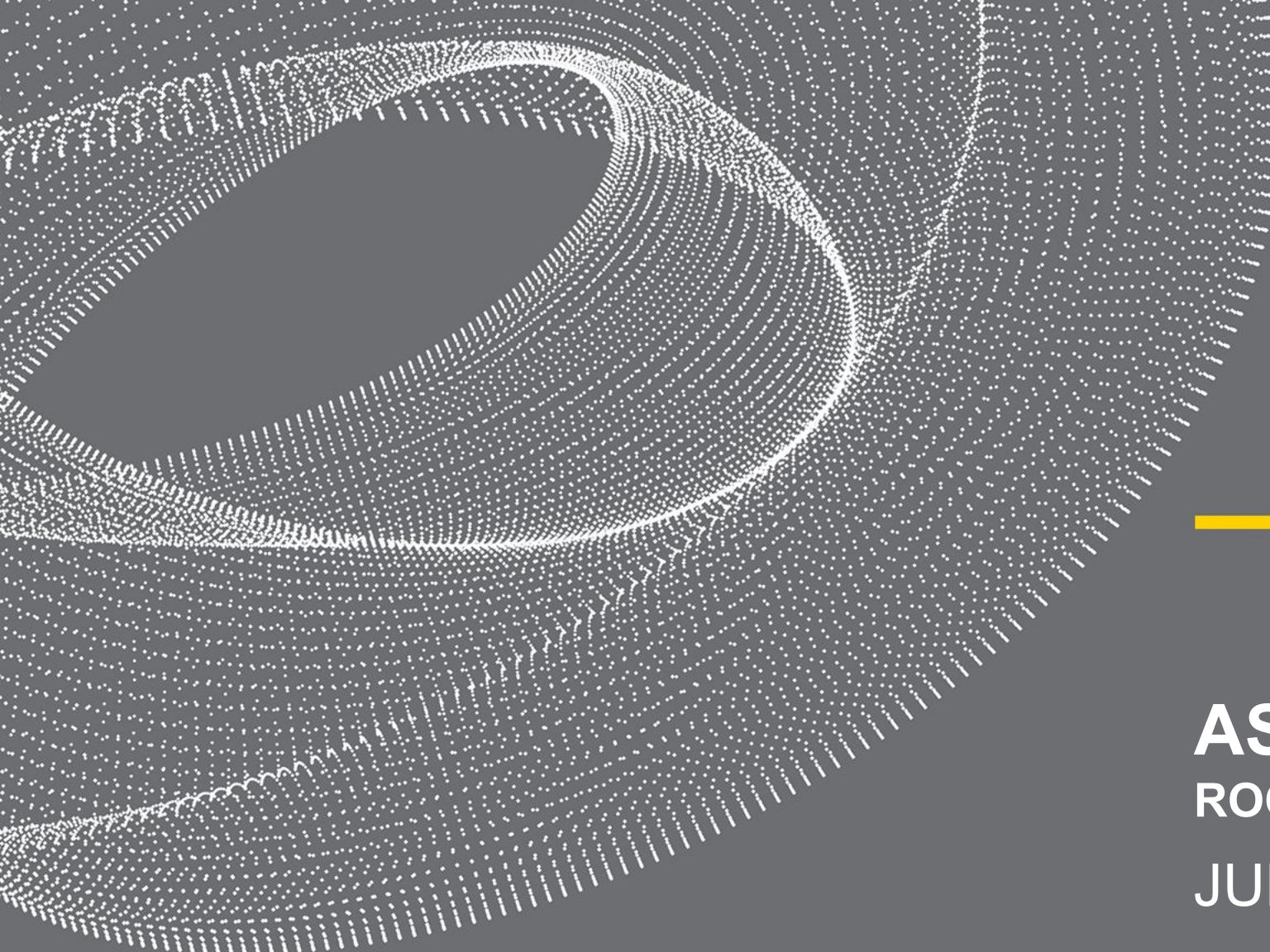


	NUMBER	CAPACITY (25 x .85)	TOTAL CAPACITY	NOTES
Building Use				
North Wing Classrooms	10			
West Wing Classrooms	10			
South Wing Classrooms	8			
Middle Area Classrooms	6			some classrooms are designed for non-capacity use
Half-Size Classrooms				x3 - do not generate capacity
Total Classrooms	34	21.25	722.5	if all classrooms were used to generate capacity
Current Use				
2nd Grade Classrooms	6	21.25	127.5	generates capacity
3rd Grade Classrooms	5	21.25	106.25	generates capacity
4th Grade Classrooms	4	21.25	85	generates capacity
5th Grade Classrooms	5	21.25	106.25	generates capacity
SPED	2			
Motor Lab	1			
Art	1			
Science Lab	1			
Computer Lab	1			
DTO	1			
Storage	1			
Reading/Math	2			
Total Classrooms Used	30		425	
Total Unused Classrooms	4	21.25	85	
			510	CURRENT CAPACITY OF BUILDING



CAMPUS INFORMATION

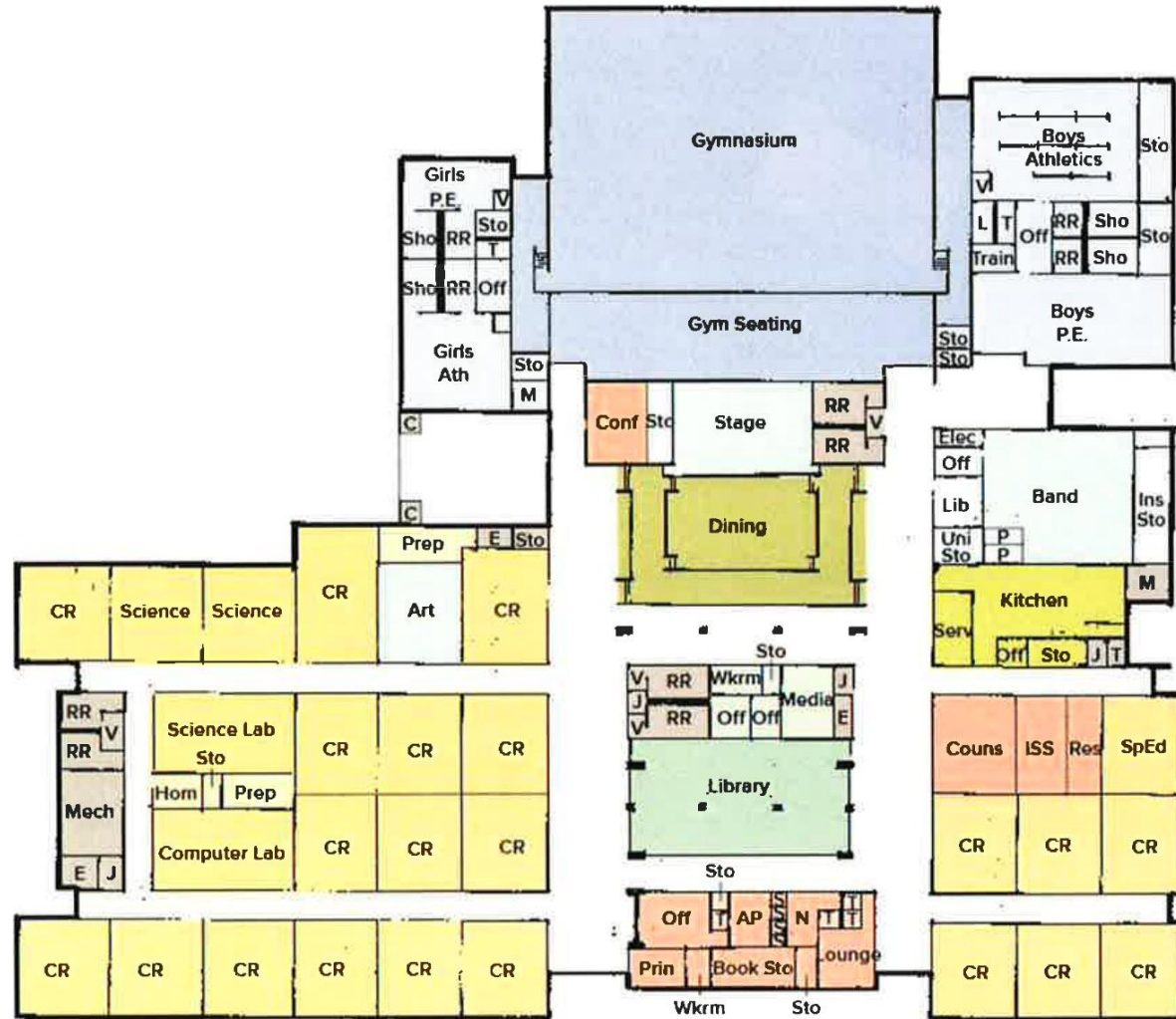
- YEAR BUILT – 2011
- ONE (1) HIGH PRIORITY ITEM
- SIX (6) MEDIUM PRIORITY ITEMS
- FIVE (5) LOW PRIORITY ITEMS
- MINOR RENOVATION/UPDATE COST: <5% OF NEW SCHOOL



ASSESSMENT UPDATE
ROCKDALE ISD
JUNIOR HIGH SCHOOL

Junior High School – Existing Junior High School





	<u>NUMBER</u>	<u>CAPACITY</u> <u>(25 x .85)</u>	<u>TOTAL</u> <u>CAPACITY</u>	<u>NOTES</u>
Building Use				
West Wing Classrooms	20			
East Wing Classrooms	10			
Specialty Classrooms				x2 - Art and Band, not capacity generating
Total Classrooms	30	21.25	637.5	if all classrooms were used to generate capacity
Current Use				
Math Classrooms	3	21.25	63.75	generates capacity
English Classrooms	3	21.25	63.75	generates capacity
Social Studies Classrooms	3	21.25	63.75	generates capacity
Science Classrooms	4	21.25	85	generates capacity
Science Lab	1			
Computer Lab	2	21.25	42.5	verify if capacity generating
Intervention	2			verify use
Spanish	1	21.25	21.25	verify if capacity generating
AVID	1	21.25	21.25	verify if capacity generating
Theater	1	21.25	21.25	verify if capacity generating
Health	1	21.25	21.25	verify if capacity generating
ESL	1	21.25	21.25	verify if capacity generating
SPED	1			
Specialty	1			verify use
ISS	1			
AP/Counselor Office	2			
Conference	1			
Storage	1			
Art				very large room
Band				large room (not large enough)
Total Classrooms Used	30		425	
Total Unused Classrooms	0	21.25	0	
			425	CURRENT CAPACITY OF BUILDING

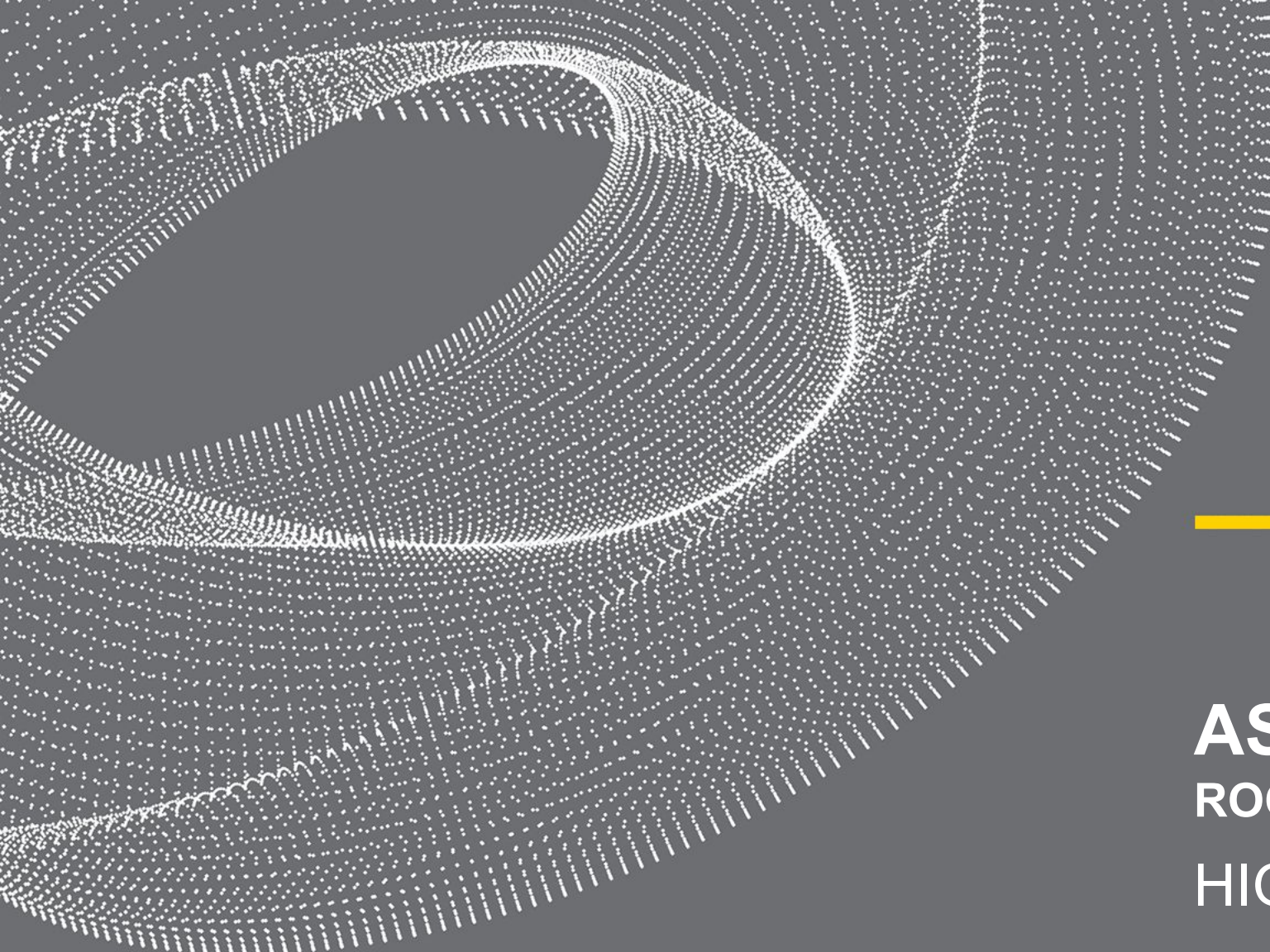
CAMPUS INFORMATION

- YEAR BUILT – 1980
 - (ADDITION BUILT IN 2008)
- EIGHT (8) HIGH PRIORITY ITEMS
- TWENTY-FIVE (25) MEDIUM PRIORITY ITEMS
- FOUR (4) LOW PRIORITY ITEMS
- MAJOR RENOVATION/UPDATE COST: 25-50% OF NEW SCHOOL

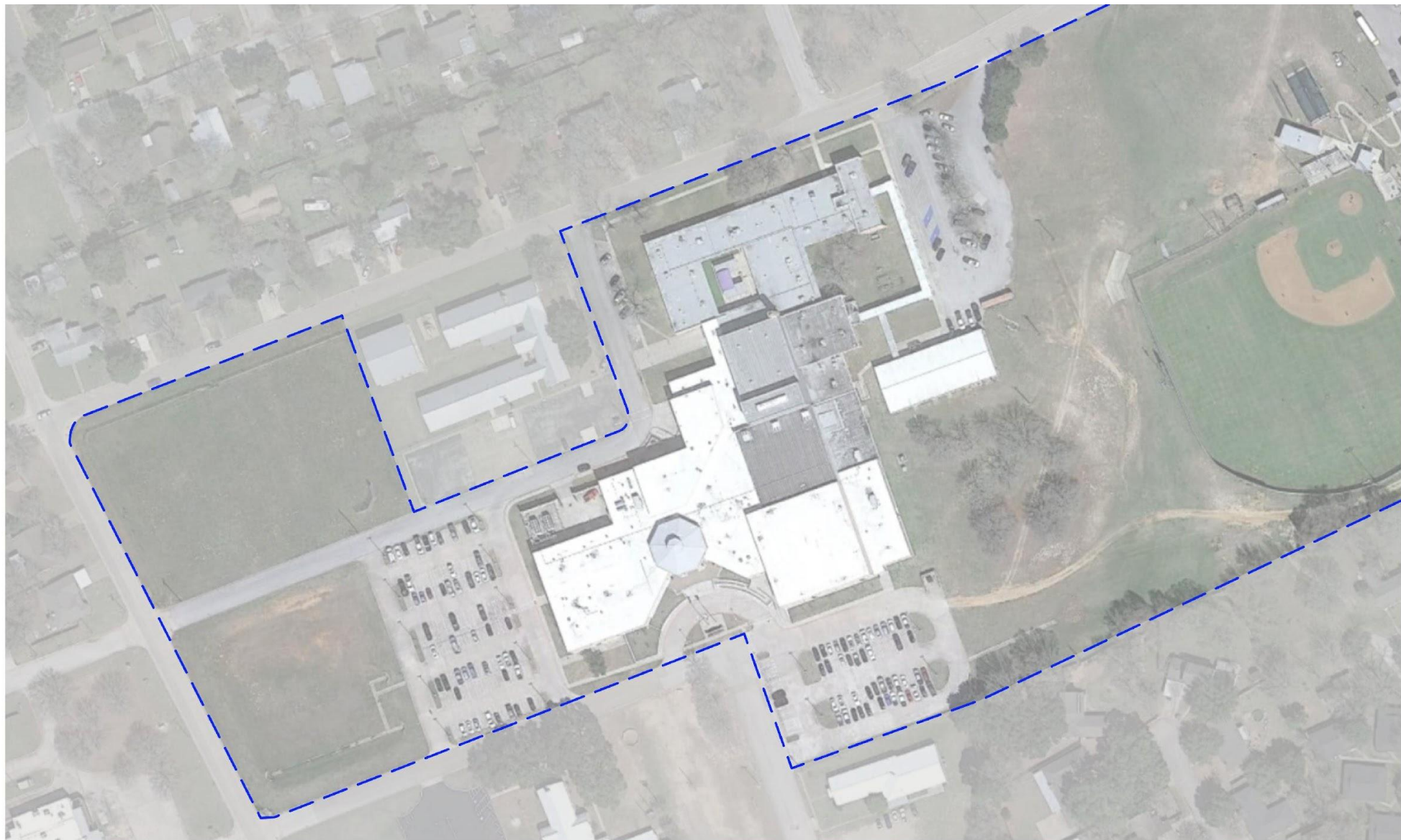
PRIORITY LIST

- HIGH PRIORITIES
 - Life Safety/Fire Safety Code requirements
 - Exterior Accessibility Code requirements
 - Interior Accessibility Code requirements
 - Asbestos removal
 - Secure Entry Vestibule (A/V link, remote)
 - Provide Fire Lane access/stripping
 - Modify pick-up/drop-off and bus drive
 - HVAC replacement (7 units)
 - Low-slope Roof replacement

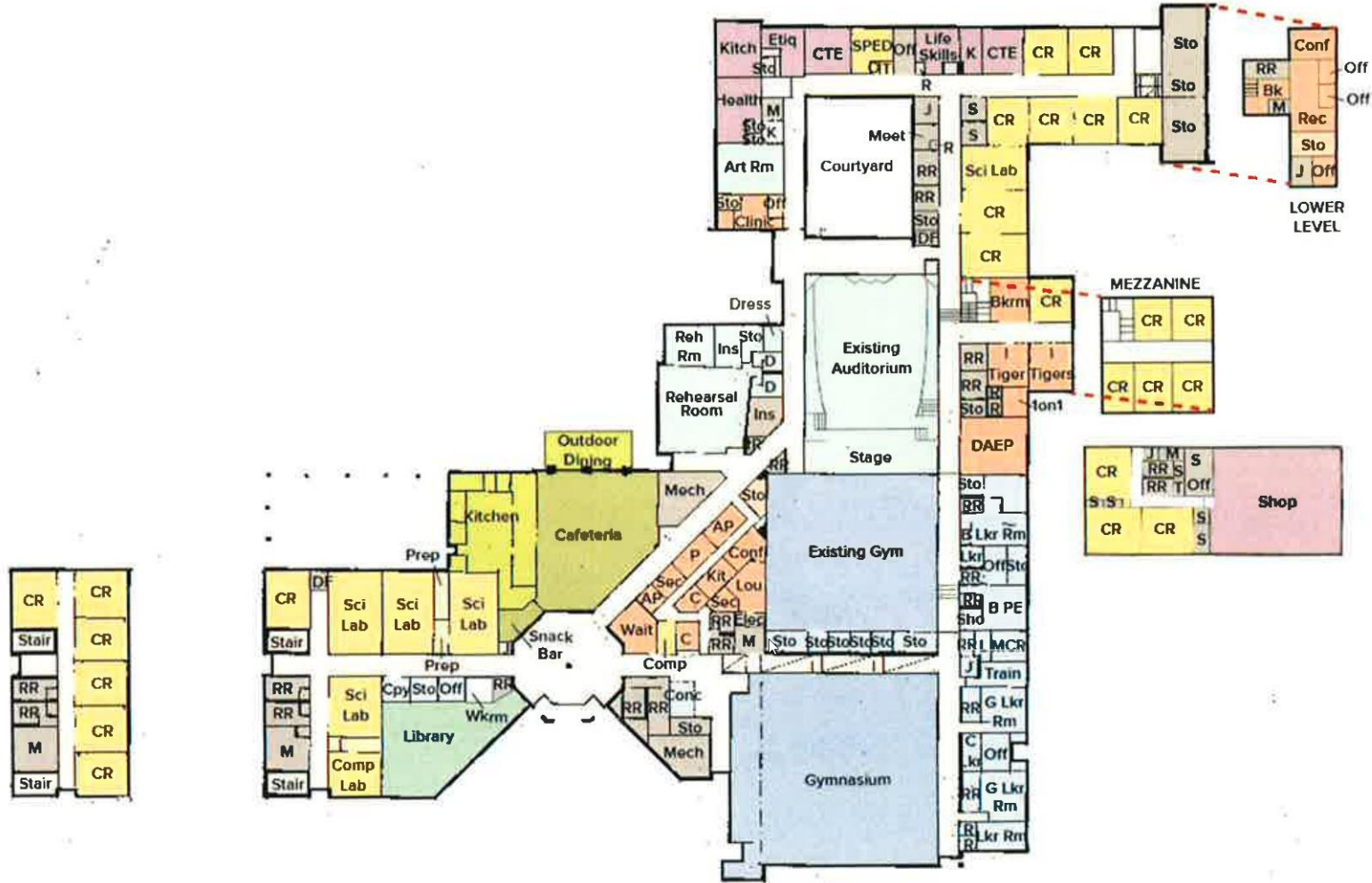
- MEDIUM PRIORITIES
 - Classroom Additions



ASSESSMENT UPDATE
ROCKDALE ISD
HIGH SCHOOL



High School – Existing Floor Plan



	NUMBER	CAPACITY (25 x .85)	TOTAL CAPACITY	NOTES
Building Use				
North Wing Classrooms (older)	11			
North Wing Classrooms (older - NA)	2			not accessible, used for storage
East Wing Classrooms (older)	13			
Southwest Wing Classrooms (addition)	12			
Ag Building	3			
Specialty Classrooms				x4 - do not generate capacity
Half-size Classrooms				x4 - do not generate capacity
Total Classrooms	41	21.25	871.25	if all classrooms were used to generate capacity
Current Use				
Math Classrooms	4	21.25	85	generates capacity
English Classrooms	5	21.25	106.25	generates capacity
Social Studies Classrooms	4	21.25	85	generates capacity
Science Classroom	2	21.25	42.5	generates capacity
Science Lab Classrooms	4	21.25	85	generates capacity
CTE: Computer Lab	3	21.25	63.75	CTE generates capacity
CTE: Ag	4	21.25	85	CTE generates capacity
CTE: Health Sciences	2	21.25	42.5	CTE generates capacity
CTE: Education	1	21.25	21.25	CTE generates capacity
Fresh Focus	1	21.25	21.25	Freshman class, generates capacity
PE/Health	1	21.25	21.25	generates capacity
Spanish	2	21.25	42.5	generates capacity
DAEP	1			
ISS	1			
SPED	3			
Book Room	1			verify this is for book storage
Storage	2			these rooms are not accessible
Band				with attached support spaces
Theater				not near stage
Art				large room
Ag Shop				in Ag Building
Total Classrooms Used	41		701.25	
Total Unused Classrooms	0	21.25	0	
			701.25	CURRENT CAPACITY OF BUILDING



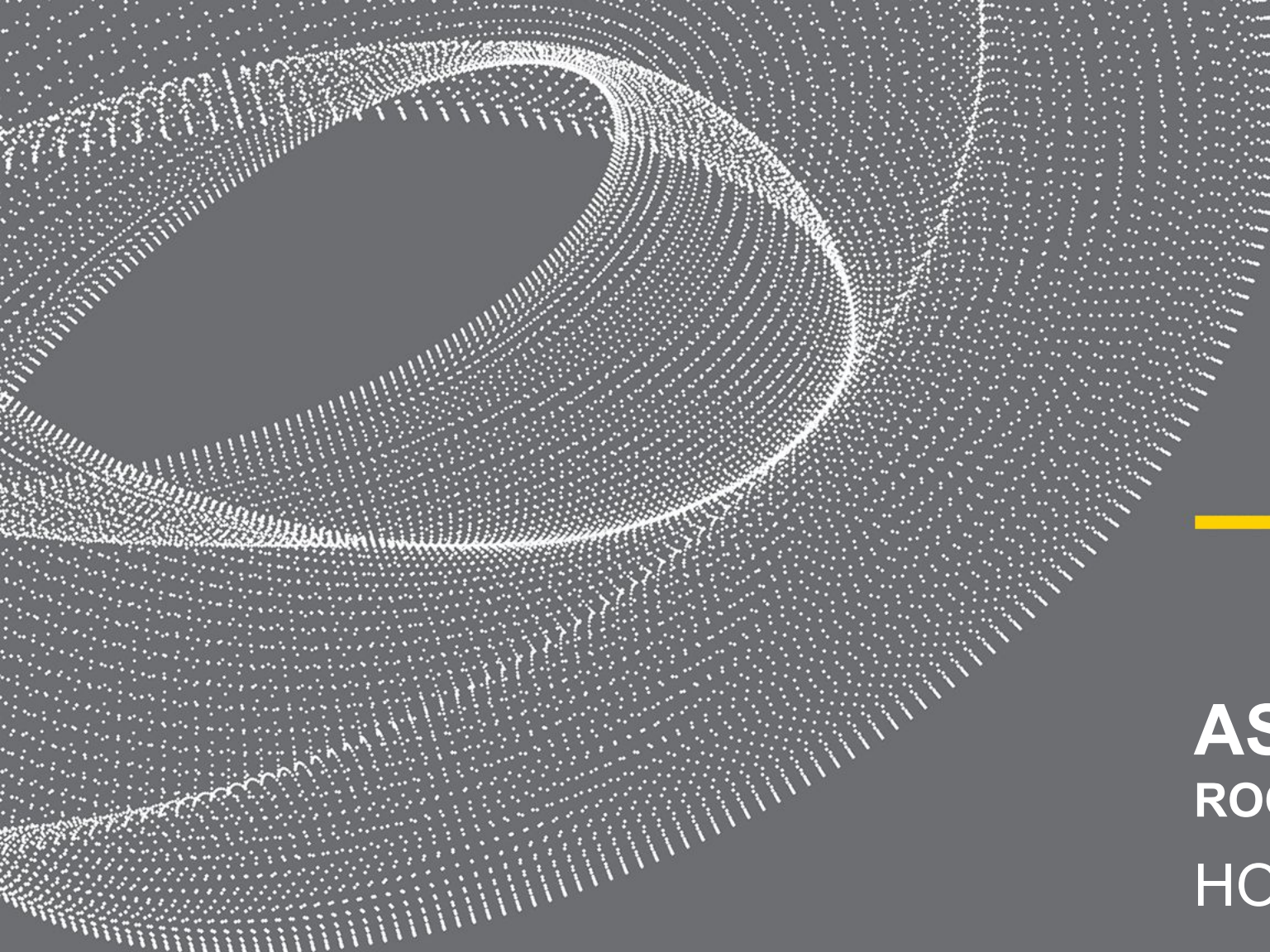
CAMPUS INFORMATION

- YEAR BUILT – 1955
 - (ADDITION BUILT IN 2009)
- EIGHT (8) HIGH PRIORITY ITEMS
- THIRTEEN (13) MEDIUM PRIORITY ITEMS
- TWENTY (20) LOW PRIORITY ITEMS
- MAJOR RENOVATION/UPDATE COST: <5% OF NEW SCHOOL

PRIORITY LIST

- HIGH PRIORITIES
 - Exterior Accessibility Code requirements
 - Interior Accessibility Code requirements
 - Security Gate dead-end removal
 - Asbestos removal
 - Secure Entry Vestibule (A/V link, remote)
 - CTE/Shop Secure Access Path
 - HVAC replacement (1 units)
 - Low-slope Roof replacement

- MEDIUM PRIORITIES
 - MEPT Upgrade Package

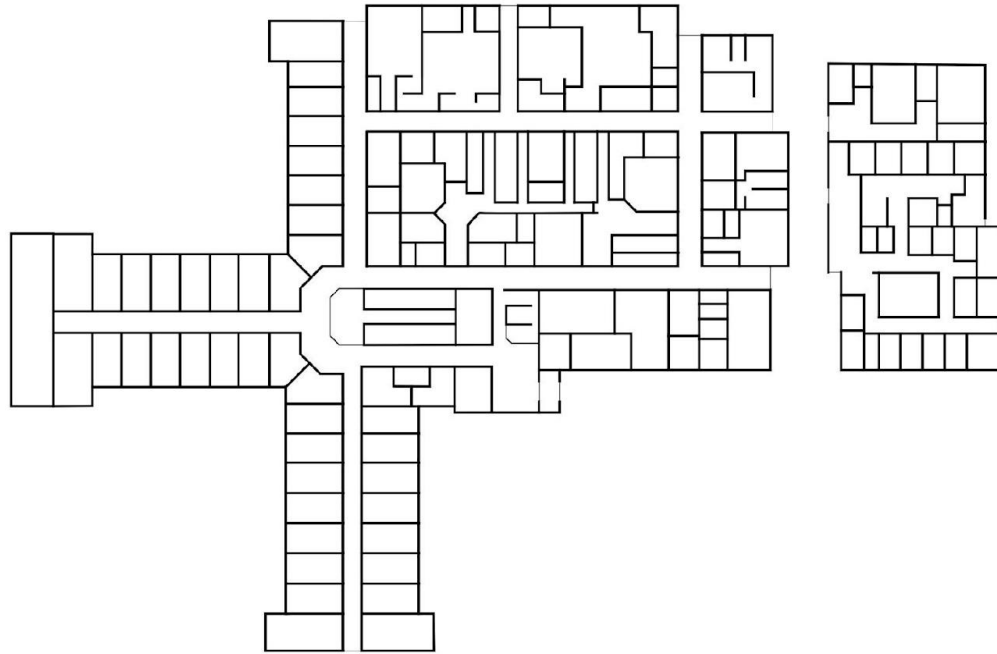


ASSESSMENT UPDATE
ROCKDALE ISD
HOSPITAL

Hospital – Existing Site Plan



Hospital – Existing Floor Plan



CAMPUS INFORMATION

- YEAR BUILT – 1974
- Seven (7) HIGH PRIORITY ITEMS
- Nine (9) MEDIUM PRIORITY ITEMS
- Three (3) LOW PRIORITY ITEMS
- MAJOR RENOVATION/UPDATE COST: 0-25% OF NEW SCHOOL
(DEPENDING ON SCOPE/LAYOUT)

PRIORITY LIST

- **HIGH PRIORITIES**
 - Modifications to Life/Fire Safety as Educational Facility
 - Accessible Parking/Path
 - Accessible Toilet Rooms
 - HVAC replacement (2 units)
 - Maintenance/Repair of single-play roofing system
 - Demolition/Wall Construction to meet CTE use
 - MEPT modifications to meet CTE use

- **MEDIUM PRIORITIES**
 - MEPT Upgrade Package
 - Accessible Path to High School
 - Structural (lateral support) verification



FACILITY TOUR & DISCUSSION



ROCKDALE ISD HIGHLIGHTS

District Highlights

Gifted the old hospital to renovate into a CTE center for students and community.

Partnership with Temple College to create a Hub in Rockdale

Partnership with HealthPoint for school-based healthcare clinics

Free breakfast and lunch for all Rockdale ISD students

Distinguished Alumni Awards Program

Increased student enrollment

Parent Communication App - ParentSquare

Language Line - Live Translation for Spanish-speaking families

Financial

- Maintain a balanced budget
- Raise of salaries to retain and attract personnel
- Clean audit (new CFO)
- A-Superior rating on the School Financial Integrity Rating System of Texas (FIRST)

District Highlights

- Full Day Free Pre-Kindergarten
- Before and After-school tutoring
- RIS: Academic Achievement in Mathematics
- RIS: Postsecondary Readiness
- RIS: Top 25% Comparative Closing the Gaps
- RJH: Academic Achievement in Social Studies
- Advanced placement courses
- Dual Credit Program with Temple College: Bioscience Institute

District Highlights

Career and Technical Education Programs of Study and Certifications

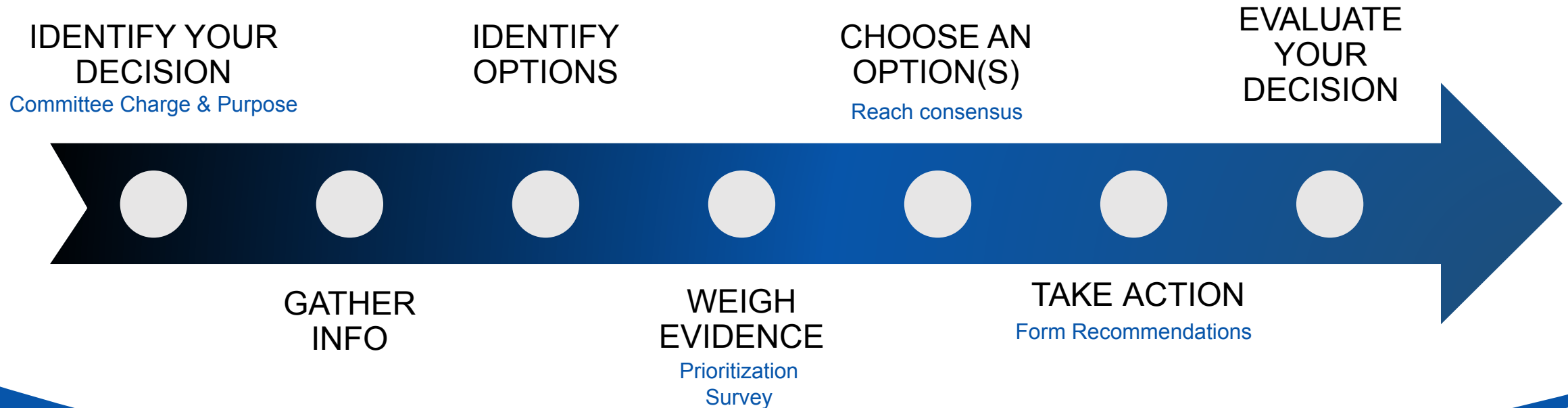
- Accounting & Financial Services
- Applied Agricultural Engineering
- Animal Science
- Construction Management
- Cybersecurity
- Entrepreneurship
- Graphic Design & Multimedia Arts
- Medical Therapy
- Mega Tech (Manufacturing & CAD)
- Nursing Science
- Plant Science
- Teaching & Training
- Welding



DECISION MAKING & DEFINING CONSENSUS

DECISION MAKING PROCESS

As a collective group, the Committee will make thoughtful, informed decisions concerning Rockdale ISD facilities.



DEFINE CONSENSUS

How will you make decisions as a committee and reach consensus on a recommendation to the Board of Trustees?

Options:

- Unanimous agreement
- Unanimous agreement minus one or two votes
- Unanimous consent (can “live with it”)
- Super majority thresholds (90%, 80%, 75%, two-thirds, and 60%)
- Simple Majority



MEETING WRAP-UP

NEXT MEETING

Meeting #2

Wednesday,
November 2

6:00 PM

*Rockdale
Elementary*

- Previous Meeting Review
- Facility Tour & Discussion
- School Finance 101
- District Financials
- District Demographics
- Facility Design & Functional Capacity
- Planning Objectives and Master Plan Concepts
- Introduce Potential Projects
- Discussion of Proposed Solutions



THANK YOU!