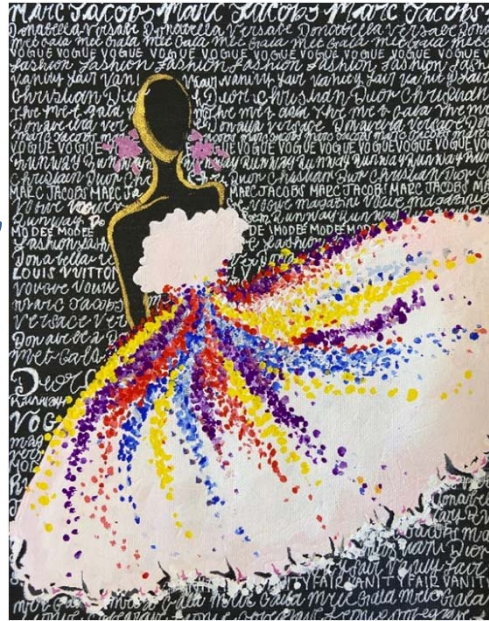


Student Enrollment



Sanai Malcolm, 8th Grade, Scofield



Leonie Colegrave, Class of 2022,
Westhill



Anisa Ria, Grade 6, Cloonan



Daniela
German
Grade 3,
Newfield

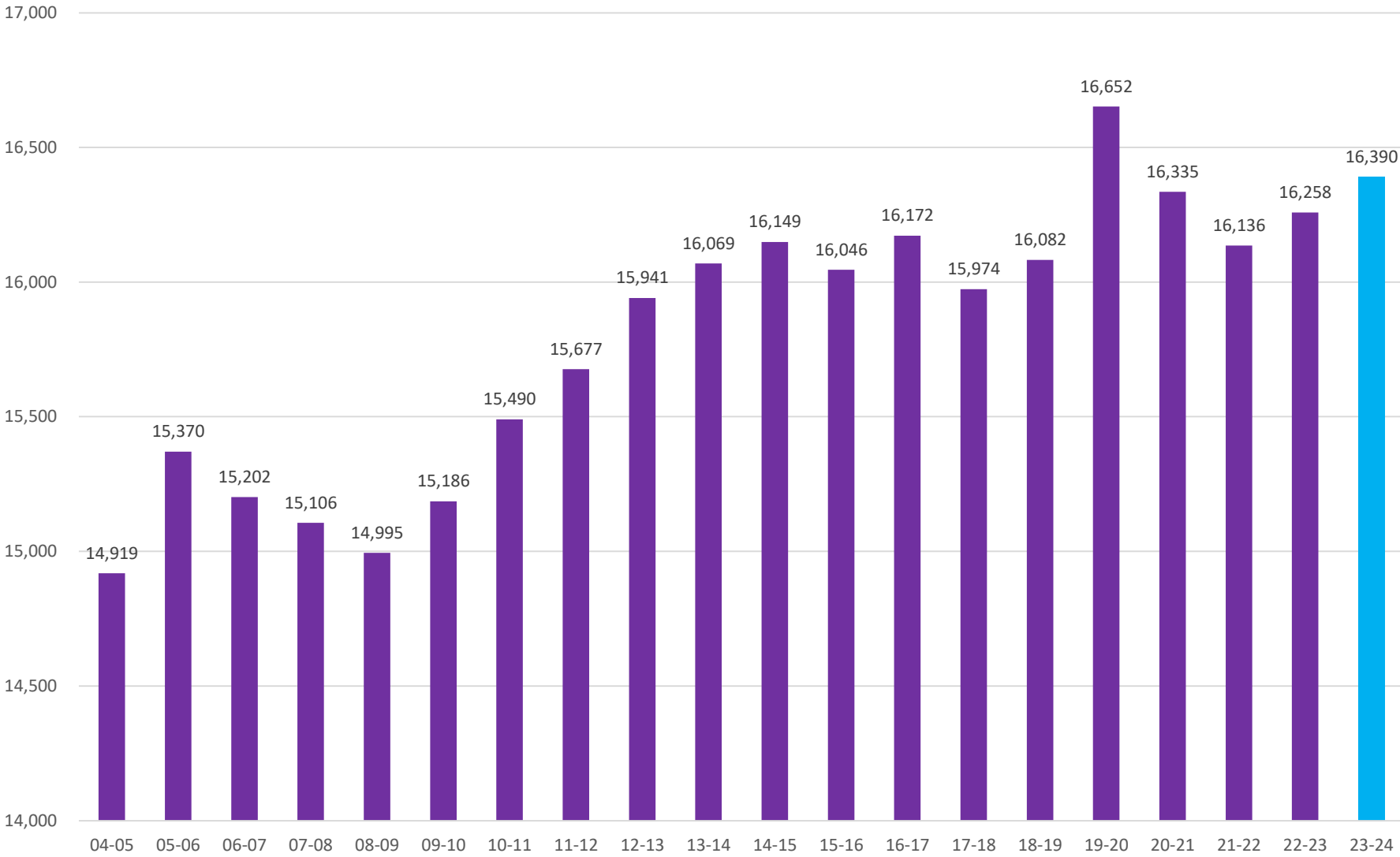


Stacey Peterson, Grade 9,
AITE



Francesca, Grade 2, Stark

**Stamford Public Schools
K-12 Enrollment as of October 1st
2004-2022 Actual
2023-24 Projected**



2023-24 BUDGET OF THE STAMFORD PUBLIC SCHOOLS

Total Enrollment by Level: Actual 2018-19 to 2022-23 and Projected 2023-24

	Actual 2018-19	Actual 2019-20	Actual 2020-21	Actual 2021-22	Actual 2022-23	Projected 2023-24	Change Actual 2022-23 to Projected 2023-24
Elementary School	7,526	7,659	7,363	7,145	7,120	7,038	(82)
Middle School	3,550	3,770	3,700	3,606	3,593	3,549	(44)
High School	4,506	4,682	4,787	4,884	4,958	5,216	258
Pre-Kindergarten	227	233	200	205	267	267	0
Sub Total District	15,809	16,344	16,050	15,840	15,938	16,070	132
Out-of-District Placement*	177	198	177	201	204	204	0
SPS Anchor at Harbor Landing	73	91	87	76	87	87	0
Individuals Achieving Independence	23	19	21	19	29	29	0
Total School Enrollment	16,082	16,652	16,335	16,136	16,258	16,390	132

*Includes Juvenile Justice

2023-24 BUDGET OF THE STAMFORD PUBLIC SCHOOLS

Elementary Enrollment by School: Actual 2018-19 to 2022-23 and Projected 2023-24

	Actual 2018-19	Actual 2019-20	Actual 2020-21	Actual 2021-22	Actual 2022-23	Projected 2023-24	Change Actual 2022-23 to Projected 2023-24
Davenport Ridge School	620	632	610	611	660	665	5
Julia A. Stark School	594	567	575	574	596	603	7
New School at 200 Strawberry Hill Avenue	431	523	619	569	557	561	4
Stillmeadow School	632	652	610	630	620	618	(2)
K. T. Murphy School	499	482	465	431	394	369	(25)
Springdale School	572	558	541	548	580	580	0
Rogers International School	542	560	550	497	511	510	(1)
Westover School	683	606	569	534	532	512	(20)
Hart School	609	604	565	532	553	558	5
Toquam Magnet School	637	665	605	570	533	515	(18)
Roxbury School	569	603	570	562	563	539	(24)
Newfield School	522	554	513	523	526	528	2
Northeast School	616	653	571	564	495	480	(15)
Sub Total	7,526	7,659	7,363	7,145	7,120	7,038	(82)
Pre-Kindergarten	227	233	200	205	267	195	(72)
Total Elementary	7,753	7,892	7,563	7,350	7,387	7,233	(154)

Notes:

1. Special Education and Bilingual Program students are counted in their schools.
2. The estimated 249 sixth, seventh and eighth graders at Rogers, and the estimated 259 sixth, seventh and eighth graders at Strawberry Hill are included in middle school counts, not in the elementary counts.
3. Enrollment at Rogers and Strawberry Hill includes out-of-town students

2023-24 BUDGET OF THE STAMFORD PUBLIC SCHOOLS

Middle School Enrollment by School: Actual 2018-19 to 2022-23 and Projected 2023-24

	Actual 2018-19	Actual 2019-20	Actual 2020-21	Actual 2021-22	Actual 2022-23	Projected 2023-24	Change Actual 2022-23 to Projected 2023-24
Rippowam Middle School	752	787	808	746	729	694	(35)
Turn of River School	652	685	663	673	664	636	(28)
Cloonan School	632	712	696	626	575	555	(20)
Scofield Middle School	646	645	643	587	587	571	(16)
Dolan School	601	660	629	626	611	585	(26)
Rogers International School	267	281	261	258	255	249	(6)
Strawberry Hill School	0	0	0	90	172	259	87
Total Middle	3,550	3,770	3,700	3,606	3,593	3,549	(44)

2023-24 BUDGET OF THE STAMFORD PUBLIC SCHOOLS

High School Enrollment By School: Actual 2018-19 to 2022-23 and Projected 2023-24

	Actual 2018-19	Actual 2019-20	Actual 2020-21	Actual 2021-22	Actual 2022-23	Projected 2023-24	Change Actual 2022-23 to Projected 2023-24
Westhill High School	2,128	2,241	2,243	2,285	2,266	2,323	57
Stamford High School	1,740	1,812	1,916	1,974	2,044	2,219	175
The Academy of Information Technology	638	629	628	625	648	674	26
Subtotal High School	4,506	4,682	4,787	4,884	4,958	5,216	258
SPS Anchor at Harbor Landing	73	91	87	76	87	87	0
Individuals Achieving Independence	23	19	21	19	29	29	0
Total High School	4,602	4,792	4,895	4,979	5,074	5,332	258