



KINGMAN
Unified School District

KUSD welcomes all students on a learning pathway to informed and engaged citizenship.

Learning Pathway refers to the specific academic programs and learning experiences individual students complete as they progress toward graduation.

Informed means making decisions based on the knowledge of facts in any situation.

Engaged encompasses a person's attention, curiosity, interest, optimism and passion.

Citizenship represents the state of being a member of a group and behaving responsibly as staff and students.



STRATEGIC PLAN PRIORITIES

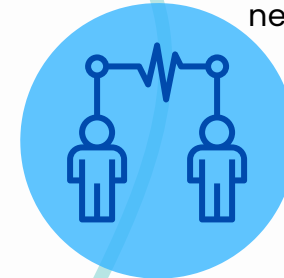


Staff & Student Wellbeing

KUSD is committed to a district-wide focus on providing services to address the physical, emotional, relationship and intellectual needs of staff & students.

Communication & Collaboration

KUSD provides opportunities to engage in meaningful, two-way communication about what is important to stakeholders by building responsible partnerships with families and the community.



Equitable & Accessible Learning Space

KUSD builds district and school systems that lead to engaging and relevant learning opportunities for all staff & students.



Effective & Transparent Transitions

KUSD plans for milestone transitions where all stakeholders know the pathways and measures of success from pre-k through high school graduation and the world beyond the classroom.



EST. 2002

KUSD #20

Public School District