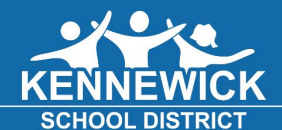




STRONG
SCHOOLS
STRONG
COMMUNITY



About Kennewick School District

(As of October 2022)



19,005*
Students

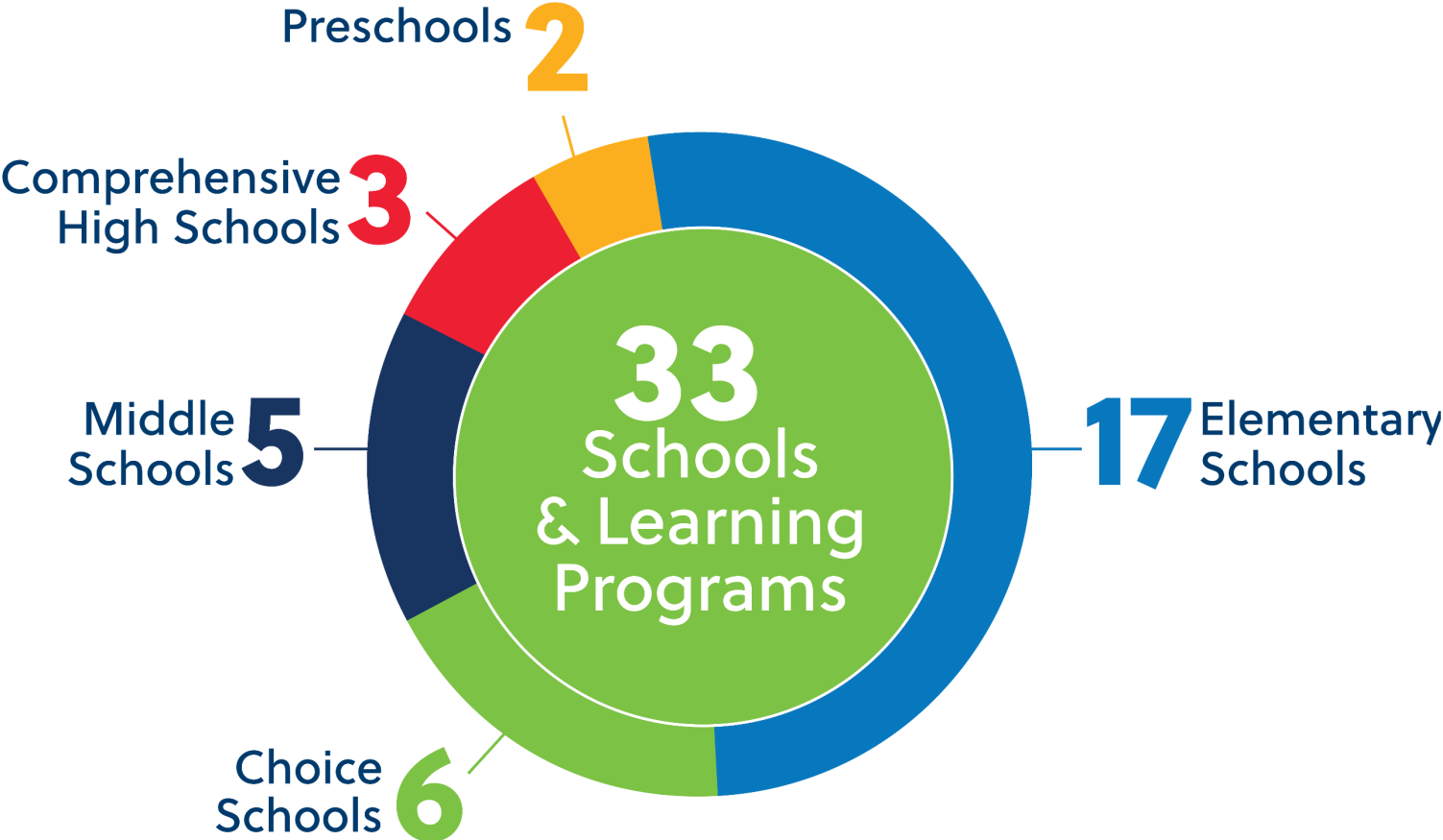
* As of October, 2022



1,123
Classified Staff



1,324
Certified Staff



Our Vision

All KSD Students are Known Well, Safe and Destined to Reach their Highest Potential



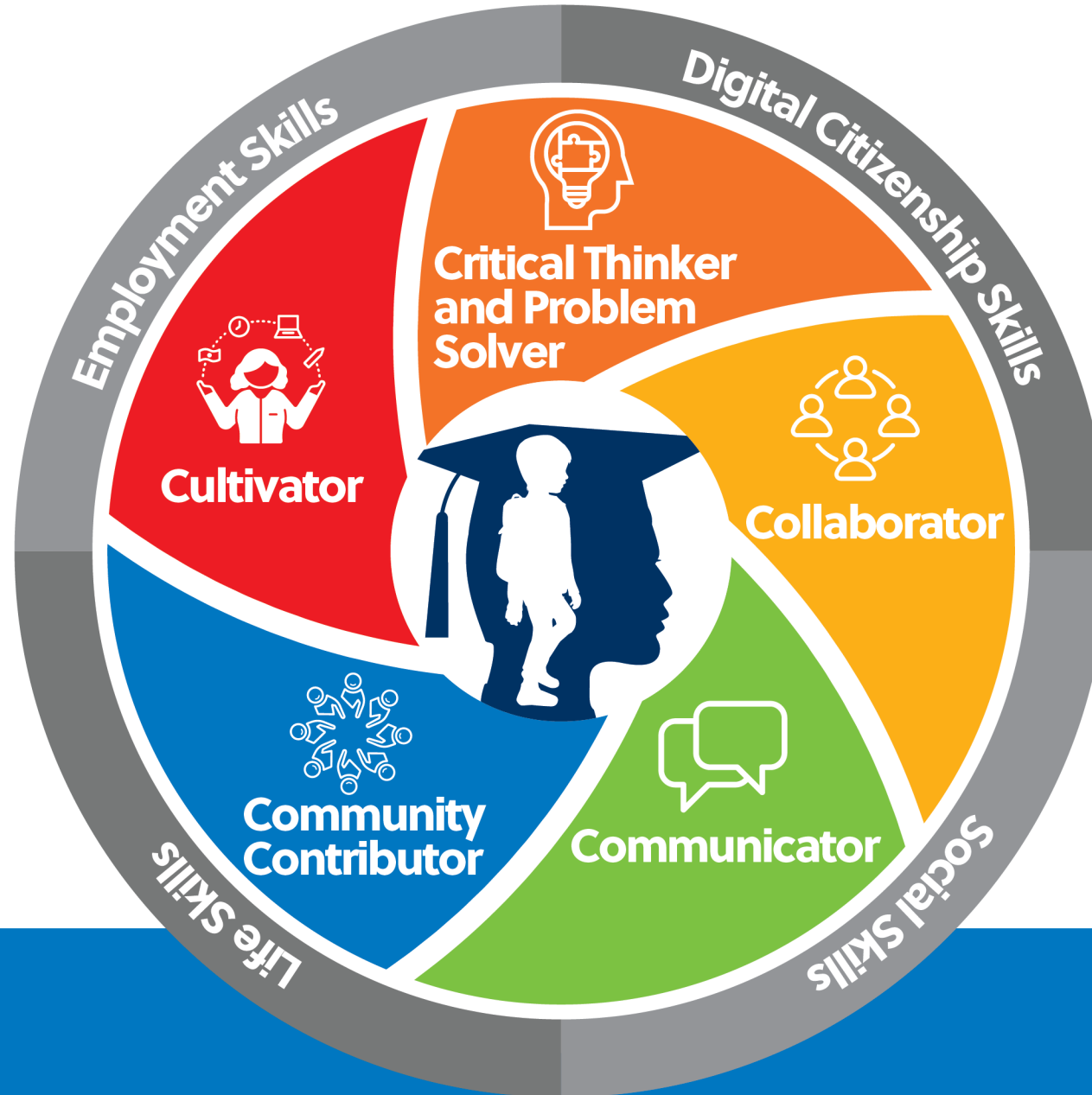
STRATEGIC GOALS



Our Mission

To provide a safe environment in which all students reach their highest potential and graduate well prepared for success in post-secondary education, work and life.

LEARNER PROFILE



EDUCATIONAL PROGRAMS & OPERATIONAL LEVY

Election - February 14, 2023



Levies fund people, programs,
and partnerships that help us
achieve our goals for our
students.



**READY FOR
THEIR FUTURE**



**ENGAGED
LEARNERS**



**SAFE, KNOWN
AND VALUED**

WHY DO WE NEED LEVIES?



The state doesn't fully fund school district staffing, operations and programs.

Legislative Building dome with the cherry trees in bloom, 1998, General Subjects Photograph Collection, 1845-2005, Washington State Archives, Digital Archives



The state expects school districts to secure local levy funding to help fund schools.



When KSD passes levies, we receive additional state levy equalization funding called Local Effort Assistance (LEA).

LEVIES **LEARNING**

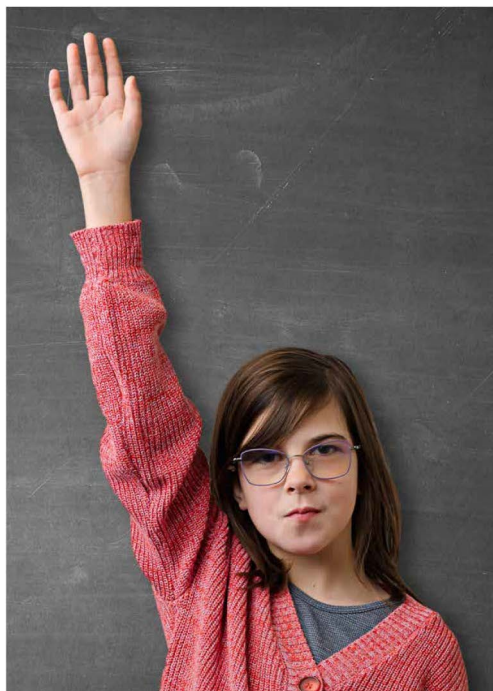


OUR HISTORY

The Kennewick community has a long history of supporting schools by passing bonds and levies.

2019: Bond passed

2022: Technology Levy passed



2022 EP&O LEVY

February 2022: Levy failed at 49.01%

April 2022: Levy failed again at 48.97%

- \$34 million loss in revenue for 2022-23 and 2023-24 school years.
- Includes both the loss of the levy funding and the loss of additional state Local Effort Assistance (LEA) funding.





IMPACT TO BUDGET

- Made \$5.0 million in staff and non-staff related budget reductions and savings for the 2022-23 school year
- Using one-time funds to avoid deeper cuts
 - \$10.0 Million Federal ESSER/COVID Relief
 - \$15.0 Million District Fund Balance



IMPACT TO STUDENTS

\$3.0 Million in Staff-Related Budget Reductions

- **Administration, Maintenance & Operations, Custodial, Teaching, Curriculum and Secretarial Positions**
- **Professional Development**

\$2.0 Million In Non-Staff Budget Reductions

- **Curriculum Adoption**
- **Maintenance/Fleet/Grounds**
- **Building Budgets**

2023 EDUCATIONAL PROGRAMS & OPERATIONS LEVY

**Unanimously
supported and
approved by the
Board**

**Fiscally responsible
in the short and
long term**

**Maintains programs
and staffing, avoids
undesired budget
cuts, and aligns with
our strategic goals**

**Ensures the district
continues to
implement system
efficiencies**

**Allows the district to
make strategic
investments and
systemic
improvements**

**Supported by a
majority of voters**

WHY DO WE NEED LEVIES?



Safer schools



**Engaged, future
ready learners**



**Supports for
students and
staff**



**Well-maintained
facilities and
services**



**Opportunities
for students**



SAFER SCHOOLS

- Middle & High School Resource Officers (SROs)
- **NEW:** Add 3 Additional Middle School SROs
- **NEW:** Add Elementary Safety Officers
- Security Staff
- Nurses
- Psychologists
- Drug & Alcohol Prevention
- Crosswalk Safety

\$5.2 Million





ENGAGED, FUTURE READY LEARNERS

- Graduation Success Coordinators
- Advanced Placement
- International Baccalaureate
- Special Education Support
- Professional Development & Training
- Dual Language
- Librarians
- Substitute Teachers

\$14.7 Million



A photograph of a classroom scene. In the foreground, a student's hand holds a yellow pencil over an open textbook. Another student is visible in the background, also working at a desk. The image is partially obscured by a dark blue overlay on the right side.

SUPPORT FOR STUDENTS AND STAFF

- Secretaries
- Paraeducators
- Classified Substitutes
- Curriculum

\$9.9 Million





WELL-MAINTAINED FACILITIES AND SERVICES

- Custodians
- Grounds & Maintenance Workers
- Transportation

\$4.5 Million





OPPORTUNITIES FOR STUDENTS

- Extracurricular Activities and Athletics
- Coaches
- Advisors

\$3.9 Million



WHAT'S ON THE BALLOT?

- 3-Year Levy
- Declining Tax Rate

PROPOSITION NO. 1

KENNEWICK SCHOOL DISTRICT NO. 17

EDUCATIONAL PROGRAMS AND OPERATIONS LEVY

The Board of Directors of Kennewick School District No. 17 adopted Resolution No. 1, 2022-2023, concerning a proposition to finance educational programs and operations expenses. This proposition would authorize the District to meet the educational needs of its students by levying the following excess taxes, on all taxable property within the District, for educational programs and operations expenses not funded by the State of Washington:

<u>Collection Year</u>	<u>Estimated Levy Rate/\$1,000 Assessed Value</u>	<u>Levy Amount</u>
2024	\$1.73	\$23,000,000
2025	\$1.68	\$23,850,000
2026	\$1.63	\$24,700,000

all as provided in Resolution No. 1, 2022-2023. Should this proposition be approved?

LEVY . . . YES ☐

LEVY . . . NO ☐





WHAT'S ON THE BALLOT?

2024	2025	2026
\$23,000,000	\$23,850,000	\$24,700,000
\$1.73*	\$1.68*	\$1.63*

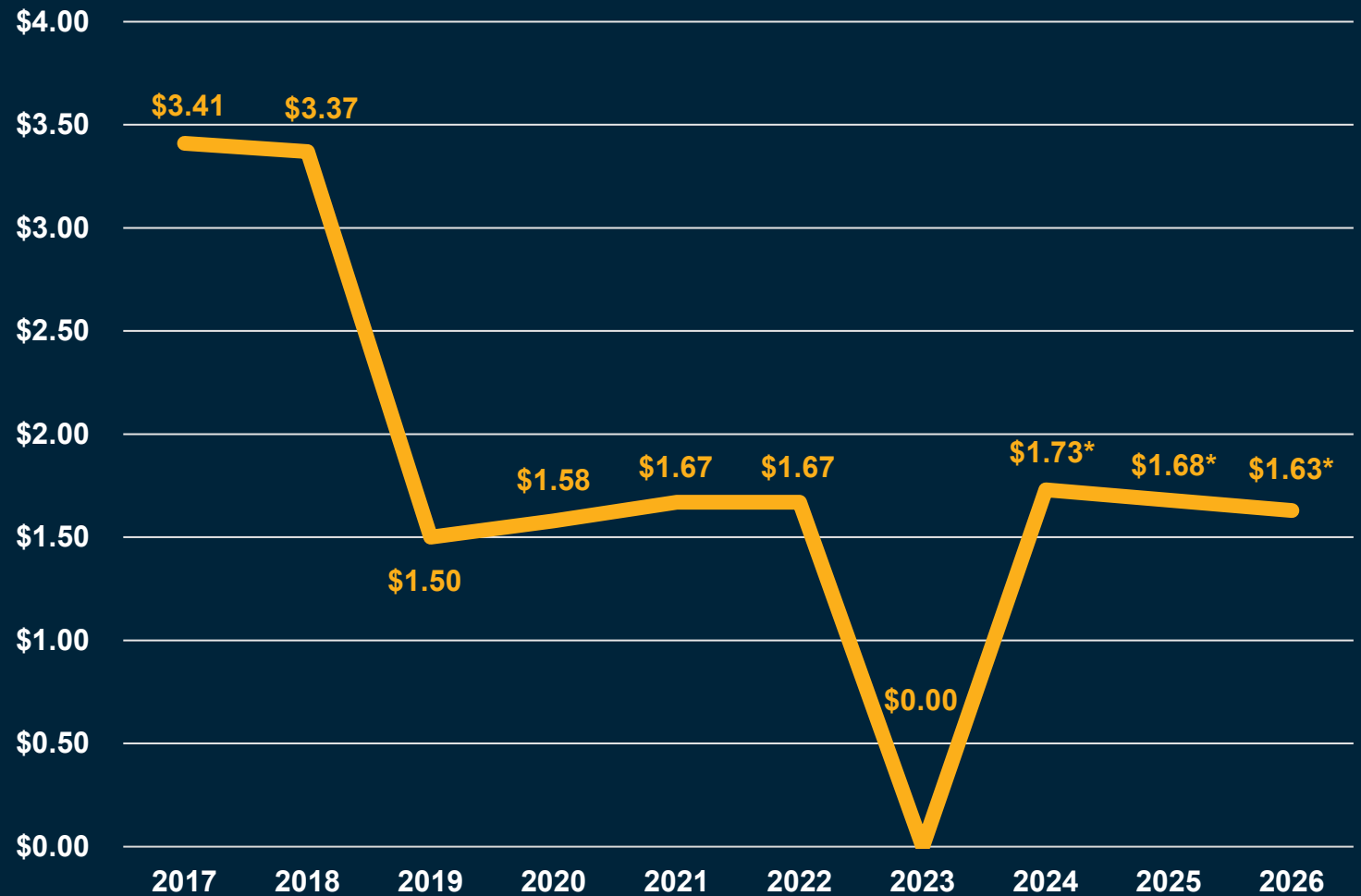
*Est. Tax Rate Per \$1,000 of Assessed Property Value

EST. TAX SCENARIOS



	\$250,000	\$ 350,000	\$ 450,000
2024	\$432.50	\$605.50	\$778.50
2025	\$420.00	\$588.00	\$756.00
2026	\$407.50	\$570.50	\$733.50

HISTORICAL AND FUTURE LEVY TAX RATE



*Est. Tax Rate Per \$1,000 of Assessed Property Value

TOTAL SCHOOL TAX RATE

	2017	2018	2019	2020	2021	2022	2023	2024	2025	2026
KSD Educational Programs & Operations Levy	\$3.41	\$3.37	\$1.50	\$1.58	\$1.66	\$1.67	---	\$1.73 est.	\$1.68 est.	\$1.63 est.
KSD Capital Technology levy	---	---	\$0.47	\$0.43	\$0.40	\$0.37	\$0.34	\$0.34	\$0.34	\$0.34
WA State Basic Education Levies	\$2.15	\$3.17	\$2.74	\$3.07	\$2.68	\$2.63	\$2.57	\$2.52	\$2.47	\$2.42
KSD Capital Projects Bond	\$1.61	\$1.62	\$1.52	\$1.67	\$1.63	\$1.60	\$1.39	\$1.39	\$1.36	\$1.36
Total	\$7.17	\$8.16	\$6.23	\$6.75	\$6.37	\$6.27	\$4.30	\$5.98	\$5.85	\$5.75

WITHOUT A LEVY

- Our community loses \$15 million a year in state Levy Equalization (LEA) Funding for schools.
- Our schools lose the opportunity to be safer.
- The district will need to make significant budget cuts that will impact people, programs, and partnerships.
- We lose staff, and our students lose support and opportunities.





WITH A LEVY

- We have safer schools.
- We maintain staff.
- We keep supports and opportunities for students.
- We receive \$15 million in additional state funding each year.



PLEASE VOTE

Election - February 14, 2023

