

# Milford Middle School Project

## Design & Project Progress

# Milford Middle School Project Timeline



# Architectural Engineer

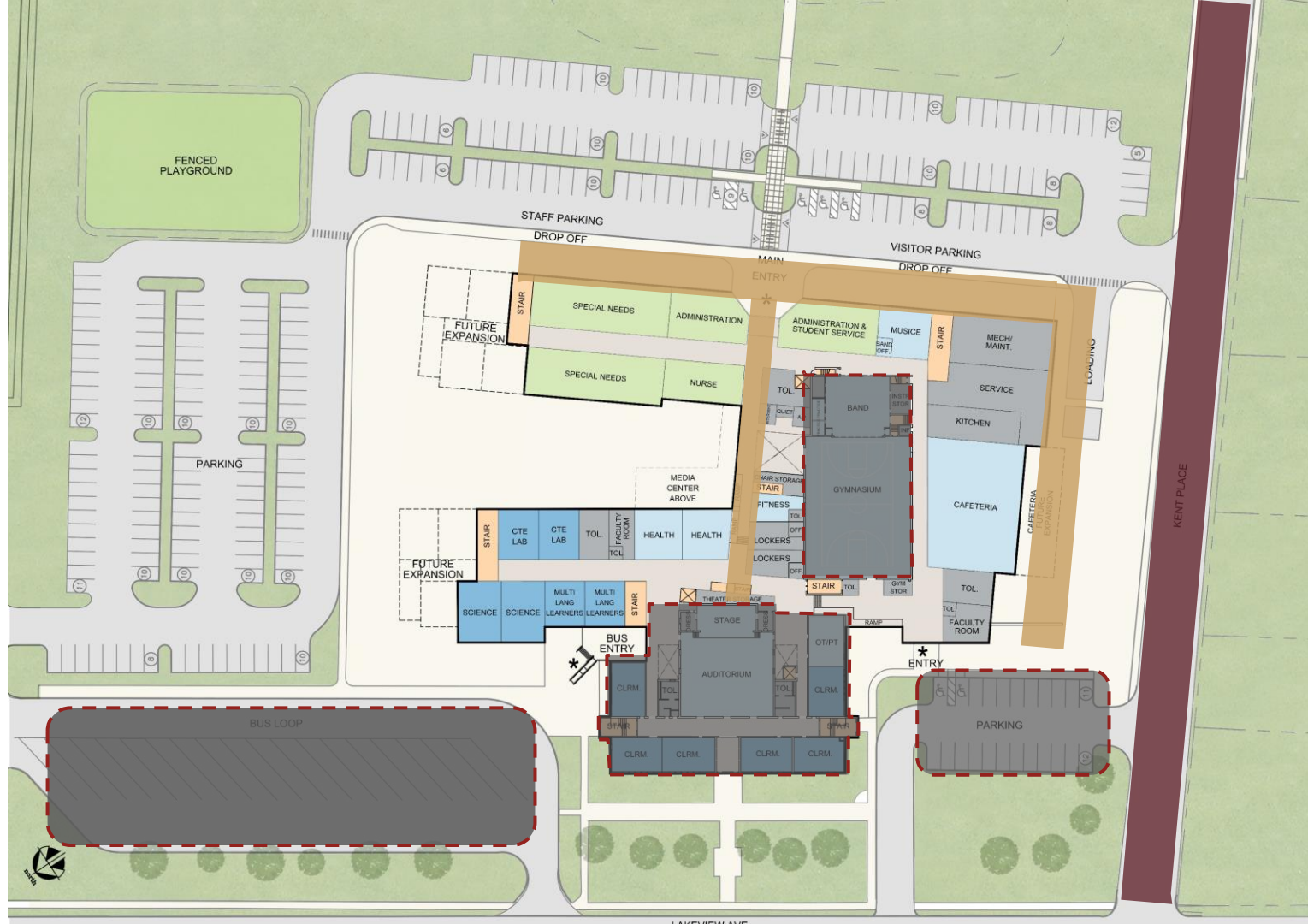
BSA+A

(Buck Simperts Architect + Associates, Inc.)













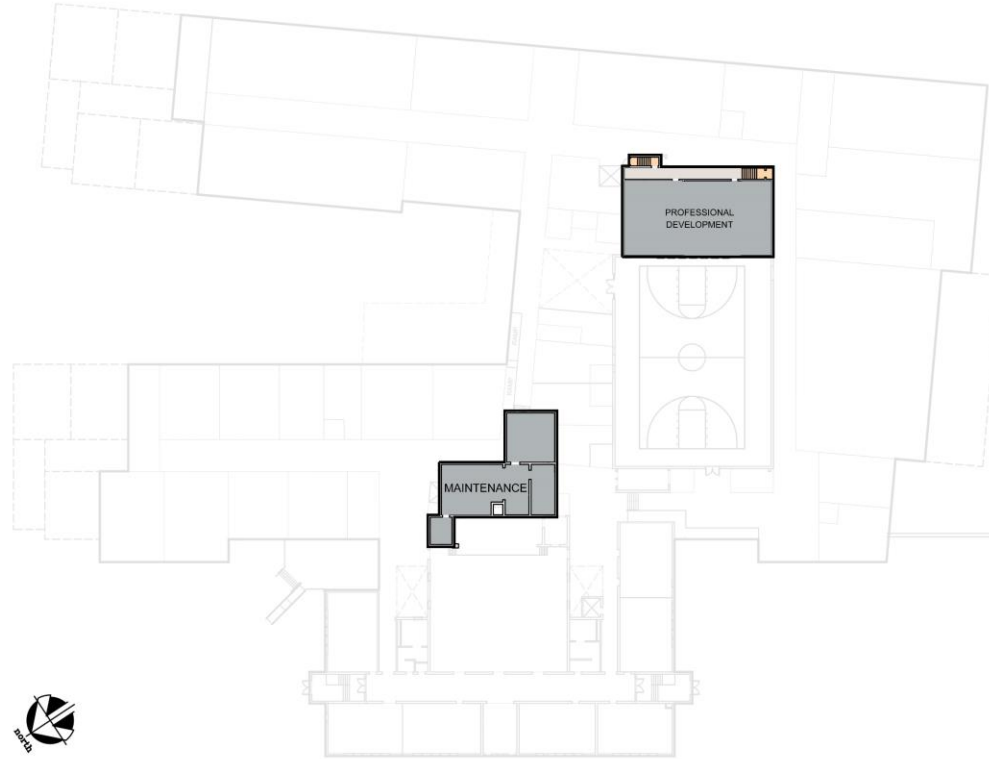
FIRST FLOOR PLAN





SECOND FLOOR PLAN

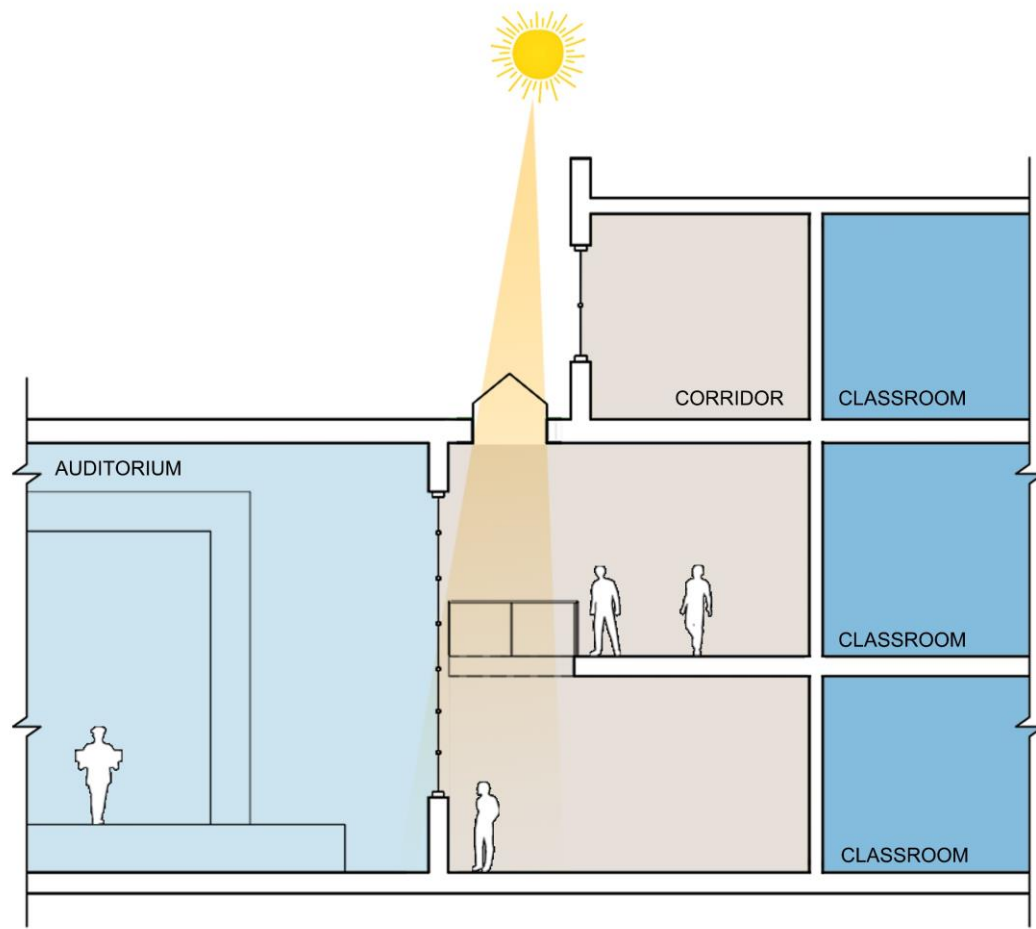




LOWER FLOOR PLAN





























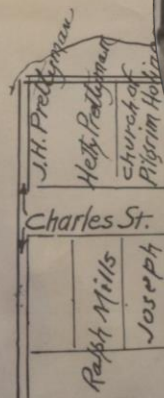




# Preserve the School's History and...

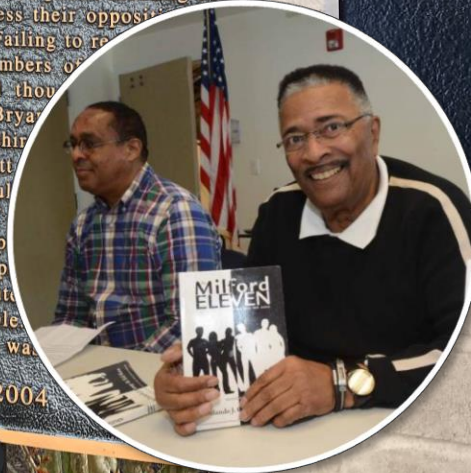
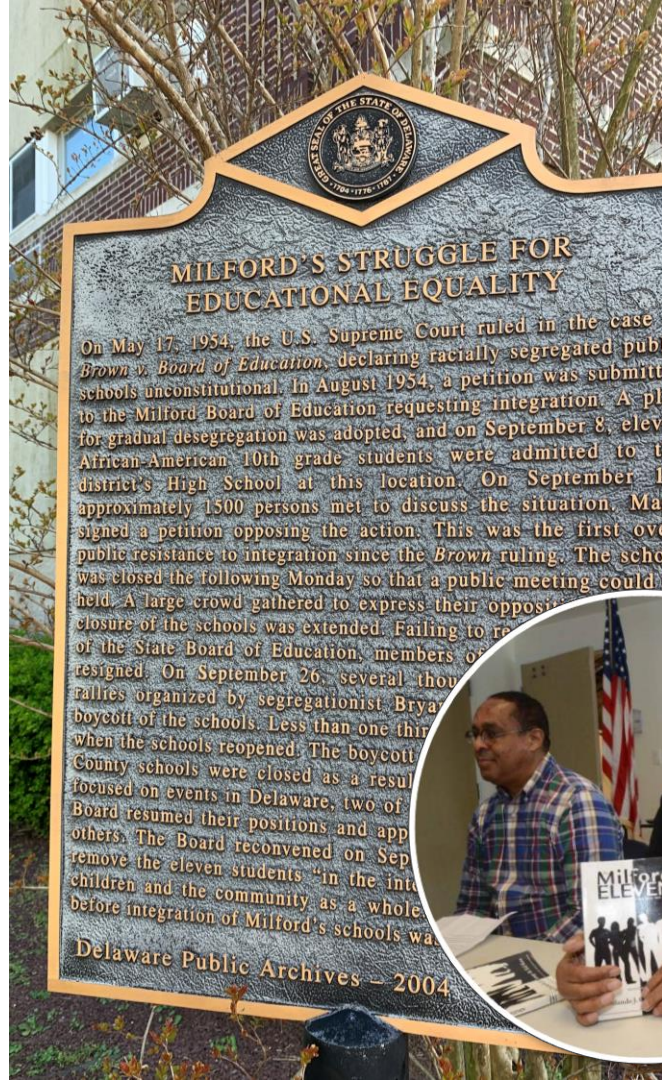


MILFORD  
HIGH-SCHOOL





...keep the history alive  
for future generations







We welcome your feedback! Submit your  
questions/comments/suggestions:



<https://www.milfordschooldistrict.org/our-district/major-capital-projects/milford-middle-school/mms-project-feedback>

Additional information can be found on the district website:  
[www.milfordschooldistrict.org/our-district-major-capital-projects/milford-middle-school](https://www.milfordschooldistrict.org/our-district-major-capital-projects/milford-middle-school)