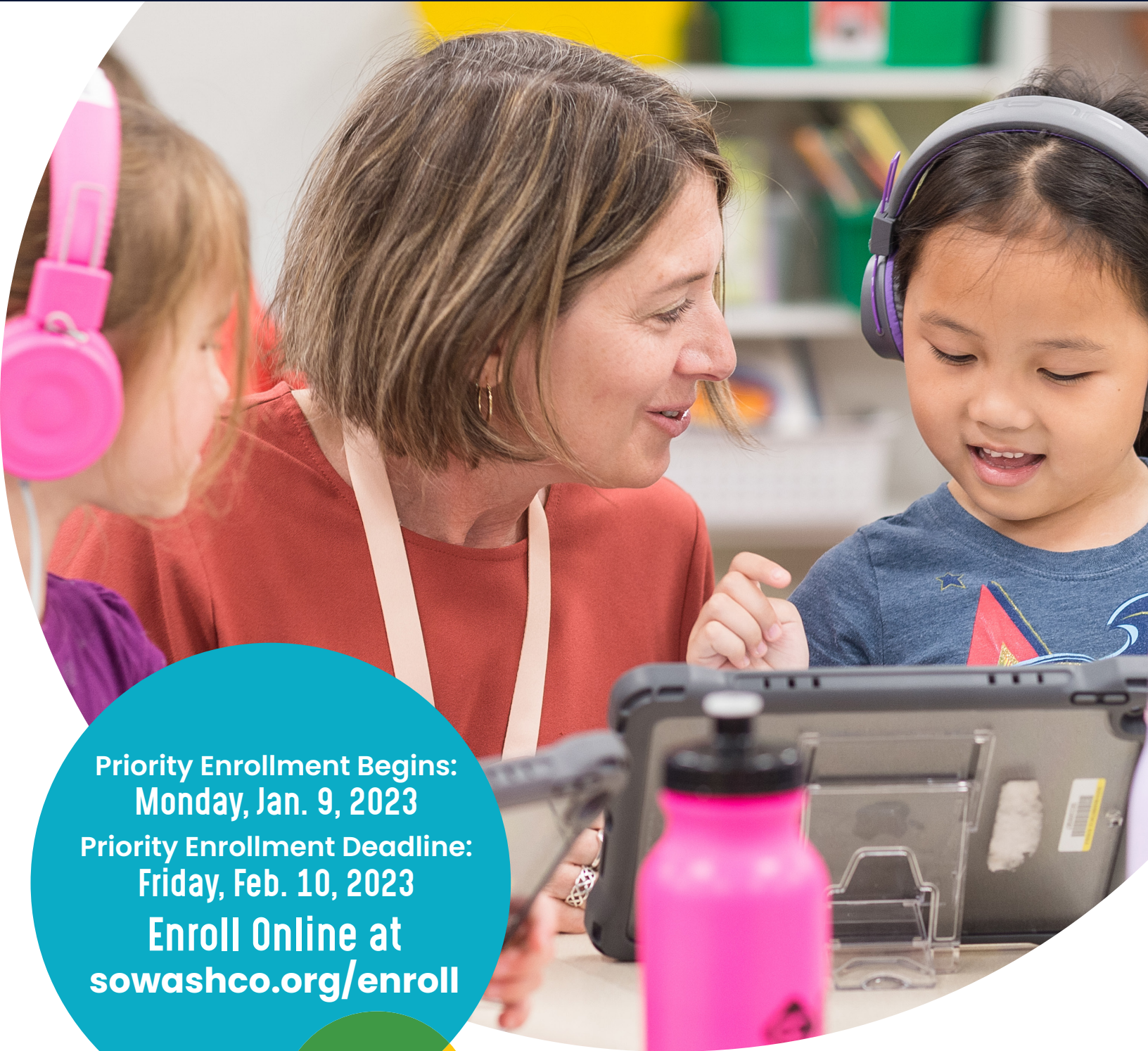


# 2023–24 School and Enrollment Guide



Priority Enrollment Begins:  
Monday, Jan. 9, 2023  
Priority Enrollment Deadline:  
Friday, Feb. 10, 2023  
Enroll Online at  
[sowashco.org/enroll](https://sowashco.org/enroll)

**SoWashCo**  
SCHOOLS

COTTAGE GROVE | NEWPORT | ST. PAUL PARK | WOODBURY | AFTON | DENMARK | GREY CLOUD ISLAND

## About SoWashCo Schools

South Washington County Schools (SoWashCo Schools) is located southwest of St. Paul. The district includes all or parts of the communities of Cottage Grove, Newport, St. Paul Park, Woodbury and Afton, Denmark and Grey Cloud Island Townships. SoWashCo has 16 elementary schools, four middle schools, three traditional high schools, an alternative high school and an online high school.

**Be seen. Be heard. Be bold.**

## Important Dates

### Monday, Jan. 9, 2023

- Priority Enrollment Opens
- School Tours Begin, find your school's tour dates on pages 3-5

### Tuesday, Jan. 10, 2023, 5-6:30 p.m.

- Nuevas Fronteras Spanish Immersion Magnet Program Information Night

### Thursday, Jan. 12, 2023, 5-6:30 p.m.

- Valley Crossing Multiage Magnet Program Information Night

### Friday, Feb. 10, 2023

- School Tours End
- Priority Enrollment and Magnet Program Application Deadline

### Mid-Aug.

- School Open Houses

### Tuesday, Sept. 5, 2023

- First Day of School



## Table of Contents

School Tour Dates	3-5
How to Enroll	5-6
Transportation Information	7
Programs Before and After School	8-9
• Athletics and Activities	
• Kids Club	
Early Childhood Education	10-11
• Early Childhood Screening	
• Preschool	
• Pre-kindergarten	
• Early Childhood Family Education (ECFE)	
• Early Childhood Special Education (ECSE)	
Special Education	12-13
Young Adult Learners	13
• Next Step	
• Next Step Pathways	
Student Support	14
• English Learner	
• Cultural Liaisons	
• Counseling	
• Technology	
Elementary Schools	15-21
Middle Schools	22-24
High Schools	25-28
Talent Development and Advanced Academics	29
Great Rivers Adult Education Consortium	30
District Directory and School Board	31-32
Enrollment Questions and Answers	33
Health Services and Required Immunizations	34-35
Nutrition Services	36
Educational Benefits	37
Family Resources	38
Join Our Team	39



# Take a Tour of Your Boundary or Magnet School

Please plan for about an hour for each tour. Tours will be given by a school representative.

## K-5 Elementary Tour Dates and Times

Day	Dates	Time	School
Monday	<ul style="list-style-type: none"> <li>Jan. 9</li> <li>Jan. 16</li> <li>Jan. 23</li> <li>Jan. 30</li> <li>Feb. 6</li> </ul>	9:30 a.m.	<ul style="list-style-type: none"> <li>Red Rock Elementary</li> <li>Newport Elementary</li> </ul>
Tuesday	<ul style="list-style-type: none"> <li>Jan. 10</li> <li>Jan. 17</li> <li>Jan. 24</li> <li>Jan. 31</li> <li>Feb. 7</li> </ul>	9 a.m.	<ul style="list-style-type: none"> <li>Hillside Elementary</li> <li>Pine Hill Elementary</li> <li>Woodbury Elementary</li> </ul>
		9:15 a.m.	<ul style="list-style-type: none"> <li>Valley Crossing Elementary</li> </ul>
		10 a.m.	<ul style="list-style-type: none"> <li>Cottage Grove Elementary</li> <li>Royal Oaks Elementary</li> <li>Bailey Elementary</li> </ul>
Wednesday	<ul style="list-style-type: none"> <li>Jan. 11</li> <li>Jan. 18</li> <li>Jan. 25</li> <li>Feb. 1</li> <li>Feb. 8</li> </ul>	9 a.m.	<ul style="list-style-type: none"> <li>Crestview Elementary</li> <li>*Jan. 11, Jan. 25 and Feb. 8 <b>only</b></li> </ul>
		9:30 a.m.	<ul style="list-style-type: none"> <li>Armstrong Elementary</li> <li>Pullman Elementary</li> <li>Liberty Ridge Elementary</li> <li>Nuevas Fronteras Spanish Immersion</li> </ul>
		3 p.m.	<ul style="list-style-type: none"> <li>Crestview Elementary</li> <li>*Jan. 18 and Feb. 1 <b>only</b></li> </ul>
Thursday	<ul style="list-style-type: none"> <li>Jan. 12</li> <li>Jan. 19</li> <li>Jan. 26</li> <li>Feb. 2</li> <li>Feb. 9</li> </ul>	9 a.m.	<ul style="list-style-type: none"> <li>Middleton Elementary</li> </ul>
		10 a.m.	<ul style="list-style-type: none"> <li>Woodbury Elementary</li> </ul>
Friday	<ul style="list-style-type: none"> <li>Jan. 13</li> <li>Jan. 20</li> <li>Jan. 27</li> <li>Feb. 3</li> <li>Feb. 10</li> </ul>	9:30 a.m.	<ul style="list-style-type: none"> <li>Grey Cloud Elementary</li> </ul>

# Take a Tour of Your Boundary or Magnet School

Please plan for about an hour for each tour. Tours will be given by a school representative.

## Preschool and Pre-K Tour Dates and Times

To learn about our early learning programs (ECFE, ECSE, Preschool and Pre-K), see pages 10-11.

Date	Times	School
Monday, Jan. 9	1 p.m., 2 p.m., 3 p.m. and 4 p.m.	Liberty Ridge Site 2
Monday, Jan. 23	1 p.m., 2 p.m., 3 p.m. and 4 p.m.	Liberty Ridge Site 2
Monday, Feb. 6	1 p.m., 2 p.m., 3 p.m. and 4 p.m.	Liberty Ridge Site 2

## Magnet Program Information Nights

A short presentation will be made about the magnet programs and school representatives will be available to help answer questions.

**Please Note:** Students enrolled in the Spanish Immersion program will continue the program in Woodbury Middle School and Woodbury High School.

Date	Time	School
Tuesday, Jan. 10	5-6:30 p.m.	Nuevas Froneras Spanish Immersion
Thursday, Jan. 12	5-6:30 p.m.	Multiage at Valley Crossing Elementary

## Middle School Tour Schedule

Available for Cottage Grove, Lake, Olman and Woodbury Middle Schools

Date	Morning	Afternoon	Afternoon	Evening
Tuesday, Jan. 17	9 a.m.	12 p.m.	3 p.m.	4 p.m.
Tuesday, Jan. 24	9 a.m.	12 p.m.	3 p.m.	4 p.m.
Tuesday, Jan. 31	9 a.m.	12 p.m.	3 p.m.	4 p.m.
Tuesday, Feb. 7	9 a.m.	12 p.m.	3 p.m.	4 p.m.



# Take a Tour of Your Boundary or Magnet School

## High School Tour Schedule

Tours at East Ridge, Park and Woodbury High Schools are available upon request and can be scheduled online at [sowashco.org/enroll](https://sowashco.org/enroll). To schedule a tour at South Washington Alternative High School, please call 612-425-7000.

## High School Evening of Opportunity

Students and families will learn about course registration, activities, SoWashCo Online and more. Academic departments will be available to answer questions and help with required and elective courses. Student representatives will help answer questions about our many clubs and student organizations.

Date	Time	School
Monday, Jan. 9	6-8 p.m.	East Ridge High School
	5:30-7:30 p.m.	Park High School
	4-4:45 p.m. (virtual)	SoWashCo Online
	5:30-7:30 p.m.	Woodbury High School

## How to Enroll in SoWashCo Schools (PreK-12)

### Review

- Determine your boundary school.
- Determine if an elementary magnet program or if a non-traditional high school is right for your child. Learn more on pages 19, 21 and 28.

### Gather

- Gather your child's:
  - Proof of Birth (birth certificate or equivalent)
  - Address verifications
- Proof of completion of state required health and developmental screening (if not completed through SoWashCo Schools)
  - More information can be found on page 10.

### Enroll

- Complete an online enrollment application form by **Friday, Feb. 10, 2023** for priority enrollment.
  - **Applications for elementary magnet programs must be completed by Friday, Feb. 10, 2023.**

### Notification

- Families will be notified of a student's acceptance to a magnet program in March.
- Your child's school will provide information for the 2023-24 school year in August.

# Who Should Enroll?

## A K-12 enrollment application form *is* required if your child will be:

- Entering kindergarten
- New to the district
- Students that live in the district, but are currently attending another public school, charter school, a non-public school or are being homeschooled and want to return to one of the schools in SoWashCo.
- Students that do not live in the district, but want to attend SoWashCo Online (grades 9-12).



**NOTE: Early childhood screening is required** by the State of Minnesota prior to entering Pre-K or kindergarten. Learn more about our free screening service on page 10.

## Enrollment application forms are *not* required for:

- Students who are continuing to the next grade level at SoWashCo Schools.
- Students that currently attend in the district that want to attend SoWashCo Online (grades 9-12).

### Admission Priorities

#### Priority is given to students who:

- Live within the area of their boundary school
- Residents living within SoWashCo Schools boundaries
- Children of SoWashCo Schools employees
- Siblings of current open enrolled students attending SoWashCo Schools
  - Sibling priority does not guarantee acceptance into the district

### Other Considerations

- Students living outside of SoWashCo Schools boundaries are admitted to district schools if space allows
  - **Families must complete an open enrollment form** which can be found at [sowashco.org/enroll](https://sowashco.org/enroll).

## Waiting Lists

Waiting lists are created for schools and programs that receive more enrollment applications than space available. Families that apply to a magnet program will remain on the waiting list for one school year. If their child is not selected within the year, families can choose to reapply.

**Families applying for a magnet program must also enroll in their boundary school.**

## Magnet Program Admissions Lottery (for incoming kindergarten students)

- Enrollment requests for the elementary magnet programs is available when completing the online enrollment application, see page 5.
- Enrollment for Nuevas Fronteras Spanish Immersion and Valley Crossing Multiage program is determined by a lottery process.
- Families will be notified of the results of the lottery in March.
- Families not selected in the lottery will be placed on a waiting list for the magnet program and enrolled in their boundary school.

The priority enrollment application deadline for magnet programs is Friday, Feb. 10, 2023.

Families will be notified of lottery results in March.

## Magnet Program Admission for Students Currently in Grades K-4

Families of students currently in grades K-4 that want to apply for one of SoWashCo Schools magnet programs for the 2023-24 school year must fill out an intra-district transfer form, which can be found at [sowashco.org/enroll#IDT](https://sowashco.org/enroll#IDT). Students will be admitted if space allows and eligibility requirements are met.

# Transportation

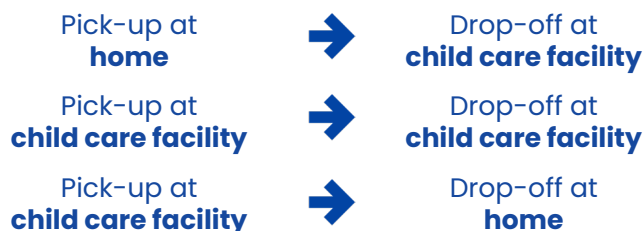
Our goal is to provide safe, reliable and efficient transportation to students who live in our school district. We work to ensure students arrive at school on time and ready to learn. We provide transportation to every K-12 student living within the transportation guidelines.

Grade	Transportation Services
K-5	School bus transportation is provided per transportation guidelines to elementary students who live <b>more than one mile</b> from their boundary school.
6-8	School bus transportation is provided per transportation guidelines to middle school students who live <b>more than one-and-a-half miles</b> from their boundary school.
9-12	School bus transportation is provided per transportation guidelines to high school students who live <b>more than two miles</b> from their boundary school.
Magnet and Gateway Programs	School bus transportation is provided per transportation guidelines to students living <b>more than one mile</b> from Nuevas Fronteras Spanish Immersion or Valley Crossing Elementary Schools.

\*Information is subject to change

## Child Care Transportation

Students who will be in grades K-5 are eligible to be considered for an alternate bus stop for child care purposes. The licensed child care provider must be located in the same boundary school attendance area where the child is enrolled. **The pick-up and drop-off locations must be the same location each morning and afternoon.**



**Please Note:** Transportation boundaries are subject to change. Open enrolled and intra-district transfer students (students attending a school other than their boundary school) whose parent/guardian has signed a waiver of transportation are not eligible for transportation services regardless of the distance. Learn more at [sowashco.org/transportation](https://sowashco.org/transportation).



# Before and After School Programs, Athletics and Activities

## Elementary

Sports and activities are managed through Community Education. Intramurals are for students in grades 2-5 and typically meet twice a week for one hour after school. To find activities for your child to participate in please visit [commed.sowashco.org/athletics](http://commed.sowashco.org/athletics).

## Middle School

Sports and activities are managed through Community Education. Students in grades 6-8 have an opportunity to participate in a variety of seasonal sports and activities. To find activities for your child to participate in please visit [commed.sowashco.org/athletics](http://commed.sowashco.org/athletics).

## High School Sports and Activities

SoWashCo Schools provides opportunities for students in grades 9-12 to pursue special interests that contribute to their physical, mental and emotional health. For more information about sports and activities available, visit the athletics and activities page on your high school's website.

## Adapted Athletics

SoWashCo Schools believes every student should have the opportunity to be involved in athletics. The Thunderbolts adapted athletics program is a co-ed team providing opportunities for students in grades 7-12 with various abilities to participate in a team sport and compete against other teams from around the state.

**Soccer (Fall) | Floor Hockey (Winter) | Baseball/Softball (Spring)**

Each sport is designed to accommodate all levels of play and ability. To learn more or to sign up, please contact your school's athletic director.

## Athletic and Activities Contacts

<b>East Ridge High School</b>	<b>Sara Palodichuk</b> Athletic Director	651-425-2348	<a href="mailto:spalodic@sowashco.org">spalodic@sowashco.org</a>
<b>Park High School</b>	<b>Philip Kuemmel</b> Athletic Director	651-425-3758	<a href="mailto:pkuemmel@sowashco.org">pkuemmel@sowashco.org</a>
<b>Woodbury High School</b>	<b>Jodi Loeblein-Lecker</b> Athletic Director	651-425-4421	<a href="mailto:jloeblei@sowashco.org">jloeblei@sowashco.org</a>
<b>Community Education</b> (Elementary and Middle School)	<b>Todd Feustel</b> Youth Athletics Coordinator	651-425-6606	<a href="mailto:tfeustel@sowashco.org">tfeustel@sowashco.org</a>



Middle and High school students must have a current sports physical on record in order to register for any athletic activity. **Sports physicals are valid for three years.**

Forms can be found at [sowashco.org/health](http://sowashco.org/health)

# Before and After School Programs

## Kids Club

Kids Club is a fee-based child care program that supports learning and development before and/or after school, on non-school days and during the summer. The program is open to elementary students in grades K-5 at their school.

### School Year

**6:30 a.m.-6 p.m.**

- Before and/or after school scheduling.
- Locations are available at all elementary schools.
- Full-time (5-days a week) or part-time (1-4 days a week) scheduling before and/or after school.
- Drop-in attendance option available.
- Care on non-school days is available to current Kids Club participants at limited locations. Registration is required for non-school days.

### Summer

**6:30 a.m.-6 p.m.**

- Full-day and half-day schedules.
- Students must have completed their first year of kindergarten to attend.
- Students can attend until the summer following the completion of grade 5.

## Kids Club Online Registration

**2023-24 School Year Registration Window:**

9 a.m. Monday, April 24, 2023

**Summer 2023 Registration Window:**

9 a.m. Wednesday, Feb. 1, 2023

## Contact Us



[sowashco.org/kidsclub](https://sowashco.org/kidsclub)



651-425-6639



[KidsClub@sowashco.org](mailto:KidsClub@sowashco.org)



Like us on Facebook @SoWashCoCE



# Early Childhood Education

SoWashCo Schools Early Childhood Education programs are offered through Community Education. Our early learning programs offer engaging, enriching and personalized experiences for our earliest learners from birth to age 5.

**\*Times, prices and locations are subject to change for all early learning programs.**

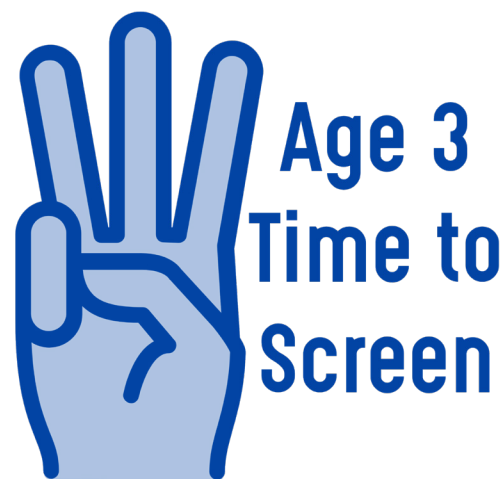
## Early Childhood Screening

Early Childhood Screening helps identify health and developmental needs of young children prior to kindergarten.

Screening is recommended at age three but must be completed before starting kindergarten in a Minnesota public school. Screening is also required prior to enrolling in SoWashCo Schools Pre-kindergarten programs. Screening is free and takes approximately 45 minutes. A parent or legal guardian stays with the child during the screening process.

During screening a trained professional will check:

- Cognitive development
- Vision
- Hearing
- Growth
- Health history
- Immunization history



If your child has not yet been screened and is between the ages of 3 and 5, please call 651-425-6175 to schedule an appointment or learn more at [sowashco.org/screening](https://sowashco.org/screening).

## Preschool

Preschool provides foundational learning opportunities for children who are age 3 or 4 on or before Sept. 1. Preschool supports a child's social-emotional growth while also increasing skills in language, literacy, math and physical development for future success. Preschool offers a supportive environment where children can also create important social connections with their peers. Learn more at [sowashco.org/preschool](https://sowashco.org/preschool).

### Preschool Child Only (3 years old)

Children gain important skills such as learning to follow routines and rules, literacy through introductory reading and writing, math and number sense, science, art and music. Children also create social connections with their peers. Parents can participate through conferences, program events and volunteer opportunities.

### Preschool Multiage (3-5 years old)

Children enrolled in the multiage class learn and make connections with students older and younger than they are and create cooperative learning skills. Students are taught introductory skills such as reading, writing, math, science, art and music. This program provides flexibility through two-day and three-day class options.





# Early Childhood Education

## Pre-kindergarten

The Pre-kindergarten (Pre-K) program is for 4 year olds one year prior to starting kindergarten. Children must be age 4 on or before Sept. 1. The program is located at both elementary school sites and our Early Learning Program Centers and offers programming five days a week at a variety of times. Parents are responsible for their child's transportation to and from school. Transportation is provided for students attending Newport Elementary and students who require special education services within transportation guidelines. There is an \$85 application fee due at the time of enrollment. Families can register for Pre-K at [sowashco.org/enroll](http://sowashco.org/enroll).

### Pre-K is offered at the following schools and Early Learning Program Centers

- Armstrong Elementary
- Bailey Elementary
- Cottage Grove Elementary
- Crestview Elementary
- Hillside Elementary
- Newport Elementary  
(Child must live within the Newport Elementary boundary)
- Pine Hill Elementary
- Pullman Elementary
- Royal Oaks Elementary
- Valley Crossing Elementary
- Woodbury Elementary
- Liberty Ridge Site II Early Learning Center
- District Program Center

**\*Program sites and availability are subject to change.**

## Preschool and Pre-K Registration Fees and Financial Assistance

**A one-time, non-refundable registration fee of \$85 is due at the time of enrollment.**

Financial assistance is available for families that meet certain state eligibility requirements. Families may be required to provide proof of income. Those that qualify for assistance will also be required to complete a State Pathways Scholarship application. Limited district scholarships are available.



## Early Childhood Family Education

Early Childhood Family Education (ECFE) is an educational program for families with children from birth to 5 years old. ECFE helps parents support their child's growth and development. Classes are taught by licensed early childhood teachers and licensed parent educators. Visit [sowashco.org/ecfe](http://sowashco.org/ecfe) to learn more about classes, costs, times and locations or to register.



## Early Childhood Special Education

Early Childhood Special Education (ECSE) provides programs and services for young children with disabilities from birth to age 5. Services are provided for children from birth to 2 years old in a home setting. Children age 3 to 5 are provided services in a preschool designed to meet their educational needs. A referral to early intervention services can be made through: Amy Whinnery | 651-425-6134.

To learn more, visit [sowashco.org/ecse](http://sowashco.org/ecse).



# Special Education

SoWashCo Schools provides a comprehensive program for students with unique learning needs. We offer a continuum of services to address student needs in the areas of academics, social and emotional wellbeing, behavior, nursing, communication and assistive technology.

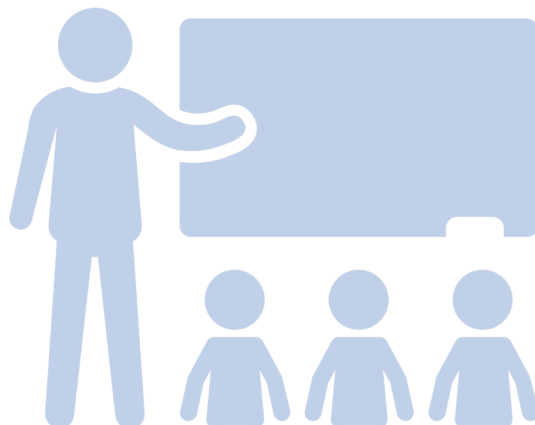
## Terms to Know

<b>ABC</b>	Academic Behavior Communication	<b>EBD</b>	Emotional Behavior Disorder
<b>ASD</b>	Autism Spectrum Disorder	<b>ECSE</b>	Early Childhood Special Education
<b>DCD</b>	Developmental Cognitive Disability	<b>Resource</b>	Specialized Supplementary Instruction

## Program Availability at Elementary Schools

School	ABC	ASD	DCD	EBD	ECSE	Resource
Armstrong Elementary School		•	•		•	•
Bailey Elementary School	•				•	•
Cottage Grove Elementary School		•	•		•	•
Crestview Elementary School	•	•		•	•	•
Grey Cloud Elementary School		•				•
Hillside Elementary School					•	•
Liberty Ridge Elementary School <small>*ECSE located at LRES Site II</small>		•			•	•
Middleton Elementary School			•			•
Newport Elementary School	•	•	•	•	•	•
Pine Hill Elementary School	•				•	•
Pullman Elementary School	•				•	•
Red Rock Elementary School		•				•
Royal Oaks Elementary School		•				•
Valley Crossing Elementary School	•			•	•	•
Woodbury Elementary School	•		•	•	•	•

**\*Program sites and availability is subject to change**



# Special Education



## Program Availability at Middle Schools

School	ABC	ASD	DCD	EBD	Resource
Cottage Grove Middle School	•	•	•	•	•
Lake Middle School	•	•	•		•
Oltman Middle School	•		•	•	•
Woodbury Middle School	•		•		•

\*Program sites and availability is subject to change

## Program Availability at High Schools

School	ABC	ASD	DCD	EBD	Resource
East Ridge High School	•	•	•	•	•
Park High School	•		•	•	•
Woodbury High School	•		•	•	•

\*Program sites and availability is subject to change

## Other Services Available for Young Adult Learners

### Next Step

The Next Step transition program offered by SoWashCo Schools provides transition services to students aged 18–21 who have a current Individualized Education Plan (IEP) and have not yet earned their high school diploma due to continued special education goals. The Next Step transition program comprises two student cohorts, Next Step and Pathways, both focusing on post-secondary education and training, employment and independent living skills. Learn more at [nextstep.sowashco.org](https://nextstep.sowashco.org).

### Next Step Pathways

Next Step Pathways serves special education high school students and Next Step students. The vocational assessment lab focuses on building skills in the areas of career development, skills training and lifelong learning activities. Learn more at [nextstep.sowashco.org](https://nextstep.sowashco.org)





# Student Support Services

## English Language Learner Program

SoWashCo Schools provides English language learner services for students whose home language is not English.

- During the enrollment process, SoWashCo Schools will ask information about a student and family's language background.
- Families that identify a home language other than English will have their child screened to determine if they qualify for English language services.
- English language coordinators will reach out to families to schedule screenings for students before the upcoming school year.

Learn more at [sowashco.org/englishlearners](https://sowashco.org/englishlearners)

SoWashCo Schools ofrece servicios de aprendizaje de Inglés para todos los estudiantes cuya primera lengua no es el Inglés. Para obtener mayor información, por favor visite: [sowashco.org/el-es](https://sowashco.org/el-es).

SoWashCo Schools cung cấp dịch vụ học tiếng Anh cho sinh viên có ngôn ngữ mẹ đẻ không phải là tiếng Anh. Để biết thêm thông tin, hãy truy cập [sowashco.org/el-vi](https://sowashco.org/el-vi)

SoWashCo Schools 家庭语言不是英语的学生提供英语语言学习者服务。欲了解更多信息, 参 [sowashco.org/el-zh](https://sowashco.org/el-zh)

SoWashCo Schools muab kev pab los ntawm English Language Learner services rau cov tub ntxhais twg tsis hais lus Askiv hauv vaj hauv tsev. Yog xav paub ntxiv, mus saib [sowashco.org/el-hm](https://sowashco.org/el-hm)

Iskuullada SoWashCo waxay bixiyaan adeegyada barashada luuqada Ingiriisiga ardayda aan afkooda hooyo ahayn Ingiriiska. Wixii macluumaad oo dheeraad ah, booqo [sowashco.org/el-so](https://sowashco.org/el-so)

## Cultural Liaisons

Students and families can connect with Cultural Liaisons for:

- Leadership opportunities
- Check-ins and connections
- Multicultural events and opportunities
- Learn more about their culture

Learn more at [sowashco.org/familyengagement](https://sowashco.org/familyengagement)

## Counseling Services

SoWashCo School counselors work with students, families, teachers and administrators to support students with their academic concerns, goals, career and college planning and social-emotional development. Counselors and school psychologists work with students individually or at times, in groups and in the classroom.

## Elementary School

Most SoWashCo elementary schools have a psychologist on staff to assist students in need of services. Additionally, cultural liaisons can be available for elementary students and families upon request.

## Middle and High Schools

Students and families can contact school counselors for assistance with:

- Academic planning and support
- Family support
- Mental health support
- Friends and peers
- Home and family
- Housing and resources
- Substance abuse
- Schedule and registration questions

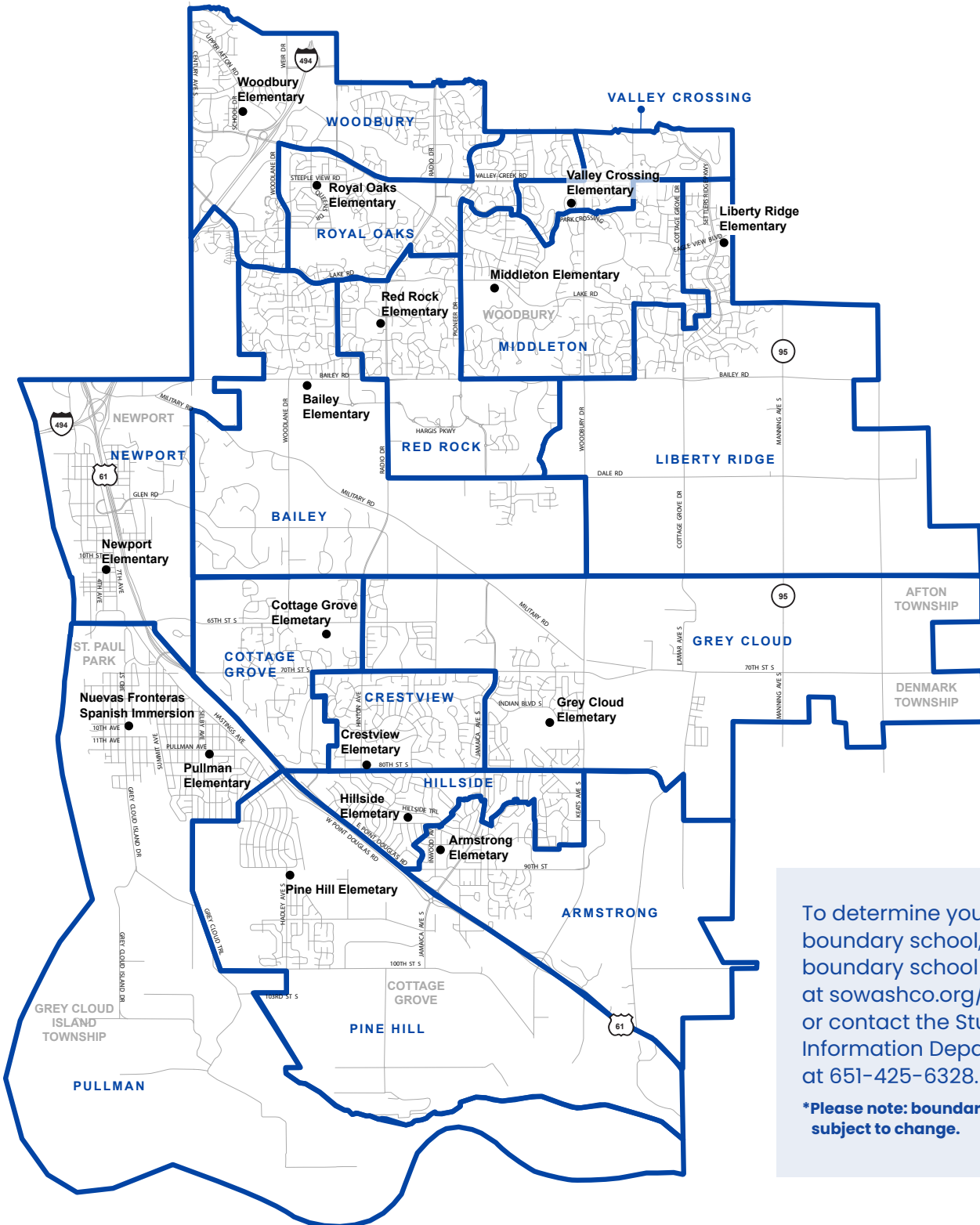
## Technology

Every student receives their own assigned device (Chromebook or iPad) to use during the school year. Devices and other digital tools provide learners with opportunities to create, think critically, solve problems, communicate and collaborate.



# Elementary Schools

SoWashCo Schools has 16 elementary schools serving students in grades Pre-K through fifth grade. During their first years in school, students will meet new friends, learn routines, develop problem-solving skills and build a foundation for success in future learning.



To determine your child's boundary school, use our boundary school calculator at [sowashco.org/enroll](https://sowashco.org/enroll) or contact the Student Information Department at 651-425-6328.

**\*Please note: boundaries are subject to change.**

# Elementary Schools



## Armstrong Elementary School (PreK-5)

8855 Inwood Ave. S. Cottage Grove, MN 55016 | [aes.sowashco.org](http://aes.sowashco.org) | 651-425-4100

- In third through fifth grades, students are taught Advancement Via Individual Determination (AVID) strategies to help them stay organized and gain study skills to be successful with school.
- Students can stay involved with their classmates through our student council, yearbook club and as student ambassadors.
- Students are offered opportunities in choir and competitive sports activities throughout the school year.
- Teachers personalize learning for each student through relationships and technology (iPads K-2, Chromebooks 3-5).
- Armstrong recently celebrated its 50th Anniversary with staff, students and alumni.
- There is an active Parent Teacher Organization (PTO) and several community-building events throughout the year.

Pre-K	Start Time / End Time	Kids Club
•	8:40 a.m.-3:10 p.m.	•

## Bailey Elementary School (PreK-5)

4125 Woodlane Dr. Woodbury, MN 55129 | [bes.sowashco.org](http://bes.sowashco.org) | 651-425-4800

- Bailey Elementary students are taught to always submit their best work through setting and achieving academic goals.
- Updated facilities include classroom microphones, flexible seating options in the classroom, an outdoor learning space, an additional playground for younger students and adaptive swings that can be used by students of all abilities.
- Students needing additional support with literacy can participate in Reading Corp, our literacy intervention group led by Bailey Elementary Reading Specialists.
- Students can connect with their classmates through choir, Passport Club, student council and as student ambassadors.
- Students are encouraged to learn outside of the classroom through a yearly STEM (science, technology, engineering and math) fair to showcase independent student projects, a World Cultures Week and a Battle of the Books event.
- Families can get involved with an active Parent Teacher Association (PTA).

Pre-K	Start Time / End Time	Kids Club
•	9:20 a.m.-3:50 p.m.	•

## Cottage Grove Elementary School (PreK-5)

7447 65th Street S. Cottage Grove, MN 55016 | [cges.sowashco.org](http://cges.sowashco.org) | 651-425-5800

- A fully inclusive and accessible playground provides every student with the opportunity to play together.
- Each month, a student in every classroom is recognized for being a great school community member with their photos displayed in the commons area.
- Students can engage with their peers outside of the classroom in student council, student ambassadors and Boys and Books Club.
- Staff, students and parents are committed to collaborating to ensure each person feels valued, respected and has a sense of belonging.
- Cottage Grove Elementary offers special education center-based programs for children with autism spectrum disorder (ASD) and developmental cognitive disabilities (DSD).
- There is an active Parent Teacher Organization (PTO) that helps host multiple community-building events throughout each school year.

Pre-K	Start Time / End Time	Kids Club
•	8:40 a.m.-3:10 p.m.	•



# Elementary Schools

## Crestview Elementary School (PreK–5)

7830 80th Street S. Cottage Grove, MN 55016 | [ces.sowashco.org](http://ces.sowashco.org) | 651-425-3800

- Classrooms are equipped with technology to help meet the unique needs of each student through individual devices, smartboards, classroom microphones and devices for students who are hard of hearing.
- Students are offered opportunities in choir and competitive activities such as word master, geography bee and math league.
- Students learn through a variety of unique programs such as mindful movement, be the boss of your stress and the forest restoration project.
- Support is offered outside of school hours through extended day learning for a portion of the year, tutoring and summer home visits when available.
- Crestview offers the Young Scholars program which focuses on offering opportunities to high achieving students who may not otherwise have the exposure or opportunity. Learn more about Young Scholars on page 29.
- Each month students host Cardinal Jam, an all-school meeting to recognize students who demonstrate growth and leadership.
- The Crestview Elementary Parent Teacher Association (PTA) assists with a variety of events throughout the year including family nights, school dances, discovery day and more.

Pre-K	Start Time / End Time	Kids Club
•	7:55 a.m.–2:25 p.m.	•

## Grey Cloud Elementary School (PreK–5)

9525 Indian Blvd. S. Cottage Grove, MN 55016 | [gces.sowashco.org](http://gces.sowashco.org) | 651-425-4200

- Grey Cloud Elementary earned the honor of being a Blue Ribbon school in 2020 from the U.S. Department of Education for educational excellence and progress in closing the achievement gap.
- Students can connect with their classmates through choir, cribbage and chess club, theatre group, student council, student ambassadors and by being a crossing guard.
- Students participate in a monthly schoolwide theme to encourage learning and emotional growth including unity month, kindness month, grit and goals month, reading month and more. We end the year with the “Celebration of Learning” event.
- Grey Cloud elementary has an outdoor classroom and participates in the prairie restoration project with South Washington Watershed District.
- Grey Cloud shares a campus with Cottage Grove Middle School and connects to Kingston Park by a variety of trails.
- There is a center-based program for students with high communication and sensory needs.
- Families can join the active Parent Teacher Association (PTA) to help organize community events for Grey Cloud Elementary.

Pre-K	Start Time / End Time	Kids Club
•	8:40 a.m.–3:10 p.m.	•

# Elementary Schools



## Hillside Elementary School (PreK-5)

8177 Hillside Trail S. Cottage Grove, MN 55016 | [hes.sowashco.org](https://hes.sowashco.org) | 651-425-4000

- Students enjoy new playground features, a large outdoor campus and individualized technology in the classroom to meet unique educational needs.
- Hillside uses the HAWKS system which centers around being helpful, having a positive attitude, working hard, kindness and being safe.
- There is a strong focus on the social-emotional learning of each student through skill development and the implementation of mindful movement.
- Hillside offers the Young Scholars program which focuses on offering opportunities to high achieving students who may not otherwise have the exposure or opportunity. Learn more about Young Scholars on page 29.
- An Academic Success Coach is available for students in grades 3-5 to help support their academic needs.
- Students have the opportunity to bond with other students outside of the classroom in choir, youth advisory council, student council and student ambassadors.
- There is a welcoming Parent Teacher Organization (PTO) that helps host multiple community-building events throughout each school year.

Pre-K	Start Time / End Time	Kids Club
•	8:40 a.m.-3:10 p.m.	•

## Liberty Ridge Elementary School (PreK-5)

11395 Eagle View Blvd. Woodbury, MN 55129 | [lres.sowashco.org](https://lres.sowashco.org) | 651-425-5900

- Updated indoor classroom facilities and outdoor playground equipment allow students to grow academically, socially and physically.
- Teachers provide personalized learning opportunities in the classroom through technology and face-to-face individual support.
- Students can connect with classmates in a variety of activities outside of the classroom including choir, student council, math masters, battle of the books and Percussion Club.
- Liberty Ridge hosts a variety of events for students and families, including reading month, a fun run, family fall picnic and more.
- Classrooms are located in grade-level pods throughout the school, where classes can collaborate, connect and learn together.
- Families can join a supportive Parent Teacher Association (PTA) which regularly coordinates, volunteers and plans events to encourage a strong school community.

Pre-K	Start Time / End Time	Kids Club
•	9:20 a.m.-3:50 p.m.	•



# Elementary Schools

## Middleton Elementary School (PreK-5)

9105 Lake Rd. Woodbury, MN 55125 | mes.sowashco.org | 651-425-4900

- Updated facilities at Middleton Elementary include classroom microphones, flexible seating options in the Middleton Elementary will have a new GaGa ball ring and little free library available to students in Spring 2023.
- Classrooms feature a microphone and flexible seating options to meet the variety of needs of students. Middleton also has an outdoor classroom and the Mustang Meadow calming collaboration space.
- Students are encouraged to learn outside of the classroom through school events like Middleton World Cultures Week, art shows and science fairs.
- Middleton encourages a positive learning environment by recognizing students each school day who have exemplified kind actions or have shown growth.
- Students can engage in extracurricular activities such as choir, student council, student ambassadors, youth advisory council, after school math opportunities and an after school visiting theater partnership.
- There is a welcoming Parent Teacher Organization (PTO) that plans fun, annual events including the Middleton fall festival.

Pre-K	Start Time / End Time	Kids Club
•	8:40 a.m.-3:10 p.m.	•

## Newport Elementary School (PreK-5)

651 6th Ave. Newport, MN 55055 | nes.sowashco.org | 651-425-4300

- Newport is a Title I school that provides additional educational opportunities and resources to support student growth in grades K-2.
- Students can connect with classmates through choir, student council, student ambassadors and youth advisory council.
- Monthly schoolwide meetings are held to celebrate successes and encourage learning and emotional development.
- Newport has been recognized as a "Beat the Odds" school by the Star Tribune in 2020, 2019 and 2018 for high academic performance in reading and math.
- Families can join an active Parent Teacher Organization (PTO) that supports students, staff and the school community.

Pre-K	Start Time / End Time	Kids Club
•	7:55 a.m.-2:25 p.m.	•

## Nuevas Fronteras Spanish Immersion (K-5)

1020 Third Street St. Paul Park, MN 55071 | nfsi.sowashco.org | 651-425-3100

- Nuevas Fronteras Spanish Immersion (NFSI) is a districtwide magnet school for K-5 Spanish immersion where students are fully immersed in the Spanish language with staff representing five Spanish speaking countries and helping to promote Latino culture. Learn more about how to apply on page 6.
- NFSI has a newly redesigned playground, football and baseball fields and a running track for outdoor learning experiences.
- There are flexible learning spaces to encourage collaboration and a comprehensive media center to support learning in Spanish and English.
- Students can connect outside of the classroom through student council, student advisory council, district ambassadors, Girls on the Run, Chess Club, Color Me Beautiful/Boys to Young Men and choir.
- There is a supportive Parent Teacher Student Organization (PTSO) that plans community-building events throughout the year.

Spanish Immersion Pathway: Nuevas Fronteras > Woodbury Middle > Woodbury High School

Pre-K	Start Time / End Time	Kids Club
Not Available	9:20 a.m.-3:50 p.m.	•

# Elementary Schools



## Pine Hill Elementary School (PreK-5)

9015 Hadley Ave. S. Cottage Grove, MN 55016 | phes.sowashco.org | 651-425-3900

- There are a variety of services offered to support student growth including reading and math specialists, academic success coaches and talent development programs.
- Pine Hill students, staff and parents all have opportunities to learn and practice conscious discipline, which builds a foundation of safety and increases students' abilities to problem solve and learn at high levels.
- Students can connect with classmates in activities outside of the classroom including choir, music club, Color Me Beautiful, chess club, student council, student advisory council and youth advisory council.
- Schoolwide meetings are held throughout the year to celebrate students and focus on a development skill.
- Teachers personalize learning for each student through relationships and technology (iPads K-2, Chromebooks 3-5).
- Pine Hill has an active Parent Teacher Association (PTA) that supports field trips, family nights and more throughout the year.

Pre-K	Start Time / End Time	Kids Club
•	8:40 a.m.-3:10 p.m.	•

## Pullman Elementary School (PreK-5)

1260 Selby Ave. St. Paul Park, MN 55071 | pes.sowashco.org | 651-425-3600

- Pullman is a Title I school which services students in grades K-2 during the day with extra academic support in literacy and math. Before and after school tutoring is also available to students needing extra support.
- Students are encouraged to learn outside of the classroom through a yearly global arts festival that showcases each student's cultural heritage and a fall family dinner night that is open to the whole community.
- Students are provided with technology to help meet their unique needs through individual devices (iPads K-2, Chromebooks 3-5).
- Teachers provide personalized learning opportunities in the classroom through technology and face-to-face individual support.
- Students can connect with classmates through choir, Lego Club, AVID Club, student council, student ambassadors and youth advisory council.
- There is a welcoming Parent Teacher Organization (PTO) that meets monthly and plans events for the school community.

Pre-K	Start Time / End Time	Kids Club
•	8:40 a.m.-3:10 p.m.	•

## Red Rock Elementary School (PreK-5)

3311 Commonwealth Ave. Woodbury, MN 55125 | rres.sowashco.org | 651-425-5600

- Every classroom is equipped with flexible seating and audio enhancement technology that projects the teachers voice and serves as a security system allowing teachers to notify the front office of any concerns.
- Red Rock focuses on the social-emotional learning of each student through skill development, the implementation of mindful movement and providing calming spaces.
- Students that need additional support with reading can participate in the reading intervention program.
- Red Rock hosts an annual World Culture Week where students teach each other about their culture and heritage.
- Teachers provide personalized learning opportunities in the classroom through technology and individual support.
- Students can connect with classmates in a variety of activities outside of the classroom including choir, Kindness Club, student council, student advisory council, and the district advisory council.
- Families can join an active Parent Teacher Organization (PTO) to help plan community-building events throughout the year.

Pre-K	Start Time / End Time	Kids Club
•	7:55 a.m.-2:25 p.m.	•



# Elementary Schools

## Royal Oaks Elementary School (PreK–5)

7335 Steepleview Rd. Woodbury, MN 55125 | roes.sowashco.org | 651-425-4700

- Updated facilities at Royal Oaks include smartboards, a zen den and a motor room for students to focus on mindfulness and self regulation (the ability to manage their energy, emotions, thoughts and behaviors).
- Students start each day by focusing on social and emotional learning and building a positive environment for growth.
- Students can connect outside of the classroom through student council, student advisory council, district ambassadors, safety patrol, Girls On The Run and choir.
- Students vote on a theme for schoolwide celebrations that are held each month.
- Royal Oaks has a welcoming Parent Teacher Association (PTA) that supports the school community.

Pre-K	Start Time / End Time	Kids Club
•	7:55 a.m.–2:25 p.m.	•

## Valley Crossing Elementary School (PreK–5)

9900 Park Crossing, Woodbury, MN 55125 | vces.sowashco.org | 651-425-7500

- Valley Crossing is a district magnet school for multiage classrooms that allows students to develop relationships with the same team of teachers and classmates over a two-year period. Learn more about how to apply on page 6.
- Valley Crossing is a Responsive Classroom school, and we believe that social-emotional learning is just as important as academic learning.
- Classrooms feature adjustable walls to allow for flexible grouping and collaborative work spaces.
- Older students “Buddy Up” with a younger student to collaborate and support one another throughout the school year.
- Students can connect with classmates in activities outside of the classroom including choir, Valley News Network, battle of the books, spelling bee, student council, student advisory council and youth advisory council.
- Classrooms are located in neighborhood pods throughout the school, where classes can collaborate, connect and learn together.
- Valley Crossing hosts the Gateway program, which serves students in an all-gifted peer environment using curriculum with increased depth, complexity and pacing as the primary lens for designing instruction. Learn more about the program and the identification process on page 29.
- Families can join an active Parent Teacher Association (PTA) that coordinates community-building events throughout the year.

Pre-K	Start Time / End Time	Kids Club
•	9:15 a.m.–3:45 p.m.	•

## Woodbury Elementary School (PreK–5)

1251 School Dr. Woodbury, MN 55125 | wes.sowashco.org | 651-425-4600

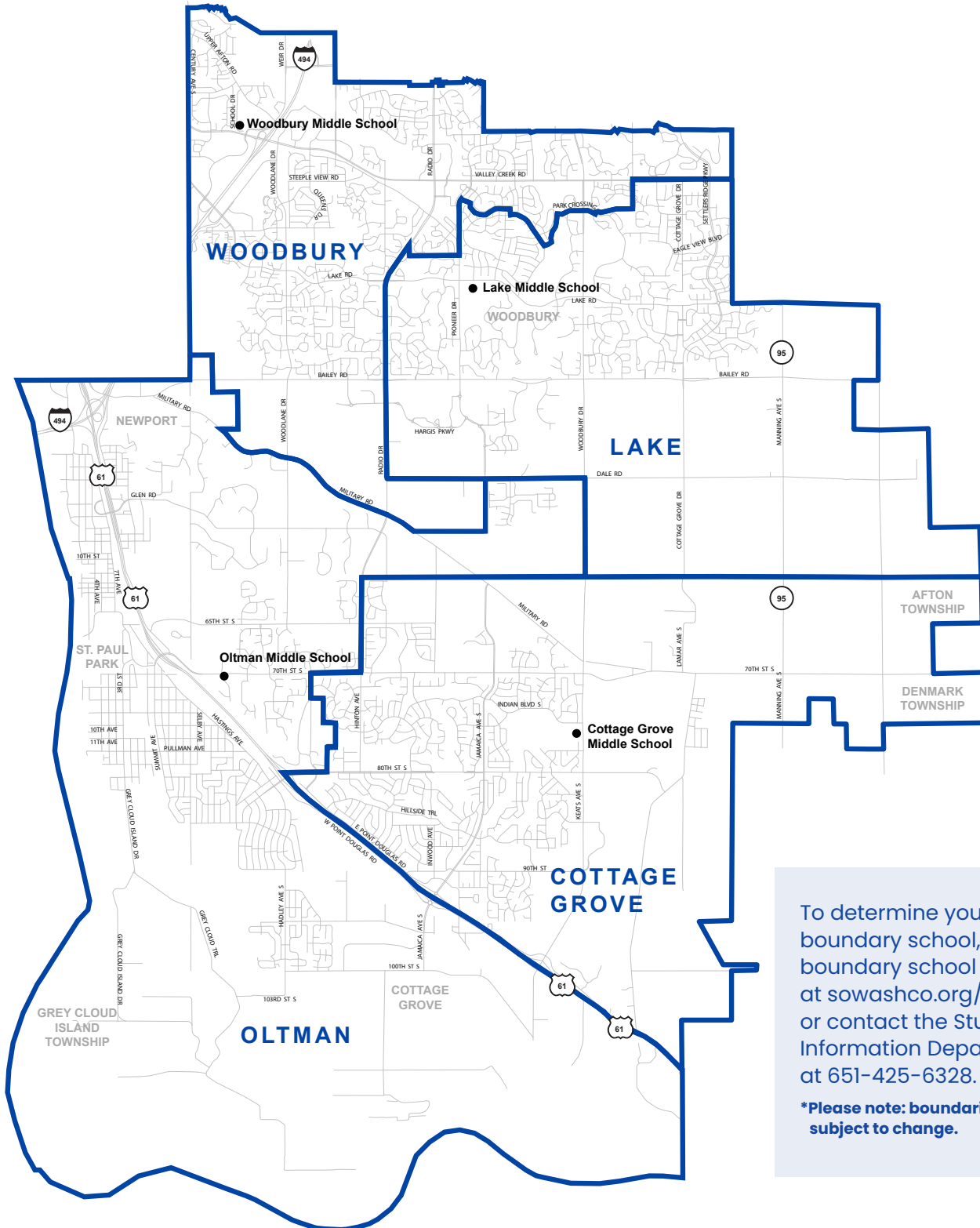
- Woodbury Elementary provides students with hands-on learning opportunities including learning how to code applications and robots.
- Updated facilities include a maker space for students to practice artistic creativity and problem solving during the school day.
- Students can socialize through school programs including choir, math masters, student council and student ambassadors.
- Teachers provide personalized learning opportunities in the classroom through technology and face-to-face individual support.
- There is a welcoming Parent Teacher Organization (PTO) that provides support for the school community.

Pre-K	Start Time / End Time	Kids Club
•	8:40 a.m.–3:10 p.m.	•

# Middle Schools



SoWashCo Schools has four middle schools serving students in grades six through eight. Middle School students will build on the educational foundations of elementary school to help prepare them for high school and beyond. Students will learn independence, time management, problem-solving, critical thinking and decision-making skills.



To determine your child's boundary school, use our boundary school calculator at [sowashco.org/enroll](https://sowashco.org/enroll) or contact the Student Information Department at 651-425-6328.

**\*Please note: boundaries are subject to change.**

# Middle Schools

## Cottage Grove Middle School (6-8)

9775 Indian Blvd. S. Cottage Grove, MN 55016 | [cgms.sowashco.org](http://cgms.sowashco.org) | 651-425-6800

- Once a month, Cottage Grove Middle School (CGMS) recognizes students who have been nominated for best representing our four core values of respect, integrity, commitment and compassion.
- CGMS has a technology lab for STEM (science, technology, engineering and math) classes for students to have hands-on experiences and science lab stations allowing for more interactive learning.
- Students that need additional support can participate in our after school academics program.
- Students in grade 8 can take Spanish with the opportunity to earn high school credits.
- CGMS has 15 clubs and activities including: One-Act Play, fall and spring musical, speech team, math team, student council, Yearbook Club, Environmental Club, Gay-Straight Alliance (GSA) Club, Upstanders (Anti-Bullying Group), WEB (Where Everyone Belongs) and Running Club.
- Our counseling team creates weekly social-emotional lessons designed to help students develop skills and build confidence.

Start Time / End Time	Indigenous/World Languages
7:50 a.m.-2:26 p.m.	Spanish (Grade 8 Only)

## Lake Middle School (6-8)

3133 Pioneer Dr. Woodbury, MN 55125 | [lms.sowashco.org](http://lms.sowashco.org) | 651-425-6400

- Lake Middle School (LMS) earned the honor of being a Blue Ribbon school in 2022 from the U.S. Department of Education for educational excellence and progress in closing the achievement gap.
- LMS has three full size gymnasiums, a swimming pool, outdoor classroom and every indoor classroom is equipped with wireless microphones to help teachers amplify learning for students.
- Spanish is offered as an elective class.
- Students have an opportunity to participate in after-school theater, musical ensembles, debate, and robotics.
- Each month, select students are recognized as Lake Leaders of Excellence, which encourages Leadership, Academics, Kindness and Excellence.

Start Time / End Time	Indigenous/World Languages
7:50 a.m.-2:26 p.m.	Spanish (Grade 8 Only)



# Middle Schools



## Oltman Middle School (6-8)

6625 Goodview Ave. S. Cottage Grove, MN 55016 | [oms.sowashco.org](https://oms.sowashco.org) | 651-425-3500

- Oltman Middle School (OMS) offers collaborative learning spaces with comfortable seating, technology bars, mobile classroom furniture and enhanced security systems.
- Students can register for advanced math and Spanish courses that can count toward high school credit.
- After school, students can participate in theater, Jazz Band, Chamber Orchestra, Art Club, Anime Club, Movie Critics Club, Newspaper Club, Chess Club and Student Council.
- OMS has a state of the art, fully accessible pool and a diving well.
- OMS is recognized nationally as an AVID (Advancement Via Individual Determination) National Demonstration School and AVID Schoolwide Site of Distinction. We also have two staff members that are national staff developers for AVID and help train teachers across the country.
- OMS has an active Parent Teacher Organization (PTO) that helps support enrichment programs and activities, field trips, and student recognition programs.

Start Time / End Time	Indigenous/World Languages
7:50 a.m.-2:26 p.m.	Spanish (Grade 8 Only)

## Woodbury Middle School (6-8)

1425 School Dr. Woodbury, MN 55125 | [wms.sowashco.org](https://wms.sowashco.org) | 651-425-4500

- Woodbury Middle School (WMS) includes classroom microphones, flexible learning spaces, movable furniture and sliding glass doors to allow for collaborative learning.
- The state-of-the-art STEM (science, technology, engineering and math) Lab is equipped with 3D printers, a vinyl cutter, heat press and embroidery machines.
- WMS is designated as the Spanish immersion pathway for SoWashCo Schools.
- The counseling department helps coordinate peer homework helpers and the Check and Connect Program which support student learning and collaboration.
- Woodbury Middle School offers 20 clubs and activities including theatre, Wildcat News Crew, Student Council, music ensembles and Dodgeball.

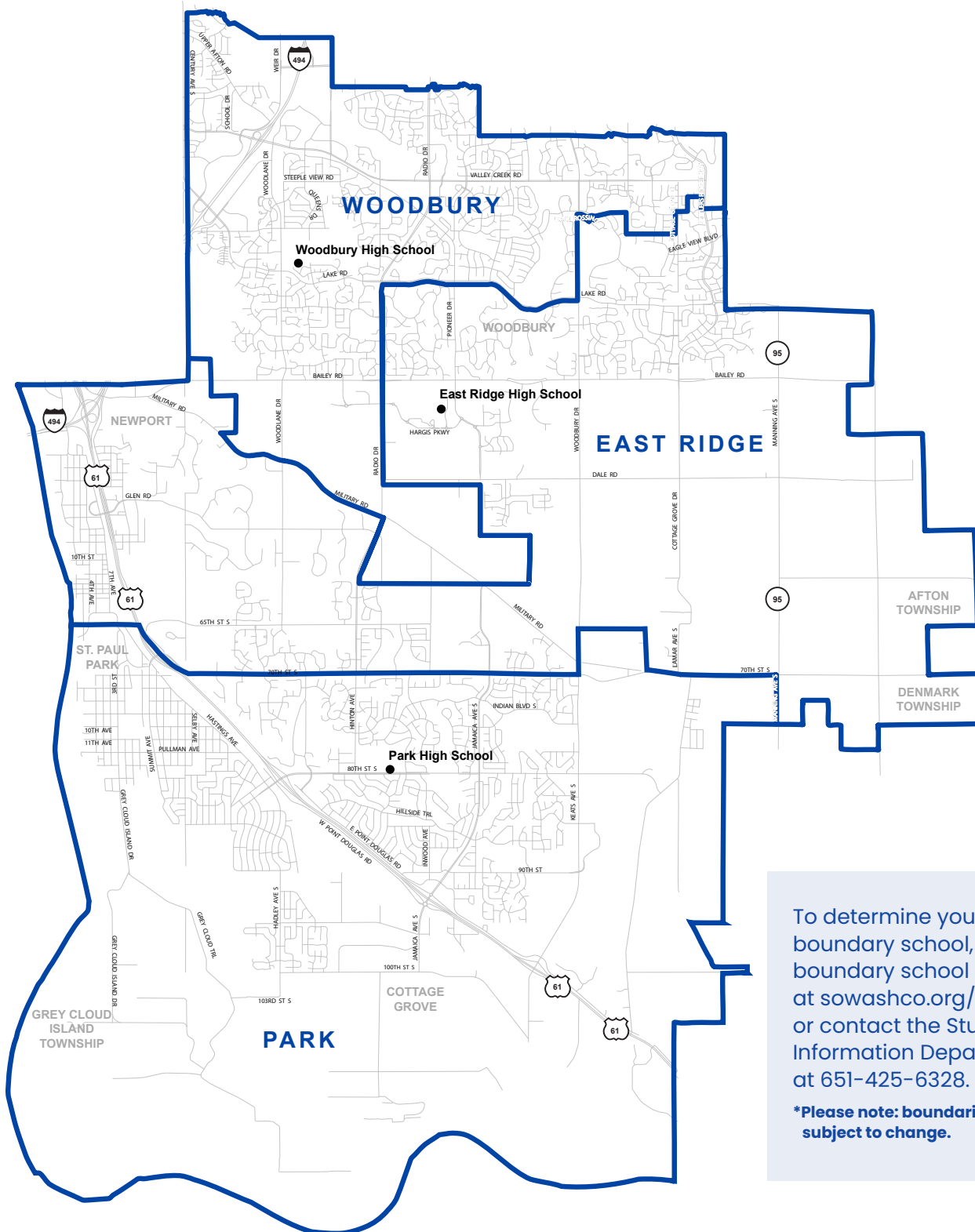
Start Time / End Time	Indigenous/World Languages
7:50 a.m.-2:26 p.m.	Spanish Immersion Pathway





# High School

SoWashCo Schools has three comprehensive high schools, an online high school and an alternative high school serving students in grades 9-12. Each school offers a variety of unique opportunities, classes and programs for students. High school students will continue to gain skills that will help them prepare and succeed in their lives after high school.



To determine your child's boundary school, use our boundary school calculator at [sowashco.org/enroll](https://sowashco.org/enroll) or contact the Student Information Department at 651-425-6328.

**\*Please note: boundaries are subject to change.**

# High Schools



## East Ridge High School (9–12)

4200 Pioneer Dr. Woodbury, MN 55129 | [erhs.sowashco.org](http://erhs.sowashco.org) | 651-425-2300

- East Ridge High School (ERHS) offers an Engineering and Computer Science Pathway for students interested in pursuing a STEM (science, technology, engineering and math) career with classroom spaces for robotics and woodworking, science labs for biomedical, biology, chemistry, physics and physical science, visual arts classrooms for theater, ceramics, painting and photography and a fully equipped consumer science kitchen.
- ERHS has multiple spaces that are tailored to serving special education students of all needs including the School Cafe vocational program.
- Students can participate in College in Schools (CIS) through the University of Minnesota, 916 Courses through Century College, Advanced Placement (AP) courses, Post Secondary Enrollment Options (PSEO) and Project Lead The Way (PLTW) Engineering and Biomedical Sciences Sequences.
- ERHS has several flexible learning classrooms to encourage collaborative and individual learning.
- The activity center has an indoor track, six wood floor courts and a strength and conditioning center.
- Students can join more than 80 clubs and activities including robotics, speech, debate, theater, varsity athletics, adapted athletics, National Honor Society, Asian American Club, Diversity Club and more.

Start Time / End Time	Indigenous / World Languages	
8:30 a.m.–3:06 p.m.	<ul style="list-style-type: none"> <li>• Spanish</li> <li>• French</li> </ul>	<ul style="list-style-type: none"> <li>• Mandarin Chinese</li> <li>• American Sign Language (ASL)</li> </ul>

## Park High School (9–12)

8040 80th Street S. Cottage Grove, MN 55016 | [phs.sowashco.org](http://phs.sowashco.org) | 651-425-3700

- Park High School (PHS) is an International Baccalaureate (IB) World School offering an academically challenging and balanced program that prepares high school students for success in college and in life.
- PHS was the first school in Minnesota to earn the AVID (Advancement Via Individual Determination) National School Distinction.
- In addition to IB courses, PHS also offers Post Secondary Enrollment Option (PSEO) and College in School (CIS) Advanced Placement (AP) courses and Concurrent Enrollment courses where students can earn college credit.
- PHS offers trade and industry programs where students have access to wood shop, small engines and metals labs.
- Students can get creative in 3D printing, laser cutting and other high tech options. There is also an inventor space that is supported by grants from 3M.
- PHS offers more than 50 clubs and activities including: affinity groups, Link Crew, National Honor Society, speech team, theater, yearbook and varsity athletics
- PHS has an expansive athletic facility that includes a climate-controlled activity center with four courts, an indoor second story track, wrestling gym, gymnastics center and a large weight room.

Start Time / End Time	Indigenous / World Languages	
8:30 a.m.–3:06 p.m.	<ul style="list-style-type: none"> <li>• Spanish and IB Spanish</li> <li>• French and IB French</li> </ul>	<ul style="list-style-type: none"> <li>• American Sign Language (ASL)</li> </ul>

# High Schools

## Woodbury High School (9-12)

2665 Woodlane Dr. Woodbury, MN 55125 | [whs.sowashco.org](http://whs.sowashco.org) | 651-425-4400

- Woodbury High School (WHS) offers the continuation of the Spanish Immersion pathway from Woodbury Middle School.
- WHS is the only school in the district that offers the Junior Reserves Officer Training Corps (JROTC) courses.
- WHS is proud to offer College in Schools (CIS), Advanced Placement (AP) courses, Concurrent Enrollment courses for college credits and Project Lead the Way (PLTW) Engineering.
- Students can register for an auto shop course and work on real vehicles.
- 3M tutors are available for students in math and science courses before school.
- WHS offers more than 50 clubs and more than 50 varsity sports and activities including a nationally recognized speech team, mock trial, musical ensembles, marching band, theatre, Black Student Union, Asian American Club, Hispanic/Latino Club, Muslim Student Association and more.
- WHS had two teachers, Tark Katzenmeyer and Kaarin Schumacher, named 2019 Teacher of the Year candidates, Joe Quintavle was named the Minnesota High School League Coaches Association's 2021 Coach of the Year, and three WHS alumni are currently signed to professional sports teams in Major League Baseball (MLB) and Major League Soccer (MLS).

Start Time / End Time	Indigenous / World Languages	
8:30 a.m.-3:06 p.m.	<ul style="list-style-type: none"><li>• Spanish</li><li>• French</li><li>• German</li></ul>	<ul style="list-style-type: none"><li>• Mandarin Chinese</li><li>• American Sign Language (ASL)</li></ul>



# Non-Traditional High Schools



SoWashCo Schools is proud to offer SoWashCo Online and South Washington Alternative High School for students in grades 9–12. The schools offer a non-traditional learning environment to fit students’ needs while still preparing them to become college and career ready.

## SoWashCo Online (9–12)

[online.sowashco.org](https://online.sowashco.org) | 651-425-7303

- SoWashCo Online provides students the flexibility to learn on their schedule in a location that best meets their needs.
- Students can join SoWashCo Online as a full-time student, or part-time as an addition to their in-person classes at school.
- Courses offered include honors courses and Advanced Placement (AP) for potential college credit.
- Throughout the course, students will have the opportunity for one-on-one and/or small group support.
- Highly personalized learning pathway that helps students manage their time while providing structure to keep students motivated, engaged, and on track to complete coursework.

Start Time / End Time	Indigenous / World Languages
Varies	Mandarin Chinese

## South Washington Alternative High School (9–12)

8400 E. Point Douglas Rd. S. Cottage Grove, MN 55016 | [swahs.sowashco.org](https://swahs.sowashco.org) | 651-425-7000

- South Washington Alternative High School (SWAHS) offers flexible learning to meet the needs of students where a traditional high school may not be a good fit.
- The Work Experience Program provides elective credits for student working outside of the school day in addition to their regular class schedule
- The Achievement Lab allows students to work in a hybrid setting where they attend school in-person twice a week to get individualized support and participate in e-learning the other three days of the week.
- 3D printers are available to students to explore engineering and programming. Innovative technology is incorporated into our art classroom to provide students with the opportunity to explore different skills.
- SWAHS offers college courses through Century College where students can earn college credit while working toward high school graduation.
- SWAHS connects students to post secondary institution options, training programs and employment opportunities.
- Students can participate in various clubs such as, art club, Gay Straight Alliance, Black Student Union and multimedia club. Additionally, during fifth period every other Friday, SWAHS provides students the opportunity to participate in activities extending beyond the classroom such as yoga, mindfulness, art, board games, basketball and video gaming.

Start Time / End Time	Indigenous / World Languages
8:45 a.m.–2:25 p.m.	None





# Talent Development and Advanced Academics

Talent Development and Advanced Academic (TDAA) services are offered at all SoWashCo Schools. **Students must be identified and invited to participate** in elementary and middle school cluster classrooms or the Gateway Program at Valley Crossing Elementary School. High school advanced course options are available to all high school students.

## Advanced Learner Identification Process

SoWashCo Schools screens and identifies students annually for talent development services, using multiple pieces of data. The district universally screens students for exceptional achievement and the ability to comprehend and gain knowledge in order to address their needs with greater depth and complexity.

- All students in grade 2 are universally screened for services.
- Multiple achievement data points, including the Measures of Academic Progress (MAP) assessment, are reviewed annually along with teacher input to determine students that may need further screening.
- Students in grades 4-7 who were not previously identified but are demonstrating outstanding abilities may be screened for talent development services.
- Students in grades 4-7 may also be referred by a parent or guardian

### Grade 3-8 Enrichment and Extension Services in a Cluster Classroom

- Advanced learners with similar strengths are placed together in a classroom, with a teacher who has received additional training in meeting the needs of advanced learners.
- This classroom includes a broad range of student achievement levels and offers enrichment and extension activities that are targeted to each student's strength.
- Students with similar advanced characteristics are able to learn with a group of similar academic peers.

**Learn more** at [sowashco.org/academics/talent-development](http://sowashco.org/academics/talent-development)

### Grade 3-5 Gateway Program

- Located at Valley Crossing Elementary School.
- Students are serviced in an all-advanced learner-peer environment. This program is often well-suited for students that have the potential to thrive in a different learning environment than their current boundary school.
- Teachers use curriculum with increased depth, complexity and pacing.
- Students are immersed in an intellectually challenging community that encourages academic risk-taking.

**Learn more** at [vces.sowashco.org/academics/gateway-program](http://vces.sowashco.org/academics/gateway-program)

### Young Scholars

Students are identified using multiple data points and based on the observation of culturally diverse talented learner characteristics and advanced potential. Young scholars focus on underrepresented populations and work to help students grow through higher-order thinking activities using a strength-based lens.

**Learn more** at [sowashco.org/youngscholars](http://sowashco.org/youngscholars)

### High School

Each high school offers choice-based programs of study that allow for students to access challenging coursework such as:

- Advanced Placement (AP) courses
- International Baccalaureate Program (IB) at Park High School
- Project Lead the Way at East Ridge and Woodbury High Schools
- College in Schools (CIS) at East Ridge and Woodbury High Schools
- Post Secondary Enrollment Options (PSEO) at Park, East Ridge and Woodbury High Schools

# Great Rivers Adult Education Consortium



The Great Rivers Adult Education Consortium provides adult basic education, professional development, diploma completion and English language courses to adults ages 17+. Programming is available for residents of Washington and Dakota counties at no cost. Learn more and apply at [commed.sowashco.org/greatrivers](http://commed.sowashco.org/greatrivers).

## Basic Education and Professional Development

- Essential computer skills
- Internet and email basics
- Essential software skills – including Microsoft Word, Excel, PowerPoint and Google Docs
- Using technology in daily life – social media, information literacy, career search skills, supporting K-12 distance learning and your digital footprint
- Customer service internship
- Microsoft Office Specialist (MOS) Associate Certificate Training
- Official Certiport MOS Test Center

## Diploma Completion

- Earn your GED diploma or K-12 diploma.
- K-12 diploma completion
- GED test preparation
- Official Pearson Vue GED® Test Center

## English Language

Learn to speak, read and write in English. Beginning, intermediate and advanced classes are available.

### Additional support courses:

- Conversation
- Pronunciation
- English in the workplace
- Practical life skills
- Basic computer skills
- Career exploration
- U.S. citizen test prep



## Locations:

### District Program Center

8400 East Point Douglas Rd. S., Cottage Grove, MN 55016

### Woodbury Central Park

8595 Central Park Pl, Woodbury, MN 55125

### Tilden Community Center

310 River St, Hastings, MN 55033

Register online at [commed.sowashco.org/greatrivers](http://commed.sowashco.org/greatrivers)

## No English?

Please text or email, in your own language, for information about our FREE programs.

Envíe un mensaje de texto o correo electrónico, en su propio idioma, para solicitar información sobre nuestros programas GRATUITOS.

651-270-3266 | [greatrivers@sowashco.org](mailto:greatrivers@sowashco.org)

# SoWashCo Schools District Directory

Name	Title	Email
Julie Nielsen	Superintendent	super@sowashco.org
Tyrone Brookins	Assistant Superintendent Oversees: <ul style="list-style-type: none"> <li>• Elementary Schools</li> <li>• Gateway Program</li> <li>• Multiage Magnet Program</li> <li>• Spanish Immersion Magnet Program</li> </ul>	tbrookin@sowashco.org
Kelly Jansen	Assistant Superintendent Oversees: <ul style="list-style-type: none"> <li>• Middle Schools</li> <li>• Achievement and Integration</li> <li>• English Learners</li> <li>• Talent Development and Advanced Academics</li> <li>• Professional Development</li> <li>• Program Evaluation, Research and Assessment</li> <li>• Student Information</li> <li>• Teaching and Learning</li> <li>• Technology</li> </ul>	kjansen@sowashco.org
Kristine Schaefer	Assistant Superintendent Oversees: <ul style="list-style-type: none"> <li>• High Schools</li> <li>• Athletics and Activities</li> </ul>	kschaef2@sowashco.org

## SoWashCo School Board

School board business meetings are streamed on SoWashCo Schools Youtube page, [www.youtube.com/sowashcoschools](http://www.youtube.com/sowashcoschools).

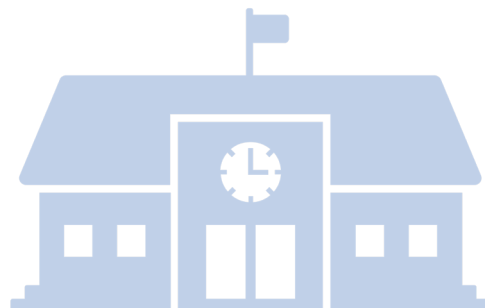
### School Board Members

- Sharon Van Leer
- Melinda Dols
- Patricia Driscoll
- Louise Hinz
- Simi Patnaik
- Katie Schwartz
- Eric Tessmer



# SoWashCo Schools District Directory

Name	Title	Email
James Magee	The Department of Diversity, Equity and Inclusion Director	jmagee@sowashco.org
Shawn Hogendorf	The Department of Communications and Community Relations Director	shogendo@sowashco.org
Robert Lawrence	The Department of Community Education Director	rlawrenc1@sowashco.org
Kyle Uecker	The Department of Facilities and Construction Director	kuecker@sowashco.org
Dan Pyan	The Department of Finance and Purchasing Director	dpyan0@sowashco.org
Abby Baker	The Department of Human Resources and Benefits Director	abaker3@sowashco.org
Wendy Peterson	The Department of Nutrition Services Director	wpeterso1@sowashco.org
Mao Jacobson	The Department of Program Evaluation, Research and Assessment Director	mjacobs01@sowashco.org
Anna Braun	The Department of Special Services Director	abraun1@sowashco.org
Trisha Turitto	The Department of Student Services Manager	tturitto@sowashco.org
Arthur Williams	The Department of Teaching and Learning Services – Elementary Education Director	awilliam17@sowashco.org
Tia Clasen	The Department of Teaching and Learning Services – Secondary Education Director	tclassen@sowashco.org
Robert Berkowitz	The Department of Technology Services Director	rberkowitz@sowashco.org
Carrie Olson	The Department of Transportation Services Director	colson@sowashco.org





# Enrollment Questions and Answers

## Student Information Services

### What is Student Information's Role?

SoWashCo Schools Student Information Services works to assist students and families in finding their boundary schools, enrollment, homeschooling option, intra-district transfers, open enrollment, Infinite Campus support, student records, demographics, graduation and immunization records.

### What is an Intra-District Transfer?

Intra-district transfers (IDT) are for students in grades K-12 living within the boundaries of SoWashCo Schools but wish to attend a school other than their boundary school or wish to transfer from a private or charter school.

### What is the Application Process for an IDT?

Families can apply for an intra-district transfer annually. The application process begins Saturday, Oct. 15, 2022 for middle and high school students and Thursday, Dec. 1, 2022 for elementary students. Applications submitted after the deadline are added to existing waitlists.

### What is the Application Process for Open enrollment?

Families can apply to open enroll their child(ren) in some SoWashCo Schools by completing the open enrollment application, found at [sowashco.org/enroll](https://sowashco.org/enroll). Due to capacity constraints, some schools and grade levels are closed to open enrollment.

### Can my child finish the school year if our family is moving outside of SoWashCo Schools boundaries?

Students moving outside of SoWashCo Schools attendance boundaries during the school year may apply for open enrollment to finish the school year at their current school; however, the student may be assigned to a different school the following year. SoWashCo Schools retains the right to assign non-resident students to other schools when these transitions occur, based on capacity and program.

**For further assistance please contact the Student Information Department at 651-425-6218.**



# Health Services



SoWashCo Schools Health Services helps eliminate and minimize health-related barriers to learning. Health services staff provide care for students with:

- Illness
- Injuries
- Chronic health conditions
- Medication administration
- Immunization review and compliance monitoring
- Vision and hearing screening
- Implementations of health accommodations
- Creation and implementation of individualized health plans and emergency care plans
- Care coordination with parents and health care providers
- Prevention and control of communicable diseases
- Staff education

## Reporting an Absence

Families should report their child's absence each day they will be absent from school. Parents can report their child's absence through Campus Parent Portal.

Once logged into your account:

- Use the "Absence Request" tool to submit a request to the attendance office before your child is going to be absent.
- The attendance office will process the request and an attendance record will be created for your child in your Campus Parent Portal account.

If you are unable to use your Campus Parent Portal account, please call your child's school and provide:

- Child's name
- Child's grade
- Why they are absent
- If your child has symptoms or has been diagnosed with any communicable disease.

## Prescription Medication Distribution

SoWashCo Schools provides health services personnel to dispense medication to students in need of medication during school hours. Families must complete the parental permission form, have a doctor health care provider permission form, and follow all other requirements as listed at [sowashco.org/services/health](https://sowashco.org/services/health).

## Vision Screening

Healthy students are better learners. The ability to see adequately is directly linked to academic success. SoWashCo Schools Health Services annually screen students for vision acuity.

- Vision screening is done for all students in grades 1, 3 and 5 each year.
- Color vision screening is done each year for kindergarten boys only.
- Additional vision or hearing screening may be requested by teacher, parent, or student or when a student is referred for evaluation of learning difficulties.
- Parents will be notified of students who do not pass screening via a referral form that the health care provider completes. Once complete, it should be returned to the school health office.



# Required Immunizations

The Minnesota School Immunization Law (Minn. Statute 121A.15) requires that all students enrolled in school be protected from childhood diseases by receiving immunizations. This includes students enrolled in PreK-12 schools or programs, Kids Club, preschool, alternative programs and home school programs.

Your child's immunization dates, or a medical or non-medical exemption, must be shared with the school health office before the first day of school. For more information including required forms, low-cost immunization clinics and recommended immunizations for teens, please visit [sowashco.org/health](http://sowashco.org/health).



Required Vaccinations			
Birth through Age 4 Early Childhood programs and child care	Age 5 to 6 Kindergarten	Age 7 to 11 Grades 1-6	Age 12 and Older Grades 7-12
Hepatitis A (Hep A) ✓	-----	-----	-----
Hepatitis B (Hep B) ✓✓✓	Hepatitis B (Hep B) ✓✓✓	Hepatitis B (Hep B) ✓✓✓	Hepatitis B (Hep B) ✓✓✓
DTap/DT ✓✓✓✓	DTap/DT ✓✓✓✓	Tetanus and Diphtheria containing doses ✓✓✓	Tdap (and at least two tetanus and diphtheria containing doses) ✓
Polio ✓✓✓	Polio ✓✓✓✓	Polio ✓✓✓	Polio ✓✓✓
MMR ✓	MMR ✓✓	MMR ✓✓	MMR ✓✓
Hib ✓	-----	-----	Meningococcal and booster ✓
Pneumococcal ✓✓✓✓	-----	-----	-----
Varicella (Chicken Pox) ✓	Varicella (Chicken Pox) ✓✓	Varicella (Chicken Pox) ✓✓	Varicella (Chicken Pox) ✓✓
Highly Recommended, But Not Required			
Rotavirus (for infants)	Influenza (annually for anyone age six months and older)	COVID-19 Vaccine (available for anyone age five and older as of Dec. 2021)	Human Papillomavirus (begins at ages 11-12)

✓ Each check mark represents the number of doses a child should have by age group.

# Nutrition Services

Nutrition Services provides healthy and nutritious meals to students that meets or exceeds USDA standards. Every menu consists of whole grains, lean protein, fruit and/or vegetable and milk daily.

Individual items (a la carte) and menu prices are available at [sowashco.org/services/nutrition](https://sowashco.org/services/nutrition).

## SchoolCafe

SoWashCo Schools uses SchoolCafe for student meal accounts. Parents can set low balance email reminders, schedule automatic payments when a balance of your choosing is reached, review student purchases online, view menus and apply for free and reduced education benefits.

## Educational Benefits

SoWashCo School families are encouraged to apply for educational benefits every year. SoWashCo Schools serves the same healthy meals to all students and provides the same services, no matter their income status.

Applications can be submitted online, dropped off at your child's school or the District Service Center. For more information or to access the application visit, [sowashco.org/services/nutrition](https://sowashco.org/services/nutrition).





# More Than A Meal Application

Completing the Educational Benefits Form provides a variety of discounted or free benefits. It also helps provide essential funding to support all students in the district.

**Learn more and apply at [sowashco.org/edbenefits](https://sowashco.org/edbenefits)**



## **Meals**

Students can receive discounted or free meals at school.



## **Field Trips**

Schools can offer discounted or free field trips to students



## **Community Education Programs**

Discounted or free classes and activities in the arts, athletics, academics and more.



## **Instrument Rentals**

Discounted or free instrument rentals for school band or orchestra.

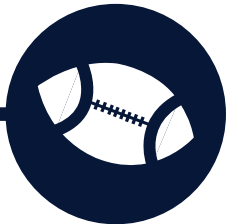
## **Kids Club**

Discounted Kids Club childcare before and after school and on non-school days.



## **Athletics**

Students can participate in discounted or free school athletics.



## **Student Fees**

Receive free or discounted graduation fees, student parking permits and more.



## **Device Protection Plans**

Receive free or discounted protection plans on school provided devices.



# Family Resources



## Calendar

The district and family calendar can be found at [sowashco.org/calendar](https://sowashco.org/calendar). Calendars specific to your child's school can be found on the school's website.



## Campus Parent Portal

Campus Parent Portal allows parents or guardians to view online information about student class schedules, report and view attendance, view school bus route assignments, and more. Parents and guardians are required to update their accounts annually before the school year. For help, please email [ICSupport@sowashco.org](mailto:ICSupport@sowashco.org).



## Pay Fees (SmartSchoolK12)

Pay Fees/SmartSchoolK12 is used for processing payments for school fees such as parking, transcripts, clubs, competitive activities and more. You can set up an account at [sowashco.org/fees](https://sowashco.org/fees).



## School Cafe

Student school meal accounts can be managed through SchoolCafe. SchoolCafe has a free mobile app available for use on any mobile device. You can set up an account at [schoolcafe.com/sowashco](https://schoolcafe.com/sowashco).



## Schoolology

Schoolology is an online learning platform, or Learning Management System (LMS), used at all secondary SoWashCo Schools. Teachers post assignments, classroom resources, quizzes and a course calendar with due dates and deadlines. Students and parents should use Schoolology to review assignments and grades to stay on top of academic progress. For more information visit [sowashco.org/families/schoolology](https://sowashco.org/families/schoolology). For help with Schoolology, please email [schoolologyhelp@sowashco.org](mailto:schoolologyhelp@sowashco.org).



## Seesaw

Seesaw is a student portfolio intended to give students in grades K-5 a place to create, submit and share learning with the class, teachers and parents. The simplicity of Seesaw provides an easy entry into digital learning. The Seesaw class and family apps are available to download on Android and iOS. For more information visit [sowashco.org/families/seesaw](https://sowashco.org/families/seesaw). For help with Seesaw, please email [seesawHelp@sowashco.org](mailto:seesawHelp@sowashco.org).





**Be seen. Be heard. Be bold.**

## Why SoWashCo?

- Excellent Benefits
- Commitment to Equity
- Professional Development Opportunities
- Career Growth
- Teacher Mentorship Programs



## Now Hiring:

- Academic Support Services
- Elementary Teachers
- High School Teachers
- Special Education Teachers
- Special Education Paraprofessionals
- Athletics and Activities Coaches
- Community Education Positions
- Kids Club Child Care
- Bus Drivers and Bus Assistants
- Facilities
- Crossing Guards
- Health Services
- Lunch / Recess Assistants
- Nutrition Services

*\*Some positions may qualify for hiring or retention bonuses*

- Substitute Teachers
- Substitute Paraprofessionals

**Learn more and apply at [sowashco.org/careers](https://sowashco.org/careers)**

**Or call 651-425-6291**





Independent School District #833  
7362 East Point Douglas Rd. S.  
Cottage Grove, MN 55016  
[www.sowashco.org](http://www.sowashco.org)

NON-PROFIT ORG.  
U.S. POSTAGE  
PAID  
PERMIT NO. 7911  
TWIN CITIES, MN

## Stay Connected



@SoWashCoSchools



SoWashCoSchools



SoWashCoSchools



South Washington County Schools



**so  
wash  
co** SCHOOLS