

Somali

Maxay ka dhigan tahay in la helo Adeegyada Barnaamijka English Learner (EL)?



Hadafka wax-barashada ee bartaha Ingiriiska/English Learner (EL) waa in laga taageero ardayda si ay u gaadhaan aqoonta luqadda Ingiriiska ee looga baahan yahay si ay ugu guulaysantaan tacliin ahaan iyo in la xaqiijiyo yoolalka shakhsi ahaaneed, bulsho, iyo shaqo. Macalimiinta EL ee shatiyaysan waxay la shaqeeyaan ardayda inta lagu jiro maalinta dugsiga si ay u taageeraan oo ay u dardargeliyaan horumarinta luqadda dhammaan qaybaha nuxurka.

Luuqada Waxbarashada

Macalimiinta EL waxay kala shaqeeyaan ardayda si ay u taageeraan oo ay u dardargeliyaan horumarinta luqadda Ingiriiska ee maadooyinka akadeemiyada: Xisaab, Saynis, Luuqada Ingiriiska, Cilmiga Bulshada.



Luuqada Bulshada iyo Waxbarashada

Macalimiinta EL waxay taageeraan oo ay dardargeliyaan horumarinta luuqada Ingiriiska ardayda ee dhinacyada bulsho iyo waxbarasho.



Sheltered Courses

Dugsiga Dhexe iyo Sare, ardayda bilaabaya inay bartaan Ingiriiska waxay la dhigtaan qoorsooyinka caadiga ah ardayda kale ee heerarka isku mid ah ah ee aqoonta luuqada ee ay dhigaan macalimiinta EL



Cashaar La wada barto

Macallinka EL iyo macallinka fasalka caadiga ah ayaa wada shaqeeya si ay u bixiyaan waxbarid ku salaysan heerarka lagu taageerayo horumarinta luqadda. Macallinkastaa wuxuu ku hagayaa wax-barashada takhasuskiisa iyo maadada uu yaqaan.



CCashaar la wada barto waxay ka dhacdaa dugsiga hoose, dhexe, iyo sare

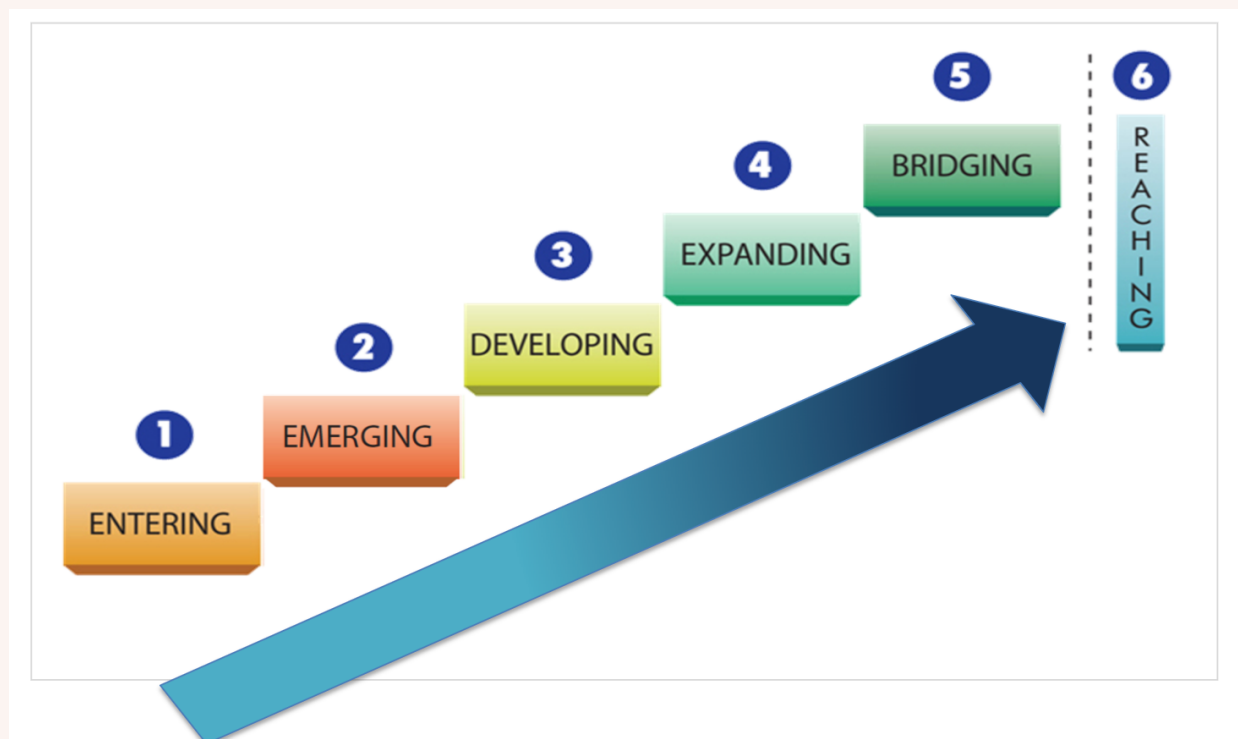
Waxbarid tiro kooban

Macalimiinta EL waxay bixiyaan barashada horumarinta luqadda oo la siiyo tiro yar oo loogu talagalay baahiyaha ardayga iyo heerarka luqadda.



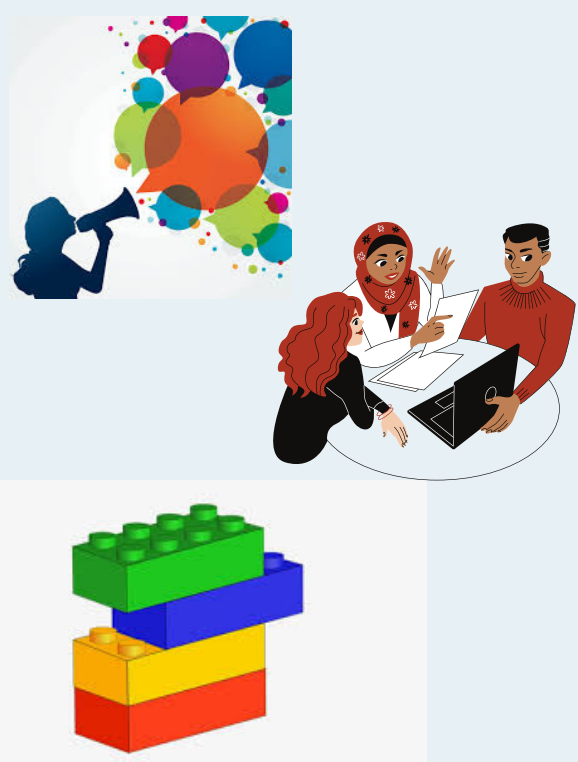
Horumar ilaa aqoon

Macalimiinta EL waxay ardayda ku taageeraan horumarinta luqaddooda xagga aqoonta buuxda ee Ingiriiska xagga Dhageysiga, Hadalka, Akhriska, iyo Qorista. Kartida aqoonta waxa lagu qiyaasaa sanad walba qiimaynta ACCESS.



Dhaqamada Muhiimka ah

Macalimiinta EL ka, fasalka, iyo fasalada caadiga waxay ku daraan nidaamyada waxbarashada takhasuska gaarka ah ee taageera dardargeliyana horumarinta luqadda inta ay ardaydu baranayaan maadooyinka caadiga ah ee dugsiga.



Wixii macluumaad gaara ee ku saabsan adeegyada ardaygaagu helo, fadlan la xiriir macallinka EL ee ardaygaaga.

Sidee ilmahayga loogu aqoonsaday Ilmahayga Barnaamijka Bartaha Ingiriisiga (EL)?



Ardayda galaya Osseo Area Schools waxaa lagu gartaa inay u baahan yihiin adeegyada Bartaha Ingiriiska (EL) iyadoo la raacayo tilmaamaha gobolka iyo federaalka iyo nidaamyada adeegyada barnaamijka EL. Tilmaamaha gobolka iyo federaalka waxaa ka mid ah go'aaminta luqadaha guriga ee ardayda iyo heerarka aqoonta Ingiriiska.

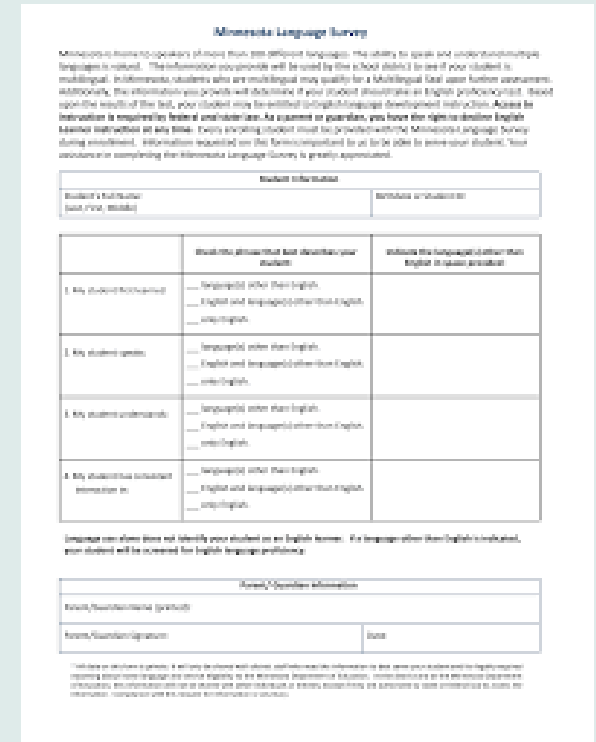
1

Xarunta Diiwaangelinta

Ardayda cusub waxay iska diiwaan galiyaan Osseo Area Schools Xarunteeda Diiwaangelinta si ay isagu diiwaangeliyaan dugsiiga oo lagu meeleeyo goob dugsi.

Sahanka Luuqada Minnesota

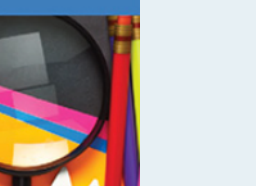
Dhammaan ardayda galaya Osseo Area Schools waxay buuxiyaan Sahanka Luuqada Minnesota. Foomkan ayaa tilmaamaya luqadaha uu ilmuhu isticmaalo. Haddii luqad aan Ingiriisi ahayn lagu daro, ardaygu waxa uu xaq u yeelan karaa in uu helo adeegyada EL.



2



3



4



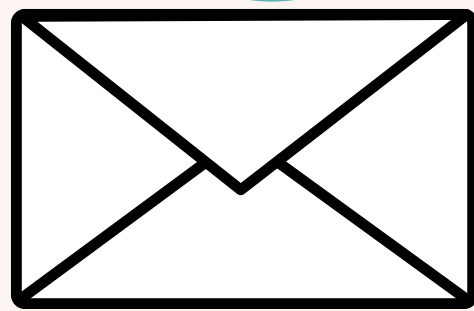
5



Warqada Ogeysiinta Waalidka

Marka ardaygu helo buundada u qalmida, degmadu waxay waalidiinta u dirtaa warqad ogeysiinaysa in ilmahooda loo diiwaangeliyey adeegyada EL. Waalidiintu waxay xaq u leeyihiin inay u diidaan adeegyada EL ilmahooda.

4



Imtixaanka Aqoonta Ingiriisiga

Haddii qoysku ku sheego Sahanka Luqadda Minnesota in ilmahoodu ku hadlo luqad kale, ama aan Ingiriisi ahayn, khabiir ku takhasusay diiwaangelinta ayaa ka qaadi doona imtixaan baadhis aqooneed oo Ingiriisi ah. Haddi natijada imtixaanku muujiso baahida loo qabo in lagu kaalmeeyo horumarinta Ingiriisida, ardaygu waxaa loo diiwaangelinayaa adeegyada barnaamijka EL.



5

Bilowga Adeegyada EL

Macalimiinta EL ee liisanka haysta waxay bixiyaan waxbarid horumarinta luqadda iyo taageerada iyagoo u maraya wax barid, tiro kooban, ama waxbarid gooni ah.

ACCESS

6

Imtixaanka

ESannad kasta bilaha Febraayo iyo Maarso, ardayda loo aqoonsaday adeegyada barnaamijka EL waxay qaataan imtixaanka ACCESS. Imtixaanku wuxuu qiimeeyaa aqoonta Ingiriisiga ee ardayda xagga Akhriska, Qorista, Dhageysiga, iyo ku hadalka.



Adeegga Joogtada ah

Ihaddii buundooyinka imtixaanka ACCESS ee ardaygu muujiyaan baahida loo qabo taageero dheeraad ah si uu u horumariyo Ingiriiska, ardaygu wuxuu sii wadaa inuu helo adeegyada EL marka ay u gudbaan aqoonta buuxda ee Ingiriiska. Siyaasadda gobolka ayaa go'aamisa buundooyinka ACCESS ee ka bixista adeegyada ama ardaygu inuu sii wato helitaanka adeegga EL.

Wixii macluumaad gaara ee ku saabsan adeegyada ardaygaagu helo, fadlan la xiriir macalinka EL ee ardaygaaga.

Somali

Ilmahaygu had iyo jeer ma heli doonaa Adeegyada Barnaamijka Bartaha Ingiriisiga (EL)?

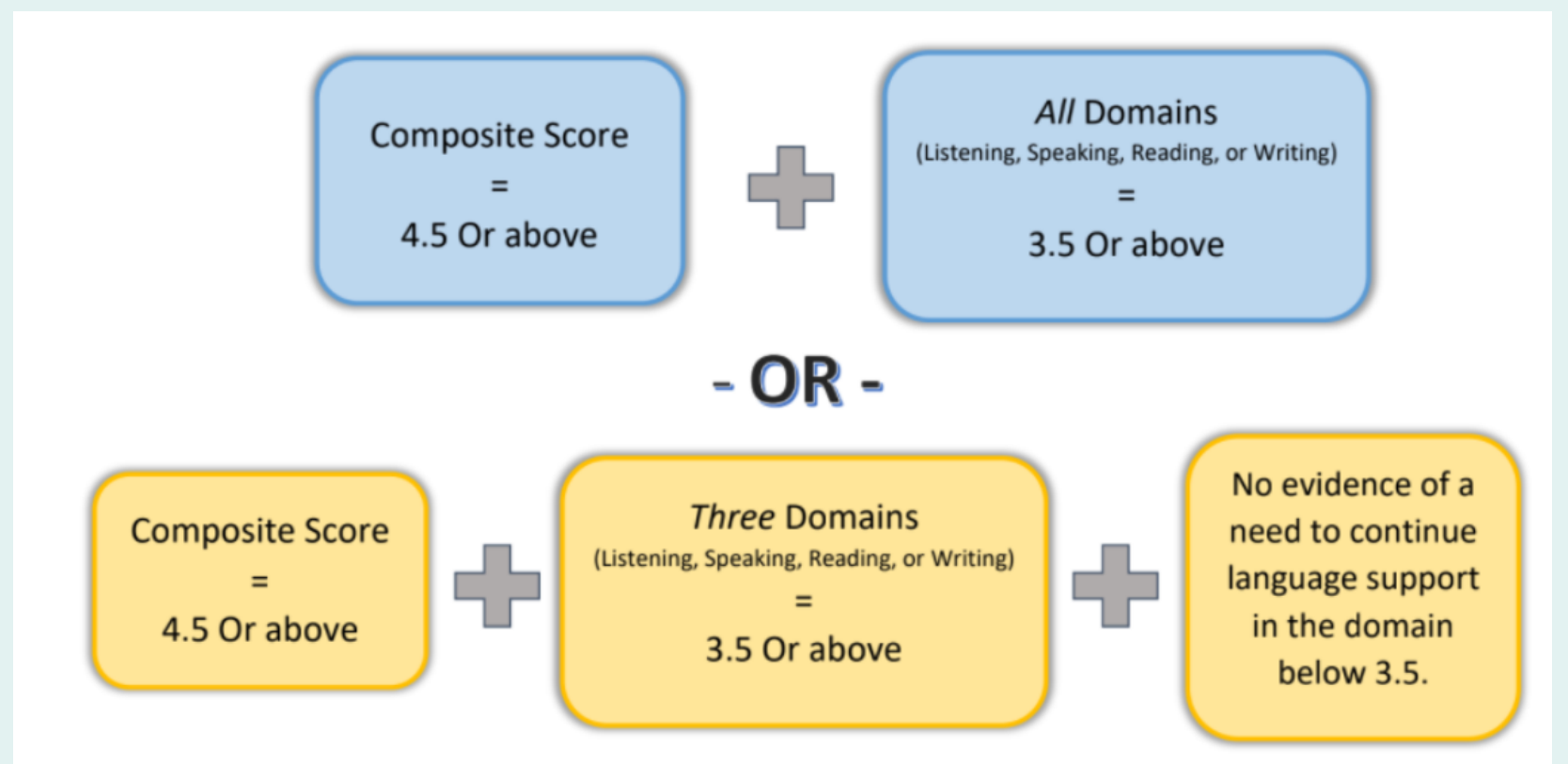


Hadafka waxbarida Bartaha Ingiriisku (EL) waa ardaydu gaadhaan aqoonta Ingiriisiga oo ay ka baxaan adeegyada barnaamijka EL. Osseo Area Schools waxay raacaan tilmaamaha gobolka iyo federaalka ee go'aaminta marka ardaygu gaadhay heerka aqoonta Ingiriiska lagama maarmaanka u ah inuu si buuxda uga qaybqaato dhammaan maaddooyinka akadeemiyada iyada oo aan loo baahnayn taageero luqadeed oo dheeraad ah. Ka dib markii ay gaaraan heerkan aqoonta, ardaydu ma helaan adeegyada EL.

Shuruudaha ka bixida

Students identified for EL program services "exit" Ardayda loo aqoonsaday adeegyada barnaamijka EL waxay "ka baxaan" adeegyada marka ay gaaraan dhibcaha u qalmida imtixaanka ACCESS. Dhibcaha u-qalmidaanka ayaa tilmaamaya heerka sare ee aqoonta akhriska, qorista, hadalka, iyo dhegeysiga waxayna tustaa in ardaygu aanu hadda u baahnayn taageerada luqadda si uu guulo tacliineed u gaaro. Sawirka dhanka midig wuxuu muujinayaa buundooyinka u-qalmidaanka ee ka bixitaanka EL. Dhibcaha Isku-dhafka ah waa isku-darka dhammaan afarta qaybood (akhrinta, qorista, hadalka, dhegeysiga) laakiin miisaan badan ayaa la siiyaa dhibcaha akhriska iyo qorista. Dhibcaha Isku-dhafka ah ayaa ka kooban 35% Wax-akhris, 35% Qoraal, 15% Dhegeysi, 15% Hadalka.

ACCESS Test Scores Qualification for EL Exit



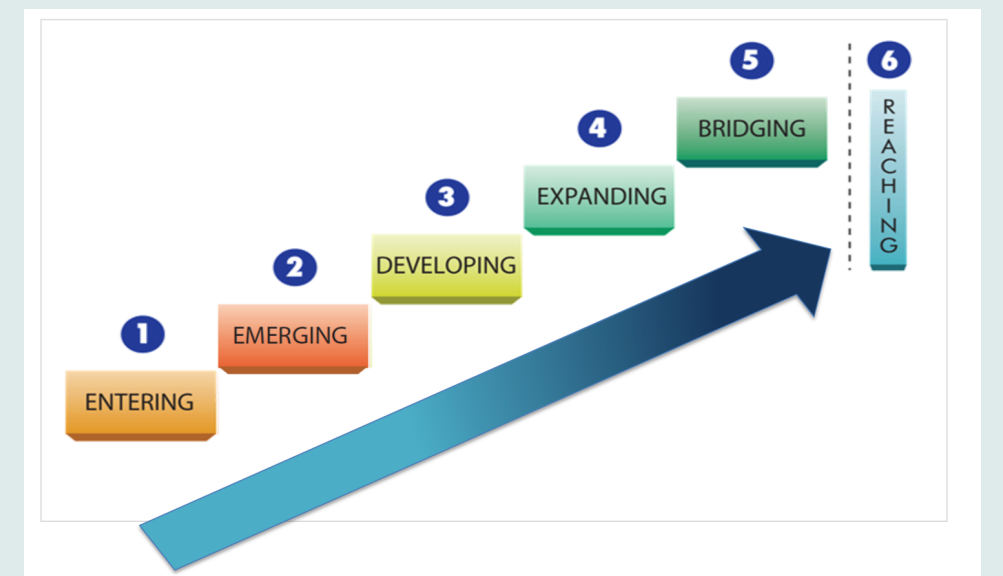
Imtixaanka ACCESS

Imtixaanka ACCESS waxa la qaadaa sanad walba bilaha February iyo March. Ardayda loo aqoonsaday adeegyada barnaamijka EL waxay galaan imtixaanka ACCESS. Imtixaanku wuxuu qiimeeyaa aqoonta Ingiriiska ee ardayda xagga Akhriska, Qorista, Dhageysiga, iyo Hadalka.



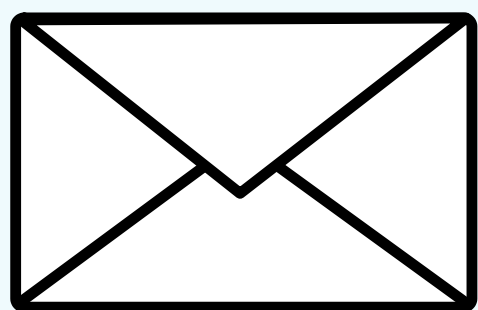
Heerarka ACCESS

Dhibcaha heerka aqoonta imtixaanka ACCESS ayaa qeexaya waxqabadka ardayda marka loo eego Heerarka Aqoonta Luuqada Ingiriiska WIDA ee lixda ah. Marka la joogo heerka isku dhafan ee 4.5 iyo wixii ka sareeya, oo leh 3 ama in ka badan oo meel ka sareeya 3.5, ardaygu wuxuu ka baxaa adeegyada EL.



Qaabka bixitaanka

Dhammaan ardayda ka baxda, waalidiintu waxay boostada loogu diraa warqad ka bixitaan ah oo u sheegaysa in ilmaheedu gaadhay heer sare oo ay ka bixi doonaan adeegyada EL dhamaadka sannad dugsiyada.



Kormeerka iyo la socodka Ardayga:

Sharciga gobolka MND wuxuu ka rabaa degmooyinka iskuulada inay la socdaan horumarka tacliimeed ee ardayda EL laba sano ka dib markay ka baxaan adeegyada barnaamijka EL. Marka lagu jiro Osseo Areas Schools, khabiirada diiwaangelinta waxay la shaqeeyaan macalimiinta fasalka iyo kuwa takhasuska ah si ay u qiimeeyaan horumarka ardayga oo ay u go'aamiyaan baahi kasta oo dheeraad ah ee taageerada luqadda. Haddiiba ay dhacdo xaalad dhif ah oo uu ardaygu u baahan karo inuu ku soo laabto adeegyada EL, waalidiinta ayaa lagu daraa habka go'aan qaadashada.

Wixii macluumaad gaara ee ku saabsan adeegyada ardaygaagu helo, fadlan la xiriir macalinka EL ee ardaygaaga.