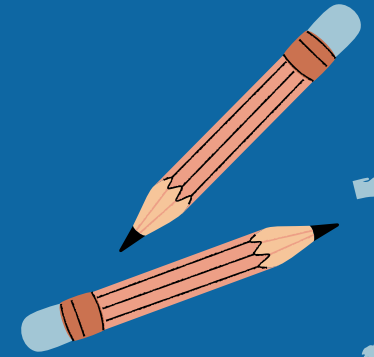


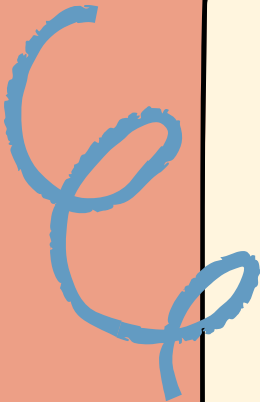
# Welcome Preschool Families!



Riding the wave to a bright future



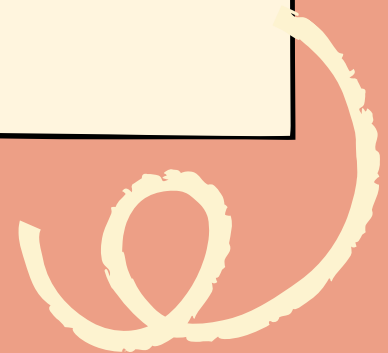
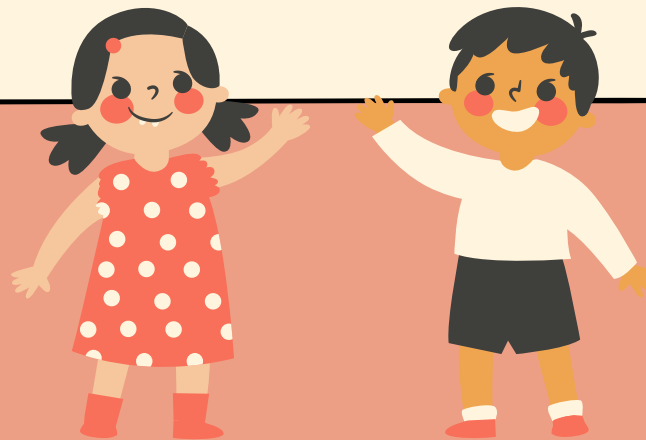
**Oceanside School District**  
RIDING THE WAVE TO A BRIGHT FUTURE



CPSE (Preschool)  
to  
CSE (Kindergarten)

Transition Meeting

2022-2023 School Year





## Special Education Leadership Team

- Tracy Murray, Executive Director of Special Education
- Saudia Mahamed, Director of High School Special Education
- Dr. Kristen Lamparello, Director of PPS and Middle School Special Education
- Kate Mugno, Director of Elementary Special Education
- Robin Trichon, Director of Early Childhood Special Education
- Michael Radicone, CPSE/CSE Chairperson, Special Education Teacher



# Parent and Professional Partnerships are Prioritized!

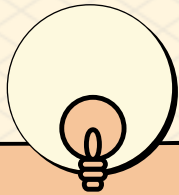
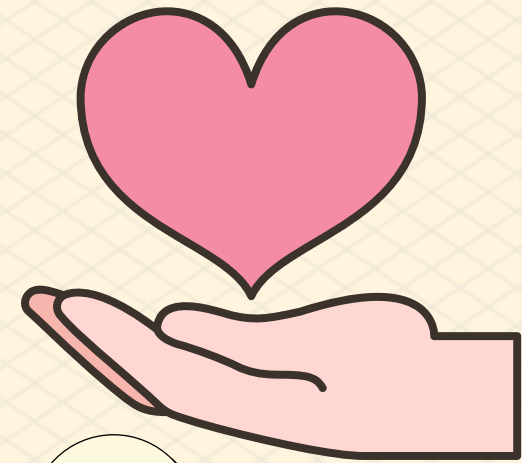
Collaborative  
Communication

Planning together and sharing in the  
responsibility for ensuring a quality  
education for your child

Respecting one another's opinion  
and knowledge



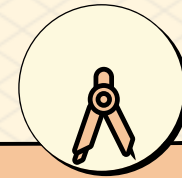
# Please share!



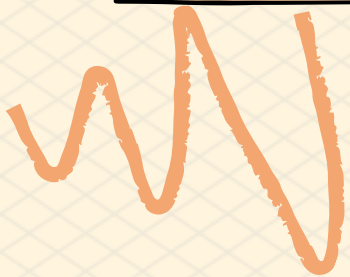
What my child's  
strengths  
are



What I've  
discovered  
that works



Ways that  
my  
child learns



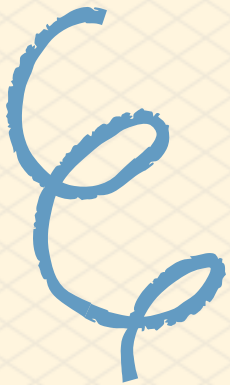
# Agenda

REVIEW COMPONENTS  
OF THE TRANSITION  
PROCESS



PRESENT INFORMATION ABOUT  
THE CSE

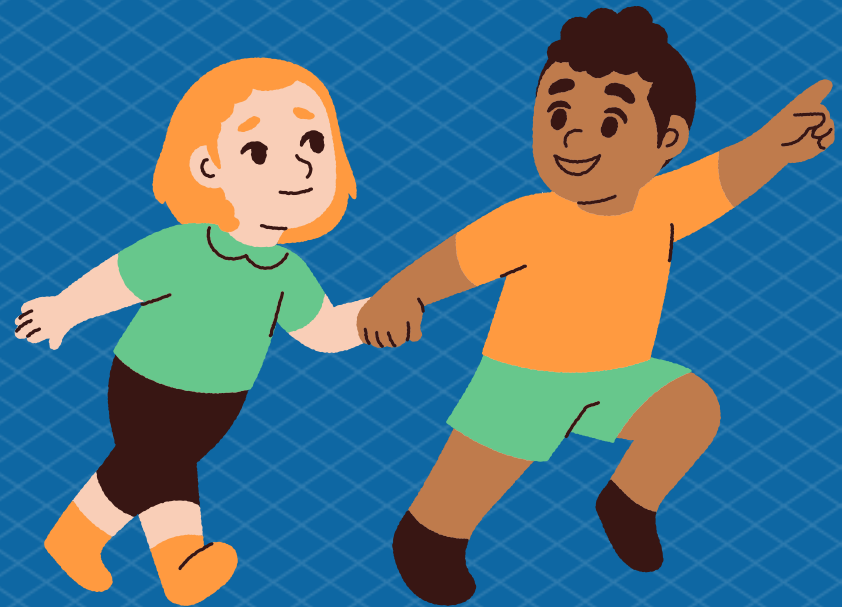
ENGAGE IN A VALUABLE  
DISCUSSION BASED ON YOUR  
QUESTIONS



# WHEN WILL MY CHILD GO TO KINDERGARTEN?



Children who will be five years of age on or before December first are eligible to attend kindergarten at the start of the 2023-2024 School Year.





[Click Here](#)

**School #6  
Kindergarten Center**

Julie McGahan, Building Principal

(516) 594-2345

[jmcgahan@oceansideschools.org](mailto:jmcgahan@oceansideschools.org)





# Registration for Kindergarten

Anchored Together  
By PURPOSE, PASSION, AND PEOPLE

SCHOOLS DISTRICT

HOME > PARENTS & STUDENTS

## Parents & Students

- [Calendar](#)
- [Code of Conduct](#)
- [Covid-19 Updates](#)
- [Clubs, Activities & DOCA](#)
- [Data Privacy](#)
- [Food Service & Menus](#)
- [Foster Care & Homeless Liaison](#)
- [Inclement Weather Policy](#)
- [Library Websites](#)
- [Parent Portal](#)
- [PTA](#)
- [Project Extra](#)
- [Register for School](#)
- [Safety, Health & Wellness](#)
  - [OSD Parent University Resources for Families](#)
  - [Northwell Health Partnership w/School Districts](#)
- [Tech Support](#)
- [Voting Information](#)

Click Here



Contact Phyllis Amisano in Central Registration  
(516) 678-6238 / [pamisano@oceansideschools.org](mailto:pamisano@oceansideschools.org)





You have been working with the Committee on Preschool Special Education (CPSE). At the Annual Review Meeting, you will also be meeting with the district's Committee on Special Education (CSE).



The Committee on Special Education (CSE) is a multidisciplinary team in the school district that recommends services and programs for school-age children with disabilities. According to New York State Regulations, when your child becomes eligible for kindergarten, the decision about his/her program and services becomes the jurisdiction of the CSE.



# CPSE/CSE Similarities

- Multidisciplinary evaluations
- Parent consent required for all evaluations/reevaluations
- Procedural Safeguards and Due Process Rights
- Committee consensus
- IEP Goals Based on student's present levels of performance (PLP)
- FAPE (Free Appropriate Public Education)
- LRE
- Annual Review
- Parent can request review of IEP



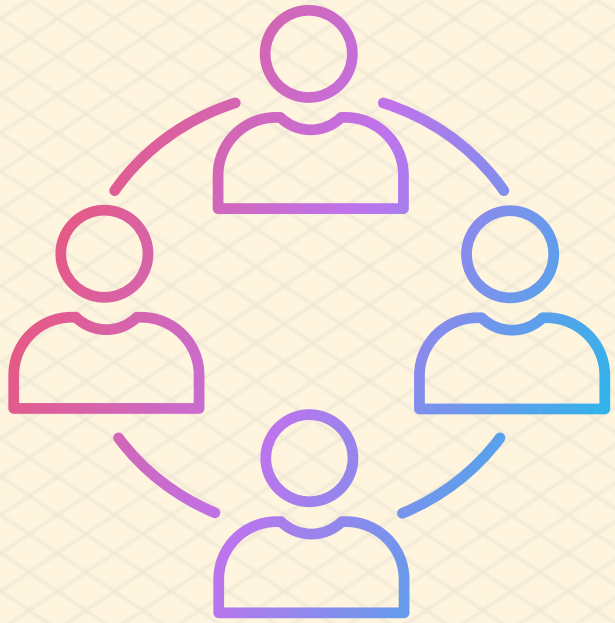
## CPSE

Services for children with disabilities, ages 3 to 5 years old, are provided in special education programs, nursery schools, office settings, child care settings or in the home.

## CSE

- Students with disabilities, are serviced in a variety of settings depending upon their individual needs.
- Students may be placed in a general education class with the support of supplementary aids and services as needed.
- If a child cannot be educated in a general education classroom, the district must make available options along the continuum of programs/services.
- There are other placements in the continuum outside the district school.
- No matter what placement is selected, each youngster must be educated in the least restrictive environment (LRE) for him or her.

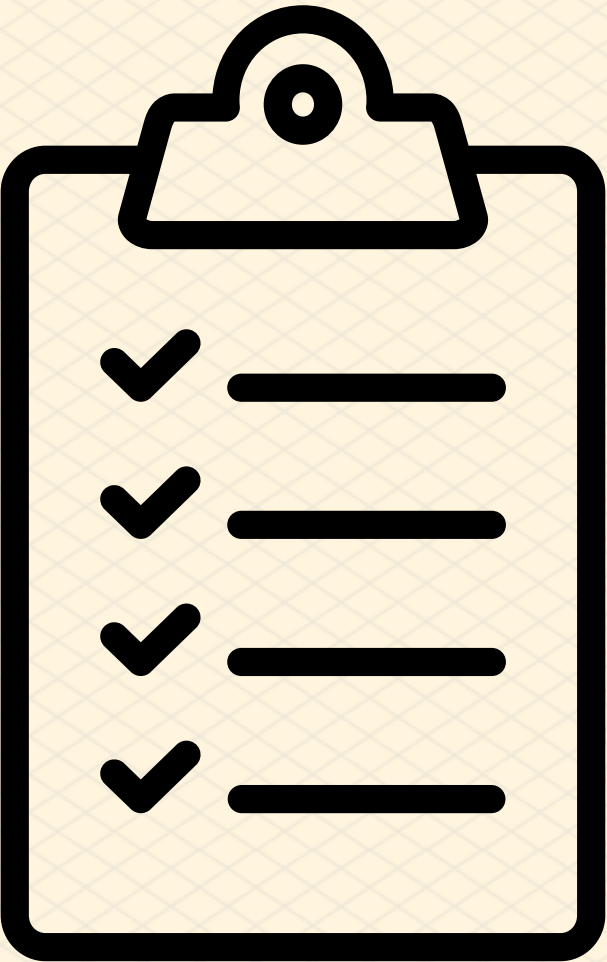
# Transition Meeting



CPSE ANNUAL REVIEW MEETING

CSE INITIAL ELIGIBILITY MEETING

# CPSE Annual Review Meeting

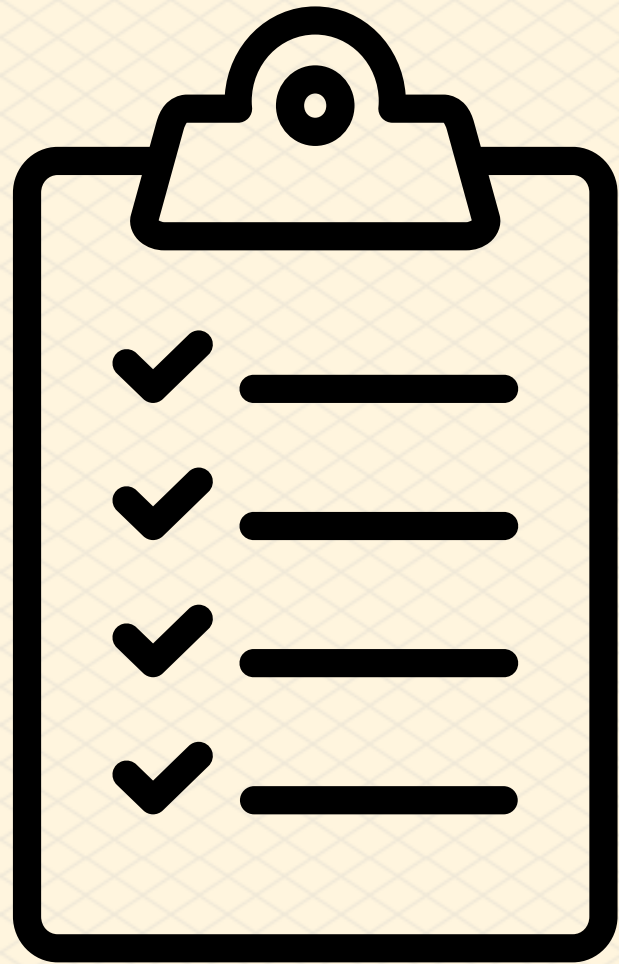


Annual review to discuss  
yearly progress

Determine Extended School  
Year services (ESY)

Determine whether your child  
will be: Declassified OR  
Referred to the (CSE)

# CSE Initial Eligibility Meeting



If eligible: Develop Individual Education Program (IEP)

## IEP INCLUDES:

- Present levels of performance, strengths, and needs
- Educational Classification
- Annual goals
- Recommend special education programs and placement (developed in conformity with the least restrictive environment (LRE) requirements)



# Disability Classification

Regulations require a specific disability classification for children age(s) 5-21 who receive special education services.

6

Classifications are descriptors of child's area of need; not a description of who a child is.

2

Classifications do not determine what services are delivered; the CSE develops the IEP and recommends programs and services based on student's unique needs as a result of the student's

# School-age Areas of Disability

- Autism
- Deafness
- Deaf-blindness
- Emotional Disturbance
- Hearing Impairment
- Intellectual Disability
- Learning Disability
- Multiple Disabilities
- Orthopedic Impairment
- Other Health Impairment
- Speech or Language Impairment
- Traumatic Brain Injury
- Visual Impairment, Including Blindness

[Click Here](#)



[\\*See Resource for Descriptions](#)

# Least Restrictive Environment (LRE)



This is the Federal and State regulatory definition of LRE. LRE means that placement of students with disabilities in special classes, separate schools or other removal from the regular educational environment occurs only when the nature or severity of the disability is such that even with the use of supplementary aids and services, education cannot be satisfactorily achieved.



# School-aged Continuum of Services

- Related Services
- Resource Room
- Consultant Teacher
- ICT (Integrated Co-Teaching)
- Special Class

- Supplementary Aids and Services/Program Modifications
- Support for School Personnel on Behalf of the Student



Educational Benefit



# Kindergarten Staff



- Julie McGahan- Principal
- Elizabeth Sporing- Administrative Assistant
- Laura Brady- Psychologist
- Greer Slovin- Social Worker
- Heathyr Greenberg- Special Education Teacher
- Maxianne Russo- Special Education Teacher
- Zoe Irwin-Special Education Teacher/Teacher Assistant
- Carina Dillon- Speech and Language Pathologist
- Meghan McLaughlin- Speech and Language Pathologist
- Morgan Kushnir- Occupational Therapist
- Jennifer Rowell-Physical Therapist
- Rachael Soloman- Health and Wellness TA



# Resource

**WELCOME TO KINDERGARTEN**

*Making the Transition from  
CPSE to CSE*

OCEANSIDE SCHOOL DISTRICT  
(516) 678-1217



Click Here



# Oceanside

# SEPTA

Special Education

Parent Teacher Association



Abby Blaum, SEPTA President

(516) 924-7413/abby2678@aol.com

# WHEN A CHILD HAS SPECIAL NEEDS KINDERGARTEN, PLANNING CAN BE:

- EXCITING
- OVERWHELMING
- CHALLENGING
- SCARY
- FUN
- DIFFERENT





*"No one  
belongs here  
more than you  
do"*

**BRENE  
BROWN**



Information in this presentation was provided

by:

Click Here 



New York State Education Department  
Office of Special Education  
**Educational Partnership**

