

# TRUMBULL PUBLIC SCHOOLS

## TRUMBULL, CONNECTICUT

Finance Committee of the  
Trumbull Board of Education  
Long Hill Administration Building  
Monday, November 22, 2021

4:30 PM

### MEETING AGENDA

1. Approval of minutes of October 20, 2021 meeting.
2. Review of Financials through October 31, 2021.
  - a. Fund 001 the BOE General Fund
  - b. Fund 009 the Town's Fund for Non-Public school expenditures
  - c. Fund 100 Student Activities
  - d. Fund 200 State and Federal grants
  - e. Fund 205 Special Revenue Funds
  - f. Fund 210 Food Service
  - g. Fund 300 Scholarships formerly Expendable Trust
3. Other Business
  - a. Fund Transfer per Operational Review
4. Adjourn

# TRUMBULL PUBLIC SCHOOLS

## TRUMBULL, CONNECTICUT

Finance Committee Of the  
Trumbull Board of Education

### Meeting Minutes

**Date of Meeting:** Wednesday, October 20, 2021

**Attendees:** Lucinda Timpanelli, Jackie Norcel, Scot Kerr, Lainie McHugh, Peg Brindisi, and Paul Hendrickson

**Location:** Long Hill Administration Building

The meeting was called to order at 4:30 pm.

The minutes of the October 7, 2021 meeting were approved.

Mr. Hendrickson reviewed the financial reports as of fiscal year end September 30, 2021 including:

- a. Fund 001 the BOE General Fund
- b. Fund 009 the Town's Fund for Non-Public school expenditures
- c. Fund 100 Student Activities
- d. Fund 200 State and Federal grants
- e. Fund 205 Special Revenue Funds
- f. Fund 210 Food Service
- g. Fund 300 Scholarships formerly Expendable Trust

Mr. Hendrickson stated that the cumulative percentage of budget spent year-to-date was 14.7%; in the past three years the percentage has ranged from 12.1% => 14.5%. While this percentage may appear a little high, he stated that salaries YTD were 11.1% of budget while in the past three years salaries YTD have ranged from 11.0% => 12.1%. Salaries are approximately 66% of the budget; Mr. Hendrickson is working with Payroll Manager Ms. Deb Nakano to do salary projections through yearend.

The Town Accounts (009) had year-to-date (YTD) expenses of \$50,318 or 4.0% of the budget.

The Student Activities accounts (100) increased \$15,701.21 from \$264,890.51 (8/31) to \$280,591.72 (9/30).

In reviewing grants (200), Mr. Hendrickson mentioned that \$52,668.19 has been drawn down from the \$765,457 in ESSER II grant, and the ESSER III / ARP grant has not been drawn down. Many of the accounts (which are annually funded) appear in deficit because the funding has not been confirmed by the State (the funds are normally committed in the October to early December timeframe).

Neither the Special Revenue Funds (205) or the Lunch Account (210) were reviewed. This was because the person in the Business Office who normally works on these accounts has been out sick for several days.

The Scholarship Fund (300) balance increased \$294.70 from \$128,464.88 (8/31) => \$128,759.58 (9/30).

Mrs. Jackie Norcel made a motion to accept the Financial Report and forward it to the Board of Education. The motion was seconded by Mr. Scot Kerr. The Committee voted unanimously to forward the Report to the Board of Education.

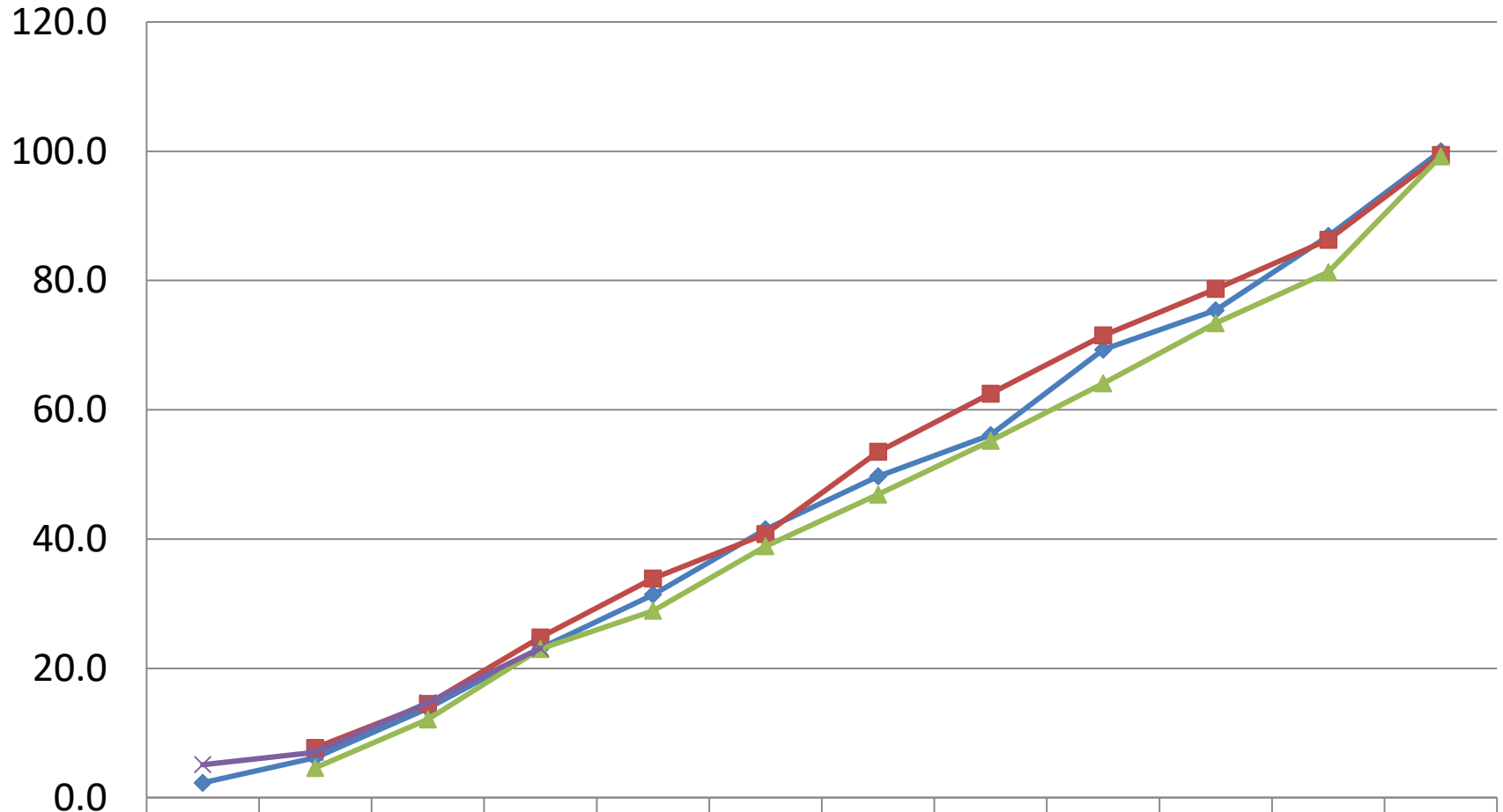
The meeting was adjourned at 5:06 pm.

Respectfully submitted,

Paul Hendrickson

DRAFT

# Cumulative Total Board of Education Budget % By Month



	J	A	S	O	N	D	J	F	M	A	M	J
2018-19	2.3	6.2	13.8	23.1	31.4	41.5	49.7	56.1	69.3	75.4	86.9	100.0
2019-20		7.7	14.5	24.8	33.9	40.8	53.5	62.5	71.5	78.7	86.3	99.4
2020-21		4.6	12.1	23.0	28.9	38.9	46.9	55.2	64.1	73.4	81.3	99.2
2021-22	5.1	7.0	14.7	23.1								

◆ 2018-19   
 ■ 2019-20   
 ▲ 2020-21   
 × 2021-22

11/12/2021 14:24  
1791pbri

TRUMBULL BOE, CT  
YEAR-TO-DATE BUDGET REPORT

P 1  
glytdbud

FOR 2022 04

	ORIGINAL APPROP	TRANFRS/ ADJSTMTS	REVISED BUDGET	YTD EXPENDED	ENCUMBRANCES	AVAILABLE BUDGET	PCT USED
001 BOE GENERAL FUND	112,296,658	0	112,296,658	25,932,884.68	83,203,252.91	3,160,520.41	97.2%
009 TOWN ACCOUNTS FUND	0	1,257,428	1,257,428	174,595.52	968,519.05	114,313.43	90.9%
200 GRANTS FUND	0	3,524,917	3,524,917	729,002.44	2,366,095.11	429,819.85	87.8%
205 SPECIAL REVENUE FUND	0	315,185	315,185	494,896.15	893,318.93	-1,073,030.36	440.4%
210 SCHOOL LUNCH FUND	0	2,591,926	2,591,926	768,699.68	1,635,075.63	188,150.69	92.7%

GRAND TOTAL 112,296,658 7,689,456 119,986,114 28,100,078.47 89,066,261.63 2,819,774.02 97.6%

\*\* END OF REPORT - Generated by Peg Brindisi \*\*

**Trumbull Board of Education Expense vs Budget Summary**  
**Report for the Period Ended 10/31/2021**

<u>Object Description</u>	<u>Code</u>	<u>Revised</u>	<u>Expended</u>	<u>Committed/ Estimates</u>	<u>Available/ (Over)</u>	<u>% Spent or Committed</u>
<b><u>Salaries</u></b>	<b><u>100</u></b>					
Admin/Supervisors		\$4,672,445	\$1,605,703	\$3,072,868	(\$6,126)	100%
Teachers		\$54,603,505	\$8,756,447	\$44,901,699	\$945,359	98%
Custodians/Maintenance		\$3,712,660	\$1,162,153	\$2,438,515	\$111,993	97%
Tech Support		\$534,412	\$166,293	\$311,689	\$56,431	89%
Admin Support		\$2,710,804	\$808,075	\$1,876,570	\$26,160	99%
Paras & Aides		\$4,369,946	\$1,024,872	\$3,648,017	(\$302,943)	107%
Substitutes		\$872,435	\$182,685	\$689,750	\$0	100%
Coaches & Advisors		\$695,045	\$11,836	\$683,209	\$0	100%
Salaries Other		\$1,584,765	\$303,018	\$1,082,057	\$199,689	87%
Misc Salary Items		\$308,668	\$191,241	\$0	\$117,427	62%
<b>Salaries Total</b>		<b>\$74,064,685</b>	<b>\$14,212,323</b>	<b>\$58,704,374</b>	<b>\$1,147,989</b>	<b>98%</b>
<b><u>Employee Benefits</u></b>	<b><u>200</u></b>					
Health Insurance		\$16,201,647	\$5,302,581	\$10,784,814	\$114,252	99%
FICA		\$1,882,323	\$422,808	\$1,459,515	\$0	100%
Other Insurance		\$336,501	\$108,955	\$222,406	\$5,140	98%
Unemployment		\$130,000	\$1,779	\$128,220	\$1	100%
Benefits Other		\$193,595	\$62,811	\$124,815	\$5,969	97%
<b>Employee Benefits Total</b>		<b>\$18,744,066</b>	<b>\$5,898,934</b>	<b>\$12,719,770</b>	<b>\$125,362</b>	<b>99%</b>
<b><u>Purchased Professional Services</u></b>	<b><u>300</u></b>					
Legal		\$260,000	\$30,356	\$220,544	\$9,100	97%
Service Contracts		\$415,087	\$298,563	\$30,809	\$85,715	79%
Consultants		\$225,000	\$88,260	\$313,714	(\$176,974)	179%
Other Prof Services		\$459,900	\$157,355	\$197,608	\$104,937	77%
<b>Purchased Professional Services Total</b>		<b>\$1,359,987</b>	<b>\$574,533</b>	<b>\$762,675</b>	<b>\$22,779</b>	<b>98%</b>
<b><u>Purchased Property Services</u></b>	<b><u>400</u></b>					
Utilities		\$1,289,000	\$323,180	\$959,635	\$6,185	100%
Repairs & Svc Fees		\$348,500	\$146,514	\$152,428	\$49,559	86%
Copiers		\$265,000	\$61,793	\$189,187	\$14,020	95%
Other Purch'd Property Svcs		\$111,900	\$34,984	\$76,540	\$376	100%
<b>Purchased Property Services Total</b>		<b>\$2,014,400</b>	<b>\$566,471</b>	<b>\$1,377,790</b>	<b>\$70,139</b>	<b>97%</b>
<b><u>Purchased Other Services</u></b>	<b><u>500</u></b>					
Transportation		\$6,152,707	\$1,010,435	\$5,058,230	\$84,042	99%
Communications		\$275,250	\$93,585	\$188,320	(\$6,656)	102%
Postage		\$40,000	\$9,814	\$36,187	(\$6,001)	115%
Advertising		\$1,200	\$1,992	\$0	(\$792)	166%
Interns		\$296,400	\$15,000	\$0	\$281,400	5%
Tuition		\$4,750,000	\$1,660,020	\$2,629,105	\$460,875	90%
Printing		\$14,950	\$1,142	\$950	\$12,858	14%
Other Purch'd Svcs		\$323,352	\$128,604	\$5,203	\$189,545	41%
<b>Purchased Other Services Total</b>		<b>\$11,853,859</b>	<b>\$2,920,592</b>	<b>\$7,917,995</b>	<b>\$1,015,272</b>	<b>91%</b>
<b><u>Supplies</u></b>	<b><u>600</u></b>					
Supplies-Teaching		\$601,227	\$188,059	\$103,282	\$309,886	48%
Supplies-Office		\$101,550	\$26,901	\$19,799	\$54,850	46%
Supplies-Custodial		\$175,000	\$59,817	\$118,114	(\$2,931)	102%
Supplies-Maintenance		\$284,000	\$62,476	\$74,430	\$147,094	48%
Text & Workbooks		\$407,266	\$107,945	\$40,293	\$259,028	36%
Subscriptions		\$315,545	\$265,925	\$1,708	\$47,912	85%
Testing Materials		\$134,600	\$53,866	\$30,649	\$50,086	63%
Books & A/V		\$44,040	\$11,239	\$9,129	\$23,673	46%
Software		\$119,000	\$130,598	(\$0)	(\$11,598)	110%

**Trumbull Board of Education Expense vs Budget Summary**  
**Report for the Period Ended 10/31/2021**

<u>Object Description</u>	<u>Code</u>	<u>Revised</u>	<u>Expended</u>	<u>Committed/ Estimates</u>	<u>Available/ (Over)</u>	<u>% Spent or Committed</u>
Energy		\$435,000	\$41,932	\$393,068	\$0	100%
Other Supplies		\$31,650	\$3,262	\$10,530	\$17,858	44%
	<b>Supplies Total</b>	<b>\$2,648,878</b>	<b>\$952,021</b>	<b>\$801,001</b>	<b>\$895,857</b>	<b>66%</b>
 <b><u>Property</u></b>	 <b><u>700</u></b>					
Office Equipment		\$850	\$0	\$0	\$850	0%
Office Furniture		\$1,200	\$810	\$810	(\$420)	135%
Classroom Equipment		\$409,131	\$255,940	\$223,286	(\$70,096)	117%
Classroom Furniture		\$11,500	\$4,631	\$4,517	\$2,351	80%
Bldg Equipment		\$148,492	\$45,418	\$207,167	(\$104,093)	170%
Bldg Improvements		\$158,489	\$38,660	\$75,090	\$44,739	72%
Other Equipment		\$3,500	\$676	\$0	\$2,824	19%
	<b>Property Total</b>	<b>\$733,162</b>	<b>\$346,136</b>	<b>\$510,871</b>	<b>(\$123,845)</b>	<b>117%</b>
 <b><u>Debt Service &amp; Miscellaneous</u></b>	 <b><u>800</u></b>					
Dues, Fees and Memberships		\$876,621	\$461,875	\$408,777	\$5,968	99%
Other Objects		\$1,000	\$0	\$0	\$1,000	0%
	<b>Miscellaneous Total</b>	<b>\$877,621</b>	<b>\$461,875</b>	<b>\$408,777</b>	<b>\$6,968</b>	<b>99%</b>
 <b><u>Other Objects</u></b>	 <b><u>917</u></b>					
Other-Ant Surpl/Excess Cst		\$0	\$0	\$0	\$0	#DIV/0!
	<b>Other Objects Total</b>	<b>\$0</b>	<b>\$0</b>	<b>\$0</b>	<b>\$0</b>	<b>#DIV/0!</b>
<b>Munis Report Total</b>		<b>\$112,296,658</b>	<b>\$25,932,885</b>	<b>\$83,203,253</b>	<b>\$3,160,520</b>	<b>97%</b>

Trumbull Board of Education Expense vs Budget Detail  
Report for the Period Ended 10/31/2021

Account #	Account Description	Budget			Expended	Committed/ Estimates	Available/ (Over)
		Original	Transfers	Revised			
Salaries							
Admin/Supervisors							
01011000-51113	TECEC-Admin-Admin Salaries	\$121,360	\$0	\$121,360	\$42,009	\$79,351	\$0
01011200-51114	PPS-Admin-Director/Coordinator	\$309,071	\$0	\$309,071	\$106,986	\$202,085	\$0
01402320-51114	Asst Super-Admin-Asst Superintendent	\$130,000	\$0	\$130,000	\$23,000	\$85,000	\$22,000
01412210-51113	D/W-Elem Asst Principal	\$0	\$0	\$0	\$0	\$0	\$0
01412210-51114	Curr Dir-Admin-Director	\$193,000	\$0	\$193,000	\$68,262	\$128,939	(\$4,200)
01422520-51125	Tech-Admin-Manager	\$132,575	\$0	\$132,575	\$45,891	\$86,684	(\$0)
01512400-51113	BHES-Admin-Principal	\$178,449	\$0	\$178,449	\$61,771	\$116,678	\$0
01522400-51113	FTES-Admin-Principal/Asst Principal	\$178,449	\$0	\$178,449	\$61,771	\$116,678	\$0
01532400-51113	DFES-Admin-Princiapl	\$178,449	\$0	\$178,449	\$61,771	\$116,678	\$0
01542400-51113	MBES-Admin-Principal	\$178,449	\$0	\$178,449	\$61,771	\$116,678	\$0
01552400-51113	JRES-Admin-Principal	\$162,865	\$0	\$162,865	\$56,376	\$106,489	(\$0)
01582400-51113	TSES-Admin-Principal	\$178,449	\$0	\$178,449	\$61,771	\$116,678	\$0
01612400-51113	HMS-Admin-Principal/Asst Principal	\$335,544	\$0	\$335,544	\$116,150	\$219,394	(\$0)
01622400-51113	MMS-Admin-Principal/Asst Principal	\$343,331	\$0	\$343,331	\$118,845	\$224,486	(\$0)
01711006-51114	THS-Ag Science-Director	\$77,124	\$0	\$77,124	\$27,387	\$51,730	(\$1,993)
01711019-51114	Sports-Sports General-Director	\$164,882	\$0	\$164,882	\$57,075	\$107,808	(\$0)
01712400-51113	THS-Admin-Principals	\$842,283	\$0	\$842,283	\$291,559	\$550,723	\$0
01741200-51113	Continuing Ed-Admin-Administrator	\$0	\$0	\$0	\$0	\$0	\$0
01822230-51113	Facilities-Administrator	\$0	\$0	\$0	\$19,890	\$0	(\$19,890)
01822230-51125	Facilities-Admin-Director/Managers	\$242,997	\$0	\$242,997	\$65,114	\$158,883	\$19,000
01822230-51141	Facilities-Admin-Manager OT	\$0	\$0	\$0	\$0	\$0	\$0
01882700-51125	Trans-Admin-Manager	\$67,969	\$0	\$67,969	\$24,817	\$46,876	(\$3,724)
01902320-51115	Super-Admin-Superintendent	\$248,750	\$0	\$248,750	\$90,927	\$171,752	(\$13,929)
01912520-51113	Bus Off-Admin-Business Administrator	\$169,500	\$0	\$169,500	\$59,847	\$113,044	(\$3,390)
01912520-51129	Bus Off-Admin-Acctg Manager	\$85,182	\$0	\$85,182	\$29,486	\$55,696	\$0
01922530-51125	Asst Super-Dir Digital Learning	\$153,767	\$0	\$153,767	\$53,227	\$100,540	(\$0)
	Admin/Supervisors Total	\$4,672,445	\$0	\$4,672,445	\$1,605,703	\$3,072,868	(\$6,126)
Teachers							
01802320-51119	Super-Personnel-Teacher Xtra Time	\$11,998	\$0	\$11,998	\$2,690	\$0	\$9,308
01402320-51116	Asst Super-Admin-Teacher Stipends	\$0	\$0	\$0	\$0	\$0	\$0
01402320-51118	Asst Super-L/W-Prof Devt Prep	\$0	\$0	\$0	\$0	\$0	\$0
01402320-51200	Asst Super-Admin-Teacher Mentors	\$5,000	\$0	\$5,000	\$0	\$0	\$5,000
01402210-51110	Curr Dir-D/W-ELL Teachers	\$586,408	\$0	\$586,408	\$91,960	\$463,818	\$30,630
01411250-51110	Curr Dir-D/W-TAG Teachers	\$114,478	\$0	\$114,478	\$17,612	\$96,866	\$0
01412210-51111	Curr Dir-D/W-Program Leaders	\$378,442	\$0	\$378,442	\$73,873	\$304,568	\$0
01412210-51117	Curr Dir-D/W-Teacher Training	\$50,000	\$0	\$50,000	\$0	\$0	\$50,000
01412210-51118	Curr Dir-D/W-Prof Devt Prep	\$30,000	\$0	\$30,000	\$17,232	\$0	\$12,768
01412210-51119	Curr Dir-Admin-Curriculum Writing	\$80,104	\$0	\$80,104	\$35,637	\$0	\$44,467
01912520-51196	D/W-Admin-Retirement/LOA Savings	\$0	\$0	\$0	\$0	\$0	\$0
01912520-51197	D/W-Admin-Degree Changes	\$70,000	\$0	\$70,000	\$0	\$0	\$70,000
01011200-51118	PPS-L/W-Curriculum Writing	\$20,000	\$0	\$20,000	\$0	\$0	\$20,000
01011200-51119	PPS-L/W-Teacher Xtra Time	\$24,000	\$0	\$24,000	\$11,448	\$0	\$12,552
01021201-51119	PPS-After School-Teacher Salaries	\$0	\$0	\$0	\$0	\$0	\$0
01062140-51111	PPS-L/W-Psychologists	\$1,989,018	\$0	\$1,989,018	\$316,466	\$1,684,614	(\$12,061)
01072110-51111	PPS-L/W-Social Workers	\$1,285,959	\$0	\$1,285,959	\$182,764	\$983,978	\$119,217
01082150-51111	PPS-L/W-Speech & Language	\$1,358,551	\$0	\$1,358,551	\$212,269	\$1,112,847	\$33,435
01161200-51110	PPS-SPED-Elementary Teachers	\$1,822,829	\$0	\$1,822,829	\$297,993	\$1,550,160	(\$25,324)
01231200-51110	PPS-SPED-Middle School Teachers	\$1,262,530	\$0	\$1,262,530	\$196,510	\$1,169,038	(\$103,019)
01331200-51110	PPS-SPED-THS Teachers	\$1,973,517	\$0	\$1,973,517	\$307,728	\$1,682,589	(\$16,800)
01371200-51118	PPS-ESY-Teacher salaries	\$133,000	\$0	\$133,000	\$146,974	\$0	(\$13,974)
01011000-51110	TECEC-Classroom-Teachers	\$662,244	\$0	\$662,244	\$99,095	\$540,881	\$22,268
01121200-51111	TECEC-Classroom-Specialists	\$110,000	\$0	\$110,000	\$27,178	\$136,287	(\$53,465)
01511001-51110	BHES-Classroom-Teachers	\$2,167,873	\$0	\$2,167,873	\$341,534	\$1,857,750	(\$31,411)
01511002-51110	BHES-Classroom-Specialists	\$394,182	\$0	\$394,182	\$84,596	\$508,297	(\$198,711)
01512220-51110	BHES Library-Teachers-Salaries	\$93,385	\$0	\$93,385	\$14,367	\$79,018	\$0
01521001-51110	FTES-Classroom-Teachers	\$2,585,110	\$0	\$2,585,110	\$388,164	\$2,028,377	\$168,569
01521002-51110	FTES-Classroom-Specialists	\$889,845	\$0	\$889,845	\$124,674	\$667,947	\$97,224
01522220-51110	FTES Library-Teachers-Salaries	\$105,496	\$0	\$105,496	\$16,230	\$89,266	(\$0)
01531001-51110	DFES-Classroom-Teachers	\$2,402,500	\$0	\$2,402,500	\$351,934	\$1,935,635	\$114,932
01531002-51110	DFES-Classroom-Specialists	\$551,263	\$0	\$551,263	\$100,227	\$496,580	(\$45,544)
01532220-51110	DFES Library-Teachers-Salaries	\$80,442	\$0	\$80,442	\$12,376	\$68,066	\$0
01541001-51110	MBES-Classroom-Teachers	\$2,402,936	\$0	\$2,402,936	\$358,912	\$1,961,966	\$82,058
01541002-51110	MBES-Classroom-Specialists	\$812,223	\$0	\$812,223	\$129,372	\$663,993	\$18,859
01542220-51110	MBES Library-Teachers-Salaries	\$114,478	\$0	\$114,478	\$17,612	\$96,866	\$0
01551001-51110	JRES-Classroom-Teachers	\$1,957,727	\$0	\$1,957,727	\$299,984	\$1,614,931	\$42,812



Trumbull Board of Education Expense vs Budget Detail  
Report for the Period Ended 10/31/2021

Account #	Account Description	Budget			Expended	Committed/ Estimates	Available/ (Over)
		Original	Transfers	Revised			
01551002-51110	JRES-Classroom-Specialists	\$477,992	\$0	\$477,992	\$97,219	\$484,949	(\$104,176)
01552220-51110	JRES Library-Teachers-Salaries	\$114,478	\$0	\$114,478	\$17,612	\$96,866	\$0
01581001-51110	TES-Classroom-Teachers	\$1,798,582	\$0	\$1,798,582	\$276,209	\$1,479,345	\$43,028
01581002-51110	TES-Classroom-Specialists	\$420,582	\$0	\$420,582	\$89,758	\$464,013	(\$133,190)
01582220-51110	TES Library-Teachers-Salaries	\$88,060	\$0	\$88,060	\$13,548	\$74,512	\$0
01611001-51110	HMS-Classroom-Teacher Salaries	\$3,969,616	\$0	\$3,969,616	\$568,177	\$3,082,714	\$318,725
01611016-51110	HMS-Music-Teacher Salaries	\$337,268	\$0	\$337,268	\$54,271	\$273,372	\$9,625
01611019-51110	HMS-PE/Health-Teacher Salaries	\$390,096	\$0	\$390,096	\$63,149	\$326,947	\$1
01612120-51110	HMS-Guidance-Teacher Salaries	\$286,244	\$0	\$286,244	\$55,148	\$231,095	\$0
01612220-51110	HMS-Library-Teacher Salaries	\$99,033	\$0	\$99,033	\$15,236	\$83,797	\$0
01612400-51110	HMS-Admin-Teacher Xtra days	\$0	\$0	\$0	\$0	\$0	\$0
01621001-51110	MMS-Classroom-Teacher Salaries	\$4,239,485	\$0	\$4,239,485	\$663,104	\$3,568,228	\$8,153
01621016-51110	MMS-Music-Teacher Salaries	\$318,661	\$0	\$318,661	\$49,480	\$247,025	\$22,156
01621019-51110	MMS-PE/Health-Teacher Salaries	\$399,307	\$0	\$399,307	\$70,047	\$335,020	(\$5,760)
01622120-51110	MMS-Guidance-Teacher Salaries	\$317,719	\$0	\$317,719	\$59,991	\$257,728	\$0
01622220-51110	MMS-Library-Teacher Salaries	\$104,176	\$0	\$104,176	\$16,027	\$88,149	(\$0)
01622400-51110	MMS-Admin-Teacher Xtra days	\$2,366	\$0	\$2,366	\$0	\$0	\$2,366
01711001-51110	THS-Classroom-Teacher Salaries	\$11,004,604	\$0	\$11,004,604	\$1,717,833	\$9,117,202	\$169,569
01711003-51110	THS-Admin-Detention Duty	\$3,000	\$0	\$3,000	\$655	\$0	\$2,345
01711006-51110	THS-Ag Science-Teachers Salaries	\$590,970	\$0	\$590,970	\$130,445	\$460,525	\$1
01711016-51110	THS-Music-Teacher Salaries	\$458,728	\$0	\$458,728	\$50,810	\$260,582	\$147,336
01711019-51110	THS-PE/Health-Teacher Salaries	\$854,514	\$0	\$854,514	\$133,189	\$710,635	\$10,690
01711022-51110	THS-Alternate School-Teachers Salaries	\$398,956	\$0	\$398,956	\$63,137	\$332,811	\$3,008
01711028-51110	THS-Admin-Teacher Xtra Time	\$0	\$0	\$0	\$0	\$0	\$0
01712120-51110	THS-Guidance-Teacher Salaries	\$1,318,017	\$0	\$1,318,017	\$260,835	\$1,057,182	(\$0)
01712220-51110	THS-Library-Teacher Salaries	\$85,513	\$0	\$85,513	\$13,156	\$74,664	(\$2,307)
<b>Teachers Total</b>		<b>\$54,603,505</b>	<b>\$0</b>	<b>\$54,603,505</b>	<b>\$8,756,447</b>	<b>\$44,901,699</b>	<b>\$945,359</b>

**Custodians/Maintenance**

01842610-51140	Facilities-Custodial-Salaries	\$2,719,708	\$0	\$2,719,708	\$792,127	\$1,921,240	\$6,341
01842610-51141	Facilities-Custodial-Custodial OT	\$51,410	\$0	\$51,410	\$50,058	\$0	\$1,352
01842610-51142	Facilities-Custodial-School OT	\$74,545	\$0	\$74,545	\$28,752	\$0	\$45,793
01842610-51143	Facilities-Snow Removal-Salaries	\$20,000	\$0	\$20,000	\$0	\$0	\$20,000
01842610-51145	Facilities-Custodial- Custodial Support	\$6,698	\$0	\$6,698	\$2,493	\$0	\$4,205
01842610-51149	Facilities-Custodial-Custodial Night Diff	\$6,820	\$0	\$6,820	\$1,754	\$0	\$5,066
01852620-51140	Facilities-Maintenance-Salaries	\$769,057	\$0	\$769,057	\$248,108	\$517,275	\$3,674
01852620-51141	Facilities-Maintenance-Maint OT	\$22,848	\$0	\$22,848	\$7,188	\$0	\$15,660
01852620-51142	Facilities-Maintenance-Security Checks	\$574	\$0	\$574	\$0	\$0	\$574
01852620-51145	Facilities-Maintenance-Summer Help	\$41,000	\$0	\$41,000	\$31,673	\$0	\$9,327
<b>Custodians/Maintenance Total</b>		<b>\$3,712,660</b>	<b>\$0</b>	<b>\$3,712,660</b>	<b>\$1,162,153</b>	<b>\$2,438,515</b>	<b>\$111,993</b>

**Tech Support**

01422220-51124	Tech-Dist A/V/Ch 17-Technician	\$39,698	\$0	\$39,698	\$0	\$0	\$39,698
01422520-51129	Tech-Admin-Other Technical	\$479,714	\$0	\$479,714	\$160,860	\$311,689	\$7,166
01422520-51141	Tech-Admin-Xtra Time/Help	\$15,000	\$0	\$15,000	\$5,433	\$0	\$9,567
<b>Tech Support Total</b>		<b>\$534,412</b>	<b>\$0</b>	<b>\$534,412</b>	<b>\$166,293</b>	<b>\$311,689</b>	<b>\$56,431</b>

**Administrative Support**

01011000-51130	TECEC-Admin-Secy 12 Mth	\$0	\$0	\$0	\$0	\$0	\$0
01011000-51131	TECEC-Admin-Secy 10 Mth	\$48,862	\$0	\$48,862	\$9,397	\$39,466	(\$0)
01011000-51135	TECEC-Admin-Clerical Xtra Time	\$0	\$0	\$0	\$11	\$0	(\$11)
01011200-51130	PPS-Admin-Secy 12 Mth	\$121,107	\$0	\$121,107	\$35,506	\$64,509	\$21,092
01011200-51135	PPS-Admin-Clerical Xtra Time	\$0	\$0	\$0	\$822	\$0	(\$822)
01402320-51130	Asst Super-Admin-Secy 12 Mth	\$70,660	\$0	\$70,660	\$25,405	\$46,855	(\$1,600)
01402320-51135	Asst Super-Admin-Clerical Xtra Time	\$0	\$0	\$0	\$0	\$0	\$0
01412210-51130	Curr Dir-Admin-Secy 12 Mth	\$56,607	\$0	\$56,607	\$19,595	\$37,012	(\$0)
01412210-51135	Curr Dir-Admin-Clerical Xtra Time	\$0	\$0	\$0	\$380	\$0	(\$380)
01422520-51130	Tech-Admin-Secy 12 Mth	\$61,786	\$0	\$61,786	\$13,548	\$31,961	\$16,277
01512400-51130	BHES-Admin-Secy 12 Mth	\$61,786	\$0	\$61,786	\$21,387	\$40,398	\$0
01512400-51131	BHES-Admin-Secy 10 Mth	\$39,149	\$0	\$39,149	\$7,529	\$31,620	\$0
01512400-51135	BHES-Admin-Clerical Xtra Time	\$0	\$0	\$0	\$55	\$0	(\$55)
01522400-51130	FTES-Admin-Secy 12 Mth	\$61,786	\$0	\$61,786	\$21,837	\$40,398	(\$450)
01522400-51131	FTES-Admin-Secy 10 Mth	\$40,070	\$0	\$40,070	\$9,507	\$30,963	(\$400)
01522400-51135	FTES-Admin-Clerical Xtra Time	\$0	\$0	\$0	\$293	\$0	(\$293)
01532400-51130	DFES-Admin-Secy 12 Mth	\$61,786	\$0	\$61,786	\$21,987	\$40,398	(\$600)
01532400-51131	DFES-Admin-Secy 10 Mth	\$40,072	\$0	\$40,072	\$7,564	\$31,769	\$738
01532400-51135	DFES-Admin-Clerical Xtra Time	\$0	\$0	\$0	\$506	\$0	(\$506)
01542400-51130	MBES-Admin-Secy 12 Mth	\$61,786	\$0	\$61,786	\$11,668	\$40,398	\$9,720

Trumbull Board of Education Expense vs Budget Detail  
Report for the Period Ended 10/31/2021

Account #	Account Description	Budget			Expended	Committed/ Estimates	Available/ (Over)
		Original	Transfers	Revised			
01542400-51131	MBES-Admin-Secy 10 Mth	\$39,149	\$0	\$39,149	\$5,218	\$24,205	\$9,726
01542400-51135	MBES-Admin-Clerical Xtra Time	\$0	\$0	\$0	\$27	\$0	(\$27)
01552400-51130	JRES-Admin-Secy 12 Mth	\$61,786	\$0	\$61,786	\$21,987	\$40,398	(\$600)
01552400-51131	JRES-Admin-Secy 10 Mth	\$39,703	\$0	\$39,703	\$7,635	\$32,068	(\$0)
01552400-51135	JRES-Admin-Clerical Xtra Time	\$0	\$0	\$0	\$467	\$0	(\$467)
01582400-51130	TES-Admin-Secy 12 Mth	\$61,786	\$0	\$61,786	\$21,387	\$40,398	\$0
01582400-51131	TES-Admin-Secy 10 Mth	\$36,972	\$0	\$36,972	\$7,110	\$29,862	\$0
01582400-51135	TES-Admin-Clerical Xtra Time	\$0	\$0	\$0	\$0	\$0	\$0
01612120-51131	HMS-Guidance-Secy 10 Mth	\$48,862	\$0	\$48,862	\$9,397	\$39,466	(\$0)
01612120-51135	HMS-Guidance-Clerical Xtra Time	\$0	\$0	\$0	\$32	\$0	(\$32)
01612400-51130	HMS-Admin-Secy 12 Mth	\$61,786	\$0	\$61,786	\$21,387	\$40,398	\$0
01612400-51131	HMS-Admin-Secy 10 Mth	\$39,100	\$0	\$39,100	\$7,775	\$32,657	(\$1,332)
01612400-51135	HMS-Admin-Clerical Xtra Time	\$0	\$0	\$0	\$407	\$0	(\$407)
01622120-51131	MMS-Guidance-Secy 10 Mth	\$49,320	\$0	\$49,320	\$9,485	\$39,836	(\$0)
01622120-51135	MMS-Guidance-Clerical Xtra Time	\$0	\$0	\$0	\$43	\$0	(\$43)
01622400-51130	MMS-Admin-Secy 12 Mth	\$61,786	\$0	\$61,786	\$21,387	\$40,398	\$0
01622400-51131	MMS-Admin-Secy 10 Mth	\$48,862	\$0	\$48,862	\$9,397	\$39,466	(\$0)
01622400-51135	MMS-Admin-Clerical Xtra Time	\$0	\$0	\$0	\$5	\$0	(\$5)
01711006-51131	THS-Ag Science-Secy 10 Mths	\$36,992	\$0	\$36,992	\$7,364	\$29,878	(\$250)
01711006-51135	THS-Ag Science-Secy Xtra Time	\$492	\$0	\$492	\$256	\$0	\$236
01712120-51130	THS-Guidance-Secy 12 Mths	\$177,966	\$0	\$177,966	\$61,893	\$116,362	(\$290)
01712120-51135	THS-Guidance-Clerical Xtra Time	\$0	\$0	\$0	\$11	\$0	(\$11)
01712220-51130	THS-Library-Secy 12 Mths	\$0	\$0	\$0	\$2,448	\$19,845	(\$22,294)
01712220-51131	THS-Library-Secy 10 Mths	\$25,682	\$0	\$25,682	\$3,888	\$23,347	(\$1,554)
01712400-51130	THS-Admin-Secy 12 Mth	\$121,107	\$0	\$121,107	\$30,424	\$72,909	\$17,774
01712400-51131	THS-Admin-Secy 10 Mth	\$146,365	\$0	\$146,365	\$29,872	\$116,494	(\$0)
01712400-51135	THS-Admin-Clerical Xtra Time	\$239	\$0	\$239	\$63	\$0	\$176
01711022-51131	THS-Alternate School-Secy 10 Mths	\$0	\$0	\$0	\$0	\$0	\$0
01713201-51131	Sports-Sports General-Secy 10 Mths	\$49,320	\$0	\$49,320	\$11,020	\$38,111	\$189
01713201-51135	Sports-Sports Gen-Clerical Xtra Time	\$3,135	\$0	\$3,135	\$64	\$0	\$3,071
01741200-51130	Continuing Ed-Admin-Secy	\$0	\$0	\$0	\$0	\$0	\$0
01802320-51115	Super-Personnel-Support Staff	\$165,629	\$0	\$165,629	\$58,283	\$108,296	(\$950)
01802320-51131	Super-Personnel-Support Staff-10 Mth	\$44,529	\$0	\$44,529	\$8,563	\$35,966	(\$0)
01802320-51135	Super-Personnel-Clerical Xtra Time	\$1,863	\$0	\$1,863	\$3,039	\$0	(\$1,176)
01822230-51130	Facilities-Admin-Secy 12 Mth	\$125,367	\$0	\$125,367	\$43,996	\$81,971	(\$600)
01822230-51135	Facilities-Admin-Clerical Xtra Time	\$0	\$0	\$0	\$89	\$0	(\$89)
01882700-51130	Trans-Admin-Secy 12 Mth	\$96,886	\$0	\$96,886	\$36,660	\$69,247	(\$9,021)
01882700-51131	Trans-Admin-Secy 10 Mth	\$0	\$0	\$0	\$0	\$0	\$0
01882700-51135	Trans-Admin-Clerical Xtra Time	\$3,890	\$0	\$3,890	\$1,850	\$0	\$2,040
01902310-51136	Super-BOE-Secy-BOE Mtgs	\$4,500	\$0	\$4,500	\$825	\$0	\$3,675
01902320-51130	Super-Admin-Support Staff	\$144,306	\$0	\$144,306	\$54,678	\$101,600	(\$11,972)
01902320-51135	Super-Admin-Clerical Xtra Time	\$0	\$0	\$0	\$52	\$0	(\$52)
01912520-51130	Bus Off-Admin-Support 12 Mth	\$286,467	\$0	\$286,467	\$100,870	\$187,642	(\$2,045)
01912520-51135	Bus Off-Admin-Support-Clerical Xtra Time	\$1,500	\$0	\$1,500	\$1,722	\$0	(\$222)
01922530-51135	Asst Super-Admin-Clerical Xtra Time	\$0	\$0	\$0	\$0	\$0	\$0
Administrative Support Total		\$2,710,804	\$0	\$2,710,804	\$808,075	\$1,876,570	\$26,160

**Paras & Aides**

01011200-51120	PPS-L/W-Instructional Paras	\$1,928,354	\$0	\$1,928,354	\$476,308	\$1,792,610	(\$340,564)
01011200-51121	PPS-D/W-Para Xtra Time	\$200,000	\$0	\$200,000	\$13,870	\$0	\$186,130
01011200-51122	PPS-L/W-ABA Paras	\$1,031,217	\$0	\$1,031,217	\$219,348	\$965,886	(\$154,018)
01032130-51128	PPS-L/W-Health Aides	\$79,259	\$0	\$79,259	\$17,531	\$67,493	(\$5,766)
01371200-51122	PPS-ESY-ABA Paras	\$80,000	\$0	\$80,000	\$80,753	\$0	(\$753)
01371200-51128	PPS-ESY-Health Aides	\$7,000	\$0	\$7,000	\$5,165	\$0	\$1,835
01371200-51129	PPS-ESY-Para	\$47,000	\$0	\$47,000	\$40,638	\$0	\$6,362
01412210-51120	PPS-D/W-Para Training	\$14,250	\$0	\$14,250	\$0	\$14,250	\$0
01011000-51120	TECEC-Classroom-Paras	\$178,158	\$0	\$178,158	\$41,723	\$128,307	\$8,128
01011000-51122	TECEC-Classroom-ABA Paras	\$216,379	\$0	\$216,379	\$49,533	\$188,895	(\$22,049)
01511001-51120	BHES-Classroom-Instructional Aides	\$64,293	\$0	\$64,293	\$5,697	\$58,596	\$0
01512400-51120	BHES-Admin-Paras	\$19,315	\$0	\$19,315	\$3,446	\$15,869	\$0
01521001-51120	FTES-Classroom-Instructional Aides	\$72,014	\$0	\$72,014	\$3,846	\$68,168	\$0
01522400-51120	FTES-Admin-Paras	\$18,278	\$0	\$18,278	\$7,459	\$12,779	(\$1,960)
01531001-51120	DFES-Classroom-Instructional Aides	\$54,539	\$0	\$54,539	\$4,324	\$50,215	\$0
01532400-51120	DFES-Admin-Paras	\$9,443	\$0	\$9,443	\$4,135	\$7,708	(\$2,400)
01541001-51120	MBES-Classroom-Instructional Aides	\$66,429	\$0	\$66,429	\$2,018	\$64,411	\$0
01542400-51120	MBES-Admin-Paras	\$9,655	\$0	\$9,655	\$1,697	\$7,958	\$0
01551001-51120	JRES-Classroom-Instructional Aides	\$46,984	\$0	\$46,984	\$5,268	\$41,716	\$0
01552400-51120	JRES-Admin-Paras	\$10,094	\$0	\$10,094	\$4,207	\$5,887	\$0
01581001-51120	TES-Classroom-Instructional Aides	\$57,299	\$0	\$57,299	\$4,932	\$52,367	\$0
01582400-51120	TES-Admin-Paras	\$9,443	\$0	\$9,443	\$3,691	\$5,752	\$0

Trumbull Board of Education Expense vs Budget Detail  
Report for the Period Ended 10/31/2021

Account #	Account Description	Budget			Expended	Committed/ Estimates	Available/ (Over)
		Original	Transfers	Revised			
01612400-51120	HMS-Admin-Admin Para	\$11,961	\$0	\$11,961	\$2,643	\$9,318	\$0
01612220-51120	HMS-Library-Paras	\$0	\$0	\$0	\$0	\$0	\$0
01622400-51120	MMS-Admin-Admin Para	\$12,504	\$0	\$12,504	\$10,202	\$27,119	(\$24,817)
01622220-51120	MMS-Library-Paras	\$0	\$0	\$0	\$0	\$0	\$0
01712400-51120	THS-L/W-Paras	\$126,078	\$0	\$126,078	\$16,438	\$62,712	\$46,928
	<b>Paras &amp; Aides Total</b>	<b>\$4,369,946</b>	<b>\$0</b>	<b>\$4,369,946</b>	<b>\$1,024,872</b>	<b>\$3,648,017</b>	<b>(\$302,943)</b>
<b>Substitutes</b>							
01802320-51117	Super-Personnel-Substitute Teachers	\$708,209	\$0	\$708,209	\$131,225	\$576,984	\$0
01802320-51129	Super-Personnel-Substitute Paras	\$88,616	\$0	\$88,616	\$27,421	\$61,195	\$0
01802320-51139	Super-Personnel-Substitute Secys	\$14,610	\$0	\$14,610	\$15,559	(\$949)	\$0
01802320-51140	Facilities-Admin-Substitutes	\$61,000	\$0	\$61,000	\$8,480	\$52,520	\$0
	<b>Substitutes Total</b>	<b>\$872,435</b>	<b>\$0</b>	<b>\$872,435</b>	<b>\$182,685</b>	<b>\$689,750</b>	<b>\$0</b>
<b>Coaches &amp; Advisors</b>							
01613202-51116	HMS-Activities-Advisors	\$35,000	\$0	\$35,000	\$0	\$35,000	\$0
01623202-51116	MMS-Activities-Advisors	\$35,000	\$0	\$35,000	\$0	\$35,000	\$0
01711016-51116	THS-Music-Directors	\$18,419	\$0	\$18,419	\$0	\$18,419	\$0
01713202-51116	THS-Activities-Advisors	\$115,000	\$0	\$115,000	\$0	\$115,000	\$0
01713201-51116	Sports-Sports General-Coaches	\$491,626	\$0	\$491,626	\$3,435	\$479,790	\$8,401
01723301-51116	Sports-Baseball-Coaches	\$0	\$0	\$0	\$0	\$0	\$0
01723302-51116	Sports-Basketball-Coaches	\$0	\$0	\$0	\$0	\$0	\$0
01723303-51116	Sports-Field Hockey-Coaches	\$0	\$0	\$0	\$0	\$0	\$0
01723304-51116	Sports-Football-Coaches	\$0	\$0	\$0	\$0	\$0	\$0
01723305-51116	Sports-Ice Hockey-Coaches	\$0	\$0	\$0	\$0	\$0	\$0
01723306-51116	Sports-Lacrosse-Coaches	\$0	\$0	\$0	\$0	\$0	\$0
01723307-51116	Sports-Soccer-Coaches	\$0	\$0	\$0	\$0	\$0	\$0
01723308-51116	Sports-Swimming-Coaches	\$0	\$0	\$0	\$0	\$0	\$0
01723309-51116	Sports-Tennis-Coaches	\$0	\$0	\$0	\$0	\$0	\$0
01723310-51116	Sports-Indoor Track-Coaches	\$0	\$0	\$0	\$0	\$0	\$0
01723311-51116	Sports-Volleyball-Coaches	\$0	\$0	\$0	\$0	\$0	\$0
01723312-51116	Sports-Wrestling-Coaches	\$0	\$0	\$0	\$0	\$0	\$0
01723313-51116	Sports-Outdoor Track-Coaches	\$0	\$0	\$0	\$0	\$0	\$0
01723314-51116	Sports-Softball-Coaches	\$0	\$0	\$0	\$0	\$0	\$0
01723315-51116	Sports-Gymnastics-Coaches	\$0	\$0	\$0	\$0	\$0	\$0
01723316-51116	Sports-Golf-Coaches	\$0	\$0	\$0	\$0	\$0	\$0
01723317-51116	Sports-Cross Country-Coaches	\$0	\$0	\$0	\$0	\$0	\$0
01723318-51116	Sports-Cheerleading-Coaches	\$0	\$0	\$0	\$0	\$0	\$0
01723319-51116	Sports-Weight Training-Coaches	\$0	\$0	\$0	\$8,401	\$0	(\$8,401)
	<b>Coaches Total</b>	<b>\$491,626</b>	<b>\$0</b>	<b>\$491,626</b>	<b>\$11,836</b>	<b>\$479,790</b>	<b>\$0</b>
	<b>Coaches &amp; Advisors Total</b>	<b>\$695,045</b>	<b>\$0</b>	<b>\$695,045</b>	<b>\$11,836</b>	<b>\$683,209</b>	<b>\$0</b>
<b>Salaries Other</b>							
01401201-51117	Asst Super-L/W-Tutors Homebound	\$0	\$0	\$0	\$1,200	\$0	(\$1,200)
01401203-51117	Asst Super-L/W-Tutors Tutorial	\$0	\$0	\$0	\$306	\$0	(\$306)
01401204-51117	Asst Super-L/W-Tutors Expulsions	\$0	\$0	\$0	\$0	\$0	\$0
01011201-51117	PPS-L/W-Tutors Homebound	\$105,738	\$0	\$105,738	\$4,433	\$0	\$101,305
01011203-51117	PPS-L/W-Tutors Tutorial	\$61,684	\$0	\$61,684	\$1,463	\$0	\$60,221
01011204-51117	PPS-L/W-Tutors Expulsions	\$12,668	\$0	\$12,668	\$0	\$0	\$12,668
01922530-51129	Asst Super-Info Svcs-Oth Non-Certified	\$50,000	\$0	\$50,000	\$24,286	\$45,873	(\$20,159)
01412210-51129	Curr Dir-D/W-Other Non-Certified	\$72,978	\$0	\$72,978	\$25,261	\$47,716	\$0
01822230-51127	Facilities-D/W-Security Guards	\$691,118	\$0	\$691,118	\$145,375	\$529,867	\$15,877
01822230-51128	Facilities-D/W-Security Guards OT	\$70,000	\$0	\$70,000	\$15,028	\$0	\$54,972
01882700-51150	Bus Monitors	\$0	\$0	\$0	\$0	\$0	\$0
01032130-51123	PPS-L/W-OT/PT Therapists	\$506,579	\$0	\$506,579	\$83,382	\$458,601	(\$35,405)
01331200-51126	PPS-SPED-Work Experience	\$5,500	\$0	\$5,500	\$920	\$0	\$4,580
01512400-51121	BHES-Admin-Lunch Aides	\$0	\$0	\$0	\$0	\$0	\$0
01522400-51121	FTES-Admin-Lunch Aides	\$0	\$0	\$0	\$0	\$0	\$0
01532400-51121	DFES-Admin-Lunch Aides	\$0	\$0	\$0	\$0	\$0	\$0
01542400-51121	MBES-Admin-Lunch Aides	\$0	\$0	\$0	\$0	\$0	\$0
01552400-51121	JRES-Admin-Lunch Aides	\$0	\$0	\$0	\$0	\$0	\$0
01582400-51121	TES-Admin-Lunch Aides	\$0	\$0	\$0	\$0	\$0	\$0
01711006-51129	THS-Ag Science-Misc Salaries	\$8,500	\$0	\$8,500	\$1,365	\$0	\$7,135
01741200-51110	Continuing Ed-Classroom Instructors	\$0	\$0	\$0	\$0	\$0	\$0
	<b>Salaries Other</b>	<b>\$1,584,765</b>	<b>\$0</b>	<b>\$1,584,765</b>	<b>\$303,018</b>	<b>\$1,082,057</b>	<b>\$199,689</b>

Trumbull Board of Education Expense vs Budget Detail  
Report for the Period Ended 10/31/2021

Account #	Account Description	Budget			Expended	Committed/ Estimates	Available/ (Over)
		Original	Transfers	Revised			
<u>Misc Salary Items</u>							
01912520-51198	D/W-Admin-Retiree Payments	\$283,668	\$0	\$283,668	\$191,241	\$0	\$92,427
01912520-51199	D/W-Admin-Reserve For Negotiations	\$25,000	\$0	\$25,000	\$0	\$0	\$25,000
	Misc Salary Items Total	\$308,668	\$0	\$308,668	\$191,241	\$0	\$117,427
	Salaries Total	\$74,064,685	\$0	\$74,064,685	\$14,212,323	\$58,704,374	\$1,147,989
<u>Employee Benefits</u>							
<u>Health Insurance</u>							
01912520-52002	Benefits-Health & Dental	\$16,201,647	\$0	\$16,201,647	\$6,696,444	\$13,823,556	(\$4,318,353)
01912520-52011	Benefits-Health Premium Share - Medical	\$0	\$0	\$0	(\$1,302,672)	(\$2,881,013)	\$4,183,685
01912520-52012	Benefits-Health Premium Share - Dental	\$0	\$0	\$0	(\$91,191)	(\$157,729)	\$248,920
	Health Insurance Total	\$16,201,647	\$0	\$16,201,647	\$5,302,581	\$10,784,814	\$114,252
<u>FICA</u>							
01912520-52001	Benefits-FICA	\$1,882,323	\$0	\$1,882,323	\$422,808	\$1,459,515	\$0
	FICA	\$1,882,323	\$0	\$1,882,323	\$422,808	\$1,459,515	\$0
<u>Other Insurance</u>							
01912520-52004	Benefits-Disability Insurance	\$20,403	\$0	\$20,403	\$6,490	\$13,850	\$63
01912520-52003	D/W-Admin-Medical Waiver	\$200,983	\$0	\$200,983	\$67,799	\$133,184	\$0
01912520-52005	Benefits-Life Insurance	\$115,115	\$0	\$115,115	\$34,666	\$75,372	\$5,077
	Other Insurance Total	\$336,501	\$0	\$336,501	\$108,955	\$222,406	\$5,140
<u>Unemployment</u>							
01912520-52006	D/W-Admin-Unemployment	\$130,000	\$0	\$130,000	\$1,779	\$128,220	\$1
	Unemployment Total	\$130,000	\$0	\$130,000	\$1,779	\$128,220	\$1
<u>Benefits Other</u>							
01912520-52008	Benefits-Administrative Fees	\$18,821	\$0	\$18,821	\$5,963	\$6,889	\$5,969
01912520-52010	Benefits-TBOE 401a Contribution	\$174,774	\$0	\$174,774	\$56,848	\$117,926	\$0
	Benefits Other Total	\$193,595	\$0	\$193,595	\$62,811	\$124,815	\$5,969
	Employee Benefits Total	\$18,744,066	\$0	\$18,744,066	\$5,898,934	\$12,719,770	\$125,362
<u>Purchased Professional Services</u>							
<u>Legal</u>							
01902310-53308	Super-BOE-Legal-Reg Ed	\$120,000	\$0	\$120,000	\$19,504	\$91,397	\$9,100
01011200-53308	PPS-Admin-Legal SPED	\$140,000	\$0	\$140,000	\$10,853	\$129,148	\$0
	Legal Total	\$260,000	\$0	\$260,000	\$30,356	\$220,544	\$9,100
<u>Service Contracts</u>							
01922530-53302	Asst Super-Info Svcs-Dbase Students	\$172,562	\$0	\$172,562	\$170,713	\$0	\$1,849
01882700-53303	Trans-Admin-Software Support	\$7,000	\$0	\$7,000	\$7,411	\$0	(\$411)
01922530-53301	Bus off-Admin-Prof Purch'd Svcs	\$80,000	\$0	\$80,000	\$80,117	\$0	(\$117)
01422520-53305	Tech-Admin-Maintenance Contracts	\$31,000	\$0	\$31,000	\$8,780	\$0	\$22,220
01011200-53300	PPS-Admin-Prof Purch'd Services	\$69,525	\$0	\$69,525	\$21,188	\$0	\$48,337
01052130-53305	PPS-Health Services-Service Contracts	\$55,000	\$0	\$55,000	\$10,353	\$30,809	\$13,837
	Service Contracts Total	\$415,087	\$0	\$415,087	\$298,563	\$30,809	\$85,715
<u>Consultants</u>							
01011200-53230	PPS-L/W-Consultants	\$225,000	\$0	\$225,000	\$88,260	\$313,714	(\$176,974)
	Consultants Total	\$225,000	\$0	\$225,000	\$88,260	\$313,714	(\$176,974)
<u>Other Professional Services</u>							
01011000-53301	PPS-Police Services	\$0	\$0	\$0	\$0	\$0	\$0
01902310-53300	Super-BOE-Professional Services	\$24,000	\$0	\$24,000	\$21,386	\$1,533	\$1,081
01412210-53300	Curr Dir-D/W-Other Professional Svcs	\$19,000	\$0	\$19,000	\$1,963	\$0	\$17,037
01882700-53300	Transportation-Professional Svcs	\$0	\$0	\$0	\$0	\$0	\$0

Trumbull Board of Education Expense vs Budget Detail  
Report for the Period Ended 10/31/2021

Account #	Account Description	Budget			Expended	Committed/ Estimates	Available/ (Over)
		Original	Transfers	Revised			
01912520-53300	Bus Off-Admin-Professional Svcs	\$500	\$0	\$500	\$0	\$0	\$500
01912520-53310	Bus Off-Admin-Athletic Insurance	\$90,000	\$0	\$90,000	\$92,602	\$0	(\$2,602)
01422214-53300	Tech-L/W-Other Professional Svcs	\$4,800	\$0	\$4,800	\$391	\$665	\$3,744
01422220-53300	Tech-Dist AV/Ch17-Other Prof Svcs	\$4,100	\$0	\$4,100	\$0	\$0	\$4,100
01422520-53300	Tech-Admin-Other Professional Svcs	\$10,600	\$0	\$10,600	\$5,718	\$0	\$4,882
01512400-53301	BH-Police Services	\$0	\$0	\$0	\$0	\$0	\$0
01522400-53301	FT-Police Services	\$0	\$0	\$0	\$0	\$0	\$0
01532400-53301	DF-Police Services	\$0	\$0	\$0	\$0	\$0	\$0
01542400-53301	MB-Police Services	\$0	\$0	\$0	\$0	\$0	\$0
01552400-53301	JR-Police Services	\$0	\$0	\$0	\$0	\$0	\$0
01582400-53301	TA-Police Services	\$0	\$0	\$0	\$0	\$0	\$0
01613202-53301	HMS-Activities-Police	\$700	\$0	\$700	\$296	\$0	\$404
01623202-53301	MMS-Activities-Police	\$700	\$0	\$700	\$296	\$0	\$404
01711016-53300	THS-Music-Other Professional Svcs	\$43,500	\$0	\$43,500	\$16,192	\$0	\$27,308
01712120-53220	THS-Guidance-Career Guidance	\$1,000	\$0	\$1,000	\$100	\$114	\$786
01712400-53301	THS-Admin-Police Services	\$65,000	\$0	\$65,000	\$14,504	\$50,496	\$0
01713201-53300	Sports-Sports General-L-Purch'd Svcs	\$189,000	\$0	\$189,000	\$907	\$144,800	\$43,293
01723301-53300	Sports-Baseball-Purch'd Svcs	\$0	\$0	\$0	\$0	\$0	\$0
01723302-53300	Sports-Basketball-Purch'd Svcs	\$0	\$0	\$0	\$0	\$0	\$0
01723304-53300	Sports-Field Hockey-Purch'd Svcs	\$0	\$0	\$0	\$0	\$0	\$0
01723304-53300	Sports-Football-Purch'd Svcs	\$0	\$0	\$0	\$0	\$0	\$0
01723305-53300	Sports-Ice Hockey-Purch'd Svcs	\$0	\$0	\$0	\$0	\$0	\$0
01723306-53300	Sports-Lacrosse-Purch'd Svcs	\$0	\$0	\$0	\$0	\$0	\$0
01723307-53300	Sports-Soccer-Purch'd Svcs	\$0	\$0	\$0	\$0	\$0	\$0
01723308-53300	Sports-Swimming-Purch'd Svcs	\$0	\$0	\$0	\$0	\$0	\$0
01723312-53300	Sports-Wrestling-Purch'd Svcs	\$0	\$0	\$0	\$0	\$0	\$0
01723315-53300	Sports-Gymnastics-Purch'd Svcs	\$0	\$0	\$0	\$0	\$0	\$0
01723317-53300	Sports-Cross Country-Purch'd Svcs	\$0	\$0	\$0	\$0	\$0	\$0
01723318-53300	Sports-Cheerleading-Purch'd Svcs	\$0	\$0	\$0	\$0	\$0	\$0
01852647-53300	Facilities-Bldg Improvement-Oth Prof Svcs	\$7,000	\$0	\$7,000	\$3,000	\$0	\$4,000
01741200-53300	Continuing Ed-Admin-In Service	\$0	\$0	\$0	\$0	\$0	\$0
	<b>Other Professional Services Total</b>	<b>\$459,900</b>	<b>\$0</b>	<b>\$459,900</b>	<b>\$157,355</b>	<b>\$197,608</b>	<b>\$104,937</b>
	<b>Purchased Professional Services Total</b>	<b>\$1,359,987</b>	<b>\$0</b>	<b>\$1,359,987</b>	<b>\$574,533</b>	<b>\$762,675</b>	<b>\$22,779</b>
<b><u>Purchased Property Services</u></b>							
<b><u>Utilities</u></b>							
01842611-54101	Facilities-D/W-Electricity	\$1,160,000	\$0	\$1,160,000	\$285,748	\$867,417	\$6,835
01842611-54105	Facilities-D/W-Water	\$129,000	\$0	\$129,000	\$37,432	\$92,218	(\$650)
	<b>Utilities Total</b>	<b>\$1,289,000</b>	<b>\$0</b>	<b>\$1,289,000</b>	<b>\$323,180</b>	<b>\$959,635</b>	<b>\$6,185</b>
<b><u>Repairs &amp; Service Fees</u></b>							
01052130-54300	PPS-Health Svcs-Repairs & Svc Fees	\$5,000	\$0	\$5,000	\$0	\$0	\$5,000
01422214-54300	Tech-L/W-Repairs & Svc Fees	\$1,200	\$0	\$1,200	\$0	\$0	\$1,200
01422220-54300	Tech-Dist AV/Ch17-Repairs & Svc Fees	\$500	\$0	\$500	\$0	\$0	\$500
01422520-54300	Tech-Admin-Repairs & Svc Fees	\$1,800	\$0	\$1,800	\$0	\$0	\$1,800
01711006-54300	THS-Ag Science-Repairs & Svc Fees	\$3,000	\$0	\$3,000	\$750	\$0	\$2,250
01842610-54300	Facilities-Custodial-Repairs	\$8,000	\$0	\$8,000	\$329	\$0	\$7,671
01852622-54300	Facilities-Snow Removal-Repairs & Svc Fees	\$20,000	\$0	\$20,000	\$0	\$0	\$20,000
01852623-54300	Facilities-Vehicles-Repairs & Svc Fees	\$14,000	\$0	\$14,000	\$1,465	\$0	\$12,535
01852625-54300	Facilities-Grounds-Repairs & Svc Fees	\$20,000	\$0	\$20,000	\$0	\$0	\$20,000
01852627-54300	Facilities-Lawn Care-Repairs & Svc Fees	\$0	\$0	\$0	\$1,200	\$0	(\$1,200)
01852631-54300	Facilities-Maintenance-Repairs & Svc Fees	\$35,000	\$0	\$35,000	\$5,810	\$45,824	(\$16,634)
01852632-54300	Facilities-Inside Maint-Repairs & Svc Fees	\$15,000	\$0	\$15,000	\$1,940	\$0	\$13,061
01852633-54300	Facilities-Electrical-Repairs & Svc Fees	\$50,000	\$0	\$50,000	\$17,401	\$11,273	\$21,326
01852633-54301	Facilities-Security-Service Contracts	\$0	\$0	\$0	\$0	\$0	\$0
01852634-54300	Facilities-Fire Protection-Repairs & Svc Fees	\$0	\$0	\$0	\$5,492	\$8,942	(\$14,433)
01852635-54300	Facilities-Floor-Repairs & Svc Fees	\$0	\$0	\$0	\$47,793	\$0	(\$47,793)
01852637-54300	Facilities-Glass-Repairs & Svc Fees	\$0	\$0	\$0	\$3,521	\$500	(\$4,021)
01852639-54300	Facilities-HVAC-Repairs & Svc Fees	\$100,000	\$0	\$100,000	\$26,850	\$62,238	\$10,912
01852643-54300	Facilities-Equipment-Repairs & Svc Fees	\$0	\$0	\$0	\$0	\$300	(\$300)
01852644-54300	Facilities-Plumbing-Repairs & Svc Fees	\$10,000	\$0	\$10,000	\$0	\$0	\$10,000
01852645-54300	Facilities-Roofing-Repairs & Svc Fees	\$40,000	\$0	\$40,000	\$22,125	\$5,325	\$12,550
01852646-54300	Facilities-Pest Control-Repairs & Svc Fees	\$0	\$0	\$0	\$3,321	\$6,565	(\$9,886)
01852647-54300	Facilities-Bldg Improve-Repairs & Svc Fees	\$15,000	\$0	\$15,000	\$4,450	\$0	\$10,550
01852648-54300	Facilities-IAQ-Repairs & Svc Fees	\$10,000	\$0	\$10,000	\$4,050	\$11,460	(\$5,510)
01852649-54300	Facilities-Welding-Repairs & Svc Fees	\$0	\$0	\$0	\$20	\$0	(\$20)

Trumbull Board of Education Expense vs Budget Detail  
Report for the Period Ended 10/31/2021

Account #	Account Description	Budget			Expended	Committed/ Estimates	Available/ (Over)
		Original	Transfers	Revised			
	<b>Repairs &amp; Service Fees Total</b>	<b>\$348,500</b>	<b>\$0</b>	<b>\$348,500</b>	<b>\$146,514</b>	<b>\$152,428</b>	<b>\$49,559</b>
<b>Copiers</b>							
01422520-54409	D/W Copiers	\$0	\$0	\$0	\$61,245	\$183,735	(\$244,980)
01902320-54409	D/W-Admin-Copiers	\$265,000	\$0	\$265,000	\$548	\$5,452	\$259,000
	<b>Copiers Total</b>	<b>\$265,000</b>	<b>\$0</b>	<b>\$265,000</b>	<b>\$61,793</b>	<b>\$189,187</b>	<b>\$14,020</b>
<b>Other Purchased Property Services</b>							
01512400-54900	BHES-Admin-Other Purch'd Svcs	\$300	\$0	\$300	\$0	\$0	\$300
01522400-54900	FTES-Admin-Other Purch'd Svcs	\$300	\$0	\$300	\$0	\$0	\$300
01532400-54900	DFES-Admin-Other Purch'd Svcs	\$500	\$0	\$500	\$0	\$0	\$500
01542400-54900	MBES-Admin-Other Purch'd Svcs	\$300	\$0	\$300	\$0	\$0	\$300
01552400-54900	JRES-Admin-Other Purch'd Svcs	\$500	\$0	\$500	\$356	\$0	\$144
01582400-54900	TES-Admin-Other Purch'd Svcs	\$300	\$0	\$300	\$0	\$0	\$300
01611016-54900	HMS-Music-Other Purch'd Property Svcs	\$1,200	\$0	\$1,200	\$140	\$0	\$1,060
01612400-54900	HMS-Classroom-Other Purch'd Svcs	\$1,700	\$0	\$1,700	\$0	\$0	\$1,700
01621016-54900	MMS-Music-Other Purch'd Property Svcs	\$1,200	\$0	\$1,200	\$0	\$0	\$1,200
01622400-54900	MMS-Classroom-Other Purch'd Svcs	\$1,700	\$0	\$1,700	\$21	\$0	\$1,679
01711006-54900	THS-Ag Science-Other Purch'd Prop Svcs	\$3,000	\$0	\$3,000	\$1,185	\$0	\$1,815
01711001-54900	THS-Classroom-Other Purch'd Property Svcs	\$0	\$0	\$0	\$0	\$0	\$0
01711014-54900	THS-Industrial Arts-Other Purch'd Prop Svcs	\$0	\$0	\$0	\$0	\$0	\$0
01711016-54201	THS-Music-Uniform Cleaning	\$1,500	\$0	\$1,500	\$0	\$0	\$1,500
01713201-54200	Sports-Sports General-Cleaning Svcs	\$15,000	\$0	\$15,000	\$236	\$10,689	\$4,075
01842610-54103	Facilities-Custodial-Trash/Recycling	\$50,000	\$0	\$50,000	\$21,771	\$42,826	(\$14,598)
01842610-54202	Facilities-Custodial-Cleaning	\$3,900	\$0	\$3,900	\$1,042	\$2,758	\$100
01852631-54301	Facilities-Maint-Oth Prof Purch'd Svcs	\$30,000	\$0	\$30,000	\$10,233	\$19,767	\$0
01852633-54301	Facilities-Elevator-Oth Prof Purch'd Svcs	\$0	\$0	\$0	\$0	\$500	(\$500)
01882700-54900	Trans-Admin-Purch'd Property Svcs	\$500	\$0	\$500	\$0	\$0	\$500
	<b>Other Purch'd Property Services Total</b>	<b>\$111,900</b>	<b>\$0</b>	<b>\$111,900</b>	<b>\$34,984</b>	<b>\$76,540</b>	<b>\$376</b>
	<b>Purchased Property Services Total</b>	<b>\$2,014,400</b>	<b>\$0</b>	<b>\$2,014,400</b>	<b>\$566,471</b>	<b>\$1,377,790</b>	<b>\$70,139</b>
<b>Purchased Other Services</b>							
<b>Transportation</b>							
01882700-55101	Trans-Admin-Reg Buses	\$3,354,190	\$0	\$3,354,190	\$365,974	\$2,987,216	\$1,000
01882700-55102	Trans-Admin-ACE Trips	\$3,000	\$0	\$3,000	\$0	\$0	\$3,000
01882700-55105	Trans-Admin-SPED-Summer Buses	\$163,200	\$0	\$163,200	\$256,739	\$0	(\$93,539)
01882700-55109	Trans-Admin-Fuel	\$200,000	\$0	\$200,000	\$52,322	\$121,924	\$25,754
01882700-55809	Trans-Admin-Field Trips	\$0	\$0	\$0	\$0	\$9,000	(\$9,000)
01882701-55101	Trans-Admin-SPED In District	\$1,265,675	\$0	\$1,265,675	\$166,262	\$1,099,413	\$0
01882701-55105	Trans-Admin-SPED Out of District	\$721,900	\$0	\$721,900	\$134,041	\$585,833	\$2,027
01882701-55108	Trans-Admin-Monitors	\$254,113	\$0	\$254,113	\$23,245	\$230,868	\$0
01711006-55809	THS-Ag Science-Transportation	\$2,629	\$0	\$2,629	\$0	\$0	\$2,629
01711016-55809	THS-Music-Transportation	\$15,000	\$0	\$15,000	\$828	\$0	\$14,172
01711022-55809	THS-Alternate School-Field Trips	\$1,000	\$0	\$1,000	\$0	\$0	\$1,000
01713202-55807	THS-Activities-Competitions	\$45,000	\$0	\$45,000	\$0	\$0	\$45,000
01713201-55809	THS-Activities-Sports	\$127,000	\$0	\$127,000	\$11,025	\$23,975	\$92,000
01723301-55809	Sports-Baseball-Buses	\$0	\$0	\$0	\$0	\$0	\$0
01723302-55809	Sports-Basketball-Buses	\$0	\$0	\$0	\$0	\$0	\$0
01723303-55809	Sports-Field Hockey-Buses	\$0	\$0	\$0	\$0	\$0	\$0
01723304-55809	Sports-Football-Buses	\$0	\$0	\$0	\$0	\$0	\$0
01723305-55809	Sports-Ice Hockey-Buses	\$0	\$0	\$0	\$0	\$0	\$0
01723306-55809	Sports-Lacrosse-Buses	\$0	\$0	\$0	\$0	\$0	\$0
01723307-55809	Sports-Soccer-Buses	\$0	\$0	\$0	\$0	\$0	\$0
01723308-55809	Sports-Swimming-Buses	\$0	\$0	\$0	\$0	\$0	\$0
01723309-55809	Sports-Tennis-Buses	\$0	\$0	\$0	\$0	\$0	\$0
01723310-55809	Sports-Indoor Track-Buses	\$0	\$0	\$0	\$0	\$0	\$0
01723311-55809	Sports-Volleyball-Buses	\$0	\$0	\$0	\$0	\$0	\$0
01723312-55809	Sports-Wrestling-Buses	\$0	\$0	\$0	\$0	\$0	\$0
01723313-55809	Sports-Outdoor Track-Buses	\$0	\$0	\$0	\$0	\$0	\$0
01723314-55809	Sports-Softball-Buses	\$0	\$0	\$0	\$0	\$0	\$0
01723315-55809	Sports-Gymnastics-Buses	\$0	\$0	\$0	\$0	\$0	\$0
01723316-55809	Sports-Golf-Buses	\$0	\$0	\$0	\$0	\$0	\$0
01723317-55809	Sports-Cross Country-Buses	\$0	\$0	\$0	\$0	\$0	\$0
01723318-55809	Sports-Cheerleading-Buses	\$0	\$0	\$0	\$0	\$0	\$0
	<b>Sports Transportation Total</b>	<b>\$127,000</b>	<b>\$0</b>	<b>\$127,000</b>	<b>\$11,025</b>	<b>\$23,975</b>	<b>\$92,000</b>

Trumbull Board of Education Expense vs Budget Detail  
Report for the Period Ended 10/31/2021

Account #	Account Description	Budget			Expended	Committed/ Estimates	Available/ (Over)
		Original	Transfers	Revised			
	<b>Transportation Total</b>	<b>\$6,152,707</b>	<b>\$0</b>	<b>\$6,152,707</b>	<b>\$1,010,435</b>	<b>\$5,058,230</b>	<b>\$84,042</b>
<b><u>Communications</u></b>							
01422520-55903	Tech-Admin-Telephone Cell	\$32,000	\$0	\$32,000	\$8,441	\$24,985	(\$1,426)
01422520-55904	Tech-Admin-Telephone LAN	\$88,000	\$0	\$88,000	\$16,947	\$75,645	(\$4,592)
01422520-55907	Tech-Admin-WAN Communications	\$155,250	\$0	\$155,250	\$68,198	\$87,690	(\$638)
	<b>Communications Total</b>	<b>\$275,250</b>	<b>\$0</b>	<b>\$275,250</b>	<b>\$93,585</b>	<b>\$188,320</b>	<b>(\$6,656)</b>
<b><u>Postage</u></b>							
01902320-55900	Super-Admin-Postage	\$40,000	\$0	\$40,000	\$9,814	\$36,187	(\$6,001)
	<b>Postage Total</b>	<b>\$40,000</b>	<b>\$0</b>	<b>\$40,000</b>	<b>\$9,814</b>	<b>\$36,187</b>	<b>(\$6,001)</b>
<b><u>Advertising</u></b>							
01912520-55903	Bus Off-Admin-Advertising	\$1,200	\$0	\$1,200	\$1,992	\$0	(\$792)
	<b>Advertising Total</b>	<b>\$1,200</b>	<b>\$0</b>	<b>\$1,200</b>	<b>\$1,992</b>	<b>\$0</b>	<b>(\$792)</b>
<b><u>Interns</u></b>							
01401000-55503	TECEC-Classroom-Interns	\$0	\$0	\$0	\$0	\$0	\$0
01511001-55500	BHES-Classroom-Interns	\$31,200	\$0	\$31,200	\$0	\$0	\$31,200
01521001-55500	FTES-Classroom-Interns	\$31,200	\$0	\$31,200	\$0	\$0	\$31,200
01531001-55500	DFES-Classroom-Interns	\$31,200	\$0	\$31,200	\$0	\$0	\$31,200
01541001-55500	MBES-Classroom-Interns	\$31,200	\$0	\$31,200	\$0	\$0	\$31,200
01551001-55500	JRES-Classroom-Interns	\$31,200	\$0	\$31,200	\$0	\$0	\$31,200
01581001-55500	TES-Classroom-Interns	\$31,200	\$0	\$31,200	\$0	\$0	\$31,200
01611001-55500	HMS-Classroom-Interns	\$31,200	\$0	\$31,200	\$0	\$0	\$31,200
01621001-55500	MMS-Classroom-Interns	\$31,200	\$0	\$31,200	\$0	\$0	\$31,200
01401000-55502	THS-Classroom-Interns	\$46,800	\$0	\$46,800	\$15,000	\$0	\$31,800
	<b>Interns Total</b>	<b>\$296,400</b>	<b>\$0</b>	<b>\$296,400</b>	<b>\$15,000</b>	<b>\$0</b>	<b>\$281,400</b>
<b><u>Tuition</u></b>							
01402320-55600	Asst Super-Admin-Tuition	\$450,000	\$0	\$450,000	\$69,554	\$354,644	\$25,803
01396110-55600	PPS-L/W-Tuition Outplaced	\$5,300,000	\$0	\$5,300,000	\$1,590,467	\$3,274,461	\$435,072
01396110-55601	PPS-EXCESS COST REFUND(ECR)	(\$1,000,000)	\$0	(\$1,000,000)	\$0	(\$1,000,000)	\$0
	<b>Tuition Total</b>	<b>\$4,750,000</b>	<b>\$0</b>	<b>\$4,750,000</b>	<b>\$1,660,020</b>	<b>\$2,629,105</b>	<b>\$460,875</b>
<b><u>Printing</u></b>							
01902320-55905	Super-Admin-Printing	\$1,500	\$0	\$1,500	\$0	\$0	\$1,500
01402320-55906	Asst Super-Admin-Printing	\$1,500	\$0	\$1,500	\$1,142	\$0	\$358
01412210-55906	Curr Dir-Admin-Printing	\$0	\$0	\$0	\$0	\$0	\$0
01011200-55906	PPS-Admin-Printing	\$500	\$0	\$500	\$0	\$0	\$500
01011000-55906	TECEC-Admin-Printing	\$200	\$0	\$200	\$0	\$0	\$200
01612400-55906	HMS-Classroom-Printing	\$0	\$0	\$0	\$0	\$0	\$0
01622400-55906	MMS-Classroom-Printing	\$0	\$0	\$0	\$0	\$0	\$0
01711006-55906	THS-Ag Science-Printing	\$1,500	\$0	\$1,500	\$0	\$950	\$550
01712400-55906	THS-Admin-Printing	\$9,000	\$0	\$9,000	\$0	\$0	\$9,000
01713202-55906	THS-Activities-Printing	\$750	\$0	\$750	\$0	\$0	\$750
	<b>Printing Total</b>	<b>\$14,950</b>	<b>\$0</b>	<b>\$14,950</b>	<b>\$1,142</b>	<b>\$950</b>	<b>\$12,858</b>
<b><u>Other Purch'd Services</u></b>							
01011000-55800	TECEC-Admin-Professional Devt	\$700	\$0	\$700	\$0	\$0	\$700
01011000-55900	TECEC-Admin-Other Purch'd Prop Svcs	\$500	\$0	\$500	\$0	\$0	\$500
01011200-55800	PPS-Admin-Professional Devt	\$30,000	\$0	\$30,000	\$4,308	\$0	\$25,692
01011200-55801	PPS-D/W-Mileage	\$15,000	\$0	\$15,000	\$946	\$0	\$14,054
01401203-55801	Asst Super-L/W-Mileage	\$20,000	\$0	\$20,000	\$714	\$0	\$19,286
01402320-55800	Asst Super-Admin-Professional Devt	\$20,000	\$0	\$20,000	\$0	\$0	\$20,000
01412210-55800	Curr Dir-Admin-Professional Devt	\$80,000	\$0	\$80,000	\$37,416	\$3,333	\$39,250
01412210-55802	Admin-Prof Devt Admin	\$0	\$0	\$0	(\$12)	\$0	\$12
01422520-55800	Tech-Admin-Professional Devt	\$2,850	\$0	\$2,850	\$0	\$0	\$2,850
01422520-55804	Tech-Admin-Mileage	\$4,200	\$0	\$4,200	\$490	\$0	\$3,710
01512400-55800	BHES-Admin-Professional Devt	\$500	\$0	\$500	\$0	\$0	\$500
01522400-55800	FTES-Admin-Professional Devt	\$500	\$0	\$500	\$0	\$0	\$500
01532400-55800	DFES-Admin-Professional Devt	\$500	\$0	\$500	\$0	\$0	\$500
01542400-55800	MBES-Admin-Professional Devt	\$500	\$0	\$500	\$0	\$0	\$500

Trumbull Board of Education Expense vs Budget Detail  
Report for the Period Ended 10/31/2021

Account #	Account Description	Budget			Expended	Committed/ Estimates	Available/ (Over)
		Original	Transfers	Revised			
01552400-55800	JRES-Admin-Professional Devt	\$500	\$0	\$500	\$0	\$0	\$500
01582400-55800	TES-Admin-Professional Devt	\$500	\$0	\$500	\$0	\$297	\$203
01612400-55800	HMS-Admin-Professional Devt	\$1,000	\$0	\$1,000	\$0	\$225	\$775
01622400-55800	MMS-Admin-Professional Devt	\$1,000	\$0	\$1,000	\$0	\$150	\$850
01711001-55800	THS-Classroom-Professional Devt	\$0	\$0	\$0	\$0	\$0	\$0
01711011-55800	THS-Foreign Lang-Professional Devt	\$0	\$0	\$0	\$0	\$0	\$0
01712400-55800	THS-Admin-Professional Devt	\$2,000	\$0	\$2,000	\$900	\$199	\$901
01712400-55901	THS-Admin-Other Purch'd Svcs	\$2,000	\$0	\$2,000	\$177	\$0	\$1,823
01741200-55800	Continuing Ed-Admin-Professional Devt	\$0	\$0	\$0	\$0	\$0	\$0
01741200-55900	Continuing Ed-Other Purch'd Svcs	\$40,000	\$0	\$40,000	\$40,000	\$0	\$0
01802130-55900	Super-Personnel-Other Purch'd Svcs	\$61,702	\$0	\$61,702	\$26,903	\$0	\$34,799
01802320-55800	Super-Personnel-Professional Devt	\$0	\$0	\$0	\$0	\$0	\$0
01822230-55800	Facilities-Admin-Professional Devt	\$2,500	\$0	\$2,500	\$381	\$0	\$2,119
01822230-55910	Facilities-Admin-Other Purch'd Svcs	\$20,900	\$0	\$20,900	\$13,279	\$0	\$7,621
01842610-55803	Facilities-Admin-Mileage	\$2,600	\$0	\$2,600	\$364	\$0	\$2,236
01852632-55910	Facilities-Inside Maint-Other Purch'd Svcs	\$1,500	\$0	\$1,500	\$0	\$0	\$1,500
01882700-55800	Trans-Admin-Professional Devt	\$0	\$0	\$0	\$0	\$0	\$0
01902310-55800	Super-BOE-Professional Devt	\$1,400	\$0	\$1,400	\$0	\$0	\$1,400
01902320-55800	Super-Admin-Professional Devt	\$4,500	\$0	\$4,500	\$2,737	\$0	\$1,763
01912520-55800	Bus Off-Admin-Professional Devt	\$0	\$0	\$0	\$0	\$0	\$0
01922530-55804	Asst Super-Info Svcs-Oth Purch Svcs	\$6,000	\$0	\$6,000	\$0	\$999	\$5,001
	<b>Other Purch'd Services Total</b>	<b>\$323,352</b>	<b>\$0</b>	<b>\$323,352</b>	<b>\$128,604</b>	<b>\$5,203</b>	<b>\$189,545</b>
	<b>Purchased Other Services Total</b>	<b>\$11,853,859</b>	<b>\$0</b>	<b>\$11,853,859</b>	<b>\$2,920,592</b>	<b>\$7,917,995</b>	<b>\$1,015,272</b>

Supplies

Supplies Teaching

01412214-56111	Curr Dir-D/W-Classroom Supplies	\$100,000	\$0	\$100,000	\$5,254	\$5,415	\$89,331
01011200-56111	PPS-Classroom-Classroom Supplies	\$30,000	\$0	\$30,000	\$3,433	\$3,103	\$23,464
01011000-56111	TECEC-Classroom-Classroom Supplies	\$6,000	\$0	\$6,000	\$1,629	\$576	\$3,796
01511001-56111	BHES-Classroom Supplies	\$23,000	\$0	\$23,000	\$15,780	\$1,906	\$5,314
01512220-56901	BHES-Library-Supplies	\$2,568	\$0	\$2,568	\$1,224	\$542	\$802
01521001-56111	FTES-Classroom Supplies	\$29,000	\$0	\$29,000	\$12,826	\$6,688	\$9,485
01522220-56901	FTES-Library-Supplies	\$2,500	\$0	\$2,500	\$119	\$955	\$1,426
01531001-56111	DFES-Classroom Supplies	\$30,000	\$0	\$30,000	\$25,925	\$4,559	(\$484)
01532220-56901	DFES-Library-Supplies	\$2,500	\$0	\$2,500	\$0	\$218	\$2,282
01541001-56111	MBES-Classroom Supplies	\$28,000	\$0	\$28,000	\$18,338	\$5,252	\$4,410
01542220-56901	MBES-Library-Supplies	\$2,500	\$0	\$2,500	\$719	\$0	\$1,781
01551001-56111	JRES-Classroom Supplies	\$25,000	\$0	\$25,000	\$13,041	\$4,684	\$7,275
01552220-56901	JRES-Library-Supplies	\$2,500	\$0	\$2,500	\$0	\$1,449	\$1,051
01581001-56111	TES-Classroom Supplies	\$25,000	\$0	\$25,000	\$11,737	\$1,529	\$11,734
01582220-56901	TES-Library-Supplies	\$2,500	\$0	\$2,500	\$1,864	\$296	\$340
01611001-56111	HMS-Classroom-Classroom Supplies	\$32,059	\$0	\$32,059	\$17,951	\$4,297	\$9,811
01611016-56111	HMS-Music-Classroom Supplies	\$2,500	\$0	\$2,500	\$429	\$304	\$1,766
01611019-56111	HMS-PE/Health-Classroom Supplies	\$2,000	\$0	\$2,000	\$0	\$800	\$1,200
01612220-56111	HMS-Library-Supplies	\$1,900	\$0	\$1,900	\$49	\$0	\$1,851
01621001-56111	MMS-Classroom-Classroom Supplies	\$35,000	\$0	\$35,000	\$19,570	\$1,624	\$13,806
01621016-56111	MMS-Music-Classroom Supplies	\$2,500	\$0	\$2,500	\$0	\$272	\$2,228
01621019-56111	MMS-PE/Health-Classroom Supplies	\$2,000	\$0	\$2,000	\$1,558	\$218	\$224
01622220-56901	MMS-Library-Supplies	\$2,000	\$0	\$2,000	\$725	\$390	\$885
01711001-56111	THS-Classroom-Classroom Supplies	\$35,000	\$0	\$35,000	\$7,121	\$0	\$27,879
01711002-56112	THS-Art-Supplies	\$18,000	\$0	\$18,000	\$1,056	\$4,634	\$12,311
01711003-56112	THS-Business Ed-Supplies	\$1,100	\$0	\$1,100	\$579	\$0	\$521
01711006-56112	THS-Ag Science-Supplies	\$31,000	\$0	\$31,000	\$3,636	\$15,466	\$11,899
01711010-56112	THS-Language Arts-Supplies	\$2,005	\$0	\$2,005	\$444	\$0	\$1,561
01711011-56112	THS-Foreign Language-Supplies	\$1,750	\$0	\$1,750	\$0	\$0	\$1,750
01711013-56112	THS-Home Economics-Supplies	\$13,500	\$0	\$13,500	\$1,478	\$269	\$11,753
01711014-56112	THS-Industrial Arts-Supplies	\$14,000	\$0	\$14,000	\$2,612	\$3,756	\$7,632
01711015-56112	THS-Mathematics-Supplies	\$2,015	\$0	\$2,015	\$627	\$246	\$1,142
01711016-56112	THS-Music-Supplies	\$5,900	\$0	\$5,900	\$851	\$950	\$4,099
01711019-56112	THS-PE/Health-Supplies	\$3,000	\$0	\$3,000	\$980	\$0	\$2,020
01711022-56112	THS-Alternate School-Supplies	\$500	\$0	\$500	\$0	\$0	\$500
01711027-56112	THS-Science-Supplies	\$12,000	\$0	\$12,000	\$0	\$687	\$11,313
01711028-56112	THS-Social Studies-Supplies	\$830	\$0	\$830	\$220	\$0	\$610
01712120-56112	THS-Guidance-Supplies	\$600	\$0	\$600	\$0	\$0	\$600
01712220-56901	THS-Library-Supplies	\$3,000	\$0	\$3,000	\$0	\$0	\$3,000
01712221-56112	THS-Audio Visual-Supplies	\$0	\$0	\$0	\$0	\$0	\$0
01712400-56116	THS-Admin-Supplies	\$1,000	\$0	\$1,000	\$1,005	\$304	(\$310)



Trumbull Board of Education Expense vs Budget Detail  
Report for the Period Ended 10/31/2021

Account #	Account Description	Budget			Expended	Committed/ Estimates	Available/ (Over)
		Original	Transfers	Revised			
01713201-56112	Sports-Sports General-Supplies	\$65,000	\$0	\$65,000	\$15,279	\$31,894	\$17,827
01723301-56112	Sports-Baseball-Supplies	\$0	\$0	\$0	\$0	\$0	\$0
01723302-56112	Sports-Basketball-Supplies	\$0	\$0	\$0	\$0	\$0	\$0
01723303-56112	Sports-Field Hockey-Supplies	\$0	\$0	\$0	\$0	\$0	\$0
01723304-56112	Sports-Football-Supplies	\$0	\$0	\$0	\$0	\$0	\$0
01723305-56112	Sports-Ice Hockey-Supplies	\$0	\$0	\$0	\$0	\$0	\$0
01723306-56112	Sports-Lacrosse-Supplies	\$0	\$0	\$0	\$0	\$0	\$0
01723307-56112	Sports-Soccer-Supplies	\$0	\$0	\$0	\$0	\$0	\$0
01723309-56112	Sports-Tennis-Supplies	\$0	\$0	\$0	\$0	\$0	\$0
01723311-56112	Sports-Volleyball-Supplies	\$0	\$0	\$0	\$0	\$0	\$0
01723312-56112	Sports-Wrestling-Supplies	\$0	\$0	\$0	\$0	\$0	\$0
01723313-56112	Sports-Outdoor Track-Supplies	\$0	\$0	\$0	\$0	\$0	\$0
01723314-56112	Sports-Softball-Supplies	\$0	\$0	\$0	\$0	\$0	\$0
01723316-56112	Sports-Golf-Supplies	\$0	\$0	\$0	\$0	\$0	\$0
01723317-56112	Sports-Cross Country-Supplies	\$0	\$0	\$0	\$0	\$0	\$0
01723318-56112	Sports-Cheerleading-Supplies	\$0	\$0	\$0	\$0	\$0	\$0
	<b>Sports Supplies Total</b>	<b>\$65,000</b>	<b>\$0</b>	<b>\$65,000</b>	<b>\$15,279</b>	<b>\$31,894</b>	<b>\$17,827</b>
01741200-56110	Continuing Ed-Teaching Supplies	\$0	\$0	\$0	\$0	\$0	\$0
	<b>Supplies Teaching Total</b>	<b>\$601,227</b>	<b>\$0</b>	<b>\$601,227</b>	<b>\$188,059</b>	<b>\$103,282</b>	<b>\$309,886</b>
<b><u>Supplies Office</u></b>							
01902320-56110	Super-Admin-Office Supplies	\$5,000	\$0	\$5,000	\$2,195	\$3,226	(\$421)
01422214-56900	Tech-L/W-Parts	\$12,500	\$0	\$12,500	\$7,259	\$3,870	\$1,371
01422520-56900	Tech-Admin-Parts	\$5,700	\$0	\$5,700	\$300	\$0	\$5,400
01402320-56110	Asst Super-Admin-Office Supplies	\$4,000	\$0	\$4,000	\$566	\$0	\$3,434
01412210-56110	Curr Dir-Admin-Office Supplies	\$0	\$0	\$0	\$48	\$0	(\$48)
01912520-56110	Bus Off-Admin-Office Supplies	\$9,000	\$0	\$9,000	\$2,039	\$3,615	\$3,346
01422520-56110	Tech-Admin-Office Supplies	\$1,250	\$0	\$1,250	\$1,068	\$120	\$63
01822230-56110	Facilities-Admin-Office Supplies	\$6,300	\$0	\$6,300	\$288	\$384	\$5,629
01011200-56110	PPS-Admin-Office Supplies	\$1,000	\$0	\$1,000	\$348	\$0	\$652
01011000-56110	TECEC-Admin-Office Supplies	\$4,800	\$0	\$4,800	\$289	\$246	\$4,265
01052130-56110	PPS-Health Services-Supplies	\$6,500	\$0	\$6,500	\$2,330	\$3,819	\$351
01512400-56110	BHES-Admin-Office Supplies	\$4,000	\$0	\$4,000	\$842	\$46	\$3,112
01522400-56110	FTES-Admin-Office Supplies	\$4,000	\$0	\$4,000	\$741	\$0	\$3,259
01532400-56110	DFES-Admin-Office Supplies	\$4,000	\$0	\$4,000	\$1,755	\$1,069	\$1,177
01542400-56110	MBES-Admin-Office Supplies	\$4,000	\$0	\$4,000	\$1,681	\$1,046	\$1,274
01552400-56110	JRES-Admin-Office Supplies	\$4,000	\$0	\$4,000	\$1,802	\$292	\$1,906
01582400-56110	TES-Admin-Office Supplies	\$4,000	\$0	\$4,000	\$1,046	\$0	\$2,954
01612400-56110	HMS-Admin-Office Supplies	\$7,000	\$0	\$7,000	\$325	\$0	\$6,675
01622400-56110	MMS-Admin-Office Supplies	\$8,000	\$0	\$8,000	\$1,282	\$360	\$6,358
01712400-56110	THS-Admin-Office Supplies	\$4,000	\$0	\$4,000	\$699	\$963	\$2,338
01712221-56900	THS-Audio Visual-Parts & Maintenance	\$2,500	\$0	\$2,500	\$0	\$0	\$2,500
01741200-56117	Continuing Ed-Office Supplies	\$0	\$0	\$0	\$0	\$0	\$0
01882700-56110	Transportation-Office Supplies	\$0	\$0	\$0	\$0	\$746	(\$746)
	<b>Supplies Office Total</b>	<b>\$101,550</b>	<b>\$0</b>	<b>\$101,550</b>	<b>\$26,901</b>	<b>\$19,799</b>	<b>\$54,850</b>
<b><u>Supplies Custodial</u></b>							
01842610-56130	Facilities-Custodial-Supplies	\$175,000	\$0	\$175,000	\$59,817	\$118,114	(\$2,931)
	<b>Supplies Custodial Total</b>	<b>\$175,000</b>	<b>\$0</b>	<b>\$175,000</b>	<b>\$59,817</b>	<b>\$118,114</b>	<b>(\$2,931)</b>
<b><u>Supplies Maintenance</u></b>							
01852622-56134	Facilities-Snow Removal-Supplies	\$9,000	\$0	\$9,000	\$0	\$50	\$8,950
01852623-56134	Facilities-Vehicles-Supplies	\$15,000	\$0	\$15,000	\$3,836	\$4,653	\$6,511
01852625-56134	Facilities-Grounds-Supplies	\$35,000	\$0	\$35,000	\$10,082	\$849	\$24,068
01852627-56134	Facilities-Lawn Care-Supplies	\$0	\$0	\$0	\$2,857	\$58	(\$2,915)
01852631-56134	Facilities-Maintenance-Supplies	\$2,000	\$0	\$2,000	\$242	\$250	\$1,508
01852632-56134	Facilities-Inside Maintenance-Supplies	\$30,000	\$0	\$30,000	\$4,609	\$9,720	\$15,671
01852633-56134	Facilities-Electrical-Supplies	\$55,000	\$0	\$55,000	\$7,139	\$15,622	\$32,239
01852635-56134	Facilities-Floor Repair-Supplies	\$0	\$0	\$0	\$864	\$720	(\$1,584)
01852637-56134	Facilities-Glass-Supplies	\$0	\$0	\$0	\$967	\$0	(\$967)
01852638-56134	Facilities-Hardware-Supplies	\$0	\$0	\$0	\$798	\$1,599	(\$2,398)
01852639-56134	Facilities-HVAC-Supplies	\$55,000	\$0	\$55,000	\$6,991	\$18,284	\$29,725
01852642-56134	Facilities-Painting-Supplies	\$0	\$0	\$0	\$1,104	\$2,836	(\$3,941)
01852644-56134	Facilities-Plumbing-Supplies	\$36,000	\$0	\$36,000	\$7,852	\$14,727	\$13,420
01852645-56134	Facilities-Roofing-Supplies	\$5,000	\$0	\$5,000	\$0	\$0	\$5,000
01852646-56134	Facilities-Pest Control-Supplies	\$0	\$0	\$0	\$64	\$0	(\$64)
01852648-56134	Facilities-Indoor Air Quality-IAQ-Supplies	\$10,000	\$0	\$10,000	\$4,734	\$4,811	\$455

Trumbull Board of Education Expense vs Budget Detail  
Report for the Period Ended 10/31/2021

Account #	Account Description	Budget			Expended	Committed/ Estimates	Available/ (Over)
		Original	Transfers	Revised			
01852649-56134	Facilities-Welding-Supplies	\$0	\$0	\$0	\$108	\$250	(\$358)
01852623-56133	Facilities-Vehicles-Gas/Diesel	\$32,000	\$0	\$32,000	\$10,228	\$0	\$21,772
	<b>Supplies Maintenance Total</b>	<b>\$284,000</b>	<b>\$0</b>	<b>\$284,000</b>	<b>\$62,476</b>	<b>\$74,430</b>	<b>\$147,094</b>
<b><u>Text &amp; Workbooks</u></b>							
01011000-56411	TECEC-Classroom-Text & Workbooks	\$1,000	\$0	\$1,000	\$0	\$0	\$1,000
01011200-56411	PPS-Admin-Text & Workbooks	\$4,300	\$0	\$4,300	\$190	\$0	\$4,110
01412210-56411	Curr Dir-D/W-Text & Workbooks	\$130,000	\$0	\$130,000	\$22,952	\$4,995	\$102,053
01511001-56411	BHES-Classroom-Text & Workbooks	\$29,000	\$0	\$29,000	\$25,587	\$4,997	(\$1,585)
01521001-56411	FTES-Classroom-Text & Workbooks	\$29,000	\$0	\$29,000	\$2,471	\$8,308	\$18,221
01531001-56411	DFES-Classroom-Text & Workbooks	\$29,000	\$0	\$29,000	\$9,795	\$4,319	\$14,886
01541001-56411	MBES-Classroom-Text & Workbooks	\$29,000	\$0	\$29,000	\$4,603	\$11,999	\$12,397
01551001-56411	JRES-Classroom-Text & Workbooks	\$26,000	\$0	\$26,000	\$5,901	\$3,102	\$16,997
01581001-56411	TES-Classroom-Text & Workbooks	\$29,000	\$0	\$29,000	\$7,879	\$1,871	\$19,250
01611001-56411	HMS-Classroom-Text & Workbooks	\$13,000	\$0	\$13,000	\$2,029	\$350	\$10,621
01621001-56411	MMS-Classroom-Text & Workbooks	\$13,000	\$0	\$13,000	\$1,600	\$260	\$11,140
01621016-56411	MMS-Music-Text & Workbooks	\$0	\$0	\$0	\$0	\$0	\$0
01711003-56411	THS-Business Ed-Text & Workbooks	\$8,000	\$0	\$8,000	\$3,885	\$0	\$4,115
01711006-56411	THS-Ag Science-Text & Workbooks	\$4,000	\$0	\$4,000	\$0	\$0	\$4,000
01711010-56411	THS-Language Arts-Text & Workbooks	\$18,000	\$0	\$18,000	\$1	\$0	\$18,000
01711011-56411	THS-Foreign Language-Text & Workbooks	\$11,516	\$0	\$11,516	\$10,461	(\$0)	\$1,055
01711013-56411	THS-Home Economics-Text & Workbooks	\$3,800	\$0	\$3,800	\$0	\$0	\$3,800
01711015-56411	THS-Mathematics-Text & Workbooks	\$9,000	\$0	\$9,000	\$4,589	\$91	\$4,320
01711019-56411	THS-PE/Health-Text & Workbooks	\$500	\$0	\$500	\$0	\$0	\$500
01711022-56411	THS-Alternate School-Text & Workbooks	\$0	\$0	\$0	\$0	\$0	\$0
01711027-56411	THS-Science-Text & Workbooks	\$9,800	\$0	\$9,800	\$225	\$0	\$9,575
01711028-56411	THS-Social Studies-Text & Workbooks	\$10,350	\$0	\$10,350	\$5,778	(\$0)	\$4,572
01741200-56411	Continuing Ed-Textbooks	\$0	\$0	\$0	\$0	\$0	\$0
	<b>Text &amp; Workbooks Total</b>	<b>\$407,266</b>	<b>\$0</b>	<b>\$407,266</b>	<b>\$107,945</b>	<b>\$40,293</b>	<b>\$259,028</b>
<b><u>Subscriptions</u></b>							
01902310-56425	Super-BOE-Periodicals	\$0	\$0	\$0	\$0	\$0	\$0
01902320-56425	Super- Admin-Periodicals	\$700	\$0	\$700	\$484	\$0	\$216
01412210-56425	Curr Dir-Admin-Periodicals	\$300	\$0	\$300	\$0	\$0	\$300
01412214-56426	Cur Dir-D/W-Online Subscriptions	\$300,000	\$0	\$300,000	\$260,827	\$0	\$39,173
01882700-56425	Trans-Admin-Periodicals	\$0	\$0	\$0	\$0	\$0	\$0
01422520-56425	Tech-Admin-Periodicals	\$200	\$0	\$200	\$86	\$0	\$114
01822230-56425	Facilities-Admin-Periodicals	\$350	\$0	\$350	\$0	\$0	\$350
01011200-56425	PPS-Admin-Periodicals	\$1,000	\$0	\$1,000	\$175	\$0	\$826
01512220-56425	BHES-Library-Periodicals	\$1,245	\$0	\$1,245	\$0	\$0	\$1,245
01522220-56425	FTES-Library-Periodicals	\$1,200	\$0	\$1,200	\$1,200	\$0	\$0
01532220-56425	DFES-Library-Periodicals	\$1,250	\$0	\$1,250	\$0	\$0	\$1,250
01542220-56425	MBES-Library-Periodicals	\$1,200	\$0	\$1,200	\$0	\$0	\$1,200
01552220-56425	JRES-Library-Periodicals	\$1,250	\$0	\$1,250	\$1,245	\$0	\$5
01582220-56425	TES-Library-Periodicals	\$1,250	\$0	\$1,250	\$825	\$0	\$425
01612220-56425	HMS-Library-Periodicals	\$2,000	\$0	\$2,000	\$345	\$1,342	\$313
01622220-56425	MMS-Library-Periodicals	\$1,500	\$0	\$1,500	\$739	\$366	\$395
01712220-56425	THS-Library-Periodicals	\$2,100	\$0	\$2,100	\$0	\$0	\$2,100
01712400-56425	THS-Admin-Periodicals	\$0	\$0	\$0	\$0	\$0	\$0
	<b>Subscriptions Total</b>	<b>\$315,545</b>	<b>\$0</b>	<b>\$315,545</b>	<b>\$265,925</b>	<b>\$1,708</b>	<b>\$47,912</b>
<b><u>Testing Materials</u></b>							
01412210-56904	Curr Dir-D/W-Testing Materials	\$95,000	\$0	\$95,000	\$50,525	\$30,808	\$13,667
01011200-56904	PPS-L/W-Testing Materials	\$37,000	\$0	\$37,000	\$2,329	(\$160)	\$34,830
01011000-56904	TECEC-Classroom-Testing Materials	\$2,000	\$0	\$2,000	\$612	\$0	\$1,388
01712120-56903	THS-Guidance-Testing Materials	\$600	\$0	\$600	\$400	\$0	\$200
	<b>Testing Materials Total</b>	<b>\$134,600</b>	<b>\$0</b>	<b>\$134,600</b>	<b>\$53,866</b>	<b>\$30,649</b>	<b>\$50,086</b>
<b><u>Books &amp; A/V</u></b>							
01512220-56420	BHES-Library-Books & Media	\$8,000	\$0	\$8,000	\$7,585	\$67	\$348
01522220-56420	FTES-Library-Books & Media	\$5,000	\$0	\$5,000	\$233	\$0	\$4,767
01532220-56420	DFES-Library-Books & Media	\$5,000	\$0	\$5,000	\$1,433	\$2,810	\$757
01542220-56420	MBES-Library-Books & Media	\$5,000	\$0	\$5,000	\$1,988	\$0	\$3,013
01552220-56420	JRES-Library-Books & Media	\$5,000	\$0	\$5,000	\$0	\$2,941	\$2,059
01582220-56420	TES-Library-Books & Media	\$5,000	\$0	\$5,000	\$0	\$2,554	\$2,446
01612220-56420	HMS-Library-Books & Media	\$2,000	\$0	\$2,000	\$0	\$0	\$2,000
01622220-56420	MMS-Library-Books & Media	\$2,000	\$0	\$2,000	\$0	\$756	\$1,244

Trumbull Board of Education Expense vs Budget Detail  
Report for the Period Ended 10/31/2021

Account #	Account Description	Budget			Expended	Committed/ Estimates	Available/ (Over)
		Original	Transfers	Revised			
01712220-56420	THS-Library-Books & Media	\$7,040	\$0	\$7,040	\$0	\$0	\$7,040
	<b>Books &amp; A/V Total</b>	<b>\$44,040</b>	<b>\$0</b>	<b>\$44,040</b>	<b>\$11,239</b>	<b>\$9,129</b>	<b>\$23,673</b>
<b>Software</b>							
01412210-56118	Curr Dir-D/W Software	\$5,000	\$0	\$5,000	\$4,583	\$0	\$418
01422214-56118	Tech-L/W-Software	\$114,000	\$0	\$114,000	\$126,016	(\$0)	(\$12,016)
01712120-56118	THS-Guidance-Software	\$0	\$0	\$0	\$0	\$0	\$0
	<b>Software Total</b>	<b>\$119,000</b>	<b>\$0</b>	<b>\$119,000</b>	<b>\$130,598</b>	<b>(\$0)</b>	<b>(\$11,598)</b>
<b>Energy</b>							
01842611-56201	Facilities-D/W-Heating Oil	\$0	\$0	\$0	\$0	\$0	\$0
01842611-56202	Facilities-D/W-Natural Gas	\$435,000	\$0	\$435,000	\$41,932	\$393,068	\$0
	<b>Energy Total</b>	<b>\$435,000</b>	<b>\$0</b>	<b>\$435,000</b>	<b>\$41,932</b>	<b>\$393,068</b>	<b>\$0</b>
<b>Other Supplies</b>							
01422214-56117	Tech-L/W-Computer Supplies	\$850	\$0	\$850	\$0	\$0	\$850
01422220-56117	Tech-Dist AV/Chan 17-Supplies	\$350	\$0	\$350	\$0	\$0	\$350
01422220-56900	Tech-Dist AV/Ch17-Parts	\$6,500	\$0	\$6,500	\$1,642	\$0	\$4,858
01613202-56119	HMS-Activities-Supplies	\$2,500	\$0	\$2,500	\$0	\$0	\$2,500
01623202-56119	MMS-Activities-Supplies	\$2,500	\$0	\$2,500	\$0	\$0	\$2,500
01712400-56270	THS-Admin-Security Supplies	\$1,250	\$0	\$1,250	\$566	\$0	\$684
01712400-56907	THS-Admin-Graduation	\$15,000	\$0	\$15,000	\$0	\$7,700	\$7,300
01713203-56906	THS-Activities-Fees, Awards & Supplies	\$2,700	\$0	\$2,700	\$145	\$0	\$2,555
01852625-56900	Fences/Playground-Supplies	\$0	\$0	\$0	\$909	\$0	(\$909)
01852636-56900	Furniture Repairs-Supplies	\$0	\$0	\$0	\$0	\$2,830	(\$2,830)
01882700-56270	Transportation-Bus Supplies	\$0	\$0	\$0	\$0	\$0	\$0
	<b>Other Supplies Total</b>	<b>\$31,650</b>	<b>\$0</b>	<b>\$31,650</b>	<b>\$3,262</b>	<b>\$10,530</b>	<b>\$17,858</b>
	<b>Supplies Total</b>	<b>\$2,648,878</b>	<b>\$0</b>	<b>\$2,648,878</b>	<b>\$952,021</b>	<b>\$801,001</b>	<b>\$895,857</b>
<b>Property</b>							
<b>Office Equipment</b>							
01822230-57301	Facilities-Admin-Equipment	\$350	\$0	\$350	\$0	\$0	\$350
01612400-57301	HMS-Admin-Equipment	\$500	\$0	\$500	\$0	\$0	\$500
01622400-57301	MMS-Admin-Equipment	\$0	\$0	\$0	\$0	\$0	\$0
	<b>Office Equipment Total</b>	<b>\$850</b>	<b>\$0</b>	<b>\$850</b>	<b>\$0</b>	<b>\$0</b>	<b>\$850</b>
<b>Office Furniture</b>							
01402320-57308	Asst. Super.-Furniture	\$0	\$0	\$0	\$0	\$810	(\$810)
01052130-57304	SPED-Health Services Furniture	\$0	\$0	\$0	\$0	\$0	\$0
01712400-57308	THS-Admin-Office Furniture	\$0	\$0	\$0	\$0	\$0	\$0
01822230-57308	Facilities-Admin-Furniture	\$0	\$0	\$0	\$810	\$0	(\$810)
01852651-57301	Facilities-Building Improvement-Furniture	\$1,200	\$0	\$1,200	\$0	\$0	\$1,200
01902520-57308	Bus Off-Admin-Office Furniture	\$0	\$0	\$0	\$0	\$0	\$0
	<b>Office Furniture Total</b>	<b>\$1,200</b>	<b>\$0</b>	<b>\$1,200</b>	<b>\$810</b>	<b>\$810</b>	<b>(\$420)</b>
<b>Classroom Equipment</b>							
01412210-57301	Curr Dir-D/W-Equipment Instructional	\$10,000	\$0	\$10,000	\$0	\$0	\$10,000
01421001-57310	Tech-Classroom-Computer Equipment	\$233,500	\$0	\$233,500	\$217,466	\$192,040	(\$176,006)
01422214-57301	Tech-L/W-Computer Equipment	\$11,500	\$0	\$11,500	\$4,256	\$519	\$6,725
01422220-57301	Tech-Dist AV/Ch17-Equipment Instructional	\$28,500	\$0	\$28,500	\$9,159	\$11,884	\$7,457
01032130-57303	PPS-L/W-Equipment Instructional	\$11,000	\$0	\$11,000	\$9,469	\$0	\$1,531
01011000-57301	TECEC-Classroom-Instructional Equipment	\$3,000	\$0	\$3,000	\$0	\$0	\$3,000
01511001-57301	BHES-Classroom-Equipment Instructional	\$2,479	\$0	\$2,479	\$0	\$0	\$2,479
01512220-57302	BHES-Library-Equipment Instructional	\$2,214	\$0	\$2,214	\$0	\$0	\$2,214
01521001-57301	FTES-Classroom-Equipment Instructional	\$2,400	\$0	\$2,400	\$907	\$330	\$1,163
01522220-57302	FTES-Library-Equipment Instructional	\$2,300	\$0	\$2,300	\$0	\$257	\$2,043
01531001-57301	DFES-Classroom-Equipment Instructional	\$400	\$0	\$400	\$249	\$0	\$151
01532220-57302	DFES-Library-Equipment Instructional	\$2,400	\$0	\$2,400	\$70	\$0	\$2,330
01541001-57301	MBES-Classroom-Equipment Instructional	\$1,000	\$0	\$1,000	\$0	\$0	\$1,000
01542220-57302	MBES-Library-Equipment Instructional	\$2,200	\$0	\$2,200	\$846	\$0	\$1,354
01551001-57301	JRES-Classroom-Equipment Instructional	\$2,500	\$0	\$2,500	\$0	\$0	\$2,500
01552220-57302	JRES-Library-Equipment Instructional	\$2,200	\$0	\$2,200	\$1,047	\$351	\$802
01581001-57301	TES-Classroom-Equipment Instructional	\$2,500	\$0	\$2,500	\$109	\$0	\$2,391
01582220-57302	TES-Library-Equipment Instructional	\$2,200	\$0	\$2,200	\$0	\$0	\$2,200

Trumbull Board of Education Expense vs Budget Detail  
Report for the Period Ended 10/31/2021

Account #	Account Description	Budget			Expended	Committed/ Estimates	Available/ (Over)
		Original	Transfers	Revised			
01611001-57301	HMS-Classroom-Equipment Instructional	\$3,400	\$0	\$3,400	\$234	\$425	\$2,741
01611016-57301	HMS-Music-Equipment Instructional	\$3,300	\$0	\$3,300	\$1,434	\$1,850	\$16
01612220-57302	HMS-Library-Equipment Instructional	\$1,700	\$0	\$1,700	\$404	\$0	\$1,296
01621001-57301	MMS-Classroom-Equipment Instructional	\$3,400	\$0	\$3,400	\$357	\$76	\$2,967
01621016-57301	MMS-Music-Equipment Instructional	\$3,300	\$0	\$3,300	\$0	\$0	\$3,300
01622220-57302	MMS-Library-Equipment Instructional	\$1,700	\$0	\$1,700	\$215	\$48	\$1,437
01711001-57301	THS-Classroom-Equipment	\$0	\$0	\$0	\$0	\$0	\$0
01711002-57301	THS-Art-Equipment Instructional	\$2,000	\$0	\$2,000	\$0	\$0	\$2,000
01711003-57301	THS-Business Ed-Equipment Instructional	\$0	\$0	\$0	\$0	\$0	\$0
01711006-57301	THS-Ag Science-Equipment Instructional	\$969	\$0	\$969	\$0	\$0	\$969
01711011-57301	THS-Foreign Language-Equipment Instructional	\$6,200	\$0	\$6,200	\$5,976	\$0	\$224
01711013-57301	THS-Home Economics-Equipment Instructional	\$2,500	\$0	\$2,500	\$2,423	\$734	(\$657)
01711014-57301	THS-Industrial Arts-Equipment Instructional	\$800	\$0	\$800	\$0	\$1,300	(\$500)
01711016-57301	THS-Music-Equipment Instructional	\$1,794	\$0	\$1,794	\$1,123	\$0	\$671
01711019-57301	THS-PE/Health-Equipment Instructional	\$2,500	\$0	\$2,500	\$0	\$0	\$2,500
01711027-57301	THS-Science-Equipment Instructional	\$8,500	\$0	\$8,500	\$0	\$2,065	\$6,435
01712220-57302	THS-Library-Equipment Instructional	\$775	\$0	\$775	\$0	\$0	\$775
01712221-57301	THS-Audio Visual-Equipment Instructional	\$4,000	\$0	\$4,000	\$0	\$0	\$4,000
01712400-57301	THS-Admin-Equipment	\$0	\$0	\$0	\$0	\$0	\$0
01713201-57301	Sports-Sports General-Equipment Instructional	\$40,000	\$0	\$40,000	\$197	\$11,407	\$28,396
01723307-57301	Sports-Soccer-Equipment	\$0	\$0	\$0	\$0	\$0	\$0
01723308-57301	Sports-Swimming-Equipment	\$0	\$0	\$0	\$0	\$0	\$0
01723309-57301	Sports-Tennis-Equipment	\$0	\$0	\$0	\$0	\$0	\$0
01723311-57301	Sports-Volleyball-Equipment	\$0	\$0	\$0	\$0	\$0	\$0
01723313-57301	Sports-Outdoor Track-Equipment	\$0	\$0	\$0	\$0	\$0	\$0
01723315-57301	Sports-Gymnastics-Equipment	\$0	\$0	\$0	\$0	\$0	\$0
<b>Classroom Equipment Total</b>		<b>\$409,131</b>	<b>\$0</b>	<b>\$409,131</b>	<b>\$255,940</b>	<b>\$223,286</b>	<b>(\$70,096)</b>
<b><u>Classroom Furniture</u></b>							
01511001-57308	BHES-Classroom-Furniture	\$1,000	\$0	\$1,000	\$751	\$751	(\$501)
01521001-57308	FTES-Classroom-Furniture	\$2,000	\$0	\$2,000	\$0	\$170	\$1,830
01531001-57308	DFES-Classroom-Furniture	\$2,000	\$0	\$2,000	\$1,664	\$2,786	(\$2,449)
01541001-57308	MBES-Classroom-Furniture	\$2,000	\$0	\$2,000	\$872	\$0	\$1,128
01551001-57308	JRES-Classroom-Furniture	\$2,000	\$0	\$2,000	\$695	\$811	\$494
01581001-57308	TES-Classroom-Furniture	\$2,000	\$0	\$2,000	\$650	\$0	\$1,350
01611001-57308	HMS-Classroom-Furniture	\$500	\$0	\$500	\$0	\$0	\$500
01621001-57308	MMS-Classroom-Furniture	\$0	\$0	\$0	\$0	\$0	\$0
<b>Classroom Furniture Total</b>		<b>\$11,500</b>	<b>\$0</b>	<b>\$11,500</b>	<b>\$4,631</b>	<b>\$4,517</b>	<b>\$2,351</b>
<b><u>Building Equipment</u></b>							
01842610-57301	Facilities-Custodial-Equipment	\$5,000	\$0	\$5,000	\$673	\$0	\$4,327
01852622-57307	Facilities-Snow Removal-Equipment	\$5,000	\$0	\$5,000	\$0	\$0	\$5,000
01852623-57307	Facilities-Vehicles-Equipment	\$1,000	\$0	\$1,000	\$777	\$0	\$223
01852625-57307	Facilities-Grounds-Equipment	\$17,000	\$0	\$17,000	\$25,437	\$0	(\$8,437)
01852627-57307	Facilities-Lawn Care-Equipment	\$0	\$0	\$0	\$0	\$11,560	(\$11,560)
01852632-57307	Facilities-Inside Maintenance-Equipment	\$1,000	\$0	\$1,000	\$0	\$0	\$1,000
01852633-57306	FacilitiesPlantBldg-Electrical-Equipment	\$0	\$0	\$0	\$8,304	\$0	(\$8,304)
01852633-57307	Facilities-Electrical-Equipment	\$2,500	\$0	\$2,500	\$185	\$0	\$2,315
01852639-57307	Facilities-HVAC-Equipment	\$25,992	\$0	\$25,992	\$10,042	\$38,800	(\$22,850)
01852644-57307	Facilities-Plumbing-Equipment	\$1,000	\$0	\$1,000	\$0	\$88,422	(\$87,422)
01852648-57307	Facilities-IAQ-Equipment	\$10,000	\$0	\$10,000	\$0	\$0	\$10,000
01852654-57340	Facilities-Maintenance-Vehicle	\$80,000	\$0	\$80,000	\$0	\$68,385	\$11,615
<b>Building Equipment Total</b>		<b>\$148,492</b>	<b>\$0</b>	<b>\$148,492</b>	<b>\$45,418</b>	<b>\$207,167</b>	<b>(\$104,093)</b>
<b><u>Building Improvements</u></b>							
01842611-57202	Facilities-Project Lease Pymts	\$128,489	\$0	\$128,489	\$0	\$0	\$128,489
01852650-57200	Facilities-Site-Building Improvement	\$0	\$0	\$0	\$4,490	\$16,220	(\$20,710)
01852650-57202	Facilities-Site-Building Improvement	\$0	\$0	\$0	\$0	\$0	\$0
01852651-57202	Facilities-Building Improvement-Projects	\$30,000	\$0	\$30,000	\$34,170	\$58,870	(\$63,040)
<b>Building Improvements Total</b>		<b>\$158,489</b>	<b>\$0</b>	<b>\$158,489</b>	<b>\$38,660</b>	<b>\$75,090</b>	<b>\$44,739</b>
<b><u>Other Equipment</u></b>							
01422520-57301	Tech-Admin-WAN Equipment	\$3,500	\$0	\$3,500	\$676	\$0	\$2,824
<b>Other Equipment Total</b>		<b>\$3,500</b>	<b>\$0</b>	<b>\$3,500</b>	<b>\$676</b>	<b>\$0</b>	<b>\$2,824</b>
<b>Property Total</b>		<b>\$733,162</b>	<b>\$0</b>	<b>\$733,162</b>	<b>\$346,136</b>	<b>\$510,871</b>	<b>(\$123,845)</b>

Trumbull Board of Education Expense vs Budget Detail  
Report for the Period Ended 10/31/2021

Account #	Account Description	Budget			Expended	Committed/ Estimates	Available/ (Over)
		Original	Transfers	Revised			
<b>Miscellaneous</b>							
<b>Debt Service, Dues, Fees and Memberships</b>							
01912520-58310	Redemption of Principal on Loans	\$673,494	\$0	\$673,494	\$335,830	\$337,664	\$0
01912520-58320	Interest on Loans	\$120,124	\$0	\$120,124	\$60,979	\$59,145	\$1
01902320-58900	Super-Admin-Dues & Fees	\$13,000	\$0	\$13,000	\$16,914	\$2,400	(\$6,314)
01402210-58900	Instructional-Dues & Fees	\$0	\$0	\$0	\$0	\$0	\$0
01402320-58900	Asst Super-Admin-Dues & Fees	\$7,000	\$0	\$7,000	\$4,094	\$0	\$2,906
01412210-58900	Curr Dir-Admin-Dues & Fees	\$0	\$0	\$0	\$0	\$0	\$0
01882700-58900	Trans-Admin-Dues & Fees	\$375	\$0	\$375	\$0	\$0	\$375
01912520-58900	Bus Off-Admin-Dues & Fees	\$7,000	\$0	\$7,000	\$7,651	\$0	(\$651)
01422520-58900	Tech-Admin-Dues & Fees	\$100	\$0	\$100	\$0	\$0	\$100
01822230-58900	Facilities-Admin-Dues & Fees	\$1,500	\$0	\$1,500	\$390	\$0	\$1,110
01011200-58900	PPS-Admin-Dues & Fees	\$2,000	\$0	\$2,000	\$250	\$0	\$1,750
01011000-58900	TECEC-Admin-Dues & Fees	\$700	\$0	\$700	\$97	\$89	\$514
01512400-58900	BHES-Admin-Dues & Fees	\$553	\$0	\$553	\$0	\$350	\$203
01522400-58900	FTES-Admin-Dues & Fees	\$553	\$0	\$553	\$318	\$0	\$235
01532400-58900	DFES-Admin-Dues & Fees	\$248	\$0	\$248	\$0	\$0	\$248
01542400-58900	MBES-Admin-Dues & Fees	\$250	\$0	\$250	\$0	\$0	\$250
01552400-58900	JRES-Admin-Dues & Fees	\$250	\$0	\$250	\$0	\$0	\$250
01582400-58900	TES-Admin-Dues & Fees	\$550	\$0	\$550	\$311	\$50	\$189
01612400-58900	HMS-Admin-Dues & Fees	\$900	\$0	\$900	\$1,060	\$0	(\$160)
01622400-58900	MMS-Admin-Dues & Fees	\$900	\$0	\$900	\$764	\$0	\$136
01711006-58900	THS-Ag Science-Dues & Fees	\$899	\$0	\$899	\$305	\$0	\$594
01711019-58900	THS-PE/Health-Dues & Fees	\$0	\$0	\$0	\$0	\$0	\$0
01712120-58900	THS-Guidance-Dues & Fees	\$0	\$0	\$0	\$25	\$0	(\$25)
01712220-58900	THS-Library-Dues & Fees	\$0	\$0	\$0	\$0	\$0	\$0
01712400-58900	THS-Admin-Dues & Fees	\$11,225	\$0	\$11,225	\$10,205	\$310	\$710
01713201-58900	Sports-Sports General-Dues & Fees	\$35,000	\$0	\$35,000	\$22,682	\$8,770	\$3,548
01741200-58900	Cont Ed-Admin-Dues & Fees	\$0	\$0	\$0	\$0	\$0	\$0
	Dues, Fees and Memberships Total	\$876,621	\$0	\$876,621	\$461,875	\$408,777	\$5,968
<b>Other Miscellaneous</b>							
01912520-58904	D/W-Admin-Bad Debt Expense	\$1,000	\$0	\$1,000	\$0	\$0	\$1,000
	Other Miscellaneous Total	\$1,000	\$0	\$1,000	\$0	\$0	\$1,000
	Miscellaneous Total	\$877,621	\$0	\$877,621	\$461,875	\$408,777	\$6,968
<b>Other Objects</b>							
01412210-59000	Curr-District Wide Support	\$0	\$0	\$0	\$0	\$0	\$0
01912520-59000	Bus Office-Admin-Anticipated Surplus	\$0	\$0	\$0	\$0	\$0	\$0
01912520-59001	Bus Office-Excess Cost Reim	\$0	\$0	\$0	\$0	\$0	\$0
	Other Objects Total	\$0	\$0	\$0	\$0	\$0	\$0
	Munis Report Total	\$112,296,658	\$0	\$112,296,658	\$25,932,885	\$83,203,253	\$3,160,520

	<b>Trumbull Board of Education</b>				
	<b>Town 009 Accounts</b>				
	<b>7/1/21 to 10/31/21</b>				
<b>Org#</b>	<b>Description</b>	<b>Budget</b>	<b>Expenditures</b>	<b>Encumbrances</b>	<b>Balance</b>
09002611	Electricity	24,000	8,000	-	16,000
09005000	Community Services-Custodian Reg Pay	1,000	-	-	1,000
09005000	Community Services-Custodian OT Pay	80,688	13,038	-	67,650
09005000	Community Services-Custodian OT Pay-COVID	20,500	-	-	20,500
09006001	Non Public Schools - Teachers	100,291	16,585	91,217	(7,511)
09006200	Community Services - HC Pool Employee	59,400	18,584	38,948	1,868
09006200	Community Services - HC Pool Supplies	15,151	421	677	14,053
09007001	Non Public Transportation-Admin	15,270	5,157	9,741	373
09007001	Non Public Transportation-Secretary	15,581	5,262	9,938	381
09007001	Non Public Transportation-Bus Routes	925,547	107,549	817,998	(0)
	<b>Total Town 009 Fund</b>	<b>1,257,428</b>	<b>174,596</b>	<b>968,519</b>	<b>114,313</b>

ACCOUNT ACCOUNT NAME	BEG. BALANCE	DEBITS	CREDITS	NET CHANGE	END BALANCE
100 -00-0000-10410 - SA CASH ACCT - PEOPLES BANK	285,502.32	78,704.67	21,005.92	57,698.75	343,201.07
100 -00-0000-14004 - DUE FROM 205 FUND	44.52	.00	.00	.00	44.52
100 -00-0000-20032 - THS Model Congress	-3,806.75	.00	.00	.00	-3,806.75
100 -00-0000-20068 - MATH HONOR SOCIETY	-1,406.06	.00	.00	.00	-1,406.06
100 -00-0000-20082 - THS ORCHESTRA	-741.60	.00	.00	.00	-741.60
100 -00-0000-20101 - THS LIBRARY CLUB	-3,487.45	.00	.00	.00	-3,487.45
100 -00-0000-20110 - THS Pink Ribbon	-1,357.00	.00	.00	.00	-1,357.00
100 -00-0000-20130 - THS BOOK STORE	-3,199.78	.00	.00	.00	-3,199.78
100 -00-0000-20133 - THS NEWSPAPER	-108.01	.00	.00	.00	-108.01
100 -00-0000-20139 - THS TRILLIUM YEARBOOK	-15,992.39	279.00	.00	279.00	-15,713.39
100 -00-0000-20152 - HILLCREST MIDDLE SCHOOL	-16,670.62	3,346.88	5,522.65	-2,175.77	-18,846.39
100 -00-0000-20156 - MADISON MIDDLE SCHOOL	-5,560.19	400.00	1,077.77	-677.77	-6,237.96
100 -00-0000-20164 - THS Class of 2017	-5,343.71	.00	.00	.00	-5,343.71
100 -00-0000-20165 - THS Class of 2018	-8,098.26	.00	.00	.00	-8,098.26
100 -00-0000-20166 - THS Class of 2019	-2,291.64	.00	.00	.00	-2,291.64
100 -00-0000-20167 - THS Class of 2020	-13,251.30	.00	.00	.00	-13,251.30
100 -00-0000-20168 - THS Class of 2021	-8,009.51	.00	.00	.00	-8,009.51
100 -00-0000-20169 - THS Class of 2022	-4,271.00	1,670.02	56,866.00	-55,195.98	-59,466.98
100 -00-0000-20170 - THS Class of 2023	-1,121.00	.00	.00	.00	-1,121.00
100 -00-0000-20171 - THS Class of 2024	-1,500.00	.00	.00	.00	-1,500.00
100 -00-0000-20172 - THS Class of 2025	-1,000.00	.00	.00	.00	-1,000.00
100 -00-0000-20180 - THS VOAG FUTURE FARMERS	-1,391.69	.00	.00	.00	-1,391.69
100 -00-0000-20190 - THS VOAG FARM	-24,551.15	2,314.55	6,333.00	-4,018.45	-28,569.60
100 -00-0000-20251 - BOOTH HILL SCHOOL	-4,671.49	308.97	245.00	63.97	-4,607.52
100 -00-0000-20252 - FRENCHTOWN SCHOOL	-3,638.15	.00	.00	.00	-3,638.15
100 -00-0000-20253 - DANIELS FARM	-501.57	.00	.00	.00	-501.57
100 -00-0000-20254 -					

ACCOUNT ACCOUNT NAME	BEG. BALANCE	DEBITS	CREDITS	NET CHANGE	END BALANCE
MIDDLEBROOK SCHOOL	-3,991.22	.00	.00	.00	-3,991.22
100 -00-0000-20255 -					
JANE RYAN SCHOOL	-410.83	.00	.00	.00	-410.83
100 -00-0000-20258 -					
TASHUA SCHOOL	-7,901.66	307.80	53.62	254.18	-7,647.48
100 -00-0000-20510 -					
THS STUDENT COUNCIL	-5,371.03	.00	.00	.00	-5,371.03
100 -00-0000-20550 -					
GENERAL FUND	-2,621.64	.00	147.40	-147.40	-2,769.04
100 -00-0000-20599 -					
THS HISTORY HONOR SOCIETY	-470.91	.00	550.00	-550.00	-1,020.91
100 -00-0000-20603 -					
THS DECA (MARKETING EDUCATION)	-8,358.84	5,977.29	4,985.00	992.29	-7,366.55
100 -00-0000-20604 -					
THS BAND	-967.02	.00	.00	.00	-967.02
100 -00-0000-20605 -					
THS KEY CLUB	-477.26	.00	.00	.00	-477.26
100 -00-0000-20606 -					
THS BEST BUDDIES	-1,286.90	.00	.00	.00	-1,286.90
100 -00-0000-20607 -					
THS HOME ECON. CLUB	-2.23	.00	.00	.00	-2.23
100 -00-0000-20608 -					
THS LOST TEXTBOOKS	-6,195.70	.00	.00	.00	-6,195.70
100 -00-0000-20609 -					
THS Creative Minds	-2,572.87	.00	.00	.00	-2,572.87
100 -00-0000-20611 -					
THS ACADEMIC DECATHLON	-3,167.50	700.00	.00	700.00	-2,467.50
100 -00-0000-20613 -					
THS LATIN CLUB	-144.03	.00	.00	.00	-144.03
100 -00-0000-20614 -					
THS CHORAL GROUP	-4.95	.00	.00	.00	-4.95
100 -00-0000-20615 -					
THS ITALIAN CLUB	-987.96	.00	.00	.00	-987.96
100 -00-0000-20617 -					
THS FUTURE BUSINESS LEADERS	-2,863.86	.00	.00	.00	-2,863.86
100 -00-0000-20620 -					
THS FRENCH CLUB	-952.64	.00	.00	.00	-952.64
100 -00-0000-20621 -					
THS MISCELLANEOUS	-2,941.64	189.00	.00	189.00	-2,752.64
100 -00-0000-20622 -					
THS IN/OUT	-3,153.28	.00	290.00	-290.00	-3,443.28
100 -00-0000-20624 -					
THS SPANISH CLUB	-1,062.97	.00	.00	.00	-1,062.97
100 -00-0000-20625 -					
THS SODA MACHINE	-288.83	.00	34.23	-34.23	-323.06
100 -00-0000-20627 -					
THS World Lang.HONOR SOCIETIES	-1,972.01	.00	.00	.00	-1,972.01
100 -00-0000-20628 -					
THS A.V. CLUB	-172.13	.00	.00	.00	-172.13
100 -00-0000-20629 -					
THS SUNSHINE FUND	-1,111.73	.00	.00	.00	-1,111.73
100 -00-0000-20630 -					
THS SKI CLUB	-58.33	.00	.00	.00	-58.33



ACCOUNT ACCOUNT NAME	BEG. BALANCE	DEBITS	CREDITS	NET CHANGE	END BALANCE
100 -00-0000-20631 - THS SOAR Enterprises	-2,800.40	.00	.00	.00	-2,800.40
100 -00-0000-20633 - THS WE THE PEOPLE	-51.96	.00	.00	.00	-51.96
100 -00-0000-20637 - THS Ethics Club	177.95	.00	.00	.00	177.95
100 -00-0000-20639 - THS MODEL U.N. CLUB	-1,901.80	.00	.00	.00	-1,901.80
100 -00-0000-20640 - THS INTERACT CLUB	-57.24	.00	.00	.00	-57.24
100 -00-0000-20641 - THS THESPIAN SOCIETY	-13,541.97	2,554.76	2,700.00	-145.24	-13,687.21
100 -00-0000-20642 - THS Youth to Youth	-1,051.93	.00	.00	.00	-1,051.93
100 -00-0000-20643 - THS GRADUATION-CAP & GOWNS	-10,607.91	.00	.00	.00	-10,607.91
100 -00-0000-20644 - THS ROBOTICS CLUB	-1,623.45	.00	.00	.00	-1,623.45
100 -00-0000-20645 - THS LINK CREW LEADERS	-24,623.80	789.53	.00	789.53	-23,834.27
100 -00-0000-20646 - THS CHEERLEADING	-5,075.68	1,718.15	.00	1,718.15	-3,357.53
100 -00-0000-20647 - THS FASHION CLUB	-390.12	.00	.00	.00	-390.12
100 -00-0000-20702 - THS PEER LEADERS	-412.43	.00	.00	.00	-412.43
100 -00-0000-20703 - THS PEER MEDIATION CLUB	-3,498.74	.00	.00	.00	-3,498.74
100 -00-0000-20707 - THS NATIONAL HONOR SOCIETY	-907.37	170.00	.00	170.00	-737.37
100 -00-0000-20708 - THS POETRY	-785.40	.00	.00	.00	-785.40
100 -00-0000-20709 - THS ALT METHODS OF PYMNT	37.77	.00	.00	.00	37.77
100 -00-0000-20710 - THS GIRLS BASKETBALL	-6,613.76	2,549.82	.00	2,549.82	-4,063.94
100 -00-0000-20711 - THS BOYS BASKETBALL	-40.27	.00	.00	.00	-40.27
100 -00-0000-20712 - THS GLOW CLUB	-83.00	.00	.00	.00	-83.00
100 -00-0000-20713 - THS GRAPHIC DESIGN	-214.00	.00	.00	.00	-214.00
100 -00-0000-20714 - THS GYMNASTICS	-1,603.02	.00	.00	.00	-1,603.02
100 -00-0000-20715 - THS BUS. ED. ENTREPRENEUR	-998.85	.00	.00	.00	-998.85
100 -00-0000-20718 - THS GIRLS CROSS COUNTRY	-22.25	.00	.00	.00	-22.25
100 -00-0000-20719 - THS GOLF	-566.95	.00	.00	.00	-566.95
100 -00-0000-20726 - THS GIRLS INDOOR TRACK	177.98	.00	.00	.00	177.98
100 -00-0000-20727 -					

ACCOUNT ACCOUNT NAME	BEG. BALANCE	DEBITS	CREDITS	NET CHANGE	END BALANCE
THS BOYS INDOOR TRACK	-2,276.96	.00	.00	.00	-2,276.96
100 -00-0000-20728 -					
THS MOCK TRIAL	-161.46	.00	.00	.00	-161.46
100 -00-0000-20732 -					
THS GIRLS OUTDOOR TRACK	-1,269.74	.00	.00	.00	-1,269.74
100 -00-0000-20733 -					
THS GIRLS TENNIS	-3,060.62	.00	.00	.00	-3,060.62
100 -00-0000-20810 -					
Trumbull Football Alumni Assoc	-1,000.00	.00	.00	.00	-1,000.00
100 -00-0000-24004 -					
Due to Fund 001/Town	-13,780.79	.00	2,169.85	-2,169.85	-15,950.64
100 -00-0000-24008 -					
Due to Fund 205/BOE Programs	4,561.62	.00	.00	.00	4,561.62
100 -00-0000-29280 -					
ACCOUNTS PAYABLE	.00	22,941.31	22,941.31	.00	.00
<hr/>					
TOTALS FOR FUND 100					
STUDENT ACTIVITY FUND	.00	124,921.75	124,921.75	.00	.00
<hr/>					
REPORT TOTALS	.00	124,921.75	124,921.75	.00	.00
<hr/>					
** END OF REPORT - Generated by Peg Brindisi **					

11/12/2021 11:02  
1791pbri

TRUMBULL BOE, CT  
YEAR-TO-DATE BUDGET REPORT

P 1  
glytdbud

FOR 2022 04

	ORIGINAL APPROP	TRANFRS/ ADJSTMTS	REVISED BUDGET	YTD EXPENDED	ENCUMBRANCES	AVAILABLE BUDGET	PCT USED
2009010 IDEA-611 20977	0	1,637,108	1,637,108	251,464.37	1,081,932.44	303,711.09	81.4%
2009011 IDEA-611 NP 20977	0	76,666	76,666	5,667.52	31,171.35	39,827.47	48.1%
2009080 TITLE III-A 20868	0	4,654	4,654	4,446.08	24,453.38	-24,245.96	621.0%
2009081 Title III-A NP	0	8,882	8,882	.00	1,800.00	7,082.00	20.3%
2009112 NP ESSER-Covid	0	17,018	17,018	.00	285.06	16,732.71	1.7%
2009120 ESSER II	0	765,457	765,457	190,807.39	470,552.91	104,096.74	86.4%
2009121 ESSER ARP	0	0	0	65,162.00	358,390.89	-423,552.89	100.0%
2009140 TITLE I 20679	0	93,319	93,319	25,153.51	68,045.02	120.82	99.9%
2009141 TITLE I NP	0	901	901	.00	.00	901.28	.0%
2009300 TITLE IV-A 20873	0	11,032	11,032	.00	.00	11,031.70	.0%
2009301 TITLE IV-A NP 20873	0	4,134	4,134	577.00	405.00	3,152.30	23.8%
2009350 HEADSTART ABCD OCT-SEPT	0	388,049	388,049	84,523.14	229,254.03	74,271.35	80.9%
2009370 HEAD START FOOD	0	3,956	3,956	1,728.00	.00	2,227.85	43.7%
2009450 IDEA PRE-K 20983	0	41,894	41,894	7,318.50	27,919.73	6,655.88	84.1%
2009460 OPEN CHOICE	0	240,139	240,139	7,984.56	14,090.16	218,064.06	9.2%
2009470 PERKINS GRANT 20742	0	370	370	684.00	.00	-313.60	184.7%
2009480 TITLE II PART A 20858	0	30,432	30,432	7,617.92	41,898.56	-19,084.66	162.7%
2009481 TITLE II-A NP 20858	0	33,816	33,816	1,156.00	.00	32,660.22	3.4%
2009505 TPAUD-DFC	0	45,477	45,477	40,961.06	834.60	3,681.49	91.9%
2009507 TPAUD-Opioid Prevention	0	3,526	3,526	3,525.83	.00	.00	100.0%
2009520 MAGNET TRANSPORTATION	0	72,800	72,800	.00	.00	72,800.00	.0%
2009700 CRF Grant -Coronavirus Reli	0	25,861	25,861	25,860.54	.00	.00	100.0%
2009710 SPED Stipend-COVID 19	0	19,427	19,427	4,365.02	15,061.98	.00	100.0%
GRAND TOTAL	0	3,524,917	3,524,917	729,002.44	2,366,095.11	429,819.85	87.8%

\*\* END OF REPORT - Generated by Peg Brindisi \*\*

Trumbull Board of Education											
Special Revenue BOE Programs											
7/1/21 to 10/31/21									Fund Balance(Deficit) as of		
Org#	Description	Org	Obj	Prj	Revenues	Operating Transfer In (Out) also reflected in Revenue (Expense)	Expenditures	Encumbrances	Revenues over (under) Expenditures includes Operating Transfers	7/1/21	10/31/2021
2051660	ACE Foundation	205	31510	Ace	-	-	-	-	-	58	58
2059530	Agriscience	205	31510	Agri	-	-	-	-	-	13,389	13,389
2051121	Athletics	205	31510	Athle	170,048	-	44,763	13,778	111,506	67,791	179,297
2052651	Building Use	205	31510	bldgu	1,923	-	-	-	1,923	21,636	23,559
2051650	Continuing Ed	205	31510	ContE	24,974	-	19,619	23,725	(18,370)	(342)	(18,712)
2051100	Driver's Education	205	31510	DrEd	8,540	-	6,000	1,408	1,132	14,386	15,518
2051717	Elementary Strings/Band	205	31510	Pay	375	-	32,749	160,314	(192,688)	22,745	(169,943)
2051713	ELITE Business Program	205	31510	ELITE	150	-	4,139	22,590	(26,579)	-	(26,579)
2056230	Guidance/Testing	205	31510	Guid	100	-	75	-	25	10,092	10,117
2059240	Interdistrict (TECEC*/REACH*/IIP*)	205	31510	Inter	110,180	-	62,210	297,995	(250,026)	63,005	(187,020)
2059540	Madison Grant	205	31510	Mad	-	-	-	-	-	368	368
2059490	THS Miscellaneous	205	31510	Misc	-	-	-	-	-	2,401	2,401
2051019	PE Day	205	31510	PE	-	-	-	-	-	247	247
2051200	SBCH-PPS Medicaid Program	205	31510	Medic	24,372	-	23,854	46,264	(45,747)	(28,062)	(73,808)
2055904	Rebates	205	31510	Reb	33,028	-	63,577	-	(30,549)	61,584	31,035
2051600	Summer Explorations	205	31510	SS	40,808	-	178,067	23,725	(160,984)	(19,333)	(180,318)
2052221	Take Home Device Insurance	205	31510	Take	41,410	-	25,773	-	15,637	33,472	49,110
2057100	THS AP Testing	205	31510	TEST	-	-	1,450	120,000	(121,450)	19,471	(101,978)
2051380	THS Auditorium	205	31510	Audi	-	-	-	-	-	-	-
2059400	THS Connections	205	31510	Cnnct	-	-	-	-	-	1,125	1,125
2059450	THS Culinary Kitchen Catering	205	31510	Culin	632	-	1,344	639	(1,351)	7,985	6,634
2055400	THS Musical	205	31510	music	984	-	7,902	-	(6,918)	17,939	11,022
2059510	Typical or Troubled Grant	205	31510	typic	-	-	-	-	-	643	643
2056207	Used Book Sales	205	31510	UsedB	-	-	-	-	-	2,145	2,145
2055213	Voluntary Insurance	205	31510	VISION	-	-	23,373	182,880	(206,253)	2,439	(203,814)
				Total							
	Total Special Revenue Fund			FB Alloc	457,524	-	494,896	893,319	(930,691)	315,185	(615,506)
* TECEC-Trumbull Early Childhood Education Center											
* REACH-Regional Educational Academic and Counseling Help											
* IIP-Interim Instructional (transition) Program											

School Lunch Financials for 2021-2022 School Year - FUND 210								
	7/31/2021 YTD	7/31/2021 Month	8/31/2021 YTD	8/31/2021 Month	9/30/2021 YTD	9/30/2021 Month	10/31/2021 YTD	10/31/2021 Month
<b>Balance Sheet</b>								
<b>Assets:</b>								
Cash	1,515,308		1,522,333		1,592,797		927,651	
Receivables	48,850		66,020		379,379		745,676	
Inventory	39,725		39,725		64,993		64,993	
Prepaid Expense								
Due From Others								
<b>Total Assets:</b>	1,603,883		1,628,077		2,037,169		1,738,319	
<b>Liabilities:</b>								
Accounts Payable	-		-		743,391		224,408	
Deferred Revenue	122,156		129,664		126,636		120,704	
Due to Town	1,273,920		1,281,958		898,306		1,070,239	
Reserve for Encumbrance	52,711		52,711		5,154		-	
<b>Total Liabilities:</b>	1,448,788		1,464,333		1,773,487		1,415,351	
<b>Fund Balances:</b>	155,095		163,744		263,682		322,968	
<b>Statement of Revenues, Expenditures and Changes in Fund Balances</b>								
<b>Revenue/increases:</b>								
Food Sales/Charges for Service	(180)	(180)	5,512	5,692	79,519	74,008	144,786	65,267
Intergovernmental	-	-	10,995	10,995	323,393	312,399	703,203	379,810
Other Income/Interest	-	-	-	-	-	-	-	-
Intergovernmental (Town) Transfer	-	-	-	-	-	-	-	-
Increases	-	-	-	-	-	-	-	-
<b>Total revenue/increases</b>	(180)	(180)	16,506	16,686	402,913	386,406	847,989	445,077
<b>Expenses/decreases</b>								
Wages	-	-	8,219	8,219	88,432	80,213	221,320	132,888
FICA	-	-	595	595	4,991	4,396	12,121	7,130
Medical	81,472	81,472	81,184	(289)	113,044	31,861	144,514	31,470
Other Expenses	(421)	(421)	(908)	(487)	20,617	21,525	26,347	5,730
Supplies	-	-	-	-	11,157	11,157	23,117	11,960
Cost of Food	-	-	-	-	139,515	139,515	340,757	201,242
Equipment/Capital	-	-	-	-	-	-	524	524
Intergovernmental Transfer	-	-	-	-	-	-	-	-
Decreases	-	-	-	-	-	-	-	-
<b>Total Expenditures/Increases</b>	81,051	81,051	89,089	8,038	377,756	288,667	768,700	390,944
Incr/(Decr) in fund balances before operating transfers	(81,231)		(72,583)		25,157		79,290	
Operating Transfers in/(out)	-		-		-		-	
Incr/(Decr) in fund balances after operating transfers	<b>(81,231)</b>		<b>(72,583)</b>		<b>25,157</b>		<b>79,290</b>	
<b>Fund Balances:</b>								
Beginning of year	236,327		236,327		238,525		243,679	
End of period	155,095		163,744		263,682		322,968	
Months Revenue Control	(180)		16,686		386,406		445,077	
Month Expenditure Control	81,051		8,038		288,667		390,944	
Profit (Loss) for the month	(81,231)		8,649		99,938		59,286	

# School Lunch Financials As of October 31, 2021 - FUND 210

Balance Sheet as of 10/31	Budget	10/31/21 School Lunch	Encumbered	Available/ (Over)	10/31/20 School Lunch	YTY Diff.	% Change
<b>Assets:</b>							
Cash		927,651			951,577	(23,926)	-2.51%
Receivables		745,676			167,847	577,829	344.26%
Inventory		64,993			67,194	(2,201)	-3.28%
Prepaid Expense					-		
Due From Town					-		
<b>Total Assets:</b>		<b>1,738,319</b>			<b>1,186,618</b>	<b>551,702</b>	<b>46.49%</b>
<b>Liabilities:</b>							
Accounts Payable		224,408			56,709	167,699	295.72%
Deferred Revenue		120,704			134,147	(13,442)	-10.02%
Due to Town		1,070,239			1,943,309	(873,070)	-44.93%
Reserve for Encumbrance		-			-	-	
<b>Total Liabilities:</b>		<b>1,415,351</b>			<b>2,134,164</b>	<b>(718,814)</b>	<b>-33.68%</b>
<b>Fund Balances:</b>		<b>322,968</b>			<b>(947,547)</b>	<b>1,270,515</b>	<b>-134.08%</b>
<b>Statement of Revenues, Expenditures and Changes in Fund Balances for the 2 months ended 10/31</b>							
<b>Revenue/increases:</b>							
Food Sales/Charges for Service	2,006,000	144,786	-	1,861,214	16,857	127,928	758.88%
Intergovernmental	1,853,800	703,203	-	1,150,597	115,532	587,671	508.66%
Other Income/Interest				-	-	-	
Intergovernmental (Town) Transfer				-	-	-	
Increases				-	-	-	
<b>Total revenue/increases</b>	<b>3,859,800</b>	<b>847,989</b>	<b>-</b>	<b>3,011,811</b>	<b>132,390</b>	<b>715,599</b>	<b>540.52%</b>
<b>Expenses/decreases</b>							
Wages	975,000	221,320	752,668	1,012	187,883	33,437	17.80%
FICA	53,000	12,121	-	40,879	10,877	1,244	11.44%
Medical	479,301	144,514	346,286	(11,499)	173,073	(28,559)	-16.50%
Other Expenses	42,125	26,347	-	15,778	10,060	16,287	161.91%
Supplies	55,000	23,117	32,181	(298)	13,002	10,115	77.80%
Cost of Food	971,000	340,757	503,941	126,302	84,996	255,761	300.91%
Equipment/Capital	16,500	524	-	15,976	-	524	
Intergovernmental (Town) Transfer				-	-	-	
Decreases				-	-	-	
<b>Total Expenditures/Increases</b>	<b>2,591,926</b>	<b>768,700</b>	<b>1,635,076</b>	<b>188,151</b>	<b>479,890</b>	<b>288,810</b>	<b>60.18%</b>
Incr/(Decr) in fund balances before operating transfers		79,290			(347,500)	426,790	-122.82%
Operating Transfers in/(out)		-			-	-	
<b>Incr/(Decr) in fund balances after operating transfers</b>		<b>79,290</b>			<b>(347,500)</b>	<b>426,790</b>	<b>-122.82%</b>
<b>Fund Balances:</b>							
Beginning of year		243,679			(600,047)	843,725	-140.61%
End of period		322,968			(947,547)	1,270,515	-134.08%
Month Revenue Control		445,077			83,046		
Month Expenditure Control		390,944			273,715		
<b>Profit (Loss) for the month</b>		<b>59,286</b>			<b>(190,668)</b>	<b>249,955</b>	<b>-131.09%</b>

	Trumbull Board of Education					
	Scholarship Details					
	7/1/21 to 10/31/21			Fund Balance as of 10/31/21		
Account Name	Revenues	Expenditures	Net Rev(Exp)	Permanent	Unrestricted	Total
Brewster	3	-	3	1,685	190	1,875
Peter Burke	12	-	12	-	7,927	7,927
K. Capobianco	3	-	3	-	1,836	1,836
Donna Cassidy	18	-	18	-	11,428	11,428
Citizenship/Holdsworth	0	-	0	-	40	40
Mary Curtiss	11	-	11	-	6,961	6,961
S. Dick Electronics	17	-	17	10,000	1,108	11,108
Education	-	-	-	-	-	-
Ran Grinnell	2	-	2	-	1,091	1,091
Clare Hampford	6	-	6	-	3,882	3,882
G. Hartz	-	-	-	-	10	10
Klein/ Danaher	5	-	5	-	3,234	3,234
Lorimer	0	-	0	-	78	78
Dr. Gloria Maina	1	-	1	-	555	555
Frances S. Mallett	2	-	2	-	1,162	1,162
Loretta McDougall	21	-	21	-	13,188	13,188
Karen Mraz	15	-	15	-	9,356	9,356
National Merit	1	-	1	-	536	536
PHNA	14	-	14	8,000	1,015	9,015
Ralph Pascale	1	-	1	-	511	511
Jill Resnick	25	-	25	-	16,374	16,374
R. Rossomando	10	-	10	5,190	955	6,145
Dick Seaman	107	-	107	-	4,640	4,640
R. Simses	4	-	4	2,500	307	2,807
R. Stowe	4	-	4	2,200	270	2,470
Trumbull High	2	-	2	-	1,111	1,111
Jennie N. Villano	0	-	0	-	211	211
Zink	17	-	17	10,000	1,111	11,111
<b>Total Scholarship Fund</b>	<b>300</b>	<b>-</b>	<b>300</b>	<b>39,575</b>	<b>89,087</b>	<b>128,662</b>

Effective Date: 11/15/21		<<Use last day of month			
Effective: Period 5					
SRC: GEN					
Org	Object	Proj	Account Description	Line Description	D/C Amount
205	10400		205 Cash	Open Ch, HS Food & Magnet Fund Xfer on 7.1.21	C 318,063.26
205	24000		Due to 200	Open Ch, HS Food & Magnet Fund Xfer on 7.1.21	D 318,063.26
001	24004		Due from Town	Open Ch, HS Food & Magnet Fund Xfer on 7.1.21	C 318,063.26
001	10404		BOE Cash	Open Ch, HS Food & Magnet Fund Xfer on 7.1.21	D 318,063.26
200	14003		Due from 205	Open Ch, HS Food & Magnet Fund Xfer on 7.1.21	C 318,063.26
200	24004		Due to Town	Open Ch, HS Food & Magnet Fund Xfer on 7.1.21	D 318,063.26
Town Entry					
2911000	522205		BOE Grants Expenses	Open Ch, HS Food & Magnet Fund Xfer on 7.1.21	C 318,063.26
01060000	522205		BOE Program Expenses	Open Ch, HS Food & Magnet Fund Xfer on 7.1.21	D 318,063.26
Forward to Dawn Leos at Town Hall					
Note: Per PKF audit, Joe Centofanti, the fund balances for Open Choice, Head Start Food and Magnet Transportation were moved out of 205 Special Revenue and are now accounted for in 200 Grants starting 7.1.21.					

Paul B Hendrickson  
11/15/2021

11.22.21  
BOE Meets  
Tm Com  
w/ approval



FUND: 205 SPECIAL REVENUE FUND			NET CHANGE FOR PERIOD	ACCOUNT BALANCE
-----				
ASSETS				
205	10400	SP REV Cash Peo AC#12-7016247	13,456.66	1,726,792.78
205	10401	Cash-Ticket Office	.00	4,500.00
205	11130	ACCTS RECEIVABLE	13,448.94	26,279.56
205	14002	Due from Fund 100	.00	-4,561.62
TOTAL ASSETS			26,905.60	1,753,010.72
-----				
LIABILITIES				
205	20000	Accounts Payable	882.47	2,375.23
205	24000	Due to Fund 200	756.00	-318,063.26
205	24004	Due to Fund 001/Town	-46,624.04	-1,146,689.16
205	24009	Due to Fund 100/Student Activi	.00	-44.52
205	29270	RESERVE FOR ENCUMBRANCES	.00	-3,740.46
TOTAL LIABILITIES			-44,985.57	-1,466,162.17
-----				
FUND BALANCE				
205	19200	REVENUE CONTROL	-91,741.30	+457,523.98
205	29100	BUDGET APPROPRIATIONS	.00	-315,184.72
205	29200	EXPENDITURE CONTROL	109,821.27	494,896.15
205	29240	ENCUMBRANCES CONTROL	-77,972.06	893,318.93
205	29260	ENCUMBRANCE PAYABLE	77,972.06	-893,318.93
205	31510	Fund Balance UR/UD	.00	-1,002.15
205	31510	Ace FB Ace	.00	-58.05
205	31510	Advs FB Advisor/Band	.00	-.38
205	31510	Agri FB Agriscience	.00	-13,388.50
205	31510	Athle FB Athletics	.00	-67,852.78
205	31510	bldgu Building Use	.00	-21,635.97
205	31510	Cnnct FB THS Connections	.00	-1,124.57
205	31510	ContE FB Continuing Education	.00	91.91
205	31510	Culin FB THSCulinaryKitchenCatering	.00	-7,985.42
205	31510	DrEd FB Driver's Education	.00	-14,386.11
205	31510	Guid FB Guidance	.00	-10,092.01
205	31510	Inter FB Interdistrict	.00	-63,005.13
205	31510	Mad FB Madison	.00	-367.58
205	31510	Medic FB PPS Medicaid Program	.00	28,061.62
205	31510	Misc FB Miscellaneous	.00	-2,400.52
205	31510	music FB THS Musical	.00	-25,671.23
205	31510	Pay FB Elem Strings & Band	.00	-22,745.43
205	31510	PE FB Professional Development	.00	-246.95
205	31510	Reb FB Rebates	.00	-61,584.47
205	31510	SS FB Summer Explorations	.00	19,343.63
205	31510	Take FB Take Home Device Insurance	.00	-33,472.44
205	31510	TEST FB THS AP Testing	.00	-19,471.30
205	31510	typic FB Typical or Troubled Grant	.00	-643.06
205	31510	UsedB FB Used Books	.00	-2,145.00
205	31510	VISION FB Vision	.00	-2,438.83
205	31520	BUDGET CONTROL	.00	315,184.72

		NET CHANGE	ACCOUNT
FUND: 205 SPECIAL REVENUE FUND		FOR PERIOD	BALANCE
-----			
FUND BALANCE			
TOTAL FUND BALANCE		16,079.97	-286,848.55
-----			
TOTAL LIABILITIES + FUND BALANCE		-26,905.60	-1,753,010.72
=====			

\*\* END OF REPORT - Generated by Peg Brindisi \*\*

11/15/2021 09:58 TRUMBULL BOE, CT  
1791pbri BALANCE SHEET FOR 2022 4

P 1  
glbalsht

FUND: 200 GRANTS FUND			NET CHANGE FOR PERIOD	ACCOUNT BALANCE
-----				
ASSETS				
200	14001	DUE FROM TOWN-Grant Reciepts	707,917.08	859,406.12
200	14003	Due from Fund 205	-756.00	318,063.26
TOTAL ASSETS			707,161.08	1,177,469.38
-----				
LIABILITIES				
200	20000	Accounts Payable	.00	-1,156.00
200	24004	Due to Town-Grant Cash Expense	-543,875.77	-972,889.88
200	29270	RESERVE FOR ENCUMBRANCES	111,197.50	.00
TOTAL LIABILITIES			-432,678.27	-974,045.88
-----				
FUND BALANCE				
200	19100	ESTIMATED REVENUES	1,876,411.00	1,600,145.37
200	19200	REVENUE CONTROL	-707,917.08	-861,346.14
200	29100	BUDGET APPROPRIATIONS	-1,876,411.00	-3,208,022.77
200	29200	EXPENDITURE CONTROL	433,145.27	729,002.44
200	29240	ENCUMBRANCES - CONTROL	-318,281.31	2,366,095.11
200	29260	ENCUMBRANCE PAYABLE	318,281.31	-2,366,095.11
200	31510	UNRESERVED/UNDESIGNATED	289.00	245,814.83
200	31510	HS FD Fund Balance UR/UD	.00	-3,955.85
200	31510	Mag Fund Balance UR/UD	.00	-72,800.00
200	31510	Open Fund Balance UR/UD	.00	-240,138.78
200	31520	BUDGET CONTROL	.00	1,607,877.40
TOTAL FUND BALANCE			-274,482.81	-203,423.50
-----				
TOTAL LIABILITIES + FUND BALANCE			-707,161.08	-1,177,469.38
=====				

\*\* END OF REPORT - Generated by Peg Brindisi \*\*