

TRUMBULL PUBLIC SCHOOLS

TRUMBULL, CONNECTICUT

Finance Committee of the
Trumbull Board of Education
Long Hill Administration Building
Wednesday, October 20, 2021
4:30 PM

MEETING AGENDA

1. Approval of minutes of October 7, 2021 meeting.
2. Review of Financials through September 30, 2021.
 - a. Fund 001 the BOE General Fund
 - b. Fund 009 the Town's Fund for Non-Public school expenditures
 - c. Fund 100 Student Activities
 - d. Fund 200 State and Federal grants
 - e. Fund 205 Special Revenue Funds
 - f. Fund 210 Food Service
 - g. Fund 300 Scholarships formerly Expendable Trust
3. Other Business
4. Adjourn

TRUMBULL PUBLIC SCHOOLS

TRUMBULL, CONNECTICUT

Finance Committee Of the

Trumbull Board of Education

Meeting Minutes

Date of Meeting: Thursday, October 7, 2021

Attendees: Lucinda Timpanelli, Jackie Norcel, Scot Kerr, Peg Brindisi, and Paul Hendrickson

Location: Long Hill Administration Building

The meeting was called to order at 4:30 pm.

The minutes of the September 22, 2021 meeting were approved.

Mr. Hendrickson reviewed the financial reports as of fiscal year end August 31, 2021, including:

- a. Fund 001 the BOE General Fund
- b. Fund 009 the Town's Fund for Non-Public school expenditures
- c. Fund 100 Student Activities
- d. Fund 200 State and Federal grants
- e. Fund 205 Special Revenue Funds
- f. Fund 210 Food Service
- g. Fund 300 Scholarships formerly Expendable Trust

Mr. Hendrickson stated that the cumulative percentage of budget spent year-to-date was 7.0%; in the past three years the percentage has ranged from 4.6% => 7.7%.

The Town Accounts (009) had year-to-date (YTD) expenses of \$29,017 or 2.3% of the budget.

The Student Activities accounts' (100) had minimal activity.

In reviewing grants (200), Mr. Hendrickson mentioned that ESSER I funding has been completely expended, only \$11,700 has been drawn down from the \$765,457 in ESSER II grant, and the ESSER III / ARP grant has not been drawn down.

At August 31st the Special Revenue Funds had deficits in a few accounts. The Committee would like to resume examining a couple Special Revenue accounts per meeting. Summer Explorations and Elementary Strings / Band were discussed as possibilities.

Mr. Hendrickson said that the Lunch Account had a YTD loss of \$72,583 almost exclusively due to medical insurance payments and minimal revenue. The cash balance = \$1,522,333 while the "Due to Town" = \$1,281,598; this does not reflect the \$500,000 transfer from cash to reduce the "Due to Town" which was approved at the September 14th Board of Education meeting. This transfer will appear in the September financials. The September lunch claim of \$303,039.25 was submitted to the State today.

There were negligible changes in the Scholarship Fund (300) balance increase \$53 from \$128,412 (7/31) > \$128,465 (8/31).

Mrs. Jackie Norcel made a motion to accept the Financial Report and forward it to the Board of Education. The motion was seconded by Mr. Scot Kerr. The Committee voted unanimously to forward the Report to the Board of Education.

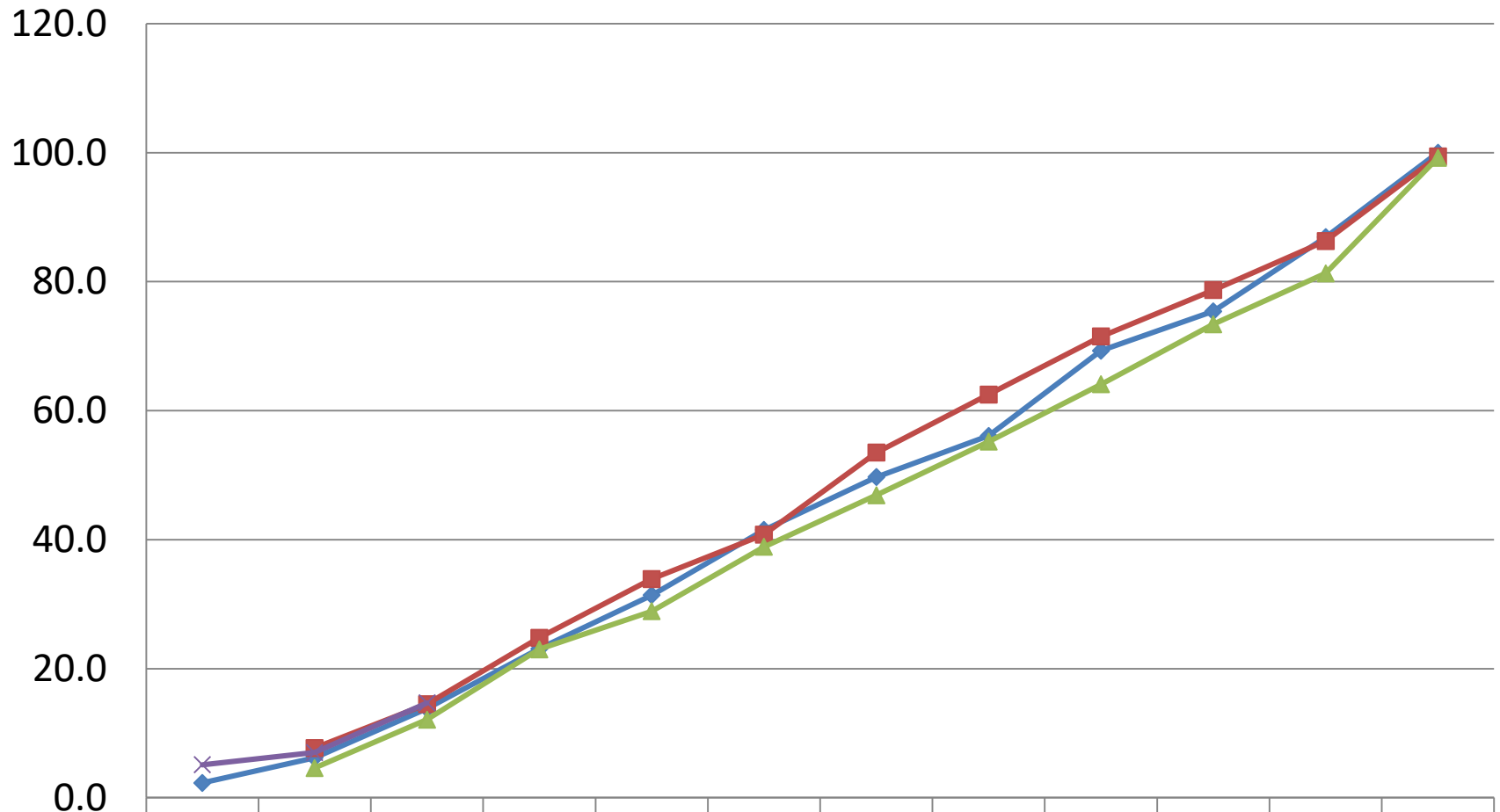
The meeting was adjourned at 4:53 pm.

Respectfully submitted,

Paul Hendrickson

DRAFT

Cumulative Total Board of Education Budget % By Month



	J	A	S	O	N	D	J	F	M	A	M	J
2018-19	2.3	6.2	13.8	23.1	31.4	41.5	49.7	56.1	69.3	75.4	86.9	100.0
2019-20		7.7	14.5	24.8	33.9	40.8	53.5	62.5	71.5	78.7	86.3	99.4
2020-21		4.6	12.1	23.0	28.9	38.9	46.9	55.2	64.1	73.4	81.3	99.2
2021-22	5.1	7.0	14.7									

◆ 2018-19
 ■ 2019-20
 ▲ 2020-21
 × 2021-22

10/18/2021 14:44
 1791pbri

TRUMBULL BOE, CT
 YEAR-TO-DATE BUDGET REPORT

P 1
 glytdbud

FOR 2022 03

	ORIGINAL APPROP	TRANFRS/ ADJSTMTS	REVISED BUDGET	YTD EXPENDED	ENCUMBRANCES	AVAILABLE BUDGET	PCT USED
001 BOE GENERAL FUND	112,296,658	0	112,296,658	16,458,332.02	89,876,373.90	5,961,952.08	94.7%
009 TOWN ACCOUNTS FUND	0	1,257,428	1,257,428	50,318.14	202,054.08	1,005,055.78	20.1%
200 GRANTS FUND	0	1,648,506	1,648,506	295,857.17	2,684,376.42	-1,331,727.19	180.8%
205 SPECIAL REVENUE FUND	0	315,185	315,185	380,488.95	971,290.99	-1,036,595.22	428.9%
210 SCHOOL LUNCH FUND	0	2,591,926	2,591,926	377,159.50	1,981,051.21	233,715.29	91.0%

GRAND TOTAL 112,296,658 5,813,045 118,109,703 17,562,155.78 95,715,146.60 4,832,400.74 95.9%

** END OF REPORT - Generated by Peg Brindisi **

Trumbull Board of Education Expense vs Budget Summary
Report for the Period Ended 9/30/2021

<u>Object Description</u>	<u>Code</u>	<u>Revised</u>	<u>Expended</u>	<u>Committed/ Estimates</u>	<u>Available/ (Over)</u>	<u>% Spent or Committed</u>
<u>Salaries</u>						
Admin/Supervisors		\$4,672,445	\$1,231,149	\$3,454,382	(\$13,085)	100%
Teachers		\$54,603,505	\$4,571,375	\$48,966,153	\$1,065,977	98%
Custodians/Maintenance		\$3,712,660	\$801,107	\$2,801,781	\$109,772	97%
Tech Support		\$534,412	\$128,872	\$348,358	\$57,182	89%
Admin Support		\$2,710,804	\$600,148	\$2,062,847	\$47,808	98%
Paras & Aides		\$4,369,946	\$512,753	\$3,975,689	(\$118,496)	103%
Substitutes		\$872,435	\$46,607	\$825,828	\$0	100%
Coaches & Advisors		\$695,045	\$9,841	\$685,204	\$0	100%
Salaries Other		\$1,584,765	\$161,721	\$1,212,034	\$211,010	87%
Misc Salary Items		\$308,668	\$172,635	\$0	\$136,033	56%
Salaries	Total	\$74,064,685	\$8,236,207	\$64,332,277	\$1,496,201	98%
<u>Employee Benefits</u>						
Health Insurance		\$16,201,647	\$4,046,470	\$11,290,077	\$865,100	95%
FICA		\$1,882,323	\$257,517	\$1,624,806	\$0	100%
Other Insurance		\$336,501	\$30,768	\$299,084	\$6,650	98%
Unemployment		\$130,000	\$1,779	\$128,220	\$1	100%
Benefits Other		\$193,595	\$39,924	\$147,702	\$5,969	97%
Employee Benefits	Total	\$18,744,066	\$4,376,458	\$13,489,889	\$877,719	95%
<u>Purchased Professional Services</u>						
Legal		\$260,000	\$12,344	\$258,556	(\$10,900)	104%
Service Contracts		\$415,087	\$283,361	\$37,310	\$94,416	77%
Consultants		\$225,000	\$57,029	\$304,457	(\$136,485)	161%
Other Prof Services		\$459,900	\$129,061	\$215,850	\$114,989	75%
Purchased Professional Services	Total	\$1,359,987	\$481,794	\$816,173	\$62,020	95%
<u>Purchased Property Services</u>						
Utilities		\$1,289,000	\$205,598	\$1,142,052	(\$58,650)	105%
Repairs & Svc Fees		\$348,500	\$81,619	\$185,875	\$81,006	77%
Copiers		\$265,000	\$40,830	\$210,150	\$14,020	95%
Other Purch'd Property Svcs		\$111,900	\$27,828	\$83,497	\$575	99%
Purchased Property Services	Total	\$2,014,400	\$355,875	\$1,621,574	\$36,951	98%
<u>Purchased Other Services</u>						
Transportation		\$6,152,707	\$354,923	\$5,638,198	\$159,586	97%
Communications		\$275,250	\$51,960	\$198,074	\$25,216	91%
Postage		\$40,000	\$6,683	\$39,318	(\$6,001)	115%
Advertising		\$1,200	\$1,875	\$0	(\$675)	156%
Interns		\$296,400	\$0	\$0	\$296,400	0%
Tuition		\$4,750,000	\$1,287,987	\$2,157,952	\$1,304,061	73%
Printing		\$14,950	\$0	\$2,092	\$12,858	14%
Other Purch'd Svcs		\$323,352	\$64,618	\$45,571	\$213,163	34%
Purchased Other Services	Total	\$11,853,859	\$1,768,045	\$8,081,205	\$2,004,608	83%
<u>Supplies</u>						
Supplies-Teaching		\$601,227	\$110,393	\$145,235	\$345,600	43%
Supplies-Office		\$101,550	\$17,678	\$18,309	\$65,563	35%
Supplies-Custodial		\$175,000	\$43,241	\$125,812	\$5,947	97%
Supplies-Maintenance		\$284,000	\$46,755	\$81,470	\$155,774	45%
Text & Workbooks		\$407,266	\$54,078	\$83,196	\$269,992	34%
Subscriptions		\$315,545	\$264,063	\$2,228	\$49,254	84%
Testing Materials		\$134,600	\$50,525	\$33,749	\$50,326	63%
Books & A/V		\$44,040	\$0	\$18,170	\$25,870	41%
Software		\$119,000	\$129,598	(\$0)	(\$10,598)	109%

Trumbull Board of Education Expense vs Budget Summary
Report for the Period Ended 9/30/2021

<u>Object Description</u>	<u>Code</u>	<u>Revised</u>	<u>Expended</u>	<u>Committed/ Estimates</u>	<u>Available/ (Over)</u>	<u>% Spent or Committed</u>
Energy		\$435,000	\$26,772	\$408,228	\$0	100%
Other Supplies		\$31,650	\$869	\$3,781	\$27,001	15%
	Supplies Total	\$2,648,878	\$743,972	\$920,177	\$984,728	63%
 <u>Property</u>						
Office Equipment		\$850	\$0	\$850	\$0	100%
Office Furniture		\$0	\$0	\$0	\$0	#DIV/0!
Classroom Equipment		\$409,131	\$171,312	\$108,594	\$129,225	68%
Classroom Furniture		\$12,700	\$3,500	\$5,635	\$3,565	72%
Bldg Equipment		\$148,492	\$25,622	\$71,448	\$51,422	65%
Bldg Improvements		\$158,489	\$55,349	\$97,750	\$5,390	97%
Other Equipment		\$3,500	\$0	\$676	\$2,824	19%
	Property Total	\$733,162	\$255,782	\$284,953	\$192,427	74%
 <u>Miscellaneous</u>						
Dues, Fees and Memberships		\$876,621	\$240,198	\$330,127	\$306,297	65%
Other Objects		\$1,000	\$0	\$0	\$1,000	0%
	Miscellaneous Total	\$877,621	\$240,198	\$330,127	\$307,297	65%
 <u>Other Objects</u>						
Other-Ant Surpl/Excess Cst		\$0	\$0	\$0	\$0	#DIV/0!
	Other Objects Total	\$0	\$0	\$0	\$0	#DIV/0!
 <u>Munis Report Total</u>						
		\$112,296,658	\$16,458,332	\$89,876,374	\$5,961,952	95%

Trumbull Board of Education Expense vs Budget Detail
Report for the Period Ended 9/30/2021

Account #	Account Description	Budget			Expended	Committed/ Estimates	Available/ (Over)
		Original	Transfers	Revised			
Salaries							
Admin/Supervisors							
01011000-51113	TECEC-Admin-Admin Salaries	\$121,360	\$0	\$121,360	\$32,674	\$88,686	\$0
01011200-51114	PPS-Admin-Director/Coordinator	\$309,071	\$0	\$309,071	\$83,211	\$225,859	\$0
01402320-51114	Asst Super-Admin-Asst Superintendent	\$130,000	\$0	\$130,000	\$13,000	\$115,000	\$2,000
01412210-51113	D/W-Elem Asst Principal	\$0	\$0	\$0	\$0	\$0	\$0
01412210-51114	Curr Dir-Admin-Director	\$193,000	\$0	\$193,000	\$53,092	\$144,108	(\$4,200)
01422520-51125	Tech-Admin-Manager	\$132,575	\$0	\$132,575	\$35,693	\$96,882	(\$0)
01512400-51113	BHES-Admin-Principal	\$178,449	\$0	\$178,449	\$48,044	\$130,405	\$0
01522400-51113	FTES-Admin-Principal/Asst Principal	\$178,449	\$0	\$178,449	\$48,044	\$130,405	\$0
01532400-51113	DFES-Admin-Princiapl	\$178,449	\$0	\$178,449	\$48,044	\$130,405	\$0
01542400-51113	MBES-Admin-Principal	\$178,449	\$0	\$178,449	\$48,044	\$130,405	\$0
01552400-51113	JRES-Admin-Principal	\$162,865	\$0	\$162,865	\$43,848	\$119,017	(\$0)
01582400-51113	TSES-Admin-Principal	\$178,449	\$0	\$178,449	\$48,044	\$130,405	\$0
01612400-51113	HMS-Admin-Principal/Asst Principal	\$335,544	\$0	\$335,544	\$90,339	\$245,205	(\$0)
01622400-51113	MMS-Admin-Principal/Asst Principal	\$343,331	\$0	\$343,331	\$92,435	\$250,896	(\$0)
01711006-51114	THS-Ag Science-Director	\$77,124	\$0	\$77,124	\$21,301	\$57,816	(\$1,993)
01711019-51114	Sports-Sports General-Director	\$164,882	\$0	\$164,882	\$44,391	\$120,491	(\$0)
01712400-51113	THS-Admin-Principals	\$842,283	\$0	\$842,283	\$226,768	\$615,514	\$0
01741200-51113	Continuing Ed-Admin-Administrator	\$0	\$0	\$0	\$0	\$0	\$0
01822230-51113	Facilities-Administrator	\$0	\$0	\$0	\$6,850	\$0	(\$6,850)
01822230-51125	Facilities-Admin-Director/Managers	\$242,997	\$0	\$242,997	\$46,422	\$177,575	\$19,000
01822230-51141	Facilities-Admin-Manager OT	\$0	\$0	\$0	\$0	\$0	\$0
01882700-51125	Trans-Admin-Manager	\$67,969	\$0	\$67,969	\$19,302	\$52,391	(\$3,724)
01902320-51115	Super-Admin-Superintendent	\$248,750	\$0	\$248,750	\$70,721	\$191,958	(\$13,929)
01912520-51113	Bus Off-Admin-Business Administrator	\$169,500	\$0	\$169,500	\$46,547	\$126,343	(\$3,390)
01912520-51129	Bus Off-Admin-Acctg Manager	\$85,182	\$0	\$85,182	\$22,934	\$62,248	\$0
01922530-51125	Asst Super-Dir Digital Learning	\$153,767	\$0	\$153,767	\$41,399	\$112,368	(\$0)
	Admin/Supervisors Total	\$4,672,445	\$0	\$4,672,445	\$1,231,149	\$3,454,382	(\$13,085)
Teachers							
01802320-51119	Super-Personnel-Teacher Xtra Time	\$11,998	\$0	\$11,998	\$2,613	\$0	\$9,385
01402320-51116	Asst Super-Admin-Teacher Stipends	\$0	\$0	\$0	\$0	\$0	\$0
01402320-51118	Asst Super-L/W-Prof Devt Prep	\$0	\$0	\$0	\$0	\$0	\$0
01402320-51200	Asst Super-Admin-Teacher Mentors	\$5,000	\$0	\$5,000	\$0	\$0	\$5,000
01402210-51110	Curr Dir-D/W-ELL Teachers	\$586,408	\$0	\$586,408	\$48,168	\$498,239	\$40,000
01411250-51110	Curr Dir-D/W-TAG Teachers	\$114,478	\$0	\$114,478	\$8,806	\$105,672	\$0
01412210-51111	Curr Dir-D/W-Program Leaders	\$378,442	\$0	\$378,442	\$43,502	\$334,940	\$0
01412210-51117	Curr Dir-D/W-Teacher Training	\$50,000	\$0	\$50,000	\$0	\$0	\$50,000
01412210-51118	Curr Dir-D/W-Prof Devt Prep	\$30,000	\$0	\$30,000	\$17,920	\$0	\$12,080
01412210-51119	Curr Dir-Admin-Curriculum Writing	\$80,104	\$0	\$80,104	\$32,406	\$0	\$47,698
01912520-51196	D/W-Admin-Retirement/LOA Savings	\$0	\$0	\$0	\$0	\$0	\$0
01912520-51197	D/W-Admin-Degree Changes	\$70,000	\$0	\$70,000	\$0	\$0	\$70,000
01011200-51118	PPS-L/W-Curriculum Writing	\$20,000	\$0	\$20,000	\$0	\$0	\$20,000
01011200-51119	PPS-L/W-Teacher Xtra Time	\$24,000	\$0	\$24,000	\$6,502	\$0	\$17,498
01021201-51119	PPS-After School-Teacher Salaries	\$0	\$0	\$0	\$0	\$0	\$0
01062140-51111	PPS-L/W-Psychologists	\$1,989,018	\$0	\$1,989,018	\$158,233	\$1,842,437	(\$11,652)
01072110-51111	PPS-L/W-Social Workers	\$1,285,959	\$0	\$1,285,959	\$91,382	\$1,072,999	\$121,579
01082150-51111	PPS-L/W-Speech & Language	\$1,358,551	\$0	\$1,358,551	\$106,134	\$1,214,017	\$38,400
01161200-51110	PPS-SPED-Elementary Teachers	\$1,822,829	\$0	\$1,822,829	\$148,066	\$1,700,088	(\$25,324)
01231200-51110	PPS-SPED-Middle School Teachers	\$1,262,530	\$0	\$1,262,530	\$103,552	\$1,151,662	\$7,316
01331200-51110	PPS-SPED-THS Teachers	\$1,973,517	\$0	\$1,973,517	\$155,011	\$1,912,089	(\$93,583)
01371200-51118	PPS-ESY-Teacher salaries	\$133,000	\$0	\$133,000	\$146,974	\$0	(\$13,974)
01011000-51110	TECEC-Classroom-Teachers	\$662,244	\$0	\$662,244	\$50,708	\$611,302	\$234
01121200-51111	TECEC-Classroom-Specialists	\$110,000	\$0	\$110,000	\$12,643	\$125,681	(\$28,324)
01511001-51110	BHES-Classroom-Teachers	\$2,167,873	\$0	\$2,167,873	\$170,838	\$2,028,446	(\$31,411)
01511002-51110	BHES-Classroom-Specialists	\$394,182	\$0	\$394,182	\$42,298	\$559,322	(\$207,438)
01512220-51110	BHES Library-Teachers-Salaries	\$93,385	\$0	\$93,385	\$7,183	\$86,202	\$0
01521001-51110	FTES-Classroom-Teachers	\$2,585,110	\$0	\$2,585,110	\$194,082	\$2,210,787	\$180,241
01521002-51110	FTES-Classroom-Specialists	\$889,845	\$0	\$889,845	\$62,134	\$725,993	\$101,718
01522220-51110	FTES Library-Teachers-Salaries	\$105,496	\$0	\$105,496	\$8,115	\$97,381	(\$0)
01531001-51110	DFES-Classroom-Teachers	\$2,402,500	\$0	\$2,402,500	\$175,967	\$2,111,601	\$114,932
01531002-51110	DFES-Classroom-Specialists	\$551,263	\$0	\$551,263	\$50,149	\$543,235	(\$42,121)
01532220-51110	DFES Library-Teachers-Salaries	\$80,442	\$0	\$80,442	\$6,188	\$74,254	\$0
01541001-51110	MBES-Classroom-Teachers	\$2,402,936	\$0	\$2,402,936	\$179,703	\$2,142,097	\$81,135
01541002-51110	MBES-Classroom-Specialists	\$812,223	\$0	\$812,223	\$64,718	\$729,365	\$18,140
01542220-51110	MBES Library-Teachers-Salaries	\$114,478	\$0	\$114,478	\$8,806	\$105,672	\$0
01551001-51110	JRES-Classroom-Teachers	\$1,957,727	\$0	\$1,957,727	\$149,992	\$1,757,323	\$50,412

Trumbull Board of Education Expense vs Budget Detail
Report for the Period Ended 9/30/2021

Account #	Account Description	Budget			Expended	Committed/ Estimates	Available/ (Over)
		Original	Transfers	Revised			
01551002-51110	JRES-Classroom-Specialists	\$477,992	\$0	\$477,992	\$48,610	\$533,559	(\$104,176)
01552220-51110	JRES Library-Teachers-Salaries	\$114,478	\$0	\$114,478	\$8,806	\$105,672	\$0
01581001-51110	TES-Classroom-Teachers	\$1,798,582	\$0	\$1,798,582	\$138,105	\$1,617,449	\$43,028
01581002-51110	TES-Classroom-Specialists	\$420,582	\$0	\$420,582	\$44,879	\$508,893	(\$133,190)
01582220-51110	TES Library-Teachers-Salaries	\$88,060	\$0	\$88,060	\$6,774	\$81,286	\$0
01611001-51110	HMS-Classroom-Teacher Salaries	\$3,969,616	\$0	\$3,969,616	\$284,089	\$3,353,487	\$332,041
01611016-51110	HMS-Music-Teacher Salaries	\$337,268	\$0	\$337,268	\$27,135	\$300,508	\$9,625
01611019-51110	HMS-PE/Health-Teacher Salaries	\$390,096	\$0	\$390,096	\$31,574	\$358,521	\$1
01612120-51110	HMS-Guidance-Teacher Salaries	\$286,244	\$0	\$286,244	\$34,140	\$252,104	\$0
01612220-51110	HMS-Library-Teacher Salaries	\$99,033	\$0	\$99,033	\$7,618	\$91,415	\$0
01612400-51110	HMS-Admin-Teacher Xtra days	\$0	\$0	\$0	\$0	\$0	\$0
01621001-51110	MMS-Classroom-Teacher Salaries	\$4,239,485	\$0	\$4,239,485	\$329,098	\$3,904,629	\$5,758
01621016-51110	MMS-Music-Teacher Salaries	\$318,661	\$0	\$318,661	\$24,740	\$271,765	\$22,156
01621019-51110	MMS-PE/Health-Teacher Salaries	\$399,307	\$0	\$399,307	\$35,024	\$367,908	(\$3,625)
01622120-51110	MMS-Guidance-Teacher Salaries	\$317,719	\$0	\$317,719	\$36,561	\$281,158	\$0
01622220-51110	MMS-Library-Teacher Salaries	\$104,176	\$0	\$104,176	\$8,014	\$96,162	(\$0)
01622400-51110	MMS-Admin-Teacher Xtra days	\$2,366	\$0	\$2,366	\$0	\$0	\$2,366
01711001-51110	THS-Classroom-Teacher Salaries	\$11,004,604	\$0	\$11,004,604	\$872,481	\$9,938,054	\$194,069
01711003-51110	THS-Admin-Detention Duty	\$3,000	\$0	\$3,000	\$218	\$0	\$2,782
01711006-51110	THS-Ag Science-Teachers Salaries	\$590,970	\$0	\$590,970	\$86,013	\$504,956	\$1
01711016-51110	THS-Music-Teacher Salaries	\$458,728	\$0	\$458,728	\$25,405	\$285,987	\$147,336
01711019-51110	THS-PE/Health-Teacher Salaries	\$854,514	\$0	\$854,514	\$68,783	\$772,872	\$12,859
01711022-51110	THS-Alternate School-Teachers Salaries	\$398,956	\$0	\$398,956	\$32,882	\$363,067	\$3,008
01711028-51110	THS-Admin-Teacher Xtra Time	\$0	\$0	\$0	\$0	\$0	\$0
01712120-51110	THS-Guidance-Teacher Salaries	\$1,318,017	\$0	\$1,318,017	\$161,056	\$1,156,961	(\$0)
01712220-51110	THS-Library-Teacher Salaries	\$85,513	\$0	\$85,513	\$6,578	\$78,935	\$0
Teachers Total		\$54,603,505	\$0	\$54,603,505	\$4,571,375	\$48,966,153	\$1,065,977

Custodians/Maintenance

01842610-51140	Facilities-Custodial-Salaries	\$2,719,708	\$0	\$2,719,708	\$548,341	\$2,210,814	(\$39,447)
01842610-51141	Facilities-Custodial-Custodial OT	\$51,410	\$0	\$51,410	\$31,977	\$0	\$19,433
01842610-51142	Facilities-Custodial-School OT	\$74,545	\$0	\$74,545	\$5,530	\$0	\$69,015
01842610-51143	Facilities-Snow Removal-Salaries	\$20,000	\$0	\$20,000	\$0	\$0	\$20,000
01842610-51145	Facilities-Custodial- Custodial Support	\$6,698	\$0	\$6,698	\$1,768	\$0	\$4,930
01842610-51149	Facilities-Custodial-Custodial Night Diff	\$6,820	\$0	\$6,820	\$570	\$0	\$6,250
01852620-51140	Facilities-Maintenance-Salaries	\$769,057	\$0	\$769,057	\$174,926	\$590,968	\$3,164
01852620-51141	Facilities-Maintenance-Maint OT	\$22,848	\$0	\$22,848	\$6,321	\$0	\$16,527
01852620-51142	Facilities-Maintenance-Security Checks	\$574	\$0	\$574	\$0	\$0	\$574
01852620-51145	Facilities-Maintenance-Summer Help	\$41,000	\$0	\$41,000	\$31,673	\$0	\$9,327
Custodians/Maintenance Total		\$3,712,660	\$0	\$3,712,660	\$801,107	\$2,801,781	\$109,772

Tech Support

01422220-51124	Tech-Dist A/V/Ch 17-Technician	\$39,698	\$0	\$39,698	\$0	\$0	\$39,698
01422520-51129	Tech-Admin-Other Technical	\$479,714	\$0	\$479,714	\$124,226	\$348,358	\$7,130
01422520-51141	Tech-Admin-Xtra Time/Help	\$15,000	\$0	\$15,000	\$4,646	\$0	\$10,354
Tech Support Total		\$534,412	\$0	\$534,412	\$128,872	\$348,358	\$57,182

Administrative Support

01011000-51130	TECEC-Admin-Secy 12 Mth	\$0	\$0	\$0	\$0	\$0	\$0
01011000-51131	TECEC-Admin-Secy 10 Mth	\$48,862	\$0	\$48,862	\$5,638	\$43,224	(\$0)
01011000-51135	TECEC-Admin-Clerical Xtra Time	\$0	\$0	\$0	\$11	\$0	(\$11)
01011200-51130	PPS-Admin-Secy 12 Mth	\$121,107	\$0	\$121,107	\$27,917	\$72,098	\$21,092
01011200-51135	PPS-Admin-Clerical Xtra Time	\$0	\$0	\$0	\$813	\$0	(\$813)
01402320-51130	Asst Super-Admin-Secy 12 Mth	\$70,660	\$0	\$70,660	\$19,893	\$52,367	(\$1,600)
01402320-51135	Asst Super-Admin-Clerical Xtra Time	\$0	\$0	\$0	\$0	\$0	\$0
01412210-51130	Curr Dir-Admin-Secy 12 Mth	\$56,607	\$0	\$56,607	\$15,240	\$41,367	(\$0)
01412210-51135	Curr Dir-Admin-Clerical Xtra Time	\$0	\$0	\$0	\$0	\$0	\$0
01422520-51130	Tech-Admin-Secy 12 Mth	\$61,786	\$0	\$61,786	\$9,788	\$35,721	\$16,277
01512400-51130	BHES-Admin-Secy 12 Mth	\$61,786	\$0	\$61,786	\$16,635	\$45,151	\$0
01512400-51131	BHES-Admin-Secy 10 Mth	\$39,149	\$0	\$39,149	\$4,517	\$34,632	\$0
01512400-51135	BHES-Admin-Clerical Xtra Time	\$0	\$0	\$0	\$0	\$0	\$0
01522400-51130	FTES-Admin-Secy 12 Mth	\$61,786	\$0	\$61,786	\$17,085	\$45,151	(\$450)
01522400-51131	FTES-Admin-Secy 10 Mth	\$40,070	\$0	\$40,070	\$5,864	\$34,606	(\$400)
01522400-51135	FTES-Admin-Clerical Xtra Time	\$0	\$0	\$0	\$39	\$0	(\$39)
01532400-51130	DFES-Admin-Secy 12 Mth	\$61,786	\$0	\$61,786	\$17,235	\$45,151	(\$600)
01532400-51131	DFES-Admin-Secy 10 Mth	\$40,072	\$0	\$40,072	\$4,539	\$34,795	\$738
01532400-51135	DFES-Admin-Clerical Xtra Time	\$0	\$0	\$0	\$411	\$0	(\$411)
01542400-51130	MBES-Admin-Secy 12 Mth	\$61,786	\$0	\$61,786	\$3,773	\$0	\$58,013

Trumbull Board of Education Expense vs Budget Detail
Report for the Period Ended 9/30/2021

Account #	Account Description	Budget			Expended	Committed/ Estimates	Available/ (Over)
		Original	Transfers	Revised			
01542400-51131	MBES-Admin-Secy 10 Mth	\$39,149	\$0	\$39,149	\$4,517	\$34,632	\$0
01542400-51135	MBES-Admin-Clerical Xtra Time	\$0	\$0	\$0	\$0	\$0	\$0
01552400-51130	JRES-Admin-Secy 12 Mth	\$61,786	\$0	\$61,786	\$17,235	\$45,151	(\$600)
01552400-51131	JRES-Admin-Secy 10 Mth	\$39,703	\$0	\$39,703	\$4,581	\$35,122	(\$0)
01552400-51135	JRES-Admin-Clerical Xtra Time	\$0	\$0	\$0	\$225	\$0	(\$225)
01582400-51130	TES-Admin-Secy 12 Mth	\$61,786	\$0	\$61,786	\$16,635	\$45,151	\$0
01582400-51131	TES-Admin-Secy 10 Mth	\$36,972	\$0	\$36,972	\$4,266	\$32,706	\$0
01582400-51135	TES-Admin-Clerical Xtra Time	\$0	\$0	\$0	\$0	\$0	\$0
01612120-51131	HMS-Guidance-Secy 10 Mth	\$48,862	\$0	\$48,862	\$5,638	\$43,224	(\$0)
01612120-51135	HMS-Guidance-Clerical Xtra Time	\$0	\$0	\$0	\$11	\$0	(\$11)
01612400-51130	HMS-Admin-Secy 12 Mth	\$61,786	\$0	\$61,786	\$16,635	\$45,151	\$0
01612400-51131	HMS-Admin-Secy 10 Mth	\$39,100	\$0	\$39,100	\$4,665	\$35,767	(\$1,332)
01612400-51135	HMS-Admin-Clerical Xtra Time	\$0	\$0	\$0	\$530	\$0	(\$530)
01622120-51131	MMS-Guidance-Secy 10 Mth	\$49,320	\$0	\$49,320	\$5,691	\$43,630	(\$0)
01622120-51135	MMS-Guidance-Clerical Xtra Time	\$0	\$0	\$0	\$21	\$0	(\$21)
01622400-51130	MMS-Admin-Secy 12 Mth	\$61,786	\$0	\$61,786	\$16,635	\$45,151	\$0
01622400-51131	MMS-Admin-Secy 10 Mth	\$48,862	\$0	\$48,862	\$5,638	\$43,224	(\$0)
01622400-51135	MMS-Admin-Clerical Xtra Time	\$0	\$0	\$0	\$0	\$0	\$0
01711006-51131	THS-Ag Science-Secy 10 Mths	\$36,992	\$0	\$36,992	\$4,518	\$32,724	(\$250)
01711006-51135	THS-Ag Science-Secy Xtra Time	\$492	\$0	\$492	\$256	\$0	\$236
01712120-51130	THS-Guidance-Secy 12 Mths	\$177,966	\$0	\$177,966	\$48,204	\$130,052	(\$290)
01712220-51130	THS-Library-Secy 12 Mths	\$0	\$0	\$0	\$114	\$22,180	(\$22,294)
01712220-51131	THS-Library-Secy 10 Mths	\$25,682	\$0	\$25,682	\$3,888	\$23,347	(\$1,554)
01712400-51130	THS-Admin-Secy 12 Mth	\$121,107	\$0	\$121,107	\$25,671	\$97,628	(\$2,192)
01712400-51131	THS-Admin-Secy 10 Mth	\$146,365	\$0	\$146,365	\$17,923	\$128,442	(\$0)
01712400-51135	THS-Admin-Clerical Xtra Time	\$239	\$0	\$239	\$43	\$0	\$196
01711022-51131	THS-Alternate School-Secy 10 Mths	\$0	\$0	\$0	\$0	\$0	\$0
01713201-51131	Sports-Sports General-Secy 10 Mths	\$49,320	\$0	\$49,320	\$6,544	\$42,595	\$182
01713201-51135	Sports-Sports Gen-Clerical Xtra Time	\$3,135	\$0	\$3,135	\$64	\$0	\$3,071
01741200-51130	Continuing Ed-Admin-Secy	\$0	\$0	\$0	\$0	\$0	\$0
01802320-51115	Super-Personnel-Support Staff	\$165,629	\$0	\$165,629	\$45,543	\$121,037	(\$950)
01802320-51131	Super-Personnel-Support Staff-10 Mth	\$44,529	\$0	\$44,529	\$5,138	\$39,391	(\$0)
01802320-51135	Super-Personnel-Clerical Xtra Time	\$1,863	\$0	\$1,863	\$2,948	\$0	(\$1,085)
01822230-51130	Facilities-Admin-Secy 12 Mth	\$125,367	\$0	\$125,367	\$34,353	\$91,614	(\$600)
01822230-51135	Facilities-Admin-Clerical Xtra Time	\$0	\$0	\$0	\$11	\$0	(\$11)
01882700-51130	Trans-Admin-Secy 12 Mth	\$96,886	\$0	\$96,886	\$28,514	\$77,394	(\$9,021)
01882700-51131	Trans-Admin-Secy 10 Mth	\$0	\$0	\$0	\$0	\$0	\$0
01882700-51135	Trans-Admin-Clerical Xtra Time	\$3,890	\$0	\$3,890	\$1,200	\$0	\$2,690
01902310-51136	Super-BOE-Secy-BOE Mtgs	\$4,500	\$0	\$4,500	\$475	\$0	\$4,025
01902320-51130	Super-Admin-Support Staff	\$144,306	\$0	\$144,306	\$42,125	\$113,553	(\$11,372)
01902320-51135	Super-Admin-Clerical Xtra Time	\$0	\$0	\$0	\$38	\$0	(\$38)
01912520-51130	Bus Off-Admin-Support 12 Mth	\$286,467	\$0	\$286,467	\$78,794	\$209,718	(\$2,045)
01912520-51135	Bus Off-Admin-Support-Clerical Xtra Time	\$1,500	\$0	\$1,500	\$1,467	\$0	\$33
01922530-51135	Asst Super-Admin-Clerical Xtra Time	\$0	\$0	\$0	\$0	\$0	\$0
Administrative Support Total		\$2,710,804	\$0	\$2,710,804	\$600,148	\$2,062,847	\$47,808
Paras & Aides							
01011200-51120	PPS-L/W-Instructional Paras	\$1,928,354	\$0	\$1,928,354	\$208,291	\$1,995,736	(\$275,672)
01011200-51121	PPS-D/W-Para Xtra Time	\$200,000	\$0	\$200,000	\$5,587	\$0	\$194,413
01011200-51122	PPS-L/W-ABA Paras	\$1,031,217	\$0	\$1,031,217	\$96,223	\$990,504	(\$55,510)
01032130-51128	PPS-L/W-Health Aides	\$79,259	\$0	\$79,259	\$7,606	\$77,419	(\$5,766)
01371200-51122	PPS-ESY-ABA Paras	\$80,000	\$0	\$80,000	\$80,458	\$0	(\$458)
01371200-51128	PPS-ESY-Health Aides	\$7,000	\$0	\$7,000	\$5,165	\$0	\$1,835
01371200-51129	PPS-ESY-Para	\$47,000	\$0	\$47,000	\$40,881	\$0	\$6,119
01412210-51120	PPS-D/W-Para Training	\$14,250	\$0	\$14,250	\$0	\$14,250	\$0
01011000-51120	TECEC-Classroom-Paras	\$178,158	\$0	\$178,158	\$16,960	\$147,175	\$14,022
01011000-51122	TECEC-Classroom-ABA Paras	\$216,379	\$0	\$216,379	\$22,032	\$216,674	(\$22,327)
01511001-51120	BHES-Classroom-Instructional Aides	\$64,293	\$0	\$64,293	\$1,930	\$62,363	\$0
01512400-51120	BHES-Admin-Paras	\$19,315	\$0	\$19,315	\$1,052	\$18,263	\$0
01521001-51120	FTES-Classroom-Instructional Aides	\$72,014	\$0	\$72,014	\$1,068	\$70,946	\$0
01522400-51120	FTES-Admin-Paras	\$18,278	\$0	\$18,278	\$2,985	\$14,658	\$635
01531001-51120	DFES-Classroom-Instructional Aides	\$54,539	\$0	\$54,539	\$1,861	\$52,678	\$0
01532400-51120	DFES-Admin-Paras	\$9,443	\$0	\$9,443	\$1,469	\$7,974	\$0
01541001-51120	MBES-Classroom-Instructional Aides	\$66,429	\$0	\$66,429	\$512	\$65,917	\$0
01542400-51120	MBES-Admin-Paras	\$9,655	\$0	\$9,655	\$765	\$8,890	\$0
01551001-51120	JRES-Classroom-Instructional Aides	\$46,984	\$0	\$46,984	\$1,697	\$45,287	\$0
01552400-51120	JRES-Admin-Paras	\$10,094	\$0	\$10,094	\$1,418	\$8,676	\$0
01581001-51120	TES-Classroom-Instructional Aides	\$57,299	\$0	\$57,299	\$1,652	\$55,647	\$0
01582400-51120	TES-Admin-Paras	\$9,443	\$0	\$9,443	\$1,153	\$8,290	\$0
01612400-51120	HMS-Admin-Admin Para	\$11,961	\$0	\$11,961	\$661	\$11,300	\$0

Trumbull Board of Education Expense vs Budget Detail
Report for the Period Ended 9/30/2021

Account #	Account Description	Budget			Expended	Committed/ Estimates	Available/ (Over)
		Original	Transfers	Revised			
01612220-51120	HMS-Library-Paras	\$0	\$0	\$0	\$0	\$0	\$0
01622400-51120	MMS-Admin-Admin Para	\$12,504	\$0	\$12,504	\$4,111	\$31,108	(\$22,715)
01622220-51120	MMS-Library-Paras	\$0	\$0	\$0	\$0	\$0	\$0
01712400-51120	THS-L/W-Paras	\$126,078	\$0	\$126,078	\$7,216	\$71,934	\$46,928
	Paras & Aides Total	\$4,369,946	\$0	\$4,369,946	\$512,753	\$3,975,689	(\$118,496)

Substitutes

01802320-51117	Super-Personnel-Substitute Teachers	\$708,209	\$0	\$708,209	\$28,193	\$680,016	\$0
01802320-51129	Super-Personnel-Substitute Paras	\$88,616	\$0	\$88,616	\$6,290	\$82,326	\$0
01802320-51139	Super-Personnel-Substitute Secys	\$14,610	\$0	\$14,610	\$8,159	\$6,451	\$0
01802320-51140	Facilities-Admin-Substitutes	\$61,000	\$0	\$61,000	\$3,965	\$57,035	\$0
	Substitutes Total	\$872,435	\$0	\$872,435	\$46,607	\$825,828	\$0

Coaches & Advisors

01613202-51116	HMS-Activities-Advisors	\$35,000	\$0	\$35,000	\$0	\$35,000	\$0
01623202-51116	MMS-Activities-Advisors	\$35,000	\$0	\$35,000	\$0	\$35,000	\$0
01711016-51116	THS-Music-Directors	\$18,419	\$0	\$18,419	\$0	\$18,419	\$0
01713202-51116	THS-Activities-Advisors	\$115,000	\$0	\$115,000	\$0	\$115,000	\$0
01713201-51116	Sports-Sports General-Coaches	\$491,626	\$0	\$491,626	\$1,440	\$481,785	\$8,401
01723301-51116	Sports-Baseball-Coaches	\$0	\$0	\$0	\$0	\$0	\$0
01723302-51116	Sports-Basketball-Coaches	\$0	\$0	\$0	\$0	\$0	\$0
01723303-51116	Sports-Field Hockey-Coaches	\$0	\$0	\$0	\$0	\$0	\$0
01723304-51116	Sports-Football-Coaches	\$0	\$0	\$0	\$0	\$0	\$0
01723305-51116	Sports-Ice Hockey-Coaches	\$0	\$0	\$0	\$0	\$0	\$0
01723306-51116	Sports-Lacrosse-Coaches	\$0	\$0	\$0	\$0	\$0	\$0
01723307-51116	Sports-Soccer-Coaches	\$0	\$0	\$0	\$0	\$0	\$0
01723308-51116	Sports-Swimming-Coaches	\$0	\$0	\$0	\$0	\$0	\$0
01723309-51116	Sports-Tennis-Coaches	\$0	\$0	\$0	\$0	\$0	\$0
01723310-51116	Sports-Indoor Track-Coaches	\$0	\$0	\$0	\$0	\$0	\$0
01723311-51116	Sports-Volleyball-Coaches	\$0	\$0	\$0	\$0	\$0	\$0
01723312-51116	Sports-Wrestling-Coaches	\$0	\$0	\$0	\$0	\$0	\$0
01723313-51116	Sports-Outdoor Track-Coaches	\$0	\$0	\$0	\$0	\$0	\$0
01723314-51116	Sports-Softball-Coaches	\$0	\$0	\$0	\$0	\$0	\$0
01723315-51116	Sports-Gymnastics-Coaches	\$0	\$0	\$0	\$0	\$0	\$0
01723316-51116	Sports-Golf-Coaches	\$0	\$0	\$0	\$0	\$0	\$0
01723317-51116	Sports-Cross Country-Coaches	\$0	\$0	\$0	\$0	\$0	\$0
01723318-51116	Sports-Cheerleading-Coaches	\$0	\$0	\$0	\$0	\$0	\$0
01723319-51116	Sports-Weight Training-Coaches	\$0	\$0	\$0	\$8,401	\$0	(\$8,401)
	Coaches Total	\$491,626	\$0	\$491,626	\$9,841	\$481,785	\$0
	Coaches & Advisors Total	\$695,045	\$0	\$695,045	\$9,841	\$685,204	\$0

Salaries Other

01401201-51117	Asst Super-L/W-Tutors Homebound	\$0	\$0	\$0	\$2,060	\$0	(\$2,060)
01401203-51117	Asst Super-L/W-Tutors Tutorial	\$0	\$0	\$0	\$306	\$0	(\$306)
01401204-51117	Asst Super-L/W-Tutors Expulsions	\$0	\$0	\$0	\$0	\$0	\$0
01011201-51117	PPS-L/W-Tutors Homebound	\$105,738	\$0	\$105,738	\$0	\$0	\$105,738
01011203-51117	PPS-L/W-Tutors Tutorial	\$61,684	\$0	\$61,684	\$0	\$0	\$61,684
01011204-51117	PPS-L/W-Tutors Expulsions	\$12,668	\$0	\$12,668	\$0	\$0	\$12,668
01922530-51129	Asst Super-Info Svcs-Oth Non-Certified	\$50,000	\$0	\$50,000	\$18,889	\$51,270	(\$20,159)
01412210-51129	Curr Dir-D/W-Other Non-Certified	\$72,978	\$0	\$72,978	\$19,648	\$53,330	\$0
01822230-51127	Facilities-D/W-Security Guards	\$691,118	\$0	\$691,118	\$68,630	\$607,142	\$15,345
01822230-51128	Facilities-D/W-Security Guards OT	\$70,000	\$0	\$70,000	\$9,039	\$0	\$60,961
01882700-51150	Bus Monitors	\$0	\$0	\$0	\$0	\$0	\$0
01032130-51123	PPS-L/W-OT/PT Therapists	\$506,579	\$0	\$506,579	\$41,691	\$500,292	(\$35,405)
01331200-51126	PPS-SPED-Work Experience	\$5,500	\$0	\$5,500	\$282	\$0	\$5,218
01512400-51121	BHES-Admin-Lunch Aides	\$0	\$0	\$0	\$0	\$0	\$0
01522400-51121	FTES-Admin-Lunch Aides	\$0	\$0	\$0	\$0	\$0	\$0
01532400-51121	DFES-Admin-Lunch Aides	\$0	\$0	\$0	\$0	\$0	\$0
01542400-51121	MBES-Admin-Lunch Aides	\$0	\$0	\$0	\$0	\$0	\$0
01552400-51121	JRES-Admin-Lunch Aides	\$0	\$0	\$0	\$0	\$0	\$0
01582400-51121	TES-Admin-Lunch Aides	\$0	\$0	\$0	\$0	\$0	\$0
01711006-51129	THS-Ag Science-Misc Salaries	\$8,500	\$0	\$8,500	\$1,177	\$0	\$7,323
01741200-51110	Continuing Ed-Classroom Instructors	\$0	\$0	\$0	\$0	\$0	\$0
	Salaries Other	\$1,584,765	\$0	\$1,584,765	\$161,721	\$1,212,034	\$211,010

Misc Salary Items

Trumbull Board of Education Expense vs Budget Detail
Report for the Period Ended 9/30/2021

Account #	Account Description	Budget			Expended	Committed/ Estimates	Available/ (Over)
		Original	Transfers	Revised			
01912520-51198	D/W-Admin-Retiree Payments	\$283,668	\$0	\$283,668	\$172,635	\$0	\$111,033
01912520-51199	D/W-Admin-Reserve For Negotiations	\$25,000	\$0	\$25,000	\$0	\$0	\$25,000
	Misc Salary Items Total	\$308,668	\$0	\$308,668	\$172,635	\$0	\$136,033
	Salaries Total	\$74,064,685	\$0	\$74,064,685	\$8,236,207	\$64,332,277	\$1,496,201
<u>Employee Benefits</u>							
<u>Health Insurance</u>							
01912520-52002	Benefits-Health & Dental	\$16,201,647	\$0	\$16,201,647	\$5,008,321	\$15,171,679	(\$3,978,353)
01912520-52011	Benefits-Health Premium Share - Medical	\$0	\$0	\$0	(\$897,112)	(\$3,664,964)	\$4,562,076
01912520-52012	Benefits-Health Premium Share - Dental	\$0	\$0	\$0	(\$64,739)	(\$216,638)	\$281,377
	Health Insurance Total	\$16,201,647	\$0	\$16,201,647	\$4,046,470	\$11,290,077	\$865,100
<u>FICA</u>							
01912520-52001	Benefits-FICA	\$1,882,323	\$0	\$1,882,323	\$257,517	\$1,624,806	\$0
	FICA	\$1,882,323	\$0	\$1,882,323	\$257,517	\$1,624,806	\$0
<u>Other Insurance</u>							
01912520-52004	Benefits-Disability Insurance	\$20,403	\$0	\$20,403	\$4,734	\$15,606	\$63
01912520-52003	D/W-Admin-Medical Waiver	\$200,983	\$0	\$200,983	\$313	\$200,670	\$0
01912520-52005	Benefits-Life Insurance	\$115,115	\$0	\$115,115	\$25,721	\$82,807	\$6,586
	Other Insurance Total	\$336,501	\$0	\$336,501	\$30,768	\$299,084	\$6,650
<u>Unemployment</u>							
01912520-52006	D/W-Admin-Unemployment	\$130,000	\$0	\$130,000	\$1,779	\$128,220	\$1
	Unemployment Total	\$130,000	\$0	\$130,000	\$1,779	\$128,220	\$1
<u>Benefits Other</u>							
01912520-52008	Benefits-Administrative Fees	\$18,821	\$0	\$18,821	\$5,105	\$7,747	\$5,969
01912520-52010	Benefits-TBOE 401a Contribution	\$174,774	\$0	\$174,774	\$34,819	\$139,955	\$0
	Benefits Other Total	\$193,595	\$0	\$193,595	\$39,924	\$147,702	\$5,969
	Employee Benefits Total	\$18,744,066	\$0	\$18,744,066	\$4,376,458	\$13,489,889	\$877,719
<u>Purchased Professional Services</u>							
<u>Legal</u>							
01902310-53308	Super-BOE-Legal-Reg Ed	\$120,000	\$0	\$120,000	\$9,796	\$111,104	(\$900)
01011200-53308	PPS-Admin-Legal SPED	\$140,000	\$0	\$140,000	\$2,548	\$147,452	(\$10,000)
	Legal Total	\$260,000	\$0	\$260,000	\$12,344	\$258,556	(\$10,900)
<u>Service Contracts</u>							
01922530-53302	Asst Super-Info Svcs-Dbase Students	\$172,562	\$0	\$172,562	\$169,423	\$0	\$3,139
01882700-53303	Trans-Admin-Software Support	\$7,000	\$0	\$7,000	\$0	\$0	\$7,000
01922530-53301	Bus off-Admin-Prof Purch'd Svcs	\$80,000	\$0	\$80,000	\$80,117	\$0	(\$117)
01422520-53305	Tech-Admin-Maintenance Contracts	\$31,000	\$0	\$31,000	\$8,780	\$0	\$22,220
01011200-53300	PPS-Admin-Prof Purch'd Services	\$69,525	\$0	\$69,525	\$19,988	\$1,200	\$48,337
01052130-53305	PPS-Health Services-Service Contracts	\$55,000	\$0	\$55,000	\$5,052	\$36,110	\$13,837
	Service Contracts Total	\$415,087	\$0	\$415,087	\$283,361	\$37,310	\$94,416
<u>Consultants</u>							
01011200-53230	PPS-L/W-Consultants	\$225,000	\$0	\$225,000	\$57,029	\$304,457	(\$136,485)
	Consultants Total	\$225,000	\$0	\$225,000	\$57,029	\$304,457	(\$136,485)
<u>Other Professional Services</u>							
01011000-53301	PPS-Police Services	\$0	\$0	\$0	\$0	\$0	\$0
01902310-53300	Super-BOE-Professional Services	\$24,000	\$0	\$24,000	\$21,373	\$1,142	\$1,485
01412210-53300	Curr Dir-D/W-Other Professional Svcs	\$19,000	\$0	\$19,000	\$1,963	\$0	\$17,037
01882700-53300	Transportation-Professional Svcs	\$0	\$0	\$0	\$0	\$0	\$0
01912520-53300	Bus Off-Admin-Professional Svcs	\$500	\$0	\$500	\$0	\$0	\$500

Trumbull Board of Education Expense vs Budget Detail
Report for the Period Ended 9/30/2021

Account #	Account Description	Budget			Expended	Committed/ Estimates	Available/ (Over)
		Original	Transfers	Revised			
01912520-53310	Bus Off-Admin-Athletic Insurance	\$90,000	\$0	\$90,000	\$92,602	\$0	(\$2,602)
01422214-53300	Tech-L/W-Other Professional Svcs	\$4,800	\$0	\$4,800	\$293	\$763	\$3,744
01422220-53300	Tech-Dist AV/Ch17-Other Prof Svcs	\$4,100	\$0	\$4,100	\$0	\$0	\$4,100
01422520-53300	Tech-Admin-Other Professional Svcs	\$10,600	\$0	\$10,600	\$5,718	\$0	\$4,882
01512400-53301	BH-Police Services	\$0	\$0	\$0	\$0	\$0	\$0
01522400-53301	FT-Police Services	\$0	\$0	\$0	\$0	\$0	\$0
01532400-53301	DF-Police Services	\$0	\$0	\$0	\$0	\$0	\$0
01542400-53301	MB-Police Services	\$0	\$0	\$0	\$0	\$0	\$0
01552400-53301	JR-Police Services	\$0	\$0	\$0	\$0	\$0	\$0
01582400-53301	TA-Police Services	\$0	\$0	\$0	\$0	\$0	\$0
01613202-53301	HMS-Activities-Police	\$700	\$0	\$700	\$0	\$0	\$700
01623202-53301	MMS-Activities-Police	\$700	\$0	\$700	\$0	\$0	\$700
01711016-53300	THS-Music-Other Professional Svcs	\$43,500	\$0	\$43,500	\$7,112	\$0	\$36,388
01712120-53220	THS-Guidance-Career Guidance	\$1,000	\$0	\$1,000	\$0	\$214	\$786
01712400-53301	THS-Admin-Police Services	\$65,000	\$0	\$65,000	\$0	\$65,000	\$0
01713201-53300	Sports-Sports General-Purch'd Svcs	\$189,000	\$0	\$189,000	\$0	\$145,731	\$43,269
01723301-53300	Sports-Baseball-Purch'd Svcs	\$0	\$0	\$0	\$0	\$0	\$0
01723302-53300	Sports-Basketball-Purch'd Svcs	\$0	\$0	\$0	\$0	\$0	\$0
01723304-53300	Sports-Field Hockey-Purch'd Svcs	\$0	\$0	\$0	\$0	\$0	\$0
01723304-53300	Sports-Football-Purch'd Svcs	\$0	\$0	\$0	\$0	\$0	\$0
01723305-53300	Sports-Ice Hockey-Purch'd Svcs	\$0	\$0	\$0	\$0	\$0	\$0
01723306-53300	Sports-Lacrosse-Purch'd Svcs	\$0	\$0	\$0	\$0	\$0	\$0
01723307-53300	Sports-Soccer-Purch'd Svcs	\$0	\$0	\$0	\$0	\$0	\$0
01723308-53300	Sports-Swimming-Purch'd Svcs	\$0	\$0	\$0	\$0	\$0	\$0
01723312-53300	Sports-Wrestling-Purch'd Svcs	\$0	\$0	\$0	\$0	\$0	\$0
01723315-53300	Sports-Gymnastics-Purch'd Svcs	\$0	\$0	\$0	\$0	\$0	\$0
01723317-53300	Sports-Cross Country-Purch'd Svcs	\$0	\$0	\$0	\$0	\$0	\$0
01723318-53300	Sports-Cheerleading-Purch'd Svcs	\$0	\$0	\$0	\$0	\$0	\$0
01852647-53300	Facilities-Bldg Improvement-Oth Prof Svcs	\$7,000	\$0	\$7,000	\$0	\$3,000	\$4,000
01741200-53300	Continuing Ed-Admin-In Service	\$0	\$0	\$0	\$0	\$0	\$0
Other Professional Services Total		\$459,900	\$0	\$459,900	\$129,061	\$215,850	\$114,989
Purchased Professional Services Total		\$1,359,987	\$0	\$1,359,987	\$481,794	\$816,173	\$62,020
<u>Purchased Property Services</u>							
<u>Utilities</u>							
01842611-54101	Facilities-D/W-Electricity	\$1,160,000	\$0	\$1,160,000	\$179,506	\$1,038,494	(\$58,000)
01842611-54105	Facilities-D/W-Water	\$129,000	\$0	\$129,000	\$26,092	\$103,558	(\$650)
Utilities Total		\$1,289,000	\$0	\$1,289,000	\$205,598	\$1,142,052	(\$58,650)
<u>Repairs & Service Fees</u>							
01052130-54300	PPS-Health Svcs-Repairs & Svc Fees	\$5,000	\$0	\$5,000	\$0	\$0	\$5,000
01422214-54300	Tech-L/W-Repairs & Svc Fees	\$1,200	\$0	\$1,200	\$0	\$0	\$1,200
01422220-54300	Tech-Dist AV/Ch17-Repairs & Svc Fees	\$500	\$0	\$500	\$0	\$0	\$500
01422520-54300	Tech-Admin-Repairs & Svc Fees	\$1,800	\$0	\$1,800	\$0	\$0	\$1,800
01711006-54300	THS-Ag Science-Repairs & Svc Fees	\$3,000	\$0	\$3,000	\$200	\$0	\$2,800
01842610-54300	Facilities-Custodial-Repairs	\$8,000	\$0	\$8,000	\$60	\$1,998	\$5,942
01852622-54300	Facilities-Snow Removal-Repairs & Svc Fees	\$20,000	\$0	\$20,000	\$0	\$0	\$20,000
01852623-54300	Facilities-Vehicles-Repairs & Svc Fees	\$14,000	\$0	\$14,000	\$1,025	\$0	\$12,975
01852625-54300	Facilities-Grounds-Repairs & Svc Fees	\$20,000	\$0	\$20,000	\$1,240	\$0	\$18,760
01852631-54300	Facilities-Maintenance-Repairs & Svc Fees	\$35,000	\$0	\$35,000	\$14,230	\$50,780	(\$30,010)
01852632-54300	Facilities-Inside Maint-Repairs & Svc Fees	\$15,000	\$0	\$15,000	\$4,555	\$1,864	\$8,581
01852633-54300	Facilities-Electrical-Repairs & Svc Fees	\$50,000	\$0	\$50,000	\$22,889	\$18,423	\$8,688
01852633-54301	Facilities-Security-Service Contracts	\$0	\$0	\$0	\$0	\$0	\$0
01852634-54300	Facilities-Fire Protection-Repairs & Svc Fees	\$0	\$0	\$0	\$2,015	\$14,497	(\$16,512)
01852637-54300	Facilities-Glass-Repairs & Svc Fees	\$0	\$0	\$0	\$1,316	\$380	(\$1,696)
01852639-54300	Facilities-HVAC-Repairs & Svc Fees	\$100,000	\$0	\$100,000	\$13,156	\$70,971	\$15,873
01852643-54300	Facilities-Equipment-Repairs & Svc Fees	\$0	\$0	\$0	\$0	\$300	(\$300)
01852644-54300	Facilities-Plumbing-Repairs & Svc Fees	\$10,000	\$0	\$10,000	\$0	\$0	\$10,000
01852645-54300	Facilities-Roofing-Repairs & Svc Fees	\$40,000	\$0	\$40,000	\$11,459	\$15,991	\$12,550
01852646-54300	Facilities-Pest Control-Repairs & Svc Fees	\$0	\$0	\$0	\$975	\$7,410	(\$8,385)
01852647-54300	Facilities-Bldg Improve-Repairs & Svc Fees	\$15,000	\$0	\$15,000	\$4,450	\$0	\$10,550
01852648-54300	Facilities-IAQ-Repairs & Svc Fees	\$10,000	\$0	\$10,000	\$4,050	\$3,260	\$2,690
Repairs & Service Fees Total		\$348,500	\$0	\$348,500	\$81,619	\$185,875	\$81,006
<u>Copiers</u>							

Trumbull Board of Education Expense vs Budget Detail
Report for the Period Ended 9/30/2021

Account #	Account Description	Budget			Expended	Committed/ Estimates	Available/ (Over)
		Original	Transfers	Revised			
01422520-54409	D/W Copiers	\$0	\$0	\$0	\$40,830	\$204,150	(\$244,980)
01902320-54409	D/W-Admin-Copiers	\$265,000	\$0	\$265,000	\$0	\$6,000	\$259,000
	Copiers Total	\$265,000	\$0	\$265,000	\$40,830	\$210,150	\$14,020
Other Purchased Property Services							
01512400-54900	BHES-Admin-Other Purch'd Svcs	\$300	\$0	\$300	\$0	\$0	\$300
01522400-54900	FTES-Admin-Other Purch'd Svcs	\$300	\$0	\$300	\$0	\$0	\$300
01532400-54900	DFES-Admin-Other Purch'd Svcs	\$500	\$0	\$500	\$0	\$0	\$500
01542400-54900	MBES-Admin-Other Purch'd Svcs	\$300	\$0	\$300	\$0	\$0	\$300
01552400-54900	JRES-Admin-Other Purch'd Svcs	\$500	\$0	\$500	\$356	\$0	\$144
01582400-54900	TES-Admin-Other Purch'd Svcs	\$300	\$0	\$300	\$0	\$0	\$300
01611016-54900	HMS-Music-Other Purch'd Property Svcs	\$1,200	\$0	\$1,200	\$0	\$140	\$1,060
01612400-54900	HMS-Classroom-Other Purch'd Svcs	\$1,700	\$0	\$1,700	\$0	\$0	\$1,700
01621016-54900	MMS-Music-Other Purch'd Property Svcs	\$1,200	\$0	\$1,200	\$0	\$0	\$1,200
01622400-54900	MMS-Classroom-Other Purch'd Svcs	\$1,700	\$0	\$1,700	\$21	\$0	\$1,679
01711006-54900	THS-Ag Science-Other Purch'd Prop Svcs	\$3,000	\$0	\$3,000	\$0	\$600	\$2,400
01711001-54900	THS-Classroom-Other Purch'd Property Svcs	\$0	\$0	\$0	\$0	\$0	\$0
01711014-54900	THS-Industrial Arts-Other Purch'd Prop Svcs	\$0	\$0	\$0	\$0	\$0	\$0
01711016-54201	THS-Music-Uniform Cleaning	\$1,500	\$0	\$1,500	\$0	\$0	\$1,500
01713201-54200	Sports-Sports General-Cleaning Svcs	\$15,000	\$0	\$15,000	\$236	\$11,764	\$3,000
01842610-54103	Facilities-Custodial-Trash/Recycling	\$50,000	\$0	\$50,000	\$16,634	\$47,274	(\$13,908)
01842610-54202	Facilities-Custodial-Cleaning	\$3,900	\$0	\$3,900	\$347	\$3,453	\$100
01852631-54301	Facilities-Maint-Oth Prof Purch'd Svcs	\$30,000	\$0	\$30,000	\$10,233	\$19,767	\$0
01852633-54301	Facilities-Elevator-Oth Prof Purch'd Svcs	\$0	\$0	\$0	\$0	\$500	(\$500)
01882700-54900	Trans-Admin-Purch'd Property Svcs	\$500	\$0	\$500	\$0	\$0	\$500
	Other Purch'd Property Services Total	\$111,900	\$0	\$111,900	\$27,828	\$83,497	\$575
	Purchased Property Services Total	\$2,014,400	\$0	\$2,014,400	\$355,875	\$1,621,574	\$36,951
Purchased Other Services							
Transportation							
01882700-55101	Trans-Admin-Reg Buses	\$3,354,190	\$0	\$3,354,190	\$0	\$3,353,190	\$1,000
01882700-55102	Trans-Admin-ACE Trips	\$3,000	\$0	\$3,000	\$0	\$0	\$3,000
01882700-55105	Trans-Admin-SPED-Summer Buses	\$163,200	\$0	\$163,200	\$256,739	\$0	(\$93,539)
01882700-55109	Trans-Admin-Fuel	\$200,000	\$0	\$200,000	\$26,481	\$141,049	\$32,470
01882700-55809	Trans-Admin-Field Trips	\$0	\$0	\$0	\$0	\$9,000	(\$9,000)
01882701-55101	Trans-Admin-SPED In District	\$1,265,675	\$0	\$1,265,675	\$0	\$1,770,675	(\$505,000)
01882701-55105	Trans-Admin-SPED Out of District	\$721,900	\$0	\$721,900	\$71,703	\$75,171	\$575,027
01882701-55108	Trans-Admin-Monitors	\$254,113	\$0	\$254,113	\$0	\$254,113	\$0
01711006-55809	THS-Ag Science-Transportation	\$2,629	\$0	\$2,629	\$0	\$0	\$2,629
01711016-55809	THS-Music-Transportation	\$15,000	\$0	\$15,000	\$0	\$0	\$15,000
01711022-55809	THS-Alternate School-Field Trips	\$1,000	\$0	\$1,000	\$0	\$0	\$1,000
01713202-55807	THS-Activities-Competitions	\$45,000	\$0	\$45,000	\$0	\$0	\$45,000
01713201-55809	THS-Activities-Sports	\$127,000	\$0	\$127,000	\$0	\$35,000	\$92,000
01723301-55809	Sports-Baseball-Buses	\$0	\$0	\$0	\$0	\$0	\$0
01723302-55809	Sports-Basketball-Buses	\$0	\$0	\$0	\$0	\$0	\$0
01723303-55809	Sports-Field Hockey-Buses	\$0	\$0	\$0	\$0	\$0	\$0
01723304-55809	Sports-Football-Buses	\$0	\$0	\$0	\$0	\$0	\$0
01723305-55809	Sports-Ice Hockey-Buses	\$0	\$0	\$0	\$0	\$0	\$0
01723306-55809	Sports-Lacrosse-Buses	\$0	\$0	\$0	\$0	\$0	\$0
01723307-55809	Sports-Soccer-Buses	\$0	\$0	\$0	\$0	\$0	\$0
01723308-55809	Sports-Swimming-Buses	\$0	\$0	\$0	\$0	\$0	\$0
01723309-55809	Sports-Tennis-Buses	\$0	\$0	\$0	\$0	\$0	\$0
01723310-55809	Sports-Indoor Track-Buses	\$0	\$0	\$0	\$0	\$0	\$0
01723311-55809	Sports-Volleyball-Buses	\$0	\$0	\$0	\$0	\$0	\$0
01723312-55809	Sports-Wrestling-Buses	\$0	\$0	\$0	\$0	\$0	\$0
01723313-55809	Sports-Outdoor Track-Buses	\$0	\$0	\$0	\$0	\$0	\$0
01723314-55809	Sports-Softball-Buses	\$0	\$0	\$0	\$0	\$0	\$0
01723315-55809	Sports-Gymnastics-Buses	\$0	\$0	\$0	\$0	\$0	\$0
01723316-55809	Sports-Golf-Buses	\$0	\$0	\$0	\$0	\$0	\$0
01723317-55809	Sports-Cross Country-Buses	\$0	\$0	\$0	\$0	\$0	\$0
01723318-55809	Sports-Cheerleading-Buses	\$0	\$0	\$0	\$0	\$0	\$0
	Sports Transportation Total	\$127,000	\$0	\$127,000	\$0	\$35,000	\$92,000
	Transportation Total	\$6,152,707	\$0	\$6,152,707	\$354,923	\$5,638,198	\$159,586
Communications							

Trumbull Board of Education Expense vs Budget Detail
Report for the Period Ended 9/30/2021

Account #	Account Description	Budget			Expended	Committed/ Estimates	Available/ (Over)
		Original	Transfers	Revised			
01422520-55903	Tech-Admin-Telephone Cell	\$32,000	\$0	\$32,000	\$5,359	\$28,067	(\$1,426)
01422520-55904	Tech-Admin-Telephone LAN	\$88,000	\$0	\$88,000	\$12,194	\$48,526	\$27,280
01422520-55907	Tech-Admin-WAN Communications	\$155,250	\$0	\$155,250	\$34,407	\$121,481	(\$638)
	Communications Total	\$275,250	\$0	\$275,250	\$51,960	\$198,074	\$25,216
Postage							
01902320-55900	Super-Admin-Postage	\$40,000	\$0	\$40,000	\$6,683	\$39,318	(\$6,001)
	Postage Total	\$40,000	\$0	\$40,000	\$6,683	\$39,318	(\$6,001)
Advertising							
01912520-55903	Bus Off-Admin-Advertising	\$1,200	\$0	\$1,200	\$1,875	\$0	(\$675)
	Advertising Total	\$1,200	\$0	\$1,200	\$1,875	\$0	(\$675)
Interns							
01401000-55503	TECEC-Classroom-Interns	\$0	\$0	\$0	\$0	\$0	\$0
01511001-55500	BHES-Classroom-Interns	\$31,200	\$0	\$31,200	\$0	\$0	\$31,200
01521001-55500	FTES-Classroom-Interns	\$31,200	\$0	\$31,200	\$0	\$0	\$31,200
01531001-55500	DFES-Classroom-Interns	\$31,200	\$0	\$31,200	\$0	\$0	\$31,200
01541001-55500	MBES-Classroom-Interns	\$31,200	\$0	\$31,200	\$0	\$0	\$31,200
01551001-55500	JRES-Classroom-Interns	\$31,200	\$0	\$31,200	\$0	\$0	\$31,200
01581001-55500	TES-Classroom-Interns	\$31,200	\$0	\$31,200	\$0	\$0	\$31,200
01611001-55500	HMS-Classroom-Interns	\$31,200	\$0	\$31,200	\$0	\$0	\$31,200
01621001-55500	MMS-Classroom-Interns	\$31,200	\$0	\$31,200	\$0	\$0	\$31,200
01401000-55502	THS-Classroom-Interns	\$46,800	\$0	\$46,800	\$0	\$0	\$46,800
	Interns Total	\$296,400	\$0	\$296,400	\$0	\$0	\$296,400
Tuition							
01402320-55600	Asst Super-Admin-Tuition	\$450,000	\$0	\$450,000	\$3,960	\$293,894	\$152,146
01396110-55600	PPS-L/W-Tuition Outplaced	\$5,300,000	\$0	\$5,300,000	\$1,284,027	\$2,864,059	\$1,151,915
01396110-55601	PPS-EXCESS COST REFUND(ECR)	(\$1,000,000)	\$0	(\$1,000,000)	\$0	(\$1,000,000)	\$0
	Tuition Total	\$4,750,000	\$0	\$4,750,000	\$1,287,987	\$2,157,952	\$1,304,061
Printing							
01902320-55905	Super-Admin-Printing	\$1,500	\$0	\$1,500	\$0	\$0	\$1,500
01402320-55906	Asst Super-Admin-Printing	\$1,500	\$0	\$1,500	\$0	\$1,142	\$358
01412210-55906	Curr Dir-Admin-Printing	\$0	\$0	\$0	\$0	\$0	\$0
01011200-55906	PPS-Admin-Printing	\$500	\$0	\$500	\$0	\$0	\$500
01011000-55906	TECEC-Admin-Printing	\$200	\$0	\$200	\$0	\$0	\$200
01612400-55906	HMS-Classroom-Printing	\$0	\$0	\$0	\$0	\$0	\$0
01622400-55906	MMS-Classroom-Printing	\$0	\$0	\$0	\$0	\$0	\$0
01711006-55906	THS-Ag Science-Printing	\$1,500	\$0	\$1,500	\$0	\$950	\$550
01712400-55906	THS-Admin-Printing	\$9,000	\$0	\$9,000	\$0	\$0	\$9,000
01713202-55906	THS-Activities-Printing	\$750	\$0	\$750	\$0	\$0	\$750
	Printing Total	\$14,950	\$0	\$14,950	\$0	\$2,092	\$12,858
Other Purch'd Services							
01011000-55800	TECEC-Admin-Professional Devt	\$700	\$0	\$700	\$0	\$0	\$700
01011000-55900	TECEC-Admin-Other Purch'd Prop Svcs	\$500	\$0	\$500	\$0	\$0	\$500
01011200-55800	PPS-Admin-Professional Devt	\$30,000	\$0	\$30,000	\$0	\$4,308	\$25,692
01011200-55801	PPS-D/W-Mileage	\$15,000	\$0	\$15,000	\$373	\$0	\$14,627
01401203-55801	Asst Super-L/W-Mileage	\$20,000	\$0	\$20,000	\$196	\$0	\$19,804
01402320-55800	Asst Super-Admin-Professional Devt	\$20,000	\$0	\$20,000	\$0	\$0	\$20,000
01412210-55800	Curr Dir-Admin-Professional Devt	\$80,000	\$0	\$80,000	\$19,719	\$1,263	\$59,017
01412210-55802	Admin-Prof Devt Admin	\$0	\$0	\$0	(\$12)	\$0	\$12
01422520-55800	Tech-Admin-Professional Devt	\$2,850	\$0	\$2,850	\$0	\$0	\$2,850
01422520-55804	Tech-Admin-Mileage	\$4,200	\$0	\$4,200	\$134	\$0	\$4,066
01512400-55800	BHES-Admin-Professional Devt	\$500	\$0	\$500	\$0	\$0	\$500
01522400-55800	FTES-Admin-Professional Devt	\$500	\$0	\$500	\$0	\$0	\$500
01532400-55800	DFES-Admin-Professional Devt	\$500	\$0	\$500	\$0	\$0	\$500
01542400-55800	MBES-Admin-Professional Devt	\$500	\$0	\$500	\$0	\$0	\$500
01552400-55800	JRES-Admin-Professional Devt	\$500	\$0	\$500	\$0	\$0	\$500
01582400-55800	TES-Admin-Professional Devt	\$500	\$0	\$500	\$0	\$0	\$500
01612400-55800	HMS-Admin-Professional Devt	\$1,000	\$0	\$1,000	\$0	\$0	\$1,000
01622400-55800	MMS-Admin-Professional Devt	\$1,000	\$0	\$1,000	\$0	\$0	\$1,000

Trumbull Board of Education Expense vs Budget Detail
Report for the Period Ended 9/30/2021

Account #	Account Description	Budget			Expended	Committed/ Estimates	Available/ (Over)
		Original	Transfers	Revised			
01711001-55800	THS-Classroom-Professional Devt	\$0	\$0	\$0	\$0	\$0	\$0
01711011-55800	THS-Foreign Lang-Professional Devt	\$0	\$0	\$0	\$0	\$0	\$0
01712400-55800	THS-Admin-Professional Devt	\$2,000	\$0	\$2,000	\$900	\$0	\$1,100
01712400-55901	THS-Admin-Other Purch'd Svcs	\$2,000	\$0	\$2,000	\$177	\$0	\$1,823
01741200-55800	Continuing Ed-Admin-Professional Devt	\$0	\$0	\$0	\$0	\$0	\$0
01741200-55900	Continuing Ed-Other Purch'd Svcs	\$40,000	\$0	\$40,000	\$0	\$40,000	\$0
01802130-55900	Super-Personnel-Other Purch'd Svcs	\$61,702	\$0	\$61,702	\$26,903	\$0	\$34,799
01802320-55800	Super-Personnel-Professional Devt	\$0	\$0	\$0	\$0	\$0	\$0
01822230-55800	Facilities-Admin-Professional Devt	\$2,500	\$0	\$2,500	\$0	\$0	\$2,500
01822230-55910	Facilities-Admin-Other Purch'd Svcs	\$20,900	\$0	\$20,900	\$13,279	\$0	\$7,621
01842610-55803	Facilities-Admin-Mileage	\$2,600	\$0	\$2,600	\$287	\$0	\$2,313
01852632-55910	Facilities-Inside Maint-Other Purch'd Svcs	\$1,500	\$0	\$1,500	\$0	\$0	\$1,500
01882700-55800	Trans-Admin-Professional Devt	\$0	\$0	\$0	\$0	\$0	\$0
01902310-55800	Super-BOE-Professional Devt	\$1,400	\$0	\$1,400	\$0	\$0	\$1,400
01902320-55800	Super-Admin-Professional Devt	\$4,500	\$0	\$4,500	\$2,662	\$0	\$1,838
01912520-55800	Bus Off-Admin-Professional Devt	\$0	\$0	\$0	\$0	\$0	\$0
01922530-55804	Asst Super-Info Svcs-Oth Purch Svcs	\$6,000	\$0	\$6,000	\$0	\$0	\$6,000
	Other Purch'd Services Total	\$323,352	\$0	\$323,352	\$64,618	\$45,571	\$213,163
	Purchased Other Services Total	\$11,853,859	\$0	\$11,853,859	\$1,768,045	\$8,081,205	\$2,004,608
Supplies							
Supplies Teaching							
01412214-56111	Curr Dir-D/W-Classroom Supplies	\$100,000	\$0	\$100,000	(\$44)	\$6,545	\$93,500
01011200-56111	PPS-Classroom-Classroom Supplies	\$30,000	\$0	\$30,000	\$1,870	\$1,899	\$26,231
01011000-56111	TECEC-Classroom-Classroom Supplies	\$6,000	\$0	\$6,000	\$476	\$486	\$5,039
01511001-56111	BHES-Classroom Supplies	\$23,000	\$0	\$23,000	\$8,055	\$7,973	\$6,972
01512220-56901	BHES-Library-Supplies	\$2,568	\$0	\$2,568	\$1,224	\$542	\$802
01521001-56111	FTES-Classroom Supplies	\$29,000	\$0	\$29,000	\$11,017	\$5,640	\$12,343
01522220-56901	FTES-Library-Supplies	\$2,500	\$0	\$2,500	\$0	\$744	\$1,756
01531001-56111	DFES-Classroom Supplies	\$30,000	\$0	\$30,000	\$18,098	\$9,177	\$2,725
01532220-56901	DFES-Library-Supplies	\$2,500	\$0	\$2,500	\$0	\$218	\$2,282
01541001-56111	MBES-Classroom Supplies	\$28,000	\$0	\$28,000	\$6,738	\$19,307	\$1,954
01542220-56901	MBES-Library-Supplies	\$2,500	\$0	\$2,500	\$0	\$571	\$1,929
01551001-56111	JRES-Classroom Supplies	\$25,000	\$0	\$25,000	\$11,442	\$3,937	\$9,621
01552220-56901	JRES-Library-Supplies	\$2,500	\$0	\$2,500	\$0	\$1,449	\$1,051
01581001-56111	TES-Classroom Supplies	\$25,000	\$0	\$25,000	\$10,722	\$2,156	\$12,122
01582220-56901	TES-Library-Supplies	\$2,500	\$0	\$2,500	\$1,740	\$125	\$636
01611001-56111	HMS-Classroom-Classroom Supplies	\$32,059	\$0	\$32,059	\$11,609	\$7,786	\$12,664
01611016-56111	HMS-Music-Classroom Supplies	\$2,500	\$0	\$2,500	\$0	\$669	\$1,831
01611019-56111	HMS-PE/Health-Classroom Supplies	\$2,000	\$0	\$2,000	\$0	\$0	\$2,000
01612220-56111	HMS-Library-Supplies	\$1,900	\$0	\$1,900	\$0	\$0	\$1,900
01621001-56111	MMS-Classroom-Classroom Supplies	\$35,000	\$0	\$35,000	\$17,532	\$2,185	\$15,283
01621016-56111	MMS-Music-Classroom Supplies	\$2,500	\$0	\$2,500	\$0	\$272	\$2,228
01621019-56111	MMS-PE/Health-Classroom Supplies	\$2,000	\$0	\$2,000	\$588	\$988	\$423
01622220-56901	MMS-Library-Supplies	\$2,000	\$0	\$2,000	\$34	\$1,104	\$863
01711001-56111	THS-Classroom-Classroom Supplies	\$35,000	\$0	\$35,000	\$1,860	\$5,260	\$27,879
01711002-56112	THS-Art-Supplies	\$18,000	\$0	\$18,000	\$1,056	\$2,764	\$14,181
01711003-56112	THS-Business Ed-Supplies	\$1,100	\$0	\$1,100	\$359	\$220	\$521
01711006-56112	THS-Ag Science-Supplies	\$31,000	\$0	\$31,000	\$1,678	\$16,604	\$12,718
01711010-56112	THS-Language Arts-Supplies	\$2,005	\$0	\$2,005	\$444	\$0	\$1,561
01711011-56112	THS-Foreign Language-Supplies	\$1,750	\$0	\$1,750	\$0	\$0	\$1,750
01711013-56112	THS-Home Economics-Supplies	\$13,500	\$0	\$13,500	\$622	\$564	\$12,315
01711014-56112	THS-Industrial Arts-Supplies	\$14,000	\$0	\$14,000	\$643	\$2,574	\$10,783
01711015-56112	THS-Mathematics-Supplies	\$2,015	\$0	\$2,015	\$340	\$280	\$1,395
01711016-56112	THS-Music-Supplies	\$5,900	\$0	\$5,900	\$0	\$900	\$5,000
01711019-56112	THS-PE/Health-Supplies	\$3,000	\$0	\$3,000	\$0	\$979	\$2,021
01711022-56112	THS-Alternate School-Supplies	\$500	\$0	\$500	\$0	\$0	\$500
01711027-56112	THS-Science-Supplies	\$12,000	\$0	\$12,000	\$0	\$0	\$12,000
01711028-56112	THS-Social Studies-Supplies	\$830	\$0	\$830	\$0	\$220	\$610
01712120-56112	THS-Guidance-Supplies	\$600	\$0	\$600	\$0	\$0	\$600
01712220-56901	THS-Library-Supplies	\$3,000	\$0	\$3,000	\$0	\$0	\$3,000
01712221-56112	THS-Audio Visual-Supplies	\$0	\$0	\$0	\$0	\$0	\$0
01712400-56116	THS-Admin-Supplies	\$1,000	\$0	\$1,000	\$1,005	\$0	(\$5)
01713201-56112	Sports-Sports General-Supplies	\$65,000	\$0	\$65,000	\$1,287	\$41,097	\$22,617
01723301-56112	Sports-Baseball-Supplies	\$0	\$0	\$0	\$0	\$0	\$0
01723302-56112	Sports-Basketball-Supplies	\$0	\$0	\$0	\$0	\$0	\$0
01723303-56112	Sports-Field Hockey-Supplies	\$0	\$0	\$0	\$0	\$0	\$0

Trumbull Board of Education Expense vs Budget Detail
Report for the Period Ended 9/30/2021

Account #	Account Description	Budget			Expended	Committed/ Estimates	Available/ (Over)
		Original	Transfers	Revised			
01723304-56112	Sports-Football-Supplies	\$0	\$0	\$0	\$0	\$0	\$0
01723305-56112	Sports-Ice Hockey-Supplies	\$0	\$0	\$0	\$0	\$0	\$0
01723306-56112	Sports-Lacrosse-Supplies	\$0	\$0	\$0	\$0	\$0	\$0
01723307-56112	Sports-Soccer-Supplies	\$0	\$0	\$0	\$0	\$0	\$0
01723309-56112	Sports-Tennis-Supplies	\$0	\$0	\$0	\$0	\$0	\$0
01723311-56112	Sports-Volleyball-Supplies	\$0	\$0	\$0	\$0	\$0	\$0
01723312-56112	Sports-Wrestling-Supplies	\$0	\$0	\$0	\$0	\$0	\$0
01723313-56112	Sports-Outdoor Track-Supplies	\$0	\$0	\$0	\$0	\$0	\$0
01723314-56112	Sports-Softball-Supplies	\$0	\$0	\$0	\$0	\$0	\$0
01723316-56112	Sports-Golf-Supplies	\$0	\$0	\$0	\$0	\$0	\$0
01723317-56112	Sports-Cross Country-Supplies	\$0	\$0	\$0	\$0	\$0	\$0
01723318-56112	Sports-Cheerleading-Supplies	\$0	\$0	\$0	\$0	\$0	\$0
	Sports Supplies Total	\$65,000	\$0	\$65,000	\$1,287	\$41,097	\$22,617
01741200-56110	Continuing Ed-Teaching Supplies	\$0	\$0	\$0	\$0	\$0	\$0
	Supplies Teaching Total	\$601,227	\$0	\$601,227	\$110,393	\$145,235	\$345,600
<u>Supplies Office</u>							
01902320-56110	Super-Admin-Office Supplies	\$5,000	\$0	\$5,000	\$1,354	\$3,362	\$284
01422214-56900	Tech-L/W-Parts	\$12,500	\$0	\$12,500	\$3,513	\$3,746	\$5,241
01422520-56900	Tech-Admin-Parts	\$5,700	\$0	\$5,700	\$0	\$71	\$5,629
01402320-56110	Asst Super-Admin-Office Supplies	\$4,000	\$0	\$4,000	\$146	\$195	\$3,659
01412210-56110	Curr Dir-Admin-Office Supplies	\$0	\$0	\$0	\$48	\$0	(\$48)
01912520-56110	Bus Off-Admin-Office Supplies	\$9,000	\$0	\$9,000	\$1,769	\$3,298	\$3,933
01422520-56110	Tech-Admin-Office Supplies	\$1,250	\$0	\$1,250	\$796	\$0	\$454
01822230-56110	Facilities-Admin-Office Supplies	\$6,300	\$0	\$6,300	\$208	\$340	\$5,752
01011200-56110	PPS-Admin-Office Supplies	\$1,000	\$0	\$1,000	\$219	\$141	\$640
01011000-56110	TECEC-Admin-Office Supplies	\$4,800	\$0	\$4,800	\$0	\$0	\$4,800
01052130-56110	PPS-Health Services-Supplies	\$6,500	\$0	\$6,500	\$1,567	\$3,842	\$1,091
01512400-56110	BHES-Admin-Office Supplies	\$4,000	\$0	\$4,000	\$842	\$46	\$3,112
01522400-56110	FTES-Admin-Office Supplies	\$4,000	\$0	\$4,000	\$741	\$0	\$3,259
01532400-56110	DFES-Admin-Office Supplies	\$4,000	\$0	\$4,000	\$1,755	\$941	\$1,305
01542400-56110	MBES-Admin-Office Supplies	\$4,000	\$0	\$4,000	\$1,660	\$20	\$2,319
01552400-56110	JRES-Admin-Office Supplies	\$4,000	\$0	\$4,000	\$1,454	\$572	\$1,974
01582400-56110	TES-Admin-Office Supplies	\$4,000	\$0	\$4,000	\$0	\$1,046	\$2,954
01612400-56110	HMS-Admin-Office Supplies	\$7,000	\$0	\$7,000	\$325	\$0	\$6,675
01622400-56110	MMS-Admin-Office Supplies	\$8,000	\$0	\$8,000	\$1,282	\$0	\$6,718
01712400-56110	THS-Admin-Office Supplies	\$4,000	\$0	\$4,000	\$0	\$690	\$3,310
01712221-56900	THS-Audio Visual-Parts & Maintenance	\$2,500	\$0	\$2,500	\$0	\$0	\$2,500
01741200-56117	Continuing Ed-Office Supplies	\$0	\$0	\$0	\$0	\$0	\$0
	Supplies Office Total	\$101,550	\$0	\$101,550	\$17,678	\$18,309	\$65,563
<u>Supplies Custodial</u>							
01842610-56130	Facilities-Custodial-Supplies	\$175,000	\$0	\$175,000	\$43,241	\$125,812	\$5,947
	Supplies Custodial Total	\$175,000	\$0	\$175,000	\$43,241	\$125,812	\$5,947
<u>Supplies Maintenance</u>							
01852622-56134	Facilities-Snow Removal-Supplies	\$9,000	\$0	\$9,000	\$0	\$0	\$9,000
01852623-56134	Facilities-Vehicles-Supplies	\$15,000	\$0	\$15,000	\$3,459	\$4,460	\$7,081
01852625-56134	Facilities-Grounds-Supplies	\$35,000	\$0	\$35,000	\$12,492	\$2,836	\$19,671
01852627-56134	Facilities-Lawn Care-Supplies	\$0	\$0	\$0	\$298	\$300	(\$598)
01852631-56134	Facilities-Maintenance-Supplies	\$2,000	\$0	\$2,000	\$290	\$1,582	\$128
01852632-56134	Facilities-Inside Maintenance-Supplies	\$30,000	\$0	\$30,000	\$4,232	\$12,736	\$13,032
01852633-56134	Facilities-Electrical-Supplies	\$55,000	\$0	\$55,000	\$4,166	\$17,660	\$33,174
01852635-56134	Facilities-Floor Repair-Supplies	\$0	\$0	\$0	\$279	\$720	(\$999)
01852637-56134	Facilities-Glass-Supplies	\$0	\$0	\$0	\$567	\$0	(\$567)
01852638-56134	Facilities-Hardware-Supplies	\$0	\$0	\$0	\$180	\$985	(\$1,165)
01852639-56134	Facilities-HVAC-Supplies	\$55,000	\$0	\$55,000	\$6,624	\$18,651	\$29,725
01852644-56134	Facilities-Plumbing-Supplies	\$36,000	\$0	\$36,000	\$5,615	\$16,598	\$13,787
01852645-56134	Facilities-Roofing-Supplies	\$5,000	\$0	\$5,000	\$0	\$0	\$5,000
01852646-56134	Facilities-Pest Control-Supplies	\$0	\$0	\$0	\$28	\$0	(\$28)
01852648-56134	Facilities-Indoor Air Quality-IAQ-Supplies	\$10,000	\$0	\$10,000	\$674	\$4,943	\$4,384
01852623-56133	Facilities-Vehicles-Gas/Diesel	\$32,000	\$0	\$32,000	\$7,852	\$0	\$24,148
	Supplies Maintenance Total	\$284,000	\$0	\$284,000	\$46,755	\$81,470	\$155,774
<u>Text & Workbooks</u>							
01011000-56411	TECEC-Classroom-Text & Workbooks	\$1,000	\$0	\$1,000	\$0	\$0	\$1,000

Trumbull Board of Education Expense vs Budget Detail
Report for the Period Ended 9/30/2021

Account #	Account Description	Budget			Expended	Committed/ Estimates	Available/ (Over)
		Original	Transfers	Revised			
01011200-56411	PPS-Admin-Text & Workbooks	\$4,300	\$0	\$4,300	\$190	\$0	\$4,110
01412210-56411	Curr Dir-D/W-Text & Workbooks	\$130,000	\$0	\$130,000	\$2,541	\$24,174	\$103,285
01511001-56411	BHES-Classroom-Text & Workbooks	\$29,000	\$0	\$29,000	\$14,230	\$10,938	\$3,833
01521001-56411	FTES-Classroom-Text & Workbooks	\$29,000	\$0	\$29,000	\$1,819	\$8,662	\$18,519
01531001-56411	DFES-Classroom-Text & Workbooks	\$29,000	\$0	\$29,000	\$9,594	\$4,412	\$14,995
01541001-56411	MBES-Classroom-Text & Workbooks	\$29,000	\$0	\$29,000	\$0	\$15,793	\$13,207
01551001-56411	JRES-Classroom-Text & Workbooks	\$26,000	\$0	\$26,000	\$2,964	\$5,559	\$17,477
01581001-56411	TES-Classroom-Text & Workbooks	\$29,000	\$0	\$29,000	\$7,568	\$152	\$21,280
01611001-56411	HMS-Classroom-Text & Workbooks	\$13,000	\$0	\$13,000	\$990	\$1,175	\$10,835
01621001-56411	MMS-Classroom-Text & Workbooks	\$13,000	\$0	\$13,000	\$0	\$1,860	\$11,140
01621016-56411	MMS-Music-Text & Workbooks	\$0	\$0	\$0	\$0	\$0	\$0
01711003-56411	THS-Business Ed-Text & Workbooks	\$8,000	\$0	\$8,000	\$1,881	\$2,004	\$4,115
01711006-56411	THS-Ag Science-Text & Workbooks	\$4,000	\$0	\$4,000	\$0	\$0	\$4,000
01711010-56411	THS-Language Arts-Text & Workbooks	\$18,000	\$0	\$18,000	\$1	\$0	\$18,000
01711011-56411	THS-Foreign Language-Text & Workbooks	\$11,516	\$0	\$11,516	\$3,172	\$6,894	\$1,450
01711013-56411	THS-Home Economics-Text & Workbooks	\$3,800	\$0	\$3,800	\$0	\$0	\$3,800
01711015-56411	THS-Mathematics-Text & Workbooks	\$9,000	\$0	\$9,000	\$4,589	\$91	\$4,320
01711019-56411	THS-PE/Health-Text & Workbooks	\$500	\$0	\$500	\$0	\$0	\$500
01711022-56411	THS-Alternate School-Text & Workbooks	\$0	\$0	\$0	\$0	\$0	\$0
01711027-56411	THS-Science-Text & Workbooks	\$9,800	\$0	\$9,800	\$0	\$0	\$9,800
01711028-56411	THS-Social Studies-Text & Workbooks	\$10,350	\$0	\$10,350	\$4,541	\$1,483	\$4,326
01741200-56411	Continuing Ed-Textbooks	\$0	\$0	\$0	\$0	\$0	\$0
	Text & Workbooks Total	\$407,266	\$0	\$407,266	\$54,078	\$83,196	\$269,992
Subscriptions							
01902310-56425	Super-BOE-Periodicals	\$0	\$0	\$0	\$0	\$0	\$0
01902320-56425	Super- Admin-Periodicals	\$700	\$0	\$700	\$484	\$0	\$216
01412210-56425	Curr Dir-Admin-Periodicals	\$300	\$0	\$300	\$0	\$0	\$300
01412214-56426	Cur Dir-D/W-Online Subscriptions	\$300,000	\$0	\$300,000	\$260,827	\$0	\$39,173
01882700-56425	Trans-Admin-Periodicals	\$0	\$0	\$0	\$0	\$0	\$0
01422520-56425	Tech-Admin-Periodicals	\$200	\$0	\$200	\$86	\$0	\$114
01822230-56425	Facilities-Admin-Periodicals	\$350	\$0	\$350	\$0	\$0	\$350
01011200-56425	PPS-Admin-Periodicals	\$1,000	\$0	\$1,000	\$175	\$0	\$826
01512220-56425	BHES-Library-Periodicals	\$1,245	\$0	\$1,245	\$0	\$0	\$1,245
01522220-56425	FTES-Library-Periodicals	\$1,200	\$0	\$1,200	\$0	\$1,200	\$0
01532220-56425	DFES-Library-Periodicals	\$1,250	\$0	\$1,250	\$0	\$0	\$1,250
01542220-56425	MBES-Library-Periodicals	\$1,200	\$0	\$1,200	\$0	\$0	\$1,200
01552220-56425	JRES-Library-Periodicals	\$1,250	\$0	\$1,250	\$1,245	\$0	\$5
01582220-56425	TES-Library-Periodicals	\$1,250	\$0	\$1,250	\$825	\$0	\$425
01612220-56425	HMS-Library-Periodicals	\$2,000	\$0	\$2,000	\$0	\$345	\$1,655
01622220-56425	MMS-Library-Periodicals	\$1,500	\$0	\$1,500	\$422	\$683	\$395
01712220-56425	THS-Library-Periodicals	\$2,100	\$0	\$2,100	\$0	\$0	\$2,100
01712400-56425	THS-Admin-Periodicals	\$0	\$0	\$0	\$0	\$0	\$0
	Subscriptions Total	\$315,545	\$0	\$315,545	\$264,063	\$2,228	\$49,254
Testing Materials							
01412210-56904	Curr Dir-D/W-Testing Materials	\$95,000	\$0	\$95,000	\$50,525	\$30,808	\$13,667
01011200-56904	PPS-L/W-Testing Materials	\$37,000	\$0	\$37,000	\$0	\$2,329	\$34,671
01011000-56904	TECEC-Classroom-Testing Materials	\$2,000	\$0	\$2,000	\$0	\$612	\$1,388
01712120-56903	THS-Guidance-Testing Materials	\$600	\$0	\$600	\$0	\$0	\$600
	Testing Materials Total	\$134,600	\$0	\$134,600	\$50,525	\$33,749	\$50,326
Books & A/V							
01512220-56420	BHES-Library-Books & Media	\$8,000	\$0	\$8,000	\$0	\$7,967	\$33
01522220-56420	FTES-Library-Books & Media	\$5,000	\$0	\$5,000	\$0	\$233	\$4,767
01532220-56420	DFES-Library-Books & Media	\$5,000	\$0	\$5,000	\$0	\$3,296	\$1,704
01542220-56420	MBES-Library-Books & Media	\$5,000	\$0	\$5,000	\$0	\$1,988	\$3,013
01552220-56420	JRES-Library-Books & Media	\$5,000	\$0	\$5,000	\$0	\$2,941	\$2,059
01582220-56420	TES-Library-Books & Media	\$5,000	\$0	\$5,000	\$0	\$988	\$4,012
01612220-56420	HMS-Library-Books & Media	\$2,000	\$0	\$2,000	\$0	\$0	\$2,000
01622220-56420	MMS-Library-Books & Media	\$2,000	\$0	\$2,000	\$0	\$756	\$1,244
01712220-56420	THS-Library-Books & Media	\$7,040	\$0	\$7,040	\$0	\$0	\$7,040
	Books & A/V Total	\$44,040	\$0	\$44,040	\$0	\$18,170	\$25,870
Software							
01412210-56118	Curr Dir-D/W Software	\$5,000	\$0	\$5,000	\$4,583	\$0	\$418
01422214-56118	Tech-L/W-Software	\$114,000	\$0	\$114,000	\$125,016	(\$0)	(\$11,016)

Trumbull Board of Education Expense vs Budget Detail
Report for the Period Ended 9/30/2021

Account #	Account Description	Budget			Expended	Committed/ Estimates	Available/ (Over)
		Original	Transfers	Revised			
01712120-56118	THS-Guidance-Software	\$0	\$0	\$0	\$0	\$0	\$0
	Software Total	\$119,000	\$0	\$119,000	\$129,598	(\$0)	(\$10,598)
Energy							
01842611-56201	Facilities-D/W-Heating Oil	\$0	\$0	\$0	\$0	\$0	\$0
01842611-56202	Facilities-D/W-Natural Gas	\$435,000	\$0	\$435,000	\$26,772	\$408,228	\$0
	Energy Total	\$435,000	\$0	\$435,000	\$26,772	\$408,228	\$0
Other Supplies							
01422214-56117	Tech-L/W-Computer Supplies	\$850	\$0	\$850	\$0	\$0	\$850
01422220-56117	Tech-Dist AV/Chan 17-Supplies	\$350	\$0	\$350	\$0	\$0	\$350
01422220-56900	Tech-Dist AV/Ch17-Parts	\$6,500	\$0	\$6,500	\$158	\$41	\$6,301
01613202-56119	HMS-Activities-Supplies	\$2,500	\$0	\$2,500	\$0	\$0	\$2,500
01623202-56119	MMS-Activities-Supplies	\$2,500	\$0	\$2,500	\$0	\$0	\$2,500
01712400-56270	THS-Admin-Security Supplies	\$1,250	\$0	\$1,250	\$566	\$0	\$684
01712400-56907	THS-Admin-Graduation	\$15,000	\$0	\$15,000	\$0	\$0	\$15,000
01713203-56906	THS-Activities-Fees, Awards & Supplies	\$2,700	\$0	\$2,700	\$145	\$0	\$2,555
01852625-56900	Fences/Playground-Supplies	\$0	\$0	\$0	\$0	\$909	(\$909)
01852636-56900	Furniture Repairs-Supplies	\$0	\$0	\$0	\$0	\$2,830	(\$2,830)
01882700-56270	Transportation-Bus Supplies	\$0	\$0	\$0	\$0	\$0	\$0
	Other Supplies Total	\$31,650	\$0	\$31,650	\$869	\$3,781	\$27,001
	Supplies Total	\$2,648,878	\$0	\$2,648,878	\$743,972	\$920,177	\$984,728
Property							
Office Equipment							
01822230-57301	Facilities-Admin-Equipment	\$350	\$0	\$350	\$0	\$850	(\$500)
01612400-57301	HMS-Admin-Equipment	\$500	\$0	\$500	\$0	\$0	\$500
01622400-57301	MMS-Admin-Equipment	\$0	\$0	\$0	\$0	\$0	\$0
	Office Equipment Total	\$850	\$0	\$850	\$0	\$850	\$0
Office Furniture							
01902520-57308	Bus Off-Admin-Office Furniture	\$0	\$0	\$0	\$0	\$0	\$0
01712400-57308	THS-Admin-Office Furniture	\$0	\$0	\$0	\$0	\$0	\$0
01052130-57304	SPED-Health Services Furniture	\$0	\$0	\$0	\$0	\$0	\$0
	Office Furniture Total	\$0	\$0	\$0	\$0	\$0	\$0
Classroom Equipment							
01412210-57301	Curr Dir-D/W-Equipment Instructional	\$10,000	\$0	\$10,000	\$0	\$0	\$10,000
01421001-57310	Tech-Classroom-Computer Equipment	\$233,500	\$0	\$233,500	\$158,666	\$58,800	\$16,034
01422214-57301	Tech-L/W-Computer Equipment	\$11,500	\$0	\$11,500	\$0	\$4,256	\$7,244
01422220-57301	Tech-Dist AV/Ch17-Equipment Instructional	\$28,500	\$0	\$28,500	\$8,271	\$8,581	\$11,648
01032130-57303	PPS-L/W-Equipment Instructional	\$11,000	\$0	\$11,000	\$0	\$8,173	\$2,827
01011000-57301	TECEC-Classroom-Instructional Equipment	\$3,000	\$0	\$3,000	\$0	\$0	\$3,000
01511001-57301	BHES-Classroom-Equipment Instructional	\$2,479	\$0	\$2,479	\$0	\$0	\$2,479
01512220-57302	BHES-Library-Equipment Instructional	\$2,214	\$0	\$2,214	\$0	\$0	\$2,214
01521001-57301	FTES-Classroom-Equipment Instructional	\$2,400	\$0	\$2,400	\$907	\$330	\$1,163
01522220-57302	FTES-Library-Equipment Instructional	\$2,300	\$0	\$2,300	\$0	\$257	\$2,043
01531001-57301	DFES-Classroom-Equipment Instructional	\$400	\$0	\$400	\$0	\$214	\$186
01532220-57302	DFES-Library-Equipment Instructional	\$2,400	\$0	\$2,400	\$0	\$88	\$2,312
01541001-57301	MBES-Classroom-Equipment Instructional	\$1,000	\$0	\$1,000	\$0	\$0	\$1,000
01542220-57302	MBES-Library-Equipment Instructional	\$2,200	\$0	\$2,200	\$846	\$0	\$1,354
01551001-57301	JRES-Classroom-Equipment Instructional	\$2,500	\$0	\$2,500	\$0	\$0	\$2,500
01552220-57302	JRES-Library-Equipment Instructional	\$2,200	\$0	\$2,200	\$1,047	\$351	\$802
01581001-57301	TES-Classroom-Equipment Instructional	\$2,500	\$0	\$2,500	\$0	\$109	\$2,391
01582220-57302	TES-Library-Equipment Instructional	\$2,200	\$0	\$2,200	\$0	\$0	\$2,200
01611001-57301	HMS-Classroom-Equipment Instructional	\$3,400	\$0	\$3,400	\$234	\$0	\$3,166
01611016-57301	HMS-Music-Equipment Instructional	\$3,300	\$0	\$3,300	\$82	\$1,360	\$1,858
01612220-57302	HMS-Library-Equipment Instructional	\$1,700	\$0	\$1,700	\$223	\$277	\$1,200
01621001-57301	MMS-Classroom-Equipment Instructional	\$3,400	\$0	\$3,400	\$0	\$498	\$2,902
01621016-57301	MMS-Music-Equipment Instructional	\$3,300	\$0	\$3,300	\$0	\$0	\$3,300
01622220-57302	MMS-Library-Equipment Instructional	\$1,700	\$0	\$1,700	\$0	\$215	\$1,485
01711001-57301	THS-Classroom-Equipment	\$0	\$0	\$0	\$0	\$0	\$0
01711002-57301	THS-Art-Equipment Instructional	\$2,000	\$0	\$2,000	\$0	\$0	\$2,000
01711003-57301	THS-Business Ed-Equipment Instructional	\$0	\$0	\$0	\$0	\$0	\$0
01711006-57301	THS-Ag Science-Equipment Instructional	\$969	\$0	\$969	\$0	\$0	\$969

Trumbull Board of Education Expense vs Budget Detail
Report for the Period Ended 9/30/2021

Account #	Account Description	Budget			Expended	Committed/ Estimates	Available/ (Over)
		Original	Transfers	Revised			
01711011-57301	THS-Foreign Language-Equipment Instructional	\$6,200	\$0	\$6,200	\$0	\$5,976	\$224
01711013-57301	THS-Home Economics-Equipment Instructional	\$2,500	\$0	\$2,500	\$711	\$2,446	(\$657)
01711014-57301	THS-Industrial Arts-Equipment Instructional	\$800	\$0	\$800	\$0	\$1,300	(\$500)
01711016-57301	THS-Music-Equipment Instructional	\$1,794	\$0	\$1,794	\$128	\$995	\$671
01711019-57301	THS-PE/Health-Equipment Instructional	\$2,500	\$0	\$2,500	\$0	\$0	\$2,500
01711027-57301	THS-Science-Equipment Instructional	\$8,500	\$0	\$8,500	\$0	\$2,065	\$6,435
01712220-57302	THS-Library-Equipment Instructional	\$775	\$0	\$775	\$0	\$0	\$775
01712221-57301	THS-Audio Visual-Equipment Instructional	\$4,000	\$0	\$4,000	\$0	\$0	\$4,000
01712400-57301	THS-Admin-Equipment	\$0	\$0	\$0	\$0	\$0	\$0
01713201-57301	Sports-Sports General-Equipment Instructional	\$40,000	\$0	\$40,000	\$197	\$12,303	\$27,500
01723307-57301	Sports-Soccer-Equipment	\$0	\$0	\$0	\$0	\$0	\$0
01723308-57301	Sports-Swimming-Equipment	\$0	\$0	\$0	\$0	\$0	\$0
01723309-57301	Sports-Tennis-Equipment	\$0	\$0	\$0	\$0	\$0	\$0
01723311-57301	Sports-Volleyball-Equipment	\$0	\$0	\$0	\$0	\$0	\$0
01723313-57301	Sports-Outdoor Track-Equipment	\$0	\$0	\$0	\$0	\$0	\$0
01723315-57301	Sports-Gymnastics-Equipment	\$0	\$0	\$0	\$0	\$0	\$0
	Classroom Equipment Total	\$409,131	\$0	\$409,131	\$171,312	\$108,594	\$129,225
<u>Classroom Furniture</u>							
01852651-57301	Facilities-Building Improvement-Furniture	\$1,200	\$0	\$1,200	\$0	\$0	\$1,200
01402320-57308	Asst. Super.-Furniture	\$0	\$0	\$0	\$0	\$810	(\$810)
01511001-57308	BHES-Classroom-New Furniture	\$1,000	\$0	\$1,000	\$751	\$751	(\$501)
01521001-57308	FTES-Classroom-New Furniture	\$2,000	\$0	\$2,000	\$0	\$0	\$2,000
01531001-57308	DFES-Classroom-New Furniture	\$2,000	\$0	\$2,000	\$1,664	\$2,511	(\$2,174)
01541001-57308	MBES-Classroom-New Furniture	\$2,000	\$0	\$2,000	\$0	\$872	\$1,128
01551001-57308	JRES-Classroom-New Furniture	\$2,000	\$0	\$2,000	\$695	\$432	\$873
01581001-57308	TES-Classroom-New Furniture	\$2,000	\$0	\$2,000	\$390	\$260	\$1,350
01611001-57308	HMS-Classroom-New Furniture	\$500	\$0	\$500	\$0	\$0	\$500
01621001-57308	MMS-Classroom-New Furniture	\$0	\$0	\$0	\$0	\$0	\$0
	Classroom Furniture Total	\$12,700	\$0	\$12,700	\$3,500	\$5,635	\$3,565
<u>Building Equipment</u>							
01842610-57301	Facilities-Custodial-Equipment	\$5,000	\$0	\$5,000	\$0	\$3,063	\$1,937
01852622-57307	Facilities-Snow Removal-Equipment	\$5,000	\$0	\$5,000	\$0	\$0	\$5,000
01852623-57307	Facilities-Vehicles-Equipment	\$1,000	\$0	\$1,000	\$0	\$0	\$1,000
01852625-57307	Facilities-Grounds-Equipment	\$17,000	\$0	\$17,000	\$25,437	\$0	(\$8,437)
01852632-57307	Facilities-Inside Maintenance-Equipment	\$1,000	\$0	\$1,000	\$0	\$0	\$1,000
01852633-57307	Facilities-Electrical-Equipment	\$2,500	\$0	\$2,500	\$185	\$0	\$2,315
01852639-57307	Facilities-HVAC-Equipment	\$25,992	\$0	\$25,992	\$0	\$0	\$25,992
01852644-57307	Facilities-Plumbing-Equipment	\$1,000	\$0	\$1,000	\$0	\$0	\$1,000
01852648-57307	Facilities-IAQ-Equipment	\$10,000	\$0	\$10,000	\$0	\$0	\$10,000
01852654-57340	Facilities-Maintenance-Vehicle	\$80,000	\$0	\$80,000	\$0	\$68,385	\$11,615
	Building Equipment Total	\$148,492	\$0	\$148,492	\$25,622	\$71,448	\$51,422
<u>Building Improvements</u>							
01842611-57202	Facilities-Project Lease Pymts	\$128,489	\$0	\$128,489	\$0	\$0	\$128,489
01852650-57200	Facilities-Site-Building Improvement	\$0	\$0	\$0	\$720	\$9,020	(\$9,740)
01852650-57202	Facilities-Site-Building Improvement	\$0	\$0	\$0	\$0	\$8,010	(\$8,010)
01852651-57202	Facilities-Building Improvement-Projects	\$30,000	\$0	\$30,000	\$54,629	\$80,720	(\$105,349)
	Building Improvements Total	\$158,489	\$0	\$158,489	\$55,349	\$97,750	\$5,390
<u>Other Equipment</u>							
01422520-57301	Tech-Admin-WAN Equipment	\$3,500	\$0	\$3,500	\$0	\$676	\$2,824
	Other Equipment Total	\$3,500	\$0	\$3,500	\$0	\$676	\$2,824
	Property Total	\$733,162	\$0	\$733,162	\$255,782	\$284,953	\$192,427
<u>Miscellaneous</u>							
<u>Dues, Fees and Memberships</u>							
01912520-58310	Redemption of Principal on Loans	\$673,494	\$0	\$673,494	\$172,784	\$297,424	\$203,286
01912520-58320	Interest on Loans	\$120,124	\$0	\$120,124	\$12,255	\$17,308	\$90,561
01902320-58900	Super-Admin-Dues & Fees	\$13,000	\$0	\$13,000	\$14,364	\$2,400	(\$3,764)
01402210-58900	Instructional-Dues & Fees	\$0	\$0	\$0	\$0	\$0	\$0
01402320-58900	Asst Super-Admin-Dues & Fees	\$7,000	\$0	\$7,000	\$1,285	\$3,245	\$2,470
01412210-58900	Curr Dir-Admin-Dues & Fees	\$0	\$0	\$0	\$0	\$0	\$0

Trumbull Board of Education Expense vs Budget Detail
Report for the Period Ended 9/30/2021

Account #	Account Description	Budget			Expended	Committed/ Estimates	Available/ (Over)
		Original	Transfers	Revised			
01882700-58900	Trans-Admin-Dues & Fees	\$375	\$0	\$375	\$0	\$0	\$375
01912520-58900	Bus Off-Admin-Dues & Fees	\$7,000	\$0	\$7,000	\$6,036	\$0	\$964
01422520-58900	Tech-Admin-Dues & Fees	\$100	\$0	\$100	\$0	\$0	\$100
01822230-58900	Facilities-Admin-Dues & Fees	\$1,500	\$0	\$1,500	\$120	\$0	\$1,380
01011200-58900	PPS-Admin-Dues & Fees	\$2,000	\$0	\$2,000	\$150	\$0	\$1,850
01011000-58900	TECEC-Admin-Dues & Fees	\$700	\$0	\$700	\$0	\$97	\$603
01512400-58900	BHES-Admin-Dues & Fees	\$553	\$0	\$553	\$0	\$0	\$553
01522400-58900	FTES-Admin-Dues & Fees	\$553	\$0	\$553	\$318	\$0	\$235
01532400-58900	DFES-Admin-Dues & Fees	\$248	\$0	\$248	\$0	\$0	\$248
01542400-58900	MBES-Admin-Dues & Fees	\$250	\$0	\$250	\$0	\$0	\$250
01552400-58900	JRES-Admin-Dues & Fees	\$250	\$0	\$250	\$0	\$0	\$250
01582400-58900	TES-Admin-Dues & Fees	\$550	\$0	\$550	\$233	\$78	\$239
01612400-58900	HMS-Admin-Dues & Fees	\$900	\$0	\$900	\$1,060	\$0	(\$160)
01622400-58900	MMS-Admin-Dues & Fees	\$900	\$0	\$900	\$764	\$0	\$136
01711006-58900	THS-Ag Science-Dues & Fees	\$899	\$0	\$899	\$305	\$0	\$594
01711019-58900	THS-PE/Health-Dues & Fees	\$0	\$0	\$0	\$0	\$0	\$0
01712120-58900	THS-Guidance-Dues & Fees	\$0	\$0	\$0	\$25	\$425	(\$450)
01712220-58900	THS-Library-Dues & Fees	\$0	\$0	\$0	\$0	\$0	\$0
01712400-58900	THS-Admin-Dues & Fees	\$11,225	\$0	\$11,225	\$10,205	\$310	\$710
01713201-58900	Sports-Sports General-Dues & Fees	\$35,000	\$0	\$35,000	\$20,293	\$8,840	\$5,867
01741200-58900	Cont Ed-Admin-Dues & Fees	\$0	\$0	\$0	\$0	\$0	\$0
	Dues, Fees and Memberships Total	\$876,621	\$0	\$876,621	\$240,198	\$330,127	\$306,297
<u>Other Miscellaneous</u>							
01912520-58904	D/W-Admin-Bad Debt Expense	\$1,000	\$0	\$1,000	\$0	\$0	\$1,000
	Other Miscellaneous Total	\$1,000	\$0	\$1,000	\$0	\$0	\$1,000
	Miscellaneous Total	\$877,621	\$0	\$877,621	\$240,198	\$330,127	\$307,297
<u>Other Objects</u>							
01412210-59000	Curr-District Wide Support	\$0	\$0	\$0	\$0	\$0	\$0
01912520-59000	Bus Office-Admin-Anticipated Surplus	\$0	\$0	\$0	\$0	\$0	\$0
01912520-59001	Bus Office-Excess Cost Reim	\$0	\$0	\$0	\$0	\$0	\$0
	Other Objects Total	\$0	\$0	\$0	\$0	\$0	\$0
	Munis Report Total	\$112,296,658	\$0	\$112,296,658	\$16,458,332	\$89,876,374	\$5,961,952

**Trumbull Board of Education COVID Expense
Report for the Period Ended 9/30/2021**

<u>Account #</u>	<u>Account Description</u>	<u>Actual</u>	<u>Committed/ Expended</u>	<u>Available/ Estimates</u>
<u>COVID Expenses reflected in above expended</u>				
01011200-53230 -COVID	CONSULTANT	\$0	\$0	\$0
01011200-56111 -COVID	SUPPLIES - GENERAL CLASSROOM	\$0	\$0	\$0
01052130-56110 -COVID	SUPPLIES	\$0	\$0	\$0
01331200-51110 -COVID	TEACHERS-CLASSROOM	\$0	\$0	\$0
01401203-51117 -COVID	SUBSTITUTE TEACHERS,TUTORS	\$0	\$0	\$0
01402320-51114 -COVID	DIRECTOR	\$0	\$0	\$0
01421001-57310 -COVID	EQUIPMENT-COMPUTER	\$0	\$0	\$0
01422214-56900 -COVID	PARTS, MAINTENANCE	\$0	\$0	\$0
01422214-57301 -COVID	EQUIPMENT-COMPUTER	\$0	\$0	\$0
01422520-51141 -COVID	CUST./MAINT. - OT - SCHOOL	\$0	\$0	\$0
01422520-56110 -COVID	SUPPLIES	\$0	\$0	\$0
01422520-56900 -COVID	PARTS, MAINTENANCE	\$0	\$0	\$0
01521001-57308 -COVID	FURNITURE	\$0	\$0	\$0
01541001-56111 -COVID	SUPPLIES - GENERAL CLASSROOM	\$0	\$0	\$0
01541001-57308 -COVID	FURNITURE	\$0	\$0	\$0
01551001-57308 -COVID	FURNITURE	\$0	\$0	\$0
01581001-57308 -COVID	FURNITURE	\$0	\$0	\$0
01611016-56111 -COVID	SUPPLIES - GENERAL CLASSROOM	\$0	\$0	\$0
01612400-56110 -COVID	SUPPLIES	\$0	\$0	\$0
01712400-56110 -COVID	SUPPLIES	\$0	\$0	\$0
01712400-57308 -COVID	FURNITURE	\$0	\$0	\$0
01713201-56112 -COVID	SUPPLIES	\$0	\$0	\$0
01802320-51117 -COVID	SUBSTITUTE TEACHERS,TUTORS	\$0	\$0	\$0
01802320-51129 -COVID	OTHER NON-CERTIFIED	\$0	\$0	\$0
01802320-51139 -COVID	SUBSTITUTE TEACHERS,TUTORS	\$0	\$0	\$0
01842610-51140 -COVID	CUST./MAINT. - OT - SCHOOL	\$0	\$0	\$0
01842610-51141 -COVID	CUST./MAINT. - OT - SCHOOL	\$0	\$0	\$0
01842610-51149 -COVID	CUST./MAINT. - OT - SCHOOL	\$0	\$0	\$0
01842610-56130 -COVID	SUPPLIES - CUSTODIAL	\$5,139	\$3,000	(\$8,139)
01852620-51141 -COVID	CUST./MAINT. - OT - SCHOOL	\$0	\$0	\$0
01852631-54300 -COVID	REPAIRS, SERVICE FEES	\$0	\$0	\$0
01852639-56134 -COVID	PARTS AND SUPPLIES-MAINTENANCE	\$0	\$0	\$0
01852639-57307 -COVID	EQUIPMENT	\$0	\$0	\$0
01852644-56134 -COVID	PARTS AND SUPPLIES-MAINTENANCE	\$0	\$0	\$0
COVID Total		5,139	\$3,000	(\$8,139)
Report Total less COVID	\$112,296,658 \$0 \$112,296,658	\$16,453,193.19	\$89,873,374	\$5,970,091
Munis Report Total	\$112,296,658 \$0 \$112,296,658	\$16,458,332	\$89,876,374	\$5,961,952

	Trumbull Board of Education				
	Town 009 Accounts				
	7/1/21 to 9/30/21				
Org#	Description	Budget	Expenditures	Encumbrances	Balance
09002611	Electricity	24,000	6,000	-	18,000
09005000	Community Services-Custodian Reg Pay	1,000	-	-	1,000
09005000	Community Services-Custodian OT Pay	80,688	10,826	-	69,862
09005000	Community Services-Custodian OT Pay-COVID	20,500	-	-	20,500
09006001	Non Public Schools - Teachers	100,291	8,292	99,510	(7,511)
09006200	Community Services - HC Pool Employee	59,400	13,131	44,512	1,757
09006200	Community Services - HC Pool Supplies	15,151	322	776	14,053
09007001	Non Public Transportation-Admin	15,270	4,011	10,886	373
09007001	Non Public Transportation-Secretary	15,581	4,092	11,108	381
09007001	Non Public Transportation-Bus Routes	925,547	3,644	35,262	886,641
	Total Town 009 Fund	1,257,428	50,318	202,054	1,005,056

10/18/2021 13:19
1791pbri

TRUMBULL BOE, CT
ACCOUNT SUMMARY TRIAL BALANCE FOR FY22/SEP TO SEP
FUND

P 1
glatrbal

ACCOUNT ACCOUNT NAME	BEG. BALANCE	DEBITS	CREDITS	NET CHANGE	END BALANCE
100 -00-0000-10410 - SA CASH ACCT - PEOPLES BANK	269,553.49	25,073.76	9,124.93	15,948.83	285,502.32
100 -00-0000-14004 - DUE FROM 205 FUND	44.52	.00	.00	.00	44.52
100 -00-0000-20032 - THS Model Congress	-3,806.75	.00	.00	.00	-3,806.75
100 -00-0000-20068 - MATH HONOR SOCIETY	-1,406.06	.00	.00	.00	-1,406.06
100 -00-0000-20082 - THS ORCHESTRA	-741.60	.00	.00	.00	-741.60
100 -00-0000-20101 - THS LIBRARY CLUB	-3,487.45	.00	.00	.00	-3,487.45
100 -00-0000-20110 - THS Pink Ribbon	-1,357.00	.00	.00	.00	-1,357.00
100 -00-0000-20130 - THS BOOK STORE	-3,199.78	.00	.00	.00	-3,199.78
100 -00-0000-20133 - THS NEWSPAPER	-108.01	.00	.00	.00	-108.01
100 -00-0000-20139 - THS TRILLIUM YEARBOOK	-15,992.39	.00	.00	.00	-15,992.39
100 -00-0000-20152 - HILLCREST MIDDLE SCHOOL	-14,837.41	675.00	2,508.21	-1,833.21	-16,670.62
100 -00-0000-20156 - MADISON MIDDLE SCHOOL	-3,731.65	1,312.21	3,140.75	-1,828.54	-5,560.19
100 -00-0000-20163 - THS Class of 2016	-2,759.45	2,759.45	.00	2,759.45	.00
100 -00-0000-20164 - THS Class of 2017	-5,343.71	.00	.00	.00	-5,343.71
100 -00-0000-20165 - THS Class of 2018	-8,098.26	.00	.00	.00	-8,098.26
100 -00-0000-20166 - THS Class of 2019	-2,291.64	.00	.00	.00	-2,291.64
100 -00-0000-20167 - THS Class of 2020	-13,251.30	.00	.00	.00	-13,251.30
100 -00-0000-20168 - THS Class of 2021	-8,009.51	.00	.00	.00	-8,009.51
100 -00-0000-20169 - THS Class of 2022	-830.00	.00	3,441.00	-3,441.00	-4,271.00
100 -00-0000-20170 - THS Class of 2023	-1,121.00	.00	.00	.00	-1,121.00
100 -00-0000-20171 - THS Class of 2024	-1,500.00	.00	.00	.00	-1,500.00
100 -00-0000-20172 - THS Class of 2025	-1,000.00	.00	.00	.00	-1,000.00
100 -00-0000-20180 - THS VOAG FUTURE FARMERS	-1,391.69	.00	.00	.00	-1,391.69
100 -00-0000-20190 - THS VOAG FARM	-24,042.64	898.73	1,407.24	-508.51	-24,551.15
100 -00-0000-20251 - BOOTH HILL SCHOOL	-3,646.49	.00	1,025.00	-1,025.00	-4,671.49
100 -00-0000-20252 - FRENCHTOWN SCHOOL	-3,789.02	156.96	6.09	150.87	-3,638.15
100 -00-0000-20253 -					

10/18/2021 13:19
1791pbri

TRUMBULL BOE, CT
ACCOUNT SUMMARY TRIAL BALANCE FOR FY22/SEP TO SEP
FUND

P 2
glatrbal

ACCOUNT ACCOUNT NAME	BEG. BALANCE	DEBITS	CREDITS	NET CHANGE	END BALANCE
DANIELS FARM	-501.57	.00	.00	.00	-501.57
100 -00-0000-20254 -					
MIDDLEBROOK SCHOOL	-4,640.97	949.75	300.00	649.75	-3,991.22
100 -00-0000-20255 -					
JANE RYAN SCHOOL	-410.83	.00	.00	.00	-410.83
100 -00-0000-20258 -					
TASHUA SCHOOL	-7,779.39	.00	122.27	-122.27	-7,901.66
100 -00-0000-20510 -					
THS STUDENT COUNCIL	-5,371.03	.00	.00	.00	-5,371.03
100 -00-0000-20550 -					
GENERAL FUND	-2,910.47	288.83	.00	288.83	-2,621.64
100 -00-0000-20599 -					
THS HISTORY HONOR SOCIETY	-470.91	.00	.00	.00	-470.91
100 -00-0000-20603 -					
THS DECA (MARKETING EDUCATION)	-7,792.19	1,864.35	2,431.00	-566.65	-8,358.84
100 -00-0000-20604 -					
THS BAND	-967.02	.00	.00	.00	-967.02
100 -00-0000-20605 -					
THS KEY CLUB	-477.26	.00	.00	.00	-477.26
100 -00-0000-20606 -					
THS BEST BUDDIES	-1,286.90	.00	.00	.00	-1,286.90
100 -00-0000-20607 -					
THS HOME ECON. CLUB	-2.23	.00	.00	.00	-2.23
100 -00-0000-20608 -					
THS LOST TEXTBOOKS	-6,195.70	.00	.00	.00	-6,195.70
100 -00-0000-20609 -					
THS Creative Minds	-2,572.87	.00	.00	.00	-2,572.87
100 -00-0000-20611 -					
THS ACADEMIC DECATHLON	-3,167.50	.00	.00	.00	-3,167.50
100 -00-0000-20613 -					
THS LATIN CLUB	-144.03	.00	.00	.00	-144.03
100 -00-0000-20614 -					
THS CHORAL GROUP	-4.95	.00	.00	.00	-4.95
100 -00-0000-20615 -					
THS ITALIAN CLUB	-987.96	.00	.00	.00	-987.96
100 -00-0000-20617 -					
THS FUTURE BUSINESS LEADERS	-2,863.86	.00	.00	.00	-2,863.86
100 -00-0000-20620 -					
THS FRENCH CLUB	-952.64	.00	.00	.00	-952.64
100 -00-0000-20621 -					
THS MISCELLANEOUS	-4,652.55	2,000.74	289.83	1,710.91	-2,941.64
100 -00-0000-20622 -					
THS IN/OUT	-3,210.36	57.08	.00	57.08	-3,153.28
100 -00-0000-20624 -					
THS SPANISH CLUB	-1,062.97	.00	.00	.00	-1,062.97
100 -00-0000-20625 -					
THS SODA MACHINE	-288.83	.00	.00	.00	-288.83
100 -00-0000-20627 -					
THS World Lang. HONOR SOCIETIES	-1,972.01	.00	.00	.00	-1,972.01
100 -00-0000-20628 -					
THS A.V. CLUB	-172.13	.00	.00	.00	-172.13
100 -00-0000-20629 -					
THS SUNSHINE FUND	-1,111.73	.00	.00	.00	-1,111.73

10/18/2021 13:19
1791pbri

TRUMBULL BOE, CT
ACCOUNT SUMMARY TRIAL BALANCE FOR FY22/SEP TO SEP
FUND

P 3
glatrbal

ACCOUNT ACCOUNT NAME	BEG. BALANCE	DEBITS	CREDITS	NET CHANGE	END BALANCE
100 -00-0000-20630 - THS SKI CLUB	-58.33	.00	.00	.00	-58.33
100 -00-0000-20631 - THS SOAR Enterprises	-2,800.40	.00	.00	.00	-2,800.40
100 -00-0000-20633 - THS WE THE PEOPLE	-51.96	.00	.00	.00	-51.96
100 -00-0000-20637 - THS Ethics Club	177.95	.00	.00	.00	177.95
100 -00-0000-20639 - THS MODEL U.N. CLUB	-1,901.80	.00	.00	.00	-1,901.80
100 -00-0000-20640 - THS INTERACT CLUB	-57.24	.00	.00	.00	-57.24
100 -00-0000-20641 - THS THESPIAN SOCIETY	-13,890.19	348.22	.00	348.22	-13,541.97
100 -00-0000-20642 - THS Youth to Youth	-1,051.93	.00	.00	.00	-1,051.93
100 -00-0000-20643 - THS GRADUATION-CAP & GOWNS	-10,607.91	.00	.00	.00	-10,607.91
100 -00-0000-20644 - THS ROBOTICS CLUB	-1,623.45	.00	.00	.00	-1,623.45
100 -00-0000-20645 - THS LINK CREW LEADERS	-13,931.60	.00	10,692.20	-10,692.20	-24,623.80
100 -00-0000-20646 - THS CHEERLEADING	-5,075.68	.00	.00	.00	-5,075.68
100 -00-0000-20647 - THS FASHION CLUB	-390.12	.00	.00	.00	-390.12
100 -00-0000-20702 - THS PEER LEADERS	-412.43	.00	.00	.00	-412.43
100 -00-0000-20703 - THS PEER MEDIATION CLUB	-3,498.74	.00	.00	.00	-3,498.74
100 -00-0000-20707 - THS NATIONAL HONOR SOCIETY	-907.37	.00	.00	.00	-907.37
100 -00-0000-20708 - THS POETRY	-785.40	.00	.00	.00	-785.40
100 -00-0000-20709 - THS ALT METHODS OF PYMNT	37.77	.00	.00	.00	37.77
100 -00-0000-20710 - THS GIRLS BASKETBALL	-6,613.76	.00	.00	.00	-6,613.76
100 -00-0000-20711 - THS BOYS BASKETBALL	-40.27	.00	.00	.00	-40.27
100 -00-0000-20712 - THS GLOW CLUB	-83.00	.00	.00	.00	-83.00
100 -00-0000-20713 - THS GRAPHIC DESIGN	-214.00	.00	.00	.00	-214.00
100 -00-0000-20714 - THS GYMNASTICS	-1,603.02	.00	.00	.00	-1,603.02
100 -00-0000-20715 - THS BUS.ED.ENTREPRENEUR	-998.85	.00	.00	.00	-998.85
100 -00-0000-20718 - THS GIRLS CROSS COUNTRY	-22.25	.00	.00	.00	-22.25
100 -00-0000-20719 - THS GOLF	-566.95	.00	.00	.00	-566.95
100 -00-0000-20726 -					

10/18/2021 13:19
1791pbri

TRUMBULL BOE, CT
ACCOUNT SUMMARY TRIAL BALANCE FOR FY22/SEP TO SEP
FUND

P 4
glatrbal

ACCOUNT ACCOUNT NAME	BEG. BALANCE	DEBITS	CREDITS	NET CHANGE	END BALANCE
THS GIRLS INDOOR TRACK	177.98	.00	.00	.00	177.98
100 -00-0000-20727 -					
THS BOYS INDOOR TRACK	-2,276.96	.00	.00	.00	-2,276.96
100 -00-0000-20728 -					
THS MOCK TRIAL	-161.46	.00	.00	.00	-161.46
100 -00-0000-20732 -					
THS GIRLS OUTDOOR TRACK	-1,269.74	.00	.00	.00	-1,269.74
100 -00-0000-20733 -					
THS GIRLS TENNIS	-3,060.62	.00	.00	.00	-3,060.62
100 -00-0000-20810 -					
Trumbull Football Alumni Assoc	-1,000.00	.00	.00	.00	-1,000.00
100 -00-0000-24004 -					
Due to Fund 001/Town	-11,639.61	.00	2,141.18	-2,141.18	-13,780.79
100 -00-0000-24008 -					
Due to Fund 205/BOE Programs	4,317.00	244.62	.00	244.62	4,561.62
100 -00-0000-29280 -					
ACCOUNTS PAYABLE	.00	11,266.11	11,266.11	.00	.00
<hr/>					
TOTALS FOR FUND 100					
STUDENT ACTIVITY FUND	.00	47,895.81	47,895.81	.00	.00
<hr/>					
REPORT TOTALS	.00	47,895.81	47,895.81	.00	.00

** END OF REPORT - Generated by Peg Brindisi **

10/18/2021 13:51
1791pbri

TRUMBULL BOE, CT
YEAR-TO-DATE BUDGET REPORT

P 1
glytdbud

FOR 2022 03

	ORIGINAL APPROP	TRANFRS/ ADJSTMTS	REVISED BUDGET	YTD EXPENDED	ENCUMBRANCES	AVAILABLE BUDGET	PCT USED
2009010 IDEA-611 20977	0	150,655	150,655	120,869.95	1,210,624.23	-1,180,838.94	883.8%
2009011 IDEA-611 NP 20977	0	12,481	12,481	2,833.76	34,005.11	-24,357.87	295.2%
2009080 TITLE III-A 20868	0	4,654	4,654	2,223.04	26,676.42	-24,245.96	621.0%
2009081 Title III-A NP	0	8,882	8,882	.00	.00	8,882.00	.0%
2009112 NP ESSER-Covid	0	17,018	17,018	.00	285.06	16,732.71	1.7%
2009120 ESSER II	0	765,457	765,457	52,668.19	536,303.95	176,484.90	76.9%
2009121 ESSER ARP	0	0	0	32,581.00	390,971.88	-423,552.88	100.0%
2009140 TITLE I 20679	0	93,319	93,319	15,141.92	75,741.56	2,435.87	97.4%
2009141 TITLE I NP	0	901	901	.00	.00	901.28	.0%
2009300 TITLE IV-A 20873	0	11,032	11,032	.00	.00	11,031.70	.0%
2009301 TITLE IV-A NP 20873	0	4,134	4,134	577.00	405.00	3,152.30	23.8%
2009350 HEADSTART ABCD OCT-SEPT	0	62,276	62,276	53,026.89	251,134.03	-241,885.40	488.4%
2009370 HEAD START FOOD	0	3,956	3,956	482.00	.00	3,473.85	12.2%
2009450 IDEA PRE-K 20983	0	41,894	41,894	3,212.64	32,025.58	6,655.89	84.1%
2009460 OPEN CHOICE	0	240,139	240,139	6,326.88	15,747.82	218,064.08	9.2%
2009470 PERKINS GRANT 20742	0	370	370	.00	.00	370.40	.0%
2009480 TITLE II PART A 20858	0	30,432	30,432	3,808.96	45,707.52	-19,084.66	162.7%
2009481 TITLE II-A NP 20858	0	33,816	33,816	1,156.00	.00	32,660.22	3.4%
2009505 TPAUD-DFC	0	45,477	45,477	15,216.69	19,624.67	10,635.79	76.6%
2009507 TPAUD-Opioid Prevention	0	3,526	3,526	2,389.97	1,135.86	.00	100.0%
2009520 MAGNET TRANSPORTATION	0	72,800	72,800	.00	.00	72,800.00	.0%
2009700 CRF Grant -Coronavirus Reli	0	25,861	25,861	-18,127.19	43,987.73	.00	100.0%
2009710 SPED Stipend-COVID 19	0	19,427	19,427	1,469.47	.00	17,957.53	7.6%
GRAND TOTAL	0	1,648,506	1,648,506	295,857.17	2,684,376.42	-1,331,727.19	180.8%

** END OF REPORT - Generated by Peg Brindisi **

ACCOUNT ACCOUNT NAME	BEG. BALANCE	DEBITS	CREDITS	NET CHANGE	END BALANCE
300 -00-0000-10400 - CASH	127,722.83	100.00	.00	100.00	127,822.83
300 -00-0000-14000 - DUE TO/FROM BOE	742.05	47.35	.00	47.35	789.40
300 -00-0000-31510 -BREW FB-Brewster	-188.93	.00	.00	.00	-188.93
300 -00-0000-31510 -BURK FB-Peter Burke	-7,920.92	.00	.00	.00	-7,920.92
300 -00-0000-31510 -CAPO FB-K. Capobianco	-1,834.23	.00	.00	.00	-1,834.23
300 -00-0000-31510 -CASS FB-Donna Cassidy	-11,419.63	.00	.00	.00	-11,419.63
300 -00-0000-31510 -CITI FB-Citizenship/Holdsworth	-39.52	.00	.00	.00	-39.52
300 -00-0000-31510 -CURT FB-Mary Curtiss	-6,955.73	.00	.00	.00	-6,955.73
300 -00-0000-31510 -DICK FB-Samuel Dick	-1,099.97	.00	.00	.00	-1,099.97
300 -00-0000-31510 -GRIN FB-Ran Grinnell	-1,090.08	.00	.00	.00	-1,090.08
300 -00-0000-31510 -HAMP FB-Clare Hampford	-3,878.83	.00	.00	.00	-3,878.83
300 -00-0000-31510 -HART FB-G. Hartz	-9.95	.00	.00	.00	-9.95
300 -00-0000-31510 -KLEI FB-Klein/Danaher	-3,231.60	.00	.00	.00	-3,231.60
300 -00-0000-31510 -LORI FB-Lorimer	-77.96	.00	.00	.00	-77.96
300 -00-0000-31510 -MAIN FB-Dr. Gloria Maina	-555.03	.00	.00	.00	-555.03
300 -00-0000-31510 -MALL FB-Frances S. Mallett	-1,161.60	.00	.00	.00	-1,161.60
300 -00-0000-31510 -MCDO FB-Loretta McDougall	-13,177.89	.00	.00	.00	-13,177.89
300 -00-0000-31510 -MRAZ FB-Karen Mraz	-9,348.60	.00	.00	.00	-9,348.60
300 -00-0000-31510 -NATI FB-National Merit	-535.59	.00	.00	.00	-535.59
300 -00-0000-31510 -PASC FB-Ralph Pascale Memorial	-517.43	.00	.00	.00	-517.43
300 -00-0000-31510 -PHNA FB-PHNA Scholarship	-1,001.21	.00	.00	.00	-1,001.21
300 -00-0000-31510 -R-BRE FB-Restricted Brewster	-1,685.00	.00	.00	.00	-1,685.00
300 -00-0000-31510 -R-DIC FB-Restricted S. Dick	-10,000.00	.00	.00	.00	-10,000.00
300 -00-0000-31510 -R-PHN FB-Restricted PHNA	-8,000.00	.00	.00	.00	-8,000.00
300 -00-0000-31510 -R-ROS FB-Restricted Rossomando	-5,190.00	.00	.00	.00	-5,190.00
300 -00-0000-31510 -R-SIM FB-Restricted Simses	-2,500.00	.00	.00	.00	-2,500.00
300 -00-0000-31510 -R-STO					

ACCOUNT ACCOUNT NAME	BEG. BALANCE	DEBITS	CREDITS	NET CHANGE	END BALANCE
FB-Restricted R. Stowe	-2,200.00	.00	.00	.00	-2,200.00
300 -00-0000-31510 -R-ZIN					
FB Restricted-Zink	-10,000.00	.00	.00	.00	-10,000.00
300 -00-0000-31510 -RESN					
FB-Jill Resnick Scholarship	-16,361.63	.00	.00	.00	-16,361.63
300 -00-0000-31510 -ROSS					
FB-R. Rossomando	-950.27	.00	.00	.00	-950.27
300 -00-0000-31510 -SEAM					
FB-Dick Seaman	-4,536.61	.00	.00	.00	-4,536.61
300 -00-0000-31510 -SIMS					
FB-R. Simses	-304.65	.00	.00	.00	-304.65
300 -00-0000-31510 -STOW					
FB-R. Stowe	-268.30	.00	.00	.00	-268.30
300 -00-0000-31510 -THSET					
FB-THS Scholarship	-1,110.00	.00	.00	.00	-1,110.00
300 -00-0000-31510 -VILL					
FB-Jennie Villano	-210.91	.00	.00	.00	-210.91
300 -00-0000-31510 -ZINK					
FB-Zink Scholarship	-1,102.81	.00	.00	.00	-1,102.81
300 -00-0000-40151 -					
INTEREST INCOME	.00	.00	47.35	-47.35	-47.35
300 -00-0000-40400 -					
REVENUE	.00	.00	100.00	-100.00	-100.00
TOTALS FOR FUND 300					
SCHOLARSHIP FUND	.00	147.35	147.35	.00	.00
REPORT TOTALS	.00	147.35	147.35	.00	.00

** END OF REPORT - Generated by Peg Brindisi **

<u>Object Description</u>	<u>Code</u>	<u>3.81% Budget</u>	<u>3.00% Budget</u>	<u>Difference</u>	<u>Adjustment</u>
<u>Salaries</u>	<u>100</u>				
Admin/Supervisors	110	\$4,412,445	\$4,672,445	\$260,000	HR Director, Director of Operations
Teachers	120	\$54,153,505	\$54,603,505	\$450,000	Net Teaching Positions
Custodians/Maintenance	130	\$3,712,660	\$3,712,660	\$0	
Tech Support	140	\$534,412	\$534,412	\$0	
Admin Support	150	\$2,753,638	\$2,710,804	-\$42,834	Remove additional P/R person; Alicia = +0.25 FTE
Paras & Aides	160	\$4,369,946	\$4,369,946	\$0	
Substitutes	170	\$872,435	\$872,435	\$0	
Coaches & Advisors	180	\$695,045	\$695,045	\$0	
Salaries Other	190	\$1,735,748	\$1,785,748	\$50,000	Data Analyst
Misc Salary Items	195	\$463,668	\$308,668	-\$155,000	Admin - Retiree payments
Salaries Total		\$73,703,502	\$74,265,668	\$562,166	
<u>Benefits</u>	<u>200</u>				
Health Insurance	210	\$16,221,647	\$16,201,647	-\$20,000	Eliminated benefits for additional payroll person
FICA	220	\$1,882,323	\$1,882,323	\$0	
Other Insurance	280	\$135,518	\$135,518	\$0	
Benefits Other	290	\$193,595	\$193,595	\$0	
Benefits Total		\$18,433,083	\$18,413,083	-\$20,000	
<u>Services-Prof & Technical</u>					
Professional Devt	320	\$148,950	\$148,950	\$0	
Legal	330	\$280,000	\$260,000	-\$20,000	Legal (SpEd + Regular, each -\$10,000)
Service Contracts	340	\$420,562	\$415,087	-\$5,475	PPS - Purchased Services
Consultants	360	\$225,000	\$225,000	\$0	
Other Prof Services	390	\$452,900	\$452,900	\$0	
Services-Prof & Technical Total		\$1,527,412	\$1,501,937	-\$25,475	
<u>Services-Property</u>					
Utilities	410	\$1,329,000	\$1,289,000	-\$40,000	Electricity reduced
Energy	415	\$578,489	\$563,489	-\$15,000	Gas reduced
Repairs & Svc Fees	430	\$375,700	\$375,700	\$0	
Communications	440	\$275,250	\$275,250	\$0	
Copiers	445	\$265,000	\$265,000	\$0	
Bldg Improvements	450	\$30,000	\$30,000	\$0	
Other Purch'd Property Svcs	490	\$147,900	\$147,900	\$0	
Services-Property Total		\$3,001,339	\$2,946,339	-\$55,000	
<u>Services-Purchased Other</u>					
	Transp	\$6,152,707	\$6,152,707	\$0	
Postage	530	\$40,000	\$40,000	\$0	
Advertising	540	\$1,200	\$1,200	\$0	
Interns	550	\$296,400	\$296,400	\$0	
Tuition	560	\$4,750,000	\$4,750,000	\$0	
Printing	570	\$14,950	\$14,950	\$0	
Other Purch'd Svcs	590	\$177,402	\$177,402	\$0	
Services-Purch'd Other Total		\$11,432,659	\$11,432,659	\$0	
<u>Supplies</u>	<u>600</u>				
Supplies-Teaching	610	\$601,227	\$601,227	\$0	
Supplies-Office	620	\$74,350	\$74,350	\$0	
Supplies-Custodial	630	\$175,000	\$175,000	\$0	
Supplies-Maintenance	635	\$252,000	\$252,000	\$0	
Text & Workbooks	640	\$407,266	\$407,266	\$0	
Subscriptions	645	\$315,545	\$315,545	\$0	
Testing Materials	650	\$134,600	\$134,600	\$0	
Books & A/V	655	\$44,040	\$44,040	\$0	
Software	660	\$119,000	\$119,000	\$0	
Other Supplies	690	\$31,650	\$31,650	\$0	
Supplies Total		\$2,154,678	\$2,154,678	\$0	

<u>Object Description</u>	<u>Code</u>	<u>3.81% Budget</u>	<u>3.00% Budget</u>	<u>Difference</u>	<u>Adjustment</u>
<u>Property</u>	<u>700</u>				
Office Equipment	610	\$850	\$850	\$0	
Office Furniture	620	\$0	\$0	\$0	
Classroom Equipment	630	\$409,131	\$409,131	\$0	
Classroom Furniture	635	\$12,700	\$12,700	\$0	
Bldg Equipment	640	\$178,492	\$148,492	-\$30,000	HVAC, IAQ, Maintenance Vehicle (all -\$10,000)
Other Equipment	645	\$3,500	<u>\$3,500</u>	<u>\$0</u>	
Property Total		\$604,673	\$574,673	-\$30,000	
<u>Other Objects</u>	<u>800</u>				
Dues, Fees and Memberships	810	\$1,287,647	\$876,621	-\$411,026	Loans not needed: New TD Loan = \$198,000
Unemployment	825	\$130,000	<u>\$130,000</u>	<u>\$0</u>	TD Loan #3 = \$129,693
Other Objects	890	\$1,000	<u>\$1,000</u>	<u>\$0</u>	UI Loan = <u>\$ 83,333</u>
Other Objects Total		\$1,418,647	\$1,007,621	-\$411,026 Total =	\$411,026
<u>Miscellaneous</u>	<u>900</u>				
Other-Anticipated Surplus		\$0	\$0	\$0	
Other-Anticipated Excess Cost		<u>\$0</u>	<u>\$0</u>	<u>\$0</u>	
Miscellaneous Total		\$0	\$0	\$0	
Report Total		\$112,275,993	\$112,296,658	\$20,665	
Net FTE Adjustment		\$ 477,166	\$0	-\$477,166	Incremental FTE distributed to salary accounts.
Special Revenue (205) Account Adjustment		\$ 430,000	<u>\$0</u>	<u>-\$430,000</u>	205 Accounts reduced by \$430K in 2020-21
		\$ 907,166	\$	\$ (907,166)	
Report Total		\$ 113,183,159	\$ 112,296,658	\$ (886,501)	

TRUMBULL PUBLIC SCHOOLS

Personnel Account Changes: 3.81% => 3.00%

<u>FTE</u>	<u>New Positions</u>		<u>Account</u>	<u>Amount</u>					
1.00	Math Intervention at MS	\$80,000	01611001-51110	\$80,000	120	110	1.00	Director of Human Resources	\$130,000
0.50	Math Intervention at ES	\$40,000	01541002-51110	\$40,000	120		1.00	Director of Operations	<u>\$130,000</u>
1.00	Literacy Intervention at ES	\$80,000	01521002-51110	\$80,000	120			s/t	\$260,000
1.00	Wellness at THS	\$65,000	01711019-51110	\$65,000	120				
0.25	Business Office	\$17,166	01912520-51130	\$17,166	150	120	1.00	Math Intervention at MS	\$80,000
	Additional Payroll Person		01912520-51130	-\$60,000	150		0.50	Math Intervention at ES	\$40,000
1.00	School Psychologist	\$65,000	01062140-51111	\$65,000	120		1.00	Literacy Intervention at ES	\$80,000
1.00	Speech and Language Pathologist	\$65,000	01082150-51111	\$65,000	120		1.00	Wellness at THS	\$65,000
0.50	SPED at Booth Hill	\$40,000	01161200-51110	\$40,000	120		1.00	School Psychologist	\$65,000
1.00	Director of Human Resources	\$130,000	01402320-51114	\$130,000	110		1.00	Speech and Language Pathologist	\$65,000
1.00	Director of Operations	\$130,000	01822230-51125	\$130,000	110		0.50	SPED at Booth Hill	\$40,000
1.00	Data Analyst	\$50,000	01922530-51229	\$50,000	190		1.00	Bilingual Tutor	\$40,000
1.00	Bilingual Tutor	\$40,000	01402210-51110	\$40,000	120		1.00	Grade 2 Frenchtown	\$65,000
<u>1.00</u>	<u>Grade 2 Frenchtown</u>	<u>\$65,000</u>	<u>01521001-51110</u>	<u>\$65,000</u>	<u>120</u>		1.00	Booth Hill	-\$65,000
11.25		\$867,166		\$807,166			2.00	Daniels Farms	-\$130,000
	<u>Positions Eliminated</u>						1.00	Jane Ryan	-\$65,000
1.00	Booth Hill	-\$65,000	01511001-51110	-\$65,000	120		1.00	Middlebrook	-\$65,000
2.00	Daniels Farms	-\$130,000	01531001-51110	-\$130,000	120		1.00	THS	<u>-\$65,000</u>
1.00	Jane Ryan	-\$65,000	01551001-51110	-\$65,000	120				\$150,000
1.00	Middlebrook	-\$65,000	01541001-51110	-\$65,000	120		01912520-51196	Teacher turnover	<u>\$300,000</u>
<u>1.00</u>	<u>THS</u>	<u>-\$65,000</u>	<u>01711001-51110</u>	<u>-\$65,000</u>	<u>120</u>			s/t	\$450,000
6.00		-\$390,000		-\$390,000					
						150	0.25	Business Office	\$17,166
							-1.00	Additional Payroll Person	<u>-\$60,000</u>
5.25		\$477,166		\$417,166					-\$42,834
						190	1.00	Data Analyst	\$50,000

Note: Teacher turnover was originally budgeted at -\$300,000; however, there was no history to base this on, so it was eliminated.