



**WEST HARTFORD TOWN CENTER
INFRASTRUCTURE MASTER PLAN: FALL
2022 STREET DESIGN WORKSHOP
SUMMARY**

November 4, 2022

Prepared for:
Town of West Hartford

Prepared by:
Stantec

Project Number: 192311344

1 Fall Street Design Workshop Summary

The Stantec team and the Town of West Hartford facilitated a fall workshop both online and in-person with the following objectives:

- Project awareness
- Confirm overall project goals with community
- Provide opportunity for public to comment on issues / opportunities

The workshop consisted of an in-person event on September 21 as well as two online components that ran from October 1 to October 28, 2022. The main in-person event took place at the Town Hall Auditorium from 11:00 am to 3:00 pm and 5:00 pm to 7:00 pm with a satellite pop-up location at the corner of Farmington Avenue and LaSalle Road from 11:30 am to 1:30 pm and 5:00 pm to 7:00 pm. Appendix A summarizes participation, which included about 130 visitors to the in-person open house and pop-up tent, about 500 respondents to the project goals and street design survey, and nearly 300 active participants on the interactive map.

2 Findings

The sections below summarize key takeaways from the workshops, including confirmation of and adjustments to design goals, as well as themes from public conversations and comments on the variety of workshop exercises.

2.1 Project Goals

Participants both online and in-person had the chance to offer comments on project goals, which were developed based on goals from the Town's 2020 Plan of Conservation and Development (POCD) and West Hartford Town Center Initiative (2016).

Most respondents confirmed that the goals are appropriate to guide the Infrastructure Master Plan and street designs. However, the input did provide some guidance to tweak the goals for the Plan as indicated in red, below:

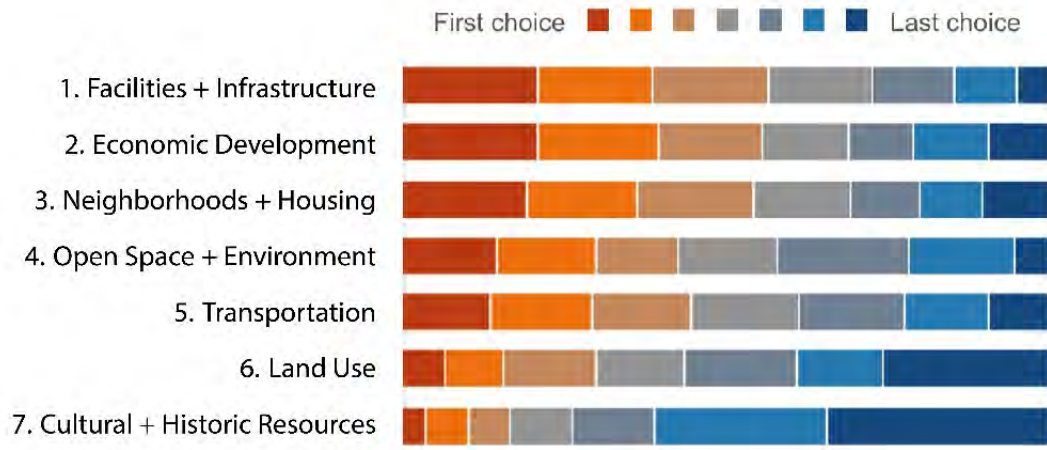
- **Facilities + Infrastructure:** Promote practices that will maintain and modernize Town facilities and infrastructure in order to meet the evolving needs of the community in sustainable ways and recognize the need to provide services harmoniously with West Hartford's place in the greater Hartford Region and State at large.
- **Neighborhoods + Housing:** Enhance and maintain West Hartford's existing neighborhoods and encourage diversity of housing types and costs to provide access and availability of **affordable** housing options to current and future residents **of all ages**.
- **Economic Development:** Promote growth and retention of existing businesses and development of new business opportunities to strengthen the community's tax base in an innovative manner, while preventing and protecting the residential character of the surrounding neighborhoods.

West Hartford Town Center Infrastructure Master Plan: Fall 2022 Street Design Workshop Summary

- **Transportation:** Promote an integrated and balanced transportation system **which prioritizes safety**, including “complete streets,” to improve traffic flow, **optimize and** enhance parking opportunities, promote public transportation and car-pooling; enhance traffic calming efforts, pedestrian and bicyclist **safety and** access; and meet the needs of the next generation of transportation technologies and infrastructure.
- **Open Space + Environment:** Preserve, protect, enhance and promote our open space and our fragile natural systems in concert with managing responsible growth and development.
- **Cultural and Historic Resources:** Preserve, protect, enhance and promote the cultural and historic resources of West Hartford.
- **Land Use:** Sustain and preserve the Town of West Hartford as a balanced community, maintaining and promoting neighborhood **character** and open spaces in conjunction with the principles of Smart Growth.

Online participants also had the chance to rank the seven goals in order of priority. The results of the prioritization exercise are shown below. Respondents generally made the Facilities + Infrastructure, Economic Development, and Neighborhoods + Housing goals a high priority while making the Land Use and Cultural + Historic Resources goals a low priority.

Figure 1 Project Goals Survey Results



This chart reflects the responses of the 502 online-only goals survey participants

2.2 Themes

Through the in-person and online components of the workshop, the Project team spoke with a wide array of stakeholders. The table below summarizes these conversations into top considerations for the future.

Stakeholder Feedback Summary	Detailed Concerns	Feedback and Ideas
<p>LaSalle Road should be re-designed to better serve people while preserving access to businesses and reducing traffic impacts elsewhere</p> <ul style="list-style-type: none"> Many participants want to see LaSalle Road fully closed to traffic, while many others want to see it returned to two-way traffic A smaller group of respondents preferred the current one-way design or switching the direction of traffic flow 	<ul style="list-style-type: none"> Pedestrians and bicyclists are not comfortable along LaSalle Businesses rely on vehicles accessing LaSalle Traffic diverted from LaSalle is affecting residential streets elsewhere 	<ul style="list-style-type: none"> Eliminate back-in and angled parking along LaSalle <ul style="list-style-type: none"> Replace with pull-in parking Return LaSalle to two-way traffic <ul style="list-style-type: none"> Eliminate the potential for vehicle traffic diverting to residential streets Allow LaSalle to operate as a major artery Close LaSalle to vehicles <ul style="list-style-type: none"> Replace street space with outdoor dining Create a performance space for music and dance Close from Arapahoe to Farmington Open LaSalle only to delivery vehicles in the early morning Keep LaSalle as currently operating <ul style="list-style-type: none"> Preserve access to businesses for customers and delivery vehicles Keep LaSalle one-way but switch to southbound traffic <ul style="list-style-type: none"> Southbound traffic to prevent Woodrow from excessive traffic Provide additional parking options along LaSalle Preserve outdoor dining along LaSalle Replace barriers along LaSalle with something more aesthetically pleasing Expand sidewalk space along LaSalle Add a midblock crossing on LaSalle

West Hartford Town Center Infrastructure Master Plan: Fall 2022 Street Design Workshop Summary

<p>The Center often does not feel comfortable for people walking</p> <ul style="list-style-type: none"> Few participants opposed improvements to pedestrian infrastructure, however, some participants highlighted the need to maintain efficient traffic flow and outdoor dining installations 	<ul style="list-style-type: none"> Pedestrians are not prioritized at key intersections Sidewalks are uncomfortable for pedestrians and handicapped users Outdoor dining has made walking through the Center more difficult 	<ul style="list-style-type: none"> Widen sidewalks throughout the Center <ul style="list-style-type: none"> Sidewalks along Farmington are particularly narrow and should be widened Make all sidewalks accessible for people with mobility impairments <ul style="list-style-type: none"> The sidewalk along S Main outside the library must be made accessible Ensure that outdoor dining does not result in sidewalks which are narrow and inaccessible Extend pedestrian crossing times, prioritize pedestrians, and improve crossings, specifically: <ul style="list-style-type: none"> Crossing times at S Main must be lengthened Address vehicles not stopping before turning at Woodrow and Ellsworth Add additional crossings across Farmington between Walden and Mountain Improve visibility for pedestrians at the intersection of Woodrow and Arapahoe Eliminate the need for pedestrians to wait multiple cycles to cross the street Create raised crossings and intersections Improve pedestrian visibility at intersections <ul style="list-style-type: none"> Pedestrians at the intersection of Woodrow and Farmington must be more visible to drivers Eliminate parking next to the intersection to improve visibility Improve pedestrian safety at the intersection of Dale and Farmington Add a crosswalk at the intersection of Woodrow and Farmington Replace paver sidewalks to eliminate uneven and unsafe conditions for pedestrians Update sidewalks with bigger and more uniform pavers Ensure that sidewalks and crosswalks are level for mobility-impaired users Ensure that sidewalks and crosswalks are free of snow, water, and ice Repair sidewalks along Brace Rd Build a pedestrian bridge over Main St at the library Improve enforcement of speed limits and traffic regulations in the Center Implement curb extensions, particularly at the intersection of Farmington and Main Build a pedestrian bridge over Trout Brook Dr Install rapid flashing beacons at key intersections to improve pedestrian visibility
---	--	--

West Hartford Town Center Infrastructure Master Plan: Fall 2022 Street Design Workshop Summary

		<ul style="list-style-type: none"> • Create a pedestrian connection between S Main and Blue Back Square • Automate the pedestrian light phase at the intersection of Farmington and Trout Brook
<p>Bicycling through the Center must be safer, more convenient, and more accessible</p> <ul style="list-style-type: none"> • Few participants opposed implementing additional bicycle facilities, which received widespread support 	<ul style="list-style-type: none"> • Biking along major roads in the Center is dangerous and uncomfortable • Not enough bike parking and existing parking is often inaccessible 	<ul style="list-style-type: none"> • Provide additional bike parking options that are accessible, user-friendly <ul style="list-style-type: none"> ○ Bike racks are needed in the Brace Lot ○ Prioritize adding bike parking at Farmington and Walden • Provide more protected and separated bike facilities, including: <ul style="list-style-type: none"> ○ Create a protected bike lane along Farmington ○ Create a protected bike lane along North and South Main ○ Provide a safe connection for bicyclists from the Trout Brook Trail to the Center ○ Replace sharrows with improved bike accommodations along LaSalle ○ Create a safe bike connection from the Center to Downtown Hartford • Improve bicycle accommodations at the intersection of Main and Farmington • Preserve the bike connection between Arapahoe and Memorial • Extend the Trout Brook trail • Enforce no parking in existing bike lanes • Add signage to key bike routes to make drivers more aware of bike traffic • Connect West Hartford to the Hartford Line trains with a protected bike lane • Eliminate all bicycling in the Center and direct bike traffic elsewhere

West Hartford Town Center Infrastructure Master Plan: Fall 2022 Street Design Workshop Summary

<p>Green space and parks in the Center should be expanded and better utilized</p> <ul style="list-style-type: none"> Many participants support expanding Unity Green and/or Veterans Memorial Park by converting existing street space to park space, but some oppose reducing the number of travel lanes and parking opportunities on South Main 	<ul style="list-style-type: none"> Existing green space is inaccessible and underused Not enough green space in the Center Children and young people have few outdoor recreational opportunities in the Center 	<ul style="list-style-type: none"> Amenity ideas: <ul style="list-style-type: none"> Add amenities to existing parks including art and gathering spaces Create a market for vendors, artisans, and street food Create a dog park Create a skate park Provide additional meeting spaces for people Create new spaces for kids to play such as a new playground Create a public square with public activities Add additional trees and benches to sidewalks around the Center Convert excess parking space to green space Improve tree cover in the Center <ul style="list-style-type: none"> Ensure that existing street trees remain healthy Address trees which are overgrown Plant fruit trees in the Center Expand existing offerings: <ul style="list-style-type: none"> Enhance the Veterans Memorial with more greenery Place landscape plantings on Goodman Green Expand Church Green and connect it to the sidewalk on the west side of S Main Improve Trout Brook Trail by adding paths, benches, gardens, and public art Add more seating throughout the Center
---	---	--

West Hartford Town Center Infrastructure Master Plan: Fall 2022 Street Design Workshop Summary

<p>Address excessive traffic and vehicle speeds in and around the Center</p> <ul style="list-style-type: none"> While many participants cited the need to reduce vehicle traffic in the Center, participants highlighted the need to ensure that traffic is not redirected onto residential streets 	<ul style="list-style-type: none"> Car traffic dangerous for pedestrians Excessive traffic on residential streets Key intersections are difficult to navigate and have long vehicle queues 	<ul style="list-style-type: none"> Convert Farmington to two lanes in each direction to reduce traffic Reduce vehicle speeds: <ul style="list-style-type: none"> Narrow lanes widths to lower vehicle speeds Reduce the number of lanes on major roads Reduce speed limits on streets in the Center Improve enforcement of speed limits Implement road diets throughout the Center on streets where vehicle traffic and vehicle speeds are excessive Farmington, Woodrow, and S Main are particularly in need of traffic calming Improve public transportation options in the Center Enforce one-way traffic on LaSalle Intersection improvements: <ul style="list-style-type: none"> Modify signal timing to improve traffic flow Implement No Turn on Red at all intersections Extend the duration of the left turn signal at N Main and Farmington Consider a roundabout at the intersection of Farmington and S Main Consider a roundabout at the intersection of Farmington and Trout Brook Discourage driving through the Center and redirect traffic elsewhere Prevent traffic from being re-directed onto residential streets from main roads
---	---	---

West Hartford Town Center Infrastructure Master Plan: Fall 2022 Street Design Workshop Summary

<p>Parking is needed, but there may be opportunities to reduce and re-design</p> <ul style="list-style-type: none"> Many participants support replacing the existing back-in parking with more intuitive options such as parallel or angled parking, but some support preserving back-in parking for safety reasons Some participants support repurposing existing surface parking lots as green space or housing, however, some participants prioritized maintaining existing parking supply 	<ul style="list-style-type: none"> Too much space in the Center is reserved for parking On-street parking is not user-friendly 	<ul style="list-style-type: none"> Replace back-in parking with options which are more intuitive and less confusing for drivers Return on-street parking on Farmington to parallel parking Residential parking <ul style="list-style-type: none"> Offer residents annual parking passes for parking in the Center Make parking on residential streets by resident permit only Alternate uses for parking spaces: <ul style="list-style-type: none"> Convert parking spaces outside restaurants to short-term spaces for food pick-up Convert excess off-street parking to public space or green space Convert excess off-street parking lots to sites for housing development Convert the Town Center garage into mixed-use development Consider additional parking options: <ul style="list-style-type: none"> Convert Farmington lots to public parking Consider replacing surface lots in the Center with garages Provide more electric vehicle charging spaces throughout the Center Convert Brace Lot to a parking garage Re-open the entrance from the Farmington Lot to the garage Incentivize more parking in garages rather than on-street Connections to/from parking: <ul style="list-style-type: none"> Improve messaging surrounding parking so people know where they can park Build a tram system which can shuttle people from parking lots to the Center Provide better connections for vehicles between surface lots and parking garages Add barriers within parking lots to impede vehicle crossflow Do not offer free monthly parking and discourage driving to the Center to park Provide reserved on-street parking next to the Post Office Limit loading outside businesses outside of designated hours when streets are not busy Beautify parking lots and add more greenery Enforce double-parking
--	--	--

West Hartford Town Center Infrastructure Master Plan: Fall 2022 Street Design Workshop Summary

<p>Interest in a connection to Memorial Road but concern for worsening traffic on residential streets and bicyclist and pedestrian safety</p>	<ul style="list-style-type: none"> • The current passage functions as a comfortable route for cyclists • Concern that any of the options provided will worsen traffic on residential streets 	<ul style="list-style-type: none"> • Do not open the street to vehicle traffic • Provide high quality accommodations for bikes • Provide access to the garage through LaSalle • Ensure the design does not encourage drivers going the wrong way on LaSalle from Farmington • Make Arapahoe a dead-end street so that traffic does not shift to residential streets • Provide a better connection to Blue Back Square • Divert traffic from S Main onto LaSalle • Prevent delivery trucks from blocking traffic at the intersection with LaSalle here • Provide a connection from LaSalle to Raymond
<p>Embrace new forms of development and growth while preserving the character of West Hartford</p>	<ul style="list-style-type: none"> • Encourage new types of development in the Center, including new forms of retail and housing • Maintain West Hartford's feel and brand 	<ul style="list-style-type: none"> • Maintain West Hartford's character as a town, not a city • Improve public outreach and awareness of street design issues in the Center • Maintain the vibrance of West Hartford • Build new affordable housing • Allow backyard accessory dwelling units • Build more retail and limit new restaurants and bars opening • Open more independent stores in the Center, including bookstores and retail • Provide more high-end retail options in the Center • Subsidize a bike rental and bike repair shop in the Center • Address the presence of panhandlers and the unhoused in the Center • Add additional signage to highlight the brand and identity of West Hartford • Improve waste management practices of local businesses to limit the presence and smell of trash on the street

West Hartford Town Center Infrastructure Master Plan: Fall 2022 Street Design Workshop Summary

2.2.1 FEEDBACK LOCATIONS

Figure 2 below reflects the density of issues and opportunities by location within the study area. The majority of issues and opportunities were concentrated along LaSalle Road, Farmington Avenue, and South Main Street, with a particular focus on the intersections of LaSalle and Farmington, Farmington and South Main, and Farmington and Trout Brook.

Figure 2 Heatmap of Map Comments

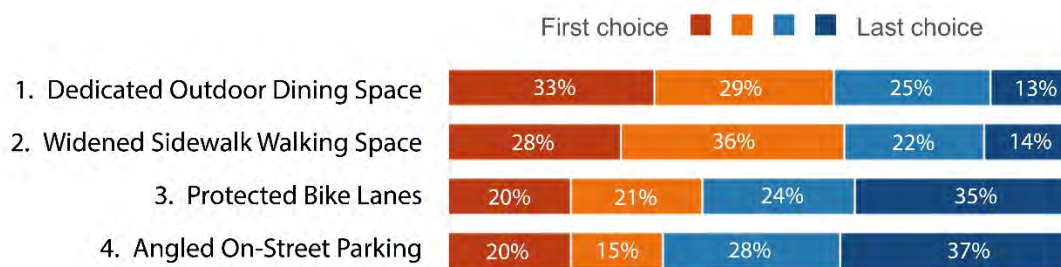


This map reflects the location of the 589 online-only map survey comments

2.2.2 STREET DESIGN OPTIONS RESULTS

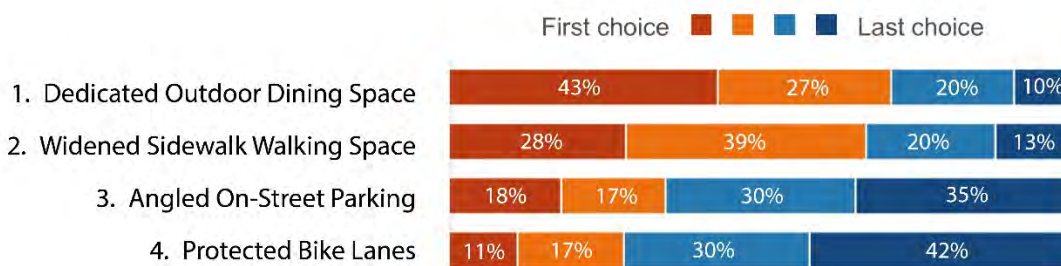
Through an online survey, participants were asked to rank four street design elements to help decide which should be included on a redesigned Farmington Avenue and LaSalle Road. The results of the ranking exercise are shown below. Respondents gave the highest priority to dedicated outdoor dining space on both Farmington Avenue and LaSalle Road, followed by widened sidewalk walking space. Protected bike lanes were given a higher priority than angled on-street parking on Farmington Avenue, while angled on-street parking was prioritized over protected bike lanes on LaSalle Road.

Figure 3 Farmington Avenue – Street Design Options Survey Results



This chart reflects the ranking choices of the 502 online-only street design survey participants

Figure 4 LaSalle Road – Street Design Options Survey Results



This chart reflects the ranking choices of the 502 online-only street design survey participants

Appendix A Who Did We Speak With?

The in-person workshop had an estimated 135 active participants, including about 70 at the town hall open house and about 65 at the pop-up tent. The online interactive map survey had 589 comments left by 295 participants and there were an estimated 3,500 total unique visitors to the map website. The online goal and street design survey had 502 respondents.

A.1 In-Person

About 135 participants attended the workshop in-person and provided input. It is worth noting that as a result of the “pop-up” at the intersection of Farmington and LaSalle, it is likely that many others who were in West Hartford Center are now aware of the project, even if they did not directly participate.

A.2 Online

- 3,499 unique map users (number of unique people viewing the site)
- 295 stakeholders for the map (number of people interacting with the site, i.e., adding comments)
- 589 comments on the interactive map
- 55% of comments on maps are “issues” and 45% are “opportunities”
- 502 respondents for the goals and street design survey
- October 25, 2022 received the highest number of visits to the map

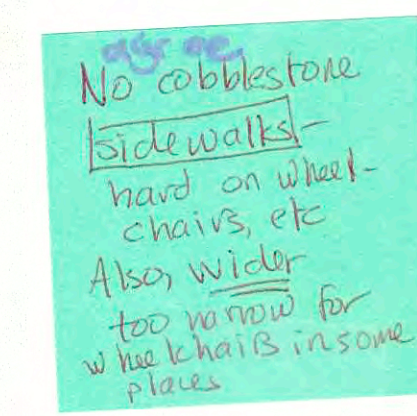
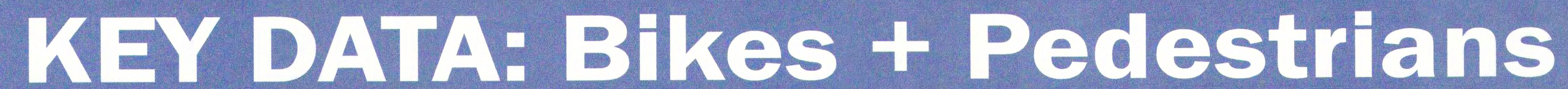
A.2.1 MAP SURVEY METRICS

- Referral Site
 - We-Ha.com (149)
 - Westhartfordct.gov (122)
 - Courant.com (31)
 - Bikewesthartford.org (12)
 - Patch.com (8)
 - Ctinsider.com (3)

Appendix B Outreach Data

B.1 In-Person Workshop Boards







STUDY AREA- Issues + Opportunities

Where do you think the issues and opportunities in the study area are?

Using a pen, please write your thoughts or highlight/draw on the map various...

ISSUES

Wherever you think there is an **issue**, for example:

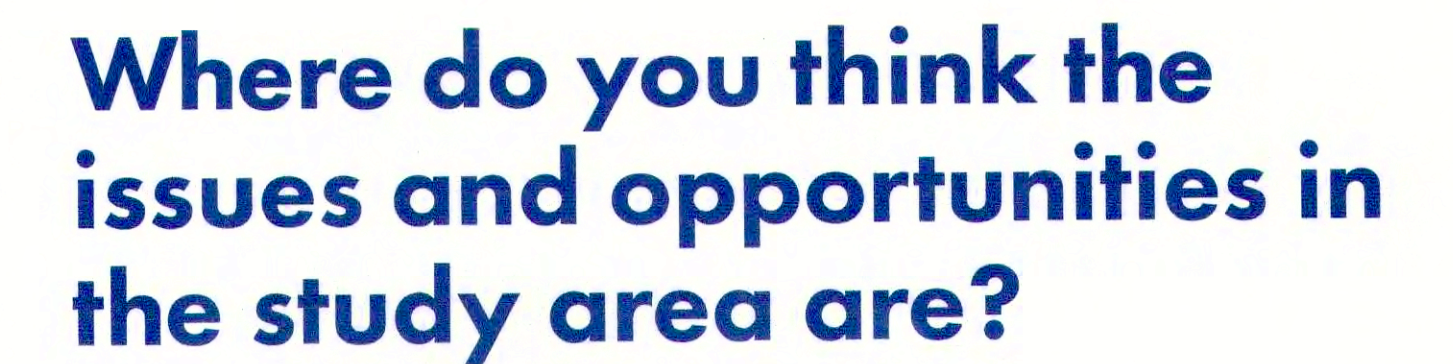
- A place which feels unsafe
- Places in need of maintenance
- Challenging crossings for people walking
- Congested areas

OPPORTUNITIES

Wherever you think there is an **opportunity**, for example:

- A place bicyclists often use that could be supported by better signage
- An area where parking seems underutilized
- A spot that could benefit from more attractive design or features



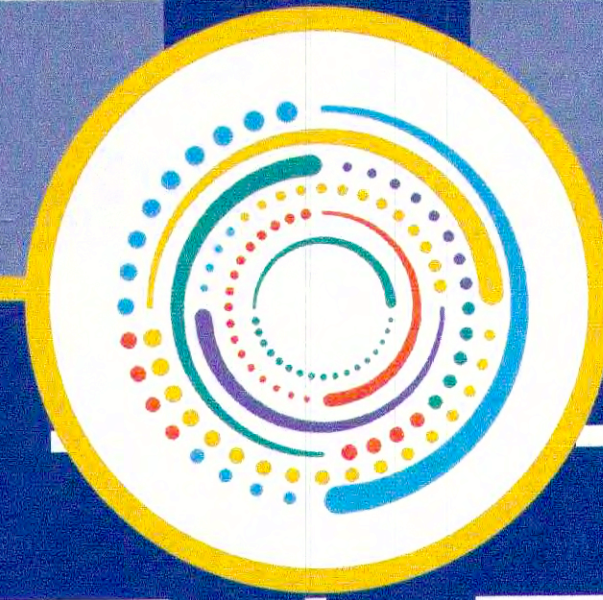


ISSUES

- A place which feels unsafe
- Places in need of maintenance
- Challenging crossings for people walking
- Congested areas

OPPORTUNITIES

- A place bicyclists often use that could be supported by better signage
- An area where parking seems underutilized
- A spot that could benefit from more attractive design or features



STUDY AREA- Issues + Opportunities

Yes! in general - pervasive issue of cars not stopping for crosswalks

Continue expanding Trout Brook Trail - yes please

Where do you think the issues and opportunities in the study area are?

Using a pen, please write your thoughts or highlight/draw on the map various...

ISSUES

Wherever you think there is an **issue**, for example:

- A place which feels unsafe
- Places in need of maintenance
- Challenging crossings for people walking
- Congested areas

OPPORTUNITIES

Wherever you think there is an **opportunity**, for example:

- A place bicyclists often use that could be supported by better signage
- An area where parking seems underutilized
- A spot that could benefit from more attractive design or features

Increase signs on any road that takes access w/ signs or showrooms. otherwise, drivers seem to think bikes don't belong on any street who expect signage.

Memorial connection to CoSalle
MEMORIAL TAKES PRESERVE OFF OTHER SIDE STREETS
GET PEOPLE TO PARK IN LOTS
① No ~~parking~~ parking in bike lanes - yes! enforce this!
② Real bike lanes, not ersatz ones separated, protected

Study Area
Open Space



STUDY AREA- Issues + Opportunities



Where do you think the issues and opportunities in the study area are?

Using a pen, please write your thoughts or highlight/draw on the map various...

ISSUES

Wherever you think there is an **issue**, for example:

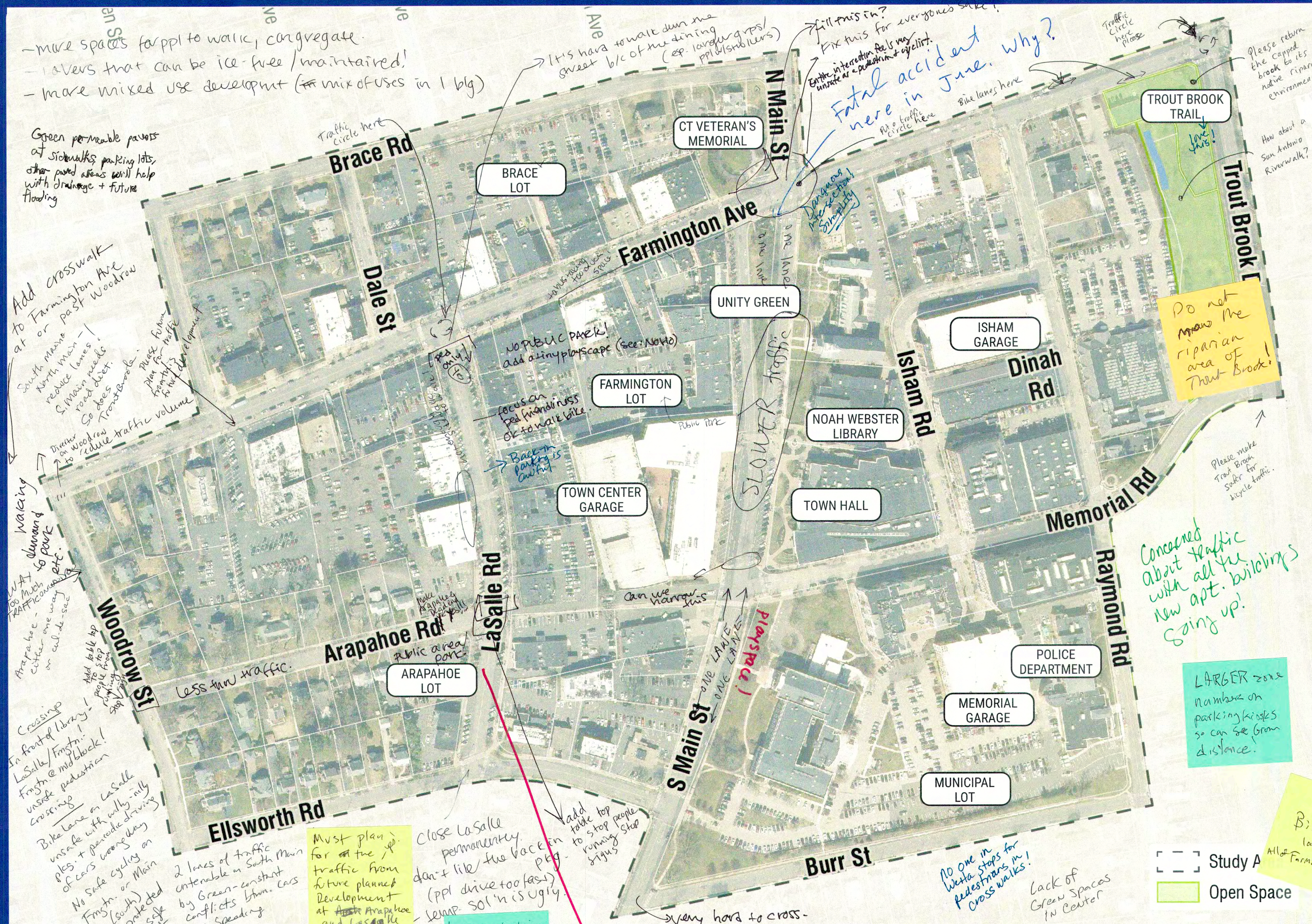
- A place which feels unsafe
- Places in need of maintenance
- Challenging crossings for people walking
- Congested areas

OPPORTUNITIES

Wherever you think there is an **opportunity**, for example:

- A place bicyclists often use that could be supported by better signage
- An area where parking seems underutilized
- A spot that could benefit from more attractive design or features

STUDY AREA- Issues + Opportunities



Where do you think the issues and opportunities in the study area are?

Using a pen, please write your thoughts or highlight/draw on the map various...

ISSUES

Wherever you think there is an **issue**, for example:

- A place which feels unsafe
- Places in need of maintenance
- Challenging crossings for people walking
- Congested areas

OPPORTUNITIES

Wherever you think there is an **opportunity**, for example:

- A place bicyclists often use that could be supported by better signage
- An area where parking seems underutilized
- A spot that could benefit from more attractive design or features

STUDY AREA- Issues + Opportunities



Where do you think the issues and opportunities in the study area are?

Using a pen, please write your thoughts and highlight/draw on the map various...

ISSUES

Wherever you think there is an **issue**, for example:

- A place which feels unsafe
- Places in need of maintenance
- Challenging crossings for people walking
- Congested areas

OPPORTUNITIES

Wherever you think there is an **opportunity**, for example:

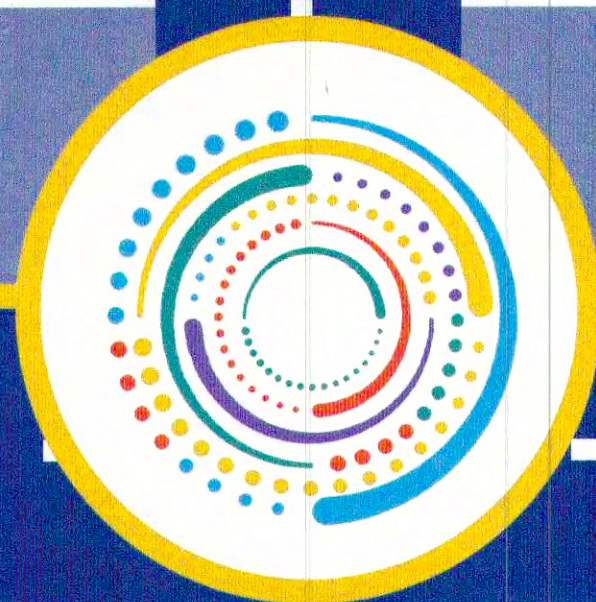
- A place bicyclists often use that could be supported by better signage
- An area where parking seems underutilized
- A spot that could benefit from more attractive design or features

I hate these! Hard to use for wheelchairs, walkers, canes etc

Make it easier/safer for cyclists to go up Memorial + access Center from Trout Brook Trail

Pedestrian cross signals only allow crossing for v2 seconds before turning orange. Not even enough time to look both ways!

Crossing signals should have priority over traffic. Waiting 1st traffic cycle at do cross ~ 24th road is too long.



IDEAS: Streetscape Preferences

As the Town of West Hartford considers improvements to the Town Center, they would like your input on the types of facilities you would like to see. Please help us by using the stickers provided to vote for the features you think are most important.

Placemaking Tools: Which two elements are most important to you?



Outdoor Seating



Safe Lighting



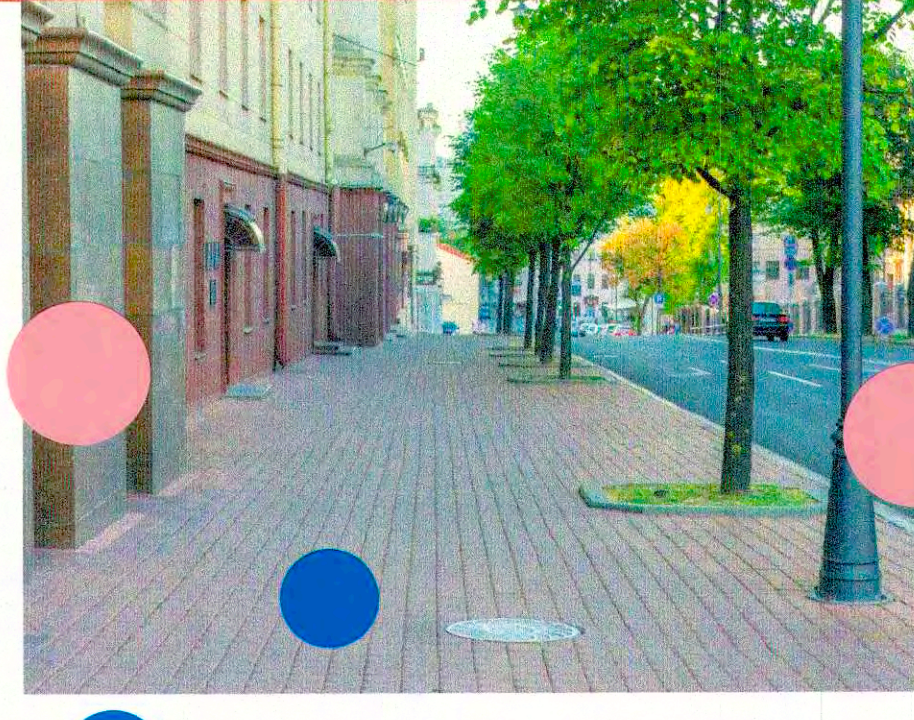
Vibrant and Flexible Public Realm



Public Art

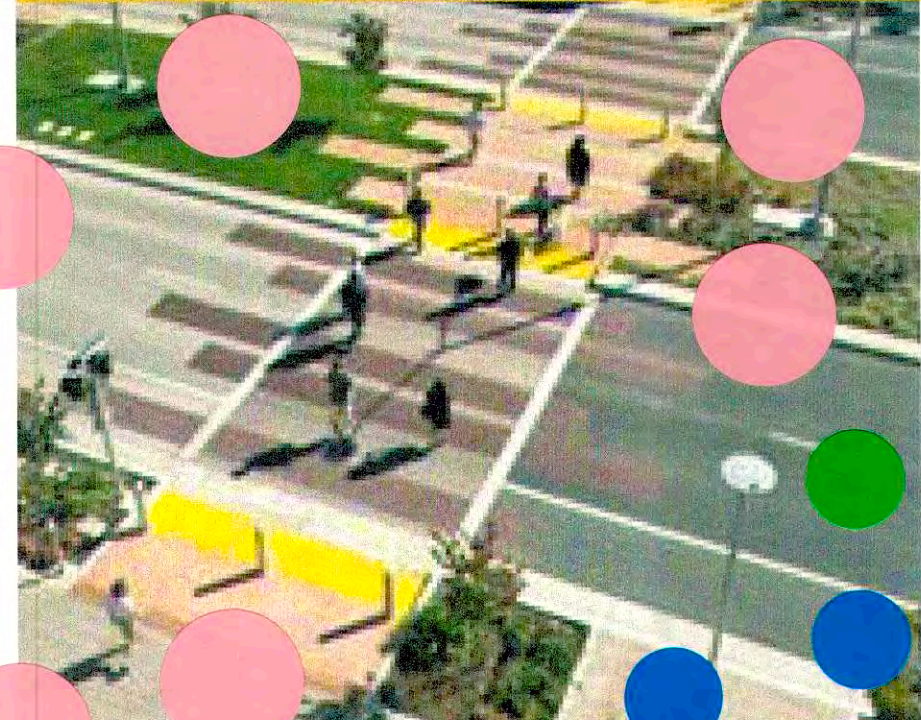


Landmark Elements



Brick/Paver Sidewalks

Crosswalk Treatments: Which two elements are most important to you?



Wide Crosswalks



Pedestrian Refuge Island



Thermoplastic Surfacing



Brick or Pavers with Reflective Striping



Raised Crosswalk



Pedestrian Signal

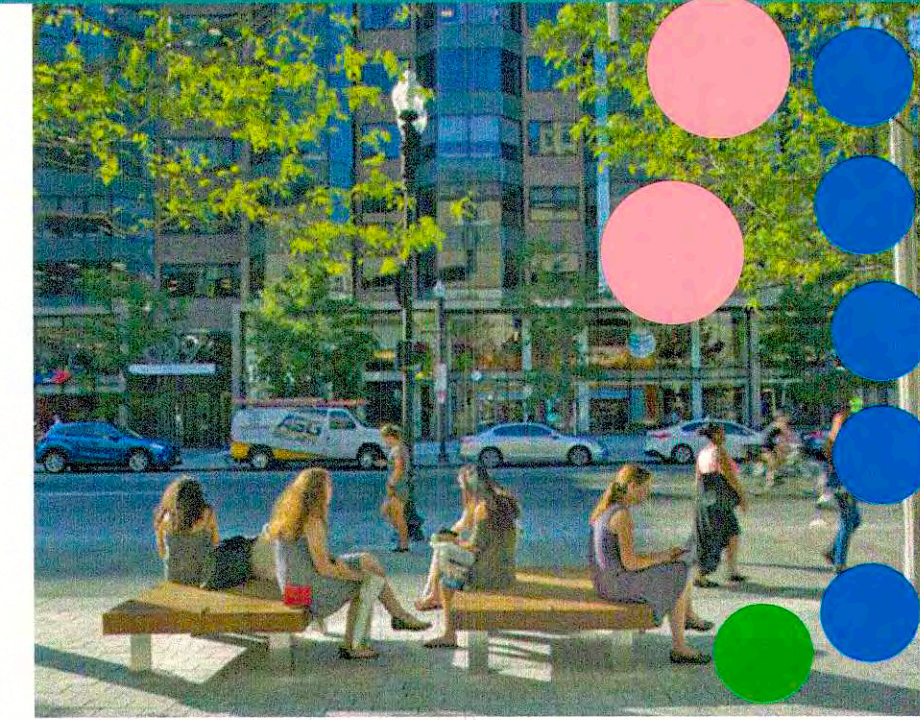
Sidewalks: Which two elements are most important to you?



Defined Street Tree Planting



Green infrastructure at key areas



Communal Seating Areas



Clear pedestrian routes



Integrated seating and planting areas

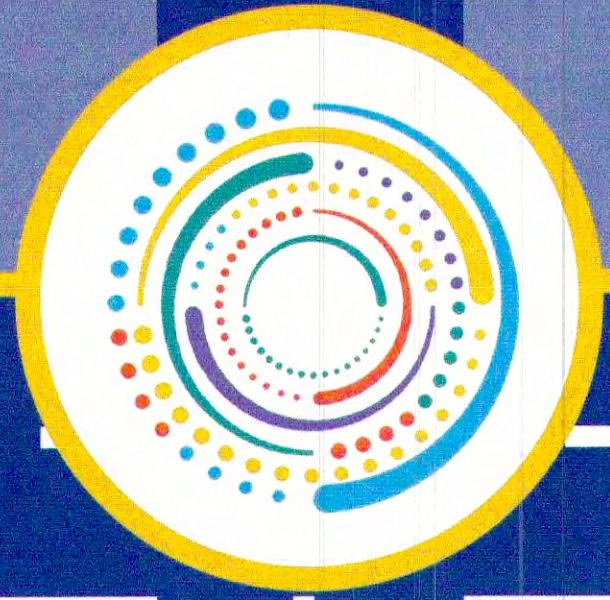


Shade Trees

Time to actually get across the street?
Yes

In addition, stop butchering the existing trees. Town needs to review mowing of current & new trees - mulching up to the trunk this kills trees & should not be done.





KEY DATA: Crashes



What are the conditions in these high-crash areas?



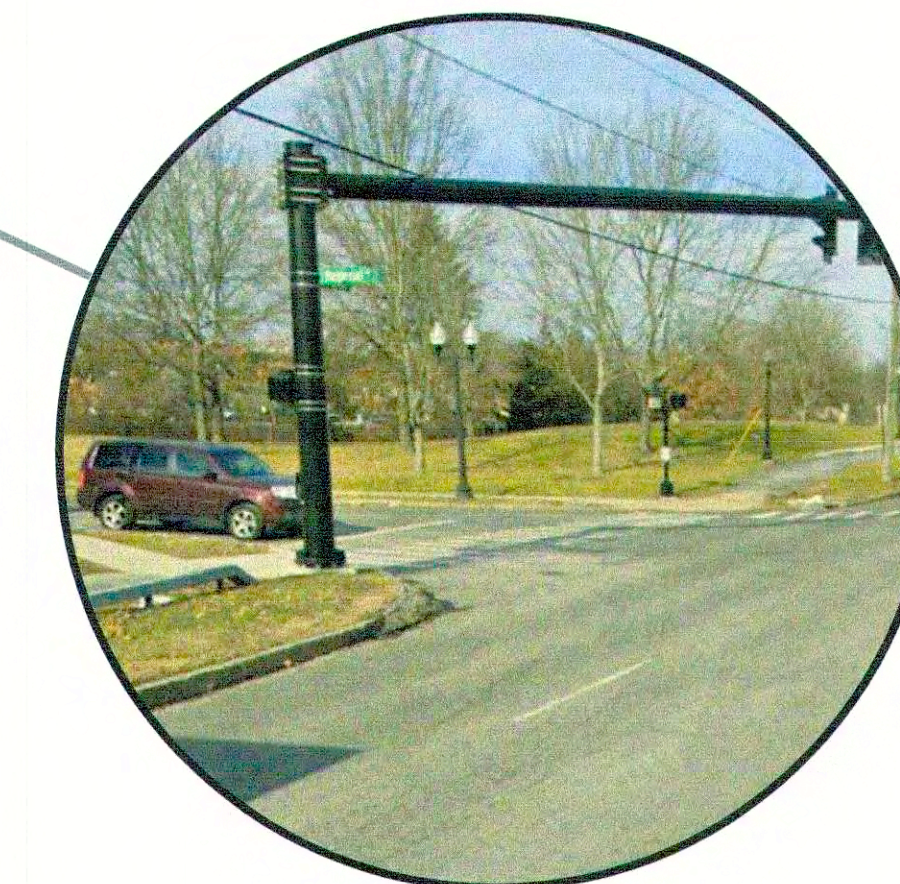
- Wide roadway with multiple lanes
- Fast-moving vehicles
- Congestion contributes to crashes at the intersection

horrible pedestrian experience

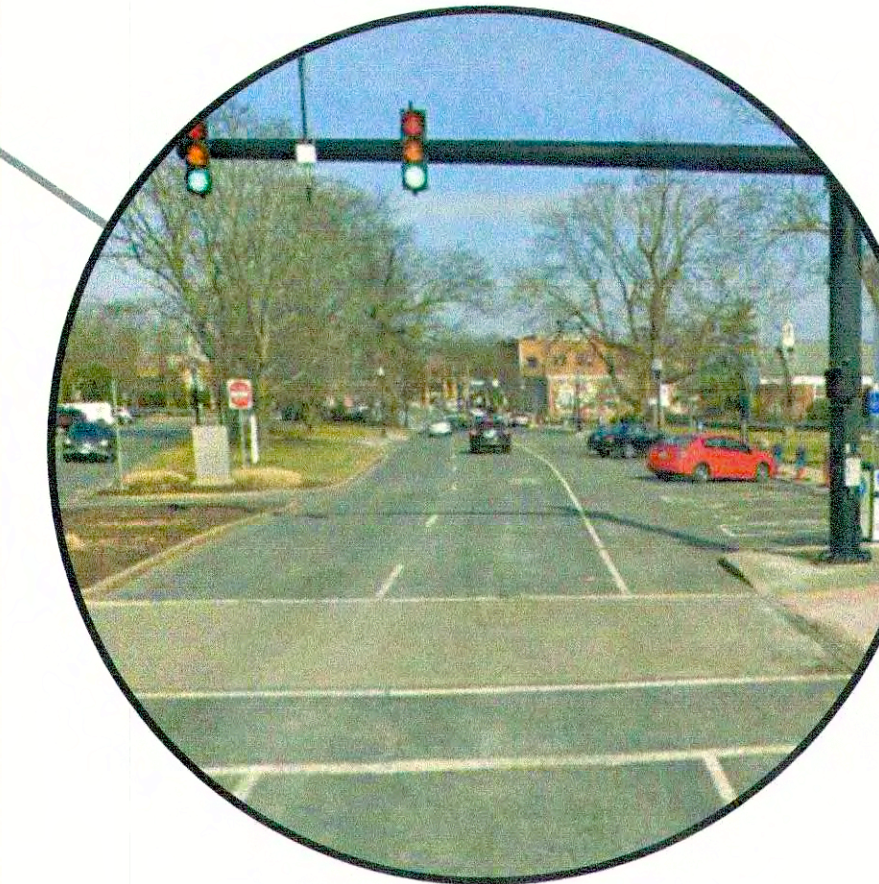


- Wide intersection
- Gateway for visitors
- Congestion and difficult left turn movements contribute to crashes at the intersection

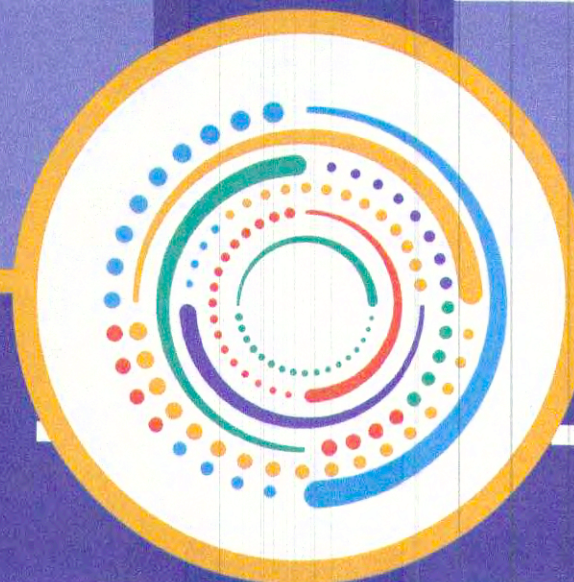
drivers get confused



- Narrow sidewalks
- Access to school and grocery store
- Gateway to Town Center from I-84



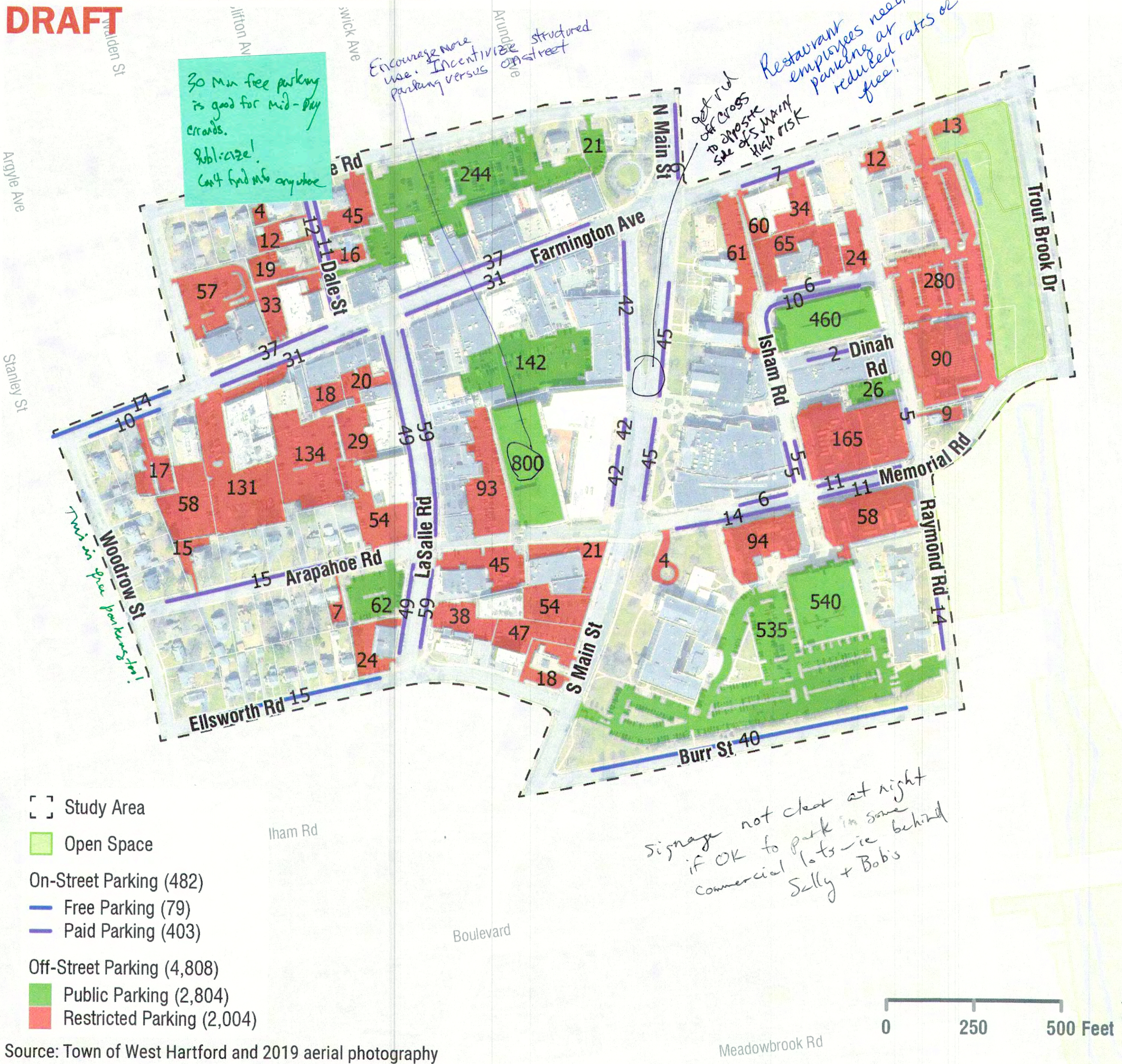
- Multiple lanes in each direction
- Angled parking close to intersection
- Congestion contributes to crashes at the intersection



KEY DATA: Parking and Parking Use

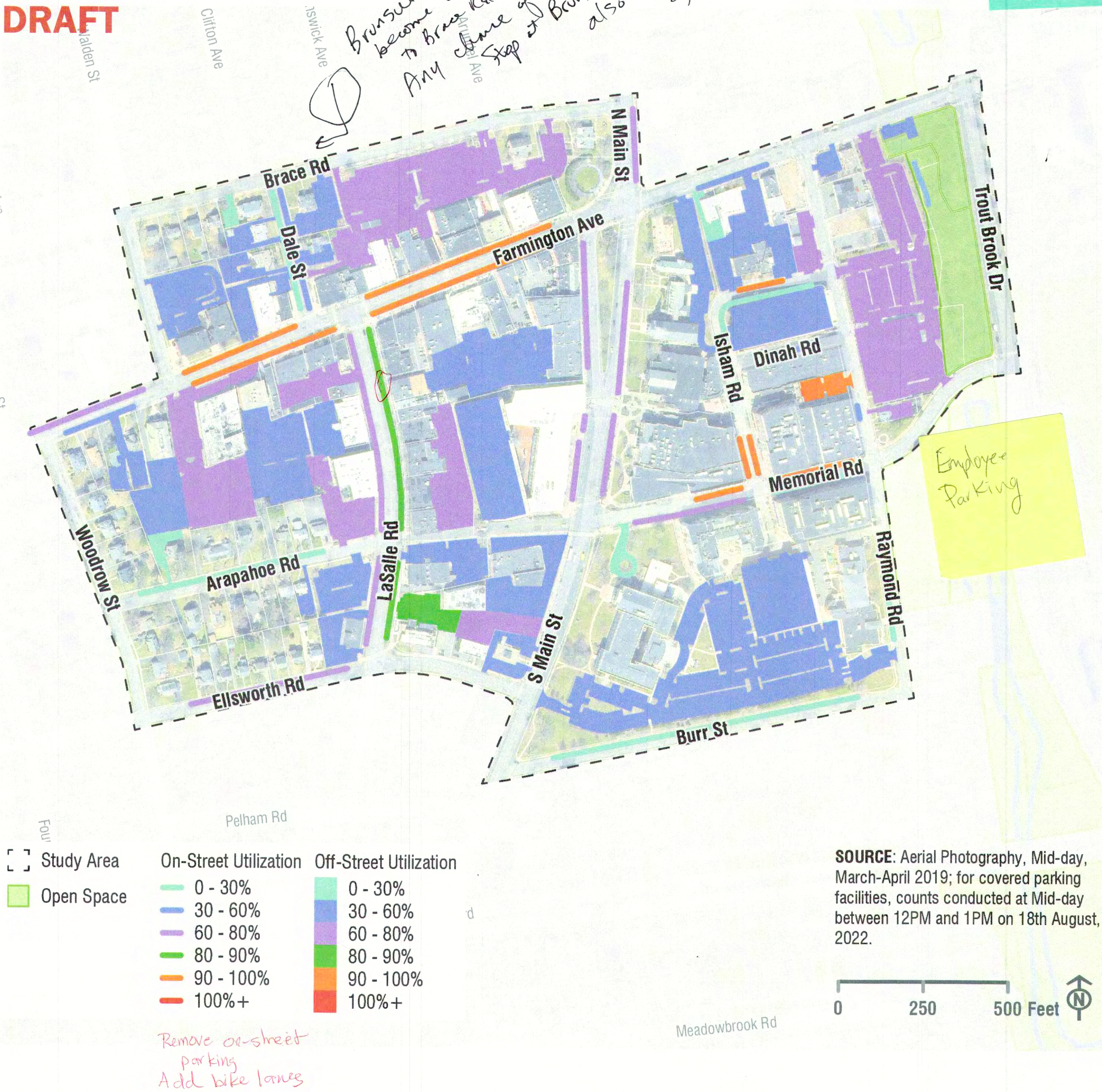
Parking Inventory

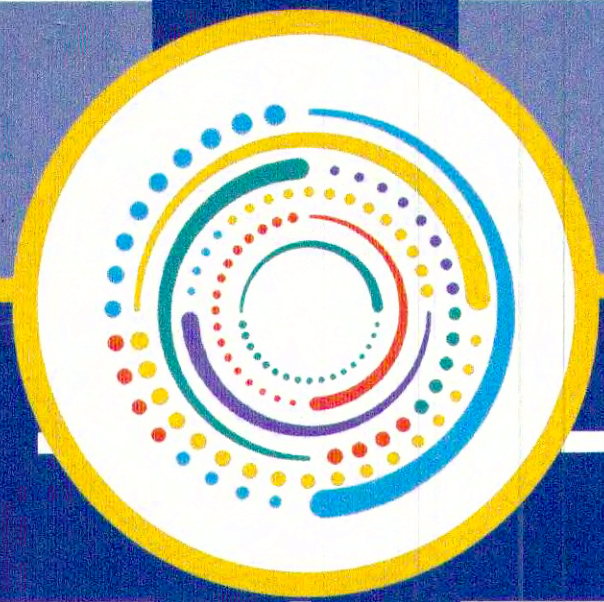
DRAFT



Parking Utilization

DRAFT



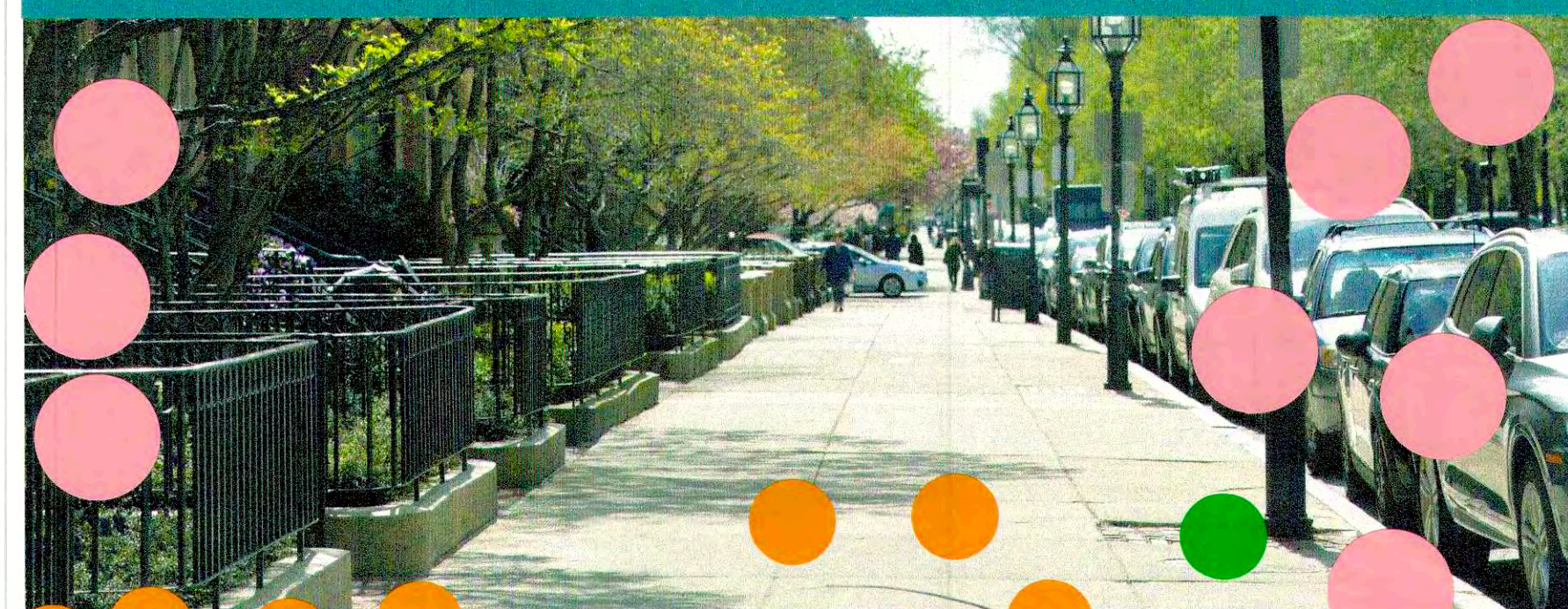


IDEAS: LaSalle Connection Preferences

As the Town of West Hartford considers improvements to the Town Center, they would like your input on the types of facilities you would like to see. Please help us by using the stickers provided to vote for the features you think are most important.

Imagining LaSalle Road in the Future

Sidewalks: Which element is most important to you?



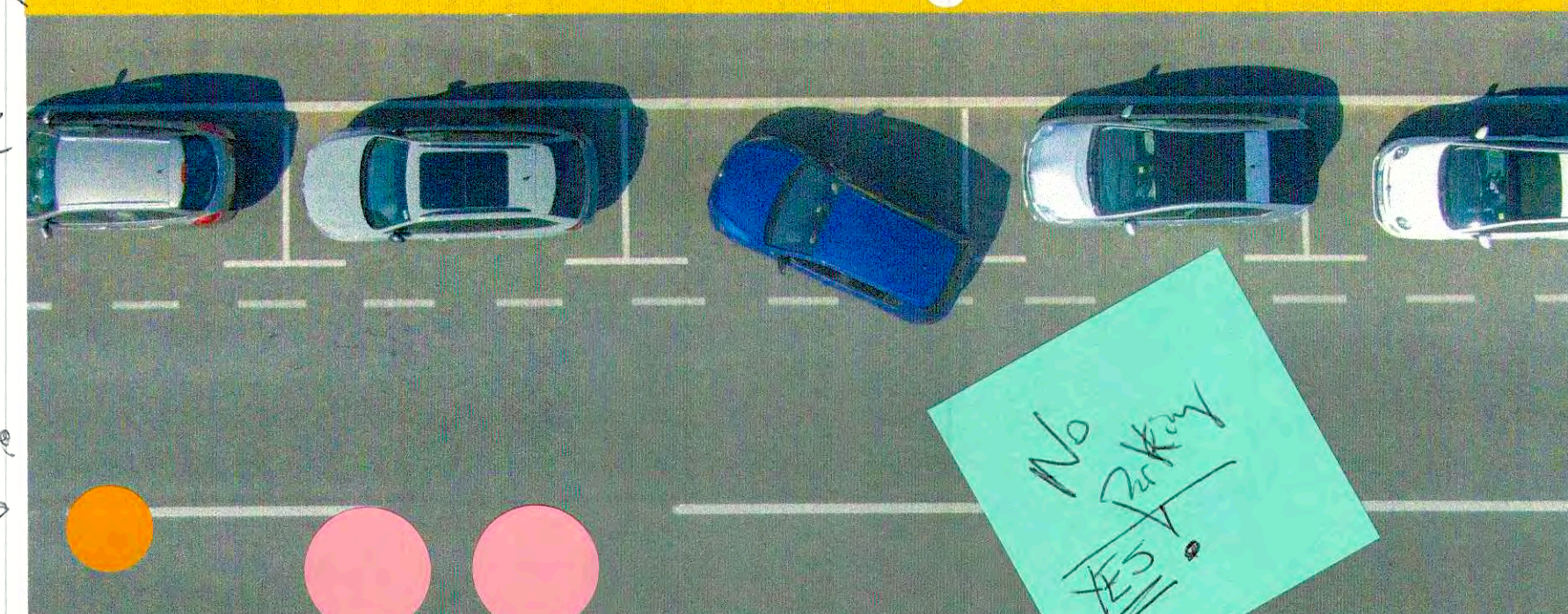
Wider Sidewalks



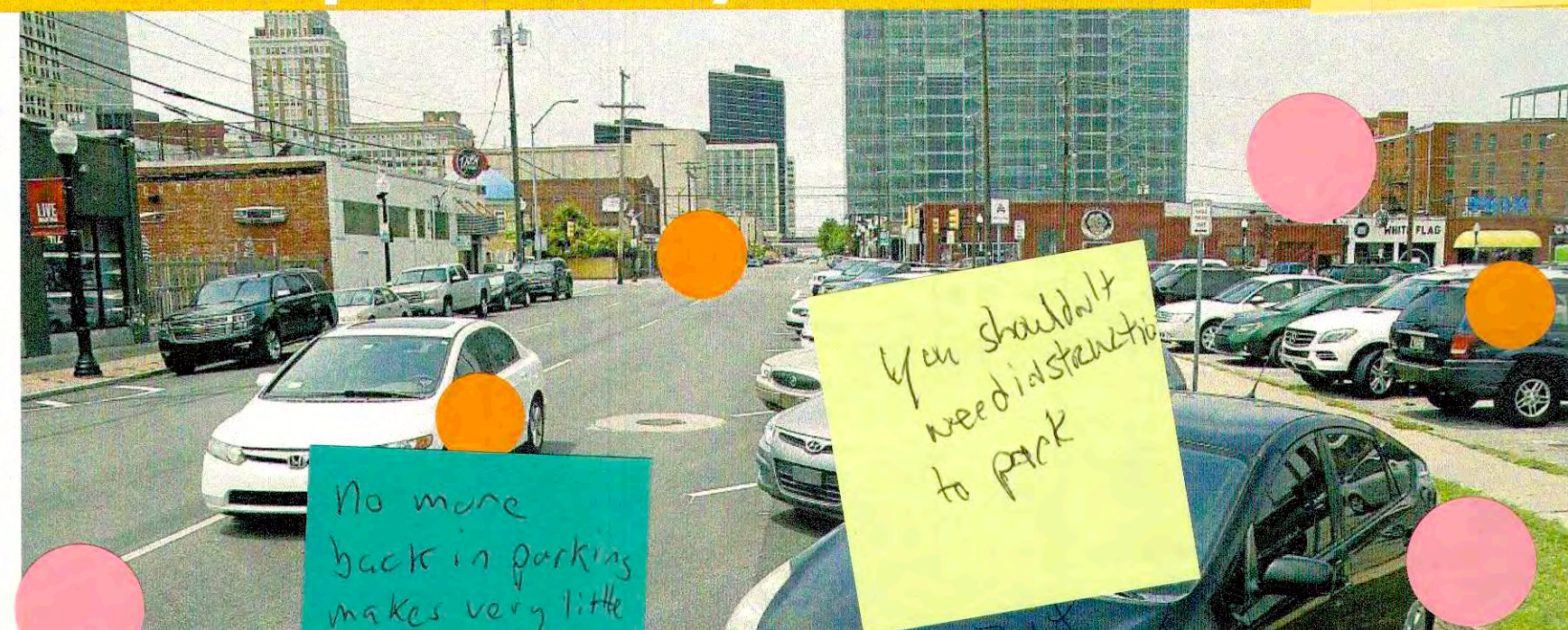
Bigger Outdoor Dining Area

But not if this means closing LaSalle to one-way traffic.

Parking: Which element is most important to you?



Parallel Parking



Angled Parking

No more back in parking makes very little sense and works against intuition, slows traffic down

You shouldn't need a driveway to park

But not backing in *

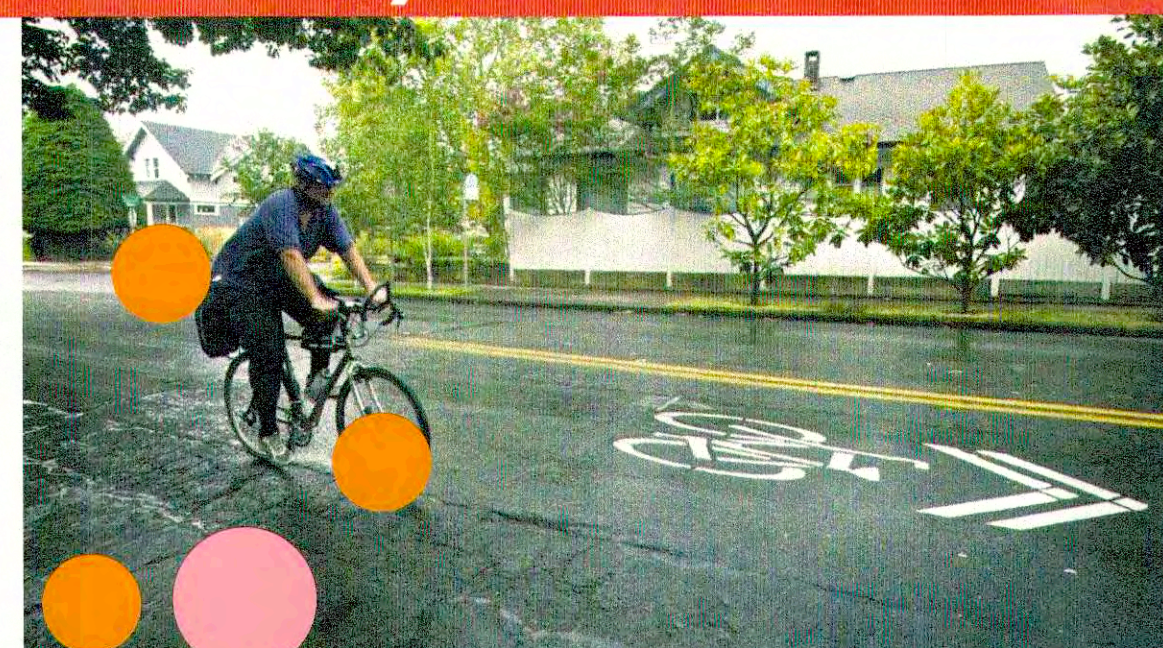
Bicycle Facilities: Which element is most important to you?



Bike Lane



Protected Bike Lane



No Bike Lane

Anything else you'd like to see? Write it here.

Angled parking - head in - less street space involved in pulling in ^{rear} or none most have cameras so ~~back~~ backing out simple get rid of backing parking

Limit on-street parking

No back in parking

Zohar - takes up too much of the sidewalk.

Yes, but add to lot parking incl. acquisition of some private lots

- Strongly prefer LaSalle to be closed to vehicles; would need to consider how that would impact preference for bike lanes. (no cars, should also mean no bikes, unless we got a dedicated bike lane) Yes, bikes can be dangerous for pedestrians also. Not true!

LaSalle needs to be slowed; speed bump or whatever works. How do you keep traffic from jamming up the residential streets if you close a main thoroughway?

Forget sidewalks + streets - make LaSalle one level with people-centered activity

No parking on LaSalle from Main Ave to allow wider sidewalks and outdoor dining, tree lined streets. Parking pass at reduced price or ideally free for residents. No panhandling allowed at every corner.

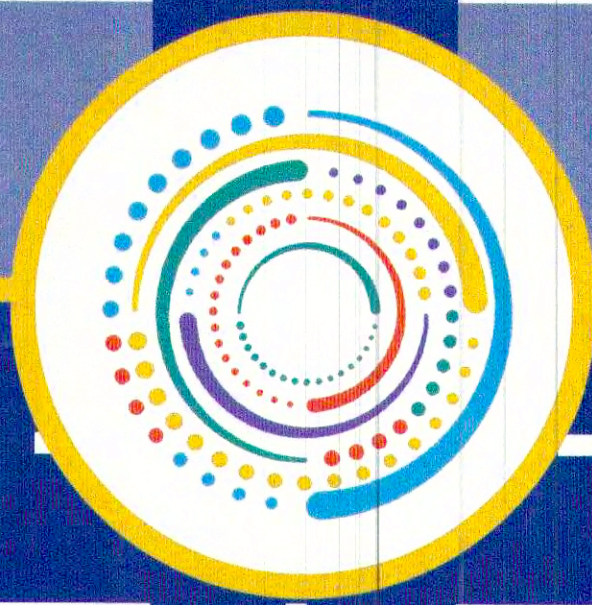
Bigger uniform [] or [] pavers on sidewalks

Protected bike lanes, clear sidewalk space or outdoor seating for restaurants but please don't eliminate outdoor seating for restaurants.

Please create a plan to keep residential neighborhood safe. If LaSalle closes the traffic in the streets next to LaSalle will increase.

Not needed if we have bike lanes on Farmington Ave (park bike area)

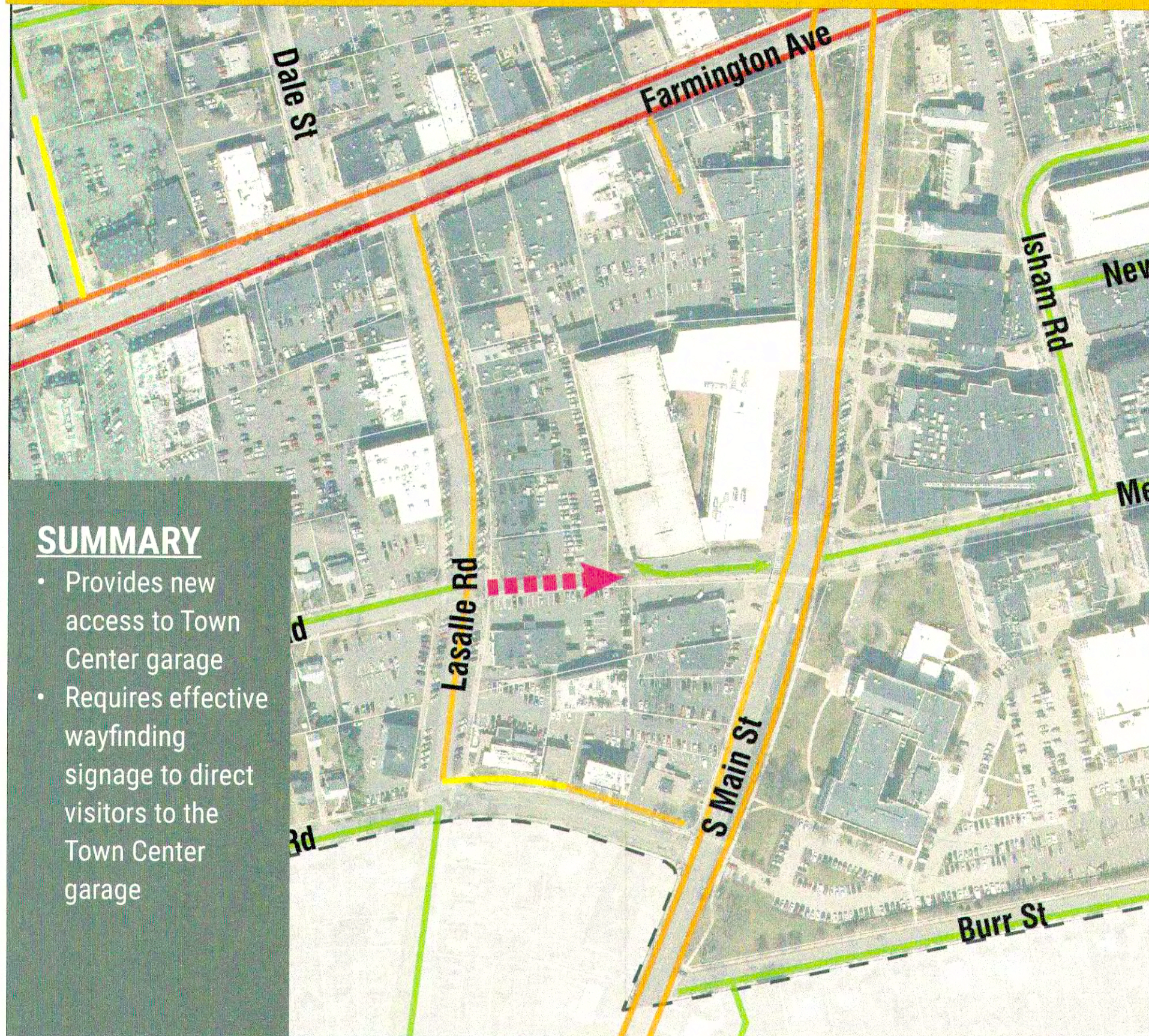
possible to have shuttle or something to LaSalle if it is a pedestrian zone to make more accessible to ppl. w/ mobility issues



IDEAS: Memorial Road Connection

whatever you
do, make
sure this is
maintained as
a good bike rte

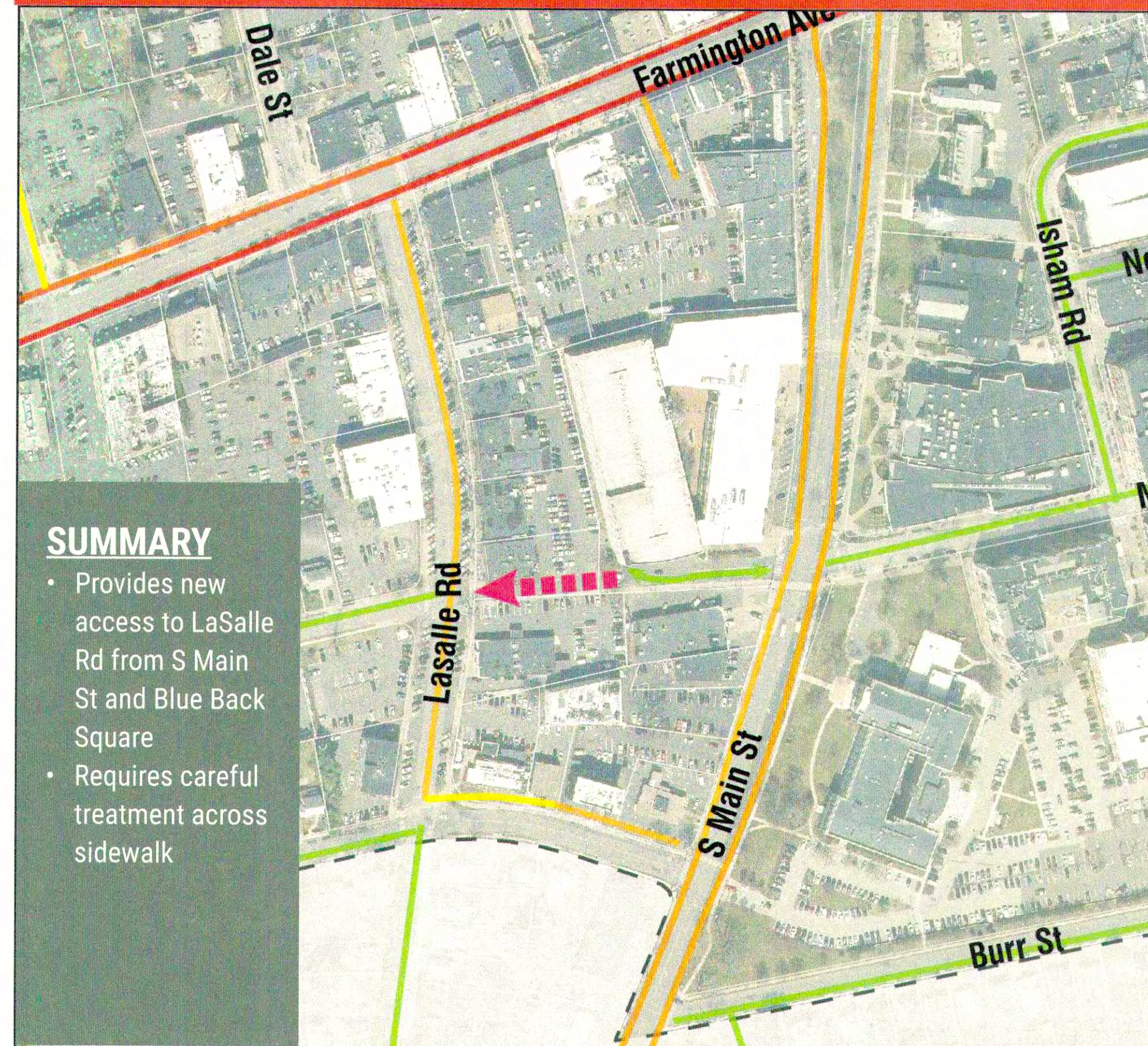
OPTION 1. One-way EB



SUMMARY

- Provides new access to Town Center garage
- Requires effective wayfinding signage to direct visitors to the Town Center garage

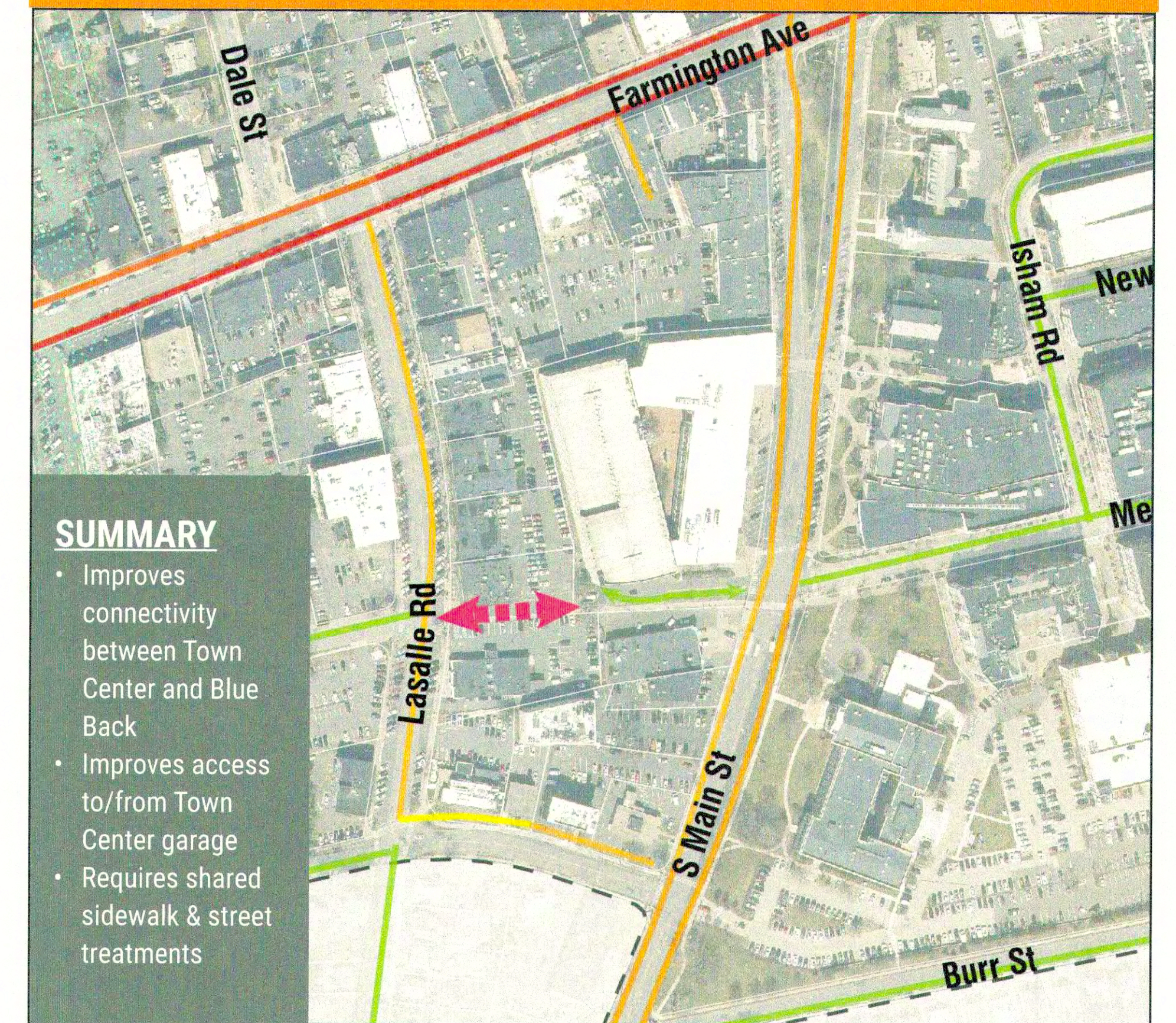
OPTION 2. One-way WB



SUMMARY

- Provides new access to LaSalle Rd from S Main St and Blue Back Square
- Requires careful treatment across sidewalk

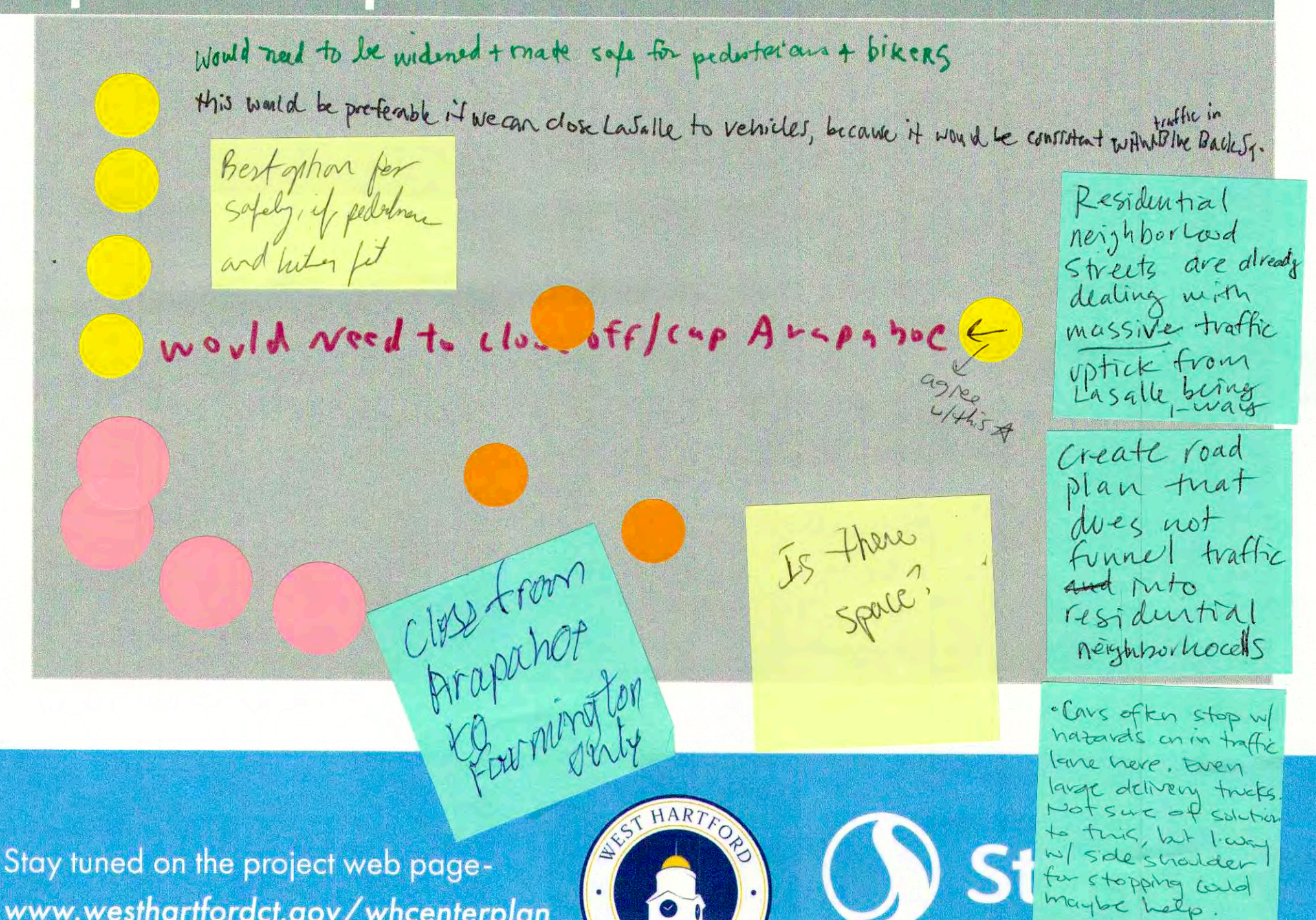
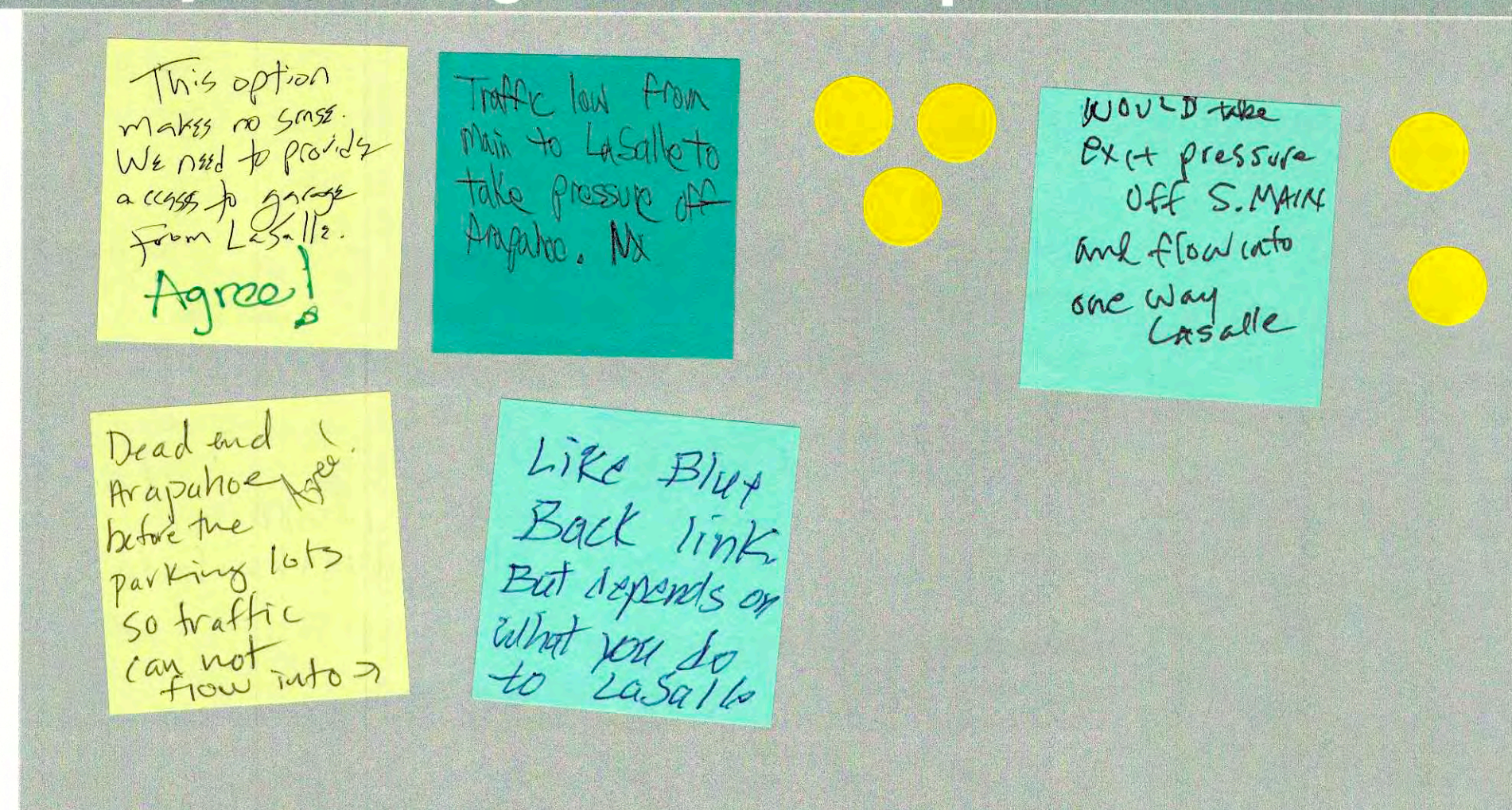
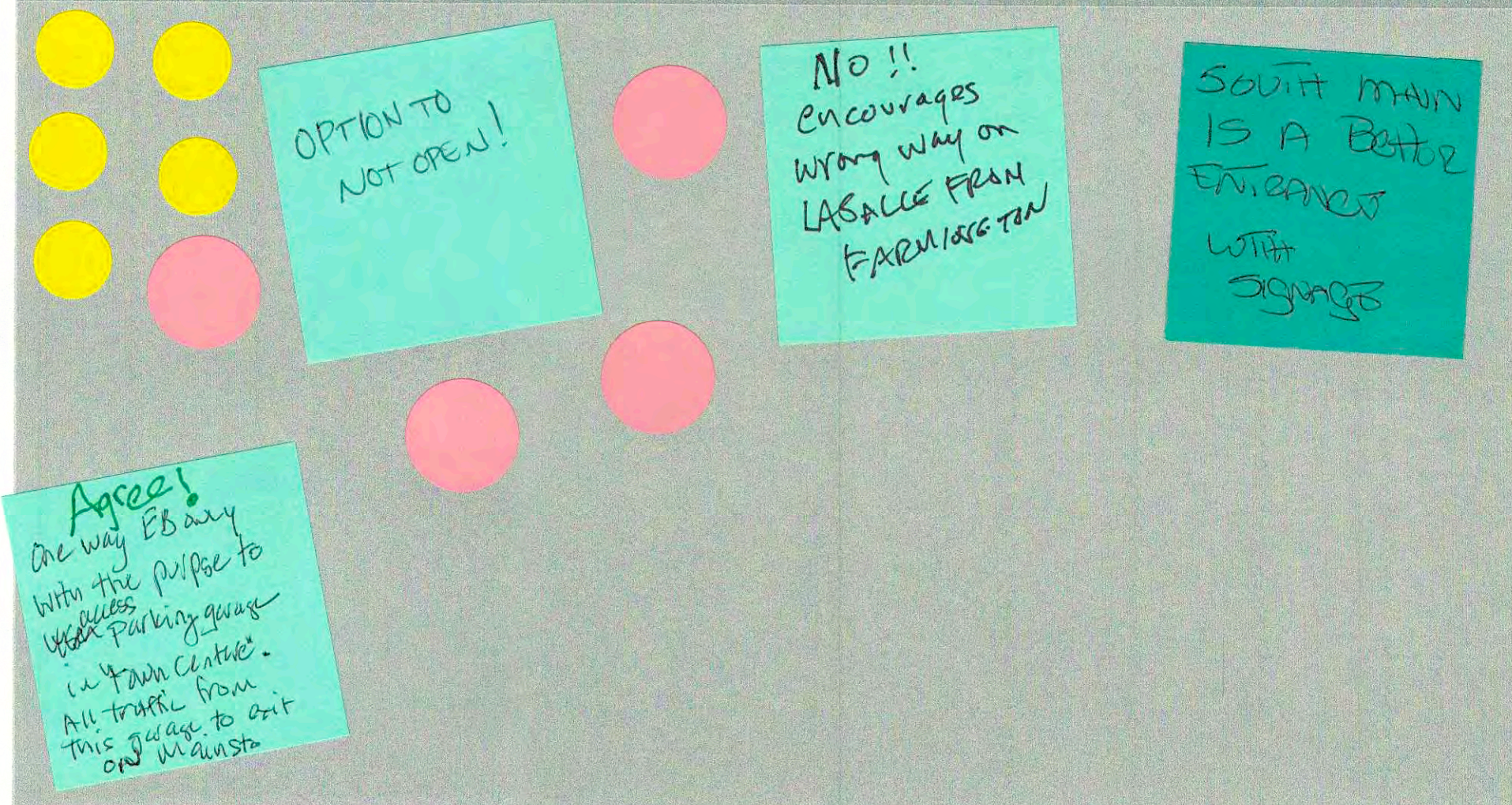
OPTION 3. Two-way street

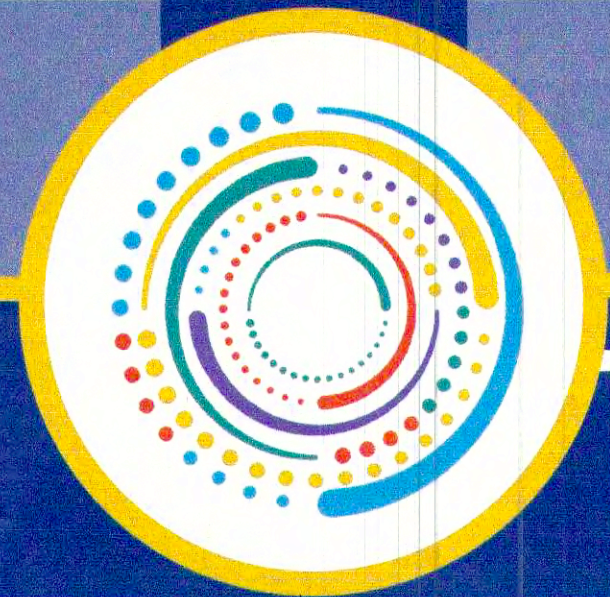


SUMMARY

- Improves connectivity between Town Center and Blue Back
- Improves access to/from Town Center garage
- Requires shared sidewalk & street treatments

What do you think? Write your thoughts here and place a sticker on your preferred option.





PROJECT GOALS

What is most important to you for the future design of West Hartford Town Center?

The following goals were identified as part of the POCD (Plan of Conservation and Development) Adopted Plan and West Hartford Center Planning Initiative. Use a Post-It note to suggest any edits to these goals. If you feel that a goal is not appropriate, make a note of that too!



Facilities + Infrastructure

What it is

Promote practices that will **maintain and modernize Town facilities and infrastructure** in order to **meet the evolving needs** of the community in sustainable ways and recognize the need to provide services harmoniously with West Hartford's place in the greater Hartford Region and State at large.

Our Interpretation

What this could mean for the Infrastructure Plan:

- Install electric vehicle charging stations
- Add "bioswales" and other stormwater treatment elements to the street

What Does This Goal Mean to You?

Anything Missing From this Goal?



Neighborhoods + Housing

What it is

Enhance and maintain West Hartford's existing neighborhoods and **encourage diversity of housing types** and costs to provide access and availability of housing options to current and future residents.

Our Interpretation

What this could mean for the Infrastructure Plan:

- Make it welcoming and easy to use the bus, walk, and bike, which are more affordable options for mobility
- Consider "sharing" parking so that residents can use parking in the evening that supports commercial uses during the day

What Does This Goal Mean to You?

Agree with affordable housing where it makes sense and also doesn't detract from existing neighborhoods

Anything Missing From this Goal?



Economic Development

What it is

Promote growth and **retention of existing businesses and development of new business opportunities** to strengthen the community's tax base in an innovative manner, while preventing and **protecting the residential character** of the surrounding neighborhoods.

Our Interpretation

What this could mean for the Infrastructure Plan:

- Design space for businesses to spill out in the street, such as outdoor dining or vending
- Widen sidewalks and create more places to stop on the street
- Make it easier to walk to and from underutilized parking spaces
- Connect Town Center and Blue Back Square as a unified whole
- Integration of a public restroom

What Does This Goal Mean to You?

Rent prices are killing Blue Book Protect the business

Need places for younger people and teens to go to

Anything Missing From this Goal?



Transportation

What it is

Promote an **integrated and balanced transportation system**, including "complete streets," to improve traffic flow, enhance parking opportunities, promote public transportation and car-pooling; enhance traffic calming efforts, pedestrian mobility and bicycle access; and meet the **needs of the next generation of transportation** technologies and infrastructure.

Our Interpretation

What this could mean for the Infrastructure Plan:

- Use wayfinding and signage to help people get where they are going
- Reconsider how curbside space right "at the front door" is used
- Deploy designs that slow vehicle traffic to address safety and comfort issues

What Does This Goal Mean to You?

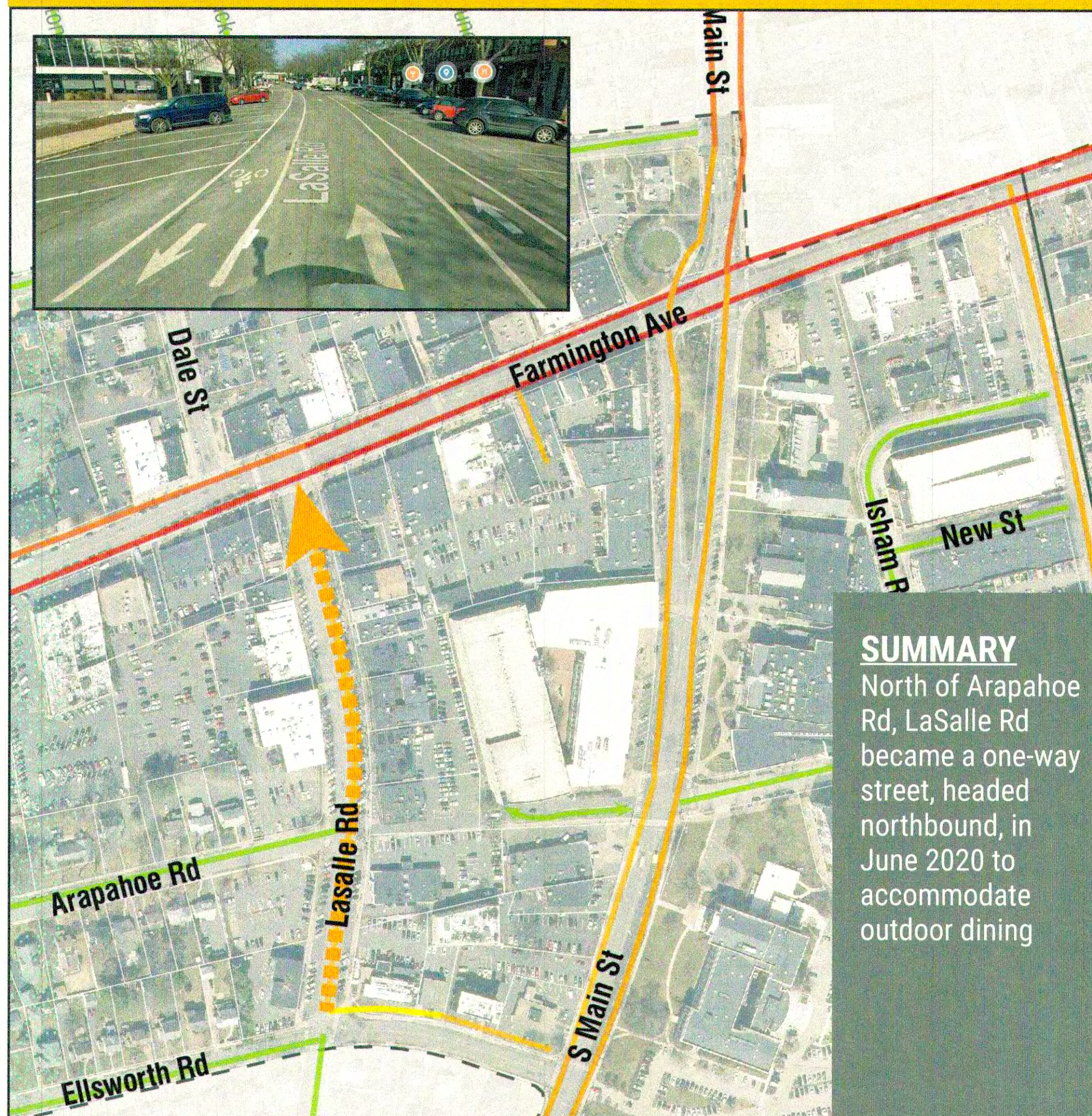
Anything Missing From this Goal?

Trout Brook Trolley!

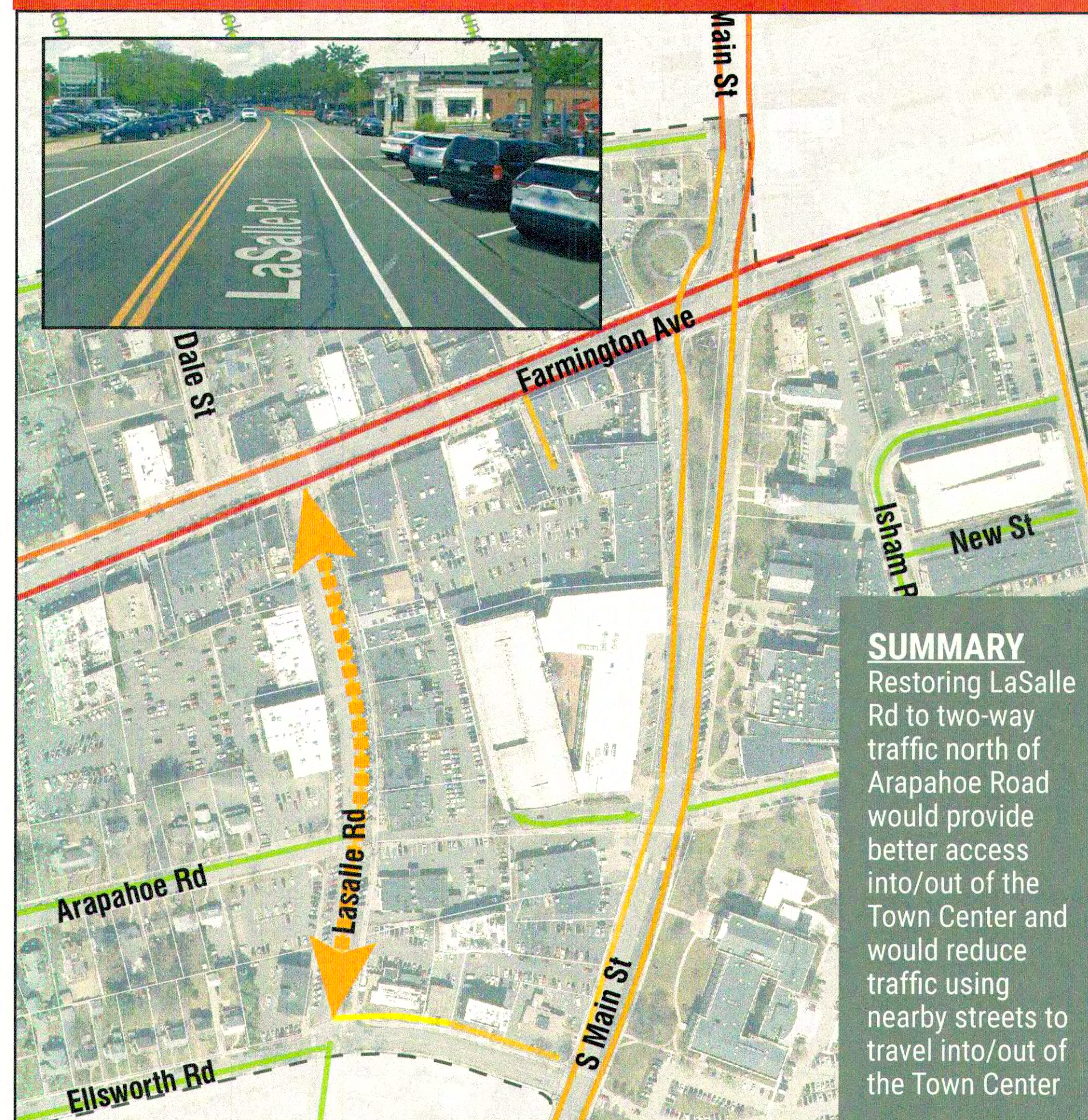


IDEAS: Changes to LaSalle Road Circulation

OPTION 1. One-way NB (existing)



OPTION 2. Two-way



OPTION 3. Closing LaSalle



What do you think? Write your thoughts here and place a sticker to vote on your preference.

This has been disaster for biking, driving + adj. neighborhood

1 way other direction (SB)

Get rid of back-in parking

Why not 1 W SB?

There has been a massive increase in traffic in res. neighborhoods from LaSalle being one-way

Please come up with a plan that does not rely on these streets to move traffic around the center

Good point! Agree!!

No!

restoring 2 way would reduce commercial traffic flowing through residential streets.

Definitely not!

Recent Traffic Changes Creating WAY too much Traffic in residential neighborhoods + streets

LaSalle should go south (if you then would all protect Woodrow from excessive traffic

Two-way traffic slows everyone down

Limiting LaSalle has put vehicle strain on the neighboring residential streets. This is a MAIN ARTER that needs to be open both ways to vehicles

Yes Between Arapahoe and Farmington Only

closing LaSalle would dump even more traffic on surrounding residential streets

Looks great, but doesn't consider neighbors

Make LaSalle pedestrian only w/ seating + street furniture + summer + public art

Perhaps stop at Arapahoe

NEED TO ADDRESS TRAFFIC VOLUME ON WOODROW IF CLOSE LaSalle!!

Please NO! Improve parking. Redesign into

NO!!!

Don't do this. Will be a haven for homeless + panhandlers.

agree close all traffic from Arapahoe to Farmington

ideal if merchants can be brought on-board

A SAD DAY FOR MERCHANTS

The best option by far!

West Hartford Town Center Infrastructure Master Plan: Street Design Workshop

PROJECT GOALS

What is most important to you for the future design of West Hartford Town Center?

The following goals were identified as part of the POCD (Plan of Conservation and Development) Adopted Plan and West Hartford Center Planning Initiative. Use a Post-It note to suggest any edits to these goals. If you feel that a goal is not appropriate, make a note of that too.



Facilities + Infrastructure

What it is

Promote practices that will **maintain and modernize Town facilities and infrastructure** in order to **meet the evolving needs** of the community in sustainable ways and recognize the need to provide services harmoniously with West Hartford's place in the greater Hartford Region and State at large.

Our Interpretation

What this could mean for the Infrastructure Plan:

- Install electric vehicle charging stations — *Many with signage*
- Add "bioswales" and other stormwater treatment elements to the street

What Does This Goal Mean to You

We need + will need more charging stations free or not free

More green infra + public spaces, less heat islands

Making it safe for those that use the area → better sidewalks, better ability for those w/ mobility issues to get around, ability to cross roads safely

Please consider adding a small park, even a modest sized one, would be transformative, especially for those with small kids. A small playground and a few trees and benches would be amazing!! — *Quinn*

bike lanes to encourage sustainable transp. High quality bike facilities

Anything Missing From this Goal?

Use European model — smaller neighborhood with commercial & livable areas

(YES) Keep center cool w/ trees with increased foliage from trees

Town Hall Parking at night FREE



Neighborhoods + Housing

What it is

Enhance and maintain West Hartford's existing neighborhoods and **encourage diversity of housing types** and costs to provide access and availability of housing options to current and future residents.

Our Interpretation

What this could mean for the Infrastructure Plan:

- Make it welcoming and easy to use the bus, walk, and bike
- More affordable options for mobility
- Consider "sharing" parking so that residents can use parking even during the day

Maximize the value of any residential projects allowed in the Town Center

Allowed backyard accessory dwelling units (housing)

We need more affordable housing with walkability + easy access to public transportation

improved bus stops with shelters

Diversity of community — vibrancy

Shared parking — when is the center busiest? It feels like dinner after 5:30

More affordable rentals and less luxury condos like Blueback

No affordable housing in prime location (w/ center)

lower income housing, better traffic flow more friendly for pedestrians

Reduce vehicle traffic and pedestrian walking (e.g., parking lots)

Traffic volume reduction to protect pedestrians in adjacent residential neighborhood

I don't live in the center + don't often come to the center. Too crowded, too expensive, poor public transit

Discourage the use of free parking on residential streets by installing parking meters & granting residents w/ a free parking sticker

Affordability is not low income?

Protect adjacent neighborhoods from the onslaught of traffic & parking from new developments and existing

Improve access and safety at bus stops including secure bike parking

Affordability is not low income?

Protect adjacent neighborhoods from the onslaught of traffic & parking from new developments and existing



Economic Development

What it is

Promote growth and **retention of existing businesses and development of new business opportunities** to strengthen the community's tax base in an innovative manner, while preventing and **protecting the residential character** of the surrounding neighborhoods.

Our Interpretation

What this could mean for the Infrastructure Plan:

- Design space for businesses to spill out in the street, such as outdoor dining or vending
- Widen sidewalks and create more places to stop on the street
- Make it easier to walk to and from underutilized parking spaces
- Connect Town Center and Blue Back Square as a unified whole
- Integration of a public restroom

What Does This Goal Mean to You

Make the center safer for pedestrians + bikers + retailers

Outdoor dining, more space for farmers market & other pop-up type things

encourage 3-4 story buildings

Anything Missing From this Goal?

More public seating / hang-out areas. Pedestrian safety

Economic Dev. Rents are too high

Shuttle bus around center (connects Blue Back & more easily too) — *Shuttle bus*

Climate change



Transportation

What it is

Promote an **integrated and balanced transportation system**, including "complete streets," to improve traffic flow, enhance parking opportunities, promote public transportation and car-pooling; enhance traffic calming efforts, pedestrian mobility and bicycle access; and meet the **needs of the next generation of transportation technologies and infrastructure**.

Our Interpretation

What this could mean for the Infrastructure Plan:

- Use wayfinding and signage to help people get where they are going
- Reconsider how curbside space right "at the front door" is used
- Deploy designs that slow vehicle traffic to address safety and congestion issues

More bike lanes, protected bike lanes, less vehicular traffic, free jitneys downtown

high quality bike facilities

Bike lanes thru Farmington Ave and beyond towards the Post Bank Trail and Mountain Road.

Wt needs to incrementally make driving more inconvenient. Fewer lanes on South Main so no traffic on LaSalle, protected bike lanes, a town parking lot for people w/ machines

Anything Missing From this Goal?

Fully protected bike lanes

reducing traffic speed

PEDESTRIAN WALKWAYS SHOULD BE ACCESSIBLE FOR PEOPLE WITH MOBILITY IMPAIRMENT

Slow traffic, don't over-bike, surface parking

Clean fuel buses in and around town

less cars, more people — human scale

Make room for bike lanes w/ less street parking and more and bigger public lots

Narrow streets to slow down traffic & make it safer for pedestrians & cyclists. Reducing lanes (yes)

get rid of back-in parking on LaSalle

But need to work with them

More benches and bus shelters there are not enough safe places to wait for the bus

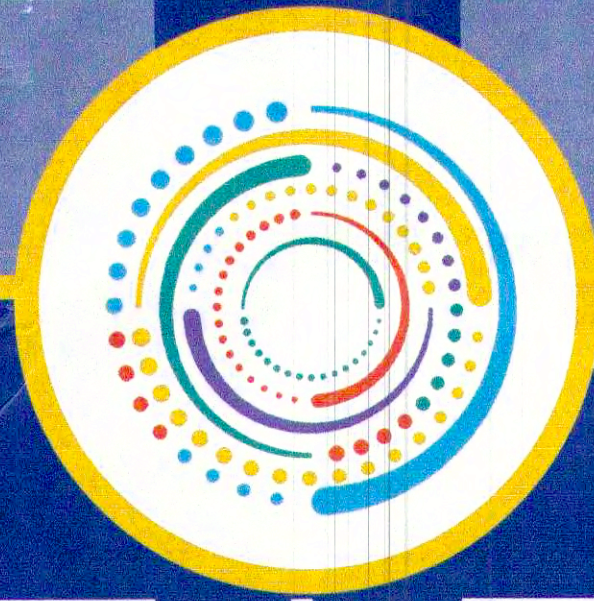
Activate the red light cameras

Remove cars

Often issues of ppl double parking or stopped with hazards on in road lanes. Impedes traffic & makes it unsafe for drivers & bikers trying to get through

Not sure what can be done about this — unless we ban cars from center altogether but it's an issue

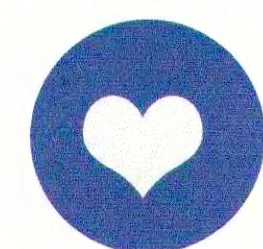
Not sure what can be done about this — unless we ban cars from center altogether but it's an issue



PROJECT GOALS

What is most important to you for the future design of West Hartford Town Center?

The following goals were identified as part of the POCD (Plan of Conservation and Development) Adopted Plan and West Hartford Center Planning Initiative. Use a Post-It note to suggest any edits to these goals. If you feel that a goal is not appropriate, make a note of that too!



Cultural + Historic Resources

What it is

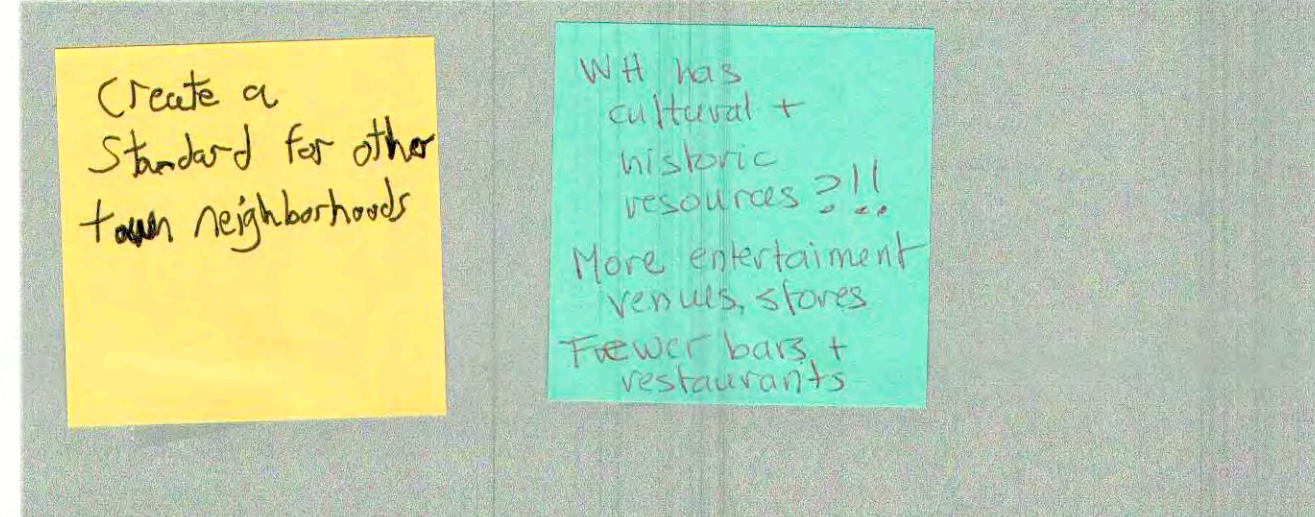
Preserve, protect, enhance and promote the cultural and historic resources of West Hartford.

Our Interpretation

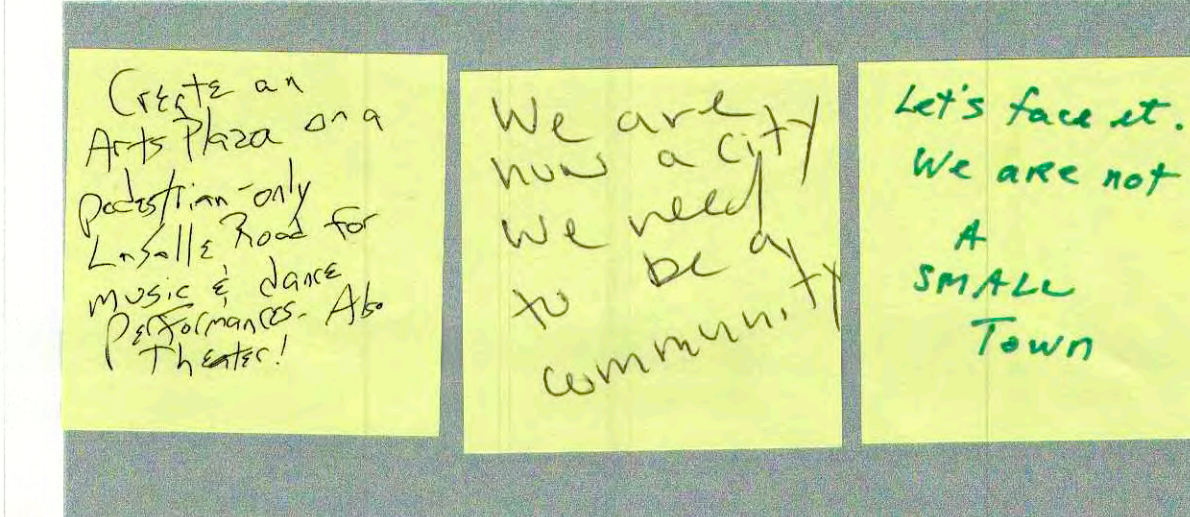
What this could mean for the Infrastructure Plan:

- Include historic elements in the streetscape design
- Identify specific designs that have a West Hartford "look and feel"

What Does This Goal Mean to You?



Anything Missing From this Goal?



Land Use

What it is

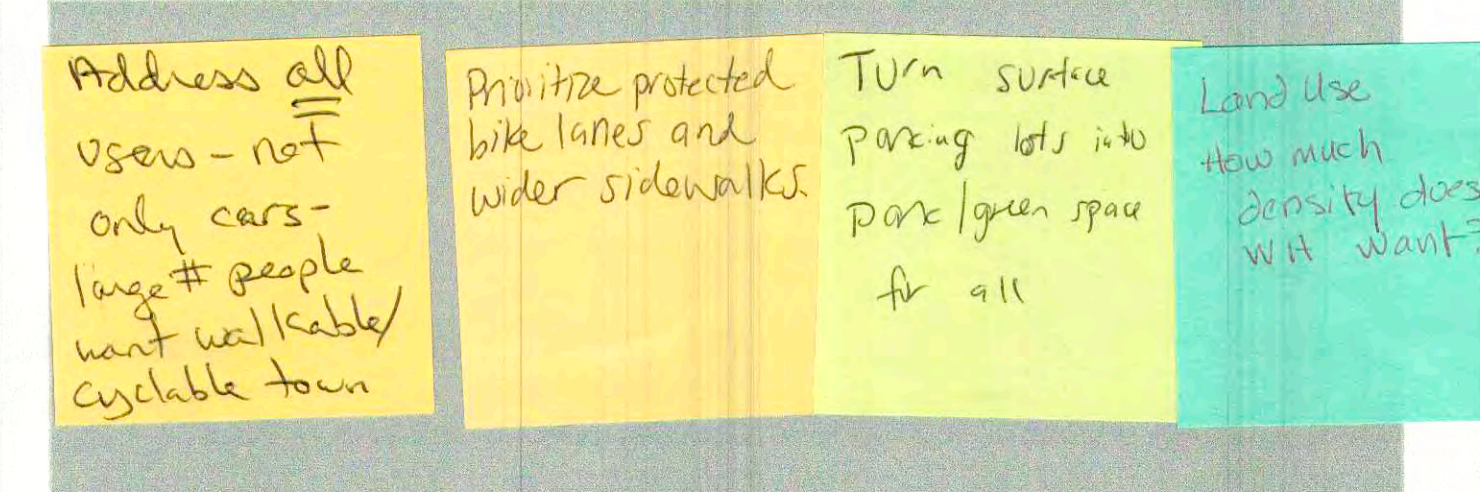
Sustain and preserve the Town of West Hartford as a balanced community, **maintaining and promoting neighborhood quality and open spaces** in conjunction with the principles of Smart Growth.

Our Interpretation

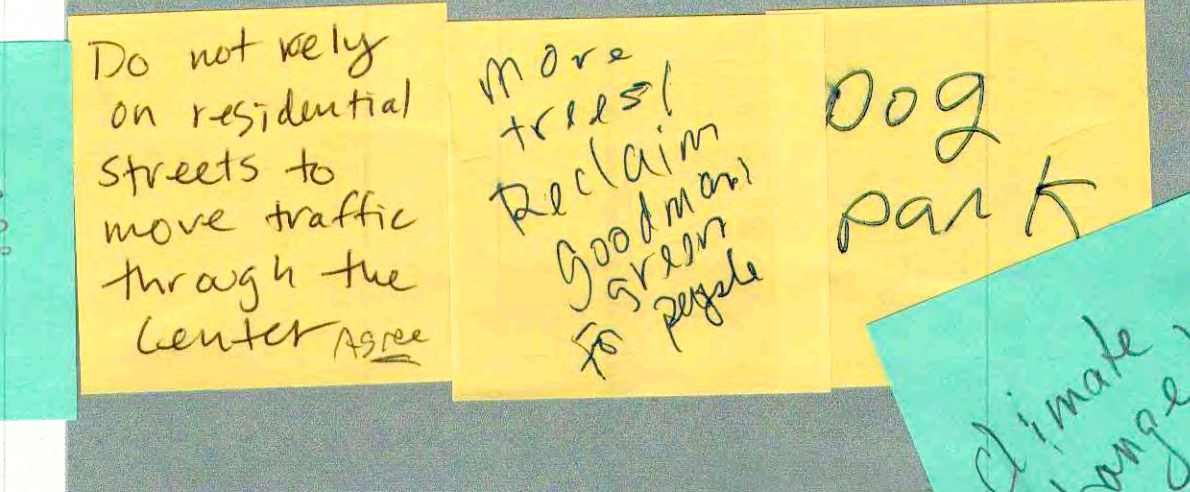
What this could mean for the Infrastructure Plan:

- Create more spaces for neighbors to meet and connect
- Create more space on the street for people walking and biking to mitigate traffic impacts from development

What Does This Goal Mean to You?



Anything Missing From this Goal?



Open Space + Environment

What it is

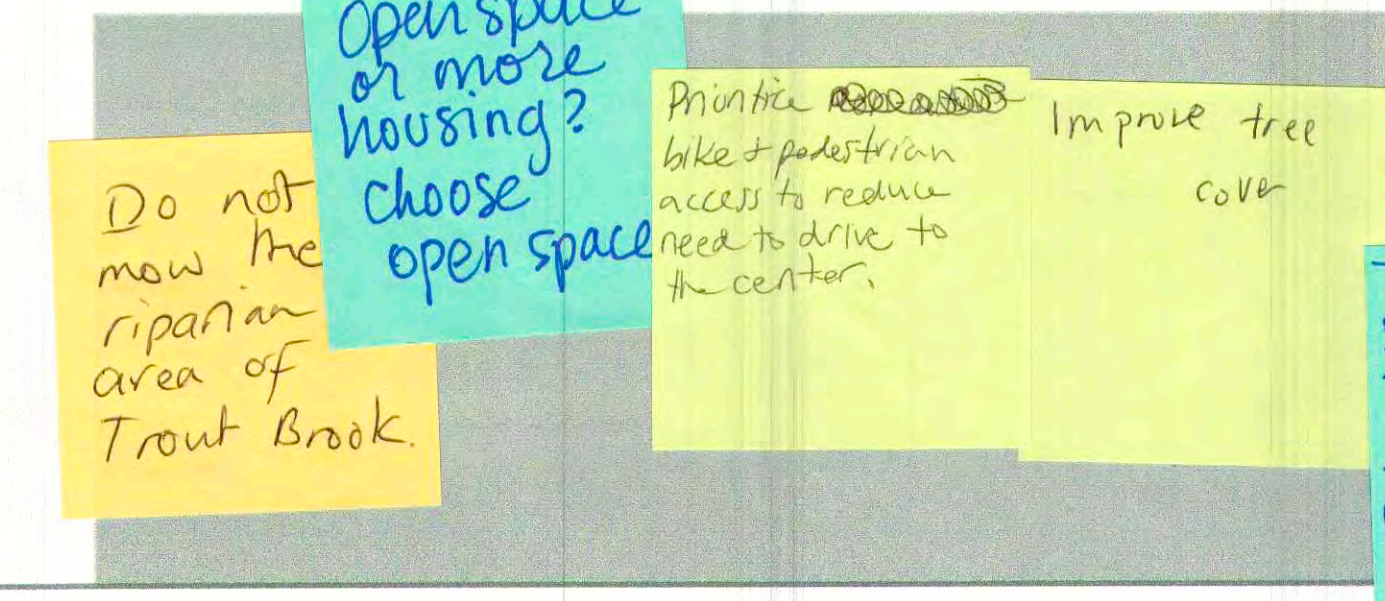
Preserve, protect, enhance and promote our open space and our fragile natural systems in concert with **managing responsible growth and development**.

Our Interpretation

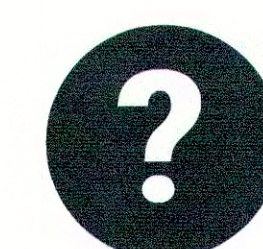
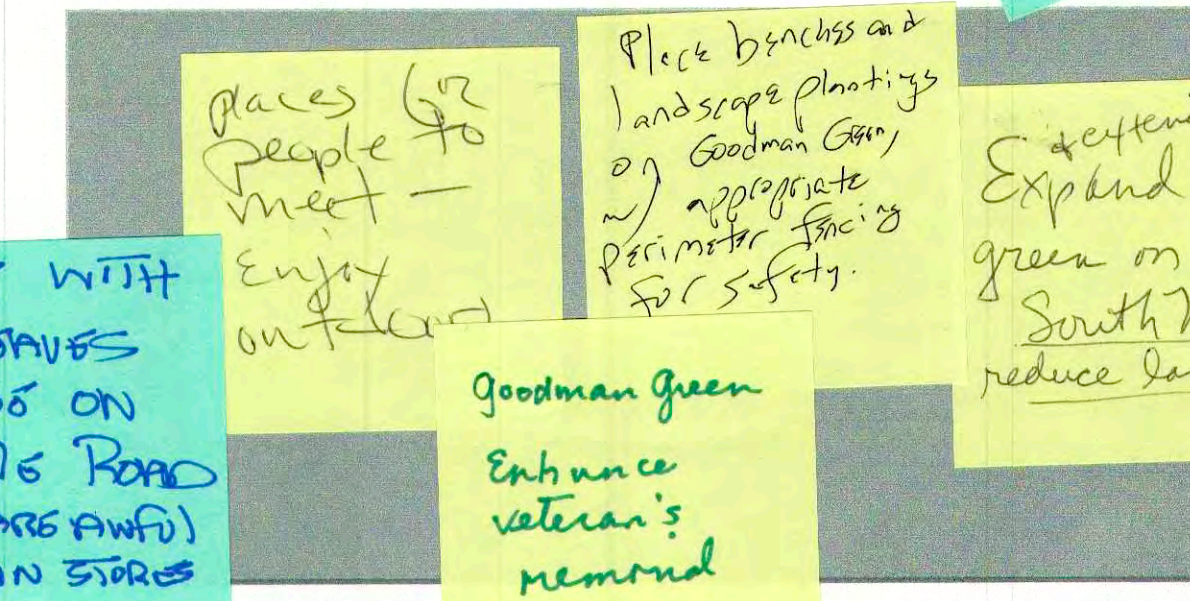
What this could mean for the Infrastructure Plan:

- Create better connections to green space in the Town Center
- Create more green space in the Town Center

What Does This Goal Mean to You?



Anything Missing From this Goal?



Is There Any Goal You Feel is Missing from this List?

