

LEA Name : Souderton Area SD
Address : 760 Lower Road
Souderton , PA 18964

County : Montgomery
AUN Number : 123467103
LEA Type : SD

Annual Financial Report Accuracy Certification Statement

For Fiscal Year Ending

6/30/2022

Pennsylvania Department of Education

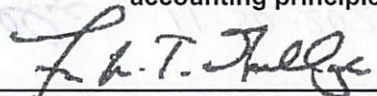
&

Office of Comptroller Operations

PDE-2056: Intermediate Unit

PDE-2057: School District, AVTS/CTC, Charter School,
and Special Program Jointure

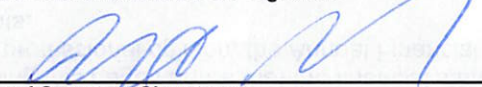
CERTIFICATION: By signing this page I agree that the electronic data submitted is a complete and accurate statement of the financial operations and status of the local education agency for the fiscal year. It has been prepared in accordance with generally accepted accounting principles and established Commonwealth of PA reporting guidelines.



Chief School Administrator Signature

11-30-2022

Date



Board Secretary Signature

11/30/2022

Date

Michael Taylor

Contact Person

(215)723-6061 Ext :

Contact Person Telephone Number

mtaylor@soudertonsd.org

Contact Person E-mail Address

(215)723-8897

Contact Person Fax Number

Audit Certification
Annual Financial Report:
For Fiscal Year Ending **6/30/2022**
(Pursuant to PA School Code Section 218(b))

LEA Name : Souderton Area SD
AUN Number : 123467103
County : Montgomery

Audit Certification Due: 12/31/2022

This certification is applicable to the Annual Financial Report data submitted through the Consolidated Financial Reporting System (CFRS).

CERTIFICATION: By signing this page I agree that the financial statements of the school have been properly audited as noted above pursuant to Article XXIV, and in the auditor's professional opinion, the Annual Financial Report (PDE-2057) submitted through CFRS is materially consistent with the audited financial statements.

Chief School Administrator

Board Secretary

Signature

Date

Signature

Date

Michael Taylor

Contact Person

mtaylor@soudertonsd.org

Contact Person E-mail Address

(215)723-6061 Ext :

Contact Person Telephone Number

(215)723-8897

Contact Person Fax Number

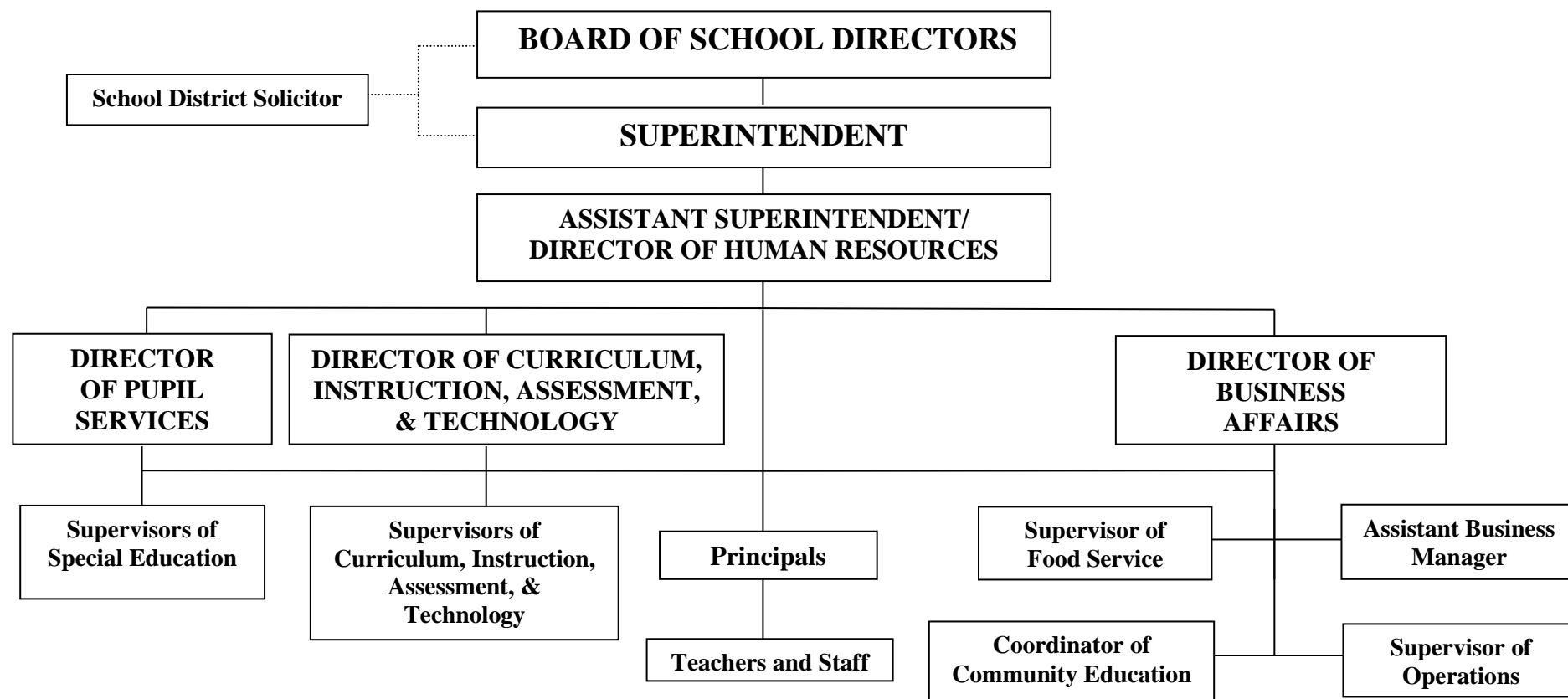
SECTION: LOCAL BOARD PROCEDURES

TITLE: ORGANIZATIONAL CHART

ADOPTED: June 27, 2971

REVISED: August 26, 2021

SOUDERTON AREA SCHOOL DISTRICT



In the absence of the Superintendent, the Assistant Superintendent assumes the role of the Superintendent.



Book	Policy Manual
Section	600 Finances
Title	GASB Statement 34
Code	622
Status	Active
Adopted	March 26, 2002

Purpose

The Board recognizes the need to implement the required accounting and financial reporting standards stipulated by the Pennsylvania Department of Education (PDE).[\[1\]](#)

The primary objectives of implementing GASB Statement Number 34 are to assure compliance with state requirements and to properly account for both the financial and economic resources of the school entity.

Authority

Participation of the school entity in any such activity shall be in accordance with Board policy.

Delegation of Responsibility

The responsibility to coordinate the compilation and preparation of all information necessary to implement this policy is delegated to the Director of Business Affairs.

The Director of Business Affairs shall be responsible for implementation of the necessary administrative procedures to establish and maintain a fixed asset inventory, including depreciation schedules. Depreciation shall be computed on a straight-line basis over the useful lives of the assets using an averaging convention. Normal maintenance and repairs shall be charged to expense as incurred, major renewals and betterments that materially extend the life or increase the value of the asset shall be capitalized. A schedule of accumulated depreciation shall be consistent from year to year. The basis for depreciation, including groups of assets and useful lives shall be done in writing and submitted for review to the independent local auditors.

The Director of Business Affairs shall prepare the required Management's Discussion and Analysis (MD&A). The MD&A shall be in the form required by GASB Statement Number 34 and shall be submitted to the Superintendent for review prior to publication.

Prior to submission of the MD&A for the Superintendent's review, the school entity's independent auditors shall review the MD&A in accordance with SAS No. 52, "Required Supplementary Information".

Guidelines

In order to associate debt with acquired assets and to avoid net asset deficits, any asset that has been acquired with debt proceeds shall be capitalized regardless of the cost of the asset. The asset life of these assets shall be considered relative to the time of the respective debt amortizations.

For all other assets not acquired by debt proceeds, the dollar value of any single item for inclusion in the fixed assets accounts shall not be less than \$4,000. The capitalization threshold shall be set at a level that will capture at least 80% of all fixed assets.

The following assets do not normally individually meet capitalization threshold criteria: library books, classroom texts, computer equipment, classroom furniture. These asset category costs shall be capitalized and depreciated as groups when that group's acquisition cost exceeds \$10,000 in any given fiscal year.

For group asset depreciation purposes, the estimated useful life of the group may be based on the weighted average or simple average of the useful life of individual items or on an assessment of the life of the group as a whole. Periodically, the school entity shall review the estimated life of groups of assets and adjust the remaining depreciation life of the group.

Assets that fall below the capitalization threshold for GASB Statement Number 34 reporting purposes may still be significant for insurance, warranty service, and obsolescence or replacement policy tracking purposes. The school entity may record and maintain these non-GASB Statement Number 34 asset inventories in subsidiary ledgers.

Legal

1. 24 P.S. 613

<u>Val Number</u>	<u>Description</u>	<u>Justification</u>
42420	<p>Expenditure Detail: Total current year 2700-513 expenditure varies from prior year by 10%. Correct the data or enter a justification.</p> <p>2700-513, AFR Exp Detail: \$7,856,159.86 2700-513, PY AFR Amount: \$6,968,731.40</p>	<p>The variance includes double diesel increase and more special education students needing busing.</p>
50160	<p>SOIN: All Governmental Fund General Obligation Bonds must include an amount for Interest Paid during Fiscal Year. Correct data or enter a justification.</p>	<p>Bond opened at the end of June 2022 so no payment was needed.</p>

LEA : 123467103 Souderton Area SD

Printed 11/30/2022 3:18:31 PM

Amounts Expressed in Whole Dollars		<u>General Fund</u> <u>(10)</u>	<u>Student Sponsored</u> <u>Activity Fund</u> <u>(21)</u>	<u>Public Purpose Trust</u> <u>(27)</u>	<u>Other Compt Approved</u> <u>(28)</u>	<u>Athletic / Activity</u> <u>(29)</u>
Assets And Deferred Outflows Of Resources						
Assets						
0100	Cash and Cash Equivalents	17,558,454				
0110	Investments					
0120	Taxes Receivable	1,563,891				
0130	Due From Other Funds	126				
0141	Due From Other Governments	4,748,993				
0142	State Revenue Receivable					
0143	Federal Revenue Receivable					
0145	Other Intergovernmental Revenue Receivable					
0146	Due from Primary Government					
0147	Due from Component Unit					
0150	Other Receivables	126,118				
0170	Inventories					
0180	Prepaid Expenses (Expenditures)	140,559				
0190	Other Current Assets					
Total Assets		\$24,138,141				
0910	Deferred Outflows of Resources					
Total Assets And Deferred Outflows Of Resources		\$24,138,141				

LEA : 123467103 Souderton Area SD

Printed 11/30/2022 3:18:31 PM

Amounts Expressed in Whole Dollars		<u>Capital Reserve (690.</u> <u>1850)</u> <u>(31)</u>	<u>Capital Reserve (1431)</u> <u>(32)</u>	<u>Other Capital Projects</u> <u>Fund</u> <u>(39)</u>	<u>Debt Service</u> <u>(40)</u>	<u>Permanent</u> <u>(90)</u>
Assets And Deferred Outflows Of Resources						
Assets						
0100	Cash and Cash Equivalents			42,937,080		
0110	Investments					
0120	Taxes Receivable					
0130	Due From Other Funds			4,400		
0141	Due From Other Governments					
0142	State Revenue Receivable					
0143	Federal Revenue Receivable					
0145	Other Intergovernmental Revenue Receivable					
0146	Due from Primary Government					
0147	Due from Component Unit					
0150	Other Receivables					
0170	Inventories					
0180	Prepaid Expenses (Expenditures)					
0190	Other Current Assets					
Total Assets				\$42,941,480		
0910	Deferred Outflows of Resources					
Total Assets And Deferred Outflows Of Resources				\$42,941,480		

LEA : 123467103 Souderton Area SD

Printed 11/30/2022 3:18:31 PM

Amounts Expressed in Whole Dollars		<u>Total Governmental Funds</u>
Assets And Deferred Outflows Of Resources		
Assets		
0100 Cash and Cash Equivalents	60,495,534	
0110 Investments		
0120 Taxes Receivable	1,563,891	
0130 Due From Other Funds	4,526	
0141 Due From Other Governments	4,748,993	
0142 State Revenue Receivable		
0143 Federal Revenue Receivable		
0145 Other Intergovernmental Revenue Receivable		
0146 Due from Primary Government		
0147 Due from Component Unit		
0150 Other Receivables	126,118	
0170 Inventories		
0180 Prepaid Expenses (Expenditures)	140,559	
0190 Other Current Assets		
Total Assets	\$67,079,621	
0910 Deferred Outflows of Resources		
Total Assets And Deferred Outflows Of Resources	\$67,079,621	

LEA : 123467103 Souderton Area SD

Printed 11/30/2022 3:18:31 PM

Amounts Expressed in Whole Dollars	<u>General Fund</u> <u>(10)</u>	<u>Student Sponsored</u> <u>Activity Fund</u> <u>(21)</u>	<u>Public Purpose Trust</u> <u>(27)</u>	<u>Other Compt Approved</u> <u>(28)</u>	<u>Athletic / Activity</u> <u>(29)</u>
Liabilities And Deferred Inflows Of Resources And Fund Balances					
Liabilities					
0400 Due to Other Funds	598,925				
0411 Due to Other Governments	633,878				
0412 Due to Primary Government					
0413 Due to Component Unit					
0420 Accounts Payable	944,851				
0430 Contracts Payable					
0440 Current Portion of Long-Term Debt	196,281				
0450 Short-Term Payables					
0461 Accrued Salaries and Benefits	453,940				
0462 Payroll Deductions and Withholding	7,274,481				
0480 Unearned Revenues					
0490 Other Current Liabilities	445,827				
Total Liabilities	\$10,548,183				
0950 Deferred Inflows of Resources	1,036,259				
Fund Balances					
0810 Nonspendable Fund Balance	140,559				
0820 Restricted Fund Balance	182,279				
0830 Committed Fund Balance	1,000,000				
0840 Assigned Fund Balance	2,131,053				
0850 Unassigned Fund Balance	9,099,808				
Total Fund Balances	\$12,553,699				
Total Liabilities, Deferred Inflows Of Resources And Fund Balances	\$24,138,141				

LEA : 123467103 Souderton Area SD

Printed 11/30/2022 3:18:31 PM

Amounts Expressed in Whole Dollars		<u>Capital Reserve (690.</u> <u>1850)</u> <u>(31)</u>	<u>Capital Reserve (1431)</u> <u>(32)</u>	<u>Other Capital Projects</u> <u>Fund</u> <u>(39)</u>	<u>Debt Service</u> <u>(40)</u>	<u>Permanent</u> <u>(90)</u>
Liabilities And Deferred Inflows Of Resources And Fund Balances						
Liabilities						
0400	Due to Other Funds					
0411	Due to Other Governments					
0412	Due to Primary Government					
0413	Due to Component Unit					
0420	Accounts Payable			3,320,835		
0430	Contracts Payable					
0440	Current Portion of Long-Term Debt					
0450	Short-Term Payables					
0461	Accrued Salaries and Benefits					
0462	Payroll Deductions and Withholding					
0480	Unearned Revenues					
0490	Other Current Liabilities					
Total Liabilities				\$3,320,835		
0950	Deferred Inflows of Resources					
Fund Balances						
0810	Nonspendable Fund Balance					
0820	Restricted Fund Balance			39,620,645		
0830	Committed Fund Balance					
0840	Assigned Fund Balance					
0850	Unassigned Fund Balance					
Total Fund Balances				\$39,620,645		
Total Liabilities, Deferred Inflows Of Resources And Fund Balances				\$42,941,480		

LEA : 123467103 Souderton Area SD

Printed 11/30/2022 3:18:31 PM

Amounts Expressed in Whole Dollars		<u>Total Governmental</u> <u>Funds</u>
Liabilities And Deferred Inflows Of Resources And Fund Balances		
Liabilities		
0400 Due to Other Funds		598,925
0411 Due to Other Governments		633,878
0412 Due to Primary Government		
0413 Due to Component Unit		
0420 Accounts Payable		4,265,686
0430 Contracts Payable		
0440 Current Portion of Long-Term Debt		196,281
0450 Short-Term Payables		
0461 Accrued Salaries and Benefits		453,940
0462 Payroll Deductions and Withholding		7,274,481
0480 Unearned Revenues		
0490 Other Current Liabilities		445,827
Total Liabilities		\$13,869,018
0950 Deferred Inflows of Resources		1,036,259
Fund Balances		
0810 Nonspendable Fund Balance		140,559
0820 Restricted Fund Balance		39,802,924
0830 Committed Fund Balance		1,000,000
0840 Assigned Fund Balance		2,131,053
0850 Unassigned Fund Balance		9,099,808
Total Fund Balances		\$52,174,344
Total Liabilities, Deferred Inflows Of Resources And Fund Balances		\$67,079,621

Amounts Expressed in Whole Dollars	<u>General Fund</u> <u>(10)</u>	<u>Student Sponsored</u> <u>Activity Fund</u> <u>(21)</u>	<u>Public Purpose Trust</u> <u>(27)</u>	<u>Other Compt Approved</u> <u>(28)</u>	<u>Athletic / Activity</u> <u>(29)</u>
Revenues					
6000 Revenue from Local Sources	102,239,709				
7000 Revenue from State Sources	31,514,164				
8000 Revenue from Federal Sources	2,759,858				
Total Revenues	\$136,513,731				
Expenditures					
1000 Instruction	87,144,550				
2000 Support Services	39,734,166				
3000 Operation of Non-Instructional Services	1,626,947				
4000 Facilities Acquisition, Construction and Improvement Services	15,180				
5110 Debt Service	10,002,537				
5130 Refund of Prior Year Revenues / Receipts					
5140 Leases	31,686				
Total Expenditures	\$138,555,066				
Excess (Deficiency) Of Revenues Over Expenditures	(\$2,041,335)				
Other Financing Sources (Uses)					
9110 Face Value of Bonds Issued					
9120 Proceeds from Refunding of Bonds					
9130 Bond Premiums					
9200 Proceeds from Extended-Term Financing and Leases	70,899				
9300 Interfund Transfers - IN	814,667				
9400 Sale of or Compensation for Loss of Fixed Assets					
9710 Transfers from Component Units					
9720 Transfers from Primary Governments					
9910 Other Financing Sources Not Listed in the 9000 Series					
9990 Insurance Recoveries					
5120 Debt Service – Refunded Bonds					
5150 Bond Discounts					
5200 Interfund Transfers – Out					
5300 Transfers Out to Component Units/Primary Governments					
Total Other Financing Sources (Uses)	\$885,566				

Amounts Expressed in Whole Dollars		<u>Capital Reserve (690.1850)</u> <u>(31)</u>	<u>Capital Reserve (1431)</u> <u>(32)</u>	<u>Other Capital Projects</u> <u>Fund</u> <u>(39)</u>	<u>Debt Service</u> <u>(40)</u>	<u>Permanent</u> <u>(90)</u>
Revenues						
6000	Revenue from Local Sources			41,199		
7000	Revenue from State Sources					
8000	Revenue from Federal Sources					
Total Revenues				\$41,199		
Expenditures						
1000	Instruction					
2000	Support Services			634,441		
3000	Operation of Non-Instructional Services					
4000	Facilities Acquisition, Construction and Improvement Services			6,336,023		
5110	Debt Service					
5130	Refund of Prior Year Revenues / Receipts					
5140	Leases					
Total Expenditures				\$6,970,464		
Excess (Deficiency) Of Revenues Over Expenditures				(\$6,929,265)		
Other Financing Sources (Uses)						
9110	Face Value of Bonds Issued			42,010,000		
9120	Proceeds from Refunding of Bonds					
9130	Bond Premiums			3,422,763		
9200	Proceeds from Extended-Term Financing and Leases					
9300	Interfund Transfers - IN					
9400	Sale of or Compensation for Loss of Fixed Assets					
9710	Transfers from Component Units					
9720	Transfers from Primary Governments					
9910	Other Financing Sources Not Listed in the 9000 Series					
9990	Insurance Recoveries					
5120	Debt Service – Refunded Bonds					
5150	Bond Discounts					
5200	Interfund Transfers – Out			814,667		
5300	Transfers Out to Component Units/Primary Governments					
Total Other Financing Sources (Uses)				\$44,618,096		

Amounts Expressed in Whole Dollars		<u>Total Governmental Funds</u>
Revenues		
6000	Revenue from Local Sources	102,280,908
7000	Revenue from State Sources	31,514,164
8000	Revenue from Federal Sources	2,759,858
Total Revenues		\$136,554,930
Expenditures		
1000	Instruction	87,144,550
2000	Support Services	40,368,607
3000	Operation of Non-Instructional Services	1,626,947
4000	Facilities Acquisition, Construction and Improvement Services	6,351,203
5110	Debt Service	10,002,537
5130	Refund of Prior Year Revenues / Receipts	
5140	Leases	31,686
Total Expenditures		\$145,525,530
Excess (Deficiency) Of Revenues Over Expenditures		(\$8,970,600)
Other Financing Sources (Uses)		
9110	Face Value of Bonds Issued	42,010,000
9120	Proceeds from Refunding of Bonds	
9130	Bond Premiums	3,422,763
9200	Proceeds from Extended-Term Financing and Leases	70,899
9300	Interfund Transfers - IN	814,667
9400	Sale of or Compensation for Loss of Fixed Assets	
9710	Transfers from Component Units	
9720	Transfers from Primary Governments	
9910	Other Financing Sources Not Listed in the 9000 Series	
9990	Insurance Recoveries	
5120	Debt Service – Refunded Bonds	
5150	Bond Discounts	
5200	Interfund Transfers – Out	814,667
5300	Transfers Out to Component Units/Primary Governments	
Total Other Financing Sources (Uses)		\$45,503,662

Amounts Expressed in Whole Dollars		<u>General Fund</u> <u>(10)</u>	<u>Student Sponsored</u> <u>Activity Fund</u> <u>(21)</u>	<u>Public Purpose Trust</u> <u>(27)</u>	<u>Other Compt Approved</u> <u>(28)</u>	<u>Athletic / Activity</u> <u>(29)</u>
Special And Extraordinary Items						
9920	Special Items – Gains					
9930	Extraordinary Items – Gains					
5520	Special Items – Losses					
5530	Extraordinary Items – Losses					
Net Change In Fund Balances		(\$1,155,769)				
Fund Balance						
0001	Fund Balance - Beginning of Fiscal Year	13,709,468				
Fund Balance - End Of Year		\$12,553,699				

Amounts Expressed in Whole Dollars		<u>Capital Reserve (690.</u> <u>1850)</u> <u>(31)</u>	<u>Capital Reserve (1431)</u> <u>(32)</u>	<u>Other Capital Projects</u> <u>Fund</u> <u>(39)</u>	<u>Debt Service</u> <u>(40)</u>	<u>Permanent</u> <u>(90)</u>
Special And Extraordinary Items						
9920	Special Items – Gains					
9930	Extraordinary Items – Gains					
5520	Special Items – Losses					
5530	Extraordinary Items – Losses					
Net Change In Fund Balances				\$37,688,831		
Fund Balance						
0001	Fund Balance - Beginning of Fiscal Year			1,931,814		
Fund Balance - End Of Year				\$39,620,645		

Amounts Expressed in Whole Dollars		<u>Total Governmental Funds</u>
Special And Extraordinary Items		
9920	Special Items – Gains	
9930	Extraordinary Items – Gains	
5520	Special Items – Losses	
5530	Extraordinary Items – Losses	
Net Change In Fund Balances		\$36,533,062
Fund Balance		
0001	Fund Balance - Beginning of Fiscal Year	15,641,282
Fund Balance - End Of Year		\$52,174,344

LEA : 123467103 Souderton Area SD

Printed 11/30/2022 3:18:59 PM

Amounts Expressed in Whole Dollars		<u>Food Service</u> <u>(51)</u>	<u>Child Care</u> <u>Operations</u> <u>(52)</u>	<u>Other Enterprise</u> <u>(58)</u>	<u>TOTAL</u>	<u>Internal Service</u> <u>(60)</u>
Assets And Deferred Outflows Of Resources						
Current Assets						
0100	Cash and Cash Equivalents	931,811			931,811	1,713,664
0110	Investments					
0130	Due From Other Funds	4,285			4,285	603,143
0141	Due From Other Governments	120,132			120,132	
0142	State Revenue Receivable					
0143	Federal Revenue Receivable					
0146	Due from Primary Government					
0147	Due from Component Unit					
0150	Other Receivables	10,140			10,140	82,218
0170	Inventories	97,754			97,754	
0180	Prepaid Expenses (Expenditures)					
0190	Other Current Assets					
Total Current Assets		\$1,164,122			\$1,164,122	\$2,399,025
Noncurrent Assets						
0211	Land					
0212	Site Improvements (Net)					
0220	Buildings and Building Improvements (Net)					
0230	Machinery, Equipment and Furniture (Net)	372,098			372,098	
0250	Construction in Progress					
0260	Long Term Prepayments					
0290	Other Noncurrent Assets					
Total Noncurrent Assets		\$372,098			\$372,098	
0910	Deferred Outflows of Resources	406,144			406,144	
Total Assets And Deferred Outflows Of Resources		\$1,942,364			\$1,942,364	\$2,399,025

LEA : 123467103 Souderton Area SD

Printed 11/30/2022 3:18:59 PM

Amounts Expressed in Whole Dollars	<u>Food Service</u> <u>(51)</u>	<u>Child Care</u> <u>Operations</u> <u>(52)</u>	<u>Other Enterprise</u> <u>(58)</u>	<u>TOTAL</u>	<u>Internal Service</u> <u>(60)</u>
Liabilities And Deferred Inflows Of Resources And Net Position					
Current Liabilities					
0400 Due to Other Funds	10,467			10,467	
0411 Due to Other Governments					
0413 Due to Component Unit					
0420 Accounts Payable	53,524			53,524	1,152,073
0430 Contracts Payable					
0440 Current Portion of Long-Term Debt					
0450 Short-Term Payables					
0461 Accrued Salaries and Benefits	2,093			2,093	
0462 Payroll Deductions and Withholding					
0480 Unearned Revenues	80,470			80,470	
0490 Other Current Liabilities					105,393
Total Current Liabilities	\$146,554			\$146,554	\$1,257,466
Noncurrent Liabilities					
0510 Bonds Payable					
0520 Extended-Term Financing Agreements Payable					
0530 Lease Obligations					
0540 Accumulated Compensated Absences					
0550 Authority Lease Obligations					
0560 Other Post-Employment Benefits (OPEB)	164,736			164,736	
0570 Net Pension Liability	2,737,041			2,737,041	
0599 Other Noncurrent Liabilities					
Total Noncurrent Liabilities	\$2,901,777			\$2,901,777	
Total Liabilities	\$3,048,331			\$3,048,331	\$1,257,466
0950 Deferred Inflows of Resources	340,834			340,834	
Net Position					
0791 Net Investment in Capital Assets	372,098			372,098	
0008 Restricted Net Position (0792 – 0798)					
0799 Unrestricted Net Position	(1,818,899)			(1,818,899)	1,141,559
Total Net Position	(\$1,446,801)			(\$1,446,801)	\$1,141,559
Total Liabilities And Deferred Inflows Of Resources And Net Position	\$1,942,364			\$1,942,364	\$2,399,025

Amounts Expressed in Whole Dollars	<u>Food Service</u> <u>(51)</u>	<u>Child Care Operations</u> <u>(52)</u>	<u>Other Enterprise</u> <u>(58)</u>	<u>TOTAL</u>	<u>Internal Service</u> <u>(60)</u>
Operating Revenues					
6600 Food Service Revenue	333,240			333,240	
0071 Charges for Services					11,592,508
0072 Other Operating Revenue	16,105			16,105	8,064
Total Operating Revenues	\$349,345			\$349,345	\$11,600,572
Operating Expenses					
100 Personnel Services – Salaries	574,804			574,804	
200 Personnel Services – Employee Benefits	361,471			361,471	11,329,972
300 Purchased Professional and Technical Services	17,908			17,908	
400 Purchased Property Services	65,660			65,660	
500 Other Purchased Services	1,397,424			1,397,424	1,085,811
600 Supplies	258,852			258,852	
740 Depreciation	55,019			55,019	
810 Dues and Fees	1,185			1,185	390,301
880 Refunds of Prior Years' Receipts					
890 Miscellaneous Expenditures					
Total Operating Expenses	\$2,732,323			\$2,732,323	\$12,806,084
Operating Income (Loss)	(\$2,382,978)			(\$2,382,978)	(\$1,205,512)
Non Operating Revenues (Expenses)					
6500 Earnings on Investments	777			777	
6920 Contributions and Donations from Private Sources					
6930 Gains or Losses on Sale of Fixed Assets					
6991 Refunds of a Prior Year Expenditure					
7000 Revenue from State Sources	189,592			189,592	
8000 Revenue from Federal Sources	3,001,421			3,001,421	
9990 Insurance Recoveries					
820 Claims and Judgments Against the LEA					
830 Interest					
TOTAL Non Operating Revenues (Expenses)	\$3,191,790			\$3,191,790	
Income (Loss) Before Contributions And Transfers	\$808,812			\$808,812	(\$1,205,512)

Amounts Expressed in Whole Dollars	<u>Food Service</u> <u>(51)</u>	<u>Child Care Operations</u> <u>(52)</u>	<u>Other Enterprise</u> <u>(58)</u>	<u>TOTAL</u>	<u>Internal Service</u> <u>(60)</u>
Contributions, Transfers, and Special and Extraordinary Items					
5200 Interfund Transfers – Out					
5300 Transfers Out to Component Units/Primary Governments					
5520 Special Items – Losses					
5530 Extraordinary Items – Losses					
9300 Interfund Transfers - IN					
9500 Capital Contributions					
9700 Transfers IN From Component Units/Primary Governments					
9920 Special Items – Gains					
9930 Extraordinary Items – Gains					
Change In Net Position	\$808,812			\$808,812	(\$1,205,512)
0002 Net Position - Beginning of Fiscal Year	(2,255,613)			(2,255,613)	2,347,071
0003 Accounting Changes / Residual Equity Transfers					
Net Position - End Of Year	(\$1,446,801)			(\$1,446,801)	\$1,141,559

LEA : 123467103 Souderton Area SD

Printed 11/30/2022 3:19:26 PM

Amounts Expressed in Whole Dollars	<u>Food Service</u> <u>(51)</u>	<u>Child Care Operations</u> <u>(52)</u>	<u>Other Enterprise</u> <u>(58)</u>	<u>TOTAL</u>	<u>Internal Service(60)</u>
Cash Flows From Operating Activities					
0011 Cash Receipts From Users	720,386			720,386	
0012 Cash Receipts From Assessments Made to Other Funds					10,922,176
0013 Cash Receipts From Earnings on Investments					8,064
0014 Cash Receipts From Other Operating Revenue	16,105			16,105	
0015 Cash Payments To Employees For Services	961,568			961,568	
0016 Cash Payments For Insurance Claims					12,120,084
0017 Cash Payments To Suppliers For Goods and Services	2,217,722			2,217,722	
0018 Cash Payments For Other Operating Expenses	1,185			1,185	390,301
Net Cash Provided By (Used For) Operating Activities	(\$2,443,984)			(\$2,443,984)	(\$1,580,145)
Cash Flows From Non-Capital Financing Activities					
0021 Receipts From Local Sources - 6000					
0022 Receipts From State Sources - 7000	190,128			190,128	
0023 Receipts From Federal Sources -8000	2,766,595			2,766,595	
0024 Notes and Loans Received (Repaid)					
0025 Interest Paid on Notes/Loans - 5100-830					
0026 Operating Transfers In (Out)/Residual Equity Trans					
0027 Operating Transfers In (Out) Primary Government / Comp Unit					
0028 Receipts From Refund of Prior Year Expenditures - 6991					
0029 Special and Extraordinary Gains (losses)					
0030 Receipts from Insurance Recoveries -9990					
Net Cash Prov By (Used for) Non-Capital Financing Activities	\$2,956,723			\$2,956,723	
Cash Flows From Capital and Related Financing Activities					
0031 Payments For Fac Acq, Const, and Imp - 4000	(36,700)			(36,700)	
0032 Gain / (Loss) on Sale of Fixed Assets - 6930					
0033 Proceeds From Extended Term Financing - 9200					
0034 Principal Paid on Financing Agreements					
0035 Interest Paid on Financing Agreements - 5100-830					
0036 (Inc) Dec in Contributed Capital					
Net Cash Prov By (Used for) Capital and Related Financing Activities	(\$36,700)			(\$36,700)	
Cash Flows From Investing Activities					
0041 Earnings on Investments - 6500	777			777	
0042 Purchase of Inv Securities / Deposits to Inv Pools					
0043 Receipts From Investment Pool Withdrawals					
0044 Proceeds from Sale and Maturity of Inv Securities					

LEA : 123467103 Souderton Area SD

Printed 11/30/2022 3:19:26 PM

0045 Loans Received (Paid)

Net Cash Prov By (Used for) Investing Activities	\$777	\$777
--	-------	-------

LEA : 123467103 Souderton Area SD

Printed 11/30/2022 3:19:26 PM

	<u>Food Service</u> <u>(51)</u>	<u>Child Care Operations</u> <u>(52)</u>	<u>Other Enterprise</u> <u>(58)</u>	<u>TOTAL</u>	<u>Internal Service</u> <u>(60)</u>
Net Increase (Decrease) in Cash Flows	476,816			476,816	(1,580,145)
0004 Cash and Cash Equivalents Beginning of Year	454,995			454,995	3,293,809
Cash and Cash Equivalents at Year End	\$931,811			\$931,811	\$1,713,664
Reconciliation of Operating Income (Loss) To Net Cash Provided by (Used For) Operating Activities					
0005 Operating Income (Loss) per REP	(2,382,978)			(2,382,978)	(1,205,512)
Adjustments					
0051 Depreciation and Net Amortization	55,019			55,019	
0052 Provision for Uncollectible Accounts					
0053 Other Adjustments	199,695			199,695	
Effect of Changes in Assets, Liabilities, Deferred Outflows and Deferred Inflows					
0054 (Inc) Dec In Accounts Receivable (0120-0150)	(11,907)			(11,907)	(67,189)
0055 Advances to Other Funds (0160)	399,053			399,053	(603,143)
0056 (Inc) Dec in Inventories (0170)	(12,383)			(12,383)	
0057 (Inc) Dec in Prepaid Expenses (0180)					
0058 (Inc) Dec in Other Current or Noncurrent Assets					
0064 Deferred Outflows (0910)	24,372			24,372	
0059 Inc (Dec) in Accounts Payable (0400-0450)	(634,987)			(634,987)	300,532
0060 Inc (Dec) in Accrued Salaries/Benefits (0461)	(3,145)			(3,145)	
0065 Inc (Dec) in Net Pension Liabilities (0570)	(341,226)			(341,226)	
0066 Inc (Dec) in Other Postemp Benefit Oblig (0560)	8,838			8,838	
0061 Inc (Dec) in Payroll Deductions/Withholding (0462)					
0062 Inc (Dec) in Unearned Revenue (0480)					
0063 Inc (Dec) in Other Current or Noncurrent Liabilities	(30,202)			(30,202)	(4,833)
0067 Deferred Inflows (0950)	285,867			285,867	
Total Adjustments	(\$61,006)			(\$61,006)	(\$374,633)
Cash Provided By (Used for) Total	(\$2,443,984)			(\$2,443,984)	(\$1,580,145)

COMBINED STATEMENT OF CASH FLOWS
SCHEDULE OF NONCASH INVESTING, CAPITAL, AND FINANCING ACTIVITIES

Explanation of Transaction and Balance Sheet Effect	Amount
Total	

LEA : 123467103 Souderton Area SD

Printed 11/30/2022 3:19:35 PM

Amounts Expressed in Whole Dollars		<u>Private Purpose Trust</u> <u>(71)</u>	<u>Investment Trust</u> <u>(72)</u>	<u>Pension Trust</u> <u>(73)</u>	<u>Student Activity Custodial</u> <u>(81)</u>
Assets And Deferred Outflows Of Resources					
Assets					
0100	Cash and Cash Equivalents				244,505
0110	Investments				
0130	Due From Other Funds				
0140	Due from Other Governments, Primary Government and Component Units				
0150	Other Receivables				
0170	Inventories				
0180	Prepaid Expenses (Expenditures)				
0190	Other Current Assets				
0220	Buildings and Building Improvements (Net)				
0230	Machinery, Equipment and Furniture (Net)				
Total Assets					\$244,505
0910	Deferred Outflows of Resources				
Total Assets And Deferred Outflows Of Resources					\$244,505

LEA : 123467103 Souderton Area SD

Printed 11/30/2022 3:19:35 PM

Amounts Expressed in Whole Dollars		<u>Other Custodial</u> <u>(89)</u>	<u>Fiduciary Component Units</u> <u>(98)</u>	<u>Total Fiduciary Funds</u>
Assets And Deferred Outflows Of Resources				
Assets				
0100	Cash and Cash Equivalents			244,505
0110	Investments			
0130	Due From Other Funds			
0140	Due from Other Governments, Primary Government and Component Units			
0150	Other Receivables			
0170	Inventories			
0180	Prepaid Expenses (Expenditures)			
0190	Other Current Assets			
0220	Buildings and Building Improvements (Net)			
0230	Machinery, Equipment and Furniture (Net)			
Total Assets				\$244,505
0910	Deferred Outflows of Resources			
Total Assets And Deferred Outflows Of Resources				\$244,505

LEA : 123467103 Souderton Area SD

Printed 11/30/2022 3:19:35 PM

Amounts Expressed in Whole Dollars		<u>Private Purpose Trust</u> <u>(71)</u>	<u>Investment Trust</u> <u>(72)</u>	<u>Pension Trust</u> <u>(73)</u>	<u>Student Activity Custodial</u> <u>(81)</u>
Liabilities, Deferred Inflows Of Resources And Net Position					
Liabilities					
0400	Due to Other Funds				2,561
0410	Due to Other Governments, Primary Government and Component Units				6,009
0420	Accounts Payable				
0430	Contracts Payable				
0450	Short-Term Payables				
0460	Payroll Accruals and Withholdings				
0480	Unearned Revenues				
0490	Other Current Liabilities				1,914
Total Liabilities					\$10,484
0950	Deferred Inflows of Resources				
Net Position					
0791	Net Investment in Capital Assets				
0009	Restricted Net Position (0792 – 0798)				234,021
0799	Unrestricted Net Position				
Total Net Position					\$234,021
Total Liabilities, Deferred Inflows Of Resources And Net Position					\$244,505

LEA : 123467103 Souderton Area SD

Printed 11/30/2022 3:19:35 PM

Amounts Expressed in Whole Dollars		<u>Other Custodial</u> <u>(89)</u>	<u>Fiduciary Component Units</u> <u>(98)</u>	<u>Total Fiduciary Funds</u>
Liabilities, Deferred Inflows Of Resources And Net Position				
Liabilities				
0400	Due to Other Funds			2,561
0410	Due to Other Governments, Primary Government and Component Units			6,009
0420	Accounts Payable			
0430	Contracts Payable			
0450	Short-Term Payables			
0460	Payroll Accruals and Withholdings			
0480	Unearned Revenues			
0490	Other Current Liabilities			1,914
Total Liabilities				\$10,484
0950	Deferred Inflows of Resources			
Net Position				
0791	Net Investment in Capital Assets			
0009	Restricted Net Position (0792 – 0798)			234,021
0799	Unrestricted Net Position			
Total Net Position				\$234,021
Total Liabilities, Deferred Inflows Of Resources And Net Position				\$244,505

LEA : 123467103 Souderton Area SD

Printed 11/30/2022 3:19:38 PM

Amounts Expressed in Whole Dollars	<u>Private Purpose Trust</u> <u>(71)</u>	<u>Investment Trust</u> <u>(72)</u>	<u>Pension Trust</u> <u>(73)</u>	<u>Student Activity</u> <u>Custodial</u> <u>(81)</u>	<u>Other Custodial</u> <u>(89)</u>	<u>Fiduciary Component</u> <u>Units</u> <u>(98)</u>
Additions						
0091 Gifts and Contributions				155,100		
0095 Net Investment Earnings				131		
0092 Other Additions				234,708		
Deductions						
0093 Scholarships Awarded						
0094 Other Deductions				387,982		
Change In Net Position				\$1,957		
0006 Net Position – Beginning of Fiscal Year				232,064		
0007 Net Position Held in Trust for Pension Benefits						
Net Position - End of Fiscal Year				\$234,021		

LEA : 123467103 Souderton Area SD

Printed 11/30/2022 3:19:38 PM

Amounts Expressed in Whole Dollars		<u>Total Fiduciary</u>
		<u>Funds</u>
Additions		
0091	Gifts and Contributions	155,100
0095	Net Investment Earnings	131
0092	Other Additions	234,708
Deductions		
0093	Scholarships Awarded	
0094	Other Deductions	387,982
Change In Net Position		\$1,957
0006	Net Position – Beginning of Fiscal Year	232,064
0007	Net Position Held in Trust for Pension Benefits	
Net Position - End of Fiscal Year		\$234,021

	Revenue Reported In Current Year	Current Year Tax Accrual	Prior Year Tax Accrual	Taxes Collected In Current Year
Revenue from Local Sources				
6111 Current Real Estate Taxes	84,872,588.44			84,872,588.44
6112 Interim Real Estate Taxes	348,170.88			348,170.88
6113 Public Utility Realty Taxes	94,161.57			94,161.57
6114 Payments in Lieu of Current Taxes - State / Local	340,344.53			340,344.53
6120 Current Per Capita Taxes, Section 679	141,040.09			141,040.09
6141 Current Act 511 Per Capita Taxes	141,040.09			141,040.09
6151 Current Act 511 Earned Income Taxes	9,555,132.43			9,555,132.43
6153 Current Act 511 Real Estate Transfer Taxes	2,102,694.54			2,102,694.54
6411 Delinquent Real Estate Taxes	1,043,228.52			1,043,228.52
6420 Delinquent Per Capita Taxes, Section 679	10,233.70			10,233.70
6440 Delinquent Local Enabling Taxes - Flat Rate Assessments	10,233.70			10,233.70
6500 Earnings on Investments	130,674.15			
6700 Revenues from LEA Activities	602,220.90			
6832 Federal IDEA Revenue Received as Pass Through	1,196,959.57			
6833 Federal ARRA IDEA Revenue Received as Pass Through	279,986.72			
6910 Rentals	113,874.96			
6920 Contributions and Donations from Private Sources	43,746.53			
6941 Regular Day School Tuition	3,058.00			
6942 Summer School Tuition	145.00			
6943 Adult Education Tuition	79,730.25			
6944 Receipts from Other LEAs in Pennsylvania - Education	19,262.50			
6961 Transportation Services Provided Other Pennsylvania LEAs	28,125.76			
6962 Other Services Provided Other Pennsylvania LEAs	90,112.79			
6980 Revenue from Community Services Activities	452,593.50			
6991 Refunds of a Prior Year Expenditure	67,862.00			
6992 Energy Efficiency Revenues and Incentives	54,506.75			
6999 Other Revenues Not Specified Above	417,981.40			
TOTAL Revenue from Local Sources	\$102,239,709.27			\$98,658,868.49

	Revenue Reported In Current Year			
<u>Revenue from State Sources</u>				
7111 Basic Education Funding-Formula	10,251,772.51			
7112 Basic Education Funding-Social Security	2,019,584.53			
7160 Tuition for Orphans Subsidy	72,208.20			
7271 Special Education funds for School-Aged Pupils	3,418,973.22			
7311 Pupil Transportation Subsidy	1,645,823.37			
7312 Nonpublic and Charter School Pupil Transportation Subsidy	244,860.00			
7320 Rental and Sinking Fund Payments / Building Reimbursement Subsidy	924,034.89			
7340 State Property Tax Reduction Allocation	2,265,534.87			
7361 School Safety and Security Grants	195,000.00			
7505 Ready to Learn Block Grant	524,477.00			
7599 Other State Revenue Not Listed Elsewhere in the 7000 Series	2,369.54			
7820 State Share of Retirement Contributions	9,949,526.13			
TOTAL Revenue from State Sources	\$31,514,164.26			

Revenue Reported In Current Year				
Revenue from Federal Sources				
8514 NCLB, Title I - Improving the Academic Achievement of the Disadvantaged	476,349.04			
8515 NCLB, Title II - Preparing, Training and Recruiting High Quality Teachers and Principals	138,628.56			
8516 NCLB, Title III - Language Instruction for Limited English Proficient and Immigrant Students	62,922.22			
8517 NCLB, Title IV - 21St Century Schools	40,012.84			
8741 Elementary and Secondary School Emergency Relief Fund (ESSER)	1,423.93			
8744 ARP ESSER - Elementary and Secondary School Emergency Relief Fund	1,823,059.42			
8752 ARP ESSER Summer Programs	29,836.80			
8754 ARP ESSER Homeless Children and Youth Funds	17,507.00			
8810 School-Based Access Medicaid Reimbursement Program (SBAP) Reimbursements (Access)	157,700.00			
8820 Medical Assistance Reimbursement for Administrative Claiming (Quarterly) Program	12,418.48			
TOTAL Revenue from Federal Sources	\$2,759,858.29			

	Revenue Reported In Current Year			
<u>Other Financing Sources</u>				
9220 Leases	70,898.63			
9330 Capital Projects Fund Transfers	814,666.58			
TOTAL Other Financing Sources	\$885,565.21			
TOTAL FROM ALL SOURCES	\$137,399,297.03			\$98,658,868.49

LEA : 123467103 Souderton Area SD

Printed 11/30/2022 3:19:53 PM

	<u>General Fund (10)</u>	<u>Student Sponsored Activity Fund (21)</u>	<u>Public Purpose Trust (27)</u>	<u>Other Compt Approved (28)</u>	<u>Athletic / Activity (29)</u>	<u>Capital Reserve (690, 1850) (31)</u>
6000 Revenue from Local Sources						
6111 Current Real Estate Taxes	84,872,588.44					
6112 Interim Real Estate Taxes	348,170.88					
6113 Public Utility Realty Taxes	94,161.57					
6114 Payments in Lieu of Current Taxes - State / Local	340,344.53					
6120 Current Per Capita Taxes, Section 679	141,040.09					
6141 Current Act 511 Per Capita Taxes	141,040.09					
6151 Current Act 511 Earned Income Taxes	9,555,132.43					
6153 Current Act 511 Real Estate Transfer Taxes	2,102,694.54					
6411 Delinquent Real Estate Taxes	1,043,228.52					
6420 Delinquent Per Capita Taxes, Section 679	10,233.70					
6440 Delinquent Local Enabling Taxes - Flat Rate Assessments	10,233.70					
6500 Earnings on Investments	130,674.15					
6700 Revenues from LEA Activities	602,220.90					
6832 Federal IDEA Revenue Received as Pass Through	1,196,959.57					
6833 Federal ARRA IDEA Revenue Received as Pass Through	279,986.72					
6910 Rentals	113,874.96					
6920 Contributions and Donations from Private Sources	43,746.53					
6941 Regular Day School Tuition	3,058.00					
6942 Summer School Tuition	145.00					
6943 Adult Education Tuition	79,730.25					
6944 Receipts from Other LEAs in Pennsylvania - Education	19,262.50					
6961 Transportation Services Provided Other Pennsylvania LEAs	28,125.76					
6962 Other Services Provided Other Pennsylvania LEAs	90,112.79					
6980 Revenue from Community Services Activities	452,593.50					
6991 Refunds of a Prior Year Expenditure	67,862.00					
6992 Energy Efficiency Revenues and Incentives	54,506.75					
6999 Other Revenues Not Specified Above	417,981.40					
6000 Total Revenue from Local Sources	\$102,239,709.27					
7000 Revenue from State Sources						
7111 Basic Education Funding-Formula	10,251,772.51					
7112 Basic Education Funding-Social Security	2,019,584.53					
7160 Tuition for Orphans Subsidy	72,208.20					
7271 Special Education funds for School-Aged Pupils	3,418,973.22					
7311 Pupil Transportation Subsidy	1,645,823.37					
7312 Nonpublic and Charter School Pupil Transportation Subsidy	244,860.00					

LEA : 123467103 Souderton Area SD

Printed 11/30/2022 3:19:53 PM

	<u>Capital Reserve</u> <u>(1431) (32)</u>	<u>Other Capital</u> <u>Projects Fund (39)</u>	<u>Debt Service (40)</u>	<u>Permanent (90)</u>	<u>Total</u>
6000 Revenue from Local Sources					
6111 Current Real Estate Taxes					84,872,588.44
6112 Interim Real Estate Taxes					348,170.88
6113 Public Utility Realty Taxes					94,161.57
6114 Payments in Lieu of Current Taxes - State / Local					340,344.53
6120 Current Per Capita Taxes, Section 679					141,040.09
6141 Current Act 511 Per Capita Taxes					141,040.09
6151 Current Act 511 Earned Income Taxes					9,555,132.43
6153 Current Act 511 Real Estate Transfer Taxes					2,102,694.54
6411 Delinquent Real Estate Taxes					1,043,228.52
6420 Delinquent Per Capita Taxes, Section 679					10,233.70
6440 Delinquent Local Enabling Taxes - Flat Rate Assessments					10,233.70
6500 Earnings on Investments		41,199.03			171,873.18
6700 Revenues from LEA Activities					602,220.90
6832 Federal IDEA Revenue Received as Pass Through					1,196,959.57
6833 Federal ARRA IDEA Revenue Received as Pass Through					279,986.72
6910 Rentals					113,874.96
6920 Contributions and Donations from Private Sources					43,746.53
6941 Regular Day School Tuition					3,058.00
6942 Summer School Tuition					145.00
6943 Adult Education Tuition					79,730.25
6944 Receipts from Other LEAs in Pennsylvania - Education					19,262.50
6961 Transportation Services Provided Other Pennsylvania LEAs					28,125.76
6962 Other Services Provided Other Pennsylvania LEAs					90,112.79
6980 Revenue from Community Services Activities					452,593.50
6991 Refunds of a Prior Year Expenditure					67,862.00
6992 Energy Efficiency Revenues and Incentives					54,506.75
6999 Other Revenues Not Specified Above					417,981.40
6000 Total Revenue from Local Sources		\$41,199.03			\$102,280,908.30
7000 Revenue from State Sources					
7111 Basic Education Funding-Formula					10,251,772.51
7112 Basic Education Funding-Social Security					2,019,584.53
7160 Tuition for Orphans Subsidy					72,208.20
7271 Special Education funds for School-Aged Pupils					3,418,973.22
7311 Pupil Transportation Subsidy					1,645,823.37
7312 Nonpublic and Charter School Pupil Transportation Subsidy					244,860.00

LEA : 123467103 Souderton Area SD

Printed 11/30/2022 3:19:53 PM

	<u>General Fund (10)</u>	<u>Student Sponsored Activity Fund (21)</u>	<u>Public Purpose Trust (27)</u>	<u>Other Compt Approved (28)</u>	<u>Athletic / Activity (29)</u>	<u>Capital Reserve (690, 1850) (31)</u>
7000 Revenue from State Sources						
7320 Rental and Sinking Fund Payments / Building Reimbursement Subsidy	924,034.89					
7340 State Property Tax Reduction Allocation	2,265,534.87					
7361 School Safety and Security Grants	195,000.00					
7505 Ready to Learn Block Grant	524,477.00					
7599 Other State Revenue Not Listed Elsewhere in the 7000 Series	2,369.54					
7820 State Share of Retirement Contributions	9,949,526.13					
7000 Total Revenue from State Sources	\$31,514,164.26					
8000 Revenue from Federal Sources						
8514 NCLB, Title I - Improving the Academic Achievement of the Disadvantaged	476,349.04					
8515 NCLB, Title II - Preparing, Training and Recruiting High Quality Teachers and Principals	138,628.56					
8516 NCLB, Title III - Language Instruction for Limited English Proficient and Immigrant Students	62,922.22					
8517 NCLB, Title IV - 21st Century Schools	40,012.84					
8741 Elementary and Secondary School Emergency Relief Fund (ESSER)	1,423.93					
8744 ARP ESSER - Elementary and Secondary School Emergency Relief Fund	1,823,059.42					
8752 ARP ESSER Summer Programs	29,836.80					
8754 ARP ESSER Homeless Children and Youth Funds	17,507.00					
8810 School-Based Access Medicaid Reimbursement Program (SBAP) Reimbursements (Access)	157,700.00					
8820 Medical Assistance Reimbursement for Administrative Claiming (Quarterly) Program	12,418.48					
8000 Total Revenue from Federal Sources	\$2,759,858.29					
9000 Other Financing Sources						
9110 Face Value of Bonds Issued						
9130 Bond Premiums						
9220 Leases	70,898.63					
9330 Capital Projects Fund Transfers	814,666.58					
9000 Total Other Financing Sources	\$885,565.21					
Total From All Sources	\$137,399,297.03					

LEA : 123467103 Souderton Area SD

Printed 11/30/2022 3:19:53 PM

	<u>Capital Reserve</u> <u>(1431) (32)</u>	<u>Other Capital</u> <u>Projects Fund (39)</u>	<u>Debt Service (40)</u>	<u>Permanent (90)</u>	<u>Total</u>
7000 Revenue from State Sources					
7320 Rental and Sinking Fund Payments / Building Reimbursement Subsidy					924,034.89
7340 State Property Tax Reduction Allocation					2,265,534.87
7361 School Safety and Security Grants					195,000.00
7505 Ready to Learn Block Grant					524,477.00
7599 Other State Revenue Not Listed Elsewhere in the 7000 Series					2,369.54
7820 State Share of Retirement Contributions					9,949,526.13
7000 Total Revenue from State Sources					\$31,514,164.26
8000 Revenue from Federal Sources					
8514 NCLB, Title I - Improving the Academic Achievement of the Disadvantaged					476,349.04
8515 NCLB, Title II - Preparing, Training and Recruiting High Quality Teachers and Principals					138,628.56
8516 NCLB, Title III - Language Instruction for Limited English Proficient and Immigrant Students					62,922.22
8517 NCLB, Title IV - 21st Century Schools					40,012.84
8741 Elementary and Secondary School Emergency Relief Fund (ESSER)					1,423.93
8744 ARP ESSER - Elementary and Secondary School Emergency Relief Fund					1,823,059.42
8752 ARP ESSER Summer Programs					29,836.80
8754 ARP ESSER Homeless Children and Youth Funds					17,507.00
8810 School-Based Access Medicaid Reimbursement Program (SBAP) Reimbursements (Access)					157,700.00
8820 Medical Assistance Reimbursement for Administrative Claiming (Quarterly) Program					12,418.48
8000 Total Revenue from Federal Sources					\$2,759,858.29
9000 Other Financing Sources					
9110 Face Value of Bonds Issued		42,010,000.00			42,010,000.00
9130 Bond Premiums		3,422,763.30			3,422,763.30
9220 Leases					70,898.63
9330 Capital Projects Fund Transfers					814,666.58
9000 Total Other Financing Sources		\$45,432,763.30			\$46,318,328.51
Total From All Sources		\$45,473,962.33			\$182,873,259.36

LEA : 123467103 Souderton Area SD

Printed 11/30/2022 3:20:02 PM

	<u>General Fund (10)</u>	<u>Student Sponsored Activity Fund (21)</u>	<u>Public Purpose Trust (27)</u>	<u>Other Compt Approved (28)</u>	<u>Athletic / Activity (29)</u>	<u>Capital Reserve (690.1850) (31)</u>
Revenue from Local Sources	102,239,709.27					
Revenue from State Sources	31,514,164.26					
Revenue from Federal Sources	2,759,858.29					
Other Financing Sources	885,565.21					
Total From All Sources	\$137,399,297.03					

LEA : 123467103 Souderton Area SD

Printed 11/30/2022 3:20:02 PM

	<u>Capital Reserve (1431)</u> <u>(32)</u>	<u>Other Capital Projects</u> <u>Fund (39)</u>	<u>Debt Service (40)</u>	<u>Permanent (90)</u>	<u>Total</u>
Revenue from Local Sources		41,199.03			102,280,908.30
Revenue from State Sources					31,514,164.26
Revenue from Federal Sources					2,759,858.29
Other Financing Sources		45,432,763.30			46,318,328.51
Total From All Sources		\$45,473,962.33			\$182,873,259.36

LEA : 123467103 Souderton Area SD

Printed 11/30/2022 3:20:16 PM

General Fund (10)

1000 Instruction	Total
100 <u>Personnel Services – Salaries</u>	
100 Personnel Services – Salaries	42,201,919.31
Total Personnel Services – Salaries	\$42,201,919.31
200 <u>Personnel Services – Employee Benefits</u>	
210 Group Insurance – Contracted Provider	69,726.57
220 Social Security Contributions	3,095,895.45
230 PSERS Retirement Contributions	14,765,539.04
240 Tuition Reimbursement	12.39
250 Unemployment Compensation	1,615.19
260 Workers' Compensation	154,390.44
270 Group Insurance – Self-Insurance	6,010,372.89
291 Other Retirement Plans	63,597.50
Total Personnel Services – Employee Benefits	\$24,161,149.47
300 <u>Purchased Professional and Technical Services</u>	
322 Professional Educational Services – Ius	2,830,343.47
323 Professional Educational Services – Other Educational Agencies	412,554.13
329 Professional Educational Services – Other	24,675.00
330 Other Professional Services	2,564,026.11
390 Other Purchased Professional and Technical Services	21,544.00
Total Purchased Professional and Technical Services	\$5,853,142.71
400 <u>Purchased Property Services</u>	
430 Repairs and Maintenance Services	6,641.87
440 Rentals	415.00
Total Purchased Property Services	\$7,056.87
500 <u>Other Purchased Services</u>	
510 Student Transportation Services	94,737.81
530 Communications	4,219.85
550 Printing and Binding	14,727.48
561 Tuition To Other School Districts Within the State	453,898.16
562 Tuition To Pennsylvania Charter Schools	4,508,557.10
563 Tuition To Nonpublic Schools	2,190,297.75
564 Tuition To Career and Technology Centers	1,758,943.98
566 Tuition To Institutions of Higher Education and Technical Institutes	3,000.00
567 Tuition To Approved Private Schools (APS) and PA Chartered Schools for the Deaf and Blind	326,227.94
568 Tuition To Private Residential Rehabilitative Institutions (PRRI) [In-State] and Detention Centers	1,744,745.49
569 Tuition – Other	155,820.00
580 Travel	3,122.34
594 IU Payment By Withholding for Institutionalized Children's Programs – Special Classes	2,312.19
599 Other Miscellaneous Purchased Services	14,742.50
Total Other Purchased Services	\$11,275,352.59
600 <u>Supplies</u>	
610 General Supplies	690,660.79
630 Food	7,920.74
640 Books and Periodicals	133,265.79

LEA : 123467103 Souderton Area SD

Printed 11/30/2022 3:20:16 PM

General Fund (10)	
1000 Instruction	<u>Total</u>
600 <u>Supplies</u>	
650 Supplies & Fees – Technology Related	453,094.86
Total Supplies	\$1,284,942.18
700 <u>Property</u>	
752 Capital Equipment – Original and Additional	246,118.70
756 Capitalized Technology Equipment – Original	342,828.04
762 Capitalized Equipment - Replacement	17,584.25
766 Capitalized Technology Equipment – Replacement	1,718,468.76
Total Property	\$2,324,999.75
800 <u>Other Objects</u>	
810 Dues and Fees	15,617.17
820 Claims and Judgments Against the LEA	20,120.00
890 Miscellaneous Expenditures	250.00
Total Other Objects	\$35,987.17
Total 1000 Instruction	\$87,144,550.05

LEA : 123467103 Souderton Area SD

Printed 11/30/2022 3:20:16 PM

General Fund (10)

1100 Regular Programs – Elementary / Secondary

	Elementary	Secondary	Federal	Total
100 <u>Personnel Services – Salaries</u>				
100 Personnel Services – Salaries	14,420,844.94	16,848,055.16	908,335.98	32,177,236.08
Total Personnel Services – Salaries	\$14,420,844.94	\$16,848,055.16	\$908,335.98	\$32,177,236.08
200 <u>Personnel Services – Employee Benefits</u>				
210 Group Insurance – Contracted Provider	29,878.89	35,912.78	6.02	65,797.69
220 Social Security Contributions	1,067,066.96	1,240,796.46	55,514.24	2,363,377.66
230 PSERS Retirement Contributions	5,088,696.34	5,947,411.05	261,945.06	11,298,052.45
250 Unemployment Compensation	260.46	133.16	31.66	425.28
260 Workers' Compensation	48,719.78	52,449.67	1,409.80	102,579.25
270 Group Insurance – Self-Insurance	2,138,488.80	2,465,343.72		4,603,832.52
291 Other Retirement Plans	14,967.50	35,030.00		49,997.50
Total Personnel Services – Employee Benefits	\$8,388,078.73	\$9,777,076.84	\$318,906.78	\$18,484,062.35
300 <u>Purchased Professional and Technical Services</u>				
322 Professional Educational Services – lus		5,519.88		5,519.88
329 Professional Educational Services – Other		2,000.00		2,000.00
330 Other Professional Services	5,761.30	10,305.05	50,119.80	66,186.15
390 Other Purchased Professional and Technical Services		1,405.00		1,405.00
Total Purchased Professional and Technical Services	\$5,761.30	\$19,229.93	\$50,119.80	\$75,111.03
400 <u>Purchased Property Services</u>				
430 Repairs and Maintenance Services	820.00	5,821.87		6,641.87
Total Purchased Property Services	\$820.00	\$5,821.87		\$6,641.87
500 <u>Other Purchased Services</u>				
510 Student Transportation Services	690.00	23,552.01		24,242.01
530 Communications	110.00			110.00
561 Tuition To Other School Districts Within the State			407,886.47	407,886.47
562 Tuition To Pennsylvania Charter Schools	1,994,233.56	983,404.78		2,977,638.34
568 Tuition To Private Residential Rehabilitative Institutions (PRRI) [In-State] and Detention Centers		395,722.13		395,722.13
569 Tuition – Other			6,447.00	6,447.00
580 Travel	32.76	596.91		629.67
599 Other Miscellaneous Purchased Services	494.48			494.48
Total Other Purchased Services	\$1,995,560.80	\$1,403,275.83	\$414,333.47	\$3,813,170.10
600 <u>Supplies</u>				
610 General Supplies	141,069.30	284,726.47	121,462.51	547,258.28
630 Food	327.50	218.56		546.06
640 Books and Periodicals	74,031.52	36,842.80	3,386.31	114,260.63
650 Supplies & Fees – Technology Related	219,989.33	174,759.59	9,570.45	404,319.37
Total Supplies	\$435,417.65	\$496,547.42	\$134,419.27	\$1,066,384.34
700 <u>Property</u>				
752 Capital Equipment – Original and Additional	246,118.70			246,118.70
756 Capitalized Technology Equipment – Original			342,828.04	342,828.04
762 Capitalized Equipment - Replacement		14,003.00		14,003.00
766 Capitalized Technology Equipment – Replacement	903,600.00	814,868.76		1,718,468.76
Total Property	\$1,149,718.70	\$828,871.76	\$342,828.04	\$2,321,418.50

LEA : 123467103 Souderton Area SD

Printed 11/30/2022 3:20:16 PM

General Fund (10)

1100 Regular Programs – Elementary / Secondary

Elementary

Secondary

Federal

Total

800 Other Objects

810 Dues and Fees

2,921.00

2,921.00

890 Miscellaneous Expenditures

100.00

100.00

Total Other Objects	\$100.00	\$2,921.00		\$3,021.00
Total 1100 Regular Programs – Elementary / Secondary	\$26,396,302.12	\$29,381,799.81	\$2,168,943.34	\$57,947,045.27

LEA : 123467103 Souderton Area SD

Printed 11/30/2022 3:20:16 PM

General Fund (10)

1110 Regular Programs

	Elementary	Secondary	Federal	Total
100 <u>Personnel Services – Salaries</u>				
100 Personnel Services – Salaries	14,420,844.94	16,848,055.16	516,797.44	31,785,697.54
Total Personnel Services – Salaries	\$14,420,844.94	\$16,848,055.16	\$516,797.44	\$31,785,697.54
200 <u>Personnel Services – Employee Benefits</u>				
210 Group Insurance – Contracted Provider	29,878.89	35,912.78	6.02	65,797.69
220 Social Security Contributions	1,067,066.96	1,240,796.46	26,713.91	2,334,577.33
230 PSERS Retirement Contributions	5,088,696.34	5,947,411.05	127,572.29	11,163,679.68
250 Unemployment Compensation	260.46	133.16	17.40	411.02
260 Workers' Compensation	48,719.78	52,449.67	1,226.45	102,395.90
270 Group Insurance – Self-Insurance	2,138,488.80	2,465,343.72		4,603,832.52
291 Other Retirement Plans	14,967.50	35,030.00		49,997.50
Total Personnel Services – Employee Benefits	\$8,388,078.73	\$9,777,076.84	\$155,536.07	\$18,320,691.64
300 <u>Purchased Professional and Technical Services</u>				
322 Professional Educational Services – lus		5,519.88		5,519.88
329 Professional Educational Services – Other		2,000.00		2,000.00
330 Other Professional Services	5,761.30	10,305.05	50,119.80	66,186.15
390 Other Purchased Professional and Technical Services		1,405.00		1,405.00
Total Purchased Professional and Technical Services	\$5,761.30	\$19,229.93	\$50,119.80	\$75,111.03
400 <u>Purchased Property Services</u>				
430 Repairs and Maintenance Services	820.00	5,821.87		6,641.87
Total Purchased Property Services	\$820.00	\$5,821.87		\$6,641.87
500 <u>Other Purchased Services</u>				
510 Student Transportation Services	690.00	23,552.01		24,242.01
530 Communications	110.00			110.00
561 Tuition To Other School Districts Within the State			396,186.47	396,186.47
562 Tuition To Pennsylvania Charter Schools	1,994,233.56	983,404.78		2,977,638.34
568 Tuition To Private Residential Rehabilitative Institutions (PRRI) [In-State] and Detention Centers		395,722.13		395,722.13
569 Tuition – Other			6,447.00	6,447.00
580 Travel	32.76	596.91		629.67
599 Other Miscellaneous Purchased Services	494.48			494.48
Total Other Purchased Services	\$1,995,560.80	\$1,403,275.83	\$402,633.47	\$3,801,470.10
600 <u>Supplies</u>				
610 General Supplies	141,069.30	284,726.47	95,072.70	520,868.47
630 Food	327.50	218.56		546.06
640 Books and Periodicals	74,031.52	36,842.80		110,874.32
650 Supplies & Fees – Technology Related	219,989.33	174,759.59	650.92	395,399.84
Total Supplies	\$435,417.65	\$496,547.42	\$95,723.62	\$1,027,688.69
700 <u>Property</u>				
752 Capital Equipment – Original and Additional	246,118.70			246,118.70
756 Capitalized Technology Equipment – Original			342,828.04	342,828.04
762 Capitalized Equipment - Replacement		14,003.00		14,003.00
766 Capitalized Technology Equipment – Replacement	903,600.00	814,868.76		1,718,468.76
Total Property	\$1,149,718.70	\$828,871.76	\$342,828.04	\$2,321,418.50

LEA : 123467103 Souderton Area SD

Printed 11/30/2022 3:20:16 PM

General Fund (10)

1110 Regular Programs

800 Other Objects

	<u>Elementary</u>	<u>Secondary</u>	<u>Federal</u>	<u>Total</u>
810 Dues and Fees		2,921.00		2,921.00
890 Miscellaneous Expenditures	100.00			100.00
Total Other Objects	\$100.00	\$2,921.00		\$3,021.00
Total 1110 Regular Programs	\$26,396,302.12	\$29,381,799.81	\$1,563,638.44	\$57,341,740.37

LEA : 123467103 Souderton Area SD

Printed 11/30/2022 3:20:16 PM

General Fund (10)

1190 Federally-Funded Regular Programs	<u>Elementary</u>	<u>Secondary</u>	<u>Federal</u>	<u>Total</u>
100 <u>Personnel Services – Salaries</u>				
100 Personnel Services – Salaries			391,538.54	391,538.54
Total Personnel Services – Salaries			\$391,538.54	\$391,538.54
200 <u>Personnel Services – Employee Benefits</u>				
220 Social Security Contributions			28,800.33	28,800.33
230 PSERS Retirement Contributions			134,372.77	134,372.77
250 Unemployment Compensation			14.26	14.26
260 Workers' Compensation			183.35	183.35
Total Personnel Services – Employee Benefits			\$163,370.71	\$163,370.71
500 <u>Other Purchased Services</u>				
561 Tuition To Other School Districts Within the State			11,700.00	11,700.00
Total Other Purchased Services			\$11,700.00	\$11,700.00
600 <u>Supplies</u>				
610 General Supplies			26,389.81	26,389.81
640 Books and Periodicals			3,386.31	3,386.31
650 Supplies & Fees – Technology Related			8,919.53	8,919.53
Total Supplies			\$38,695.65	\$38,695.65
Total 1190 Federally-Funded Regular Programs			\$605,304.90	\$605,304.90

LEA : 123467103 Souderton Area SD

Printed 11/30/2022 3:20:16 PM

General Fund (10)

1200 Special Programs – Elementary / Secondary	Elementary	Secondary	Federal	Total
100 Personnel Services – Salaries				
100 Personnel Services – Salaries	4,258,603.99	4,680,785.09	794,689.29	9,734,078.37
Total Personnel Services – Salaries	\$4,258,603.99	\$4,680,785.09	\$794,689.29	\$9,734,078.37
200 Personnel Services – Employee Benefits				
210 Group Insurance – Contracted Provider	1,380.34	2,055.37		3,435.71
220 Social Security Contributions	324,220.92	357,803.22	28,806.28	710,830.42
230 PSERS Retirement Contributions	1,553,062.29	1,710,095.76	139,174.54	3,402,332.59
250 Unemployment Compensation	335.59	481.22		816.81
260 Workers' Compensation	23,859.85	26,770.92		50,630.77
270 Group Insurance – Self-Insurance	607,453.51	799,086.86		1,406,540.37
291 Other Retirement Plans	2,400.00	7,600.00		10,000.00
Total Personnel Services – Employee Benefits	\$2,512,712.50	\$2,903,893.35	\$167,980.82	\$5,584,586.67
300 Purchased Professional and Technical Services				
322 Professional Educational Services – Ius	1,298,224.18	1,360,430.41	157,700.00	2,816,354.59
323 Professional Educational Services – Other Educational Agencies		103,647.03		103,647.03
329 Professional Educational Services – Other	3,700.00	18,975.00		22,675.00
330 Other Professional Services	892,862.50	1,581,612.46	3,332.00	2,477,806.96
Total Purchased Professional and Technical Services	\$2,194,786.68	\$3,064,664.90	\$161,032.00	\$5,420,483.58
500 Other Purchased Services				
510 Student Transportation Services	46,470.37	19,735.43		66,205.80
530 Communications		4,109.85		4,109.85
550 Printing and Binding		1,168.85		1,168.85
561 Tuition To Other School Districts Within the State		225.00		225.00
562 Tuition To Pennsylvania Charter Schools	956,580.10	574,338.66		1,530,918.76
563 Tuition To Nonpublic Schools	727,146.82	1,463,150.93		2,190,297.75
564 Tuition To Career and Technology Centers		12,300.00		12,300.00
566 Tuition To Institutions of Higher Education and Technical Institutes		3,000.00		3,000.00
567 Tuition To Approved Private Schools (APS) and PA Chartered Schools for the Deaf and Blind	144,620.00	181,607.94		326,227.94
568 Tuition To Private Residential Rehabilitative Institutions (PRRI) [In-State] and Detention Centers	51,004.47	1,298,018.89		1,349,023.36
569 Tuition – Other	9,580.00	139,793.00		149,373.00
580 Travel	1,509.35	688.67		2,198.02
594 IU Payment By Withholding for Institutionalized Children’s Programs – Special Classes	2,312.19			2,312.19
599 Other Miscellaneous Purchased Services	672.00	4,003.36		4,675.36
Total Other Purchased Services	\$1,939,895.30	\$3,702,140.58		\$5,642,035.88
600 Supplies				
610 General Supplies	27,747.11	16,036.65	93,791.28	137,575.04
630 Food		161.35		161.35
640 Books and Periodicals	12,371.99	6,633.17		19,005.16
650 Supplies & Fees – Technology Related	15,534.03	33,241.46		48,775.49
Total Supplies	\$55,653.13	\$56,072.63	\$93,791.28	\$205,517.04
700 Property				
762 Capitalized Equipment - Replacement		3,581.25		3,581.25
Total Property		\$3,581.25		\$3,581.25

LEA : 123467103 Souderton Area SD

Printed 11/30/2022 3:20:16 PM

General Fund (10)

1200 Special Programs – Elementary / Secondary	<u>Elementary</u>	<u>Secondary</u>	<u>Federal</u>	<u>Total</u>
800 <u>Other Objects</u>				
810 Dues and Fees		146.00		146.00
820 Claims and Judgments Against the LEA	9,000.00	11,120.00		20,120.00
890 Miscellaneous Expenditures		150.00		150.00
Total Other Objects	\$9,000.00	\$11,416.00		\$20,416.00
Total 1200 Special Programs – Elementary / Secondary	\$10,970,651.60	\$14,422,553.80	\$1,217,493.39	\$26,610,698.79

LEA : 123467103 Souderton Area SD

Printed 11/30/2022 3:20:16 PM

General Fund (10)

1210 Life Skills Support

	Elementary	Secondary	Federal	Total
100 <u>Personnel Services – Salaries</u>				
100 Personnel Services – Salaries	131,859.73	721,286.49		853,146.22
Total Personnel Services – Salaries	\$131,859.73	\$721,286.49		\$853,146.22
200 <u>Personnel Services – Employee Benefits</u>				
210 Group Insurance – Contracted Provider		10.08		10.08
220 Social Security Contributions	9,684.97	53,416.96		63,101.93
230 PSERS Retirement Contributions	45,832.55	251,975.83		297,808.38
250 Unemployment Compensation	64.12	196.10		260.22
260 Workers' Compensation	712.06	3,894.92		4,606.98
270 Group Insurance – Self-Insurance	26,327.56	67,073.83		93,401.39
Total Personnel Services – Employee Benefits	\$82,621.26	\$376,567.72		\$459,188.98
300 <u>Purchased Professional and Technical Services</u>				
322 Professional Educational Services – Ius	40,157.00	62,115.20		102,272.20
330 Other Professional Services	61,007.64	310,654.97		371,662.61
Total Purchased Professional and Technical Services	\$101,164.64	\$372,770.17		\$473,934.81
500 <u>Other Purchased Services</u>				
580 Travel		105.77		105.77
599 Other Miscellaneous Purchased Services		51.50		51.50
Total Other Purchased Services		\$157.27		\$157.27
600 <u>Supplies</u>				
610 General Supplies	853.60	2,639.75		3,493.35
640 Books and Periodicals	55.91	268.47		324.38
650 Supplies & Fees – Technology Related	11,659.00	10,194.93		21,853.93
Total Supplies	\$12,568.51	\$13,103.15		\$25,671.66
Total 1210 Life Skills Support	\$328,214.14	\$1,483,884.80		\$1,812,098.94

LEA : 123467103 Souderton Area SD

Printed 11/30/2022 3:20:16 PM

General Fund (10)

1220 Sensory Support	Elementary	Secondary	Federal	Total
100 <u>Personnel Services – Salaries</u>				
100 Personnel Services – Salaries	633,112.71	143,170.53		776,283.24
Total Personnel Services – Salaries	\$633,112.71	\$143,170.53		\$776,283.24
200 <u>Personnel Services – Employee Benefits</u>				
210 Group Insurance – Contracted Provider	13.04	4.60		17.64
220 Social Security Contributions	46,937.78	10,571.73		57,509.51
230 PSERS Retirement Contributions	221,210.15	50,023.77		271,233.92
250 Unemployment Compensation	64.46	21.94		86.40
260 Workers' Compensation	3,418.31	773.07		4,191.38
270 Group Insurance – Self-Insurance	78,615.04	10,953.24		89,568.28
Total Personnel Services – Employee Benefits	\$350,258.78	\$72,348.35		\$422,607.13
300 <u>Purchased Professional and Technical Services</u>				
322 Professional Educational Services – Ius		3,430.89		3,430.89
330 Other Professional Services	214,766.43	118,769.82		333,536.25
Total Purchased Professional and Technical Services	\$214,766.43	\$122,200.71		\$336,967.14
500 <u>Other Purchased Services</u>				
580 Travel	54.41			54.41
Total Other Purchased Services	\$54.41			\$54.41
600 <u>Supplies</u>				
610 General Supplies	1,290.73	1,556.64		2,847.37
640 Books and Periodicals	81.80			81.80
650 Supplies & Fees – Technology Related	890.50	599.00		1,489.50
Total Supplies	\$2,263.03	\$2,155.64		\$4,418.67
Total 1220 Sensory Support	\$1,200,455.36	\$339,875.23		\$1,540,330.59

LEA : 123467103 Souderton Area SD

Printed 11/30/2022 3:20:16 PM

General Fund (10)

1230 Emotional Support

	Elementary	Secondary	Federal	Total
100 <u>Personnel Services – Salaries</u>				
100 Personnel Services – Salaries	602,199.39	375,998.31	794,689.29	1,772,886.99
Total Personnel Services – Salaries	\$602,199.39	\$375,998.31	\$794,689.29	\$1,772,886.99
200 <u>Personnel Services – Employee Benefits</u>				
210 Group Insurance – Contracted Provider	19.13	23.04		42.17
220 Social Security Contributions	56,979.95	43,423.57	28,806.28	129,209.80
230 PSERS Retirement Contributions	277,435.87	207,510.74	139,174.54	624,121.15
250 Unemployment Compensation	86.59	161.10		247.69
260 Workers' Compensation	5,150.32	4,422.53		9,572.85
270 Group Insurance – Self-Insurance	118,605.66	82,039.68		200,645.34
Total Personnel Services – Employee Benefits	\$458,277.52	\$337,580.66	\$167,980.82	\$963,839.00
300 <u>Purchased Professional and Technical Services</u>				
322 Professional Educational Services – Ius	505,440.76	288,664.09		794,104.85
330 Other Professional Services	435,784.04	445,096.20		880,880.24
Total Purchased Professional and Technical Services	\$941,224.80	\$733,760.29		\$1,674,985.09
500 <u>Other Purchased Services</u>				
510 Student Transportation Services		150.00		150.00
580 Travel	274.12			274.12
Total Other Purchased Services	\$274.12	\$150.00		\$424.12
600 <u>Supplies</u>				
610 General Supplies	4,217.20	2,791.52		7,008.72
640 Books and Periodicals	27.48	261.99		289.47
650 Supplies & Fees – Technology Related	359.40	6,307.00		6,666.40
Total Supplies	\$4,604.08	\$9,360.51		\$13,964.59
Total 1230 Emotional Support	\$2,006,579.91	\$1,456,849.77	\$962,670.11	\$4,426,099.79

LEA : 123467103 Souderton Area SD

Printed 11/30/2022 3:20:16 PM

General Fund (10)

1240 Academic Support

	<u>Elementary</u>	<u>Secondary</u>	<u>Federal</u>	<u>Total</u>
100 <u>Personnel Services – Salaries</u>				
100 Personnel Services – Salaries	2,095,365.24	2,955,471.79		5,050,837.03
Total Personnel Services – Salaries	\$2,095,365.24	\$2,955,471.79		\$5,050,837.03
200 <u>Personnel Services – Employee Benefits</u>				
210 Group Insurance – Contracted Provider	43.83	106.70		150.53
220 Social Security Contributions	151,900.28	215,040.99		366,941.27
230 PSERS Retirement Contributions	731,887.05	1,032,324.05		1,764,211.10
250 Unemployment Compensation	28.80	28.80		57.60
260 Workers' Compensation	11,314.59	15,957.63		27,272.22
270 Group Insurance – Self-Insurance	282,660.31	598,265.23		880,925.54
Total Personnel Services – Employee Benefits	\$1,177,834.86	\$1,861,723.40		\$3,039,558.26
300 <u>Purchased Professional and Technical Services</u>				
322 Professional Educational Services – Ius	81,253.35	51,123.96		132,377.31
330 Other Professional Services	67,838.76	319,627.54		387,466.30
Total Purchased Professional and Technical Services	\$149,092.11	\$370,751.50		\$519,843.61
600 <u>Supplies</u>				
610 General Supplies	9,011.53	1,048.66		10,060.19
640 Books and Periodicals	12,147.51	6,102.71		18,250.22
650 Supplies & Fees – Technology Related	935.00	9,012.40		9,947.40
Total Supplies	\$22,094.04	\$16,163.77		\$38,257.81
Total 1240 Academic Support	\$3,444,386.25	\$5,204,110.46		\$8,648,496.71

LEA : 123467103 Souderton Area SD

Printed 11/30/2022 3:20:16 PM

General Fund (10)

1241 Learning Support – Public	Elementary	Secondary	Federal	Total
100 Personnel Services – Salaries				
100 Personnel Services – Salaries	1,856,939.64	2,646,359.79		4,503,299.43
Total Personnel Services – Salaries	\$1,856,939.64	\$2,646,359.79		\$4,503,299.43
200 Personnel Services – Employee Benefits				
210 Group Insurance – Contracted Provider	33.27	91.58		124.85
220 Social Security Contributions	135,407.02	191,983.02		327,390.04
230 PSERS Retirement Contributions	648,581.03	924,319.99		1,572,901.02
260 Workers' Compensation	10,027.33	14,288.79		24,316.12
270 Group Insurance – Self-Insurance	245,873.96	557,216.91		803,090.87
Total Personnel Services – Employee Benefits	\$1,039,922.61	\$1,687,900.29		\$2,727,822.90
300 Purchased Professional and Technical Services				
322 Professional Educational Services – lus	81,253.35	51,123.96		132,377.31
330 Other Professional Services	67,838.76	319,627.54		387,466.30
Total Purchased Professional and Technical Services	\$149,092.11	\$370,751.50		\$519,843.61
600 Supplies				
610 General Supplies	8,794.62	1,048.66		9,843.28
640 Books and Periodicals	12,107.94	6,102.71		18,210.65
650 Supplies & Fees – Technology Related	875.00	9,012.40		9,887.40
Total Supplies	\$21,777.56	\$16,163.77		\$37,941.33
Total 1241 Learning Support – Public	\$3,067,731.92	\$4,721,175.35		\$7,788,907.27

LEA : 123467103 Souderton Area SD

Printed 11/30/2022 3:20:16 PM

General Fund (10)				
1243 Gifted Support	Elementary	Secondary	Federal	Total
100 Personnel Services – Salaries				
100 Personnel Services – Salaries	238,425.60	309,112.00		547,537.60
Total Personnel Services – Salaries	\$238,425.60	\$309,112.00		\$547,537.60
200 Personnel Services – Employee Benefits				
210 Group Insurance – Contracted Provider	10.56	15.12		25.68
220 Social Security Contributions	16,493.26	23,057.97		39,551.23
230 PSERS Retirement Contributions	83,306.02	108,004.06		191,310.08
250 Unemployment Compensation	28.80	28.80		57.60
260 Workers' Compensation	1,287.26	1,668.84		2,956.10
270 Group Insurance – Self-Insurance	36,786.35	41,048.32		77,834.67
Total Personnel Services – Employee Benefits	\$137,912.25	\$173,823.11		\$311,735.36
600 Supplies				
610 General Supplies	216.91			216.91
640 Books and Periodicals	39.57			39.57
650 Supplies & Fees – Technology Related	60.00			60.00
Total Supplies	\$316.48			\$316.48
Total 1243 Gifted Support	\$376,654.33	\$482,935.11		\$859,589.44

LEA : 123467103 Souderton Area SD

Printed 11/30/2022 3:20:16 PM

General Fund (10)

1260 Physical Support

	<u>Elementary</u>	<u>Secondary</u>	<u>Federal</u>	<u>Total</u>
100 <u>Personnel Services – Salaries</u>				
100 Personnel Services – Salaries	285,128.15	58,515.00		343,643.15
Total Personnel Services – Salaries	\$285,128.15	\$58,515.00		\$343,643.15
200 <u>Personnel Services – Employee Benefits</u>				
210 Group Insurance – Contracted Provider	17.24			17.24
220 Social Security Contributions	20,949.37	4,147.40		25,096.77
230 PSERS Retirement Contributions	99,624.06	20,445.07		120,069.13
250 Unemployment Compensation	48.17	19.20		67.37
260 Workers' Compensation	1,116.53			1,116.53
Total Personnel Services – Employee Benefits	\$121,755.37	\$24,611.67		\$146,367.04
600 <u>Supplies</u>				
610 General Supplies	237.00			237.00
Total Supplies	\$237.00			\$237.00
Total 1260 Physical Support	\$407,120.52	\$83,126.67		\$490,247.19

LEA : 123467103 Souderton Area SD

Printed 11/30/2022 3:20:16 PM

General Fund (10)

1270 Multi-Handicapped Support	Elementary	Secondary	Federal	Total
100 Personnel Services – Salaries				
100 Personnel Services – Salaries	160,916.46	107,457.05		268,373.51
Total Personnel Services – Salaries	\$160,916.46	\$107,457.05		\$268,373.51
200 Personnel Services – Employee Benefits				
210 Group Insurance – Contracted Provider	5.04	2.76		7.80
220 Social Security Contributions	11,942.49	7,827.67		19,770.16
230 PSERS Retirement Contributions	56,154.50	37,541.53		93,696.03
250 Unemployment Compensation	38.44	29.11		67.55
260 Workers' Compensation	868.92	580.15		1,449.07
270 Group Insurance – Self-Insurance	23,337.18	1,714.47		25,051.65
Total Personnel Services – Employee Benefits	\$92,346.57	\$47,695.69		\$140,042.26
300 Purchased Professional and Technical Services				
330 Other Professional Services	195.00	84,634.18		84,829.18
Total Purchased Professional and Technical Services	\$195.00	\$84,634.18		\$84,829.18
500 Other Purchased Services				
510 Student Transportation Services	370.00	1,626.85		1,996.85
Total Other Purchased Services	\$370.00	\$1,626.85		\$1,996.85
600 Supplies				
610 General Supplies	6,313.87	3,734.29		10,048.16
640 Books and Periodicals	59.29			59.29
650 Supplies & Fees – Technology Related		3,571.00		3,571.00
Total Supplies	\$6,373.16	\$7,305.29		\$13,678.45
700 Property				
762 Capitalized Equipment - Replacement		3,581.25		3,581.25
Total Property		\$3,581.25		\$3,581.25
Total 1270 Multi-Handicapped Support	\$260,201.19	\$252,300.31		\$512,501.50

LEA : 123467103 Souderton Area SD

Printed 11/30/2022 3:20:16 PM

General Fund (10)

1280 Early Intervention Support

	<u>Elementary</u>	<u>Secondary</u>	<u>Federal</u>	<u>Total</u>
300 <u>Purchased Professional and Technical Services</u>				
322 Professional Educational Services – lus	142,128.59			142,128.59
Total Purchased Professional and Technical Services	\$142,128.59			\$142,128.59
Total 1280 Early Intervention Support	\$142,128.59			\$142,128.59

LEA : 123467103 Souderton Area SD

Printed 11/30/2022 3:20:16 PM

General Fund (10)

1290 Special Programs - Other Support	Elementary	Secondary	Federal	Total
100 Personnel Services – Salaries				
100 Personnel Services – Salaries	350,022.31	318,885.92		668,908.23
Total Personnel Services – Salaries	\$350,022.31	\$318,885.92		\$668,908.23
200 Personnel Services – Employee Benefits				
210 Group Insurance – Contracted Provider	1,282.06	1,908.19		3,190.25
220 Social Security Contributions	25,826.08	23,374.90		49,200.98
230 PSERS Retirement Contributions	120,918.11	110,274.77		231,192.88
250 Unemployment Compensation	5.01	24.97		29.98
260 Workers' Compensation	1,279.12	1,142.62		2,421.74
270 Group Insurance – Self-Insurance	77,907.76	39,040.41		116,948.17
291 Other Retirement Plans	2,400.00	7,600.00		10,000.00
Total Personnel Services – Employee Benefits	\$229,618.14	\$183,365.86		\$412,984.00
300 Purchased Professional and Technical Services				
322 Professional Educational Services – Ius	529,244.48	955,096.27	157,700.00	1,642,040.75
323 Professional Educational Services – Other Educational Agencies		103,647.03		103,647.03
329 Professional Educational Services – Other	3,700.00	18,975.00		22,675.00
330 Other Professional Services	113,270.63	302,829.75	3,332.00	419,432.38
Total Purchased Professional and Technical Services	\$646,215.11	\$1,380,548.05	\$161,032.00	\$2,187,795.16
500 Other Purchased Services				
510 Student Transportation Services	46,100.37	17,958.58		64,058.95
530 Communications		4,109.85		4,109.85
550 Printing and Binding		1,168.85		1,168.85
561 Tuition To Other School Districts Within the State		225.00		225.00
562 Tuition To Pennsylvania Charter Schools	956,580.10	574,338.66		1,530,918.76
563 Tuition To Nonpublic Schools	727,146.82	1,463,150.93		2,190,297.75
564 Tuition To Career and Technology Centers		12,300.00		12,300.00
566 Tuition To Institutions of Higher Education and Technical Institutes		3,000.00		3,000.00
567 Tuition To Approved Private Schools (APS) and PA Chartered Schools for the Deaf and Blind	144,620.00	181,607.94		326,227.94
568 Tuition To Private Residential Rehabilitative Institutions (PRRI) [In-State] and Detention Centers	51,004.47	1,298,018.89		1,349,023.36
569 Tuition – Other	9,580.00	139,793.00		149,373.00
580 Travel	1,180.82	582.90		1,763.72
594 IU Payment By Withholding for Institutionalized Children’s Programs – Special Classes	2,312.19			2,312.19
599 Other Miscellaneous Purchased Services	672.00	3,951.86		4,623.86
Total Other Purchased Services	\$1,939,196.77	\$3,700,206.46		\$5,639,403.23
600 Supplies				
610 General Supplies	5,823.18	4,265.79	93,791.28	103,880.25
630 Food		161.35		161.35
650 Supplies & Fees – Technology Related	1,690.13	3,557.13		5,247.26
Total Supplies	\$7,513.31	\$7,984.27	\$93,791.28	\$109,288.86
800 Other Objects				
810 Dues and Fees		146.00		146.00
820 Claims and Judgments Against the LEA	9,000.00	11,120.00		20,120.00

LEA : 123467103 Souderton Area SD

Printed 11/30/2022 3:20:16 PM

General Fund (10)

1290 Special Programs - Other Support	<u>Elementary</u>	<u>Secondary</u>	<u>Federal</u>	<u>Total</u>
800 <u>Other Objects</u>				
890 Miscellaneous Expenditures		150.00		150.00
Total Other Objects	\$9,000.00	\$11,416.00		\$20,416.00
Total 1290 Special Programs - Other Support	\$3,181,565.64	\$5,602,406.56	\$254,823.28	\$9,038,795.48

LEA : 123467103 Souderton Area SD

Printed 11/30/2022 3:20:16 PM

General Fund (10)

1300 Vocational Education

500 Other Purchased Services

	<u>Elementary</u>	<u>Secondary</u>	<u>Federal</u>	<u>Total</u>
564 Tuition To Career and Technology Centers		1,746,643.98		1,746,643.98
Total Other Purchased Services		\$1,746,643.98		\$1,746,643.98
Total 1300 Vocational Education		\$1,746,643.98		\$1,746,643.98

LEA : 123467103 Souderton Area SD

Printed 11/30/2022 3:20:16 PM

General Fund (10)				
1400 Other Instructional Programs – Elementary / Secondary	<u>Elementary</u>	<u>Secondary</u>	<u>Federal</u>	<u>Total</u>
100 <u>Personnel Services – Salaries</u>				
100 Personnel Services – Salaries	172,000.77	50,767.35		222,768.12
Total Personnel Services – Salaries	\$172,000.77	\$50,767.35		\$222,768.12
200 <u>Personnel Services – Employee Benefits</u>				
210 Group Insurance – Contracted Provider		173.56		173.56
220 Social Security Contributions	13,030.17	3,598.76		16,628.93
230 PSERS Retirement Contributions	36,959.85	8,604.18		45,564.03
250 Unemployment Compensation	126.61	41.12		167.73
260 Workers' Compensation	907.42	273.00		1,180.42
291 Other Retirement Plans	1,800.00			1,800.00
Total Personnel Services – Employee Benefits	\$52,824.05	\$12,690.62		\$65,514.67
300 <u>Purchased Professional and Technical Services</u>				
322 Professional Educational Services – Ius		7,515.00		7,515.00
323 Professional Educational Services – Other Educational Agencies	15,822.50	293,084.60		308,907.10
390 Other Purchased Professional and Technical Services	19,975.00	164.00		20,139.00
Total Purchased Professional and Technical Services	\$35,797.50	\$300,763.60		\$336,561.10
400 <u>Purchased Property Services</u>				
440 Rentals	415.00			415.00
Total Purchased Property Services	\$415.00			\$415.00
500 <u>Other Purchased Services</u>				
510 Student Transportation Services	4,290.00			4,290.00
550 Printing and Binding	470.00			470.00
561 Tuition To Other School Districts Within the State		45,786.69		45,786.69
580 Travel	294.65			294.65
599 Other Miscellaneous Purchased Services	5,855.73			5,855.73
Total Other Purchased Services	\$10,910.38	\$45,786.69		\$56,697.07
600 <u>Supplies</u>				
610 General Supplies	3,262.80	452.86		3,715.66
630 Food	7,213.33			7,213.33
Total Supplies	\$10,476.13	\$452.86		\$10,928.99
800 <u>Other Objects</u>				
810 Dues and Fees	7,808.32	1,987.03		9,795.35
Total Other Objects	\$7,808.32	\$1,987.03		\$9,795.35
Total 1400 Other Instructional Programs – Elementary / Secondary	\$290,232.15	\$412,448.15		\$702,680.30

LEA : 123467103 Souderton Area SD

Printed 11/30/2022 3:20:16 PM

General Fund (10)

1430 Homebound Instruction	<u>Elementary</u>	<u>Secondary</u>	<u>Federal</u>	<u>Total</u>
100 <u>Personnel Services – Salaries</u>				
100 Personnel Services – Salaries	2,132.00	11,808.00		13,940.00
Total Personnel Services – Salaries	\$2,132.00	\$11,808.00		\$13,940.00
200 <u>Personnel Services – Employee Benefits</u>				
220 Social Security Contributions	163.21	895.53		1,058.74
230 PSERS Retirement Contributions	744.92	4,125.66		4,870.58
250 Unemployment Compensation		7.60		7.60
260 Workers' Compensation	11.52	63.26		74.78
Total Personnel Services – Employee Benefits	\$919.65	\$5,092.05		\$6,011.70
300 <u>Purchased Professional and Technical Services</u>				
323 Professional Educational Services – Other Educational Agencies	15,822.50	293,084.60		308,907.10
Total Purchased Professional and Technical Services	\$15,822.50	\$293,084.60		\$308,907.10
Total 1430 Homebound Instruction	\$18,874.15	\$309,984.65		\$328,858.80

LEA : 123467103 Souderton Area SD

Printed 11/30/2022 3:20:16 PM

General Fund (10)

1440 Alternative Regular Education Programs	<u>Elementary</u>	<u>Secondary</u>	<u>Federal</u>	<u>Total</u>
300 <u>Purchased Professional and Technical Services</u>				
322 Professional Educational Services – lus		7,515.00		7,515.00
Total Purchased Professional and Technical Services		\$7,515.00		\$7,515.00
500 <u>Other Purchased Services</u>				
561 Tuition To Other School Districts Within the State		45,786.69		45,786.69
Total Other Purchased Services		\$45,786.69		\$45,786.69
Total 1440 Alternative Regular Education Programs		\$53,301.69		\$53,301.69

LEA : 123467103 Souderton Area SD

Printed 11/30/2022 3:20:16 PM

General Fund (10)

1441 Adjudicated / Court-Placed Programs	<u>Elementary</u>	<u>Secondary</u>	<u>Federal</u>	<u>Total</u>
300 <u>Purchased Professional and Technical Services</u>				
322 Professional Educational Services – lus		7,515.00		7,515.00
Total Purchased Professional and Technical Services		\$7,515.00		\$7,515.00
500 <u>Other Purchased Services</u>				
561 Tuition To Other School Districts Within the State		45,786.69		45,786.69
Total Other Purchased Services		\$45,786.69		\$45,786.69
Total 1441 Adjudicated / Court-Placed Programs		\$53,301.69		\$53,301.69

LEA : 123467103 Souderton Area SD

Printed 11/30/2022 3:20:16 PM

General Fund (10)

1490 Additional Other Instructional Programs	Elementary	Secondary	Federal	Total
100 <u>Personnel Services – Salaries</u>				
100 Personnel Services – Salaries	169,868.77	38,959.35		208,828.12
Total Personnel Services – Salaries	\$169,868.77	\$38,959.35		\$208,828.12
200 <u>Personnel Services – Employee Benefits</u>				
210 Group Insurance – Contracted Provider		173.56		173.56
220 Social Security Contributions	12,866.96	2,703.23		15,570.19
230 PSERS Retirement Contributions	36,214.93	4,478.52		40,693.45
250 Unemployment Compensation	126.61	33.52		160.13
260 Workers' Compensation	895.90	209.74		1,105.64
291 Other Retirement Plans	1,800.00			1,800.00
Total Personnel Services – Employee Benefits	\$51,904.40	\$7,598.57		\$59,502.97
300 <u>Purchased Professional and Technical Services</u>				
390 Other Purchased Professional and Technical Services	19,975.00	164.00		20,139.00
Total Purchased Professional and Technical Services	\$19,975.00	\$164.00		\$20,139.00
400 <u>Purchased Property Services</u>				
440 Rentals	415.00			415.00
Total Purchased Property Services	\$415.00			\$415.00
500 <u>Other Purchased Services</u>				
510 Student Transportation Services	4,290.00			4,290.00
550 Printing and Binding	470.00			470.00
580 Travel	294.65			294.65
599 Other Miscellaneous Purchased Services	5,855.73			5,855.73
Total Other Purchased Services	\$10,910.38			\$10,910.38
600 <u>Supplies</u>				
610 General Supplies	3,262.80	452.86		3,715.66
630 Food	7,213.33			7,213.33
Total Supplies	\$10,476.13	\$452.86		\$10,928.99
800 <u>Other Objects</u>				
810 Dues and Fees	7,808.32	1,987.03		9,795.35
Total Other Objects	\$7,808.32	\$1,987.03		\$9,795.35
Total 1490 Additional Other Instructional Programs	\$271,358.00	\$49,161.81		\$320,519.81

LEA : 123467103 Souderton Area SD

Printed 11/30/2022 3:20:16 PM

General Fund (10)

1500 Nonpublic School Programs

Elementary Secondary Federal Total

300 Purchased Professional and Technical Services

322 Professional Educational Services – lus 954.00 954.00

330 Other Professional Services 2,862.00 2,862.00

Total Purchased Professional and Technical Services \$3,816.00 \$3,816.00

600 Supplies

610 General Supplies 1,423.93 1,423.93

Total Supplies \$1,423.93 \$1,423.93

Total 1500 Nonpublic School Programs \$5,239.93 \$5,239.93

LEA : 123467103 Souderton Area SD

Printed 11/30/2022 3:20:16 PM

General Fund (10)

1600 Adult Education Programs	Elementary	Secondary	Federal	Total
100 <u>Personnel Services – Salaries</u>				
100 Personnel Services – Salaries				67,836.74
Total Personnel Services – Salaries				\$67,836.74
200 <u>Personnel Services – Employee Benefits</u>				
210 Group Insurance – Contracted Provider				319.61
220 Social Security Contributions				5,058.44
230 PSERS Retirement Contributions				19,589.97
240 Tuition Reimbursement				12.39
250 Unemployment Compensation				205.37
291 Other Retirement Plans				1,800.00
Total Personnel Services – Employee Benefits				\$26,985.78
300 <u>Purchased Professional and Technical Services</u>				
330 Other Professional Services				17,171.00
Total Purchased Professional and Technical Services				\$17,171.00
500 <u>Other Purchased Services</u>				
550 Printing and Binding				13,088.63
599 Other Miscellaneous Purchased Services				3,716.93
Total Other Purchased Services				\$16,805.56
600 <u>Supplies</u>				
610 General Supplies				687.88
Total Supplies				\$687.88
800 <u>Other Objects</u>				
810 Dues and Fees				2,754.82
Total Other Objects				\$2,754.82
Total 1600 Adult Education Programs				\$132,241.78

LEA : 123467103 Souderton Area SD

Printed 11/30/2022 3:20:22 PM

General Fund (10)

2000 Support Services

Total

100	<u>Personnel Services – Salaries</u>	
100	Personnel Services – Salaries	14,441,953.80
Total Personnel Services – Salaries		\$14,441,953.80
200	<u>Personnel Services – Employee Benefits</u>	
210	Group Insurance – Contracted Provider	50,596.11
220	Social Security Contributions	1,050,658.14
230	PSERS Retirement Contributions	4,913,658.06
240	Tuition Reimbursement	237,746.35
250	Unemployment Compensation	507.87
260	Workers' Compensation	43,909.70
270	Group Insurance – Self-Insurance	2,456,558.59
291	Other Retirement Plans	125,140.05
Total Personnel Services – Employee Benefits		\$8,878,774.87
300	<u>Purchased Professional and Technical Services</u>	
322	Professional Educational Services – Ius	275,047.30
329	Professional Educational Services – Other	9,027.10
330	Other Professional Services	1,453,886.52
340	Technical Services	69,321.56
350	Security / Safety Services	40,973.73
360	Employee Training and Development Services	19,971.05
390	Other Purchased Professional and Technical Services	5,236.28
Total Purchased Professional and Technical Services		\$1,873,463.54
400	<u>Purchased Property Services</u>	
410	Cleaning Services	80,017.57
420	Utility Services	171,271.53
430	Repairs and Maintenance Services	795,638.11
440	Rentals	282,309.03
450	Construction Services	1,595.00
460	Extermination Services	5,534.60
Total Purchased Property Services		\$1,336,365.84
500	<u>Other Purchased Services</u>	
511	Student Transportation Services from Another LEA Within the State	13,870.08
513	Contracted Carriers	7,856,159.86
516	Student Transportation Services From the IU	250,109.80
519	Student Transportation Services From Other Sources	22,189.50
520	Insurance – General	94,108.00
529	Other Insurance	282,108.00
530	Communications	554,497.29
549	Other Advertising/Public Relations	8,518.77
550	Printing and Binding	34,368.55
580	Travel	14,115.14
595	IU Payments By Withholding	81,177.11
599	Other Miscellaneous Purchased Services	176.68
Total Other Purchased Services		\$9,211,398.78

LEA : 123467103 Souderton Area SD

Printed 11/30/2022 3:20:22 PM

General Fund (10)

2000 Support Services

Total

600	<u>Supplies</u>	
610	General Supplies	85,446.45
620	Energy	1,233,258.45
630	Food	11,974.11
640	Books and Periodicals	40,430.71
650	Supplies & Fees – Technology Related	1,321,286.25
Total Supplies		\$2,692,395.97
700	<u>Property</u>	
752	Capital Equipment – Original and Additional	764,988.50
756	Capitalized Technology Equipment – Original	368,670.03
762	Capitalized Equipment - Replacement	31,390.87
Total Property		\$1,165,049.40
800	<u>Other Objects</u>	
810	Dues and Fees	71,093.75
890	Miscellaneous Expenditures	63,670.00
Total Other Objects		\$134,763.75
Total 2000 Support Services		\$39,734,165.95

LEA : 123467103 Souderton Area SD

Printed 11/30/2022 3:20:22 PM

General Fund (10)

2100 Support Services – Students	Elementary	Secondary	Federal	Total
100 Personnel Services – Salaries				
100 Personnel Services – Salaries	750,164.38	1,248,918.76	425,040.36	2,832,186.12
Total Personnel Services – Salaries	\$750,164.38	\$1,248,918.76	\$425,040.36	\$2,832,186.12
200 Personnel Services – Employee Benefits				
210 Group Insurance – Contracted Provider	2,081.74	2,982.84		5,929.00
220 Social Security Contributions	64,882.93	96,261.44	15,516.75	206,745.83
230 PSERS Retirement Contributions	315,621.84	457,797.17	70,387.07	983,234.61
250 Unemployment Compensation	20.09	9.00		74.53
260 Workers' Compensation	3,945.51	4,659.59		9,861.94
270 Group Insurance – Self-Insurance	137,566.92	183,684.47		413,681.06
291 Other Retirement Plans	3,450.00	3,450.00		6,900.00
Total Personnel Services – Employee Benefits	\$527,569.03	\$748,844.51	\$85,903.82	\$1,626,426.97
300 Purchased Professional and Technical Services				
322 Professional Educational Services – Ius		254,574.87		254,574.87
330 Other Professional Services	10,700.00	19,738.75		542,207.76
Total Purchased Professional and Technical Services	\$10,700.00	\$274,313.62		\$796,782.63
500 Other Purchased Services				
530 Communications	116.00			116.00
549 Other Advertising/Public Relations				3,114.00
550 Printing and Binding	1,882.00	1,882.00		3,764.00
580 Travel	273.38	253.38		644.12
Total Other Purchased Services	\$2,271.38	\$2,135.38		\$7,638.12
600 Supplies				
610 General Supplies	5,180.31	15,737.34		20,932.59
630 Food		459.35		459.35
640 Books and Periodicals	697.35	24.95		722.30
650 Supplies & Fees – Technology Related		11,373.24		98,326.22
Total Supplies	\$5,877.66	\$27,594.88		\$120,440.46
800 Other Objects				
810 Dues and Fees	265.00	265.00		530.00
890 Miscellaneous Expenditures		63,670.00		63,670.00
Total Other Objects	\$265.00	\$63,935.00		\$64,200.00
Total 2100 Support Services – Students	\$1,296,847.45	\$2,365,742.15	\$510,944.18	\$5,447,674.30

LEA : 123467103 Souderton Area SD

Printed 11/30/2022 3:20:22 PM

General Fund (10)

2110 Supervision of Student Services	Elementary	Secondary	Federal	Total
100 <u>Personnel Services – Salaries</u>				
100 Personnel Services – Salaries	110,425.59	110,425.58		220,851.17
Total Personnel Services – Salaries	\$110,425.59	\$110,425.58		\$220,851.17
200 <u>Personnel Services – Employee Benefits</u>				
210 Group Insurance – Contracted Provider	698.20	698.20		1,396.40
220 Social Security Contributions	7,837.90	7,837.90		15,675.80
230 PSERS Retirement Contributions	36,991.32	36,991.32		73,982.64
260 Workers' Compensation	338.87	338.86		677.73
270 Group Insurance – Self-Insurance	19,038.65	19,038.65		38,077.30
291 Other Retirement Plans	3,450.00	3,450.00		6,900.00
Total Personnel Services – Employee Benefits	\$68,354.94	\$68,354.93		\$136,709.87
500 <u>Other Purchased Services</u>				
550 Printing and Binding	1,882.00	1,882.00		3,764.00
580 Travel	177.10	177.10		354.20
Total Other Purchased Services	\$2,059.10	\$2,059.10		\$4,118.20
600 <u>Supplies</u>				
610 General Supplies	599.47	599.46		1,198.93
Total Supplies	\$599.47	\$599.46		\$1,198.93
800 <u>Other Objects</u>				
810 Dues and Fees	265.00	265.00		530.00
Total Other Objects	\$265.00	\$265.00		\$530.00
Total 2110 Supervision of Student Services	\$181,704.10	\$181,704.07		\$363,408.17

LEA : 123467103 Souderton Area SD

Printed 11/30/2022 3:20:22 PM

General Fund (10)

2111 Supervision of Student Services – Head of Component	<u>Elementary</u>	<u>Secondary</u>	<u>Federal</u>	<u>Total</u>
100 <u>Personnel Services – Salaries</u>				
100 Personnel Services – Salaries	110,425.59	110,425.58		220,851.17
Total Personnel Services – Salaries	\$110,425.59	\$110,425.58		\$220,851.17
200 <u>Personnel Services – Employee Benefits</u>				
210 Group Insurance – Contracted Provider	698.20	698.20		1,396.40
220 Social Security Contributions	7,837.90	7,837.90		15,675.80
230 PSERS Retirement Contributions	36,991.32	36,991.32		73,982.64
260 Workers' Compensation	338.87	338.86		677.73
270 Group Insurance – Self-Insurance	19,038.65	19,038.65		38,077.30
291 Other Retirement Plans	3,450.00	3,450.00		6,900.00
Total Personnel Services – Employee Benefits	\$68,354.94	\$68,354.93		\$136,709.87
500 <u>Other Purchased Services</u>				
550 Printing and Binding	1,882.00	1,882.00		3,764.00
580 Travel	177.10	177.10		354.20
Total Other Purchased Services	\$2,059.10	\$2,059.10		\$4,118.20
600 <u>Supplies</u>				
610 General Supplies	599.47	599.46		1,198.93
Total Supplies	\$599.47	\$599.46		\$1,198.93
800 <u>Other Objects</u>				
810 Dues and Fees	265.00	265.00		530.00
Total Other Objects	\$265.00	\$265.00		\$530.00
Total 2111 Supervision of Student Services – Head of Component	\$181,704.10	\$181,704.07		\$363,408.17

LEA : 123467103 Souderton Area SD

Printed 11/30/2022 3:20:22 PM

General Fund (10)

2120 Guidance Services	Elementary	Secondary	Federal	Total
100 Personnel Services – Salaries				
100 Personnel Services – Salaries	472,633.79	1,049,470.98		1,522,104.77
Total Personnel Services – Salaries	\$472,633.79	\$1,049,470.98		\$1,522,104.77
200 Personnel Services – Employee Benefits				
210 Group Insurance – Contracted Provider	1,016.50	2,099.09		3,115.59
220 Social Security Contributions	33,755.61	77,192.80		110,948.41
230 PSERS Retirement Contributions	165,138.10	366,685.45		531,823.55
260 Workers' Compensation	1,457.90	3,381.46		4,839.36
270 Group Insurance – Self-Insurance	73,684.47	141,977.23		215,661.70
Total Personnel Services – Employee Benefits	\$275,052.58	\$591,336.03		\$866,388.61
600 Supplies				
610 General Supplies	486.76	58.38		545.14
630 Food		459.35		459.35
640 Books and Periodicals	593.03	24.95		617.98
650 Supplies & Fees – Technology Related		11,373.24		11,373.24
Total Supplies	\$1,079.79	\$11,915.92		\$12,995.71
800 Other Objects				
890 Miscellaneous Expenditures		63,670.00		63,670.00
Total Other Objects		\$63,670.00		\$63,670.00
Total 2120 Guidance Services	\$748,766.16	\$1,716,392.93		\$2,465,159.09

LEA : 123467103 Souderton Area SD

Printed 11/30/2022 3:20:22 PM

General Fund (10)

2130 Attendance Services

	<u>Elementary</u>	<u>Secondary</u>	<u>Federal</u>	<u>Total</u>
100 <u>Personnel Services – Salaries</u>				
100 Personnel Services – Salaries				408,062.62
Total Personnel Services – Salaries				\$408,062.62
200 <u>Personnel Services – Employee Benefits</u>				
210 Group Insurance – Contracted Provider				864.42
220 Social Security Contributions				30,084.71
230 PSERS Retirement Contributions				139,428.53
250 Unemployment Compensation				45.44
260 Workers' Compensation				1,256.84
270 Group Insurance – Self-Insurance				92,429.67
Total Personnel Services – Employee Benefits				\$264,109.61
500 <u>Other Purchased Services</u>				
549 Other Advertising/Public Relations				3,114.00
580 Travel				117.36
Total Other Purchased Services				\$3,231.36
600 <u>Supplies</u>				
610 General Supplies				14.94
Total Supplies				\$14.94
Total 2130 Attendance Services				\$675,418.53

LEA : 123467103 Souderton Area SD

Printed 11/30/2022 3:20:22 PM

General Fund (10)

2140 Psychological Services	Elementary	Secondary	Federal	Total
100 Personnel Services – Salaries				
100 Personnel Services – Salaries	167,105.00	89,022.20	425,040.36	681,167.56
Total Personnel Services – Salaries	\$167,105.00	\$89,022.20	\$425,040.36	\$681,167.56
200 Personnel Services – Employee Benefits				
210 Group Insurance – Contracted Provider	367.04	185.55		552.59
220 Social Security Contributions	23,289.42	11,230.74	15,516.75	50,036.91
230 PSERS Retirement Contributions	113,492.42	54,120.40	70,387.07	237,999.89
250 Unemployment Compensation	20.09	9.00		29.09
260 Workers' Compensation	2,148.74	939.27		3,088.01
270 Group Insurance – Self-Insurance	44,843.80	22,668.59		67,512.39
Total Personnel Services – Employee Benefits	\$184,161.51	\$89,153.55	\$85,903.82	\$359,218.88
300 Purchased Professional and Technical Services				
322 Professional Educational Services – Ius		254,574.87		254,574.87
330 Other Professional Services	10,700.00	19,738.75		30,438.75
Total Purchased Professional and Technical Services	\$10,700.00	\$274,313.62		\$285,013.62
500 Other Purchased Services				
530 Communications	116.00			116.00
580 Travel	96.28	76.28		172.56
Total Other Purchased Services	\$212.28	\$76.28		\$288.56
600 Supplies				
610 General Supplies	4,094.08	15,079.50		19,173.58
640 Books and Periodicals	104.32			104.32
Total Supplies	\$4,198.40	\$15,079.50		\$19,277.90
Total 2140 Psychological Services	\$366,377.19	\$467,645.15	\$510,944.18	\$1,344,966.52

LEA : 123467103 Souderton Area SD

Printed 11/30/2022 3:20:22 PM

General Fund (10)

2160 Social Work Services

Elementary Secondary Federal Total

300 <u>Purchased Professional and Technical Services</u>				
330 Other Professional Services				511,769.01
Total Purchased Professional and Technical Services				\$511,769.01
Total 2160 Social Work Services				\$511,769.01

LEA : 123467103 Souderton Area SD

Printed 11/30/2022 3:20:22 PM

General Fund (10)

2170 Student Accounting Services

<u>Elementary</u>	<u>Secondary</u>	<u>Federal</u>	<u>Total</u>
-------------------	------------------	----------------	--------------

600 <u>Supplies</u>				
650 Supplies & Fees – Technology Related				86,952.98

Total Supplies				\$86,952.98
----------------	--	--	--	-------------

Total 2170 Student Accounting Services				\$86,952.98
--	--	--	--	-------------

LEA : 123467103 Souderton Area SD

Printed 11/30/2022 3:20:22 PM

General Fund (10)

2200 Support Services – Instructional Staff

	Elementary	Secondary	Federal	Total
100 Personnel Services – Salaries				
100 Personnel Services – Salaries	1,178,941.79	1,136,181.00	89,043.00	2,404,165.79
Total Personnel Services – Salaries	\$1,178,941.79	\$1,136,181.00	\$89,043.00	\$2,404,165.79
200 Personnel Services – Employee Benefits				
210 Group Insurance – Contracted Provider	3,761.19	3,838.19	2.10	7,601.48
220 Social Security Contributions	86,463.14	82,917.84	6,917.80	176,298.78
230 PSERS Retirement Contributions	417,828.01	395,183.71	30,829.24	843,840.96
240 Tuition Reimbursement	111,558.87	114,801.48		226,360.35
250 Unemployment Compensation	0.62	0.20		0.82
260 Workers' Compensation	4,221.56	4,162.56	196.86	8,580.98
270 Group Insurance – Self-Insurance	173,425.62	170,436.33		343,861.95
291 Other Retirement Plans	11,725.07	8,075.06		19,800.13
Total Personnel Services – Employee Benefits	\$808,984.08	\$779,415.37	\$37,946.00	\$1,626,345.45
300 Purchased Professional and Technical Services				
329 Professional Educational Services – Other		195.00	1,278.60	1,473.60
330 Other Professional Services	38,441.30	3,947.10		42,388.40
360 Employee Training and Development Services	9,760.05	8,192.00		17,952.05
390 Other Purchased Professional and Technical Services	2,770.06	2,307.22		5,077.28
Total Purchased Professional and Technical Services	\$50,971.41	\$14,641.32	\$1,278.60	\$66,891.33
400 Purchased Property Services				
430 Repairs and Maintenance Services	9,597.96	48,580.05		58,178.01
Total Purchased Property Services	\$9,597.96	\$48,580.05		\$58,178.01
500 Other Purchased Services				
530 Communications	500.00			500.00
550 Printing and Binding	321.38	893.41		1,214.79
580 Travel	2,890.84	3,252.95		6,143.79
Total Other Purchased Services	\$3,712.22	\$4,146.36		\$7,858.58
600 Supplies				
610 General Supplies	4,674.96	71,148.27	10,360.96	86,184.19
630 Food	219.50	77.00		296.50
640 Books and Periodicals	27,541.04	7,803.37		35,344.41
650 Supplies & Fees – Technology Related	199,284.97	170,825.14		370,110.11
Total Supplies	\$231,720.47	\$249,853.78	\$10,360.96	\$491,935.21
800 Other Objects				
810 Dues and Fees	624.50	482.50		1,107.00
Total Other Objects	\$624.50	\$482.50		\$1,107.00
Total 2200 Support Services – Instructional Staff	\$2,284,552.43	\$2,233,300.38	\$138,628.56	\$4,656,481.37

LEA : 123467103 Souderton Area SD

Printed 11/30/2022 3:20:22 PM

General Fund (10)

2210 Supervision of Educational Media Services	Elementary	Secondary	Federal	Total
100 <u>Personnel Services – Salaries</u>				
100 Personnel Services – Salaries	42,971.27	42,971.27		85,942.54
Total Personnel Services – Salaries	\$42,971.27	\$42,971.27		\$85,942.54
200 <u>Personnel Services – Employee Benefits</u>				
210 Group Insurance – Contracted Provider	353.80	353.80		707.60
220 Social Security Contributions	3,138.69	3,138.68		6,277.37
230 PSERS Retirement Contributions	14,622.03	14,622.03		29,244.06
260 Workers' Compensation	130.09	130.09		260.18
270 Group Insurance – Self-Insurance	9,361.32	9,361.31		18,722.63
291 Other Retirement Plans	1,900.00	1,900.00		3,800.00
Total Personnel Services – Employee Benefits	\$29,505.93	\$29,505.91		\$59,011.84
300 <u>Purchased Professional and Technical Services</u>				
330 Other Professional Services		1,590.00		1,590.00
Total Purchased Professional and Technical Services		\$1,590.00		\$1,590.00
600 <u>Supplies</u>				
610 General Supplies		12,520.08		12,520.08
630 Food		77.00		77.00
Total Supplies		\$12,597.08		\$12,597.08
Total 2210 Supervision of Educational Media Services	\$72,477.20	\$86,664.26		\$159,141.46

LEA : 123467103 Souderton Area SD

Printed 11/30/2022 3:20:22 PM

General Fund (10)

2211 Supervision of Educational Media Services – Head of Component	<u>Elementary</u>	<u>Secondary</u>	<u>Federal</u>	<u>Total</u>
100 <u>Personnel Services – Salaries</u>				
100 Personnel Services – Salaries	42,971.27	42,971.27		85,942.54
Total Personnel Services – Salaries	\$42,971.27	\$42,971.27		\$85,942.54
200 <u>Personnel Services – Employee Benefits</u>				
210 Group Insurance – Contracted Provider	353.80	353.80		707.60
220 Social Security Contributions	3,138.69	3,138.68		6,277.37
230 PSERS Retirement Contributions	14,622.03	14,622.03		29,244.06
260 Workers' Compensation	130.09	130.09		260.18
270 Group Insurance – Self-Insurance	9,361.32	9,361.31		18,722.63
291 Other Retirement Plans	1,900.00	1,900.00		3,800.00
Total Personnel Services – Employee Benefits	\$29,505.93	\$29,505.91		\$59,011.84
300 <u>Purchased Professional and Technical Services</u>				
330 Other Professional Services		1,590.00		1,590.00
Total Purchased Professional and Technical Services		\$1,590.00		\$1,590.00
600 <u>Supplies</u>				
610 General Supplies		12,520.08		12,520.08
630 Food		77.00		77.00
Total Supplies		\$12,597.08		\$12,597.08
Total 2211 Supervision of Educational Media Services – Head of Component	\$72,477.20	\$86,664.26		\$159,141.46

LEA : 123467103 Souderton Area SD

Printed 11/30/2022 3:20:22 PM

General Fund (10)

2220 Technology Support Services	Elementary	Secondary	Federal	Total
100 Personnel Services – Salaries				
100 Personnel Services – Salaries	285,004.66	283,405.95		568,410.61
Total Personnel Services – Salaries	\$285,004.66	\$283,405.95		\$568,410.61
200 Personnel Services – Employee Benefits				
210 Group Insurance – Contracted Provider	595.71	906.42		1,502.13
220 Social Security Contributions	21,131.65	20,844.00		41,975.65
230 PSERS Retirement Contributions	98,816.92	98,245.63		197,062.55
260 Workers' Compensation	872.87	889.91		1,762.78
270 Group Insurance – Self-Insurance	13,366.39	56,348.47		69,714.86
291 Other Retirement Plans	3,900.00	300.00		4,200.00
Total Personnel Services – Employee Benefits	\$138,683.54	\$177,534.43		\$316,217.97
300 Purchased Professional and Technical Services				
390 Other Purchased Professional and Technical Services	299.56	299.56		599.12
Total Purchased Professional and Technical Services	\$299.56	\$299.56		\$599.12
400 Purchased Property Services				
430 Repairs and Maintenance Services	1,431.20	39,958.69		41,389.89
Total Purchased Property Services	\$1,431.20	\$39,958.69		\$41,389.89
500 Other Purchased Services				
580 Travel	1,176.44	701.50		1,877.94
Total Other Purchased Services	\$1,176.44	\$701.50		\$1,877.94
600 Supplies				
610 General Supplies	57.45	55,191.98		55,249.43
650 Supplies & Fees – Technology Related	13,384.23			13,384.23
Total Supplies	\$13,441.68	\$55,191.98		\$68,633.66
Total 2220 Technology Support Services	\$440,037.08	\$557,092.11		\$997,129.19

LEA : 123467103 Souderton Area SD

Printed 11/30/2022 3:20:22 PM

General Fund (10)

2240 Computer-Assisted Instruction Support Services

	<u>Elementary</u>	<u>Secondary</u>	<u>Federal</u>	<u>Total</u>
600 <u>Supplies</u>				
610 General Supplies	1,050.00	1,561.77		2,611.77
Total Supplies	\$1,050.00	\$1,561.77		\$2,611.77
Total 2240 Computer-Assisted Instruction Support Services	\$1,050.00	\$1,561.77		\$2,611.77

LEA : 123467103 Souderton Area SD

Printed 11/30/2022 3:20:22 PM

General Fund (10)

2250 School Library Services	Elementary	Secondary	Federal	Total
100 Personnel Services – Salaries				
100 Personnel Services – Salaries	444,132.65	239,816.00		683,948.65
Total Personnel Services – Salaries	\$444,132.65	\$239,816.00		\$683,948.65
200 Personnel Services – Employee Benefits				
210 Group Insurance – Contracted Provider	958.21	517.26		1,475.47
220 Social Security Contributions	32,479.70	17,401.38		49,881.08
230 PSERS Retirement Contributions	166,403.95	83,791.69		250,195.64
260 Workers' Compensation	1,367.93	736.99		2,104.92
270 Group Insurance – Self-Insurance	97,168.91	47,970.69		145,139.60
Total Personnel Services – Employee Benefits	\$298,378.70	\$150,418.01		\$448,796.71
600 Supplies				
610 General Supplies	1,137.00	657.27		1,794.27
640 Books and Periodicals	24,568.15	5,953.26		30,521.41
650 Supplies & Fees – Technology Related	34,151.18	94,256.91		128,408.09
Total Supplies	\$59,856.33	\$100,867.44		\$160,723.77
Total 2250 School Library Services	\$802,367.68	\$491,101.45		\$1,293,469.13

LEA : 123467103 Souderton Area SD

Printed 11/30/2022 3:20:22 PM

General Fund (10)

2260 Instruction and Curriculum Development Services	Elementary	Secondary	Federal	Total
100 <u>Personnel Services – Salaries</u>				
100 Personnel Services – Salaries	299,804.71	310,357.78		610,162.49
Total Personnel Services – Salaries	\$299,804.71	\$310,357.78		\$610,162.49
200 <u>Personnel Services – Employee Benefits</u>				
210 Group Insurance – Contracted Provider	1,632.93	1,662.28		3,295.21
220 Social Security Contributions	21,805.76	22,609.38		44,415.14
230 PSERS Retirement Contributions	100,773.07	107,812.07		208,585.14
260 Workers' Compensation	935.95	960.68		1,896.63
270 Group Insurance – Self-Insurance	33,233.79	33,539.07		66,772.86
291 Other Retirement Plans	5,925.07	5,875.06		11,800.13
Total Personnel Services – Employee Benefits	\$164,306.57	\$172,458.54		\$336,765.11
300 <u>Purchased Professional and Technical Services</u>				
330 Other Professional Services	501.30	2,357.10		2,858.40
390 Other Purchased Professional and Technical Services	2,470.50	2,007.66		4,478.16
Total Purchased Professional and Technical Services	\$2,971.80	\$4,364.76		\$7,336.56
400 <u>Purchased Property Services</u>				
430 Repairs and Maintenance Services	8,166.76	8,621.36		16,788.12
Total Purchased Property Services	\$8,166.76	\$8,621.36		\$16,788.12
500 <u>Other Purchased Services</u>				
530 Communications	500.00			500.00
550 Printing and Binding	321.38	893.41		1,214.79
580 Travel	1,215.98	2,512.25		3,728.23
Total Other Purchased Services	\$2,037.36	\$3,405.66		\$5,443.02
600 <u>Supplies</u>				
610 General Supplies	2,430.51	1,217.17		3,647.68
630 Food	219.50			219.50
640 Books and Periodicals	2,972.89	1,850.11		4,823.00
650 Supplies & Fees – Technology Related	136,517.17	70,835.85		207,353.02
Total Supplies	\$142,140.07	\$73,903.13		\$216,043.20
800 <u>Other Objects</u>				
810 Dues and Fees	624.50	482.50		1,107.00
Total Other Objects	\$624.50	\$482.50		\$1,107.00
Total 2260 Instruction and Curriculum Development Services	\$620,051.77	\$573,593.73		\$1,193,645.50

LEA : 123467103 Souderton Area SD

Printed 11/30/2022 3:20:22 PM

General Fund (10)

2270 Instructional Staff Professional Development Services	Elementary	Secondary	Federal	Total
100 Personnel Services – Salaries				
100 Personnel Services – Salaries	107,028.50	259,630.00	89,043.00	455,701.50
Total Personnel Services – Salaries	\$107,028.50	\$259,630.00	\$89,043.00	\$455,701.50
200 Personnel Services – Employee Benefits				
210 Group Insurance – Contracted Provider	220.54	398.43	2.10	621.07
220 Social Security Contributions	7,907.34	18,924.40	6,917.80	33,749.54
230 PSERS Retirement Contributions	37,212.04	90,712.29	30,829.24	158,753.57
240 Tuition Reimbursement	111,558.87	114,801.48		226,360.35
250 Unemployment Compensation	0.62	0.20		0.82
260 Workers' Compensation	914.72	1,444.89	196.86	2,556.47
270 Group Insurance – Self-Insurance	20,295.21	23,216.79		43,512.00
Total Personnel Services – Employee Benefits	\$178,109.34	\$249,498.48	\$37,946.00	\$465,553.82
300 Purchased Professional and Technical Services				
329 Professional Educational Services – Other		195.00	1,278.60	1,473.60
330 Other Professional Services	37,940.00			37,940.00
360 Employee Training and Development Services	9,760.05	8,192.00		17,952.05
Total Purchased Professional and Technical Services	\$47,700.05	\$8,387.00	\$1,278.60	\$57,365.65
500 Other Purchased Services				
580 Travel	498.42	39.20		537.62
Total Other Purchased Services	\$498.42	\$39.20		\$537.62
600 Supplies				
610 General Supplies			10,360.96	10,360.96
650 Supplies & Fees – Technology Related	15,232.39	5,732.38		20,964.77
Total Supplies	\$15,232.39	\$5,732.38	\$10,360.96	\$31,325.73
Total 2270 Instructional Staff Professional Development Services	\$348,568.70	\$523,287.06	\$138,628.56	\$1,010,484.32

LEA : 123467103 Souderton Area SD

Printed 11/30/2022 3:20:22 PM

General Fund (10)

2300 Support Services – Administration	Elementary	Secondary	Federal	Total
100 Personnel Services – Salaries				
100 Personnel Services – Salaries	1,149,530.93	1,547,424.29		3,070,888.27
Total Personnel Services – Salaries	\$1,149,530.93	\$1,547,424.29		\$3,070,888.27
200 Personnel Services – Employee Benefits				
210 Group Insurance – Contracted Provider	6,093.77	8,878.74		16,503.44
220 Social Security Contributions	82,941.61	113,032.27		219,954.78
230 PSERS Retirement Contributions	387,224.36	532,886.59		1,013,671.85
250 Unemployment Compensation	0.20			0.20
260 Workers' Compensation	3,533.95	4,773.13		9,175.31
270 Group Insurance – Self-Insurance	198,583.68	247,357.31		477,799.98
291 Other Retirement Plans	9,881.00	22,964.40		46,295.40
Total Personnel Services – Employee Benefits	\$688,258.57	\$929,892.44		\$1,783,400.96
300 Purchased Professional and Technical Services				
329 Professional Educational Services – Other		4,500.00		4,500.00
330 Other Professional Services		1,300.00		319,103.82
390 Other Purchased Professional and Technical Services				159.00
Total Purchased Professional and Technical Services		\$5,800.00		\$323,762.82
400 Purchased Property Services				
430 Repairs and Maintenance Services	357.00	2,146.65		2,503.65
440 Rentals	23,182.54	22,126.34		45,308.88
Total Purchased Property Services	\$23,539.54	\$24,272.99		\$47,812.53
500 Other Purchased Services				
520 Insurance – General				94,108.00
530 Communications	13,491.19	17,292.45		69,559.89
549 Other Advertising/Public Relations				4,644.82
550 Printing and Binding	15,672.50	13,445.71		29,322.61
580 Travel	266.31	3,406.22		4,122.53
599 Other Miscellaneous Purchased Services		176.68		176.68
Total Other Purchased Services	\$29,430.00	\$34,321.06		\$201,934.53
600 Supplies				
610 General Supplies	10,847.95	11,257.13		50,465.36
630 Food	243.75	4,457.41		9,795.80
640 Books and Periodicals	1,462.34	1,479.48		3,167.00
650 Supplies & Fees – Technology Related	39.00			9,114.00
Total Supplies	\$12,593.04	\$17,194.02		\$72,542.16
800 Other Objects				
810 Dues and Fees	5,355.00	4,035.00		38,613.88
Total Other Objects	\$5,355.00	\$4,035.00		\$38,613.88
Total 2300 Support Services – Administration	\$1,908,707.08	\$2,562,939.80		\$5,538,955.15

LEA : 123467103 Souderton Area SD

Printed 11/30/2022 3:20:22 PM

General Fund (10)				
2310 Board Services	<u>Elementary</u>	<u>Secondary</u>	<u>Federal</u>	<u>Total</u>
300 <u>Purchased Professional and Technical Services</u>				
330 Other Professional Services				26,280.74
Total Purchased Professional and Technical Services				\$26,280.74
500 <u>Other Purchased Services</u>				
520 Insurance – General				78,474.00
549 Other Advertising/Public Relations				3,894.82
Total Other Purchased Services				\$82,368.82
600 <u>Supplies</u>				
610 General Supplies				4,996.43
630 Food				70.30
650 Supplies & Fees – Technology Related				9,000.00
Total Supplies				\$14,066.73
800 <u>Other Objects</u>				
810 Dues and Fees				15,840.42
Total Other Objects				\$15,840.42
Total 2310 Board Services				\$138,556.71

LEA : 123467103 Souderton Area SD

Printed 11/30/2022 3:20:22 PM

General Fund (10)				
2330 Tax Assessment and Collection Services	<u>Elementary</u>	<u>Secondary</u>	<u>Federal</u>	<u>Total</u>
100 <u>Personnel Services – Salaries</u>				
100 Personnel Services – Salaries				93,986.80
Total Personnel Services – Salaries				\$93,986.80
200 <u>Personnel Services – Employee Benefits</u>				
220 Social Security Contributions				7,189.86
Total Personnel Services – Employee Benefits				\$7,189.86
300 <u>Purchased Professional and Technical Services</u>				
330 Other Professional Services				148,294.22
Total Purchased Professional and Technical Services				\$148,294.22
500 <u>Other Purchased Services</u>				
520 Insurance – General				15,634.00
530 Communications				36,001.98
Total Other Purchased Services				\$51,635.98
600 <u>Supplies</u>				
610 General Supplies				1,715.00
650 Supplies & Fees – Technology Related				75.00
Total Supplies				\$1,790.00
800 <u>Other Objects</u>				
810 Dues and Fees				2,395.00
Total Other Objects				\$2,395.00
Total 2330 Tax Assessment and Collection Services				\$305,291.86

LEA : 123467103 Souderton Area SD

Printed 11/30/2022 3:20:22 PM

General Fund (10)

2350 Legal and Accounting Services	<u>Elementary</u>	<u>Secondary</u>	<u>Federal</u>	<u>Total</u>
300 <u>Purchased Professional and Technical Services</u>				
330 Other Professional Services				133,553.86
Total Purchased Professional and Technical Services				\$133,553.86
Total 2350 Legal and Accounting Services				\$133,553.86

LEA : 123467103 Souderton Area SD

Printed 11/30/2022 3:20:22 PM

General Fund (10)

2360 Office of the Superintendent / Executive Director Services	Elementary	Secondary	Federal	Total
100 <u>Personnel Services – Salaries</u>				
100 Personnel Services – Salaries				279,946.25
Total Personnel Services – Salaries				\$279,946.25
200 <u>Personnel Services – Employee Benefits</u>				
210 Group Insurance – Contracted Provider				1,530.93
220 Social Security Contributions				16,791.04
230 PSERS Retirement Contributions				93,560.90
260 Workers' Compensation				868.23
270 Group Insurance – Self-Insurance				31,858.99
291 Other Retirement Plans				13,450.00
Total Personnel Services – Employee Benefits				\$158,060.09
300 <u>Purchased Professional and Technical Services</u>				
330 Other Professional Services				9,675.00
390 Other Purchased Professional and Technical Services				159.00
Total Purchased Professional and Technical Services				\$9,834.00
500 <u>Other Purchased Services</u>				
530 Communications	12,007.71	12,007.70		24,015.41
549 Other Advertising/Public Relations				750.00
550 Printing and Binding				204.40
580 Travel				450.00
Total Other Purchased Services	\$12,007.71	\$12,007.70		\$25,419.81
600 <u>Supplies</u>				
610 General Supplies				1,360.16
630 Food				5,024.34
640 Books and Periodicals				225.18
Total Supplies				\$6,609.68
800 <u>Other Objects</u>				
810 Dues and Fees				10,988.46
Total Other Objects				\$10,988.46
Total 2360 Office of the Superintendent / Executive Director Services	\$12,007.71	\$12,007.70		\$490,858.29

LEA : 123467103 Souderton Area SD

Printed 11/30/2022 3:20:22 PM

General Fund (10)

2370 Community Relations Services	<u>Elementary</u>	<u>Secondary</u>	<u>Federal</u>	<u>Total</u>
500 <u>Other Purchased Services</u>				
530 Communications				2,774.27
Total Other Purchased Services				\$2,774.27
600 <u>Supplies</u>				
610 General Supplies				234.00
Total Supplies				\$234.00
Total 2370 Community Relations Services				\$3,008.27

LEA : 123467103 Souderton Area SD

Printed 11/30/2022 3:20:22 PM

General Fund (10)

2380 Office of the Principal Services	Elementary	Secondary	Federal	Total
100 <u>Personnel Services – Salaries</u>				
100 Personnel Services – Salaries	1,149,530.93	1,547,424.29		2,696,955.22
Total Personnel Services – Salaries	\$1,149,530.93	\$1,547,424.29		\$2,696,955.22
200 <u>Personnel Services – Employee Benefits</u>				
210 Group Insurance – Contracted Provider	6,093.77	8,878.74		14,972.51
220 Social Security Contributions	82,941.61	113,032.27		195,973.88
230 PSERS Retirement Contributions	387,224.36	532,886.59		920,110.95
250 Unemployment Compensation	0.20			0.20
260 Workers' Compensation	3,533.95	4,773.13		8,307.08
270 Group Insurance – Self-Insurance	198,583.68	247,357.31		445,940.99
291 Other Retirement Plans	9,881.00	22,964.40		32,845.40
Total Personnel Services – Employee Benefits	\$688,258.57	\$929,892.44		\$1,618,151.01
300 <u>Purchased Professional and Technical Services</u>				
329 Professional Educational Services – Other		4,500.00		4,500.00
330 Other Professional Services		1,300.00		1,300.00
Total Purchased Professional and Technical Services		\$5,800.00		\$5,800.00
400 <u>Purchased Property Services</u>				
430 Repairs and Maintenance Services	357.00	2,146.65		2,503.65
440 Rentals	23,182.54	22,126.34		45,308.88
Total Purchased Property Services	\$23,539.54	\$24,272.99		\$47,812.53
500 <u>Other Purchased Services</u>				
530 Communications	1,483.48	5,284.75		6,768.23
550 Printing and Binding	15,672.50	13,445.71		29,118.21
580 Travel	266.31	3,406.22		3,672.53
599 Other Miscellaneous Purchased Services		176.68		176.68
Total Other Purchased Services	\$17,422.29	\$22,313.36		\$39,735.65
600 <u>Supplies</u>				
610 General Supplies	10,847.95	11,257.13		22,105.08
630 Food	243.75	4,457.41		4,701.16
640 Books and Periodicals	1,462.34	1,479.48		2,941.82
650 Supplies & Fees – Technology Related	39.00			39.00
Total Supplies	\$12,593.04	\$17,194.02		\$29,787.06
800 <u>Other Objects</u>				
810 Dues and Fees	5,355.00	4,035.00		9,390.00
Total Other Objects	\$5,355.00	\$4,035.00		\$9,390.00
Total 2380 Office of the Principal Services	\$1,896,699.37	\$2,550,932.10		\$4,447,631.47

LEA : 123467103 Souderton Area SD

Printed 11/30/2022 3:20:22 PM

General Fund (10)

2390 Other Administration Services	<u>Elementary</u>	<u>Secondary</u>	<u>Federal</u>	<u>Total</u>
600 <u>Supplies</u>				
610 General Supplies				20,054.69
Total Supplies				\$20,054.69
Total 2390 Other Administration Services				\$20,054.69

LEA : 123467103 Souderton Area SD

Printed 11/30/2022 3:20:22 PM

General Fund (10)

2400 Support Services – Pupil Health	<u>Elementary</u>	<u>Secondary</u>	<u>Federal</u>	<u>Total</u>
100 <u>Personnel Services – Salaries</u>				
100 Personnel Services – Salaries				797,491.02
Total Personnel Services – Salaries				\$797,491.02
200 <u>Personnel Services – Employee Benefits</u>				
210 Group Insurance – Contracted Provider				22.56
220 Social Security Contributions				58,928.54
230 PSERS Retirement Contributions				275,259.22
250 Unemployment Compensation				180.69
260 Workers' Compensation				4,305.69
270 Group Insurance – Self-Insurance				130,620.90
Total Personnel Services – Employee Benefits				\$469,317.60
300 <u>Purchased Professional and Technical Services</u>				
322 Professional Educational Services – Ius				20,472.43
330 Other Professional Services				281,356.89
Total Purchased Professional and Technical Services				\$301,829.32
400 <u>Purchased Property Services</u>				
410 Cleaning Services				318.00
430 Repairs and Maintenance Services				695.00
Total Purchased Property Services				\$1,013.00
500 <u>Other Purchased Services</u>				
580 Travel				25.33
Total Other Purchased Services				\$25.33
600 <u>Supplies</u>				
610 General Supplies				16,853.85
640 Books and Periodicals				197.00
650 Supplies & Fees – Technology Related				4,500.00
Total Supplies				\$21,550.85
Total 2400 Support Services – Pupil Health				\$1,591,227.12

LEA : 123467103 Souderton Area SD

Printed 11/30/2022 3:20:22 PM

General Fund (10)

2420 Medical Services

Elementary Secondary Federal Total

300 Purchased Professional and Technical Services

322 Professional Educational Services – lus 20,472.43

330 Other Professional Services 278,368.84

Total Purchased Professional and Technical Services				\$298,841.27
Total 2420 Medical Services				\$298,841.27

LEA : 123467103 Souderton Area SD

Printed 11/30/2022 3:20:22 PM

General Fund (10)

2440 Nursing Services

	<u>Elementary</u>	<u>Secondary</u>	<u>Federal</u>	<u>Total</u>
100 <u>Personnel Services – Salaries</u>				
100 Personnel Services – Salaries				791,935.86
Total Personnel Services – Salaries				\$791,935.86
200 <u>Personnel Services – Employee Benefits</u>				
210 Group Insurance – Contracted Provider				22.44
220 Social Security Contributions				58,517.93
230 PSERS Retirement Contributions				273,318.13
250 Unemployment Compensation				177.64
260 Workers' Compensation				4,275.62
270 Group Insurance – Self-Insurance				128,647.38
Total Personnel Services – Employee Benefits				\$464,959.14
300 <u>Purchased Professional and Technical Services</u>				
330 Other Professional Services				2,988.05
Total Purchased Professional and Technical Services				\$2,988.05
400 <u>Purchased Property Services</u>				
410 Cleaning Services				318.00
430 Repairs and Maintenance Services				695.00
Total Purchased Property Services				\$1,013.00
500 <u>Other Purchased Services</u>				
580 Travel				25.33
Total Other Purchased Services				\$25.33
600 <u>Supplies</u>				
610 General Supplies				16,853.85
640 Books and Periodicals				197.00
650 Supplies & Fees – Technology Related				4,500.00
Total Supplies				\$21,550.85
Total 2440 Nursing Services				\$1,282,472.23

LEA : 123467103 Souderton Area SD

Printed 11/30/2022 3:20:22 PM

General Fund (10)

2450 Nonpublic Health Services	<u>Elementary</u>	<u>Secondary</u>	<u>Federal</u>	<u>Total</u>
100 <u>Personnel Services – Salaries</u>				
100 Personnel Services – Salaries				5,555.16
Total Personnel Services – Salaries				\$5,555.16
200 <u>Personnel Services – Employee Benefits</u>				
210 Group Insurance – Contracted Provider				0.12
220 Social Security Contributions				410.61
230 PSERS Retirement Contributions				1,941.09
250 Unemployment Compensation				3.05
260 Workers' Compensation				30.07
270 Group Insurance – Self-Insurance				1,973.52
Total Personnel Services – Employee Benefits				\$4,358.46
Total 2450 Nonpublic Health Services				\$9,913.62

LEA : 123467103 Souderton Area SD

Printed 11/30/2022 3:20:22 PM

General Fund (10)

2500 Support Services – Business	Elementary	Secondary	Federal	Total
100 <u>Personnel Services – Salaries</u>				
100 Personnel Services – Salaries				530,199.89
Total Personnel Services – Salaries				\$530,199.89
200 <u>Personnel Services – Employee Benefits</u>				
210 Group Insurance – Contracted Provider				2,444.48
220 Social Security Contributions				38,933.05
230 PSERS Retirement Contributions				173,734.01
250 Unemployment Compensation				11.16
260 Workers' Compensation				1,651.37
270 Group Insurance – Self-Insurance				105,928.30
291 Other Retirement Plans				23,474.54
Total Personnel Services – Employee Benefits				\$346,176.91
300 <u>Purchased Professional and Technical Services</u>				
330 Other Professional Services				9,555.80
Total Purchased Professional and Technical Services				\$9,555.80
400 <u>Purchased Property Services</u>				
410 Cleaning Services				1,591.00
430 Repairs and Maintenance Services				1,029.00
440 Rentals				91,678.61
Total Purchased Property Services				\$94,298.61
500 <u>Other Purchased Services</u>				
530 Communications				12,045.33
549 Other Advertising/Public Relations				159.95
580 Travel				1,987.74
Total Other Purchased Services				\$14,193.02
600 <u>Supplies</u>				
610 General Supplies				18,288.28
630 Food				1,422.46
650 Supplies & Fees – Technology Related				13,381.15
Total Supplies				\$33,091.89
800 <u>Other Objects</u>				
810 Dues and Fees				18,001.08
Total Other Objects				\$18,001.08
Total 2500 Support Services – Business				\$1,045,517.20

LEA : 123467103 Souderton Area SD

Printed 11/30/2022 3:20:22 PM

General Fund (10)

2510 Fiscal Services

	<u>Elementary</u>	<u>Secondary</u>	<u>Federal</u>	<u>Total</u>
100 <u>Personnel Services – Salaries</u>				
100 Personnel Services – Salaries				423,422.01
Total Personnel Services – Salaries				\$423,422.01
200 <u>Personnel Services – Employee Benefits</u>				
210 Group Insurance – Contracted Provider				2,219.87
220 Social Security Contributions				31,098.28
230 PSERS Retirement Contributions				140,115.43
260 Workers' Compensation				1,321.39
270 Group Insurance – Self-Insurance				74,456.26
291 Other Retirement Plans				23,474.54
Total Personnel Services – Employee Benefits				\$272,685.77
300 <u>Purchased Professional and Technical Services</u>				
330 Other Professional Services				9,555.80
Total Purchased Professional and Technical Services				\$9,555.80
400 <u>Purchased Property Services</u>				
410 Cleaning Services				1,591.00
440 Rentals				91,678.61
Total Purchased Property Services				\$93,269.61
500 <u>Other Purchased Services</u>				
530 Communications				12,045.33
549 Other Advertising/Public Relations				159.95
580 Travel				1,987.74
Total Other Purchased Services				\$14,193.02
600 <u>Supplies</u>				
610 General Supplies				16,035.86
630 Food				1,422.46
650 Supplies & Fees – Technology Related				13,381.15
Total Supplies				\$30,839.47
800 <u>Other Objects</u>				
810 Dues and Fees				18,001.08
Total Other Objects				\$18,001.08
Total 2510 Fiscal Services				\$861,966.76

LEA : 123467103 Souderton Area SD

Printed 11/30/2022 3:20:22 PM

General Fund (10)

2511 Supervision of Fiscal Services - Head of Component

Elementary Secondary Federal Total

100 <u>Personnel Services – Salaries</u>				
100 Personnel Services – Salaries				233,978.95
Total Personnel Services – Salaries				\$233,978.95
200 <u>Personnel Services – Employee Benefits</u>				
210 Group Insurance – Contracted Provider				1,311.76
220 Social Security Contributions				16,708.59
230 PSERS Retirement Contributions				74,893.71
260 Workers' Compensation				727.04
270 Group Insurance – Self-Insurance				29,646.85
291 Other Retirement Plans				18,174.54
Total Personnel Services – Employee Benefits				\$141,462.49
300 <u>Purchased Professional and Technical Services</u>				
330 Other Professional Services				9,555.80
Total Purchased Professional and Technical Services				\$9,555.80
400 <u>Purchased Property Services</u>				
410 Cleaning Services				1,591.00
440 Rentals				91,678.61
Total Purchased Property Services				\$93,269.61
500 <u>Other Purchased Services</u>				
530 Communications				12,045.33
549 Other Advertising/Public Relations				159.95
580 Travel				1,987.74
Total Other Purchased Services				\$14,193.02
600 <u>Supplies</u>				
610 General Supplies				16,035.86
630 Food				1,422.46
650 Supplies & Fees – Technology Related				13,381.15
Total Supplies				\$30,839.47
800 <u>Other Objects</u>				
810 Dues and Fees				2,928.67
Total Other Objects				\$2,928.67
Total 2511 Supervision of Fiscal Services - Head of Component				\$526,228.01

LEA : 123467103 Souderton Area SD

Printed 11/30/2022 3:20:22 PM

General Fund (10)

2513 Receiving and Disbursing Funds Services	<u>Elementary</u>	<u>Secondary</u>	<u>Federal</u>	<u>Total</u>
100 <u>Personnel Services – Salaries</u>				
100 Personnel Services – Salaries				25,229.90
Total Personnel Services – Salaries				\$25,229.90
200 <u>Personnel Services – Employee Benefits</u>				
210 Group Insurance – Contracted Provider				48.83
220 Social Security Contributions				1,788.69
230 PSERS Retirement Contributions				8,815.38
260 Workers' Compensation				82.71
270 Group Insurance – Self-Insurance				6,626.76
Total Personnel Services – Employee Benefits				\$17,362.37
Total 2513 Receiving and Disbursing Funds Services				\$42,592.27

LEA : 123467103 Souderton Area SD

Printed 11/30/2022 3:20:22 PM

General Fund (10)

2514 Payroll Services

	<u>Elementary</u>	<u>Secondary</u>	<u>Federal</u>	<u>Total</u>
100 <u>Personnel Services – Salaries</u>				
100 Personnel Services – Salaries				57,944.50
Total Personnel Services – Salaries				\$57,944.50
200 <u>Personnel Services – Employee Benefits</u>				
210 Group Insurance – Contracted Provider				117.19
220 Social Security Contributions				4,437.13
230 PSERS Retirement Contributions				20,245.81
260 Workers' Compensation				184.63
270 Group Insurance – Self-Insurance				19,521.28
291 Other Retirement Plans				1,500.00
Total Personnel Services – Employee Benefits				\$46,006.04
Total 2514 Payroll Services				\$103,950.54

LEA : 123467103 Souderton Area SD

Printed 11/30/2022 3:20:22 PM

General Fund (10)

2515 Financial Accounting Services	<u>Elementary</u>	<u>Secondary</u>	<u>Federal</u>	<u>Total</u>
100 <u>Personnel Services – Salaries</u>				
100 Personnel Services – Salaries				106,268.66
Total Personnel Services – Salaries				\$106,268.66
200 <u>Personnel Services – Employee Benefits</u>				
210 Group Insurance – Contracted Provider				742.09
220 Social Security Contributions				8,163.87
230 PSERS Retirement Contributions				36,160.53
260 Workers' Compensation				327.01
270 Group Insurance – Self-Insurance				18,661.37
291 Other Retirement Plans				3,800.00
Total Personnel Services – Employee Benefits				\$67,854.87
Total 2515 Financial Accounting Services				\$174,123.53

LEA : 123467103 Souderton Area SD

Printed 11/30/2022 3:20:22 PM

General Fund (10)				
2519 Other Fiscal Services	<u>Elementary</u>	<u>Secondary</u>	<u>Federal</u>	<u>Total</u>
800 <u>Other Objects</u>				
810 Dues and Fees				15,072.41
Total Other Objects				\$15,072.41
Total 2519 Other Fiscal Services				\$15,072.41

LEA : 123467103 Souderton Area SD

Printed 11/30/2022 3:20:22 PM

General Fund (10)

2520 Purchasing Services

Elementary Secondary Federal Total

100 <u>Personnel Services – Salaries</u>				
100 Personnel Services – Salaries				50,720.34
Total Personnel Services – Salaries				\$50,720.34
200 <u>Personnel Services – Employee Benefits</u>				
210 Group Insurance – Contracted Provider				107.42
220 Social Security Contributions				3,611.86
230 PSERS Retirement Contributions				16,180.24
260 Workers' Compensation				155.90
270 Group Insurance – Self-Insurance				15,526.95
Total Personnel Services – Employee Benefits				\$35,582.37
Total 2520 Purchasing Services				\$86,302.71

LEA : 123467103 Souderton Area SD

Printed 11/30/2022 3:20:22 PM

General Fund (10)

2540 Printing, Publishing and Duplicating Services	<u>Elementary</u>	<u>Secondary</u>	<u>Federal</u>	<u>Total</u>
100 <u>Personnel Services – Salaries</u>				
100 Personnel Services – Salaries				56,057.54
Total Personnel Services – Salaries				\$56,057.54
200 <u>Personnel Services – Employee Benefits</u>				
210 Group Insurance – Contracted Provider				117.19
220 Social Security Contributions				4,222.91
230 PSERS Retirement Contributions				17,438.34
250 Unemployment Compensation				11.16
260 Workers' Compensation				174.08
270 Group Insurance – Self-Insurance				15,945.09
Total Personnel Services – Employee Benefits				\$37,908.77
400 <u>Purchased Property Services</u>				
430 Repairs and Maintenance Services				1,029.00
Total Purchased Property Services				\$1,029.00
600 <u>Supplies</u>				
610 General Supplies				2,252.42
Total Supplies				\$2,252.42
Total 2540 Printing, Publishing and Duplicating Services				\$97,247.73

LEA : 123467103 Souderton Area SD

Printed 11/30/2022 3:20:22 PM

General Fund (10)

2600 Operation and Maintenance of Plant Services

Elementary Secondary Federal Total

100 <u>Personnel Services – Salaries</u>				
100 Personnel Services – Salaries				3,918,785.97
Total Personnel Services – Salaries				\$3,918,785.97
200 <u>Personnel Services – Employee Benefits</u>				
210 Group Insurance – Contracted Provider				13,309.24
220 Social Security Contributions				286,821.60
230 PSERS Retirement Contributions				1,323,678.40
250 Unemployment Compensation				202.49
260 Workers' Compensation				7,101.74
270 Group Insurance – Self-Insurance				841,855.02
291 Other Retirement Plans				5,164.34
Total Personnel Services – Employee Benefits				\$2,478,132.83
300 <u>Purchased Professional and Technical Services</u>				
330 Other Professional Services				183,140.00
350 Security / Safety Services				40,973.73
Total Purchased Professional and Technical Services				\$224,113.73
400 <u>Purchased Property Services</u>				
410 Cleaning Services				78,108.57
420 Utility Services				171,271.53
430 Repairs and Maintenance Services				716,233.30
440 Rentals				38,161.71
450 Construction Services				1,595.00
460 Extermination Services				5,534.60
Total Purchased Property Services				\$1,010,904.71
500 <u>Other Purchased Services</u>				
529 Other Insurance				282,108.00
530 Communications				151,719.78
580 Travel				654.13
Total Other Purchased Services				\$434,481.91
600 <u>Supplies</u>				
610 General Supplies	216,748.26	246,509.03	11,869.99	475,127.28
620 Energy				1,233,258.45
640 Books and Periodicals				1,000.00
650 Supplies & Fees – Technology Related				24,480.00
Total Supplies	\$216,748.26	\$246,509.03	\$11,869.99	\$1,733,865.73
700 <u>Property</u>				
752 Capital Equipment – Original and Additional			59,442.80	96,988.50
762 Capitalized Equipment - Replacement				31,390.87
Total Property			\$59,442.80	\$128,379.37
800 <u>Other Objects</u>				
810 Dues and Fees				1,012.59

LEA : 123467103 Souderton Area SD

Printed 11/30/2022 3:20:22 PM

General Fund (10)

2600 Operation and Maintenance of Plant Services

	<u>Elementary</u>	<u>Secondary</u>	<u>Federal</u>	<u>Total</u>
Total Other Objects				\$1,012.59
Total 2600 Operation and Maintenance of Plant Services	\$216,748.26	\$246,509.03	\$71,312.79	\$9,929,676.84

LEA : 123467103 Souderton Area SD

Printed 11/30/2022 3:20:22 PM

General Fund (10)

2610 Supervision of Operation and Maintenance of Plant Services	<u>Elementary</u>	<u>Secondary</u>	<u>Federal</u>	<u>Total</u>
100 <u>Personnel Services – Salaries</u>				
100 Personnel Services – Salaries				160,803.32
Total Personnel Services – Salaries				\$160,803.32
200 <u>Personnel Services – Employee Benefits</u>				
210 Group Insurance – Contracted Provider				916.60
220 Social Security Contributions				11,920.26
230 PSERS Retirement Contributions				49,783.42
260 Workers' Compensation				492.84
270 Group Insurance – Self-Insurance				52,613.19
291 Other Retirement Plans				3,800.00
Total Personnel Services – Employee Benefits				\$119,526.31
400 <u>Purchased Property Services</u>				
440 Rentals				1,164.50
Total Purchased Property Services				\$1,164.50
500 <u>Other Purchased Services</u>				
580 Travel				654.13
Total Other Purchased Services				\$654.13
600 <u>Supplies</u>				
610 General Supplies	675.00	2,690.21		3,365.21
Total Supplies	\$675.00	\$2,690.21		\$3,365.21
800 <u>Other Objects</u>				
810 Dues and Fees				495.75
Total Other Objects				\$495.75
Total 2610 Supervision of Operation and Maintenance of Plant Services	\$675.00	\$2,690.21		\$286,009.22

LEA : 123467103 Souderton Area SD

Printed 11/30/2022 3:20:22 PM

General Fund (10)				
2611 Supervision of Operation and Maintenance of Plant Services – Head of Component	<u>Elementary</u>	<u>Secondary</u>	<u>Federal</u>	<u>Total</u>
100 <u>Personnel Services – Salaries</u>				
100 Personnel Services – Salaries				160,803.32
Total Personnel Services – Salaries				\$160,803.32
200 <u>Personnel Services – Employee Benefits</u>				
210 Group Insurance – Contracted Provider				916.60
220 Social Security Contributions				11,920.26
230 PSERS Retirement Contributions				49,783.42
260 Workers' Compensation				492.84
270 Group Insurance – Self-Insurance				52,613.19
291 Other Retirement Plans				3,800.00
Total Personnel Services – Employee Benefits				\$119,526.31
400 <u>Purchased Property Services</u>				
440 Rentals				1,164.50
Total Purchased Property Services				\$1,164.50
500 <u>Other Purchased Services</u>				
580 Travel				654.13
Total Other Purchased Services				\$654.13
600 <u>Supplies</u>				
610 General Supplies	675.00	2,690.21		3,365.21
Total Supplies	\$675.00	\$2,690.21		\$3,365.21
800 <u>Other Objects</u>				
810 Dues and Fees				495.75
Total Other Objects				\$495.75
Total 2611 Supervision of Operation and Maintenance of Plant Services – Head of Component	\$675.00	\$2,690.21		\$286,009.22

LEA : 123467103 Souderton Area SD

Printed 11/30/2022 3:20:22 PM

General Fund (10)

2620 Operation of Buildings Services	Elementary	Secondary	Federal	Total
100 <u>Personnel Services – Salaries</u>				
100 Personnel Services – Salaries				3,299,059.18
Total Personnel Services – Salaries				\$3,299,059.18
200 <u>Personnel Services – Employee Benefits</u>				
210 Group Insurance – Contracted Provider				12,168.03
220 Social Security Contributions				240,788.45
230 PSERS Retirement Contributions				1,115,087.15
250 Unemployment Compensation				116.77
260 Workers' Compensation				5,372.43
270 Group Insurance – Self-Insurance				739,873.78
Total Personnel Services – Employee Benefits				\$2,113,406.61
300 <u>Purchased Professional and Technical Services</u>				
330 Other Professional Services				7,140.00
Total Purchased Professional and Technical Services				\$7,140.00
400 <u>Purchased Property Services</u>				
430 Repairs and Maintenance Services				509,550.29
440 Rentals				36,169.21
Total Purchased Property Services				\$545,719.50
600 <u>Supplies</u>				
610 General Supplies	200,738.87	227,967.65	11,869.99	440,576.51
Total Supplies	\$200,738.87	\$227,967.65	\$11,869.99	\$440,576.51
700 <u>Property</u>				
752 Capital Equipment – Original and Additional			59,442.80	59,442.80
Total Property			\$59,442.80	\$59,442.80
Total 2620 Operation of Buildings Services	\$200,738.87	\$227,967.65	\$71,312.79	\$6,465,344.60

LEA : 123467103 Souderton Area SD

Printed 11/30/2022 3:20:22 PM

General Fund (10)

2630 Care and Upkeep of Grounds Services	<u>Elementary</u>	<u>Secondary</u>	<u>Federal</u>	<u>Total</u>
100 <u>Personnel Services – Salaries</u>				
100 Personnel Services – Salaries				116,769.24
Total Personnel Services – Salaries				\$116,769.24
200 <u>Personnel Services – Employee Benefits</u>				
210 Group Insurance – Contracted Provider				224.61
220 Social Security Contributions				8,559.92
230 PSERS Retirement Contributions				39,923.34
260 Workers' Compensation				382.46
270 Group Insurance – Self-Insurance				27,507.79
Total Personnel Services – Employee Benefits				\$76,598.12
400 <u>Purchased Property Services</u>				
410 Cleaning Services				8,450.00
430 Repairs and Maintenance Services				150,954.24
450 Construction Services				1,595.00
Total Purchased Property Services				\$160,999.24
600 <u>Supplies</u>				
610 General Supplies	7,298.74	7,334.89		14,633.63
Total Supplies	\$7,298.74	\$7,334.89		\$14,633.63
700 <u>Property</u>				
752 Capital Equipment – Original and Additional				31,583.70
762 Capitalized Equipment - Replacement				31,390.87
Total Property				\$62,974.57
Total 2630 Care and Upkeep of Grounds Services	\$7,298.74	\$7,334.89		\$431,974.80

LEA : 123467103 Souderton Area SD

Printed 11/30/2022 3:20:22 PM

General Fund (10)				
2650 Vehicle Operation and Maintenance Services (Other Than Student Transportation Vehicles)	<u>Elementary</u>	<u>Secondary</u>	<u>Federal</u>	<u>Total</u>
400 <u>Purchased Property Services</u>				
430 Repairs and Maintenance Services				28,816.78
Total Purchased Property Services				\$28,816.78
500 <u>Other Purchased Services</u>				
529 Other Insurance				23,758.00
Total Other Purchased Services				\$23,758.00
600 <u>Supplies</u>				
610 General Supplies	4,547.27	214.40		4,761.67
620 Energy				5,925.92
Total Supplies	\$4,547.27	\$214.40		\$10,687.59
700 <u>Property</u>				
752 Capital Equipment – Original and Additional				5,962.00
Total Property				\$5,962.00
Total 2650 Vehicle Operation and Maintenance Services (Other Than Student Transportation Vehicles)	\$4,547.27	\$214.40		\$69,224.37

LEA : 123467103 Souderton Area SD

Printed 11/30/2022 3:20:22 PM

General Fund (10)

2660 Safety and Security Services	Elementary	Secondary	Federal	Total
100 <u>Personnel Services – Salaries</u>				
100 Personnel Services – Salaries				342,154.23
Total Personnel Services – Salaries				\$342,154.23
200 <u>Personnel Services – Employee Benefits</u>				
220 Social Security Contributions				25,552.97
230 PSERS Retirement Contributions				118,884.49
250 Unemployment Compensation				85.72
260 Workers' Compensation				854.01
270 Group Insurance – Self-Insurance				21,860.26
291 Other Retirement Plans				1,364.34
Total Personnel Services – Employee Benefits				\$168,601.79
300 <u>Purchased Professional and Technical Services</u>				
330 Other Professional Services				176,000.00
350 Security / Safety Services				40,973.73
Total Purchased Professional and Technical Services				\$216,973.73
400 <u>Purchased Property Services</u>				
430 Repairs and Maintenance Services				26,911.99
Total Purchased Property Services				\$26,911.99
600 <u>Supplies</u>				
610 General Supplies	3,488.38	3,902.38		7,390.76
640 Books and Periodicals				1,000.00
650 Supplies & Fees – Technology Related				24,480.00
Total Supplies	\$3,488.38	\$3,902.38		\$32,870.76
800 <u>Other Objects</u>				
810 Dues and Fees				240.00
Total Other Objects				\$240.00
Total 2660 Safety and Security Services	\$3,488.38	\$3,902.38		\$787,752.50

LEA : 123467103 Souderton Area SD

Printed 11/30/2022 3:20:22 PM

General Fund (10)

2690 Other Operation and Maintenance of Plant Services	<u>Elementary</u>	<u>Secondary</u>	<u>Federal</u>	<u>Total</u>
400 <u>Purchased Property Services</u>				
410 Cleaning Services				69,658.57
420 Utility Services				171,271.53
440 Rentals				828.00
460 Extermination Services				5,534.60
Total Purchased Property Services				\$247,292.70
500 <u>Other Purchased Services</u>				
529 Other Insurance				258,350.00
530 Communications				151,719.78
Total Other Purchased Services				\$410,069.78
600 <u>Supplies</u>				
610 General Supplies		4,399.50		4,399.50
620 Energy				1,227,332.53
Total Supplies		\$4,399.50		\$1,231,732.03
800 <u>Other Objects</u>				
810 Dues and Fees				276.84
Total Other Objects				\$276.84
Total 2690 Other Operation and Maintenance of Plant Services		\$4,399.50		\$1,889,371.35

LEA : 123467103 Souderton Area SD

Printed 11/30/2022 3:20:22 PM

General Fund (10)

2700 Student Transportation Services

	<u>Elementary</u>	<u>Secondary</u>	<u>Federal</u>	<u>Total</u>
500 <u>Other Purchased Services</u>				
511 Student Transportation Services from Another LEA Within the State				13,870.08
513 Contracted Carriers				7,856,159.86
516 Student Transportation Services From the IU			6,030.50	250,109.80
519 Student Transportation Services From Other Sources			11,476.50	22,189.50
Total Other Purchased Services			\$17,507.00	\$8,142,329.24
Total 2700 Student Transportation Services			\$17,507.00	\$8,142,329.24

LEA : 123467103 Souderton Area SD

Printed 11/30/2022 3:20:22 PM

General Fund (10)

2720 Vehicle Operation Services

	<u>Elementary</u>	<u>Secondary</u>	<u>Federal</u>	<u>Total</u>
500 <u>Other Purchased Services</u>				
513 Contracted Carriers				6,763,444.81
516 Student Transportation Services From the IU			6,030.50	250,109.80
519 Student Transportation Services From Other Sources			11,476.50	22,189.50
Total Other Purchased Services			\$17,507.00	\$7,035,744.11
Total 2720 Vehicle Operation Services			\$17,507.00	\$7,035,744.11

LEA : 123467103 Souderton Area SD

Printed 11/30/2022 3:20:22 PM

General Fund (10)

2750 Nonpublic Transportation

Elementary Secondary Federal Total

500 Other Purchased Services

511 Student Transportation Services from Another LEA Within the State 13,870.08

513 Contracted Carriers 1,092,715.05

Total Other Purchased Services \$1,106,585.13

Total 2750 Nonpublic Transportation \$1,106,585.13

LEA : 123467103 Souderton Area SD

Printed 11/30/2022 3:20:22 PM

General Fund (10)

2800 Support Services – Central

Elementary Secondary Federal Total

100 <u>Personnel Services – Salaries</u>			
100 Personnel Services – Salaries			888,236.74
Total Personnel Services – Salaries			\$888,236.74
200 <u>Personnel Services – Employee Benefits</u>			
210 Group Insurance – Contracted Provider			4,785.91
220 Social Security Contributions			62,975.56
230 PSERS Retirement Contributions			300,239.01
240 Tuition Reimbursement			11,386.00
250 Unemployment Compensation			37.98
260 Workers' Compensation			3,232.67
270 Group Insurance – Self-Insurance			142,811.38
291 Other Retirement Plans			23,505.64
Total Personnel Services – Employee Benefits			\$548,974.15
300 <u>Purchased Professional and Technical Services</u>			
329 Professional Educational Services – Other			3,053.50
330 Other Professional Services			76,133.85
340 Technical Services			69,321.56
360 Employee Training and Development Services			2,019.00
Total Purchased Professional and Technical Services			\$150,527.91
400 <u>Purchased Property Services</u>			
430 Repairs and Maintenance Services			16,999.15
440 Rentals			107,159.83
Total Purchased Property Services			\$124,158.98
500 <u>Other Purchased Services</u>			
530 Communications			320,556.29
549 Other Advertising/Public Relations			600.00
550 Printing and Binding			67.15
580 Travel			537.50
Total Other Purchased Services			\$321,760.94
600 <u>Supplies</u>			
610 General Supplies			(582,405.10)
650 Supplies & Fees – Technology Related			801,374.77
Total Supplies			\$218,969.67
700 <u>Property</u>			
752 Capital Equipment – Original and Additional			668,000.00
756 Capitalized Technology Equipment – Original			368,670.03
Total Property			\$1,036,670.03
800 <u>Other Objects</u>			
810 Dues and Fees			11,829.20
Total Other Objects			\$11,829.20
Total 2800 Support Services – Central			\$3,301,127.62

LEA : 123467103 Souderton Area SD

Printed 11/30/2022 3:20:22 PM

General Fund (10)

2810 Planning, Research, Development and Evaluation Services	<u>Elementary</u>	<u>Secondary</u>	<u>Federal</u>	<u>Total</u>
100 <u>Personnel Services – Salaries</u>				
100 Personnel Services – Salaries				96,889.55
Total Personnel Services – Salaries				\$96,889.55
200 <u>Personnel Services – Employee Benefits</u>				
210 Group Insurance – Contracted Provider				582.38
220 Social Security Contributions				7,329.76
230 PSERS Retirement Contributions				32,897.28
260 Workers' Compensation				308.53
270 Group Insurance – Self-Insurance				17,329.56
291 Other Retirement Plans				3,876.30
Total Personnel Services – Employee Benefits				\$62,323.81
Total 2810 Planning, Research, Development and Evaluation Services				\$159,213.36

LEA : 123467103 Souderton Area SD

Printed 11/30/2022 3:20:22 PM

General Fund (10)

2820 Information Services

Elementary Secondary Federal Total

100 <u>Personnel Services – Salaries</u>				
100 Personnel Services – Salaries				85,942.76
Total Personnel Services – Salaries				\$85,942.76
200 <u>Personnel Services – Employee Benefits</u>				
210 Group Insurance – Contracted Provider				418.48
220 Social Security Contributions				6,149.04
230 PSERS Retirement Contributions				29,244.06
250 Unemployment Compensation				9.60
260 Workers' Compensation				464.00
270 Group Insurance – Self-Insurance				15,318.42
291 Other Retirement Plans				3,750.00
Total Personnel Services – Employee Benefits				\$55,353.60
Total 2820 Information Services				\$141,296.36

LEA : 123467103 Souderton Area SD

Printed 11/30/2022 3:20:22 PM

General Fund (10)

2821 Supervision of Information Services	<u>Elementary</u>	<u>Secondary</u>	<u>Federal</u>	<u>Total</u>
100 <u>Personnel Services – Salaries</u>				
100 Personnel Services – Salaries				85,942.76
Total Personnel Services – Salaries				\$85,942.76
200 <u>Personnel Services – Employee Benefits</u>				
210 Group Insurance – Contracted Provider				418.48
220 Social Security Contributions				6,149.04
230 PSERS Retirement Contributions				29,244.06
250 Unemployment Compensation				9.60
260 Workers' Compensation				464.00
270 Group Insurance – Self-Insurance				15,318.42
291 Other Retirement Plans				3,750.00
Total Personnel Services – Employee Benefits				\$55,353.60
Total 2821 Supervision of Information Services				\$141,296.36

LEA : 123467103 Souderton Area SD

Printed 11/30/2022 3:20:22 PM

General Fund (10)

2830 Staff Services

	<u>Elementary</u>	<u>Secondary</u>	<u>Federal</u>	<u>Total</u>
100 <u>Personnel Services – Salaries</u>				
100 Personnel Services – Salaries				380,015.40
Total Personnel Services – Salaries				\$380,015.40
200 <u>Personnel Services – Employee Benefits</u>				
210 Group Insurance – Contracted Provider				1,474.52
220 Social Security Contributions				25,849.87
230 PSERS Retirement Contributions				126,725.37
240 Tuition Reimbursement				11,386.00
250 Unemployment Compensation				28.38
260 Workers' Compensation				1,454.14
270 Group Insurance – Self-Insurance				68,472.28
291 Other Retirement Plans				12,200.00
Total Personnel Services – Employee Benefits				\$247,590.56
300 <u>Purchased Professional and Technical Services</u>				
329 Professional Educational Services – Other				3,053.50
360 Employee Training and Development Services				2,019.00
Total Purchased Professional and Technical Services				\$5,072.50
500 <u>Other Purchased Services</u>				
549 Other Advertising/Public Relations				600.00
550 Printing and Binding				62.00
Total Other Purchased Services				\$662.00
600 <u>Supplies</u>				
610 General Supplies				1,458.20
650 Supplies & Fees – Technology Related				57,013.46
Total Supplies				\$58,471.66
800 <u>Other Objects</u>				
810 Dues and Fees				8,229.20
Total Other Objects				\$8,229.20
Total 2830 Staff Services				\$700,041.32

LEA : 123467103 Souderton Area SD

Printed 11/30/2022 3:20:22 PM

General Fund (10)

2831 Supervision of Staff Services	Elementary	Secondary	Federal	Total
100 <u>Personnel Services – Salaries</u>				
100 Personnel Services – Salaries				259,443.57
Total Personnel Services – Salaries				\$259,443.57
200 <u>Personnel Services – Employee Benefits</u>				
210 Group Insurance – Contracted Provider				1,474.52
220 Social Security Contributions				17,234.45
230 PSERS Retirement Contributions				86,363.78
260 Workers' Compensation				802.19
270 Group Insurance – Self-Insurance				26,969.27
291 Other Retirement Plans				12,200.00
Total Personnel Services – Employee Benefits				\$145,044.21
300 <u>Purchased Professional and Technical Services</u>				
329 Professional Educational Services – Other				3,053.50
Total Purchased Professional and Technical Services				\$3,053.50
500 <u>Other Purchased Services</u>				
549 Other Advertising/Public Relations				600.00
550 Printing and Binding				62.00
Total Other Purchased Services				\$662.00
600 <u>Supplies</u>				
610 General Supplies				1,458.20
650 Supplies & Fees – Technology Related				40,128.26
Total Supplies				\$41,586.46
800 <u>Other Objects</u>				
810 Dues and Fees				8,229.20
Total Other Objects				\$8,229.20
Total 2831 Supervision of Staff Services				\$458,018.94

LEA : 123467103 Souderton Area SD

Printed 11/30/2022 3:20:22 PM

General Fund (10)				
2833 Staff Accounting Services	<u>Elementary</u>	<u>Secondary</u>	<u>Federal</u>	<u>Total</u>
600 <u>Supplies</u>				
650 Supplies & Fees – Technology Related				16,885.20
Total Supplies				\$16,885.20
Total 2833 Staff Accounting Services				\$16,885.20

LEA : 123467103 Souderton Area SD

Printed 11/30/2022 3:20:22 PM

General Fund (10)

2834 Staff Development Services – Non-Instructional, Certified Staff Only	<u>Elementary</u>	<u>Secondary</u>	<u>Federal</u>	<u>Total</u>
200 <u>Personnel Services – Employee Benefits</u>				
240 Tuition Reimbursement				6,192.00
Total Personnel Services – Employee Benefits				\$6,192.00
300 <u>Purchased Professional and Technical Services</u>				
360 Employee Training and Development Services				495.00
Total Purchased Professional and Technical Services				\$495.00
Total 2834 Staff Development Services – Non-Instructional, Certified Staff Only				\$6,687.00

LEA : 123467103 Souderton Area SD

Printed 11/30/2022 3:20:22 PM

General Fund (10)

2835 Health Services

	<u>Elementary</u>	<u>Secondary</u>	<u>Federal</u>	<u>Total</u>
100 <u>Personnel Services – Salaries</u>				
100 Personnel Services – Salaries				40,011.00
Total Personnel Services – Salaries				\$40,011.00
200 <u>Personnel Services – Employee Benefits</u>				
220 Social Security Contributions				2,834.38
230 PSERS Retirement Contributions				13,979.73
250 Unemployment Compensation				9.60
260 Workers' Compensation				216.06
270 Group Insurance – Self-Insurance				15,686.04
Total Personnel Services – Employee Benefits				\$32,725.81
Total 2835 Health Services				\$72,736.81

LEA : 123467103 Souderton Area SD

Printed 11/30/2022 3:20:22 PM

General Fund (10)

2836 Staff Development Services – Non-Instructional, Non-Certified Staff Only	<u>Elementary</u>	<u>Secondary</u>	<u>Federal</u>	<u>Total</u>
200 <u>Personnel Services – Employee Benefits</u>				
240 Tuition Reimbursement				5,194.00
Total Personnel Services – Employee Benefits				\$5,194.00
300 <u>Purchased Professional and Technical Services</u>				
360 Employee Training and Development Services				1,524.00
Total Purchased Professional and Technical Services				\$1,524.00
Total 2836 Staff Development Services – Non-Instructional, Non-Certified Staff Only				\$6,718.00

LEA : 123467103 Souderton Area SD

Printed 11/30/2022 3:20:22 PM

General Fund (10)

2839 Other Staff Services

Elementary Secondary Federal Total

100 <u>Personnel Services – Salaries</u>				
100 Personnel Services – Salaries				80,560.83
Total Personnel Services – Salaries				\$80,560.83
200 <u>Personnel Services – Employee Benefits</u>				
220 Social Security Contributions				5,781.04
230 PSERS Retirement Contributions				26,381.86
250 Unemployment Compensation				18.78
260 Workers' Compensation				435.89
270 Group Insurance – Self-Insurance				25,816.97
Total Personnel Services – Employee Benefits				\$58,434.54
Total 2839 Other Staff Services				\$138,995.37

LEA : 123467103 Souderton Area SD

Printed 11/30/2022 3:20:22 PM

General Fund (10)

2840 Data Processing Services

	<u>Elementary</u>	<u>Secondary</u>	<u>Federal</u>	<u>Total</u>
100 <u>Personnel Services – Salaries</u>				
100 Personnel Services – Salaries				325,389.03
Total Personnel Services – Salaries				\$325,389.03
200 <u>Personnel Services – Employee Benefits</u>				
210 Group Insurance – Contracted Provider				2,310.53
220 Social Security Contributions				23,646.89
230 PSERS Retirement Contributions				111,372.30
260 Workers' Compensation				1,006.00
270 Group Insurance – Self-Insurance				41,691.12
291 Other Retirement Plans				3,679.34
Total Personnel Services – Employee Benefits				\$183,706.18
300 <u>Purchased Professional and Technical Services</u>				
330 Other Professional Services				76,133.85
340 Technical Services				69,321.56
Total Purchased Professional and Technical Services				\$145,455.41
400 <u>Purchased Property Services</u>				
430 Repairs and Maintenance Services				16,999.15
440 Rentals				107,159.83
Total Purchased Property Services				\$124,158.98
500 <u>Other Purchased Services</u>				
530 Communications				320,556.29
550 Printing and Binding				5.15
580 Travel				537.50
Total Other Purchased Services				\$321,098.94
600 <u>Supplies</u>				
610 General Supplies				(583,863.30)
650 Supplies & Fees – Technology Related				744,361.31
Total Supplies				\$160,498.01
700 <u>Property</u>				
752 Capital Equipment – Original and Additional				668,000.00
756 Capitalized Technology Equipment – Original				368,670.03
Total Property				\$1,036,670.03
800 <u>Other Objects</u>				
810 Dues and Fees				3,600.00
Total Other Objects				\$3,600.00
Total 2840 Data Processing Services				\$2,300,576.58

LEA : 123467103 Souderton Area SD

Printed 11/30/2022 3:20:22 PM

General Fund (10)

2900 Other Support Services	<u>Elementary</u>	<u>Secondary</u>	<u>Federal</u>	<u>Total</u>
500 <u>Other Purchased Services</u>				
595 IU Payments By Withholding				81,177.11
Total Other Purchased Services				\$81,177.11
Total 2900 Other Support Services				\$81,177.11

LEA : 123467103 Souderton Area SD

Printed 11/30/2022 3:20:22 PM

General Fund (10)

2910 Support Services Not Listed Elsewhere In the 2000 Series

Elementary Secondary Federal Total

500 Other Purchased Services

595 IU Payments By Withholding 81,177.11

Total Other Purchased Services \$81,177.11

Total 2910 Support Services Not Listed Elsewhere In the 2000 Series \$81,177.11

LEA : 123467103 Souderton Area SD

Printed 11/30/2022 3:20:37 PM

General Fund (10)

3000 Operation of Non-Instructional Services		<u>Total</u>
100 <u>Personnel Services – Salaries</u>		
100 Personnel Services – Salaries		736,659.39
Total Personnel Services – Salaries		\$736,659.39
200 <u>Personnel Services – Employee Benefits</u>		
210 Group Insurance – Contracted Provider		312.50
220 Social Security Contributions		55,746.19
230 PSERS Retirement Contributions		249,742.06
250 Unemployment Compensation		379.75
260 Workers' Compensation		3,703.13
270 Group Insurance – Self-Insurance		40,328.14
291 Other Retirement Plans		1,500.00
Total Personnel Services – Employee Benefits		\$351,711.77
300 <u>Purchased Professional and Technical Services</u>		
330 Other Professional Services		12,507.46
390 Other Purchased Professional and Technical Services		56,820.30
Total Purchased Professional and Technical Services		\$69,327.76
400 <u>Purchased Property Services</u>		
430 Repairs and Maintenance Services		31,574.84
440 Rentals		7,185.92
Total Purchased Property Services		\$38,760.76
500 <u>Other Purchased Services</u>		
510 Student Transportation Services		159,560.87
520 Insurance – General		7,207.00
550 Printing and Binding		1,893.14
580 Travel		7,992.50
599 Other Miscellaneous Purchased Services		24,988.30
Total Other Purchased Services		\$201,641.81
600 <u>Supplies</u>		
610 General Supplies		113,494.81
630 Food		3,307.58
640 Books and Periodicals		24,452.21
650 Supplies & Fees – Technology Related		4,899.50
Total Supplies		\$146,154.10
700 <u>Property</u>		
752 Capital Equipment – Original and Additional		9,075.00
762 Capitalized Equipment - Replacement		15,686.76
Total Property		\$24,761.76
800 <u>Other Objects</u>		
810 Dues and Fees		22,213.74
860 Grants To Municipal and Community Service Organizations		2,265.76
890 Miscellaneous Expenditures		33,450.00

LEA : 123467103 Souderton Area SD

Printed 11/30/2022 3:20:37 PM

General Fund (10)

3000 Operation of Non-Instructional Services

	<u>Total</u>
Total Other Objects	\$57,929.50
Total 3000 Operation of Non-Instructional Services	\$1,626,946.85

LEA : 123467103 Souderton Area SD

Printed 11/30/2022 3:20:37 PM

General Fund (10)

3200 Student Activities

	<u>Elementary</u>	<u>Secondary</u>	<u>Federal</u>	<u>Total</u>
100 <u>Personnel Services – Salaries</u>				
100 Personnel Services – Salaries				736,659.39
Total Personnel Services – Salaries				\$736,659.39
200 <u>Personnel Services – Employee Benefits</u>				
210 Group Insurance – Contracted Provider				312.50
220 Social Security Contributions				55,746.19
230 PSERS Retirement Contributions				249,742.06
250 Unemployment Compensation				379.75
260 Workers' Compensation				3,703.13
270 Group Insurance – Self-Insurance				40,328.14
291 Other Retirement Plans				1,500.00
Total Personnel Services – Employee Benefits				\$351,711.77
300 <u>Purchased Professional and Technical Services</u>				
330 Other Professional Services				12,507.46
390 Other Purchased Professional and Technical Services				56,820.30
Total Purchased Professional and Technical Services				\$69,327.76
400 <u>Purchased Property Services</u>				
430 Repairs and Maintenance Services				31,574.84
440 Rentals				7,185.92
Total Purchased Property Services				\$38,760.76
500 <u>Other Purchased Services</u>				
510 Student Transportation Services				159,560.87
520 Insurance – General				7,207.00
550 Printing and Binding				1,893.14
580 Travel				7,992.50
599 Other Miscellaneous Purchased Services				24,988.30
Total Other Purchased Services				\$201,641.81
600 <u>Supplies</u>				
610 General Supplies				113,494.81
630 Food				3,307.58
640 Books and Periodicals				24,452.21
650 Supplies & Fees – Technology Related				4,899.50
Total Supplies				\$146,154.10
700 <u>Property</u>				
752 Capital Equipment – Original and Additional				9,075.00
762 Capitalized Equipment - Replacement				15,686.76
Total Property				\$24,761.76
800 <u>Other Objects</u>				
810 Dues and Fees				22,213.74
860 Grants To Municipal and Community Service Organizations				2,265.76
890 Miscellaneous Expenditures				100.00

LEA : 123467103 Souderton Area SD

Printed 11/30/2022 3:20:37 PM

General Fund (10)

3200 Student Activities

	<u>Elementary</u>	<u>Secondary</u>	<u>Federal</u>	<u>Total</u>
Total Other Objects				\$24,579.50
Total 3200 Student Activities				\$1,593,596.85

LEA : 123467103 Souderton Area SD

Printed 11/30/2022 3:20:37 PM

General Fund (10)

3400 Scholarships and Awards

Elementary Secondary Federal Total

800 Other Objects

890 Miscellaneous Expenditures 33,350.00

Total Other Objects \$33,350.00

Total 3400 Scholarships and Awards \$33,350.00

LEA : 123467103 Souderton Area SD

Printed 11/30/2022 3:20:46 PM

General Fund (10)

4000 Facilities Acquisition, Construction and Improvement Services		<u>Total</u>
400 <u>Purchased Property Services</u>		
450 Construction Services		15,180.00
Total Purchased Property Services		\$15,180.00
Total 4000 Facilities Acquisition, Construction and Improvement Services		\$15,180.00

LEA : 123467103 Souderton Area SD

Printed 11/30/2022 3:20:46 PM

General Fund (10)

4600 Existing Building Improvement Services	<u>Elementary</u>	<u>Secondary</u>	<u>Federal</u>	<u>Total</u>
400 <u>Purchased Property Services</u>				
450 Construction Services				15,180.00
Total Purchased Property Services				\$15,180.00
Total 4600 Existing Building Improvement Services				\$15,180.00

LEA : 123467103 Souderton Area SD

Printed 11/30/2022 3:21:04 PM

General Fund (10)

5000 Other Expenditures and Financing Uses

Total

800 <u>Other Objects</u>	
830 Interest	1,357,796.98
Total Other Objects	\$1,357,796.98
900 <u>Other Uses of Funds</u>	
910 Redemption of Principal	8,676,426.22
Total Other Uses of Funds	\$8,676,426.22
Total 5000 Other Expenditures and Financing Uses	\$10,034,223.20

LEA : 123467103 Souderton Area SD

Printed 11/30/2022 3:21:04 PM

General Fund (10)

5100 Debt Service / Other Expenditures and Financing Uses	<u>Elementary</u>	<u>Secondary</u>	<u>Federal</u>	<u>Total</u>
800 <u>Other Objects</u>				
830 Interest				1,357,796.98
Total Other Objects				\$1,357,796.98
900 <u>Other Uses of Funds</u>				
910 Redemption of Principal				8,676,426.22
Total Other Uses of Funds				\$8,676,426.22
Total 5100 Debt Service / Other Expenditures and Financing Uses				\$10,034,223.20

LEA : 123467103 Souderton Area SD

Printed 11/30/2022 3:21:04 PM

General Fund (10)				
5110 Debt Service	<u>Elementary</u>	<u>Secondary</u>	<u>Federal</u>	<u>Total</u>
800 <u>Other Objects</u>				
830 Interest				1,357,536.96
Total Other Objects				\$1,357,536.96
900 <u>Other Uses of Funds</u>				
910 Redemption of Principal				8,645,000.00
Total Other Uses of Funds				\$8,645,000.00
Total 5110 Debt Service				\$10,002,536.96

LEA : 123467103 Souderton Area SD

Printed 11/30/2022 3:21:04 PM

General Fund (10)

5140 Leases	<u>Elementary</u>	<u>Secondary</u>	<u>Federal</u>	<u>Total</u>
800 <u>Other Objects</u>				
830 Interest				260.02
Total Other Objects				\$260.02
900 <u>Other Uses of Funds</u>				
910 Redemption of Principal				31,426.22
Total Other Uses of Funds				\$31,426.22
Total 5140 Leases				\$31,686.24

LEA : 123467103 Souderton Area SD

Printed 11/30/2022 3:20:30 PM

Other Capital Projects Fund (39)

2000 Support Services

Total

300 Purchased Professional and Technical Services

330 Other Professional Services	632,041.44
---------------------------------	------------

Total Purchased Professional and Technical Services	\$632,041.44
--	---------------------

500 Other Purchased Services

550 Printing and Binding	2,400.00
--------------------------	----------

Total Other Purchased Services	\$2,400.00
---------------------------------------	-------------------

Total 2000 Support Services	\$634,441.44
------------------------------------	---------------------

LEA : 123467103 Souderton Area SD

Printed 11/30/2022 3:20:30 PM

Other Capital Projects Fund (39)

2300 Support Services – Administration

<u>Elementary</u>	<u>Secondary</u>	<u>Federal</u>	<u>Total</u>
-------------------	------------------	----------------	--------------

300 Purchased Professional and Technical Services

330 Other Professional Services			625,601.44
---------------------------------	--	--	------------

Total Purchased Professional and Technical Services			\$625,601.44
--	--	--	---------------------

500 Other Purchased Services

550 Printing and Binding			2,400.00
--------------------------	--	--	----------

Total Other Purchased Services			\$2,400.00
---------------------------------------	--	--	-------------------

Total 2300 Support Services – Administration			\$628,001.44
---	--	--	---------------------

LEA : 123467103 Souderton Area SD

Printed 11/30/2022 3:20:30 PM

Other Capital Projects Fund (39)

2390 Other Administration Services

<u>Elementary</u>	<u>Secondary</u>	<u>Federal</u>	<u>Total</u>
-------------------	------------------	----------------	--------------

300 Purchased Professional and Technical Services

330 Other Professional Services			625,601.44
---------------------------------	--	--	------------

Total Purchased Professional and Technical Services			\$625,601.44
--	--	--	---------------------

500 Other Purchased Services

550 Printing and Binding			2,400.00
--------------------------	--	--	----------

Total Other Purchased Services			\$2,400.00
---------------------------------------	--	--	-------------------

Total 2390 Other Administration Services			\$628,001.44
---	--	--	---------------------

LEA : 123467103 Souderton Area SD

Printed 11/30/2022 3:20:30 PM

Other Capital Projects Fund (39)

2600 Operation and Maintenance of Plant Services

<u>Elementary</u>	<u>Secondary</u>	<u>Federal</u>	<u>Total</u>
-------------------	------------------	----------------	--------------

300 Purchased Professional and Technical Services

330 Other Professional Services			6,440.00
---------------------------------	--	--	----------

Total Purchased Professional and Technical Services			\$6,440.00
---	--	--	------------

Total 2600 Operation and Maintenance of Plant Services			\$6,440.00
--	--	--	------------

LEA : 123467103 Souderton Area SD

Printed 11/30/2022 3:20:30 PM

Other Capital Projects Fund (39)

2690 Other Operation and Maintenance of Plant Services

Elementary

Secondary

Federal

Total

300 Purchased Professional and Technical Services

330 Other Professional Services

6,440.00

Total Purchased Professional and Technical Services				\$6,440.00
Total 2690 Other Operation and Maintenance of Plant Services				\$6,440.00

LEA : 123467103 Souderton Area SD

Printed 11/30/2022 3:20:53 PM

Other Capital Projects Fund (39)

4000 Facilities Acquisition, Construction and Improvement Services

Total

300 Purchased Professional and Technical Services

330 Other Professional Services	1,419,656.78
---------------------------------	--------------

Total Purchased Professional and Technical Services	\$1,419,656.78
--	-----------------------

400 Purchased Property Services

430 Repairs and Maintenance Services	108,201.20
--------------------------------------	------------

450 Construction Services	4,799,552.10
---------------------------	--------------

Total Purchased Property Services	\$4,907,753.30
--	-----------------------

500 Other Purchased Services

549 Other Advertising/Public Relations	7,382.35
--	----------

Total Other Purchased Services	\$7,382.35
---------------------------------------	-------------------

600 Supplies

610 General Supplies	913.50
----------------------	--------

Total Supplies	\$913.50
-----------------------	-----------------

700 Property

790 Other Property	317.30
--------------------	--------

Total Property	\$317.30
-----------------------	-----------------

Total 4000 Facilities Acquisition, Construction and Improvement Services	\$6,336,023.23
---	-----------------------

LEA : 123467103 Souderton Area SD

Printed 11/30/2022 3:20:53 PM

Other Capital Projects Fund (39)

4400 Architecture and Engineering Services / Educational Specifications – Improvements	<u>Elementary</u>	<u>Secondary</u>	<u>Federal</u>	<u>Total</u>
300 <u>Purchased Professional and Technical Services</u>				
330 Other Professional Services				1,412,662.20
Total Purchased Professional and Technical Services				\$1,412,662.20
500 <u>Other Purchased Services</u>				
549 Other Advertising/Public Relations				7,382.35
Total Other Purchased Services				\$7,382.35
600 <u>Supplies</u>				
610 General Supplies				913.50
Total Supplies				\$913.50
Total 4400 Architecture and Engineering Services / Educational Specifications – Improvements				\$1,420,958.05

LEA : 123467103 Souderton Area SD

Printed 11/30/2022 3:20:53 PM

Other Capital Projects Fund (39)

4600 Existing Building Improvement Services	<u>Elementary</u>	<u>Secondary</u>	<u>Federal</u>	<u>Total</u>
300 <u>Purchased Professional and Technical Services</u>				
330 Other Professional Services				6,994.58
Total Purchased Professional and Technical Services				\$6,994.58
400 <u>Purchased Property Services</u>				
430 Repairs and Maintenance Services				108,201.20
450 Construction Services				4,799,552.10
Total Purchased Property Services				\$4,907,753.30
700 <u>Property</u>				
790 Other Property				317.30
Total Property				\$317.30
Total 4600 Existing Building Improvement Services				\$4,915,065.18

LEA : 123467103 Souderton Area SD

Printed 11/30/2022 3:21:10 PM

Other Capital Projects Fund (39)

5000 Other Expenditures and Financing Uses

Total

900 Other Uses of Funds

939 Other Fund Transfers

814,666.58

Total Other Uses of Funds

\$814,666.58

Total 5000 Other Expenditures and Financing Uses

\$814,666.58

LEA : 123467103 Souderton Area SD

Printed 11/30/2022 3:21:10 PM

Other Capital Projects Fund (39)

5200 Interfund Transfers – Out

Elementary Secondary Federal Total

900 Other Uses of Funds

939 Other Fund Transfers 814,666.58

Total Other Uses of Funds \$814,666.58

Total 5200 Interfund Transfers – Out \$814,666.58

LEA : 123467103 Souderton Area SD

Printed 11/30/2022 3:21:10 PM

Other Capital Projects Fund (39)

5210 General Fund Transfers	<u>Elementary</u>	<u>Secondary</u>	<u>Federal</u>	<u>Total</u>
900 <u>Other Uses of Funds</u>				
939 Other Fund Transfers				814,666.58
Total Other Uses of Funds				\$814,666.58
Total 5210 General Fund Transfers				\$814,666.58

LEA : 123467103 Souderton Area SD

Printed 11/30/2022 3:21:16 PM

	<u>General Fund(10)</u>	<u>Student Sponsored Activity Fund(21)</u>	<u>Public Purpose Trust(27)</u>	<u>Other Compt Approved (28)</u>	<u>Athletic / Activity(29)</u>
1000 <u>Instruction</u>					
1100 Regular Programs - Elementary / Secondary	57,947,045.27				
1200 Special Programs - Elementary / Secondary	26,610,698.79				
1300 Vocational Education	1,746,643.98				
1400 Other Instructional Programs - Elementary / Secondary	702,680.30				
1500 Nonpublic School Programs	5,239.93				
1600 Adult Education Programs	132,241.78				
Total Instruction	\$87,144,550.05				
2000 <u>Support Services</u>					
2100 Support Services - Students	5,447,674.30				
2200 Support Services - Instructional Staff	4,656,481.37				
2300 Support Services - Administration	5,538,955.15				
2400 Support Services - Pupil Health	1,591,227.12				
2500 Support Services - Business	1,045,517.20				
2600 Operation and Maintenance of Plant Services	9,929,676.84				
2700 Student Transportation Services	8,142,329.24				
2800 Support Services - Central	3,301,127.62				
2900 Other Support Services	81,177.11				
Total Support Services	\$39,734,165.95				
3000 <u>Operation of Non-Instructional Services</u>					
3200 Student Activities	1,593,596.85				
3400 Scholarships and Awards	33,350.00				
Total Operation of Non-Instructional Services	\$1,626,946.85				
4000 <u>Facilities Acquisition, Construction and Improvement Services</u>					
4400 Architecture and Engineering Services / Educational Specifications - Improvements					
4600 Existing Building Improvement Services	15,180.00				
Total Facilities Acquisition, Construction and Improvement Services	\$15,180.00				
5000 <u>Other Expenditures and Financing Uses</u>					
5100 Debt Service / Other Expenditures and Financing Uses	10,034,223.20				
5200 Interfund Transfers - Out					
Total Other Expenditures and Financing Uses	\$10,034,223.20				
TOTAL ACTUAL EXPENDITURES & OTHER FINANCING USES	\$138,555,066.05				

LEA : 123467103 Souderton Area SD

Printed 11/30/2022 3:21:16 PM

	<u>Capital Reserve (690.1850)(31)</u>	<u>Capital Reserve (1431)(32)</u>	<u>Other Capital Projects Fund(39)</u>	<u>Debt Service(40)</u>	<u>Permanent(90)</u>
1000 <u>Instruction</u>					
1100 Regular Programs - Elementary / Secondary					
1200 Special Programs - Elementary / Secondary					
1300 Vocational Education					
1400 Other Instructional Programs - Elementary / Secondary					
1500 Nonpublic School Programs					
1600 Adult Education Programs					
Total Instruction					
2000 <u>Support Services</u>					
2100 Support Services - Students					
2200 Support Services - Instructional Staff					
2300 Support Services - Administration			628,001.44		
2400 Support Services - Pupil Health					
2500 Support Services - Business					
2600 Operation and Maintenance of Plant Services			6,440.00		
2700 Student Transportation Services					
2800 Support Services - Central					
2900 Other Support Services					
Total Support Services			\$634,441.44		
3000 <u>Operation of Non-Instructional Services</u>					
3200 Student Activities					
3400 Scholarships and Awards					
Total Operation of Non-Instructional Services					
4000 <u>Facilities Acquisition, Construction and Improvement Services</u>					
4400 Architecture and Engineering Services / Educational Specifications - Improvements			1,420,958.05		
4600 Existing Building Improvement Services			4,915,065.18		
Total Facilities Acquisition, Construction and Improvement Services			\$6,336,023.23		
5000 <u>Other Expenditures and Financing Uses</u>					
5100 Debt Service / Other Expenditures and Financing Uses					
5200 Interfund Transfers - Out			814,666.58		
Total Other Expenditures and Financing Uses			\$814,666.58		
TOTAL ACTUAL EXPENDITURES & OTHER FINANCING USES			\$7,785,131.25		

LEA : 123467103 Souderton Area SD

Printed 11/30/2022 3:21:16 PM

	<u>Total</u>
1000 <u>Instruction</u>	
1100 Regular Programs - Elementary / Secondary	57,947,045.27
1200 Special Programs - Elementary / Secondary	26,610,698.79
1300 Vocational Education	1,746,643.98
1400 Other Instructional Programs - Elementary / Secondary	702,680.30
1500 Nonpublic School Programs	5,239.93
1600 Adult Education Programs	132,241.78
Total Instruction	\$87,144,550.05
2000 <u>Support Services</u>	
2100 Support Services - Students	5,447,674.30
2200 Support Services - Instructional Staff	4,656,481.37
2300 Support Services - Administration	6,166,956.59
2400 Support Services - Pupil Health	1,591,227.12
2500 Support Services - Business	1,045,517.20
2600 Operation and Maintenance of Plant Services	9,936,116.84
2700 Student Transportation Services	8,142,329.24
2800 Support Services - Central	3,301,127.62
2900 Other Support Services	81,177.11
Total Support Services	\$40,368,607.39
3000 <u>Operation of Non-Instructional Services</u>	
3200 Student Activities	1,593,596.85
3400 Scholarships and Awards	33,350.00
Total Operation of Non-Instructional Services	\$1,626,946.85
4000 <u>Facilities Acquisition, Construction and Improvement Services</u>	
4400 Architecture and Engineering Services / Educational Specifications - Improvements	1,420,958.05
4600 Existing Building Improvement Services	4,930,245.18
Total Facilities Acquisition, Construction and Improvement Services	\$6,351,203.23
5000 <u>Other Expenditures and Financing Uses</u>	
5100 Debt Service / Other Expenditures and Financing Uses	10,034,223.20
5200 Interfund Transfers - Out	814,666.58
Total Other Expenditures and Financing Uses	\$10,848,889.78
TOTAL ACTUAL EXPENDITURES & OTHER FINANCING USES	\$146,340,197.30

LEA : 123467103 Souderton Area SD

Printed 11/30/2022 3:21:33 PM

PSERS Salary Data (Salary Data should relate to the General Fund only)

Amount	Description	Amount
	Total Salary Base for salaries subject to PSERS withholding	57,229,012.35
	Total Federally Funded salaries subject to PSERS withholding	2,258,342.84

Title I Expenditure Data

Amount	Description	Amount
	Expenditures Funded with Current Title I Funds	330,840.88
	Expenditures Funded with Carry over Title I Funds	
Total Title I Expenditure Data		\$330,840.88

Title IV Revenue Data

Amount	Description	Amount
	Revenue from Title IV-A-1: Student Support and Academic Enrichment Grants	21,040.66
	Revenue from Title IV-B: 21st Century Community Learning Centers	

Title V Revenue Data

Amount	Description	Amount
	Revenue from Title V-B-2: Rural and Low-Income School Programs	
	Revenue from Title V-B-1: Small Rural School Achievement (Directly from the Federal Govt)	

1 . <u>Current Special Education Expenditures within Function 1000.\r\nSee list of exclusions in the note below.</u>	6,926,606.73
2 . <u>Current Special Education Expenditures within Function 2000.\r\nSee list of exclusions in the note below.</u>	7,066,441.15
3 . <u>Current Special Education Expenditures within Sub-Function 2100.\r\nThis data should also be included in line 2 above.\r\nSee list of exclusions in the note below.</u>	
4 . <u>Current Special Education Expenditures within Sub-Function 2200.\r\nThis data should also be included in line 2 above.\r\nSee list of exclusions in the note below.</u>	2,438.00
5 . <u>Current Special Education Expenditures within Sub-Function 2700.\r\nThis data should also be included in line 2 above.\r\nSee list of exclusions in the note below.</u>	6,785,634.31
6 . <u>Current Special Education Expenditures within Sub-Function 3100.\r\nSee list of exclusions in the note below.</u>	
7 . <u>Current Special Education Expenditures within Sub-Function 3200.\r\nSee list of exclusions in the note below.</u>	

Note: The Current Special Education Expenditure amounts for each line should be calculated as follows:

- * Include the total expenditures for special education costs from all funds for the function/sub-function requested
- * Exclude data from sub-functions: 1243,1450,1500,1600,1807,2280,2450,2750,2990
- * Exclude data from objects: 322,511,512,516,561,562,564,566,592,593,594,595,596,597,700,830,899

Benefits for Staff Relative to Collective Bargaining Agreements

	OBJECT	COVERED	NOT COVERED	TOTAL
10 General Fund				
	211 Medical Insurance			
	212 Dental Insurance			
	215 Eye Care Insurance			
	216 Prescription Insurance			
	271 Self-Insurance Medical Benefits	6,994,855.45	920,323.90	7,915,179.35
	272 Self-Insurance Dental Benefits	440,604.13	61,358.60	501,962.73
	275 Self-Insurance Eye Care Benefits	79,288.99	10,828.55	90,117.54
	276 Self-Insurance Prescription Benefits			
	FUND TOTAL	\$7,514,748.57	\$992,511.05	\$8,507,259.62
50 Enterprise Fund				
	211 Medical Insurance			
	212 Dental Insurance			
	215 Eye Care Insurance			
	216 Prescription Insurance			
	271 Self-Insurance Medical Benefits	16,248.96	122,869.28	139,118.24
	272 Self-Insurance Dental Benefits	984.96	7,032.96	8,017.92
	275 Self-Insurance Eye Care Benefits	181.68	1,089.76	1,271.44
	276 Self-Insurance Prescription Benefits			
	FUND TOTAL	\$17,415.60	\$130,992.00	\$148,407.60
60 Internal Service Fund	No Self Insurance data to report			
	211 Medical Insurance			
	212 Dental Insurance			
	215 Eye Care Insurance			
	216 Prescription Insurance			
	271 Self-Insurance Medical Benefits			
	272 Self-Insurance Dental Benefits			
	275 Self-Insurance Eye Care Benefits			
	276 Self-Insurance Prescription Benefits			
	FUND TOTAL			
Total of All Funds		\$7,532,164.17	\$1,123,503.05	\$8,655,667.22

LEA : 123467103 Souderton Area SD

Printed 11/30/2022 3:21:46 PM

Function	Special Education (Prior Year)	Nonspecial Education (Prior Year)	Total (Prior Year)	Special Education (Current Year)	Nonspecial Education (Current Year)	Total (Current Year)
2120 Guidance Services	421,230.06	1,963,991.14	2,385,221.20	452,356.69	2,012,802.40	2,465,159.09
2140 Psychological Services	215,526.10	1,004,893.52	1,220,419.62	246,801.36	1,098,165.16	1,344,966.52
2150 Speech Pathology and Audiology Services						
2160 Social Work Services	246,796.25	246,796.25	493,592.50	255,884.51	255,884.50	511,769.01
2260 Instruction and Curriculum Development Services	239,715.69	1,400,803.50	1,640,519.19	219,033.95	974,611.55	1,193,645.50
2350 Legal and Accounting Services	21,131.58	98,526.27	119,657.85	24,507.13	109,046.73	133,553.86
2420 Medical Services		243,616.91	243,616.91		298,841.27	298,841.27
2440 Nursing Services	200,415.89	1,008,054.60	1,208,470.49	235,333.65	1,047,138.58	1,282,472.23
2700 Student Transportation Services	2,658,864.48	4,576,612.73	7,235,477.21	3,130,809.72	5,011,519.52	8,142,329.24
Total	\$4,003,680.05	\$10,543,294.92	\$14,546,974.97	\$4,564,727.01	\$10,808,009.71	\$15,372,736.72

LEA : 123467103 Souderton Area SD

Printed 11/30/2022 3:21:53 PM

(PRINCIPAL AMOUNTS ONLY)

GOVERNMENTAL FUNDS/ ACTIVITIES

	Short-Term Borrowing	General Obligation Bonds/Notes	Authority Building Obligations	OLTD, Ext Term Fin, Leases	Other Post- Employment Benefits (OPEB)	Compensated Absences	Net Pension Liability	Total
1. Debt at Beginning of Fiscal Year		35,215,000.00			13,703,545.00	2,921,571.00	187,178,524.00	239,018,640.00
2. Additional Debt Incurred During Year		42,010,000.00		70,899.00	1,131,188.00	50,344.00		43,262,431.00
3. Retirements and Repayments		8,645,000.00		31,426.00		106,983.00	27,398,710.00	36,182,119.00
4. Debt at End of Fiscal Year		68,580,000.00		39,473.00	14,834,733.00	2,864,932.00	159,779,814.00	246,098,952.00
5. Accreted Interest at End Of Fiscal Year								
6. Total Debt and Accreted Interest		68,580,000.00		39,473.00	14,834,733.00	2,864,932.00	159,779,814.00	246,098,952.00
7. Current Portion P&I - Due within 1 year		11,317,476.13		31,558.00		196,281.00		11,545,315.13
8. Interest Paid during current fiscal year		1,357,536.95						1,357,536.95

(PRINCIPAL AMOUNTS ONLY)

PROPRIETARY FUNDS

	Short-Term Borrowing	General Obligation Bonds/Notes	Authority Building Obligations	OLTD, Ext Term Fin, Leases	Other Post- Employment Benefits (OPEB)	Compensated Absences	Net Pension Liability	Total
1. Debt at Beginning of Fiscal Year					155,898.00		3,078,267.00	3,234,165.00
2. Additional Debt Incurred During Year					13,228.00			13,228.00
3. Retirements and Repayments					4,390.00		341,226.00	345,616.00
4. Debt at End of Fiscal Year					164,736.00		2,737,041.00	2,901,777.00
5. Accreted Interest at End Of Fiscal Year								
6. Total Debt and Accreted Interest					164,736.00		2,737,041.00	2,901,777.00
7. Current Portion P&I - Due within 1 year								
8. Interest Paid during current fiscal year								

LEA : 123467103 Souderton Area SD

Printed 11/30/2022 3:21:53 PM

Total Principal and Interest Payments Made by Your School - All Funds

Function	Fund		Principal (910)	Principal (920)	Interest (830)	Total (Principal +Interest)	Misc Other Uses (990)
5110	10	General Fund	8,645,000.00		1,357,536.96	10,002,536.96	
5110	20	Special Revenue Funds					
5110	30	Capital Projects Funds					
5110	40	Debt Service Fund					
5110	90	Permanent Fund					
5120	10	General Fund					
5120	20	Special Revenue Funds					
5120	30	Capital Projects Funds					
5120	40	Debt Service Fund					
5140	10	General Fund	31,426.22		260.02	31,686.24	
5140	20	Special Revenue Funds					
5140	30	Capital Projects Funds					
5140	40	Debt Service Fund					
5140	90	Permanent Fund					
Total Debt Payments - Governmental Funds			\$8,676,426.22		\$1,357,796.98	\$10,034,223.20	

Function	Fund		Principal (910)	Principal (920)	Interest (830)	Total (Principal +Interest)
5110	50	Enterprise Fund				
5110	60	Internal Service Fund				
5120	50	Enterprise Fund				
5120	60	Internal Service Fund				
5140	50	Enterprise Fund				
5140	60	Internal Service Fund				
Total Debt Payments - Proprietary Funds						

LEA : 123467103 Souderton Area SD

<u>Debt Details</u> <u>Governmental Funds/ Activities</u>		Principal Amounts Only				Current Portion Due Within One Year (Principal and Interest)	Interest Paid During Fiscal Year
Debt Category	Debt Issue Date (MM/YYYY)	Debt at Beginning of Fiscal Year	Additions	Reductions / Repayments	Debt at End of Fiscal Year		
General Obligation Bonds/Notes – CIB	06/2022		33,100,000.00		33,100,000.00	1,041,108.00	
General Obligation Bonds/Notes – CIB	07/2021		8,910,000.00		8,910,000.00	303,100.00	194,625.69
General Obligation Bonds/Notes – CIB	11/2019	8,220,000.00		10,000.00	8,210,000.00	420,000.00	410,500.00
General Obligation Bonds/Notes – CIB	01/2017	14,570,000.00		3,500,000.00	11,070,000.00	3,826,550.00	544,612.50
General Obligation Bonds/Notes – CIB	01/2015	2,125,000.00		695,000.00	1,430,000.00	728,352.50	37,705.00
General Obligation Bonds/Notes – CIB	04/2015	1,105,000.00		1,105,000.00			11,050.00
General Obligation Bonds/Notes – CIB	01/2014	9,195,000.00		3,335,000.00	5,860,000.00	4,998,365.63	159,043.76
Compensated Absences		2,921,571.00	50,344.00	106,983.00	2,864,932.00	196,281.00	
Other Post-Employment Benefits (OPEB)		13,703,545.00	1,131,188.00		14,834,733.00		
Net Pension Liability		187,178,524.00		27,398,710.00	159,779,814.00		
Leases			70,899.00	31,426.00	39,473.00	31,558.00	
Totals for Debt Entered:		\$239,018,640.00	\$43,262,431.00	\$36,182,119.00	\$246,098,952.00	\$11,545,315.13	\$1,357,536.95

<u>Bond Details</u> <u>Proprietary Funds</u>		Principal Amounts Only				Current Portion Due Within One Year (Principal and Interest)	Interest Paid During Fiscal Year
Debt Category	Debt Issue Date (MM/YYYY)	Debt at Beginning of Fiscal Year	Additions	Reductions / Repayments	Debt at End of Fiscal Year		
Other Post-Employment Benefits (OPEB)		155,898.00	13,228.00	4,390.00	164,736.00		
Net Pension Liability		3,078,267.00		341,226.00	2,737,041.00		
Totals for Debt Entered:		\$3,234,165.00	\$13,228.00	\$345,616.00	\$2,901,777.00		

LEA : 123467103 Souderton Area SD

Printed 11/30/2022 3:21:59 PM

General Fund (10)

Section 1: Tuition/Purchased Services as Reported within Expenditure Detail	Amount
Tuition Reported in General Fund Expenditures 1000-560	11,141,490.42
Purchased Services in General Fund Expenditures 1000-594 and 1000-597	2,312.19
Section 1 Total	\$11,143,802.61

Section 2: Tuition Paid to Institution Types During Fiscal Year	Tuition Paid For Nonspecial Education	Tuition Paid For Special Education	Total
1 1306 Institutions			
2 Institutionalized Children's Programs		2,312.19	2,312.19
3 Juveniles Incarcerated in Adult Facilities			
4 Residential Treatment Facilities		485,208.00	485,208.00
5 Other Local Education Agencies	453,673.16	225.00	453,898.16
6 Brick and Mortar Charter Schools	2,133,487.97	1,025,724.46	3,159,212.43
7 Cyber Charter Schools	844,150.37	505,194.30	1,349,344.67
8 Career and Technology Centers	1,746,643.98	12,300.00	1,758,943.98
9 Approved Private Schools		326,227.94	326,227.94
10 PA Chartered Schools for the Deaf and Blind			
11 Private Residential Rehabilitative Institutions	395,722.13	1,349,023.36	1,744,745.49
12 Juvenile Detention Centers			
13 Special Program Jointures			
14 Other Tuition Not Included Elsewhere In This Section	9,447.00	1,854,462.75	1,863,909.75
Section 2 Total	\$5,583,124.61	\$5,560,678.00	\$11,143,802.61

LEA : 123467103 Souderton Area SD

Printed 11/30/2022 3:22:12 PM

Food Service / Cafeteria Operations Fund (51)

3000 Operation of Non-Instructional Services		Total
100	<u>Personnel Services – Salaries</u>	
100	Personnel Services – Salaries	574,804.41
Total Personnel Services – Salaries		\$574,804.41
200	<u>Personnel Services – Employee Benefits</u>	
220	Social Security Contributions	42,171.14
230	PSERS Retirement Contributions	166,022.86
250	Unemployment Compensation	280.14
260	Workers' Compensation	3,116.00
270	Group Insurance – Self-Insurance	148,407.60
280	Other Post-Employment Benefits (OPEB)	1,473.00
Total Personnel Services – Employee Benefits		\$361,470.74
300	<u>Purchased Professional and Technical Services</u>	
330	Other Professional Services	9,682.52
340	Technical Services	8,225.00
Total Purchased Professional and Technical Services		\$17,907.52
400	<u>Purchased Property Services</u>	
430	Repairs and Maintenance Services	65,659.76
Total Purchased Property Services		\$65,659.76
500	<u>Other Purchased Services</u>	
530	Communications	777.91
550	Printing and Binding	102.50
570	Food Service Management	1,396,310.26
580	Travel	233.70
Total Other Purchased Services		\$1,397,424.37
600	<u>Supplies</u>	
610	General Supplies	8,555.77
630	Food	248,045.94
650	Supplies & Fees – Technology Related	2,250.00
Total Supplies		\$258,851.71
700	<u>Property</u>	
740	Depreciation	55,019.17
Total Property		\$55,019.17
800	<u>Other Objects</u>	
810	Dues and Fees	1,185.00
Total Other Objects		\$1,185.00
Total 3000 Operation of Non-Instructional Services		\$2,732,322.68

LEA : 123467103 Souderton Area SD

Printed 11/30/2022 3:22:12 PM

Food Service / Cafeteria Operations Fund (51)

3100 Food Services	<u>Elementary</u>	<u>Secondary</u>	<u>Federal</u>	<u>Total</u>
100 <u>Personnel Services – Salaries</u>				
100 Personnel Services – Salaries				574,804.41
Total Personnel Services – Salaries				\$574,804.41
200 <u>Personnel Services – Employee Benefits</u>				
220 Social Security Contributions				42,171.14
230 PSERS Retirement Contributions				166,022.86
250 Unemployment Compensation				280.14
260 Workers' Compensation				3,116.00
270 Group Insurance – Self-Insurance				148,407.60
280 Other Post-Employment Benefits (OPEB)				1,473.00
Total Personnel Services – Employee Benefits				\$361,470.74
300 <u>Purchased Professional and Technical Services</u>				
330 Other Professional Services				9,682.52
340 Technical Services				8,225.00
Total Purchased Professional and Technical Services				\$17,907.52
400 <u>Purchased Property Services</u>				
430 Repairs and Maintenance Services				65,659.76
Total Purchased Property Services				\$65,659.76
500 <u>Other Purchased Services</u>				
530 Communications				777.91
550 Printing and Binding				102.50
570 Food Service Management				1,396,310.26
580 Travel				233.70
Total Other Purchased Services				\$1,397,424.37
600 <u>Supplies</u>				
610 General Supplies				8,555.77
630 Food				248,045.94
650 Supplies & Fees – Technology Related				2,250.00
Total Supplies				\$258,851.71
700 <u>Property</u>				
740 Depreciation				55,019.17
Total Property				\$55,019.17
800 <u>Other Objects</u>				
810 Dues and Fees				1,185.00
Total Other Objects				\$1,185.00
Total 3100 Food Services				\$2,732,322.68

LEA : 123467103 Souderton Area SD

Printed 11/30/2022 3:22:08 PM

Internal Service Fund (60)

1000 Instruction		<u>Total</u>
200 <u>Personnel Services – Employee Benefits</u>		
270 Group Insurance – Self-Insurance		11,329,972.28
Total Personnel Services – Employee Benefits		\$11,329,972.28
500 <u>Other Purchased Services</u>		
520 Insurance – General		1,085,811.19
Total Other Purchased Services		\$1,085,811.19
800 <u>Other Objects</u>		
810 Dues and Fees		390,301.22
Total Other Objects		\$390,301.22
Total 1000 Instruction		\$12,806,084.69

LEA : 123467103 Souderton Area SD

Printed 11/30/2022 3:22:08 PM

Internal Service Fund (60)

1100 Regular Programs – Elementary / Secondary

Elementary Secondary Federal Total

200 <u>Personnel Services – Employee Benefits</u>				
270 Group Insurance – Self-Insurance				11,329,972.28
Total Personnel Services – Employee Benefits				\$11,329,972.28
500 <u>Other Purchased Services</u>				
520 Insurance – General				1,085,811.19
Total Other Purchased Services				\$1,085,811.19
800 <u>Other Objects</u>				
810 Dues and Fees				390,301.22
Total Other Objects				\$390,301.22
Total 1100 Regular Programs – Elementary / Secondary				\$12,806,084.69

LEA : 123467103 Souderton Area SD

Printed 11/30/2022 3:22:08 PM

Internal Service Fund (60)

1110 Regular Programs	<u>Elementary</u>	<u>Secondary</u>	<u>Federal</u>	<u>Total</u>
200 <u>Personnel Services – Employee Benefits</u>				
270 Group Insurance – Self-Insurance				11,329,972.28
Total Personnel Services – Employee Benefits				\$11,329,972.28
500 <u>Other Purchased Services</u>				
520 Insurance – General				1,085,811.19
Total Other Purchased Services				\$1,085,811.19
800 <u>Other Objects</u>				
810 Dues and Fees				390,301.22
Total Other Objects				\$390,301.22
Total 1110 Regular Programs				\$12,806,084.69

	<u>Food Service(51)</u>	<u>Child Care Operations(52)</u>	<u>Other Enterprise(58)</u>	<u>Internal Service(60)</u>	<u>Total</u>
1000 <u>Instruction</u>					
1100 Regular Programs - Elementary / Secondary				12,806,084.69	12,806,084.69
Total Instruction				\$12,806,084.69	\$12,806,084.69
3000 <u>Operation of Non-Instructional Services</u>					
3100 Food Services	2,732,322.68				2,732,322.68
Total Operation of Non-Instructional Services	\$2,732,322.68				\$2,732,322.68
TOTAL ACTUAL EXPENDITURES & OTHER FINANCING USES	\$2,732,322.68			\$12,806,084.69	\$15,538,407.37

LEA : 123467103 Souderton Area SD

Printed 11/30/2022 3:22:37 PM

Fund	School	School Number	Local Personnel	Local Nonpersonnel	State Personnel	State Nonpersonnel	Federal Personnel	Federal Nonpersonnel	Total	Explanation
10										
	E M Crouthamel El Sch	3357	5,479,676.74	2,406,478.66	10,029.17	28,300.02	291,536.77	72,421.43	8,288,442.79	
	Franconia El Sch	3266	6,214,813.72	3,080,336.12	12,947.87	36,535.94	298,611.35	91,963.25	9,735,208.25	
	Indian Crest MS	8062	6,571,893.63	3,234,771.30	13,506.77	38,113.03	172,564.98	95,932.88	10,126,782.59	
	Indian Valley MS	4722	6,705,508.52	3,398,826.59	14,096.72	39,777.73	180,102.30	100,123.06	10,438,434.92	
	Oak Ridge El Sch	7262	7,029,558.37	3,751,607.75	15,556.08	43,895.69	198,747.25	110,488.22	11,149,853.36	
	Salford Hills El Sch	8282	6,361,172.29	2,768,973.33	11,674.82	32,943.67	321,118.50	82,921.30	9,578,803.91	
	Souderton Area SHS	3354	10,769,599.10	5,216,401.71	21,082.99	59,491.37	269,360.04	149,743.51	16,485,678.72	
	Vernfield El Sch	7752	10,136,343.35	5,643,615.62	23,722.24	66,938.74	303,079.64	168,489.02	16,342,188.61	
	West Broad Street El Sch	4900	28,433,044.45	16,406,212.15	66,260.81	186,972.87	846,560.14	470,622.47	46,409,672.89	
Total			87,701,610.17	45,907,223.23	188,877.47	532,969.06	2,881,680.97	1,342,705.14	138,555,066.04	