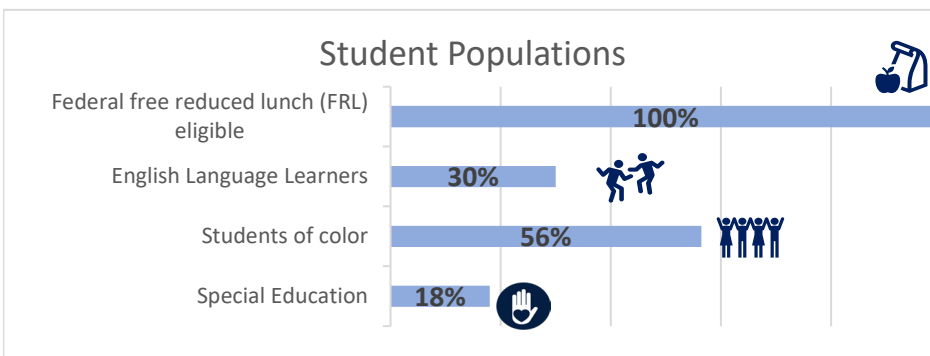
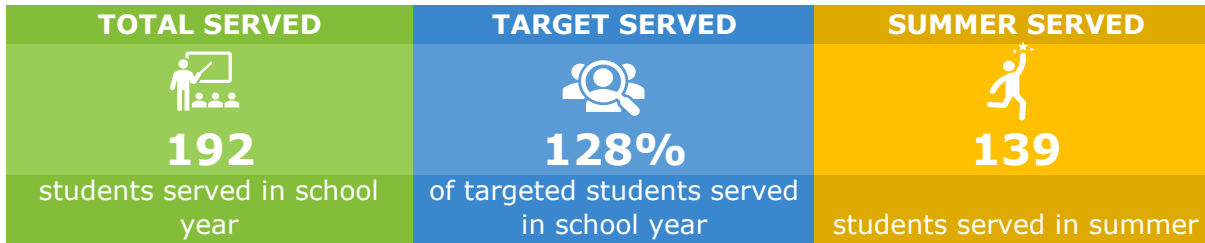


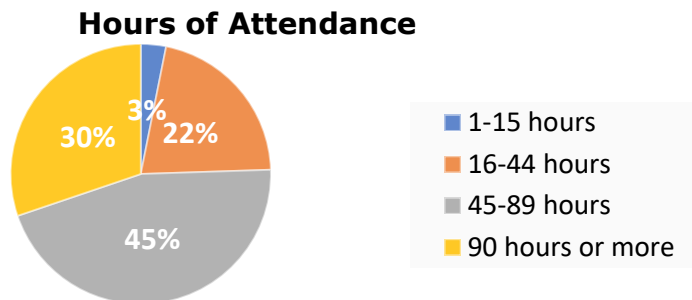
# Beaverton School District 21st Century Community Learning Grant Evaluation Brief: Our 2021-2022 Year in Review

## Who Do We Serve?

**Beaverton CAFE** served **192** students at **2** centers during the school year which was **128%** of their target. Additionally, **135** students were served over the summer. **30%** of students served were regular attendees and all students were eligible for FRL.



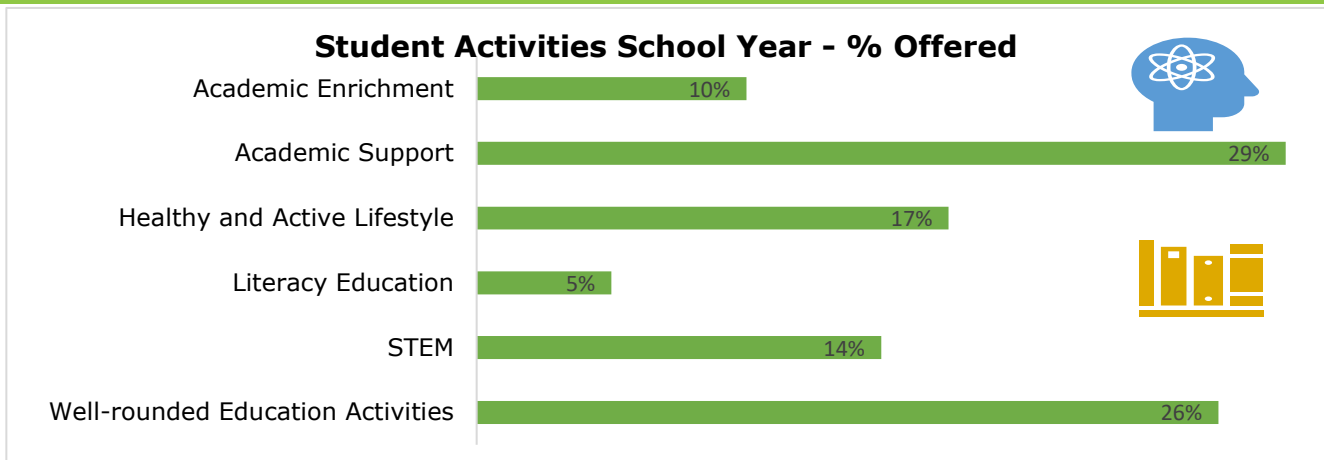
**21st CCLC programs provide essential supports to students who are often underserved in order to help close educational opportunity and achievement gaps.**



**Regular Attendees**  
  
**30%**  
or more.

\*Regular attendees refers to students who attended 90 hours or more.

## STEM and Literacy were the the most offered student activities




**PARTNERS**

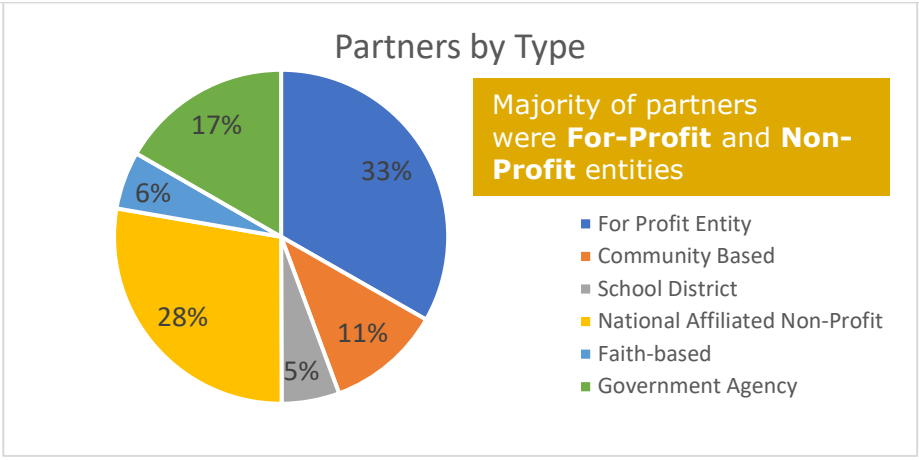


**18**  
local partners

**PARTNER SUPPORTS**

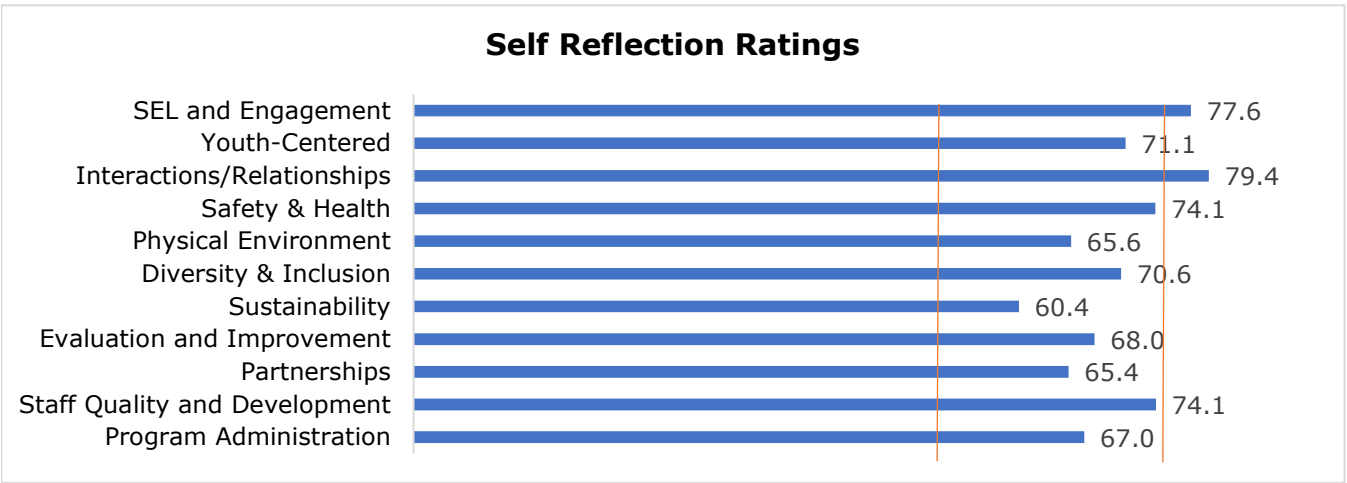


**89%**  
provided programming



## How Well Are We Meeting Oregon 21st CCLC Centers' Quality Standards?

Each year, we conduct a self-reflection of our program and assess the program relative to Oregon standards of best practice for after school programs, organized around 11 categories. Indicators within each category are rated on a scale of 1=Does Not Meet, 2=Approaching Meeting, 3=Meeting, and 4=Exceeding. Percentage of total points are shown with 75 equal to meeting expectations.



## What Impact are We Having?



HOMEWORK (2020-21)	Language Arts	Math
<b>56%</b>	<b>NA</b>	<b>NA</b>
students improved homework completion	students improved academically	students improved academically

