



**St. Louis Park  
Public Schools**

# **Elementary Family Handbook 2022-23**



Updated: December 14, 2022 7:24 AM

**AQUILA • PARK SPANISH IMMERSION • PETER HOBART • SUSAN LINDGREN  
ELEMENTARY SCHOOLS**



# Table of Contents

2020-2025 Strategic Plan .....	3-4
District Contacts - School Board .....	5
District Contacts - Administrative Cabinet.....	6
Elementary School Contacts.....	7
School Nutrition .....	8
<b>District Policies</b>	
Attendance.....	9
Behavior and discipline.....	9
Educational records.....	9
Field trips .....	9
Student rights and responsibilities.....	9-10
Technology .....	10
Transportation.....	10
Wellness & Student Services.....	11
Community Education & Youth Enrichment Programs .....	11
Communication of School Closings.....	12
2022-23 Calendar at a Glance.....	13

**IMPORTANT NOTE:** The 2022-23 Elementary Family Handbook was produced August 2022. The policies contained in this handbook were current at the time of production and may be revised by the School Board at their discretion. For the most current version of each School Board Policy, refer to our website at [slpschools.org/about/school-board](https://slpschools.org/about/school-board).



# St. Louis Park Public Schools

# 2020-25 Strategic Plan for Racial Equity Transformation

## Mission Statement

St. Louis Park Public Schools sees, inspires, and empowers each learner to live their brilliance in an environment that centers student voice and experience to create racially equitable learning that energizes and enhances the spirit of our community.

## Vision Statement

St. Louis Park Public Schools – Where students are seen and valued and become their best selves as racially conscious, globally minded contributors to society.

## Core Values

We believe in:

- > **The brilliance of ourselves and others.**  
Everyone has the capacity and responsibility to foster the growth and brilliance of others.
- > **Authentic community engagement.**  
Engaging and supporting our employees, families, and communities will enhance the healthy development of each learner.
- > **High expectations.**  
Instilling and upholding high expectations empowers students and staff to higher levels of achievement.
- > **Collective responsibility.**  
Embodying the collective and urgent responsibility of anti-racist practices enriches a work and learning environment and community.
- > **Persistent effort.**  
Through persistent effort we will create anti-racist schools and academically successful learners.
- > **Racial consciousness and cultural competence.**  
Racial consciousness and cultural competence are essential to each person's ability to be a catalyst for change.
- > **Advocacy for equity.**  
Everyone has equal intrinsic worth and we will advocate for the historically marginalized.



## About the 2020-25 Strategic Plan for Racial Equity Transformation

This strategic plan was a labor of love and born out of the desire to create a better tomorrow for all learners in St. Louis Park Public Schools that is not predictable by Race. District Administration custom-designed a process that combined an adaptive approach to center the Core Planning Team Members' thoughts, feelings, and purpose related to racial equity with technical execution. The group was focused on answering the following question... What is needed for the thorough and dramatic change of Racial Equity Transformation to occur in St. Louis Park Public Schools; where current, racist systems are abolished to build new, anti-racist systems and structures with all community stakeholders to create student-centered schools with inspired and empowered outcomes regardless of race and accountability measures for students and adults by the end of 2025?



# 2020-25 Strategic Plan for Racial Equity Transformation

## 2022-2023 Priority Work

**Sustain and deepen culturally relevant literacy development through the Collaborative Action Research for Equity (CARE) Team process.**

### Measurement areas

**Identity** - students discover who they are, who others say they are, and who they desire to be

**Skill** - students demonstrate proficiency in reading (decoding, vocabulary, phonics, etc.)

**Intellectualism** - citing textual evidence and writing

**Criticality** - critical thinking, students understand power, humanity, inequities, oppression, anti-sexism and anti-racism

**Joy** - students express happiness and a love for learning

**Develop and implement authentic internal communication (loop) strategies that energizes and enhances the spirit of our community.**

### Measurement areas

**Knowledge** - Staff express confidence in knowing what is occurring in the district connected to our strategic direction

**Agency** - Staff express confidence in knowing how to provide feedback and engage in critical self-reflection to learn more about action connected to our strategic direction

**Advocacy** - Staff express support and confidence in providing clear and accurate information to students, other staff, families and community about action connected to our strategic direction



**St. Louis Park  
Public Schools**

Independent School District 283  
6425 West 33<sup>rd</sup> Street  
St. Louis Park, MN 55426  
(952) 928-6000  
[www.slpschools.org](http://www.slpschools.org)

For more information about St. Louis Park Public Schools,  
email [communications@slpschools.org](mailto:communications@slpschools.org).

Revised December 2022

# District Contacts

## 2022 SCHOOL BOARD



Pictured from left to right  
 Abdihakim Ibrahim, Director  
 C. Colin Cox, Clerk  
 Heather Wilsey, Vice Chair  
 Ken Morrison, Treasurer  
 Anne Casey, Chair  
 Virginia Mancini, Director  
 Sarah Davis, Director

If you prefer to contact the entire School Board, instead of individual members, please use [schoolboard@slpschools.org](mailto:schoolboard@slpschools.org).

### About the School Board

The Board of Education is made up of seven school district residents elected at-large to serve terms of four years. The board is the governing body responsible for setting direction and providing support for quality educational opportunities for all students served by the St. Louis Park School District. Further, the board is responsible for providing resources necessary to pursue its goals according to its policies; and monitoring district performance to see that results are consistent with goals and policies.

### 2022-23 School Board Meetings

Note: When meetings are held in person, they start at 6:30 p.m. and are located in Room C350 of the High School unless otherwise noted. If attending School Board Meetings, please enter at either the circle doors or the new student entrance along West 33rd Street. During the COVID-19 pandemic some meetings will be held virtually.

August 10, 2022	Business Meeting
September 13, 2022	Study Session
September 27, 2022	Business Meeting
October 11, 2022	Study Session
October 25, 2022	Business Meeting
November 9, 2022	Study Session
November 22, 2022	Business Meeting
December 13, 2022	Study Session
January 10, 2023	Business Meeting
January 24, 2023	Study Session
February 14, 2023	Business Meeting
February 28, 2023	Study Session
March 14, 2023	Business Meeting
March 28, 2023	Study Session
April 11, 2023	Business Meeting
April 25, 2023	Study Session
May 9, 2023	Business Meeting
May 23, 2023	Study Session
June 13, 2023	Business Meeting
June 27, 2023	Study Session

### Communicate with the School Board

The school board is grateful for the St. Louis Park community members who join together to care about the welfare of all students, their education and future. Community members are invited to share ideas and opinions with the school board in the following ways:

#### School Board Message Line

Please call the School Board Message Line at 952-928-6040 with your questions or comments. All school board members will hear your call; one board member will return your call. Please be sure to clearly pronounce your name and provide your phone number.

#### Open Forum

The school board typically has an Open Forum at the second meeting of each month beginning at 6:30 p.m.

Those wishing to speak to the school board are requested to sign-in. Comments are limited to three minutes per person about a topic, not about an individual. Comments of a disrespectful or personal nature directed at an individual by name or inference will not be permitted. Personnel concerns should be directed first to the individual, then to the principal or program director, superintendent and finally, in writing, to the school board.

### Postal Mail and Email

You may also send your questions or comments to the school board in writing via postal mail or email. Postal mail should be directed as follows:  
 School Board St. Louis Park Public Schools  
 6425 West 33rd Street  
 St. Louis Park, MN 55426

If you would like to email your questions or comments to the School Board, email addresses are listed above. Please note: In order to avoid violation of the state's open meeting law, the school district email policy prohibits substantive replies to email. Please be assured that board members will read your email message and take your comments into consideration.

### Listening Sessions

The school board will occasionally conduct Listening Sessions where one or two board members will hear your comments and engage in a discussion, as appropriate. Typically, four or more listening sessions are scheduled throughout the school year. The dates, times and locations of upcoming listening sessions are announced at school board meetings and promoted on the school district web page ([www.slpschools.org](http://www.slpschools.org)). Respectful time limits will be set and comments of a disrespectful or personal nature directed at an individual by name or inference will not be permitted.

# District Contacts

## ADMINISTRATIVE CABINET

### Superintendent

Astein Osei  
Phone: 952-928-6003  
Email: osei.astein@slpschools.org

### Director of Business Services

Patricia Magnuson  
Phone: 952-928-6009  
Email: magnuson.patricia@slpschools.org

### Director of Student Services

Tami Reynolds  
Phone: 952-928-6068  
Email: reynolds.tami@slpschools.org

### Director of Human Resources

Richard Kreyer  
Phone: 952-928-6067  
Email: kreyer.richard@slpschools.org

### Director of Teaching, Learning & Leadership

Dr. Patrick Duffy  
Phone: 952-928-6072  
Email: duffy.patrick@slpschools.org

### Director of Community Education

Patrice Howard  
Phone: 952-928-6063  
Email: howard.patrice@slpschools.org

### Director of Communications

Rachel Hicks  
Phone: 952-928-6064  
Email: hicks.rachel@slpschools.org

### Director of Information Services

Tom Marble, CETL  
Phone: 952-928-6030  
Email: marble.tom@slpschools.org

### Director of Assessment, Research and Evaluation

Dr. Silvy Un Lafayette  
Phone: 952-928-6074  
Email: lafayette.silvy@slpschools.org

### Principal on Special Assignment

Freida Bailey  
Phone: 952-928-6062  
Email: bailey.freida@slpschools.org

### Athletic Director

Andy Ewald  
Phone: 952-928-6118  
Email: ewald.andy@slpschools.org

### Executive Leadership Partner

Flower Krutina  
Phone: 952-928-6001  
Email: krutina.flower@slpschools.org

The District's administrative departments are temporarily located at several different buildings within the District.

The following departments are located at St. Louis Park High School: Assessment, Research & Evaluation, Athletics, Communications, Curriculum & Instruction, Enrollment Center, School Nutrition, Superintendent's Office and Technology.

The following departments are located at Lenox Community Center: Business Services, Human Resources and Student Services.



St. Louis Park  
Public Schools

## Stay Connected with St. Louis Park Public Schools!

**Facebook:** @stlouisparkpublicschools

**Twitter:** @SLPublicSchools

**Instagram:** @st.louisparkpublicschools

**Web:** [www.slpschools.org](http://www.slpschools.org)

[www.gopark.org](http://www.gopark.org) (athletics)



# School Contacts



## Aquila Elementary School

8500 W. 31st Street  
St. Louis Park, MN 55426

**Phone:**

952-928-6500

**Attendance:**

952-928-6507

**Fax:**

952-928-6466

**Health Office:**

952-928-6505

**School Nutrition:**

952-928-6516

**Bus (Transportation):**

952-928-6052

**Website:**

[aq.slpschools.org](http://aq.slpschools.org)



Ms. María Graver  
Principal



Ms. Olivia Tolzin  
Assistant Principal



## Park Spanish Immersion Elementary School

9400 Cedar Lake Rd.  
St. Louis Park, MN 55426

**Phone:**

952-928-6555

**Attendance:**

952-928-6570

**Fax:**

952-928-6556

**Health Office:**

952-928-6554

**School Nutrition:**

952-928-6567

**Bus (Transportation):**

952-928-6052

**Website:**

[psi.slpschools.org](http://psi.slpschools.org)



Dr. Corey Maslowski  
Principal



Ms. Kelsey Clark  
Elementary Support Supervisor



## Peter Hobart Elementary School

6500 W. 26th Street  
St. Louis Park, MN 55426

**Phone:**

952-928-6600

**Attendance:**

952-928-6604

**Fax:**

952-928-6643

**Health Office:**

952-928-6605

**School Nutrition:**

952-928-6598

**Bus (Transportation):**

952-928-6052

**Website:**

[ph.slpschools.org](http://ph.slpschools.org)



Ms. Kari Schwietering  
Principal



Mr. Chris Weaver  
Elementary Support Supervisor



## Susan Lindgren Elementary School

4801 W. 41st Street  
St. Louis Park, MN 55416

**Phone:**

952-928-6700

**Attendance:**

952-928-6693

**Fax:**

952-928-6713

**Health Office:**

952-928-6693

**School Nutrition:**

952-928-6704

**Bus (Transportation):**

952-928-6052

**Website:**

[sl.slpschools.org](http://sl.slpschools.org)



Mr. Clarence Pollock  
Principal



Mr. Arsenio Richardson  
Elementary Support Supervisor

### Elementary School Start/End Times

Start: 7:45 a.m.

End: 2:15 p.m.

# School Nutrition

[CLICK HERE](#) TO LEARN MORE ABOUT SCHOOL NUTRITION.

## School Nutrition

The St. Louis Park Public Schools Department of School Nutrition strives to ensure that each student receives healthy, nutritious, and affordable meals from professional and friendly staff.

We know that when kids eat well, they are better learners and are more attentive in class. Our goal at St. Louis Park Public Schools is to serve our students, teachers, district, and community members a well-balanced, plant-strong diet.

For general inquiries, please email us at [schoolnutrition@slpschools.org](mailto:schoolnutrition@slpschools.org) or call us at 952-928-6146.

Are you a parent/guardian looking to add funds to your student's account so they can purchase meals or a la carte items? Login to either Wordware or the PowerSchool Parent Portal.

## Lunch Menus Online

Lunch menus for each school can now be viewed online. [Click here](#) to view menus.



St. Louis Park School District 283

Welcome! It's simple to get started:

What is the name of your school?

Find a school...

Which menu would you like to view?

Find a menu...

Go

## Apply for Educational Benefits (Free & Reduced Priced Meals)

We encourage all families to fill out an application for educational benefits for the 2022-23 school year.

For the 2022-23 school year, USDA rules for school meals will return to pre-COVID guidelines. This means that families will need to pay for student meals unless they apply (see below) and qualify for educational benefits. If families complete the form and qualify, your child will be eligible for free or reduced priced meals and other educational benefits (described below).

### HOW TO APPLY

The application can be filled out in a number of different ways including online through your Wordware or PowerSchool account, or by filling out a paper copy.

Click a language below to download a paper copy in your preferred language: [English](#) | [Español](#) | [Soomaali](#)

If you need assistance filling out an Application for Educational Benefits, contact the School Nutrition Department at 952-928-6146.

If you decide to fill out a paper copy, return the completed form to:

St. Louis Park Public Schools  
6425 W. 33rd St.  
Attn: School Nutrition  
St. Louis Park, MN 55426

Families can also attach a completed form in an email to [woelffer.jodie@slpschools.org](mailto:woelffer.jodie@slpschools.org).

### 6 REASONS TO COMPLETE AN APPLICATION FOR EDUCATIONAL BENEFITS



**Internet Access**  
You may be eligible for discounted internet access services.



**School Funding**  
Help maintain funding for student programs and services.



**College Application Fees**  
You may receive discounted rates on fees associated with applying for college.



**Sports & Activities**  
May be able to participate in sports and activities for free or at a discount.



**AP Tests**  
Receive reduced registration fees for AP tests.



**School Meals**  
Receive free or reduced prices on delicious and nutritious meals.





# District Policies

CLICK ON A POLICY TO VIEW IT ON THE DISTRICT'S WEBSITE OR [CLICK HERE](#) TO VIEW ALL POLICIES.

## Attendance

### [POLICY 503 STUDENT ATTENDANCE](#)

The school board believes that regular school attendance is directly related to success in academic work, benefits students socially, provides opportunities for important communications between teachers and students and establishes regular habits of dependability important to the future of the student. The purpose of this policy is to encourage regular school attendance. It is intended to be positive and not punitive.

This policy also recognizes that class attendance is a joint responsibility to be shared by the student, parent or guardian, teacher and administrators. This policy will assist students in attending class. This policy is in accordance with the Minnesota Compulsory Instruction Law, Minn. Stat. § 120.A.22.

## Behavior and discipline

### [POLICY 506 - DISCIPLINE](#)

The purpose of this policy is to ensure that students are aware of and comply with the school district's expectations for student conduct. Such compliance will enhance the school district's ability to maintain discipline and ensure that there is no interference with the educational process. The school district will take appropriate disciplinary action when students fail to adhere to the Code of Student Conduct established by this policy. We urge each parent or guardian and each student to review the material carefully and refer any questions to school staff members.

### [POLICY 506 - PROCEDURE](#)

### [514 - BULLYING PROHIBITION](#)

A safe and civil environment is needed for students to learn and attain high academic standards and to promote healthy human relationships. Bullying, like other violent or disruptive behavior, is conduct that interferes with a student's ability to learn and/or a teacher's ability to educate students in a safe environment. The school district

cannot monitor the activities of students at all times and eliminate all incidents of bullying between students, particularly when students are not under the direct supervision of school personnel. However, to the extent such conduct affects the educational environment of the school district and the rights and welfare of its students and is within the control of the school district in its normal operations, the school district intends to prevent bullying and to take action to investigate, respond to, and to remediate and discipline for those acts of bullying which have not been successfully prevented. The purpose of this policy is to assist the school district in its goal of preventing and responding to acts of bullying, intimidation, violence, reprisal, retaliation, and other similar disruptive and detrimental behavior.

### [POLICY 413 - HARASSMENT AND VIOLENCE](#)

The purpose of this policy is to help create a safe and nurturing environment that energizes the spirit of students and employees and to maintain a learning and working environment that is free from harassment and violence on the basis of race, color, creed, religion, national origin, sex, age, marital status, familial status, status with regard to public assistance, sexual orientation, gender identity and expression, or disability.

### [POLICY 501 - WEAPONS](#)

The purpose of this policy is to assure a safe school environment for students, staff and the public. No student or nonstudent, including adults and visitors, shall possess, use or distribute a weapon when in a school location except as provided in this policy. The school district will act to enforce this policy and to discipline to take appropriate action against any student, teacher, administrator, school employee, volunteer, or member of the public who violates this policy.

### [POLICY 526 - HAZING PROHIBITION](#)

The purpose of this policy is to maintain a safe learning environment for students and staff that is free from hazing. Hazing activities of any type are inconsistent with the educational goals of the school district and are prohibited at all times.

## Educational records

### [POLICY 515 - PROTECTION AND PRIVACY OF PUPIL RECORD](#)

The school district recognizes its responsibility in regard to the collection, maintenance and dissemination of pupil records and the protection of the privacy rights of students as provided in federal law and state statutes.

## Field trips

### [POLICY 610 - FIELD TRIPS](#)

The purpose of this policy is to provide guidelines for student trips and to identify the general process to be followed for review and approval of trip requests.

## Student rights and responsibilities

### [POLICY 502 - SEARCH OF STUDENT LOCKERS, DESKS, PERSONAL POSSESSIONS, AND STUDENT](#)

The purpose of this policy is to provide for a safe and healthful educational environment by enforcing the school district's policies against contraband.

### [POLICY 531 - PLEDGE OF ALLEGIANCE](#)

The school board recognizes the need to display an appropriate United States flag and to provide instruction to students in the proper etiquette, display, and respect of the flag. The purpose of this policy is to provide for recitation of the pledge of allegiance and instruction in school to help further that end.

### [POLICY 536 - GENDER INCLUSION](#)

All students of the school district, including transgender and gender diverse students, deserve respectful and inclusive learning environments that value students' gender identity and gender expression. The school district strives to provide programming and facilities where all students feel safe and supported.

## **POLICY 521 - STUDENT DISABILITY NONDISCRIMINATION**

The purpose of this policy is to protect disabled students from discrimination on the basis of disability and to identify and evaluate learners who, within the intent of Section 504 of the Rehabilitation Act of 1973, need special services, accommodations, or programs in order that such learners may receive a free appropriate public education.

## **POLICY 522 - STUDENT SEX NONDISCRIMINATION**

The purpose of this policy is to help create a safe and nurturing environment that energizes the spirit of students and ensure that students are protected from discrimination on the basis of sex pursuant to Title IX of the Education Amendments of 1972 and the Minnesota Human Rights Act. The purpose of this policy is to provide equal educational opportunity for all students and to prohibit discrimination on the basis of sex.

## **Technology**

### **POLICY 524 - INTERNET AND TECHNOLOGY RESPONSIBLE USE - STUDENT**

The purpose of this policy is to set forth policies and guidelines for student access to the school district computer systems, devices and acceptable and safe use of the Internet, including electronic communications.

## **Transportation**

### **POLICY & PROCEDURES 709 - STUDENT TRANSPORTATION SAFETY**

The purpose of this policy is to provide safe transportation for students and to educate students on safety issues and the responsibilities of school bus ridership.

## **ATTENDANCE BOUNDARIES**

St. Louis Park Public Schools has three neighborhood elementary schools –Aquila, Peter Hobart, and Susan Lindgren – that serve students in grades kindergarten through fifth grade. Use the “School Attendance Look-Up” feature at [www.slpschools.org/transportation](http://www.slpschools.org/transportation) to see which neighborhood elementary school your child will attend based on their primary address. Please note that a fourth K-5 elementary school, Park Spanish Immersion Elementary School, enrolls students throughout the district boundaries through a computer generated lottery. If a family chooses to attend a school outside of their attendance boundary, there is no transportation provided. Transportation is only provided districtwide for students who attend Park Spanish Immersion Elementary School.

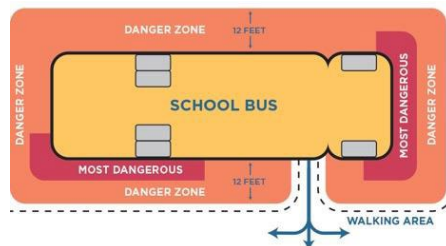
## **ASSIGNED SEATS**

All elementary students will have assigned seats this year.

## **SAFETY & BEHAVIOR RULES**

- Rules to remember:
- Arrive five minutes before the bus is scheduled to come.
- Respect the property around the bus stop.
- If you are crossing the street, watch for a sign from the driver (a hand signal or a nod) that it is OK to cross.
- Cross ten feet in front of the bus where the driver can see you.
- When you get off the bus, move 10 feet away and stay there until the bus driver signals you that it is safe to cross the street.
- Walk in front of the bus, look both ways and, if no cars are moving, cross the street.
- Stay out of the danger zone around the bus.

### **Danger Zone**



## **Bus behavior rules:**

- Follow the driver's instructions
- Remain in your seat at all times
- Speak in a quiet voice
- Do not tease or harass others
- Do not fight or be rowdy
- Keep your hands and feet to yourself
- Do not throw objects inside the bus or out the window
- Do not eat or drink on the bus
- Keep the aisle clear
- Do not bring anything dangerous on the bus

## **What's allowed on the bus:**

- Generally, students may bring items that fit into a backpack. An exception is musical instruments, which may be brought to school for music classes.

## **Objects not allowed on the bus:**

- Animals, insects or fish
- Skis, snowboards, skateboards
- Matches/lighters/fireworks
- Glass items
- Golf clubs
- Weapons/Anything dangerous

## **Behavior consequences:**

- Riding the bus is a privilege, not a right. When a student chooses not to behave on the bus, the driver will discuss the behavior with the student and fill out a bus conduct report. The driver may also assign the student to a seat at the front of the bus.
- First Incident: The driver will discuss the misbehavior with the student. The bus company will send a report to the parent and the school.
- Second Incident: The driver will discuss the misbehavior with the student. The bus company will again send a report to the parent and the school. A school staff member will contact the parent.
- Third and Subsequent Incidents: The student will not be allowed to ride the bus for a period of time. The parent and student will be invited to a conference. If a student's behavior on the bus is dangerous or destructive, bus riding privileges may be revoked immediately. When a student is not allowed to ride the bus, it is the parent's responsibility to get the student to and from school.

For more information and safety videos, visit <https://www.slpschools.org/about/departments/transportation>.



## Wellness & Student Services

The Wellness Policy Committee's purpose is to advise district administration regarding implementation of the Wellness Policy in compliance with USDA guidelines and to build community trust in the district's efforts to establish a school environment that promotes student health, well-being and ability to learn.

There are 20 members of the school district Wellness Committee: Facilitator, Director of Business Services/Director of Curriculum & Instruction (2); Manager of School Nutrition (1); School Nutrition Staff (1); Teachers (up to 4); Principal (up to 2); and Community members (up to 10). There is an annual application for membership issued by the school district in the fall and advertised in all school newsletters and on school websites.

Meeting topics can include: wellness leadership; elementary nutrition curriculum in phy. Ed.; promoting intentional secondary physical activity; wellness promotion and education; and healthy meals and snacks.

The Student Services Department covers a variety of program areas for students and families including health services, special education, and serving as both the Title IX and homeless student liaison for the school district.

### POLICY 419 - TOBACCO-FREE ENVIRONMENT

The purpose of this policy is to maintain a learning and working environment that is tobacco-free.

### POLICY 533 - WELLNESS

The purpose of this policy is to set forth methods that promote student wellness, prevent and reduce childhood obesity and assure that school meals and other food and beverages sold and otherwise make available on the school campus during the school day are consistent with applicable minimum local, state and federal standards.

### POLICY 516 - STUDENT MEDICATION

The purpose of this policy is to set forth the provisions that must be followed when administering non-emergency prescription medication to students at school.

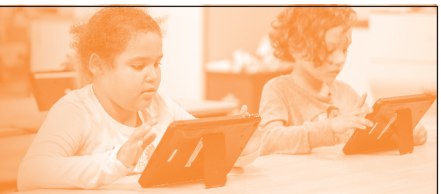
## Community Education & Youth Enrichment Programs

St. Louis Park Community Education offers classes for every age and at every stage of learning, from Early Learning through Adults/Seniors! You can browse programs at [www.slp.ce.eleyo.com](http://www.slp.ce.eleyo.com).

### Youth Enrichment Program (YEP)

St. Louis Park Public Schools Youth Enrichment Program (YEP) offers before and after school academic programs, enrichment and recreation opportunities, and childcare options for families. YEP's activities for K-8 students include a drawing class, chess club, Lego class, coding class, guitar lessons, and a puzzles & riddles escape experience.

Visit [www.slp.ce.eleyo.com](http://www.slp.ce.eleyo.com) to register for YEP programming. Questions about YEP offerings can be directed to Kelleen O'Brien at [obrien.kelleen@slpschools.org](mailto:obrien.kelleen@slpschools.org) or 952-928-6399.



## Your Favorite After-School Enrichment Classes

**NOW VIRTUAL - Grades K-8**



#### Classes Include:

- Drawing Class
- Chess Club
- Lego® Class
- Intro to Coding (NEW!)
- Guitar Lessons
- Escape Room

#### FINANCIAL ASSISTANCE AVAILABLE

Contact Kelleen at 952-928-6399 to tailor a plan that works for your family!

Questions about YEP programs? Email Kelleen O'Brien at [obrien.kelleen@slpschools.org](mailto:obrien.kelleen@slpschools.org) or call (952) 928-6399.

**REGISTER** for YEP classes at [www.slp.ce.eleyo.com](http://www.slp.ce.eleyo.com) | 952-928-6399



# Communication of School Closing, Late Start and Early Dismissal

**When snow arrives in Minnesota, be prepared for a school closing, late start or early dismissal due to bad weather!**

St. Louis Park Public Schools will do our best to make a decision about a late start or school closing **by 5:30 a.m.**

Early dismissal and decisions regarding after-school and evening athletics, events and activities will be made **by 2 p.m.**

**The District communicates a school closing, late start or early dismissal by:**



**Automated phone call to Staff and Families**



**Web posting to [www.slpschools.org](http://www.slpschools.org)**



**Information will be posted on the District's Facebook and Twitter accounts**



**Communication to WCCO Radio (830) and local TV Channels 4, 5, 9, and 11**



**Recorded message on School Closing Hotline (phone: 952-928-6055)**

If school must close early, buses will take home regular riders. Younger students who walk will be kept at school if there is any uncertainty about whether a parent or neighbor is home to care for them.

The school district is in contact with the National Weather Service, St. Louis Park Transportation, and leaders from other school districts to provide the best response to keep students and staff safe in severe weather conditions.

The school district will not communicate that school is open as scheduled. If a school closing, late start or early dismissal is not announced, staff and students should attend as usual.



**St. Louis Park  
Public Schools**

*Achieving success, one student at a time!*



# St. Louis Park Public Schools

## 2022-23 Student Calendar at a Glance

### September 2022

6	First day of school Gr. 1-12
7	First day of school for Kindergarten
30	No School E-12 ( <i>K-5 Conferences, 6-12 Professional Development</i> )

### October 2022

20-21	No School E-12 ( <i>MEA</i> )
-------	-------------------------------

### November 2022

4	No School K-5 ( <i>Professional Develop</i> ); No School 6-12 ( <i>Grading/Reporting Day</i> )
18	6-12 Asynchronous Learning Day and Student Conferences; K-5 in session
23	No School E-12 ( <i>E-12 Conference Comp Day</i> )
24-25	No School E-12 ( <i>Fall Break</i> )

### December 2022

2	No School E-12 ( <i>Professional Develop</i> )
22-31	No School E-12 ( <i>Winter Break</i> )

### January 2023

2	No School E-12 ( <i>Winter Break</i> )
16	No School E-12 ( <i>MLK Day</i> )
27	No School E-12 ( <i>Grading/Reporting Day</i> )

### February 2023

3	No School E-12 ( <i>E-12 Professional Development</i> )
17	No School K-5 ( <i>Conferences</i> ); 6-12 in session
20	No School E-12 ( <i>Presidents' Day</i> )

### March 2023

17	9-12 Asynchronous Learning Day; K-8 in session
31	No School E-12 ( <i>Work/Grading Day</i> )

### April 2023

3-7	No School E-12 ( <i>Spring Break</i> )
21	6-8 Asynchronous Learning Day; K-5 and 9-12 in session

### May 2023

29	No School E-12 ( <i>Memorial Day</i> )
----	--

### June 2023

6 or 7	SLP High School Graduation (TBD)
8	Last Day E-11

District Office, schools, community centers and  
Kids Place closed the following dates:

2022 – July 4, September 5, November 24-25,  
December 23, December 26, December 30

2023 – January 2, January 16, February 20, April 7, May 29



St. Louis Park  
Public Schools

www.slpschools.org

### July 2022

S	M	T	W	T	F	S
					1	2
3	4	5	6	7	8	9
10	11	12	13	14	15	16
17	18	19	20	21	22	23
24	25	26	27	28	29	30
31						

### September 2022

S	M	T	W	T	F	S
				1	2	3
4	5	6	7	8	9	10
11	12	13	14	15	16	17
18	19	20	21	22	23	24
25	26	27	28	29	30	

### November 2022

S	M	T	W	T	F	S
		1	2	3	4	5
6	7	8	9	10	11	12
13	14	15	16	17	18	19
20	21	22	23	24	25	26
27	28	29	30			

### January 2023

S	M	T	W	T	F	S
1	2	3	4	5	6	7
8	9	10	11	12	13	14
15	16	17	18	19	20	21
22	23	24	25	26	27	28
29	30	31				

### March 2023

S	M	T	W	T	F	S
			1	2	3	4
5	6	7	8	9	10	11
12	13	14	15	16	17	18
19	20	21	22	23	24	25
26	27	28	29	30	31	

### May 2023

S	M	T	W	T	F	S
	1	2	3	4	5	6
7	8	9	10	11	12	13
14	15	16	17	18	19	20
21	22	23	24	25	26	27
28	29	30	31			

### CALENDAR KEY

- First Day of School
- No School for Students
- Asynchronous Learning (6-12)

### August 2022

S	M	T	W	T	F	S
	1	2	3	4	5	6
7	8	9	10	11	12	13
14	15	16	17	18	19	20
21	22	23	24	25	26	27
28	29	30	31			

### October 2022

S	M	T	W	T	F	S
						1
2	3	4	5	6	7	8
9	10	11	12	13	14	15
16	17	18	19	20	21	22
23	24	25	26	27	28	29
30	31					

### December 2022

S	M	T	W	T	F	S
				1	2	3
4	5	6	7	8	9	10
11	12	13	14	15	16	17
18	19	20	21	22	23	24
25	26	27	28	29	30	31

### February 2023

S	M	T	W	T	F	S
			1	2	3	4
5	6	7	8	9	10	11
12	13	14	15	16	17	18
19	20	21	22	23	24	25
26	27	28				

### April 2023

S	M	T	W	T	F	S
						1
2	3	4	5	6	7	8
9	10	11	12	13	14	15
16	17	18	19	20	21	22
23	24	25	26	27	28	29
30						

### June 2023

S	M	T	W	T	F	S
				1	2	3
4	5	6	7	8	9	10
11	12	13	14	15	16	17
18	19	20	21	22	23	24
25	26	27	28	29	30	

- High School Graduation (TBD)
- Last Day of School (E-11)



### Aquila Elementary School

8500 W. 31st Street  
St. Louis Park, MN 55426

**Phone:**

952-928-6500

**Attendance:**

952-928-6507

**Fax:**

952-928-6466

**Health Office:**

952-928-6505

**School Nutrition:**

952-928-6516

**Bus (Transportation):**

612-437-4719

**Website:**

[aq.slpschools.org](http://aq.slpschools.org)



### Park Spanish Immersion Elementary School

9400 Cedar Lake Rd.  
St. Louis Park, MN 55426

**Phone:**

952-928-6555

**Attendance:**

952-928-6570

**Fax:**

952-928-6556

**Health Office:**

952-928-6554

**School Nutrition:**

952-928-6567

**Bus (Transportation):**

612-437-4719

**Website:**

[psi.slpschools.org](http://psi.slpschools.org)



### Peter Hobart Elementary School

6500 W. 26th Street  
St. Louis Park, MN 55426

**Phone:**

952-928-6600

**Attendance:**

952-928-6604

**Fax:**

952-928-6643

**Health Office:**

952-928-6605

**School Nutrition:**

952-928-6598

**Bus (Transportation):**

612-437-4719

**Website:**

[ph.slpschools.org](http://ph.slpschools.org)



### Susan Lindgren Elementary School

4801 W. 41st Street  
St. Louis Park, MN 55416

**Phone:**

952-928-6700

**Attendance:**

952-928-6693

**Fax:**

952-928-6713

**Health Office:**

952-928-6693

**School Nutrition:**

952-928-6704

**Bus (Transportation):**

612-437-4719

**Website:**

[sl.slpschools.org](http://sl.slpschools.org)



## St. Louis Park Public Schools

**Stay Connected with St. Louis Park Public Schools!**

**Facebook:** @stlouisparkpublicschools

**Twitter:** @SLPublicSchools

**Instagram:** @st.louisparkpublicschools

**Web:** [www.slpschools.org](http://www.slpschools.org)

[www.gopark.org](http://www.gopark.org) (athletics)



# St. Louis Park Public Schools | Quick Facts 2021

## Aquila Elementary School



Annual School Play

**538**  
Number of students  
in grades K-5



**30**  
minutes of  
Physical  
Education Daily

### Student Demographics

White: 43.5%  
Black/African American: 28.3%  
Hispanic/Latino: 11.5%  
Two or More Races: 11.5%  
Asian: 4.8%  
American Indian/Alaska Native: 0.4%



Band & Orchestra Opportunities

### Schoolwide Family Events

- Carnival
- Latino Family Night
- Somali Family Night
- Bingo Night



Annual Author Day

**2** Days Per Week:  
• Spanish Instruction  
• Music Instruction



Improved Nutrition Options

**30** Teachers with advanced degrees

Kids Place location for before and after school child care



5th Grade Camp Induhapi Trip



Enriching Art Experiences

Social, emotional, and mental health services available to all students



Interdisciplinary Science Instruction

**14:1**

Student to licensed teacher ratio



**Aquila Elementary School**

Kindergarten-Grade 5  
3500 West 31st Street  
St. Louis Park, MN 55428  
Office: 952-928-0500  
aq.elpschools.org

School Start/End Times  
Start: 7:45 a.m.  
End: 2:15 p.m.

July 22, 2021 2:09 PM

# St. Louis Park Public Schools Park Spanish Immersion Elementary School

## Quick Facts 2021

*An academic bilingual community  
fostering global citizenship*



**518**  
Number of students  
in grades K-5



### Student Demographics

White: 72.6%

Black/African American: 4.2%

Hispanic/Latino: 11.4%

Asian: 1.0%

Native Hawaiian/Pacific Islander: 0.2%



### MCA Proficiency Rates (2019)

Reading: 74.5%

Math: 71.5%

**1996**

Year PSI was founded



**20**

Teachers  
with  
advanced  
degrees

Kids Place  
location for  
before and after  
school child  
care



**18:1**

Student to  
licensed  
teacher ratio



Social,  
emotional,  
and mental  
health services  
available to all  
students

**14**

Number of countries  
represented by  
PSI staff



**Park Spanish Immersion  
Elementary School**

*An academic bilingual community  
fostering global citizenship*

Kindergarten-Grade 5  
9400 Cedar Lake Rd.  
St. Louis Park, MN 55426  
Office: 952-925-6505  
[psl@pschools.org](mailto:psl@pschools.org)

School Start/End Times  
Start: 7:45 a.m.  
End: 2:15 p.m.



# St. Louis Park Public Schools | Quick Facts 2021

## Peter Hobart Elementary School

### Peter Hobart Pride

1. Be Safe
2. Be Respectful
3. Try Your Hardest

# 493

Number of students  
in grades K-5

# 30

minutes of  
Physical  
Education Daily

### Student Demographics

White: 48.5%  
Black/African American: 22.5%  
Two or More Races: 13.0%  
Hispanic/Latino: 10.9%  
Asian: 3.4%  
American Indian/Alaska Native: 1.0%  
Native Hawaiian/Pacific Islander: 0.2%



Band & Orchestra Opportunities

### MCA Proficiency Rates (2019)

Reading: 56.1%  
Math: 53.9%

# 13:1

Student to licensed  
teacher ratio

# 2

Days Per  
Week:

- Spanish Instruction
- Music Instruction



New Accessible Playground

# 30

Teachers  
with  
advanced  
degrees

Kids Place  
location for  
before and after  
school child  
care



5th Grade Camp Induhapi Trip



Enriching Art  
Experiences



Interdisciplinary  
Science Instruction

Social,  
emotional, and  
mental health  
services  
available to  
all students



Annual Author Day



**Peter Hobart  
Elementary School**

Kindergarten-Grade 5  
6500 West 26th Street  
St. Louis Park, MN 55426  
Office: 612-825-8800  
phelpschools.org

School Start/End Times  
Start: 7:45 a.m.  
End: 2:15 p.m.

July 22, 2021 3:04 PM



# St. Louis Park Public Schools | Quick Facts 2021

## Susan Lindgren Elementary School



**444**  
Number of students  
in grades K-5



### Student Demographics

White: 55.2%  
Black/African American: 20.3%  
Hispanic or Latino: 10.6%  
Two or More Races: 8.8%  
Asian: 4.5%  
American Indian/Alaska Native: 0.7%

### Band & Orchestra Opportunities



### MCA Proficiency Rates (2019)

Reading: 62.2%  
Math: 65.1%



**2** Days Per  
Week:  
• Spanish Instruction  
• Music Instruction



**29** Teachers  
with  
advanced  
degrees

Kids Place  
location for  
before and after  
school child  
care



**14:1**  
Student to  
licensed  
teacher ratio



Social, emotional,  
and mental  
health services  
available to all  
students



**Susan Lindgren  
Elementary School**

Kindergarten-Grade 5  
4801 West 41st Street  
St. Louis Park, MN 55416  
Office: 952-925-8700  
el@schools.org

School Start/End Times  
Start: 7:45 a.m.  
End: 2:15 p.m.

July 22, 2021 9:54 PM