

LEA Name : Canon-McMillan SD  
Address : 1 N Jefferson Ave  
Canonburg, PA 15317

County : Washington  
AUN Number : 101631703  
LEA Type : SD

## Annual Financial Report Accuracy Certification Statement

For Fiscal Year Ending  
6/30/2019

Pennsylvania Department of Education

&

Office of Comptroller Operations

PDE-2056: Intermediate Unit  
PDE-2057: School District, AVTS/CTC, Charter School,  
and Special Program Jurisdictions

CERTIFICATION: By signing this page I agree that the electronic data submitted is a complete and accurate statement of the financial operations and status of the local education agency for the fiscal year. It has been prepared in accordance with generally accepted accounting principles and established Commonwealth of PA reporting guidelines.

Michael Danile  
Chief School Administrator Signature

Date 5/5/2020

Jon Mammann  
Board Secretary Signature

Date 5/5/2020

Jon Mammann

(724)746-2640 Ext: 9109

Contact Person

Contact Person Telephone Number

mmammann@cmsd.k12.pa.us

(724)746-9184

Contact Person E-mail Address

Contact Person Fax Number

# Audit Certification

## Annual Financial Report:

For Fiscal Year Ending 6/30/2019

(Pursuant to PA School Code Section 218(b))

LEA Name : Canon-McMillan SD

AUN Number : 101631703

County : Washington

Audit Certification Due:  
12/31/2019

This certification is applicable to the Annual Financial Report data submitted through the Consolidated Financial Reporting System on: 10/30/19

Date

### Auditing Firm:

Cypher & Cypher

CERTIFICATION: By signing this page I agree that the financial statements of the school have been properly audited as noted above pursuant to Article XXIV, and in the auditor's professional opinion, the Annual Financial Report (PDE-2057) submitted on the date referenced is materially consistent with the audited financial statements.

Chief School Administrator

Michael Danek  
Signature

Date

10/30/19

Board Secretary

Joni Mansmann  
Signature

Date

Joni Mansmann

Contact Person

(724)746-2940

Contact Person Telephone Number

Ext :9109

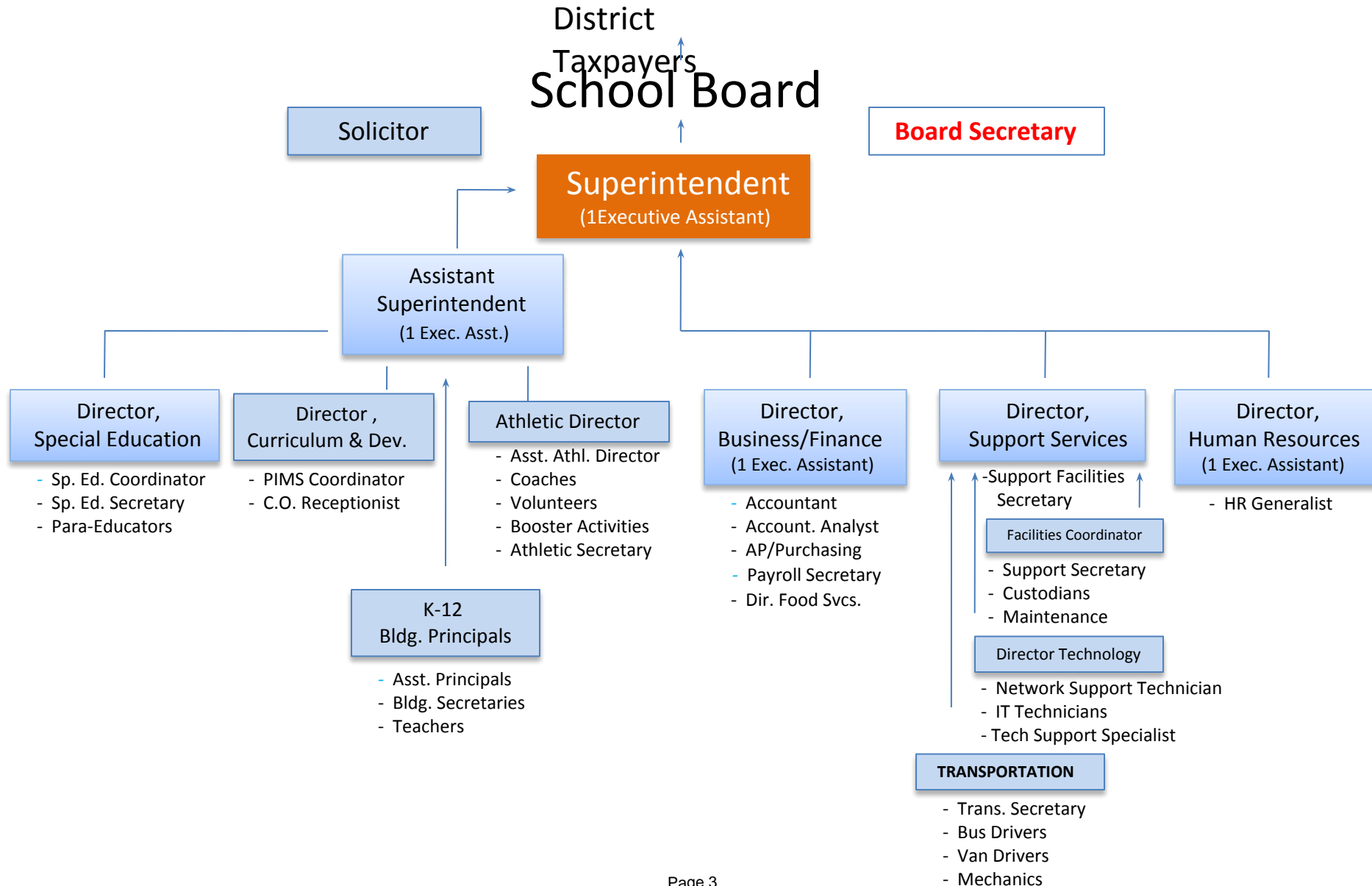
mansmannj@cmsd.k12.pa.us

Contact Person E-mail Address

(724)746-9184

Contact Person Fax Number

# CMSD Admin Org Chart







<u>Val Number</u>	<u>Description</u>	<u>Justification</u>
42420	<p>Expenditure Detail: Total current year 2700-513 expenditure varies from prior year by 10%. Correct the data or enter a justification.</p> <p>2700-513, AFR Exp Detail: \$2,784,781.90 2700-513, PY AFR Amount: \$2,116,821.64</p>	<p>District continues to experience growth &amp; see more out of district placements for students requiring special transportation. In addition, Sp. Education students often require more transportation services in turn requiring additional contracted carrier srv</p>

LEA : 101631703 Canon-McMillan SD

Printed 5/7/2020 4:27:29 PM

Amounts Expressed in Whole Dollars		<u>General Fund</u> <u>(10)</u>	<u>Public Purpose Trust</u> <u>(27)</u>	<u>Other Compt Approved</u> <u>(28)</u>	<u>Athletic / Activity</u> <u>(29)</u>	<u>Capital Reserve (690.</u> <u>1850)</u> <u>(31)</u>
<b>Assets And Deferred Outflows Of Resources</b>						
<b>Assets</b>						
0100 Cash and Cash Equivalents		10,290,509			54,046	
0110 Investments		611,658				
0120 Taxes Receivable		1,760,378				
0130 Due From Other Funds		719,643			1	
0141 Due From Other Governments						
0142 State Revenue Receivable		2,844,652				
0143 Federal Revenue Receivable		136,261				
0145 Other Intergovernmental Revenue Receivable						
0146 Due from Primary Government						
0147 Due from Component Unit						
0150 Other Receivables		404,917				
0170 Inventories		94,674				
0180 Prepaid Expenses (Expenditures)		745,688				
0190 Other Current Assets						
<b>Total Assets</b>		<b>\$17,608,380</b>			<b>\$54,047</b>	
0910 Deferred Outflows of Resources						
<b>Total Assets And Deferred Outflows Of Resources</b>		<b>\$17,608,380</b>			<b>\$54,047</b>	

LEA : 101631703 Canon-McMillan SD

Printed 5/7/2020 4:27:29 PM

Amounts Expressed in Whole Dollars		<u>Capital Reserve (1431</u> <u>(32)</u>	<u>Other Capital Projects</u> <u>Fund</u> <u>(39)</u>	<u>Debt Service</u> <u>(40)</u>	<u>Permanent</u> <u>(90)</u>	<u>Total Governmental</u> <u>Funds</u>
<b>Assets And Deferred Outflows Of Resources</b>						
<b>Assets</b>						
0100	Cash and Cash Equivalents	4,054,376	14,976,051	1,283,227		30,658,209
0110	Investments	523,038		3,364,343		4,499,039
0120	Taxes Receivable					1,760,378
0130	Due From Other Funds					719,644
0141	Due From Other Governments		1,004,556			1,004,556
0142	State Revenue Receivable			4		2,844,656
0143	Federal Revenue Receivable					136,261
0145	Other Intergovernmental Revenue Receivable					
0146	Due from Primary Government					
0147	Due from Component Unit					
0150	Other Receivables		155			405,072
0170	Inventories					94,674
0180	Prepaid Expenses (Expenditures)					745,688
0190	Other Current Assets					
<b>Total Assets</b>		<b>\$4,577,414</b>	<b>\$15,980,762</b>	<b>\$4,647,574</b>		<b>\$42,868,177</b>
0910	Deferred Outflows of Resources					
<b>Total Assets And Deferred Outflows Of Resources</b>		<b>\$4,577,414</b>	<b>\$15,980,762</b>	<b>\$4,647,574</b>		<b>\$42,868,177</b>

LEA : 101631703 Canon-McMillan SD

Printed 5/7/2020 4:27:29 PM

Amounts Expressed in Whole Dollars	<u>General Fund</u> <u>(10)</u>	<u>Public Purpose Trust</u> <u>(27)</u>	<u>Other Compt Approved</u> <u>(28)</u>	<u>Athletic / Activity</u> <u>(29)</u>	<u>Capital Reserve (690.</u> <u>1850)</u> <u>(31)</u>
<b>Liabilities And Deferred Inflows Of Resources And Fund Balances</b>					
<b>Liabilities</b>					
0400 Due to Other Funds	1,004,562				
0411 Due to Other Governments	35,757				
0412 Due to Primary Government					
0413 Due to Component Unit					
0420 Accounts Payable	1,427,218				
0430 Contracts Payable					
0440 Current Portion of Long-Term Debt					
0450 Short-Term Payables					
0461 Accrued Salaries and Benefits	7,920,781				
0462 Payroll Deductions and Withholding					
0480 Unearned Revenues	26,345				
0490 Other Current Liabilities	33,833				
<b>Total Liabilities</b>	<b>\$10,448,496</b>				
0950 Deferred Inflows of Resources					
<b>Fund Balances</b>					
0810 Nonspendable Fund Balance	840,361				
0820 Restricted Fund Balance					
0830 Committed Fund Balance	1,500,000				
0840 Assigned Fund Balance	175,104			54,047	
0850 Unassigned Fund Balance	4,644,419				
<b>Total Fund Balances</b>	<b>\$7,159,884</b>			<b>\$54,047</b>	
<b>Total Liabilities, Deferred Inflows Of Resources And Fund Balances</b>	<b>\$17,608,380</b>			<b>\$54,047</b>	

LEA : 101631703 Canon-McMillan SD

Printed 5/7/2020 4:27:29 PM

Amounts Expressed in Whole Dollars		<u>Capital Reserve (1431)</u> <u>(32)</u>	<u>Other Capital Projects</u> <u>Fund</u> <u>(39)</u>	<u>Debt Service</u> <u>(40)</u>	<u>Permanent</u> <u>(90)</u>	<u>Total Governmental</u> <u>Funds</u>
<b>Liabilities And Deferred Inflows Of Resources And Fund Balances</b>						
<b>Liabilities</b>						
0400	Due to Other Funds					1,004,562
0411	Due to Other Governments					35,757
0412	Due to Primary Government					
0413	Due to Component Unit					
0420	Accounts Payable		117,731			1,544,949
0430	Contracts Payable					
0440	Current Portion of Long-Term Debt					
0450	Short-Term Payables					
0461	Accrued Salaries and Benefits					7,920,781
0462	Payroll Deductions and Withholding					
0480	Unearned Revenues					26,345
0490	Other Current Liabilities					33,833
<b>Total Liabilities</b>			<b>\$117,731</b>			<b>\$10,566,227</b>
0950	Deferred Inflows of Resources					
<b>Fund Balances</b>						
0810	Nonspendable Fund Balance					840,361
0820	Restricted Fund Balance					
0830	Committed Fund Balance	4,577,414	15,863,031	4,647,574		26,588,019
0840	Assigned Fund Balance					229,151
0850	Unassigned Fund Balance					4,644,419
<b>Total Fund Balances</b>		<b>\$4,577,414</b>	<b>\$15,863,031</b>	<b>\$4,647,574</b>		<b>\$32,301,950</b>
<b>Total Liabilities, Deferred Inflows Of Resources And Fund Balances</b>		<b>\$4,577,414</b>	<b>\$15,980,762</b>	<b>\$4,647,574</b>		<b>\$42,868,177</b>



LEA : 101631703     Canon-McMillan SD

Printed 5/7/2020 4:27:35 PM

Amounts Expressed in Whole Dollars	General Fund (10)	Public Purpose Trust (27)	Other Compt Approved (28)	Athletic / Activity (29)	Capital Reserve (690. 1850) (31)
<b>Revenues</b>					
6000 Revenue from Local Sources	62,568,696			127,094	
7000 Revenue from State Sources	24,313,549				
8000 Revenue from Federal Sources	610,841				
<b>Total Revenues</b>	<b>\$87,493,086</b>			<b>\$127,094</b>	
<b>Expenditures</b>					
1000 Instruction	44,682,899				
2000 Support Services	27,568,854				
3000 Operation of Non-Instructional Services	1,827,164			104,054	
4000 Facilities Acquisition, Construction and Improvement Services	500,620				
5110 Debt Service	9,526,010				
5130 Refund of Prior Year Revenues / Receipts					
<b>Total Expenditures</b>	<b>\$84,105,547</b>			<b>\$104,054</b>	
<b>Excess (Deficiency) Of Revenues Over Expenditures</b>	<b>\$3,387,539</b>			<b>\$23,040</b>	
<b>Other Financing Sources (Uses)</b>					
9110 Face Value of Bonds Issued					
9120 Proceeds from Refunding of Bonds					
9130 Bond Premiums					
9200 Proceeds from Extended-Term Financing					
9300 Interfund Transfers - IN					
9400 Sale of or Compensation for Loss of Fixed Assets	9,859				
9710 Transfers from Component Units					
9720 Transfers from Primary Governments					
9910 Other Financing Sources Not Listed in the 9000 Series					
9990 Insurance Recoveries	26,500				
5120 Debt Service – Refunded Bonds					
5150 Bond Discounts					
5200 Interfund Transfers – Out	1,000,000				
5300 Transfers Out to Component Units/Primary Governments					
<b>Total Other Financing Sources (Uses)</b>	<b>(\$963,641)</b>				

LEA : 101631703      Canon-McMillan SD

Printed 5/7/2020 4:27:35 PM

Amounts Expressed in Whole Dollars	<u>Capital Reserve (1431)</u> <u>(32)</u>	<u>Other Capital Projects</u> <u>Fund</u> <u>(39)</u>	<u>Debt Service</u> <u>(40)</u>	<u>Permanent</u> <u>(90)</u>	<u>Total Governmental</u> <u>Funds</u>
<b>Revenues</b>					
6000 Revenue from Local Sources	101,485	476,561	72,679		63,346,515
7000 Revenue from State Sources					24,313,549
8000 Revenue from Federal Sources					610,841
<b>Total Revenues</b>	<b>\$101,485</b>	<b>\$476,561</b>	<b>\$72,679</b>		<b>\$88,270,905</b>
<b>Expenditures</b>					
1000 Instruction					44,682,899
2000 Support Services					27,568,854
3000 Operation of Non-Instructional Services					1,931,218
4000 Facilities Acquisition, Construction and Improvement Services	6,982	10,638,059			11,145,661
5110 Debt Service					9,526,010
5130 Refund of Prior Year Revenues / Receipts					
<b>Total Expenditures</b>	<b>\$6,982</b>	<b>\$10,638,059</b>			<b>\$94,854,642</b>
<b>Excess (Deficiency) Of Revenues Over Expenditures</b>	<b>\$94,503</b>	<b>(\$10,161,498)</b>	<b>\$72,679</b>		<b>(\$6,583,737)</b>
<b>Other Financing Sources (Uses)</b>					
9110 Face Value of Bonds Issued					
9120 Proceeds from Refunding of Bonds					
9130 Bond Premiums					
9200 Proceeds from Extended-Term Financing					
9300 Interfund Transfers - IN		1,000,000			1,000,000
9400 Sale of or Compensation for Loss of Fixed Assets					9,859
9710 Transfers from Component Units					
9720 Transfers from Primary Governments					
9910 Other Financing Sources Not Listed in the 9000 Series					
9990 Insurance Recoveries					26,500
5120 Debt Service – Refunded Bonds					
5150 Bond Discounts					
5200 Interfund Transfers – Out					1,000,000
5300 Transfers Out to Component Units/Primary Governments					
<b>Total Other Financing Sources (Uses)</b>		<b>\$1,000,000</b>			<b>\$36,359</b>

Amounts Expressed in Whole Dollars		<u>General Fund</u> <u>(10)</u>	<u>Public Purpose Trust</u> <u>(27)</u>	<u>Other Compt Approved</u> <u>(28)</u>	<u>Athletic / Activity</u> <u>(29)</u>	<u>Capital Reserve</u> <u>(690.</u> <u>1850)</u> <u>(31)</u>
<b>Special And Extraordinary Items</b>						
9920	Special Items – Gains					
9930	Extraordinary Items – Gains					
5520	Special Items – Losses					
5530	Extraordinary Items – Losses					
<b>Net Change In Fund Balances</b>		<b>\$2,423,898</b>			<b>\$23,040</b>	
<b>Fund Balance</b>						
0001	Fund Balance - Beginning of Fiscal Year	4,735,986			31,005	
<b>Fund Balance - End Of Year</b>		<b>\$7,159,884</b>			<b>\$54,045</b>	

Amounts Expressed in Whole Dollars		<u>Capital Reserve (1431)</u> <u>(32)</u>	<u>Other Capital Projects</u> <u>Fund</u> <u>(39)</u>	<u>Debt Service</u> <u>(40)</u>	<u>Permanent</u> <u>(90)</u>	<u>Total Governmental</u> <u>Funds</u>
<b>Special And Extraordinary Items</b>						
9920 Special Items – Gains						
9930 Extraordinary Items – Gains						
5520 Special Items – Losses						
5530 Extraordinary Items – Losses						
<b>Net Change In Fund Balances</b>		<b>\$94,503</b>	<b>(\$9,161,498)</b>	<b>\$72,679</b>		<b>(\$6,547,378)</b>
<b>Fund Balance</b>						
0001 Fund Balance - Beginning of Fiscal Year		4,482,911	25,024,529	4,574,895		38,849,326
<b>Fund Balance - End Of Year</b>		<b>\$4,577,414</b>	<b>\$15,863,031</b>	<b>\$4,647,574</b>		<b>\$32,301,948</b>

LEA : 101631703 Canon-McMillan SD

Printed 5/7/2020 4:27:38 PM

Amounts Expressed in Whole Dollars	<u>Food Service</u> <u>(51)</u>	<u>Child Care</u> <u>Operations</u> <u>(52)</u>	<u>Other Enterprise</u> <u>(58)</u>	<u>TOTAL</u>	<u>Internal Service</u> <u>(60)</u>
<b>Assets And Deferred Outflows Of Resources</b>					
<b>Current Assets</b>					
0100 Cash and Cash Equivalents	583,558			583,558	
0110 Investments	491,339			491,339	5,436,298
0130 Due From Other Funds					
0141 Due From Other Governments					
0142 State Revenue Receivable					
0143 Federal Revenue Receivable					
0146 Due from Primary Government					
0147 Due from Component Unit					
0150 Other Receivables	84,828			84,828	
0170 Inventories	4,811			4,811	
0180 Prepaid Expenses (Expenditures)					
0190 Other Current Assets					
<b>Total Current Assets</b>	<b>\$1,164,536</b>			<b>\$1,164,536</b>	<b>\$5,436,298</b>
<b>Noncurrent Assets</b>					
0211 Land					
0212 Site Improvements (Net)					
0220 Buildings and Building Improvements (Net)					
0230 Machinery, Equipment and Furniture (Net)	423,109			423,109	
0250 Construction in Progress					
0260 Long Term Prepayments					
0290 Other Noncurrent Assets					
<b>Total Noncurrent Assets</b>	<b>\$423,109</b>			<b>\$423,109</b>	
0910 Deferred Outflows of Resources					
<b>Total Assets And Deferred Outflows Of Resources</b>	<b>\$1,587,645</b>			<b>\$1,587,645</b>	<b>\$5,436,298</b>



LEA : 101631703      Canon-McMillan SD

Printed 5/7/2020 4:27:38 PM

Amounts Expressed in Whole Dollars	Food Service (51)	Child Care Operations (52)	Other Enterprise (58)	TOTAL	Internal Service (60)
<b>Liabilities And Deferred Inflows Of Resources And Net Position</b>					
<b>Current Liabilities</b>					
0400 Due to Other Funds	719,643			719,643	
0411 Due to Other Governments					
0413 Due to Component Unit					
0420 Accounts Payable	24,678			24,678	
0430 Contracts Payable					
0440 Current Portion of Long-Term Debt					
0450 Short-Term Payables					
0461 Accrued Salaries and Benefits					
0462 Payroll Deductions and Withholding					
0480 Unearned Revenues	4,811			4,811	
0490 Other Current Liabilities	61,447			61,447	
<b>Total Current Liabilities</b>	<b>\$810,579</b>			<b>\$810,579</b>	
<b>Noncurrent Liabilities</b>					
0510 Bonds Payable					
0520 Extended-Term Financing Agreements Payable					
0530 Lease-Purchase Obligations					
0540 Accumulated Compensated Absences					
0550 Authority Lease Obligations					
0560 Other Post-Employment Benefits (OPEB)					
0570 Net Pension Liability					
0599 Other Noncurrent Liabilities					
<b>Total Noncurrent Liabilities</b>					
<b>Total Liabilities</b>	<b>\$810,579</b>			<b>\$810,579</b>	
0950 Deferred Inflows of Resources					
<b>Net Position</b>					
0791 Net Investment in Capital Assets	423,109			423,109	
0008 Restricted Net Position (0792 – 0798)					5,436,298
0799 Unrestricted Net Position	353,957			353,957	
<b>Total Net Position</b>	<b>\$777,066</b>			<b>\$777,066</b>	<b>\$5,436,298</b>
<b>Total Liabilities And Deferred Inflows Of Resources And Net Position</b>	<b>\$1,587,645</b>			<b>\$1,587,645</b>	<b>\$5,436,298</b>

Amounts Expressed in Whole Dollars	<u>Food Service</u> <u>(51)</u>	<u>Child Care Operations</u> <u>(52)</u>	<u>Other Enterprise</u> <u>(58)</u>	<u>TOTAL</u>	<u>Internal Service</u> <u>(60)</u>
<b>Operating Revenues</b>					
6600 Food Service Revenue	1,342,416			1,342,416	
0071 Charges for Services					
0072 Other Operating Revenue	8,197			8,197	
<b>Total Operating Revenues</b>	<b>\$1,350,613</b>			<b>\$1,350,613</b>	
<b>Operating Expenses</b>					
100 Personnel Services – Salaries	649,163			649,163	
200 Personnel Services – Employee Benefits	474,767			474,767	
300 Purchased Professional and Technical Services					
400 Purchased Property Services					
500 Other Purchased Services	1,066,620			1,066,620	
600 Supplies	161,083			161,083	
740 Depreciation	46,799			46,799	
810 Dues and Fees					
890 Miscellaneous Expenditures					
<b>Total Operating Expenses</b>	<b>\$2,398,432</b>			<b>\$2,398,432</b>	
<b>Operating Income (Loss)</b>	<b>(\$1,047,819)</b>			<b>(\$1,047,819)</b>	
<b>Non Operating Revenues (Expenses)</b>					
6500 Earnings on Investments	18,764			18,764	127,041
6920 Contributions and Donations from Private Sources					
6930 Gains or Losses on Sale of Fixed Assets					
6991 Refunds of a Prior Year Expenditure					
7000 Revenue from State Sources	183,240			183,240	
8000 Revenue from Federal Sources	832,624			832,624	
9990 Insurance Recoveries					
820 Claims and Judgments Against the LEA					
830 Interest					
<b>TOTAL Non Operating Revenues (Expenses)</b>	<b>\$1,034,628</b>			<b>\$1,034,628</b>	<b>\$127,041</b>
<b>Income (Loss) Before Contributions And Transfers</b>	<b>(\$13,191)</b>			<b>(\$13,191)</b>	<b>\$127,041</b>

Amounts Expressed in Whole Dollars	<u>Food Service</u> <u>(51)</u>	<u>Child Care Operations</u> <u>(52)</u>	<u>Other Enterprise</u> <u>(58)</u>	<u>TOTAL</u>	<u>Internal Service</u> <u>(60)</u>
<b>Contributions, Transfers, and Special and Extraordinary Items</b>					
5200 Interfund Transfers – Out					
5300 Transfers Out to Component Units/Primary Governments					
5520 Special Items – Losses					
5530 Extraordinary Items – Losses					
9300 Interfund Transfers - IN					
9500 Capital Contributions					
9700 Transfers IN From Component Units/Primary Governments					
9920 Special Items – Gains					
9930 Extraordinary Items – Gains					
<b>Change In Net Position</b>	<b>(\$13,191)</b>			<b>(\$13,191)</b>	<b>\$127,041</b>
0002 Net Position - Beginning of Fiscal Year	790,257			790,257	5,309,257
0003 Accounting Changes / Residual Equity Transfers					
<b>Net Position - End Of Year</b>	<b>\$777,066</b>			<b>\$777,066</b>	<b>\$5,436,298</b>

LEA : 101631703      Canon-McMillan SD

Printed 5/7/2020 4:27:49 PM

Amounts Expressed in Whole Dollars	Food Service (51)	Child Care Operations (52)	Other Enterprise (58)	TOTAL	Internal Service(60)
<b>Cash Flows From Operating Activities</b>					
0011 Cash Receipts From Users	1,386,624			1,386,624	
0012 Cash Receipts From Assessments Made to Other Funds					
0013 Cash Receipts From Earnings on Investments					
0014 Cash Receipts From Other Operating Revenue					
0015 Cash Payments To Employees For Services	978,086			978,086	
0016 Cash Payments For Insurance Claims					
0017 Cash Payments To Suppliers For Goods and Services	1,133,218			1,133,218	
0018 Cash Payments For Other Operating Expenses					
<b>Net Cash Provided By (Used For) Operating Activities</b>	<b>(\$724,680)</b>			<b>(\$724,680)</b>	
<b>Cash Flows From Non-Capital Financing Activities</b>					
0021 Receipts From Local Sources - 6000					
0022 Receipts From State Sources - 7000	192,056			192,056	
0023 Receipts From Federal Sources -8000	782,400			782,400	
0024 Notes and Loans Received (Repaid)					
0025 Interest Paid on Notes/Loans - 5100-830					
0026 Operating Transfers In (Out)/Residual Equity Trans					
0027 Operating Transfers In (Out) Primary Government / Comp Unit					
0028 Receipts From Refund of Prior Year Expenditures - 6991					
0029 Special and Extraordinary Gains (losses)					
0030 Receipts from Insurance Recoveries -9990					
<b>Net Cash Prov By (Used for) Non-Capital Financing Activities</b>	<b>\$974,456</b>			<b>\$974,456</b>	
<b>Cash Flows From Capital and Related Financing Activities</b>					
0031 Payments For Fac Acq, Const, and Imp - 4000	(11,664)			(11,664)	
0032 Gain / (Loss) on Sale of Fixed Assets - 6930					
0033 Proceeds From Extended Term Financing - 9200					
0034 Principal Paid on Financing Agreements					
0035 Interest Paid on Financing Agreements - 5100-830					
0036 (Inc) Dec in Contributed Capital					
<b>Net Cash Prov By (Used for) Capital and Related Financing Activities</b>	<b>(\$11,664)</b>			<b>(\$11,664)</b>	
<b>Cash Flows From Investing Activities</b>					
0041 Earnings on Investments - 6500	18,764			18,764	127,041
0042 Purchase of Inv Securities / Deposits to Inv Pools					(127,041)
0043 Receipts From Investment Pool Withdrawals	(135,798)			(135,798)	
0044 Proceeds from Sale and Maturity of Inv Securities					

LEA : 101631703     Canon-McMillan SD

Printed 5/7/2020 4:27:49 PM

0045   Loans Received (Paid)

Net Cash Prov By (Used for) Investing Activities	(\$117,034)	(\$117,034)
--	-------------	-------------



LEA : 101631703      Canon-McMillan SD

Printed 5/7/2020 4:27:49 PM

	Food Service (51)	Child Care Operations (52)	Other Enterprise (58)	TOTAL	Internal Service (60)
<b>Net Increase (Decrease) in Cash Flows</b>	121,078			121,078	
0004 Cash and Cash Equivalents Beginning of Year	462,480			462,480	
<b>Cash and Cash Equivalents at Year End</b>	<b>\$583,558</b>			<b>\$583,558</b>	
<b>Reconciliation of Operating Income (Loss) To Net Cash Provided by (Used For) Operating Activities</b>					
0005 Operating Income (Loss) per REP	(1,047,819)			(1,047,819)	
<b>Adjustments</b>					
0051 Depreciation and Net Amortization	46,799			46,799	
0052 Provision for Uncollectible Accounts	147,922			147,922	
0053 Other Adjustments					
<b>Effect of Changes in Assets, Liabilities, Deferred Outflows and Deferred Inflows</b>					
0054 (Inc) Dec In Accounts Receivable (0120-0150)	36,011			36,011	
0055 Advances to Other Funds (0160)	145,844			145,844	
0056 (Inc) Dec in Inventories (0170)	19,367			19,367	
0057 (Inc) Dec in Prepaid Expenses (0180)					
0058 (Inc) Dec in Other Current or Noncurrent Assets					
0064 Deferred Outflows (0910)					
0059 Inc (Dec) in Accounts Payable (0400-0450)	106			106	
0060 Inc (Dec) in Accrued Salaries/Benefits (0461)					
0065 Inc (Dec) in Net Pension Liabilities (0570)					
0066 Inc (Dec) in Other Postemp Benefit Oblig (0560)					
0061 Inc (Dec) in Payroll Deductions/Withholding (0462)					
0062 Inc (Dec) in Unearned Revenue (0480)	(19,366)			(19,366)	
0063 Inc (Dec) in Other Current or Noncurrent Liabilities	(53,544)			(53,544)	
0067 Deferred Inflows (0950)					
<b>Total Adjustments</b>	<b>\$323,139</b>			<b>\$323,139</b>	
<b>Cash Provided By (Used for) Total</b>	<b>(\$724,680)</b>			<b>(\$724,680)</b>	

COMBINED STATEMENT OF CASH FLOWS  
SCHEDULE OF NONCASH INVESTING, CAPITAL, AND FINANCING ACTIVITIES

Explanation of Transaction and Balance Sheet Effect	Amount
Total	

LEA : 101631703     Canon-McMillan SD

Printed 5/7/2020 4:27:51 PM

Amounts Expressed in Whole Dollars	<u>Private Purpose Trust</u> <u>(71)</u>	<u>Investment Trust</u> <u>(72)</u>	<u>Pension Trust</u> <u>(73)</u>	<u>Activity</u> <u>(81)</u>
<b>Assets And Deferred Outflows Of Resources</b>				
<b>Assets</b>				
0100 Cash and Cash Equivalents	255,250			
0110 Investments				
0130 Due From Other Funds				
0147 Due from Component Unit				
0150 Other Receivables				
0170 Inventories				
0180 Prepaid Expenses (Expenditures)				
0190 Other Current Assets				
0220 Buildings and Building Improvements (Net)				
0230 Machinery, Equipment and Furniture (Net)				
<b>Total Assets</b>	<b>\$255,250</b>			
0910 Deferred Outflows of Resources				
<b>Total Assets And Deferred Outflows Of Resources</b>	<b>\$255,250</b>			

LEA : 101631703     Canon-McMillan SD

Printed 5/7/2020 4:27:51 PM

Amounts Expressed in Whole Dollars		<u>Other Agency</u> <u>(89)</u>	<u>Discrete Component Units</u> <u>(98)</u>	<u>Discrete Component Units</u> <u>(99)</u>	<u>Total Fiduciary Funds</u>
<b>Assets And Deferred Outflows Of Resources</b>					
<b>Assets</b>					
0100	Cash and Cash Equivalents				255,250
0110	Investments				
0130	Due From Other Funds				
0147	Due from Component Unit				
0150	Other Receivables				
0170	Inventories				
0180	Prepaid Expenses (Expenditures)				
0190	Other Current Assets				
0220	Buildings and Building Improvements (Net)				
0230	Machinery, Equipment and Furniture (Net)				
<b>Total Assets</b>					<b>\$255,250</b>
0910	Deferred Outflows of Resources				
<b>Total Assets And Deferred Outflows Of Resources</b>					<b>\$255,250</b>

LEA : 101631703     Canon-McMillan SD

Printed 5/7/2020 4:27:51 PM

Amounts Expressed in Whole Dollars	<u>Private Purpose Trust</u> (71)	<u>Investment Trust</u> (72)	<u>Pension Trust</u> (73)	<u>Activity</u> (81)
<b>Liabilities, Deferred Inflows Of Resources And Net Position</b>				
<b>Liabilities</b>				
0400 Due to Other Funds				
0411 Due to Other Governments				
0412 Due to Primary Government				
0413 Due to Component Unit				
0420 Accounts Payable	2,018			
0430 Contracts Payable				
0450 Short-Term Payables				
0461 Accrued Salaries and Benefits				
0462 Payroll Deductions and Withholding				
0480 Unearned Revenues				
0490 Other Current Liabilities	253,232			
<b>Total Liabilities</b>	<b>\$255,250</b>			
0950 Deferred Inflows of Resources				
<b>Net Position</b>				
0791 Net Investment in Capital Assets				
0009 Restricted Net Position (0792 – 0798)				
0799 Unrestricted Net Position				
<b>Total Net Position</b>				
<b>Total Liabilities, Deferred Inflows Of Resources And Net Position</b>	<b>\$255,250</b>			



LEA : 101631703     Canon-McMillan SD

Printed 5/7/2020 4:27:51 PM

Amounts Expressed in Whole Dollars		<u>Other Agency</u> <u>(89)</u>	<u>Discrete Component Units</u> <u>(98)</u>	<u>Discrete Component Units</u> <u>(99)</u>	<u>Total Fiduciary Funds</u>
<b>Liabilities, Deferred Inflows Of Resources And Net Position</b>					
<b>Liabilities</b>					
0400	Due to Other Funds				
0411	Due to Other Governments				
0412	Due to Primary Government				
0413	Due to Component Unit				
0420	Accounts Payable				2,018
0430	Contracts Payable				
0450	Short-Term Payables				
0461	Accrued Salaries and Benefits				
0462	Payroll Deductions and Withholding				
0480	Unearned Revenues				
0490	Other Current Liabilities				253,232
<b>Total Liabilities</b>					<b>\$255,250</b>
0950	Deferred Inflows of Resources				
<b>Net Position</b>					
0791	Net Investment in Capital Assets				
0009	Restricted Net Position (0792 – 0798)				
0799	Unrestricted Net Position				
<b>Total Net Position</b>					
<b>Total Liabilities, Deferred Inflows Of Resources And Net Position</b>					<b>\$255,250</b>

	Revenue Reported In Current Year	Current Year Tax Accrual	Prior Year Tax Accrual	Taxes Collected In Current Year
<b>Revenue from Local Sources</b>				
6111 Current Real Estate Taxes	48,939,833.54			48,939,833.54
6112 Interim Real Estate Taxes	211,324.62			211,324.62
6113 Public Utility Realty Taxes	55,750.29			55,750.29
6114 Payments in Lieu of Current Taxes - State / Local	31,803.67			31,803.67
6143 Current Act 511 Local Services Taxes	119,157.61			119,157.61
6151 Current Act 511 Earned Income Taxes	6,862,546.57			6,862,546.57
6153 Current Act 511 Real Estate Transfer Taxes	1,759,917.97			1,759,917.97
6411 Delinquent Real Estate Taxes	1,529,552.15			1,529,552.15
6500 Earnings on Investments	473,532.58			
6700 Revenues from LEA Activities	83,229.24			
6831 Federal Revenue Received from Other Pennsylvania Public LEAs	39,264.12			
6832 Federal IDEA Revenue Received as Pass Through	879,444.00			
6910 Rentals	86,624.30			
6920 Contributions and Donations from Private Sources	54,047.94			
6941 Regular Day School Tuition	8,936.64			
6942 Summer School Tuition	65,480.00			
6944 Receipts from Other LEAs in Pennsylvania - Education	988,533.64			
6961 Transportation Services Provided Other Pennsylvania LEAs	10,711.50			
6991 Refunds of a Prior Year Expenditure	123,879.80			
6992 Energy Efficiency Revenues and Incentives	91,716.66			
6999 Other Revenues Not Specified Above	153,408.90			
<b>TOTAL Revenue from Local Sources</b>	<b>\$62,568,695.74</b>			<b>\$59,509,886.42</b>

	Revenue Reported In Current Year			
<b>Revenue from State Sources</b>				
7110 Basic Education Funding	11,682,605.67			
7160 Tuition for Orphans Subsidy	1,998.88			
7271 Special Education funds for School-Aged Pupils	2,236,356.78			
7299 Program Revenues Not Listed Previously in the 7200 Series	959.39			
7311 Pupil Transportation Subsidy	957,932.07			
7312 Nonpublic and Charter School Pupil Transportation Subsidy	153,615.00			
7320 Rental and Sinking Fund Payments / Building Reimbursement Subsidy	993,378.45			
7330 Health Services (Medical, Dental, Nurse, Act 25)	100,464.14			
7340 State Property Tax Reduction Allocation	926,962.73			
7361 School Safety and Security Grants	27,024.14			
7505 Ready to Learn Block Grant	537,616.00			
7506 PAsmart Grants	8,235.28			
7810 State Share of Social Security and Medicare Taxes	1,255,656.20			
7820 State Share of Retirement Contributions	5,430,743.92			
<b>TOTAL Revenue from State Sources</b>	<b>\$24,313,548.65</b>			

	Revenue Reported In Current Year			
<b><u>Revenue from Federal Sources</u></b>				
8514 NCLB, Title I - Improving the Academic Achievement of the Disadvantaged	428,818.75			
8515 NCLB, Title II - Preparing, Training and Recruiting High Quality Teachers and Principals	136,101.47			
8517 NCLB, Title IV - 21St Century Schools	27,076.51			
8810 School-Based Access Medicaid Reimbursement Program (SBAP) Reimbursements (Access)	12,246.00			
8820 Medical Assistance Reimbursement for Administrative Claiming (Quarterly) Program	6,598.16			
<b>TOTAL Revenue from Federal Sources</b>	<b>\$610,840.89</b>			

	Revenue Reported In Current Year			
<b><u>Other Financing Sources</u></b>				
9400 Sale of or Compensation for Loss of Fixed Assets	9,858.92			
9990 Insurance Recoveries	26,500.23			
<b>TOTAL Other Financing Sources</b>	<b>\$36,359.15</b>			
<b>TOTAL FROM ALL SOURCES</b>	<b>\$87,529,444.43</b>			<b>\$59,509,886.42</b>

Revenue from Local Sources	62,568,695.74
Revenue from State Sources	24,313,548.65
Revenue from Federal Sources	610,840.89
Other Financing Sources	36,359.15
<b>TOTAL FROM ALL SOURCES</b>	<b>\$87,529,444.43</b>

LEA : 101631703      Canon-McMillan SD

Printed 5/7/2020 4:28:01 PM

General Fund (10)

1000 Instruction	Total
<b>100 <u>Personnel Services – Salaries</u></b> 100 Personnel Services – Salaries	22,186,805.40
<b>Total Personnel Services – Salaries</b>	<b>\$22,186,805.40</b>
<b>200 <u>Personnel Services – Employee Benefits</u></b> 210 Group Insurance – Contracted Provider 220 Social Security Contributions 230 PSERS Retirement Contributions 250 Unemployment Compensation 260 Workers' Compensation 280 Other Post-Employment Benefits (OPEB) 291 Other Retirement Plans	5,629,407.69 1,669,635.79 7,391,681.00 736.65 184,803.61 80,724.44 89,650.40
<b>Total Personnel Services – Employee Benefits</b>	<b>\$15,046,639.58</b>
<b>300 <u>Purchased Professional and Technical Services</u></b> 322 Professional Educational Services – Ius 329 Professional Educational Services – Other 330 Other Professional Services 360 Employee Training and Development Services 390 Other Purchased Professional and Technical Services	1,651,578.00 350.00 2,897.48 2,391.84 24,870.22
<b>Total Purchased Professional and Technical Services</b>	<b>\$1,682,087.54</b>
<b>400 <u>Purchased Property Services</u></b> 430 Repairs and Maintenance Services	14,628.08
<b>Total Purchased Property Services</b>	<b>\$14,628.08</b>
<b>500 <u>Other Purchased Services</u></b> 510 Student Transportation Services 550 Printing and Binding 561 Tuition To Other School Districts Within the State 562 Tuition To Pennsylvania Charter Schools 564 Tuition To Career and Technology Centers 567 Tuition To Approved Private Schools (APS) and PA Chartered Schools for the Deaf and Blind 568 Tuition To Private Residential Rehabilitative Institutions (PRRI) [In-State] and Detention Centers 580 Travel 594 IU Payment By Withholding for Institutionalized Children's Programs – Special Classes 599 Other Miscellaneous Purchased Services	2,000.00 11,900.37 65,882.72 1,849,677.12 774,115.86 469,214.76 1,400,451.23 39,295.25 1,062.12 3,129.51
<b>Total Other Purchased Services</b>	<b>\$4,616,728.94</b>
<b>600 <u>Supplies</u></b> 610 General Supplies 640 Books and Periodicals 650 Supplies & Fees – Technology Related	516,257.07 208,654.82 92,443.27
<b>Total Supplies</b>	<b>\$817,355.16</b>
<b>700 <u>Property</u></b> 752 Capital Equipment – Original and Additional 756 Capitalized Technology Equipment – Original 758 Capitalized Technology Software - Original	280,781.66 14,434.75 16,000.00

LEA : 101631703     Canon-McMillan SD

Printed 5/7/2020 4:28:01 PM

General Fund (10)

1000 Instruction		<u>Total</u>
Total Property		\$311,216.41
800 <u>Other Objects</u>		
810 Dues and Fees		7,438.05
Total Other Objects		\$7,438.05
Total 1000 Instruction		\$44,682,899.16



LEA : 101631703     Canon-McMillan SD

Printed 5/7/2020 4:28:01 PM

General Fund (10)

1100 Regular Programs – Elementary / Secondary	Elementary	Secondary	Federal	Total
<b>100 Personnel Services – Salaries</b>				
100 Personnel Services – Salaries	9,366,271.95	6,825,952.81	293,356.45	16,485,581.21
<b>Total Personnel Services – Salaries</b>	<b>\$9,366,271.95</b>	<b>\$6,825,952.81</b>	<b>\$293,356.45</b>	<b>\$16,485,581.21</b>
<b>200 Personnel Services – Employee Benefits</b>				
210 Group Insurance – Contracted Provider	2,309,377.22	1,498,159.20	88,263.94	3,895,800.36
220 Social Security Contributions	705,120.81	515,173.40	21,885.58	1,242,179.79
230 PSERS Retirement Contributions	3,124,568.12	2,273,551.00	98,068.92	5,496,188.04
250 Unemployment Compensation		736.65		736.65
260 Workers' Compensation	77,950.71	56,801.72	2,433.32	137,185.75
280 Other Post-Employment Benefits (OPEB)	30,851.66	38,060.40		68,912.06
291 Other Retirement Plans	37,715.00	32,025.40		69,740.40
<b>Total Personnel Services – Employee Benefits</b>	<b>\$6,285,583.52</b>	<b>\$4,414,507.77</b>	<b>\$210,651.76</b>	<b>\$10,910,743.05</b>
<b>300 Purchased Professional and Technical Services</b>				
322 Professional Educational Services – Ius	176,823.14	62,970.66		239,793.80
329 Professional Educational Services – Other		350.00		350.00
330 Other Professional Services	2,848.00			2,848.00
<b>Total Purchased Professional and Technical Services</b>	<b>\$179,671.14</b>	<b>\$63,320.66</b>		<b>\$242,991.80</b>
<b>400 Purchased Property Services</b>				
430 Repairs and Maintenance Services	1,332.88	10,237.32		11,570.20
<b>Total Purchased Property Services</b>	<b>\$1,332.88</b>	<b>\$10,237.32</b>		<b>\$11,570.20</b>
<b>500 Other Purchased Services</b>				
550 Printing and Binding	6,162.14	5,738.23		11,900.37
561 Tuition To Other School Districts Within the State		49,377.37		49,377.37
562 Tuition To Pennsylvania Charter Schools	304,654.41	905,538.98		1,210,193.39
568 Tuition To Private Residential Rehabilitative Institutions (PRRI) [In-State] and Detention Centers	9,765.55	9,765.55		19,531.10
580 Travel	6,463.74	30,329.02	182.20	36,974.96
599 Other Miscellaneous Purchased Services	3,129.51			3,129.51
<b>Total Other Purchased Services</b>	<b>\$330,175.35</b>	<b>\$1,000,749.15</b>	<b>\$182.20</b>	<b>\$1,331,106.70</b>
<b>600 Supplies</b>				
610 General Supplies	270,334.60	138,486.41	14,729.39	423,550.40
640 Books and Periodicals	97,222.21	96,322.13		193,544.34
650 Supplies & Fees – Technology Related	40,584.77	34,862.50		75,447.27
<b>Total Supplies</b>	<b>\$408,141.58</b>	<b>\$269,671.04</b>	<b>\$14,729.39</b>	<b>\$692,542.01</b>
<b>700 Property</b>				
752 Capital Equipment – Original and Additional	122,153.52	148,577.31		270,730.83
756 Capitalized Technology Equipment – Original		9,990.00	4,444.75	14,434.75
758 Capitalized Technology Software - Original			16,000.00	16,000.00
<b>Total Property</b>	<b>\$122,153.52</b>	<b>\$158,567.31</b>	<b>\$20,444.75</b>	<b>\$301,165.58</b>
<b>800 Other Objects</b>				
810 Dues and Fees	828.00			828.00
<b>Total Other Objects</b>	<b>\$828.00</b>			<b>\$828.00</b>
<b>Total 1100 Regular Programs – Elementary / Secondary</b>	<b>\$16,694,157.94</b>	<b>\$12,743,006.06</b>	<b>\$539,364.55</b>	<b>\$29,976,528.55</b>

LEA : 101631703     Canon-McMillan SD

Printed 5/7/2020 4:28:01 PM

General Fund (10)

1110 Regular Programs

	Elementary	Secondary	Federal	Total
<b>100 <u>Personnel Services – Salaries</u></b>				
100 Personnel Services – Salaries	9,366,271.95	6,825,952.81	69,466.57	16,261,691.33
<b>Total Personnel Services – Salaries</b>	<b>\$9,366,271.95</b>	<b>\$6,825,952.81</b>	<b>\$69,466.57</b>	<b>\$16,261,691.33</b>
<b>200 <u>Personnel Services – Employee Benefits</u></b>				
210 Group Insurance – Contracted Provider	2,309,377.22	1,498,159.20	17,029.88	3,824,566.30
220 Social Security Contributions	705,120.81	515,173.40	5,191.16	1,225,485.37
230 PSERS Retirement Contributions	3,124,568.12	2,273,551.00	23,222.60	5,421,341.72
250 Unemployment Compensation		736.65		736.65
260 Workers' Compensation	77,950.71	56,801.72	574.56	135,326.99
280 Other Post-Employment Benefits (OPEB)	30,851.66	38,060.40		68,912.06
291 Other Retirement Plans	37,715.00	32,025.40		69,740.40
<b>Total Personnel Services – Employee Benefits</b>	<b>\$6,285,583.52</b>	<b>\$4,414,507.77</b>	<b>\$46,018.20</b>	<b>\$10,746,109.49</b>
<b>300 <u>Purchased Professional and Technical Services</u></b>				
322 Professional Educational Services – Ius	176,823.14	62,970.66		239,793.80
329 Professional Educational Services – Other		350.00		350.00
330 Other Professional Services	2,848.00			2,848.00
<b>Total Purchased Professional and Technical Services</b>	<b>\$179,671.14</b>	<b>\$63,320.66</b>		<b>\$242,991.80</b>
<b>400 <u>Purchased Property Services</u></b>				
430 Repairs and Maintenance Services	1,332.88	10,237.32		11,570.20
<b>Total Purchased Property Services</b>	<b>\$1,332.88</b>	<b>\$10,237.32</b>		<b>\$11,570.20</b>
<b>500 <u>Other Purchased Services</u></b>				
550 Printing and Binding	6,162.14	5,738.23		11,900.37
561 Tuition To Other School Districts Within the State		49,377.37		49,377.37
562 Tuition To Pennsylvania Charter Schools	304,654.41	905,538.98		1,210,193.39
568 Tuition To Private Residential Rehabilitative Institutions (PRRI) [In-State] and Detention Centers	9,765.55	9,765.55		19,531.10
580 Travel	6,463.74	30,329.02		36,792.76
599 Other Miscellaneous Purchased Services	3,129.51			3,129.51
<b>Total Other Purchased Services</b>	<b>\$330,175.35</b>	<b>\$1,000,749.15</b>		<b>\$1,330,924.50</b>
<b>600 <u>Supplies</u></b>				
610 General Supplies	270,334.60	138,486.41		408,821.01
640 Books and Periodicals	97,222.21	96,322.13		193,544.34
650 Supplies & Fees – Technology Related	40,584.77	34,862.50		75,447.27
<b>Total Supplies</b>	<b>\$408,141.58</b>	<b>\$269,671.04</b>		<b>\$677,812.62</b>
<b>700 <u>Property</u></b>				
752 Capital Equipment – Original and Additional	122,153.52	148,577.31		270,730.83
756 Capitalized Technology Equipment – Original		9,990.00		9,990.00
<b>Total Property</b>	<b>\$122,153.52</b>	<b>\$158,567.31</b>		<b>\$280,720.83</b>
<b>800 <u>Other Objects</u></b>				
810 Dues and Fees	828.00			828.00
<b>Total Other Objects</b>	<b>\$828.00</b>			<b>\$828.00</b>
<b>Total 1110 Regular Programs</b>	<b>\$16,694,157.94</b>	<b>\$12,743,006.06</b>	<b>\$115,484.77</b>	<b>\$29,552,648.77</b>

LEA : 101631703      Canon-McMillan SD

Printed 5/7/2020 4:28:01 PM

<b>General Fund (10)</b>				
<b>1190 Federally-Funded Regular Programs</b>	<b><u>Elementary</u></b>	<b><u>Secondary</u></b>	<b><u>Federal</u></b>	<b><u>Total</u></b>
<b>100 <u>Personnel Services – Salaries</u></b>				
100 Personnel Services – Salaries			223,889.88	223,889.88
<b>Total Personnel Services – Salaries</b>			<b>\$223,889.88</b>	<b>\$223,889.88</b>
<b>200 <u>Personnel Services – Employee Benefits</u></b>				
210 Group Insurance – Contracted Provider			71,234.06	71,234.06
220 Social Security Contributions			16,694.42	16,694.42
230 PSERS Retirement Contributions			74,846.32	74,846.32
260 Workers' Compensation			1,858.76	1,858.76
<b>Total Personnel Services – Employee Benefits</b>			<b>\$164,633.56</b>	<b>\$164,633.56</b>
<b>500 <u>Other Purchased Services</u></b>				
580 Travel			182.20	182.20
<b>Total Other Purchased Services</b>			<b>\$182.20</b>	<b>\$182.20</b>
<b>600 <u>Supplies</u></b>				
610 General Supplies			14,729.39	14,729.39
<b>Total Supplies</b>			<b>\$14,729.39</b>	<b>\$14,729.39</b>
<b>700 <u>Property</u></b>				
756 Capitalized Technology Equipment – Original			4,444.75	4,444.75
758 Capitalized Technology Software - Original			16,000.00	16,000.00
<b>Total Property</b>			<b>\$20,444.75</b>	<b>\$20,444.75</b>
<b>Total 1190 Federally-Funded Regular Programs</b>			<b>\$423,879.78</b>	<b>\$423,879.78</b>

LEA : 101631703      Canon-McMillan SD

Printed 5/7/2020 4:28:01 PM

<b>General Fund (10)</b>				
<b>1200 Special Programs – Elementary / Secondary</b>	<b><u>Elementary</u></b>	<b><u>Secondary</u></b>	<b><u>Federal</u></b>	<b><u>Total</u></b>
<b>100 <u>Personnel Services – Salaries</u></b>				
100 Personnel Services – Salaries	2,956,326.08	1,593,182.36	43,650.00	4,593,158.44
<b>Total Personnel Services – Salaries</b>	<b>\$2,956,326.08</b>	<b>\$1,593,182.36</b>	<b>\$43,650.00</b>	<b>\$4,593,158.44</b>
<b>200 <u>Personnel Services – Employee Benefits</u></b>				
210 Group Insurance – Contracted Provider	1,057,096.81	407,184.06	14,522.30	1,478,803.17
220 Social Security Contributions	220,860.69	119,747.35	3,262.47	343,870.51
230 PSERS Retirement Contributions	980,157.92	530,315.79	14,592.19	1,525,065.90
260 Workers' Compensation	24,758.49	13,287.77	362.44	38,408.70
280 Other Post-Employment Benefits (OPEB)	5,464.44			5,464.44
291 Other Retirement Plans	14,442.50	5,467.50		19,910.00
<b>Total Personnel Services – Employee Benefits</b>	<b>\$2,302,780.85</b>	<b>\$1,076,002.47</b>	<b>\$32,739.40</b>	<b>\$3,411,522.72</b>
<b>300 <u>Purchased Professional and Technical Services</u></b>				
322 Professional Educational Services – Ius	433,828.38	333,355.30	624,477.52	1,391,661.20
330 Other Professional Services	49.48			49.48
<b>Total Purchased Professional and Technical Services</b>	<b>\$433,877.86</b>	<b>\$333,355.30</b>	<b>\$624,477.52</b>	<b>\$1,391,710.68</b>
<b>400 <u>Purchased Property Services</u></b>				
430 Repairs and Maintenance Services	1,274.99			1,274.99
<b>Total Purchased Property Services</b>	<b>\$1,274.99</b>			<b>\$1,274.99</b>
<b>500 <u>Other Purchased Services</u></b>				
562 Tuition To Pennsylvania Charter Schools	60,416.96	579,066.77		639,483.73
567 Tuition To Approved Private Schools (APS) and PA Chartered Schools for the Deaf and Blind	234,607.38	234,607.38		469,214.76
568 Tuition To Private Residential Rehabilitative Institutions (PRRI) [In-State] and Detention Centers	477,385.45	885,141.95		1,362,527.40
580 Travel	1,696.48	588.81		2,285.29
594 IU Payment By Withholding for Institutionalized Children's Programs – Special Classes	531.06	531.06		1,062.12
<b>Total Other Purchased Services</b>	<b>\$774,637.33</b>	<b>\$1,699,935.97</b>		<b>\$2,474,573.30</b>
<b>600 <u>Supplies</u></b>				
610 General Supplies	29,102.99	14,476.80		43,579.79
640 Books and Periodicals	5,243.27	877.74		6,121.01
650 Supplies & Fees – Technology Related		4,750.00	12,246.00	16,996.00
<b>Total Supplies</b>	<b>\$34,346.26</b>	<b>\$20,104.54</b>	<b>\$12,246.00</b>	<b>\$66,696.80</b>
<b>700 <u>Property</u></b>				
752 Capital Equipment – Original and Additional	2,095.88	7,954.95		10,050.83
<b>Total Property</b>	<b>\$2,095.88</b>	<b>\$7,954.95</b>		<b>\$10,050.83</b>
<b>800 <u>Other Objects</u></b>				
810 Dues and Fees	3,395.50	2,814.55		6,210.05
<b>Total Other Objects</b>	<b>\$3,395.50</b>	<b>\$2,814.55</b>		<b>\$6,210.05</b>
<b>Total 1200 Special Programs – Elementary / Secondary</b>	<b>\$6,508,734.75</b>	<b>\$4,733,350.14</b>	<b>\$713,112.92</b>	<b>\$11,955,197.81</b>

LEA : 101631703      Canon-McMillan SD

Printed 5/7/2020 4:28:01 PM

<b>General Fund (10)</b>				
<b>1210 Life Skills Support</b>	<b><u>Elementary</u></b>	<b><u>Secondary</u></b>	<b><u>Federal</u></b>	<b><u>Total</u></b>
<b>100 <u>Personnel Services – Salaries</u></b>				
100 Personnel Services – Salaries	81,207.98	28,800.00		110,007.98
<b>Total Personnel Services – Salaries</b>	<b>\$81,207.98</b>	<b>\$28,800.00</b>		<b>\$110,007.98</b>
<b>200 <u>Personnel Services – Employee Benefits</u></b>				
210 Group Insurance – Contracted Provider	17,170.02	9,872.28		27,042.30
220 Social Security Contributions	6,102.03	2,128.09		8,230.12
230 PSERS Retirement Contributions	27,147.81	9,627.84		36,775.65
260 Workers' Compensation	675.92	239.17		915.09
<b>Total Personnel Services – Employee Benefits</b>	<b>\$51,095.78</b>	<b>\$21,867.38</b>		<b>\$72,963.16</b>
<b>600 <u>Supplies</u></b>				
610 General Supplies	2,596.60	2,827.80		5,424.40
640 Books and Periodicals	447.24	447.24		894.48
<b>Total Supplies</b>	<b>\$3,043.84</b>	<b>\$3,275.04</b>		<b>\$6,318.88</b>
<b>800 <u>Other Objects</u></b>				
810 Dues and Fees		806.55		806.55
<b>Total Other Objects</b>		<b>\$806.55</b>		<b>\$806.55</b>
<b>Total 1210 Life Skills Support</b>	<b>\$135,347.60</b>	<b>\$54,748.97</b>		<b>\$190,096.57</b>

LEA : 101631703      Canon-McMillan SD

Printed 5/7/2020 4:28:01 PM

General Fund (10)				
1220 Sensory Support	<u>Elementary</u>	<u>Secondary</u>	<u>Federal</u>	<u>Total</u>
100 <u>Personnel Services – Salaries</u>				
100 Personnel Services – Salaries	295,400.53			295,400.53
<b>Total Personnel Services – Salaries</b>	<b>\$295,400.53</b>			<b>\$295,400.53</b>
200 <u>Personnel Services – Employee Benefits</u>				
210 Group Insurance – Contracted Provider	88,000.74			88,000.74
220 Social Security Contributions	22,117.28			22,117.28
230 PSERS Retirement Contributions	98,601.95			98,601.95
260 Workers' Compensation	2,464.19			2,464.19
291 Other Retirement Plans	7,692.50			7,692.50
<b>Total Personnel Services – Employee Benefits</b>	<b>\$218,876.66</b>			<b>\$218,876.66</b>
300 <u>Purchased Professional and Technical Services</u>				
330 Other Professional Services	49.48			49.48
<b>Total Purchased Professional and Technical Services</b>	<b>\$49.48</b>			<b>\$49.48</b>
500 <u>Other Purchased Services</u>				
580 Travel	196.30			196.30
<b>Total Other Purchased Services</b>	<b>\$196.30</b>			<b>\$196.30</b>
600 <u>Supplies</u>				
610 General Supplies	1,867.59			1,867.59
<b>Total Supplies</b>	<b>\$1,867.59</b>			<b>\$1,867.59</b>
800 <u>Other Objects</u>				
810 Dues and Fees	900.00			900.00
<b>Total Other Objects</b>	<b>\$900.00</b>			<b>\$900.00</b>
<b>Total 1220 Sensory Support</b>	<b>\$517,290.56</b>			<b>\$517,290.56</b>

LEA : 101631703      Canon-McMillan SD

Printed 5/7/2020 4:28:01 PM

<b>General Fund (10)</b>				
<b>1230 Emotional Support</b>	<b><u>Elementary</u></b>	<b><u>Secondary</u></b>	<b><u>Federal</u></b>	<b><u>Total</u></b>
<b>100 <u>Personnel Services – Salaries</u></b>				
100 Personnel Services – Salaries	259,293.97	103,053.11	43,650.00	405,997.08
<b>Total Personnel Services – Salaries</b>	<b>\$259,293.97</b>	<b>\$103,053.11</b>	<b>\$43,650.00</b>	<b>\$405,997.08</b>
<b>200 <u>Personnel Services – Employee Benefits</u></b>				
210 Group Insurance – Contracted Provider	114,606.85	35,453.16	14,522.30	164,582.31
220 Social Security Contributions	19,193.95	7,644.56	3,262.47	30,100.98
230 PSERS Retirement Contributions	86,330.91	34,450.64	14,592.19	135,373.74
260 Workers' Compensation	2,175.09	859.66	362.44	3,397.19
<b>Total Personnel Services – Employee Benefits</b>	<b>\$222,306.80</b>	<b>\$78,408.02</b>	<b>\$32,739.40</b>	<b>\$333,454.22</b>
<b>600 <u>Supplies</u></b>				
610 General Supplies	5,591.30			5,591.30
640 Books and Periodicals	934.15			934.15
<b>Total Supplies</b>	<b>\$6,525.45</b>			<b>\$6,525.45</b>
<b>700 <u>Property</u></b>				
752 Capital Equipment – Original and Additional	96.04			96.04
<b>Total Property</b>	<b>\$96.04</b>			<b>\$96.04</b>
<b>Total 1230 Emotional Support</b>	<b>\$488,222.26</b>	<b>\$181,461.13</b>	<b>\$76,389.40</b>	<b>\$746,072.79</b>

LEA : 101631703     Canon-McMillan SD

Printed 5/7/2020 4:28:01 PM

<b>General Fund (10)</b>				
<b>1240 Academic Support</b>	<b><u>Elementary</u></b>	<b><u>Secondary</u></b>	<b><u>Federal</u></b>	<b><u>Total</u></b>
<b>100 <u>Personnel Services – Salaries</u></b>				
100 Personnel Services – Salaries	2,274,490.81	1,461,329.25		3,735,820.06
<b>Total Personnel Services – Salaries</b>	<b>\$2,274,490.81</b>	<b>\$1,461,329.25</b>		<b>\$3,735,820.06</b>
<b>200 <u>Personnel Services – Employee Benefits</u></b>				
210 Group Insurance – Contracted Provider	837,319.20	361,858.62		1,199,177.82
220 Social Security Contributions	169,991.98	109,974.70		279,966.68
230 PSERS Retirement Contributions	752,983.51	486,237.31		1,239,220.82
260 Workers' Compensation	19,055.83	12,188.94		31,244.77
280 Other Post-Employment Benefits (OPEB)	5,464.44			5,464.44
291 Other Retirement Plans	6,750.00	5,467.50		12,217.50
<b>Total Personnel Services – Employee Benefits</b>	<b>\$1,791,564.96</b>	<b>\$975,727.07</b>		<b>\$2,767,292.03</b>
<b>500 <u>Other Purchased Services</u></b>				
580 Travel	1,276.18	588.81		1,864.99
<b>Total Other Purchased Services</b>	<b>\$1,276.18</b>	<b>\$588.81</b>		<b>\$1,864.99</b>
<b>600 <u>Supplies</u></b>				
610 General Supplies	11,442.85	2,732.00		14,174.85
640 Books and Periodicals	3,861.88	430.50		4,292.38
<b>Total Supplies</b>	<b>\$15,304.73</b>	<b>\$3,162.50</b>		<b>\$18,467.23</b>
<b>800 <u>Other Objects</u></b>				
810 Dues and Fees	1,096.50	609.00		1,705.50
<b>Total Other Objects</b>	<b>\$1,096.50</b>	<b>\$609.00</b>		<b>\$1,705.50</b>
<b>Total 1240 Academic Support</b>	<b>\$4,083,733.18</b>	<b>\$2,441,416.63</b>		<b>\$6,525,149.81</b>



LEA : 101631703      Canon-McMillan SD

Printed 5/7/2020 4:28:01 PM

<b>General Fund (10)</b>				
<b>1241 Learning Support – Public</b>	<u><b>Elementary</b></u>	<u><b>Secondary</b></u>	<u><b>Federal</b></u>	<u><b>Total</b></u>
<b>100 Personnel Services – Salaries</b>				
100 Personnel Services – Salaries	2,158,390.81	1,229,669.25		3,388,060.06
<b>Total Personnel Services – Salaries</b>	<b>\$2,158,390.81</b>	<b>\$1,229,669.25</b>		<b>\$3,388,060.06</b>
<b>200 Personnel Services – Employee Benefits</b>				
210 Group Insurance – Contracted Provider	796,182.36	341,155.38		1,137,337.74
220 Social Security Contributions	161,367.00	92,420.01		253,787.01
230 PSERS Retirement Contributions	714,171.20	408,793.17		1,122,964.37
260 Workers' Compensation	18,091.94	10,265.65		28,357.59
280 Other Post-Employment Benefits (OPEB)	5,464.44			5,464.44
291 Other Retirement Plans	6,750.00	5,467.50		12,217.50
<b>Total Personnel Services – Employee Benefits</b>	<b>\$1,702,026.94</b>	<b>\$858,101.71</b>		<b>\$2,560,128.65</b>
<b>500 Other Purchased Services</b>				
580 Travel	258.18	91.89		350.07
<b>Total Other Purchased Services</b>	<b>\$258.18</b>	<b>\$91.89</b>		<b>\$350.07</b>
<b>600 Supplies</b>				
610 General Supplies	5,343.70	2,365.73		7,709.43
640 Books and Periodicals	3,861.88	430.50		4,292.38
<b>Total Supplies</b>	<b>\$9,205.58</b>	<b>\$2,796.23</b>		<b>\$12,001.81</b>
<b>Total 1241 Learning Support – Public</b>	<b>\$3,869,881.51</b>	<b>\$2,090,659.08</b>		<b>\$5,960,540.59</b>

LEA : 101631703      Canon-McMillan SD

Printed 5/7/2020 4:28:01 PM

General Fund (10)				
1243 Gifted Support	<u>Elementary</u>	<u>Secondary</u>	<u>Federal</u>	<u>Total</u>
100 <u>Personnel Services – Salaries</u>				
100 Personnel Services – Salaries	116,100.00	231,660.00		347,760.00
<b>Total Personnel Services – Salaries</b>	<b>\$116,100.00</b>	<b>\$231,660.00</b>		<b>\$347,760.00</b>
200 <u>Personnel Services – Employee Benefits</u>				
210 Group Insurance – Contracted Provider	41,136.84	20,703.24		61,840.08
220 Social Security Contributions	8,624.98	17,554.69		26,179.67
230 PSERS Retirement Contributions	38,812.31	77,444.14		116,256.45
260 Workers' Compensation	963.89	1,923.29		2,887.18
<b>Total Personnel Services – Employee Benefits</b>	<b>\$89,538.02</b>	<b>\$117,625.36</b>		<b>\$207,163.38</b>
500 <u>Other Purchased Services</u>				
580 Travel	1,018.00	496.92		1,514.92
<b>Total Other Purchased Services</b>	<b>\$1,018.00</b>	<b>\$496.92</b>		<b>\$1,514.92</b>
600 <u>Supplies</u>				
610 General Supplies	6,099.15	366.27		6,465.42
<b>Total Supplies</b>	<b>\$6,099.15</b>	<b>\$366.27</b>		<b>\$6,465.42</b>
800 <u>Other Objects</u>				
810 Dues and Fees	1,096.50	609.00		1,705.50
<b>Total Other Objects</b>	<b>\$1,096.50</b>	<b>\$609.00</b>		<b>\$1,705.50</b>
<b>Total 1243 Gifted Support</b>	<b>\$213,851.67</b>	<b>\$350,757.55</b>		<b>\$564,609.22</b>

LEA : 101631703      Canon-McMillan SD

Printed 5/7/2020 4:28:01 PM

General Fund (10)				
1290 Special Programs - Other Support	Elementary	Secondary	Federal	Total
100 <u>Personnel Services – Salaries</u>				
100 Personnel Services – Salaries	45,932.79			45,932.79
Total Personnel Services – Salaries	\$45,932.79			\$45,932.79
200 <u>Personnel Services – Employee Benefits</u>				
220 Social Security Contributions	3,455.45			3,455.45
230 PSERS Retirement Contributions	15,093.74			15,093.74
260 Workers’ Compensation	387.46			387.46
Total Personnel Services – Employee Benefits	\$18,936.65			\$18,936.65
300 <u>Purchased Professional and Technical Services</u>				
322 Professional Educational Services – Ius	433,828.38	333,355.30	624,477.52	1,391,661.20
Total Purchased Professional and Technical Services	\$433,828.38	\$333,355.30	\$624,477.52	\$1,391,661.20
400 <u>Purchased Property Services</u>				
430 Repairs and Maintenance Services	1,274.99			1,274.99
Total Purchased Property Services	\$1,274.99			\$1,274.99
500 <u>Other Purchased Services</u>				
562 Tuition To Pennsylvania Charter Schools	60,416.96	579,066.77		639,483.73
567 Tuition To Approved Private Schools (APS) and PA Chartered Schools for the Deaf and Blind	234,607.38	234,607.38		469,214.76
568 Tuition To Private Residential Rehabilitative Institutions (PRRI) [In-State] and Detention Centers	477,385.45	885,141.95		1,362,527.40
580 Travel	224.00			224.00
594 IU Payment By Withholding for Institutionalized Children’s Programs – Special Classes	531.06	531.06		1,062.12
Total Other Purchased Services	\$773,164.85	\$1,699,347.16		\$2,472,512.01
600 <u>Supplies</u>				
610 General Supplies	7,604.65	8,917.00		16,521.65
650 Supplies & Fees – Technology Related		4,750.00	12,246.00	16,996.00
Total Supplies	\$7,604.65	\$13,667.00	\$12,246.00	\$33,517.65
700 <u>Property</u>				
752 Capital Equipment – Original and Additional	1,999.84	7,954.95		9,954.79
Total Property	\$1,999.84	\$7,954.95		\$9,954.79
800 <u>Other Objects</u>				
810 Dues and Fees	1,399.00	1,399.00		2,798.00
Total Other Objects	\$1,399.00	\$1,399.00		\$2,798.00
Total 1290 Special Programs - Other Support	\$1,284,141.15	\$2,055,723.41	\$636,723.52	\$3,976,588.08

LEA : 101631703 Canon-McMillan SD

Printed 5/7/2020 4:28:01 PM

General Fund (10)

1300 Vocational Education

	<u>Elementary</u>	<u>Secondary</u>	<u>Federal</u>	<u>Total</u>
<b>100 <u>Personnel Services – Salaries</u></b>				
100 Personnel Services – Salaries		1,030,000.00		1,030,000.00
<b>Total Personnel Services – Salaries</b>		<b>\$1,030,000.00</b>		<b>\$1,030,000.00</b>
<b>200 <u>Personnel Services – Employee Benefits</u></b>				
210 Group Insurance – Contracted Provider		254,804.16		254,804.16
220 Social Security Contributions		77,663.25		77,663.25
230 PSERS Retirement Contributions		344,329.60		344,329.60
260 Workers' Compensation		8,550.86		8,550.86
280 Other Post-Employment Benefits (OPEB)		6,347.94		6,347.94
<b>Total Personnel Services – Employee Benefits</b>		<b>\$691,695.81</b>		<b>\$691,695.81</b>
<b>400 <u>Purchased Property Services</u></b>				
430 Repairs and Maintenance Services		1,782.89		1,782.89
<b>Total Purchased Property Services</b>		<b>\$1,782.89</b>		<b>\$1,782.89</b>
<b>500 <u>Other Purchased Services</u></b>				
564 Tuition To Career and Technology Centers		620,285.86		620,285.86
580 Travel		35.00		35.00
<b>Total Other Purchased Services</b>		<b>\$620,320.86</b>		<b>\$620,320.86</b>
<b>600 <u>Supplies</u></b>				
610 General Supplies		48,353.60		48,353.60
640 Books and Periodicals		8,989.47		8,989.47
<b>Total Supplies</b>		<b>\$57,343.07</b>		<b>\$57,343.07</b>
<b>Total 1300 Vocational Education</b>		<b>\$2,401,142.63</b>		<b>\$2,401,142.63</b>

LEA : 101631703      Canon-McMillan SD

Printed 5/7/2020 4:28:01 PM

<b>General Fund (10)</b>				
<b>1400 Other Instructional Programs – Elementary / Secondary</b>	<b><u>Elementary</u></b>	<b><u>Secondary</u></b>	<b><u>Federal</u></b>	<b><u>Total</u></b>
<b>100 <u>Personnel Services – Salaries</u></b>				
100 Personnel Services – Salaries	23,095.00	54,970.75		78,065.75
<b>Total Personnel Services – Salaries</b>	<b>\$23,095.00</b>	<b>\$54,970.75</b>		<b>\$78,065.75</b>
<b>200 <u>Personnel Services – Employee Benefits</u></b>				
220 Social Security Contributions	1,741.57	4,180.67		5,922.24
230 PSERS Retirement Contributions	7,720.73	18,376.73		26,097.46
260 Workers’ Compensation	194.62	463.68		658.30
<b>Total Personnel Services – Employee Benefits</b>	<b>\$9,656.92</b>	<b>\$23,021.08</b>		<b>\$32,678.00</b>
<b>300 <u>Purchased Professional and Technical Services</u></b>				
390 Other Purchased Professional and Technical Services		24,870.22		24,870.22
<b>Total Purchased Professional and Technical Services</b>		<b>\$24,870.22</b>		<b>\$24,870.22</b>
<b>500 <u>Other Purchased Services</u></b>				
510 Student Transportation Services	1,000.00	1,000.00		2,000.00
561 Tuition To Other School Districts Within the State	3,395.41	13,109.94		16,505.35
564 Tuition To Career and Technology Centers		153,830.00		153,830.00
568 Tuition To Private Residential Rehabilitative Institutions (PRRI) [In-State] and Detention Centers		18,392.73		18,392.73
<b>Total Other Purchased Services</b>	<b>\$4,395.41</b>	<b>\$186,332.67</b>		<b>\$190,728.08</b>
<b>800 <u>Other Objects</u></b>				
810 Dues and Fees	200.00	200.00		400.00
<b>Total Other Objects</b>	<b>\$200.00</b>	<b>\$200.00</b>		<b>\$400.00</b>
<b>Total 1400 Other Instructional Programs – Elementary / Secondary</b>	<b>\$37,347.33</b>	<b>\$289,394.72</b>		<b>\$326,742.05</b>

LEA : 101631703 Canon-McMillan SD

Printed 5/7/2020 4:28:01 PM

General Fund (10)

1420 Summer School

	<u>Elementary</u>	<u>Secondary</u>	<u>Federal</u>	<u>Total</u>
<b>100 <u>Personnel Services – Salaries</u></b>				
100 Personnel Services – Salaries		31,217.00		31,217.00
<b>Total Personnel Services – Salaries</b>		<b>\$31,217.00</b>		<b>\$31,217.00</b>
<b>200 <u>Personnel Services – Employee Benefits</u></b>				
220 Social Security Contributions		2,375.08		2,375.08
230 PSERS Retirement Contributions		10,435.83		10,435.83
260 Workers’ Compensation		263.37		263.37
<b>Total Personnel Services – Employee Benefits</b>		<b>\$13,074.28</b>		<b>\$13,074.28</b>
<b>Total 1420 Summer School</b>		<b>\$44,291.28</b>		<b>\$44,291.28</b>

LEA : 101631703 Canon-McMillan SD

Printed 5/7/2020 4:28:01 PM

General Fund (10)

1430 Homebound Instruction	<u>Elementary</u>	<u>Secondary</u>	<u>Federal</u>	<u>Total</u>
<b>100 <u>Personnel Services – Salaries</u></b>				
100 Personnel Services – Salaries	7,982.50	18,181.50		26,164.00
<b>Total Personnel Services – Salaries</b>	<b>\$7,982.50</b>	<b>\$18,181.50</b>		<b>\$26,164.00</b>
<b>200 <u>Personnel Services – Employee Benefits</u></b>				
220 Social Security Contributions	603.94	1,385.82		1,989.76
230 PSERS Retirement Contributions	2,668.54	6,078.09		8,746.63
260 Workers’ Compensation	67.37	153.42		220.79
<b>Total Personnel Services – Employee Benefits</b>	<b>\$3,339.85</b>	<b>\$7,617.33</b>		<b>\$10,957.18</b>
<b>Total 1430 Homebound Instruction</b>	<b>\$11,322.35</b>	<b>\$25,798.83</b>		<b>\$37,121.18</b>

LEA : 101631703      Canon-McMillan SD

Printed 5/7/2020 4:28:01 PM

General Fund (10)				
1440 Alternative Regular Education Programs	<u>Elementary</u>	<u>Secondary</u>	<u>Federal</u>	<u>Total</u>
300 <u>Purchased Professional and Technical Services</u>				
390 Other Purchased Professional and Technical Services		24,870.22		24,870.22
<b>Total Purchased Professional and Technical Services</b>		<b>\$24,870.22</b>		<b>\$24,870.22</b>
500 <u>Other Purchased Services</u>				
561 Tuition To Other School Districts Within the State	3,395.41	13,109.94		16,505.35
564 Tuition To Career and Technology Centers		153,830.00		153,830.00
568 Tuition To Private Residential Rehabilitative Institutions (PRRI) [In-State] and Detention Centers		18,392.73		18,392.73
<b>Total Other Purchased Services</b>	<b>\$3,395.41</b>	<b>\$185,332.67</b>		<b>\$188,728.08</b>
800 <u>Other Objects</u>				
810 Dues and Fees	200.00	200.00		400.00
<b>Total Other Objects</b>	<b>\$200.00</b>	<b>\$200.00</b>		<b>\$400.00</b>
<b>Total 1440 Alternative Regular Education Programs</b>	<b>\$3,595.41</b>	<b>\$210,402.89</b>		<b>\$213,998.30</b>



LEA : 101631703     Canon-McMillan SD

Printed 5/7/2020 4:28:01 PM

General Fund (10)				
1441 Adjudicated / Court-Placed Programs	<u>Elementary</u>	<u>Secondary</u>	<u>Federal</u>	<u>Total</u>
300 <u>Purchased Professional and Technical Services</u>				
390 Other Purchased Professional and Technical Services		24,870.22		24,870.22
<b>Total Purchased Professional and Technical Services</b>		<b>\$24,870.22</b>		<b>\$24,870.22</b>
500 <u>Other Purchased Services</u>				
561 Tuition To Other School Districts Within the State	3,395.41	13,109.94		16,505.35
568 Tuition To Private Residential Rehabilitative Institutions (PRRI) [In-State] and Detention Centers		18,004.29		18,004.29
<b>Total Other Purchased Services</b>	<b>\$3,395.41</b>	<b>\$31,114.23</b>		<b>\$34,509.64</b>
<b>Total 1441 Adjudicated / Court-Placed Programs</b>	<b>\$3,395.41</b>	<b>\$55,984.45</b>		<b>\$59,379.86</b>

LEA : 101631703     Canon-McMillan SD

Printed 5/7/2020 4:28:01 PM

General Fund (10)				
1442 Alternative Education Programs	<u>Elementary</u>	<u>Secondary</u>	<u>Federal</u>	<u>Total</u>
500 <u>Other Purchased Services</u>				
564 Tuition To Career and Technology Centers		153,830.00		153,830.00
568 Tuition To Private Residential Rehabilitative Institutions (PRRI) [In-State] and Detention Centers		388.44		388.44
Total Other Purchased Services		\$154,218.44		\$154,218.44
800 <u>Other Objects</u>				
810 Dues and Fees	200.00	200.00		400.00
Total Other Objects	\$200.00	\$200.00		\$400.00
Total 1442 Alternative Education Programs	\$200.00	\$154,418.44		\$154,618.44

LEA : 101631703 Canon-McMillan SD

Printed 5/7/2020 4:28:01 PM

General Fund (10)

1450 Instructional Programs Outside the Established School Day	<u>Elementary</u>	<u>Secondary</u>	<u>Federal</u>	<u>Total</u>
100 <u>Personnel Services – Salaries</u>				
100 Personnel Services – Salaries	15,112.50	5,572.25		20,684.75
Total Personnel Services – Salaries	\$15,112.50	\$5,572.25		\$20,684.75
200 <u>Personnel Services – Employee Benefits</u>				
220 Social Security Contributions	1,137.63	419.77		1,557.40
230 PSERS Retirement Contributions	5,052.19	1,862.81		6,915.00
260 Workers’ Compensation	127.25	46.89		174.14
Total Personnel Services – Employee Benefits	\$6,317.07	\$2,329.47		\$8,646.54
500 <u>Other Purchased Services</u>				
510 Student Transportation Services	1,000.00	1,000.00		2,000.00
Total Other Purchased Services	\$1,000.00	\$1,000.00		\$2,000.00
Total 1450 Instructional Programs Outside the Established School Day	\$22,429.57	\$8,901.72		\$31,331.29

LEA : 101631703 Canon-McMillan SD

Printed 5/7/2020 4:28:01 PM

General Fund (10)

1500 Nonpublic School Programs	<u>Elementary</u>	<u>Secondary</u>	<u>Federal</u>	<u>Total</u>
300 <u>Purchased Professional and Technical Services</u>				
322 Professional Educational Services – lus			20,123.00	20,123.00
360 Employee Training and Development Services			2,391.84	2,391.84
Total Purchased Professional and Technical Services			\$22,514.84	\$22,514.84
600 <u>Supplies</u>				
610 General Supplies			773.28	773.28
Total Supplies			\$773.28	\$773.28
Total 1500 Nonpublic School Programs			\$23,288.12	\$23,288.12

LEA : 101631703      Canon-McMillan SD

Printed 5/7/2020 4:28:13 PM

General Fund (10)

2000 Support Services

Total

100	<u>Personnel Services – Salaries</u>	
100	Personnel Services – Salaries	9,702,981.51
<b>Total Personnel Services – Salaries</b>		<b>\$9,702,981.51</b>
200	<u>Personnel Services – Employee Benefits</u>	
210	Group Insurance – Contracted Provider	2,546,854.55
220	Social Security Contributions	725,459.01
230	PSERS Retirement Contributions	3,215,357.81
240	Tuition Reimbursement	83,847.25
250	Unemployment Compensation	934.38
260	Workers' Compensation	81,398.97
280	Other Post-Employment Benefits (OPEB)	5,593.20
291	Other Retirement Plans	24,309.60
<b>Total Personnel Services – Employee Benefits</b>		<b>\$6,683,754.77</b>
300	<u>Purchased Professional and Technical Services</u>	
322	Professional Educational Services – Ius	403,575.37
329	Professional Educational Services – Other	370,756.27
330	Other Professional Services	1,492,288.04
340	Technical Services	21,109.85
350	Security / Safety Services	312,444.80
360	Employee Training and Development Services	44,102.51
<b>Total Purchased Professional and Technical Services</b>		<b>\$2,644,276.84</b>
400	<u>Purchased Property Services</u>	
410	Cleaning Services	113,051.48
420	Utility Services	212,029.05
430	Repairs and Maintenance Services	387,321.16
440	Rentals	269,792.78
460	Extermination Services	6,701.56
<b>Total Purchased Property Services</b>		<b>\$988,896.03</b>
500	<u>Other Purchased Services</u>	
513	Contracted Carriers	2,784,781.90
516	Student Transportation Services From the IU	93,709.51
520	Insurance – General	23,707.50
521	Fire Insurance	74,520.00
522	Automotive Liability Insurance	79,074.00
523	General Property and Liability Insurance	75,836.00
529	Other Insurance	685.00
530	Communications	254,075.94
549	Other Advertising/Public Relations	21,586.93
550	Printing and Binding	3,134.98
580	Travel	59,914.49
595	IU Payments By Withholding	87,821.18
<b>Total Other Purchased Services</b>		<b>\$3,558,847.43</b>
600	<u>Supplies</u>	
610	General Supplies	600,050.97

LEA : 101631703     Canon-McMillan SD

Printed 5/7/2020 4:28:13 PM

General Fund (10)

2000 Support Services

Total

600 <u>Supplies</u>	
620 Energy	1,427,045.80
630 Food	4,167.32
640 Books and Periodicals	37,186.66
650 Supplies & Fees – Technology Related	110,669.23
<b>Total Supplies</b>	<b>\$2,179,119.98</b>
700 <u>Property</u>	
752 Capital Equipment – Original and Additional	364,343.07
762 Capitalized Equipment - Replacement	318,359.99
<b>Total Property</b>	<b>\$682,703.06</b>
800 <u>Other Objects</u>	
810 Dues and Fees	72,338.67
890 Miscellaneous Expenditures	34,502.20
899 Pass-Through Funds	1,021,433.97
<b>Total Other Objects</b>	<b>\$1,128,274.84</b>
<b>Total 2000 Support Services</b>	<b>\$27,568,854.46</b>

LEA : 101631703      Canon-McMillan SD

Printed 5/7/2020 4:28:13 PM

General Fund (10)				
2100 Support Services – Students	<u>Elementary</u>	<u>Secondary</u>	<u>Federal</u>	<u>Total</u>
100 <u>Personnel Services – Salaries</u>				
100 Personnel Services – Salaries	514,946.88	584,365.23		1,152,417.58
<b>Total Personnel Services – Salaries</b>	<b>\$514,946.88</b>	<b>\$584,365.23</b>		<b>\$1,152,417.58</b>
200 <u>Personnel Services – Employee Benefits</u>				
210 Group Insurance – Contracted Provider	121,655.04	135,077.24		276,633.32
220 Social Security Contributions	38,821.27	44,020.67		86,824.25
230 PSERS Retirement Contributions	171,488.25	195,300.73		384,542.24
260 Workers' Compensation	4,287.98	4,872.99		9,608.96
291 Other Retirement Plans	150.00	15,317.50		15,467.50
<b>Total Personnel Services – Employee Benefits</b>	<b>\$336,402.54</b>	<b>\$394,589.13</b>		<b>\$773,076.27</b>
300 <u>Purchased Professional and Technical Services</u>				
329 Professional Educational Services – Other	319,706.47	5,706.46		325,412.93
330 Other Professional Services	220,003.04	209,497.14		429,500.18
<b>Total Purchased Professional and Technical Services</b>	<b>\$539,709.51</b>	<b>\$215,203.60</b>		<b>\$754,913.11</b>
500 <u>Other Purchased Services</u>				
530 Communications	5,862.64	4,391.87		10,254.51
550 Printing and Binding	2,184.98			2,184.98
580 Travel	2,851.96	2,342.77		5,194.73
<b>Total Other Purchased Services</b>	<b>\$10,899.58</b>	<b>\$6,734.64</b>		<b>\$17,634.22</b>
600 <u>Supplies</u>				
610 General Supplies	5,018.71	2,979.55		7,998.26
<b>Total Supplies</b>	<b>\$5,018.71</b>	<b>\$2,979.55</b>		<b>\$7,998.26</b>
700 <u>Property</u>				
752 Capital Equipment – Original and Additional	1,394.81	1,394.81		2,789.62
<b>Total Property</b>	<b>\$1,394.81</b>	<b>\$1,394.81</b>		<b>\$2,789.62</b>
800 <u>Other Objects</u>				
810 Dues and Fees	417.00	417.00		834.00
<b>Total Other Objects</b>	<b>\$417.00</b>	<b>\$417.00</b>		<b>\$834.00</b>
<b>Total 2100 Support Services – Students</b>	<b>\$1,408,789.03</b>	<b>\$1,205,683.96</b>		<b>\$2,709,663.06</b>

LEA : 101631703      Canon-McMillan SD

Printed 5/7/2020 4:28:13 PM

General Fund (10)				
2110 Supervision of Student Services	<u>Elementary</u>	<u>Secondary</u>	<u>Federal</u>	<u>Total</u>
100 <u>Personnel Services – Salaries</u>				
100 Personnel Services – Salaries	72,812.62	72,812.38		145,625.00
<b>Total Personnel Services – Salaries</b>	<b>\$72,812.62</b>	<b>\$72,812.38</b>		<b>\$145,625.00</b>
200 <u>Personnel Services – Employee Benefits</u>				
210 Group Insurance – Contracted Provider	20,302.92	20,302.56		40,605.48
220 Social Security Contributions	5,459.59	5,459.14		10,918.73
230 PSERS Retirement Contributions	24,050.33	24,050.10		48,100.43
260 Workers' Compensation	614.41	614.19		1,228.60
291 Other Retirement Plans	150.00	150.00		300.00
<b>Total Personnel Services – Employee Benefits</b>	<b>\$50,577.25</b>	<b>\$50,575.99</b>		<b>\$101,153.24</b>
500 <u>Other Purchased Services</u>				
530 Communications	1,033.82	949.00		1,982.82
580 Travel	2,810.10	2,342.77		5,152.87
<b>Total Other Purchased Services</b>	<b>\$3,843.92</b>	<b>\$3,291.77</b>		<b>\$7,135.69</b>
600 <u>Supplies</u>				
610 General Supplies	623.71	329.31		953.02
<b>Total Supplies</b>	<b>\$623.71</b>	<b>\$329.31</b>		<b>\$953.02</b>
700 <u>Property</u>				
752 Capital Equipment – Original and Additional	1,394.81	1,394.81		2,789.62
<b>Total Property</b>	<b>\$1,394.81</b>	<b>\$1,394.81</b>		<b>\$2,789.62</b>
800 <u>Other Objects</u>				
810 Dues and Fees	417.00	417.00		834.00
<b>Total Other Objects</b>	<b>\$417.00</b>	<b>\$417.00</b>		<b>\$834.00</b>
<b>Total 2110 Supervision of Student Services</b>	<b>\$129,669.31</b>	<b>\$128,821.26</b>		<b>\$258,490.57</b>



LEA : 101631703      Canon-McMillan SD

Printed 5/7/2020 4:28:13 PM

<b>General Fund (10)</b>				
<b>2111 Supervision of Student Services – Head of Component</b>	<b><u>Elementary</u></b>	<b><u>Secondary</u></b>	<b><u>Federal</u></b>	<b><u>Total</u></b>
<b>100 <u>Personnel Services – Salaries</u></b>				
100 Personnel Services – Salaries	72,812.62	72,812.38		145,625.00
<b>Total Personnel Services – Salaries</b>	<b>\$72,812.62</b>	<b>\$72,812.38</b>		<b>\$145,625.00</b>
<b>200 <u>Personnel Services – Employee Benefits</u></b>				
210 Group Insurance – Contracted Provider	20,302.92	20,302.56		40,605.48
220 Social Security Contributions	5,459.59	5,459.14		10,918.73
230 PSERS Retirement Contributions	24,050.33	24,050.10		48,100.43
260 Workers' Compensation	614.41	614.19		1,228.60
291 Other Retirement Plans	150.00	150.00		300.00
<b>Total Personnel Services – Employee Benefits</b>	<b>\$50,577.25</b>	<b>\$50,575.99</b>		<b>\$101,153.24</b>
<b>500 <u>Other Purchased Services</u></b>				
530 Communications	1,033.82	949.00		1,982.82
580 Travel	2,810.10	2,342.77		5,152.87
<b>Total Other Purchased Services</b>	<b>\$3,843.92</b>	<b>\$3,291.77</b>		<b>\$7,135.69</b>
<b>600 <u>Supplies</u></b>				
610 General Supplies	623.71	329.31		953.02
<b>Total Supplies</b>	<b>\$623.71</b>	<b>\$329.31</b>		<b>\$953.02</b>
<b>700 <u>Property</u></b>				
752 Capital Equipment – Original and Additional	1,394.81	1,394.81		2,789.62
<b>Total Property</b>	<b>\$1,394.81</b>	<b>\$1,394.81</b>		<b>\$2,789.62</b>
<b>800 <u>Other Objects</u></b>				
810 Dues and Fees	417.00	417.00		834.00
<b>Total Other Objects</b>	<b>\$417.00</b>	<b>\$417.00</b>		<b>\$834.00</b>
<b>Total 2111 Supervision of Student Services – Head of Component</b>	<b>\$129,669.31</b>	<b>\$128,821.26</b>		<b>\$258,490.57</b>

LEA : 101631703      Canon-McMillan SD

Printed 5/7/2020 4:28:13 PM

<b>General Fund (10)</b>				
<b>2120 Guidance Services</b>	<u>Elementary</u>	<u>Secondary</u>	<u>Federal</u>	<u>Total</u>
<b>100 <u>Personnel Services – Salaries</u></b>				
100 Personnel Services – Salaries	442,134.26	511,552.85		953,687.11
<b>Total Personnel Services – Salaries</b>	<b>\$442,134.26</b>	<b>\$511,552.85</b>		<b>\$953,687.11</b>
<b>200 <u>Personnel Services – Employee Benefits</u></b>				
210 Group Insurance – Contracted Provider	101,352.12	114,774.68		216,126.80
220 Social Security Contributions	33,361.68	38,561.53		71,923.21
230 PSERS Retirement Contributions	147,437.92	171,250.63		318,688.55
260 Workers' Compensation	3,673.57	4,258.80		7,932.37
291 Other Retirement Plans		15,167.50		15,167.50
<b>Total Personnel Services – Employee Benefits</b>	<b>\$285,825.29</b>	<b>\$344,013.14</b>		<b>\$629,838.43</b>
<b>300 <u>Purchased Professional and Technical Services</u></b>				
330 Other Professional Services		6,854.40		6,854.40
<b>Total Purchased Professional and Technical Services</b>		<b>\$6,854.40</b>		<b>\$6,854.40</b>
<b>500 <u>Other Purchased Services</u></b>				
530 Communications	4,828.82	3,442.87		8,271.69
550 Printing and Binding	2,184.98			2,184.98
580 Travel	41.86			41.86
<b>Total Other Purchased Services</b>	<b>\$7,055.66</b>	<b>\$3,442.87</b>		<b>\$10,498.53</b>
<b>600 <u>Supplies</u></b>				
610 General Supplies	3,630.50	1,885.74		5,516.24
<b>Total Supplies</b>	<b>\$3,630.50</b>	<b>\$1,885.74</b>		<b>\$5,516.24</b>
<b>Total 2120 Guidance Services</b>	<b>\$738,645.71</b>	<b>\$867,749.00</b>		<b>\$1,606,394.71</b>

LEA : 101631703     Canon-McMillan SD

Printed 5/7/2020 4:28:13 PM

General Fund (10)

2140 Psychological Services	<u>Elementary</u>	<u>Secondary</u>	<u>Federal</u>	<u>Total</u>
300 <u>Purchased Professional and Technical Services</u>				
330 Other Professional Services	220,003.04	202,642.74		422,645.78
Total Purchased Professional and Technical Services	\$220,003.04	\$202,642.74		\$422,645.78
600 <u>Supplies</u>				
610 General Supplies	764.50	764.50		1,529.00
Total Supplies	\$764.50	\$764.50		\$1,529.00
Total 2140 Psychological Services	\$220,767.54	\$203,407.24		\$424,174.78

LEA : 101631703     Canon-McMillan SD

Printed 5/7/2020 4:28:13 PM

General Fund (10)

2170 Student Accounting Services	<u>Elementary</u>	<u>Secondary</u>	<u>Federal</u>	<u>Total</u>
100 <u>Personnel Services – Salaries</u>				
100 Personnel Services – Salaries				53,105.47
<b>Total Personnel Services – Salaries</b>				<b>\$53,105.47</b>
200 <u>Personnel Services – Employee Benefits</u>				
210 Group Insurance – Contracted Provider				19,901.04
220 Social Security Contributions				3,982.31
230 PSERS Retirement Contributions				17,753.26
260 Workers' Compensation				447.99
<b>Total Personnel Services – Employee Benefits</b>				<b>\$42,084.60</b>
<b>Total 2170 Student Accounting Services</b>				<b>\$95,190.07</b>

LEA : 101631703     Canon-McMillan SD

Printed 5/7/2020 4:28:13 PM

General Fund (10)

2190 Other Student Services	<u>Elementary</u>	<u>Secondary</u>	<u>Federal</u>	<u>Total</u>
300 <u>Purchased Professional and Technical Services</u>				
329 Professional Educational Services – Other	319,706.47	5,706.46		325,412.93
Total Purchased Professional and Technical Services	\$319,706.47	\$5,706.46		\$325,412.93
Total 2190 Other Student Services	\$319,706.47	\$5,706.46		\$325,412.93

LEA : 101631703      Canon-McMillan SD

Printed 5/7/2020 4:28:13 PM

<b>General Fund (10)</b>				
<b>2200 Support Services – Instructional Staff</b>	<b><u>Elementary</u></b>	<b><u>Secondary</u></b>	<b><u>Federal</u></b>	<b><u>Total</u></b>
<b>100 <u>Personnel Services – Salaries</u></b>				
100 Personnel Services – Salaries	411,406.27	254,293.37		665,699.64
<b>Total Personnel Services – Salaries</b>	<b>\$411,406.27</b>	<b>\$254,293.37</b>		<b>\$665,699.64</b>
<b>200 <u>Personnel Services – Employee Benefits</u></b>				
210 Group Insurance – Contracted Provider	109,255.68	60,374.64		169,630.32
220 Social Security Contributions	30,905.55	19,198.78		50,104.33
230 PSERS Retirement Contributions	137,533.23	85,010.28		222,543.51
240 Tuition Reimbursement	30,983.50	11,803.75		42,787.25
260 Workers' Compensation	3,430.67	2,125.90		5,556.57
291 Other Retirement Plans	436.86	436.86		873.72
<b>Total Personnel Services – Employee Benefits</b>	<b>\$312,545.49</b>	<b>\$178,950.21</b>		<b>\$491,495.70</b>
<b>300 <u>Purchased Professional and Technical Services</u></b>				
329 Professional Educational Services – Other	45,343.34			45,343.34
330 Other Professional Services	1,200.00	1,200.00		2,400.00
360 Employee Training and Development Services	6,102.98	3,814.23	16,510.00	26,427.21
<b>Total Purchased Professional and Technical Services</b>	<b>\$52,646.32</b>	<b>\$5,014.23</b>	<b>\$16,510.00</b>	<b>\$74,170.55</b>
<b>400 <u>Purchased Property Services</u></b>				
430 Repairs and Maintenance Services	432.25	432.25		864.50
<b>Total Purchased Property Services</b>	<b>\$432.25</b>	<b>\$432.25</b>		<b>\$864.50</b>
<b>500 <u>Other Purchased Services</u></b>				
580 Travel	5,394.56	5,394.56	3,903.36	14,692.48
<b>Total Other Purchased Services</b>	<b>\$5,394.56</b>	<b>\$5,394.56</b>	<b>\$3,903.36</b>	<b>\$14,692.48</b>
<b>600 <u>Supplies</u></b>				
610 General Supplies	38,561.18	27,153.46		65,714.64
640 Books and Periodicals	16,902.70	18,545.96		35,448.66
650 Supplies & Fees – Technology Related	12,123.09	18,929.29		31,052.38
<b>Total Supplies</b>	<b>\$67,586.97</b>	<b>\$64,628.71</b>		<b>\$132,215.68</b>
<b>700 <u>Property</u></b>				
752 Capital Equipment – Original and Additional	8,558.00			8,558.00
<b>Total Property</b>	<b>\$8,558.00</b>			<b>\$8,558.00</b>
<b>800 <u>Other Objects</u></b>				
810 Dues and Fees	456.50	456.50		913.00
890 Miscellaneous Expenditures	799.25	799.25		1,598.50
<b>Total Other Objects</b>	<b>\$1,255.75</b>	<b>\$1,255.75</b>		<b>\$2,511.50</b>
<b>Total 2200 Support Services – Instructional Staff</b>	<b>\$859,825.61</b>	<b>\$509,969.08</b>	<b>\$20,413.36</b>	<b>\$1,390,208.05</b>

LEA : 101631703     Canon-McMillan SD

Printed 5/7/2020 4:28:13 PM

General Fund (10)

2220 Technology Support Services	<u>Elementary</u>	<u>Secondary</u>	<u>Federal</u>	<u>Total</u>
400 <u>Purchased Property Services</u>				
430 Repairs and Maintenance Services	432.25	432.25		864.50
Total Purchased Property Services	\$432.25	\$432.25		\$864.50
Total 2220 Technology Support Services	\$432.25	\$432.25		\$864.50

LEA : 101631703     Canon-McMillan SD

Printed 5/7/2020 4:28:13 PM

General Fund (10)				
2240 Computer-Assisted Instruction Support Services	<u>Elementary</u>	<u>Secondary</u>	<u>Federal</u>	<u>Total</u>
100 <u>Personnel Services – Salaries</u>				
100 Personnel Services – Salaries	60,750.00			60,750.00
<b>Total Personnel Services – Salaries</b>	<b>\$60,750.00</b>			<b>\$60,750.00</b>
200 <u>Personnel Services – Employee Benefits</u>				
210 Group Insurance – Contracted Provider	6,901.08			6,901.08
220 Social Security Contributions	4,595.04			4,595.04
230 PSERS Retirement Contributions	20,308.80			20,308.80
260 Workers' Compensation	504.37			504.37
<b>Total Personnel Services – Employee Benefits</b>	<b>\$32,309.29</b>			<b>\$32,309.29</b>
600 <u>Supplies</u>				
610 General Supplies	7,038.97			7,038.97
<b>Total Supplies</b>	<b>\$7,038.97</b>			<b>\$7,038.97</b>
<b>Total 2240 Computer-Assisted Instruction Support Services</b>	<b>\$100,098.26</b>			<b>\$100,098.26</b>



LEA : 101631703      Canon-McMillan SD

Printed 5/7/2020 4:28:13 PM

General Fund (10)				
2250 School Library Services	<u>Elementary</u>	<u>Secondary</u>	<u>Federal</u>	<u>Total</u>
100 <u>Personnel Services – Salaries</u>				
100 Personnel Services – Salaries	236,650.00	142,823.95		379,473.95
<b>Total Personnel Services – Salaries</b>	<b>\$236,650.00</b>	<b>\$142,823.95</b>		<b>\$379,473.95</b>
200 <u>Personnel Services – Employee Benefits</u>				
210 Group Insurance – Contracted Provider	82,273.68	40,294.08		122,567.76
220 Social Security Contributions	17,683.15	10,761.02		28,444.17
230 PSERS Retirement Contributions	79,112.03	47,746.10		126,858.13
260 Workers' Compensation	1,964.62	1,185.64		3,150.26
<b>Total Personnel Services – Employee Benefits</b>	<b>\$181,033.48</b>	<b>\$99,986.84</b>		<b>\$281,020.32</b>
600 <u>Supplies</u>				
610 General Supplies	2,148.22	2,779.48		4,927.70
640 Books and Periodicals	16,902.70	18,545.96		35,448.66
650 Supplies & Fees – Technology Related	12,123.09	18,929.29		31,052.38
<b>Total Supplies</b>	<b>\$31,174.01</b>	<b>\$40,254.73</b>		<b>\$71,428.74</b>
700 <u>Property</u>				
752 Capital Equipment – Original and Additional	8,558.00			8,558.00
<b>Total Property</b>	<b>\$8,558.00</b>			<b>\$8,558.00</b>
<b>Total 2250 School Library Services</b>	<b>\$457,415.49</b>	<b>\$283,065.52</b>		<b>\$740,481.01</b>

LEA : 101631703      Canon-McMillan SD

Printed 5/7/2020 4:28:13 PM

General Fund (10)				
2260 Instruction and Curriculum Development Services	<u>Elementary</u>	<u>Secondary</u>	<u>Federal</u>	<u>Total</u>
100 <u>Personnel Services – Salaries</u>				
100 Personnel Services – Salaries	107,502.12	108,194.42		215,696.54
<b>Total Personnel Services – Salaries</b>	<b>\$107,502.12</b>	<b>\$108,194.42</b>		<b>\$215,696.54</b>
200 <u>Personnel Services – Employee Benefits</u>				
210 Group Insurance – Contracted Provider	20,080.92	20,080.56		40,161.48
220 Social Security Contributions	8,138.00	8,190.56		16,328.56
230 PSERS Retirement Contributions	35,938.04	36,169.33		72,107.37
260 Workers' Compensation	906.78	912.62		1,819.40
291 Other Retirement Plans	436.86	436.86		873.72
<b>Total Personnel Services – Employee Benefits</b>	<b>\$65,500.60</b>	<b>\$65,789.93</b>		<b>\$131,290.53</b>
300 <u>Purchased Professional and Technical Services</u>				
329 Professional Educational Services – Other	20,000.00			20,000.00
330 Other Professional Services	1,200.00	1,200.00		2,400.00
<b>Total Purchased Professional and Technical Services</b>	<b>\$21,200.00</b>	<b>\$1,200.00</b>		<b>\$22,400.00</b>
500 <u>Other Purchased Services</u>				
580 Travel	3,486.30	3,486.30		6,972.60
<b>Total Other Purchased Services</b>	<b>\$3,486.30</b>	<b>\$3,486.30</b>		<b>\$6,972.60</b>
600 <u>Supplies</u>				
610 General Supplies	29,014.52	24,014.52		53,029.04
<b>Total Supplies</b>	<b>\$29,014.52</b>	<b>\$24,014.52</b>		<b>\$53,029.04</b>
800 <u>Other Objects</u>				
810 Dues and Fees	456.50	456.50		913.00
<b>Total Other Objects</b>	<b>\$456.50</b>	<b>\$456.50</b>		<b>\$913.00</b>
<b>Total 2260 Instruction and Curriculum Development Services</b>	<b>\$227,160.04</b>	<b>\$203,141.67</b>		<b>\$430,301.71</b>

LEA : 101631703      Canon-McMillan SD

Printed 5/7/2020 4:28:13 PM

General Fund (10)				
2270 Instructional Staff Professional Development Services	<u>Elementary</u>	<u>Secondary</u>	<u>Federal</u>	<u>Total</u>
100 <u>Personnel Services – Salaries</u>				
100 Personnel Services – Salaries	6,504.15	3,275.00		9,779.15
<b>Total Personnel Services – Salaries</b>	<b>\$6,504.15</b>	<b>\$3,275.00</b>		<b>\$9,779.15</b>
200 <u>Personnel Services – Employee Benefits</u>				
220 Social Security Contributions	489.36	247.20		736.56
230 PSERS Retirement Contributions	2,174.36	1,094.85		3,269.21
240 Tuition Reimbursement	30,983.50	11,803.75		42,787.25
260 Workers' Compensation	54.90	27.64		82.54
<b>Total Personnel Services – Employee Benefits</b>	<b>\$33,702.12</b>	<b>\$13,173.44</b>		<b>\$46,875.56</b>
300 <u>Purchased Professional and Technical Services</u>				
329 Professional Educational Services – Other	25,343.34			25,343.34
360 Employee Training and Development Services	6,102.98	3,814.23	16,510.00	26,427.21
<b>Total Purchased Professional and Technical Services</b>	<b>\$31,446.32</b>	<b>\$3,814.23</b>	<b>\$16,510.00</b>	<b>\$51,770.55</b>
500 <u>Other Purchased Services</u>				
580 Travel	1,908.26	1,908.26	3,903.36	7,719.88
<b>Total Other Purchased Services</b>	<b>\$1,908.26</b>	<b>\$1,908.26</b>	<b>\$3,903.36</b>	<b>\$7,719.88</b>
600 <u>Supplies</u>				
610 General Supplies	359.47	359.46		718.93
<b>Total Supplies</b>	<b>\$359.47</b>	<b>\$359.46</b>		<b>\$718.93</b>
800 <u>Other Objects</u>				
890 Miscellaneous Expenditures	799.25	799.25		1,598.50
<b>Total Other Objects</b>	<b>\$799.25</b>	<b>\$799.25</b>		<b>\$1,598.50</b>
<b>Total 2270 Instructional Staff Professional Development Services</b>	<b>\$74,719.57</b>	<b>\$23,329.64</b>	<b>\$20,413.36</b>	<b>\$118,462.57</b>

LEA : 101631703      Canon-McMillan SD

Printed 5/7/2020 4:28:13 PM

<b>General Fund (10)</b>				
<b>2300 Support Services – Administration</b>	<b><u>Elementary</u></b>	<b><u>Secondary</u></b>	<b><u>Federal</u></b>	<b><u>Total</u></b>
<b>100 <u>Personnel Services – Salaries</u></b>				
100 Personnel Services – Salaries	1,116,741.09	718,574.58		2,325,449.76
<b>Total Personnel Services – Salaries</b>	<b>\$1,116,741.09</b>	<b>\$718,574.58</b>		<b>\$2,325,449.76</b>
<b>200 <u>Personnel Services – Employee Benefits</u></b>				
210 Group Insurance – Contracted Provider	299,063.40	169,029.83		559,449.48
220 Social Security Contributions	84,135.14	54,129.14		171,523.59
230 PSERS Retirement Contributions	369,079.50	237,782.58		759,986.59
250 Unemployment Compensation		11.02		11.02
260 Workers' Compensation	9,420.69	6,061.82		19,371.94
280 Other Post-Employment Benefits (OPEB)				5,593.20
291 Other Retirement Plans	2,455.61	1,586.49		5,621.25
<b>Total Personnel Services – Employee Benefits</b>	<b>\$764,154.34</b>	<b>\$468,600.88</b>		<b>\$1,521,557.07</b>
<b>300 <u>Purchased Professional and Technical Services</u></b>				
330 Other Professional Services				230,255.59
<b>Total Purchased Professional and Technical Services</b>				<b>\$230,255.59</b>
<b>400 <u>Purchased Property Services</u></b>				
430 Repairs and Maintenance Services	436.50	365.00		801.50
<b>Total Purchased Property Services</b>	<b>\$436.50</b>	<b>\$365.00</b>		<b>\$801.50</b>
<b>500 <u>Other Purchased Services</u></b>				
520 Insurance – General				23,707.50
530 Communications	523.05	5,644.77		16,685.00
549 Other Advertising/Public Relations				1,735.79
550 Printing and Binding				950.00
580 Travel	5,719.56	4,702.28		24,429.84
<b>Total Other Purchased Services</b>	<b>\$6,242.61</b>	<b>\$10,347.05</b>		<b>\$67,508.13</b>
<b>600 <u>Supplies</u></b>				
610 General Supplies	16,535.56	8,159.44		32,226.22
630 Food				4,167.32
640 Books and Periodicals				1,738.00
<b>Total Supplies</b>	<b>\$16,535.56</b>	<b>\$8,159.44</b>		<b>\$38,131.54</b>
<b>800 <u>Other Objects</u></b>				
810 Dues and Fees	5,457.00	8,673.98		53,278.88
890 Miscellaneous Expenditures		26,849.35		27,608.03
<b>Total Other Objects</b>	<b>\$5,457.00</b>	<b>\$35,523.33</b>		<b>\$80,886.91</b>
<b>Total 2300 Support Services – Administration</b>	<b>\$1,909,567.10</b>	<b>\$1,241,570.28</b>		<b>\$4,264,590.50</b>

LEA : 101631703      Canon-McMillan SD

Printed 5/7/2020 4:28:13 PM

General Fund (10)				
2310 Board Services	<u>Elementary</u>	<u>Secondary</u>	<u>Federal</u>	<u>Total</u>
100 <u>Personnel Services – Salaries</u>				
100 Personnel Services – Salaries				7,550.00
Total Personnel Services – Salaries				\$7,550.00
200 <u>Personnel Services – Employee Benefits</u>				
220 Social Security Contributions				567.84
230 PSERS Retirement Contributions				2,524.02
260 Workers’ Compensation				63.83
291 Other Retirement Plans				8.79
Total Personnel Services – Employee Benefits				\$3,164.48
500 <u>Other Purchased Services</u>				
520 Insurance – General				23,707.50
549 Other Advertising/Public Relations				1,735.79
580 Travel				7,965.68
Total Other Purchased Services				\$33,408.97
600 <u>Supplies</u>				
610 General Supplies				757.03
630 Food				127.77
Total Supplies				\$884.80
800 <u>Other Objects</u>				
810 Dues and Fees				23,714.00
890 Miscellaneous Expenditures				758.68
Total Other Objects				\$24,472.68
Total 2310 Board Services				\$69,480.93

LEA : 101631703      Canon-McMillan SD

Printed 5/7/2020 4:28:13 PM

General Fund (10)				
2330 Tax Assessment and Collection Services	<u>Elementary</u>	<u>Secondary</u>	<u>Federal</u>	<u>Total</u>
100 <u>Personnel Services – Salaries</u>				
100 Personnel Services – Salaries				29,102.35
Total Personnel Services – Salaries				\$29,102.35
200 <u>Personnel Services – Employee Benefits</u>				
220 Social Security Contributions				2,226.26
260 Workers’ Compensation				(0.05)
Total Personnel Services – Employee Benefits				\$2,226.21
300 <u>Purchased Professional and Technical Services</u>				
330 Other Professional Services				114,827.71
Total Purchased Professional and Technical Services				\$114,827.71
500 <u>Other Purchased Services</u>				
530 Communications				10,517.18
550 Printing and Binding				950.00
Total Other Purchased Services				\$11,467.18
600 <u>Supplies</u>				
610 General Supplies				3,253.91
Total Supplies				\$3,253.91
Total 2330 Tax Assessment and Collection Services				\$160,877.36

LEA : 101631703     Canon-McMillan SD

Printed 5/7/2020 4:28:13 PM

General Fund (10)

2350 Legal and Accounting Services	<u>Elementary</u>	<u>Secondary</u>	<u>Federal</u>	<u>Total</u>
300 <u>Purchased Professional and Technical Services</u>				
330 Other Professional Services				115,427.88
Total Purchased Professional and Technical Services				\$115,427.88
Total 2350 Legal and Accounting Services				\$115,427.88

LEA : 101631703      Canon-McMillan SD

Printed 5/7/2020 4:28:13 PM

General Fund (10)				
2360 Office of the Superintendent / Executive Director Services	<u>Elementary</u>	<u>Secondary</u>	<u>Federal</u>	<u>Total</u>
100 <u>Personnel Services – Salaries</u>				
100 Personnel Services – Salaries				453,481.74
Total Personnel Services – Salaries				\$453,481.74
200 <u>Personnel Services – Employee Benefits</u>				
210 Group Insurance – Contracted Provider				91,356.25
220 Social Security Contributions				30,465.21
230 PSERS Retirement Contributions				150,600.49
260 Workers' Compensation				3,825.65
280 Other Post-Employment Benefits (OPEB)				5,593.20
291 Other Retirement Plans				1,570.36
Total Personnel Services – Employee Benefits				\$283,411.16
500 <u>Other Purchased Services</u>				
530 Communications	523.05	523.05		1,046.10
580 Travel				6,042.32
Total Other Purchased Services	\$523.05	\$523.05		\$7,088.42
600 <u>Supplies</u>				
610 General Supplies				3,520.28
630 Food				4,039.55
640 Books and Periodicals				1,738.00
Total Supplies				\$9,297.83
800 <u>Other Objects</u>				
810 Dues and Fees				6,144.00
Total Other Objects				\$6,144.00
Total 2360 Office of the Superintendent / Executive Director Services	\$523.05	\$523.05		\$759,423.15



LEA : 101631703      Canon-McMillan SD

Printed 5/7/2020 4:28:13 PM

General Fund (10)

2380 Office of the Principal Services	Elementary	Secondary	Federal	Total
<b>100 <u>Personnel Services – Salaries</u></b>				
100 Personnel Services – Salaries	1,116,741.09	718,574.58		1,835,315.67
<b>Total Personnel Services – Salaries</b>	<b>\$1,116,741.09</b>	<b>\$718,574.58</b>		<b>\$1,835,315.67</b>
<b>200 <u>Personnel Services – Employee Benefits</u></b>				
210 Group Insurance – Contracted Provider	299,063.40	169,029.83		468,093.23
220 Social Security Contributions	84,135.14	54,129.14		138,264.28
230 PSERS Retirement Contributions	369,079.50	237,782.58		606,862.08
250 Unemployment Compensation		11.02		11.02
260 Workers' Compensation	9,420.69	6,061.82		15,482.51
291 Other Retirement Plans	2,455.61	1,586.49		4,042.10
<b>Total Personnel Services – Employee Benefits</b>	<b>\$764,154.34</b>	<b>\$468,600.88</b>		<b>\$1,232,755.22</b>
<b>400 <u>Purchased Property Services</u></b>				
430 Repairs and Maintenance Services	436.50	365.00		801.50
<b>Total Purchased Property Services</b>	<b>\$436.50</b>	<b>\$365.00</b>		<b>\$801.50</b>
<b>500 <u>Other Purchased Services</u></b>				
530 Communications		5,121.72		5,121.72
580 Travel	5,719.56	4,702.28		10,421.84
<b>Total Other Purchased Services</b>	<b>\$5,719.56</b>	<b>\$9,824.00</b>		<b>\$15,543.56</b>
<b>600 <u>Supplies</u></b>				
610 General Supplies	16,535.56	8,159.44		24,695.00
<b>Total Supplies</b>	<b>\$16,535.56</b>	<b>\$8,159.44</b>		<b>\$24,695.00</b>
<b>800 <u>Other Objects</u></b>				
810 Dues and Fees	5,457.00	8,673.98		14,130.98
890 Miscellaneous Expenditures		26,849.35		26,849.35
<b>Total Other Objects</b>	<b>\$5,457.00</b>	<b>\$35,523.33</b>		<b>\$40,980.33</b>
<b>Total 2380 Office of the Principal Services</b>	<b>\$1,909,044.05</b>	<b>\$1,241,047.23</b>		<b>\$3,150,091.28</b>

LEA : 101631703     Canon-McMillan SD

Printed 5/7/2020 4:28:13 PM

General Fund (10)

2390 Other Administration Services	<u>Elementary</u>	<u>Secondary</u>	<u>Federal</u>	<u>Total</u>
800 <u>Other Objects</u>				
810 Dues and Fees				9,289.90
Total Other Objects				\$9,289.90
Total 2390 Other Administration Services				\$9,289.90

LEA : 101631703     Canon-McMillan SD

Printed 5/7/2020 4:28:13 PM

<b>General Fund (10)</b>				
<b>2400 Support Services – Pupil Health</b>	<b><u>Elementary</u></b>	<b><u>Secondary</u></b>	<b><u>Federal</u></b>	<b><u>Total</u></b>
<b>100 <u>Personnel Services – Salaries</u></b>				
100 Personnel Services – Salaries				301,500.00
<b>Total Personnel Services – Salaries</b>				<b>\$301,500.00</b>
<b>200 <u>Personnel Services – Employee Benefits</u></b>				
210 Group Insurance – Contracted Provider				81,430.92
220 Social Security Contributions				22,684.72
230 PSERS Retirement Contributions				100,791.74
260 Workers' Compensation				2,503.05
<b>Total Personnel Services – Employee Benefits</b>				<b>\$207,410.43</b>
<b>300 <u>Purchased Professional and Technical Services</u></b>				
322 Professional Educational Services – Ius				403,575.37
330 Other Professional Services				663,392.87
<b>Total Purchased Professional and Technical Services</b>				<b>\$1,066,968.24</b>
<b>400 <u>Purchased Property Services</u></b>				
430 Repairs and Maintenance Services				104.10
<b>Total Purchased Property Services</b>				<b>\$104.10</b>
<b>500 <u>Other Purchased Services</u></b>				
530 Communications				287.85
580 Travel				67.72
<b>Total Other Purchased Services</b>				<b>\$355.57</b>
<b>600 <u>Supplies</u></b>				
610 General Supplies				9,760.82
<b>Total Supplies</b>				<b>\$9,760.82</b>
<b>Total 2400 Support Services – Pupil Health</b>				<b>\$1,586,099.16</b>

LEA : 101631703     Canon-McMillan SD

Printed 5/7/2020 4:28:13 PM

General Fund (10)

2420 Medical Services

Elementary                      Secondary                      Federal                      Total

300 Purchased Professional and Technical Services

322 Professional Educational Services – lus 403,575.37

330 Other Professional Services 397,561.02

<b>Total Purchased Professional and Technical Services</b>				<b>\$801,136.39</b>
<b>Total 2420 Medical Services</b>				<b>\$801,136.39</b>

LEA : 101631703     Canon-McMillan SD

Printed 5/7/2020 4:28:13 PM

General Fund (10)

2430 Dental Services

<u>Elementary</u>	<u>Secondary</u>	<u>Federal</u>	<u>Total</u>
-------------------	------------------	----------------	--------------

300 Purchased Professional and Technical Services

330 Other Professional Services			682.50
---------------------------------	--	--	--------

<b>Total Purchased Professional and Technical Services</b>			<b>\$682.50</b>
--	--	--	-----------------

<b>Total 2430 Dental Services</b>			<b>\$682.50</b>
-----------------------------------	--	--	-----------------

LEA : 101631703 Canon-McMillan SD

Printed 5/7/2020 4:28:13 PM

General Fund (10)

2440 Nursing Services

	<u>Elementary</u>	<u>Secondary</u>	<u>Federal</u>	<u>Total</u>
<b>100 <u>Personnel Services – Salaries</u></b>				
100 Personnel Services – Salaries				301,500.00
<b>Total Personnel Services – Salaries</b>				<b>\$301,500.00</b>
<b>200 <u>Personnel Services – Employee Benefits</u></b>				
210 Group Insurance – Contracted Provider				81,430.92
220 Social Security Contributions				22,684.72
230 PSERS Retirement Contributions				100,791.74
260 Workers' Compensation				2,503.05
<b>Total Personnel Services – Employee Benefits</b>				<b>\$207,410.43</b>
<b>300 <u>Purchased Professional and Technical Services</u></b>				
330 Other Professional Services				265,149.35
<b>Total Purchased Professional and Technical Services</b>				<b>\$265,149.35</b>
<b>400 <u>Purchased Property Services</u></b>				
430 Repairs and Maintenance Services				104.10
<b>Total Purchased Property Services</b>				<b>\$104.10</b>
<b>500 <u>Other Purchased Services</u></b>				
530 Communications				287.85
580 Travel				67.72
<b>Total Other Purchased Services</b>				<b>\$355.57</b>
<b>600 <u>Supplies</u></b>				
610 General Supplies				9,760.82
<b>Total Supplies</b>				<b>\$9,760.82</b>
<b>Total 2440 Nursing Services</b>				<b>\$784,280.27</b>

LEA : 101631703      Canon-McMillan SD

Printed 5/7/2020 4:28:13 PM

General Fund (10)				
2500 Support Services – Business	<u>Elementary</u>	<u>Secondary</u>	<u>Federal</u>	<u>Total</u>
100 <u>Personnel Services – Salaries</u>				
100 Personnel Services – Salaries				396,495.03
Total Personnel Services – Salaries				\$396,495.03
200 <u>Personnel Services – Employee Benefits</u>				
210 Group Insurance – Contracted Provider				101,969.28
220 Social Security Contributions				29,855.10
230 PSERS Retirement Contributions				131,303.77
260 Workers' Compensation				3,344.92
291 Other Retirement Plans				1,791.21
Total Personnel Services – Employee Benefits				\$268,264.28
300 <u>Purchased Professional and Technical Services</u>				
330 Other Professional Services				43,834.66
340 Technical Services				21,109.85
Total Purchased Professional and Technical Services				\$64,944.51
400 <u>Purchased Property Services</u>				
430 Repairs and Maintenance Services				2,654.00
440 Rentals				2,519.52
Total Purchased Property Services				\$5,173.52
500 <u>Other Purchased Services</u>				
530 Communications				12,053.16
549 Other Advertising/Public Relations				19,851.14
580 Travel				5,632.67
Total Other Purchased Services				\$37,536.97
600 <u>Supplies</u>				
610 General Supplies				36,371.56
Total Supplies				\$36,371.56
800 <u>Other Objects</u>				
810 Dues and Fees				1,263.43
Total Other Objects				\$1,263.43
Total 2500 Support Services – Business				\$810,049.30

LEA : 101631703      Canon-McMillan SD

Printed 5/7/2020 4:28:13 PM

General Fund (10)				
2510 Fiscal Services	<u>Elementary</u>	<u>Secondary</u>	<u>Federal</u>	<u>Total</u>
100 <u>Personnel Services – Salaries</u>				
100 Personnel Services – Salaries				396,495.03
Total Personnel Services – Salaries				\$396,495.03
200 <u>Personnel Services – Employee Benefits</u>				
210 Group Insurance – Contracted Provider				101,969.28
220 Social Security Contributions				29,855.10
230 PSERS Retirement Contributions				131,303.77
260 Workers' Compensation				3,344.92
291 Other Retirement Plans				1,791.21
Total Personnel Services – Employee Benefits				\$268,264.28
300 <u>Purchased Professional and Technical Services</u>				
330 Other Professional Services				43,834.66
340 Technical Services				21,109.85
Total Purchased Professional and Technical Services				\$64,944.51
400 <u>Purchased Property Services</u>				
430 Repairs and Maintenance Services				2,654.00
440 Rentals				2,519.52
Total Purchased Property Services				\$5,173.52
500 <u>Other Purchased Services</u>				
530 Communications				12,053.16
549 Other Advertising/Public Relations				19,851.14
580 Travel				5,632.67
Total Other Purchased Services				\$37,536.97
600 <u>Supplies</u>				
610 General Supplies				8,491.45
Total Supplies				\$8,491.45
800 <u>Other Objects</u>				
810 Dues and Fees				1,263.43
Total Other Objects				\$1,263.43
Total 2510 Fiscal Services				\$782,169.19



LEA : 101631703      Canon-McMillan SD

Printed 5/7/2020 4:28:13 PM

General Fund (10)				
2511 Supervision of Fiscal Services - Head of Component	<u>Elementary</u>	<u>Secondary</u>	<u>Federal</u>	<u>Total</u>
100 <u>Personnel Services – Salaries</u>				
100 Personnel Services – Salaries				181,325.62
Total Personnel Services – Salaries				\$181,325.62
200 <u>Personnel Services – Employee Benefits</u>				
210 Group Insurance – Contracted Provider				38,598.12
220 Social Security Contributions				13,672.04
230 PSERS Retirement Contributions				59,817.29
260 Workers' Compensation				1,529.74
291 Other Retirement Plans				1,491.21
Total Personnel Services – Employee Benefits				\$115,108.40
300 <u>Purchased Professional and Technical Services</u>				
330 Other Professional Services				43,834.66
340 Technical Services				21,109.85
Total Purchased Professional and Technical Services				\$64,944.51
400 <u>Purchased Property Services</u>				
430 Repairs and Maintenance Services				2,654.00
440 Rentals				2,519.52
Total Purchased Property Services				\$5,173.52
500 <u>Other Purchased Services</u>				
530 Communications				12,053.16
549 Other Advertising/Public Relations				19,851.14
580 Travel				4,810.53
Total Other Purchased Services				\$36,714.83
600 <u>Supplies</u>				
610 General Supplies				8,491.45
Total Supplies				\$8,491.45
800 <u>Other Objects</u>				
810 Dues and Fees				1,263.43
Total Other Objects				\$1,263.43
Total 2511 Supervision of Fiscal Services - Head of Component				\$413,021.76

LEA : 101631703     Canon-McMillan SD

Printed 5/7/2020 4:28:13 PM

General Fund (10)

2513 Receiving and Disbursing Funds Services

Elementary                      Secondary                      Federal                      Total

100 <u>Personnel Services – Salaries</u>				
100 Personnel Services – Salaries				42,436.00
<b>Total Personnel Services – Salaries</b>				<b>\$42,436.00</b>
200 <u>Personnel Services – Employee Benefits</u>				
210 Group Insurance – Contracted Provider				16,870.68
220 Social Security Contributions				3,168.36
230 PSERS Retirement Contributions				14,186.37
260 Workers' Compensation				358.01
<b>Total Personnel Services – Employee Benefits</b>				<b>\$34,583.42</b>
<b>Total 2513 Receiving and Disbursing Funds Services</b>				<b>\$77,019.42</b>

LEA : 101631703     Canon-McMillan SD

Printed 5/7/2020 4:28:13 PM

General Fund (10)

2514 Payroll Services

Elementary                      Secondary                      Federal                      Total

100 <u>Personnel Services – Salaries</u>				
100 Personnel Services – Salaries				54,485.56
<b>Total Personnel Services – Salaries</b>				<b>\$54,485.56</b>
200 <u>Personnel Services – Employee Benefits</u>				
210 Group Insurance – Contracted Provider				19,095.12
220 Social Security Contributions				4,089.34
230 PSERS Retirement Contributions				18,214.49
260 Workers' Compensation				459.74
<b>Total Personnel Services – Employee Benefits</b>				<b>\$41,858.69</b>
<b>Total 2514 Payroll Services</b>				<b>\$96,344.25</b>

LEA : 101631703     Canon-McMillan SD

Printed 5/7/2020 4:28:13 PM

General Fund (10)

2515 Financial Accounting Services

	<u>Elementary</u>	<u>Secondary</u>	<u>Federal</u>	<u>Total</u>
<b>100 <u>Personnel Services – Salaries</u></b>				
100 Personnel Services – Salaries				118,247.85
<b>Total Personnel Services – Salaries</b>				<b>\$118,247.85</b>
<b>200 <u>Personnel Services – Employee Benefits</u></b>				
210 Group Insurance – Contracted Provider				27,405.36
220 Social Security Contributions				8,925.36
230 PSERS Retirement Contributions				39,085.62
260 Workers' Compensation				997.43
291 Other Retirement Plans				300.00
<b>Total Personnel Services – Employee Benefits</b>				<b>\$76,713.77</b>
<b>500 <u>Other Purchased Services</u></b>				
580 Travel				822.14
<b>Total Other Purchased Services</b>				<b>\$822.14</b>
<b>Total 2515 Financial Accounting Services</b>				<b>\$195,783.76</b>

LEA : 101631703     Canon-McMillan SD

Printed 5/7/2020 4:28:13 PM

General Fund (10)

2540 Printing, Publishing and Duplicating Services

Elementary

Secondary

Federal

Total

600 Supplies

610 General Supplies

27,880.11

Total Supplies				\$27,880.11
Total 2540 Printing, Publishing and Duplicating Services				\$27,880.11

LEA : 101631703      Canon-McMillan SD

Printed 5/7/2020 4:28:13 PM

<b>General Fund (10)</b>				
<b>2600 Operation and Maintenance of Plant Services</b>	<b><u>Elementary</u></b>	<b><u>Secondary</u></b>	<b><u>Federal</u></b>	<b><u>Total</u></b>
<b>100 <u>Personnel Services – Salaries</u></b>				
100 Personnel Services – Salaries				2,614,621.00
<b>Total Personnel Services – Salaries</b>				<b>\$2,614,621.00</b>
<b>200 <u>Personnel Services – Employee Benefits</u></b>				
210 Group Insurance – Contracted Provider				573,260.58
220 Social Security Contributions				196,654.86
230 PSERS Retirement Contributions				872,968.65
250 Unemployment Compensation				794.88
260 Workers' Compensation				22,057.90
<b>Total Personnel Services – Employee Benefits</b>				<b>\$1,665,736.87</b>
<b>300 <u>Purchased Professional and Technical Services</u></b>				
330 Other Professional Services				850.00
350 Security / Safety Services				312,444.80
<b>Total Purchased Professional and Technical Services</b>				<b>\$313,294.80</b>
<b>400 <u>Purchased Property Services</u></b>				
410 Cleaning Services				110,814.15
420 Utility Services				212,029.05
430 Repairs and Maintenance Services				221,644.34
440 Rentals				10,943.91
460 Extermination Services				6,701.56
<b>Total Purchased Property Services</b>				<b>\$562,133.01</b>
<b>500 <u>Other Purchased Services</u></b>				
521 Fire Insurance				74,520.00
523 General Property and Liability Insurance				75,836.00
529 Other Insurance				685.00
530 Communications				45,162.62
580 Travel				4,282.00
<b>Total Other Purchased Services</b>				<b>\$200,485.62</b>
<b>600 <u>Supplies</u></b>				
610 General Supplies	217,355.04	186,757.23		404,112.27
620 Energy				1,240,729.00
<b>Total Supplies</b>	<b>\$217,355.04</b>	<b>\$186,757.23</b>		<b>\$1,644,841.27</b>
<b>700 <u>Property</u></b>				
752 Capital Equipment – Original and Additional				63,927.45
<b>Total Property</b>				<b>\$63,927.45</b>
<b>800 <u>Other Objects</u></b>				
810 Dues and Fees				11,879.56
<b>Total Other Objects</b>				<b>\$11,879.56</b>
<b>Total 2600 Operation and Maintenance of Plant Services</b>	<b>\$217,355.04</b>	<b>\$186,757.23</b>		<b>\$7,076,919.58</b>

LEA : 101631703      Canon-McMillan SD

Printed 5/7/2020 4:28:13 PM

General Fund (10)				
2610 Supervision of Operation and Maintenance of Plant Services	<u>Elementary</u>	<u>Secondary</u>	<u>Federal</u>	<u>Total</u>
100 <u>Personnel Services – Salaries</u>				
100 Personnel Services – Salaries				141,197.05
Total Personnel Services – Salaries				\$141,197.05
200 <u>Personnel Services – Employee Benefits</u>				
210 Group Insurance – Contracted Provider				36,104.42
220 Social Security Contributions				10,655.55
230 PSERS Retirement Contributions				47,226.96
260 Workers' Compensation				1,191.11
Total Personnel Services – Employee Benefits				\$95,178.04
500 <u>Other Purchased Services</u>				
580 Travel				2,523.79
Total Other Purchased Services				\$2,523.79
600 <u>Supplies</u>				
610 General Supplies	426.97	426.96		853.93
Total Supplies	\$426.97	\$426.96		\$853.93
Total 2610 Supervision of Operation and Maintenance of Plant Services	\$426.97	\$426.96		\$239,752.81

LEA : 101631703      Canon-McMillan SD

Printed 5/7/2020 4:28:13 PM

General Fund (10)				
2611 Supervision of Operation and Maintenance of Plant Services – Head of Component	<u>Elementary</u>	<u>Secondary</u>	<u>Federal</u>	<u>Total</u>
100 <u>Personnel Services – Salaries</u>				
100 Personnel Services – Salaries				141,197.05
Total Personnel Services – Salaries				\$141,197.05
200 <u>Personnel Services – Employee Benefits</u>				
210 Group Insurance – Contracted Provider				36,104.42
220 Social Security Contributions				10,655.55
230 PSERS Retirement Contributions				47,226.96
260 Workers' Compensation				1,191.11
Total Personnel Services – Employee Benefits				\$95,178.04
500 <u>Other Purchased Services</u>				
580 Travel				2,523.79
Total Other Purchased Services				\$2,523.79
600 <u>Supplies</u>				
610 General Supplies	426.97	426.96		853.93
Total Supplies	\$426.97	\$426.96		\$853.93
Total 2611 Supervision of Operation and Maintenance of Plant Services – Head of Component	\$426.97	\$426.96		\$239,752.81



LEA : 101631703      Canon-McMillan SD

Printed 5/7/2020 4:28:13 PM

<b>General Fund (10)</b>				
<b>2620 Operation of Buildings Services</b>	<u>Elementary</u>	<u>Secondary</u>	<u>Federal</u>	<u>Total</u>
<b>100 <u>Personnel Services – Salaries</u></b>				
100 Personnel Services – Salaries				2,473,423.95
<b>Total Personnel Services – Salaries</b>				<b>\$2,473,423.95</b>
<b>200 <u>Personnel Services – Employee Benefits</u></b>				
210 Group Insurance – Contracted Provider				537,156.16
220 Social Security Contributions				185,999.31
230 PSERS Retirement Contributions				825,741.69
250 Unemployment Compensation				794.88
260 Workers' Compensation				20,866.79
<b>Total Personnel Services – Employee Benefits</b>				<b>\$1,570,558.83</b>
<b>300 <u>Purchased Professional and Technical Services</u></b>				
330 Other Professional Services				850.00
<b>Total Purchased Professional and Technical Services</b>				<b>\$850.00</b>
<b>400 <u>Purchased Property Services</u></b>				
410 Cleaning Services				46,435.15
420 Utility Services				208,079.44
430 Repairs and Maintenance Services				196,647.14
440 Rentals				10,943.91
460 Extermination Services				6,701.56
<b>Total Purchased Property Services</b>				<b>\$468,807.20</b>
<b>500 <u>Other Purchased Services</u></b>				
521 Fire Insurance				74,520.00
523 General Property and Liability Insurance				75,836.00
529 Other Insurance				685.00
530 Communications				45,162.62
580 Travel				1,758.21
<b>Total Other Purchased Services</b>				<b>\$197,961.83</b>
<b>600 <u>Supplies</u></b>				
610 General Supplies	202,555.32	171,957.54		374,512.86
620 Energy				1,153,269.44
<b>Total Supplies</b>	<b>\$202,555.32</b>	<b>\$171,957.54</b>		<b>\$1,527,782.30</b>
<b>700 <u>Property</u></b>				
752 Capital Equipment – Original and Additional				63,927.45
<b>Total Property</b>				<b>\$63,927.45</b>
<b>800 <u>Other Objects</u></b>				
810 Dues and Fees				11,879.56
<b>Total Other Objects</b>				<b>\$11,879.56</b>
<b>Total 2620 Operation of Buildings Services</b>	<b>\$202,555.32</b>	<b>\$171,957.54</b>		<b>\$6,315,191.12</b>

LEA : 101631703     Canon-McMillan SD

Printed 5/7/2020 4:28:13 PM

General Fund (10)

2630 Care and Upkeep of Grounds Services	<u>Elementary</u>	<u>Secondary</u>	<u>Federal</u>	<u>Total</u>
400 <u>Purchased Property Services</u>				
410 Cleaning Services				64,379.00
420 Utility Services				3,949.61
Total Purchased Property Services				\$68,328.61
600 <u>Supplies</u>				
620 Energy				25,539.07
Total Supplies				\$25,539.07
Total 2630 Care and Upkeep of Grounds Services				\$93,867.68

LEA : 101631703     Canon-McMillan SD

Printed 5/7/2020 4:28:13 PM

General Fund (10)

2650 Vehicle Operation and Maintenance Services (Other Than Student Transportation Vehicles)	<u>Elementary</u>	<u>Secondary</u>	<u>Federal</u>	<u>Total</u>
600 <u>Supplies</u>				
610 General Supplies	246.69	246.68		493.37
620 Energy				61,920.49
<b>Total Supplies</b>	<b>\$246.69</b>	<b>\$246.68</b>		<b>\$62,413.86</b>
<b>Total 2650 Vehicle Operation and Maintenance Services (Other Than Student Transportation Vehicles)</b>	<b>\$246.69</b>	<b>\$246.68</b>		<b>\$62,413.86</b>

LEA : 101631703 Canon-McMillan SD

Printed 5/7/2020 4:28:13 PM

General Fund (10)

2660 Safety and Security Services	<u>Elementary</u>	<u>Secondary</u>	<u>Federal</u>	<u>Total</u>
300 <u>Purchased Professional and Technical Services</u>				
350 Security / Safety Services				312,444.80
Total Purchased Professional and Technical Services				\$312,444.80
400 <u>Purchased Property Services</u>				
430 Repairs and Maintenance Services				24,997.20
Total Purchased Property Services				\$24,997.20
600 <u>Supplies</u>				
610 General Supplies	14,126.06	14,126.05		28,252.11
Total Supplies	\$14,126.06	\$14,126.05		\$28,252.11
Total 2660 Safety and Security Services	\$14,126.06	\$14,126.05		\$365,694.11

LEA : 101631703      Canon-McMillan SD

Printed 5/7/2020 4:28:13 PM

General Fund (10)				
2700 Student Transportation Services	Elementary	Secondary	Federal	Total
<b>100 Personnel Services – Salaries</b>				
100 Personnel Services – Salaries				1,774,520.68
<b>Total Personnel Services – Salaries</b>				<b>\$1,774,520.68</b>
<b>200 Personnel Services – Employee Benefits</b>				
210 Group Insurance – Contracted Provider				681,820.77
220 Social Security Contributions				132,339.08
230 PSERS Retirement Contributions				586,338.57
250 Unemployment Compensation				128.48
260 Workers' Compensation				14,970.94
<b>Total Personnel Services – Employee Benefits</b>				<b>\$1,415,597.84</b>
<b>300 Purchased Professional and Technical Services</b>				
330 Other Professional Services				7,643.79
<b>Total Purchased Professional and Technical Services</b>				<b>\$7,643.79</b>
<b>400 Purchased Property Services</b>				
410 Cleaning Services				2,237.33
430 Repairs and Maintenance Services				161,252.72
<b>Total Purchased Property Services</b>				<b>\$163,490.05</b>
<b>500 Other Purchased Services</b>				
513 Contracted Carriers				2,784,781.90
516 Student Transportation Services From the IU				93,709.51
522 Automotive Liability Insurance				79,074.00
530 Communications				617.08
580 Travel				486.90
<b>Total Other Purchased Services</b>				<b>\$2,958,669.39</b>
<b>600 Supplies</b>				
610 General Supplies				4,278.18
620 Energy				186,316.80
<b>Total Supplies</b>				<b>\$190,594.98</b>
<b>700 Property</b>				
762 Capitalized Equipment - Replacement				318,359.99
<b>Total Property</b>				<b>\$318,359.99</b>
<b>800 Other Objects</b>				
810 Dues and Fees				3,174.50
890 Miscellaneous Expenditures				5,295.67
<b>Total Other Objects</b>				<b>\$8,470.17</b>
<b>Total 2700 Student Transportation Services</b>				<b>\$6,837,346.89</b>

LEA : 101631703      Canon-McMillan SD

Printed 5/7/2020 4:28:13 PM

General Fund (10)				
2710 Supervision of Student Transportation Services	<u>Elementary</u>	<u>Secondary</u>	<u>Federal</u>	<u>Total</u>
100 <u>Personnel Services – Salaries</u>				
100 Personnel Services – Salaries				146,051.69
Total Personnel Services – Salaries				\$146,051.69
200 <u>Personnel Services – Employee Benefits</u>				
210 Group Insurance – Contracted Provider				36,691.68
220 Social Security Contributions				10,963.37
230 PSERS Retirement Contributions				48,833.08
260 Workers' Compensation				1,232.10
Total Personnel Services – Employee Benefits				\$97,720.23
500 <u>Other Purchased Services</u>				
516 Student Transportation Services From the IU				93,709.51
580 Travel				486.90
Total Other Purchased Services				\$94,196.41
600 <u>Supplies</u>				
610 General Supplies				666.08
Total Supplies				\$666.08
Total 2710 Supervision of Student Transportation Services				\$338,634.41

LEA : 101631703      Canon-McMillan SD

Printed 5/7/2020 4:28:13 PM

General Fund (10)				
2711 Supervision of Student Transportation Services – Head of Component	<u>Elementary</u>	<u>Secondary</u>	<u>Federal</u>	<u>Total</u>
100 <u>Personnel Services – Salaries</u>				
100 Personnel Services – Salaries				146,051.69
Total Personnel Services – Salaries				\$146,051.69
200 <u>Personnel Services – Employee Benefits</u>				
210 Group Insurance – Contracted Provider				36,691.68
220 Social Security Contributions				10,963.37
230 PSERS Retirement Contributions				48,833.08
260 Workers' Compensation				1,232.10
Total Personnel Services – Employee Benefits				\$97,720.23
500 <u>Other Purchased Services</u>				
516 Student Transportation Services From the IU				93,709.51
580 Travel				486.90
Total Other Purchased Services				\$94,196.41
600 <u>Supplies</u>				
610 General Supplies				666.08
Total Supplies				\$666.08
Total 2711 Supervision of Student Transportation Services – Head of Component				\$338,634.41

LEA : 101631703      Canon-McMillan SD

Printed 5/7/2020 4:28:13 PM

General Fund (10)				
2720 Vehicle Operation Services				
	<u>Elementary</u>	<u>Secondary</u>	<u>Federal</u>	<u>Total</u>
100 <u>Personnel Services – Salaries</u>				
100 Personnel Services – Salaries				1,379,806.51
Total Personnel Services – Salaries				\$1,379,806.51
200 <u>Personnel Services – Employee Benefits</u>				
210 Group Insurance – Contracted Provider				597,004.18
220 Social Security Contributions				102,573.02
230 PSERS Retirement Contributions				455,223.89
250 Unemployment Compensation				128.48
260 Workers' Compensation				11,640.91
Total Personnel Services – Employee Benefits				\$1,166,570.48
300 <u>Purchased Professional and Technical Services</u>				
330 Other Professional Services				3,303.79
Total Purchased Professional and Technical Services				\$3,303.79
400 <u>Purchased Property Services</u>				
410 Cleaning Services				2,102.84
430 Repairs and Maintenance Services				40,529.52
Total Purchased Property Services				\$42,632.36
500 <u>Other Purchased Services</u>				
513 Contracted Carriers				930,422.07
522 Automotive Liability Insurance				79,074.00
530 Communications				617.08
Total Other Purchased Services				\$1,010,113.15
600 <u>Supplies</u>				
610 General Supplies				3,612.10
620 Energy				825.00
Total Supplies				\$4,437.10
700 <u>Property</u>				
762 Capitalized Equipment - Replacement				318,359.99
Total Property				\$318,359.99
800 <u>Other Objects</u>				
810 Dues and Fees				3,174.50
890 Miscellaneous Expenditures				5,295.67
Total Other Objects				\$8,470.17
Total 2720 Vehicle Operation Services				\$3,933,693.55



LEA : 101631703      Canon-McMillan SD

Printed 5/7/2020 4:28:13 PM

General Fund (10)				
2740 Vehicle Servicing and Maintenance Services	<u>Elementary</u>	<u>Secondary</u>	<u>Federal</u>	<u>Total</u>
100 <u>Personnel Services – Salaries</u>				
100 Personnel Services – Salaries				248,662.48
Total Personnel Services – Salaries				\$248,662.48
200 <u>Personnel Services – Employee Benefits</u>				
210 Group Insurance – Contracted Provider				48,124.91
220 Social Security Contributions				18,802.69
230 PSERS Retirement Contributions				82,281.60
260 Workers' Compensation				2,097.93
Total Personnel Services – Employee Benefits				\$151,307.13
300 <u>Purchased Professional and Technical Services</u>				
330 Other Professional Services				4,340.00
Total Purchased Professional and Technical Services				\$4,340.00
400 <u>Purchased Property Services</u>				
410 Cleaning Services				134.49
430 Repairs and Maintenance Services				120,723.20
Total Purchased Property Services				\$120,857.69
600 <u>Supplies</u>				
620 Energy				185,491.80
Total Supplies				\$185,491.80
Total 2740 Vehicle Servicing and Maintenance Services				\$710,659.10

LEA : 101631703     Canon-McMillan SD

Printed 5/7/2020 4:28:13 PM

General Fund (10)

2750 Nonpublic Transportation	<u>Elementary</u>	<u>Secondary</u>	<u>Federal</u>	<u>Total</u>
500 <u>Other Purchased Services</u>				
513 Contracted Carriers				1,854,359.83
Total Other Purchased Services				\$1,854,359.83
Total 2750 Nonpublic Transportation				\$1,854,359.83

LEA : 101631703      Canon-McMillan SD

Printed 5/7/2020 4:28:13 PM

<b>General Fund (10)</b>				
<b>2800 Support Services – Central</b>				
	<u>Elementary</u>	<u>Secondary</u>	<u>Federal</u>	<u>Total</u>
<b>100 <u>Personnel Services – Salaries</u></b>				
100 Personnel Services – Salaries			15,787.92	472,277.82
<b>Total Personnel Services – Salaries</b>			<b>\$15,787.92</b>	<b>\$472,277.82</b>
<b>200 <u>Personnel Services – Employee Benefits</u></b>				
210 Group Insurance – Contracted Provider				102,659.88
220 Social Security Contributions			1,118.07	35,473.08
230 PSERS Retirement Contributions			5,277.99	156,882.74
240 Tuition Reimbursement				41,060.00
260 Workers' Compensation			133.40	3,984.69
291 Other Retirement Plans			105.92	555.92
<b>Total Personnel Services – Employee Benefits</b>			<b>\$6,635.38</b>	<b>\$340,616.31</b>
<b>300 <u>Purchased Professional and Technical Services</u></b>				
330 Other Professional Services				114,410.95
360 Employee Training and Development Services			4,024.60	17,675.30
<b>Total Purchased Professional and Technical Services</b>			<b>\$4,024.60</b>	<b>\$132,086.25</b>
<b>400 <u>Purchased Property Services</u></b>				
440 Rentals				256,329.35
<b>Total Purchased Property Services</b>				<b>\$256,329.35</b>
<b>500 <u>Other Purchased Services</u></b>				
530 Communications				169,015.72
580 Travel			1,115.00	5,128.15
<b>Total Other Purchased Services</b>			<b>\$1,115.00</b>	<b>\$174,143.87</b>
<b>600 <u>Supplies</u></b>				
610 General Supplies			600.00	39,589.02
650 Supplies & Fees – Technology Related				79,616.85
<b>Total Supplies</b>			<b>\$600.00</b>	<b>\$119,205.87</b>
<b>700 <u>Property</u></b>				
752 Capital Equipment – Original and Additional				289,068.00
<b>Total Property</b>				<b>\$289,068.00</b>
<b>800 <u>Other Objects</u></b>				
810 Dues and Fees				995.30
<b>Total Other Objects</b>				<b>\$995.30</b>
<b>Total 2800 Support Services – Central</b>			<b>\$28,162.90</b>	<b>\$1,784,722.77</b>

LEA : 101631703     Canon-McMillan SD

Printed 5/7/2020 4:28:13 PM

<b>General Fund (10)</b>				
<b>2810 Planning, Research, Development and Evaluation Services</b>	<b><u>Elementary</u></b>	<b><u>Secondary</u></b>	<b><u>Federal</u></b>	<b><u>Total</u></b>
<b>100 <u>Personnel Services – Salaries</u></b>				
100 Personnel Services – Salaries				266,026.10
<b>Total Personnel Services – Salaries</b>				<b>\$266,026.10</b>
<b>200 <u>Personnel Services – Employee Benefits</u></b>				
210 Group Insurance – Contracted Provider				46,445.40
220 Social Security Contributions				20,060.37
230 PSERS Retirement Contributions				88,564.77
260 Workers' Compensation				2,244.36
291 Other Retirement Plans				450.00
<b>Total Personnel Services – Employee Benefits</b>				<b>\$157,764.90</b>
<b>300 <u>Purchased Professional and Technical Services</u></b>				
330 Other Professional Services				43,366.50
<b>Total Purchased Professional and Technical Services</b>				<b>\$43,366.50</b>
<b>400 <u>Purchased Property Services</u></b>				
440 Rentals				256,329.35
<b>Total Purchased Property Services</b>				<b>\$256,329.35</b>
<b>500 <u>Other Purchased Services</u></b>				
530 Communications				168,085.21
580 Travel				3,362.47
<b>Total Other Purchased Services</b>				<b>\$171,447.68</b>
<b>600 <u>Supplies</u></b>				
610 General Supplies				38,215.75
650 Supplies & Fees – Technology Related				79,616.85
<b>Total Supplies</b>				<b>\$117,832.60</b>
<b>700 <u>Property</u></b>				
752 Capital Equipment – Original and Additional				289,068.00
<b>Total Property</b>				<b>\$289,068.00</b>
<b>800 <u>Other Objects</u></b>				
810 Dues and Fees				786.30
<b>Total Other Objects</b>				<b>\$786.30</b>
<b>Total 2810 Planning, Research, Development and Evaluation Services</b>				<b>\$1,302,621.43</b>

LEA : 101631703     Canon-McMillan SD

Printed 5/7/2020 4:28:13 PM

General Fund (10)

2820 Information Services

<u>Elementary</u>	<u>Secondary</u>	<u>Federal</u>	<u>Total</u>
-------------------	------------------	----------------	--------------

300 Purchased Professional and Technical Services

330 Other Professional Services			31,900.00
---------------------------------	--	--	-----------

<b>Total Purchased Professional and Technical Services</b>			<b>\$31,900.00</b>
--	--	--	--------------------

<b>Total 2820 Information Services</b>			<b>\$31,900.00</b>
--	--	--	--------------------

LEA : 101631703     Canon-McMillan SD

Printed 5/7/2020 4:28:13 PM

General Fund (10)

2823 Public Information Services

Elementary                      Secondary                      Federal                      Total

300 Purchased Professional and Technical Services

330 Other Professional Services 31,900.00

**Total Purchased Professional and Technical Services \$31,900.00**

**Total 2823 Public Information Services \$31,900.00**

LEA : 101631703     Canon-McMillan SD

Printed 5/7/2020 4:28:13 PM

General Fund (10)				
2830 Staff Services	<u>Elementary</u>	<u>Secondary</u>	<u>Federal</u>	<u>Total</u>
100 <u>Personnel Services – Salaries</u>				
100 Personnel Services – Salaries				190,463.80
Total Personnel Services – Salaries				\$190,463.80
200 <u>Personnel Services – Employee Benefits</u>				
210 Group Insurance – Contracted Provider				56,214.48
220 Social Security Contributions				14,294.64
230 PSERS Retirement Contributions				63,039.98
240 Tuition Reimbursement				41,060.00
260 Workers' Compensation				1,606.93
Total Personnel Services – Employee Benefits				\$176,216.03
300 <u>Purchased Professional and Technical Services</u>				
330 Other Professional Services				39,144.45
360 Employee Training and Development Services			4,024.60	17,675.30
Total Purchased Professional and Technical Services			\$4,024.60	\$56,819.75
500 <u>Other Purchased Services</u>				
530 Communications				930.51
580 Travel				650.68
Total Other Purchased Services				\$1,581.19
600 <u>Supplies</u>				
610 General Supplies				773.27
Total Supplies				\$773.27
800 <u>Other Objects</u>				
810 Dues and Fees				209.00
Total Other Objects				\$209.00
Total 2830 Staff Services			\$4,024.60	\$426,063.04

LEA : 101631703      Canon-McMillan SD

Printed 5/7/2020 4:28:13 PM

General Fund (10)				
2831 Supervision of Staff Services	<u>Elementary</u>	<u>Secondary</u>	<u>Federal</u>	<u>Total</u>
100 <u>Personnel Services – Salaries</u>				
100 Personnel Services – Salaries				190,463.80
Total Personnel Services – Salaries				\$190,463.80
200 <u>Personnel Services – Employee Benefits</u>				
210 Group Insurance – Contracted Provider				56,214.48
220 Social Security Contributions				14,294.64
230 PSERS Retirement Contributions				63,039.98
260 Workers' Compensation				1,606.93
Total Personnel Services – Employee Benefits				\$135,156.03
500 <u>Other Purchased Services</u>				
530 Communications				930.51
580 Travel				650.68
Total Other Purchased Services				\$1,581.19
600 <u>Supplies</u>				
610 General Supplies				773.27
Total Supplies				\$773.27
800 <u>Other Objects</u>				
810 Dues and Fees				209.00
Total Other Objects				\$209.00
Total 2831 Supervision of Staff Services				\$328,183.29



LEA : 101631703     Canon-McMillan SD

Printed 5/7/2020 4:28:13 PM

General Fund (10)

2832 Recruitment and Placement Services	<u>Elementary</u>	<u>Secondary</u>	<u>Federal</u>	<u>Total</u>
300 <u>Purchased Professional and Technical Services</u>				
330 Other Professional Services				39,144.45
Total Purchased Professional and Technical Services				\$39,144.45
Total 2832 Recruitment and Placement Services				\$39,144.45

LEA : 101631703 Canon-McMillan SD

Printed 5/7/2020 4:28:13 PM

General Fund (10)

2834 Staff Development Services – Non-Instructional, Certified Staff Only	<u>Elementary</u>	<u>Secondary</u>	<u>Federal</u>	<u>Total</u>
200 <u>Personnel Services – Employee Benefits</u>				
240 Tuition Reimbursement				41,060.00
Total Personnel Services – Employee Benefits				\$41,060.00
300 <u>Purchased Professional and Technical Services</u>				
360 Employee Training and Development Services			4,024.60	9,971.10
Total Purchased Professional and Technical Services			\$4,024.60	\$9,971.10
Total 2834 Staff Development Services – Non-Instructional, Certified Staff Only			\$4,024.60	\$51,031.10

LEA : 101631703     Canon-McMillan SD

Printed 5/7/2020 4:28:13 PM

General Fund (10)

2836 Staff Development Services – Non-Instructional, Non-Certified Staff Only	<u>Elementary</u>	<u>Secondary</u>	<u>Federal</u>	<u>Total</u>
300 <u>Purchased Professional and Technical Services</u>				
360 Employee Training and Development Services				7,704.20
Total Purchased Professional and Technical Services				\$7,704.20
Total 2836 Staff Development Services – Non-Instructional, Non-Certified Staff Only				\$7,704.20

LEA : 101631703      Canon-McMillan SD

Printed 5/7/2020 4:28:13 PM

General Fund (10)				
2850 State and Federal Agency Liaison Services	<u>Elementary</u>	<u>Secondary</u>	<u>Federal</u>	<u>Total</u>
100 <u>Personnel Services – Salaries</u>				
100 Personnel Services – Salaries			15,787.92	15,787.92
Total Personnel Services – Salaries			\$15,787.92	\$15,787.92
200 <u>Personnel Services – Employee Benefits</u>				
220 Social Security Contributions			1,118.07	1,118.07
230 PSERS Retirement Contributions			5,277.99	5,277.99
260 Workers’ Compensation			133.40	133.40
291 Other Retirement Plans			105.92	105.92
Total Personnel Services – Employee Benefits			\$6,635.38	\$6,635.38
500 <u>Other Purchased Services</u>				
580 Travel			1,115.00	1,115.00
Total Other Purchased Services			\$1,115.00	\$1,115.00
600 <u>Supplies</u>				
610 General Supplies			600.00	600.00
Total Supplies			\$600.00	\$600.00
Total 2850 State and Federal Agency Liaison Services			\$24,138.30	\$24,138.30

LEA : 101631703     Canon-McMillan SD

Printed 5/7/2020 4:28:13 PM

General Fund (10)

2900 Other Support Services		<u>Elementary</u>	<u>Secondary</u>	<u>Federal</u>	<u>Total</u>
500 <u>Other Purchased Services</u>					
595 IU Payments By Withholding					87,821.18
Total Other Purchased Services					\$87,821.18
800 <u>Other Objects</u>					
899 Pass-Through Funds					1,021,433.97
Total Other Objects					\$1,021,433.97
Total 2900 Other Support Services					\$1,109,255.15

LEA : 101631703     Canon-McMillan SD

Printed 5/7/2020 4:28:13 PM

General Fund (10)

2910 Support Services Not Listed Elsewhere In the 2000 Series

Elementary                      Secondary                      Federal                      Total

500 Other Purchased Services

595 IU Payments By Withholding 87,821.18

**Total Other Purchased Services \$87,821.18**

**Total 2910 Support Services Not Listed Elsewhere In the 2000 Series \$87,821.18**

Page 111

LEA : 101631703      Canon-McMillan SD

Printed 5/7/2020 4:28:20 PM

General Fund (10)

3000 Operation of Non-Instructional Services		Total
100 <u>Personnel Services – Salaries</u>		
100 Personnel Services – Salaries		892,498.30
Total Personnel Services – Salaries		\$892,498.30
200 <u>Personnel Services – Employee Benefits</u>		
210 Group Insurance – Contracted Provider		26,951.52
220 Social Security Contributions		67,956.17
230 PSERS Retirement Contributions		281,234.34
250 Unemployment Compensation		2,381.53
260 Workers' Compensation		7,530.85
280 Other Post-Employment Benefits (OPEB)		7,457.64
291 Other Retirement Plans		10,595.05
Total Personnel Services – Employee Benefits		\$404,107.10
300 <u>Purchased Professional and Technical Services</u>		
330 Other Professional Services		(7,371.68)
350 Security / Safety Services		12,286.76
390 Other Purchased Professional and Technical Services		49,194.00
Total Purchased Professional and Technical Services		\$54,109.08
400 <u>Purchased Property Services</u>		
410 Cleaning Services		897.99
430 Repairs and Maintenance Services		34,081.10
Total Purchased Property Services		\$34,979.09
500 <u>Other Purchased Services</u>		
580 Travel		38,670.12
Total Other Purchased Services		\$38,670.12
600 <u>Supplies</u>		
610 General Supplies		137,581.34
640 Books and Periodicals		228.50
Total Supplies		\$137,809.84
700 <u>Property</u>		
752 Capital Equipment – Original and Additional		48,039.07
762 Capitalized Equipment - Replacement		26,825.73
Total Property		\$74,864.80
800 <u>Other Objects</u>		
810 Dues and Fees		83,344.37
860 Grants To Municipal and Community Service Organizations		91,945.50
890 Miscellaneous Expenditures		14,836.16
Total Other Objects		\$190,126.03
Total 3000 Operation of Non-Instructional Services		\$1,827,164.36



LEA : 101631703      Canon-McMillan SD

Printed 5/7/2020 4:28:20 PM

<b>General Fund (10)</b>				
<b>3200 Student Activities</b>				
	<u>Elementary</u>	<u>Secondary</u>	<u>Federal</u>	<u>Total</u>
<b>100 <u>Personnel Services – Salaries</u></b>				
100 Personnel Services – Salaries				890,438.30
<b>Total Personnel Services – Salaries</b>				<b>\$890,438.30</b>
<b>200 <u>Personnel Services – Employee Benefits</u></b>				
210 Group Insurance – Contracted Provider				26,951.52
220 Social Security Contributions				67,800.08
230 PSERS Retirement Contributions				280,545.68
250 Unemployment Compensation				2,381.53
260 Workers' Compensation				7,507.82
280 Other Post-Employment Benefits (OPEB)				7,457.64
291 Other Retirement Plans				10,595.05
<b>Total Personnel Services – Employee Benefits</b>				<b>\$403,239.32</b>
<b>300 <u>Purchased Professional and Technical Services</u></b>				
330 Other Professional Services				52,296.63
350 Security / Safety Services				12,286.76
390 Other Purchased Professional and Technical Services				49,194.00
<b>Total Purchased Professional and Technical Services</b>				<b>\$113,777.39</b>
<b>400 <u>Purchased Property Services</u></b>				
410 Cleaning Services				897.99
430 Repairs and Maintenance Services				34,081.10
<b>Total Purchased Property Services</b>				<b>\$34,979.09</b>
<b>500 <u>Other Purchased Services</u></b>				
580 Travel				38,670.12
<b>Total Other Purchased Services</b>				<b>\$38,670.12</b>
<b>600 <u>Supplies</u></b>				
610 General Supplies				117,416.10
640 Books and Periodicals				228.50
<b>Total Supplies</b>				<b>\$117,644.60</b>
<b>700 <u>Property</u></b>				
752 Capital Equipment – Original and Additional				48,039.07
762 Capitalized Equipment - Replacement				26,825.73
<b>Total Property</b>				<b>\$74,864.80</b>
<b>800 <u>Other Objects</u></b>				
810 Dues and Fees				44,902.62
890 Miscellaneous Expenditures				14,836.16
<b>Total Other Objects</b>				<b>\$59,738.78</b>
<b>Total 3200 Student Activities</b>				<b>\$1,733,352.40</b>

LEA : 101631703 Canon-McMillan SD

Printed 5/7/2020 4:28:20 PM

General Fund (10)

3300 Community Services	Elementary	Secondary	Federal	Total
100 <u>Personnel Services – Salaries</u>				
100 Personnel Services – Salaries				2,060.00
Total Personnel Services – Salaries				\$2,060.00
200 <u>Personnel Services – Employee Benefits</u>				
220 Social Security Contributions				156.09
230 PSERS Retirement Contributions				688.66
260 Workers’ Compensation				23.03
Total Personnel Services – Employee Benefits				\$867.78
300 <u>Purchased Professional and Technical Services</u>				
330 Other Professional Services				(59,668.31)
Total Purchased Professional and Technical Services				(\$59,668.31)
600 <u>Supplies</u>				
610 General Supplies			1,866.46	20,165.24
Total Supplies			\$1,866.46	\$20,165.24
800 <u>Other Objects</u>				
810 Dues and Fees				38,441.75
860 Grants To Municipal and Community Service Organizations				91,945.50
Total Other Objects				\$130,387.25
Total 3300 Community Services			\$1,866.46	\$93,811.96

LEA : 101631703 Canon-McMillan SD

Printed 5/7/2020 4:28:27 PM

General Fund (10)

4000 Facilities Acquisition, Construction and Improvement Services		<u>Total</u>
300 <u>Purchased Professional and Technical Services</u>		
330 Other Professional Services		51,141.00
Total Purchased Professional and Technical Services		\$51,141.00
400 <u>Purchased Property Services</u>		
430 Repairs and Maintenance Services		250,895.00
Total Purchased Property Services		\$250,895.00
700 <u>Property</u>		
762 Capitalized Equipment - Replacement		198,583.53
Total Property		\$198,583.53
Total 4000 Facilities Acquisition, Construction and Improvement Services		\$500,619.53

LEA : 101631703     Canon-McMillan SD

Printed 5/7/2020 4:28:27 PM

General Fund (10)

4400 Architecture and Engineering Services / Educational Specifications – Improvements	<u>Elementary</u>	<u>Secondary</u>	<u>Federal</u>	<u>Total</u>
300 <u>Purchased Professional and Technical Services</u>				
330 Other Professional Services				51,141.00
Total Purchased Professional and Technical Services				\$51,141.00
Total 4400 Architecture and Engineering Services / Educational Specifications – Improvements				\$51,141.00

LEA : 101631703     Canon-McMillan SD

Printed 5/7/2020 4:28:27 PM

General Fund (10)

4600 Existing Building Improvement Services	<u>Elementary</u>	<u>Secondary</u>	<u>Federal</u>	<u>Total</u>
400 <u>Purchased Property Services</u>				
430 Repairs and Maintenance Services				250,895.00
Total Purchased Property Services				\$250,895.00
700 <u>Property</u>				
762 Capitalized Equipment - Replacement				198,583.53
Total Property				\$198,583.53
Total 4600 Existing Building Improvement Services				\$449,478.53

LEA : 101631703      Canon-McMillan SD

Printed 5/7/2020 4:28:33 PM

General Fund (10)		
5000 Other Expenditures and Financing Uses		<u>Total</u>
800	<u>Other Objects</u>	
830	Interest	7,019,469.82
Total Other Objects		\$7,019,469.82
900	<u>Other Uses of Funds</u>	
910	Redemption of Principal	2,506,540.00
939	Other Fund Transfers	1,000,000.00
Total Other Uses of Funds		\$3,506,540.00
Total 5000 Other Expenditures and Financing Uses		\$10,526,009.82

LEA : 101631703 Canon-McMillan SD

Printed 5/7/2020 4:28:33 PM

General Fund (10)

5100 Debt Service / Other Expenditures and Financing Uses	<u>Elementary</u>	<u>Secondary</u>	<u>Federal</u>	<u>Total</u>
800 <u>Other Objects</u>				
830 Interest				7,019,469.82
Total Other Objects				\$7,019,469.82
900 <u>Other Uses of Funds</u>				
910 Redemption of Principal				2,506,540.00
Total Other Uses of Funds				\$2,506,540.00
Total 5100 Debt Service / Other Expenditures and Financing Uses				\$9,526,009.82

LEA : 101631703     Canon-McMillan SD

Printed 5/7/2020 4:28:33 PM

General Fund (10)

5110 Debt Service	<u>Elementary</u>	<u>Secondary</u>	<u>Federal</u>	<u>Total</u>
800 <u>Other Objects</u>				
830 Interest				7,019,469.82
Total Other Objects				\$7,019,469.82
900 <u>Other Uses of Funds</u>				
910 Redemption of Principal				2,506,540.00
Total Other Uses of Funds				\$2,506,540.00
Total 5110 Debt Service				\$9,526,009.82



LEA : 101631703     Canon-McMillan SD

Printed 5/7/2020 4:28:33 PM

General Fund (10)

5200 Interfund Transfers – Out	<u>Elementary</u>	<u>Secondary</u>	<u>Federal</u>	<u>Total</u>
900 <u>Other Uses of Funds</u>				
939 Other Fund Transfers				1,000,000.00
Total Other Uses of Funds				\$1,000,000.00
Total 5200 Interfund Transfers – Out				\$1,000,000.00

LEA : 101631703     Canon-McMillan SD

Printed 5/7/2020 4:28:33 PM

General Fund (10)

5230 Capital Projects Fund Transfers	<u>Elementary</u>	<u>Secondary</u>	<u>Federal</u>	<u>Total</u>
900 <u>Other Uses of Funds</u>				
939 Other Fund Transfers				1,000,000.00
Total Other Uses of Funds				\$1,000,000.00
Total 5230 Capital Projects Fund Transfers				\$1,000,000.00

LEA : 101631703      Canon-McMillan SD

Printed 5/7/2020 4:28:21 PM

Athletic / School-Sponsored Extra Curricular Activities Fund (29)

<b>3000 Operation of Non-Instructional Services</b>	<b><u>Total</u></b>
<b>100 <u>Personnel Services – Salaries</u></b>	
100 Personnel Services – Salaries	17,392.39
<b>Total Personnel Services – Salaries</b>	<b>\$17,392.39</b>
<b>200 <u>Personnel Services – Employee Benefits</u></b>	
220 Social Security Contributions	1,308.24
230 PSERS Retirement Contributions	5,814.27
250 Unemployment Compensation	145.56
<b>Total Personnel Services – Employee Benefits</b>	<b>\$7,268.07</b>
<b>300 <u>Purchased Professional and Technical Services</u></b>	
330 Other Professional Services	27,395.00
350 Security / Safety Services	1,614.21
<b>Total Purchased Professional and Technical Services</b>	<b>\$29,009.21</b>
<b>500 <u>Other Purchased Services</u></b>	
580 Travel	2,430.12
<b>Total Other Purchased Services</b>	<b>\$2,430.12</b>
<b>600 <u>Supplies</u></b>	
610 General Supplies	46,964.88
<b>Total Supplies</b>	<b>\$46,964.88</b>
<b>800 <u>Other Objects</u></b>	
810 Dues and Fees	989.15
<b>Total Other Objects</b>	<b>\$989.15</b>
<b>Total 3000 Operation of Non-Instructional Services</b>	<b>\$104,053.82</b>

LEA : 101631703     Canon-McMillan SD

Printed 5/7/2020 4:28:21 PM

Athletic / School-Sponsored Extra Curricular Activities Fund (29)

3200 Student Activities	<u>Elementary</u>	<u>Secondary</u>	<u>Federal</u>	<u>Total</u>
100 <u>Personnel Services – Salaries</u>				
100 Personnel Services – Salaries				17,392.39
<b>Total Personnel Services – Salaries</b>				<b>\$17,392.39</b>
200 <u>Personnel Services – Employee Benefits</u>				
220 Social Security Contributions				1,308.24
230 PSERS Retirement Contributions				5,814.27
250 Unemployment Compensation				145.56
<b>Total Personnel Services – Employee Benefits</b>				<b>\$7,268.07</b>
300 <u>Purchased Professional and Technical Services</u>				
330 Other Professional Services				27,395.00
350 Security / Safety Services				1,614.21
<b>Total Purchased Professional and Technical Services</b>				<b>\$29,009.21</b>
500 <u>Other Purchased Services</u>				
580 Travel				2,430.12
<b>Total Other Purchased Services</b>				<b>\$2,430.12</b>
600 <u>Supplies</u>				
610 General Supplies				46,964.88
<b>Total Supplies</b>				<b>\$46,964.88</b>
800 <u>Other Objects</u>				
810 Dues and Fees				989.15
<b>Total Other Objects</b>				<b>\$989.15</b>
<b>Total 3200 Student Activities</b>				<b>\$104,053.82</b>

LEA : 101631703     Canon-McMillan SD

Printed 5/7/2020 4:28:29 PM

Capital Reserve Fund - § 1431 (32)

4000 Facilities Acquisition, Construction and Improvement Services

Total

300 Purchased Professional and Technical Services

330 Other Professional Services	6,981.53
---------------------------------	----------

Total Purchased Professional and Technical Services	\$6,981.53
---	------------

Total 4000 Facilities Acquisition, Construction and Improvement Services	\$6,981.53
--	------------

LEA : 101631703     Canon-McMillan SD

Printed 5/7/2020 4:28:29 PM

Capital Reserve Fund - § 1431 (32)

4600 Existing Building Improvement Services

<u>Elementary</u>	<u>Secondary</u>	<u>Federal</u>	<u>Total</u>
-------------------	------------------	----------------	--------------

300 Purchased Professional and Technical Services

330 Other Professional Services			6,981.53
---------------------------------	--	--	----------

<b>Total Purchased Professional and Technical Services</b>			<b>\$6,981.53</b>
--	--	--	-------------------

<b>Total 4600 Existing Building Improvement Services</b>			<b>\$6,981.53</b>
--	--	--	-------------------

LEA : 101631703     Canon-McMillan SD

Printed 5/7/2020 4:28:30 PM

Other Capital Projects Fund (39)

4000 Facilities Acquisition, Construction and Improvement Services

Total

300 Purchased Professional and Technical Services

330 Other Professional Services	816,383.54
---------------------------------	------------

<b>Total Purchased Professional and Technical Services</b>	<b>\$816,383.54</b>
--	---------------------

400 Purchased Property Services

450 Construction Services	9,102,105.17
---------------------------	--------------

<b>Total Purchased Property Services</b>	<b>\$9,102,105.17</b>
--	-----------------------

700 Property

710 Land and Improvements	246,028.80
---------------------------	------------

752 Capital Equipment – Original and Additional	324,868.54
---	------------

756 Capitalized Technology Equipment – Original	148,672.73
---	------------

<b>Total Property</b>	<b>\$719,570.07</b>
-----------------------	---------------------

<b>Total 4000 Facilities Acquisition, Construction and Improvement Services</b>	<b>\$10,638,058.78</b>
---	------------------------

LEA : 101631703     Canon-McMillan SD

Printed 5/7/2020 4:28:30 PM

Other Capital Projects Fund (39)

4100 Site Acquisition Services – Original and Additional

Elementary                      Secondary                      Federal                      Total

300 Purchased Professional and Technical Services

330 Other Professional Services 84,455.40

**Total Purchased Professional and Technical Services \$84,455.40**

700 Property

710 Land and Improvements 246,028.80

**Total Property \$246,028.80**

**Total 4100 Site Acquisition Services – Original and Additional \$330,484.20**



LEA : 101631703     Canon-McMillan SD

Printed 5/7/2020 4:28:30 PM

Other Capital Projects Fund (39)

4300 Architecture and Engineering Services / Educational Specifications Development – Original and Additional	<u>Elementary</u>	<u>Secondary</u>	<u>Federal</u>	<u>Total</u>
300 <u>Purchased Professional and Technical Services</u>				
330 Other Professional Services				654,205.00
Total Purchased Professional and Technical Services				\$654,205.00
Total 4300 Architecture and Engineering Services / Educational Specifications Development – Original and Additional				\$654,205.00

LEA : 101631703     Canon-McMillan SD

Printed 5/7/2020 4:28:30 PM

Other Capital Projects Fund (39)

4500 Building Acquisition and Construction Services – Original and Additional	<u>Elementary</u>	<u>Secondary</u>	<u>Federal</u>	<u>Total</u>
300 <u>Purchased Professional and Technical Services</u>				
330 Other Professional Services				77,723.14
Total Purchased Professional and Technical Services				\$77,723.14
400 <u>Purchased Property Services</u>				
450 Construction Services				9,102,105.17
Total Purchased Property Services				\$9,102,105.17
700 <u>Property</u>				
752 Capital Equipment – Original and Additional				324,868.54
756 Capitalized Technology Equipment – Original				148,672.73
Total Property				\$473,541.27
Total 4500 Building Acquisition and Construction Services – Original and Additional				\$9,653,369.58

	<u>General Fund(10)</u>	<u>Public Purpose Trust(27)</u>	<u>Other Compt Approved (28)</u>	<u>Athletic / Activity(29)</u>	<u>Capital Reserve (690. 1850)(31)</u>
<b>1000 <u>Instruction</u></b>					
1100 Regular Programs - Elementary / Secondary	29,976,528.55				
1200 Special Programs - Elementary / Secondary	11,955,197.81				
1300 Vocational Education	2,401,142.63				
1400 Other Instructional Programs - Elementary / Secondary	326,742.05				
1500 Nonpublic School Programs	23,288.12				
<b>Total Instruction</b>	<b>\$44,682,899.16</b>				
<b>2000 <u>Support Services</u></b>					
2100 Support Services - Students	2,709,663.06				
2200 Support Services - Instructional Staff	1,390,208.05				
2300 Support Services - Administration	4,264,590.50				
2400 Support Services - Pupil Health	1,586,099.16				
2500 Support Services - Business	810,049.30				
2600 Operation and Maintenance of Plant Services	7,076,919.58				
2700 Student Transportation Services	6,837,346.89				
2800 Support Services - Central	1,784,722.77				
2900 Other Support Services	1,109,255.15				
<b>Total Support Services</b>	<b>\$27,568,854.46</b>				
<b>3000 <u>Operation of Non-Instructional Services</u></b>					
3200 Student Activities	1,733,352.40			104,053.82	
3300 Community Services	93,811.96				
<b>Total Operation of Non-Instructional Services</b>	<b>\$1,827,164.36</b>			<b>\$104,053.82</b>	
<b>4000 <u>Facilities Acquisition, Construction and Improvement Services</u></b>					
4100 Site Acquisition Services - Original and Additional					
4300 Architecture and Engineering Services / Educational Specifications Development - Original and Additional					
4400 Architecture and Engineering Services / Educational Specifications - Improvements	51,141.00				
4500 Building Acquisition and Construction Services - Original and Additional					
4600 Existing Building Improvement Services	449,478.53				
<b>Total Facilities Acquisition, Construction and Improvement Services</b>	<b>\$500,619.53</b>				
<b>5000 <u>Other Expenditures and Financing Uses</u></b>					
5100 Debt Service / Other Expenditures and Financing Uses	9,526,009.82				
5200 Interfund Transfers - Out	1,000,000.00				
<b>Total Other Expenditures and Financing Uses</b>	<b>\$10,526,009.82</b>				
<b>TOTAL ACTUAL EXPENDITURES &amp; OTHER FINANCING USES</b>	<b>\$85,105,547.33</b>			<b>\$104,053.82</b>	

LEA : 101631703 Canon-McMillan SD

Printed 5/7/2020 4:28:43 PM

	<u>Capital Reserve (1431)(32)</u>	<u>Other Capital Projects Fund(39)</u>	<u>Debt Service(40)</u>	<u>Permanent(90)</u>	<u>Total</u>
<b>1000 <u>Instruction</u></b>					
1100 Regular Programs - Elementary / Secondary					29,976,528.55
1200 Special Programs - Elementary / Secondary					11,955,197.81
1300 Vocational Education					2,401,142.63
1400 Other Instructional Programs - Elementary / Secondary					326,742.05
1500 Nonpublic School Programs					23,288.12
<b>Total Instruction</b>					<b>\$44,682,899.16</b>
<b>2000 <u>Support Services</u></b>					
2100 Support Services - Students					2,709,663.06
2200 Support Services - Instructional Staff					1,390,208.05
2300 Support Services - Administration					4,264,590.50
2400 Support Services - Pupil Health					1,586,099.16
2500 Support Services - Business					810,049.30
2600 Operation and Maintenance of Plant Services					7,076,919.58
2700 Student Transportation Services					6,837,346.89
2800 Support Services - Central					1,784,722.77
2900 Other Support Services					1,109,255.15
<b>Total Support Services</b>					<b>\$27,568,854.46</b>
<b>3000 <u>Operation of Non-Instructional Services</u></b>					
3200 Student Activities					1,837,406.22
3300 Community Services					93,811.96
<b>Total Operation of Non-Instructional Services</b>					<b>\$1,931,218.18</b>
<b>4000 <u>Facilities Acquisition, Construction and Improvement Services</u></b>					
4100 Site Acquisition Services - Original and Additional		330,484.20			330,484.20
4300 Architecture and Engineering Services / Educational Specifications Development - Original and Additional		654,205.00			654,205.00
4400 Architecture and Engineering Services / Educational Specifications - Improvements					51,141.00
4500 Building Acquisition and Construction Services - Original and Additional		9,653,369.58			9,653,369.58
4600 Existing Building Improvement Services	6,981.53				456,460.06
<b>Total Facilities Acquisition, Construction and Improvement Services</b>	<b>\$6,981.53</b>	<b>\$10,638,058.78</b>			<b>\$11,145,659.84</b>
<b>5000 <u>Other Expenditures and Financing Uses</u></b>					
5100 Debt Service / Other Expenditures and Financing Uses					9,526,009.82
5200 Interfund Transfers - Out					1,000,000.00
<b>Total Other Expenditures and Financing Uses</b>					<b>\$10,526,009.82</b>
<b>TOTAL ACTUAL EXPENDITURES &amp; OTHER FINANCING USES</b>	<b>\$6,981.53</b>	<b>\$10,638,058.78</b>			<b>\$95,854,641.46</b>

LEA : 101631703     Canon-McMillan SD

Printed 5/7/2020 4:28:49 PM

PSERS Salary Data (Salary Data should relate to the General Fund only)

Amount	Description	Amount
	Total Salary Base for salaries subject to PSERS withholding	32,544,167.12
	Total Federally Funded salaries subject to PSERS withholding	352,794.37

Title I Expenditure Data

Amount	Description	Amount
	Expenditures Funded with Current Title I Funds	418,986.70
	Expenditures Funded with Carry over Title I Funds	23,046.98
Total	Title I Expenditure Data	\$442,033.68

Benefits for Staff Relative to Collective Bargaining Agreements

	OBJECT	COVERED	NOT COVERED	TOTAL
10 General Fund	No Self Insurance data to report			
	211 Medical Insurance	7,228,475.69	643,520.28	7,871,995.97
	212 Dental Insurance	226,688.18	20,656.16	247,344.34
	215 Eye Care Insurance		2,417.32	2,417.32
	216 Prescription Insurance			
	271 Self-Insurance Medical Benefits			
	272 Self-Insurance Dental Benefits			
	275 Self-Insurance Eye Care Benefits			
	276 Self-Insurance Prescription Benefits			
	FUND TOTAL	\$7,455,163.87	\$666,593.76	\$8,121,757.63
50 Enterprise Fund	No Self Insurance data to report			
	211 Medical Insurance	209,333.72		209,333.72
	212 Dental Insurance	4,907.90		4,907.90
	215 Eye Care Insurance	10.30		10.30
	216 Prescription Insurance			
	271 Self-Insurance Medical Benefits			
	272 Self-Insurance Dental Benefits			
	275 Self-Insurance Eye Care Benefits			
	276 Self-Insurance Prescription Benefits			
	FUND TOTAL	\$214,251.92		\$214,251.92
60 Internal Service Fund	No Self Insurance data to report			
	211 Medical Insurance			
	212 Dental Insurance			
	215 Eye Care Insurance			
	216 Prescription Insurance			
	271 Self-Insurance Medical Benefits			
	272 Self-Insurance Dental Benefits			
	275 Self-Insurance Eye Care Benefits			
	276 Self-Insurance Prescription Benefits			
	FUND TOTAL			
Total of All Funds		\$7,669,415.79	\$666,593.76	\$8,336,009.55

LEA : 101631703     Canon-McMillan SD

Printed 5/7/2020 4:28:55 PM

Function	Special Education (Prior Year)	Nonspecial Education (Prior Year)	Total (Prior Year)	Special Education (Current Year)	Nonspecial Education (Current Year)	Total (Current Year)
2120 Guidance Services	218,157.74	1,375,747.81	1,593,905.55	232,890.56	1,373,504.15	1,606,394.71
2140 Psychological Services	363,519.61		363,519.61	424,174.78		424,174.78
2150 Speech Pathology and Audiology Services						
2160 Social Work Services						
2260 Instruction and Curriculum Development Services	140,169.88	286,029.08	426,198.96	142,390.22	287,911.49	430,301.71
2350 Legal and Accounting Services	25,258.50	122,317.49	147,575.99	30,491.00	84,936.88	115,427.88
2420 Medical Services	924,502.06	4,000.00	928,502.06	797,136.39	4,000.00	801,136.39
2440 Nursing Services	100,169.17	631,687.53	731,856.70	113,702.73	670,577.54	784,280.27
2700 Student Transportation Services	1,449,728.07	4,439,808.36	5,889,536.43	1,897,436.29	4,864,430.95	6,761,867.24
<b>Total</b>	<b>\$3,221,505.03</b>	<b>\$6,859,590.27</b>	<b>\$10,081,095.30</b>	<b>\$3,638,221.97</b>	<b>\$7,285,361.01</b>	<b>\$10,923,582.98</b>

LEA : 101631703     Canon-McMillan SD

Printed 5/7/2020 4:28:58 PM

(PRINCIPAL AMOUNTS ONLY)								
<u>GOVERNMENTAL FUNDS/ ACTIVITIES</u>	Short-Term Borrowing	General Obligation Bonds/Notes	Authority Building Obligations	Other Long-Term Debt	Other Post- Employment Benefits (OPEB)	Compensated Absences	Net Pension Liability	Total
1. Debt at Beginning of Fiscal Year		115,353,970.00			9,310,932.00	1,196,227.00	115,883,000.00	241,744,129.00
2. Additional Debt Incurred During Year					1,339,567.00	204,494.00	13,408,000.00	14,952,061.00
3. Retirements and Repayments		2,506,540.00			1,183,520.00	228,053.00	15,696,000.00	19,614,113.00
4. Debt at End of Fiscal Year		112,847,430.00			9,466,979.00	1,172,668.00	113,595,000.00	237,082,077.00
5. Accreted Interest at End Of Fiscal Year		21,355,684.00						21,355,684.00
6. Total Debt and Accreted Interest		134,203,114.00			9,466,979.00	1,172,668.00	113,595,000.00	258,437,761.00
7. Current Portion P&I - Due within 1 year		10,989,019.57						10,989,019.57
8. Interest Paid during current fiscal year		7,019,469.82						7,019,469.82

(PRINCIPAL AMOUNTS ONLY)							
<u>PROPRIETARY FUNDS</u>							
1. Debt at Beginning of Fiscal Year							
2. Additional Debt Incurred During Year							
3. Retirements and Repayments							
4. Debt at End of Fiscal Year							
5. Accreted Interest at End Of Fiscal Year							
6. Total Debt and Accreted Interest							
7. Current Portion P&I - Due within 1 year							
8. Interest Paid during current fiscal year							



LEA : 101631703     Canon-McMillan SD

Printed 5/7/2020 4:28:58 PM

Total Principal and Interest Payments Made by Your School - All Funds

Function	Fund		Principal (910)	Principal (920)	Interest (830)	Total (Principal +Interest)	Misc Other Uses (990)
5110	10	General Fund	2,506,540.00		7,019,469.82	9,526,009.82	
5110	20	Special Revenue Funds					
5110	30	Capital Projects Funds					
5110	40	Debt Service Fund					
5110	90	Permanent Fund					
5120	10	General Fund					
5120	20	Special Revenue Funds					
5120	30	Capital Projects Funds					
5120	40	Debt Service Fund					
Total Debt Payments - Governmental Funds			\$2,506,540.00		\$7,019,469.82	\$9,526,009.82	

Function	Fund		Principal (910)	Principal (920)	Interest (830)	Total (Principal +Interest)
5110	50	Enterprise Fund				
5110	60	Internal Service Fund				
5120	50	Enterprise Fund				
5120	60	Internal Service Fund				
Total Debt Payments - Proprietary Funds						

LEA : 101631703     Canon-McMillan SD

Printed 5/7/2020 4:28:58 PM

**Debt Details**  
**Governmental Funds/ Activities**

Debt Category	Debt Issue Date (MM/YYYY)	Principal Amounts Only				Current Portion Due Within One Year (Principal and Interest)	Interest Paid During Fiscal Year
		Debt at Beginning of Fiscal Year	Additions	Reductions / Repayments	Debt at End of Fiscal Year		
General Obligation Bonds/Notes – CIB	10/2018	25,275,000.00		45,000.00	25,230,000.00	1,198,150.00	1,159,000.00
General Obligation Bonds/Notes – CIB	01/2017	24,065,000.00		110,000.00	23,955,000.00	1,142,050.00	1,031,550.00
General Obligation Bonds/Notes – CIB	01/2014	8,605,000.00		465,000.00	8,140,000.00	813,950.00	346,150.00
General Obligation Bonds/Notes – CIB	01/2014	23,780,000.00			23,780,000.00	1,067,000.00	1,067,000.00
General Obligation Bonds/Notes – CIB	12/2012	18,710,000.00		15,000.00	18,695,000.00	598,556.26	583,856.26
General Obligation Bonds/Notes – CIB	12/2012	1,285,000.00		370,000.00	915,000.00	402,001.06	31,616.06
General Obligation Bonds/Notes – CIB	03/2008	1,410,000.00		110,000.00	1,300,000.00	1,627,312.25	51,837.50
General Obligation Bonds/Notes – CAB	04/2002	3,576,916.00		227,630.00	3,349,286.00	570,000.00	342,370.00
General Obligation Bonds/Notes – CAB	01/2001	2,913,779.00		14,365.00	2,899,414.00	40,000.00	25,635.00
General Obligation Bonds/Notes – CAB	12/1999	5,733,275.00		1,149,545.00	4,583,730.00	3,530,000.00	2,380,455.00
Compensated Absences		1,196,227.00	204,494.00	228,053.00	1,172,668.00		
Other Post-Employment Benefits (OPEB)		9,310,932.00	1,339,567.00	1,183,520.00	9,466,979.00		
Net Pension Liability		115,883,000.00	13,408,000.00	15,696,000.00	113,595,000.00		
Totals for Debt Entered:		\$241,744,129.00	\$14,952,061.00	\$19,614,113.00	\$237,082,077.00	\$10,989,019.57	\$7,019,469.82

LEA : 101631703     Canon-McMillan SD

Printed 5/7/2020 4:28:58 PM

**Accreted Interest Detail**  
**Governmental Funds/ Activities**

Debt Category	Debt Issue Date (MM/YYYY)	Beginning Accreted Interest	Additions	Reductions	Ending Accreted Interest	Ending bond Principal	Ending Principal Plus Accreted Interest
General Obligation Bonds/Notes – CAB	04/2002	5,455,842.00	518,444.00	342,370.00	5,631,916.00	3,349,286.00	8,981,202.00
General Obligation Bonds/Notes – CAB	01/2001	5,160,051.00	485,502.00	25,635.00	5,619,918.00	2,899,414.00	8,519,332.00
General Obligation Bonds/Notes – CAB	12/1999	11,529,106.00	955,199.00	2,380,455.00	10,103,850.00	4,583,730.00	14,687,580.00
<b>Totals for Debt Entered:</b>		<b>\$22,144,999.00</b>	<b>\$1,959,145.00</b>	<b>\$2,748,460.00</b>	<b>\$21,355,684.00</b>	<b>\$10,832,430.00</b>	<b>\$32,188,114.00</b>

LEA : 101631703     Canon-McMillan SD

General Fund (10)

Section 1: Tuition/Purchased Services as Reported within Expenditure Detail	Amount
Tuition Reported in General Fund Expenditures 1000-560	4,559,341.69
Purchased Services in General Fund Expenditures 1000-594 and 1000-597	1,062.12
Section 1 Total	\$4,560,403.81

Section 2: Tuition Paid to Institution Types During Fiscal Year	Tuition Paid For Nonspecial Education	Tuition Paid For Special Education	Total
1 1306 Institutions	1,062.12		1,062.12
2 Institutionalized Children's Programs			
3 Juveniles Incarcerated in Adult Facilities			
4 Residential Treatment Facilities			
5 Other Local Education Agencies	49,377.37		49,377.37
6 Brick and Mortar Charter Schools	1,210,193.39		1,210,193.39
7 Cyber Charter Schools		639,483.73	639,483.73
8 Career and Technology Centers	774,115.86		774,115.86
9 Approved Private Schools		469,214.76	469,214.76
10 PA Chartered Schools for the Deaf and Blind			
11 Private Residential Rehabilitative Institutions	19,919.54	1,362,527.40	1,382,446.94
12 Juvenile Detention Centers	34,509.64		34,509.64
13 Special Program Jointures			
14 Other Tuition Not Included Elsewhere In This Section			
Section 2 Total	\$2,089,177.92	\$2,471,225.89	\$4,560,403.81

1 .	<u>Student Transportation Services for Educational Field Trips</u>	50,949.28
2 .	<u>Student Transportation Services for Student Activities</u>	106,173.93
3 .	<u>Rental of Vehicles for Student Transportation Services</u>	
4 .	<u>Capital Reserve Funds</u>	

Include only district-owned transportation expenditures paid from State or local money.  
DO NOT include federal expenditures or payments to contract service providers.  
Contracted transportation services should not be recorded on this schedule.

LEA : 101631703     Canon-McMillan SD

Printed 5/7/2020 4:29:05 PM

Food Service / Cafeteria Operations Fund (51)

3000 Operation of Non-Instructional Services

Total

100	<u>Personnel Services – Salaries</u>	
100	Personnel Services – Salaries	649,163.00
Total Personnel Services – Salaries		\$649,163.00
200	<u>Personnel Services – Employee Benefits</u>	
210	Group Insurance – Contracted Provider	216,351.60
220	Social Security Contributions	46,468.46
230	PSERS Retirement Contributions	206,458.91
250	Unemployment Compensation	10.84
260	Workers' Compensation	5,477.08
Total Personnel Services – Employee Benefits		\$474,766.89
500	<u>Other Purchased Services</u>	
530	Communications	3,527.55
570	Food Service Management	1,061,277.09
580	Travel	1,816.24
Total Other Purchased Services		\$1,066,620.88
600	<u>Supplies</u>	
610	General Supplies	13,093.29
630	Food	147,989.43
Total Supplies		\$161,082.72
700	<u>Property</u>	
740	Depreciation	46,799.00
Total Property		\$46,799.00
Total 3000 Operation of Non-Instructional Services		\$2,398,432.49

LEA : 101631703     Canon-McMillan SD

Printed 5/7/2020 4:29:05 PM

Food Service / Cafeteria Operations Fund (51)

3100 Food Services	<u>Elementary</u>	<u>Secondary</u>	<u>Federal</u>	<u>Total</u>
<b>100 <u>Personnel Services – Salaries</u></b>				
100 Personnel Services – Salaries				649,163.00
<b>Total Personnel Services – Salaries</b>				<b>\$649,163.00</b>
<b>200 <u>Personnel Services – Employee Benefits</u></b>				
210 Group Insurance – Contracted Provider				216,351.60
220 Social Security Contributions				46,468.46
230 PSERS Retirement Contributions				206,458.91
250 Unemployment Compensation				10.84
260 Workers' Compensation				5,477.08
<b>Total Personnel Services – Employee Benefits</b>				<b>\$474,766.89</b>
<b>500 <u>Other Purchased Services</u></b>				
530 Communications				3,527.55
570 Food Service Management				1,061,277.09
580 Travel				1,816.24
<b>Total Other Purchased Services</b>				<b>\$1,066,620.88</b>
<b>600 <u>Supplies</u></b>				
610 General Supplies				13,093.29
630 Food				147,989.43
<b>Total Supplies</b>				<b>\$161,082.72</b>
<b>700 <u>Property</u></b>				
740 Depreciation				46,799.00
<b>Total Property</b>				<b>\$46,799.00</b>
<b>Total 3100 Food Services</b>				<b>\$2,398,432.49</b>

	<u>Food Service(51)</u>	<u>Child Care Operations(52)</u>	<u>Other Enterprise(58)</u>	<u>Internal Service(60)</u>	<u>Total</u>
<b>3000 <u>Operation of Non-Instructional Services</u></b>					
3100 Food Services	2,398,432.49				2,398,432.49
<b>Total Operation of Non-Instructional Services</b>	<b>\$2,398,432.49</b>				<b>\$2,398,432.49</b>
<b>TOTAL ACTUAL EXPENDITURES &amp; OTHER FINANCING USES</b>	<b>\$2,398,432.49</b>				<b>\$2,398,432.49</b>



LEA : 101631703 Canon-McMillan SD

Printed 5/7/2020 4:29:15 PM

Fund	School	School Number	Local Personnel	Local Nonpersonnel	State Personnel	State Nonpersonnel	Federal Personnel	Federal Nonpersonnel	Total	Explanation
10										
	Borland Manor El Sch	4211	2,499,620.35	409,466.37	1,024,943.03	167,897.38	64,560.73	4,238.24	4,170,726.10	
	Canon-McMillan SHS	4217	11,573,213.99	2,353,646.98	4,745,474.66	965,088.19	7,556.63	9,595.22	19,654,575.67	
	Canonsburg MS	7217	5,840,869.86	1,044,772.43	2,394,987.25	428,397.95	3,851.64	4,890.71	9,717,769.84	
	Cecil Intrmd Sch	7216	3,217,270.25	561,458.57	1,319,207.82	230,220.18	85,645.67	5,622.40	5,419,424.89	
	Hills-Hendersonville El Sch	4938	1,577,028.72	324,962.09	646,644.04	133,247.29	50,113.82	3,289.84	2,735,285.80	
	Muse El Sch	8397	5,318,472.32	1,087,202.40	2,180,783.63	445,795.91	153,943.99	10,106.00	9,196,304.25	
	North Strabane Intrmd Sch	7764	3,155,633.21	619,912.74	1,293,934.20	254,188.70	90,696.24	5,953.96	5,420,319.05	
	South Central El	4937	3,091,951.28	603,091.54	1,267,822.10	247,291.34	91,808.29	6,026.96	5,307,991.51	
	Wylandville El Sch	4214	1,700,023.53	363,135.48	697,076.77	148,899.89	54,643.89	3,587.22	2,967,366.78	
Total			37,974,083.51	7,367,648.60	15,570,873.50	3,021,026.83	602,820.90	53,310.55	64,589,763.89	