

LEA Name : Canon-McMillan SD
Address : 1 N Jefferson Ave
Canonsburg , PA 15317

County : Washington
AUN Number : 101631703
LEA Type : SD

Annual Financial Report

Accuracy Certification Statement

For Fiscal Year Ending

6/30/2016

Pennsylvania Department of Education


&

Office of Comptroller Operations

PDE-2056: Intermediate Unit

PDE-2057: School District, AVTS/CTC, Charter School,
and Special Program Jointure

CERTIFICATION: By signing this page I agree that the electronic data submitted is a complete and accurate statement of the financial operations and status of the local education agency for the fiscal year. It has been prepared in accordance with generally accepted accounting principles and established Commonwealth of PA reporting guidelines.


Chief School Administrator Signature

10/28/16
Date


Board/Secretary Signature

10/28/16
Date

Joni B Mansmann

Contact Person

mansmannj@cmsd.k12.pa.us

Contact Person E-mail Address

(724)746-2940

Ext :9109

Contact Person Telephone Number

(724)746-9184

Contact Person Fax Number

Audit Certification
Annual Financial Report:
For Fiscal Year Ending **6/30/2016**
(Pursuant to PA School Code Section 218(b))

LEA Name : Canon-McMillan SD
AUN Number : 101631703
County : Washington

Audit Certification Due: 12/31/2016

This certification is applicable to:

☒ Orig. Annual Financial Report submitted to
Comptroller Operations: 10/28/16
Date

☐ Annual Financial Report revisions submitted on: _____
Date

Auditing Firm:

Auditor Contact Name:

Auditor Phone:

Auditor E-mail:

CERTIFICATION: By signing this page I agree that the financial statements of the school have been properly audited as noted above pursuant to Article XXIV, and in the auditor's professional opinion, the Annual Financial Report (PDE-2057) submitted on the date referenced is materially consistent with the audited financial statements.

Chief School Administrator

Michael J. Dunn 10/28/16
Signature Date

Board Secretary

Joni B. Mansmann 10/28/16
Signature Date

Joni B Mansmann

Contact Person

mansmannj@cmsd.k12.pa.us

Contact Person E-mail Address

(724)746-2940

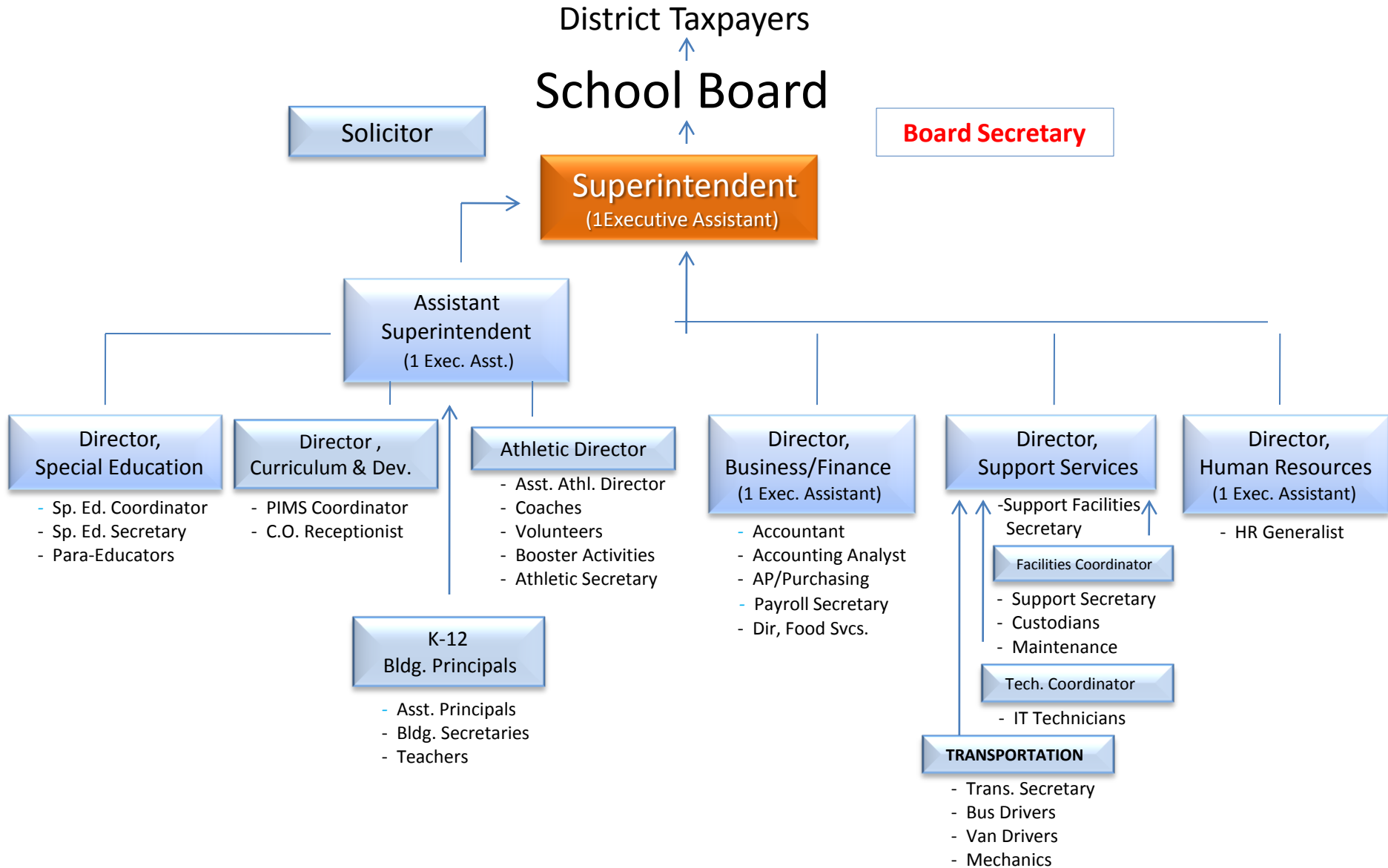
Ext :9109

Contact Person Telephone Number

(724)746-9184

Contact Person Fax Number

CMSD Admin Org Chart



Val Number	Description	Justification
30501	Revenue Detail: AFR amount must equal or exceed PDE FAI System amount. 7311, AFR Rev Detail: 1148980.11 7311, PDE FAI System: \$1,162,454.05	Transportation subsidy for 2013-2014 in the amount of \$13,476.16 was received January 2016. It was included in the 2014-2015 AFR in our transportation subsidy payments. See FAI reference : VT1622015041.
41590	Expenditure Detail, Salaries (Object 100) and Benefits (Object 200 series): Amounts must be entered for both Salaries and Benefits. Function 2390, Object 100: \$0.00 Function 2390, Object 200: \$269,465.03	We recorded benefits granted to our retirees. These benefits do not have salary associated with them as it was a post retirement benefit.
50160	SOIN: All Governmental Fund General Obligation Bonds must include an amount for Interest Paid during Fiscal Year. Correct data or enter a justification.	GBO's 1999, 2001 & 2002, no interest to be paid during the current fiscal year due to the structuring of the debt.
50180	SOIN: All Governmental Fund General Obligation Bonds must include an amount for Amount Due Within One Year (Principal and Interest). Correct data or enter a justification.	Due to the structure and payment schedule. There is no current portion due within the year.
50410	SESS - 2140 Psychological Services: SESS Schedule amounts for Special Education vary from prior year by 40% or more. Correct the data or enter a justification. SESS Schedule 2140: \$333,145.82 Prior Year SESS Schedule 2140: \$80.00	Sp. Education has experienced a rise in the necessity for Psychological Services which resulted in the variance. Additionally these services were previously included in our Intermediate Unit cost, the district now contracts separately for these services.
50460	SESS - 2420 Medical Services: SESS Schedule amounts for Special Education vary from prior year by 40% or more. Correct the data or enter a justification. SESS Schedule 2420: \$936,471.73 Prior Year SESS Schedule 2420: \$241,547.79	Sp. Education has experienced a rise in the necessity for OT/PT Services which resulted in the variance. Additionally, these services were previously included in our Intermediate Unit cost, the district now contracts separately for these services.

LEA : 101631703 Canon-McMillan SD

Printed 10/28/2016 9:28:38 AM

Amounts Expressed in Whole Dollars		<u>General Fund</u> <u>(10)</u>	<u>Public Purpose Trust</u> <u>(27)</u>	<u>Other Compt Approved</u> <u>(28)</u>	<u>Athletic / Activity</u> <u>(29)</u>	<u>Capital Reserve (690.</u> <u>1850)</u> <u>(31)</u>
Assets And Deferred Outflows Of Resources						
Assets						
0100	Cash and Cash Equivalents	11,879,933			37,865	
0110	Investments	579,131				
0120	Taxes Receivable	1,564,120				
0130	Due From Other Funds	598,859				
0141	Due From Other Governments					
0142	State Revenue Receivable	2,068,986				
0143	Federal Revenue Receivable	53,671				
0145	Other Intergovernmental Revenue Receivable	99,556				
0146	Due from Primary Government					
0147	Due from Component Unit					
0150	Other Receivables	173,852				
0170	Inventories	94,674				
0180	Prepaid Expenses (Expenditures)	15,183				
0190	Other Current Assets					
Total Assets		\$17,127,965			\$37,865	
0910	Deferred Outflows of Resources					
Total Assets And Deferred Outflows Of Resources		\$17,127,965			\$37,865	

LEA : 101631703 Canon-McMillan SD

Printed 10/28/2016 9:28:38 AM

Amounts Expressed in Whole Dollars	<u>Capital Reserve (1431)</u> <u>(32)</u>	<u>Other Capital Projects</u> <u>Fund</u> <u>(39)</u>	<u>Debt Service</u> <u>(40)</u>	<u>Permanent</u> <u>(90)</u>	<u>Total Governmental</u> <u>Funds</u>
Assets And Deferred Outflows Of Resources					
Assets					
0100 Cash and Cash Equivalents	7,654,097	15,643,211	1,254,624		36,469,730
0110 Investments	503,099	2,492,479	3,229,887		6,804,596
0120 Taxes Receivable					1,564,120
0130 Due From Other Funds	278,753	4,277	40,000		921,889
0141 Due From Other Governments					
0142 State Revenue Receivable					2,068,986
0143 Federal Revenue Receivable					53,671
0145 Other Intergovernmental Revenue Receivable					99,556
0146 Due from Primary Government					
0147 Due from Component Unit					
0150 Other Receivables					173,852
0170 Inventories					94,674
0180 Prepaid Expenses (Expenditures)					15,183
0190 Other Current Assets					
Total Assets	\$8,435,949	\$18,139,967	\$4,524,511		\$48,266,257
0910 Deferred Outflows of Resources					
Total Assets And Deferred Outflows Of Resources	\$8,435,949	\$18,139,967	\$4,524,511		\$48,266,257

LEA : 101631703 Canon-McMillan SD

Printed 10/28/2016 9:28:38 AM

Amounts Expressed in Whole Dollars	<u>General Fund</u> <u>(10)</u>	<u>Public Purpose Trust</u> <u>(27)</u>	<u>Other Compt Approved</u> <u>(28)</u>	<u>Athletic / Activity</u> <u>(29)</u>	<u>Capital Reserve (690.</u> <u>1850)</u> <u>(31)</u>
Liabilities And Deferred Inflows Of Resources And Fund Balances					
Liabilities					
0400 Due to Other Funds	323,030			5,925	
0411 Due to Other Governments					
0412 Due to Primary Government					
0413 Due to Component Unit					
0420 Accounts Payable	1,434,479				
0430 Contracts Payable					
0440 Current Portion of Long-Term Debt					
0450 Short-Term Payables					
0461 Accrued Salaries and Benefits	6,974,855				
0462 Payroll Deductions and Withholding					
0480 Unearned Revenues	46,243				
0490 Other Current Liabilities	47,233				
Total Liabilities	\$8,825,840			\$5,925	
0950 Deferred Inflows of Resources					
Fund Balances					
0810 Nonspendable Fund Balance	109,854				
0820 Restricted Fund Balance					
0830 Committed Fund Balance	1,500,000			31,940	
0840 Assigned Fund Balance	3,380,711				
0850 Unassigned Fund Balance	3,311,560				
Total Fund Balances	\$8,302,125			\$31,940	
Total Liabilities, Deferred Inflows Of Resources And Fund Balances	\$17,127,965			\$37,865	

LEA : 101631703 Canon-McMillan SD

Printed 10/28/2016 9:28:38 AM

Amounts Expressed in Whole Dollars	<u>Capital Reserve (1431)</u> <u>(32)</u>	<u>Other Capital Projects</u> <u>Fund</u> <u>(39)</u>	<u>Debt Service</u> <u>(40)</u>	<u>Permanent</u> <u>(90)</u>	<u>Total Governmental</u> <u>Funds</u>
Liabilities And Deferred Inflows Of Resources And Fund Balances					
Liabilities					
0400 Due to Other Funds			17,400		346,355
0411 Due to Other Governments					
0412 Due to Primary Government					
0413 Due to Component Unit					
0420 Accounts Payable		86,108			1,520,587
0430 Contracts Payable					
0440 Current Portion of Long-Term Debt					
0450 Short-Term Payables					
0461 Accrued Salaries and Benefits					6,974,855
0462 Payroll Deductions and Withholding					
0480 Unearned Revenues					46,243
0490 Other Current Liabilities					47,233
Total Liabilities		\$86,108	\$17,400		\$8,935,273
0950 Deferred Inflows of Resources					
Fund Balances					
0810 Nonspendable Fund Balance					109,854
0820 Restricted Fund Balance					
0830 Committed Fund Balance	8,435,949	18,053,859	4,507,111		32,528,859
0840 Assigned Fund Balance					3,380,711
0850 Unassigned Fund Balance					3,311,560
Total Fund Balances	\$8,435,949	\$18,053,859	\$4,507,111		\$39,330,984
Total Liabilities, Deferred Inflows Of Resources And Fund Balances	\$8,435,949	\$18,139,967	\$4,524,511		\$48,266,257

LEA : 101631703 Canon-McMillan SD

Printed 10/28/2016 9:28:41 AM

Amounts Expressed in Whole Dollars	General Fund (10)	Public Purpose Trust (27)	Other Compt Approved (28)	Athletic / Activity (29)	Capital Reserve (690. 1850) (31)
Revenues					
6000 Revenue from Local Sources	53,328,006			114,563	
7000 Revenue from State Sources	21,117,523				
8000 Revenue from Federal Sources	683,074				
Total Revenues	\$75,128,603			\$114,563	
Expenditures					
1000 Instruction	37,129,610				
2000 Support Services	23,844,079				
3000 Operation of Non-Instructional Services	1,653,996			110,219	
4000 Facilities Acquisition, Construction and Improvement Services	1,038,522				
5110 Debt Service	7,782,245				
5130 Refund of Prior Year Revenues / Receipts	583,410				
5140 Short-Term Borrowing – Interest and Costs					
Total Expenditures	\$72,031,862			\$110,219	
Excess (Deficiency) Of Revenues Over Expenditures	\$3,096,741			\$4,344	
Other Financing Sources (Uses)					
9110 Face Value of Bonds Issued					
9120 Proceeds from Refunding of Bonds					
9130 Bond Premiums					
9200 Proceeds from Extended-Term Financing					
9300 Interfund Transfers - IN	5,905				
9400 Sale of or Compensation for Loss of Fixed Assets	18,109				
9710 Transfers from Component Units					
9720 Transfers from Primary Governments					
9910 Other Financing Sources Not Listed in the 9000 Series					
9990 Insurance Recoveries					
5120 Debt Service – Refunded Bonds					
5150 Bond Discounts					
5200 Interfund Transfers – Out	323,628			5,905	
5300 Transfers Out to Component Units/Primary Governments					
Total Other Financing Sources (Uses)	(\$299,614)			(\$5,905)	

LEA : 101631703 Canon-McMillan SD

Printed 10/28/2016 9:28:41 AM

Amounts Expressed in Whole Dollars	Capital Reserve (1431) (32)	Other Capital Projects Fund (39)	Debt Service (40)	Permanent (90)	Total Governmental Funds
Revenues					
6000 Revenue from Local Sources	12,201	100,199	15,688		53,570,657
7000 Revenue from State Sources					21,117,523
8000 Revenue from Federal Sources					683,074
Total Revenues	\$12,201	\$100,199	\$15,688		\$75,371,254
Expenditures					
1000 Instruction					37,129,610
2000 Support Services					23,844,079
3000 Operation of Non-Instructional Services					1,764,215
4000 Facilities Acquisition, Construction and Improvement Services	112,838	7,151,589			8,302,949
5110 Debt Service					7,782,245
5130 Refund of Prior Year Revenues / Receipts					583,410
5140 Short-Term Borrowing – Interest and Costs					
Total Expenditures	\$112,838	\$7,151,589			\$79,406,508
Excess (Deficiency) Of Revenues Over Expenditures	(\$100,637)	(\$7,051,390)	\$15,688		(\$4,035,254)
Other Financing Sources (Uses)					
9110 Face Value of Bonds Issued					
9120 Proceeds from Refunding of Bonds					
9130 Bond Premiums					
9200 Proceeds from Extended-Term Financing					
9300 Interfund Transfers - IN	275,000				280,905
9400 Sale of or Compensation for Loss of Fixed Assets					18,109
9710 Transfers from Component Units					
9720 Transfers from Primary Governments					
9910 Other Financing Sources Not Listed in the 9000 Series					
9990 Insurance Recoveries					
5120 Debt Service – Refunded Bonds					
5150 Bond Discounts					
5200 Interfund Transfers – Out		222,387			551,920
5300 Transfers Out to Component Units/Primary Governments					
Total Other Financing Sources (Uses)	\$275,000	(\$222,387)			(\$252,906)

Amounts Expressed in Whole Dollars		<u>General Fund</u> <u>(10)</u>	<u>Public Purpose Trust</u> <u>(27)</u>	<u>Other Compt Approved</u> <u>(28)</u>	<u>Athletic / Activity</u> <u>(29)</u>	<u>Capital Reserve</u> <u>(690.</u> <u>1850)</u> <u>(31)</u>
Special And Extraordinary Items						
9920	Special Items – Gains					
9930	Extraordinary Items – Gains					
5520	Special Items – Losses					
5530	Extraordinary Items – Losses					
Net Change In Fund Balances		\$2,797,127			(\$1,561)	
Fund Balance						
0001	Fund Balance - Beginning of Fiscal Year	5,504,998			33,501	
Fund Balance - End Of Year		\$8,302,125			\$31,940	

Amounts Expressed in Whole Dollars	<u>Capital Reserve (1431)</u> <u>(32)</u>	<u>Other Capital Projects</u> <u>Fund</u> <u>(39)</u>	<u>Debt Service</u> <u>(40)</u>	<u>Permanent</u> <u>(90)</u>	<u>Total Governmental</u> <u>Funds</u>
Special And Extraordinary Items					
9920 Special Items – Gains					
9930 Extraordinary Items – Gains					
5520 Special Items – Losses					
5530 Extraordinary Items – Losses					
Net Change In Fund Balances	\$174,363	(\$7,273,777)	\$15,688		(\$4,288,160)
Fund Balance					
0001 Fund Balance - Beginning of Fiscal Year	8,261,586	25,327,636	4,491,423		43,619,144
Fund Balance - End Of Year	\$8,435,949	\$18,053,859	\$4,507,111		\$39,330,984

LEA : 101631703 Canon-McMillan SD

Printed 10/28/2016 9:28:42 AM

Amounts Expressed in Whole Dollars	Food Service (51)	Child Care Operations (52)	Other Enterprise (58)	TOTAL	Internal Service (60)
Assets And Deferred Outflows Of Resources					
Current Assets					
0100 Cash and Cash Equivalents	564,154			564,154	
0110 Investments	467,546			467,546	5,255,408
0130 Due From Other Funds	94,334			94,334	
0141 Due From Other Governments					
0142 State Revenue Receivable					
0143 Federal Revenue Receivable					
0146 Due from Primary Government					
0147 Due from Component Unit					
0150 Other Receivables	116,462			116,462	
0170 Inventories	11,885			11,885	
0180 Prepaid Expenses (Expenditures)					
0190 Other Current Assets					
Total Current Assets	\$1,254,381			\$1,254,381	\$5,255,408
Noncurrent Assets					
0211 Land					
0212 Site Improvements (Net)					
0220 Buildings and Building Improvements (Net)					
0230 Machinery, Equipment and Furniture (Net)	324,870			324,870	
0250 Construction in Progress					
0260 Long Term Prepayments					
0290 Other Noncurrent Assets					
Total Noncurrent Assets	\$324,870			\$324,870	
0910 Deferred Outflows of Resources					
Total Assets And Deferred Outflows Of Resources	\$1,579,251			\$1,579,251	\$5,255,408

LEA : 101631703 Canon-McMillan SD

Printed 10/28/2016 9:28:42 AM

Amounts Expressed in Whole Dollars	Food Service (51)	Child Care Operations (52)	Other Enterprise (58)	TOTAL	Internal Service (60)
Liabilities And Deferred Inflows Of Resources And Net Position					
Current Liabilities					
0400 Due to Other Funds	575,533			575,533	
0411 Due to Other Governments					
0413 Due to Component Unit					
0420 Accounts Payable	1,150			1,150	
0430 Contracts Payable					
0440 Current Portion of Long-Term Debt					
0450 Short-Term Payables					
0461 Accrued Salaries and Benefits					
0462 Payroll Deductions and Withholding					
0480 Unearned Revenues					
0490 Other Current Liabilities	49,084			49,084	
Total Current Liabilities	\$625,767			\$625,767	
Noncurrent Liabilities					
0510 Bonds Payable					
0520 Extended-Term Financing Agreements Payable					
0530 Lease-Purchase Obligations					
0540 Accumulated Compensated Absences					
0550 Authority Lease Obligations					
0560 Other Post-Employment Benefits (OPEB)					
0570 Net Pension Liability					
0599 Other Long-Term Liabilities					
Total Noncurrent Liabilities					
Total Liabilities	\$625,767			\$625,767	
0950 Deferred Inflows of Resources	11,885			11,885	
Net Position					
0791 Invested in Capital Assets, Net of Related Debt	324,870			324,870	
0008 Restricted Net Position (0792 – 0798)					5,255,408
0799 Unrestricted Net Position	616,729			616,729	
Total Net Position	\$941,599			\$941,599	\$5,255,408
Total Liabilities And Deferred Inflows Of Resources And Net Position	\$1,579,251			\$1,579,251	\$5,255,408

Amounts Expressed in Whole Dollars	Food Service (51)	Child Care Operations (52)	Other Enterprise (58)	TOTAL	Internal Service (60)
Operating Revenues					
6600 Food Service Revenue	1,395,555			1,395,555	
0071 Charges for Services					
0072 Other Operating Revenue	313			313	
Total Operating Revenues	\$1,395,868			\$1,395,868	
Operating Expenses					
100 Personnel Services – Salaries	671,251			671,251	
200 Personnel Services – Employee Benefits	439,649			439,649	
300 Purchased Professional and Technical Services	4,982			4,982	
400 Purchased Property Services					
500 Other Purchased Services	1,133,685			1,133,685	
600 Supplies	143,105			143,105	
740 Depreciation	9,644			9,644	
810 Dues and Fees					
890 Miscellaneous Expenditures					
Total Operating Expenses	\$2,402,316			\$2,402,316	
Operating Income (Loss)	(\$1,006,448)			(\$1,006,448)	
Non Operating Revenues (Expenses)					
6500 Earnings on Investments					
6920 Contributions and Donations from Private Sources					
6930 Gains or Losses on Sale of Fixed Assets					
6991 Refunds of a Prior Year Expenditure					
7000 Revenue from State Sources	169,192			169,192	
8000 Revenue from Federal Sources	715,213			715,213	
820 Claims and Judgments Against the LEA					
830 Interest	(631)			(631)	(9,825)
TOTAL Non Operating Revenues (Expenses)	\$885,036			\$885,036	\$9,825
Income (Loss) Before Contributions And Transfers	(\$121,412)			(\$121,412)	\$9,825

Amounts Expressed in Whole Dollars	<u>Food Service</u> <u>(51)</u>	<u>Child Care Operations</u> <u>(52)</u>	<u>Other Enterprise</u> <u>(58)</u>	<u>TOTAL</u>	<u>Internal Service</u> <u>(60)</u>
Contributions, Transfers, and Special and Extraordinary Items					
5200 Interfund Transfers – Out					
5300 Transfers Out to Component Units/Primary Governments					
5520 Special Items – Losses					
5530 Extraordinary Items – Losses					
9300 Interfund Transfers - IN	271,015			271,015	
9500 Capital Contributions					
9700 Transfers IN From Component Units/Primary Governments					
9920 Special Items – Gains					
9930 Extraordinary Items – Gains					
Change In Net Position	\$149,603			\$149,603	\$9,825
0002 Net Position - Beginning of Fiscal Year	791,996			791,996	5,245,583
0003 Accounting Changes / Residual Equity Transfers					
Net Position - End Of Year	\$941,599			\$941,599	\$5,255,408

LEA : 101631703 Canon-McMillan SD

Printed 10/28/2016 9:28:46 AM

Amounts Expressed in Whole Dollars	<u>Food Service</u> <u>(51)</u>	<u>Child Care Operations</u> <u>(52)</u>	<u>Other Enterprise</u> <u>(58)</u>	<u>TOTAL</u>	<u>Internal Service(60)</u>
Cash Flows From Operating Activities					
0011 Cash Receipts From Users	1,360,221			1,360,221	
0012 Cash Receipts From Assessments Made to Other Funds					
0013 Cash Receipts From Earnings on Investments					
0014 Cash Receipts From Other Operating Revenue					
0015 Cash Payments To Employees For Services	1,087,134			1,087,134	
0016 Cash Payments For Insurance Claims					
0017 Cash Payments To Suppliers For Goods and Services	1,172,776			1,172,776	
0018 Cash Payments For Other Operating Expenses					
Net Cash Provided By (Used For) Operating Activities	(\$899,689)			(\$899,689)	
Cash Flows From Non-Capital Financing Activities					
0021 Receipts From Local Sources - 6000					
0022 Receipts From State Sources - 7000	169,206			169,206	
0023 Receipts From Federal Sources -8000	595,788			595,788	
0024 Notes and Loans Received (Repaid)					
0025 Interest Paid on Notes/Loans - 5100-830					
0026 Operating Transfers In (Out)/Residual Equity Trans					
0027 Operating Transfers In (Out) Primary Government / Comp Unit					
0028 Receipts From Refund of Prior Year Expenditures - 6991					
0029 Special and Extraordinary Gains (losses)					
Net Cash Prov By (Used for) Non-Capital Financing Activities	\$764,994			\$764,994	
Cash Flows From Capital and Related Financing Activities					
0031 Payments For Fac Acq, Const, and Imp - 4000	(5,200)			(5,200)	
0032 Gain / (Loss) on Sale of Fixed Assets - 6930					
0033 Proceeds From Extended Term Financing - 9200					
0034 Principal Paid on Financing Agreements					
0035 Interest Paid on Financing Agreements - 5100-830					
0036 (Inc) Dec in Contributed Capital					
Net Cash Prov By (Used for) Capital and Related Financing Activities	(\$5,200)			(\$5,200)	
Cash Flows From Investing Activities					
0041 Earnings on Investments - 6500	631			631	
0042 Purchase of Inv Securities / Deposits to Inv Pools	195,195			195,195	
0043 Receipts From Investment Pool Withdrawals					
0044 Proceeds from Sale and Maturity of Inv Securities					
0045 Loans Received (Paid)					
Net Cash Prov By (Used for) Investing Activities	\$195,826			\$195,826	

LEA : 101631703 Canon-McMillan SD

Printed 10/28/2016 9:28:46 AM

	Food Service (51)	Child Care Operations (52)	Other Enterprise (58)	TOTAL	Internal Service (60)
Net Increase (Decrease) in Cash Flows	55,931			55,931	
0004 Cash and Cash Equivalents Beginning of Year	508,223			508,223	
Cash and Cash Equivalents at Year End	\$564,154			\$564,154	
Reconciliation of Operating Income (Loss) To Net Cash Provided by (Used For) Operating Activities					
0005 Operating Income (Loss) per REP	(1,006,448)			(1,006,448)	
Adjustments					
0051 Depreciation and Net Amortization	9,644			9,644	
0052 Provision for Uncollectible Accounts	121,280			121,280	
0053 Other Adjustments					
Effect of Changes in Assets, Liabilities, Deferred Outflows and Deferred Inflows					
0054 (Inc) Dec In Accounts Receivable (0120-0150)	(35,647)			(35,647)	
0055 Advances to Other Funds (0160)	23,766			23,766	
0056 (Inc) Dec in Inventories (0170)	12,867			12,867	
0057 (Inc) Dec in Prepaid Expenses (0180)					
0058 (Inc) Dec in Other Current or Noncurrent Assets					
0064 Deferred Outflows (0910)					
0059 Inc (Dec) in Accounts Payable (0400-0450)	(15,539)			(15,539)	
0060 Inc (Dec) in Accrued Salaries/Benefits (0461)					
0065 Inc (Dec) in Net Pension Liabilities (0570)					
0066 Inc (Dec) in Other Postemp Benefit Oblig (0560)					
0061 Inc (Dec) in Payroll Deductions/Withholding (0462)					
0062 Inc (Dec) in Unearned Revenue (0480)	(12,867)			(12,867)	
0063 Inc (Dec) in Other Current or Noncurrent Liabilities	3,255			3,255	
0067 Deferred Inflows (0950)					
Total Adjustments	\$106,759			\$106,759	
Cash Provided By (Used for) Total	(\$899,689)			(\$899,689)	

COMBINED STATEMENT OF CASH FLOWS
SCHEDULE OF NONCASH INVESTING, CAPITAL, AND FINANCING ACTIVITIES

Explanation of Transaction and Balance Sheet Effect	Amount
Total	

LEA : 101631703 Canon-McMillan SD

Printed 10/28/2016 9:28:47 AM

Amounts Expressed in Whole Dollars	<u>Private Purpose Trust</u> <u>(71)</u>	<u>Investment Trust</u> <u>(72)</u>	<u>Pension Trust</u> <u>(73)</u>	<u>Activity</u> <u>(81)</u>
Assets And Deferred Outflows Of Resources				
Assets				
0100 Cash and Cash Equivalents	106,787			
0110 Investments				
0130 Due From Other Funds				
0147 Due from Component Unit				
0150 Other Receivables				
0170 Inventories				
0180 Prepaid Expenses (Expenditures)				
0190 Other Current Assets				
0220 Buildings and Building Improvements (Net)				
0230 Machinery, Equipment and Furniture (Net)				
Total Assets	\$106,787			
0910 Deferred Outflows of Resources				
Total Assets And Deferred Outflows Of Resources	\$106,787			

LEA : 101631703 Canon-McMillan SD

Printed 10/28/2016 9:28:47 AM

Amounts Expressed in Whole Dollars		<u>Other Agency</u> <u>(89)</u>	<u>Discrete Component Units</u> <u>(98)</u>	<u>Discrete Component Units</u> <u>(99)</u>	<u>Total Fiduciary Funds</u>
Assets And Deferred Outflows Of Resources					
Assets					
0100	Cash and Cash Equivalents				106,787
0110	Investments				
0130	Due From Other Funds				
0147	Due from Component Unit				
0150	Other Receivables				
0170	Inventories				
0180	Prepaid Expenses (Expenditures)				
0190	Other Current Assets				
0220	Buildings and Building Improvements (Net)				
0230	Machinery, Equipment and Furniture (Net)				
Total Assets					\$106,787
0910	Deferred Outflows of Resources				
Total Assets And Deferred Outflows Of Resources					\$106,787

LEA : 101631703 Canon-McMillan SD

Printed 10/28/2016 9:28:47 AM

Amounts Expressed in Whole Dollars	<u>Private Purpose Trust</u> <u>(71)</u>	<u>Investment Trust</u> <u>(72)</u>	<u>Pension Trust</u> <u>(73)</u>	<u>Activity</u> <u>(81)</u>
Liabilities, Deferred Inflows Of Resources And Net Position				
Liabilities				
0400 Due to Other Funds				
0411 Due to Other Governments				
0412 Due to Primary Government				
0413 Due to Component Unit				
0420 Accounts Payable	454			
0430 Contracts Payable				
0450 Short-Term Payables				
0461 Accrued Salaries and Benefits				
0462 Payroll Deductions and Withholding				
0480 Unearned Revenues				
0490 Other Current Liabilities	106,333			
Total Liabilities	\$106,787			
0950 Deferred Inflows of Resources				
Net Position				
0791 Invested in Capital Assets, Net of Related Debt				
0009 Restricted Net Position (0792 – 0798)				
0799 Unrestricted Net Position				
Total Net Position				
Total Liabilities, Deferred Inflows Of Resources And Net Position	\$106,787			

LEA : 101631703 Canon-McMillan SD

Printed 10/28/2016 9:28:47 AM

Amounts Expressed in Whole Dollars

<u>Other Agency</u> <u>(89)</u>	<u>Discrete Component Units</u> <u>(98)</u>	<u>Discrete Component Units</u> <u>(99)</u>	<u>Total Fiduciary Funds</u>
------------------------------------	--	--	------------------------------

Liabilities, Deferred Inflows Of Resources And Net Position

Liabilities

0400	Due to Other Funds			
0411	Due to Other Governments			
0412	Due to Primary Government			
0413	Due to Component Unit			
0420	Accounts Payable			454
0430	Contracts Payable			
0450	Short-Term Payables			
0461	Accrued Salaries and Benefits			
0462	Payroll Deductions and Withholding			
0480	Unearned Revenues			
0490	Other Current Liabilities			106,333
Total Liabilities				\$106,787

0950 Deferred Inflows of Resources

Net Position

0791	Invested in Capital Assets, Net of Related Debt
0009	Restricted Net Position (0792 – 0798)
0799	Unrestricted Net Position

Total Net Position	
--------------------	--

Total Liabilities, Deferred Inflows Of Resources And Net Position	\$106,787
---	-----------

LEA : 101631703 Canon-McMillan SD

General Fund (10)

Printed 10/28/2016 9:28:47 AM

Page - 1 of 4

	Revenue Reported In Current Year	Current Year Tax Accrual	Prior Year Tax Accrual	Taxes Collected In Current Year
Revenue from Local Sources				
6111 Current Real Estate Taxes	41,788,792.77			41,788,792.77
6112 Interim Real Estate Taxes	968,423.89			968,423.89
6113 Public Utility Realty Taxes	53,604.55			53,604.55
6114 Payments in Lieu of Current Taxes - State / Local	29,573.52			29,573.52
6143 Current Act 511 Local Services Taxes	120,385.51			120,385.51
6151 Current Act 511 Earned Income Taxes	5,604,787.08			5,604,787.08
6153 Current Act 511 Real Estate Transfer Taxes	1,501,994.97			1,501,994.97
6411 Delinquent Real Estate Taxes	1,418,189.06			1,418,189.06
6500 Earnings on Investments	45,507.04			
6700 Revenues from LEA Activities	84,408.87			
6832 Federal IDEA Revenue Received as Pass Through	521,015.00			
6910 Rentals	65,420.51			
6920 Contributions and Donations from Private Sources	57,441.60			
6941 Regular Day School Tuition	19,623.30			
6942 Summer School Tuition	79,990.00			
6944 Receipts from Other LEAs in Pennsylvania - Education	750,529.07			
6991 Refunds of a Prior Year Expenditure	63,356.77			
6999 Other Revenues Not Specified Above	154,962.16			
TOTAL Revenue from Local Sources	\$53,328,005.67			\$51,485,751.35

	Revenue Reported In Current Year			
Revenue from State Sources				
7110 Basic Education Funding	11,078,294.02			
7160 Tuition for Orphans Subsidy	16,696.53			
7271 Special Education funds for School-Aged Pupils	2,021,759.59			
7311 Pupil Transportation Subsidy	1,148,980.11			
7312 Nonpublic and Charter School Pupil Transportation Subsidy	167,860.00			
7320 Rental and Sinking Fund Payments / Building Reimbursement Subsidy	230,673.59			
7330 Health Services (Medical, Dental, Nurse, Act 25)	91,569.07			
7340 State Property Tax Reduction Allocation	925,480.79			
7505 Ready to Learn Block Grant	537,616.00			
7810 State Share of Social Security and Medicare Taxes	1,068,563.36			
7820 State Share of Retirement Contributions	3,830,029.78			
TOTAL Revenue from State Sources	\$21,117,522.84			

Revenue Reported <u>In Current Year</u>				
<u>Revenue from Federal Sources</u>				
8514	NCLB, Title I - Improving the Academic Achievement of the Disadvantaged	458,960.55		
8515	NCLB, Title II - Preparing, Training and Recruiting High Quality Teachers and Principals	216,578.69		
8810	School-Based Access Medicaid Reimbursement Program (SBAP) Reimbursements (Access)	7,534.43		
TOTAL Revenue from Federal Sources		\$683,073.67		

	Revenue Reported In Current Year	
<u>Other Financing Sources</u>		
9320 Special Revenue Fund Transfers	5,905.00	
9400 Sale of or Compensation for Loss of Fixed Assets	18,109.00	
TOTAL Other Financing Sources	\$24,014.00	
TOTAL FROM ALL SOURCES	\$75,152,616.18	\$51,485,751.35

Revenue from Local Sources	53,328,005.67
Revenue from State Sources	21,117,522.84
Revenue from Federal Sources	683,073.67
Other Financing Sources	24,014.00
TOTAL FROM ALL SOURCES	\$75,152,616.18

LEA : 101631703 Canon-McMillan SD

Printed 10/28/2016 9:28:49 AM

General Fund (10)	
1000 Instruction	<u>Total</u>
100 <u>Personnel Services – Salaries</u>	
100 Personnel Services – Salaries	20,022,272.60
Total Personnel Services – Salaries	\$20,022,272.60
200 <u>Personnel Services – Employee Benefits</u>	
210 Group Insurance – Contracted Provider	4,458,084.38
220 Social Security Contributions	1,506,717.18
230 PSERS Retirement Contributions	5,120,283.34
240 Tuition Reimbursement	141,055.00
250 Unemployment Compensation	405.39
260 Workers' Compensation	204,990.90
Total Personnel Services – Employee Benefits	\$11,431,536.19
300 <u>Purchased Professional and Technical Services</u>	
322 Professional Educational Services – Ius	977,137.17
330 Other Professional Services	89,597.25
390 Other Purchased Professional and Technical Services	25,242.99
Total Purchased Professional and Technical Services	\$1,091,977.41
400 <u>Purchased Property Services</u>	
430 Repairs and Maintenance Services	15,628.20
440 Rentals	80.00
Total Purchased Property Services	\$15,708.20
500 <u>Other Purchased Services</u>	
530 Communications	31.34
550 Printing and Binding	15,233.57
561 Tuition To Other School Districts Within the State	123,671.04
562 Tuition To Pennsylvania Charter Schools	1,148,473.17
564 Tuition To Career and Technology Centers	563,987.43
567 Tuition To Approved Private Schools (APS) and PA Chartered Schools for the Deaf and Blind	468,931.56
568 Tuition To Private Residential Rehabilitative Institutions (PRRI) [In-State] and Detention Centers	758,724.20
580 Travel	18,856.99
599 Other Miscellaneous Purchased Services	4,369.83
Total Other Purchased Services	\$3,102,279.13
600 <u>Supplies</u>	
610 General Supplies	642,456.13
640 Books and Periodicals	511,638.20
650 Supplies & Fees – Technology Related	66,756.50
Total Supplies	\$1,220,850.83
700 <u>Property</u>	
750 Equipment – Original and Additional	239,203.05
Total Property	\$239,203.05
800 <u>Other Objects</u>	
810 Dues and Fees	5,783.00

LEA : 101631703 Canon-McMillan SD

Printed 10/28/2016 9:28:49 AM

General Fund (10)

1000 Instruction		<u>Total</u>
Total Other Objects		\$5,783.00
Total 1000 Instruction		\$37,129,610.41

LEA : 101631703 Canon-McMillan SD

Printed 10/28/2016 9:28:49 AM

General Fund (10)

1100 Regular Programs – Elementary / Secondary	Elementary	Secondary	Federal	Total
100 Personnel Services – Salaries				
100 Personnel Services – Salaries	8,461,864.84	6,224,798.16	328,829.81	15,015,492.81
Total Personnel Services – Salaries	\$8,461,864.84	\$6,224,798.16	\$328,829.81	\$15,015,492.81
200 Personnel Services – Employee Benefits				
210 Group Insurance – Contracted Provider	1,786,117.95	1,175,837.78	72,409.42	3,034,365.15
220 Social Security Contributions	636,721.88	469,470.43	24,618.19	1,130,810.50
230 PSERS Retirement Contributions	2,149,818.57	1,601,033.40	84,569.25	3,835,421.22
240 Tuition Reimbursement	52,800.00	63,195.00		115,995.00
250 Unemployment Compensation	27.86	377.53		405.39
260 Workers' Compensation	86,634.50	63,729.96	3,366.58	153,731.04
Total Personnel Services – Employee Benefits	\$4,712,120.76	\$3,373,644.10	\$184,963.44	\$8,270,728.30
300 Purchased Professional and Technical Services				
322 Professional Educational Services – Ius	184,351.04	57,088.48	(100.00)	241,339.52
330 Other Professional Services	2,565.00			2,565.00
Total Purchased Professional and Technical Services	\$186,916.04	\$57,088.48	(\$100.00)	\$243,904.52
400 Purchased Property Services				
430 Repairs and Maintenance Services	4,458.88	8,794.07		13,252.95
Total Purchased Property Services	\$4,458.88	\$8,794.07		\$13,252.95
500 Other Purchased Services				
530 Communications			31.34	31.34
550 Printing and Binding	9,539.56	5,694.01		15,233.57
561 Tuition To Other School Districts Within the State		36,227.94		36,227.94
562 Tuition To Pennsylvania Charter Schools	127,462.43	678,822.35		806,284.78
568 Tuition To Private Residential Rehabilitative Institutions (PRRI) [In-State] and Detention Centers	4,243.75	4,243.74		8,487.49
580 Travel	6,997.00	8,225.20	1,009.74	16,231.94
599 Other Miscellaneous Purchased Services	1,777.25	2,592.58		4,369.83
Total Other Purchased Services	\$150,019.99	\$735,805.82	\$1,041.08	\$886,866.89
600 Supplies				
610 General Supplies	328,686.23	141,559.52	76,171.25	546,417.00
640 Books and Periodicals	113,745.19	339,306.99	40,955.48	494,007.66
650 Supplies & Fees – Technology Related	32,421.75	34,334.75		66,756.50
Total Supplies	\$474,853.17	\$515,201.26	\$117,126.73	\$1,107,181.16
700 Property				
750 Equipment – Original and Additional	96,934.74	118,119.78		215,054.52
Total Property	\$96,934.74	\$118,119.78		\$215,054.52
800 Other Objects				
810 Dues and Fees	860.00	409.00		1,269.00
Total Other Objects	\$860.00	\$409.00		\$1,269.00
Total 1100 Regular Programs – Elementary / Secondary	\$14,088,028.42	\$11,033,860.67	\$631,861.06	\$25,753,750.15

LEA : 101631703 Canon-McMillan SD

Printed 10/28/2016 9:28:49 AM

General Fund (10)				
1110 Regular Programs	<u>Elementary</u>	<u>Secondary</u>	<u>Federal</u>	<u>Total</u>
100 <u>Personnel Services – Salaries</u>				
100 Personnel Services – Salaries	8,461,864.84	6,224,798.16		14,686,663.00
Total Personnel Services – Salaries	\$8,461,864.84	\$6,224,798.16		\$14,686,663.00
200 <u>Personnel Services – Employee Benefits</u>				
210 Group Insurance – Contracted Provider	1,786,117.95	1,175,837.78		2,961,955.73
220 Social Security Contributions	636,721.88	469,470.43		1,106,192.31
230 PSERS Retirement Contributions	2,149,818.57	1,601,033.40		3,750,851.97
240 Tuition Reimbursement	52,800.00	63,195.00		115,995.00
250 Unemployment Compensation	27.86	377.53		405.39
260 Workers' Compensation	86,634.50	63,729.96		150,364.46
Total Personnel Services – Employee Benefits	\$4,712,120.76	\$3,373,644.10		\$8,085,764.86
300 <u>Purchased Professional and Technical Services</u>				
322 Professional Educational Services – Ius	184,351.04	57,088.48		241,439.52
330 Other Professional Services	2,565.00			2,565.00
Total Purchased Professional and Technical Services	\$186,916.04	\$57,088.48		\$244,004.52
400 <u>Purchased Property Services</u>				
430 Repairs and Maintenance Services	4,458.88	8,794.07		13,252.95
Total Purchased Property Services	\$4,458.88	\$8,794.07		\$13,252.95
500 <u>Other Purchased Services</u>				
550 Printing and Binding	9,539.56	5,694.01		15,233.57
561 Tuition To Other School Districts Within the State		36,227.94		36,227.94
562 Tuition To Pennsylvania Charter Schools	127,462.43	678,822.35		806,284.78
568 Tuition To Private Residential Rehabilitative Institutions (PRRI) [In-State] and Detention Centers	4,243.75	4,243.74		8,487.49
580 Travel	6,997.00	8,225.20		15,222.20
599 Other Miscellaneous Purchased Services	1,777.25	2,592.58		4,369.83
Total Other Purchased Services	\$150,019.99	\$735,805.82		\$885,825.81
600 <u>Supplies</u>				
610 General Supplies	328,686.23	141,559.52		470,245.75
640 Books and Periodicals	113,745.19	339,306.99		453,052.18
650 Supplies & Fees – Technology Related	32,421.75	34,334.75		66,756.50
Total Supplies	\$474,853.17	\$515,201.26		\$990,054.43
700 <u>Property</u>				
750 Equipment – Original and Additional	96,934.74	118,119.78		215,054.52
Total Property	\$96,934.74	\$118,119.78		\$215,054.52
800 <u>Other Objects</u>				
810 Dues and Fees	860.00	409.00		1,269.00
Total Other Objects	\$860.00	\$409.00		\$1,269.00
Total 1110 Regular Programs	\$14,088,028.42	\$11,033,860.67		\$25,121,889.09

LEA : 101631703 Canon-McMillan SD

Printed 10/28/2016 9:28:49 AM

General Fund (10)				
1190 Federally-Funded Regular Programs	Elementary	Secondary	Federal	Total
100 Personnel Services – Salaries				
100 Personnel Services – Salaries			328,829.81	328,829.81
Total Personnel Services – Salaries			\$328,829.81	\$328,829.81
200 Personnel Services – Employee Benefits				
210 Group Insurance – Contracted Provider			72,409.42	72,409.42
220 Social Security Contributions			24,618.19	24,618.19
230 PSERS Retirement Contributions			84,569.25	84,569.25
260 Workers' Compensation			3,366.58	3,366.58
Total Personnel Services – Employee Benefits			\$184,963.44	\$184,963.44
300 Purchased Professional and Technical Services				
322 Professional Educational Services – Ius			(100.00)	(100.00)
Total Purchased Professional and Technical Services			(\$100.00)	(\$100.00)
500 Other Purchased Services				
530 Communications			31.34	31.34
580 Travel			1,009.74	1,009.74
Total Other Purchased Services			\$1,041.08	\$1,041.08
600 Supplies				
610 General Supplies			76,171.25	76,171.25
640 Books and Periodicals			40,955.48	40,955.48
Total Supplies			\$117,126.73	\$117,126.73
Total 1190 Federally-Funded Regular Programs			\$631,861.06	\$631,861.06

LEA : 101631703 Canon-McMillan SD

Printed 10/28/2016 9:28:49 AM

General Fund (10)				
1200 Special Programs – Elementary / Secondary	<u>Elementary</u>	<u>Secondary</u>	<u>Federal</u>	<u>Total</u>
100 <u>Personnel Services – Salaries</u>				
100 Personnel Services – Salaries	2,652,152.25	1,361,545.45		4,013,697.70
Total Personnel Services – Salaries	\$2,652,152.25	\$1,361,545.45		\$4,013,697.70
200 <u>Personnel Services – Employee Benefits</u>				
210 Group Insurance – Contracted Provider	866,561.98	337,479.69		1,204,041.67
220 Social Security Contributions	198,915.62	102,228.75		301,144.37
230 PSERS Retirement Contributions	679,195.04	350,347.98		1,029,543.02
240 Tuition Reimbursement	21,120.00	3,940.00		25,060.00
260 Workers' Compensation	27,152.77	13,939.83		41,092.60
Total Personnel Services – Employee Benefits	\$1,792,945.41	\$807,936.25		\$2,600,881.66
300 <u>Purchased Professional and Technical Services</u>				
322 Professional Educational Services – lus	121,142.97	75,569.59	517,696.00	714,408.56
330 Other Professional Services	228.00	86,804.25		87,032.25
Total Purchased Professional and Technical Services	\$121,370.97	\$162,373.84	\$517,696.00	\$801,440.81
400 <u>Purchased Property Services</u>				
430 Repairs and Maintenance Services	100.00			100.00
440 Rentals	40.00	40.00		80.00
Total Purchased Property Services	\$140.00	\$40.00		\$180.00
500 <u>Other Purchased Services</u>				
561 Tuition To Other School Districts Within the State		1,577.00		1,577.00
562 Tuition To Pennsylvania Charter Schools	43,831.52	298,356.87		342,188.39
567 Tuition To Approved Private Schools (APS) and PA Chartered Schools for the Deaf and Blind	234,465.78	234,465.78		468,931.56
568 Tuition To Private Residential Rehabilitative Institutions (PRRI) [In-State] and Detention Centers	291,384.34	456,041.56		747,425.90
580 Travel	1,399.13	859.00		2,258.13
Total Other Purchased Services	\$571,080.77	\$991,300.21		\$1,562,380.98
600 <u>Supplies</u>				
610 General Supplies	28,174.79	20,742.98		48,917.77
640 Books and Periodicals	7,602.26	5,181.10		12,783.36
Total Supplies	\$35,777.05	\$25,924.08		\$61,701.13
700 <u>Property</u>				
750 Equipment – Original and Additional	11,926.34	11,805.14		23,731.48
Total Property	\$11,926.34	\$11,805.14		\$23,731.48
800 <u>Other Objects</u>				
810 Dues and Fees	1,574.00	2,540.00		4,114.00
Total Other Objects	\$1,574.00	\$2,540.00		\$4,114.00
Total 1200 Special Programs – Elementary / Secondary	\$5,186,966.79	\$3,363,464.97	\$517,696.00	\$9,068,127.76

LEA : 101631703 Canon-McMillan SD

Printed 10/28/2016 9:28:49 AM

General Fund (10)				
1210 Life Skills Support	<u>Elementary</u>	<u>Secondary</u>	<u>Federal</u>	<u>Total</u>
600 <u>Supplies</u>				
610 General Supplies	4,870.33	4,890.53		9,760.86
Total Supplies	\$4,870.33	\$4,890.53		\$9,760.86
700 <u>Property</u>				
750 Equipment – Original and Additional	865.00			865.00
Total Property	\$865.00			\$865.00
800 <u>Other Objects</u>				
810 Dues and Fees		1,565.00		1,565.00
Total Other Objects		\$1,565.00		\$1,565.00
Total 1210 Life Skills Support	\$5,735.33	\$6,455.53		\$12,190.86

LEA : 101631703 Canon-McMillan SD

Printed 10/28/2016 9:28:49 AM

General Fund (10)				
1220 Sensory Support	<u>Elementary</u>	<u>Secondary</u>	<u>Federal</u>	<u>Total</u>
100 <u>Personnel Services – Salaries</u>				
100 Personnel Services – Salaries	275,497.35	17,676.07		293,173.42
Total Personnel Services – Salaries	\$275,497.35	\$17,676.07		\$293,173.42
200 <u>Personnel Services – Employee Benefits</u>				
210 Group Insurance – Contracted Provider	78,608.31	8,249.28		86,857.59
220 Social Security Contributions	20,550.43	1,318.64		21,869.07
230 PSERS Retirement Contributions	71,104.75	4,567.55		75,672.30
260 Workers' Compensation	2,820.39	181.08		3,001.47
Total Personnel Services – Employee Benefits	\$173,083.88	\$14,316.55		\$187,400.43
500 <u>Other Purchased Services</u>				
580 Travel	117.45			117.45
Total Other Purchased Services	\$117.45			\$117.45
600 <u>Supplies</u>				
610 General Supplies	2,499.75	838.14		3,337.89
Total Supplies	\$2,499.75	\$838.14		\$3,337.89
800 <u>Other Objects</u>				
810 Dues and Fees	900.00	225.00		1,125.00
Total Other Objects	\$900.00	\$225.00		\$1,125.00
Total 1220 Sensory Support	\$452,098.43	\$33,055.76		\$485,154.19

LEA : 101631703 Canon-McMillan SD

Printed 10/28/2016 9:28:49 AM

General Fund (10)				
1230 Emotional Support	<u>Elementary</u>	<u>Secondary</u>	<u>Federal</u>	<u>Total</u>
100 <u>Personnel Services – Salaries</u>				
100 Personnel Services – Salaries	389,998.81	137,321.63		527,320.44
Total Personnel Services – Salaries	\$389,998.81	\$137,321.63		\$527,320.44
200 <u>Personnel Services – Employee Benefits</u>				
210 Group Insurance – Contracted Provider	144,204.60	49,585.05		193,789.65
220 Social Security Contributions	29,149.24	10,265.71		39,414.95
230 PSERS Retirement Contributions	100,491.67	35,425.90		135,917.57
260 Workers' Compensation	3,992.85	1,405.82		5,398.67
Total Personnel Services – Employee Benefits	\$277,838.36	\$96,682.48		\$374,520.84
500 <u>Other Purchased Services</u>				
580 Travel	50.00			50.00
Total Other Purchased Services	\$50.00			\$50.00
600 <u>Supplies</u>				
610 General Supplies	5,009.69			5,009.69
Total Supplies	\$5,009.69			\$5,009.69
Total 1230 Emotional Support	\$672,896.86	\$234,004.11		\$906,900.97

LEA : 101631703 Canon-McMillan SD

Printed 10/28/2016 9:28:49 AM

General Fund (10)				
1240 Academic Support	<u>Elementary</u>	<u>Secondary</u>	<u>Federal</u>	<u>Total</u>
100 <u>Personnel Services – Salaries</u>				
100 Personnel Services – Salaries	1,953,756.38	1,206,547.75		3,160,304.13
Total Personnel Services – Salaries	\$1,953,756.38	\$1,206,547.75		\$3,160,304.13
200 <u>Personnel Services – Employee Benefits</u>				
210 Group Insurance – Contracted Provider	643,749.07	279,645.36		923,394.43
220 Social Security Contributions	146,723.67	90,644.40		237,368.07
230 PSERS Retirement Contributions	499,277.17	310,354.53		809,631.70
240 Tuition Reimbursement	21,120.00	3,940.00		25,060.00
260 Workers' Compensation	20,002.73	12,352.93		32,355.66
Total Personnel Services – Employee Benefits	\$1,330,872.64	\$696,937.22		\$2,027,809.86
300 <u>Purchased Professional and Technical Services</u>				
330 Other Professional Services	228.00	22,914.25		23,142.25
Total Purchased Professional and Technical Services	\$228.00	\$22,914.25		\$23,142.25
500 <u>Other Purchased Services</u>				
580 Travel	1,231.68	859.00		2,090.68
Total Other Purchased Services	\$1,231.68	\$859.00		\$2,090.68
600 <u>Supplies</u>				
610 General Supplies	6,201.76	6,912.96		13,114.72
640 Books and Periodicals	7,602.26	5,181.10		12,783.36
Total Supplies	\$13,804.02	\$12,094.06		\$25,898.08
800 <u>Other Objects</u>				
810 Dues and Fees	274.00	145.00		419.00
Total Other Objects	\$274.00	\$145.00		\$419.00
Total 1240 Academic Support	\$3,300,166.72	\$1,939,497.28		\$5,239,664.00

LEA : 101631703 Canon-McMillan SD

Printed 10/28/2016 9:28:49 AM

General Fund (10)				
1241 Learning Support – Public	<u>Elementary</u>	<u>Secondary</u>	<u>Federal</u>	<u>Total</u>
100 <u>Personnel Services – Salaries</u>				
100 Personnel Services – Salaries	1,848,156.38	1,056,447.75		2,904,604.13
Total Personnel Services – Salaries	\$1,848,156.38	\$1,056,447.75		\$2,904,604.13
200 <u>Personnel Services – Employee Benefits</u>				
210 Group Insurance – Contracted Provider	610,714.75	268,686.48		879,401.23
220 Social Security Contributions	138,886.08	79,280.24		218,166.32
230 PSERS Retirement Contributions	471,989.91	271,568.68		743,558.59
240 Tuition Reimbursement	21,120.00	3,940.00		25,060.00
260 Workers' Compensation	18,921.60	10,816.10		29,737.70
Total Personnel Services – Employee Benefits	\$1,261,632.34	\$634,291.50		\$1,895,923.84
500 <u>Other Purchased Services</u>				
580 Travel	129.20			129.20
Total Other Purchased Services	\$129.20			\$129.20
600 <u>Supplies</u>				
610 General Supplies	2,858.64	2,956.33		5,814.97
640 Books and Periodicals	7,602.26	5,181.10		12,783.36
Total Supplies	\$10,460.90	\$8,137.43		\$18,598.33
Total 1241 Learning Support – Public	\$3,120,378.82	\$1,698,876.68		\$4,819,255.50

LEA : 101631703 Canon-McMillan SD

Printed 10/28/2016 9:28:49 AM

General Fund (10)

1243 Gifted Support	Elementary	Secondary	Federal	Total
100 <u>Personnel Services – Salaries</u>				
100 Personnel Services – Salaries	105,600.00	150,100.00		255,700.00
Total Personnel Services – Salaries	\$105,600.00	\$150,100.00		\$255,700.00
200 <u>Personnel Services – Employee Benefits</u>				
210 Group Insurance – Contracted Provider	33,034.32	10,958.88		43,993.20
220 Social Security Contributions	7,837.59	11,364.16		19,201.75
230 PSERS Retirement Contributions	27,287.26	38,785.85		66,073.11
260 Workers' Compensation	1,081.13	1,536.83		2,617.96
Total Personnel Services – Employee Benefits	\$69,240.30	\$62,645.72		\$131,886.02
300 <u>Purchased Professional and Technical Services</u>				
330 Other Professional Services	228.00	22,914.25		23,142.25
Total Purchased Professional and Technical Services	\$228.00	\$22,914.25		\$23,142.25
500 <u>Other Purchased Services</u>				
580 Travel	1,102.48	859.00		1,961.48
Total Other Purchased Services	\$1,102.48	\$859.00		\$1,961.48
600 <u>Supplies</u>				
610 General Supplies	3,343.12	3,956.63		7,299.75
Total Supplies	\$3,343.12	\$3,956.63		\$7,299.75
800 <u>Other Objects</u>				
810 Dues and Fees	274.00	145.00		419.00
Total Other Objects	\$274.00	\$145.00		\$419.00
Total 1243 Gifted Support	\$179,787.90	\$240,620.60		\$420,408.50

LEA : 101631703 Canon-McMillan SD

Printed 10/28/2016 9:28:49 AM

General Fund (10)

1270 Multi-Handicapped Support

	<u>Elementary</u>	<u>Secondary</u>	<u>Federal</u>	<u>Total</u>
600 <u>Supplies</u>				
610 General Supplies	78.88			78.88
Total Supplies	\$78.88			\$78.88
Total 1270 Multi-Handicapped Support	\$78.88			\$78.88

LEA : 101631703 Canon-McMillan SD

Printed 10/28/2016 9:28:49 AM

General Fund (10)				
1290 Special Programs - Other Support	Elementary	Secondary	Federal	Total
100 <u>Personnel Services – Salaries</u>				
100 Personnel Services – Salaries	32,899.71			32,899.71
Total Personnel Services – Salaries	\$32,899.71			\$32,899.71
200 <u>Personnel Services – Employee Benefits</u>				
220 Social Security Contributions	2,492.28			2,492.28
230 PSERS Retirement Contributions	8,321.45			8,321.45
260 Workers’ Compensation	336.80			336.80
Total Personnel Services – Employee Benefits	\$11,150.53			\$11,150.53
300 <u>Purchased Professional and Technical Services</u>				
322 Professional Educational Services – Ius	121,142.97	75,569.59	517,696.00	714,408.56
330 Other Professional Services		63,890.00		63,890.00
Total Purchased Professional and Technical Services	\$121,142.97	\$139,459.59	\$517,696.00	\$778,298.56
400 <u>Purchased Property Services</u>				
430 Repairs and Maintenance Services	100.00			100.00
440 Rentals	40.00	40.00		80.00
Total Purchased Property Services	\$140.00	\$40.00		\$180.00
500 <u>Other Purchased Services</u>				
561 Tuition To Other School Districts Within the State		1,577.00		1,577.00
562 Tuition To Pennsylvania Charter Schools	43,831.52	298,356.87		342,188.39
567 Tuition To Approved Private Schools (APS) and PA Chartered Schools for the Deaf and Blind	234,465.78	234,465.78		468,931.56
568 Tuition To Private Residential Rehabilitative Institutions (PRRI) [In-State] and Detention Centers	291,384.34	456,041.56		747,425.90
Total Other Purchased Services	\$569,681.64	\$990,441.21		\$1,560,122.85
600 <u>Supplies</u>				
610 General Supplies	9,514.38	8,101.35		17,615.73
Total Supplies	\$9,514.38	\$8,101.35		\$17,615.73
700 <u>Property</u>				
750 Equipment – Original and Additional	11,061.34	11,805.14		22,866.48
Total Property	\$11,061.34	\$11,805.14		\$22,866.48
800 <u>Other Objects</u>				
810 Dues and Fees	400.00	605.00		1,005.00
Total Other Objects	\$400.00	\$605.00		\$1,005.00
Total 1290 Special Programs - Other Support	\$755,990.57	\$1,150,452.29	\$517,696.00	\$2,424,138.86

LEA : 101631703 Canon-McMillan SD

Printed 10/28/2016 9:28:49 AM

General Fund (10)				
1300 Vocational Education	<u>Elementary</u>	<u>Secondary</u>	<u>Federal</u>	<u>Total</u>
100 <u>Personnel Services – Salaries</u>				
100 Personnel Services – Salaries		909,586.84		909,586.84
Total Personnel Services – Salaries		\$909,586.84		\$909,586.84
200 <u>Personnel Services – Employee Benefits</u>				
210 Group Insurance – Contracted Provider		219,677.56		219,677.56
220 Social Security Contributions		68,415.77		68,415.77
230 PSERS Retirement Contributions		234,921.47		234,921.47
260 Workers' Compensation		9,312.44		9,312.44
Total Personnel Services – Employee Benefits		\$532,327.24		\$532,327.24
400 <u>Purchased Property Services</u>				
430 Repairs and Maintenance Services		2,275.25		2,275.25
Total Purchased Property Services		\$2,275.25		\$2,275.25
500 <u>Other Purchased Services</u>				
564 Tuition To Career and Technology Centers		404,947.43		404,947.43
580 Travel		366.92		366.92
Total Other Purchased Services		\$405,314.35		\$405,314.35
600 <u>Supplies</u>				
610 General Supplies		47,121.36		47,121.36
640 Books and Periodicals		4,847.18		4,847.18
Total Supplies		\$51,968.54		\$51,968.54
700 <u>Property</u>				
750 Equipment – Original and Additional		417.05		417.05
Total Property		\$417.05		\$417.05
Total 1300 Vocational Education		\$1,901,889.27		\$1,901,889.27

LEA : 101631703 Canon-McMillan SD

Printed 10/28/2016 9:28:49 AM

General Fund (10)				
1400 Other Instructional Programs – Elementary / Secondary	<u>Elementary</u>	<u>Secondary</u>	<u>Federal</u>	<u>Total</u>
100 <u>Personnel Services – Salaries</u>				
100 Personnel Services – Salaries	11,311.75	72,183.50		83,495.25
Total Personnel Services – Salaries	\$11,311.75	\$72,183.50		\$83,495.25
200 <u>Personnel Services – Employee Benefits</u>				
220 Social Security Contributions	853.62	5,492.92		6,346.54
230 PSERS Retirement Contributions	2,922.95	17,474.68		20,397.63
260 Workers’ Compensation	115.78	739.04		854.82
Total Personnel Services – Employee Benefits	\$3,892.35	\$23,706.64		\$27,598.99
300 <u>Purchased Professional and Technical Services</u>				
390 Other Purchased Professional and Technical Services		25,242.99		25,242.99
Total Purchased Professional and Technical Services		\$25,242.99		\$25,242.99
500 <u>Other Purchased Services</u>				
561 Tuition To Other School Districts Within the State		85,866.10		85,866.10
564 Tuition To Career and Technology Centers		159,040.00		159,040.00
568 Tuition To Private Residential Rehabilitative Institutions (PRRI) [In-State] and Detention Centers	934.20	1,876.61		2,810.81
Total Other Purchased Services	\$934.20	\$246,782.71		\$247,716.91
800 <u>Other Objects</u>				
810 Dues and Fees	200.00	200.00		400.00
Total Other Objects	\$200.00	\$200.00		\$400.00
Total 1400 Other Instructional Programs – Elementary / Secondary	\$16,338.30	\$368,115.84		\$384,454.14

LEA : 101631703 Canon-McMillan SD

Printed 10/28/2016 9:28:49 AM

General Fund (10)				
1420 Summer School	<u>Elementary</u>	<u>Secondary</u>	<u>Federal</u>	<u>Total</u>
100 <u>Personnel Services – Salaries</u>				
100 Personnel Services – Salaries	5,290.00	58,683.00		63,973.00
Total Personnel Services – Salaries	\$5,290.00	\$58,683.00		\$63,973.00
200 <u>Personnel Services – Employee Benefits</u>				
220 Social Security Contributions	400.39	4,466.02		4,866.41
230 PSERS Retirement Contributions	1,366.95	15,163.67		16,530.62
260 Workers’ Compensation	54.14	600.82		654.96
Total Personnel Services – Employee Benefits	\$1,821.48	\$20,230.51		\$22,051.99
Total 1420 Summer School	\$7,111.48	\$78,913.51		\$86,024.99

LEA : 101631703 Canon-McMillan SD

Printed 10/28/2016 9:28:49 AM

General Fund (10)				
1430 Homebound Instruction	<u>Elementary</u>	<u>Secondary</u>	<u>Federal</u>	<u>Total</u>
100 <u>Personnel Services – Salaries</u>				
100 Personnel Services – Salaries	6,021.75	13,500.50		19,522.25
Total Personnel Services – Salaries	\$6,021.75	\$13,500.50		\$19,522.25
200 <u>Personnel Services – Employee Benefits</u>				
220 Social Security Contributions	453.23	1,026.90		1,480.13
230 PSERS Retirement Contributions	1,556.00	2,311.01		3,867.01
260 Workers’ Compensation	61.64	138.22		199.86
Total Personnel Services – Employee Benefits	\$2,070.87	\$3,476.13		\$5,547.00
Total 1430 Homebound Instruction	\$8,092.62	\$16,976.63		\$25,069.25

LEA : 101631703 Canon-McMillan SD

Printed 10/28/2016 9:28:49 AM

General Fund (10)

1440 Alternative Regular Education Programs	<u>Elementary</u>	<u>Secondary</u>	<u>Federal</u>	<u>Total</u>
300 <u>Purchased Professional and Technical Services</u>				
390 Other Purchased Professional and Technical Services		25,242.99		25,242.99
Total Purchased Professional and Technical Services		\$25,242.99		\$25,242.99
500 <u>Other Purchased Services</u>				
561 Tuition To Other School Districts Within the State		85,866.10		85,866.10
564 Tuition To Career and Technology Centers		159,040.00		159,040.00
568 Tuition To Private Residential Rehabilitative Institutions (PRRI) [In-State] and Detention Centers	934.20	1,876.61		2,810.81
Total Other Purchased Services	\$934.20	\$246,782.71		\$247,716.91
800 <u>Other Objects</u>				
810 Dues and Fees	200.00	200.00		400.00
Total Other Objects	\$200.00	\$200.00		\$400.00
Total 1440 Alternative Regular Education Programs	\$1,134.20	\$272,225.70		\$273,359.90

LEA : 101631703 Canon-McMillan SD

Printed 10/28/2016 9:28:49 AM

General Fund (10)

1441 Adjudicated / Court-Placed Programs	<u>Elementary</u>	<u>Secondary</u>	<u>Federal</u>	<u>Total</u>
300 <u>Purchased Professional and Technical Services</u>				
390 Other Purchased Professional and Technical Services		25,242.99		25,242.99
Total Purchased Professional and Technical Services		\$25,242.99		\$25,242.99
500 <u>Other Purchased Services</u>				
561 Tuition To Other School Districts Within the State		85,866.10		85,866.10
Total Other Purchased Services		\$85,866.10		\$85,866.10
Total 1441 Adjudicated / Court-Placed Programs		\$111,109.09		\$111,109.09

LEA : 101631703 Canon-McMillan SD

Printed 10/28/2016 9:28:49 AM

General Fund (10)				
1442 Alternative Education Programs	<u>Elementary</u>	<u>Secondary</u>	<u>Federal</u>	<u>Total</u>
500 <u>Other Purchased Services</u>				
564 Tuition To Career and Technology Centers		159,040.00		159,040.00
568 Tuition To Private Residential Rehabilitative Institutions (PRRI) [In-State] and Detention Centers	934.20	1,876.61		2,810.81
Total Other Purchased Services	\$934.20	\$160,916.61		\$161,850.81
800 <u>Other Objects</u>				
810 Dues and Fees	200.00	200.00		400.00
Total Other Objects	\$200.00	\$200.00		\$400.00
Total 1442 Alternative Education Programs	\$1,134.20	\$161,116.61		\$162,250.81

LEA : 101631703 Canon-McMillan SD

Printed 10/28/2016 9:28:49 AM

General Fund (10)				
1500 Nonpublic School Programs				
	<u>Elementary</u>	<u>Secondary</u>	<u>Federal</u>	<u>Total</u>
300 <u>Purchased Professional and Technical Services</u>				
322 Professional Educational Services – lus			21,389.09	21,389.09
Total Purchased Professional and Technical Services			\$21,389.09	\$21,389.09
Total 1500 Nonpublic School Programs			\$21,389.09	\$21,389.09

LEA : 101631703 Canon-McMillan SD

Printed 10/28/2016 9:28:51 AM

General Fund (10)

2000 Support Services		<u>Total</u>
100 <u>Personnel Services – Salaries</u>		
100 Personnel Services – Salaries	9,156,962.10	
Total Personnel Services – Salaries	\$9,156,962.10	
200 <u>Personnel Services – Employee Benefits</u>		
210 Group Insurance – Contracted Provider	2,421,416.74	
220 Social Security Contributions	688,374.91	
230 PSERS Retirement Contributions	2,340,775.85	
240 Tuition Reimbursement	13,178.00	
250 Unemployment Compensation	1,588.33	
260 Workers' Compensation	93,326.41	
290 Other Current Employee Benefits	33,559.80	
Total Personnel Services – Employee Benefits	\$5,592,220.04	
300 <u>Purchased Professional and Technical Services</u>		
322 Professional Educational Services – Ius	407,825.44	
329 Professional Educational Services – Other	21,150.63	
330 Other Professional Services	1,666,900.99	
350 Security / Safety Services	170,535.82	
Total Purchased Professional and Technical Services	\$2,266,412.88	
400 <u>Purchased Property Services</u>		
410 Cleaning Services	128,829.55	
420 Utility Services	854,314.94	
430 Repairs and Maintenance Services	312,970.26	
440 Rentals	184,738.70	
460 Extermination Services	6,320.00	
Total Purchased Property Services	\$1,487,173.45	
500 <u>Other Purchased Services</u>		
513 Contracted Carriers	2,006,591.92	
516 Student Transportation Services From the IU	45,317.42	
520 Insurance – General	88,652.50	
521 Fire Insurance	81,992.00	
522 Automotive Liability Insurance	44,525.00	
523 General Property and Liability Insurance	20,797.00	
529 Other Insurance	658.15	
530 Communications	250,573.77	
549 Other Advertising/Public Relations	17,403.38	
550 Printing and Binding	3,761.01	
580 Travel	80,814.05	
595 IU Payments By Withholding	77,445.19	
Total Other Purchased Services	\$2,718,531.39	
600 <u>Supplies</u>		
610 General Supplies	611,690.79	
620 Energy	442,611.78	
630 Food	4,642.73	
640 Books and Periodicals	49,220.64	

LEA : 101631703 Canon-McMillan SD

Printed 10/28/2016 9:28:51 AM

General Fund (10)		
2000 Support Services		<u>Total</u>
600 <u>Supplies</u>		
650 Supplies & Fees – Technology Related		75,016.93
Total Supplies		\$1,183,182.87
700 <u>Property</u>		
750 Equipment – Original and Additional		277,250.52
760 Equipment – Replacement		409,385.05
Total Property		\$686,635.57
800 <u>Other Objects</u>		
810 Dues and Fees		52,926.07
890 Miscellaneous Expenditures		30,265.98
899 Pass-Through Funds		669,769.07
Total Other Objects		\$752,961.12
Total 2000 Support Services		\$23,844,079.42

LEA : 101631703 Canon-McMillan SD

Printed 10/28/2016 9:28:51 AM

General Fund (10)				
2100 Support Services – Students	<u>Elementary</u>	<u>Secondary</u>	<u>Federal</u>	<u>Total</u>
100 <u>Personnel Services – Salaries</u>				
100 Personnel Services – Salaries	479,131.27	515,853.62		1,044,949.12
Total Personnel Services – Salaries	\$479,131.27	\$515,853.62		\$1,044,949.12
200 <u>Personnel Services – Employee Benefits</u>				
210 Group Insurance – Contracted Provider	89,176.94	117,611.09		223,069.45
220 Social Security Contributions	36,103.41	38,886.94		78,738.13
230 PSERS Retirement Contributions	123,116.02	133,296.52		268,270.96
240 Tuition Reimbursement		3,080.00		3,080.00
260 Workers' Compensation	4,905.31	5,281.04		10,697.96
Total Personnel Services – Employee Benefits	\$253,301.68	\$298,155.59		\$583,856.50
300 <u>Purchased Professional and Technical Services</u>				
329 Professional Educational Services – Other	11,844.35	9,306.28		21,150.63
330 Other Professional Services	211,362.62	132,589.98		343,952.60
Total Purchased Professional and Technical Services	\$223,206.97	\$141,896.26		\$365,103.23
500 <u>Other Purchased Services</u>				
530 Communications	7,064.22	4,709.69		11,773.91
550 Printing and Binding	710.16	142.20		852.36
580 Travel	1,452.92	1,421.34		2,874.26
Total Other Purchased Services	\$9,227.30	\$6,273.23		\$15,500.53
600 <u>Supplies</u>				
610 General Supplies	4,651.50	4,796.95		9,448.45
Total Supplies	\$4,651.50	\$4,796.95		\$9,448.45
800 <u>Other Objects</u>				
810 Dues and Fees	660.00	660.00		1,320.00
Total Other Objects	\$660.00	\$660.00		\$1,320.00
Total 2100 Support Services – Students	\$970,178.72	\$967,635.65		\$2,020,177.83

LEA : 101631703 Canon-McMillan SD

Printed 10/28/2016 9:28:51 AM

General Fund (10)				
2110 Supervision of Student Services	<u>Elementary</u>	<u>Secondary</u>	<u>Federal</u>	<u>Total</u>
100 <u>Personnel Services – Salaries</u>				
100 Personnel Services – Salaries	67,016.37	66,188.38		133,204.75
Total Personnel Services – Salaries	\$67,016.37	\$66,188.38		\$133,204.75
200 <u>Personnel Services – Employee Benefits</u>				
210 Group Insurance – Contracted Provider	16,540.00	16,539.54		33,079.54
220 Social Security Contributions	5,012.50	4,947.98		9,960.48
230 PSERS Retirement Contributions	16,909.43	17,103.00		34,012.43
260 Workers' Compensation	686.14	677.45		1,363.59
Total Personnel Services – Employee Benefits	\$39,148.07	\$39,267.97		\$78,416.04
300 <u>Purchased Professional and Technical Services</u>				
330 Other Professional Services	2,894.37	2,894.36		5,788.73
Total Purchased Professional and Technical Services	\$2,894.37	\$2,894.36		\$5,788.73
500 <u>Other Purchased Services</u>				
530 Communications	1,581.50	1,035.07		2,616.57
550 Printing and Binding	142.20	142.20		284.40
580 Travel	1,427.92	1,396.34		2,824.26
Total Other Purchased Services	\$3,151.62	\$2,573.61		\$5,725.23
600 <u>Supplies</u>				
610 General Supplies	955.01	1,427.48		2,382.49
Total Supplies	\$955.01	\$1,427.48		\$2,382.49
800 <u>Other Objects</u>				
810 Dues and Fees	660.00	660.00		1,320.00
Total Other Objects	\$660.00	\$660.00		\$1,320.00
Total 2110 Supervision of Student Services	\$113,825.44	\$113,011.80		\$226,837.24

LEA : 101631703 Canon-McMillan SD

Printed 10/28/2016 9:28:51 AM

General Fund (10)				
2111 Supervision of Student Services – Head of Component	<u>Elementary</u>	<u>Secondary</u>	<u>Federal</u>	<u>Total</u>
100 <u>Personnel Services – Salaries</u>				
100 Personnel Services – Salaries	67,016.37	66,188.38		133,204.75
Total Personnel Services – Salaries	\$67,016.37	\$66,188.38		\$133,204.75
200 <u>Personnel Services – Employee Benefits</u>				
210 Group Insurance – Contracted Provider	16,540.00	16,539.54		33,079.54
220 Social Security Contributions	5,012.50	4,947.98		9,960.48
230 PSERS Retirement Contributions	16,909.43	17,103.00		34,012.43
260 Workers' Compensation	686.14	677.45		1,363.59
Total Personnel Services – Employee Benefits	\$39,148.07	\$39,267.97		\$78,416.04
300 <u>Purchased Professional and Technical Services</u>				
330 Other Professional Services	2,894.37	2,894.36		5,788.73
Total Purchased Professional and Technical Services	\$2,894.37	\$2,894.36		\$5,788.73
500 <u>Other Purchased Services</u>				
530 Communications	1,581.50	1,035.07		2,616.57
550 Printing and Binding	142.20	142.20		284.40
580 Travel	1,427.92	1,396.34		2,824.26
Total Other Purchased Services	\$3,151.62	\$2,573.61		\$5,725.23
600 <u>Supplies</u>				
610 General Supplies	955.01	1,427.48		2,382.49
Total Supplies	\$955.01	\$1,427.48		\$2,382.49
800 <u>Other Objects</u>				
810 Dues and Fees	660.00	660.00		1,320.00
Total Other Objects	\$660.00	\$660.00		\$1,320.00
Total 2111 Supervision of Student Services – Head of Component	\$113,825.44	\$113,011.80		\$226,837.24

LEA : 101631703 Canon-McMillan SD

Printed 10/28/2016 9:28:51 AM

General Fund (10)				
2120 Guidance Services	<u>Elementary</u>	<u>Secondary</u>	<u>Federal</u>	<u>Total</u>
100 <u>Personnel Services – Salaries</u>				
100 Personnel Services – Salaries	412,114.90	449,665.24		861,780.14
Total Personnel Services – Salaries	\$412,114.90	\$449,665.24		\$861,780.14
200 <u>Personnel Services – Employee Benefits</u>				
210 Group Insurance – Contracted Provider	72,636.94	101,071.55		173,708.49
220 Social Security Contributions	31,090.91	33,938.96		65,029.87
230 PSERS Retirement Contributions	106,206.59	116,193.52		222,400.11
240 Tuition Reimbursement		3,080.00		3,080.00
260 Workers' Compensation	4,219.17	4,603.59		8,822.76
Total Personnel Services – Employee Benefits	\$214,153.61	\$258,887.62		\$473,041.23
300 <u>Purchased Professional and Technical Services</u>				
330 Other Professional Services		5,258.32		5,258.32
Total Purchased Professional and Technical Services		\$5,258.32		\$5,258.32
500 <u>Other Purchased Services</u>				
530 Communications	5,482.72	3,674.62		9,157.34
550 Printing and Binding	567.96			567.96
Total Other Purchased Services	\$6,050.68	\$3,674.62		\$9,725.30
600 <u>Supplies</u>				
610 General Supplies	3,601.35	3,274.34		6,875.69
Total Supplies	\$3,601.35	\$3,274.34		\$6,875.69
Total 2120 Guidance Services	\$635,920.54	\$720,760.14		\$1,356,680.68

LEA : 101631703 Canon-McMillan SD

Printed 10/28/2016 9:28:51 AM

General Fund (10)				
2140 Psychological Services	<u>Elementary</u>	<u>Secondary</u>	<u>Federal</u>	<u>Total</u>
300 <u>Purchased Professional and Technical Services</u>				
330 Other Professional Services	208,468.25	124,437.30		332,905.55
Total Purchased Professional and Technical Services	\$208,468.25	\$124,437.30		\$332,905.55
500 <u>Other Purchased Services</u>				
580 Travel	25.00	25.00		50.00
Total Other Purchased Services	\$25.00	\$25.00		\$50.00
600 <u>Supplies</u>				
610 General Supplies	95.14	95.13		190.27
Total Supplies	\$95.14	\$95.13		\$190.27
Total 2140 Psychological Services	\$208,588.39	\$124,557.43		\$333,145.82

LEA : 101631703 Canon-McMillan SD

Printed 10/28/2016 9:28:51 AM

General Fund (10)

2170 Student Accounting Services

Elementary Secondary Federal Total

100 <u>Personnel Services – Salaries</u>				
100 Personnel Services – Salaries				49,964.23
Total Personnel Services – Salaries				\$49,964.23
200 <u>Personnel Services – Employee Benefits</u>				
210 Group Insurance – Contracted Provider				16,281.42
220 Social Security Contributions				3,747.78
230 PSERS Retirement Contributions				11,858.42
260 Workers' Compensation				511.61
Total Personnel Services – Employee Benefits				\$32,399.23
Total 2170 Student Accounting Services				\$82,363.46

LEA : 101631703 Canon-McMillan SD

Printed 10/28/2016 9:28:51 AM

General Fund (10)

2190 Other Student Services	<u>Elementary</u>	<u>Secondary</u>	<u>Federal</u>	<u>Total</u>
300 <u>Purchased Professional and Technical Services</u>				
329 Professional Educational Services – Other	11,844.35	9,306.28		21,150.63
Total Purchased Professional and Technical Services	\$11,844.35	\$9,306.28		\$21,150.63
Total 2190 Other Student Services	\$11,844.35	\$9,306.28		\$21,150.63

LEA : 101631703 Canon-McMillan SD

Printed 10/28/2016 9:28:51 AM

General Fund (10)				
2200 Support Services – Instructional Staff	Elementary	Secondary	Federal	Total
100 Personnel Services – Salaries				
100 Personnel Services – Salaries	402,254.25	229,284.84		631,539.09
Total Personnel Services – Salaries	\$402,254.25	\$229,284.84		\$631,539.09
200 Personnel Services – Employee Benefits				
210 Group Insurance – Contracted Provider	78,523.66	44,925.10		123,448.76
220 Social Security Contributions	30,250.29	17,317.83		47,568.12
230 PSERS Retirement Contributions	103,489.35	59,247.30		162,736.65
260 Workers' Compensation	4,118.06	2,347.39		6,465.45
Total Personnel Services – Employee Benefits	\$216,381.36	\$123,837.62		\$340,218.98
300 Purchased Professional and Technical Services				
330 Other Professional Services	1,840.95	883.50		2,724.45
Total Purchased Professional and Technical Services	\$1,840.95	\$883.50		\$2,724.45
400 Purchased Property Services				
430 Repairs and Maintenance Services		622.00		622.00
Total Purchased Property Services		\$622.00		\$622.00
500 Other Purchased Services				
530 Communications	182.63	182.63		365.26
580 Travel	3,809.18	3,809.18	12,301.77	19,920.13
Total Other Purchased Services	\$3,991.81	\$3,991.81	\$12,301.77	\$20,285.39
600 Supplies				
610 General Supplies	12,610.20	6,844.09		19,454.29
630 Food	1,760.50	1,760.50		3,521.00
640 Books and Periodicals	23,726.20	24,331.64		48,057.84
650 Supplies & Fees – Technology Related	14,923.25	17,025.06		31,948.31
Total Supplies	\$53,020.15	\$49,961.29		\$102,981.44
700 Property				
750 Equipment – Original and Additional	9,752.55	8,628.62		18,381.17
Total Property	\$9,752.55	\$8,628.62		\$18,381.17
800 Other Objects				
810 Dues and Fees	745.55	745.55		1,491.10
Total Other Objects	\$745.55	\$745.55		\$1,491.10
Total 2200 Support Services – Instructional Staff	\$687,986.62	\$417,955.23	\$12,301.77	\$1,118,243.62

LEA : 101631703 Canon-McMillan SD

Printed 10/28/2016 9:28:51 AM

General Fund (10)

2220 Technology Support Services	<u>Elementary</u>	<u>Secondary</u>	<u>Federal</u>	<u>Total</u>
400 <u>Purchased Property Services</u>				
430 Repairs and Maintenance Services		622.00		622.00
Total Purchased Property Services		\$622.00		\$622.00
Total 2220 Technology Support Services		\$622.00		\$622.00

LEA : 101631703 Canon-McMillan SD

Printed 10/28/2016 9:28:51 AM

General Fund (10)

2240 Computer-Assisted Instruction Support Services	<u>Elementary</u>	<u>Secondary</u>	<u>Federal</u>	<u>Total</u>
100 <u>Personnel Services – Salaries</u>				
100 Personnel Services – Salaries	55,050.00			55,050.00
Total Personnel Services – Salaries	\$55,050.00			\$55,050.00
200 <u>Personnel Services – Employee Benefits</u>				
210 Group Insurance – Contracted Provider	5,479.44			5,479.44
220 Social Security Contributions	4,152.41			4,152.41
230 PSERS Retirement Contributions	14,225.02			14,225.02
260 Workers' Compensation	563.62			563.62
Total Personnel Services – Employee Benefits	\$24,420.49			\$24,420.49
600 <u>Supplies</u>				
610 General Supplies	4,142.41			4,142.41
Total Supplies	\$4,142.41			\$4,142.41
Total 2240 Computer-Assisted Instruction Support Services	\$83,612.90			\$83,612.90

LEA : 101631703 Canon-McMillan SD

Printed 10/28/2016 9:28:51 AM

General Fund (10)				
2250 School Library Services	<u>Elementary</u>	<u>Secondary</u>	<u>Federal</u>	<u>Total</u>
100 <u>Personnel Services – Salaries</u>				
100 Personnel Services – Salaries	220,830.00	129,279.34		350,109.34
Total Personnel Services – Salaries	\$220,830.00	\$129,279.34		\$350,109.34
200 <u>Personnel Services – Employee Benefits</u>				
210 Group Insurance – Contracted Provider	60,468.32	32,349.24		92,817.56
220 Social Security Contributions	16,526.20	9,739.62		26,265.82
230 PSERS Retirement Contributions	57,004.50	33,405.83		90,410.33
260 Workers' Compensation	2,260.63	1,323.54		3,584.17
Total Personnel Services – Employee Benefits	\$136,259.65	\$76,818.23		\$213,077.88
600 <u>Supplies</u>				
610 General Supplies	3,047.27	4,269.00		7,316.27
640 Books and Periodicals	23,495.23	24,100.67		47,595.90
650 Supplies & Fees – Technology Related	14,923.25	17,025.06		31,948.31
Total Supplies	\$41,465.75	\$45,394.73		\$86,860.48
700 <u>Property</u>				
750 Equipment – Original and Additional	4,542.01	3,418.08		7,960.09
Total Property	\$4,542.01	\$3,418.08		\$7,960.09
Total 2250 School Library Services	\$403,097.41	\$254,910.38		\$658,007.79

LEA : 101631703 Canon-McMillan SD

Printed 10/28/2016 9:28:51 AM

General Fund (10)

2260 Instruction and Curriculum Development Services	Elementary	Secondary	Federal	Total
100 Personnel Services – Salaries				
100 Personnel Services – Salaries	126,374.25	100,005.50		226,379.75
Total Personnel Services – Salaries	\$126,374.25	\$100,005.50		\$226,379.75
200 Personnel Services – Employee Benefits				
210 Group Insurance – Contracted Provider	12,575.90	12,575.86		25,151.76
220 Social Security Contributions	9,571.68	7,578.21		17,149.89
230 PSERS Retirement Contributions	32,259.83	25,841.47		58,101.30
260 Workers' Compensation	1,293.81	1,023.85		2,317.66
Total Personnel Services – Employee Benefits	\$55,701.22	\$47,019.39		\$102,720.61
300 Purchased Professional and Technical Services				
330 Other Professional Services	883.50	883.50		1,767.00
Total Purchased Professional and Technical Services	\$883.50	\$883.50		\$1,767.00
500 Other Purchased Services				
530 Communications	182.63	182.63		365.26
580 Travel	819.21	819.21		1,638.42
Total Other Purchased Services	\$1,001.84	\$1,001.84		\$2,003.68
600 Supplies				
610 General Supplies	3,498.62	653.20		4,151.82
640 Books and Periodicals	14.47	14.47		28.94
Total Supplies	\$3,513.09	\$667.67		\$4,180.76
700 Property				
750 Equipment – Original and Additional	5,210.54	5,210.54		10,421.08
Total Property	\$5,210.54	\$5,210.54		\$10,421.08
800 Other Objects				
810 Dues and Fees	745.55	745.55		1,491.10
Total Other Objects	\$745.55	\$745.55		\$1,491.10
Total 2260 Instruction and Curriculum Development Services	\$193,429.99	\$155,533.99		\$348,963.98

LEA : 101631703 Canon-McMillan SD

Printed 10/28/2016 9:28:51 AM

General Fund (10)				
2270 Instructional Staff Professional Development Services	<u>Elementary</u>	<u>Secondary</u>	<u>Federal</u>	<u>Total</u>
300 <u>Purchased Professional and Technical Services</u>				
330 Other Professional Services	957.45			957.45
Total Purchased Professional and Technical Services	\$957.45			\$957.45
500 <u>Other Purchased Services</u>				
580 Travel	2,989.97	2,989.97	12,301.77	18,281.71
Total Other Purchased Services	\$2,989.97	\$2,989.97	\$12,301.77	\$18,281.71
600 <u>Supplies</u>				
610 General Supplies	1,921.90	1,921.89		3,843.79
630 Food	1,760.50	1,760.50		3,521.00
640 Books and Periodicals	216.50	216.50		433.00
Total Supplies	\$3,898.90	\$3,898.89		\$7,797.79
Total 2270 Instructional Staff Professional Development Services	\$7,846.32	\$6,888.86	\$12,301.77	\$27,036.95

LEA : 101631703 Canon-McMillan SD

Printed 10/28/2016 9:28:51 AM

General Fund (10)				
2300 Support Services – Administration	<u>Elementary</u>	<u>Secondary</u>	<u>Federal</u>	<u>Total</u>
100 <u>Personnel Services – Salaries</u>				
100 Personnel Services – Salaries	1,137,576.34	663,349.80		2,273,231.00
Total Personnel Services – Salaries	\$1,137,576.34	\$663,349.80		\$2,273,231.00
200 <u>Personnel Services – Employee Benefits</u>				
210 Group Insurance – Contracted Provider	262,172.97	151,526.00		718,283.73
220 Social Security Contributions	85,800.05	50,121.27		169,212.21
230 PSERS Retirement Contributions	290,687.63	169,419.55		567,014.25
260 Workers' Compensation	11,647.21	6,791.54		22,849.90
290 Other Current Employee Benefits				33,559.80
Total Personnel Services – Employee Benefits	\$650,307.86	\$377,858.36		\$1,510,919.89
300 <u>Purchased Professional and Technical Services</u>				
330 Other Professional Services				340,531.82
Total Purchased Professional and Technical Services				\$340,531.82
400 <u>Purchased Property Services</u>				
430 Repairs and Maintenance Services		1,559.38		1,559.38
Total Purchased Property Services		\$1,559.38		\$1,559.38
500 <u>Other Purchased Services</u>				
520 Insurance – General				88,652.50
530 Communications	563.89	12,605.86		18,461.97
549 Other Advertising/Public Relations				2,219.06
550 Printing and Binding				2,908.65
580 Travel	11,970.95	7,394.42		44,669.39
Total Other Purchased Services	\$12,534.84	\$20,000.28		\$156,911.57
600 <u>Supplies</u>				
610 General Supplies	18,229.52	8,271.57		32,265.03
630 Food				1,121.73
640 Books and Periodicals				1,162.80
Total Supplies	\$18,229.52	\$8,271.57		\$34,549.56
700 <u>Property</u>				
750 Equipment – Original and Additional	2,113.59	2,424.63		12,601.05
Total Property	\$2,113.59	\$2,424.63		\$12,601.05
800 <u>Other Objects</u>				
810 Dues and Fees	7,975.85	4,318.50		41,626.85
890 Miscellaneous Expenditures		26,008.53		26,203.53
Total Other Objects	\$7,975.85	\$30,327.03		\$67,830.38
Total 2300 Support Services – Administration	\$1,828,738.00	\$1,103,791.05		\$4,398,134.65

LEA : 101631703 Canon-McMillan SD

Printed 10/28/2016 9:28:51 AM

General Fund (10)				
2310 Board Services				
	<u>Elementary</u>	<u>Secondary</u>	<u>Federal</u>	<u>Total</u>
100 <u>Personnel Services – Salaries</u>				
100 Personnel Services – Salaries				6,800.00
Total Personnel Services – Salaries				\$6,800.00
200 <u>Personnel Services – Employee Benefits</u>				
220 Social Security Contributions				510.92
230 PSERS Retirement Contributions				1,757.07
260 Workers’ Compensation				69.60
Total Personnel Services – Employee Benefits				\$2,337.59
500 <u>Other Purchased Services</u>				
520 Insurance – General				88,652.50
549 Other Advertising/Public Relations				2,219.06
580 Travel				14,099.12
Total Other Purchased Services				\$104,970.68
600 <u>Supplies</u>				
610 General Supplies				413.31
Total Supplies				\$413.31
800 <u>Other Objects</u>				
810 Dues and Fees				14,443.00
890 Miscellaneous Expenditures				195.00
Total Other Objects				\$14,638.00
Total 2310 Board Services				\$129,159.58

LEA : 101631703 Canon-McMillan SD

Printed 10/28/2016 9:28:51 AM

General Fund (10)				
2330 Tax Assessment and Collection Services	<u>Elementary</u>	<u>Secondary</u>	<u>Federal</u>	<u>Total</u>
100 <u>Personnel Services – Salaries</u>				
100 Personnel Services – Salaries				51,772.50
Total Personnel Services – Salaries				\$51,772.50
200 <u>Personnel Services – Employee Benefits</u>				
220 Social Security Contributions				3,960.65
260 Workers’ Compensation				105.51
Total Personnel Services – Employee Benefits				\$4,066.16
300 <u>Purchased Professional and Technical Services</u>				
330 Other Professional Services				117,526.32
Total Purchased Professional and Technical Services				\$117,526.32
500 <u>Other Purchased Services</u>				
530 Communications				5,292.22
550 Printing and Binding				2,908.65
Total Other Purchased Services				\$8,200.87
600 <u>Supplies</u>				
610 General Supplies				923.38
Total Supplies				\$923.38
Total 2330 Tax Assessment and Collection Services				\$182,489.23

LEA : 101631703 Canon-McMillan SD

Printed 10/28/2016 9:28:51 AM

General Fund (10)

2350 Legal and Accounting Services	<u>Elementary</u>	<u>Secondary</u>	<u>Federal</u>	<u>Total</u>
300 <u>Purchased Professional and Technical Services</u>				
330 Other Professional Services				222,477.50
Total Purchased Professional and Technical Services				\$222,477.50
Total 2350 Legal and Accounting Services				\$222,477.50

LEA : 101631703 Canon-McMillan SD

Printed 10/28/2016 9:28:51 AM

General Fund (10)				
2360 Office of the Superintendent / Executive Director Services	<u>Elementary</u>	<u>Secondary</u>	<u>Federal</u>	<u>Total</u>
100 <u>Personnel Services – Salaries</u>				
100 Personnel Services – Salaries				413,732.36
Total Personnel Services – Salaries				\$413,732.36
200 <u>Personnel Services – Employee Benefits</u>				
210 Group Insurance – Contracted Provider				67,779.53
220 Social Security Contributions				28,819.32
230 PSERS Retirement Contributions				105,150.00
260 Workers' Compensation				4,236.04
290 Other Current Employee Benefits				900.00
Total Personnel Services – Employee Benefits				\$206,884.89
300 <u>Purchased Professional and Technical Services</u>				
330 Other Professional Services				528.00
Total Purchased Professional and Technical Services				\$528.00
500 <u>Other Purchased Services</u>				
530 Communications	563.89	563.89		1,127.78
580 Travel				11,204.90
Total Other Purchased Services	\$563.89	\$563.89		\$12,332.68
600 <u>Supplies</u>				
610 General Supplies				4,427.25
630 Food				1,121.73
640 Books and Periodicals				1,162.80
Total Supplies				\$6,711.78
700 <u>Property</u>				
750 Equipment – Original and Additional				8,062.83
Total Property				\$8,062.83
800 <u>Other Objects</u>				
810 Dues and Fees				4,484.00
Total Other Objects				\$4,484.00
Total 2360 Office of the Superintendent / Executive Director Services	\$563.89	\$563.89		\$652,736.54

LEA : 101631703 Canon-McMillan SD

Printed 10/28/2016 9:28:51 AM

General Fund (10)					
2380 Office of the Principal Services		Elementary	Secondary	Federal	Total
100 Personnel Services – Salaries					
100 Personnel Services – Salaries		1,137,576.34	663,349.80		1,800,926.14
Total Personnel Services – Salaries		\$1,137,576.34	\$663,349.80		\$1,800,926.14
200 Personnel Services – Employee Benefits					
210 Group Insurance – Contracted Provider		262,172.97	151,526.00		413,698.97
220 Social Security Contributions		85,800.05	50,121.27		135,921.32
230 PSERS Retirement Contributions		290,687.63	169,419.55		460,107.18
260 Workers' Compensation		11,647.21	6,791.54		18,438.75
Total Personnel Services – Employee Benefits		\$650,307.86	\$377,858.36		\$1,028,166.22
400 Purchased Property Services					
430 Repairs and Maintenance Services			1,559.38		1,559.38
Total Purchased Property Services			\$1,559.38		\$1,559.38
500 Other Purchased Services					
530 Communications			12,041.97		12,041.97
580 Travel		11,970.95	7,394.42		19,365.37
Total Other Purchased Services		\$11,970.95	\$19,436.39		\$31,407.34
600 Supplies					
610 General Supplies		18,229.52	8,271.57		26,501.09
Total Supplies		\$18,229.52	\$8,271.57		\$26,501.09
700 Property					
750 Equipment – Original and Additional		2,113.59	2,424.63		4,538.22
Total Property		\$2,113.59	\$2,424.63		\$4,538.22
800 Other Objects					
810 Dues and Fees		7,975.85	4,318.50		12,294.35
890 Miscellaneous Expenditures			26,008.53		26,008.53
Total Other Objects		\$7,975.85	\$30,327.03		\$38,302.88
Total 2380 Office of the Principal Services		\$1,828,174.11	\$1,103,227.16		\$2,931,401.27

LEA : 101631703 Canon-McMillan SD

Printed 10/28/2016 9:28:51 AM

General Fund (10)

2390 Other Administration Services

Elementary Secondary Federal Total

200 Personnel Services – Employee Benefits

210 Group Insurance – Contracted Provider 236,805.23

290 Other Current Employee Benefits 32,659.80

Total Personnel Services – Employee Benefits \$269,465.03

800 Other Objects

810 Dues and Fees 10,405.50

Total Other Objects \$10,405.50

Total 2390 Other Administration Services \$279,870.53

LEA : 101631703 Canon-McMillan SD

Printed 10/28/2016 9:28:51 AM

General Fund (10)				
2400 Support Services – Pupil Health	<u>Elementary</u>	<u>Secondary</u>	<u>Federal</u>	<u>Total</u>
100 <u>Personnel Services – Salaries</u>				
100 Personnel Services – Salaries				250,176.01
Total Personnel Services – Salaries				\$250,176.01
200 <u>Personnel Services – Employee Benefits</u>				
210 Group Insurance – Contracted Provider				65,389.68
220 Social Security Contributions				18,785.79
230 PSERS Retirement Contributions				64,645.60
260 Workers' Compensation				2,561.43
Total Personnel Services – Employee Benefits				\$151,382.50
300 <u>Purchased Professional and Technical Services</u>				
322 Professional Educational Services – Ius				407,825.44
330 Other Professional Services				848,179.15
Total Purchased Professional and Technical Services				\$1,256,004.59
400 <u>Purchased Property Services</u>				
430 Repairs and Maintenance Services				517.35
Total Purchased Property Services				\$517.35
500 <u>Other Purchased Services</u>				
530 Communications				419.49
580 Travel				122.70
Total Other Purchased Services				\$542.19
600 <u>Supplies</u>				
610 General Supplies				6,889.24
650 Supplies & Fees – Technology Related				3,870.00
Total Supplies				\$10,759.24
700 <u>Property</u>				
750 Equipment – Original and Additional				478.90
Total Property				\$478.90
Total 2400 Support Services – Pupil Health				\$1,669,860.78

LEA : 101631703 Canon-McMillan SD

Printed 10/28/2016 9:28:51 AM

General Fund (10)

2420 Medical Services

Elementary Secondary Federal Total

300 Purchased Professional and Technical Services

322 Professional Educational Services – lus 407,825.44

330 Other Professional Services 532,996.29

Total Purchased Professional and Technical Services				\$940,821.73
Total 2420 Medical Services				\$940,821.73

LEA : 101631703 Canon-McMillan SD

Printed 10/28/2016 9:28:51 AM

General Fund (10)

2430 Dental Services

<u>Elementary</u>	<u>Secondary</u>	<u>Federal</u>	<u>Total</u>
-------------------	------------------	----------------	--------------

300 Purchased Professional and Technical Services

330 Other Professional Services			766.50
---------------------------------	--	--	--------

Total Purchased Professional and Technical Services			\$766.50
--	--	--	-----------------

Total 2430 Dental Services			\$766.50
-----------------------------------	--	--	-----------------

LEA : 101631703 Canon-McMillan SD

Printed 10/28/2016 9:28:51 AM

Page - 26 of 58

General Fund (10)				
2440 Nursing Services				
	<u>Elementary</u>	<u>Secondary</u>	<u>Federal</u>	<u>Total</u>
100 <u>Personnel Services – Salaries</u>				
100 Personnel Services – Salaries				250,176.01
Total Personnel Services – Salaries				\$250,176.01
200 <u>Personnel Services – Employee Benefits</u>				
210 Group Insurance – Contracted Provider				65,389.68
220 Social Security Contributions				18,785.79
230 PSERS Retirement Contributions				64,645.60
260 Workers' Compensation				2,561.43
Total Personnel Services – Employee Benefits				\$151,382.50
300 <u>Purchased Professional and Technical Services</u>				
330 Other Professional Services				314,416.36
Total Purchased Professional and Technical Services				\$314,416.36
400 <u>Purchased Property Services</u>				
430 Repairs and Maintenance Services				517.35
Total Purchased Property Services				\$517.35
500 <u>Other Purchased Services</u>				
530 Communications				419.49
580 Travel				122.70
Total Other Purchased Services				\$542.19
600 <u>Supplies</u>				
610 General Supplies				6,889.24
650 Supplies & Fees – Technology Related				3,870.00
Total Supplies				\$10,759.24
700 <u>Property</u>				
750 Equipment – Original and Additional				478.90
Total Property				\$478.90
Total 2440 Nursing Services				\$728,272.55

LEA : 101631703 Canon-McMillan SD

Printed 10/28/2016 9:28:51 AM

Page - 27 of 58

General Fund (10)				
2500 Support Services – Business	<u>Elementary</u>	<u>Secondary</u>	<u>Federal</u>	<u>Total</u>
100 <u>Personnel Services – Salaries</u>				
100 Personnel Services – Salaries				385,845.96
Total Personnel Services – Salaries				\$385,845.96
200 <u>Personnel Services – Employee Benefits</u>				
210 Group Insurance – Contracted Provider				76,846.17
220 Social Security Contributions				28,996.03
230 PSERS Retirement Contributions				99,042.61
260 Workers' Compensation				3,950.27
Total Personnel Services – Employee Benefits				\$208,835.08
300 <u>Purchased Professional and Technical Services</u>				
330 Other Professional Services				49,079.59
Total Purchased Professional and Technical Services				\$49,079.59
400 <u>Purchased Property Services</u>				
430 Repairs and Maintenance Services				380.00
440 Rentals				2,588.16
Total Purchased Property Services				\$2,968.16
500 <u>Other Purchased Services</u>				
530 Communications				6,133.68
549 Other Advertising/Public Relations				15,184.32
580 Travel				5,955.37
Total Other Purchased Services				\$27,273.37
600 <u>Supplies</u>				
610 General Supplies				37,722.28
Total Supplies				\$37,722.28
800 <u>Other Objects</u>				
810 Dues and Fees				1,021.12
Total Other Objects				\$1,021.12
Total 2500 Support Services – Business				\$712,745.56

LEA : 101631703 Canon-McMillan SD

Printed 10/28/2016 9:28:51 AM

General Fund (10)				
2510 Fiscal Services				
	<u>Elementary</u>	<u>Secondary</u>	<u>Federal</u>	<u>Total</u>
100 <u>Personnel Services – Salaries</u>				
100 Personnel Services – Salaries				364,838.92
Total Personnel Services – Salaries				\$364,838.92
200 <u>Personnel Services – Employee Benefits</u>				
210 Group Insurance – Contracted Provider				73,755.93
220 Social Security Contributions				27,430.22
230 PSERS Retirement Contributions				93,614.39
260 Workers' Compensation				3,735.20
Total Personnel Services – Employee Benefits				\$198,535.74
300 <u>Purchased Professional and Technical Services</u>				
330 Other Professional Services				49,079.59
Total Purchased Professional and Technical Services				\$49,079.59
400 <u>Purchased Property Services</u>				
430 Repairs and Maintenance Services				380.00
440 Rentals				2,588.16
Total Purchased Property Services				\$2,968.16
500 <u>Other Purchased Services</u>				
530 Communications				6,133.68
549 Other Advertising/Public Relations				15,184.32
580 Travel				5,955.37
Total Other Purchased Services				\$27,273.37
600 <u>Supplies</u>				
610 General Supplies				9,414.57
Total Supplies				\$9,414.57
800 <u>Other Objects</u>				
810 Dues and Fees				1,021.12
Total Other Objects				\$1,021.12
Total 2510 Fiscal Services				\$653,131.47

LEA : 101631703 Canon-McMillan SD

Printed 10/28/2016 9:28:51 AM

General Fund (10)				
2511 Supervision of Fiscal Services - Head of Component	<u>Elementary</u>	<u>Secondary</u>	<u>Federal</u>	<u>Total</u>
100 <u>Personnel Services – Salaries</u>				
100 Personnel Services – Salaries				166,128.05
Total Personnel Services – Salaries				\$166,128.05
200 <u>Personnel Services – Employee Benefits</u>				
210 Group Insurance – Contracted Provider				31,528.48
220 Social Security Contributions				12,530.79
230 PSERS Retirement Contributions				42,364.43
260 Workers' Compensation				1,700.83
Total Personnel Services – Employee Benefits				\$88,124.53
300 <u>Purchased Professional and Technical Services</u>				
330 Other Professional Services				49,079.59
Total Purchased Professional and Technical Services				\$49,079.59
400 <u>Purchased Property Services</u>				
430 Repairs and Maintenance Services				380.00
440 Rentals				2,588.16
Total Purchased Property Services				\$2,968.16
500 <u>Other Purchased Services</u>				
530 Communications				6,133.68
549 Other Advertising/Public Relations				15,184.32
580 Travel				5,955.37
Total Other Purchased Services				\$27,273.37
600 <u>Supplies</u>				
610 General Supplies				9,414.57
Total Supplies				\$9,414.57
800 <u>Other Objects</u>				
810 Dues and Fees				266.50
Total Other Objects				\$266.50
Total 2511 Supervision of Fiscal Services - Head of Component				\$343,254.77

LEA : 101631703 Canon-McMillan SD

Printed 10/28/2016 9:28:51 AM

General Fund (10)

2513 Receiving and Disbursing Funds Services	<u>Elementary</u>	<u>Secondary</u>	<u>Federal</u>	<u>Total</u>
100 <u>Personnel Services – Salaries</u>				
100 Personnel Services – Salaries				50,574.04
Total Personnel Services – Salaries				\$50,574.04
200 <u>Personnel Services – Employee Benefits</u>				
210 Group Insurance – Contracted Provider				5,560.74
220 Social Security Contributions				3,805.74
230 PSERS Retirement Contributions				12,971.29
260 Workers' Compensation				517.67
Total Personnel Services – Employee Benefits				\$22,855.44
Total 2513 Receiving and Disbursing Funds Services				\$73,429.48

LEA : 101631703 Canon-McMillan SD

Printed 10/28/2016 9:28:51 AM

General Fund (10)				
2514 Payroll Services	<u>Elementary</u>	<u>Secondary</u>	<u>Federal</u>	<u>Total</u>
100 <u>Personnel Services – Salaries</u>				
100 Personnel Services – Salaries				50,612.00
Total Personnel Services – Salaries				\$50,612.00
200 <u>Personnel Services – Employee Benefits</u>				
210 Group Insurance – Contracted Provider				15,768.61
220 Social Security Contributions				3,792.97
230 PSERS Retirement Contributions				13,078.16
260 Workers' Compensation				518.25
Total Personnel Services – Employee Benefits				\$33,157.99
Total 2514 Payroll Services				\$83,769.99

LEA : 101631703 Canon-McMillan SD

Printed 10/28/2016 9:28:51 AM

General Fund (10)

2515 Financial Accounting Services	<u>Elementary</u>	<u>Secondary</u>	<u>Federal</u>	<u>Total</u>
100 <u>Personnel Services – Salaries</u>				
100 Personnel Services – Salaries				97,524.83
Total Personnel Services – Salaries				\$97,524.83
200 <u>Personnel Services – Employee Benefits</u>				
210 Group Insurance – Contracted Provider				20,898.10
220 Social Security Contributions				7,300.72
230 PSERS Retirement Contributions				25,200.51
260 Workers' Compensation				998.45
Total Personnel Services – Employee Benefits				\$54,397.78
800 <u>Other Objects</u>				
810 Dues and Fees				754.62
Total Other Objects				\$754.62
Total 2515 Financial Accounting Services				\$152,677.23

LEA : 101631703 Canon-McMillan SD

Printed 10/28/2016 9:28:51 AM

General Fund (10)

2540 Printing, Publishing and Duplicating Services	<u>Elementary</u>	<u>Secondary</u>	<u>Federal</u>	<u>Total</u>
100 <u>Personnel Services – Salaries</u>				
100 Personnel Services – Salaries				21,007.04
Total Personnel Services – Salaries				\$21,007.04
200 <u>Personnel Services – Employee Benefits</u>				
210 Group Insurance – Contracted Provider				3,090.24
220 Social Security Contributions				1,565.81
230 PSERS Retirement Contributions				5,428.22
260 Workers' Compensation				215.07
Total Personnel Services – Employee Benefits				\$10,299.34
600 <u>Supplies</u>				
610 General Supplies				28,307.71
Total Supplies				\$28,307.71
Total 2540 Printing, Publishing and Duplicating Services				\$59,614.09

LEA : 101631703 Canon-McMillan SD

Printed 10/28/2016 9:28:51 AM

General Fund (10)				
2600 Operation and Maintenance of Plant Services	<u>Elementary</u>	<u>Secondary</u>	<u>Federal</u>	<u>Total</u>
100 <u>Personnel Services – Salaries</u>				
100 Personnel Services – Salaries				2,541,822.16
Total Personnel Services – Salaries				\$2,541,822.16
200 <u>Personnel Services – Employee Benefits</u>				
210 Group Insurance – Contracted Provider				533,632.93
220 Social Security Contributions				192,525.63
230 PSERS Retirement Contributions				665,495.36
250 Unemployment Compensation				975.13
260 Workers' Compensation				26,023.70
Total Personnel Services – Employee Benefits				\$1,418,652.75
300 <u>Purchased Professional and Technical Services</u>				
330 Other Professional Services				2,069.00
350 Security / Safety Services				170,535.82
Total Purchased Professional and Technical Services				\$172,604.82
400 <u>Purchased Property Services</u>				
410 Cleaning Services				126,498.35
420 Utility Services				854,314.94
430 Repairs and Maintenance Services				308,941.67
440 Rentals				13,696.16
460 Extermination Services				6,320.00
Total Purchased Property Services				\$1,309,771.12
500 <u>Other Purchased Services</u>				
521 Fire Insurance				81,992.00
523 General Property and Liability Insurance				20,797.00
529 Other Insurance				658.15
530 Communications				50,359.72
580 Travel				3,060.30
Total Other Purchased Services				\$156,867.17
600 <u>Supplies</u>				
610 General Supplies	158,440.94	178,749.19		337,190.13
620 Energy				254,727.88
Total Supplies	\$158,440.94	\$178,749.19		\$591,918.01
700 <u>Property</u>				
750 Equipment – Original and Additional				15,711.17
760 Equipment – Replacement				55,222.05
Total Property				\$70,933.22
800 <u>Other Objects</u>				
810 Dues and Fees				3,027.00
Total Other Objects				\$3,027.00
Total 2600 Operation and Maintenance of Plant Services	\$158,440.94	\$178,749.19		\$6,265,596.25

LEA : 101631703 Canon-McMillan SD

Printed 10/28/2016 9:28:51 AM

General Fund (10)				
2610 Supervision of Operation and Maintenance of Plant Services	<u>Elementary</u>	<u>Secondary</u>	<u>Federal</u>	<u>Total</u>
100 <u>Personnel Services – Salaries</u>				
100 Personnel Services – Salaries				156,828.86
Total Personnel Services – Salaries				\$156,828.86
200 <u>Personnel Services – Employee Benefits</u>				
210 Group Insurance – Contracted Provider				45,704.27
220 Social Security Contributions				11,831.56
230 PSERS Retirement Contributions				40,634.52
250 Unemployment Compensation				77.52
260 Workers' Compensation				1,605.66
Total Personnel Services – Employee Benefits				\$99,853.53
500 <u>Other Purchased Services</u>				
580 Travel				769.69
Total Other Purchased Services				\$769.69
600 <u>Supplies</u>				
610 General Supplies	366.69	366.69		733.38
Total Supplies	\$366.69	\$366.69		\$733.38
Total 2610 Supervision of Operation and Maintenance of Plant Services	\$366.69	\$366.69		\$258,185.46

LEA : 101631703 Canon-McMillan SD

Printed 10/28/2016 9:28:51 AM

General Fund (10)				
2611 Supervision of Operation and Maintenance of Plant Services – Head of Component	<u>Elementary</u>	<u>Secondary</u>	<u>Federal</u>	<u>Total</u>
100 <u>Personnel Services – Salaries</u>				
100 Personnel Services – Salaries				156,828.86
Total Personnel Services – Salaries				\$156,828.86
200 <u>Personnel Services – Employee Benefits</u>				
210 Group Insurance – Contracted Provider				45,704.27
220 Social Security Contributions				11,831.56
230 PSERS Retirement Contributions				40,634.52
250 Unemployment Compensation				77.52
260 Workers' Compensation				1,605.66
Total Personnel Services – Employee Benefits				\$99,853.53
500 <u>Other Purchased Services</u>				
580 Travel				769.69
Total Other Purchased Services				\$769.69
600 <u>Supplies</u>				
610 General Supplies	366.69	366.69		733.38
Total Supplies	\$366.69	\$366.69		\$733.38
Total 2611 Supervision of Operation and Maintenance of Plant Services – Head of Component	\$366.69	\$366.69		\$258,185.46

LEA : 101631703 Canon-McMillan SD

Printed 10/28/2016 9:28:51 AM

General Fund (10)				
2620 Operation of Buildings Services	<u>Elementary</u>	<u>Secondary</u>	<u>Federal</u>	<u>Total</u>
100 <u>Personnel Services – Salaries</u>				
100 Personnel Services – Salaries				2,384,993.30
Total Personnel Services – Salaries				\$2,384,993.30
200 <u>Personnel Services – Employee Benefits</u>				
210 Group Insurance – Contracted Provider				487,928.66
220 Social Security Contributions				180,694.07
230 PSERS Retirement Contributions				624,860.84
250 Unemployment Compensation				897.61
260 Workers' Compensation				24,418.04
Total Personnel Services – Employee Benefits				\$1,318,799.22
300 <u>Purchased Professional and Technical Services</u>				
330 Other Professional Services				2,069.00
Total Purchased Professional and Technical Services				\$2,069.00
400 <u>Purchased Property Services</u>				
410 Cleaning Services				44,252.92
420 Utility Services				827,369.74
430 Repairs and Maintenance Services				288,160.53
440 Rentals				13,696.16
460 Extermination Services				6,320.00
Total Purchased Property Services				\$1,179,799.35
500 <u>Other Purchased Services</u>				
521 Fire Insurance				81,992.00
523 General Property and Liability Insurance				20,797.00
529 Other Insurance				658.15
530 Communications				50,359.72
580 Travel				2,290.61
Total Other Purchased Services				\$156,097.48
600 <u>Supplies</u>				
610 General Supplies	151,754.16	172,062.41		323,816.57
620 Energy				237,379.19
Total Supplies	\$151,754.16	\$172,062.41		\$561,195.76
700 <u>Property</u>				
750 Equipment – Original and Additional				15,711.17
760 Equipment – Replacement				15,845.05
Total Property				\$31,556.22
800 <u>Other Objects</u>				
810 Dues and Fees				3,027.00
Total Other Objects				\$3,027.00
Total 2620 Operation of Buildings Services	\$151,754.16	\$172,062.41		\$5,637,537.33

LEA : 101631703 Canon-McMillan SD

Printed 10/28/2016 9:28:51 AM

General Fund (10)				
2630 Care and Upkeep of Grounds Services	<u>Elementary</u>	<u>Secondary</u>	<u>Federal</u>	<u>Total</u>
400 <u>Purchased Property Services</u>				
410 Cleaning Services				82,245.43
420 Utility Services				26,945.20
430 Repairs and Maintenance Services				6,318.42
Total Purchased Property Services				\$115,509.05
600 <u>Supplies</u>				
610 General Supplies	5,586.28	5,586.28		11,172.56
620 Energy				2,627.09
Total Supplies	\$5,586.28	\$5,586.28		\$13,799.65
Total 2630 Care and Upkeep of Grounds Services	\$5,586.28	\$5,586.28		\$129,308.70

LEA : 101631703 Canon-McMillan SD

Printed 10/28/2016 9:28:51 AM

General Fund (10)

2640 Care and Upkeep of Equipment Services	<u>Elementary</u>	<u>Secondary</u>	<u>Federal</u>	<u>Total</u>
400 <u>Purchased Property Services</u>				
430 Repairs and Maintenance Services				5,844.97
Total Purchased Property Services				\$5,844.97
Total 2640 Care and Upkeep of Equipment Services				\$5,844.97

LEA : 101631703 Canon-McMillan SD

Printed 10/28/2016 9:28:51 AM

General Fund (10)

2650 Vehicle Operation and Maintenance Services (Other Than Student Transportation Vehicles)	<u>Elementary</u>	<u>Secondary</u>	<u>Federal</u>	<u>Total</u>
600 <u>Supplies</u>				
610 General Supplies	464.20	464.20		928.40
620 Energy				14,721.60
Total Supplies	\$464.20	\$464.20		\$15,650.00
700 <u>Property</u>				
760 Equipment – Replacement				39,377.00
Total Property				\$39,377.00
Total 2650 Vehicle Operation and Maintenance Services (Other Than Student Transportation Vehicles)	\$464.20	\$464.20		\$55,027.00

LEA : 101631703 Canon-McMillan SD

Printed 10/28/2016 9:28:51 AM

General Fund (10)				
2660 Safety and Security Services	<u>Elementary</u>	<u>Secondary</u>	<u>Federal</u>	<u>Total</u>
300 <u>Purchased Professional and Technical Services</u>				
350 Security / Safety Services				170,535.82
Total Purchased Professional and Technical Services				\$170,535.82
400 <u>Purchased Property Services</u>				
430 Repairs and Maintenance Services				8,617.75
Total Purchased Property Services				\$8,617.75
600 <u>Supplies</u>				
610 General Supplies	269.61	269.61		539.22
Total Supplies	\$269.61	\$269.61		\$539.22
Total 2660 Safety and Security Services	\$269.61	\$269.61		\$179,692.79

LEA : 101631703 Canon-McMillan SD

Printed 10/28/2016 9:28:51 AM

General Fund (10)				
2700 Student Transportation Services	<u>Elementary</u>	<u>Secondary</u>	<u>Federal</u>	<u>Total</u>
100 <u>Personnel Services – Salaries</u>				
100 Personnel Services – Salaries				1,678,428.22
Total Personnel Services – Salaries				\$1,678,428.22
200 <u>Personnel Services – Employee Benefits</u>				
210 Group Insurance – Contracted Provider				607,371.15
220 Social Security Contributions				126,241.14
230 PSERS Retirement Contributions				422,879.49
250 Unemployment Compensation				613.20
260 Workers' Compensation				17,184.14
Total Personnel Services – Employee Benefits				\$1,174,289.12
300 <u>Purchased Professional and Technical Services</u>				
330 Other Professional Services				5,221.41
Total Purchased Professional and Technical Services				\$5,221.41
400 <u>Purchased Property Services</u>				
410 Cleaning Services				2,331.20
Total Purchased Property Services				\$2,331.20
500 <u>Other Purchased Services</u>				
513 Contracted Carriers				2,006,591.92
516 Student Transportation Services From the IU				45,317.42
522 Automotive Liability Insurance				44,525.00
530 Communications				519.78
580 Travel				1,356.37
Total Other Purchased Services				\$2,098,310.49
600 <u>Supplies</u>				
610 General Supplies				113,805.62
620 Energy				187,883.90
Total Supplies				\$301,689.52
700 <u>Property</u>				
760 Equipment – Replacement				354,163.00
Total Property				\$354,163.00
800 <u>Other Objects</u>				
810 Dues and Fees				4,031.00
890 Miscellaneous Expenditures				4,062.45
Total Other Objects				\$8,093.45
Total 2700 Student Transportation Services				\$5,622,526.41

LEA : 101631703 Canon-McMillan SD

Printed 10/28/2016 9:28:51 AM

General Fund (10)				
2710 Supervision of Student Transportation Services	<u>Elementary</u>	<u>Secondary</u>	<u>Federal</u>	<u>Total</u>
100 <u>Personnel Services – Salaries</u>				
100 Personnel Services – Salaries				128,288.61
Total Personnel Services – Salaries				\$128,288.61
200 <u>Personnel Services – Employee Benefits</u>				
210 Group Insurance – Contracted Provider				37,628.09
220 Social Security Contributions				9,703.33
230 PSERS Retirement Contributions				33,947.00
250 Unemployment Compensation				100.10
260 Workers' Compensation				1,313.26
Total Personnel Services – Employee Benefits				\$82,691.78
500 <u>Other Purchased Services</u>				
516 Student Transportation Services From the IU				45,317.42
580 Travel				1,356.37
Total Other Purchased Services				\$46,673.79
800 <u>Other Objects</u>				
810 Dues and Fees				6.00
Total Other Objects				\$6.00
Total 2710 Supervision of Student Transportation Services				\$257,660.18

LEA : 101631703 Canon-McMillan SD

Printed 10/28/2016 9:28:51 AM

General Fund (10)				
2711 Supervision of Student Transportation Services – Head of Component	<u>Elementary</u>	<u>Secondary</u>	<u>Federal</u>	<u>Total</u>
100 <u>Personnel Services – Salaries</u>				
100 Personnel Services – Salaries				128,288.61
Total Personnel Services – Salaries				\$128,288.61
200 <u>Personnel Services – Employee Benefits</u>				
210 Group Insurance – Contracted Provider				37,628.09
220 Social Security Contributions				9,703.33
230 PSERS Retirement Contributions				33,947.00
250 Unemployment Compensation				100.10
260 Workers' Compensation				1,313.26
Total Personnel Services – Employee Benefits				\$82,691.78
500 <u>Other Purchased Services</u>				
516 Student Transportation Services From the IU				45,317.42
580 Travel				1,356.37
Total Other Purchased Services				\$46,673.79
800 <u>Other Objects</u>				
810 Dues and Fees				6.00
Total Other Objects				\$6.00
Total 2711 Supervision of Student Transportation Services – Head of Component				\$257,660.18

LEA : 101631703 Canon-McMillan SD

Printed 10/28/2016 9:28:51 AM

General Fund (10)				
2720 Vehicle Operation Services				
	<u>Elementary</u>	<u>Secondary</u>	<u>Federal</u>	<u>Total</u>
100 <u>Personnel Services – Salaries</u>				
100 Personnel Services – Salaries				1,312,103.21
Total Personnel Services – Salaries				\$1,312,103.21
200 <u>Personnel Services – Employee Benefits</u>				
210 Group Insurance – Contracted Provider				505,400.50
220 Social Security Contributions				98,499.61
230 PSERS Retirement Contributions				327,437.87
250 Unemployment Compensation				513.10
260 Workers' Compensation				13,433.82
Total Personnel Services – Employee Benefits				\$945,284.90
300 <u>Purchased Professional and Technical Services</u>				
330 Other Professional Services				5,221.41
Total Purchased Professional and Technical Services				\$5,221.41
400 <u>Purchased Property Services</u>				
410 Cleaning Services				2,331.20
Total Purchased Property Services				\$2,331.20
500 <u>Other Purchased Services</u>				
513 Contracted Carriers				682,312.72
522 Automotive Liability Insurance				44,525.00
530 Communications				519.78
Total Other Purchased Services				\$727,357.50
600 <u>Supplies</u>				
610 General Supplies				113,805.62
620 Energy				187,883.90
Total Supplies				\$301,689.52
700 <u>Property</u>				
760 Equipment – Replacement				354,163.00
Total Property				\$354,163.00
800 <u>Other Objects</u>				
810 Dues and Fees				4,025.00
890 Miscellaneous Expenditures				4,062.45
Total Other Objects				\$8,087.45
Total 2720 Vehicle Operation Services				\$3,656,238.19

LEA : 101631703 Canon-McMillan SD

Printed 10/28/2016 9:28:51 AM

General Fund (10)

2740 Vehicle Servicing and Maintenance Services	<u>Elementary</u>	<u>Secondary</u>	<u>Federal</u>	<u>Total</u>
100 <u>Personnel Services – Salaries</u>				
100 Personnel Services – Salaries				238,036.40
Total Personnel Services – Salaries				\$238,036.40
200 <u>Personnel Services – Employee Benefits</u>				
210 Group Insurance – Contracted Provider				64,342.56
220 Social Security Contributions				18,038.20
230 PSERS Retirement Contributions				61,494.62
260 Workers' Compensation				2,437.06
Total Personnel Services – Employee Benefits				\$146,312.44
Total 2740 Vehicle Servicing and Maintenance Services				\$384,348.84

LEA : 101631703 Canon-McMillan SD

Printed 10/28/2016 9:28:51 AM

General Fund (10)

2750 Nonpublic Transportation	<u>Elementary</u>	<u>Secondary</u>	<u>Federal</u>	<u>Total</u>
500 <u>Other Purchased Services</u>				
513 Contracted Carriers				1,324,279.20
Total Other Purchased Services				\$1,324,279.20
Total 2750 Nonpublic Transportation				\$1,324,279.20

LEA : 101631703 Canon-McMillan SD

Printed 10/28/2016 9:28:51 AM

General Fund (10)					
2800 Support Services – Central		Elementary	Secondary	Federal	Total
100 <u>Personnel Services – Salaries</u>					
100 Personnel Services – Salaries				7,076.64	350,970.54
Total Personnel Services – Salaries				\$7,076.64	\$350,970.54
200 <u>Personnel Services – Employee Benefits</u>					
210 Group Insurance – Contracted Provider					73,374.87
220 Social Security Contributions				527.02	26,307.86
230 PSERS Retirement Contributions				1,828.64	90,690.93
240 Tuition Reimbursement					10,098.00
260 Workers' Compensation				72.50	3,593.56
Total Personnel Services – Employee Benefits				\$2,428.16	\$204,065.22
300 <u>Purchased Professional and Technical Services</u>					
330 Other Professional Services					75,142.97
Total Purchased Professional and Technical Services					\$75,142.97
400 <u>Purchased Property Services</u>					
430 Repairs and Maintenance Services					949.86
440 Rentals					168,454.38
Total Purchased Property Services					\$169,404.24
500 <u>Other Purchased Services</u>					
530 Communications					162,539.96
580 Travel				141.16	2,855.53
Total Other Purchased Services				\$141.16	\$165,395.49
600 <u>Supplies</u>					
610 General Supplies				100.00	54,915.75
650 Supplies & Fees – Technology Related					39,198.62
Total Supplies				\$100.00	\$94,114.37
700 <u>Property</u>					
750 Equipment – Original and Additional					230,078.23
Total Property					\$230,078.23
800 <u>Other Objects</u>					
810 Dues and Fees					409.00
Total Other Objects					\$409.00
Total 2800 Support Services – Central				\$9,745.96	\$1,289,580.06

LEA : 101631703 Canon-McMillan SD

Printed 10/28/2016 9:28:51 AM

General Fund (10)				
2810 Planning, Research, Development and Evaluation Services	<u>Elementary</u>	<u>Secondary</u>	<u>Federal</u>	<u>Total</u>
100 <u>Personnel Services – Salaries</u>				
100 Personnel Services – Salaries				213,045.78
Total Personnel Services – Salaries				\$213,045.78
200 <u>Personnel Services – Employee Benefits</u>				
210 Group Insurance – Contracted Provider				40,296.24
220 Social Security Contributions				15,985.84
230 PSERS Retirement Contributions				55,051.05
240 Tuition Reimbursement				10,098.00
260 Workers' Compensation				2,181.26
Total Personnel Services – Employee Benefits				\$123,612.39
400 <u>Purchased Property Services</u>				
430 Repairs and Maintenance Services				949.86
440 Rentals				168,454.38
Total Purchased Property Services				\$169,404.24
500 <u>Other Purchased Services</u>				
530 Communications				162,124.26
580 Travel				1,936.13
Total Other Purchased Services				\$164,060.39
600 <u>Supplies</u>				
610 General Supplies				54,432.78
650 Supplies & Fees – Technology Related				39,198.62
Total Supplies				\$93,631.40
700 <u>Property</u>				
750 Equipment – Original and Additional				229,778.24
Total Property				\$229,778.24
Total 2810 Planning, Research, Development and Evaluation Services				\$993,532.44

LEA : 101631703 Canon-McMillan SD

Printed 10/28/2016 9:28:51 AM

General Fund (10)

2820 Information Services

<u>Elementary</u>	<u>Secondary</u>	<u>Federal</u>	<u>Total</u>
-------------------	------------------	----------------	--------------

300 Purchased Professional and Technical Services

330 Other Professional Services			49,741.45
---------------------------------	--	--	-----------

Total Purchased Professional and Technical Services			\$49,741.45
--	--	--	--------------------

Total 2820 Information Services			\$49,741.45
--	--	--	--------------------

LEA : 101631703 Canon-McMillan SD

Printed 10/28/2016 9:28:51 AM

General Fund (10)

2823 Public Information Services

Elementary Secondary Federal Total

300 Purchased Professional and Technical Services

330 Other Professional Services 49,741.45

Total Purchased Professional and Technical Services \$49,741.45

Total 2823 Public Information Services \$49,741.45

LEA : 101631703 Canon-McMillan SD

Printed 10/28/2016 9:28:51 AM

General Fund (10)				
2830 Staff Services				
	<u>Elementary</u>	<u>Secondary</u>	<u>Federal</u>	<u>Total</u>
100 <u>Personnel Services – Salaries</u>				
100 Personnel Services – Salaries				130,848.12
Total Personnel Services – Salaries				\$130,848.12
200 <u>Personnel Services – Employee Benefits</u>				
210 Group Insurance – Contracted Provider				33,078.63
220 Social Security Contributions				9,795.00
230 PSERS Retirement Contributions				33,811.24
260 Workers' Compensation				1,339.80
Total Personnel Services – Employee Benefits				\$78,024.67
300 <u>Purchased Professional and Technical Services</u>				
330 Other Professional Services				25,401.52
Total Purchased Professional and Technical Services				\$25,401.52
500 <u>Other Purchased Services</u>				
530 Communications				415.70
580 Travel				778.24
Total Other Purchased Services				\$1,193.94
600 <u>Supplies</u>				
610 General Supplies				382.97
Total Supplies				\$382.97
700 <u>Property</u>				
750 Equipment – Original and Additional				299.99
Total Property				\$299.99
800 <u>Other Objects</u>				
810 Dues and Fees				409.00
Total Other Objects				\$409.00
Total 2830 Staff Services				\$236,560.21

LEA : 101631703 Canon-McMillan SD

Printed 10/28/2016 9:28:51 AM

General Fund (10)					
2831 Supervision of Staff Services		<u>Elementary</u>	<u>Secondary</u>	<u>Federal</u>	<u>Total</u>
100 <u>Personnel Services – Salaries</u>					
100 Personnel Services – Salaries					130,848.12
Total Personnel Services – Salaries					\$130,848.12
200 <u>Personnel Services – Employee Benefits</u>					
210 Group Insurance – Contracted Provider					33,078.63
220 Social Security Contributions					9,795.00
230 PSERS Retirement Contributions					33,811.24
260 Workers' Compensation					1,339.80
Total Personnel Services – Employee Benefits					\$78,024.67
500 <u>Other Purchased Services</u>					
530 Communications					415.70
580 Travel					778.24
Total Other Purchased Services					\$1,193.94
600 <u>Supplies</u>					
610 General Supplies					382.97
Total Supplies					\$382.97
700 <u>Property</u>					
750 Equipment – Original and Additional					299.99
Total Property					\$299.99
800 <u>Other Objects</u>					
810 Dues and Fees					409.00
Total Other Objects					\$409.00
Total 2831 Supervision of Staff Services					\$211,158.69

LEA : 101631703 Canon-McMillan SD

Printed 10/28/2016 9:28:51 AM

General Fund (10)

2832 Recruitment and Placement Services

Elementary

Secondary

Federal

Total

300 Purchased Professional and Technical Services

330 Other Professional Services

25,401.52

Total Purchased Professional and Technical Services

\$25,401.52

Total 2832 Recruitment and Placement Services

\$25,401.52

LEA : 101631703 Canon-McMillan SD

Printed 10/28/2016 9:28:51 AM

General Fund (10)				
2850 State and Federal Agency Liaison Services	<u>Elementary</u>	<u>Secondary</u>	<u>Federal</u>	<u>Total</u>
100 <u>Personnel Services – Salaries</u>				
100 Personnel Services – Salaries			7,076.64	7,076.64
Total Personnel Services – Salaries			\$7,076.64	\$7,076.64
200 <u>Personnel Services – Employee Benefits</u>				
220 Social Security Contributions			527.02	527.02
230 PSERS Retirement Contributions			1,828.64	1,828.64
260 Workers’ Compensation			72.50	72.50
Total Personnel Services – Employee Benefits			\$2,428.16	\$2,428.16
500 <u>Other Purchased Services</u>				
580 Travel			141.16	141.16
Total Other Purchased Services			\$141.16	\$141.16
600 <u>Supplies</u>				
610 General Supplies			100.00	100.00
Total Supplies			\$100.00	\$100.00
Total 2850 State and Federal Agency Liaison Services			\$9,745.96	\$9,745.96

LEA : 101631703 Canon-McMillan SD

Printed 10/28/2016 9:28:51 AM

General Fund (10)

2900 Other Support Services	<u>Elementary</u>	<u>Secondary</u>	<u>Federal</u>	<u>Total</u>
500 <u>Other Purchased Services</u>				
595 IU Payments By Withholding				77,445.19
Total Other Purchased Services				\$77,445.19
800 <u>Other Objects</u>				
899 Pass-Through Funds				669,769.07
Total Other Objects				\$669,769.07
Total 2900 Other Support Services				\$747,214.26

LEA : 101631703 Canon-McMillan SD

Printed 10/28/2016 9:28:51 AM

General Fund (10)

2910 Support Services Not Listed Elsewhere In the 2000 Series

Elementary Secondary Federal Total

500 Other Purchased Services

595 IU Payments By Withholding 77,445.19

Total Other Purchased Services \$77,445.19

Total 2910 Support Services Not Listed Elsewhere In the 2000 Series \$77,445.19

LEA : 101631703 Canon-McMillan SD

Printed 10/28/2016 9:28:51 AM

General Fund (10)

2990 Pass-Through Funds

Elementary Secondary Federal Total

800 Other Objects

899 Pass-Through Funds 669,769.07

Total Other Objects \$669,769.07

Total 2990 Pass-Through Funds \$669,769.07

LEA : 101631703 Canon-McMillan SD

Printed 10/28/2016 9:28:54 AM

General Fund (10)	
3000 Operation of Non-Instructional Services	<u>Total</u>
100 <u>Personnel Services – Salaries</u>	
100 Personnel Services – Salaries	838,217.06
Total Personnel Services – Salaries	\$838,217.06
200 <u>Personnel Services – Employee Benefits</u>	
210 Group Insurance – Contracted Provider	18,528.08
220 Social Security Contributions	63,365.07
230 PSERS Retirement Contributions	188,708.03
250 Unemployment Compensation	1,999.49
260 Workers’ Compensation	8,527.76
Total Personnel Services – Employee Benefits	\$281,128.43
300 <u>Purchased Professional and Technical Services</u>	
330 Other Professional Services	(20,835.92)
350 Security / Safety Services	15,398.85
390 Other Purchased Professional and Technical Services	40,815.00
Total Purchased Professional and Technical Services	\$35,377.93
400 <u>Purchased Property Services</u>	
410 Cleaning Services	4,432.35
430 Repairs and Maintenance Services	43,960.45
440 Rentals	950.00
Total Purchased Property Services	\$49,342.80
500 <u>Other Purchased Services</u>	
580 Travel	36,837.24
Total Other Purchased Services	\$36,837.24
600 <u>Supplies</u>	
610 General Supplies	114,696.73
640 Books and Periodicals	282.00
Total Supplies	\$114,978.73
700 <u>Property</u>	
750 Equipment – Original and Additional	76,118.25
760 Equipment – Replacement	8,501.09
Total Property	\$84,619.34
800 <u>Other Objects</u>	
810 Dues and Fees	85,289.20
860 Grants To Municipal and Community Service Organizations	122,594.00
890 Miscellaneous Expenditures	5,611.70
Total Other Objects	\$213,494.90
Total 3000 Operation of Non-Instructional Services	\$1,653,996.43

LEA : 101631703 Canon-McMillan SD

Printed 10/28/2016 9:28:54 AM

General Fund (10)				
3200 Student Activities	<u>Elementary</u>	<u>Secondary</u>	<u>Federal</u>	<u>Total</u>
100 <u>Personnel Services – Salaries</u>				
100 Personnel Services – Salaries				832,842.06
Total Personnel Services – Salaries				\$832,842.06
200 <u>Personnel Services – Employee Benefits</u>				
210 Group Insurance – Contracted Provider				18,528.08
220 Social Security Contributions				62,959.07
230 PSERS Retirement Contributions				187,319.14
250 Unemployment Compensation				1,999.49
260 Workers' Compensation				8,472.81
Total Personnel Services – Employee Benefits				\$279,278.59
300 <u>Purchased Professional and Technical Services</u>				
330 Other Professional Services				32,373.22
350 Security / Safety Services				15,398.85
390 Other Purchased Professional and Technical Services				40,815.00
Total Purchased Professional and Technical Services				\$88,587.07
400 <u>Purchased Property Services</u>				
410 Cleaning Services				4,432.35
430 Repairs and Maintenance Services				43,960.45
440 Rentals				950.00
Total Purchased Property Services				\$49,342.80
500 <u>Other Purchased Services</u>				
580 Travel				36,397.24
Total Other Purchased Services				\$36,397.24
600 <u>Supplies</u>				
610 General Supplies				100,942.03
640 Books and Periodicals				282.00
Total Supplies				\$101,224.03
700 <u>Property</u>				
750 Equipment – Original and Additional				76,118.25
760 Equipment – Replacement				8,501.09
Total Property				\$84,619.34
800 <u>Other Objects</u>				
810 Dues and Fees				53,031.25
890 Miscellaneous Expenditures				5,611.70
Total Other Objects				\$58,642.95
Total 3200 Student Activities				\$1,530,934.08

LEA : 101631703 Canon-McMillan SD

Printed 10/28/2016 9:28:54 AM

General Fund (10)				
3300 Community Services	<u>Elementary</u>	<u>Secondary</u>	<u>Federal</u>	<u>Total</u>
100 <u>Personnel Services – Salaries</u>				
100 Personnel Services – Salaries				5,375.00
Total Personnel Services – Salaries				\$5,375.00
200 <u>Personnel Services – Employee Benefits</u>				
220 Social Security Contributions				406.00
230 PSERS Retirement Contributions				1,388.89
260 Workers’ Compensation				54.95
Total Personnel Services – Employee Benefits				\$1,849.84
300 <u>Purchased Professional and Technical Services</u>				
330 Other Professional Services				(53,209.14)
Total Purchased Professional and Technical Services				(\$53,209.14)
500 <u>Other Purchased Services</u>				
580 Travel			440.00	440.00
Total Other Purchased Services			\$440.00	\$440.00
600 <u>Supplies</u>				
610 General Supplies			28.35	13,754.70
Total Supplies			\$28.35	\$13,754.70
800 <u>Other Objects</u>				
810 Dues and Fees				32,257.95
860 Grants To Municipal and Community Service Organizations				122,594.00
Total Other Objects				\$154,851.95
Total 3300 Community Services			\$468.35	\$123,062.35

LEA : 101631703 Canon-McMillan SD

Printed 10/28/2016 9:28:55 AM

General Fund (10)

4000 Facilities Acquisition, Construction and Improvement Services		<u>Total</u>
300 <u>Purchased Professional and Technical Services</u>		
330 Other Professional Services		124,498.00
Total Purchased Professional and Technical Services		\$124,498.00
400 <u>Purchased Property Services</u>		
430 Repairs and Maintenance Services		201,682.05
Total Purchased Property Services		\$201,682.05
700 <u>Property</u>		
710 Land and Improvements		378,423.00
760 Equipment – Replacement		334,718.65
780 Infrastructure Assets		(800.00)
Total Property		\$712,341.65
Total 4000 Facilities Acquisition, Construction and Improvement Services		\$1,038,521.70

LEA : 101631703 Canon-McMillan SD

Printed 10/28/2016 9:28:55 AM

General Fund (10)

4200 Existing Site Improvement Services	<u>Elementary</u>	<u>Secondary</u>	<u>Federal</u>	<u>Total</u>
300 <u>Purchased Professional and Technical Services</u>				
330 Other Professional Services				5,582.50
Total Purchased Professional and Technical Services				\$5,582.50
700 <u>Property</u>				
710 Land and Improvements				378,423.00
Total Property				\$378,423.00
Total 4200 Existing Site Improvement Services				\$384,005.50

LEA : 101631703 Canon-McMillan SD

Printed 10/28/2016 9:28:55 AM

General Fund (10)

4300 Architecture and Engineering Services / Educational Specifications Development – Original and Additional	<u>Elementary</u>	<u>Secondary</u>	<u>Federal</u>	<u>Total</u>
300 <u>Purchased Professional and Technical Services</u>				
330 Other Professional Services				65,792.50
Total Purchased Professional and Technical Services				\$65,792.50
Total 4300 Architecture and Engineering Services / Educational Specifications Development – Original and Additional				\$65,792.50

LEA : 101631703 Canon-McMillan SD

Printed 10/28/2016 9:28:55 AM

General Fund (10)

4600 Existing Building Improvement Services	<u>Elementary</u>	<u>Secondary</u>	<u>Federal</u>	<u>Total</u>
300 <u>Purchased Professional and Technical Services</u>				
330 Other Professional Services				53,123.00
Total Purchased Professional and Technical Services				\$53,123.00
400 <u>Purchased Property Services</u>				
430 Repairs and Maintenance Services				201,682.05
Total Purchased Property Services				\$201,682.05
700 <u>Property</u>				
760 Equipment – Replacement				334,718.65
780 Infrastructure Assets				(800.00)
Total Property				\$333,918.65
Total 4600 Existing Building Improvement Services				\$588,723.70

LEA : 101631703 Canon-McMillan SD

Printed 10/28/2016 9:28:57 AM

General Fund (10)

5000 Other Expenditures and Financing Uses		<u>Total</u>
800 <u>Other Objects</u>		
830 Interest		3,397,244.51
880 Refunds of Prior Years' Receipts		583,410.18
Total Other Objects		\$3,980,654.69
900 <u>Other Uses of Funds</u>		
910 Redemption of Principal		4,385,000.00
930 Fund Transfers		48,628.00
932 Capital Reserve Fund Transfers Applicable To Fund 32		275,000.00
Total Other Uses of Funds		\$4,708,628.00
Total 5000 Other Expenditures and Financing Uses		\$8,689,282.69

LEA : 101631703 Canon-McMillan SD

Printed 10/28/2016 9:28:57 AM

General Fund (10)

5100 Debt Service / Other Expenditures and Financing Uses	<u>Elementary</u>	<u>Secondary</u>	<u>Federal</u>	<u>Total</u>
800 <u>Other Objects</u>				
830 Interest				3,397,244.51
880 Refunds of Prior Years' Receipts				583,410.18
Total Other Objects				\$3,980,654.69
900 <u>Other Uses of Funds</u>				
910 Redemption of Principal				4,385,000.00
Total Other Uses of Funds				\$4,385,000.00
Total 5100 Debt Service / Other Expenditures and Financing Uses				\$8,365,654.69

LEA : 101631703 Canon-McMillan SD

Printed 10/28/2016 9:28:57 AM

General Fund (10)				
5110 Debt Service	<u>Elementary</u>	<u>Secondary</u>	<u>Federal</u>	<u>Total</u>
800 <u>Other Objects</u>				
830 Interest				3,397,244.51
Total Other Objects				\$3,397,244.51
900 <u>Other Uses of Funds</u>				
910 Redemption of Principal				4,385,000.00
Total Other Uses of Funds				\$4,385,000.00
Total 5110 Debt Service				\$7,782,244.51

LEA : 101631703 Canon-McMillan SD

Printed 10/28/2016 9:28:57 AM

General Fund (10)

5130 Refund of Prior Year Revenues / Receipts	<u>Elementary</u>	<u>Secondary</u>	<u>Federal</u>	<u>Total</u>
800 <u>Other Objects</u>				
880 Refunds of Prior Years' Receipts				583,410.18
Total Other Objects				\$583,410.18
Total 5130 Refund of Prior Year Revenues / Receipts				\$583,410.18

LEA : 101631703 Canon-McMillan SD

Printed 10/28/2016 9:28:57 AM

General Fund (10)

5200 Interfund Transfers – Out	<u>Elementary</u>	<u>Secondary</u>	<u>Federal</u>	<u>Total</u>
900 <u>Other Uses of Funds</u>				
930 Fund Transfers				48,628.00
932 Capital Reserve Fund Transfers Applicable To Fund 32				275,000.00
Total Other Uses of Funds				\$323,628.00
Total 5200 Interfund Transfers – Out				\$323,628.00

LEA : 101631703 Canon-McMillan SD

Printed 10/28/2016 9:28:57 AM

General Fund (10)

5230 Capital Projects Fund Transfers	<u>Elementary</u>	<u>Secondary</u>	<u>Federal</u>	<u>Total</u>
900 <u>Other Uses of Funds</u>				
932 Capital Reserve Fund Transfers Applicable To Fund 32				275,000.00
Total Other Uses of Funds				\$275,000.00
Total 5230 Capital Projects Fund Transfers				\$275,000.00

LEA : 101631703 Canon-McMillan SD

Printed 10/28/2016 9:28:57 AM

General Fund (10)

5290 Permanent Fund Transfers	<u>Elementary</u>	<u>Secondary</u>	<u>Federal</u>	<u>Total</u>
900 <u>Other Uses of Funds</u>				
930 Fund Transfers				48,628.00
Total Other Uses of Funds				\$48,628.00
Total 5290 Permanent Fund Transfers				\$48,628.00

LEA : 101631703 Canon-McMillan SD

Printed 10/28/2016 9:28:54 AM

Athletic / School-Sponsored Extra Curricular Activities Fund (29)

3000 Operation of Non-Instructional Services	<u>Total</u>
100 <u>Personnel Services – Salaries</u>	
100 Personnel Services – Salaries	36,545.00
Total Personnel Services – Salaries	\$36,545.00
200 <u>Personnel Services – Employee Benefits</u>	
220 Social Security Contributions	733.90
230 PSERS Retirement Contributions	2,288.15
260 Workers' Compensation	98.87
Total Personnel Services – Employee Benefits	\$3,120.92
300 <u>Purchased Professional and Technical Services</u>	
330 Other Professional Services	2,868.49
350 Security / Safety Services	1,690.28
390 Other Purchased Professional and Technical Services	1,593.41
Total Purchased Professional and Technical Services	\$6,152.18
600 <u>Supplies</u>	
610 General Supplies	64,226.26
Total Supplies	\$64,226.26
800 <u>Other Objects</u>	
810 Dues and Fees	175.00
Total Other Objects	\$175.00
Total 3000 Operation of Non-Instructional Services	\$110,219.36

LEA : 101631703 Canon-McMillan SD

Printed 10/28/2016 9:28:54 AM

Athletic / School-Sponsored Extra Curricular Activities Fund (29)

3200 Student Activities	<u>Elementary</u>	<u>Secondary</u>	<u>Federal</u>	<u>Total</u>
100 <u>Personnel Services – Salaries</u>				
100 Personnel Services – Salaries				36,545.00
Total Personnel Services – Salaries				\$36,545.00
200 <u>Personnel Services – Employee Benefits</u>				
220 Social Security Contributions				733.90
230 PSERS Retirement Contributions				2,288.15
260 Workers’ Compensation				98.87
Total Personnel Services – Employee Benefits				\$3,120.92
300 <u>Purchased Professional and Technical Services</u>				
330 Other Professional Services				2,868.49
350 Security / Safety Services				1,690.28
390 Other Purchased Professional and Technical Services				1,593.41
Total Purchased Professional and Technical Services				\$6,152.18
600 <u>Supplies</u>				
610 General Supplies				64,226.26
Total Supplies				\$64,226.26
800 <u>Other Objects</u>				
810 Dues and Fees				175.00
Total Other Objects				\$175.00
Total 3200 Student Activities				\$110,219.36

LEA : 101631703 Canon-McMillan SD

Printed 10/28/2016 9:28:58 AM

Athletic / School-Sponsored Extra Curricular Activities Fund (29)

5000 Other Expenditures and Financing Uses	<u>Total</u>
900 <u>Other Uses of Funds</u>	
930 Fund Transfers	5,905.00
Total Other Uses of Funds	\$5,905.00
Total 5000 Other Expenditures and Financing Uses	\$5,905.00

LEA : 101631703 Canon-McMillan SD

Printed 10/28/2016 9:28:58 AM

Athletic / School-Sponsored Extra Curricular Activities Fund (29)

5200 Interfund Transfers – Out	<u>Elementary</u>	<u>Secondary</u>	<u>Federal</u>	<u>Total</u>
900 <u>Other Uses of Funds</u>				
930 Fund Transfers				5,905.00
Total Other Uses of Funds				\$5,905.00
Total 5200 Interfund Transfers – Out				\$5,905.00

LEA : 101631703 Canon-McMillan SD

Printed 10/28/2016 9:28:58 AM

Athletic / School-Sponsored Extra Curricular Activities Fund (29)

5210 General Fund Transfers	<u>Elementary</u>	<u>Secondary</u>	<u>Federal</u>	<u>Total</u>
900 <u>Other Uses of Funds</u>				
930 Fund Transfers				5,905.00
Total Other Uses of Funds				\$5,905.00
Total 5210 General Fund Transfers				\$5,905.00

LEA : 101631703 Canon-McMillan SD

Printed 10/28/2016 9:28:56 AM

Capital Reserve Fund - § 1431 (32)	
4000 Facilities Acquisition, Construction and Improvement Services	<u>Total</u>
300 <u>Purchased Professional and Technical Services</u>	
330 Other Professional Services	3,045.00
Total Purchased Professional and Technical Services	\$3,045.00
400 <u>Purchased Property Services</u>	
430 Repairs and Maintenance Services	12,192.50
Total Purchased Property Services	\$12,192.50
700 <u>Property</u>	
710 Land and Improvements	97,600.00
Total Property	\$97,600.00
Total 4000 Facilities Acquisition, Construction and Improvement Services	\$112,837.50

LEA : 101631703 Canon-McMillan SD

Printed 10/28/2016 9:28:56 AM

Capital Reserve Fund - § 1431 (32)

4100 Site Acquisition Services – Original and Additional

Elementary

Secondary

Federal

Total

700 Property

710 Land and Improvements

97,600.00

Total Property

\$97,600.00

Total 4100 Site Acquisition Services – Original and Additional

\$97,600.00

LEA : 101631703 Canon-McMillan SD

Printed 10/28/2016 9:28:56 AM

Capital Reserve Fund - § 1431 (32)

4200 Existing Site Improvement Services

<u>Elementary</u>	<u>Secondary</u>	<u>Federal</u>	<u>Total</u>
-------------------	------------------	----------------	--------------

300 Purchased Professional and Technical Services

330 Other Professional Services			3,045.00
---------------------------------	--	--	----------

Total Purchased Professional and Technical Services			\$3,045.00
--	--	--	-------------------

Total 4200 Existing Site Improvement Services			\$3,045.00
--	--	--	-------------------

LEA : 101631703 Canon-McMillan SD

Printed 10/28/2016 9:28:56 AM

Capital Reserve Fund - § 1431 (32)

4600 Existing Building Improvement Services

Elementary

Secondary

Federal

Total

400 Purchased Property Services

430 Repairs and Maintenance Services

12,192.50

Total Purchased Property Services				\$12,192.50
Total 4600 Existing Building Improvement Services				\$12,192.50

LEA : 101631703 Canon-McMillan SD

Printed 10/28/2016 9:28:56 AM

Other Capital Projects Fund (39)

4000 Facilities Acquisition, Construction and Improvement Services

Total

300 Purchased Professional and Technical Services

330 Other Professional Services	426,303.05
---------------------------------	------------

Total Purchased Professional and Technical Services	\$426,303.05
--	---------------------

400 Purchased Property Services

420 Utility Services	72,694.26
----------------------	-----------

450 Construction Services	5,976,871.35
---------------------------	--------------

490 Other Purchased Property Services	98,118.10
---------------------------------------	-----------

Total Purchased Property Services	\$6,147,683.71
--	-----------------------

500 Other Purchased Services

520 Insurance – General	577,602.00
-------------------------	------------

Total Other Purchased Services	\$577,602.00
---------------------------------------	---------------------

Total 4000 Facilities Acquisition, Construction and Improvement Services	\$7,151,588.76
---	-----------------------

LEA : 101631703 Canon-McMillan SD

Printed 10/28/2016 9:28:56 AM

Other Capital Projects Fund (39)

4100 Site Acquisition Services – Original and Additional

Elementary Secondary Federal Total

400 <u>Purchased Property Services</u>				
420 Utility Services				35,412.55
490 Other Purchased Property Services				98,118.10
Total Purchased Property Services				\$133,530.65
Total 4100 Site Acquisition Services – Original and Additional				\$133,530.65

LEA : 101631703 Canon-McMillan SD

Printed 10/28/2016 9:28:56 AM

Other Capital Projects Fund (39)

4300 Architecture and Engineering Services / Educational Specifications Development – Original and Additional	<u>Elementary</u>	<u>Secondary</u>	<u>Federal</u>	<u>Total</u>
300 <u>Purchased Professional and Technical Services</u>				
330 Other Professional Services				56,262.47
Total Purchased Professional and Technical Services				\$56,262.47
Total 4300 Architecture and Engineering Services / Educational Specifications Development – Original and Additional				\$56,262.47

LEA : 101631703 Canon-McMillan SD

Printed 10/28/2016 9:28:56 AM

Other Capital Projects Fund (39)

4500 Building Acquisition and Construction Services – Original and Additional	<u>Elementary</u>	<u>Secondary</u>	<u>Federal</u>	<u>Total</u>
300 <u>Purchased Professional and Technical Services</u>				
330 Other Professional Services				370,040.58
Total Purchased Professional and Technical Services				\$370,040.58
400 <u>Purchased Property Services</u>				
420 Utility Services				37,281.71
450 Construction Services				5,976,871.35
Total Purchased Property Services				\$6,014,153.06
500 <u>Other Purchased Services</u>				
520 Insurance – General				577,602.00
Total Other Purchased Services				\$577,602.00
Total 4500 Building Acquisition and Construction Services – Original and Additional				\$6,961,795.64

LEA : 101631703 Canon-McMillan SD

Printed 10/28/2016 9:28:58 AM

Other Capital Projects Fund (39)

5000 Other Expenditures and Financing Uses

Total

900 Other Uses of Funds

930 Fund Transfers

222,387.00

Total Other Uses of Funds

\$222,387.00

Total 5000 Other Expenditures and Financing Uses

\$222,387.00

<u>Elementary</u>	<u>Secondary</u>	<u>Federal</u>	<u>Total</u>
-------------------	------------------	----------------	--------------

<u>Elementary</u>	<u>Secondary</u>	<u>Federal</u>	<u>Total</u>
-------------------	------------------	----------------	--------------

222,387.00

\$222,387.00

\$222,387.00

Page 139

LEA : 101631703 Canon-McMillan SD

Printed 10/28/2016 9:29:00 AM

	<u>General Fund(10)</u>	<u>Public Purpose Trust(27)</u>	<u>Other Compt Approved (28)</u>	<u>Athletic / Activity(29)</u>	<u>Capital Reserve (690. 1850)(31)</u>
1000 <u>Instruction</u>					
1100 Regular Programs - Elementary / Secondary	25,753,750.15				
1200 Special Programs - Elementary / Secondary	9,068,127.76				
1300 Vocational Education	1,901,889.27				
1400 Other Instructional Programs - Elementary / Secondary	384,454.14				
1500 Nonpublic School Programs	21,389.09				
Total Instruction	\$37,129,610.41				
2000 <u>Support Services</u>					
2100 Support Services - Students	2,020,177.83				
2200 Support Services - Instructional Staff	1,118,243.62				
2300 Support Services - Administration	4,398,134.65				
2400 Support Services - Pupil Health	1,669,860.78				
2500 Support Services - Business	712,745.56				
2600 Operation and Maintenance of Plant Services	6,265,596.25				
2700 Student Transportation Services	5,622,526.41				
2800 Support Services - Central	1,289,580.06				
2900 Other Support Services	747,214.26				
Total Support Services	\$23,844,079.42				
3000 <u>Operation of Non-Instructional Services</u>					
3200 Student Activities	1,530,934.08			110,219.36	
3300 Community Services	123,062.35				
Total Operation of Non-Instructional Services	\$1,653,996.43			\$110,219.36	
4000 <u>Facilities Acquisition, Construction and Improvement Services</u>					
4100 Site Acquisition Services - Original and Additional					
4200 Existing Site Improvement Services	384,005.50				
4300 Architecture and Engineering Services / Educational Specifications Development - Original and Additional	65,792.50				
4500 Building Acquisition and Construction Services - Original and Additional					
4600 Existing Building Improvement Services	588,723.70				
Total Facilities Acquisition, Construction and Improvement Services	\$1,038,521.70				
5000 <u>Other Expenditures and Financing Uses</u>					
5100 Debt Service / Other Expenditures and Financing Uses	8,365,654.69				
5200 Interfund Transfers - Out	323,628.00			5,905.00	
Total Other Expenditures and Financing Uses	\$8,689,282.69			\$5,905.00	
TOTAL ACTUAL EXPENDITURES & OTHER FINANCING USES	\$72,355,490.65			\$116,124.36	

LEA : 101631703 Canon-McMillan SD

Printed 10/28/2016 9:29:00 AM

	Capital Reserve (1431)(32)	Other Capital Projects Fund(39)	Debt Service(40)	Permanent(90)	Total
1000 Instruction					
1100 Regular Programs - Elementary / Secondary					25,753,750.15
1200 Special Programs - Elementary / Secondary					9,068,127.76
1300 Vocational Education					1,901,889.27
1400 Other Instructional Programs - Elementary / Secondary					384,454.14
1500 Nonpublic School Programs					21,389.09
Total Instruction					\$37,129,610.41
2000 Support Services					
2100 Support Services - Students					2,020,177.83
2200 Support Services - Instructional Staff					1,118,243.62
2300 Support Services - Administration					4,398,134.65
2400 Support Services - Pupil Health					1,669,860.78
2500 Support Services - Business					712,745.56
2600 Operation and Maintenance of Plant Services					6,265,596.25
2700 Student Transportation Services					5,622,526.41
2800 Support Services - Central					1,289,580.06
2900 Other Support Services					747,214.26
Total Support Services					\$23,844,079.42
3000 Operation of Non-Instructional Services					
3200 Student Activities					1,641,153.44
3300 Community Services					123,062.35
Total Operation of Non-Instructional Services					\$1,764,215.79
4000 Facilities Acquisition, Construction and Improvement Services					
4100 Site Acquisition Services - Original and Additional	97,600.00	133,530.65			231,130.65
4200 Existing Site Improvement Services	3,045.00				387,050.50
4300 Architecture and Engineering Services / Educational Specifications Development - Original and Additional		56,262.47			122,054.97
4500 Building Acquisition and Construction Services - Original and Additional		6,961,795.64			6,961,795.64
4600 Existing Building Improvement Services	12,192.50				600,916.20
Total Facilities Acquisition, Construction and Improvement Services	\$112,837.50	\$7,151,588.76			\$8,302,947.96
5000 Other Expenditures and Financing Uses					
5100 Debt Service / Other Expenditures and Financing Uses					8,365,654.69
5200 Interfund Transfers - Out		222,387.00			551,920.00
Total Other Expenditures and Financing Uses		\$222,387.00			\$8,917,574.69
TOTAL ACTUAL EXPENDITURES & OTHER FINANCING USES	\$112,837.50	\$7,373,975.76			\$79,958,428.27

LEA : 101631703 Canon-McMillan SD

Printed 10/28/2016 9:29:06 AM

PSERS Salary Data (Salary Data should relate to the General Fund only)

Amount	Description	Amount
	Total Salary Base for salaries subject to PSERS withholding	30,017,451.76
	Total Federally Funded salaries subject to PSERS withholding	335,906.45

Title I Expenditure Data

Amount	Description	Amount
	Expenditures Funded with Current Title I Funds	277,815.55
	Expenditures Funded with Carry over Title I Funds	181,371.99
Total	Title I Expenditure Data	\$459,187.54

Title I ARRA Amount

Amount	Description	Amount
	Portion of Total Title I Expenditures funded with ARRA Title I	

Benefits for Staff Relative to Collective Bargaining Agreements

	OBJECT	COVERED	NOT COVERED	TOTAL
10 General Fund	No Self Insurance data to report			
	211 Medical Insurance	5,832,998.77	739,906.59	6,572,905.36
	212 Dental Insurance	221,692.57	19,909.40	241,601.97
	215 Eye Care Insurance		1,286.02	1,286.02
	216 Prescription Insurance			
	271 Self-Insurance Medical Benefits			
	272 Self-Insurance Dental Benefits			
	275 Self-Insurance Eye Care Benefits			
	276 Self-Insurance Prescription Benefits			
	FUND TOTAL	\$6,054,691.34	\$761,102.01	\$6,815,793.35
50 Enterprise Fund	No Self Insurance data to report			
	211 Medical Insurance	205,774.83		205,774.83
	212 Dental Insurance	6,656.45		6,656.45
	215 Eye Care Insurance			
	216 Prescription Insurance			
	271 Self-Insurance Medical Benefits			
	272 Self-Insurance Dental Benefits			
	275 Self-Insurance Eye Care Benefits			
	276 Self-Insurance Prescription Benefits			
	FUND TOTAL	\$212,431.28		\$212,431.28
60 Internal Service Fund	No Self Insurance data to report			
	211 Medical Insurance			
	212 Dental Insurance			
	215 Eye Care Insurance			
	216 Prescription Insurance			
	271 Self-Insurance Medical Benefits			
	272 Self-Insurance Dental Benefits			
	275 Self-Insurance Eye Care Benefits			
	276 Self-Insurance Prescription Benefits			
	FUND TOTAL			
Total of All Funds		\$6,267,122.62	\$761,102.01	\$7,028,224.63

LEA : 101631703 Canon-McMillan SD

Printed 10/28/2016 9:29:07 AM

Function	Special Education (Prior Year)	Nonspecial Education (Prior Year)	Total (Prior Year)	Special Education (Current Year)	Nonspecial Education (Current Year)	Total (Current Year)
2120 Guidance Services	130,098.55	117,867.00	247,965.55	135,668.07	1,221,012.61	1,356,680.68
2140 Psychological Services	80.00		80.00	333,145.82		333,145.82
2150 Speech Pathology and Audiology Services						
2160 Social Work Services						
2260 Instruction and Curriculum Development Services	2,597.74	127,289.06	129,886.80	3,490.00	345,473.98	348,963.98
2350 Legal and Accounting Services	3,480.01	170,520.51	174,000.52	4,449.55	218,027.95	222,477.50
2420 Medical Services	241,547.79	1,536.00	243,083.79	936,471.73	4,350.00	940,821.73
2440 Nursing Services	77,652.08	569,448.60	647,100.68	87,392.71	640,879.84	728,272.55
2700 Student Transportation Services	1,270,879.87	4,254,684.79	5,525,564.66	1,292,123.07	4,325,803.34	5,617,926.41
Total	\$1,726,336.04	\$5,241,345.96	\$6,967,682.00	\$2,792,740.95	\$6,755,547.72	\$9,548,288.67

LEA : 101631703 Canon-McMillan SD

Printed 10/28/2016 9:29:08 AM

(PRINCIPAL AMOUNTS ONLY)

ALL GOVERNMENTAL FUND TYPES

	Short-Term Borrowing	General Obligation Bonds/Notes	Authority Building Obligations	Other Long-Term Debt	Other Post- Employment Benefits (OPEB)	Compensated Absences	Net Pension Liability	Total
1. Debt at Beginning of Fiscal Year		115,445,894.00			4,754,403.00	834,573.00		121,034,870.00
2. Additional Debt Incurred During Year					735,879.00	225,792.00	102,246,000.00	103,207,671.00
3. Retirements and Repayments		4,315,000.00			189,323.00	108,837.00	5,750,000.00	10,363,160.00
4. Debt at End of Fiscal Year		111,130,894.00			5,300,959.00	951,528.00	96,496,000.00	213,879,381.00
5. Accreted Interest at End Of Fiscal Year		20,339,179.00						20,339,179.00
6. Total Debt and Accreted Interest		131,470,073.00			5,300,959.00	951,528.00	96,496,000.00	234,218,560.00
7. Current Portion P&I - Due within 1 year		7,784,950.90				23,007.00		7,807,957.90
8. Interest Paid during current fiscal year		3,397,244.60						3,397,244.60

(PRINCIPAL AMOUNTS ONLY)

ALL PROPRIETARY FUND TYPES

- Debt at Beginning of Fiscal Year
- Additional Debt Incurred During Year
- Retirements and Repayments
- Debt at End of Fiscal Year
- Accreted Interest at End Of Fiscal Year
- Total Debt and Accreted Interest
- Current Portion P&I - Due within 1 year
- Interest Paid during current fiscal year

LEA : 101631703 Canon-McMillan SD

Printed 10/28/2016 9:29:08 AM

Total Principal and Interest Payments Made by Your School - All Funds

Function	Fund		Principal (910)	Principal (920)	Interest (830)	Total (Principal +Interest)	Misc Other Uses (990)
5110	10	General Fund	4,385,000.00		3,397,244.51	7,782,244.51	
5110	20	Special Revenue Funds					
5110	30	Capital Projects Funds					
5110	40	Debt Service Fund					
5110	90	Permanent Fund					
5120	10	General Fund					
5120	20	Special Revenue Funds					
5120	30	Capital Projects Funds					
5120	40	Debt Service Fund					
Total Debt Payments - Governmental Funds			\$4,385,000.00		\$3,397,244.51	\$7,782,244.51	

Function	Fund		Principal (910)	Principal (920)	Interest (830)	Total (Principal +Interest)
5110	50	Enterprise Fund				
5110	60	Internal Service Fund				
5120	50	Enterprise Fund				
5120	60	Internal Service Fund				
Total Debt Payments - Proprietary Funds						

LEA : 101631703 Canon-McMillan SD

Printed 10/28/2016 9:29:08 AM

Bond Details
Governmental Funds

Debt Category	Debt Issue Date (MM/YYYY)	Principal Amounts Only				Current Portion Due Within One Year (Principal and Interest)	Interest Paid During Fiscal Year
		Debt at Beginning of Fiscal Year	Additions	Reductions / Repayments	Debt at End of Fiscal Year		
General Obligation Bonds/Notes – CAB	12/1999	14,625,626.00			14,625,626.00		
General Obligation Bonds/Notes – CAB	01/2001	5,794,822.00			5,794,822.00	28,624.00	
General Obligation Bonds/Notes – CAB	04/2002	5,730,446.00			5,730,446.00		
General Obligation Bonds/Notes – CIB	12/2002	10,000.00		5,000.00	5,000.00	5,103.80	308.80
General Obligation Bonds/Notes – CIB	03/2008	1,745,000.00		110,000.00	1,635,000.00	174,370.00	62,915.00
General Obligation Bonds/Notes – CIB	12/2012	18,755,000.00		15,000.00	18,740,000.00	599,456.30	584,793.80
General Obligation Bonds/Notes – CIB	12/2012	2,060,000.00		210,000.00	1,850,000.00	255,657.90	49,128.10
General Obligation Bonds/Notes – CIB	01/2014	7,730,000.00		3,975,000.00	3,755,000.00	3,784,391.40	84,728.90
General Obligation Bonds/Notes – CIB	01/2014	9,865,000.00			9,865,000.00	675,375.00	388,275.00
General Obligation Bonds/Notes – CIB	01/2014	23,780,000.00			23,780,000.00	1,067,000.00	1,067,000.00
General Obligation Bonds/Notes – CIB	10/2014	25,350,000.00			25,350,000.00	1,194,972.50	1,160,095.00
Compensated Absences		834,573.00	225,792.00	108,837.00	951,528.00	23,007.00	
Other Post-Employment Benefits (OPEB)		4,754,403.00	735,879.00	189,323.00	5,300,959.00		
Net Pension Liability			102,246,000.00	5,750,000.00	96,496,000.00		
Totals for Debt Entered:		\$121,034,870.00	\$103,207,671.00	\$10,363,160.00	\$213,879,381.00	\$7,807,957.90	\$3,397,244.60

LEA : 101631703 Canon-McMillan SD

Printed 10/28/2016 9:29:08 AM

Accreted Interest Detail
Governmental Funds

Debt Category	Debt Issue Date (MM/YYYY)	Beginning Accreted Interest	Additions	Reductions	Ending Accreted Interest	Ending bond Principal	Ending Principal Plus Accreted Interest
General Obligation Bonds/Notes – CAB	12/1999	10,518,992.00	1,071,322.00		11,590,314.00	14,625,626.00	26,215,940.00
General Obligation Bonds/Notes – CAB	01/2001	3,907,664.00	407,685.00	39,505.00	4,275,844.00	5,794,822.00	10,070,666.00
General Obligation Bonds/Notes – CAB	04/2002	4,025,212.00	447,809.00		4,473,021.00	5,730,446.00	10,203,467.00
Totals for Debt Entered:		\$18,451,868.00	\$1,926,816.00	\$39,505.00	\$20,339,179.00	\$26,150,894.00	\$46,490,073.00

LEA : 101631703 Canon-McMillan SD

Printed 10/28/2016 9:29:09 AM

General Fund (10)

Section 1: Tuition/Purchased Services as Reported within Expenditure Detail	Amount
Tuition Reported in General Fund Expenditures 1000-560	3,063,787.40
Purchased Services in General Fund Expenditures 1000-594 and 1000-597	
Section 1 Total	\$3,063,787.40

Section 2: Tuition Paid to Institution Types During Fiscal Year	Tuition Paid For Nonspecial Education	Tuition Paid For Special Education	Total
1 1306 Institutions			
2 Institutionalized Children's Programs			
3 Juveniles Incarcerated in Adult Facilities			
4 Residential Treatment Facilities	1,876.61	747,425.90	749,302.51
5 Other Local Education Agencies	36,227.94		36,227.94
6 Brick and Mortar Charter Schools	102,953.59	23,911.48	126,865.07
7 Cyber Charter Schools	703,331.19	318,276.91	1,021,608.10
8 Career and Technology Centers	404,947.43		404,947.43
9 Approved Private Schools	8,487.49	468,931.56	477,419.05
10 PA Chartered Schools for the Deaf and Blind			
11 Private Residential Rehabilitative Institutions			
12 Juvenile Detention Centers	934.20	85,866.10	86,800.30
13 Special Program Jointures	159,040.00		159,040.00
14 Other Tuition Not Included Elsewhere In This Section		1,577.00	1,577.00
Section 2 Total	\$1,417,798.45	\$1,645,988.95	\$3,063,787.40

1 .	<u>Student Transportation Services for Educational Field Trips</u>	54,187.36
2 .	<u>Student Transportation Services for Student Activities</u>	66,174.02
3 .	<u>Rental of Vehicles for Student Transportation Services</u>	
4 .	<u>Capital Reserve Funds</u>	

Include only district-owned transportation expenditures paid from State or local money.
DO NOT include federal expenditures or payments to contract service providers.
Contracted transportation services should not be recorded on this schedule.

LEA : 101631703 Canon-McMillan SD

Printed 10/28/2016 9:29:10 AM

Food Service / Cafeteria Operations Fund (51)

3000 Operation of Non-Instructional Services	<u>Total</u>
100 <u>Personnel Services – Salaries</u>	
100 Personnel Services – Salaries	671,251.00
Total Personnel Services – Salaries	\$671,251.00
200 <u>Personnel Services – Employee Benefits</u>	
210 Group Insurance – Contracted Provider	214,594.04
220 Social Security Contributions	48,603.31
230 PSERS Retirement Contributions	169,505.43
250 Unemployment Compensation	39.56
260 Workers’ Compensation	6,907.13
Total Personnel Services – Employee Benefits	\$439,649.47
400 <u>Purchased Property Services</u>	
430 Repairs and Maintenance Services	4,982.23
Total Purchased Property Services	\$4,982.23
500 <u>Other Purchased Services</u>	
530 Communications	272.93
580 Travel	2,972.01
599 Other Miscellaneous Purchased Services	1,130,440.59
Total Other Purchased Services	\$1,133,685.53
600 <u>Supplies</u>	
610 General Supplies	21,799.92
630 Food	121,279.87
Total Supplies	\$143,079.79
700 <u>Property</u>	
740 Depreciation	9,644.00
760 Equipment – Replacement	25.39
Total Property	\$9,669.39
Total 3000 Operation of Non-Instructional Services	\$2,402,317.41

LEA : 101631703 Canon-McMillan SD

Printed 10/28/2016 9:29:10 AM

Food Service / Cafeteria Operations Fund (51)

3100 Food Services	Elementary	Secondary	Federal	Total
100 <u>Personnel Services – Salaries</u>				
100 Personnel Services – Salaries				671,251.00
Total Personnel Services – Salaries				\$671,251.00
200 <u>Personnel Services – Employee Benefits</u>				
210 Group Insurance – Contracted Provider				214,594.04
220 Social Security Contributions				48,603.31
230 PSERS Retirement Contributions				169,505.43
250 Unemployment Compensation				39.56
260 Workers' Compensation				6,907.13
Total Personnel Services – Employee Benefits				\$439,649.47
400 <u>Purchased Property Services</u>				
430 Repairs and Maintenance Services				4,982.23
Total Purchased Property Services				\$4,982.23
500 <u>Other Purchased Services</u>				
530 Communications				272.93
580 Travel				2,972.01
599 Other Miscellaneous Purchased Services			715,213.00	1,130,440.59
Total Other Purchased Services			\$715,213.00	\$1,133,685.53
600 <u>Supplies</u>				
610 General Supplies				21,799.92
630 Food				121,279.87
Total Supplies				\$143,079.79
700 <u>Property</u>				
740 Depreciation				9,644.00
760 Equipment – Replacement				25.39
Total Property				\$9,669.39
Total 3100 Food Services			\$715,213.00	\$2,402,317.41

	<u>Food Service(51)</u>	<u>Child Care Operations(52)</u>	<u>Other Enterprise(58)</u>	<u>Internal Service(60)</u>	<u>Total</u>
3000 <u>Operation of Non-Instructional Services</u>					
3100 Food Services	2,402,317.41				2,402,317.41
Total Operation of Non-Instructional Services	\$2,402,317.41				\$2,402,317.41
TOTAL ACTUAL EXPENDITURES & OTHER FINANCING USES	\$2,402,317.41				\$2,402,317.41

Canon-McMillan SD

Schedule of Subcontracts/Subawards for each Department

Fiscal Year: 2015-2016

Fund Code	Account Code	Object Code	Organization Name	Contract Identifier	Original Subgrant/Subaward Amount	Fiscal Year Expenditure	\$25,000 Fiscal Year Contract Expenditures in Base	Fiscal Year Contract Expenditures in excess of \$25,000 Total Exclusions
10	1100	322	IU #1	1	\$286,636.95	\$241,965.57	\$25,000.00	\$216,965.57
			Total 1100 Regular Programs – Elementary / Secondary		\$286,636.95	\$241,965.57	\$25,000.00	\$216,965.57
10	1200	322	IU #1 Special Education	2	\$841,128.00	\$814,128.00	\$25,000.00	\$789,128.00
			Total 1200 Special Programs – Elementary / Secondary		\$841,128.00	\$814,128.00	\$25,000.00	\$789,128.00
10	2400	322	IU#3 Allegheny	5	\$387,000.00	\$386,287.23	\$25,000.00	\$361,287.23
			Total 2400 Support Services – Pupil Health		\$387,000.00	\$386,287.23	\$25,000.00	\$361,287.23
			TOTAL		\$1,514,764.95	\$1,442,380.80	\$75,000.00	\$1,367,380.80