

LEA Name : Canon-McMillan SD
Address : 1 N Jefferson Ave
Canonsburg , PA 15317

County : Washington
AUN Number : 101631703
LEA Type : SD

Annual Financial Report Accuracy Certification Statement

For Fiscal Year Ending

6/30/2018

Pennsylvania Department of Education

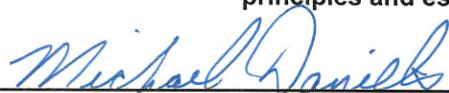
&

Office of Comptroller Operations

PDE-2056: Intermediate Unit

PDE-2057: School District, AVTS/CTC, Charter School,
and Special Program Jointure

CERTIFICATION: By signing this page I agree that the electronic data submitted is a complete and accurate statement of the financial operations and status of the local education agency for the fiscal year. It has been prepared in accordance with generally accepted accounting principles and established Commonwealth of PA reporting guidelines.



Chief School Administrator Signature

10-30-2018

Date



Board Secretary Signature

10/29/18

Date

Joni B Mansmann

Contact Person

mansmannj@cmsd.k12.pa.us

Contact Person E-mail Address

(724)746-2940

Ext :9109

Contact Person Telephone Number

(724)746-9184

Contact Person Fax Number

Audit Certification
Annual Financial Report:
For Fiscal Year Ending **6/30/2018**
(Pursuant to PA School Code Section 218(b))

LEA Name : Canon-McMillan SD
AUN Number : 101631703
County : Washington

Audit Certification Due: 12/31/2018

This certification is applicable to the Annual Financial Report data submitted
through the Consolidated Financial Reporting System on: 10/29/18
Date

Auditing Firm:

Cypher & Cypher
179 E. Pike Street

Canonsburg , PA , 15317-

Auditor Contact Name: Stephen Cypher

Auditor Phone: (724)745-3543

Auditor E-mail: scypher@cyphercpa.com

CERTIFICATION: By signing this page I agree that the financial statements of the school have been properly audited as noted above pursuant to Article XXIV, and in the auditor's professional opinion, the Annual Financial Report (PDE-2057) submitted on the date referenced is materially consistent with the audited financial statements.

Chief School Administrator

Michael Daniels
Signature Date 10/30/18

Board Secretary

Joni B. Mansmann
Signature Date 10/29/18

Joni B Mansmann

Contact Person

mansmannj@cmsd.k12.pa.us

Contact Person E-mail Address

(724)746-2940

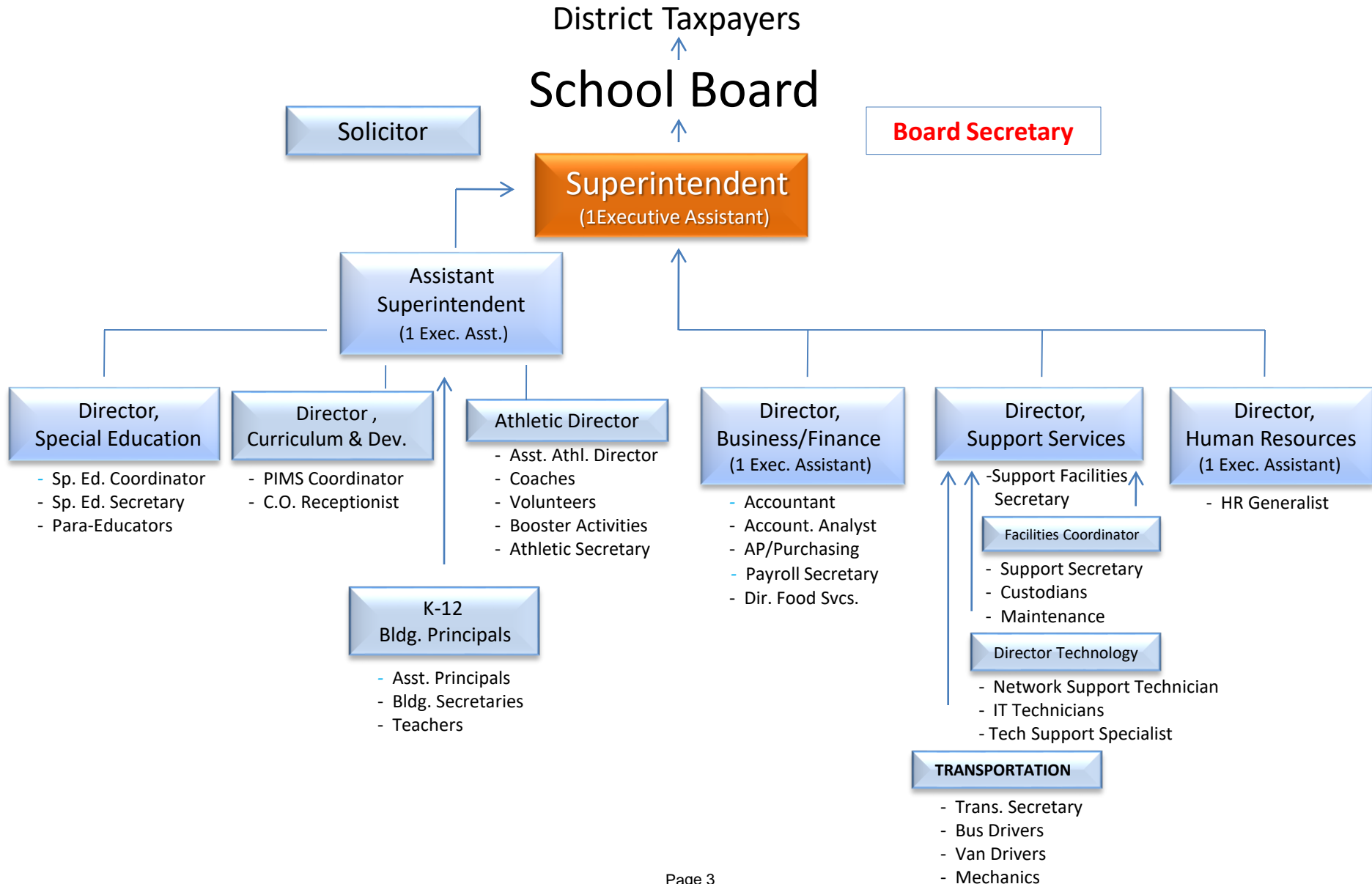
Ext :9109

Contact Person Telephone Number

(724)746-9184

Contact Person Fax Number

CMSD Admin Org Chart



<u>Val Number</u>	<u>Description</u>	<u>Justification</u>
12195	<p>REG: Current Year AFR Beginning Fund Balance must equal Prior Year AFR Ending Fund Balance. Justifications to this error must fully explain the situation that prompted a fund balance restatement. "Auditor Adjustment" is not a sufficient justification.</p> <p>Total Govt Funds, Beg Bal: \$48,694,241.00 PY Ending Bal, Govt Funds: \$48,837,459.00</p>	<p>Southwood (SW)resides in our district we adjusted accounting last year to record as pass thru for tuition pymts recv'd from LEA's that are then remitted to SW.In making accounting change part of an outstanding receivable accrual missed(143,221+\$3Rounding)</p>
12196	<p>REG - Fund 10: Current Year AFR Beginning Fund Balance must equal Prior Year AFR Ending Fund Balance. Justifications to this error must fully explain the situation that prompted a fund balance restatement. "Auditor Adjustment" is not a sufficient justification.</p> <p>REG Fund 10, Beg Fund Bal: \$8,987,159.00 PY Ending Fund Balance: \$9,130,379.00</p>	<p>Southwood (SW) resides in our district we adjusted accounting last year to record as a pass thru for tuition pymts received from LEA's that are then remitted to SW.In making accounting change part of an outstanding receivable accrual was missed (143,221)</p>
30450	<p>Revenue Detail: AFR amount must equal or exceed PDE FAI System amount.</p> <p>7271, AFR Rev Detail: \$2,241,650.50 7271, PDE FAI System: \$2,252,965.53</p>	<p>Revenue totaling \$11,315.03 was recorded as a receivable 6/30/2017 and the revenue was recognized in the 16/17 year. For this reason, the 17/18 revenue amount in account 7271 does not tie to the FAI System amount.</p>
50160	<p>SOIN: All Governmental Fund General Obligation Bonds must include an amount for Interest Paid during Fiscal Year. Correct data or enter a justification.</p>	<p>GBO's 1999, 2001 and 2002; no interest to be paid during the current Fiscal Year due to the structuring of the debt.</p>
50200	<p>SOIN: All Governmental Fund - Other Long Term Debt/Extended Term Fin must include an amount for Amount Due Within One Year (Principal and Interest). Correct data or enter a justification.</p>	<p>GASB 75 - 1st Year Reporting Health Insurance Premium Liability</p>
50281	<p>SOIN: Current Year AFR amount must equal Prior Year AFR amount.</p> <p>SOIN, Beg Bal, Other Long Term Debt: \$4,997,000.00 PY Ending Bal, Other Long Term Debt: \$0.00</p>	<p>GASB 75 - 1st Year Reporting Health Insurance Premium Liability</p>

LEA : 101631703 Canon-McMillan SD

Printed 10/30/2018 10:38:00 AM

Amounts Expressed in Whole Dollars		<u>General Fund</u> <u>(10)</u>	<u>Public Purpose Trust</u> <u>(27)</u>	<u>Other Compt Approved</u> <u>(28)</u>	<u>Athletic / Activity</u> <u>(29)</u>	<u>Capital Reserve (690.</u> <u>1850)</u> <u>(31)</u>
Assets And Deferred Outflows Of Resources						
Assets						
0100 Cash and Cash Equivalents		9,980,036			31,157	
0110 Investments		597,882				
0120 Taxes Receivable		1,393,665				
0130 Due From Other Funds		573,799			23	
0141 Due From Other Governments						
0142 State Revenue Receivable		2,724,057				
0143 Federal Revenue Receivable		115,824				
0145 Other Intergovernmental Revenue Receivable		35,895				
0146 Due from Primary Government						
0147 Due from Component Unit						
0150 Other Receivables		528,263				
0170 Inventories		94,672				
0180 Prepaid Expenses (Expenditures)		16,124				
0190 Other Current Assets						
Total Assets		\$16,060,217			\$31,180	
0910 Deferred Outflows of Resources						
Total Assets And Deferred Outflows Of Resources		\$16,060,217			\$31,180	

LEA : 101631703 Canon-McMillan SD

Printed 10/30/2018 10:38:00 AM

Amounts Expressed in Whole Dollars		<u>Capital Reserve (1431</u> <u>(32)</u>	<u>Other Capital Projects</u> <u>Fund</u> <u>(39)</u>	<u>Debt Service</u> <u>(40)</u>	<u>Permanent</u> <u>(90)</u>	<u>Total Governmental</u> <u>Funds</u>
Assets And Deferred Outflows Of Resources						
Assets						
0100	Cash and Cash Equivalents	3,939,945	25,941,060	1,112,236		41,004,434
0110	Investments	513,814		3,462,659		4,574,355
0120	Taxes Receivable					1,393,665
0130	Due From Other Funds		2,000,000			2,573,822
0141	Due From Other Governments					
0142	State Revenue Receivable					2,724,057
0143	Federal Revenue Receivable					115,824
0145	Other Intergovernmental Revenue Receivable					35,895
0146	Due from Primary Government					
0147	Due from Component Unit					
0150	Other Receivables	31,125				559,388
0170	Inventories					94,672
0180	Prepaid Expenses (Expenditures)					16,124
0190	Other Current Assets					
Total Assets		\$4,484,884	\$27,941,060	\$4,574,895		\$53,092,236
0910	Deferred Outflows of Resources					
Total Assets And Deferred Outflows Of Resources		\$4,484,884	\$27,941,060	\$4,574,895		\$53,092,236

LEA : 101631703 Canon-McMillan SD

Printed 10/30/2018 10:38:00 AM

Amounts Expressed in Whole Dollars	<u>General Fund</u> <u>(10)</u>	<u>Public Purpose Trust</u> <u>(27)</u>	<u>Other Compt Approved</u> <u>(28)</u>	<u>Athletic / Activity</u> <u>(29)</u>	<u>Capital Reserve (690.</u> <u>1850)</u> <u>(31)</u>
Liabilities And Deferred Inflows Of Resources And Fund Balances					
Liabilities					
0400 Due to Other Funds	2,000,023				
0411 Due to Other Governments					
0412 Due to Primary Government					
0413 Due to Component Unit					
0420 Accounts Payable	877,823			175	
0430 Contracts Payable					
0440 Current Portion of Long-Term Debt					
0450 Short-Term Payables					
0461 Accrued Salaries and Benefits	8,365,707				
0462 Payroll Deductions and Withholding					
0480 Unearned Revenues	43,777				
0490 Other Current Liabilities	36,901				
Total Liabilities	\$11,324,231			\$175	
0950 Deferred Inflows of Resources					
Fund Balances					
0810 Nonspendable Fund Balance	110,796				
0820 Restricted Fund Balance					
0830 Committed Fund Balance	1,500,000			31,005	
0840 Assigned Fund Balance	154,638				
0850 Unassigned Fund Balance	2,970,552				
Total Fund Balances	\$4,735,986			\$31,005	
Total Liabilities, Deferred Inflows Of Resources And Fund Balances	\$16,060,217			\$31,180	

LEA : 101631703 Canon-McMillan SD

Printed 10/30/2018 10:38:00 AM

Amounts Expressed in Whole Dollars	<u>Capital Reserve (1431)</u> <u>(32)</u>	<u>Other Capital Projects</u> <u>Fund</u> <u>(39)</u>	<u>Debt Service</u> <u>(40)</u>	<u>Permanent</u> <u>(90)</u>	<u>Total Governmental</u> <u>Funds</u>
Liabilities And Deferred Inflows Of Resources And Fund Balances					
Liabilities					
0400 Due to Other Funds					2,000,023
0411 Due to Other Governments	1,973				1,973
0412 Due to Primary Government					
0413 Due to Component Unit					
0420 Accounts Payable		2,916,531			3,794,529
0430 Contracts Payable					
0440 Current Portion of Long-Term Debt					
0450 Short-Term Payables					
0461 Accrued Salaries and Benefits					8,365,707
0462 Payroll Deductions and Withholding					
0480 Unearned Revenues					43,777
0490 Other Current Liabilities					36,901
Total Liabilities	\$1,973	\$2,916,531			\$14,242,910
0950 Deferred Inflows of Resources					
Fund Balances					
0810 Nonspendable Fund Balance					110,796
0820 Restricted Fund Balance					
0830 Committed Fund Balance	4,482,911	25,024,529	4,574,895		35,613,340
0840 Assigned Fund Balance					154,638
0850 Unassigned Fund Balance					2,970,552
Total Fund Balances	\$4,482,911	\$25,024,529	\$4,574,895		\$38,849,326
Total Liabilities, Deferred Inflows Of Resources And Fund Balances	\$4,484,884	\$27,941,060	\$4,574,895		\$53,092,236

Amounts Expressed in Whole Dollars	General Fund (10)	Public Purpose Trust (27)	Other Compt Approved (28)	Athletic / Activity (29)	Capital Reserve (690. 1850) (31)
Revenues					
6000 Revenue from Local Sources	59,147,711			113,442	
7000 Revenue from State Sources	23,394,510				
8000 Revenue from Federal Sources	669,864				
Total Revenues	\$83,212,085			\$113,442	
Expenditures					
1000 Instruction	41,726,748				
2000 Support Services	25,913,101				
3000 Operation of Non-Instructional Services	1,867,025			101,968	
4000 Facilities Acquisition, Construction and Improvement Services	564,583				
5110 Debt Service	9,485,365				
5130 Refund of Prior Year Revenues / Receipts	21,382				
Total Expenditures	\$79,578,204			\$101,968	
Excess (Deficiency) Of Revenues Over Expenditures	\$3,633,881			\$11,474	
Other Financing Sources (Uses)					
9110 Face Value of Bonds Issued					
9120 Proceeds from Refunding of Bonds					
9130 Bond Premiums					
9200 Proceeds from Extended-Term Financing					
9300 Interfund Transfers - IN					
9400 Sale of or Compensation for Loss of Fixed Assets	666,512				
9710 Transfers from Component Units					
9720 Transfers from Primary Governments					
9910 Other Financing Sources Not Listed in the 9000 Series					
9990 Insurance Recoveries					
5120 Debt Service – Refunded Bonds					
5150 Bond Discounts					
5200 Interfund Transfers – Out	8,551,565				
5300 Transfers Out to Component Units/Primary Governments					
Total Other Financing Sources (Uses)	(\$7,885,053)				

LEA : 101631703 Canon-McMillan SD

Printed 10/30/2018 10:38:10 AM

Amounts Expressed in Whole Dollars	<u>Capital Reserve (1431)</u> <u>(32)</u>	<u>Other Capital Projects</u> <u>Fund</u> <u>(39)</u>	<u>Debt Service</u> <u>(40)</u>	<u>Permanent</u> <u>(90)</u>	<u>Total Governmental</u> <u>Funds</u>
Revenues					
6000 Revenue from Local Sources	49,920	255,450	41,090		59,607,613
7000 Revenue from State Sources					23,394,510
8000 Revenue from Federal Sources					669,864
Total Revenues	\$49,920	\$255,450	\$41,090		\$83,671,987
Expenditures					
1000 Instruction					41,726,748
2000 Support Services					25,913,101
3000 Operation of Non-Instructional Services					1,968,993
4000 Facilities Acquisition, Construction and Improvement Services	611,284	13,891,958			15,067,825
5110 Debt Service					9,485,365
5130 Refund of Prior Year Revenues / Receipts					21,382
Total Expenditures	\$611,284	\$13,891,958			\$94,183,414
Excess (Deficiency) Of Revenues Over Expenditures	(\$561,364)	(\$13,636,508)	\$41,090		(\$10,511,427)
Other Financing Sources (Uses)					
9110 Face Value of Bonds Issued					
9120 Proceeds from Refunding of Bonds					
9130 Bond Premiums					
9200 Proceeds from Extended-Term Financing					
9300 Interfund Transfers - IN		8,551,565			8,551,565
9400 Sale of or Compensation for Loss of Fixed Assets					666,512
9710 Transfers from Component Units					
9720 Transfers from Primary Governments					
9910 Other Financing Sources Not Listed in the 9000 Series					
9990 Insurance Recoveries					
5120 Debt Service – Refunded Bonds					
5150 Bond Discounts					
5200 Interfund Transfers – Out					8,551,565
5300 Transfers Out to Component Units/Primary Governments					
Total Other Financing Sources (Uses)		\$8,551,565			\$666,512

Amounts Expressed in Whole Dollars		<u>General Fund</u> <u>(10)</u>	<u>Public Purpose Trust</u> <u>(27)</u>	<u>Other Compt Approved</u> <u>(28)</u>	<u>Athletic / Activity</u> <u>(29)</u>	<u>Capital Reserve</u> <u>(690.</u> <u>1850)</u> <u>(31)</u>
Special And Extraordinary Items						
9920	Special Items – Gains					
9930	Extraordinary Items – Gains					
5520	Special Items – Losses					
5530	Extraordinary Items – Losses					
Net Change In Fund Balances		(\$4,251,172)			\$11,474	
Fund Balance						
0001	Fund Balance - Beginning of Fiscal Year	8,987,159			19,530	
Fund Balance - End Of Year		\$4,735,987			\$31,004	

Amounts Expressed in Whole Dollars		<u>Capital Reserve (1431</u> <u>(32)</u>	<u>Other Capital Projects</u> <u>Fund</u> <u>(39)</u>	<u>Debt Service</u> <u>(40)</u>	<u>Permanent</u> <u>(90)</u>	<u>Total Governmental</u> <u>Funds</u>
Special And Extraordinary Items						
9920 Special Items – Gains						
9930 Extraordinary Items – Gains						
5520 Special Items – Losses						
5530 Extraordinary Items – Losses						
Net Change In Fund Balances		(\$561,364)	(\$5,084,943)	\$41,090		(\$9,844,915)
Fund Balance						
0001 Fund Balance - Beginning of Fiscal Year		5,044,275	30,109,472	4,533,805		48,694,241
Fund Balance - End Of Year		\$4,482,911	\$25,024,529	\$4,574,895		\$38,849,326

LEA : 101631703 Canon-McMillan SD

Printed 10/30/2018 10:38:11 AM

Amounts Expressed in Whole Dollars	Food Service (51)	Child Care Operations (52)	Other Enterprise (58)	TOTAL	Internal Service (60)
Assets And Deferred Outflows Of Resources					
Current Assets					
0100 Cash and Cash Equivalents	462,480			462,480	
0110 Investments	355,541			355,541	5,309,257
0130 Due From Other Funds					
0141 Due From Other Governments					
0142 State Revenue Receivable	8,816			8,816	
0143 Federal Revenue Receivable	97,699			97,699	
0146 Due from Primary Government					
0147 Due from Component Unit					
0150 Other Receivables	120,839			120,839	
0170 Inventories	24,178			24,178	
0180 Prepaid Expenses (Expenditures)					
0190 Other Current Assets					
Total Current Assets	\$1,069,553			\$1,069,553	\$5,309,257
Noncurrent Assets					
0211 Land					
0212 Site Improvements (Net)					
0220 Buildings and Building Improvements (Net)					
0230 Machinery, Equipment and Furniture (Net)	458,244			458,244	
0250 Construction in Progress					
0260 Long Term Prepayments					
0290 Other Noncurrent Assets					
Total Noncurrent Assets	\$458,244			\$458,244	
0910 Deferred Outflows of Resources					
Total Assets And Deferred Outflows Of Resources	\$1,527,797			\$1,527,797	\$5,309,257

LEA : 101631703 Canon-McMillan SD

Printed 10/30/2018 10:38:11 AM

Amounts Expressed in Whole Dollars	Food Service (51)	Child Care Operations (52)	Other Enterprise (58)	TOTAL	Internal Service (60)
Liabilities And Deferred Inflows Of Resources And Net Position					
Current Liabilities					
0400 Due to Other Funds	573,799			573,799	
0411 Due to Other Governments					
0413 Due to Component Unit					
0420 Accounts Payable	24,572			24,572	
0430 Contracts Payable					
0440 Current Portion of Long-Term Debt					
0450 Short-Term Payables					
0461 Accrued Salaries and Benefits					
0462 Payroll Deductions and Withholding					
0480 Unearned Revenues	24,178			24,178	
0490 Other Current Liabilities	114,991			114,991	
Total Current Liabilities	\$737,540			\$737,540	
Noncurrent Liabilities					
0510 Bonds Payable					
0520 Extended-Term Financing Agreements Payable					
0530 Lease-Purchase Obligations					
0540 Accumulated Compensated Absences					
0550 Authority Lease Obligations					
0560 Other Post-Employment Benefits (OPEB)					
0570 Net Pension Liability					
0599 Other Noncurrent Liabilities					
Total Noncurrent Liabilities					
Total Liabilities	\$737,540			\$737,540	
0950 Deferred Inflows of Resources					
Net Position					
0791 Net Investment in Capital Assets	458,244			458,244	
0008 Restricted Net Position (0792 – 0798)					5,309,257
0799 Unrestricted Net Position	332,013			332,013	
Total Net Position	\$790,257			\$790,257	\$5,309,257
Total Liabilities And Deferred Inflows Of Resources And Net Position	\$1,527,797			\$1,527,797	\$5,309,257

Amounts Expressed in Whole Dollars	Food Service (51)	Child Care Operations (52)	Other Enterprise (58)	TOTAL	Internal Service (60)
Operating Revenues					
6600 Food Service Revenue	1,365,431			1,365,431	
0071 Charges for Services					
0072 Other Operating Revenue	11,755			11,755	
Total Operating Revenues	\$1,377,186			\$1,377,186	
Operating Expenses					
100 Personnel Services – Salaries	652,867			652,867	
200 Personnel Services – Employee Benefits	459,239			459,239	
300 Purchased Professional and Technical Services					
400 Purchased Property Services	3,975			3,975	
500 Other Purchased Services	1,171,370			1,171,370	
600 Supplies	151,763			151,763	
740 Depreciation	47,343			47,343	
810 Dues and Fees					735
890 Miscellaneous Expenditures					
Total Operating Expenses	\$2,486,557			\$2,486,557	\$735
Operating Income (Loss)	(\$1,109,371)			(\$1,109,371)	(\$735)
Non Operating Revenues (Expenses)					
6500 Earnings on Investments	6,473			6,473	30,395
6920 Contributions and Donations from Private Sources					
6930 Gains or Losses on Sale of Fixed Assets					
6991 Refunds of a Prior Year Expenditure	(3,999)			(3,999)	
7000 Revenue from State Sources	185,352			185,352	
8000 Revenue from Federal Sources	795,109			795,109	
820 Claims and Judgments Against the LEA					
830 Interest					
TOTAL Non Operating Revenues (Expenses)	\$982,935			\$982,935	\$30,395
Income (Loss) Before Contributions And Transfers	(\$126,436)			(\$126,436)	\$29,660

Amounts Expressed in Whole Dollars	<u>Food Service</u> <u>(51)</u>	<u>Child Care Operations</u> <u>(52)</u>	<u>Other Enterprise</u> <u>(58)</u>	<u>TOTAL</u>	<u>Internal Service</u> <u>(60)</u>
Contributions, Transfers, and Special and Extraordinary Items					
5200 Interfund Transfers – Out					
5300 Transfers Out to Component Units/Primary Governments					
5520 Special Items – Losses					
5530 Extraordinary Items – Losses					
9300 Interfund Transfers - IN					
9500 Capital Contributions					
9700 Transfers IN From Component Units/Primary Governments					
9920 Special Items – Gains					
9930 Extraordinary Items – Gains					
Change In Net Position	(\$126,436)			(\$126,436)	\$29,660
0002 Net Position - Beginning of Fiscal Year	916,693			916,693	5,279,597
0003 Accounting Changes / Residual Equity Transfers					
Net Position - End Of Year	\$790,257			\$790,257	\$5,309,257

LEA : 101631703 Canon-McMillan SD

Printed 10/30/2018 10:38:22 AM

Amounts Expressed in Whole Dollars	<u>Food Service</u> <u>(51)</u>	<u>Child Care Operations</u> <u>(52)</u>	<u>Other Enterprise</u> <u>(58)</u>	<u>TOTAL</u>	<u>Internal Service(60)</u>
Cash Flows From Operating Activities					
0011 Cash Receipts From Users	1,324,007			1,324,007	
0012 Cash Receipts From Assessments Made to Other Funds					
0013 Cash Receipts From Earnings on Investments					
0014 Cash Receipts From Other Operating Revenue					
0015 Cash Payments To Employees For Services	500,232			500,232	
0016 Cash Payments For Insurance Claims					
0017 Cash Payments To Suppliers For Goods and Services	1,133,475			1,133,475	
0018 Cash Payments For Other Operating Expenses					
Net Cash Provided By (Used For) Operating Activities	(\$309,700)			(\$309,700)	
Cash Flows From Non-Capital Financing Activities					
0021 Receipts From Local Sources - 6000					
0022 Receipts From State Sources - 7000	183,872			183,872	
0023 Receipts From Federal Sources -8000	642,477			642,477	
0024 Notes and Loans Received (Repaid)					
0025 Interest Paid on Notes/Loans - 5100-830					
0026 Operating Transfers In (Out)/Residual Equity Trans					
0027 Operating Transfers In (Out) Primary Government / Comp Unit					
0028 Receipts From Refund of Prior Year Expenditures - 6991	(3,999)			(3,999)	
0029 Special and Extraordinary Gains (losses)					
0030 Receipts from Insurance Recoveries -9990					
Net Cash Prov By (Used for) Non-Capital Financing Activities	\$822,350			\$822,350	
Cash Flows From Capital and Related Financing Activities					
0031 Payments For Fac Acq, Const, and Imp - 4000	(3,700)			(3,700)	
0032 Gain / (Loss) on Sale of Fixed Assets - 6930					
0033 Proceeds From Extended Term Financing - 9200					
0034 Principal Paid on Financing Agreements					
0035 Interest Paid on Financing Agreements - 5100-830					
0036 (Inc) Dec in Contributed Capital					
Net Cash Prov By (Used for) Capital and Related Financing Activities	(\$3,700)			(\$3,700)	
Cash Flows From Investing Activities					
0041 Earnings on Investments - 6500	6,473			6,473	30,395
0042 Purchase of Inv Securities / Deposits to Inv Pools					
0043 Receipts From Investment Pool Withdrawals	(258,663)			(258,663)	(30,395)
0044 Proceeds from Sale and Maturity of Inv Securities					

LEA : 101631703 Canon-McMillan SD

Printed 10/30/2018 10:38:22 AM

0045 Loans Received (Paid)

Net Cash Prov By (Used for) Investing Activities	(\$252,190)	(\$252,190)
--	-------------	-------------

LEA : 101631703 Canon-McMillan SD

Printed 10/30/2018 10:38:22 AM

	Food Service (51)	Child Care Operations (52)	Other Enterprise (58)	TOTAL	Internal Service (60)
Net Increase (Decrease) in Cash Flows	256,760			256,760	
0004 Cash and Cash Equivalents Beginning of Year	205,720			205,720	
Cash and Cash Equivalents at Year End	\$462,480			\$462,480	
Reconciliation of Operating Income (Loss) To Net Cash Provided by (Used For) Operating Activities					
0005 Operating Income (Loss) per REP	(1,109,371)			(1,109,371)	(735)
Adjustments					
0051 Depreciation and Net Amortization	47,343			47,343	
0052 Provision for Uncollectible Accounts	137,243			137,243	
0053 Other Adjustments					
Effect of Changes in Assets, Liabilities, Deferred Outflows and Deferred Inflows					
0054 (Inc) Dec In Accounts Receivable (0120-0150)	(53,179)			(53,179)	
0055 Advances to Other Funds (0160)	611,874			611,874	
0056 (Inc) Dec in Inventories (0170)	(3,799)			(3,799)	
0057 (Inc) Dec in Prepaid Expenses (0180)					
0058 (Inc) Dec in Other Current or Noncurrent Assets					
0064 Deferred Outflows (0910)					
0059 Inc (Dec) in Accounts Payable (0400-0450)	4,174			4,174	
0060 Inc (Dec) in Accrued Salaries/Benefits (0461)					
0065 Inc (Dec) in Net Pension Liabilities (0570)					
0066 Inc (Dec) in Other Postemp Benefit Oblig (0560)					
0061 Inc (Dec) in Payroll Deductions/Withholding (0462)					
0062 Inc (Dec) in Unearned Revenue (0480)	3,799			3,799	
0063 Inc (Dec) in Other Current or Noncurrent Liabilities	52,216			52,216	
0067 Deferred Inflows (0950)					
Total Adjustments	\$799,671			\$799,671	
Cash Provided By (Used for) Total	(\$309,700)			(\$309,700)	(\$735)

COMBINED STATEMENT OF CASH FLOWS
SCHEDULE OF NONCASH INVESTING, CAPITAL, AND FINANCING ACTIVITIES

Explanation of Transaction and Balance Sheet Effect	Amount
Total	

LEA : 101631703 Canon-McMillan SD

Printed 10/30/2018 10:38:23 AM

Amounts Expressed in Whole Dollars	<u>Private Purpose Trust</u> <u>(71)</u>	<u>Investment Trust</u> <u>(72)</u>	<u>Pension Trust</u> <u>(73)</u>	<u>Activity</u> <u>(81)</u>
Assets And Deferred Outflows Of Resources				
Assets				
0100 Cash and Cash Equivalents	194,558			
0110 Investments				
0130 Due From Other Funds	764			
0147 Due from Component Unit				
0150 Other Receivables				
0170 Inventories				
0180 Prepaid Expenses (Expenditures)				
0190 Other Current Assets				
0220 Buildings and Building Improvements (Net)				
0230 Machinery, Equipment and Furniture (Net)				
Total Assets	\$195,322			
0910 Deferred Outflows of Resources				
Total Assets And Deferred Outflows Of Resources	\$195,322			

LEA : 101631703 Canon-McMillan SD

Printed 10/30/2018 10:38:23 AM

Amounts Expressed in Whole Dollars		<u>Other Agency</u> <u>(89)</u>	<u>Discrete Component Units</u> <u>(98)</u>	<u>Discrete Component Units</u> <u>(99)</u>	<u>Total Fiduciary Funds</u>
Assets And Deferred Outflows Of Resources					
Assets					
0100	Cash and Cash Equivalents				194,558
0110	Investments				
0130	Due From Other Funds				764
0147	Due from Component Unit				
0150	Other Receivables				
0170	Inventories				
0180	Prepaid Expenses (Expenditures)				
0190	Other Current Assets				
0220	Buildings and Building Improvements (Net)				
0230	Machinery, Equipment and Furniture (Net)				
Total Assets					\$195,322
0910	Deferred Outflows of Resources				
Total Assets And Deferred Outflows Of Resources					\$195,322

LEA : 101631703 Canon-McMillan SD

Printed 10/30/2018 10:38:23 AM

Amounts Expressed in Whole Dollars	<u>Private Purpose Trust</u> <u>(71)</u>	<u>Investment Trust</u> <u>(72)</u>	<u>Pension Trust</u> <u>(73)</u>	<u>Activity</u> <u>(81)</u>
Liabilities, Deferred Inflows Of Resources And Net Position				
Liabilities				
0400 Due to Other Funds	764			
0411 Due to Other Governments				
0412 Due to Primary Government				
0413 Due to Component Unit				
0420 Accounts Payable	63			
0430 Contracts Payable				
0450 Short-Term Payables				
0461 Accrued Salaries and Benefits				
0462 Payroll Deductions and Withholding				
0480 Unearned Revenues				
0490 Other Current Liabilities	194,495			
Total Liabilities	\$195,322			
0950 Deferred Inflows of Resources				
Net Position				
0791 Net Investment in Capital Assets				
0009 Restricted Net Position (0792 – 0798)				
0799 Unrestricted Net Position				
Total Net Position				
Total Liabilities, Deferred Inflows Of Resources And Net Position	\$195,322			

LEA : 101631703 Canon-McMillan SD

Printed 10/30/2018 10:38:23 AM

Amounts Expressed in Whole Dollars

<u>Other Agency</u> <u>(89)</u>	<u>Discrete Component Units</u> <u>(98)</u>	<u>Discrete Component Units</u> <u>(99)</u>	<u>Total Fiduciary Funds</u>
------------------------------------	--	--	------------------------------

Liabilities, Deferred Inflows Of Resources And Net Position

Liabilities

0400 Due to Other Funds				764
0411 Due to Other Governments				
0412 Due to Primary Government				
0413 Due to Component Unit				
0420 Accounts Payable				63
0430 Contracts Payable				
0450 Short-Term Payables				
0461 Accrued Salaries and Benefits				
0462 Payroll Deductions and Withholding				
0480 Unearned Revenues				
0490 Other Current Liabilities				194,495

Total Liabilities				\$195,322
--------------------------	--	--	--	------------------

0950 Deferred Inflows of Resources

Net Position

0791 Net Investment in Capital Assets
0009 Restricted Net Position (0792 – 0798)
0799 Unrestricted Net Position

Total Net Position				
---------------------------	--	--	--	--

Total Liabilities, Deferred Inflows Of Resources And Net Position				\$195,322
--	--	--	--	------------------

LEA : 101631703 Canon-McMillan SD

General Fund (10)

Printed 10/30/2018 10:38:24 AM

Page - 1 of 4

	Revenue Reported In Current Year	Current Year Tax Accrual	Prior Year Tax Accrual	Taxes Collected In Current Year
Revenue from Local Sources				
6111 Current Real Estate Taxes	46,225,979.17			46,225,979.17
6112 Interim Real Estate Taxes	544,807.29			544,807.29
6113 Public Utility Realty Taxes	51,942.75			51,942.75
6114 Payments in Lieu of Current Taxes - State / Local	32,499.38			32,499.38
6143 Current Act 511 Local Services Taxes	130,513.12			130,513.12
6151 Current Act 511 Earned Income Taxes	6,678,919.84			6,678,919.84
6153 Current Act 511 Real Estate Transfer Taxes	1,685,177.79			1,685,177.79
6411 Delinquent Real Estate Taxes	888,007.02			888,007.02
6500 Earnings on Investments	302,790.40			
6700 Revenues from LEA Activities	85,107.06			
6831 Federal Revenue Received from Other Pennsylvania Public LEAs	46,493.09			
6832 Federal IDEA Revenue Received as Pass Through	870,195.00			
6910 Rentals	64,664.87			
6920 Contributions and Donations from Private Sources	111,197.05			
6941 Regular Day School Tuition	17,416.74			
6942 Summer School Tuition	83,715.00			
6944 Receipts from Other LEAs in Pennsylvania - Education	903,319.69			
6961 Transportation Services Provided Other Pennsylvania LEAs	27,102.32			
6991 Refunds of a Prior Year Expenditure	229,625.97			
6999 Other Revenues Not Specified Above	168,237.28			
TOTAL Revenue from Local Sources	\$59,147,710.83			\$56,237,846.36

	Revenue Reported In Current Year			
<u>Revenue from State Sources</u>				
7110 Basic Education Funding	11,588,154.77			
7160 Tuition for Orphans Subsidy	25,607.00			
7271 Special Education funds for School-Aged Pupils	2,241,650.50			
7311 Pupil Transportation Subsidy	1,097,044.17			
7312 Nonpublic and Charter School Pupil Transportation Subsidy	148,225.00			
7320 Rental and Sinking Fund Payments / Building Reimbursement Subsidy	455,119.00			
7330 Health Services (Medical, Dental, Nurse, Act 25)	96,908.43			
7340 State Property Tax Reduction Allocation	928,247.10			
7505 Ready to Learn Block Grant	537,616.00			
7810 State Share of Social Security and Medicare Taxes	1,146,413.30			
7820 State Share of Retirement Contributions	5,129,524.61			
TOTAL Revenue from State Sources	\$23,394,509.88			

	Revenue Reported In Current Year			
<u>Revenue from Federal Sources</u>				
8514 NCLB, Title I - Improving the Academic Achievement of the Disadvantaged	492,018.08			
8515 NCLB, Title II - Preparing, Training and Recruiting High Quality Teachers and Principals	104,274.58			
8517 NCLB, Title IV - 21St Century Schools	10,121.87			
8810 School-Based Access Medicaid Reimbursement Program (SBAP) Reimbursements (Access)	56,691.09			
8820 Medical Assistance Reimbursement for Administrative Claiming (Quarterly) Program	6,758.00			
TOTAL Revenue from Federal Sources	\$669,863.62			

	Revenue Reported In Current Year	
<u>Other Financing Sources</u>		
9400 Sale of or Compensation for Loss of Fixed Assets	666,512.06	
TOTAL Other Financing Sources	\$666,512.06	
TOTAL FROM ALL SOURCES	\$83,878,596.39	\$56,237,846.36

Revenue from Local Sources	59,147,710.83
Revenue from State Sources	23,394,509.88
Revenue from Federal Sources	669,863.62
Other Financing Sources	666,512.06
TOTAL FROM ALL SOURCES	\$83,878,596.39

LEA : 101631703 Canon-McMillan SD

Printed 10/30/2018 10:38:27 AM

General Fund (10)

1000 Instruction		Total
100 <u>Personnel Services – Salaries</u>		
100 Personnel Services – Salaries		21,341,417.33
Total Personnel Services – Salaries		\$21,341,417.33
200 <u>Personnel Services – Employee Benefits</u>		
210 Group Insurance – Contracted Provider		5,198,482.60
220 Social Security Contributions		1,605,952.43
230 PSERS Retirement Contributions		6,942,741.15
250 Unemployment Compensation		1,969.51
260 Workers' Compensation		190,315.06
280 Other Post-Employment Benefits (OPEB)		119,956.36
Total Personnel Services – Employee Benefits		\$14,059,417.11
300 <u>Purchased Professional and Technical Services</u>		
322 Professional Educational Services – Ius		1,530,851.39
324 Professional Educational Services – Employee Training and Development Services		11,198.46
330 Other Professional Services		2,670.00
390 Other Purchased Professional and Technical Services		26,235.47
Total Purchased Professional and Technical Services		\$1,570,955.32
400 <u>Purchased Property Services</u>		
430 Repairs and Maintenance Services		11,150.51
Total Purchased Property Services		\$11,150.51
500 <u>Other Purchased Services</u>		
550 Printing and Binding		7,844.06
561 Tuition To Other School Districts Within the State		94,029.75
562 Tuition To Pennsylvania Charter Schools		1,440,845.47
564 Tuition To Career and Technology Centers		621,721.85
567 Tuition To Approved Private Schools (APS) and PA Chartered Schools for the Deaf and Blind		375,065.58
568 Tuition To Private Residential Rehabilitative Institutions (PRRI) [In-State] and Detention Centers		1,034,343.26
580 Travel		13,116.97
594 IU Payment By Withholding for Institutionalized Children's Programs – Special Classes		1,878.95
599 Other Miscellaneous Purchased Services		4,189.40
Total Other Purchased Services		\$3,593,035.29
600 <u>Supplies</u>		
610 General Supplies		600,805.69
640 Books and Periodicals		169,348.69
650 Supplies & Fees – Technology Related		90,556.82
Total Supplies		\$860,711.20
700 <u>Property</u>		
752 Capital Equipment – Original and Additional		286,310.79
Total Property		\$286,310.79
800 <u>Other Objects</u>		
810 Dues and Fees		3,750.50

LEA : 101631703 Canon-McMillan SD

Printed 10/30/2018 10:38:27 AM

General Fund (10)

1000 Instruction		<u>Total</u>
Total Other Objects		\$3,750.50
Total 1000 Instruction		\$41,726,748.05

LEA : 101631703 Canon-McMillan SD

Printed 10/30/2018 10:38:27 AM

General Fund (10)

1100 Regular Programs – Elementary / Secondary	Elementary	Secondary	Federal	Total
100 Personnel Services – Salaries				
100 Personnel Services – Salaries	8,911,829.01	6,719,269.30	271,897.37	15,902,995.68
Total Personnel Services – Salaries	\$8,911,829.01	\$6,719,269.30	\$271,897.37	\$15,902,995.68
200 Personnel Services – Employee Benefits				
210 Group Insurance – Contracted Provider	2,114,634.45	1,391,256.82	61,515.37	3,567,406.64
220 Social Security Contributions	670,869.23	507,282.87	20,339.98	1,198,492.08
230 PSERS Retirement Contributions	2,912,731.15	2,178,260.72	88,557.14	5,179,549.01
250 Unemployment Compensation		1,969.51		1,969.51
260 Workers' Compensation	79,439.27	59,998.57	2,419.74	141,857.58
280 Other Post-Employment Benefits (OPEB)	59,954.46	39,091.20		99,045.66
Total Personnel Services – Employee Benefits	\$5,837,628.56	\$4,177,859.69	\$172,832.23	\$10,188,320.48
300 Purchased Professional and Technical Services				
322 Professional Educational Services – Ius	166,258.17	58,399.23		224,657.40
324 Professional Educational Services – Employee Training and Development Services	6,939.94	3,567.00		10,506.94
330 Other Professional Services	2,670.00			2,670.00
Total Purchased Professional and Technical Services	\$175,868.11	\$61,966.23		\$237,834.34
400 Purchased Property Services				
430 Repairs and Maintenance Services	358.36	7,590.68		7,949.04
Total Purchased Property Services	\$358.36	\$7,590.68		\$7,949.04
500 Other Purchased Services				
550 Printing and Binding	3,366.48	4,477.58		7,844.06
561 Tuition To Other School Districts Within the State	1,935.45	29,049.88		30,985.33
562 Tuition To Pennsylvania Charter Schools	187,475.77	768,496.38		955,972.15
568 Tuition To Private Residential Rehabilitative Institutions (PRRI) [In-State] and Detention Centers	19,362.29	20,975.82		40,338.11
580 Travel	4,628.72	6,461.31		11,090.03
599 Other Miscellaneous Purchased Services	1,422.15	2,767.25		4,189.40
Total Other Purchased Services	\$218,190.86	\$832,228.22		\$1,050,419.08
600 Supplies				
610 General Supplies	261,924.42	128,811.48	120,064.65	510,800.55
640 Books and Periodicals	97,911.94	62,191.52		160,103.46
650 Supplies & Fees – Technology Related	42,586.27	36,674.55		79,260.82
Total Supplies	\$402,422.63	\$227,677.55	\$120,064.65	\$750,164.83
700 Property				
752 Capital Equipment – Original and Additional	116,376.95	161,162.55		277,539.50
Total Property	\$116,376.95	\$161,162.55		\$277,539.50
800 Other Objects				
810 Dues and Fees	272.00			272.00
Total Other Objects	\$272.00			\$272.00
Total 1100 Regular Programs – Elementary / Secondary	\$15,662,946.48	\$12,187,754.22	\$564,794.25	\$28,415,494.95

LEA : 101631703 Canon-McMillan SD

Printed 10/30/2018 10:38:27 AM

General Fund (10)

1110 Regular Programs	Elementary	Secondary	Federal	Total
100 <u>Personnel Services – Salaries</u>				
100 Personnel Services – Salaries	8,911,829.01	6,719,269.30		15,631,098.31
Total Personnel Services – Salaries	\$8,911,829.01	\$6,719,269.30		\$15,631,098.31
200 <u>Personnel Services – Employee Benefits</u>				
210 Group Insurance – Contracted Provider	2,114,634.45	1,391,256.82		3,505,891.27
220 Social Security Contributions	670,869.23	507,282.87		1,178,152.10
230 PSERS Retirement Contributions	2,912,731.15	2,178,260.72		5,090,991.87
250 Unemployment Compensation		1,969.51		1,969.51
260 Workers' Compensation	79,439.27	59,998.57		139,437.84
280 Other Post-Employment Benefits (OPEB)	59,954.46	39,091.20		99,045.66
Total Personnel Services – Employee Benefits	\$5,837,628.56	\$4,177,859.69		\$10,015,488.25
300 <u>Purchased Professional and Technical Services</u>				
322 Professional Educational Services – Ius	166,258.17	58,399.23		224,657.40
324 Professional Educational Services – Employee Training and Development Services	6,939.94	3,567.00		10,506.94
330 Other Professional Services	2,670.00			2,670.00
Total Purchased Professional and Technical Services	\$175,868.11	\$61,966.23		\$237,834.34
400 <u>Purchased Property Services</u>				
430 Repairs and Maintenance Services	358.36	7,590.68		7,949.04
Total Purchased Property Services	\$358.36	\$7,590.68		\$7,949.04
500 <u>Other Purchased Services</u>				
550 Printing and Binding	3,366.48	4,477.58		7,844.06
561 Tuition To Other School Districts Within the State	1,935.45	29,049.88		30,985.33
562 Tuition To Pennsylvania Charter Schools	187,475.77	768,496.38		955,972.15
568 Tuition To Private Residential Rehabilitative Institutions (PRRI) [In-State] and Detention Centers	19,362.29	20,975.82		40,338.11
580 Travel	4,628.72	6,461.31		11,090.03
599 Other Miscellaneous Purchased Services	1,422.15	2,767.25		4,189.40
Total Other Purchased Services	\$218,190.86	\$832,228.22		\$1,050,419.08
600 <u>Supplies</u>				
610 General Supplies	261,924.42	128,811.48		390,735.90
640 Books and Periodicals	97,911.94	62,191.52		160,103.46
650 Supplies & Fees – Technology Related	42,586.27	36,674.55		79,260.82
Total Supplies	\$402,422.63	\$227,677.55		\$630,100.18
700 <u>Property</u>				
752 Capital Equipment – Original and Additional	116,376.95	161,162.55		277,539.50
Total Property	\$116,376.95	\$161,162.55		\$277,539.50
800 <u>Other Objects</u>				
810 Dues and Fees	272.00			272.00
Total Other Objects	\$272.00			\$272.00
Total 1110 Regular Programs	\$15,662,946.48	\$12,187,754.22		\$27,850,700.70

LEA : 101631703 Canon-McMillan SD

Printed 10/30/2018 10:38:27 AM

General Fund (10)

1190 Federally-Funded Regular Programs

	<u>Elementary</u>	<u>Secondary</u>	<u>Federal</u>	<u>Total</u>
100 <u>Personnel Services – Salaries</u>				
100 Personnel Services – Salaries			271,897.37	271,897.37
Total Personnel Services – Salaries			\$271,897.37	\$271,897.37
200 <u>Personnel Services – Employee Benefits</u>				
210 Group Insurance – Contracted Provider			61,515.37	61,515.37
220 Social Security Contributions			20,339.98	20,339.98
230 PSERS Retirement Contributions			88,557.14	88,557.14
260 Workers' Compensation			2,419.74	2,419.74
Total Personnel Services – Employee Benefits			\$172,832.23	\$172,832.23
600 <u>Supplies</u>				
610 General Supplies			120,064.65	120,064.65
Total Supplies			\$120,064.65	\$120,064.65
Total 1190 Federally-Funded Regular Programs			\$564,794.25	\$564,794.25

LEA : 101631703 Canon-McMillan SD

Printed 10/30/2018 10:38:27 AM

General Fund (10)				
1200 Special Programs – Elementary / Secondary	<u>Elementary</u>	<u>Secondary</u>	<u>Federal</u>	<u>Total</u>
100 <u>Personnel Services – Salaries</u>				
100 Personnel Services – Salaries	2,957,312.58	1,429,204.82		4,386,517.40
Total Personnel Services – Salaries	\$2,957,312.58	\$1,429,204.82		\$4,386,517.40
200 <u>Personnel Services – Employee Benefits</u>				
210 Group Insurance – Contracted Provider	1,007,870.16	381,029.72		1,388,899.88
220 Social Security Contributions	220,805.58	107,323.25		328,128.83
230 PSERS Retirement Contributions	956,504.32	464,082.63		1,420,586.95
260 Workers' Compensation	26,364.27	12,751.60		39,115.87
280 Other Post-Employment Benefits (OPEB)	5,464.44	2,732.22		8,196.66
Total Personnel Services – Employee Benefits	\$2,217,008.77	\$967,919.42		\$3,184,928.19
300 <u>Purchased Professional and Technical Services</u>				
322 Professional Educational Services – lus	164,664.64	164,664.64	961,618.33	1,290,947.61
324 Professional Educational Services – Employee Training and Development Services	448.93	242.59		691.52
Total Purchased Professional and Technical Services	\$165,113.57	\$164,907.23	\$961,618.33	\$1,291,639.13
400 <u>Purchased Property Services</u>				
430 Repairs and Maintenance Services		588.90		588.90
Total Purchased Property Services		\$588.90		\$588.90
500 <u>Other Purchased Services</u>				
562 Tuition To Pennsylvania Charter Schools	101,596.32	383,277.00		484,873.32
567 Tuition To Approved Private Schools (APS) and PA Chartered Schools for the Deaf and Blind	180,031.48	195,034.10		375,065.58
568 Tuition To Private Residential Rehabilitative Institutions (PRRI) [In-State] and Detention Centers	462,235.36	501,707.21		963,942.57
580 Travel	1,067.35	671.50		1,738.85
594 IU Payment By Withholding for Institutionalized Children's Programs – Special Classes	939.47	939.48		1,878.95
Total Other Purchased Services	\$745,869.98	\$1,081,629.29		\$1,827,499.27
600 <u>Supplies</u>				
610 General Supplies	32,597.54	12,998.32		45,595.86
640 Books and Periodicals	4,174.30	2,251.47		6,425.77
650 Supplies & Fees – Technology Related			11,296.00	11,296.00
Total Supplies	\$36,771.84	\$15,249.79	\$11,296.00	\$63,317.63
700 <u>Property</u>				
752 Capital Equipment – Original and Additional	5,725.69	3,045.60		8,771.29
Total Property	\$5,725.69	\$3,045.60		\$8,771.29
800 <u>Other Objects</u>				
810 Dues and Fees	2,118.00	1,360.50		3,478.50
Total Other Objects	\$2,118.00	\$1,360.50		\$3,478.50
Total 1200 Special Programs – Elementary / Secondary	\$6,129,920.43	\$3,663,905.55	\$972,914.33	\$10,766,740.31

LEA : 101631703 Canon-McMillan SD

Printed 10/30/2018 10:38:27 AM

General Fund (10)				
1210 Life Skills Support	<u>Elementary</u>	<u>Secondary</u>	<u>Federal</u>	<u>Total</u>
100 <u>Personnel Services – Salaries</u>				
100 Personnel Services – Salaries	77,270.31	24,412.50		101,682.81
Total Personnel Services – Salaries	\$77,270.31	\$24,412.50		\$101,682.81
200 <u>Personnel Services – Employee Benefits</u>				
210 Group Insurance – Contracted Provider	8,651.36	6,176.32		14,827.68
220 Social Security Contributions	5,817.29	1,801.27		7,618.56
230 PSERS Retirement Contributions	25,166.94	7,951.23		33,118.17
260 Workers' Compensation	696.49	218.75		915.24
Total Personnel Services – Employee Benefits	\$40,332.08	\$16,147.57		\$56,479.65
300 <u>Purchased Professional and Technical Services</u>				
324 Professional Educational Services – Employee Training and Development Services	37.50	37.50		75.00
Total Purchased Professional and Technical Services	\$37.50	\$37.50		\$75.00
500 <u>Other Purchased Services</u>				
580 Travel	352.50	352.50		705.00
Total Other Purchased Services	\$352.50	\$352.50		\$705.00
600 <u>Supplies</u>				
610 General Supplies	3,199.70	1,762.09		4,961.79
640 Books and Periodicals		389.45		389.45
Total Supplies	\$3,199.70	\$2,151.54		\$5,351.24
800 <u>Other Objects</u>				
810 Dues and Fees		708.00		708.00
Total Other Objects		\$708.00		\$708.00
Total 1210 Life Skills Support	\$121,192.09	\$43,809.61		\$165,001.70

LEA : 101631703 Canon-McMillan SD

Printed 10/30/2018 10:38:27 AM

General Fund (10)				
1220 Sensory Support	<u>Elementary</u>	<u>Secondary</u>	<u>Federal</u>	<u>Total</u>
100 <u>Personnel Services – Salaries</u>				
100 Personnel Services – Salaries	336,958.82			336,958.82
Total Personnel Services – Salaries	\$336,958.82			\$336,958.82
200 <u>Personnel Services – Employee Benefits</u>				
210 Group Insurance – Contracted Provider	78,344.74	1,611.26		79,956.00
220 Social Security Contributions	25,288.03			25,288.03
230 PSERS Retirement Contributions	109,448.85			109,448.85
260 Workers' Compensation	3,004.63			3,004.63
Total Personnel Services – Employee Benefits	\$216,086.25	\$1,611.26		\$217,697.51
300 <u>Purchased Professional and Technical Services</u>				
324 Professional Educational Services – Employee Training and Development Services	206.33			206.33
Total Purchased Professional and Technical Services	\$206.33			\$206.33
500 <u>Other Purchased Services</u>				
580 Travel	349.32			349.32
Total Other Purchased Services	\$349.32			\$349.32
600 <u>Supplies</u>				
610 General Supplies	788.07	354.14		1,142.21
Total Supplies	\$788.07	\$354.14		\$1,142.21
800 <u>Other Objects</u>				
810 Dues and Fees	1,125.00			1,125.00
Total Other Objects	\$1,125.00			\$1,125.00
Total 1220 Sensory Support	\$555,513.79	\$1,965.40		\$557,479.19

LEA : 101631703 Canon-McMillan SD

Printed 10/30/2018 10:38:27 AM

General Fund (10)				
1230 Emotional Support	<u>Elementary</u>	<u>Secondary</u>	<u>Federal</u>	<u>Total</u>
100 <u>Personnel Services – Salaries</u>				
100 Personnel Services – Salaries	359,714.66	90,021.23		449,735.89
Total Personnel Services – Salaries	\$359,714.66	\$90,021.23		\$449,735.89
200 <u>Personnel Services – Employee Benefits</u>				
210 Group Insurance – Contracted Provider	120,470.84	39,232.13		159,702.97
220 Social Security Contributions	26,753.54	6,664.95		33,418.49
230 PSERS Retirement Contributions	116,286.87	29,319.75		145,606.62
260 Workers' Compensation	3,217.21	799.10		4,016.31
Total Personnel Services – Employee Benefits	\$266,728.46	\$76,015.93		\$342,744.39
500 <u>Other Purchased Services</u>				
580 Travel	124.66			124.66
Total Other Purchased Services	\$124.66			\$124.66
600 <u>Supplies</u>				
610 General Supplies	3,882.48			3,882.48
640 Books and Periodicals	1,511.75			1,511.75
Total Supplies	\$5,394.23			\$5,394.23
700 <u>Property</u>				
752 Capital Equipment – Original and Additional	3,618.49			3,618.49
Total Property	\$3,618.49			\$3,618.49
Total 1230 Emotional Support	\$635,580.50	\$166,037.16		\$801,617.66

LEA : 101631703 Canon-McMillan SD

Printed 10/30/2018 10:38:27 AM

General Fund (10)					
1240 Academic Support		Elementary	Secondary	Federal	Total
100 Personnel Services – Salaries					
100 Personnel Services – Salaries		2,138,139.98	1,314,771.09		3,452,911.07
Total Personnel Services – Salaries		\$2,138,139.98	\$1,314,771.09		\$3,452,911.07
200 Personnel Services – Employee Benefits					
210 Group Insurance – Contracted Provider		800,403.22	334,010.01		1,134,413.23
220 Social Security Contributions		159,536.89	98,857.03		258,393.92
230 PSERS Retirement Contributions		691,081.96	426,811.65		1,117,893.61
260 Workers' Compensation		19,130.65	11,733.75		30,864.40
280 Other Post-Employment Benefits (OPEB)		5,464.44	2,732.22		8,196.66
Total Personnel Services – Employee Benefits		\$1,675,617.16	\$874,144.66		\$2,549,761.82
300 Purchased Professional and Technical Services					
324 Professional Educational Services – Employee Training and Development Services		205.10	205.09		410.19
Total Purchased Professional and Technical Services		\$205.10	\$205.09		\$410.19
500 Other Purchased Services					
580 Travel		240.87	319.00		559.87
Total Other Purchased Services		\$240.87	\$319.00		\$559.87
600 Supplies					
610 General Supplies		10,304.12	2,847.74		13,151.86
640 Books and Periodicals		2,662.55	1,862.02		4,524.57
Total Supplies		\$12,966.67	\$4,709.76		\$17,676.43
800 Other Objects					
810 Dues and Fees		843.00	502.50		1,345.50
Total Other Objects		\$843.00	\$502.50		\$1,345.50
Total 1240 Academic Support		\$3,828,012.78	\$2,194,652.10		\$6,022,664.88

LEA : 101631703 Canon-McMillan SD

Printed 10/30/2018 10:38:27 AM

General Fund (10)				
1241 Learning Support – Public	<u>Elementary</u>	<u>Secondary</u>	<u>Federal</u>	<u>Total</u>
100 <u>Personnel Services – Salaries</u>				
100 Personnel Services – Salaries	2,025,439.98	1,096,358.60		3,121,798.58
Total Personnel Services – Salaries	\$2,025,439.98	\$1,096,358.60		\$3,121,798.58
200 <u>Personnel Services – Employee Benefits</u>				
210 Group Insurance – Contracted Provider	761,795.98	316,789.85		1,078,585.83
220 Social Security Contributions	151,156.04	82,323.83		233,479.87
230 PSERS Retirement Contributions	654,375.68	355,674.60		1,010,050.28
260 Workers' Compensation	18,126.37	9,785.15		27,911.52
280 Other Post-Employment Benefits (OPEB)	5,464.44	2,732.22		8,196.66
Total Personnel Services – Employee Benefits	\$1,590,918.51	\$767,305.65		\$2,358,224.16
300 <u>Purchased Professional and Technical Services</u>				
324 Professional Educational Services – Employee Training and Development Services	205.10	205.09		410.19
Total Purchased Professional and Technical Services	\$205.10	\$205.09		\$410.19
500 <u>Other Purchased Services</u>				
580 Travel	98.87			98.87
Total Other Purchased Services	\$98.87			\$98.87
600 <u>Supplies</u>				
610 General Supplies	5,567.48	2,505.68		8,073.16
640 Books and Periodicals	2,662.55	1,862.02		4,524.57
Total Supplies	\$8,230.03	\$4,367.70		\$12,597.73
Total 1241 Learning Support – Public	\$3,624,892.49	\$1,868,237.04		\$5,493,129.53

LEA : 101631703 Canon-McMillan SD

Printed 10/30/2018 10:38:27 AM

General Fund (10)				
1243 Gifted Support	<u>Elementary</u>	<u>Secondary</u>	<u>Federal</u>	<u>Total</u>
100 <u>Personnel Services – Salaries</u>				
100 Personnel Services – Salaries	112,700.00	218,412.49		331,112.49
Total Personnel Services – Salaries	\$112,700.00	\$218,412.49		\$331,112.49
200 <u>Personnel Services – Employee Benefits</u>				
210 Group Insurance – Contracted Provider	38,607.24	17,220.16		55,827.40
220 Social Security Contributions	8,380.85	16,533.20		24,914.05
230 PSERS Retirement Contributions	36,706.28	71,137.05		107,843.33
260 Workers' Compensation	1,004.28	1,948.60		2,952.88
Total Personnel Services – Employee Benefits	\$84,698.65	\$106,839.01		\$191,537.66
500 <u>Other Purchased Services</u>				
580 Travel	142.00	319.00		461.00
Total Other Purchased Services	\$142.00	\$319.00		\$461.00
600 <u>Supplies</u>				
610 General Supplies	4,736.64	342.06		5,078.70
Total Supplies	\$4,736.64	\$342.06		\$5,078.70
800 <u>Other Objects</u>				
810 Dues and Fees	843.00	502.50		1,345.50
Total Other Objects	\$843.00	\$502.50		\$1,345.50
Total 1243 Gifted Support	\$203,120.29	\$326,415.06		\$529,535.35

LEA : 101631703 Canon-McMillan SD

Printed 10/30/2018 10:38:27 AM

General Fund (10)				
1290 Special Programs - Other Support	<u>Elementary</u>	<u>Secondary</u>	<u>Federal</u>	<u>Total</u>
100 <u>Personnel Services – Salaries</u>				
100 Personnel Services – Salaries	45,228.81			45,228.81
Total Personnel Services – Salaries	\$45,228.81			\$45,228.81
200 <u>Personnel Services – Employee Benefits</u>				
220 Social Security Contributions	3,409.83			3,409.83
230 PSERS Retirement Contributions	14,519.70			14,519.70
260 Workers’ Compensation	315.29			315.29
Total Personnel Services – Employee Benefits	\$18,244.82			\$18,244.82
300 <u>Purchased Professional and Technical Services</u>				
322 Professional Educational Services – Ius	164,664.64	164,664.64	961,618.33	1,290,947.61
Total Purchased Professional and Technical Services	\$164,664.64	\$164,664.64	\$961,618.33	\$1,290,947.61
400 <u>Purchased Property Services</u>				
430 Repairs and Maintenance Services		588.90		588.90
Total Purchased Property Services		\$588.90		\$588.90
500 <u>Other Purchased Services</u>				
562 Tuition To Pennsylvania Charter Schools	101,596.32	383,277.00		484,873.32
567 Tuition To Approved Private Schools (APS) and PA Chartered Schools for the Deaf and Blind	180,031.48	195,034.10		375,065.58
568 Tuition To Private Residential Rehabilitative Institutions (PRRI) [In-State] and Detention Centers	462,235.36	501,707.21		963,942.57
594 IU Payment By Withholding for Institutionalized Children’s Programs – Special Classes	939.47	939.48		1,878.95
Total Other Purchased Services	\$744,802.63	\$1,080,957.79		\$1,825,760.42
600 <u>Supplies</u>				
610 General Supplies	14,423.17	8,034.35		22,457.52
650 Supplies & Fees – Technology Related			11,296.00	11,296.00
Total Supplies	\$14,423.17	\$8,034.35	\$11,296.00	\$33,753.52
700 <u>Property</u>				
752 Capital Equipment – Original and Additional	2,107.20	3,045.60		5,152.80
Total Property	\$2,107.20	\$3,045.60		\$5,152.80
800 <u>Other Objects</u>				
810 Dues and Fees	150.00	150.00		300.00
Total Other Objects	\$150.00	\$150.00		\$300.00
Total 1290 Special Programs - Other Support	\$989,621.27	\$1,257,441.28	\$972,914.33	\$3,219,976.88

LEA : 101631703 Canon-McMillan SD

Printed 10/30/2018 10:38:27 AM

General Fund (10)				
1300 Vocational Education	<u>Elementary</u>	<u>Secondary</u>	<u>Federal</u>	<u>Total</u>
100 <u>Personnel Services – Salaries</u>				
100 Personnel Services – Salaries		977,450.00		977,450.00
Total Personnel Services – Salaries		\$977,450.00		\$977,450.00
200 <u>Personnel Services – Employee Benefits</u>				
210 Group Insurance – Contracted Provider		242,176.08		242,176.08
220 Social Security Contributions		73,679.67		73,679.67
230 PSERS Retirement Contributions		318,355.50		318,355.50
260 Workers' Compensation		8,710.87		8,710.87
280 Other Post-Employment Benefits (OPEB)		12,714.04		12,714.04
Total Personnel Services – Employee Benefits		\$655,636.16		\$655,636.16
400 <u>Purchased Property Services</u>				
430 Repairs and Maintenance Services		2,612.57		2,612.57
Total Purchased Property Services		\$2,612.57		\$2,612.57
500 <u>Other Purchased Services</u>				
564 Tuition To Career and Technology Centers		472,371.85		472,371.85
580 Travel		288.09		288.09
Total Other Purchased Services		\$472,659.94		\$472,659.94
600 <u>Supplies</u>				
610 General Supplies		44,113.28		44,113.28
640 Books and Periodicals		2,819.46		2,819.46
Total Supplies		\$46,932.74		\$46,932.74
Total 1300 Vocational Education		\$2,155,291.41		\$2,155,291.41

LEA : 101631703 Canon-McMillan SD

Printed 10/30/2018 10:38:27 AM

General Fund (10)

1400 Other Instructional Programs – Elementary / Secondary	Elementary	Secondary	Federal	Total
100 Personnel Services – Salaries				
100 Personnel Services – Salaries	25,365.75	49,088.50		74,454.25
Total Personnel Services – Salaries	\$25,365.75	\$49,088.50		\$74,454.25
200 Personnel Services – Employee Benefits				
220 Social Security Contributions	1,918.52	3,733.33		5,651.85
230 PSERS Retirement Contributions	8,261.59	15,988.10		24,249.69
260 Workers’ Compensation	237.97	392.77		630.74
Total Personnel Services – Employee Benefits	\$10,418.08	\$20,114.20		\$30,532.28
300 Purchased Professional and Technical Services				
390 Other Purchased Professional and Technical Services		26,235.47		26,235.47
Total Purchased Professional and Technical Services		\$26,235.47		\$26,235.47
500 Other Purchased Services				
561 Tuition To Other School Districts Within the State	20,092.52	42,951.90		63,044.42
564 Tuition To Career and Technology Centers	71,688.00	77,662.00		149,350.00
568 Tuition To Private Residential Rehabilitative Institutions (PRRI) [In-State] and Detention Centers	1,080.60	28,981.98		30,062.58
Total Other Purchased Services	\$92,861.12	\$149,595.88		\$242,457.00
Total 1400 Other Instructional Programs – Elementary / Secondary	\$128,644.95	\$245,034.05		\$373,679.00

LEA : 101631703 Canon-McMillan SD

Printed 10/30/2018 10:38:27 AM

General Fund (10)

1420 Summer School

	<u>Elementary</u>	<u>Secondary</u>	<u>Federal</u>	<u>Total</u>
100 <u>Personnel Services – Salaries</u>				
100 Personnel Services – Salaries		29,620.50		29,620.50
Total Personnel Services – Salaries		\$29,620.50		\$29,620.50
200 <u>Personnel Services – Employee Benefits</u>				
220 Social Security Contributions		2,252.28		2,252.28
230 PSERS Retirement Contributions		9,647.39		9,647.39
260 Workers’ Compensation		211.45		211.45
Total Personnel Services – Employee Benefits		\$12,111.12		\$12,111.12
Total 1420 Summer School		\$41,731.62		\$41,731.62

LEA : 101631703 Canon-McMillan SD

Printed 10/30/2018 10:38:27 AM

General Fund (10)

1430 Homebound Instruction	<u>Elementary</u>	<u>Secondary</u>	<u>Federal</u>	<u>Total</u>
100 <u>Personnel Services – Salaries</u>				
100 Personnel Services – Salaries	11,113.50	14,880.00		25,993.50
Total Personnel Services – Salaries	\$11,113.50	\$14,880.00		\$25,993.50
200 <u>Personnel Services – Employee Benefits</u>				
220 Social Security Contributions	844.71	1,135.18		1,979.89
230 PSERS Retirement Contributions	3,619.70	4,846.40		8,466.10
260 Workers’ Compensation	104.34	138.28		242.62
Total Personnel Services – Employee Benefits	\$4,568.75	\$6,119.86		\$10,688.61
Total 1430 Homebound Instruction	\$15,682.25	\$20,999.86		\$36,682.11

LEA : 101631703 Canon-McMillan SD

Printed 10/30/2018 10:38:27 AM

General Fund (10)				
1440 Alternative Regular Education Programs	<u>Elementary</u>	<u>Secondary</u>	<u>Federal</u>	<u>Total</u>
300 <u>Purchased Professional and Technical Services</u>				
390 Other Purchased Professional and Technical Services		26,235.47		26,235.47
Total Purchased Professional and Technical Services		\$26,235.47		\$26,235.47
500 <u>Other Purchased Services</u>				
561 Tuition To Other School Districts Within the State	20,092.52	42,951.90		63,044.42
564 Tuition To Career and Technology Centers	71,688.00	77,662.00		149,350.00
568 Tuition To Private Residential Rehabilitative Institutions (PRRI) [In-State] and Detention Centers	1,080.60	28,981.98		30,062.58
Total Other Purchased Services	\$92,861.12	\$149,595.88		\$242,457.00
Total 1440 Alternative Regular Education Programs	\$92,861.12	\$175,831.35		\$268,692.47

LEA : 101631703 Canon-McMillan SD

Printed 10/30/2018 10:38:27 AM

General Fund (10)				
1441 Adjudicated / Court-Placed Programs	<u>Elementary</u>	<u>Secondary</u>	<u>Federal</u>	<u>Total</u>
300 <u>Purchased Professional and Technical Services</u>				
390 Other Purchased Professional and Technical Services		26,235.47		26,235.47
Total Purchased Professional and Technical Services		\$26,235.47		\$26,235.47
500 <u>Other Purchased Services</u>				
561 Tuition To Other School Districts Within the State	20,092.52	42,951.90		63,044.42
568 Tuition To Private Residential Rehabilitative Institutions (PRRI) [In-State] and Detention Centers		6,186.98		6,186.98
Total Other Purchased Services	\$20,092.52	\$49,138.88		\$69,231.40
Total 1441 Adjudicated / Court-Placed Programs	\$20,092.52	\$75,374.35		\$95,466.87

LEA : 101631703 Canon-McMillan SD

Printed 10/30/2018 10:38:27 AM

General Fund (10)				
1442 Alternative Education Programs	<u>Elementary</u>	<u>Secondary</u>	<u>Federal</u>	<u>Total</u>
500 <u>Other Purchased Services</u>				
564 Tuition To Career and Technology Centers	71,688.00	77,662.00		149,350.00
568 Tuition To Private Residential Rehabilitative Institutions (PRRI) [In-State] and Detention Centers	1,080.60	22,795.00		23,875.60
Total Other Purchased Services	\$72,768.60	\$100,457.00		\$173,225.60
Total 1442 Alternative Education Programs	\$72,768.60	\$100,457.00		\$173,225.60

LEA : 101631703 Canon-McMillan SD

Printed 10/30/2018 10:38:27 AM

General Fund (10)

1450 Instructional Programs Outside the Established School Day	<u>Elementary</u>	<u>Secondary</u>	<u>Federal</u>	<u>Total</u>
100 <u>Personnel Services – Salaries</u>				
100 Personnel Services – Salaries	14,252.25	4,588.00		18,840.25
Total Personnel Services – Salaries	\$14,252.25	\$4,588.00		\$18,840.25
200 <u>Personnel Services – Employee Benefits</u>				
220 Social Security Contributions	1,073.81	345.87		1,419.68
230 PSERS Retirement Contributions	4,641.89	1,494.31		6,136.20
260 Workers’ Compensation	133.63	43.04		176.67
Total Personnel Services – Employee Benefits	\$5,849.33	\$1,883.22		\$7,732.55
Total 1450 Instructional Programs Outside the Established School Day	\$20,101.58	\$6,471.22		\$26,572.80

LEA : 101631703 Canon-McMillan SD

Printed 10/30/2018 10:38:27 AM

General Fund (10)

1500 Nonpublic School Programs	<u>Elementary</u>	<u>Secondary</u>	<u>Federal</u>	<u>Total</u>
300 <u>Purchased Professional and Technical Services</u>				
322 Professional Educational Services – lus			15,246.38	15,246.38
Total Purchased Professional and Technical Services			\$15,246.38	\$15,246.38
600 <u>Supplies</u>				
610 General Supplies			296.00	296.00
Total Supplies			\$296.00	\$296.00
Total 1500 Nonpublic School Programs			\$15,542.38	\$15,542.38

LEA : 101631703 Canon-McMillan SD

Printed 10/30/2018 10:38:31 AM

General Fund (10)

2000 Support Services		Total
100 <u>Personnel Services – Salaries</u>		
100 Personnel Services – Salaries		9,485,572.73
Total Personnel Services – Salaries		\$9,485,572.73
200 <u>Personnel Services – Employee Benefits</u>		
210 Group Insurance – Contracted Provider		2,439,177.08
220 Social Security Contributions		710,374.85
230 PSERS Retirement Contributions		3,047,534.56
240 Tuition Reimbursement		142,426.05
250 Unemployment Compensation		12,704.99
260 Workers' Compensation		83,720.94
280 Other Post-Employment Benefits (OPEB)		6,375.64
291 Other Retirement Plans		1,750.00
Total Personnel Services – Employee Benefits		\$6,444,064.11
300 <u>Purchased Professional and Technical Services</u>		
310 Official / Administrative Services		41,435.00
322 Professional Educational Services – Ius		575,274.15
324 Professional Educational Services – Employee Training and Development Services		25,633.58
329 Professional Educational Services – Other		288,383.56
330 Other Professional Services		1,470,264.32
340 Technical Services		14,055.21
350 Security / Safety Services		224,912.96
Total Purchased Professional and Technical Services		\$2,639,958.78
400 <u>Purchased Property Services</u>		
410 Cleaning Services		98,406.11
420 Utility Services		214,804.44
430 Repairs and Maintenance Services		317,541.31
440 Rentals		128,649.63
460 Extermination Services		5,728.32
Total Purchased Property Services		\$765,129.81
500 <u>Other Purchased Services</u>		
513 Contracted Carriers		2,116,821.64
516 Student Transportation Services From the IU		66,843.74
520 Insurance – General		47,194.50
521 Fire Insurance		75,568.00
522 Automotive Liability Insurance		70,699.00
523 General Property and Liability Insurance		73,107.00
529 Other Insurance		661.50
530 Communications		246,808.89
549 Other Advertising/Public Relations		18,235.76
550 Printing and Binding		3,075.51
580 Travel		60,347.94
595 IU Payments By Withholding		80,528.13
Total Other Purchased Services		\$2,859,891.61

LEA : 101631703 Canon-McMillan SD

Printed 10/30/2018 10:38:31 AM

General Fund (10)

2000 Support Services

Total

600	<u>Supplies</u>	
610	General Supplies	585,660.85
620	Energy	1,339,799.33
630	Food	3,515.70
640	Books and Periodicals	39,407.39
650	Supplies & Fees – Technology Related	136,317.17
Total Supplies		\$2,104,700.44
700	<u>Property</u>	
752	Capital Equipment – Original and Additional	271,315.26
756	Capitalized Technology Hardware and Equipment– Original	7,480.00
762	Capitalized Equipment - Replacement	380,255.00
Total Property		\$659,050.26
800	<u>Other Objects</u>	
810	Dues and Fees	73,821.61
890	Miscellaneous Expenditures	25,206.14
899	Pass-Through Funds	855,705.40
Total Other Objects		\$954,733.15
Total 2000 Support Services		\$25,913,100.89

LEA : 101631703 Canon-McMillan SD

Printed 10/30/2018 10:38:31 AM

General Fund (10)				
2100 Support Services – Students	<u>Elementary</u>	<u>Secondary</u>	<u>Federal</u>	<u>Total</u>
100 <u>Personnel Services – Salaries</u>				
100 Personnel Services – Salaries	504,751.61	607,054.19		1,163,364.51
Total Personnel Services – Salaries	\$504,751.61	\$607,054.19		\$1,163,364.51
200 <u>Personnel Services – Employee Benefits</u>				
210 Group Insurance – Contracted Provider	106,773.12	138,720.74		264,223.21
220 Social Security Contributions	38,069.34	45,787.45		87,720.79
230 PSERS Retirement Contributions	163,764.51	197,132.94		377,690.01
260 Workers' Compensation	4,502.94	5,382.83		10,343.24
Total Personnel Services – Employee Benefits	\$313,109.91	\$387,023.96		\$739,977.25
300 <u>Purchased Professional and Technical Services</u>				
324 Professional Educational Services – Employee Training and Development Services	346.59	346.58		693.17
329 Professional Educational Services – Other	127,866.97	138,522.55		266,389.52
330 Other Professional Services	178,829.44	186,031.16		364,860.60
Total Purchased Professional and Technical Services	\$307,043.00	\$324,900.29		\$631,943.29
500 <u>Other Purchased Services</u>				
530 Communications	6,035.11	4,216.51		10,251.62
550 Printing and Binding	1,092.77	271.74		1,364.51
580 Travel	1,779.70	1,641.32		3,421.02
Total Other Purchased Services	\$8,907.58	\$6,129.57		\$15,037.15
600 <u>Supplies</u>				
610 General Supplies	5,962.81	3,005.17		8,967.98
Total Supplies	\$5,962.81	\$3,005.17		\$8,967.98
700 <u>Property</u>				
752 Capital Equipment – Original and Additional	256.24			256.24
Total Property	\$256.24			\$256.24
800 <u>Other Objects</u>				
810 Dues and Fees	458.25	394.25		852.50
Total Other Objects	\$458.25	\$394.25		\$852.50
Total 2100 Support Services – Students	\$1,140,489.40	\$1,328,507.43		\$2,560,398.92

LEA : 101631703 Canon-McMillan SD

Printed 10/30/2018 10:38:31 AM

General Fund (10)

2110 Supervision of Student Services	Elementary	Secondary	Federal	Total
100 <u>Personnel Services – Salaries</u>				
100 Personnel Services – Salaries	70,691.61	70,691.43		141,383.04
Total Personnel Services – Salaries	\$70,691.61	\$70,691.43		\$141,383.04
200 <u>Personnel Services – Employee Benefits</u>				
210 Group Insurance – Contracted Provider	19,085.82	19,085.47		38,171.29
220 Social Security Contributions	5,296.54	5,296.10		10,592.64
230 PSERS Retirement Contributions	22,749.23	22,748.92		45,498.15
260 Workers' Compensation	627.79	627.56		1,255.35
Total Personnel Services – Employee Benefits	\$47,759.38	\$47,758.05		\$95,517.43
300 <u>Purchased Professional and Technical Services</u>				
324 Professional Educational Services – Employee Training and Development Services	346.59	346.58		693.17
Total Purchased Professional and Technical Services	\$346.59	\$346.58		\$693.17
500 <u>Other Purchased Services</u>				
530 Communications	1,139.65	993.40		2,133.05
550 Printing and Binding	148.25	148.25		296.50
580 Travel	1,424.46	1,424.44		2,848.90
Total Other Purchased Services	\$2,712.36	\$2,566.09		\$5,278.45
600 <u>Supplies</u>				
610 General Supplies	786.30	415.02		1,201.32
Total Supplies	\$786.30	\$415.02		\$1,201.32
700 <u>Property</u>				
752 Capital Equipment – Original and Additional	256.24			256.24
Total Property	\$256.24			\$256.24
800 <u>Other Objects</u>				
810 Dues and Fees	458.25	394.25		852.50
Total Other Objects	\$458.25	\$394.25		\$852.50
Total 2110 Supervision of Student Services	\$123,010.73	\$122,171.42		\$245,182.15

LEA : 101631703 Canon-McMillan SD

Printed 10/30/2018 10:38:31 AM

General Fund (10)

2111 Supervision of Student Services – Head of Component	Elementary	Secondary	Federal	Total
100 Personnel Services – Salaries				
100 Personnel Services – Salaries	70,691.61	70,691.43		141,383.04
Total Personnel Services – Salaries	\$70,691.61	\$70,691.43		\$141,383.04
200 Personnel Services – Employee Benefits				
210 Group Insurance – Contracted Provider	19,085.82	19,085.47		38,171.29
220 Social Security Contributions	5,296.54	5,296.10		10,592.64
230 PSERS Retirement Contributions	22,749.23	22,748.92		45,498.15
260 Workers' Compensation	627.79	627.56		1,255.35
Total Personnel Services – Employee Benefits	\$47,759.38	\$47,758.05		\$95,517.43
300 Purchased Professional and Technical Services				
324 Professional Educational Services – Employee Training and Development Services	346.59	346.58		693.17
Total Purchased Professional and Technical Services	\$346.59	\$346.58		\$693.17
500 Other Purchased Services				
530 Communications	1,139.65	993.40		2,133.05
550 Printing and Binding	148.25	148.25		296.50
580 Travel	1,424.46	1,424.44		2,848.90
Total Other Purchased Services	\$2,712.36	\$2,566.09		\$5,278.45
600 Supplies				
610 General Supplies	786.30	415.02		1,201.32
Total Supplies	\$786.30	\$415.02		\$1,201.32
700 Property				
752 Capital Equipment – Original and Additional	256.24			256.24
Total Property	\$256.24			\$256.24
800 Other Objects				
810 Dues and Fees	458.25	394.25		852.50
Total Other Objects	\$458.25	\$394.25		\$852.50
Total 2111 Supervision of Student Services – Head of Component	\$123,010.73	\$122,171.42		\$245,182.15

LEA : 101631703 Canon-McMillan SD

Printed 10/30/2018 10:38:31 AM

General Fund (10)				
2120 Guidance Services	<u>Elementary</u>	<u>Secondary</u>	<u>Federal</u>	<u>Total</u>
100 <u>Personnel Services – Salaries</u>				
100 Personnel Services – Salaries	434,060.00	536,362.76		970,422.76
Total Personnel Services – Salaries	\$434,060.00	\$536,362.76		\$970,422.76
200 <u>Personnel Services – Employee Benefits</u>				
210 Group Insurance – Contracted Provider	87,687.30	119,635.27		207,322.57
220 Social Security Contributions	32,772.80	40,491.35		73,264.15
230 PSERS Retirement Contributions	141,015.28	174,384.02		315,399.30
260 Workers' Compensation	3,875.15	4,755.27		8,630.42
Total Personnel Services – Employee Benefits	\$265,350.53	\$339,265.91		\$604,616.44
300 <u>Purchased Professional and Technical Services</u>				
330 Other Professional Services		2,271.65		2,271.65
Total Purchased Professional and Technical Services		\$2,271.65		\$2,271.65
500 <u>Other Purchased Services</u>				
530 Communications	4,895.46	3,223.11		8,118.57
550 Printing and Binding	944.52	123.49		1,068.01
580 Travel	20.93			20.93
Total Other Purchased Services	\$5,860.91	\$3,346.60		\$9,207.51
600 <u>Supplies</u>				
610 General Supplies	4,797.04	2,590.15		7,387.19
Total Supplies	\$4,797.04	\$2,590.15		\$7,387.19
Total 2120 Guidance Services	\$710,068.48	\$883,837.07		\$1,593,905.55

LEA : 101631703 Canon-McMillan SD

Printed 10/30/2018 10:38:31 AM

General Fund (10)

2140 Psychological Services	<u>Elementary</u>	<u>Secondary</u>	<u>Federal</u>	<u>Total</u>
300 <u>Purchased Professional and Technical Services</u>				
330 Other Professional Services	178,829.44	183,759.51		362,588.95
Total Purchased Professional and Technical Services	\$178,829.44	\$183,759.51		\$362,588.95
500 <u>Other Purchased Services</u>				
580 Travel	334.31	216.88		551.19
Total Other Purchased Services	\$334.31	\$216.88		\$551.19
600 <u>Supplies</u>				
610 General Supplies	379.47			379.47
Total Supplies	\$379.47			\$379.47
Total 2140 Psychological Services	\$179,543.22	\$183,976.39		\$363,519.61

LEA : 101631703 Canon-McMillan SD

Printed 10/30/2018 10:38:31 AM

General Fund (10)				
2170 Student Accounting Services	<u>Elementary</u>	<u>Secondary</u>	<u>Federal</u>	<u>Total</u>
100 <u>Personnel Services – Salaries</u>				
100 Personnel Services – Salaries				51,558.71
Total Personnel Services – Salaries				\$51,558.71
200 <u>Personnel Services – Employee Benefits</u>				
210 Group Insurance – Contracted Provider				18,729.35
220 Social Security Contributions				3,864.00
230 PSERS Retirement Contributions				16,792.56
260 Workers' Compensation				457.47
Total Personnel Services – Employee Benefits				\$39,843.38
Total 2170 Student Accounting Services				\$91,402.09

LEA : 101631703 Canon-McMillan SD

Printed 10/30/2018 10:38:31 AM

General Fund (10)

2190 Other Student Services	<u>Elementary</u>	<u>Secondary</u>	<u>Federal</u>	<u>Total</u>
300 <u>Purchased Professional and Technical Services</u>				
329 Professional Educational Services – Other	127,866.97	138,522.55		266,389.52
Total Purchased Professional and Technical Services	\$127,866.97	\$138,522.55		\$266,389.52
Total 2190 Other Student Services	\$127,866.97	\$138,522.55		\$266,389.52

LEA : 101631703 Canon-McMillan SD

Printed 10/30/2018 10:38:31 AM

General Fund (10)				
2200 Support Services – Instructional Staff	<u>Elementary</u>	<u>Secondary</u>	<u>Federal</u>	<u>Total</u>
100 <u>Personnel Services – Salaries</u>				
100 Personnel Services – Salaries	411,700.71	254,710.73		666,411.44
Total Personnel Services – Salaries	\$411,700.71	\$254,710.73		\$666,411.44
200 <u>Personnel Services – Employee Benefits</u>				
210 Group Insurance – Contracted Provider	102,135.74	56,819.20		158,954.94
220 Social Security Contributions	30,949.84	19,244.09		50,193.93
230 PSERS Retirement Contributions	133,981.47	82,692.58		216,674.05
240 Tuition Reimbursement	87,138.00	49,144.05		136,282.05
260 Workers' Compensation	3,656.17	2,268.51		5,924.68
Total Personnel Services – Employee Benefits	\$357,861.22	\$210,168.43		\$568,029.65
300 <u>Purchased Professional and Technical Services</u>				
324 Professional Educational Services – Employee Training and Development Services	4,387.83	4,753.49	2,687.65	11,828.97
329 Professional Educational Services – Other	21,994.04			21,994.04
330 Other Professional Services	576.00	624.00	5,771.90	6,971.90
Total Purchased Professional and Technical Services	\$26,957.87	\$5,377.49	\$8,459.55	\$40,794.91
500 <u>Other Purchased Services</u>				
530 Communications	6.52	7.07		13.59
580 Travel	7,066.98	7,655.88	3,058.16	17,781.02
Total Other Purchased Services	\$7,073.50	\$7,662.95	\$3,058.16	\$17,794.61
600 <u>Supplies</u>				
610 General Supplies	37,394.92	33,633.25		71,028.17
640 Books and Periodicals	18,144.74	19,667.23		37,811.97
650 Supplies & Fees – Technology Related	18,215.17	17,542.78		35,757.95
Total Supplies	\$73,754.83	\$70,843.26		\$144,598.09
700 <u>Property</u>				
756 Capitalized Technology Hardware and Equipment– Original	7,480.00			7,480.00
Total Property	\$7,480.00			\$7,480.00
800 <u>Other Objects</u>				
810 Dues and Fees	492.00	533.00		1,025.00
Total Other Objects	\$492.00	\$533.00		\$1,025.00
Total 2200 Support Services – Instructional Staff	\$885,320.13	\$549,295.86	\$11,517.71	\$1,446,133.70

LEA : 101631703 Canon-McMillan SD

Printed 10/30/2018 10:38:31 AM

General Fund (10)				
2240 Computer-Assisted Instruction Support Services	<u>Elementary</u>	<u>Secondary</u>	<u>Federal</u>	<u>Total</u>
100 <u>Personnel Services – Salaries</u>				
100 Personnel Services – Salaries	58,950.00			58,950.00
Total Personnel Services – Salaries	\$58,950.00			\$58,950.00
200 <u>Personnel Services – Employee Benefits</u>				
210 Group Insurance – Contracted Provider	6,457.56			6,457.56
220 Social Security Contributions	4,451.72			4,451.72
230 PSERS Retirement Contributions	19,200.00			19,200.00
260 Workers' Compensation	525.32			525.32
Total Personnel Services – Employee Benefits	\$30,634.60			\$30,634.60
600 <u>Supplies</u>				
610 General Supplies	7,268.58			7,268.58
Total Supplies	\$7,268.58			\$7,268.58
Total 2240 Computer-Assisted Instruction Support Services	\$96,853.18			\$96,853.18

LEA : 101631703 Canon-McMillan SD

Printed 10/30/2018 10:38:31 AM

General Fund (10)				
2250 School Library Services	<u>Elementary</u>	<u>Secondary</u>	<u>Federal</u>	<u>Total</u>
100 <u>Personnel Services – Salaries</u>				
100 Personnel Services – Salaries	230,400.00	138,500.00		368,900.00
Total Personnel Services – Salaries	\$230,400.00	\$138,500.00		\$368,900.00
200 <u>Personnel Services – Employee Benefits</u>				
210 Group Insurance – Contracted Provider	76,942.74	37,813.68		114,756.42
220 Social Security Contributions	17,237.38	10,446.67		27,684.05
230 PSERS Retirement Contributions	75,041.42	45,109.62		120,151.04
260 Workers' Compensation	2,053.29	1,234.42		3,287.71
Total Personnel Services – Employee Benefits	\$171,274.83	\$94,604.39		\$265,879.22
600 <u>Supplies</u>				
610 General Supplies	3,396.62	7,499.17		10,895.79
640 Books and Periodicals	18,144.74	19,667.23		37,811.97
650 Supplies & Fees – Technology Related	18,215.17	17,542.78		35,757.95
Total Supplies	\$39,756.53	\$44,709.18		\$84,465.71
Total 2250 School Library Services	\$441,431.36	\$277,813.57		\$719,244.93

LEA : 101631703 Canon-McMillan SD

Printed 10/30/2018 10:38:31 AM

General Fund (10)				
2260 Instruction and Curriculum Development Services	<u>Elementary</u>	<u>Secondary</u>	<u>Federal</u>	<u>Total</u>
100 <u>Personnel Services – Salaries</u>				
100 Personnel Services – Salaries	118,420.71	113,590.73		232,011.44
Total Personnel Services – Salaries	\$118,420.71	\$113,590.73		\$232,011.44
200 <u>Personnel Services – Employee Benefits</u>				
210 Group Insurance – Contracted Provider	18,735.44	19,005.52		37,740.96
220 Social Security Contributions	8,963.93	8,599.26		17,563.19
230 PSERS Retirement Contributions	38,460.06	36,729.64		75,189.70
260 Workers' Compensation	1,040.69	1,009.51		2,050.20
Total Personnel Services – Employee Benefits	\$67,200.12	\$65,343.93		\$132,544.05
300 <u>Purchased Professional and Technical Services</u>				
324 Professional Educational Services – Employee Training and Development Services	3,346.71	3,625.61		6,972.32
330 Other Professional Services	576.00	624.00		1,200.00
Total Purchased Professional and Technical Services	\$3,922.71	\$4,249.61		\$8,172.32
500 <u>Other Purchased Services</u>				
530 Communications	6.52	7.07		13.59
580 Travel	1,780.68	1,929.06		3,709.74
Total Other Purchased Services	\$1,787.20	\$1,936.13		\$3,723.33
600 <u>Supplies</u>				
610 General Supplies	23,386.95	25,335.87		48,722.82
Total Supplies	\$23,386.95	\$25,335.87		\$48,722.82
800 <u>Other Objects</u>				
810 Dues and Fees	492.00	533.00		1,025.00
Total Other Objects	\$492.00	\$533.00		\$1,025.00
Total 2260 Instruction and Curriculum Development Services	\$215,209.69	\$210,989.27		\$426,198.96

LEA : 101631703 Canon-McMillan SD

Printed 10/30/2018 10:38:31 AM

General Fund (10)				
2270 Instructional Staff Professional Development Services	<u>Elementary</u>	<u>Secondary</u>	<u>Federal</u>	<u>Total</u>
100 <u>Personnel Services – Salaries</u>				
100 Personnel Services – Salaries	3,930.00	2,620.00		6,550.00
Total Personnel Services – Salaries	\$3,930.00	\$2,620.00		\$6,550.00
200 <u>Personnel Services – Employee Benefits</u>				
220 Social Security Contributions	296.81	198.16		494.97
230 PSERS Retirement Contributions	1,279.99	853.32		2,133.31
240 Tuition Reimbursement	87,138.00	49,144.05		136,282.05
260 Workers' Compensation	36.87	24.58		61.45
Total Personnel Services – Employee Benefits	\$88,751.67	\$50,220.11		\$138,971.78
300 <u>Purchased Professional and Technical Services</u>				
324 Professional Educational Services – Employee Training and Development Services	1,041.12	1,127.88	2,687.65	4,856.65
329 Professional Educational Services – Other	21,994.04			21,994.04
Total Purchased Professional and Technical Services	\$23,035.16	\$1,127.88	\$2,687.65	\$26,850.69
500 <u>Other Purchased Services</u>				
580 Travel	5,286.30	5,726.82	3,058.16	14,071.28
Total Other Purchased Services	\$5,286.30	\$5,726.82	\$3,058.16	\$14,071.28
600 <u>Supplies</u>				
610 General Supplies	3,342.77	798.21		4,140.98
Total Supplies	\$3,342.77	\$798.21		\$4,140.98
700 <u>Property</u>				
756 Capitalized Technology Hardware and Equipment– Original	7,480.00			7,480.00
Total Property	\$7,480.00			\$7,480.00
Total 2270 Instructional Staff Professional Development Services	\$131,825.90	\$60,493.02	\$5,745.81	\$198,064.73

LEA : 101631703 Canon-McMillan SD

Printed 10/30/2018 10:38:31 AM

General Fund (10)

2280 Nonpublic Support Services

300 Purchased Professional and Technical Services

	<u>Elementary</u>	<u>Secondary</u>	<u>Federal</u>	<u>Total</u>
330 Other Professional Services			5,771.90	5,771.90
Total Purchased Professional and Technical Services			\$5,771.90	\$5,771.90
Total 2280 Nonpublic Support Services			\$5,771.90	\$5,771.90

LEA : 101631703 Canon-McMillan SD

Printed 10/30/2018 10:38:31 AM

General Fund (10)				
2300 Support Services – Administration	<u>Elementary</u>	<u>Secondary</u>	<u>Federal</u>	<u>Total</u>
100 <u>Personnel Services – Salaries</u>				
100 Personnel Services – Salaries	1,128,590.68	718,256.96		2,351,536.42
Total Personnel Services – Salaries	\$1,128,590.68	\$718,256.96		\$2,351,536.42
200 <u>Personnel Services – Employee Benefits</u>				
210 Group Insurance – Contracted Provider	292,507.22	166,376.14		551,700.57
220 Social Security Contributions	85,006.88	54,205.14		174,418.35
230 PSERS Retirement Contributions	363,612.19	231,238.50		738,095.62
260 Workers' Compensation	10,009.93	6,358.99		20,222.74
280 Other Post-Employment Benefits (OPEB)				6,375.64
291 Other Retirement Plans				1,203.21
Total Personnel Services – Employee Benefits	\$751,136.22	\$458,178.77		\$1,492,016.13
300 <u>Purchased Professional and Technical Services</u>				
310 Official / Administrative Services				41,435.00
324 Professional Educational Services – Employee Training and Development Services	1,438.34	1,320.00		8,448.34
330 Other Professional Services				264,199.40
Total Purchased Professional and Technical Services	\$1,438.34	\$1,320.00		\$314,082.74
400 <u>Purchased Property Services</u>				
430 Repairs and Maintenance Services	189.99	1,017.91		1,207.90
Total Purchased Property Services	\$189.99	\$1,017.91		\$1,207.90
500 <u>Other Purchased Services</u>				
520 Insurance – General				47,194.50
530 Communications	1,069.93	7,840.05		27,445.45
549 Other Advertising/Public Relations				2,292.33
550 Printing and Binding		1,461.00		1,711.00
580 Travel	3,156.32	5,392.84		22,446.55
Total Other Purchased Services	\$4,226.25	\$14,693.89		\$101,089.83
600 <u>Supplies</u>				
610 General Supplies	18,701.28	5,978.67		33,275.65
630 Food				3,515.70
640 Books and Periodicals				1,513.80
Total Supplies	\$18,701.28	\$5,978.67		\$38,305.15
700 <u>Property</u>				
752 Capital Equipment – Original and Additional				7,015.11
Total Property				\$7,015.11
800 <u>Other Objects</u>				
810 Dues and Fees	4,985.50	11,481.00		55,692.73
890 Miscellaneous Expenditures		19,399.02		21,360.02
Total Other Objects	\$4,985.50	\$30,880.02		\$77,052.75
Total 2300 Support Services – Administration	\$1,909,268.26	\$1,230,326.22		\$4,382,306.03

LEA : 101631703 Canon-McMillan SD

Printed 10/30/2018 10:38:31 AM

General Fund (10)				
2310 Board Services	<u>Elementary</u>	<u>Secondary</u>	<u>Federal</u>	<u>Total</u>
100 <u>Personnel Services – Salaries</u>				
100 Personnel Services – Salaries				7,300.00
Total Personnel Services – Salaries				\$7,300.00
200 <u>Personnel Services – Employee Benefits</u>				
220 Social Security Contributions				549.12
230 PSERS Retirement Contributions				2,377.65
260 Workers’ Compensation				64.70
291 Other Retirement Plans				3.21
Total Personnel Services – Employee Benefits				\$2,994.68
300 <u>Purchased Professional and Technical Services</u>				
310 Official / Administrative Services				41,435.00
Total Purchased Professional and Technical Services				\$41,435.00
500 <u>Other Purchased Services</u>				
520 Insurance – General				47,194.50
549 Other Advertising/Public Relations				2,292.33
580 Travel				5,560.36
Total Other Purchased Services				\$55,047.19
600 <u>Supplies</u>				
610 General Supplies				906.68
630 Food				152.18
Total Supplies				\$1,058.86
800 <u>Other Objects</u>				
810 Dues and Fees				24,260.88
890 Miscellaneous Expenditures				818.04
Total Other Objects				\$25,078.92
Total 2310 Board Services				\$132,914.65

LEA : 101631703 Canon-McMillan SD

Printed 10/30/2018 10:38:31 AM

General Fund (10)				
2330 Tax Assessment and Collection Services	<u>Elementary</u>	<u>Secondary</u>	<u>Federal</u>	<u>Total</u>
100 <u>Personnel Services – Salaries</u>				
100 Personnel Services – Salaries				62,166.49
Total Personnel Services – Salaries				\$62,166.49
200 <u>Personnel Services – Employee Benefits</u>				
220 Social Security Contributions				4,755.80
260 Workers’ Compensation				(79.27)
Total Personnel Services – Employee Benefits				\$4,676.53
300 <u>Purchased Professional and Technical Services</u>				
330 Other Professional Services				107,933.37
Total Purchased Professional and Technical Services				\$107,933.37
500 <u>Other Purchased Services</u>				
530 Communications				18,535.47
550 Printing and Binding				250.00
Total Other Purchased Services				\$18,785.47
600 <u>Supplies</u>				
610 General Supplies				3,514.19
Total Supplies				\$3,514.19
Total 2330 Tax Assessment and Collection Services				\$197,076.05

LEA : 101631703 Canon-McMillan SD

Printed 10/30/2018 10:38:31 AM

General Fund (10)

2350 Legal and Accounting Services	<u>Elementary</u>	<u>Secondary</u>	<u>Federal</u>	<u>Total</u>
300 <u>Purchased Professional and Technical Services</u>				
330 Other Professional Services				147,575.99
Total Purchased Professional and Technical Services				\$147,575.99
Total 2350 Legal and Accounting Services				\$147,575.99

LEA : 101631703 Canon-McMillan SD

Printed 10/30/2018 10:38:31 AM

General Fund (10)				
2360 Office of the Superintendent / Executive Director Services	<u>Elementary</u>	<u>Secondary</u>	<u>Federal</u>	<u>Total</u>
100 <u>Personnel Services – Salaries</u>				
100 Personnel Services – Salaries				435,222.29
Total Personnel Services – Salaries				\$435,222.29
200 <u>Personnel Services – Employee Benefits</u>				
210 Group Insurance – Contracted Provider				92,817.21
220 Social Security Contributions				29,901.41
230 PSERS Retirement Contributions				140,867.28
260 Workers' Compensation				3,868.39
280 Other Post-Employment Benefits (OPEB)				6,375.64
291 Other Retirement Plans				1,200.00
Total Personnel Services – Employee Benefits				\$275,029.93
300 <u>Purchased Professional and Technical Services</u>				
324 Professional Educational Services – Employee Training and Development Services				5,690.00
330 Other Professional Services				8,690.04
Total Purchased Professional and Technical Services				\$14,380.04
500 <u>Other Purchased Services</u>				
530 Communications	1,069.93	1,159.09		2,229.02
580 Travel				8,337.03
Total Other Purchased Services	\$1,069.93	\$1,159.09		\$10,566.05
600 <u>Supplies</u>				
610 General Supplies				4,174.83
630 Food				3,363.52
640 Books and Periodicals				1,513.80
Total Supplies				\$9,052.15
700 <u>Property</u>				
752 Capital Equipment – Original and Additional				7,015.11
Total Property				\$7,015.11
800 <u>Other Objects</u>				
810 Dues and Fees				6,225.85
890 Miscellaneous Expenditures				1,142.96
Total Other Objects				\$7,368.81
Total 2360 Office of the Superintendent / Executive Director Services	\$1,069.93	\$1,159.09		\$758,634.38

LEA : 101631703 Canon-McMillan SD

Printed 10/30/2018 10:38:31 AM

General Fund (10)				
2380 Office of the Principal Services	<u>Elementary</u>	<u>Secondary</u>	<u>Federal</u>	<u>Total</u>
100 <u>Personnel Services – Salaries</u>				
100 Personnel Services – Salaries	1,128,590.68	718,256.96		1,846,847.64
Total Personnel Services – Salaries	\$1,128,590.68	\$718,256.96		\$1,846,847.64
200 <u>Personnel Services – Employee Benefits</u>				
210 Group Insurance – Contracted Provider	292,507.22	166,376.14		458,883.36
220 Social Security Contributions	85,006.88	54,205.14		139,212.02
230 PSERS Retirement Contributions	363,612.19	231,238.50		594,850.69
260 Workers' Compensation	10,009.93	6,358.99		16,368.92
Total Personnel Services – Employee Benefits	\$751,136.22	\$458,178.77		\$1,209,314.99
300 <u>Purchased Professional and Technical Services</u>				
324 Professional Educational Services – Employee Training and Development Services	1,438.34	1,320.00		2,758.34
Total Purchased Professional and Technical Services	\$1,438.34	\$1,320.00		\$2,758.34
400 <u>Purchased Property Services</u>				
430 Repairs and Maintenance Services	189.99	1,017.91		1,207.90
Total Purchased Property Services	\$189.99	\$1,017.91		\$1,207.90
500 <u>Other Purchased Services</u>				
530 Communications		6,680.96		6,680.96
550 Printing and Binding		1,461.00		1,461.00
580 Travel	3,156.32	5,392.84		8,549.16
Total Other Purchased Services	\$3,156.32	\$13,534.80		\$16,691.12
600 <u>Supplies</u>				
610 General Supplies	18,701.28	5,978.67		24,679.95
Total Supplies	\$18,701.28	\$5,978.67		\$24,679.95
800 <u>Other Objects</u>				
810 Dues and Fees	4,985.50	11,481.00		16,466.50
890 Miscellaneous Expenditures		19,399.02		19,399.02
Total Other Objects	\$4,985.50	\$30,880.02		\$35,865.52
Total 2380 Office of the Principal Services	\$1,908,198.33	\$1,229,167.13		\$3,137,365.46

LEA : 101631703 Canon-McMillan SD

Printed 10/30/2018 10:38:31 AM

General Fund (10)				
2390 Other Administration Services	<u>Elementary</u>	<u>Secondary</u>	<u>Federal</u>	<u>Total</u>
800 <u>Other Objects</u>				
810 Dues and Fees				8,739.50
Total Other Objects				\$8,739.50
Total 2390 Other Administration Services				\$8,739.50

LEA : 101631703 Canon-McMillan SD

Printed 10/30/2018 10:38:31 AM

General Fund (10)				
2400 Support Services – Pupil Health	<u>Elementary</u>	<u>Secondary</u>	<u>Federal</u>	<u>Total</u>
100 <u>Personnel Services – Salaries</u>				
100 Personnel Services – Salaries				274,100.00
Total Personnel Services – Salaries				\$274,100.00
200 <u>Personnel Services – Employee Benefits</u>				
210 Group Insurance – Contracted Provider				76,420.92
220 Social Security Contributions				20,620.30
230 PSERS Retirement Contributions				89,543.44
260 Workers' Compensation				2,442.77
Total Personnel Services – Employee Benefits				\$189,027.43
300 <u>Purchased Professional and Technical Services</u>				
322 Professional Educational Services – Ius			54,281.55	575,274.15
330 Other Professional Services				615,081.12
Total Purchased Professional and Technical Services			\$54,281.55	\$1,190,355.27
500 <u>Other Purchased Services</u>				
530 Communications				190.08
580 Travel				69.36
Total Other Purchased Services				\$259.44
600 <u>Supplies</u>				
610 General Supplies				7,452.12
Total Supplies				\$7,452.12
Total 2400 Support Services – Pupil Health			\$54,281.55	\$1,661,194.26

Page 76

LEA : 101631703 Canon-McMillan SD

Printed 10/30/2018 10:38:31 AM

General Fund (10)

2430 Dental Services

<u>Elementary</u>	<u>Secondary</u>	<u>Federal</u>	<u>Total</u>
-------------------	------------------	----------------	--------------

300 Purchased Professional and Technical Services

330 Other Professional Services			835.50
---------------------------------	--	--	--------

Total Purchased Professional and Technical Services			\$835.50
--	--	--	-----------------

Total 2430 Dental Services			\$835.50
-----------------------------------	--	--	-----------------

LEA : 101631703 Canon-McMillan SD

Printed 10/30/2018 10:38:31 AM

General Fund (10)				
2440 Nursing Services	<u>Elementary</u>	<u>Secondary</u>	<u>Federal</u>	<u>Total</u>
100 <u>Personnel Services – Salaries</u>				
100 Personnel Services – Salaries				274,100.00
Total Personnel Services – Salaries				\$274,100.00
200 <u>Personnel Services – Employee Benefits</u>				
210 Group Insurance – Contracted Provider				76,420.92
220 Social Security Contributions				20,620.30
230 PSERS Retirement Contributions				89,543.44
260 Workers' Compensation				2,442.77
Total Personnel Services – Employee Benefits				\$189,027.43
300 <u>Purchased Professional and Technical Services</u>				
330 Other Professional Services				261,017.71
Total Purchased Professional and Technical Services				\$261,017.71
500 <u>Other Purchased Services</u>				
530 Communications				190.08
580 Travel				69.36
Total Other Purchased Services				\$259.44
600 <u>Supplies</u>				
610 General Supplies				7,452.12
Total Supplies				\$7,452.12
Total 2440 Nursing Services				\$731,856.70

LEA : 101631703 Canon-McMillan SD

Printed 10/30/2018 10:38:31 AM

General Fund (10)				
2500 Support Services – Business	<u>Elementary</u>	<u>Secondary</u>	<u>Federal</u>	<u>Total</u>
100 <u>Personnel Services – Salaries</u>				
100 Personnel Services – Salaries				389,110.26
Total Personnel Services – Salaries				\$389,110.26
200 <u>Personnel Services – Employee Benefits</u>				
210 Group Insurance – Contracted Provider				96,557.07
220 Social Security Contributions				29,283.05
230 PSERS Retirement Contributions				125,436.96
250 Unemployment Compensation				2,462.40
260 Workers' Compensation				3,456.68
291 Other Retirement Plans				546.79
Total Personnel Services – Employee Benefits				\$257,742.95
300 <u>Purchased Professional and Technical Services</u>				
324 Professional Educational Services – Employee Training and Development Services				1,118.10
330 Other Professional Services				38,047.52
340 Technical Services				14,055.21
Total Purchased Professional and Technical Services				\$53,220.83
400 <u>Purchased Property Services</u>				
430 Repairs and Maintenance Services				380.00
440 Rentals				1,889.64
Total Purchased Property Services				\$2,269.64
500 <u>Other Purchased Services</u>				
530 Communications				10,253.77
549 Other Advertising/Public Relations				15,943.43
580 Travel				5,467.71
Total Other Purchased Services				\$31,664.91
600 <u>Supplies</u>				
610 General Supplies				41,266.68
640 Books and Periodicals				81.62
Total Supplies				\$41,348.30
800 <u>Other Objects</u>				
810 Dues and Fees				803.10
Total Other Objects				\$803.10
Total 2500 Support Services – Business				\$776,159.99

LEA : 101631703 Canon-McMillan SD

Printed 10/30/2018 10:38:31 AM

General Fund (10)				
2510 Fiscal Services	<u>Elementary</u>	<u>Secondary</u>	<u>Federal</u>	<u>Total</u>
100 <u>Personnel Services – Salaries</u>				
100 Personnel Services – Salaries				384,946.52
Total Personnel Services – Salaries				\$384,946.52
200 <u>Personnel Services – Employee Benefits</u>				
210 Group Insurance – Contracted Provider				95,963.35
220 Social Security Contributions				28,969.12
230 PSERS Retirement Contributions				124,243.12
260 Workers' Compensation				3,417.61
291 Other Retirement Plans				546.79
Total Personnel Services – Employee Benefits				\$253,139.99
300 <u>Purchased Professional and Technical Services</u>				
324 Professional Educational Services – Employee Training and Development Services				1,118.10
330 Other Professional Services				38,047.52
340 Technical Services				14,055.21
Total Purchased Professional and Technical Services				\$53,220.83
400 <u>Purchased Property Services</u>				
430 Repairs and Maintenance Services				380.00
440 Rentals				1,889.64
Total Purchased Property Services				\$2,269.64
500 <u>Other Purchased Services</u>				
530 Communications				10,253.77
549 Other Advertising/Public Relations				15,943.43
580 Travel				5,467.71
Total Other Purchased Services				\$31,664.91
600 <u>Supplies</u>				
610 General Supplies				6,966.18
640 Books and Periodicals				81.62
Total Supplies				\$7,047.80
800 <u>Other Objects</u>				
810 Dues and Fees				803.10
Total Other Objects				\$803.10
Total 2510 Fiscal Services				\$733,092.79

LEA : 101631703 Canon-McMillan SD

Printed 10/30/2018 10:38:31 AM

General Fund (10)				
2511 Supervision of Fiscal Services - Head of Component	<u>Elementary</u>	<u>Secondary</u>	<u>Federal</u>	<u>Total</u>
100 <u>Personnel Services – Salaries</u>				
100 Personnel Services – Salaries				176,044.18
Total Personnel Services – Salaries				\$176,044.18
200 <u>Personnel Services – Employee Benefits</u>				
210 Group Insurance – Contracted Provider				36,266.03
220 Social Security Contributions				13,267.97
230 PSERS Retirement Contributions				56,624.18
260 Workers' Compensation				1,563.30
291 Other Retirement Plans				546.79
Total Personnel Services – Employee Benefits				\$108,268.27
300 <u>Purchased Professional and Technical Services</u>				
324 Professional Educational Services – Employee Training and Development Services				993.10
330 Other Professional Services				38,047.52
340 Technical Services				14,055.21
Total Purchased Professional and Technical Services				\$53,095.83
400 <u>Purchased Property Services</u>				
430 Repairs and Maintenance Services				380.00
440 Rentals				1,889.64
Total Purchased Property Services				\$2,269.64
500 <u>Other Purchased Services</u>				
530 Communications				10,253.77
549 Other Advertising/Public Relations				15,943.43
580 Travel				5,322.29
Total Other Purchased Services				\$31,519.49
600 <u>Supplies</u>				
610 General Supplies				6,966.18
640 Books and Periodicals				81.62
Total Supplies				\$7,047.80
800 <u>Other Objects</u>				
810 Dues and Fees				803.10
Total Other Objects				\$803.10
Total 2511 Supervision of Fiscal Services - Head of Component				\$379,048.31

LEA : 101631703 Canon-McMillan SD

Printed 10/30/2018 10:38:31 AM

General Fund (10)				
2513 Receiving and Disbursing Funds Services	<u>Elementary</u>	<u>Secondary</u>	<u>Federal</u>	<u>Total</u>
100 <u>Personnel Services – Salaries</u>				
100 Personnel Services – Salaries				41,200.00
Total Personnel Services – Salaries				\$41,200.00
200 <u>Personnel Services – Employee Benefits</u>				
210 Group Insurance – Contracted Provider				15,990.14
220 Social Security Contributions				3,072.96
230 PSERS Retirement Contributions				13,418.85
260 Workers' Compensation				365.57
Total Personnel Services – Employee Benefits				\$32,847.52
Total 2513 Receiving and Disbursing Funds Services				\$74,047.52

LEA : 101631703 Canon-McMillan SD

Printed 10/30/2018 10:38:31 AM

General Fund (10)

2514 Payroll Services

	<u>Elementary</u>	<u>Secondary</u>	<u>Federal</u>	<u>Total</u>
100 <u>Personnel Services – Salaries</u>				
100 Personnel Services – Salaries				52,898.74
Total Personnel Services – Salaries				\$52,898.74
200 <u>Personnel Services – Employee Benefits</u>				
210 Group Insurance – Contracted Provider				17,968.69
220 Social Security Contributions				3,968.15
230 PSERS Retirement Contributions				17,229.08
260 Workers' Compensation				469.40
Total Personnel Services – Employee Benefits				\$39,635.32
Total 2514 Payroll Services				\$92,534.06

LEA : 101631703 Canon-McMillan SD

Printed 10/30/2018 10:38:31 AM

General Fund (10)				
2515 Financial Accounting Services	<u>Elementary</u>	<u>Secondary</u>	<u>Federal</u>	<u>Total</u>
100 <u>Personnel Services – Salaries</u>				
100 Personnel Services – Salaries				114,803.60
Total Personnel Services – Salaries				\$114,803.60
200 <u>Personnel Services – Employee Benefits</u>				
210 Group Insurance – Contracted Provider				25,738.49
220 Social Security Contributions				8,660.04
230 PSERS Retirement Contributions				36,971.01
260 Workers' Compensation				1,019.34
Total Personnel Services – Employee Benefits				\$72,388.88
300 <u>Purchased Professional and Technical Services</u>				
324 Professional Educational Services – Employee Training and Development Services				125.00
Total Purchased Professional and Technical Services				\$125.00
500 <u>Other Purchased Services</u>				
580 Travel				145.42
Total Other Purchased Services				\$145.42
Total 2515 Financial Accounting Services				\$187,462.90

LEA : 101631703 Canon-McMillan SD

Printed 10/30/2018 10:38:31 AM

General Fund (10)

2540 Printing, Publishing and Duplicating Services	<u>Elementary</u>	<u>Secondary</u>	<u>Federal</u>	<u>Total</u>
100 <u>Personnel Services – Salaries</u>				
100 Personnel Services – Salaries				4,163.74
Total Personnel Services – Salaries				\$4,163.74
200 <u>Personnel Services – Employee Benefits</u>				
210 Group Insurance – Contracted Provider				593.72
220 Social Security Contributions				313.93
230 PSERS Retirement Contributions				1,193.84
250 Unemployment Compensation				2,462.40
260 Workers' Compensation				39.07
Total Personnel Services – Employee Benefits				\$4,602.96
600 <u>Supplies</u>				
610 General Supplies				34,300.50
Total Supplies				\$34,300.50
Total 2540 Printing, Publishing and Duplicating Services				\$43,067.20

LEA : 101631703 Canon-McMillan SD

Printed 10/30/2018 10:38:31 AM

General Fund (10)				
2600 Operation and Maintenance of Plant Services	<u>Elementary</u>	<u>Secondary</u>	<u>Federal</u>	<u>Total</u>
100 <u>Personnel Services – Salaries</u>				
100 Personnel Services – Salaries				2,518,506.92
Total Personnel Services – Salaries				\$2,518,506.92
200 <u>Personnel Services – Employee Benefits</u>				
210 Group Insurance – Contracted Provider				537,591.62
220 Social Security Contributions				189,734.37
230 PSERS Retirement Contributions				818,272.59
250 Unemployment Compensation				8,600.99
260 Workers' Compensation				22,334.41
Total Personnel Services – Employee Benefits				\$1,576,533.98
300 <u>Purchased Professional and Technical Services</u>				
330 Other Professional Services				18,689.00
350 Security / Safety Services				224,912.96
Total Purchased Professional and Technical Services				\$243,601.96
400 <u>Purchased Property Services</u>				
410 Cleaning Services				96,154.88
420 Utility Services				214,804.44
430 Repairs and Maintenance Services				211,187.05
440 Rentals				13,468.15
460 Extermination Services				5,728.32
Total Purchased Property Services				\$541,342.84
500 <u>Other Purchased Services</u>				
521 Fire Insurance				75,568.00
523 General Property and Liability Insurance				73,107.00
529 Other Insurance				661.50
530 Communications				44,462.32
580 Travel				1,761.89
Total Other Purchased Services				\$195,560.71
600 <u>Supplies</u>				
610 General Supplies	192,128.56	203,342.34		395,470.90
620 Energy				1,196,877.56
Total Supplies	\$192,128.56	\$203,342.34		\$1,592,348.46
700 <u>Property</u>				
752 Capital Equipment – Original and Additional				76,447.42
762 Capitalized Equipment - Replacement				13,653.00
Total Property				\$90,100.42
800 <u>Other Objects</u>				
810 Dues and Fees				10,710.00
Total Other Objects				\$10,710.00
Total 2600 Operation and Maintenance of Plant Services	\$192,128.56	\$203,342.34		\$6,768,705.29

LEA : 101631703 Canon-McMillan SD

Printed 10/30/2018 10:38:31 AM

General Fund (10)				
2610 Supervision of Operation and Maintenance of Plant Services	<u>Elementary</u>	<u>Secondary</u>	<u>Federal</u>	<u>Total</u>
100 <u>Personnel Services – Salaries</u>				
100 Personnel Services – Salaries				140,849.91
Total Personnel Services – Salaries				\$140,849.91
200 <u>Personnel Services – Employee Benefits</u>				
210 Group Insurance – Contracted Provider				37,549.68
220 Social Security Contributions				10,628.05
230 PSERS Retirement Contributions				45,285.30
260 Workers' Compensation				1,268.18
Total Personnel Services – Employee Benefits				\$94,731.21
500 <u>Other Purchased Services</u>				
580 Travel				324.50
Total Other Purchased Services				\$324.50
600 <u>Supplies</u>				
610 General Supplies	1,786.02	1,934.85		3,720.87
Total Supplies	\$1,786.02	\$1,934.85		\$3,720.87
Total 2610 Supervision of Operation and Maintenance of Plant Services	\$1,786.02	\$1,934.85		\$239,626.49

LEA : 101631703 Canon-McMillan SD

Printed 10/30/2018 10:38:31 AM

General Fund (10)				
2611 Supervision of Operation and Maintenance of Plant Services – Head of Component	<u>Elementary</u>	<u>Secondary</u>	<u>Federal</u>	<u>Total</u>
100 <u>Personnel Services – Salaries</u>				
100 Personnel Services – Salaries				140,849.91
Total Personnel Services – Salaries				\$140,849.91
200 <u>Personnel Services – Employee Benefits</u>				
210 Group Insurance – Contracted Provider				37,549.68
220 Social Security Contributions				10,628.05
230 PSERS Retirement Contributions				45,285.30
260 Workers' Compensation				1,268.18
Total Personnel Services – Employee Benefits				\$94,731.21
500 <u>Other Purchased Services</u>				
580 Travel				324.50
Total Other Purchased Services				\$324.50
600 <u>Supplies</u>				
610 General Supplies	1,786.02	1,934.85		3,720.87
Total Supplies	\$1,786.02	\$1,934.85		\$3,720.87
Total 2611 Supervision of Operation and Maintenance of Plant Services – Head of Component	\$1,786.02	\$1,934.85		\$239,626.49

LEA : 101631703 Canon-McMillan SD

Printed 10/30/2018 10:38:31 AM

General Fund (10)				
2620 Operation of Buildings Services	<u>Elementary</u>	<u>Secondary</u>	<u>Federal</u>	<u>Total</u>
100 <u>Personnel Services – Salaries</u>				
100 Personnel Services – Salaries				2,377,657.01
Total Personnel Services – Salaries				\$2,377,657.01
200 <u>Personnel Services – Employee Benefits</u>				
210 Group Insurance – Contracted Provider				500,041.94
220 Social Security Contributions				179,106.32
230 PSERS Retirement Contributions				772,987.29
250 Unemployment Compensation				8,600.99
260 Workers' Compensation				21,066.23
Total Personnel Services – Employee Benefits				\$1,481,802.77
300 <u>Purchased Professional and Technical Services</u>				
330 Other Professional Services				14,609.00
Total Purchased Professional and Technical Services				\$14,609.00
400 <u>Purchased Property Services</u>				
410 Cleaning Services				41,128.00
420 Utility Services				210,862.52
430 Repairs and Maintenance Services				186,079.84
440 Rentals				13,468.15
460 Extermination Services				5,728.32
Total Purchased Property Services				\$457,266.83
500 <u>Other Purchased Services</u>				
521 Fire Insurance				75,568.00
523 General Property and Liability Insurance				73,107.00
529 Other Insurance				661.50
530 Communications				44,462.32
580 Travel				1,437.39
Total Other Purchased Services				\$195,236.21
600 <u>Supplies</u>				
610 General Supplies	178,952.60	187,890.53		366,843.13
620 Energy				1,142,349.80
Total Supplies	\$178,952.60	\$187,890.53		\$1,509,192.93
700 <u>Property</u>				
752 Capital Equipment – Original and Additional				73,082.42
762 Capitalized Equipment - Replacement				13,653.00
Total Property				\$86,735.42
800 <u>Other Objects</u>				
810 Dues and Fees				10,710.00
Total Other Objects				\$10,710.00
Total 2620 Operation of Buildings Services	\$178,952.60	\$187,890.53		\$6,133,210.17

LEA : 101631703 Canon-McMillan SD

Printed 10/30/2018 10:38:31 AM

General Fund (10)				
2630 Care and Upkeep of Grounds Services	<u>Elementary</u>	<u>Secondary</u>	<u>Federal</u>	<u>Total</u>
300 <u>Purchased Professional and Technical Services</u>				
330 Other Professional Services				4,080.00
Total Purchased Professional and Technical Services				\$4,080.00
400 <u>Purchased Property Services</u>				
410 Cleaning Services				55,026.88
420 Utility Services				3,941.92
430 Repairs and Maintenance Services				3,300.00
Total Purchased Property Services				\$62,268.80
600 <u>Supplies</u>				
610 General Supplies		1,177.86		1,177.86
620 Energy				22,957.79
Total Supplies		\$1,177.86		\$24,135.65
700 <u>Property</u>				
752 Capital Equipment – Original and Additional				3,365.00
Total Property				\$3,365.00
Total 2630 Care and Upkeep of Grounds Services		\$1,177.86		\$93,849.45

LEA : 101631703 Canon-McMillan SD

Printed 10/30/2018 10:38:31 AM

General Fund (10)				
2650 Vehicle Operation and Maintenance Services (Other Than Student Transportation Vehicles)	<u>Elementary</u>	<u>Secondary</u>	<u>Federal</u>	<u>Total</u>
600 <u>Supplies</u>				
620 Energy				31,569.97
Total Supplies				\$31,569.97
Total 2650 Vehicle Operation and Maintenance Services (Other Than Student Transportation Vehicles)				\$31,569.97

LEA : 101631703 Canon-McMillan SD

Printed 10/30/2018 10:38:31 AM

General Fund (10)				
2660 Safety and Security Services	<u>Elementary</u>	<u>Secondary</u>	<u>Federal</u>	<u>Total</u>
300 <u>Purchased Professional and Technical Services</u>				
350 Security / Safety Services				224,912.96
Total Purchased Professional and Technical Services				\$224,912.96
400 <u>Purchased Property Services</u>				
430 Repairs and Maintenance Services				21,807.21
Total Purchased Property Services				\$21,807.21
600 <u>Supplies</u>				
610 General Supplies	11,389.94	12,339.10		23,729.04
Total Supplies	\$11,389.94	\$12,339.10		\$23,729.04
Total 2660 Safety and Security Services	\$11,389.94	\$12,339.10		\$270,449.21

LEA : 101631703 Canon-McMillan SD

Printed 10/30/2018 10:38:31 AM

Page - 41 of 58

General Fund (10)				
2700 Student Transportation Services	<u>Elementary</u>	<u>Secondary</u>	<u>Federal</u>	<u>Total</u>
100 <u>Personnel Services – Salaries</u>				
100 Personnel Services – Salaries				1,671,668.94
Total Personnel Services – Salaries				\$1,671,668.94
200 <u>Personnel Services – Employee Benefits</u>				
210 Group Insurance – Contracted Provider				651,130.42
220 Social Security Contributions				124,511.81
230 PSERS Retirement Contributions				536,388.09
260 Workers' Compensation				14,987.97
Total Personnel Services – Employee Benefits				\$1,327,018.29
300 <u>Purchased Professional and Technical Services</u>				
330 Other Professional Services				8,478.40
Total Purchased Professional and Technical Services				\$8,478.40
400 <u>Purchased Property Services</u>				
410 Cleaning Services				2,251.23
430 Repairs and Maintenance Services				104,766.36
Total Purchased Property Services				\$107,017.59
500 <u>Other Purchased Services</u>				
513 Contracted Carriers				2,116,821.64
516 Student Transportation Services From the IU				66,843.74
522 Automotive Liability Insurance				70,699.00
530 Communications				478.39
580 Travel				1,748.93
Total Other Purchased Services				\$2,256,591.70
600 <u>Supplies</u>				
610 General Supplies				2,041.62
620 Energy				142,921.77
Total Supplies				\$144,963.39
700 <u>Property</u>				
762 Capitalized Equipment - Replacement				366,602.00
Total Property				\$366,602.00
800 <u>Other Objects</u>				
810 Dues and Fees				3,350.00
890 Miscellaneous Expenditures				3,846.12
Total Other Objects				\$7,196.12
Total 2700 Student Transportation Services				\$5,889,536.43

LEA : 101631703 Canon-McMillan SD

Printed 10/30/2018 10:38:31 AM

General Fund (10)				
2710 Supervision of Student Transportation Services	<u>Elementary</u>	<u>Secondary</u>	<u>Federal</u>	<u>Total</u>
100 <u>Personnel Services – Salaries</u>				
100 Personnel Services – Salaries				129,755.86
Total Personnel Services – Salaries				\$129,755.86
200 <u>Personnel Services – Employee Benefits</u>				
210 Group Insurance – Contracted Provider				39,037.60
220 Social Security Contributions				9,750.29
230 PSERS Retirement Contributions				42,183.82
260 Workers' Compensation				1,154.16
Total Personnel Services – Employee Benefits				\$92,125.87
500 <u>Other Purchased Services</u>				
580 Travel				1,748.93
Total Other Purchased Services				\$1,748.93
600 <u>Supplies</u>				
610 General Supplies				260.73
Total Supplies				\$260.73
Total 2710 Supervision of Student Transportation Services				\$223,891.39

LEA : 101631703 Canon-McMillan SD

Printed 10/30/2018 10:38:31 AM

General Fund (10)				
2711 Supervision of Student Transportation Services – Head of Component	<u>Elementary</u>	<u>Secondary</u>	<u>Federal</u>	<u>Total</u>
100 <u>Personnel Services – Salaries</u>				
100 Personnel Services – Salaries				129,755.86
Total Personnel Services – Salaries				\$129,755.86
200 <u>Personnel Services – Employee Benefits</u>				
210 Group Insurance – Contracted Provider				39,037.60
220 Social Security Contributions				9,750.29
230 PSERS Retirement Contributions				42,183.82
260 Workers' Compensation				1,154.16
Total Personnel Services – Employee Benefits				\$92,125.87
500 <u>Other Purchased Services</u>				
580 Travel				1,748.93
Total Other Purchased Services				\$1,748.93
600 <u>Supplies</u>				
610 General Supplies				260.73
Total Supplies				\$260.73
Total 2711 Supervision of Student Transportation Services – Head of Component				\$223,891.39

LEA : 101631703 Canon-McMillan SD

Printed 10/30/2018 10:38:31 AM

General Fund (10)				
2720 Vehicle Operation Services				
	<u>Elementary</u>	<u>Secondary</u>	<u>Federal</u>	<u>Total</u>
100 <u>Personnel Services – Salaries</u>				
100 Personnel Services – Salaries				1,278,602.42
Total Personnel Services – Salaries				\$1,278,602.42
200 <u>Personnel Services – Employee Benefits</u>				
210 Group Insurance – Contracted Provider				567,971.70
220 Social Security Contributions				94,839.60
230 PSERS Retirement Contributions				408,862.08
260 Workers' Compensation				11,511.44
Total Personnel Services – Employee Benefits				\$1,083,184.82
300 <u>Purchased Professional and Technical Services</u>				
330 Other Professional Services				8,478.40
Total Purchased Professional and Technical Services				\$8,478.40
400 <u>Purchased Property Services</u>				
410 Cleaning Services				1,346.66
430 Repairs and Maintenance Services				186.16
Total Purchased Property Services				\$1,532.82
500 <u>Other Purchased Services</u>				
513 Contracted Carriers				643,518.96
516 Student Transportation Services From the IU				66,843.74
522 Automotive Liability Insurance				70,699.00
530 Communications				478.39
Total Other Purchased Services				\$781,540.09
600 <u>Supplies</u>				
610 General Supplies				1,780.89
620 Energy				11,851.51
Total Supplies				\$13,632.40
700 <u>Property</u>				
762 Capitalized Equipment - Replacement				366,602.00
Total Property				\$366,602.00
800 <u>Other Objects</u>				
810 Dues and Fees				3,350.00
890 Miscellaneous Expenditures				3,846.12
Total Other Objects				\$7,196.12
Total 2720 Vehicle Operation Services				\$3,540,769.07

LEA : 101631703 Canon-McMillan SD

Printed 10/30/2018 10:38:31 AM

General Fund (10)				
2740 Vehicle Servicing and Maintenance Services	<u>Elementary</u>	<u>Secondary</u>	<u>Federal</u>	<u>Total</u>
100 <u>Personnel Services – Salaries</u>				
100 Personnel Services – Salaries				263,310.66
Total Personnel Services – Salaries				\$263,310.66
200 <u>Personnel Services – Employee Benefits</u>				
210 Group Insurance – Contracted Provider				44,121.12
220 Social Security Contributions				19,921.92
230 PSERS Retirement Contributions				85,342.19
260 Workers' Compensation				2,322.37
Total Personnel Services – Employee Benefits				\$151,707.60
400 <u>Purchased Property Services</u>				
410 Cleaning Services				904.57
430 Repairs and Maintenance Services				104,580.20
Total Purchased Property Services				\$105,484.77
600 <u>Supplies</u>				
620 Energy				131,070.26
Total Supplies				\$131,070.26
Total 2740 Vehicle Servicing and Maintenance Services				\$651,573.29

LEA : 101631703 Canon-McMillan SD

Printed 10/30/2018 10:38:31 AM

General Fund (10)

2750 Nonpublic Transportation	<u>Elementary</u>	<u>Secondary</u>	<u>Federal</u>	<u>Total</u>
500 <u>Other Purchased Services</u>				
513 Contracted Carriers				1,473,302.68
Total Other Purchased Services				\$1,473,302.68
Total 2750 Nonpublic Transportation				\$1,473,302.68

LEA : 101631703 Canon-McMillan SD

Printed 10/30/2018 10:38:31 AM

General Fund (10)				
2800 Support Services – Central	Elementary	Secondary	Federal	Total
100 Personnel Services – Salaries				
100 Personnel Services – Salaries			5,000.00	450,874.24
Total Personnel Services – Salaries			\$5,000.00	\$450,874.24
200 Personnel Services – Employee Benefits				
210 Group Insurance – Contracted Provider				102,598.33
220 Social Security Contributions			380.39	33,892.25
230 PSERS Retirement Contributions			1,628.50	145,433.80
240 Tuition Reimbursement				6,144.00
250 Unemployment Compensation				1,641.60
260 Workers' Compensation			35.82	4,008.45
Total Personnel Services – Employee Benefits			\$2,044.71	\$293,718.43
300 Purchased Professional and Technical Services				
324 Professional Educational Services – Employee Training and Development Services			1,295.00	3,545.00
330 Other Professional Services				153,936.38
Total Purchased Professional and Technical Services			\$1,295.00	\$157,481.38
400 Purchased Property Services				
440 Rentals				113,291.84
Total Purchased Property Services				\$113,291.84
500 Other Purchased Services				
530 Communications				153,713.67
580 Travel			1,230.10	7,651.46
Total Other Purchased Services			\$1,230.10	\$161,365.13
600 Supplies				
610 General Supplies			590.00	26,157.73
650 Supplies & Fees – Technology Related				100,559.22
Total Supplies			\$590.00	\$126,716.95
700 Property				
752 Capital Equipment – Original and Additional				187,596.49
Total Property				\$187,596.49
800 Other Objects				
810 Dues and Fees				1,388.28
Total Other Objects				\$1,388.28
Total 2800 Support Services – Central			\$10,159.81	\$1,492,432.74

LEA : 101631703 Canon-McMillan SD

Printed 10/30/2018 10:38:31 AM

General Fund (10)				
2810 Planning, Research, Development and Evaluation Services	<u>Elementary</u>	<u>Secondary</u>	<u>Federal</u>	<u>Total</u>
100 <u>Personnel Services – Salaries</u>				
100 Personnel Services – Salaries				254,472.91
Total Personnel Services – Salaries				\$254,472.91
200 <u>Personnel Services – Employee Benefits</u>				
210 Group Insurance – Contracted Provider				48,374.14
220 Social Security Contributions				19,150.13
230 PSERS Retirement Contributions				82,050.27
250 Unemployment Compensation				1,641.60
260 Workers' Compensation				2,273.00
Total Personnel Services – Employee Benefits				\$153,489.14
300 <u>Purchased Professional and Technical Services</u>				
324 Professional Educational Services – Employee Training and Development Services				2,250.00
330 Other Professional Services				50,151.00
Total Purchased Professional and Technical Services				\$52,401.00
400 <u>Purchased Property Services</u>				
440 Rentals				113,291.84
Total Purchased Property Services				\$113,291.84
500 <u>Other Purchased Services</u>				
530 Communications				152,660.70
580 Travel				4,574.55
Total Other Purchased Services				\$157,235.25
600 <u>Supplies</u>				
610 General Supplies				24,484.42
650 Supplies & Fees – Technology Related				100,559.22
Total Supplies				\$125,043.64
700 <u>Property</u>				
752 Capital Equipment – Original and Additional				187,596.49
Total Property				\$187,596.49
800 <u>Other Objects</u>				
810 Dues and Fees				736.08
Total Other Objects				\$736.08
Total 2810 Planning, Research, Development and Evaluation Services				\$1,044,266.35

LEA : 101631703 Canon-McMillan SD

Printed 10/30/2018 10:38:31 AM

General Fund (10)

2820 Information Services

<u>Elementary</u>	<u>Secondary</u>	<u>Federal</u>	<u>Total</u>
-------------------	------------------	----------------	--------------

300 Purchased Professional and Technical Services

330 Other Professional Services			77,800.00
---------------------------------	--	--	-----------

Total Purchased Professional and Technical Services			\$77,800.00
--	--	--	--------------------

Total 2820 Information Services			\$77,800.00
--	--	--	--------------------

LEA : 101631703 Canon-McMillan SD

Printed 10/30/2018 10:38:31 AM

General Fund (10)

2823 Public Information Services

Elementary Secondary Federal Total

300 Purchased Professional and Technical Services

330 Other Professional Services 77,800.00

Total Purchased Professional and Technical Services \$77,800.00

Total 2823 Public Information Services \$77,800.00

LEA : 101631703 Canon-McMillan SD

Printed 10/30/2018 10:38:31 AM

General Fund (10)				
2830 Staff Services				
	<u>Elementary</u>	<u>Secondary</u>	<u>Federal</u>	<u>Total</u>
100 <u>Personnel Services – Salaries</u>				
100 Personnel Services – Salaries				191,401.33
Total Personnel Services – Salaries				\$191,401.33
200 <u>Personnel Services – Employee Benefits</u>				
210 Group Insurance – Contracted Provider				54,224.19
220 Social Security Contributions				14,361.73
230 PSERS Retirement Contributions				61,755.03
240 Tuition Reimbursement				6,144.00
260 Workers' Compensation				1,699.63
Total Personnel Services – Employee Benefits				\$138,184.58
300 <u>Purchased Professional and Technical Services</u>				
330 Other Professional Services				25,985.38
Total Purchased Professional and Technical Services				\$25,985.38
500 <u>Other Purchased Services</u>				
530 Communications				1,052.97
580 Travel				1,846.81
Total Other Purchased Services				\$2,899.78
600 <u>Supplies</u>				
610 General Supplies				1,083.31
Total Supplies				\$1,083.31
800 <u>Other Objects</u>				
810 Dues and Fees				652.20
Total Other Objects				\$652.20
Total 2830 Staff Services				\$360,206.58

LEA : 101631703 Canon-McMillan SD

Printed 10/30/2018 10:38:31 AM

General Fund (10)				
2831 Supervision of Staff Services	<u>Elementary</u>	<u>Secondary</u>	<u>Federal</u>	<u>Total</u>
100 <u>Personnel Services – Salaries</u>				
100 Personnel Services – Salaries				191,401.33
Total Personnel Services – Salaries				\$191,401.33
200 <u>Personnel Services – Employee Benefits</u>				
210 Group Insurance – Contracted Provider				54,224.19
220 Social Security Contributions				14,361.73
230 PSERS Retirement Contributions				61,755.03
260 Workers' Compensation				1,699.63
Total Personnel Services – Employee Benefits				\$132,040.58
500 <u>Other Purchased Services</u>				
530 Communications				1,052.97
580 Travel				1,846.81
Total Other Purchased Services				\$2,899.78
600 <u>Supplies</u>				
610 General Supplies				1,083.31
Total Supplies				\$1,083.31
800 <u>Other Objects</u>				
810 Dues and Fees				652.20
Total Other Objects				\$652.20
Total 2831 Supervision of Staff Services				\$328,077.20

LEA : 101631703 Canon-McMillan SD

Printed 10/30/2018 10:38:31 AM

General Fund (10)				
2832 Recruitment and Placement Services	<u>Elementary</u>	<u>Secondary</u>	<u>Federal</u>	<u>Total</u>
300 <u>Purchased Professional and Technical Services</u>				
330 Other Professional Services				25,985.38
Total Purchased Professional and Technical Services				\$25,985.38
Total 2832 Recruitment and Placement Services				\$25,985.38

LEA : 101631703 Canon-McMillan SD

Printed 10/30/2018 10:38:31 AM

General Fund (10)

2834 Staff Development Services – Non-Instructional, Certified Staff Only	<u>Elementary</u>	<u>Secondary</u>	<u>Federal</u>	<u>Total</u>
200 <u>Personnel Services – Employee Benefits</u>				
240 Tuition Reimbursement				6,144.00
Total Personnel Services – Employee Benefits				\$6,144.00
Total 2834 Staff Development Services – Non-Instructional, Certified Staff Only				\$6,144.00

LEA : 101631703 Canon-McMillan SD

Printed 10/30/2018 10:38:31 AM

General Fund (10)				
2850 State and Federal Agency Liaison Services	<u>Elementary</u>	<u>Secondary</u>	<u>Federal</u>	<u>Total</u>
100 <u>Personnel Services – Salaries</u>				
100 Personnel Services – Salaries			5,000.00	5,000.00
Total Personnel Services – Salaries			\$5,000.00	\$5,000.00
200 <u>Personnel Services – Employee Benefits</u>				
220 Social Security Contributions			380.39	380.39
230 PSERS Retirement Contributions			1,628.50	1,628.50
260 Workers’ Compensation			35.82	35.82
Total Personnel Services – Employee Benefits			\$2,044.71	\$2,044.71
300 <u>Purchased Professional and Technical Services</u>				
324 Professional Educational Services – Employee Training and Development Services			1,295.00	1,295.00
Total Purchased Professional and Technical Services			\$1,295.00	\$1,295.00
500 <u>Other Purchased Services</u>				
580 Travel			1,230.10	1,230.10
Total Other Purchased Services			\$1,230.10	\$1,230.10
600 <u>Supplies</u>				
610 General Supplies			590.00	590.00
Total Supplies			\$590.00	\$590.00
Total 2850 State and Federal Agency Liaison Services			\$10,159.81	\$10,159.81

LEA : 101631703 Canon-McMillan SD

Printed 10/30/2018 10:38:31 AM

General Fund (10)

2900 Other Support Services	<u>Elementary</u>	<u>Secondary</u>	<u>Federal</u>	<u>Total</u>
500 <u>Other Purchased Services</u>				
595 IU Payments By Withholding				80,528.13
Total Other Purchased Services				\$80,528.13
800 <u>Other Objects</u>				
899 Pass-Through Funds				855,705.40
Total Other Objects				\$855,705.40
Total 2900 Other Support Services				\$936,233.53

LEA : 101631703 Canon-McMillan SD

Printed 10/30/2018 10:38:31 AM

General Fund (10)				
2910 Support Services Not Listed Elsewhere In the 2000 Series	<u>Elementary</u>	<u>Secondary</u>	<u>Federal</u>	<u>Total</u>
500 <u>Other Purchased Services</u>				
595 IU Payments By Withholding				80,528.13
Total Other Purchased Services				\$80,528.13
Total 2910 Support Services Not Listed Elsewhere In the 2000 Series				\$80,528.13

LEA : 101631703 Canon-McMillan SD

Printed 10/30/2018 10:38:31 AM

General Fund (10)				
2990 Pass-Through Funds	<u>Elementary</u>	<u>Secondary</u>	<u>Federal</u>	<u>Total</u>
800 <u>Other Objects</u>				
899 Pass-Through Funds				855,705.40
Total Other Objects				\$855,705.40
Total 2990 Pass-Through Funds				\$855,705.40

LEA : 101631703 Canon-McMillan SD

Printed 10/30/2018 10:38:34 AM

General Fund (10)	
3000 Operation of Non-Instructional Services	<u>Total</u>
100 <u>Personnel Services – Salaries</u>	
100 Personnel Services – Salaries	894,499.79
Total Personnel Services – Salaries	\$894,499.79
200 <u>Personnel Services – Employee Benefits</u>	
210 Group Insurance – Contracted Provider	22,201.84
220 Social Security Contributions	67,695.03
230 PSERS Retirement Contributions	267,315.27
250 Unemployment Compensation	2,510.75
260 Workers' Compensation	7,932.61
280 Other Post-Employment Benefits (OPEB)	7,002.36
291 Other Retirement Plans	10,545.03
Total Personnel Services – Employee Benefits	\$385,202.89
300 <u>Purchased Professional and Technical Services</u>	
324 Professional Educational Services – Employee Training and Development Services	1,271.80
330 Other Professional Services	7,104.58
350 Security / Safety Services	13,523.12
390 Other Purchased Professional and Technical Services	46,152.50
Total Purchased Professional and Technical Services	\$68,052.00
400 <u>Purchased Property Services</u>	
410 Cleaning Services	1,114.50
430 Repairs and Maintenance Services	24,506.27
Total Purchased Property Services	\$25,620.77
500 <u>Other Purchased Services</u>	
580 Travel	42,956.52
Total Other Purchased Services	\$42,956.52
600 <u>Supplies</u>	
610 General Supplies	124,072.24
640 Books and Periodicals	215.00
Total Supplies	\$124,287.24
700 <u>Property</u>	
752 Capital Equipment – Original and Additional	38,354.62
762 Capitalized Equipment - Replacement	44,700.49
Total Property	\$83,055.11
800 <u>Other Objects</u>	
810 Dues and Fees	77,626.02
860 Grants To Municipal and Community Service Organizations	153,242.50
890 Miscellaneous Expenditures	12,482.16
Total Other Objects	\$243,350.68
Total 3000 Operation of Non-Instructional Services	\$1,867,025.00

LEA : 101631703 Canon-McMillan SD

Printed 10/30/2018 10:38:34 AM

General Fund (10)				
3200 Student Activities	<u>Elementary</u>	<u>Secondary</u>	<u>Federal</u>	<u>Total</u>
100 <u>Personnel Services – Salaries</u>				
100 Personnel Services – Salaries				887,795.19
Total Personnel Services – Salaries				\$887,795.19
200 <u>Personnel Services – Employee Benefits</u>				
210 Group Insurance – Contracted Provider				22,201.84
220 Social Security Contributions				67,267.83
230 PSERS Retirement Contributions				265,483.20
250 Unemployment Compensation				2,510.75
260 Workers' Compensation				7,889.08
280 Other Post-Employment Benefits (OPEB)				7,002.36
291 Other Retirement Plans				10,545.03
Total Personnel Services – Employee Benefits				\$382,900.09
300 <u>Purchased Professional and Technical Services</u>				
324 Professional Educational Services – Employee Training and Development Services				1,271.80
330 Other Professional Services				50,227.10
350 Security / Safety Services				13,523.12
390 Other Purchased Professional and Technical Services				46,152.50
Total Purchased Professional and Technical Services				\$111,174.52
400 <u>Purchased Property Services</u>				
410 Cleaning Services				1,114.50
430 Repairs and Maintenance Services				24,506.27
Total Purchased Property Services				\$25,620.77
500 <u>Other Purchased Services</u>				
580 Travel				42,956.52
Total Other Purchased Services				\$42,956.52
600 <u>Supplies</u>				
610 General Supplies				108,799.61
640 Books and Periodicals				215.00
Total Supplies				\$109,014.61
700 <u>Property</u>				
752 Capital Equipment – Original and Additional				38,354.62
762 Capitalized Equipment - Replacement				44,700.49
Total Property				\$83,055.11
800 <u>Other Objects</u>				
810 Dues and Fees				57,705.31
890 Miscellaneous Expenditures				12,482.16
Total Other Objects				\$70,187.47
Total 3200 Student Activities				\$1,712,704.28

LEA : 101631703 Canon-McMillan SD

Printed 10/30/2018 10:38:34 AM

General Fund (10)				
3300 Community Services	<u>Elementary</u>	<u>Secondary</u>	<u>Federal</u>	<u>Total</u>
100 <u>Personnel Services – Salaries</u>				
100 Personnel Services – Salaries			1,079.60	6,704.60
Total Personnel Services – Salaries			\$1,079.60	\$6,704.60
200 <u>Personnel Services – Employee Benefits</u>				
220 Social Security Contributions				427.20
230 PSERS Retirement Contributions				1,832.07
260 Workers’ Compensation			(1.38)	43.53
Total Personnel Services – Employee Benefits			(\$1.38)	\$2,302.80
300 <u>Purchased Professional and Technical Services</u>				
330 Other Professional Services				(43,122.52)
Total Purchased Professional and Technical Services				(\$43,122.52)
600 <u>Supplies</u>				
610 General Supplies				15,272.63
Total Supplies				\$15,272.63
800 <u>Other Objects</u>				
810 Dues and Fees				19,920.71
860 Grants To Municipal and Community Service Organizations				153,242.50
Total Other Objects				\$173,163.21
Total 3300 Community Services			\$1,078.22	\$154,320.72

LEA : 101631703 Canon-McMillan SD

Printed 10/30/2018 10:38:37 AM

General Fund (10)

4000 Facilities Acquisition, Construction and Improvement Services		<u>Total</u>
300 <u>Purchased Professional and Technical Services</u>		
330 Other Professional Services	51,748.00	
Total Purchased Professional and Technical Services		\$51,748.00
400 <u>Purchased Property Services</u>		
430 Repairs and Maintenance Services	507,974.00	
Total Purchased Property Services		\$507,974.00
700 <u>Property</u>		
762 Capitalized Equipment - Replacement	4,860.95	
Total Property		\$4,860.95
Total 4000 Facilities Acquisition, Construction and Improvement Services		\$564,582.95

LEA : 101631703 Canon-McMillan SD

Printed 10/30/2018 10:38:37 AM

General Fund (10)

4100 Site Acquisition Services – Original and Additional	<u>Elementary</u>	<u>Secondary</u>	<u>Federal</u>	<u>Total</u>
300 <u>Purchased Professional and Technical Services</u>				
330 Other Professional Services				3,785.00
Total Purchased Professional and Technical Services				\$3,785.00
Total 4100 Site Acquisition Services – Original and Additional				\$3,785.00

LEA : 101631703 Canon-McMillan SD

Printed 10/30/2018 10:38:37 AM

General Fund (10)

4200 Existing Site Improvement Services	<u>Elementary</u>	<u>Secondary</u>	<u>Federal</u>	<u>Total</u>
300 <u>Purchased Professional and Technical Services</u>				
330 Other Professional Services				8,528.00
Total Purchased Professional and Technical Services				\$8,528.00
Total 4200 Existing Site Improvement Services				\$8,528.00

LEA : 101631703 Canon-McMillan SD

Printed 10/30/2018 10:38:37 AM

General Fund (10)

4300 Architecture and Engineering Services / Educational Specifications Development – Original and Additional	<u>Elementary</u>	<u>Secondary</u>	<u>Federal</u>	<u>Total</u>
300 <u>Purchased Professional and Technical Services</u>				
330 Other Professional Services				8,200.00
Total Purchased Professional and Technical Services				\$8,200.00
Total 4300 Architecture and Engineering Services / Educational Specifications Development – Original and Additional				\$8,200.00

LEA : 101631703 Canon-McMillan SD

Printed 10/30/2018 10:38:37 AM

General Fund (10)

4400 Architecture and Engineering Services / Educational Specifications – Improvements	<u>Elementary</u>	<u>Secondary</u>	<u>Federal</u>	<u>Total</u>
300 <u>Purchased Professional and Technical Services</u>				
330 Other Professional Services				23,735.00
Total Purchased Professional and Technical Services				\$23,735.00
Total 4400 Architecture and Engineering Services / Educational Specifications – Improvements				\$23,735.00

LEA : 101631703 Canon-McMillan SD

Printed 10/30/2018 10:38:37 AM

General Fund (10)

4600 Existing Building Improvement Services	<u>Elementary</u>	<u>Secondary</u>	<u>Federal</u>	<u>Total</u>
300 <u>Purchased Professional and Technical Services</u>				
330 Other Professional Services				7,500.00
Total Purchased Professional and Technical Services				\$7,500.00
400 <u>Purchased Property Services</u>				
430 Repairs and Maintenance Services				507,974.00
Total Purchased Property Services				\$507,974.00
700 <u>Property</u>				
762 Capitalized Equipment - Replacement				4,860.95
Total Property				\$4,860.95
Total 4600 Existing Building Improvement Services				\$520,334.95

LEA : 101631703 Canon-McMillan SD

Printed 10/30/2018 10:38:43 AM

General Fund (10)

5000 Other Expenditures and Financing Uses

Total

800	<u>Other Objects</u>	
830	Interest	6,634,789.07
880	Refunds of Prior Years' Receipts	21,381.73
Total Other Objects		\$6,656,170.80
900	<u>Other Uses of Funds</u>	
910	Redemption of Principal	2,850,576.00
939	Other Fund Transfers	8,551,565.00
Total Other Uses of Funds		\$11,402,141.00
Total 5000 Other Expenditures and Financing Uses		\$18,058,311.80

LEA : 101631703 Canon-McMillan SD

Printed 10/30/2018 10:38:43 AM

General Fund (10)

5100 Debt Service / Other Expenditures and Financing Uses

Elementary Secondary Federal Total

800 <u>Other Objects</u>				
830 Interest				6,634,789.07
880 Refunds of Prior Years' Receipts				21,381.73
Total Other Objects				\$6,656,170.80
900 <u>Other Uses of Funds</u>				
910 Redemption of Principal				2,850,576.00
Total Other Uses of Funds				\$2,850,576.00
Total 5100 Debt Service / Other Expenditures and Financing Uses				\$9,506,746.80

LEA : 101631703 Canon-McMillan SD

Printed 10/30/2018 10:38:43 AM

General Fund (10)				
5110 Debt Service	<u>Elementary</u>	<u>Secondary</u>	<u>Federal</u>	<u>Total</u>
800 <u>Other Objects</u>				
830 Interest				6,634,789.07
Total Other Objects				\$6,634,789.07
900 <u>Other Uses of Funds</u>				
910 Redemption of Principal				2,850,576.00
Total Other Uses of Funds				\$2,850,576.00
Total 5110 Debt Service				\$9,485,365.07

LEA : 101631703 Canon-McMillan SD

Printed 10/30/2018 10:38:43 AM

General Fund (10)

5130 Refund of Prior Year Revenues / Receipts	<u>Elementary</u>	<u>Secondary</u>	<u>Federal</u>	<u>Total</u>
800 <u>Other Objects</u>				
880 Refunds of Prior Years' Receipts				21,381.73
Total Other Objects				\$21,381.73
Total 5130 Refund of Prior Year Revenues / Receipts				\$21,381.73

LEA : 101631703 Canon-McMillan SD

Printed 10/30/2018 10:38:43 AM

General Fund (10)

5200 Interfund Transfers – Out	<u>Elementary</u>	<u>Secondary</u>	<u>Federal</u>	<u>Total</u>
900 <u>Other Uses of Funds</u>				
939 Other Fund Transfers				8,551,565.00
Total Other Uses of Funds				\$8,551,565.00
Total 5200 Interfund Transfers – Out				\$8,551,565.00

LEA : 101631703 Canon-McMillan SD

Printed 10/30/2018 10:38:43 AM

General Fund (10)

5230 Capital Projects Fund Transfers	<u>Elementary</u>	<u>Secondary</u>	<u>Federal</u>	<u>Total</u>
900 <u>Other Uses of Funds</u>				
939 Other Fund Transfers				8,551,565.00
Total Other Uses of Funds				\$8,551,565.00
Total 5230 Capital Projects Fund Transfers				\$8,551,565.00

LEA : 101631703 Canon-McMillan SD

Printed 10/30/2018 10:38:35 AM

Athletic / School-Sponsored Extra Curricular Activities Fund (29)

3000 Operation of Non-Instructional Services	<u>Total</u>
100 <u>Personnel Services – Salaries</u>	
100 Personnel Services – Salaries	17,830.35
Total Personnel Services – Salaries	\$17,830.35
200 <u>Personnel Services – Employee Benefits</u>	
220 Social Security Contributions	1,349.07
230 PSERS Retirement Contributions	5,709.66
260 Workers' Compensation	167.17
Total Personnel Services – Employee Benefits	\$7,225.90
300 <u>Purchased Professional and Technical Services</u>	
330 Other Professional Services	16,860.47
350 Security / Safety Services	2,858.75
390 Other Purchased Professional and Technical Services	9,050.00
Total Purchased Professional and Technical Services	\$28,769.22
400 <u>Purchased Property Services</u>	
430 Repairs and Maintenance Services	217.00
Total Purchased Property Services	\$217.00
600 <u>Supplies</u>	
610 General Supplies	43,716.41
Total Supplies	\$43,716.41
700 <u>Property</u>	
752 Capital Equipment – Original and Additional	3,084.00
Total Property	\$3,084.00
800 <u>Other Objects</u>	
810 Dues and Fees	1,124.63
Total Other Objects	\$1,124.63
Total 3000 Operation of Non-Instructional Services	\$101,967.51

LEA : 101631703 Canon-McMillan SD

Printed 10/30/2018 10:38:35 AM

Athletic / School-Sponsored Extra Curricular Activities Fund (29)

3200 Student Activities	Elementary	Secondary	Federal	Total
100 <u>Personnel Services – Salaries</u>				
100 Personnel Services – Salaries				17,830.35
Total Personnel Services – Salaries				\$17,830.35
200 <u>Personnel Services – Employee Benefits</u>				
220 Social Security Contributions				1,349.07
230 PSERS Retirement Contributions				5,709.66
260 Workers’ Compensation				167.17
Total Personnel Services – Employee Benefits				\$7,225.90
300 <u>Purchased Professional and Technical Services</u>				
330 Other Professional Services				16,860.47
350 Security / Safety Services				2,858.75
390 Other Purchased Professional and Technical Services				9,050.00
Total Purchased Professional and Technical Services				\$28,769.22
400 <u>Purchased Property Services</u>				
430 Repairs and Maintenance Services				217.00
Total Purchased Property Services				\$217.00
600 <u>Supplies</u>				
610 General Supplies				43,716.41
Total Supplies				\$43,716.41
700 <u>Property</u>				
752 Capital Equipment – Original and Additional				3,084.00
Total Property				\$3,084.00
800 <u>Other Objects</u>				
810 Dues and Fees				1,124.63
Total Other Objects				\$1,124.63
Total 3200 Student Activities				\$101,967.51

LEA : 101631703 Canon-McMillan SD

Printed 10/30/2018 10:38:40 AM

Capital Reserve Fund - § 1431 (32)	
4000 Facilities Acquisition, Construction and Improvement Services	<u>Total</u>
300 <u>Purchased Professional and Technical Services</u>	
330 Other Professional Services	402,362.05
Total Purchased Professional and Technical Services	\$402,362.05
700 <u>Property</u>	
710 Land and Improvements	208,921.73
Total Property	\$208,921.73
Total 4000 Facilities Acquisition, Construction and Improvement Services	\$611,283.78

LEA : 101631703 Canon-McMillan SD

Printed 10/30/2018 10:38:40 AM

Capital Reserve Fund - § 1431 (32)

4100 Site Acquisition Services – Original and Additional

Elementary

Secondary

Federal

Total

700 Property

710 Land and Improvements

208,921.73

Total Property				\$208,921.73
Total 4100 Site Acquisition Services – Original and Additional				\$208,921.73

LEA : 101631703 Canon-McMillan SD

Printed 10/30/2018 10:38:40 AM

Capital Reserve Fund - § 1431 (32)

4600 Existing Building Improvement Services

<u>Elementary</u>	<u>Secondary</u>	<u>Federal</u>	<u>Total</u>
-------------------	------------------	----------------	--------------

300 Purchased Professional and Technical Services

330 Other Professional Services			402,362.05
---------------------------------	--	--	------------

Total Purchased Professional and Technical Services			\$402,362.05
--	--	--	---------------------

Total 4600 Existing Building Improvement Services			\$402,362.05
--	--	--	---------------------

LEA : 101631703 Canon-McMillan SD

Printed 10/30/2018 10:38:41 AM

Other Capital Projects Fund (39)

4000 Facilities Acquisition, Construction and Improvement Services

Total

300 Purchased Professional and Technical Services

330 Other Professional Services	629,821.01
390 Other Purchased Professional and Technical Services	485,895.04

Total Purchased Professional and Technical Services	\$1,115,716.05
--	-----------------------

400 Purchased Property Services

450 Construction Services	12,404,349.59
---------------------------	---------------

Total Purchased Property Services	\$12,404,349.59
--	------------------------

700 Property

752 Capital Equipment – Original and Additional	330,065.96
756 Capitalized Technology Hardware and Equipment – Original	41,826.54

Total Property	\$371,892.50
-----------------------	---------------------

Total 4000 Facilities Acquisition, Construction and Improvement Services	\$13,891,958.14
---	------------------------

LEA : 101631703 Canon-McMillan SD

Printed 10/30/2018 10:38:41 AM

Other Capital Projects Fund (39)

4100 Site Acquisition Services – Original and Additional

Elementary

Secondary

Federal

Total

300 Purchased Professional and Technical Services

330 Other Professional Services

44,987.08

Total Purchased Professional and Technical Services

\$44,987.08

Total 4100 Site Acquisition Services – Original and Additional

\$44,987.08

LEA : 101631703 Canon-McMillan SD

Printed 10/30/2018 10:38:41 AM

Other Capital Projects Fund (39)

4300 Architecture and Engineering Services / Educational Specifications Development – Original and Additional	<u>Elementary</u>	<u>Secondary</u>	<u>Federal</u>	<u>Total</u>
300 <u>Purchased Professional and Technical Services</u>				
330 Other Professional Services				382,324.00
Total Purchased Professional and Technical Services				\$382,324.00
Total 4300 Architecture and Engineering Services / Educational Specifications Development – Original and Additional				\$382,324.00

LEA : 101631703 Canon-McMillan SD

Printed 10/30/2018 10:38:41 AM

Other Capital Projects Fund (39)

4500 Building Acquisition and Construction Services – Original and Additional	<u>Elementary</u>	<u>Secondary</u>	<u>Federal</u>	<u>Total</u>
300 <u>Purchased Professional and Technical Services</u>				
330 Other Professional Services				202,509.93
390 Other Purchased Professional and Technical Services				485,895.04
Total Purchased Professional and Technical Services				\$688,404.97
400 <u>Purchased Property Services</u>				
450 Construction Services				12,404,349.59
Total Purchased Property Services				\$12,404,349.59
700 <u>Property</u>				
752 Capital Equipment – Original and Additional				330,065.96
756 Capitalized Technology Hardware and Equipment – Original				41,826.54
Total Property				\$371,892.50
Total 4500 Building Acquisition and Construction Services – Original and Additional				\$13,464,647.06

LEA : 101631703 Canon-McMillan SD

Printed 10/30/2018 10:38:49 AM

	<u>General Fund(10)</u>	<u>Public Purpose Trust(27)</u>	<u>Other Compt Approved</u> <u>(28)</u>	<u>Athletic / Activity(29)</u>	<u>Capital Reserve (690.</u> <u>1850)(31)</u>
1000 <u>Instruction</u>					
1100 Regular Programs - Elementary / Secondary	28,415,494.95				
1200 Special Programs - Elementary / Secondary	10,766,740.31				
1300 Vocational Education	2,155,291.41				
1400 Other Instructional Programs - Elementary / Secondary	373,679.00				
1500 Nonpublic School Programs	15,542.38				
Total Instruction	\$41,726,748.05				
2000 <u>Support Services</u>					
2100 Support Services - Students	2,560,398.92				
2200 Support Services - Instructional Staff	1,446,133.70				
2300 Support Services - Administration	4,382,306.03				
2400 Support Services - Pupil Health	1,661,194.26				
2500 Support Services - Business	776,159.99				
2600 Operation and Maintenance of Plant Services	6,768,705.29				
2700 Student Transportation Services	5,889,536.43				
2800 Support Services - Central	1,492,432.74				
2900 Other Support Services	936,233.53				
Total Support Services	\$25,913,100.89				
3000 <u>Operation of Non-Instructional Services</u>					
3200 Student Activities	1,712,704.28			101,967.51	
3300 Community Services	154,320.72				
Total Operation of Non-Instructional Services	\$1,867,025.00			\$101,967.51	
4000 <u>Facilities Acquisition, Construction and Improvement Services</u>					
4100 Site Acquisition Services - Original and Additional	3,785.00				
4200 Existing Site Improvement Services	8,528.00				
4300 Architecture and Engineering Services / Educational Specifications Development - Original and Additional	8,200.00				
4400 Architecture and Engineering Services / Educational Specifications - Improvements	23,735.00				
4500 Building Acquisition and Construction Services - Original and Additional					
4600 Existing Building Improvement Services	520,334.95				
Total Facilities Acquisition, Construction and Improvement Services	\$564,582.95				
5000 <u>Other Expenditures and Financing Uses</u>					
5100 Debt Service / Other Expenditures and Financing Uses	9,506,746.80				
5200 Interfund Transfers - Out	8,551,565.00				
Total Other Expenditures and Financing Uses	\$18,058,311.80				

LEA : 101631703 Canon-McMillan SD

Printed 10/30/2018 10:38:49 AM

	Capital Reserve (1431)(32)	Other Capital Projects Fund(39)	Debt Service(40)	Permanent(90)	Total
1000 Instruction					
1100 Regular Programs - Elementary / Secondary					28,415,494.95
1200 Special Programs - Elementary / Secondary					10,766,740.31
1300 Vocational Education					2,155,291.41
1400 Other Instructional Programs - Elementary / Secondary					373,679.00
1500 Nonpublic School Programs					15,542.38
Total Instruction					\$41,726,748.05
2000 Support Services					
2100 Support Services - Students					2,560,398.92
2200 Support Services - Instructional Staff					1,446,133.70
2300 Support Services - Administration					4,382,306.03
2400 Support Services - Pupil Health					1,661,194.26
2500 Support Services - Business					776,159.99
2600 Operation and Maintenance of Plant Services					6,768,705.29
2700 Student Transportation Services					5,889,536.43
2800 Support Services - Central					1,492,432.74
2900 Other Support Services					936,233.53
Total Support Services					\$25,913,100.89
3000 Operation of Non-Instructional Services					
3200 Student Activities					1,814,671.79
3300 Community Services					154,320.72
Total Operation of Non-Instructional Services					\$1,968,992.51
4000 Facilities Acquisition, Construction and Improvement Services					
4100 Site Acquisition Services - Original and Additional	208,921.73	44,987.08			257,693.81
4200 Existing Site Improvement Services					8,528.00
4300 Architecture and Engineering Services / Educational Specifications Development - Original and Additional		382,324.00			390,524.00
4400 Architecture and Engineering Services / Educational Specifications - Improvements					23,735.00
4500 Building Acquisition and Construction Services - Original and Additional		13,464,647.06			13,464,647.06
4600 Existing Building Improvement Services	402,362.05				922,697.00
Total Facilities Acquisition, Construction and Improvement Services	\$611,283.78	\$13,891,958.14			\$15,067,824.87
5000 Other Expenditures and Financing Uses					
5100 Debt Service / Other Expenditures and Financing Uses					9,506,746.80
5200 Interfund Transfers - Out					8,551,565.00
Total Other Expenditures and Financing Uses					\$18,058,311.80

	<u>General Fund(10)</u>	<u>Public Purpose Trust(27)</u>	<u>Other Compt Approved (28)</u>	<u>Athletic / Activity(29)</u>	<u>Capital Reserve (690. 1850)(31)</u>
TOTAL ACTUAL EXPENDITURES & OTHER FINANCING USES	\$88,129,768.69			\$101,967.51	

LEA : 101631703 Canon-McMillan SD

Printed 10/30/2018 10:38:49 AM

	<u>Capital Reserve (1431)(32)</u>	<u>Other Capital Projects Fund(39)</u>	<u>Debt Service(40)</u>	<u>Permanent(90)</u>	<u>Total</u>
TOTAL ACTUAL EXPENDITURES & OTHER FINANCING USES	\$611,283.78	\$13,891,958.14			\$102,734,978.12

LEA : 101631703 Canon-McMillan SD

Printed 10/30/2018 10:38:55 AM

PSERS Salary Data (Salary Data should relate to the General Fund only)

Amount	Description	Amount
	Total Salary Base for salaries subject to PSERS withholding	31,471,488.62
	Total Federally Funded salaries subject to PSERS withholding	276,897.37

Title I Expenditure Data

Amount	Description	Amount
	Expenditures Funded with Current Title I Funds	460,905.65
	Expenditures Funded with Carry over Title I Funds	142,186.72
Total Title I Expenditure Data		\$603,092.37

Benefits for Staff Relative to Collective Bargaining Agreements

	OBJECT	COVERED	NOT COVERED	TOTAL
10 General Fund	No Self Insurance data to report			
	211 Medical Insurance	6,852,021.73	480,770.32	7,332,792.05
	212 Dental Insurance	227,859.81	16,039.98	243,899.79
	215 Eye Care Insurance		2,519.24	2,519.24
	216 Prescription Insurance			
	271 Self-Insurance Medical Benefits			
	272 Self-Insurance Dental Benefits			
	275 Self-Insurance Eye Care Benefits			
	276 Self-Insurance Prescription Benefits			
	FUND TOTAL	\$7,079,881.54	\$499,329.54	\$7,579,211.08
50 Enterprise Fund	No Self Insurance data to report			
	211 Medical Insurance	193,935.81		193,935.81
	212 Dental Insurance	5,615.60		5,615.60
	215 Eye Care Insurance			
	216 Prescription Insurance			
	271 Self-Insurance Medical Benefits			
	272 Self-Insurance Dental Benefits			
	275 Self-Insurance Eye Care Benefits			
	276 Self-Insurance Prescription Benefits			
	FUND TOTAL	\$199,551.41		\$199,551.41
60 Internal Service Fund	No Self Insurance data to report			
	211 Medical Insurance			
	212 Dental Insurance			
	215 Eye Care Insurance			
	216 Prescription Insurance			
	271 Self-Insurance Medical Benefits			
	272 Self-Insurance Dental Benefits			
	275 Self-Insurance Eye Care Benefits			
	276 Self-Insurance Prescription Benefits			
	FUND TOTAL			
Total of All Funds		\$7,279,432.95	\$499,329.54	\$7,778,762.49

LEA : 101631703 Canon-McMillan SD

Printed 10/30/2018 10:38:57 AM

Function	Special Education (Prior Year)	Nonspecial Education (Prior Year)	Total (Prior Year)	Special Education (Current Year)	Nonspecial Education (Current Year)	Total (Current Year)
2120 Guidance Services	189,508.37	1,312,779.25	1,502,287.62	218,157.74	1,375,747.81	1,593,905.55
2140 Psychological Services	387,121.27		387,121.27	363,519.61		363,519.61
2150 Speech Pathology and Audiology Services						
2160 Social Work Services						
2260 Instruction and Curriculum Development Services	129,805.36	218,856.51	348,661.87	140,169.88	286,029.08	426,198.96
2350 Legal and Accounting Services	19,198.50	155,952.40	175,150.90	25,258.50	122,317.49	147,575.99
2420 Medical Services	1,054,277.59	3,860.00	1,058,137.59	924,502.06	4,000.00	928,502.06
2440 Nursing Services	98,905.21	634,957.39	733,862.60	100,169.17	631,687.53	731,856.70
2700 Student Transportation Services	1,303,761.10	4,473,501.00	5,777,262.10	1,449,728.07	4,439,808.36	5,889,536.43
Total	\$3,182,577.40	\$6,799,906.55	\$9,982,483.95	\$3,221,505.03	\$6,859,590.27	\$10,081,095.30

LEA : 101631703 Canon-McMillan SD

Printed 10/30/2018 10:38:59 AM

	(PRINCIPAL AMOUNTS ONLY)							
<u>GOVERNMENTAL FUNDS/ ACTIVITIES</u>	Short-Term Borrowing	General Obligation Bonds/Notes	Authority Building Obligations	Other Long-Term Debt	Other Post- Employment Benefits (OPEB)	Compensated Absences	Net Pension Liability	Total
1. Debt at Beginning of Fiscal Year		118,204,546.00		4,997,000.00	4,559,526.00	1,032,967.00	115,010,000.00	243,804,039.00
2. Additional Debt Incurred During Year				265,000.00	377,758.00	230,612.00	14,053,000.00	14,926,370.00
3. Retirements and Repayments		2,850,576.00		482,000.00	406,352.00	67,352.00	13,180,000.00	16,986,280.00
4. Debt at End of Fiscal Year		115,353,970.00		4,780,000.00	4,530,932.00	1,196,227.00	115,883,000.00	241,744,129.00
5. Accreted Interest at End Of Fiscal Year		22,144,999.00						22,144,999.00
6. Total Debt and Accreted Interest		137,498,969.00		4,780,000.00	4,530,932.00	1,196,227.00	115,883,000.00	263,889,128.00
7. Current Portion P&I - Due within 1 year		9,572,334.90						9,572,334.90
8. Interest Paid during current fiscal year		6,634,789.10						6,634,789.10

(PRINCIPAL AMOUNTS ONLY)							
<u>PROPRIETARY FUNDS</u>							
1. Debt at Beginning of Fiscal Year							
2. Additional Debt Incurred During Year							
3. Retirements and Repayments							
4. Debt at End of Fiscal Year							
5. Accreted Interest at End Of Fiscal Year							
6. Total Debt and Accreted Interest							
7. Current Portion P&I - Due within 1 year							
8. Interest Paid during current fiscal year							

LEA : 101631703 Canon-McMillan SD

Printed 10/30/2018 10:38:59 AM

Total Principal and Interest Payments Made by Your School - All Funds

Function	Fund		Principal (910)	Principal (920)	Interest (830)	Total (Principal +Interest)	Misc Other Uses (990)
5110	10	General Fund	2,850,576.00		6,634,789.07	9,485,365.07	
5110	20	Special Revenue Funds					
5110	30	Capital Projects Funds					
5110	40	Debt Service Fund					
5110	90	Permanent Fund					
5120	10	General Fund					
5120	20	Special Revenue Funds					
5120	30	Capital Projects Funds					
5120	40	Debt Service Fund					
Total Debt Payments - Governmental Funds			\$2,850,576.00		\$6,634,789.07	\$9,485,365.07	

Function	Fund		Principal (910)	Principal (920)	Interest (830)	Total (Principal +Interest)
5110	50	Enterprise Fund				
5110	60	Internal Service Fund				
5120	50	Enterprise Fund				
5120	60	Internal Service Fund				
Total Debt Payments - Proprietary Funds						

LEA : 101631703 Canon-McMillan SD

Printed 10/30/2018 10:38:59 AM

Debt Details
Governmental Funds/ Activities

Debt Category	Debt Issue Date (MM/YYYY)	Principal Amounts Only				Current Portion Due Within One Year (Principal and Interest)	Interest Paid During Fiscal Year
		Debt at Beginning of Fiscal Year	Additions	Reductions / Repayments	Debt at End of Fiscal Year		
General Obligation Bonds/Notes – CIB	10/2018	25,315,000.00		40,000.00	25,275,000.00	1,204,000.00	1,159,650.00
General Obligation Bonds/Notes – CIB	01/2017	24,180,000.00		115,000.00	24,065,000.00	1,137,875.00	1,036,050.00
General Obligation Bonds/Notes – CIB	01/2014	9,575,000.00		970,000.00	8,605,000.00	811,150.00	367,925.00
General Obligation Bonds/Notes – CIB	01/2014	23,780,000.00			23,780,000.00	1,067,000.00	1,067,000.00
General Obligation Bonds/Notes – CIB	12/2012	18,725,000.00		15,000.00	18,710,000.00	598,856.30	584,156.30
General Obligation Bonds/Notes – CIB	12/2012	1,640,000.00		355,000.00	1,285,000.00	401,616.10	39,896.30
General Obligation Bonds/Notes – CIB	03/2008	1,520,000.00		110,000.00	1,410,000.00	161,837.50	55,687.50
General Obligation Bonds/Notes – CAB	04/2002	3,576,916.00			3,576,916.00	620,000.00	
General Obligation Bonds/Notes – CAB	01/2001	2,929,115.00		15,336.00	2,913,779.00	40,000.00	24,664.00
General Obligation Bonds/Notes – CAB	12/1999	6,963,515.00		1,230,240.00	5,733,275.00	3,530,000.00	2,299,760.00
Other Long Term Debt/Liabilities		4,997,000.00	265,000.00	482,000.00	4,780,000.00		
Compensated Absences		1,032,967.00	230,612.00	67,352.00	1,196,227.00		
Other Post-Employment Benefits (OPEB)		4,559,526.00	377,758.00	406,352.00	4,530,932.00		
Net Pension Liability		115,010,000.00	14,053,000.00	13,180,000.00	115,883,000.00		
Totals for Debt Entered:		\$243,804,039.00	\$14,926,370.00	\$16,986,280.00	\$241,744,129.00	\$9,572,334.90	\$6,634,789.10

LEA : 101631703 Canon-McMillan SD

Printed 10/30/2018 10:38:59 AM

Accreted Interest Detail
Governmental Funds/ Activities

Debt Category	Debt Issue Date (MM/YYYY)	Beginning Accreted Interest	Additions	Reductions	Ending Accreted Interest	Ending bond Principal	Ending Principal Plus Accreted Interest
General Obligation Bonds/Notes – CAB	04/2002	4,960,799.00	495,043.00		5,455,842.00	3,576,916.00	9,032,758.00
General Obligation Bonds/Notes – CAB	01/2001	4,662,585.00	522,130.00	24,664.00	5,160,051.00	2,913,779.00	8,073,830.00
General Obligation Bonds/Notes – CAB	12/1999	12,727,291.00	1,101,575.00	2,299,760.00	11,529,106.00	5,733,275.00	17,262,381.00
Totals for Debt Entered:		\$22,350,675.00	\$2,118,748.00	\$2,324,424.00	\$22,144,999.00	\$12,223,970.00	\$34,368,969.00

LEA : 101631703 Canon-McMillan SD

Printed 10/30/2018 10:39:00 AM

General Fund (10)

Section 1: Tuition/Purchased Services as Reported within Expenditure Detail	Amount
Tuition Reported in General Fund Expenditures 1000-560	3,566,005.91
Purchased Services in General Fund Expenditures 1000-594 and 1000-597	1,878.95
Section 1 Total	\$3,567,884.86

Section 2: Tuition Paid to Institution Types During Fiscal Year	Tuition Paid For Nonspecial Education	Tuition Paid For Special Education	Total
1 1306 Institutions			
2 Institutionalized Children's Programs		1,878.95	1,878.95
3 Juveniles Incarcerated in Adult Facilities			
4 Residential Treatment Facilities			
5 Other Local Education Agencies	30,985.33		30,985.33
6 Brick and Mortar Charter Schools	136,440.60	40,686.96	177,127.56
7 Cyber Charter Schools	819,531.55	444,186.36	1,263,717.91
8 Career and Technology Centers	472,371.85		472,371.85
9 Approved Private Schools	23,875.60	375,065.58	398,941.18
10 PA Chartered Schools for the Deaf and Blind			
11 Private Residential Rehabilitative Institutions	40,338.11	963,942.57	1,004,280.68
12 Juvenile Detention Centers	212,394.42	6,186.98	218,581.40
13 Special Program Jointures			
14 Other Tuition Not Included Elsewhere In This Section			
Section 2 Total	\$1,735,937.46	\$1,831,947.40	\$3,567,884.86

1 .	<u>Student Transportation Services for Educational Field Trips</u>	33,000.58
2 .	<u>Student Transportation Services for Student Activities</u>	11,549.18
3 .	<u>Rental of Vehicles for Student Transportation Services</u>	
4 .	<u>Capital Reserve Funds</u>	

Include only district-owned transportation expenditures paid from State or local money.
DO NOT include federal expenditures or payments to contract service providers.
Contracted transportation services should not be recorded on this schedule.

LEA : 101631703 Canon-McMillan SD

Printed 10/30/2018 10:39:10 AM

Food Service / Cafeteria Operations Fund (51)

3000 Operation of Non-Instructional Services		Total
100 <u>Personnel Services – Salaries</u>		
100 Personnel Services – Salaries		652,867.00
Total Personnel Services – Salaries		\$652,867.00
200 <u>Personnel Services – Employee Benefits</u>		
210 Group Insurance – Contracted Provider		201,757.00
220 Social Security Contributions		45,620.00
230 PSERS Retirement Contributions		205,437.00
250 Unemployment Compensation		485.00
260 Workers' Compensation		5,940.00
Total Personnel Services – Employee Benefits		\$459,239.00
400 <u>Purchased Property Services</u>		
430 Repairs and Maintenance Services		3,975.00
Total Purchased Property Services		\$3,975.00
500 <u>Other Purchased Services</u>		
530 Communications		742.00
570 Food Service Management		1,168,310.00
580 Travel		2,318.00
Total Other Purchased Services		\$1,171,370.00
600 <u>Supplies</u>		
610 General Supplies		14,520.00
630 Food		137,243.00
Total Supplies		\$151,763.00
700 <u>Property</u>		
740 Depreciation		47,343.00
Total Property		\$47,343.00
Total 3000 Operation of Non-Instructional Services		\$2,486,557.00

LEA : 101631703 Canon-McMillan SD

Printed 10/30/2018 10:39:10 AM

Food Service / Cafeteria Operations Fund (51)

3100 Food Services	Elementary	Secondary	Federal	Total
100 <u>Personnel Services – Salaries</u>				
100 Personnel Services – Salaries				652,867.00
Total Personnel Services – Salaries				\$652,867.00
200 <u>Personnel Services – Employee Benefits</u>				
210 Group Insurance – Contracted Provider				201,757.00
220 Social Security Contributions				45,620.00
230 PSERS Retirement Contributions				205,437.00
250 Unemployment Compensation				485.00
260 Workers' Compensation				5,940.00
Total Personnel Services – Employee Benefits				\$459,239.00
400 <u>Purchased Property Services</u>				
430 Repairs and Maintenance Services				3,975.00
Total Purchased Property Services				\$3,975.00
500 <u>Other Purchased Services</u>				
530 Communications				742.00
570 Food Service Management			795,109.00	1,168,310.00
580 Travel				2,318.00
Total Other Purchased Services			\$795,109.00	\$1,171,370.00
600 <u>Supplies</u>				
610 General Supplies				14,520.00
630 Food				137,243.00
Total Supplies				\$151,763.00
700 <u>Property</u>				
740 Depreciation				47,343.00
Total Property				\$47,343.00
Total 3100 Food Services			\$795,109.00	\$2,486,557.00

LEA : 101631703 Canon-McMillan SD

Printed 10/30/2018 10:39:07 AM

Internal Service Fund (60)

2000 Support Services

Total

800 Other Objects

810 Dues and Fees

735.00

Total Other Objects

\$735.00

Total 2000 Support Services

\$735.00

LEA : 101631703 Canon-McMillan SD

Printed 10/30/2018 10:39:07 AM

Internal Service Fund (60)

2500 Support Services – Business

<u>Elementary</u>	<u>Secondary</u>	<u>Federal</u>	<u>Total</u>
-------------------	------------------	----------------	--------------

800 Other Objects

810 Dues and Fees			735.00
-------------------	--	--	--------

Total Other Objects			\$735.00
----------------------------	--	--	-----------------

Total 2500 Support Services – Business			\$735.00
---	--	--	-----------------

LEA : 101631703 Canon-McMillan SD

Printed 10/30/2018 10:39:07 AM

Internal Service Fund (60)

2510 Fiscal Services

Elementary

Secondary

Federal

Total

800 Other Objects

810 Dues and Fees

735.00

Total Other Objects				\$735.00
Total 2510 Fiscal Services				\$735.00

LEA : 101631703 Canon-McMillan SD

Printed 10/30/2018 10:39:07 AM

Internal Service Fund (60)				
2519 Other Fiscal Services	<u>Elementary</u>	<u>Secondary</u>	<u>Federal</u>	<u>Total</u>
800 <u>Other Objects</u>				
810 Dues and Fees				735.00
Total Other Objects				\$735.00
Total 2519 Other Fiscal Services				\$735.00

	<u>Food Service(51)</u>	<u>Child Care Operations(52)</u>	<u>Other Enterprise(58)</u>	<u>Internal Service(60)</u>	<u>Total</u>
2000 <u>Support Services</u>					
2500 Support Services - Business				735.00	735.00
Total Support Services				\$735.00	\$735.00
3000 <u>Operation of Non-Instructional Services</u>					
3100 Food Services	2,486,557.00				2,486,557.00
Total Operation of Non-Instructional Services	\$2,486,557.00				\$2,486,557.00
TOTAL ACTUAL EXPENDITURES & OTHER FINANCING USES	\$2,486,557.00			\$735.00	\$2,487,292.00