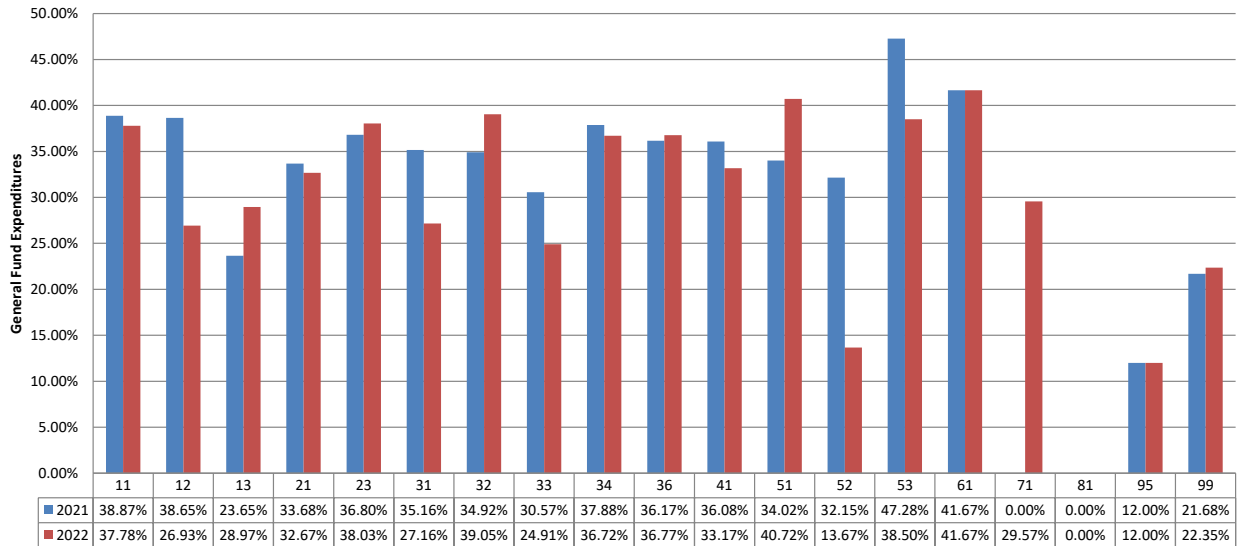


**TOMBALL INDEPENDENT SCHOOL DISTRICT**  
**FINANCIAL COMPARISON REPORT**  
As of November 28, 2022\*  
**General Fund, Food Service, and Debt Service Funds**  
**(AMOUNTS IN \$000)**

	<b>Budget</b>	<b>Actual</b>	<b>% of Budget Realized / Expended</b>
<b>General Fund Revenues</b>			
Property Taxes and P&I	\$ 122,550	\$ 9,461	7.7%
Co-Curricular Activity	57	416	730.6%
Investment Income	933	617	66.1%
Rents, Fees, Misc.	649	568	87.4%
State Rev.- Foundation Program	57,064	39,096	68.5%
State Revenue - TRS On-Behalf	9,902	2,162	21.8%
State Revenue - Other Programs	0	0	0.0%
Federal Revenue Programs	1,350	349	25.8%
<b>Total General Fund Revenues</b>	<b>\$ 192,505</b>	<b>\$ 52,669</b>	<b>27.4%</b>
<b>General Fund Expenditures by Function</b>			
11 Instruction	\$ 118,285	\$ 44,691	37.8%
12 Instr. Resource & Media Services	2,775	747	26.9%
13 Curriculum Dev./Instr. Staff Development	1,261	365	29.0%
21 Instructional Leadership	5,215	1,704	32.7%
23 School Leadership	11,275	4,288	38.0%
31 Guidance & Counseling Services	7,669	2,083	27.2%
32 Social Work Services	77	30	39.0%
33 Health Services	2,434	606	24.9%
34 Pupil Transportation	8,836	3,244	36.7%
36 Co-curr./Extracurr. Activities	4,354	1,601	36.8%
41 General Administration	7,838	2,600	33.2%
51 Plant Maintenance & Operations	18,582	7,567	40.7%
52 Security & Monitoring	1,567	214	13.7%
53 Data Processing Services	3,342	1,287	38.5%
61 Community Services	22	9	41.7%
71 Leases	400	118	29.6%
81 Fac. Acquisition & Construction	0	0	0.0%
95 Juvenile Justice Alt. Ed. Program	25	3	12.0%
99 Other Intergovernmental	1,370	306	22.3%
<b>Total General Fund Expenditures</b>	<b>\$ 195,327</b>	<b>\$ 71,463</b>	<b>36.6%</b>

**Budget Targets:**

**This chart represents the percentage actually expended of the appropriations approved by the Board by Function.**



TOMBALL INDEPENDENT SCHOOL DISTRICT  
 FINANCIAL COMPARISON REPORT  
 As of November 28, 2022\*  
 General Fund, Food Service, and Debt Service Funds  
 (AMOUNTS IN \$000)

	<u>Budget</u>	<u>Actual</u>	<u>% of Budget Realized / Expended</u>
<b><u>Food Service Fund Revenues</u></b>			
Food Sales	\$ 4,818	\$ 1,941	40.3%
State Revenue - TRS On-Behalf	239	88	36.6%
Federal/State Reimbursement	3,930	777	19.8%
Total Food Service Fund Revenues	<u>\$ 8,987</u>	<u>\$ 2,806</u>	31.2%
<b><u>Food Service Fund Expenditures</u></b>	<u>\$ 8,851</u>	<u>\$ 2,741</u>	31.0%
<b><u>Debt Service Fund Revenues</u></b>			
Property Taxes and P&I	\$ 51,573	\$ 4,167	8.1%
Investment Income	12	96	802.6%
State Rev.-Foundation Allocation	715	0	0.0%
Sale of Bonds	0	25,650	0.0%
Total Debt Service Fund Revenues	<u>\$ 52,300</u>	<u>\$ 29,913</u>	57.2%
<b><u>Debt Service Fund Expenditures</u></b>	<u>\$ 52,300</u>	<u>\$ 39,168</u>	74.9%

**\*\*Review additional tabs (worksheets) for reconciliations of amendments to adopted revenue and expenditure appropriations.**

\*Note: This report is based on preliminary information due to time constraints.



