



**Full Day of School for grades K-2**

**Door opens** at 7:50 am for K-8

**Dismissal** is at 3:35 PM for K-8

**Curriculum Instruction**

- Curriculum for all subject areas have started, students will be engaging in the following areas daily: Reading, Writing, Math, Science, and Social Studies.
- Students will continue to participate in Character Camp. Teachers facilitate Character Camp. The focus is on building strong systems and structures in our classrooms through Character Camp.
- Our goal is to build strong systems and structures so that students are ready to focus on academic learning.

**Homework Expectations**

- Students are expected to complete homework by their classroom teacher.
- Reading (Read and Response) and Math (C3) homework can be accessed online and must be completed weekly.
- Please ensure that your child completes their homework daily. The goal is for each class to attain a 100% return rate on homework at the end of the week.
- Homework will be checked **EVERY DAY**- thank you for helping your child build their work ethic by completing their homework every night.

**Important Dates:**

- **Friday, December 16 ½ Day for Students/PD for staff**
- **Monday, December 19, 2022 Winter Break students return on Monday, January 3, 2023**

**Attendance**

- Chronic Absenteeism can cause poor grades and is defined as **missing at least 10 percent (18 days) of days in a school year for any reason, including excused and unexcused absences.**

**School Safety and Behavior**

We take safety seriously at DEPSA. Please remind students to meet our expectations of DEPSA. we want students to come to school focused and ready to learn. Threats of any kind are not tolerated, the school will enforce the code of conduct as it relates to threats and any level.

**Arrival:** Student arrival time every day is 7:50am and may enter through Door #5. Students are marked tardy by 8:05am. Parents can only enter the building with a parent I.D. For all tardy students, please sign in at the main office door.

**Dismissal:** Student dismissal begins at 3:30pm. Students will dismiss out of Door #5 (Kindergarten dismissed out of cafeteria doors). Please make sure that you complete the emergency contact form with current information.

**Late Pick Up:** Late pick up begins 15 minutes after dismissal. All K-5 students are required to remain in the building after dismissal for safety reasons. Late pick up students are held in the cafeteria and parents are charged a \$20.00 late pick up fee.

**Enrichment Program:** Enrichment is offered before and after school. The annual registration fee plus one week's tuition must be paid in advance for your child to attend and participate in the enrichment program. Applications can be obtained from the main off



**It is now winter and also week six of the Second Quarter! With this Quarter let's create new goals as we continue to stay focused and make it an amazing year!**

**STUDENTS MUST WEAR UNIFORMS MONDAY - THURSDAY TO PARTICIPATE IN SPIRIT WEEK**

# DEPSA Holiday Spirit Week

DECEMBER 12 - 16

MONDAY - HOLIDAY SOCK DAY

TUESDAY - HOLIDAY HEADWEAR (ELF EARS, SANTA HAT, REINDEER EARS, ETC.)

WEDNESDAY - HOLIDAY ACCESORIES (TIE, HAIR BOWS, MASK, ETC.)

THURSDAY - UGLY SWEATER DAY (CHRISTMAS SWEATERS, SHIRTS AND DRESSES)

FRIDAY- HOLIDAY PAJAMAS

**NPFE Families, Check out these Sports & Afterschool Programs.**  
**Scan the QR code to sign up!**



Detroit City Lions Hotline • 313-673-6910  
Detroit City Lions Website • [www.detroitcitylions.org](http://www.detroitcitylions.org)

## Household Information

**Please see the attached Household information forms. Please complete this information online for your household in order for students to continue to receive free breakfast and lunch. This information is being requested in order to update the District's economically disadvantaged ratios for the state data collection. This ratio is the driver for funding at our school, specifically allocations for Title I and At-Risk. Please complete this information as soon as possible, to ensure they are accounted for properly. Thank you**

**Link to online survey:**

**<http://npfeschools.org/household-information-report/>**

## DeansList

### Welcome to DeansList!!

We are now using Dean's List, which is an essential program to track students behavior and improve school culture, by identifying students who need help, and designing interventions to ensure they arrive on time to school and everyday. Furthermore Dean's List notifies parents with phone calls, email, text messages, sends home absence letters, uniform violations and more. Dean's List will be taking the place of Class Dojo for communication etc.

**Parents please register for Dean's List and begin using it.  
Here's a short video you can review:**

### FAMILY PORTAL OVERVIEW

**<https://youtu.be/LJWdExKmw7Q>**

**Uniform violations-** sent daily at 4:00pm

**3+ Positive Behaviors-** sent on Thursday at 4:00pm

**3+ Areas of Opportunities-** sent on Friday at 4:00pm

### Stay tuned....

Student Reports will be rolled out next month. This report will provide details of your student's attendance and behavior data in one report

Parents can also become a part of DeansList by downloading DeansList for Families.

Starting in Q2 we will be moving from Dojo to Dean's List, so please download it and familiarize yourself with the features.

## Tutoring

After school tutoring at DEPSA will begin on Monday, November 14, 2022. Select students based on NWEA scores were invited to participate. Tutoring days are on Mondays, Tuesdays, and Thursdays from 4:00-5:30 pm. Students must meet behavior expectations and must be picked on time to participate. Tutoring will also be held on Saturdays from 9am - 12 pm beginning on Saturday, November 19, 2022. Parents are required to drop off and pick their child up at the cafeteria doors. After 2 late pick ups your child will not be able to participate in tutoring.

## Chronic Absenteeism

### Attendance Matters All Day Every Day!

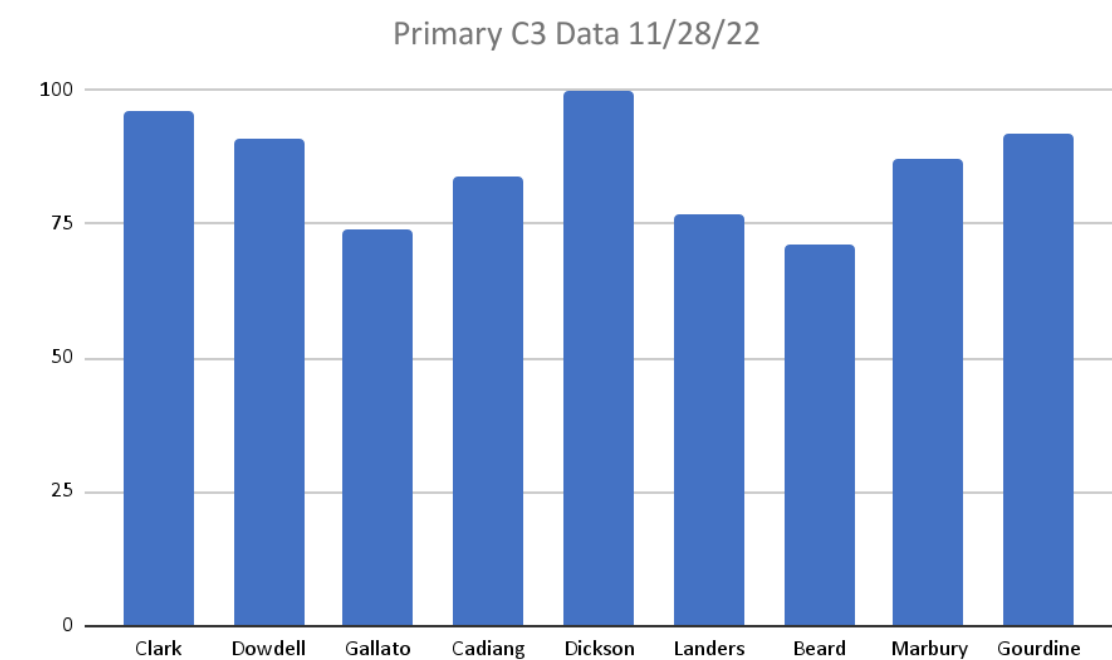
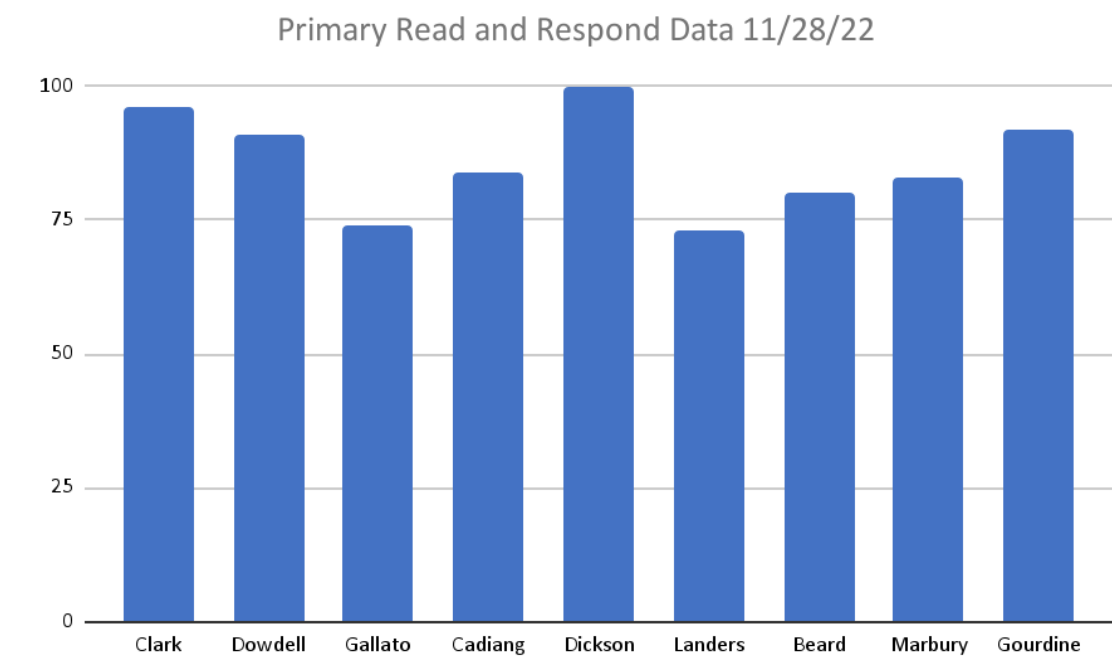
The State of Michigan had defined students as chronically absent if they missed more than 10 days of school within a given school year. • When students are chronically tardy it impacts their achievement • Being tardy impedes student learning and they miss out on instruction which can negatively impact their grade • Research indicates when students are chronically tardy have lower GPAs, lower scores on standardized assessments, and lower graduation rate.

Primary Chronic absenteeism rate the first month of school is: **40% the goal is to decrease this rate by 15% by the end of October please send students to school daily and on time, when students are tardy they are missing the most important subject which is reading, and when they are absent they are missing all subjects.**

## Read & Respond and C3 Homework

The expectation is for students to complete homework every night and to return every day for teacher feedback. Please make and take the time now to push students on expectations with quality of work and accountability with turning in every day. The goal is for each class to attain a 100% return rate on homework at the end of the week. Here are the results of last week's homework!

A big shout out to those classes below who had 90% or higher:  
Dickson, Gallato, and Gourdine



- Parent Tip**
1. **Keep distractions to a minimum. Students should find a quiet place to be able to complete their work.**
  2. **Make sure students do their own work. Homework is reinforcement of the skills students are learning in school. Parents should make suggestions and help with directions.**
  3. **Praise their efforts. Celebrate your child’s effort and success. Post their grades up within your home.**

**Important:**

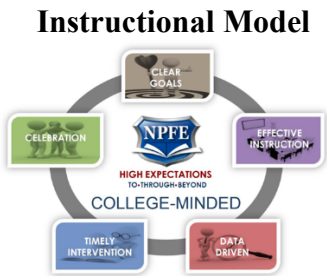
- **Masks are required each and everyday for students as it a part of their uniforms**

**Mission**

New Paradigm for Education (NPFE) mission is to be a catalyst to grow and sustain high performing schools where scholars are empowered to be global citizens and lifelong learners.

**Vision**

Every student excels as an engaged thoughtful citizen by forging new pathways to contribute to their community.



Our New Paradigm Instructional Model are the pillars for the work we do every day, to set high standards for our children. We focus on setting clear goals, making sure effective instruction takes place in our classroom, ensuring we are making data driven decisions, providing timely intervention as needed, and celebrating our progress.

**NPFE Annual Goals**



- **NWEA-** 60% or more of our students will meet their NWEA GOALS fall to spring targets in both reading and math
- **M-Step/PSAT-** proficiency will increase in both ELA and Math by 20% for grades 3-10
- **Attendance Goals-** Average daily attendance will be at 95% by June 2023; Chronic absenteeism will decrease by 15% in comparison to the 2021-2022 school year
- **Intervention-** Student usage will average 8% or higher during scheduled intervention time
- **Coaching Cycle-** Leaders will complete a minimum of 8 complete coaching cycles per teacher during the 2022-2023 school year.

Birthday Celebrations

All Birthdays are ONLY to be celebrated on FRIDAY’S

STUDENT UNIFORM PROCEDURE

GIRLS	BOYS
• Plaid (red and black) skirt	• White button up collared shirt
• White button up collared blouse	• Black chinos
• Plaid criss cross tie	• Black school shoes
• Black school shoes	• Red tie
• White, red or black tights, knee high socks	• White or black socks
• Washable mask	• Washable mask

Students are expected to wear DEPSA uniform daily. Uniform violations will begin going out this week for students who are not in complete uniform. Sweaters may be worn if they are solid red for girls or solid black for boys. Hooded sweatshirts/sweaters are not permitted. **ALL** student and staff will be required to adhere to social distancing guidelines and will be required to wear a mask in the building.

Staff Information

ADMIN	Emails	Ext.
Withers/Principal	gwithers@npfeschools.org	1154
Mrs. Carter/SSS	vcarter@npfeschools.org	1152
KINDERGARTEN	Teacher Emails	Ext.
Ms. Dowdell	bdowdell@npfeschools.org	1154
Mr. Clark	myronclark@npfeschools.org	1176
FIRST GRADE	Teacher Emails	Ext.
Mrs. Dickson	kdriver@npfeschools.org	1177
Ms. Landers	dlanders@npfeschools.org	1178
Ms. Beard	abeard@npfeschools.org	1179
SECOND GRADE	Teacher Emails	Ext.
Mr. Gourdine	lgourdine@npfeschools.org	1181
Ms. Marbury	bmarbury@npfeschools.org	1182

PBIS

Our students have rules, rewards, and consequences. We celebrate our students for meeting the behavioral expectations.

- When students follow all of their classroom procedures and school rules, teachers and staff may give them points on Class Dojo.
- When students earn enough points, they get rewarded at the end of the month with class parties or other rewards for good behavior.
- **Students who meet behavior expectations will participate in our PBIS activity on December 16, it will be a special treat so let’s encourage students to earn their points.**





# Holidays Around the World Bulletin Boards



