

# 주니어 대학의 밤 대학 입시 설명회





# 우리가 누구인지/우리가 하는 일





# 2022년 졸업생을 위한 대학 상담 뉴스

528개 학교 지원- 179개  
캠퍼스 참석

6 국제 대학에 참석

평균 6개 대학에  
지원

30 대학 수준의 운동  
경기에서 경쟁



더 많은 지원 = 더 나은 기회?



# 2022년 졸업생을 위한 주요 10개 학교



# "할 일" 타임라인

- Mr. Klasen 또는 Ms. Lepage와 예약하기
- 대학 search
- 캠퍼스 방문
- ACT 및/또는 SAT 등록

- 지원하는 대학 목록을 좁히십시오.
- FAFSA 서류 작성
- 에세이 작성

- 카운슬러와 만나 졸업 이후 계획에 대해 논의하십시오.

주니어

시니어

1월

2월

3월

4월

5월

6월

7월

8월

9월

10월

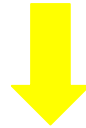
11월

12월



# 진학 상담 예약

Our philosophy is to help guide our students in their journey to find the right fit. In guiding our students to find the right fit we value helping our students to find their voice.



## College Appointments

Beginning in December of a student's junior year, students and parents may **schedule appointments** with one of our college counselors. Our counselors are also available for either first time meetings with Seniors or follow up meetings with students and parents for a more in depth discussion about a student's list of schools and finding the right fit for them.

## Programs and Activities

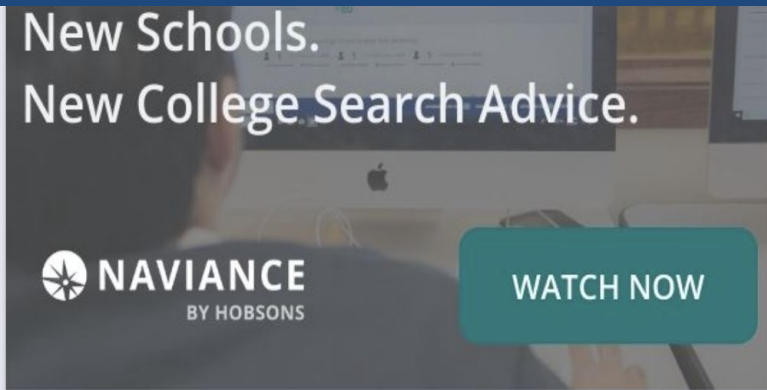
- + Senior Information
- + Senior Programs
- + Junior Programs
- + Sophomore Programs

## College Information

- + College Visits
- + Community College
- + College Application Procedures
- + Senior College Counseling Appointments



# 진학 상담 예약



Resources to get ready

 Document Resources

## From My School

### LINKS

College Appointment 

FAFSA 

ACT 

SAT 



### PAGES

Your school has no new pages. Check back later.

### UPDATES

Your school has no new updates. Check back later.



# 예정된 프로그램

- 주니어 등록 회의 - 1월
- New Trier의 Gap Fair - 1월 28일(오후 12시~오후 3시)
- 대학 콜로키움 - 2월 25일(오전 10시-오후 2시 30분)
- 대학 박람회 @ GBN - 4월 13일(오후 6:30-오후 8:30)
- 대학 에세이 쓰기 워크숍 - 5월/6월
- 공통 응용 워크숍 - 8월
- 시니어 개별 미팅 - 9월
- 시니어 칼리지의 밤 - 9월
- 시니어 칼리지 재정의 밤 - 10월
- FAFSA 접수완료 워크숍 - 10월

## Marquette University ❤️

Communicate ▾

[Apply online](#)

Learn More

## Overview

## Studies

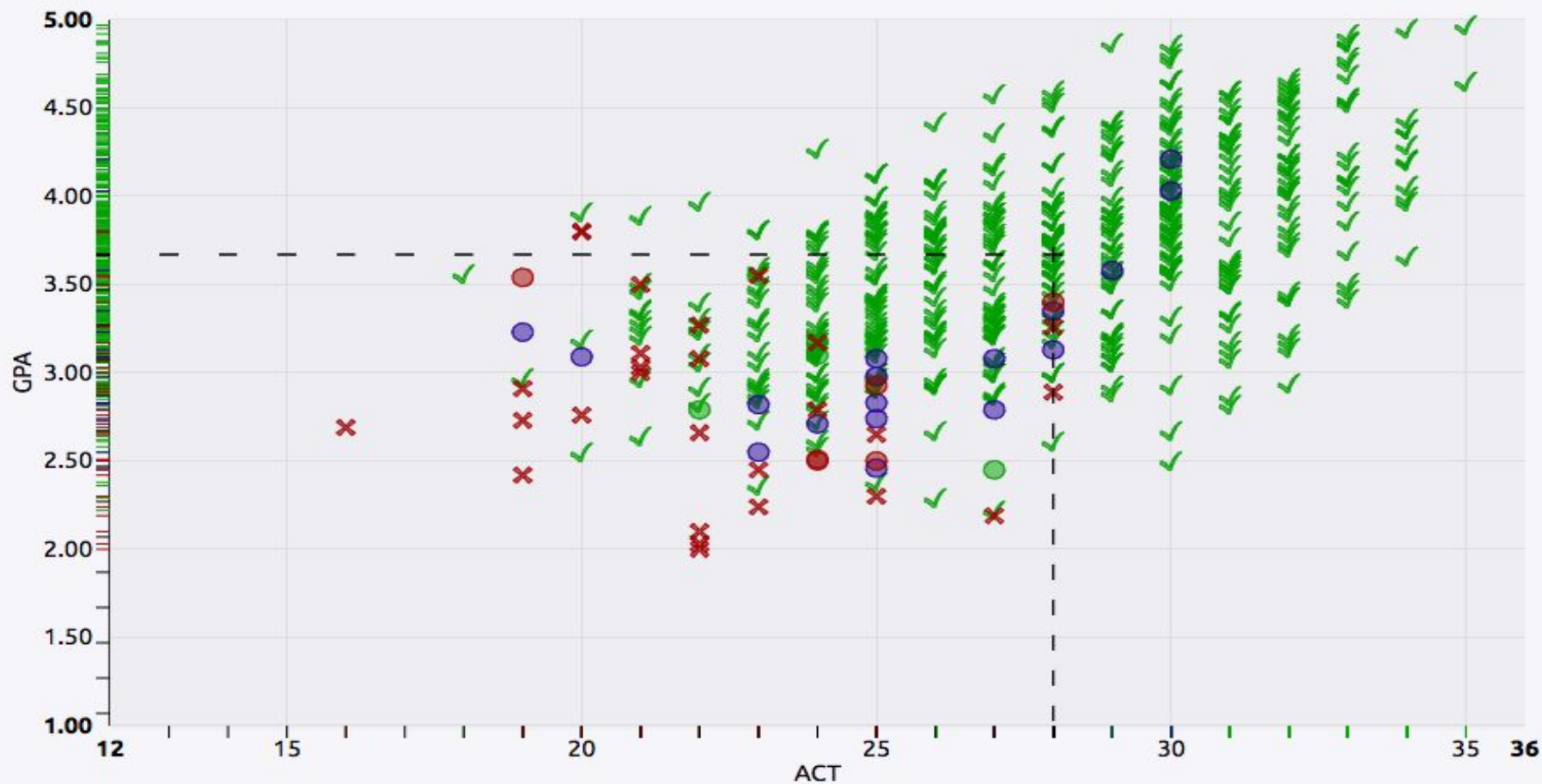
## Student Life

## Admissions

### Costs

## Profile

**Comparing** Weighted GPA **with** ACT





# 나비앙스 스캐터그램

University of Wisconsin-Madison ♥

Communic

Overview

Studies

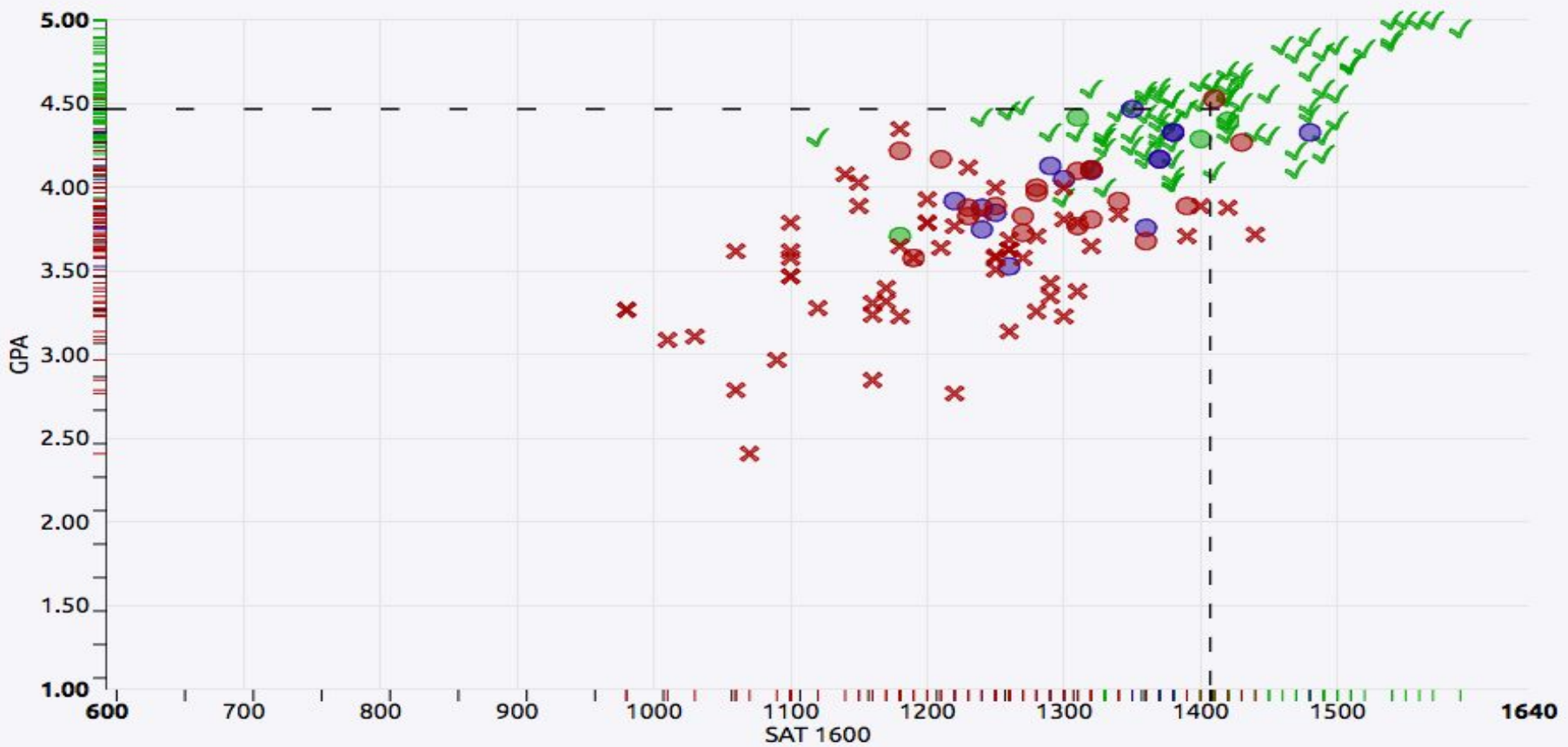
Student Life

Admissions

Costs

## Scattergrams | Applications for Glenbrook South High School ⓘ

Comparing Weighted GPA with SAT (1600 Scale) ⌵



# 나비앙스 스캐터그램

Vanderbilt University 

Virtual Tour

Communicate ▾

Apply Online

Learn More ▾

Overview

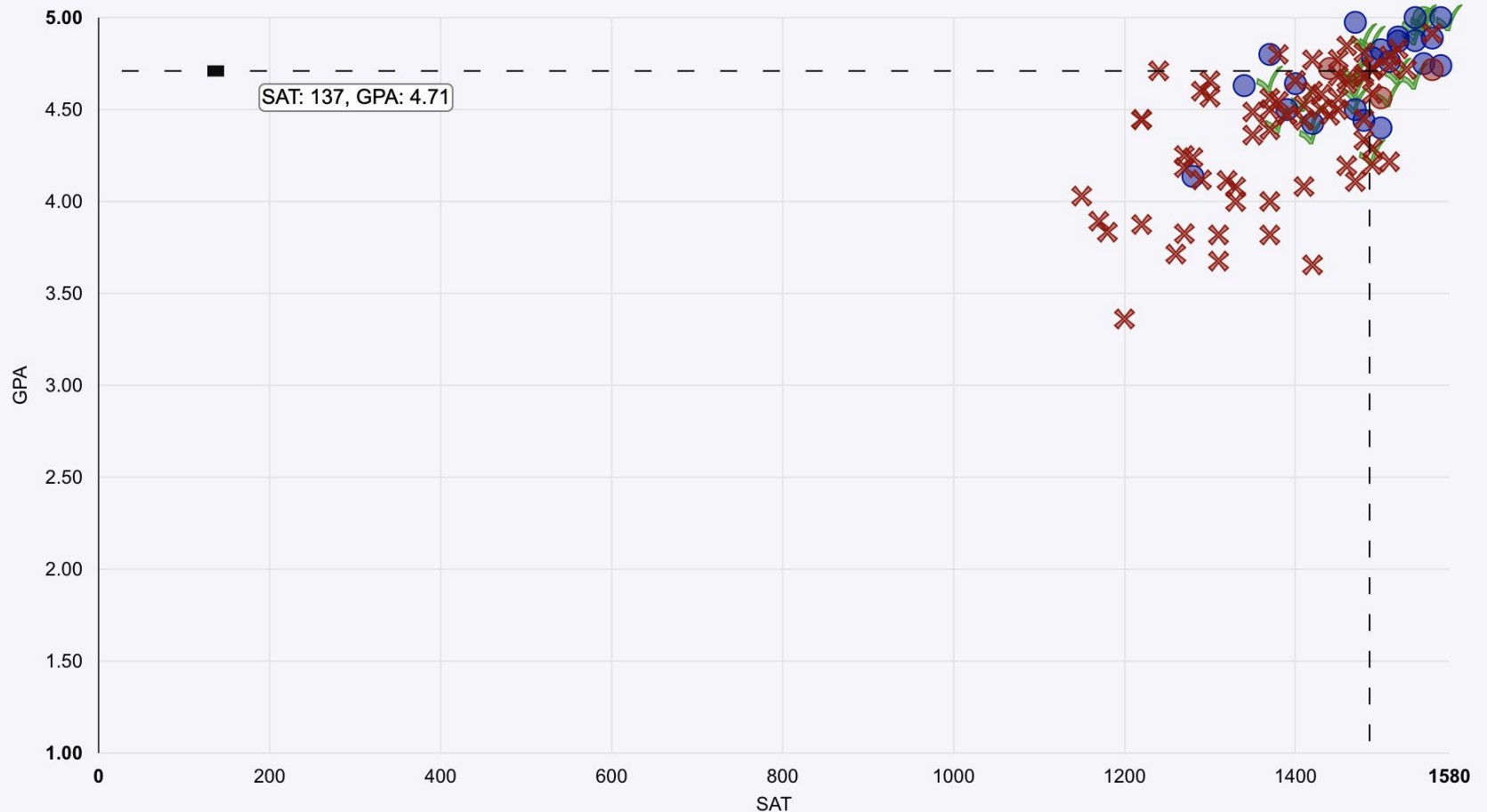
Studies

Student Life

Admissions

Costs

Comparing Weighted GPA with SAT (1600) ▾





# 나비앙스 칼리지 목록

Tommy Titan Class of 2022



General Plan Scores Assessments Colleges eDocs Resume Scholarships Journal Documents Careers Success Plan Post-grad

[active applications](#) [milestones](#) [history](#) [graphs](#) [prospective colleges](#) [comparison](#) [event registrations](#)

PROSPECTIVE COLLEGES

[add](#)

[Print summary](#) | [Print detail](#)

<input type="checkbox"/> all	Date Added	Added By	College	Delivery Type	Interest	Expect
<input type="checkbox"/>	10/02/2018	student	Colgate Univ		N/A	N/A
<input type="checkbox"/>	11/29/2018	counselor	U of Dayton		N/A	N/A
<input type="checkbox"/>	11/29/2018	counselor	Denison Univ		N/A	N/A
<input type="checkbox"/>	11/29/2018	counselor	Marquette Univ		N/A	N/A
<input type="checkbox"/>	11/29/2018	counselor	U of Texas Austin		N/A	N/A
<input type="checkbox"/>	11/29/2018	counselor	U of Wisconsin Madison		N/A	N/A

Select apps and:

# 추가 온라인 자료

College ScoreCard

College Board -Big Future

College Niche

Compass Education Group

College Transitions -DataVerse

NICHE 

Find a college or university ...



In America



Log In

Sign Up

College Search

College Rankings

Scholarships

\$2,000 No Essay Scholarship

Admissions Calculator



 Write a Review



## 2019 Best Colleges in America

The Best Colleges ranking is based on rigorous analysis of academic, admissions, financial, and student life data from the U.S. Department of Education along with millions of reviews from students and alumni. The ranking compares more than 1,000 top colleges and universities in the U.S. [Read more on how this ranking was calculated.](#)



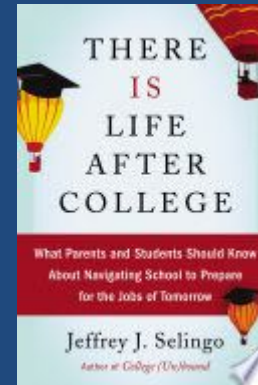
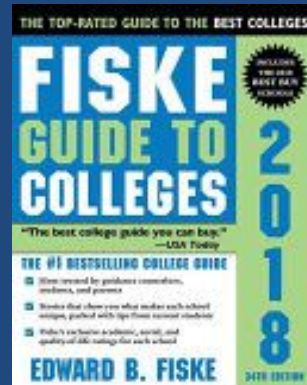
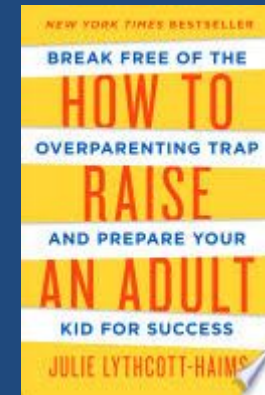
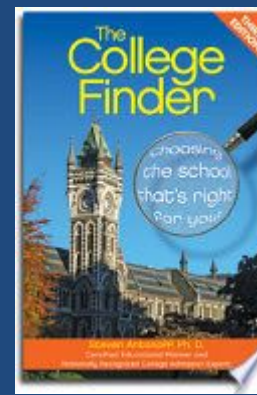
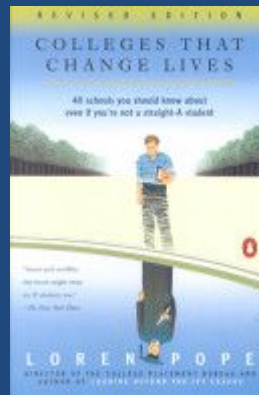
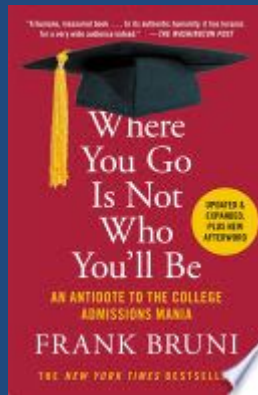


# 추가 재정 지원 자료

Fafsa.gov  
Naviance  
Fastweb.com  
Cappex.com  
Chegg.com  
Goingmerry.com



# 추천 대학진학 서적



# 대학은 무엇을 찾고 있습니까?

- 고등학교 성적
- 도전적인 커리큘럼
- 시험 점수
- 관심 표명
- 에세이/작문 샘플
- 추천서
- 과외 활동/재능





# NACAC 입학 동향 설문조사

FACTORS IN ADMISSION DECISIONS: FIRST-TIME FRESHMEN, FALL 2017

Factor	N	Considerable Importance	Moderate Importance	Limited Importance	No Importance
Grades in All Courses	220	74.5	15.0	5.5	5.0
Grades in College Prep Courses	220	73.2	16.8	5.9	4.1
Strength of Curriculum	219	62.1	21.9	8.7	7.3
Admission Test Scores (SAT, ACT)	221	45.7	37.1	12.2	5.0
Essay or Writing Sample	220	23.2	33.2	24.1	19.5
Student's Demonstrated Interest	218	16.1	23.9	28.0	32.1
Counselor Recommendation	218	15.1	40.4	26.6	17.9
Teacher Recommendation	219	14.2	40.2	26.5	19.2
Class Rank	220	9.1	29.1	34.1	27.7
Extracurricular Activities	219	6.4	42.9	32.0	18.7
Portfolio	219	6.4	11.9	26.9	54.8
Subject Test Scores (AP, IB)	219	5.5	18.3	35.2	41.1
Interview	219	5.5	16.4	28.3	49.8
Work	217	4.1	28.6	36.9	30.4
State Graduation Exam Scores	218	2.3	8.7	18.8	70.2
SAT II Scores	216	1.9	5.6	14.8	77.8

SOURCE: NACAC Admission Trends Survey, 2018–19.

# 테스트 정보

- 학생들은 ACT 또는 SAT를 두 번 이상 볼 수 있습니다.
- 대학은 학생이 제출한 최고 점수를 받습니다.
- ACT/SAT에서 공식 시험 점수를 요청하는 것은 학생의 책임입니다.
- 시험 선택/점수 자진 보고

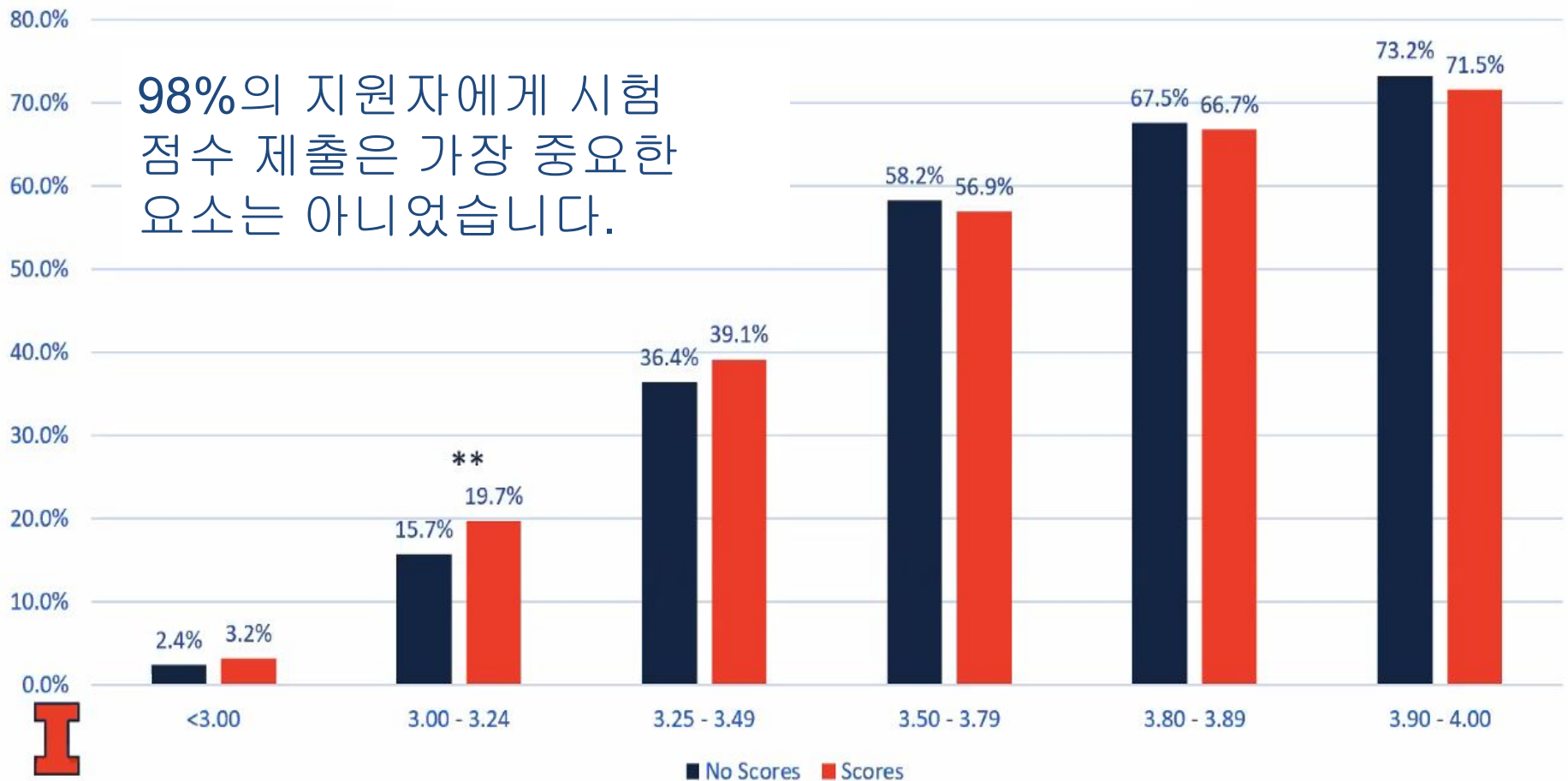


# 테스트 옵션

적용 대상: 44%  
합격자: 40%  
등록 대상: 42%

주요 GPA에 따른 UIUC First Choice 입학률  
(점수 발신자 vs 비점수 발신자)

98%의 지원자에게 시험  
점수 제출은 가장 중요한  
요소는 아니었습니다.

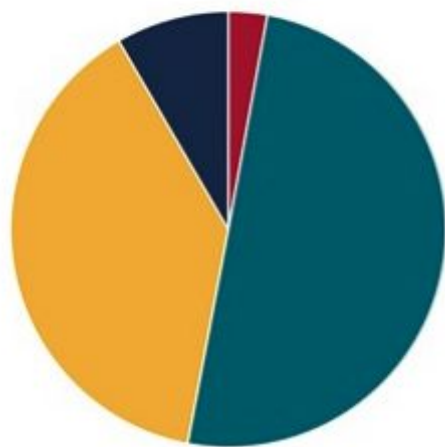




# Mass Adoption of TO

## *Class of 2021*

Sample includes 416 US colleges and universities that are widely recognized nationally, including all institutions that are moderately to highly selective\*



Testing Policy	#	%
SAT/ACT Required	12	2.9%
Test Optional–1 year trial	140	33.6%
Test Optional–multiyear trial	69	16.5%
Test Optional–permanent	161	38.6%
Test Free	35	8.4%

\*Source: [compassprep.com/college-profiles](https://compassprep.com/college-profiles)

당신의 학생에게 적합한 시험은  
무엇입니까?

A photograph of a person holding a bright yellow rectangular sign. The sign has black Korean text. The person's hands are visible at the top corners of the sign. The background is slightly blurred, showing what appears to be an outdoor setting with other people and structures.

학생은 표준화되지  
않습니다

# 테스트 일정



- 2월 11일
- 4월 15일
- 6월 10일\*
- 7월 15일
- 9월 9일\*
- 10월 21일

- March 11
- April 12 (State Test)\*
- May 6
- June 3\*
- August 26
- October 1

\*GBS는 테스트 사이트입니다.



# 시험 준비

- 글렌브룩 코스

SAT는 1월 17일에 시작합니다.

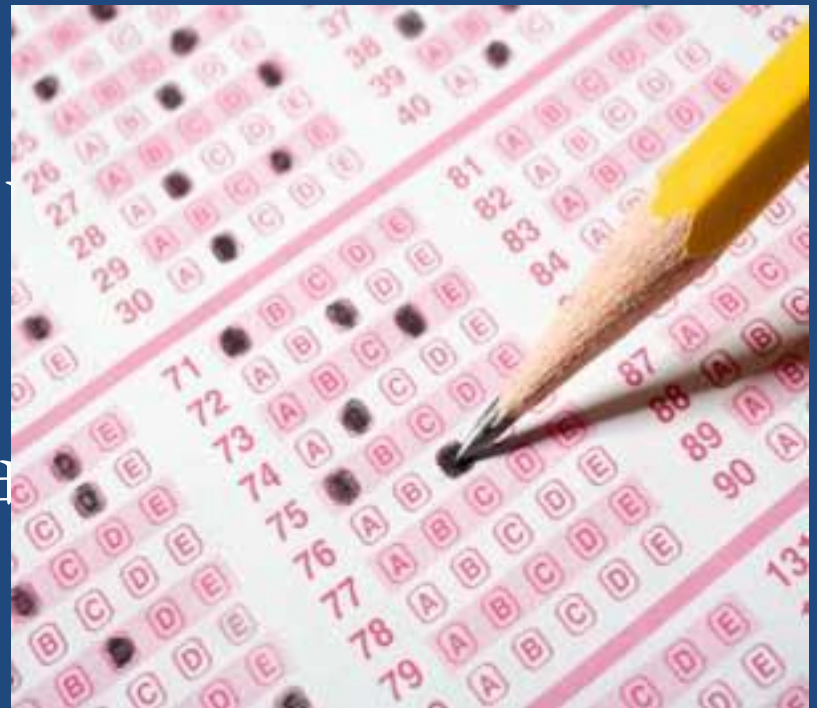
ACT는 2월 2일에 시작합니다.

- 칸아카데미

무료 온라인 SAT 준비

- ACT 아카데미

무료 온라인 ACT 준비



# 에세이 숫자와 통계를 넘어

- 학생의 글쓰기 샘플
- 학생이 페이지를  
벗어납니다.
- 무엇이 당신을 움직이게  
하는지에 대한 통찰력
- 5월에 제공되는 에세이  
쓰기 워크숍 및 시니어  
영어 수업
- TLC의 대학 에세이 튜터



**KEEP  
CALM  
and  
WRITE  
THE ESSAY**

# 개인 진술 및 보충 에세이

The essay demonstrates your ability to write clearly and concisely on a selected topic and helps you distinguish yourself in your own voice. What do you want the readers of your application to know about you apart from courses, grades, and test scores? Choose the option that best helps you answer that question and write an essay of no more than 650 words, using the prompt to inspire and structure your response. Remember: 650 words is your limit, not your goal. Use the full range if you need it, but don't feel obligated to do so. (The application won't accept a response shorter than 250 words.)

- ☐ Some students have a background, identity, interest, or talent that is so meaningful they believe their application would be incomplete without it. If this sounds like you, then please share your story.
- ☒ The lessons we take from obstacles we encounter can be fundamental to later success. Recount a time when you faced a challenge, setback, or failure. How did it affect you, and what did you learn from the experience?
- ☐ Reflect on a time when you questioned or challenged a belief or idea. What prompted your thinking? What was the outcome?
- ☐ Reflect on something that someone has done for you that has made you happy or thankful in a surprising way. How has this gratitude affected or motivated you?
- ☐ Discuss an accomplishment, event, or realization that sparked a period of personal growth and a new understanding of yourself or others.
- ☐ Describe a topic, idea, or concept you find so engaging that it makes you lose all track of time. Why does it captivate you? What or who do you turn to when you want to learn more?
- ☐ Share an essay on any topic of your choice. It can be one you've already written, one that responds to a different prompt, or one of your own design.

## "Why Northwestern" Statement :

While other parts of your application give us a sense of who you are, we are also excited to hear more about how you see yourself engaging with the larger Northwestern community.

In 300 words or less, help us understand how you might engage specific resources, opportunities, and/or communities here. We are curious about *what* these specifics are, as well as *how* they may enrich your time at Northwestern and beyond.

Do you plan to complete the "Why Northwestern" Statement?  
(We strongly encourage a response, as your answer will help us connect the dots across your application to imagine what kind of college student you might become.)\*



# 모두가 공짜를 좋아하죠

College Essay Guy®

[ABOUT](#) [STUDENTS](#) [COUNSELORS](#) [ONE-ON-ONE](#) [FREE RESOURCES](#) [BLOG](#) [PODCAST](#) [LOG IN](#) [CONTACT](#)

## The Free Stuff

FREE COLLEGE ESSAY RESOURCES FOR STUDENTS, PARENTS, AND COUNSELORS



# 교사 vs. 카운셀러 추천서

- 교사는 수업의 맥락 내에서 학생에 대한 관점을 제공합니다.
- 카운슬러는 학생이 GBS/커뮤니티/일에 기여한 것에 대해 보다 "글로벌" 시점에서의 관점을 제공합니다.
- 학생은 자신을 잘 "채점"하는 교사뿐만 아니라 자신을 잘 "아는" 교사에게 요청해야 합니다.
- 교사 추천은 반드시 5개의 학과목 중 1개여야 합니다.



# 교과외 활동 extracurricular activities

## Why 대 What

“대학은 학생들이 무엇을 하는지보다 왜 하는지에 훨씬 더 관심이 있습니다. 우리는 이벤트에 열광하는 것이 아니라 그것이 당신에게 무슨 의미인지, 당신이 자신에 대해 배운 무엇인가에 있습니다..”

*Jim Bock, Swarthmore* 입학처장





# 입증된 관심



## COLORADO COLLEGE

FALL 2018	APPLICATIONS	ADMITS	ADMIT %	COMMITTS	YIELD %
ED I Applications	705	246	34.9%	235*	96%
ED II Applications	467	56	12%	47*	84%
Combined ED I/ED II	1172	302	25.7%	282	93.4%
EA Applications	3487	640	18.3%	136	21.2%
RD Applications	3896	172	4.4%	38	22%
Other: Gap/Defer/WL	-	170	-	90	-
TOTAL Applications	8555	1284	15%	546	42.5%



COLORADO  
COLLEGE



## Is there an advantage/benefit to applying Early Decision?

---

Yes. Early Decision applicants are part of a much smaller pool of candidates. During the 2020-21 admission cycle, Boston College received 3,225 Early Decision applications (ED I and II combined). 39% of ED applicants were admitted, filling 48% of the Class of 2025. During Regular Decision, the remaining 52% of the class was filled from an applicant pool of nearly 37,000 applications. The admit rate for Regular Decision applicants was 17%.

Because Early Decision attracts a small, but competitive pool of candidates, the acceptance rate is higher than at Regular Decision. Early Decision allows you to demonstrate your commitment to enroll at Boston College. It also enhances our ability to enroll students interested in the Jesuit, Catholic approach to education, personal growth, and service of others.

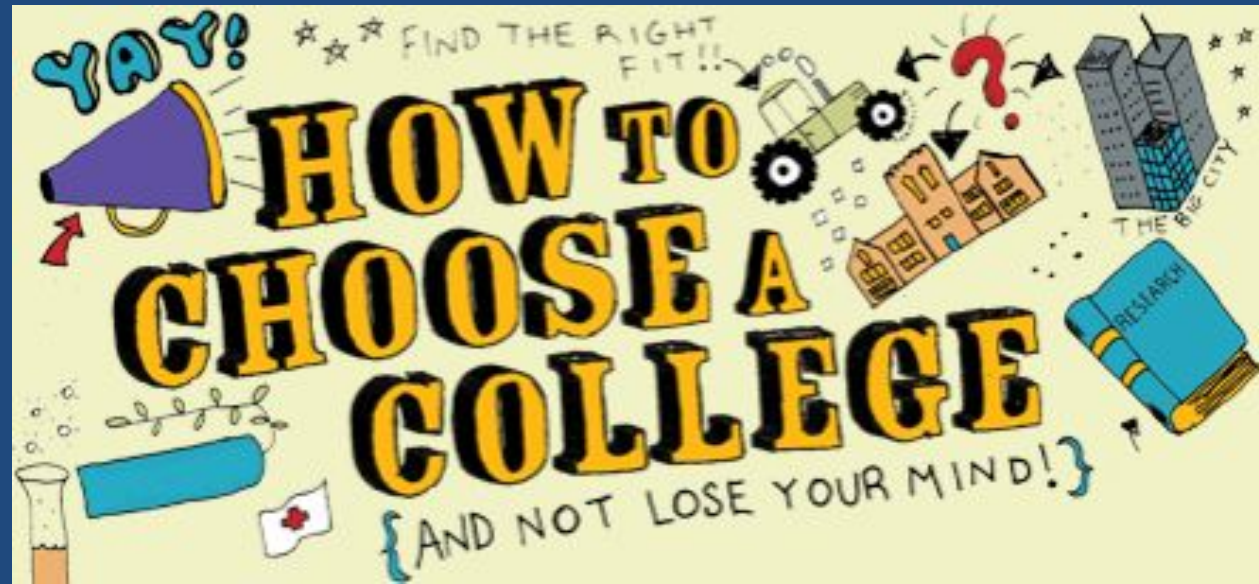


# 제도적인 우선순위



# The 5 P's: 대학을 선택하는 방법- 다섯가지 P

- Preference
- Place
- Program
- People
- Price





# Preference

Size



Academic Fit



Activities



Athletics





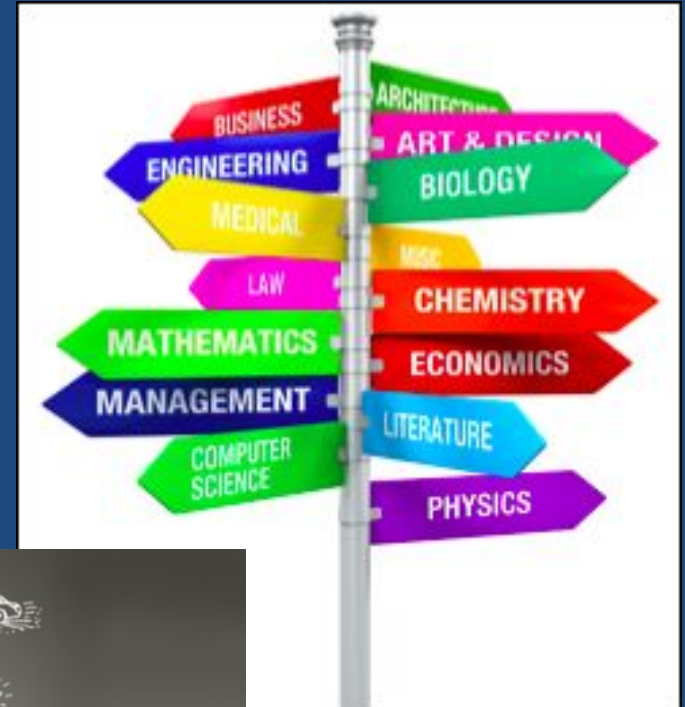
# Place

- Have a Family Discussion about Location
- In-state vs. Out-of-state, commuting vs. living on campus
- Urban, Suburban, Rural



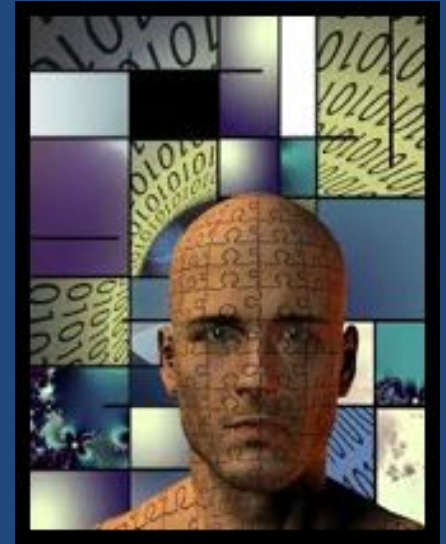
# Program

Common Question:  
무슨 과목을 전공하고  
싶습니까?



# Specialty Programs

Saint Louis University Medical Scholars  
Program



Union College eight year  
Medical Program with  
Albany Medical College



# Honors Programs



**Barrett  
The Honors  
College**

**Arizona State  
University**







# Graduate Outcomes

2017-2018

## Medical/Dental/Veterinary

University of California, San Francisco  
University of Michigan  
University of Arizona  
University of California Davis DVM  
Cornell University DVM  
Colorado State University DVM  
University of Pennsylvania DVM  
Harvard University DMD  
University of Colorado DDS  
University of Southern California DDS

## Law

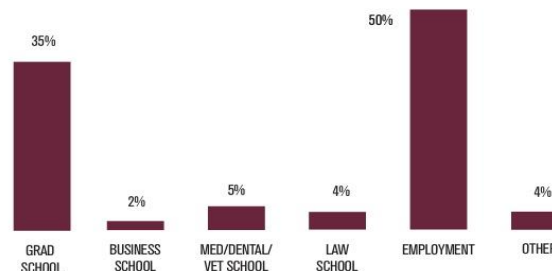
New York University  
Duke University  
Cornell University  
Georgetown University  
University of Texas, Austin  
Washington University  
University of Southern California  
Emory University  
Arizona State University  
University of Alabama

## Graduate Programs

PhD in Biomedical Engineering at Johns Hopkins University  
PhD in Genetics at Stanford University  
PhD in Biology at Massachusetts Institute of Technology  
PhD in Immunology at Columbia University  
PhD in Political Science at University of Iowa  
PhD in Pharmacology at Cambridge University  
PhD in Bioengineering at Duke University  
PhD in Computer Science at University of Virginia  
PhD in Physics at University of California, San Diego  
PhD in Bioinformatics at University of California, San Francisco  
PhD in Chemical Oceanography at MIT/Woods Hole Oceanographic Institution  
PhD in Structural Engineering at Arizona State University  
MBA at Harvard University  
MBA at Stanford University  
MS in International Relations & Politics at University of Cambridge  
MS in Science of Healthcare Delivery at Arizona State University  
MCS in Computer Science Big Data Systems at Arizona State University  
MS in Education at Northwestern University  
MS in Media Arts & Sciences at Massachusetts Institute of Technology  
MS in Aeronautics & Astronautics at Stanford University  
MA in English at Arizona State University  
MPA in Public Finance at Arizona State University  
MPH in Public Health at Columbia University  
MED in Higher Education Administration at Pennsylvania State University  
MMP in French Horn at University of Texas, Austin  
MPP in Public Programs at George Washington University  
MM in Music Performance at Boston Conservatory at Berklee  
MA in Global Affairs & Management at Arizona State University  
MA in Classical Archaeology at Brandeis University  
MA in Sustainability at Arizona State University  
International Financial Law at London School of Economics  
MTax in Taxation at Arizona State University

All lists are representative samples from this graduating class  
barretthonors.asu.edu/alumni

**ASU Barrett**  
The Honors College  
Arizona State University



## National Scholarships Awarded Spring 2018

2 NSEP BOREN	1 TRUMAN	1 GATES-CAMBRIDGE
21 FULBRIGHT	1 UDALL	3 FULBRIGHT SUMMER UK
1 MARSHALL	2 KILLAM	2 GOLDWATER

## Employment

Industrial Engineer for The Walt Disney Company in Anaheim, CA  
Registered Nurse at the Mayo Clinic in Scottsdale, AZ  
Software Development Engineer at Amazon in Seattle, WA  
Credit Risk Analyst at Goldman Sachs in New York City, NY  
Research Fellow at Babbitt Center for Land & Water Policy in Phoenix, AZ  
Economics Teacher at Great China International in Chengdu, China  
Real Estate Accountant at CBRE in Phoenix, AZ  
2nd Lieutenant in the United States Marine Corps  
Mechanical Engineer at Microsoft in Seattle, WA  
Procurement Analyst for Apple in Cupertino, CA  
Founder of United Safety Technologies, LLC in Glendale, AZ  
Behavioral Therapist at AFT Autism in Paris, France  
Sponsorship Associate at US Green Building Council in Washington, D.C.  
Aerospace Vehicle Designer & Mission Analyst at NASA Johnson Space Center in Houston, TX  
Publicity Coordinator at LAVIDGE in Phoenix, AZ  
Supply Chain Analyst at Intel in Chandler, AZ  
Executive Coordinator for Oxbridge Study Abroad Programs in New York City, NY  
Senior Video Producer at The Arizona Republic in Phoenix, AZ  
Sales Management Associate at PepsiCo Inc. in Portland, OR  
Project Engineer at JE Dunn Construction in Tampa, FL  
Leadership Consultant at Sigma Kappa Sorority in Carmel, IN  
Landscape Designer at Waibel & Associates Landscape Architecture, LLC in Tempe, AZ  
Reporter at Colorado Springs Independent in Colorado Springs, CO  
Assistant Language Teacher at Himeji Department of Education in Himeji, Japan  
Asset Manager at The Boeing Company in Mesa, AZ  
Copyright & Content Developer at BigFish Creative Group in Scottsdale, AZ  
Management Consultant at PricewaterhouseCoopers in San Francisco, CA  
Software Engineer at Raytheon in El Segundo, CA  
Investment Banking Analyst at Goldman Sachs in Salt Lake City, UT  
Supply Chain Analyst at Frito-Lay in Dallas, TX  
Software Engineer at American Express in Phoenix, AZ  
Math Teacher at Cesar Chavez High School in Laveen, AZ  
Financial Analyst at Aetna in Hartford, CT  
Account Manager at Procter & Gamble in Los Angeles, CA

# People

## Cultural and Geographic Diversity





# Price

Net Price Calculator/FAFSA Estimator

FAFSA: October 1 of Senior Year

CSS Profile



## 2016-2017 Confirmation Page



Your confirmation page has been sent to you at the e-mail address: abc@fsa.gov

[PRINT THIS PAGE](#)

**Confirmation Number:** F 08100051803 11/16/2015 16:22:09

**Data Release Number (DRN):** 3007

**Congratulations, Dependent !** Your FAFSA was successfully submitted to Federal Student Aid.



**Does your brother or sister need to complete a FAFSA?** If so, you can [transfer your parents' information into a new FAFSA](#) for your brother or sister to save time. Your parents will have to provide a signature again, but that's all.



### What Happens Next

- You will receive an e-mail version of this page.
- In 3-5 business days, you will receive an e-mail notifying you that your FAFSA was processed.
- Your FAFSA information will be made available to your school(s), and they will use it to determine the aid you may be eligible to receive.
- Your school(s) will contact you if they need more information or when they are ready to discuss your financial aid award.
- If you have questions about your financial aid package, contact your school(s).

School(s) on your FAFSA:

School Name	<a href="#">Graduation Rate</a>	<a href="#">Retention Rate</a>	<a href="#">Transfer Rate</a>	Additional Information from <a href="#">College Navigator</a>
UNIV OF ILLINOIS AT CHICAGO	60%	80%	NA	NA
ALABAMA AGRICULT & MECHAN UNIV	35%	66%	NA	NA
UNIVERSITY OF IOWA	70%	86%	24%	NA
UNIV OF ILLINOIS @ URBANA-CHAMPAIGN	84%	93%	NA	NA



### Eligibility Information

**Estimated Expected Family Contribution (EFC)** = 002516

The EFC is a measure of how much you can contribute to the cost of your education. Schools use your EFC to determine your federal student aid eligibility.

The EFC is not how much aid you will receive or how much

Based on the [eligibility criteria](#), you may be eligible for the following:

[Pell Grant](#) Estimate - \$3,225.00

[Direct Stafford Loan](#) Estimate - \$5,500.00

You may also be eligible to receive other federal, state, or institutional grants, scholarships, and/or



# Merit Scholarships

대체적으로 경쟁력이 있는  
학교들에서는 적합한 학생들에게  
merit scholarships 을 주고 있습니다.  
(GPA and test score).

상위 선택된 학교들에서는 FAFSA와 CSS 프로파일 100% 근거를 바탕으로 특별한 부분의 장학금만을 제공하고 있습니다.

[illegible]

# Financial Aid Package의 예

Drake University

Office of Student Financial Planning

Your Financial Aid Awards

Student Name  
Student ID#

December 3, 2018  
Student Copy

Below please find your financial aid awards for the 2018-19 academic year. **PLEASE REVIEW AND COMPLETE BOTH SIDES OF THIS AWARD NOTICE AND SIGN AND RETURN A COPY TO THE OFFICE OF STUDENT FINANCIAL PLANNING. IN ADDITION, BE CERTAIN THAT YOU READ AND RESPOND ACCORDINGLY TO ALL AWARD INSTRUCTIONS AND ACTIONS REQUESTED.**

**Step 1. Your Awards:** Please read messages below as indicated (several awards cannot be processed without additional action). Circle Accept or Decline ONLY where this message exists. Please read the instructions for any award marked by asterisk (\*, \*\*, \*\*\*, etc.) and complete all the steps as outlined in these instructions. For revisions following your initial award notice, the first message in Step 2 will indicate the basis for the revision.

Award Description	Summer 2018	Fall 2018	Spring 2019	Total	Messages/Action
Presidential Scholar (Tuition)		10,500.00	10,500.00	\$21,000.00	Accept/Decline
Trustee Scholarship (Tuition)		1,500.00	1,500.00	\$3,000.00	Accept/Decline
Fine Arts Scholarship Music		4,500.00	4,500.00	\$9,000.00	Accept/Decline
<b>TOTAL GRANTS AND SCHOLARSHIPS</b>				<b>\$33,000.00</b>	
Federal Direct Unsubsidized Ln		2,750.00	2,750.00	\$5,500.00	See **
<b>TOTAL FEDERAL STUDENT LOANS</b>				<b>\$5,500.00</b>	
Federal PLUS or Private Loan		7,655.00	7,655.00	\$15,310.00	See ***
<b>TOTAL OTHER LOAN ELIGIBILITY</b>				<b>\$15,310.00</b>	

# Graduating with Loans

## 론을 갖고 졸업하기



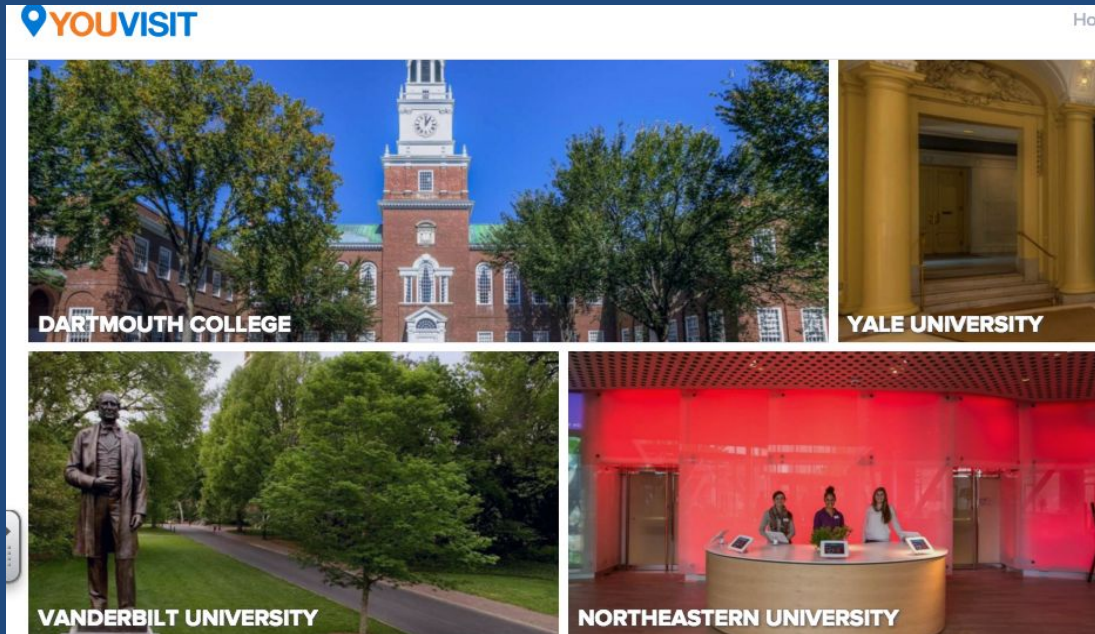


# Visiting College Campuses

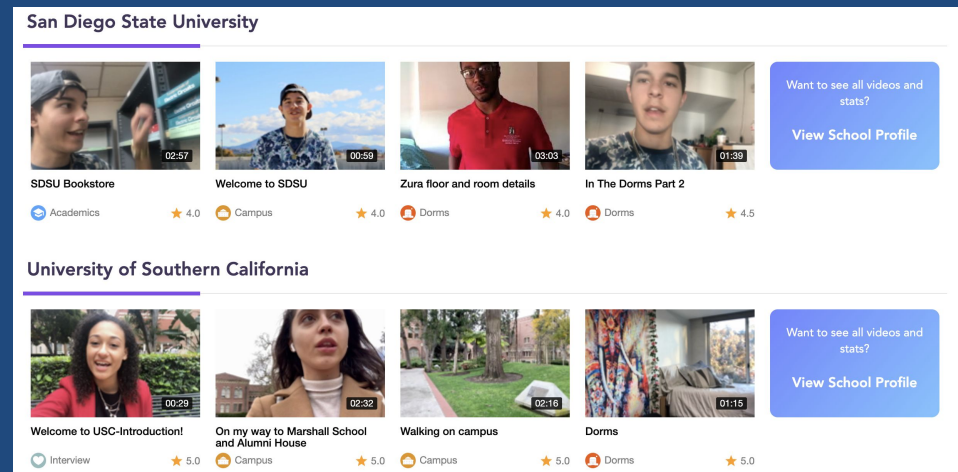
## 대학교 방문



# Virtual Tours-가상 투어



- college admissions websites
- youvisit.com
- campusreels.org



# Campus Visit – Getting Started

## 캠퍼스 방문 시작하기

- **Large public** 대규모 공립학교– University of Illinois, Northern Illinois
- **Small private** 소규모 사립학교– Lake Forest College, North Central College
- **Urban Setting** 대도시 근교– University of Illinois at Chicago, DePaul University
- **Midsize Suburban** 중간규모 외곽– Northwestern University, Bradley University





# Campus Visits- 캠퍼스 방문

## Why? 왜?

- Campus style
- Student body
- Academics
- Social life

## When? 언제?

- During the school year
- Campus visit program days
- Spring Break or Summer



**CAMPUS VISIT**

# Campus Visits- 캠퍼스 방문

## Who? 누구?

- Visit the Admission, Financial Aid and Placement offices
- Visit classes
- Speak to students other than the tour guide

## What? 무엇을?

- Facilities
- Dorm rooms
- Community
- Campus literature
- Transportation



# Special Visit Days and Special Virtual Info Sessions



## VISIT PROGRAMS

With the fall semester in full swing, students have multiple opportunities to come see SLU for themselves!

### Preview Days

**Oct. 6, Oct. 14 and Nov. 11**

This event gives students the opportunity to introduce themselves to faculty, staff and current students. It also includes:

- Presentations on the application and admission process and financial aid
- Panel discussion with current students
- Academic and information fair
- One-on-one with admission counselor
- Special presentation about studying Pre-Medicine at SLU
- Walking tour and a tour of our residence halls

*Special business, engineering and aviation options are available on Oct. 6 Preview Day.*

[Apply](#)  
[Visit](#)  
[Majors](#)  
[SLU.edu](#)

## DATES AND DEADLINES



Deadline for the [Presidential Scholarship](#) is **Dec.1.**



Deadline for the [Martin Luther King Jr. Scholarship](#) is **Feb.1.**



Many honors and scholars



Narrow Your Search-  
지원 학교 리스트를 좁혀  
가십시오



# Application Management- 입학지원서 관리

[illegible]

# Start Early- 조기 시작

High School Outcomes

Alumni Outcomes

YTD results

84%

Class Year

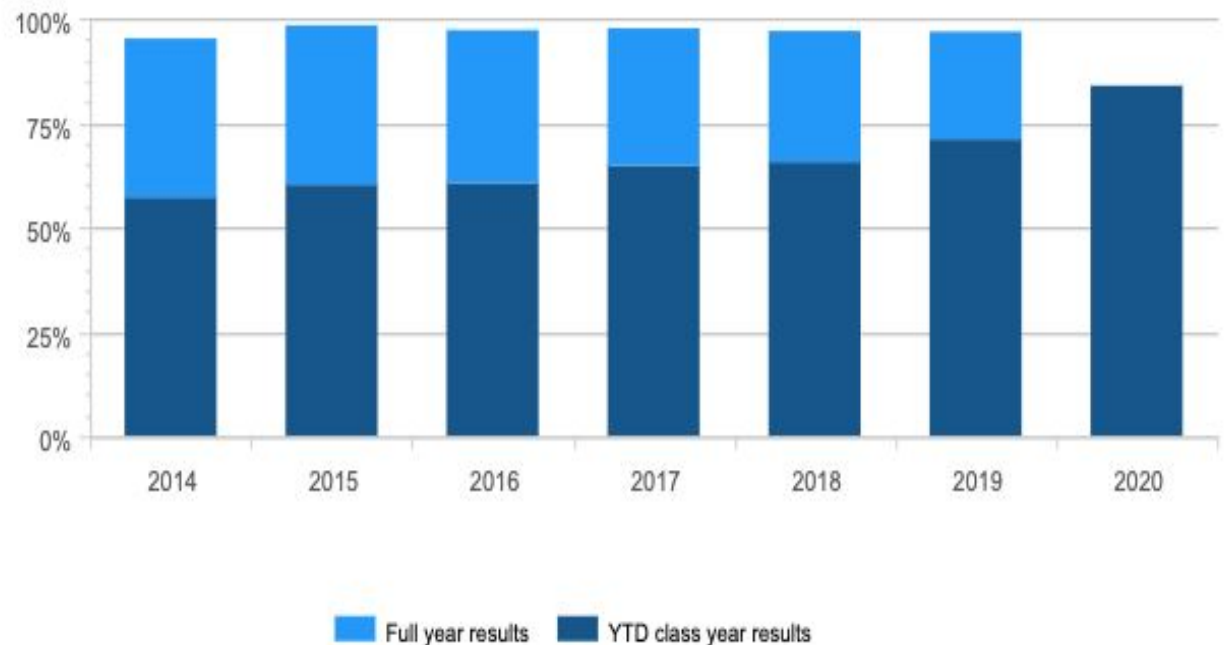
2020

Applied to 1+



 Analysis

Applied to at least 1 college





# Communicate- 소통하기



