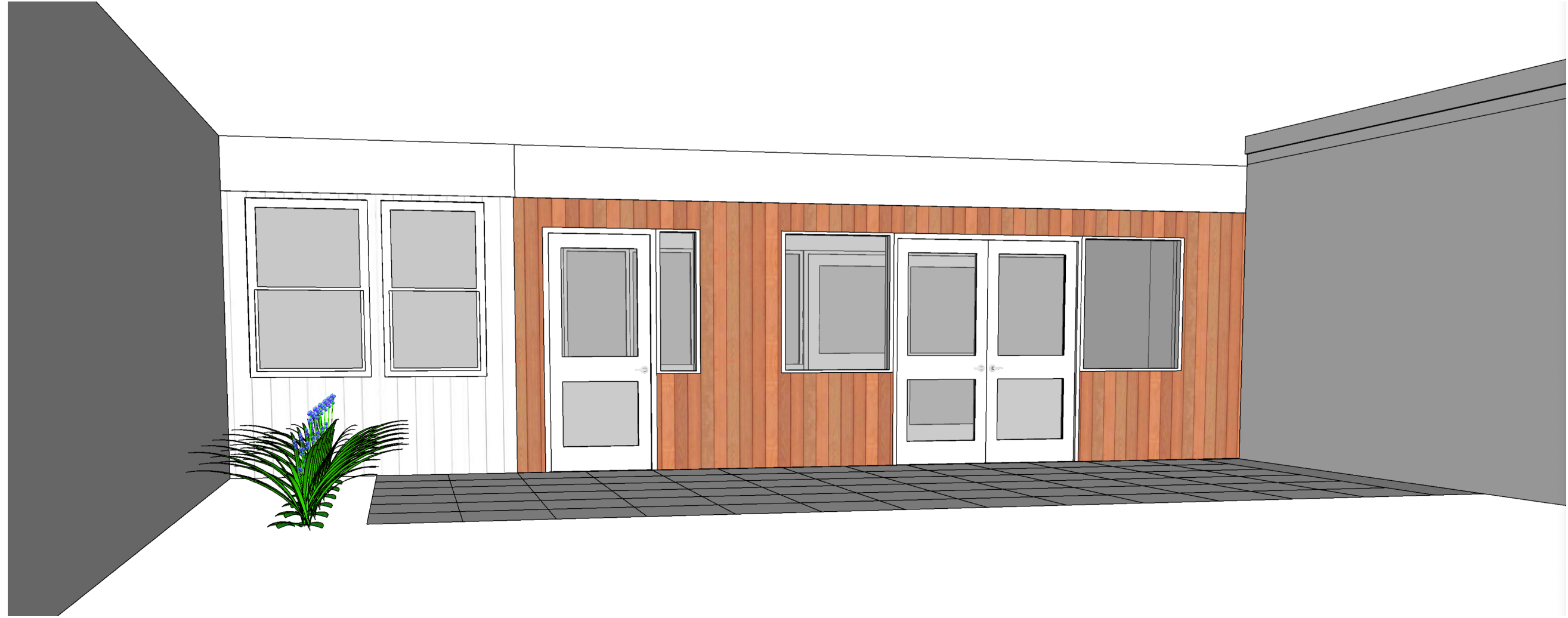
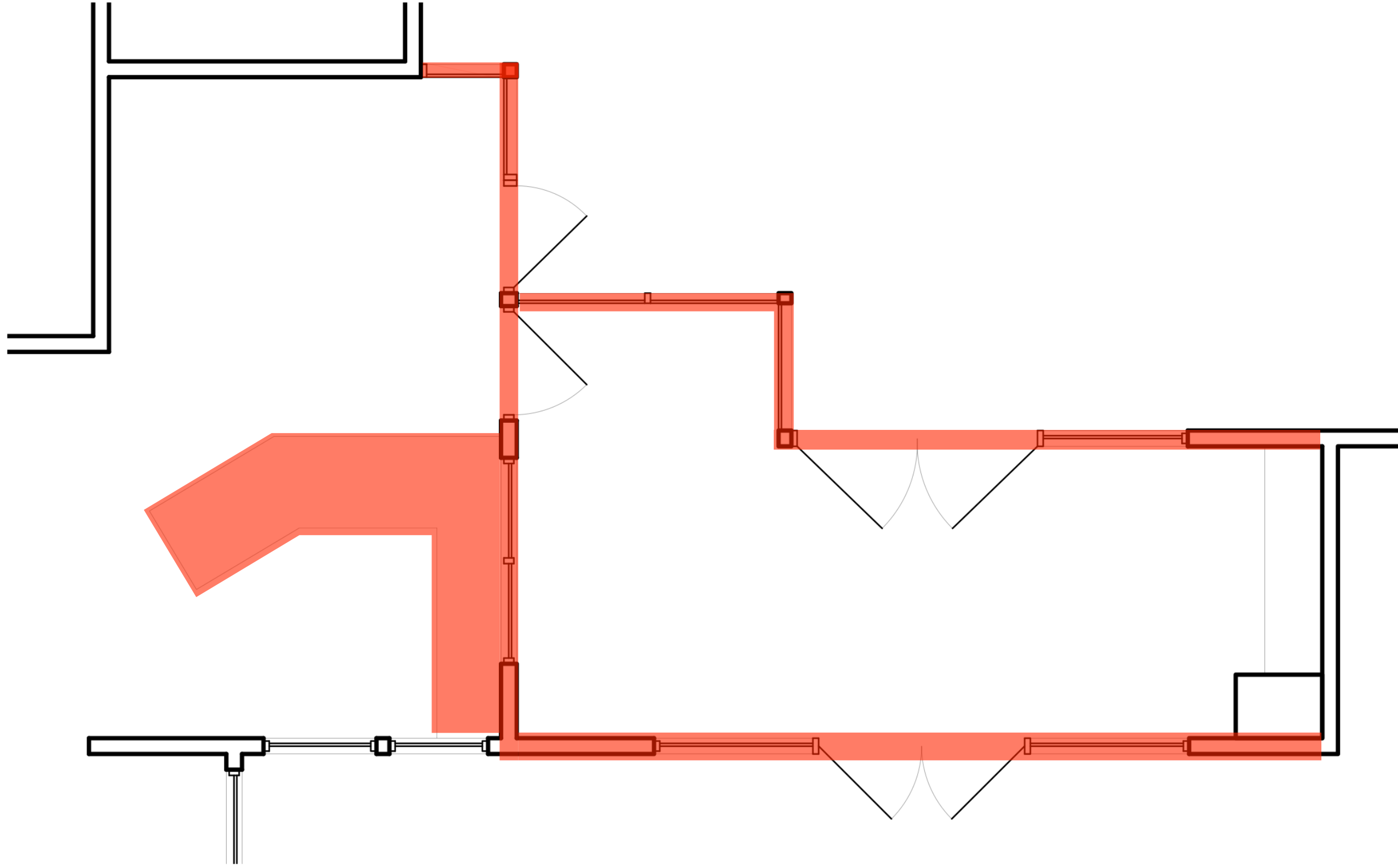


Ray School Entry Renovation Pricing Set September 19, 2022





1 - Demo Plan
NOT TO SCALE

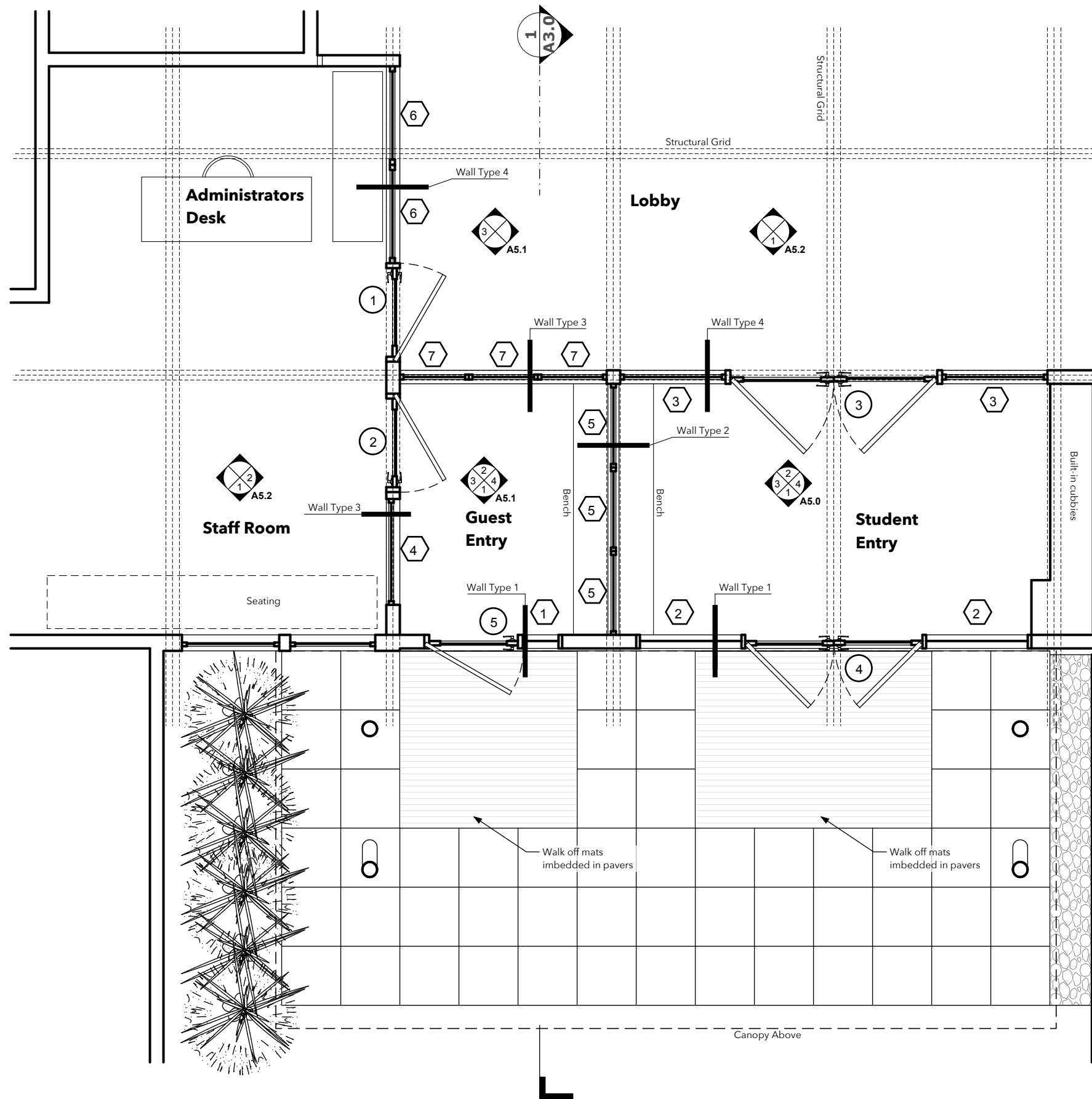
PRICING SET
DEMO PLAN
09.19.2022

A1.0

Bernice A. Ray School SAU 70
26 Reservoir Road
Hanover, NH 03755



WATERSHED STUDIO
architecture, LLC



Wall Type 1 (Exterior)

- Insulated
- Bullet Resistant

Wall Type 2 (Entry divider with bench)

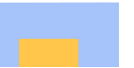
- Bullet Resistant
- Not Insulated
- Built in Bench

Wall Type 3 (Interior)

- Bullet Resistant
- Not Insulated

Wall Type 4 (Interior)

- Not Bullet Resistant
- Not Insulated

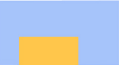


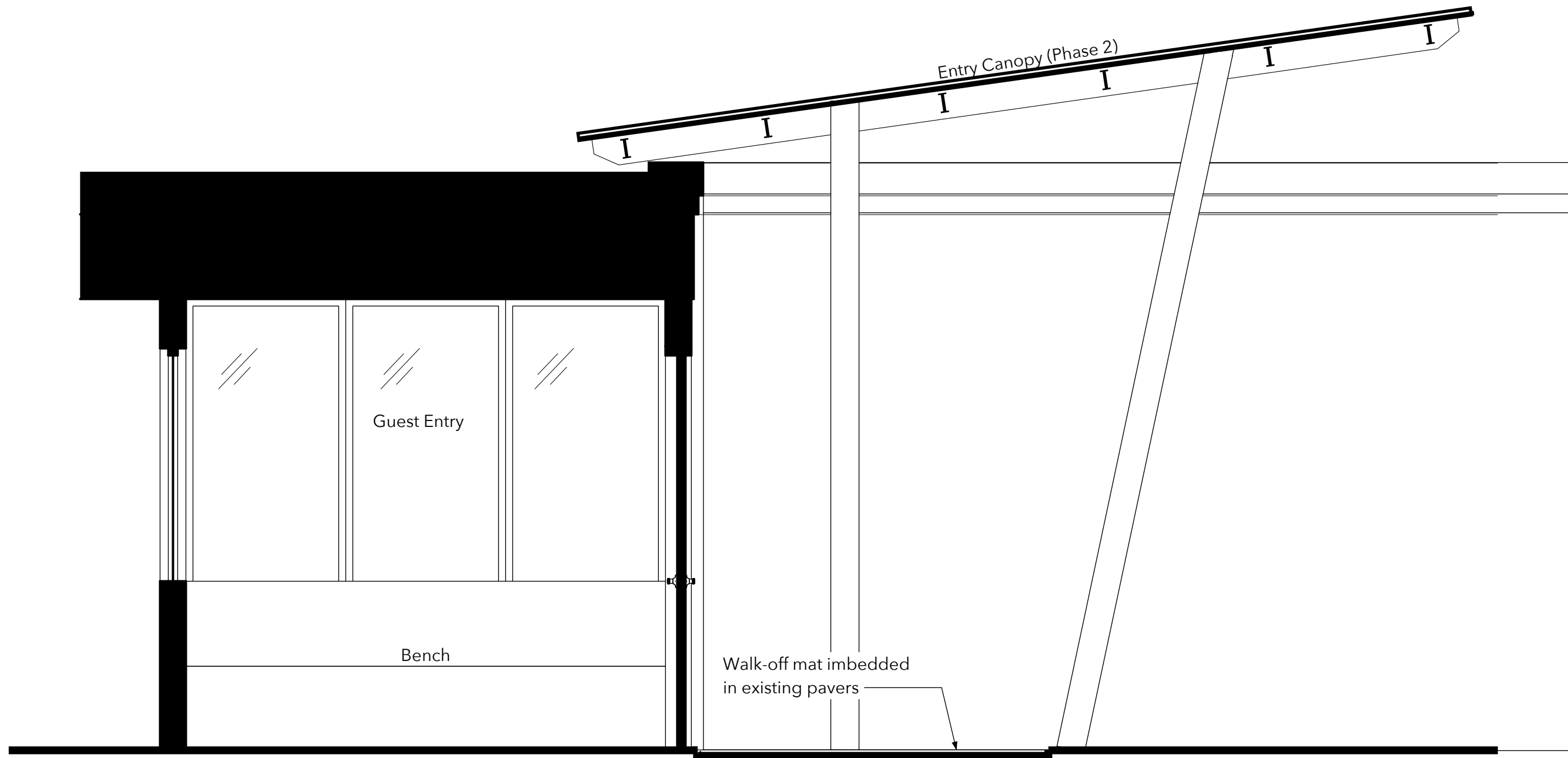


1 - Exterior Elevation Of Entry

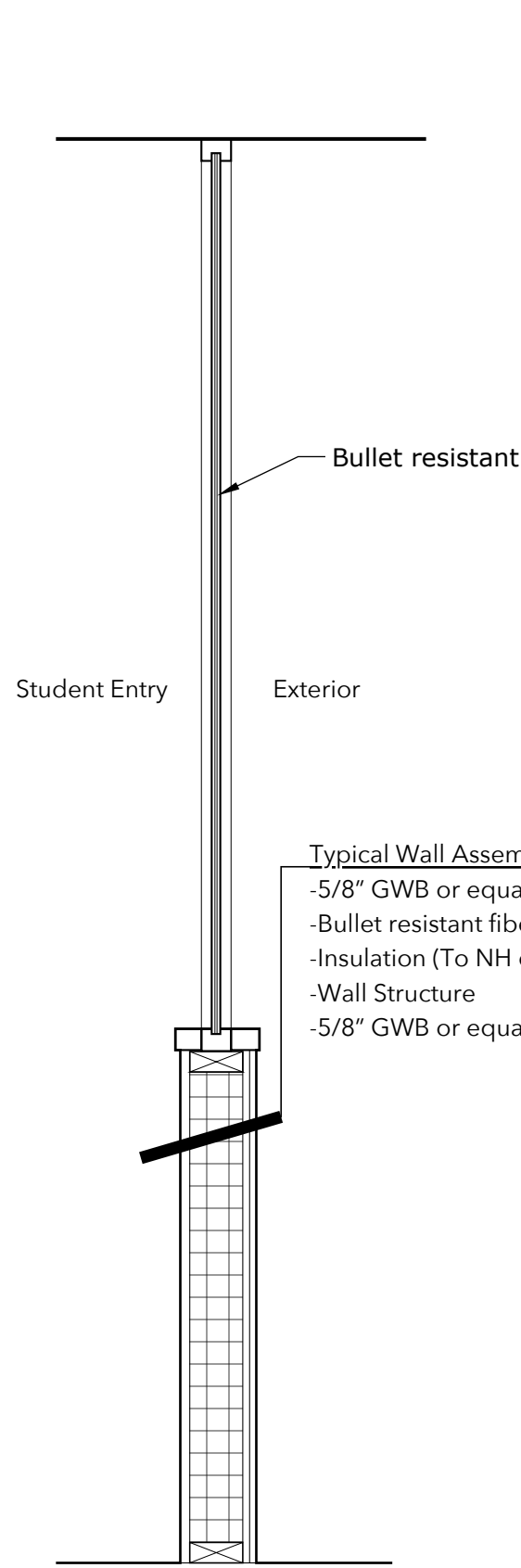


2 - Exterior Perspective W/ Proposed Canopy



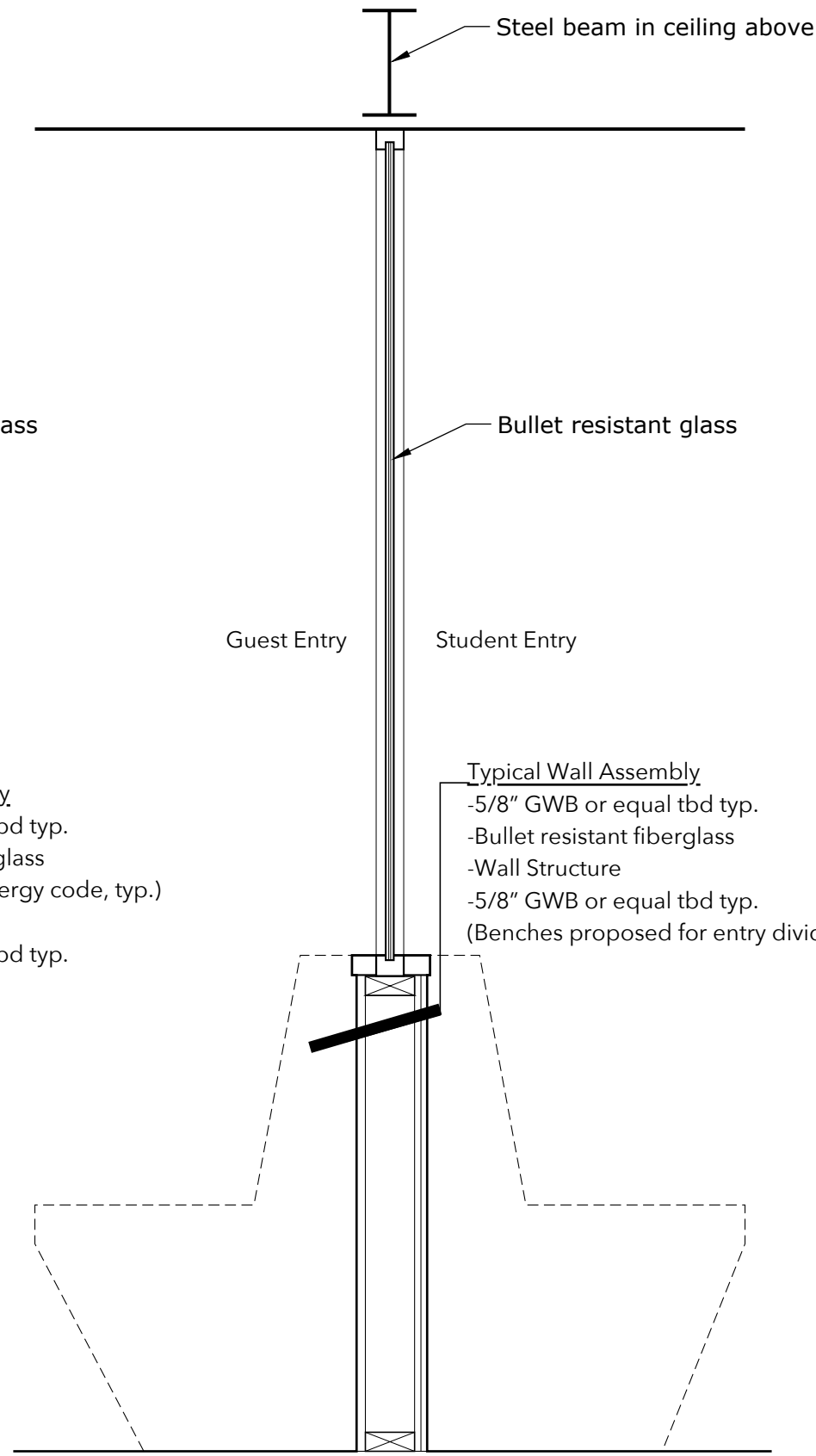


1 - Section
 1/2" = 1'-0"



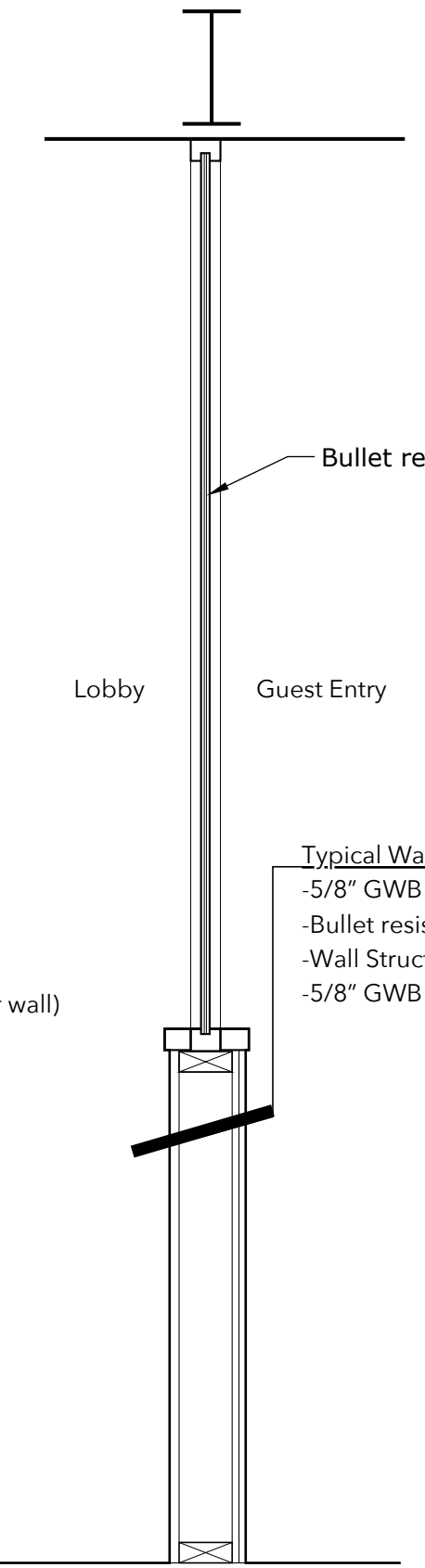
Typical Wall Assembly
 -5/8" GWB or equal tbd typ.
 -Bullet resistant fiberglass
 -Insulation (To NH energy code, typ.)
 -Wall Structure
 -5/8" GWB or equal tbd typ.

1 - Type 1 Wall Section
 1"=1'-0"



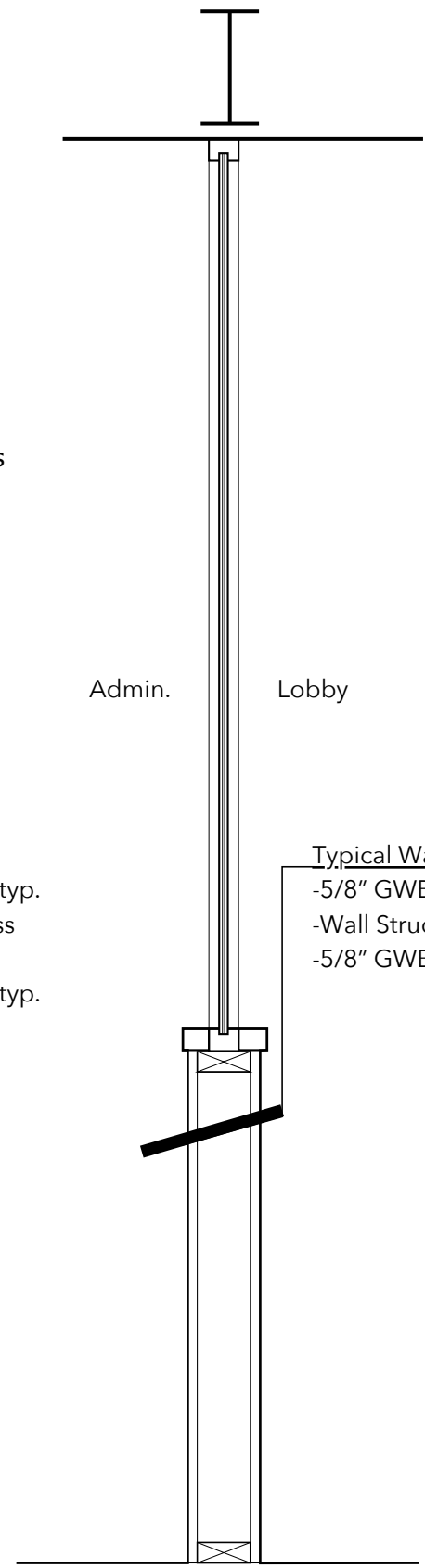
Typical Wall Assembly
 -5/8" GWB or equal tbd typ.
 -Bullet resistant fiberglass
 -Wall Structure
 -5/8" GWB or equal tbd typ.
 (Benches proposed for entry divider wall)

2 - Type 2 Wall Section
 1"=1'-0"



Typical Wall Assembly
 -5/8" GWB or equal tbd typ.
 -Bullet resistant fiberglass
 -Wall Structure
 -5/8" GWB or equal tbd typ.

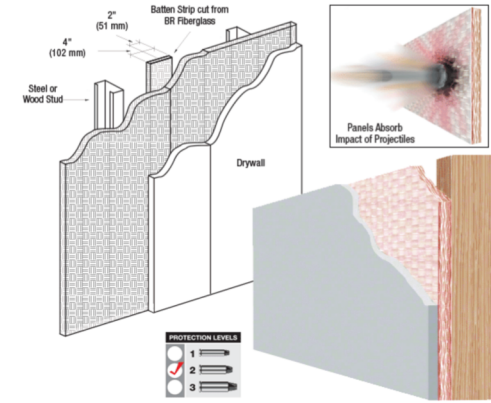
3 - Type 3 Wall Section
 1"=1'-0"



Typical Wall Assembly
 -5/8" GWB or equal tbd typ.
 -Wall Structure
 -5/8" GWB or equal tbd typ.

4 - Type 4 Wall Section
 1"=1'-0"

CRL Bullet Resistant 3/8" Thick Fiberglass Panel Protection Level 2 H.P.S.A.



UL 752 RATING / WEAPON	AMMUNITION	SHOT
LEVEL 1 9mm Pistol	9mm full metal copper jacket with lead core	3
LEVEL 2 .357 Magnum	.357 Magnum jacketed lead soft point	3
LEVEL 3 .44 Magnum	.44 Magnum lead semi-wadcutter gas checked	3
LEVEL 4 .3-06 Hunting Rifle	.3-06 caliber rifle lead core soft point	1
LEVEL 5 AK-47 Assault Rifle	7.62mm rifle lead core full metal copper jacket military ball	1
LEVEL 6 Uzi Submachine Gun	9mm full metal copper jacket with lead core	5
LEVEL 7 M16 Assault Rifle	5.56mm rifle full metal copper jacket with lead core	5
LEVEL 8 AK-47 Assault Rifle	7.62mm rifle lead core full metal copper jacket military ball	5

UL752 Bullet Resistant Wall Panel

Our UL 752 bullet resistant wall paneling allows for every building or home to have a safe area. This cost effective, non-intrusive system can be used to create a safe haven in your home, office, school, etc. for everything from an invasion, storage of valuables, to natural disasters.

Performance Advantages

- Military grade protection
- Durability
- Corrosion Resistance
- Electrical non-conductivity
- Low thermal conductivity
- Less than 25% the weight of steel paneling

Material

Nominal Thickness: 3/8" (UL3)
 Nominal Weight: 5.5 lbs per square foot
 Size: 4' x 8'
 Fiberglass and resin mix to meet or exceed UL 752 standards for bullet resistant wall panels in each of the UL levels.

Pair with our UL 752 Bullet Resistant Batten Strips for seamless bullet protection: [Click Here](#)

Uses

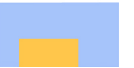
Commercial, Residential, Government, Military, Banks, Credit Unions, Retail, Check Cashing, Prisons, Courthouses, Dispensaries, Police Stations, Safe Rooms, Schools, Public Safety Facilities, & Stadiums.

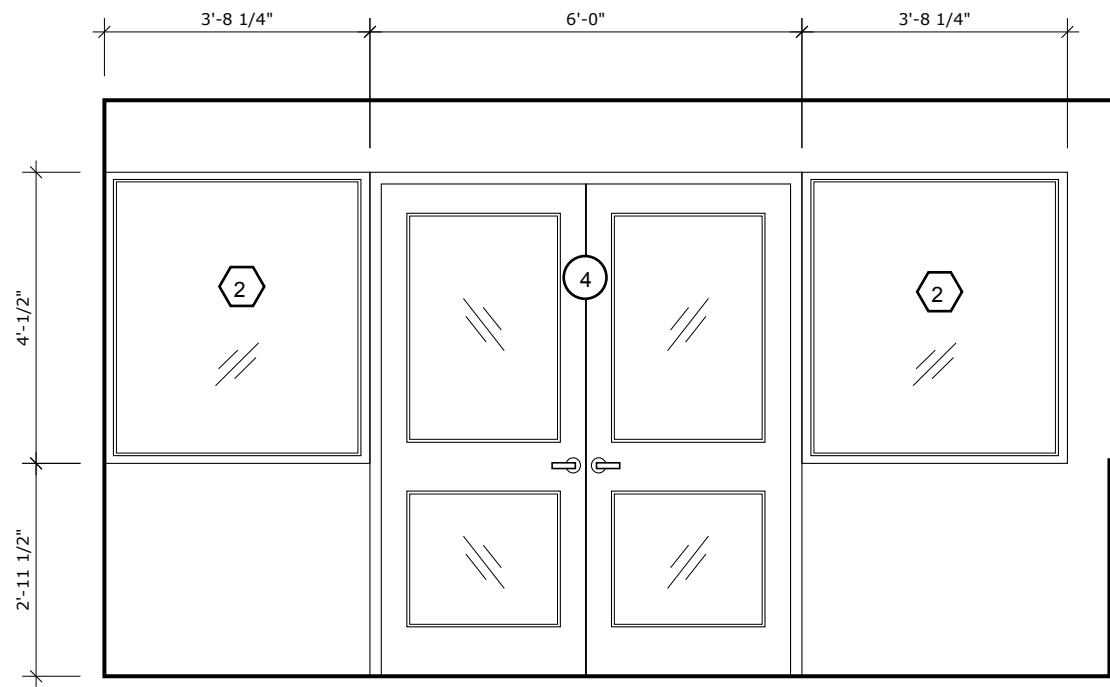
Cut-to-Size

Simple rectangular cuts are an additional \$50 per panel. Custom cutting available for interior, radius, and other non-square cutting. Please email to inquire.

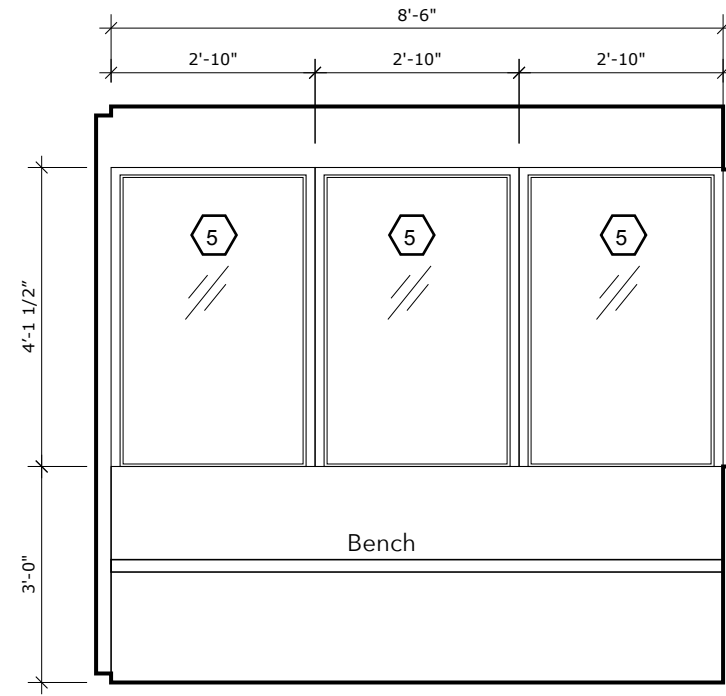
Finish Schedule

	Student Entry	Guest Entry	Administration	Lobby
Wall 1	Wall type 1, painted drywall	Wall type 1, painted drywall	Existing wall and windows, painted drywall	Wall types 3 and 4, painted drywall
Wall 2	Wall type 4, painted drywall	Wall type 3, painted drywall	Wall type 3, painted drywall	
Wall 3	Wall type 2, wooden benches	Wall type 3, painted drywall		Wall type 4, painted drywall
Wall 4	Cubbies and list and found hanging and storage	Wall type 2, wooden benches		
Floor	Remove walk-off mat and replace with walk off washable rug	Washable Walk-off mat	Patch existing flooring as needed under existing built in desk (to be removed)	
Ceiling	Replace hung ceiling	Replace hung ceiling	Patch and repair existing hung ceiling as necessitated by construction of new walls	Patch and repair existing hung ceiling as necessitated by construction of new walls

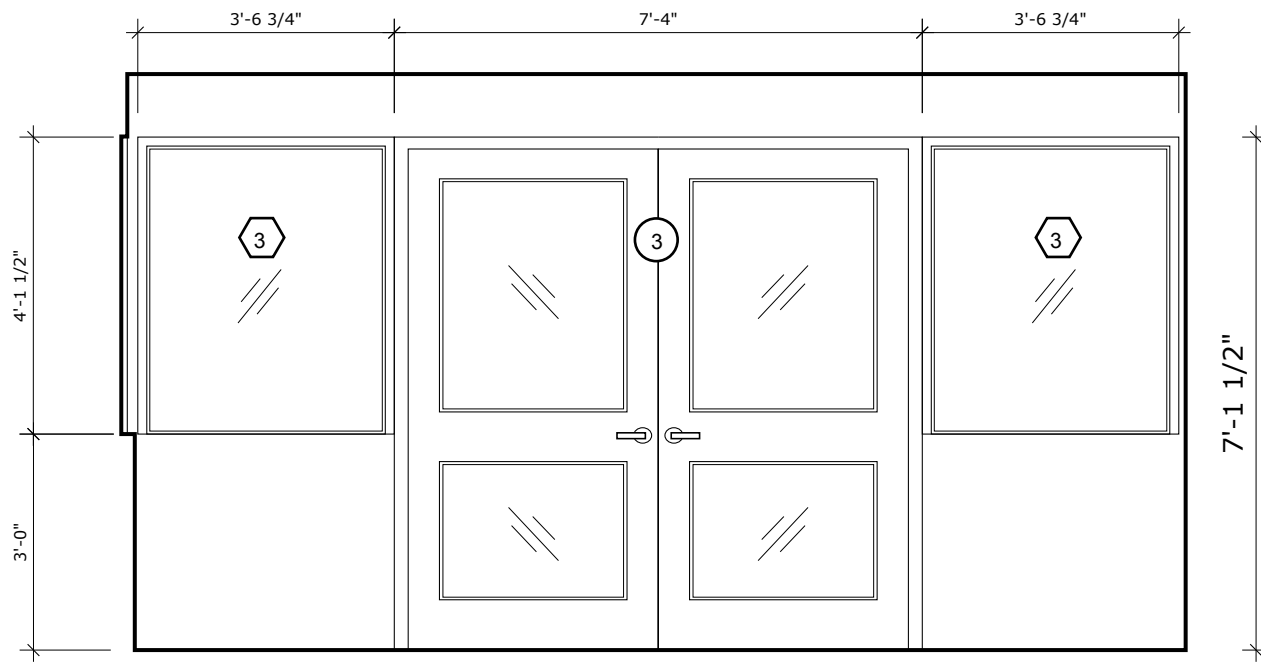




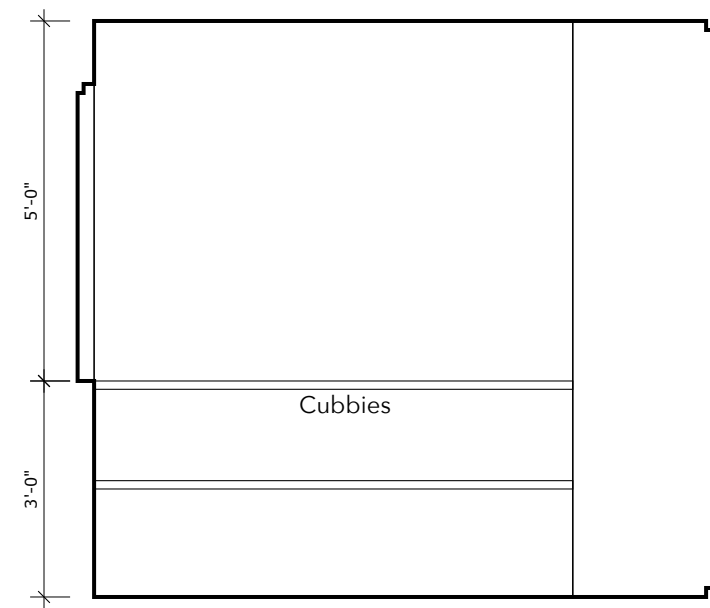
1 - Student Entry Int. Elevation



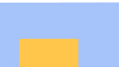
3 - Student Entry Int. Elevation

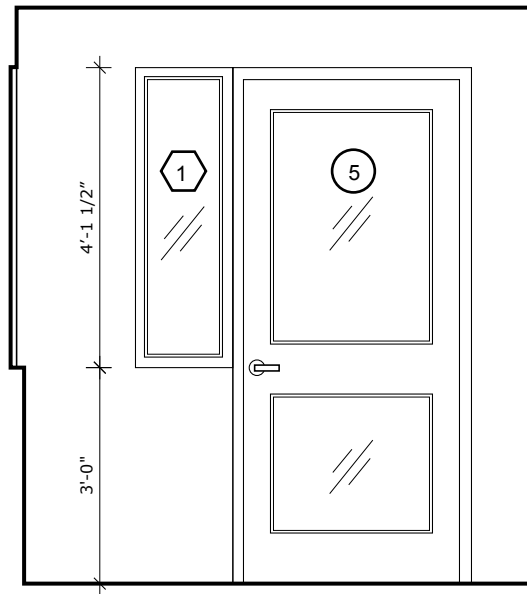


2 - Student Entry Int. Elevation

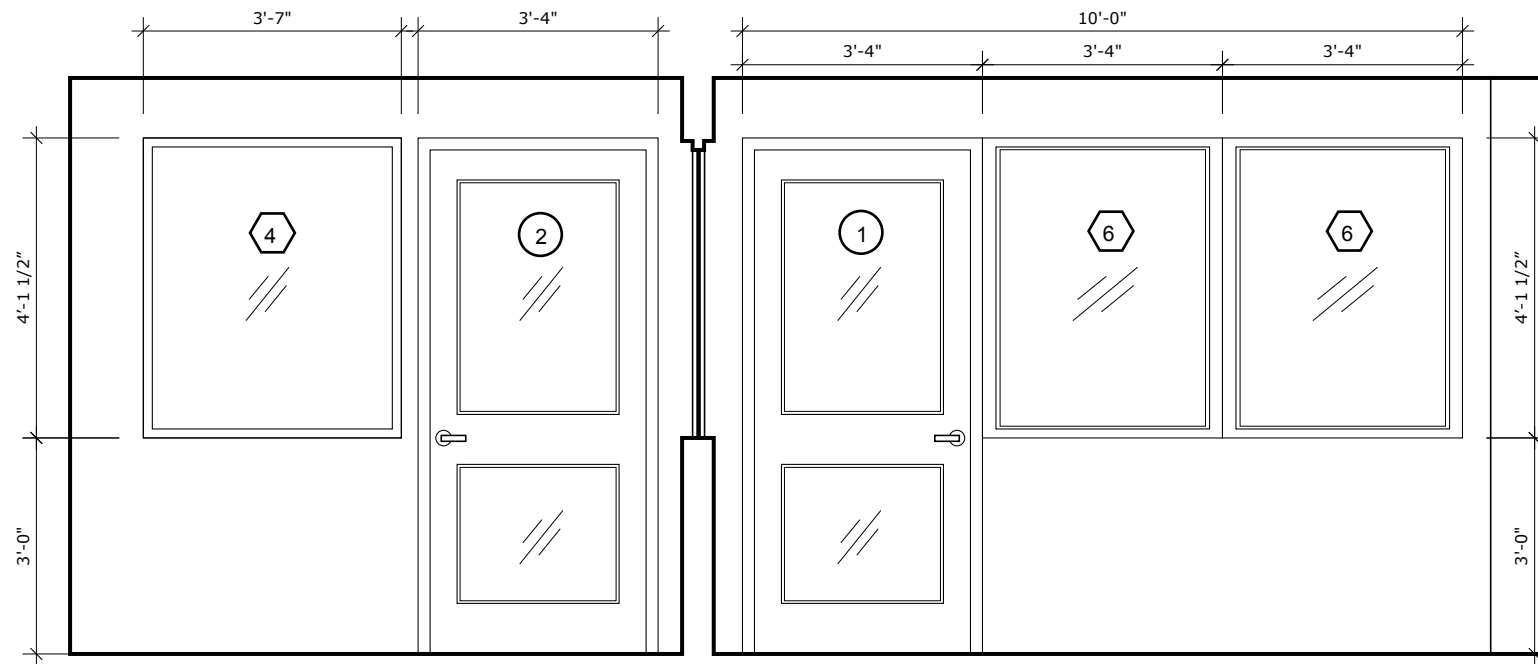


4 - Student Entry Int. Elevation



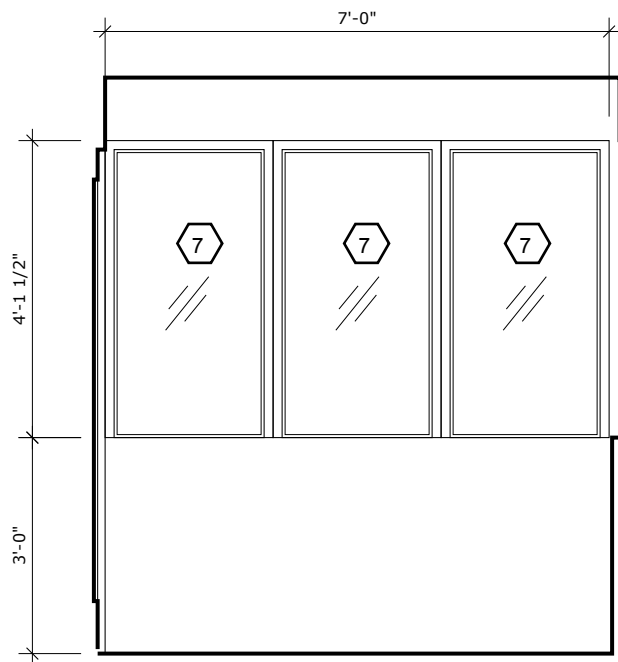


1 - Guest Entry Int. Elevation

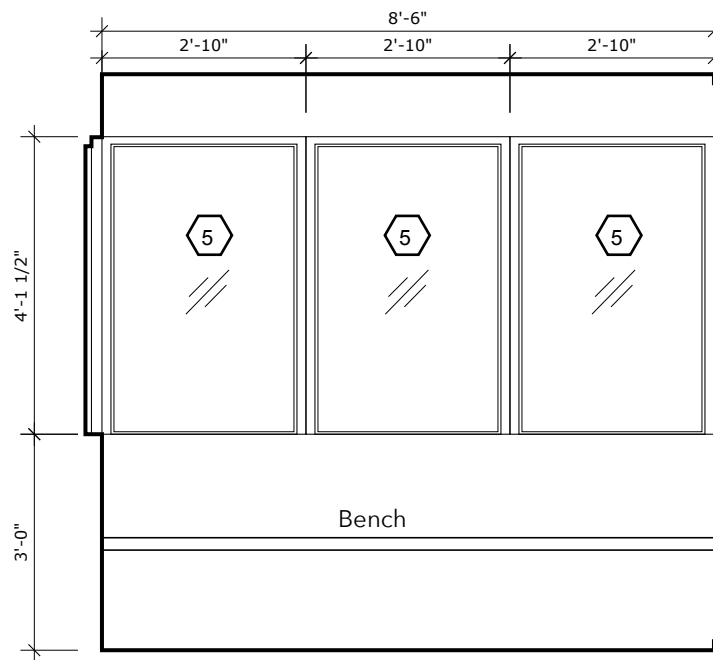


3 - Guest Entry Int. Elevation

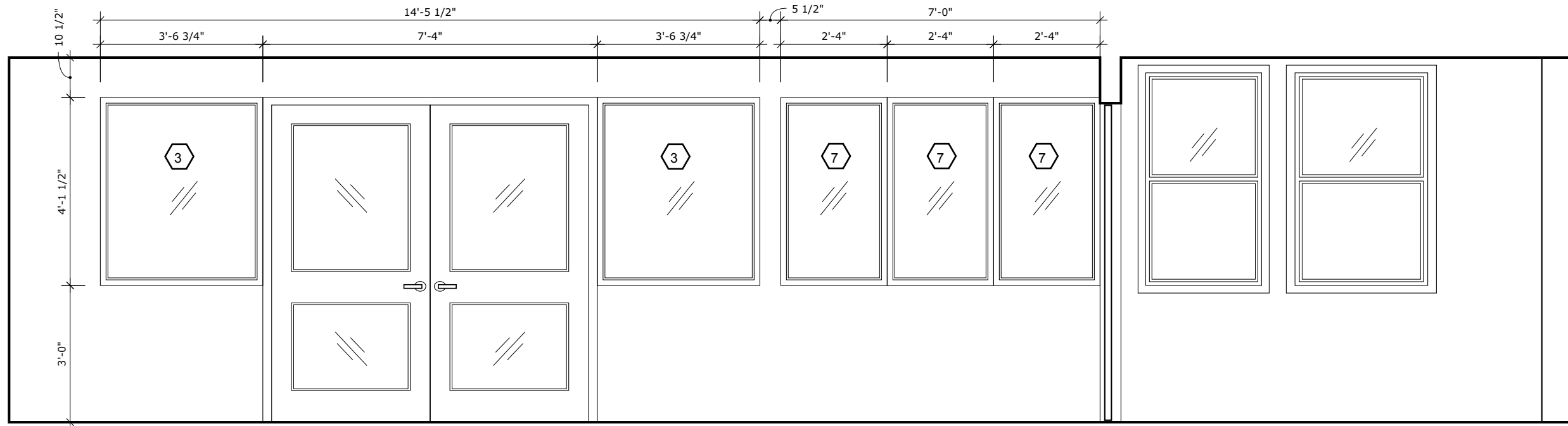
Staff Room Entry Elevation



2 - Guest Entry Int. Elevation



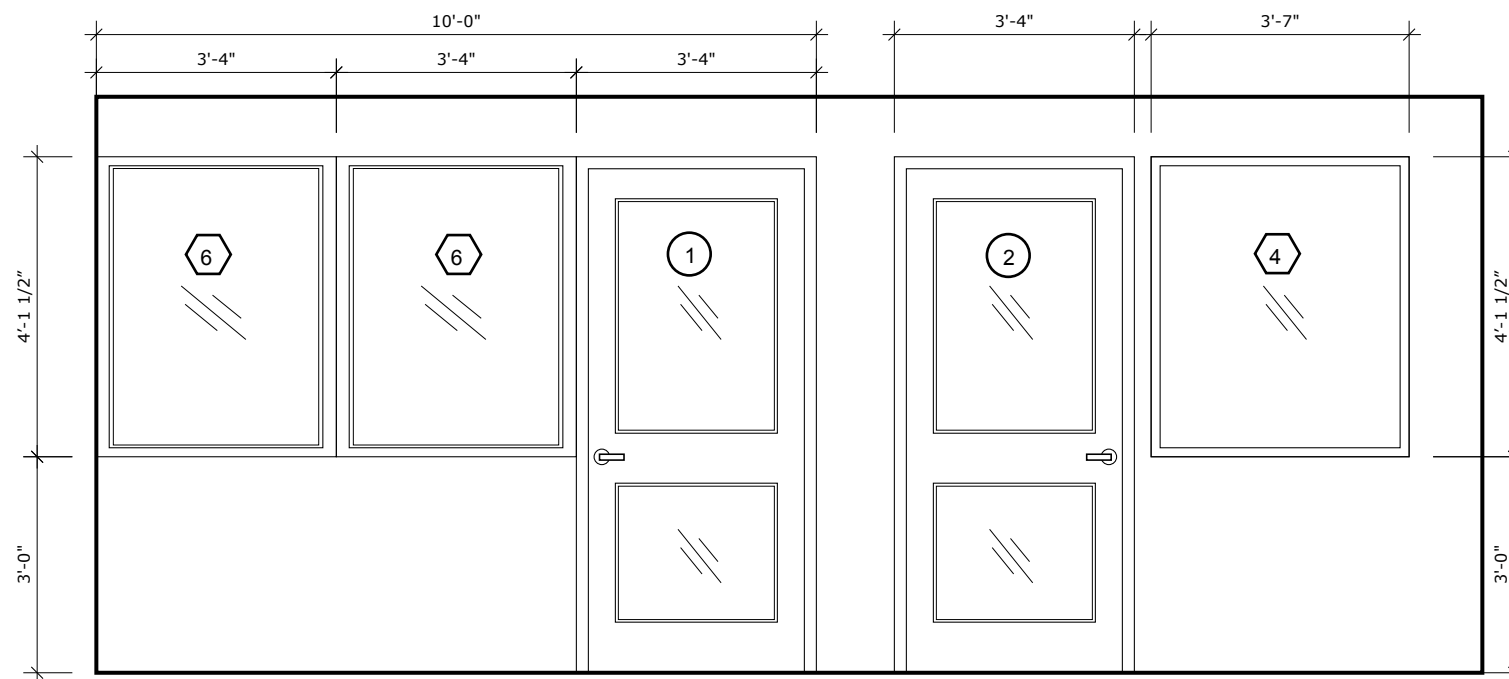
4 - Guest Entry Int. Elevation



1 -

Student Entry

Staff Room



2 - Admin Desk Area

Staff Room Seating Area

Window Schedule

<p>Quantity: 1 Bullet Resistant Insulated</p>	<p>Quantity: 2 Bullet Resistant Insulated</p>	<p>Quantity: 2</p>	<p>Quantity: 1 Existing? Fire Resistant Bullet Resistant</p>
<p>Quantity: 3 Bullet Resistant</p>	<p>Quantity: 2 Fire Resistant</p>	<p>Quantity: 3 Bullet Resistant</p>	

Door Schedule

<p>Quantity: 1 Glass: Reuse Frame and Door: Reuse</p>	<p>Quantity: 1 Glass: New Bullet Resistant Glass Frame and Door: Reuse Fire Resistant</p>	<p>Quantity: 1</p>	<p>Quantity: 1 Bullet Resistant Insulated</p>	<p>Quantity: 1 Bullet Resistant Insulated</p>

