

*Celebrating
138 Years
of
Catholic
Education*



2021 - 2022 School Calendar

2020 - 2021 Annual Report

• Moving Forward as One...

As we begin the 2021-22 school year, we do so as a community with refreshed hope, encouraged by exciting opportunities for growth. Embracing our potential will be key to a successful year. In an ever-changing world, Newman Catholic Schools continues to move forward in faith, providing students opportunities to succeed academically and deepen their relationship with Jesus Christ.

Newman Catholic Schools will keep the mission in our hearts as we look to the future and allow the comprehensive strategic plan to guide us on this journey. Thanks to the efforts of dedicated stakeholders, the strategic plan was created to address key areas of need and to offer a foundation for change. Fulfilling our goals is more easily accomplished when they are clear and attainable. For the first time in a long time, it truly feels like we are in a position to make proactive decisions based on a solid plan.

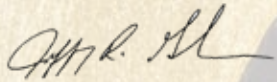
Our faculty, staff and students have just come out of a difficult year having to face many challenges, both personally and within the schools. We are looking forward to a year of renewed positivity. A year in which the focus can be placed fully on strengthening our faith and community with a renewed emphasis on delivering academic excellence. We congratulate our students, faculty and staff on tackling every obstacle they faced during the 2020-2021 school year. They did so with grace.

We are also looking forward to getting our volunteers and alumni back into our schools. One of the greatest losses this past year was the loss of community. Being able to welcome guests back to Mass, to help in our schools, and for all of us to enjoy an event or to cheer on our athletes is truly a blessing. A goal for this year is to strengthen our community and embrace our history as we connect our past with the present.

2021-22 brings continued opportunity to make technological improvements throughout the system. Though inventory and shipping shortages have slowed completion of the project, the system continues to take steps toward completion of the Chromebook Initiative. Each day we move a little bit closer to supplying each student with a Chromebook assigned to them and adding access points within buildings to increase connection speed and reliability. When complete, students will benefit from more cutting edge instruction.

As Newman Catholic Schools looks to the future we do so with a focus on continuous improvement and positive engagement. We will keep Christ in our hearts as we move together with renewed dedication to our Catholic beliefs. Together we can make this the best year yet!

May God bless you and your family,



Jeff Gulan, NCS President



Mission Statement

Newman Catholic Schools promotes Catholic faith, service and academic excellence to cultivate a deep relationship with Jesus Christ and to become lifelong learners and disciples.

• 70th Anniversary - Newman High Schools' First Class - September 1951



It has been 70 years since the high schools' "Pioneers" stepped foot in a classroom at St. Mary School to take the first ever course offered at Newman High School. Until that time, Catholic education had been offered in Wausau through eighth grade, forcing students to move to the public high school. Were it not for the Catholic community at the time believing strongly in the need for educational opportunities to extend through graduation, Newman Catholic Schools would not be here today.

Bishop John P. Treacy established Newman High School on February 6, 1951. A decision made in response to the need for a Catholic secondary school in the Wausau area. Newman High School's first 78 students, the Pioneers, attended classes within two rooms at St. Mary School, but with each new school year the number of students grew and the need for additional space became a concern. The first solution, expand to use available space within St. James School. Unfortunately that was only a temporary solution. If Newman High School was to grow even stronger, construction of a standalone building was necessary. Local leaders developed plans to build a separate Newman High School at the Bridge Street location in which it stands today.

A fund drive, led by Fr. Lloyd Geissler and run by local parishes, kicked off in 1954 with a goal of raising the capital needed to commence construction. Thanks to a successful campaign, ground breaking for the new building took place on December 12, 1954 with the cornerstone being laid by Bishop Treacy on October 16, 1955. In the fall of 1956, the first 400 students stepped through the doors to attend class in the newly finished Newman High School. 70 years later, over 6,000 students have taken their place as part of a distinguished group of individuals, Newman Catholic Alumni.

Newman Catholic Schools will forever be grateful to its Pioneers. No matter how many years have passed or how many changes the system has embraced, one thing unifies all students... We Are One...We Are Newman!



• 2021 NCHS Senior Graduates

Dylan G. Ackermann - High Honors, Loras College, Dubuque, IA
Dane D. Barnes - Northcentral Technical College
Dylan J. Benaszkeski - Northcentral Technical College
Nicholas R. Brenner - Valedictorian, Highest Honors, Butler University, Indianapolis, IN
Ashton M. Butts - Gap Year
Anna K. Cicha - Honors, University of Wisconsin - Green Bay
Angela R. Donath - High Honors, Beloit College
Sophia E. Gasper - Honors, University of Wisconsin - Stevens Point
Ruby E. Haupt - Highest Honors, University of St. Thomas, St. Paul, MN
Jonah Hemauer - Gap Year
Annabella R. Hoffer - Honors, University of Wisconsin - Stout
Alyssa R. Kelnhofer - High Honors, University of Wisconsin - Stevens Point
Elizabeth M. Kroening - Highest Honors, University of Wisconsin, Stout
Kyle M. Lang - High Honors, University of Wisconsin - Platteville
Charles H. McCarty - Highest Honors, University of St. Thomas, St. Paul, MN
Bryan B. Miller - Northcentral Technical College
Benjamin D. Noll - Potomac State College, WV
Tegan E. Peters - Highest Honors, Kent State University, OH
Elise M. Raschke - Valedictorian, Highest Honors, Marquette University
Quinn J. Reeves - High Honors, University of Wisconsin - Eau Claire
Taylor J. Repinski - High Honors, Saint Mary's University of Minnesota, MN
Stevie R. Samuels - Valedictorian, Highest Honors, University of Minnesota, Twin Cities, MN
Brennan P. Shaughnessy - Highest Honors, University of Minnesota, Duluth, MN
Grace M. Sukanen - Valedictorian, Highest Honors, University of St. Thomas, St. Paul, MN
Nicholas R. Thums - High Honors, University of Wisconsin - Green Bay
Hong Phat Vo - High Honors, Northcentral Technical College
Gavin R. Wulf - Highest Honors, Saint Louis University, St. Louis, MO



• Under Class Promotions

NCES: St. Anne - Fifth Grade



NCES: St. Mark - Fifth Grade



Newman Catholic Middle School - Eighth Grade



Congratulations to the 5th and 8th grade students upon their promotion. Our prayers are with them as they begin the next path of their Newman journey.

Newman Catholic Schools is proud of the dedication these students have for their education and school.



JULY		AUGUST 2021					SEPTEMBER						
S	M	T	W	T	F	S	S	M	T	W	T	F	S
1	2	3	4	5	6	7	8	9	10	11	12	13	14
15	16	17	18	19	20	21	22	23	24	25	26	27	28
29	30	31											

*Note calendar events are subject to change

• Celebrating Our Students



AUGUST		SEPTEMBER 2021						OCTOBER					
S	M	T	W	T	F	S	S	M	T	W	T	F	S
1	2	3	4	5	6	7	1	2	3	4	5	6	7
8	9	10	11	12	13	14	8	9	10	11	12	13	14
15	16	17	18	19	20	21	15	16	17	18	19	20	21
22	23	24	25	26	27	28	22	23	24	25	26	27	28
29	30	31					29	30	31				
Sunday	Monday	Tuesday	Wednesday	Thursday	Friday	Saturday							
			1	2	3	4							
			First 4K - WSD & DCE Student Day										
5	6	7	8	9	10	11							
	 No School					National ACT Testing							
12	13	14	15	16	17	18							
19	20	21	22	23	24	25							
			First Day of Autumn										
26	27	28	29	30									
			Homecoming										

*Note calendar events are subject to change

• Newman By the Numbers

- National Merit Scholar Winner**
Honor bestowed on 7,500 students from 1.6 million who entered nationwide.
- 16 Scholar Athletes Within the Class of 2021**
- \$650,000 Post Secondary Scholarships Offered to the Class of 2021**
- \$131,000 in Scholarships Awarded to K - 12 Students**
- 100% of NCS Students, K-12 Participated in Service Projects**
- \$700,000 Funds Donated to NCS in Support of Catholic Education**
- 55% of Students Who Took the ACT Scored 21 or Above**
- 50% of Students Who Took an AP Exam Scored 3.0+**
- 100% Graduation Rate From the Class of 2021 - 93% Are Attending Post-Secondary Education**

Hold Your Heads High...

The 2020-2021 school year brought unprecedented challenges to the students, faculty and staff of Newman Catholic Schools. A year that required a high-degree of adaptability in which teachers had to embrace hybrid methods of delivering instruction, both in-person and virtually.

Though students were able to attend classes in person, or virtually if needed, the requirement of social distancing, limited movement in the buildings, cancellation of clubs and events, and fewer fans in the stands made for a taxing year. With all that had to be endured, students, faculty and staff of Newman Catholic Schools can proudly stand tall for they weathered the storm with grace and humility.

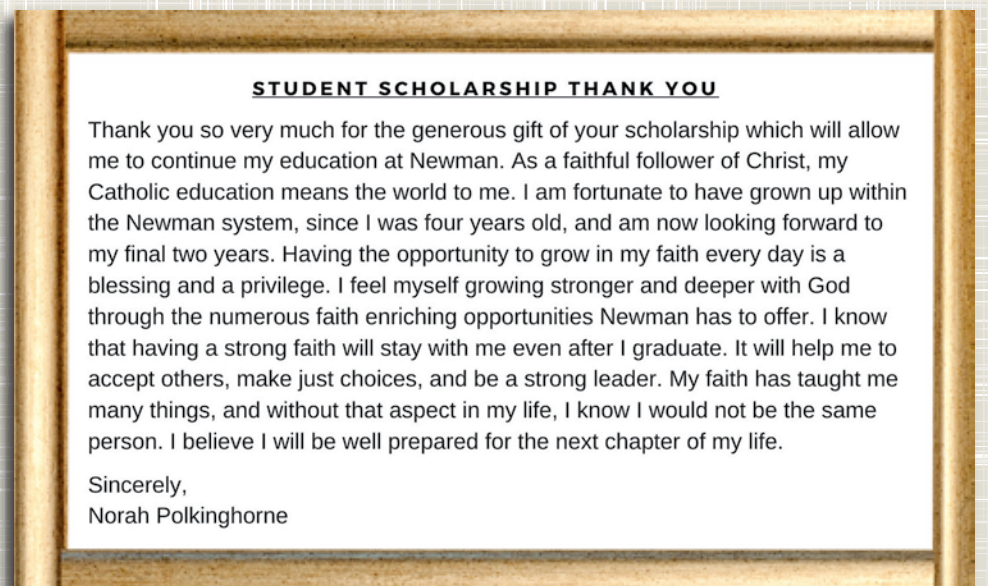
Coming out of a year filled with many obstacles has shown that the Newman Family can face any challenge and move forward knowing that the system has a bright future. Congratulations to all for a successful year!



• Scholarships

Newman Catholic Schools Scholarships & Donors

- | | |
|---|---|
| Judd S. Alexander Foundation | St. Mark Ladies Council |
| St. Anne Fatima Council | St. Matthew Parish |
| Diocese of La Crosse – Bishop William P. Callahan | St. Matthew Soup Supper Committee |
| Mary T. Carlson Memorial | St. Michael Parish Endowment Trust |
| Catholic Daughters | St. Therese Little Flower Council |
| Catholic Financial Life | Glen Mroczenski Memorial |
| Catholic Women’s Club | Josephine Myszkowski Memorial |
| Community Foundation of North Central Wisconsin | Robert & Ruby Neugebauer Memorial |
| Lucille & George Ferguson Memorial | Newman H.S. Class of 1961 |
| Marlene J. & William L. Fredrich Memorial | Newman H.S. Class of 1963 – |
| George L. Geisler Education Endowment Trust | Jim and MaryKay DeBroux |
| William L. Goggins Memorial | Newman Catholic High School Home & School |
| Raymond & Marie Goldbach Foundation | Eugene & Jean Raphoon Memorial |
| Thomas D. Hammer Memorial | Church of the Resurrection PCCW |
| Sally M. Hattenhauer Scholarship | Paul S. & Ruth M. Schultz Foundation |
| Randy Juley Memorial | Jean Urmanski Memorial |
| Katie Kennedy Memorial | Marilyn Spletter Memorial |
| Steven Klos Memorial | Harold & Ruth Tessmer Memorial |
| Knights of Columbus Council, Wausau #1069 | Fred Wakeman Memorial |
| Frank & Johanna Liszewski Memorial | Christopher Wallschlaeger Memorial |
| | Richard Yaeger Educational Scholarship |



SEPTEMBER		OCTOBER 2021						NOVEMBER					
S	M	T	W	T	F	S	S	M	T	W	T	F	S
1	2	3	4				1	2	3	4	5	6	
5	6	7	8	9	10	11	7	8	9	10	11	12	13
12	13	14	15	16	17	18	14	15	16	17	18	19	20
19	20	21	22	23	24	25	21	22	23	24	25	26	27
26	27	28	29	30			28	29	30				
Sunday	Monday	Tuesday	Wednesday	Thursday	Friday	Saturday							
					1	2							
						Homecoming Football Game - 1PM							
						National SAT Testing							
3	4	5	6	7	8	9							
	Feast of St. Francis of Assisi												
10	11	12	13	14	15	16							
	Columbus Day		Anniversary of Canonization of St. John Henry Newman										
17	18	19	20	21	22	23							
						National ACT Testing							
24	25	26	27	28	29	30							
Trunk or Treat			Deceased Alumni Remembrance	No School Staff Development	No School Regional Inservice								
			1st Quarter Ends	No School 4K WSD / DCE	No School 4K WSD / DCE								
			No School - 4K WSD										
31													
Halloween													

*Note calendar events are subject to change

Winter Wonderland Auction

~ Save the Date ~
November 6, 2021



Celebrate Our Students As We Come Together In Community!

OCTOBER		NOVEMBER 2021						DECEMBER					
S	M	T	W	T	F	S	S	M	T	W	T	F	S
	1	2	3	4	5	6	1	2	3	4	5	6	7
3	4	5	6	7	8	9	8	9	10	11	12	13	14
10	11	12	13	14	15	16	15	16	17	18	19	20	21
17	18	19	20	21	22	23	22	23	24	25	26	27	28
24	25	26	27	28	29	30	29	30	31				
31													
Sunday	Monday	Tuesday	Wednesday	Thursday	Friday	Saturday							
	1	2	3	4	5	6							
	All Saints Day Virtual Winter Wonderland Online Auction Opens	Election Day				Virtual Winter Wonderland & Live Auction National SAT Testing							
7	8	9	10	11	12	13							
Daylight Savings Time Ends	Virtual Winter Wonderland Online Auction Closes No School - 4K DCE			Veteran's Day									
14	15	16	17	18	19	20							
21	22	23	24	25	26	27							
				No School Thanksgiving Day									
28	29	30											
First Sunday of Advent													

*Note calendar events are subject to change



*May the birth of
our Savior
Jesus Christ
bring you and your family
endless prosperity,
blessings and peace of mind...*




**TRADITIONAL CHRISTMAS CONCERTS
ALL ARE WELCOME!**

NOVEMBER		DECEMBER 2021					JANUARY 2022						
S	M	T	W	T	F	S	S	M	T	W	T	F	S
1	2	3	4	5	6								1
7	8	9	10	11	12	13							2
14	15	16	17	18	19	20							3
21	22	23	24	25	26	27							4
28	29	30											5
													6
													7
													8
													9
													10
													11
													12
													13
													14
													15
													16
													17
													18
													19
													20
													21
													22
													23
													24
													25
													26
													27
													28
													29
													30
													31

*Note calendar events are subject to change

• Celebrating Our Early Childhood Centers



DECEMBER 2021		JANUARY 2022					FEBRUARY						
S	M	T	W	T	F	S	S	M	T	W	T	F	S
1	2	3	4				1	2	3	4	5		
5	6	7	8	9	10	11	6	7	8	9	10	11	12
12	13	14	15	16	17	18	13	14	15	16	17	18	19
19	20	21	22	23	24	25	20	21	22	23	24	25	26
26	27	28	29	30	31		27	28					
Sunday	Monday	Tuesday	Wednesday	Thursday	Friday	Saturday							1
2	3 Classes Resume	4	5	6 	7 Alumni Night - NCHS Girls BKB vs Phillips	8							
9	10 No School - 4K WSD & DCE	11	12	13	14 No School - 4K WSD 2nd Quarter Ends	15							
16	17 No School - 4K WSD & DCE	18 4K In-Session WSD & DCE	19	20	21	22							
23	24 No School	25 - Inservice	26	27	28	29							
30 Catholic Schools Week	31												

*Note calendar events are subject to change

• Celebrating Our Elementary Students



JANUARY		FEBRUARY 2022					MARCH																									
S	M	T	W	T	F	S	S	M	T	W	T	F	S																			
1	2	3	4	5	6	7	8	9	10	11	12	13	14	15	16	17	18	19	20	21	22	23	24	25	26	27	28	29	30	31		
Sunday	Monday	Tuesday	Wednesday	Thursday	Friday	Saturday																										
		1 NCS 2022-2023 Open Enrollment Begins	2	3 Catholic Schools Week	4	5																										
6	7 WPCP Enrollment Starts	8	9	10 All Schools Mass NCHS - 9:30am	11	12 National ACT Testing																										
13	14 Valentine's Day	15	16	17	18 No School No School - 4K WSD & DCE	19																										
20	21 Saint John Henry Newman - Birthday 4K In-Session WSD & DCE No School President's Day	22	23	24	25	26																										
27	28																															

*Note calendar events are subject to change

• Celebrating Our Middle & High School Students



FEBRUARY		MARCH 2022					APRIL						
S	M	T	W	T	F	S	S	M	T	W	T	F	S
			1	2	3	4	5	1	2	3	4	5	6
				Read Across America Day  Ash Wednesday 									
6	7	8	9	10	11	12	13	14	15	16	17	18	19
										 St. Patrick's Day	No 4K WSD & DCE 3rd Quarter Ends		National SAT Testing
20	21	22	23	24	25	26	27	28	29	30	31		
First Day of Spring	No School - Spring Break												
27	28	29	30	31									
											K-12 Scholarship Window Closes		

*Note calendar events are subject to change

• Celebrating Newman Athletics



MARCH		APRIL 2022						MAY					
S	M	T	W	T	F	S	S	M	T	W	T	F	S
1	2	3	4	5			1	2	3	4	5	6	7
6	7	8	9	10	11	12	8	9	10	11	12	13	14
13	14	15	16	17	18	19	15	16	17	18	19	20	21
20	21	22	23	24	25	26	22	23	24	25	26	27	28
27	28	29	30	31			29	30	31				
Sunday	Monday	Tuesday	Wednesday	Thursday	Friday	Saturday							
					1	2							
					April Fool's Day								
3	4	5	6	7	8	9							
						Cabin Fever National ACT Testing							
10	11	12	13	14	15	16							
					 No School - No 4K								
17	18	19	20	21	22	23							
 Easter	4K In-Session WSD & DCE No School Easter Monday Possible Weather Make-Up Day												
24	25	26	27	28	29	30							

*Note calendar events are subject to change

• Founder's Day

On Sunday, May 15, 2022, Newman Catholic Schools will host the Founder's Day award ceremony. An event that honors men and women who make a difference in the lives of the students, staff and families of Newman Catholic Schools.

Honorees are selected through a nomination and committee process and chosen based on the selflessness, dedication, service, and devotion they have shown in support of the Newman family. Founder's Day honors individuals who live Christ's word by awarding the:

- Cornerstone Award
- Distinguished Alumni Awards – Male & Female
- Athletic Hall of Fame Inductions – Male & Female
- Coaches Hall of Fame Induction
- Honored Volunteer(s) Award
- Honored Educator(s) Award

To be able to celebrate these men and women is truly a blessing. The system is eternally grateful to each of them for continuing to support Newman Catholic Schools and for believing in the power of a Christ-centered education. They are a beautiful example for Newman students of what it means to be Disciples for Jesus Christ.

Newman Catholic Schools wants to thank all of the past and future Founder's Day honorees for ensuring Newman can continue delivering excellence in Catholic education for many years to come.

We look forward to celebrating the 2022 Founder's Day honorees!

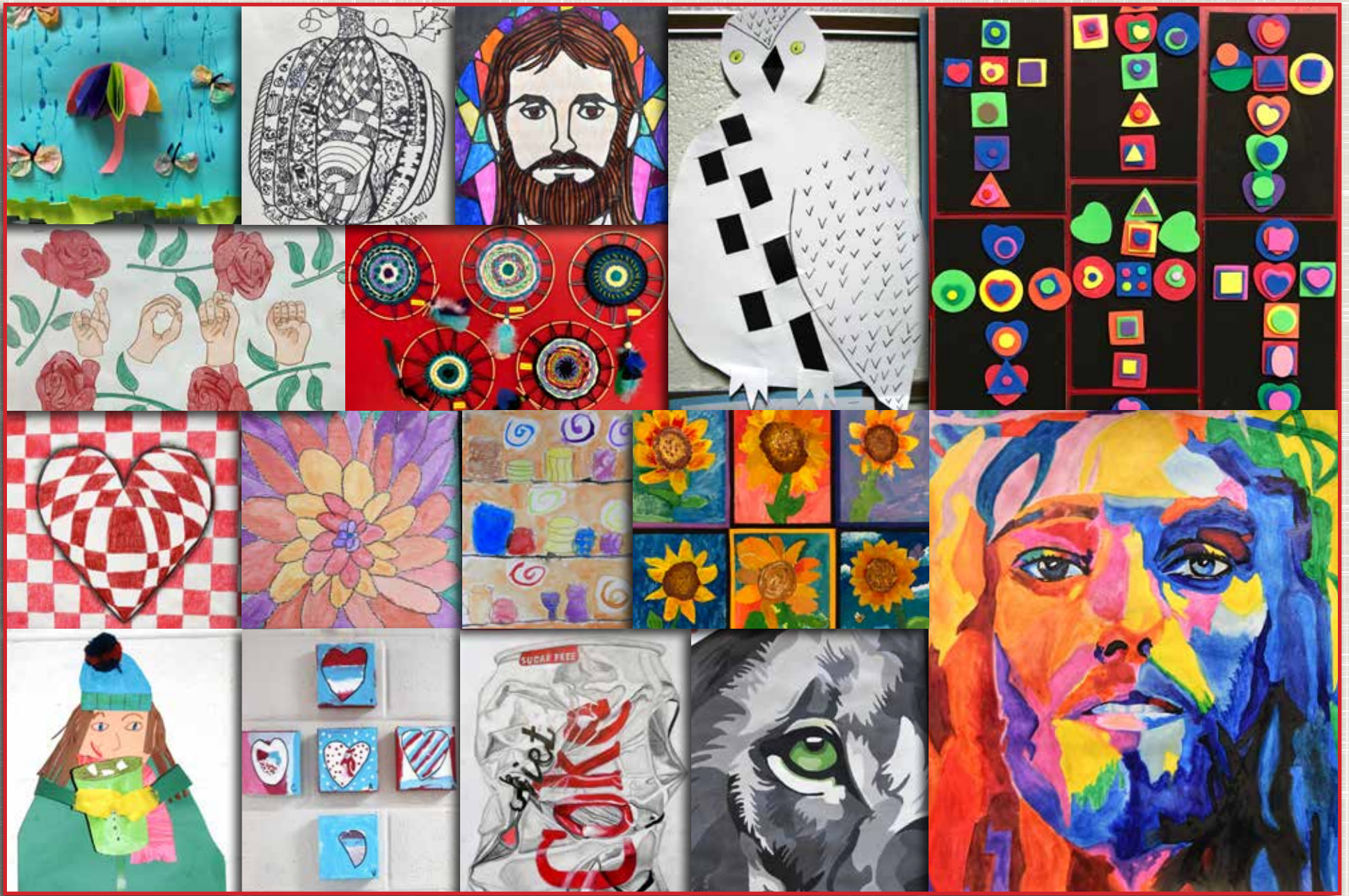
Pictured: The individuals shown here are honorees from past Founder's Day award ceremonies.



APRIL		MAY 2022					JUNE						
S	M	T	W	T	F	S	S	M	T	W	T	F	S
1	2	3	4	5	6	7							
8	9	10	11	12	13	14							
15	16	17	18	19	20	21							
22	23	24	25	26	27	28							
29	30	31											

*Note calendar events are subject to change

• Celebrating Our Artists



MAY		JUNE 2022						JULY					
S	M	T	W	T	F	S	S	M	T	W	T	F	S
1	2	3	4	5	6	7	1	2	3	4	5	6	7
8	9	10	11	12	13	14	8	9	10	11	12	13	14
15	16	17	18	19	20	21	15	16	17	18	19	20	21
22	23	24	25	26	27	28	22	23	24	25	26	27	28
29	30	31					29	30	31				
Sunday	Monday	Tuesday	Wednesday	Thursday	Friday	Saturday							
			1	2	3	4							
				4th Quarter Ends Last K - 12 Day Last Preschool Day	Last WSD & DCE Day - 4K	National SAT Testing							
5	6	7	8	9	10	11							
						National ACT Testing							
12	13	14	15	16	17	18							
19	20	21	22	23	24	25							
DAD HAPPY FATHER'S DAY													
26	27	28	29	30									

*Note calendar events are subject to change

• Celebrating a Successful SwingFest!





\$16,964 Raised in Support of Newman Catholic Athletics

On Friday, July 16, 2021, the Newman Catholic Schools Booster Club hosted the 6th Annual SwingFest once again. After having to take a year off due to COVID-19 restrictions, the excitement was palpable as golfers came together again in support of Newman Catholic Schools' athletic programs. 32 teams, a total of 128 golfers, enjoyed beautiful weather as they took to the links in an 18-hole scramble. It is truly a site to see so many Newman supporters coming together in support of the athletes. Due in great part to a wonderful showing of participants and a record number of hole and flag sponsors, SwingFest surpassed its goal, raising \$16,694.

As a NCS Booster Club event, all funds raised during SwingFest are used to support the purchasing of uniforms and equipment for athletes from 3rd through 12th grade. For the next few years, Booster Club will help ensure Newman Catholic Schools can sustain a fulltime Athletic Director by helping support that position's salary. For almost three decades, Newman Catholic Schools' Athletics has been blessed with the support of an active group of parent volunteers who believe strongly that students deserve to have an opportunity to play the sports they love.

As with any endeavor, it would not be possible without the support of many. The SwingFest planning committee would like to thank the hole and flag sponsors and those that donated items toward raffle prizes. Thank you to the student and parent volunteers for giving of themselves in support of a worthy cause. Having a strong volunteer base ensured the event could happen. Thank you all for the support!

All Parents within Newman Catholic Schools are part of the Booster Club and are welcome to volunteer at games and events. Help is always needed. Booster Club meetings are held monthly and open to all NCS parents.

JUNE		JULY 2022					AUGUST						
S	M	T	W	T	F	S	S	M	T	W	T	F	S
1	2	3	4				1	2	3	4	5	6	
5	6	7	8	9	10	11	7	8	9	10	11	12	13
12	13	14	15	16	17	18	14	15	16	17	18	19	20
19	20	21	22	23	24	25	21	22	23	24	25	26	27
26	27	28	29	30			28	29	30	31			
Sunday	Monday	Tuesday	Wednesday	Thursday	Friday	Saturday					1	2	
3	4	5	6	7	8	9							
													
10	11	12	13	14	15	16							
					Swing Fest	National ACT Testing							
17	18	19	20	21	22	23							
24	25	26	27	28	29	30							
31													

*Note calendar events are subject to change

• State of NCS

Completion of each year's annual report offers an opportunity to keep Newman Catholic Schools' stakeholders updated about the past year and the system's fiscal performance.

As expected, the 2020-2021 school year was like no other as Newman Catholic Schools (NCS) took on the task of operating under a global pandemic. The system embraced every challenge, delivering in-person and remote instruction five days per week without a reduction in schedule.

During this past school year, NCS took great strides towards becoming fiscally responsible. The system was challenged by the Diocese of La Crosse to make necessary moves to reduce the operating budget for the 2021-22 school year. Through analysis of expenditures throughout the system, NCS administration was able to identify areas in which reductions totaling \$650,000 could be made to ensure a balanced 2021-2022 budget and sustainable debt repayment plan.

Maintaining fiscal health will continue to be a priority for Newman Catholic Schools, beginning by fostering a strong revenue foundation funded through tuition & fee payments, fundraising efforts, and the continued support of local parishes within the Wausau Deanery. Accomplishing this goal will require continued analysis of system practices and opportunities. Thanks to the continued efforts of key stakeholders, NCS has a five year strategic plan to help guide the system on its path to future success.

Due to the continued and generous support by many benefactors, great strides have already been made to meet objectives set within the strategic plan. For instance, NCS was able to take significant steps to improve technology needs which were necessary to deliver virtual instruction during the 2020-21 school year. Additionally, NCS completed capital projects in the gymnasium at the middle/high school; including, installation of a new gym roof, improved sound system, and with the support of Greenheck, upgraded ventilation systems.

Newman Catholic Schools continues to have a strong donor base that blesses the system with financial support, allowing students to benefit from a more rigorous education through research based educational programs. Curriculum is being continuously reviewed to ensure students are receiving a horizontally and vertically aligned education, better preparing them for a successful future. Through a strong fundraising campaign during the 2019-20 school year, \$70,000 has been reserved to purchase instructional materials to support the rewritten curriculum.

NCS students will continue to benefit from donor support going into the 2021-22 school year thanks to donations made in support of the Chromebook Initiative. Through the Fund-a-Need initiative at the 2020 Winter Wonderland auction and a generous donation made by the Milton & Betty Wisler Estate, \$120,000 was raised, allowing Newman Catholic Schools to enter into a leasing program which will bring Chromebooks to each student. Additional access points will be added to increase the speed reliability of connections within each building.

Moving forward, an emphasis will be placed on professional development. Investing in teachers is essential to ensuring Newman Catholic Schools' future success. Continuous professional development helps members of NCS's faculty, at all levels, be on the cutting edge of educational instruction. Efforts to foster professional development opportunities began this summer when Newman Catholic Schools' hosted its first summer academy for teachers and administrators.

Newman Catholic Schools is blessed to have the support of many who believe in the system's mission. Generous support that ensures Catholic education has a bright future.



• Giving Report 2020 / 2021

ANNUAL FUND DONORS

CARDINAL CLUB (\$10,000+)

Marlys and Norbert Arnoldi
Jerome and Karen Duginske
Kerry and Mark Fehrman
Ronald and Janet Klimisch Fund

BISHOP'S CLUB (\$5,000 - \$9,999)

Michael and Virginia Hutchins
Mrs. Betty Lang

DEAN'S CLUB (\$2,500 - \$4,999)

Monica and Thomas Blasczyk
Linda and Robert Davis
Benjamin and Leah Herdrich
Roy and Elaine (Jurkowski) LaPean
Tom and Lee Ann Lella
Tom and Bette Nieuwenhuis
Paul and Ruth Schultz Foundation
Duane and Kimberly Radtke

PRESIDENT'S CLUB (\$1,000 - \$2,499)

Connexus Association
Paul and Linda Dros
Gary and Nancy France
Gabler Family Charitable Foundation
Mary Gabrielski Chaston
Barbara Healy
Samir and Sarita Ishak
John and Mary Hartwig Foundation
Cynthia Kielkucki
David and Diane Klimisch
Vivian M. Krieg
Richard Malak
Philip and Lori Menzner
Michael O'Connell
Jeffrey and Amy Plier
Dianne and Jerry Ress

Roger and Linda Sisterman
Elizabeth and Thomas Tracy
United Health Group
Robert and Keri Wulf

PRINCIPAL'S CLUB (\$500 - \$999)

Anonymous
Mrs. Conale Bessey
John Cline, Jr.
Rita Esselman
Joseph Gliniecki and Yolanda Garces
Michael Gorski and Paula Whitsell
Ronald N. Grimm
John and Sally Hattenhauer
Matthew Jansen and Susan K. Jansen '86
Marcia and Cary Kangas
Mrs. Elaine Koppa
Glenn R. Krieg
Ronald and Caryn Miles
Jenifer Nieuwenhuis-Hardel and Jeff Hardel
William and Bonnie Kay Radtke
Leurelle S. Reynolds
Joseph W Richards
James and Lucille Sorenson
Paul and Joan Steinlage
William and Kathleen Waldvogel

PATRON (\$100 - \$499)

Anonymous (3)
Bruce and Beverly Abbott
Mary Adams
Theresa and Fred Aichele
Mrs. Elizabeth J. Albert
Charles and Janet Amundsen
Michael S. Bandoch
David and Lauren Barr
James Bartelme
Bernadette Baumann
Theodore and Diana Beck
Carol A. Beyer
Gary P. Blaskowski
William Brennan
Katherine R. Brown
Timothy and Jane (Bretl) Brzezinski
Michael and Ellen Burek
Dianne Butterfield Egan and Gregory Egan

Patrick and Maureen Cotter
Barbara Davis
Thomas DeLisle
Mary Beth Denfeld
Mary Ann Dettmann
Barbara Dilley
Joseph and Kelly Dreas
Craig and Kim Drefcinski
Thomas and Brenda Ebben
Stewart and Tracy Etten
Robert and Margaret Feider
Craig and Catherine Flagel
William and Clara French
Steven and Judith Fuchsteiner
Ann Gabler and Hugh McPeck
Adam Garske and Margie Borra-Garske
Agnes Gliniecki
Russell and Colleen Golomski
Patrick M. Green
Rev. William Grevatch
Jerry and Sue Grunow
Donna and Roger Hagenruber
Richard and Ann Halfpap
Marilyn Hampton
Mark and Barbara Hein
Orville and Jo Ann Heinz
Al Hlavachek
Hormel Foods Corporation
Julie A. Huebner
Amy and Mark Huftel
Katherine and James Hughes
Hurd Counseling and Educational Psychology
Gary and Mary Jeub
Arnold and Judith Kaiser
Brad and Sarah Keene
Mary Kimball
Ronald Klein and Kathryn Wachtl
John and Joan Klosinski
John A. Koltes
Patricia A. Koppa
Gerald and Phyllis Koppa
Kenneth and Lynette Kowalski
Rev. Thomas J. Krieg
Kathryn C. Krieg
Richard J. Krummel
Robert A. Kucirek
Roger D. Lang
Christine (Chaloupka) and Bardsson Larrabee
Steven and Nicole Lipowski
Xiong Lo and Ying Yang

Taosia and Gaolee Lo
Michael and Jeanne Lynett
John and Jill Mabry
Virginia and James Martin
Rev. Bernard O. McGarty
Michael R. Meister
David Molinare and Nancy Battau Molinare
Mrs. Virginella Mroczenski
Michael and Ana Murphy
Sherry Nauman
Paul and Ramona Ott
John and Sheila Otto
Charles and Jean Pitterle
Sally and Thomas Polzer
Betty and Michael Porrey
Judy Riehle
Katherine and Robert Rogalla
Michael Rolling
Therese Marlene Rolling
Albert and Margie Romportl
Gerald and Gaye Rosekrans
Barbara and Joseph Rygiel
Mrs. Dorajean Schield '56
John and Ednatha Scholz
James and Sharon Schroeder
Laurie A. Schroeder
David and Ellen Schumann
Leon and Lori Seliger
Jeff and Joan Seliger
Diane and Patrick Sippl
Ronald and Valerie Slewitzke
Wallace and Lucille Sonnentag
Kathryn M. Spencer
Michael Spletter
Peter and Stacie Stanke
Rick and Christine Svennes
Karen Tauferner
Linda M. Thompson
Allen and Melissa Thums
John and Jennifer Trucco
Barbara E. Vander Leest '57
Charles E. Wadzinski
Mrs. Alice V. Wagner
Roman and Lisa Wagner
Charles J. Waldvogel
Mark and Jennifer Weaver
Hershel and Janice Webb
Daniel and Veronica Witter
Louise and Kevin Wolf
Nicole and Curtis Wolfram
Nancy Ziegler-Waddell

• Giving Report Continued

FRIEND (\$1 - \$99)

Anonymous (3)
Julie and Mark Allington
Catherine Andersen
Vicki Jeanne Bachmann
Catherine and William Barnes
Dennis and Nancy Bartosch
Jon and Anne Bauman
Anthony Blaskowski
Judith Stachowiak Bloch
Barbara A. Britten
James and Nancy Brouchoud
James and Teresa Connell
John Deininger
Drew Dion
Ann M. DuBore
Charles and Judith Durand
Bernell G. Ellenbecker
Frank and Donna Ellenbecker
Karen (Kaiser) Feit
Dianne and Robert Fitzke
Rose and Thomas Gauerke
Tom Goodspeed
Ann Goodspeed
Susan and James Gould
Susan L. Gress
Monica Haubenstricker
Marlene Hitz
Donald and Arlene Hofmann
DuWayne and Mary Jo Hull
John and Carol Jalinski
Susan (Hoenisch) Johnson
Erin Kane
Roderic and Mary Karpen
Mr. Roger H. Kemp
Arnold and Rita Klos
Michael and Janet Klosinski
Barbara and Thomas Klumpyan
Debra Knee
Mary (Jorgenson) Knight
Kathryn M. Kocik
Robert F. Konkol
Eugene and Sharon Kostroski
Jeffrey Kostroski
Sandra and Brian Kraimer
Jan (Nigbur) Kreibich
Rosemarie Laffin
Roberta Laffin
Arthur and Gladys Landowski
Dale J. Lang

Norma (Skrzypchak) Lang
Wayne and Christine Leiternann
Matthew and Patricia Linn
Dean and Katy Little
Judith and Patrick Lynch
Steven and Carolyn Mais
Mary Markarwicz
Geraldine M. McCarthy
Timothy and Maggie McNiff
Mary and Patrick Metzinger
Ronald J. Meyer
Lynda M. Mihaljevic
Timothy and Susanne Nettesheim
Joan E. Netzel
Patricia A. Nitzsche
Stanley and Lorraine Olejniczak
Deanna and James Olejniczak
James H. Oliver
Mark and Melanie Peterson
Thomas P. Powers
Charles and Gail Reynolds
Thomas Rossi '76
Susan Rusboldt
Catherine Sanders and Matthew Preissner
Lawrence and Bonnie Sanders
David and Laurel Schmieder
Judith A. Schneck
Christine and Roger Sefton
Barbara L. Sherfinski
Edmund Sikorski and Diane Veith
Winifred Spencer
Mary (Nikolai) Steffen
Joseph and Theresa Stieber
Judith Ann Stroick
Mrs. Paulette Syring
Kenneth and Judy Teeters
Bernice (Stachovak) Thering
Jillian and Steven Van Hefty
Arnis and Shelley Vecitis
Andrew M. Wagner
Mark and Yvonne Wagner
Jude and Joseph Walkowski
Heather and Patrick Weberpal
Susan M. Wenzel
Joe and Dolores Writz
Georjean and Robert Zilles

IN HONOR OF

Donald Clancy
John Cotter
Del Gabrielski
Dave, Phil and Lisa Reynolds
Sister Emma OP

IN MEMORY OF

Russell Dahm '57
Charles Straub '61 and
Thomas Straub '63
Patrick Mattson '68
LeRoy Seliger '64 and Jon Seliger '80
Jane Amundsen
John and Darlene Blaskowski
Yvonne Niewenhuis Cushman
Sister (Anna) Jeanne Crapo
Dan Crys
Rev. Tom Etten
Violet Hitz and Family
Janet Gabler
Frank and Catherine Gorski
Carman Gress
Nick Grimm
Maynard and Dorothy Hollis
Celesta Kaiser
Mike Keefe
James Kimball
Theresa Klosinski
Roy Kocik
Thomas McCarthy
Robert Mercier
Alphonse and Glen Mroczenski
Jacob and Lorraine Nikolai
Eugene Palecek
William and Geraldine Radtke
Mr. and Mrs. E.C. Radtke
Paul Reynolds
Dawn Rolling
Terry Rossi
Dennis & Russell Schneck
Bonnie Meyer Schultz
Deborah Sefton
Art Seidl
Leonard and Jolanta Seliger
Sylvester and Stella Sherfinski
Tom and Helen Slewitzke
James H. and Verene Sorenson
Allen Syring

Merle A. Trierweiler (Mrs. T)
Ginger Wadzinski
George Paul Waldvogel

ESTATE GIFTS

Betty and Milton Wisler

CASH DONORS - GENERAL NCS

AbbyBank
Amazon Smile Foundation
Stephanie and William Bendel
Betty Christianson
Community Foundation of North Central Wisconsin
Diocese of La Crosse
The Dirks Group
Terry and Rebecca Garske
GPM Southeast
Jeff and Debbie Gulan
John and Sally Hattenhauer
Richard and Colleen Hawley
Ronald and Janet Klimisch
Jill and John Mabry
Network for Good
Northcentral Technical College
Religious Care Foundation
Jeanmarie Simpson
Two Eagles Foundation Inc.
Faith and Robert Winter
Gwen Wood

Winter Wonderland

Table Sponsor

BMO Harris Bank
France Propane Service, Inc.
GI Associates, S.C.
Orthopaedic Associates of Wausau, S.C.
Partners in Planning, LLC
Peoples State Bank
Rib Mountain Eye Care
Rib Mountain Paper, LLC
The Dirks Group
UMR

Seraphim (\$2000+)

Anonymous
Cory and Heather Erdman
Gastrointestinal Associates, SC
Ray and Alice Hartke
Mark and Kerry Hoffmann
Marathon Cheese Corporation

Cherubim (\$1000-\$1999)

John and Sally Hattenhauer
Jim and Lisa Sobolewski
UMR

Archangel (\$500-\$999)

Intercity State Bank
Jim and Hilary McIntyre
Wausau Container Corporation

Guardian (\$250-\$499)

Marie and David Burish
Matthew and Lori Hattenhauer
Dave and Laurie Kallstrom
Mary Kimball
Denis and Jeanne Lang
Peoples State Bank

Angel (\$1-\$249)

Bruce and Beverly Abbott
Brigitte Espinoza
Patti Flaker
Claire Flannery
Juliana and Bill Franzen
Terry and Rebecca Garske
Heather and Randall Haupt
Knights Of Columbus, George J. Schreier Council #1069
Theresa M. Legner
Dean and Katy Little
Laurie Schroeder

Winter Wonderland Fund-A-Need Donors

Anonymous
Jim Baker
Aubrey Brill
Mike Chicka
Autumn Clermont
Michele Dirks
Ellyn Kay Fuchsteiner
Jessica Gaffaney
Lynne and Steve Goethel
Angela Guld
Holly Gullo
Raymond Hartke
Leah Herdrich
Incredible Bank
Chris and Robin Kalk
Sarah and Brad Keene
Kris Kerns
John Knoll
Julie Kolb
Sandy and Marty Krach
Kevin and Jeana Kraft
Dr. Christopher Kucharski and
Dr. Veronika Gagovic
Denis and Jeanne Lang
Tammy and Greg Leischer
Ruth Lietz
Jill and John Mabry
Kelly Meverden
Scott and Alissa Murch
Todd and Camille Nicklaus
Michelle Roiger
Jeni Seidel
Tina Seidl
Angie Shields
Stacie Stanke
Julie Thiel
Allen Thums
Candy Thurs

Faith Wilfley
Gwen Wood
Laura Zeimetz

Underwriters

Cory and Heather Erdman
Dianne and Jerry Ress
Eyecare Center of Wausau
Ray and Alice Hartke
Rob and Keri Wulf
Robert Groene and Michelle Roiger-Groene

Winter Wonderland Gift In Kind Donors

Anonymous
Aspirus Plastic Surgery
Kurt Baumann
Sarah Beaumont
Benaszkeski Tree Farm
Bergstrom Automotive
Jeffrey and Aubrey Brill
Cory and Heather Erdman
Crane Meadows Golf Course
Romy Deegan
Mike and Brittany Disher
Eyecare Center of Wausau
Kerry Fehrman
Jessica Gaffaney
Goal Line Golf and Hockey Shop
Green Bay Packers
Greenwood Hills Country Club
Jerry and Sue Grunow
Hodag Country Festival
Morgan Hodek
Hougum Law Firm, LLC
Intercity State Bank
The Keene Family
Chris Kelnhofer
Kris Kerns
Chris Kimball
Christina Kimball
King's Campers
Ron and Jan Klimisch
Janet Klosinski
Bill and Julie Kolb
Victor and Kathy Kopacz
Jeana Kraft
Jim Kryshak Jewelers
The Lamplighter
Greg and Tammy Leischer
Jaclyn and Jeremy Lepak
LIFT

Steven and Nicole Lipowski
Jill and John Mabry
Marathon County Parks, Recreation & Forestry
Marathon Town and Country Store
McDonald's Restaurants
Jim and Hilary McIntyre
Phil and Lori Menzner
Bryan Mergen
Lisa Merrill
Milwaukee Brewers Baseball Club
NCECC: St. Therese
NCES: St. Anne Elementary School
NCES: St. Anne Families
NCES: St. Mark Elementary School
NCES: St. Mark Families
Newman Catholic Middle and High School
Margaret Pagoria
Pine Valley Golf Course
Polito's Pizza
Psycho Sea Glass Sisters
Julie Rice
Kate Rice
Margee Romportl
Kendra Scott Field Events
Jeni and Scott Seidel
Shadow Lake Enterprises, Inc. - Subway
Jerzy and Maria Sikora
Paula and Russ Slaby
Lisa Sobolewski
Studio E Salon & Spa
Tessmer Designs
Julie Thiel
Randy Verhasselt
Mike and Julie Vesel
Wausau Country Club
Faith Wilfley
Willow Springs Garden, LLC
Wisconsin Woodchucks Baseball
Nick and Laura Zeimetz
William and Krista Zubke



• Celebrating Recent Retirements

At the end of the 2020-2021 school year, Newman Catholic Schools said goodbye to several of its faculty members as they chose to retire from teaching within the system. In gratitude for the years of dedication and devotion they gave to the art of teaching, and for the love that they offered their students, the Newman family would like to offer its sincerest gratitude. This group of teachers will truly be missed but they will forever be a part of Newman Catholic Schools. God bless each of them as they begin their new journey.



Ann McManus - NCMS/HS

Mrs. McManus is a lifelong member of the Newman family; as a student (primary and secondary, class of 1977), parent, and employee. Mrs. McManus began her career in 1983 teaching grades 5-8 at St. Francis Cabrini. From 1985-1992, she temporarily moved away from Newman to work with the preschool programs at the Woodson YMCA and the DC Everest Community Ed. Mrs. McManus returned to her roots in 1992 as a preschool teacher at St. Therese, moving to St. Anne in 1995 where she taught grades 1, 2 and 4. From 2015 until her retirement from NCS, Mrs. McManus worked in administration, becoming the first Newman alum to become principal of Newman Catholic Middle & High School. Though no longer a part of the Newman faculty, Mrs. McManus will forever be a part of the Newman family.



Laurie Germain - NCMS

Mrs. Germain joined Newman Catholic Schools in August of 2016, bringing a fresh perspective and renewed energy to the middle and high school art programs. Prior to joining the Newman Catholic Middle and High School team, she received a Bachelor's Degree in Graphic Design with a minor in Art History. She taught for 11 yrs at St. John Lutheran School in Merrill. Newman Catholic Schools was blessed that Mrs. Germain chose to share her talent with our students. She encouraged students to take their creativity to the next level, challenging themselves to create beautiful pieces. Mrs. Germain celebrated the students' successes by ensuring their art was displayed for all to enjoy. Though the arts program will continue, the students' will truly miss having Mrs. Germain to help foster their artistry.



Diann Misoni - St. Anne

After 38 years, Mrs. Misoni begins a new chapter. Though she spent a couple of years teaching elsewhere, she spent her career with Newman Catholic Schools. Quite fitting as she always preferred teaching at a small, parochial school in which education was immersed in faith. During her career with the Newman system, Mrs. Misoni taught at the preschool or kindergarten levels, beginning at St. Matthew before moving to Cabrini, St. Michael & St. Mark in a floating position, St. Mark full-time, and then finally to NCS: St. Anne. No matter which building she taught in, Mrs. Misoni felt blessed to have been part of a community in which the staff was supportive of each other, had fun together, and truly wanted the best for their students.



Kate DeLonay - St. Anne

Mrs. DeLonay brought the love of art to students of Central Wisconsin for 43 years, the last 29 years within the Newman Catholic Schools system. Mrs. DeLonay joined the Newman team as an elementary art teacher, teaching students at Holy Name, St. Therese, St. Mark, and St. Michael. For the last 11 years, her home was at NCS: St. Anne where she brought unique and innovative art experiences to the students she taught. A Newman graduate from the Class of 1974, bringing her talents back to the students of our local Catholic community was a blessing for it allowed her to share her deep faith with the students, helping them keep Jesus in their lives. Mrs. DeLonay's creative spirit and love for the students will be greatly missed.

• Legacy of Catholic Education

The legacy of Catholic education in Wausau began 138 years ago when five Sisters of Notre Dame journeyed north from Milwaukee to help St. Mary Parish build the first Catholic school. Their dedication to the children of Wausau's early families laid a strong and lasting foundation for future generations to build upon. As the number of Catholic parishes grew, so did the number of Catholic schools, leading to Newman Catholic Schools as it is today.

The structure of Catholic education has weathered many changes through the years, adapting as needed to ensure a Christ-centered education remains a choice for our youth. From six weeks old to the day they graduate, children are able to grow in their faith and knowledge as they develop a deeper relationship with Jesus Christ. A strong foundation that leads to a successful future.

When asked why he felt Catholic education was important, Rev. Joseph Richards offered the following words:

"I never anticipated it during my middle and high school years at Aquinas Catholic Schools, but Catholic education has ended up leaving a sizable footprint on my own personal history. I was a transplant myself from Northern California back in 2000, and I found in those tight-knit classes the landing pad I needed to make a new home here in Wisconsin. Over those school years a few classmates came and went, but for the most part the kids who walked down the aisle of that warm gymnasium with me on graduation day were the same ones who had welcomed me in seven years before. We're a bit scattered to the wind a decade and a half later, but the education and formation we received as young disciples during those school days is still leaving a mark on the work we do, the families we raise, and the imprint we're leaving on our own communities." – Fr. Joseph Richards

With the start of the 2021-2022 school year, Newman Catholic Schools begins the next chapter in its story and the legacy of Catholic education in Wausau continues. To take this journey as a community in faith is truly a blessing.

Thank You for Your Generous Support

Holy Name of Jesus Parish - Wausau
Rev. Samuel Martin

Mary Mother of Good Help - Wausau
Rev. Alan Burkhardt

Nativity of the Blessed Virgin Mary - Marathon
Rev. Msgr. Joseph Diermeier

St. Agnes Parish - Weston
Rev. Greg Bohren

St. Anne Parish - Wausau
Rev. Thomas Lindner

St. Mark Parish - Schofield
Rev. Allan Slowiak

St. Matthew - Wausau
Rev. Robert Thorn

St. Michael & Church of the
Resurrection Parishes - Wausau
Rev. Msgr. Mark Pierce &
Rev. Joseph Richards,
NCMS/HS Chaplain

St. Paul Parish - Mosinee
Rev. Don Mueret

St. Therese Parish - Rothschild
Rev. Albert Joseph Saleth

Helping our students grow in knowledge and faith would not be possible without the support of our local parishes and pastoral leadership. From the entire Newman family, we say thank you for the selflessness and dedication offered to us by our Catholic community. Through your sacrifice and support, Catholic education continues to be an option for our youth. An educational option that focuses on academic excellence embraced by the Catholic faith.

We are one in Christ and one in our desire to support the youth of our Catholic community. Your support is a blessing!

• Alumni Legacy of Support



Ron and Jan Klimisch

Newman Catholic Schools is blessed with many legacy families. Families that span not only alumni generations but also through their support of Catholic education. The Klimisch Family is a strong example of such a legacy. One that includes the graduation of multiple alumni, multi-level volunteerism and significant financial support, all due to a deep belief that Catholic education must be an option for our local community.

Ron Klimisch is a lifelong product of Catholic education, from his early years at St. James elementary school through graduating from the University of Notre Dame. Ron began his time with the Newman system while high school classes were still being held at St. Mary's. His class finally entered the Newman building for their sophomore year, the fall of 1956. Though he describes his time at Newman High School as a "normal high school experience", he is grateful for the foundation that a Catholic education provided him. A foundation that laid a strong path for a truly successful future.

Upon graduating in 1959, Ron went on to receive a Bachelor's Degree in Finance at the University of Notre Dame. While at Notre Dame, Ron was part of the ROTC program and after graduating in 1963, he was commissioned into the Army at Fort Sill, Oklahoma. He spent the next two years stationed in Germany before being honorably discharged. After leaving the Army, Ron spent six months touring Europe until he ran out of money and had to come home to begin his career.

Wanting to get into banking, Ron took a job as a Financial Analyst with Globe Union in Milwaukee, WI. A position he held for a year and a half before moving back to Wausau in 1968 to buy into Wausau Supply, a company started by his brother, Conrad, in 1947. In 1970, Ron took over the family business, holding the president's position until his retirement.

Ron met the love of his life, Janet, while living in Milwaukee. Jan, also a product of Catholic education, grew up in West Bend, attending Catholic schools during her formative years and again at Mount Mary College, an all-girls school in Milwaukee. The two married in August of 1968 and soon after began their lives in the Wausau area. Though it wasn't where they expected to settle down, they soon came to find that it was a wonderful place to raise their family. A family that grew between 1969-1972 with the birth of their daughters, Kristin, Maggie, and Kathy (Newman Catholic High School classes of 1987, 1989, and 1990, respectively).

When choosing where their daughters would attend school, the choice between Catholic and public education was an easy one. Ron and Jan sought for their daughters the same structure and foundation they received through each of the Catholic schools they attended. The Klimischs believe strongly that a Christian-based education offers a challenging experience and strong foundation in which students can be held to high standards.

Support of the Newman Catholic Schools system began while their children were students in the system, as volunteers, leaders, and financial supporters. The Klimischs acted as Chairpersons of the Night of Elegance during its early years and were part of the original planning group behind the system's benefit auction which began in 1987. These two events eventually merged to become the Winter Wonderland event that we still celebrate 34 years later.

When their children graduated, Ron and Jan continued to volunteer and attend the events for several years but eventually stepped back until Ron chose to become the St. Therese Parish Representative on the system's Finance Committee. For the last several years, Ron has shared of his significant knowledge in business and finance, helping ensure Newman Catholic Schools has a bright future. Financially, Ron and Jan have become the system's strongest supporters, donating over \$1,500,000 towards Catholic education. Their generosity has helped in so many ways; helping to improve instructional rigor and technological support, to complete capital projects, and to fill budgetary shortfalls. Newman Catholic Schools is truly blessed to have the Klimischs' support for it is through the generosity of many that ensures Catholic education continues to be an option in the Wausau community.

Ron and Jan Klimisch have truly lived the Newman Catholic Schools mission for they have shown what it is to live their faith and be disciples for Jesus Christ.

• Student Features

Charlie Shields Class of 2022

Going on the St. Anne Parish Mission Trip is always my favorite part of summer. This year we took a road trip to Grand Rapids, MI.

Our group consisted of about 30 students and 8 adult volunteers. Although this year was a little different due to Covid - we still had a great time and accomplished what we set out to do, change lives!

Mission Trip gives me the opportunity to meet kids from all around the country and even get to know more kids from right here in Wausau. Meeting people from other states that all share the same faith as me is a great experience. I still have friends that I met on the mission trip in Kansas two years ago!

Due to Covid, we weren't able to work with other churches at the work sites but our St. Anne's group was able to grow closer together while we repainted homes and built ramps and porches for elderly residents. I always love seeing the residents' reactions to how we changed their home. It means so much knowing that we had a part in changing someone's life while working together and encouraging each other in the process.

Mission trip isn't all work - we have lots of fun too! The evenings are spent playing games and listening to music, socializing and praying together. We always have a "free day" on Wednesday - this year we went tubing which was really fun.

I am already looking forward to next year!



Johanna Hougum Class of 2022

When people ask me about the camp I went to this summer, it's obvious that there are some misperceptions. Because yes, I went willingly to live in the woods

without a phone or the internet (or even my native language) for four weeks. I wasn't forced, and I loved it. It was by far the best part of my summer, and if I could've, I would've stayed there from the day after school ended until the day before the new school year started.

Sup Sogui Hosu, or Supho, as it has been nicknamed, is Concordia College's Korean Language Village, and a few programs are available. My friends and I went as credit villagers, and as a result of an intensive 24/7 immersion setting paired with around three hours of language class a day, we learned a year's worth of Korean in just four weeks. This sounds terrifying, but once you're there, you pick up extremely quickly. Over the decades, Concordia has perfected their technique, and learning is so easy and natural that most of what I learned was subconscious.

Language class was by far my favorite part of the day, but I also loved spending free time with my cabin down at the beach! I was in the smallest cabin, with only three other girls and two counselors, but we became best friends in only two or three days. Finishing portfolios and cramming grammar structures with the help of our counselors on late nights, and then talking and taking pictures on digital cameras until we were finally forced to sleep with aggressive Korean goodnight wishes are memories that I will always treasure. The community at Supho within cabins and classes quickly became strong, and although we were isolated, we were never lonely.

We all still talk now, in Konglish groupchats and servers, and though no one had the same experience, we all left with the same thought-- I can't wait for next summer.



• Winterwonderland Auction

\$162,281 RAISED ~ 81% OF THE GOAL!

The 33rd Winter Wonderland benefit auction was fraught with the unexpected. A year in which the unknown forced necessary change and a move to a virtual event. Like many non-profit organizations, Newman Catholic Schools had to make a choice regarding the fate of the long-running fundraiser. The easiest choice might have been to cancel the event for a year but that would not have been the Newman way for Newman Catholic Schools has proven time and time again that adaptation is key to its survival. With that dedication in mind, the Winter Wonderland committee chose to move forward but adapt by taking Winter Wonderland virtual. On Thursday, November 12th, the first ever online event took place and though the overall goal was not met, the Newman family once again rose to the occasion showing how dedicated they are to the students, faculty and staff.

Profits from Winter Wonderland, support the system's operating budget and help bridge the gap between tuition costs and the true costs of educating each student, a delta of over \$4,000. Of the \$162,281 raised, \$50,850 will directly support the Chromebook initiative, helping fulfill a goal of 1-to-1 technology in which each student, kindergarten through 12th grade, has access to a Chromebook assigned to them. Newman Catholic Schools has taken significant steps to increase students' access to technology which supports instruction. A need that became even more evident during this past year when remote learning became a necessity.

Newman Catholic Schools is grateful to the 2020 event sponsors, volunteers and donors who helped ensure Winter Wonderland was a success. To know that there are so many who believe in the power of a Christ-centered education is truly a gift and proof that Newman Catholic Schools is embraced by many who are devoted to the education of our youth. ***With our deepest gratitude...thank you all!***

Save the Date for the 34th Winter Wonderland IN-PERSON on November 6, 2021



• Newman Cardinal Fund

Please Consider Donating in Support of Our Mission...

Newman Catholic Schools promotes Catholic Faith, service and academic excellence to cultivate a deep relationship with Jesus Christ and to become lifelong learners.

Every dollar donated to the Newman Cardinal Fund directly supports the students, faculty and staff of Newman Catholic Schools. Tuition costs each year do not cover the true cost of educating a student so the system relies on successful fundraising campaigns to fulfill its mission. Without the generosity of many, NCS would not be able to make the improvements necessary to ensure students benefit from:

Your Donation Provides



Investing in the students' futures means investing in the leaders of tomorrow

• Education Commission

- Rev. Msgr. Mark Pierce
St. Michael Parish, Church of the Resurrection Parish, Dean
- Rev. Al Burkhart
Mary, Mother of Good Help Parish
- Rev. Joseph Richards
Assoc. Pastor – St. Michael Parish, Church of the Resurrection Parish, Chaplain NCMS/HS
- Rev. Tom Lindner
St. Anne Parish
- Rev. Samuel Martin
Holy Name of Jesus Parish
- Rev. Allan Slowiak
St. Mark Parish
- Rev. Albert Joseph Saleth
St. Therese Parish
- Rev. Robert Thorn
St. Matthew Parish
- Rick Svennes
Commission Committee Chair
St. Mark Parish Rep
- Chris Pfender
Finance Committee Chair
- Ross Bodenheimer
Athletics Committee Chair
- Bernie Ford
Holy Name of Jesus Parish Rep
- Maria Marciulionis
St. Therese Parish Rep
- Margee McCarty
St. Michael Parish Rep
- Laura Reamer
Church of the Resurrection Rep

- Jeni Seidel
St. Anne Parish Rep
- Claire Meney
St. Mary Parish Rep
- Ann Wittwer
St. Matthew Parish Rep
- Jeff Gulan
President
- Amy Mettlach
Director of Instruction
- Sarah Keene
Director of Advancement
- Samantha Nevienski
Human Resources Manager & Controller
- Thomas Reichenbacher
Diocesan Superintendent of Catholic Schools

Finance Committee

- Gary France
- Jeff Gulan
- Sarah Keene
- Ron Klimisch
- Chris Pfender
- Tanya Riehle
- Rick Svennes

Athletic Committee

- Joe Ackermann
- Sean & Lisa Bennett
- Paula Damask
- Carl Fech
- Scott Fitzgerald
- Randy Gabriel
- Corey Heinz
- Tina Meyer
- Rod & Suzette Samuels
- Rob Wulf
- Krista Zubke

• Our Sincerest Gratitude

Newman Catholic Schools extends our sincere gratitude and appreciation to the many individuals who contribute of their time and talent throughout the year. As a nonprofit organization, volunteerism is essential to the system's success. Whether it be in the schools, at a game, sitting on a committee, or helping with events, every hour spent volunteering is truly a blessing which directly supports the success of our students.

An unfortunate side effect of the 2020-2021 school year was that fewer individuals could be in the buildings and at games so less volunteer hours were needed, but please know that the system is no less grateful. Those that could and did volunteer were necessary to ensure the students and teachers felt your support during a difficult time.

As we look towards a new school year, we are grateful that we can again welcome volunteers into the buildings and to help with activities and events. The system has felt the loss of community this past year and look forward to coming together yet again. Whether an alumni, student, parent, teacher, staff member, or supporter, we are all on this journey together. We come together in Christ's love. We are one...We Are Newman!





Newman Catholic Schools
Advancement Office
1130 W. Bridge St
Wausau, WI 54401



Non-Profit Org.
U.S. Postage
PAID
Permit No. 648
Wausau, WI



St. Michael
615 Stark Street, Wausau
715-848-0206

Licensed Child Care
Preschool, 4K



St. Therese
112 W. Kort Street, Schofield
715-355-5254

Licensed Child Care, 4K



St. Anne
604 N. 6th Avenue, Wausau
715-845-5754

Kindergarten - Gr. 5



St. Mark
602 Military Road, Rothschild
715-359-9662

Kindergarten - Gr. 5
Preschool, 4K



**Newman Catholic Middle &
High School**
1130 W. Bridge Street, Wausau
715-845-8274

Grades 6 – 12