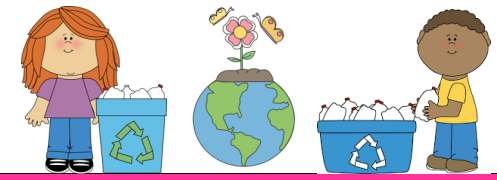


# APRIL 2021

## SAYREVILLE SCHOOL DISTRICT CALENDAR

### NOTICE FOR SCHOOL CLOSING

Delayed opening, early dismissal or cancellations due to inclement weather will be made via:  
Cable TV Channel 22, News 12 News Jersey,  
Facebook, Twitter or at [www.sayrevillek12.net](http://www.sayrevillek12.net)



Mon	Tue	Wed	Thu	Fri
			1 Pre-K - Pajama Day/Spring Parties Arl - School Spirit Day - Wear blue 	2  <b>SCHOOL CLOSED SPRING BREAK</b>
5 <b>SCHOOL CLOSED SPRING BREAK</b> 	6 <b>SCHOOL CLOSED SPRING BREAK</b>	7  <b>SCHOOL CLOSED SPRING BREAK</b>	8 <b>SCHOOL CLOSED SPRING BREAK</b> 	9  <b>SCHOOL CLOSED SPRING BREAK</b>
12 Arl - PTO Meeting virtual 7:00pm MS - Spring Bomber Sale begins Wil - Teacher Appreciation Flower Gram Sales begins 	13 Pre-K PTO Meeting virtual 7:00pm 	14 SUES - PTO Meeting virtual 7:00pm 	15 Tru - PTO Meeting virtual 7:00pm 	16 Wil - School Spirit-Wear PJs SUES - School Spirit - Decades Day MS - School Store open <hr/> 18-Sun-MS- Apparel pick up 6pm-9pm
19 Tru - Outside Book Fair 	20 Tru - Outside Book Fair  <b>Board of Education Meeting 7:30 pm - SWMHS</b>	21 Tru - Outside Book Fair Eis - PTO Meeting virtual 7:00pm 	22 Tru - Outside Book Fair & School Pictures  <b>Report Cards Issued-Grades 6-12</b>	23 Tru - Outside Book Fair & Rainforest Assembly Wil - Teacher Appreciation Flower Gram Sales ends SUES - Photo Re-Take Day MS - Spring Bomber Sale ends & last day to order 8th Grade Yearbooks 
26 SUES - Scholastic Book Fair 	27 Wil - PTO Meeting virtual 7:00pm SUES - Scholastic Book Fair MS - Apparel pick up 2pm-5pm	28 SUES - Scholastic Book Fair 	29 Tru - Applebees Proceeds Night SUES - Scholastic Book Fair 	30 Arl - Puzzle Piece Tree "We All Fit Together" Wil - Pride Day-Wear school colors or gear. SUES - Scholastic Book Fair MS - School Store open & 8th Grade T-shirt sale begins 