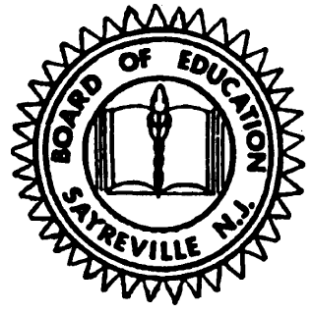


# HEAD OF THE CLASS

*The Monthly Newsletter of the Sayreville Board of Education*



Volume 25, Issue 8

April 2019

The Sayreville Board of Education congratulates the following students and staff who are at the

## **Head of the Class**

### **EISENHOWER & TRUMAN ELEMENTARY SCHOOLS**

We would like to thank the Eisenhower and Truman Elementary Schools, who participated in the American Heart Association's Kids Heart Challenge (formerly known as Jump Rope for Heart). Eisenhower students raised \$4,830 and Truman students raised \$12,580 for an incredible donation to the American Heart Association of \$17,410. We are so proud of our staff and students for hosting this event!

### **EMMA L. ARLETH PTO SAYREVILLE MIDDLE SCHOOL STUDENT COUNCIL**

On February 8, 2019, the Arleth PTO hosted a Science Night for the students and parents of the school. Over 150 people attended this fun and educational event. Students visited different stations watching various experiments and participating in hands-on activities. We would like to thank all of the Sayreville Middle Student Council students who helped run the various stations. The highlight of the night was an inflatable planetarium where students learned about different stars and constellations that they see in the night sky. Thanks to the Arleth PTO for helping to make this possible!

### **COACH JAMES ZOLLA**

Congratulations to Coach Zolla who was recently named GMC White Division Bowling Coach of the Year.

### **COACH MARCUS IVY**

Congratulations to Coach Ivy who was named GMC White Division and District 17 Wrestling Coach of the Year.

### **SWMHS WRESTLING TEAM**

Congratulations on winning the GMC White Division Championship!

### **SWMHS GIRLS WINTER TRACK**

Congratulations on winning the GMC White Division Championship!

### **SWMHS BOYS WINTER TRACK**

Congratulations on winning the GMC White Division Championship!

**SOPHY CASTRO  
HOPE CLEMENS  
ELLA KUCHTA  
TISHA MADHOK  
ANGELA PISTILLI  
MAKENZIE SMITH  
RAIGAN STOKES-CARTER**

Congratulations to these Sayreville War Memorial High School (SWMHS) art students who have artwork on display at the George Street Playhouse in New Brunswick. They are part of a group exhibition sponsored by the Art Educators of New Jersey. Sophy Castro's submission was chosen for the official flyer.

### **MS. MOJZSIS ADVANCED ART CLASS**

Congratulations to the students in Ms. Mojzsis' Advanced Art Class at SWMHS who created prints of moths that will be included in two art galleries in Australia. The Moth Migration Project is a collaborative exhibition that will be on display at the Bundaberg Regional and Gympie Regional Galleries in May.

**MRS. BARBARA COYLE  
MRS. APRIL MAGISTRO**

Commendations and Congratulations go to Mrs. Barbara Coyle, ASI Teacher at the Samsel Upper Elementary School and Mrs. April Magistro, ASI Teacher at the Wilson Elementary School, who were recently chosen by the New Jersey Department of Education (NJDOE) to be 2018 Exemplary Elementary Teachers. According to the NJDOE, they were selected because of their exceptional teaching and leadership abilities, as well as for having such a positive impact on students, colleagues, and the school community.

### **BOARD OF EDUCATION BUSINESS OFFICE MS. ERIN HILL**

Congratulations on yet another successful audit. Thank you for your efforts for ensuring proper controllership of district funds and resources.

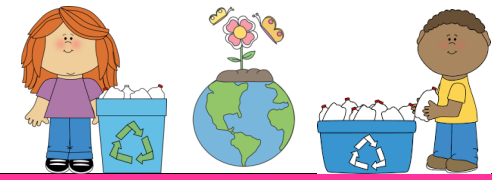


# APRIL 2019

## SAYREVILLE SCHOOL DISTRICT CALENDAR

### NOTICE FOR SCHOOL CLOSING

Delayed opening, early dismissal or cancellations due to inclement weather will be made via:  
Cable TV Channel 22, News 12 News Jersey,  
Facebook, Twitter or at [www.sayrevillek12.net](http://www.sayrevillek12.net)



Mon	Tue	Wed	Thu	Fri
<p>1 Arl - PTO Meeting 7:00pm Eis - Autism Awareness Coins 4 Kids Wil - Five Below fundraiser begins SUES - NJ Devils Fundraising Night</p> 	<p>2 SUES - Disabilities Awareness Week</p> <p>April is... <b>Autism</b> Awareness Month</p> 	<p>3 Eis - PTO Meeting 6:45pm Wil - School Store SUES - Disabilities Awareness Week</p> 	<p>4 Wil - Spring Pictures SUES - Disabilities Awareness Week</p> 	<p>5 Wil - Food Drive ends SUES - Disabilities Awareness Week &amp; Designer Bag Bingo/Tricky Tray 6:00pm</p>
<p>8 Wil - Kindergarten Rocks Show 7:00pm</p> 	<p>9 Eis - Willabees 3:30pm SUES - Texas Roadhouse Proceeds Night SMS - Spring Bomber Sale begins</p> <p><b>Board of Education Meeting 7:30 pm - SWMHS</b></p>	<p>10 SUES - PTO Meeting 6:30pm HS - NHS Induction Ceremony</p> 	<p>11 Arl - Principal For a Day Tru - Spring Pictures &amp; PTO Meeting 7:00pm Wil - Willabees 3:30pm SUES - ASI Family Literacy Night SMS - Community Service Meeting 3:00pm HS - Mr. Sayreville</p> 	<p>12 Project Before - Egg Hunt &amp; Class Parties Wil - Pajama Day SUES - School Store &amp; POAC assembly for 4th graders</p> 
<p>15</p>  <p><b>SCHOOL CLOSED SPRING BREAK</b></p>	<p>16</p>  <p><b>SCHOOL CLOSED SPRING BREAK</b></p>	<p>17 Eis - Chuck E Cheese proceeds night</p> <p><b>SCHOOL CLOSED SPRING BREAK</b></p>	<p>18</p>  <p><b>SCHOOL CLOSED SPRING BREAK</b></p>	<p>19</p> <p><b>SCHOOL CLOSED SPRING BREAK</b> 21-Sun - Wil - Five Below fundraiser ends</p>
<p>22</p>  <p><b>SCHOOL CLOSED SPRING BREAK</b></p>	<p>23 Wil - PTO Meeting 7:00pm SMS - Spring Bomber Sale ends</p> 	<p>24 Pre-K - PTO Meeting 7:00pm @SUES Wil - School Store SUES - School Spirit - Mustache Day &amp; Willabees 2:45pm SMS - 8th Grade T-shirt Sale begins</p> <p><b>Report Cards Issued Grades 6-12</b></p>	<p>25 Eis - FFN - Carnival 7:00pm SUES - Holocaust Presentations</p>  <p><b>TAKE YOUR CHILD TO WORK DAY</b></p>	<p>26 ☆☆☆ <b>HS-Junior Prom</b> ☆☆☆ Pre-K - Pinot's Palette fundraiser @ SUES Tru - Science Fair 6:30pm Wil - Wilson Pride Day wear school colors or gear SUES - Character Ed Luncheon SMS - School Store</p> 
<p>29 SUES - TGIF Proceeds Night SMS - 8th Grade Dinner Dance Tickets on sale during lunch</p>	<p>30 SMS - 8th Grade Dinner Dance Tickets on sale during lunch</p>	<p><b>Choose KINDNESS.</b></p> 		<p>27 Sat -Arl-Autism Awareness Fair 11am-4pm Wil - Spring Clothing Drive 9am-1pm</p> 

PLEASE CONSULT YOUR SCHOOL WEBSITE FOR INFORMATION ON NJSLA EXAM DATES