



TRAILBLAZER NEWS

December 2022

MARCUS WHITMAN MIDDLE SCHOOL



When the weather outside is frightful...

Each year we remind families of how we communicate during inclement weather. Forecasting the weather for school closures is not an easy task. Our community is large enough that snow may accumulate in one area and not in other areas. South Kitsap School District officials put a great deal of effort and thought into determining whether to keep schools open, start late, or close schools due to inclement weather conditions. Of course, parents make the final decision when sending students to school during inclement weather.

Take Action! To ensure you are notified of school delays, closures, or other emergencies, please make sure you are signed up for the following:

ParentSquare

SKSD uses ParentSquare to send out all alerts via email, SMS, and Voice. ParentSquare is a simple and unified school-to-home communication platform—to reach and engage every parent, helping to ensure all parents have the opportunity to actively participate in their children's education. Instructions on signing up for ParentSquare can be found on the next page or by visiting our website.

Follow Us

Facebook @ SouthKitsapSchoolDistrict

Twitter @ SouthKitsapSD @ SK_Bus_Riders

District Website: www.skschools.org

When are decisions made?

School district officials do their best to make the decision by no later than 5:30 a.m. Sometimes, conditions are stable enough that the district is able to make the announcement the night before.

No News is Good News

SKSD will report all school schedule changes to the local news media and post these changes to the home page of the district website. If no reports have been made, school will begin at regularly scheduled times.

When will my bus come?

Bus routes follow the same schedule as our schools. For example, if schools are delayed two hours, bus riders can expect the bus to come approximately two hours late. On the occasion when roads are not passable, the Transportation Department may use alternate stops.



Thank you to the Suquamish Tribal Council for granting the 7th grade ELA/SS Dept. with \$2600. This money will go to future field trips and other resources to help our students learn more about the great state of Washington.

We appreciate your support!



Thank you Mr. Matt (Haver) SK Native American | Alaska Native Support Specialist, for coming to visit Mrs. Hulbert and Ms. Walls Social Studies Class. It was great to have you during Native American Heritage Month!



LOST AND FOUND IS OVERFLOWING

PLEASE HAVE YOUR STUDENT

CHECK FOR THEIR MISSING SWEATSHIRTS, JACKETS, PANTS, SHIRTS, LUNCHBOXES, WATERBOTTLES, ETC.

Winter Sports 2

Girls Basketball

Girls' basketball tryouts will start **Wednesday January 11**. Players are **required to have the Final Forms registration complete, (which includes a physical)** in order to tryout. Please schedule a physical (if needed) and register now to be ready in January!

Wrestling

Wrestling will start **Wednesday January 11**. Players are **required to have the Final Forms registration complete, (which includes a physical)** in order to tryout. Please schedule a physical (if needed) and register now to be ready in January!



Marcus Whitman is forming a PTO! If you are interested in joining you may contact Brenda Walls at Walls@skschools.org or Andi at andi6977@gmail.com. Meetings will be



held here every 3rd Tuesday evening from 6:15-7:15pm. Next meeting will be December 20th.

Marcus Whitman PTO
Popcorn
Friday!

Bring 50cents to lunch and get some popcorn! Starting Dec 2nd!



MWMS Counseling Department

Your MWMS Counselors:

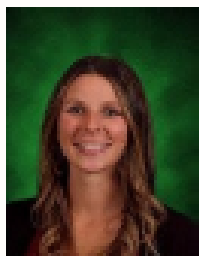


Zack Fogel

Students with last
names A-K

fogel@skschools.org

360-874-6164



Haley Mishko

Students with last
names L-Z

mishkoh@skschools.org

360-874-6166

Thank you to our PTO!

Thank you so much to our PTO and the MWMS families who donated to the clothing closet drive this November! We are currently stocked up to support students in need of clothing and basic hygiene items. We appreciate you supporting your MWMS community!

Could your student use some support with these items or school supplies? Have them visit their counselor and we can get them set up.

Food Support

Could your family benefit from extra food support? If so, please fill out the below google form (or have your student grab a paper copy from their counselor) to sign them up for the Backpack For Kids program. BPFK sends students home with a bag of easy to prepare meals/snacks every Friday!

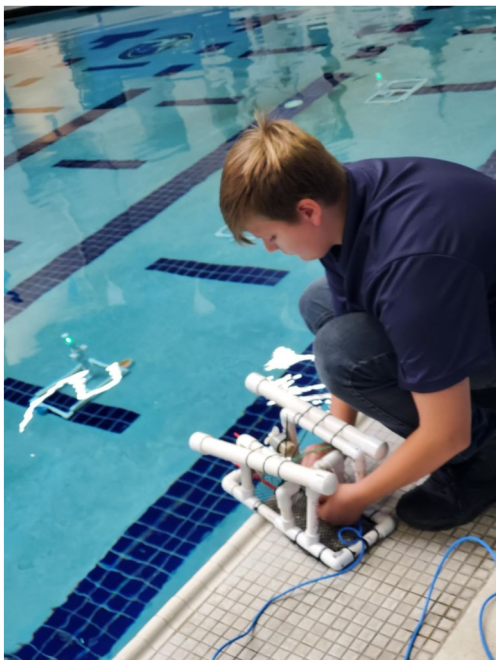
<https://forms.gle/xDpUjVdMRIsUWhYe>



PRE-ENGINEERING CLASS

Mrs. Garcia's Pre-Engineering class has been working on ROVs (remote operated vehicles) with PSNS since September. The students learned how to solder and wire their ROVs. They had to follow instructions precisely and work collaboratively for their ROV to work properly. They tested their ROVs buoyancy to ensure they were neutral. We took our ROVs to Olympic High School Pool, where they performed underwater task, mimicking bomb disposal, trash removal, and obstacle courses. The students had a blast and learned real world experience on how ROV operate and what they are used for.

Thank you PSNS for your support!





MORE
PRE-
ENGINEERING
PICTURES





Ask your family, what their favorite food to eat is during cold weather months.



Talk about your favorite holiday traditions and/or create a new one this month.



Drink some hot chocolate while completing a game or puzzle together as a family.



Do some yard or neighborhood clean up and talk about the importance of winterizing your home.



December Family Dares

Keep Your Child On Track in Middle School

Even as children grow older and more independent, families play a key role in making sure students access learning opportunities and understand why attendance is so important for success in school and on the job.

DID YOU KNOW?

- Students should miss no more than 9 days of school each year to stay engaged, successful and on track to graduation.
- Frequent absences can be a sign that a student is losing interest in school, struggling with school work, dealing with a bully or facing some other difficulty.
- By 6th grade, absenteeism is one of three signs that a student may drop out of high school.
- By 9th grade, attendance is a better predictor of graduation rates than 8th grade test scores.
- Missing 10%, or 2 days a month, over the course of the school year, can affect a student's academic success.

WHAT YOU CAN DO

Make school attendance a priority

- Talk about the importance of showing up to school every day.
- Help your children maintain daily routines, such as finishing homework and getting a good night's sleep.
- Try not to schedule dental and non-Covid-19 related medical appointments during the school day.
- If your children must stay home because they are sick, make sure they have asked teachers for resources and materials to make up for the missed learning time in the classroom.

Help your teen stay engaged

- Find out if your children feel engaged by their classes, and feel safe from bullies and other threats.
- Make sure your children are not missing class because of challenges with behavioral issues or school discipline policies. If any of these are problems, contact school and work with them to find a solution.
- Monitor your child's academic progress and seek help from teachers or tutors when necessary. Make sure teachers know how to contact you.
- Stay on top of your child's social contacts. Peer pressure can lead to skipping school, while students without many friends can feel isolated.
- Encourage your child to join meaningful after-school activities, including sports and clubs.
- Notice and support your children if they are showing signs of anxiety.

Communicate with the school

If your student is going to be absent please call the Attendance Office (360-874-6170), e-mail the Attendance Specialist (meddles@skschools.org), or enter the absence on skyward. Thank you.



First and hopefully annual PTO Trunk or Treat

We want to thank everyone who participated and the Marcus Whitman Parent Teacher Organization for planning this fun event for our students..



Family Support Site

Check out the parent support site! This site will be a place you can get upcoming information and answers throughout the year.

<https://sites.google.com/skschools.org/mwmsremote/home>

Parent Supervision Tool for the Internet

<https://docs.google.com/document/d/1jz02XpVLJ5iGF5stn9RMou8cqm64sdjK9Ae62GXQfY0/edit>



Volunteer Opportunities for Fall 2022

Your student may become more independent at the Middle School level, however, there are still volunteer opportunities such as:

Tutoring students/ Assisting the teacher

Band/Choir/Orchestra Assistant

Help with Student Events

Fieldtrip Chaperones

Teacher Appreciation events

Mrs. Sauby would like some helpers/tutors during her 4th period with 6th grade Science. (11:45 – 12:45)

Volunteer applications are available in the Main office and are required to be in place before volunteering. When you stop by, please bring current Drivers License for ID and proof of COVID vaccination. (Exemptions that have been granted will remain in place and new requests will be processed through Jackie Stewart at SKSD Human Resources.)

Mask use is by choice.

Point of contact at MWMS is Ruth Hodges at Munchbac@skschools.org (360) 874-6168 or

At the District level, Amy Miller at Millera@skschools.org (360) 874-7005.



Check out the MW math website!

What is new in math classes this month?

Find math updates for the month of December by clicking on the link for your student's grade level. If you have any questions about your student's progress, email or call their classroom teacher.

<https://sites.google.com/skschools.org/mw-math/6th-grade>

<https://sites.google.com/skschools.org/mw-math/7th-grade>

<https://sites.google.com/skschools.org/mw-math/8th-grade>

Emily Fogel

Learning Support Specialist - Math



STAR Test - MATH and ELA

Students will be taking their benchmark STAR test this month in their Math and ELA classes. 6th-8th grade ELA on 12/6, 6th-7th grade math on 12/8, and 8th grade math on 12/19. If you have any questions about the dates, please send a message to your student's teacher.

Student scores are used in multiple ways:

to place students in intervention and advanced classes;

for teachers to build in reteaching and extending when needed;

for the school to know what supports students need;

to set goals to grow as mathematicians and readers.

Your student's Math and ELA teacher will introduce the assessment with an instructional video to explain the assessment to your student. Thank you for encouraging your student to try their best on the assessment. The tests are multiple choice and computer adaptive and should take students approximately 25 minutes a piece.



The Chanime Club (Chess + Anime) meets Thursdays, 2:45-3:30 PM, in Room 214 Mr. O'Loughlin is the Advisor. The Chanime Club is open to all Marcus Whitman students who want to learn and play chess and/or want to draw Anime.

The Allies GSA Club: Are you looking for a safe and supportive place to connect and socialize with fellow LGBTQ+ peers and allies? If so, Allies GSA club is for you! Students in the club work together to provide inclusive community experiences for all at Marcus Whitman! Club will meet every Thursday in room 203, 2:50-3:50. Grab a permission slip from Mrs. Bush or Ms. Williams.

The Game Club will begin meeting on Mondays in the Library from 3-4pm. If you would like to play board games, cards or D&D, come and participate! Permission slips for this club are available in the main office. Deputy Brown Advisor

Weight Lifting Club has started. They will be meeting Tuesday and Thursday in the Weight Room. Time is from 2:50 pm to 3:50. Permission slips are at the main office. Advisors Mr. Zappey and Mrs Marshall

STEM Club will begin Thursday, Oct 6th and will continue every other Thursday. STEM Club will meet in Room 112 (Woodshop) and go from 2:45—3:45. Permission slips are at the main office.



Girls Soccer Game Schedule

All games start at 3:30 pm

DATE	OPPONENT	PLACE
Dec 5	Hawkins	Hawkins
Dec 7	Curtis	SKHS
Dec 9	Cedar	SKHS
Dec 12	Sedgwick	SKHS
Dec 14	Mt. View	Mt. View

Boys Basketball Game Schedule

All games start at 3:30 pm

Date	Opponent	Place
Dec 1	Mt. View	Marcus
Dec 5	Hawkins	Marcus
Dec 7	Curtis	Curtis
Dec 9	Cedar	Cedar
Dec 12	Sedgwick	Marcus
Dec 14	Mt. View	Mt. View

Boys Intramural Basketball Game Schedule

All games start at 3:30 pm

Date	Opponent	Place
Dec 2	Cedar	Cedar
Dec 9	Sedgwick	Sedgwick

The South Kitsap School District provides equal educational and employment opportunity without regard to race, creed, religion, color, national origin, age, honorably-discharged veteran or military status, sex, sexual orientation – including gender expression or identity, marital status, or the presence of any sensory, mental, or physical disability, the use of a trained dog guide or service animal by a person with a disability. Equal access to activities, facilities and program is provided to the Boy Scouts of America and other designated youth groups. District procedure complies with all applicable state and federal laws.

The Title IX Officer and Section 504 Coordinator with the responsibility for monitoring, auditing and ensuring compliance with this policy are:

Compliance/ADA/Title IX Coordinator:
Will Sarett,
Executive Director of Human Resources
2689 Hoover Avenue SE, Port Orchard, WA 98366
360-874-7071
sarett@skschools.org

Section 504 Coordinator:
Paul Hulbert,
Principal
2689 Hoover Avenue SE, Port Orchard, WA
360-443-3610,
hulbert@skschools.org