



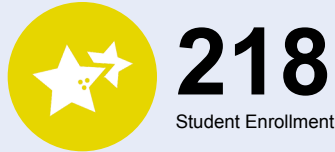
OREGON AT-A-GLANCE SCHOOL PROFILE

Riverdale High School

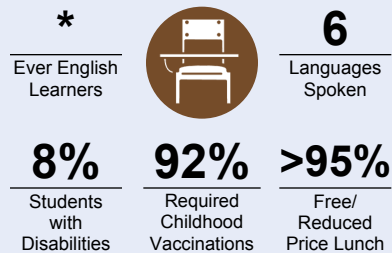
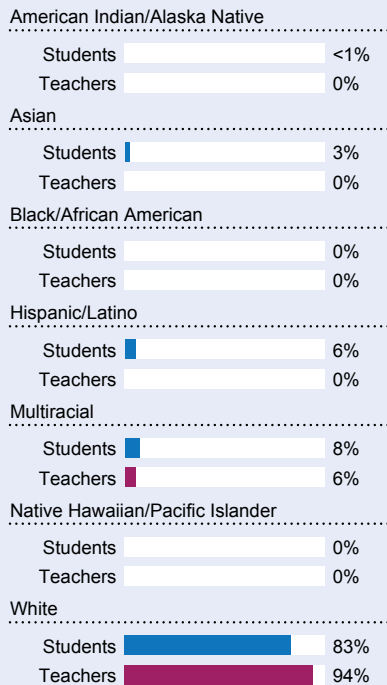


PRINCIPAL: Paula Robinson | GRADES: 9-12 | 9727 SW Terwilliger Blvd, Portland 97219 | 503-262-4844

Students We Serve



DEMOGRAPHICS



*<10 students or data unavailable

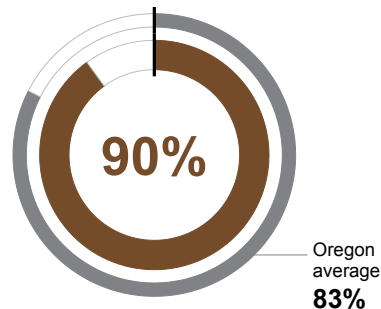
Special Note

The At-A-Glance School and District profiles tell a story about Oregon's schools and districts. The story is harder to tell this year as the COVID-19 pandemic significantly impacted our schools and the data we collect. As a result, statewide assessment and attendance data cannot be compared to prior years and are not shown here. We have included links to our website where you can view the 2020-21 statewide assessment and attendance data and read a detailed description of how these data were impacted. We're thankful for your partnership as we focus on care, connection and the creation of safe, inclusive and supportive learning environments.

Academic Success

ON-TIME GRADUATION

Students earning a diploma within four years. Cohort includes students who were first-time ninth graders in 2016-17 graduating in 2019-20.



School Environment

REGULAR ATTENDERS

Students who attended more than 90% of their enrolled school days.

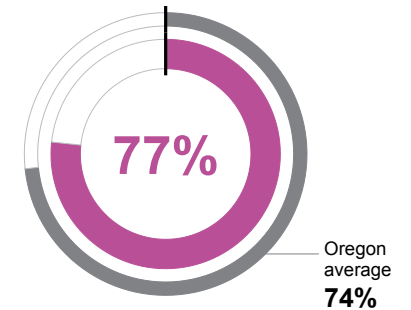
For 2020-21 Regular Attenders data please visit:

www.oregon.gov/ode/schools-and-districts/reportcards/reportcards/Pages/Regular-Attenders-2021.aspx

Academic Progress

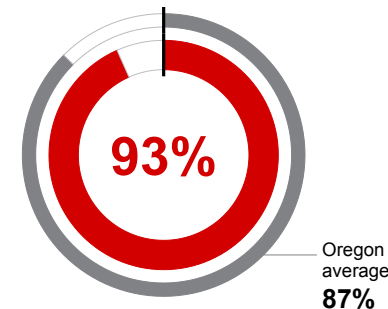
ON-TRACK TO GRADUATE

Students earning one-quarter of graduation credits in their 9th grade year.



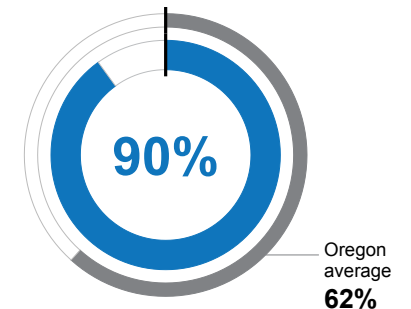
FIVE-YEAR COMPLETION

Students earning a high school diploma or GED within five years.



COLLEGE GOING

Students enrolling in a two or four year college within 16 months of completing high school in 2017-18. Data from the National Student Clearinghouse.



School Goals

RHS is working to increase inclusivity and fostering an environment that promotes respect for all members of the learning community by utilizing PD time, student advisory, and parent meetings to build upon responsive practices that put people first. Our aim is to provide an environment where staff, students, and parents thrive both academically and emotionally. This environment will provide the ability for students to be resilient, persistent, and take academic risks.

State Goals

The Oregon Department of Education is partnering with school districts and local communities to ensure a 90% on-time, four year graduation rate by 2025. To progress toward this goal, the state will prioritize efforts to improve attendance, provide a well-rounded education, invest in implementing culturally responsive practices, and promote continuous improvement to close opportunity and achievement gaps for historically and currently underserved students.

Safe & Welcoming Environment

School safety committees actively plan to increase and review security measures that keep students safe. We now use a buzz-in entry system at a single point of entry. All other entries to the school remain locked during the school day. This system brings added security to our building. We also continue to use the following safety procedures: a multi-agency threat assessment team, routine lock down and lock out drills, safety tip lines, connecting students with mental health services, staff training in safety strategies, and we partnership with our community resource officers.



OREGON AT-A-GLANCE SCHOOL PROFILE CONTINUED

Riverdale High School



2020-21

Outcomes

Our Staff (rounded FTE)



14

Teachers



0

Educational assistants



1

Counselors/
Psychologists



95%

Average teacher retention rate



87%

% of licensed teachers with more than 3 years of experience



No

Same principal in the last 3 years

| | REGULAR ATTENDERS | ON-TRACK TO GRADUATE | ON-TIME GRADUATION |
|----------------------------------|-------------------|----------------------------------|----------------------------------|
| American Indian/Alaska Native | | <10 students or data unavailable | <10 students or data unavailable |
| Asian | | <10 students or data unavailable | <10 students or data unavailable |
| Black/African American | | <10 students or data unavailable | <10 students or data unavailable |
| Hispanic/Latino | | <10 students or data unavailable | <10 students or data unavailable |
| Multiracial | | <10 students or data unavailable | <10 students or data unavailable |
| Native Hawaiian/Pacific Islander | | <10 students or data unavailable | <10 students or data unavailable |
| White | | 81% | 89% |
| Free/Reduced Price Lunch | | <10 students or data unavailable | <10 students or data unavailable |
| Ever English Learner | | <10 students or data unavailable | <10 students or data unavailable |
| Students with Disabilities | | <10 students or data unavailable | <10 students or data unavailable |
| Migrant | | <10 students or data unavailable | <10 students or data unavailable |
| Homeless | | <10 students or data unavailable | <10 students or data unavailable |
| Talented and Gifted | | <10 students or data unavailable | <10 students or data unavailable |
| Female | | 82% | 89% |
| Male | | 72% | 91% |
| Non-Binary | | <10 students or data unavailable | Coming in 2022-23 |

About Our School

ADVANCED COURSEWORK

RHS offers dual-enrollment courses for college credit with Western Oregon University & Portland State University. In our small high school, last year 116 students earned a total of 464 college credits.

- We offer the opportunity for students to take AP Exams at their request.

- Students are provided the opportunity to engage in an Honors contract and earn Honors credit in every core class and most electives.

- Students have the opportunity to participate in Templeton Scholars with Lewis and Clark College. The Riverdale Diploma requires 4 credits more than the Oregon Diploma, 8 additional courses to explore and master.

CAREER & TECHNICAL EDUCATION

In 2018-19 RHS became a CTE certified school. Our students have the option to enroll in a variety of career and technical courses including:

- Tech Apps
- 3D Modeling
- Intro to Robotics & Robotics
- Game Design
- Programming Apps for iPhone
- Web Design
- Extreme Ventures
- Art Portfolio
- Advanced Experimental Science
- Careers in Wellness
- Consumer Science

EXTRACURRICULAR ACTIVITIES

RHS offers several academic focused extracurricular activities:

- Mock Trial
- Model UN
- National Honors Society
- Oregon Battle of the Books
- Robotics
- Science Bowl

No-Cut Athletics and Arts:

- OSAA Athletics: Girls and Boys Soccer, Girls Volleyball, Girls and Boys Basketball, Girls and Boys Track, Girls and Boys Tennis, Girls and Boys Golf, Girls and Boys Swimming, Girls and Boys Cross Country
- 3 theater productions/year including a musical
- Student Run Organizations including but not limited to:
 - GSA
 - Drama Club
 - Young Politicians
 - Service Clubs

PARENT & COMMUNITY ENGAGEMENT

There are many opportunities for parents to volunteer in our school including:

- Front desk assistance
- Library
- Parent Teacher Club (PTC)
- Boosters
- Site Council

Parents are able to interact with the school at:

- Back to School Night
- Grade-level Parent Meetings
- College Night
- Financial Aid Nights
- New Family Orientation
- New Family Picnic
- Parent Teacher conferences each trimester
- Open House
- PTC Coffees and Book Club Meetings