



**SIERRA** ENVIRONMENTAL GROUP, INC.

July 12, 2021

Mr. Devin Huff  
Maintenance Supervisor  
**Ross Local Schools**  
3371 Hamilton-Cleves Road  
Hamilton, Ohio 45013  
(513) 633-4833

**RE: Summary of Clearance Inspection and Clearance Air Monitoring  
Administration Building – 2<sup>nd</sup> Floor South Wing  
3371 Hamilton-Cleves Road  
Hamilton, Ohio 45013  
Sierra Project Number: Ross.007**

Dear Mr. Huff:

On July 9, 2021, Mr. Chris Fath (Ohio Environmental Protection Agency Certified Asbestos Hazard Evaluation Specialist # ES543923) of Sierra Environmental Group, Inc., (Sierra) performed a clearance inspection and final clearance air monitoring services relating to the removal and clean-up of asbestos-containing wall and ceiling plaster at the above referenced location.

Before clearance air samples were collected, Sierra's on-site representative performed a comprehensive visual inspection to determine if all specified asbestos-containing materials had been removed and if the regulated work area had been satisfactorily decontaminated so as to be free of any visible dust. After it was determined that these materials were removed and the regulated work area decontaminated, clearance air samples were collected.

Five aggressive clearance samples were collected from the regulated work area in the specified area where the work was performed and analyzed in accordance with the 40 CFR Part 763 (AHERA) by Transmission Electron Microscopy (TEM). The results of these samples were reported as all below 70 Structures/mm<sup>2</sup> of air level required for clearance by this method. Sierra notified Ross Local Schools that the work area passed air clearance and that the regulated areas are clear for re-occupancy.

Enclosed are the following Sierra documents: 1) Air Sampling Record; 2) Pre-Clearance Visual Inspection form; 3) Laboratory Report; 4) Floor Plan and 5) Inspector's Certification.

Sierra appreciates this opportunity to provide Ross Local Schools with asbestos management services. If you have any questions about this report, or if Sierra can be of additional services, please call us at (513) 542-5323.

Sincerely

**SIERRA ENVIRONMENTAL GROUP, INC.**

Todd Taylor, #ES32139  
President

Attachments

(Please Print Neatly)

**HEX = hepa exhaust; CL = clearance.**

# SIERRA ENVIRONMENTAL GROUP, INC. PRE-CLEARANCE VISUAL INSPECTION

(Please Print Neatly)

Client: Ross Local Schools	Project Contact: Devin Huff	Location: 3371 Hamilton Cleves Road, Hamilton, Ohio 45013	Sierra Representative: Todd Taylor
Project #: Ross.007			
Date: 7-9-21	Time: 9:00	Contractor Foreman (Name and Company): Victor Dore, EDG	Work Area: 2nd Floor Southwing

Inspection: X First Inspection        Reinspection       

## Contractor Certification of Visual Inspection

In accordance with the asbestos abatement workplan/specifications, the Contractor hereby certifies that he has visually inspected the Work Area (all surfaces, including pipes, beams, ledges, walls, ceiling and floor, decontamination unit, sheet plastic, etc.), and has found no dust and/or debris.

Contractor's Foreman or Representative: Victor Dore (Print Name)  (Signature)

## Sierra Representative's Certification of Visual Inspection

1. No visible debris on walls and floors.
2. No visible debris between deck and beams.
3. No visible debris behind perimeter columns.
4. No visible debris on top of ducts.
5. No visible debris on hangers, rods, lights.
6. No visible debris on surfaces covered by poly.
7. No visible debris on pipes.
8. All bags of waste removed from work area.
9. All equipment clean, including underside of negative air units.
10. Negative pressure differential  $\geq 0.02$  inches of water.
11. Airless spray equipment used for encapsulation.
12. The area suitable for encapsulation.

Proceed with encapsulation:        Yes        No

Comments: NO visible Debris on floor or Surfaces.

Visual Inspection Passed

Sierra Representative:

Todd Taylor  
(Print Name)

Chris Fith

(Signature)





Contact: Chuck Callahan  
Company: Sierra Environmental Group, Inc  
Address: 1051 Straight Street,  
Cincinnati, OH 45214

## REFERENCE DATA

---

Project / Location: Ross-007; 3371 Hamilton Cleves Rd.

PO Number: NA

ALS Work Order: 21070284

**NARRATIVE:** Analysis performed on FEI Tecnai G2 Spirit Twin TEM at 100keV equipped with EDAX Octane T Plus Silicon Drift Detector System and Z2 Analyzer. Morphology SAED, and EDXA used to determine species. All sample collection is performed outside of ALS and is the sole responsibility of client. If collection or submission deviates from any method requirement, then interpretation of the results via the method cannot be made. The analytical sensitivity (AS) for this method is based on the detection of one confirmed asbestos structure in the total area analyzed and is expressed in str/mm<sup>2</sup> and str/cc(mL)\* dependent upon the air volume (L) provided by the client. As with any measurement statistically derived uncertainty data as it impacts this method should be considered when interpreting results. Measures of individual analyst and laboratory accuracy and precision are routinely tabulated and can be made available upon request. Sample filters are archived for 30 days, and analyzed TEM grids are archived for 3 years. Results apply only to the portions of the samples analyzed. Raw data validated by analyst.

**METHOD CODE:** "AHERA" refers to samples prepared and analyzed according to EPA AHERA protocol published in 40 CFR Part 763 Appendix A subpart E. Structure sizes measured according to Yamate Level II. When possible, sufficient openings are analyzed to reach AS of <0.005 str/cc. However, samples collected with volumes <1200L may not reach AS. Therefore, a maximum of 10 openings will be analyzed regardless of AS reached. Analysis of clearance samples will be terminated upon completion of the opening containing the structure which causes the projected average concentration to exceed 70 str/mm<sup>2</sup>.

Note: AHERA regulations prohibit shipping or storage of air samples in the same container as bulk samples, analysis of filters exceeding 10% particulate loading, filters exhibiting uneven loading, or indirect preparation of overloaded filters. Samples exhibiting any prohibited conditions shall be rejected for analysis.

*\*In order to provide results in fibers/cc, the sample air volumes in Liters **must** be provided via the COC which accompanies the samples at the time of receipt by the analyzing laboratory. Reports requiring revision as a result of information missing from the original COC will incur an additional administrative fee.*

**ABBREVIATIONS:** NA=Not Applicable, ND=None Detected, AS=Analytical Sensitivity, Str=structures  
**ALS is accredited for the AHERA method through New York ELAP (Lab#11371).**

#### SAMPLE IDENTIFICATION

Client Sample ID:	4	5	6	7	8
ALS Sample ID:	21070284-04	21070284-05	21070284-06	21070284-07	21070284-08
Method Code:	AHERA	AHERA	AHERA	AHERA	AHERA
Analyst:	Pamela Hizar	Pamela Hizar	Pamela Hizar	Pamela Hizar	Pamela Hizar
Date Analyzed:	7/9/2021	7/9/2021	7/9/2021	7/9/2021	7/9/2021
Air Volume (L):	1271	1278	1259	1261	1269
Openings Analyzed:	6	6	6	6	6
Avg. Opening Area (mm <sup>2</sup> ):	0.0102	0.0102	0.0102	0.0102	0.0102
AS: str/mm <sup>2</sup> :	16.34	16.34	16.34	16.34	16.34
AS: str/cc (mL):	0.0049	0.0049	0.0050	0.0050	0.0050

#### ASBESTOS <5µm

Chrysotile:	0	0	0	0	0
Amosite:	0	0	0	0	0
Crocidolite:	0	0	0	0	0
Actinolite:	0	0	0	0	0
Tremolite:	0	0	0	0	0
Anthophyllite:	0	0	0	0	0
Total Asbestos <5µm:	0	0	0	0	0
Concentration: str/mm <sup>2</sup> :	<AS	<AS	<AS	<AS	<AS
Concentration: str/cc(mL):	<AS	<AS	<AS	<AS	<AS

#### ASBESTOS ≥5µm

Chrysotile:	0	0	0	0	0
Amosite:	0	0	0	0	0
Crocidolite:	0	0	0	0	0
Actinolite:	0	0	0	0	0
Tremolite:	0	0	0	0	0
Anthophyllite:	0	0	0	0	0
Total Asbestos ≥5µm:	0	0	0	0	0
Concentration: str/mm <sup>2</sup> :	<AS	<AS	<AS	<AS	<AS
Concentration: str/cc(mL):	<AS	<AS	<AS	<AS	<AS

#### TOTAL ASBESTOS

Total Asbestos Count:	0	0	0	0	0
Concentration: str/mm <sup>2</sup> :	<AS	<AS	<AS	<AS	<AS
Concentration: str/cc(mL):	<AS	<AS	<AS	<AS	<AS
Sample Comments:	NA	NA	NA	NA	NA

#### AVERAGE ASBESTOS CONCENTRATION\*

Concentration: str/mm <sup>2</sup> :	<AS
Concentration: str/cc(mL):	<AS

\*Average asbestos concentration applies ONLY to TEM AHERA clearance sets of 5 inside samples.

#### NOTES

Per client instructions blanks labeled 1, 2, and 3 were not analyzed.  
A few non-asbestos fibers identified as gypsum (calcium sulfate) were detected.







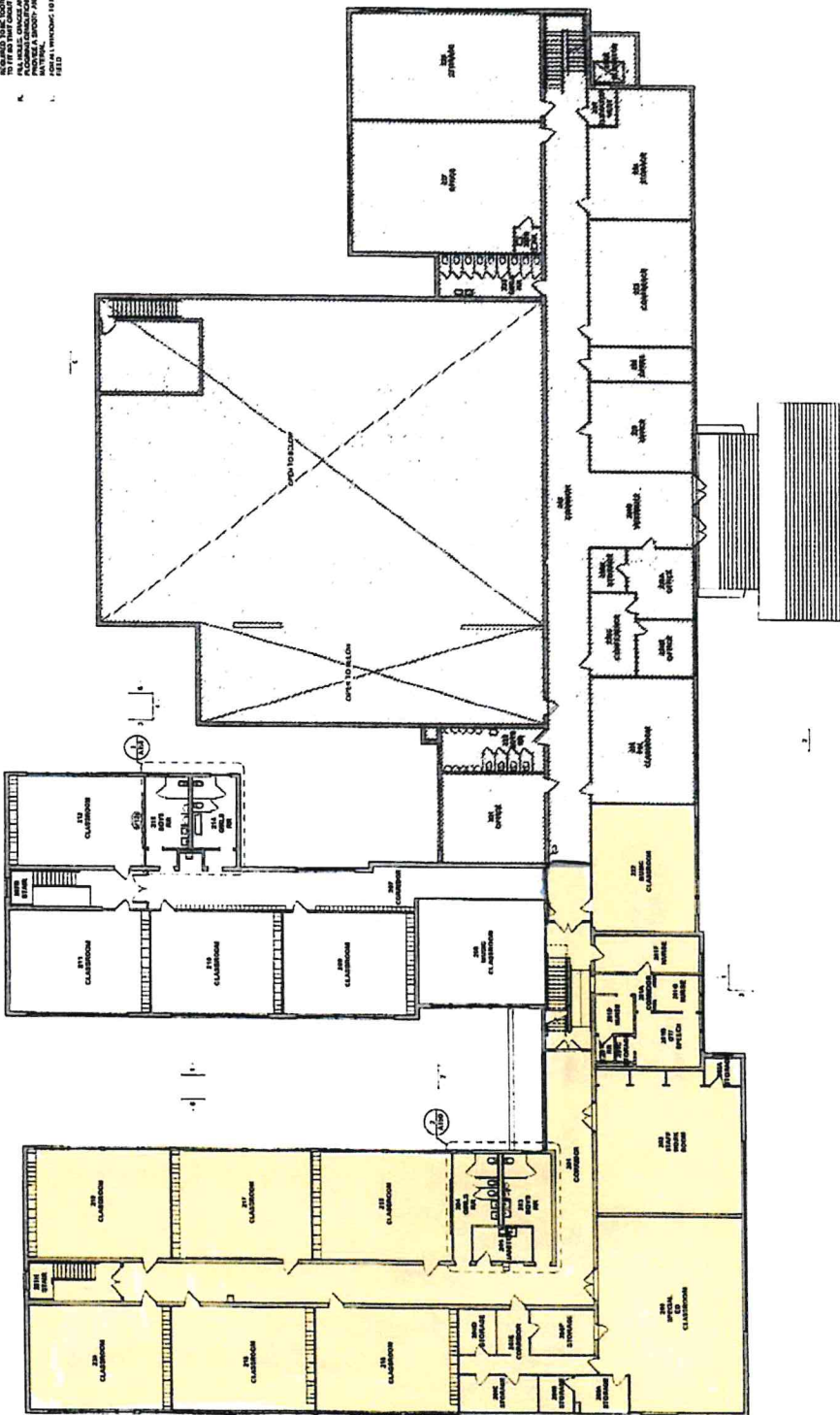
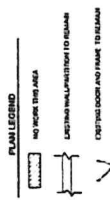
**SHP**

**ROSS LOCAL SCHOOL DISTRICT**  
ADMINISTRATION OFFICE ALTERATIONS  
3371 HAMILTON CLEVELAND RD HAMILTON, OH 45013

DATE	10/1/2018
BY	ARCHITECT
PROJECT NO.	18-001
CLIENT	ROSS LOCAL SCHOOL DISTRICT
PROJECT NAME	ADMINISTRATION OFFICE ALTERATIONS
PROJECT ADDRESS	3371 HAMILTON CLEVELAND RD HAMILTON, OH 45013
PROJECT TYPE	SCHOOL
PROJECT PHASE	CONCEPT
PROJECT STATUS	IN PROGRESS
PROJECT BUDGET	\$1,000,000
PROJECT SCHEDULE	12 MONTHS
PROJECT TEAM	ARCHITECT, ENGINEER, PLUMBER, ELECTRICIAN
PROJECT CONTACT	JOHN DOE, PROJECT MANAGER
PROJECT PHONE	(513) 555-1234
PROJECT EMAIL	john.doe@rosslocal.edu
PROJECT WEBSITE	www.rosslocal.edu
PROJECT SOCIAL MEDIA	facebook.com/rosslocal, twitter.com/rosslocal
PROJECT GALLERY	www.rosslocal.edu/gallery
PROJECT DOCUMENTS	www.rosslocal.edu/documents
PROJECT MEETINGS	www.rosslocal.edu/meetings
PROJECT REPORTS	www.rosslocal.edu/reports
PROJECT EVALUATION	www.rosslocal.edu/evaluation
PROJECT IMPACT	www.rosslocal.edu/impact
PROJECT LEGACY	www.rosslocal.edu/legacy
PROJECT FUTURE	www.rosslocal.edu/future
PROJECT HISTORY	www.rosslocal.edu/history
PROJECT PRESENT	www.rosslocal.edu/present
PROJECT POTENTIAL	www.rosslocal.edu/potential
PROJECT REALITY	www.rosslocal.edu/reality
PROJECT DREAMS	www.rosslocal.edu/dreams
PROJECT VISIONS	www.rosslocal.edu/visions
PROJECT MISSIONS	www.rosslocal.edu/missions
PROJECT VALUES	www.rosslocal.edu/values
PROJECT BELIEFS	www.rosslocal.edu/beliefs
PROJECT PRINCIPLES	www.rosslocal.edu/principles
PROJECT STANDARDS	www.rosslocal.edu/standards
PROJECT ETHICS	www.rosslocal.edu/ethics
PROJECT LAWS	www.rosslocal.edu/laws
PROJECT REGULATIONS	www.rosslocal.edu/regulations
PROJECT POLICIES	www.rosslocal.edu/policies
PROJECT PROCEDURES	www.rosslocal.edu/procedures
PROJECT SYSTEMS	www.rosslocal.edu/systems
PROJECT TOOLS	www.rosslocal.edu/tools
PROJECT METHODS	www.rosslocal.edu/methods
PROJECT TECHNIQUES	www.rosslocal.edu/techniques
PROJECT STRATEGIES	www.rosslocal.edu/strategies
PROJECT TACTICS	www.rosslocal.edu/tactics
PROJECT OPERATIONS	www.rosslocal.edu/operations
PROJECT MAINTENANCE	www.rosslocal.edu/maintenance
PROJECT REPAIRS	www.rosslocal.edu/repairs
PROJECT REPLACEMENTS	www.rosslocal.edu/replacements
PROJECT RENOVATIONS	www.rosslocal.edu/renovations
PROJECT RESTORATIONS	www.rosslocal.edu/restorations
PROJECT RECONSTRUCTIONS	www.rosslocal.edu/reconstructions
PROJECT REBUILDINGS	www.rosslocal.edu/rebuildings
PROJECT REPAIRS	www.rosslocal.edu/repairs
PROJECT REPLACEMENTS	www.rosslocal.edu/replacements
PROJECT RENOVATIONS	www.rosslocal.edu/renovations
PROJECT RESTORATIONS	www.rosslocal.edu/restorations
PROJECT RECONSTRUCTIONS	www.rosslocal.edu/reconstructions
PROJECT REBUILDINGS	www.rosslocal.edu/rebuildings

**OVERALL SECOND FLOOR PLAN**  
A052

- GENERAL NOTES - FLOOR PLAN**
- 1. ALL DIMENSIONS ARE TO FACE OF MATERIAL UNLESS NOTED OTHERWISE.
  - 2. ALL PARTITIONS TYPE 45 UNLESS NOTED OTHERWISE.
  - 3. ALL PARTITIONS TYPE 45 UNLESS NOTED OTHERWISE.
  - 4. ALL PARTITIONS TYPE 45 UNLESS NOTED OTHERWISE.
  - 5. ALL PARTITIONS TYPE 45 UNLESS NOTED OTHERWISE.
  - 6. ALL PARTITIONS TYPE 45 UNLESS NOTED OTHERWISE.
  - 7. ALL PARTITIONS TYPE 45 UNLESS NOTED OTHERWISE.
  - 8. ALL PARTITIONS TYPE 45 UNLESS NOTED OTHERWISE.
  - 9. ALL PARTITIONS TYPE 45 UNLESS NOTED OTHERWISE.
  - 10. ALL PARTITIONS TYPE 45 UNLESS NOTED OTHERWISE.
  - 11. ALL PARTITIONS TYPE 45 UNLESS NOTED OTHERWISE.
  - 12. ALL PARTITIONS TYPE 45 UNLESS NOTED OTHERWISE.
  - 13. ALL PARTITIONS TYPE 45 UNLESS NOTED OTHERWISE.
  - 14. ALL PARTITIONS TYPE 45 UNLESS NOTED OTHERWISE.
  - 15. ALL PARTITIONS TYPE 45 UNLESS NOTED OTHERWISE.
  - 16. ALL PARTITIONS TYPE 45 UNLESS NOTED OTHERWISE.
  - 17. ALL PARTITIONS TYPE 45 UNLESS NOTED OTHERWISE.
  - 18. ALL PARTITIONS TYPE 45 UNLESS NOTED OTHERWISE.
  - 19. ALL PARTITIONS TYPE 45 UNLESS NOTED OTHERWISE.
  - 20. ALL PARTITIONS TYPE 45 UNLESS NOTED OTHERWISE.
  - 21. ALL PARTITIONS TYPE 45 UNLESS NOTED OTHERWISE.
  - 22. ALL PARTITIONS TYPE 45 UNLESS NOTED OTHERWISE.
  - 23. ALL PARTITIONS TYPE 45 UNLESS NOTED OTHERWISE.
  - 24. ALL PARTITIONS TYPE 45 UNLESS NOTED OTHERWISE.
  - 25. ALL PARTITIONS TYPE 45 UNLESS NOTED OTHERWISE.
  - 26. ALL PARTITIONS TYPE 45 UNLESS NOTED OTHERWISE.
  - 27. ALL PARTITIONS TYPE 45 UNLESS NOTED OTHERWISE.
  - 28. ALL PARTITIONS TYPE 45 UNLESS NOTED OTHERWISE.
  - 29. ALL PARTITIONS TYPE 45 UNLESS NOTED OTHERWISE.
  - 30. ALL PARTITIONS TYPE 45 UNLESS NOTED OTHERWISE.
  - 31. ALL PARTITIONS TYPE 45 UNLESS NOTED OTHERWISE.
  - 32. ALL PARTITIONS TYPE 45 UNLESS NOTED OTHERWISE.
  - 33. ALL PARTITIONS TYPE 45 UNLESS NOTED OTHERWISE.
  - 34. ALL PARTITIONS TYPE 45 UNLESS NOTED OTHERWISE.
  - 35. ALL PARTITIONS TYPE 45 UNLESS NOTED OTHERWISE.
  - 36. ALL PARTITIONS TYPE 45 UNLESS NOTED OTHERWISE.
  - 37. ALL PARTITIONS TYPE 45 UNLESS NOTED OTHERWISE.
  - 38. ALL PARTITIONS TYPE 45 UNLESS NOTED OTHERWISE.
  - 39. ALL PARTITIONS TYPE 45 UNLESS NOTED OTHERWISE.
  - 40. ALL PARTITIONS TYPE 45 UNLESS NOTED OTHERWISE.
  - 41. ALL PARTITIONS TYPE 45 UNLESS NOTED OTHERWISE.
  - 42. ALL PARTITIONS TYPE 45 UNLESS NOTED OTHERWISE.
  - 43. ALL PARTITIONS TYPE 45 UNLESS NOTED OTHERWISE.
  - 44. ALL PARTITIONS TYPE 45 UNLESS NOTED OTHERWISE.
  - 45. ALL PARTITIONS TYPE 45 UNLESS NOTED OTHERWISE.
  - 46. ALL PARTITIONS TYPE 45 UNLESS NOTED OTHERWISE.
  - 47. ALL PARTITIONS TYPE 45 UNLESS NOTED OTHERWISE.
  - 48. ALL PARTITIONS TYPE 45 UNLESS NOTED OTHERWISE.
  - 49. ALL PARTITIONS TYPE 45 UNLESS NOTED OTHERWISE.
  - 50. ALL PARTITIONS TYPE 45 UNLESS NOTED OTHERWISE.
  - 51. ALL PARTITIONS TYPE 45 UNLESS NOTED OTHERWISE.
  - 52. ALL PARTITIONS TYPE 45 UNLESS NOTED OTHERWISE.
  - 53. ALL PARTITIONS TYPE 45 UNLESS NOTED OTHERWISE.
  - 54. ALL PARTITIONS TYPE 45 UNLESS NOTED OTHERWISE.
  - 55. ALL PARTITIONS TYPE 45 UNLESS NOTED OTHERWISE.
  - 56. ALL PARTITIONS TYPE 45 UNLESS NOTED OTHERWISE.
  - 57. ALL PARTITIONS TYPE 45 UNLESS NOTED OTHERWISE.
  - 58. ALL PARTITIONS TYPE 45 UNLESS NOTED OTHERWISE.
  - 59. ALL PARTITIONS TYPE 45 UNLESS NOTED OTHERWISE.
  - 60. ALL PARTITIONS TYPE 45 UNLESS NOTED OTHERWISE.
  - 61. ALL PARTITIONS TYPE 45 UNLESS NOTED OTHERWISE.
  - 62. ALL PARTITIONS TYPE 45 UNLESS NOTED OTHERWISE.
  - 63. ALL PARTITIONS TYPE 45 UNLESS NOTED OTHERWISE.
  - 64. ALL PARTITIONS TYPE 45 UNLESS NOTED OTHERWISE.
  - 65. ALL PARTITIONS TYPE 45 UNLESS NOTED OTHERWISE.
  - 66. ALL PARTITIONS TYPE 45 UNLESS NOTED OTHERWISE.
  - 67. ALL PARTITIONS TYPE 45 UNLESS NOTED OTHERWISE.
  - 68. ALL PARTITIONS TYPE 45 UNLESS NOTED OTHERWISE.
  - 69. ALL PARTITIONS TYPE 45 UNLESS NOTED OTHERWISE.
  - 70. ALL PARTITIONS TYPE 45 UNLESS NOTED OTHERWISE.
  - 71. ALL PARTITIONS TYPE 45 UNLESS NOTED OTHERWISE.
  - 72. ALL PARTITIONS TYPE 45 UNLESS NOTED OTHERWISE.
  - 73. ALL PARTITIONS TYPE 45 UNLESS NOTED OTHERWISE.
  - 74. ALL PARTITIONS TYPE 45 UNLESS NOTED OTHERWISE.
  - 75. ALL PARTITIONS TYPE 45 UNLESS NOTED OTHERWISE.
  - 76. ALL PARTITIONS TYPE 45 UNLESS NOTED OTHERWISE.
  - 77. ALL PARTITIONS TYPE 45 UNLESS NOTED OTHERWISE.
  - 78. ALL PARTITIONS TYPE 45 UNLESS NOTED OTHERWISE.
  - 79. ALL PARTITIONS TYPE 45 UNLESS NOTED OTHERWISE.
  - 80. ALL PARTITIONS TYPE 45 UNLESS NOTED OTHERWISE.
  - 81. ALL PARTITIONS TYPE 45 UNLESS NOTED OTHERWISE.
  - 82. ALL PARTITIONS TYPE 45 UNLESS NOTED OTHERWISE.
  - 83. ALL PARTITIONS TYPE 45 UNLESS NOTED OTHERWISE.
  - 84. ALL PARTITIONS TYPE 45 UNLESS NOTED OTHERWISE.
  - 85. ALL PARTITIONS TYPE 45 UNLESS NOTED OTHERWISE.
  - 86. ALL PARTITIONS TYPE 45 UNLESS NOTED OTHERWISE.
  - 87. ALL PARTITIONS TYPE 45 UNLESS NOTED OTHERWISE.
  - 88. ALL PARTITIONS TYPE 45 UNLESS NOTED OTHERWISE.
  - 89. ALL PARTITIONS TYPE 45 UNLESS NOTED OTHERWISE.
  - 90. ALL PARTITIONS TYPE 45 UNLESS NOTED OTHERWISE.
  - 91. ALL PARTITIONS TYPE 45 UNLESS NOTED OTHERWISE.
  - 92. ALL PARTITIONS TYPE 45 UNLESS NOTED OTHERWISE.
  - 93. ALL PARTITIONS TYPE 45 UNLESS NOTED OTHERWISE.
  - 94. ALL PARTITIONS TYPE 45 UNLESS NOTED OTHERWISE.
  - 95. ALL PARTITIONS TYPE 45 UNLESS NOTED OTHERWISE.
  - 96. ALL PARTITIONS TYPE 45 UNLESS NOTED OTHERWISE.
  - 97. ALL PARTITIONS TYPE 45 UNLESS NOTED OTHERWISE.
  - 98. ALL PARTITIONS TYPE 45 UNLESS NOTED OTHERWISE.
  - 99. ALL PARTITIONS TYPE 45 UNLESS NOTED OTHERWISE.
  - 100. ALL PARTITIONS TYPE 45 UNLESS NOTED OTHERWISE.



1 SECOND FLOOR OVERALL FLOOR PLAN