

# Town Creek Elementary School

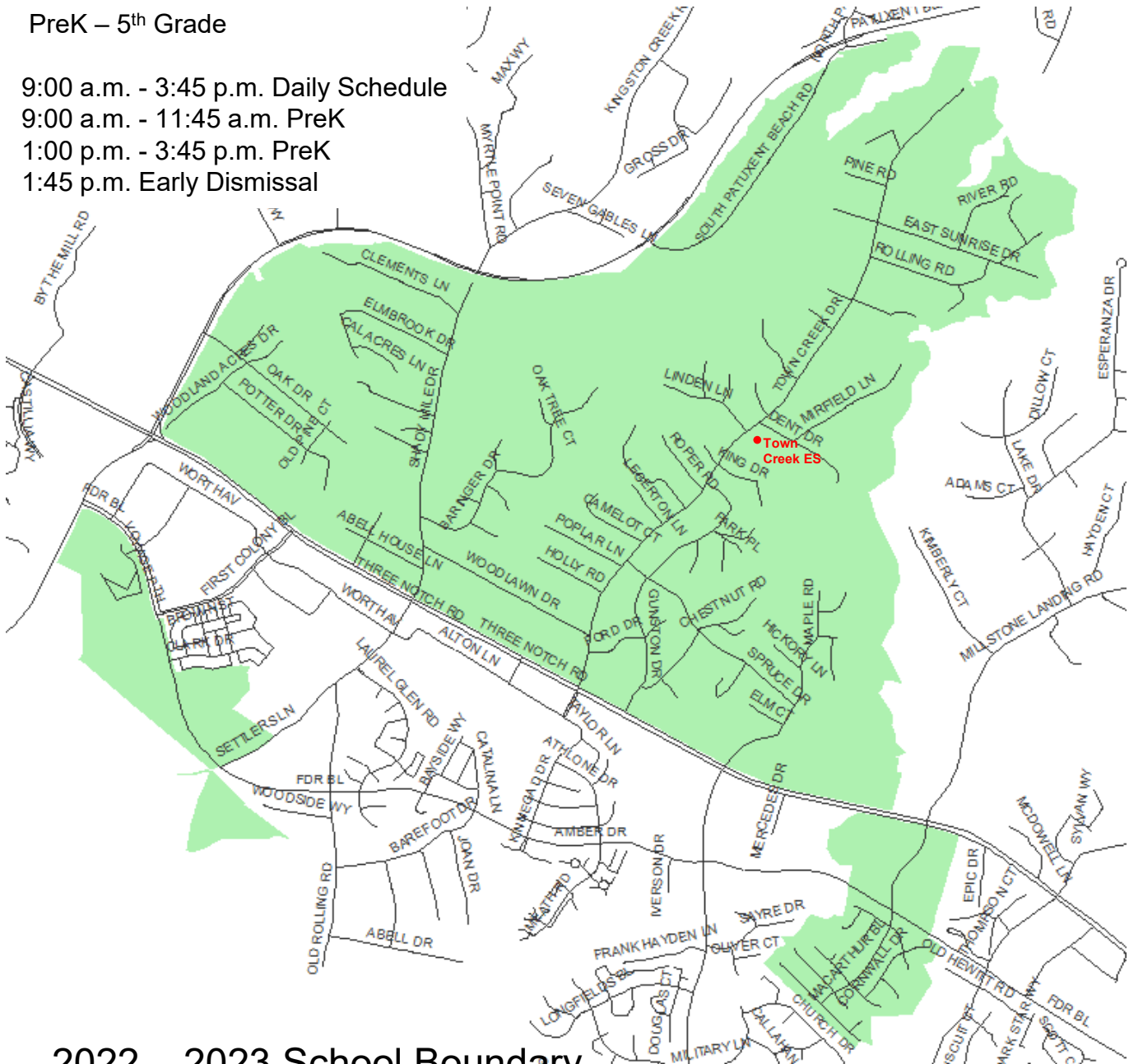
45805 Dent Drive  
Lexington Park, MD 20653  
(301) 863-4044

St. Mary's County Public Schools  
Department of Capital Planning  
27190 Point Lookout Road  
Loveville, MD 20656  
(301) 475-4256, ext. 6



PreK – 5<sup>th</sup> Grade

9:00 a.m. - 3:45 p.m. Daily Schedule  
9:00 a.m. - 11:45 a.m. PreK  
1:00 p.m. - 3:45 p.m. PreK  
1:45 p.m. Early Dismissal



## 2022 – 2023 School Boundary

The information provided is only a guide to SMCPS school district boundaries and facilities. SMCPS has made substantial efforts to ensure the accuracy of the information. However, school boundary and facility information are subject to change. School boundaries may be unreliable for residents in new subdivisions or residents near a school district boundary. The user of this information understands the statements above and is taking full liability for any use of the data. For verification of any school boundary, please call the Department of Capital Planning at 301-475-4256, extension 6.

MacArthur Boulevard and all auxiliary roads. Northbound Route 235 and all auxiliary roads, from, but not including Millstone Landing Road to Route 4. Eastbound Route 4 and all auxiliary roads, from Route 235 to the Governor Thomas Johnson Bridge. The development of Settlers Landing.