



mahlum

Mercer Island School District Long-Range Facility Master Plan

08 AUGUST 2019



19+

Higher Education
Master Plans

35+

PreK-12
Long-Range
Facility Plans

24+

years working with
Mercer Island
School District

Team Expertise



JoAnn Hindmarsh Wilcox
AIA LEED AP
Principal-In-Charge



LeRoy Landers
AIA
Planning Principal



Becky Hutchinson
AIA
Project Manager



Jennifer Lubin
AIA
Data Analysis

Team Expertise

SELECTED RECENT K-12 PLANNING PROJECTS

Mercer Island School District :: Megablock Master Plan

Seattle Girls' School :: Campus Master Plan

Bellevue Christian School :: Clyde Hill Campus Master Plan & Modernization

CRISTA King's Schools :: Master Plan

St. Mary's Dominican High School :: Master Plan

Community School :: Sagewillow Campus Programming & Planning

Newberg School District :: LRFP

Forest Grove School District :: LRFP

Eugene School District :: High School Educational Specifications & LRFP

Beaverton School District :: Futures Study

The International School :: Master Plan Update

Portland Public Schools :: Districtwide Planning

Eugene School District :: North Eugene High School Master Plan

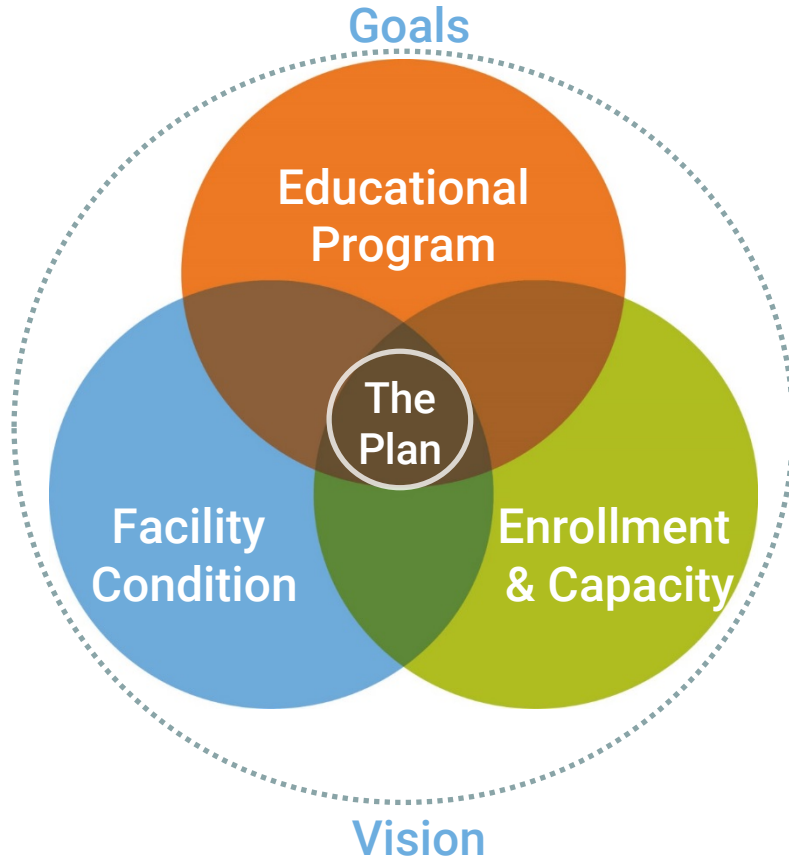
North Clackamas School District :: LRFP

David Douglas School District :: LRFP

Dayton School District :: LRFP

Process Framework

Comprehensive Summary of Need



Goals & Vision

Strategic Plan
Education Specification

Educational Program

Strategic Plan
Education Specification
Kindergarten / Pre-K
PE / Athletics
STEM | STEAM
Career Technical Education
Technology
Target Capacities

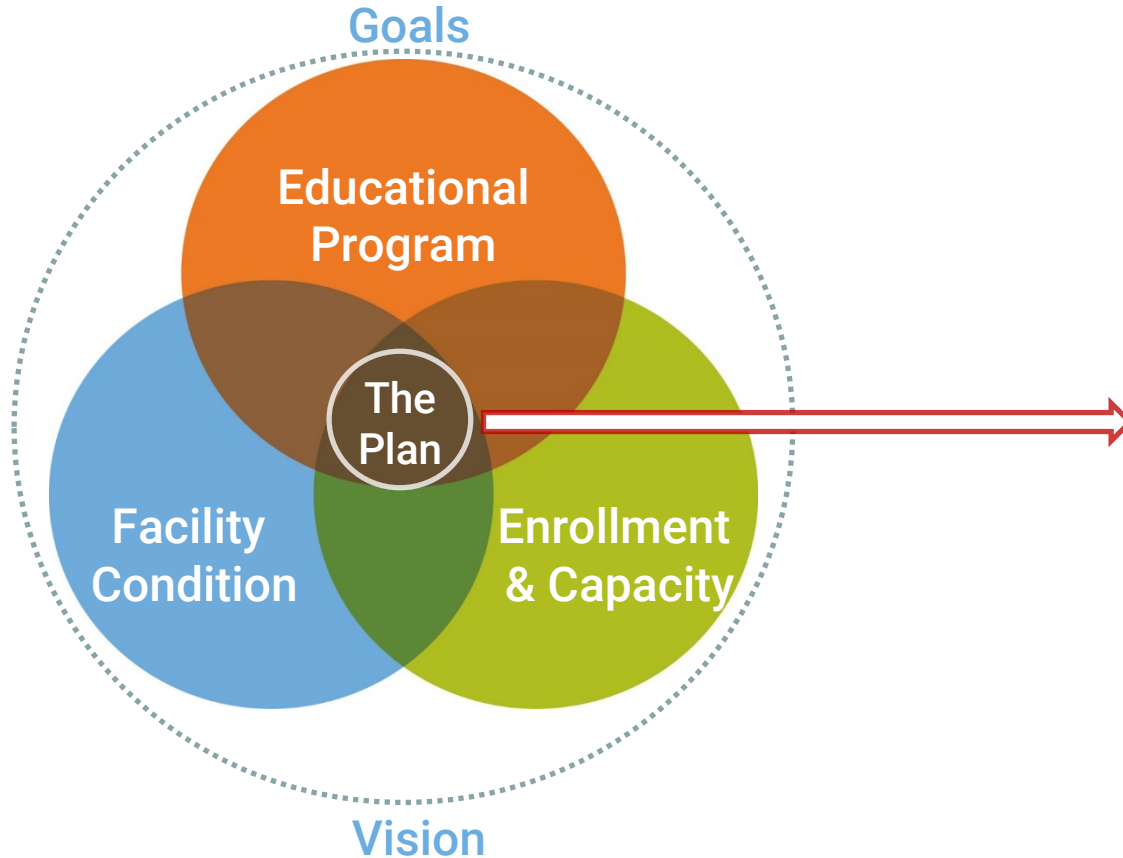
Enrollment & Capacity

Growth
Utilization
Boundaries
Consolidation

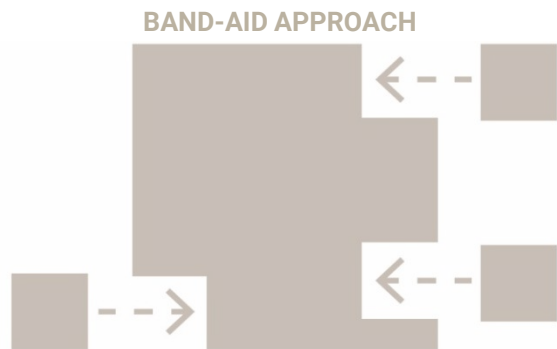
Facility Condition

Health and Safety
Accessibility (ADA)
Infrastructure
Sustainability
Life Expectancy
Academic Suitability

Comprehensive Summary of Need



Tools for Strategic Management of Facilities Over Time



Provides the information needed to make well informed decisions

Allows coordination with jurisdictions regarding development in your district

Keeps your community informed and builds community support



Establishes an ongoing cycle for keeping your capital investments up to date

Helps districts avoid doing something now that you have to undo later

Keys to Success

Don't go in with the answer

Do go in with an understanding of your goals and facility shortcomings

Summarize information and provide adequate time for your committee to talk

Build the plan around REAL community participation to build trust

Allow time for community outreach

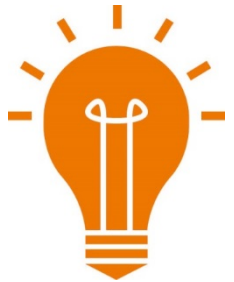
Everyone should get something

The core message should meet the “3 C’s”: Clear, Concise, Compelling

Understand that facilities will require ongoing repair, maintenance, and replacement

Remind the committee that no promises are being made

Be prepared — everyone may not fully agree!



Process Discussion

Participants

District Leadership Team (5-8)



Facilities Review Committee



Community Engagement



Participants

District Leadership Team (5-8)



Superintendent | Assistant Superintendent

CFO | COO

Facilities

Learning Services

Communications

Facilities Review Committee



Community Engagement



Participants

District Leadership Team (5-8)



Facilities Review Committee (30-40)



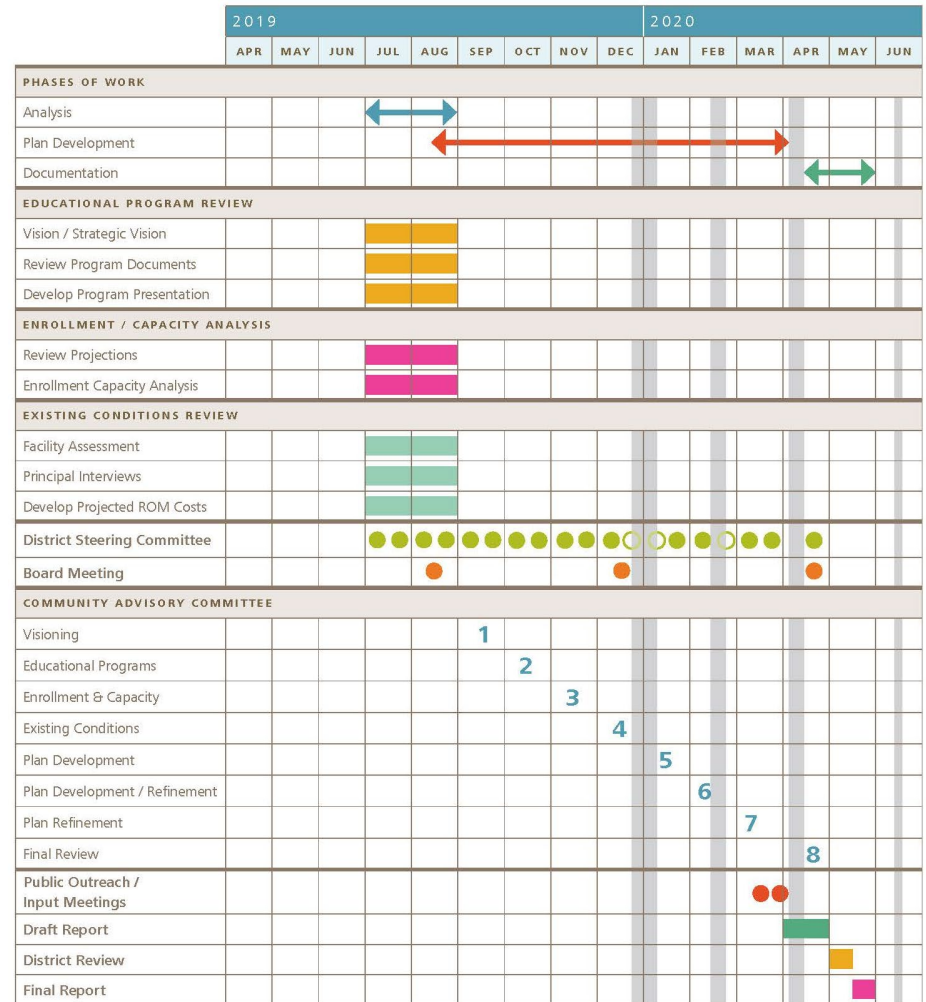
Community Engagement



- (2) Board member(s)
- (4-6) Representation from different school and neighborhood councils
- (4-6) Parents with children in the district
- (4-6) Parents who have had children in the district
- (4-6) Retired community members
- (2-3) Current students (high school)
- (1-2) Foundation members
- (4-6) Representation from ethnic communities
- (1-2) Representative from community sports organizations
- (4-6) Representation from community organizations (i.e. Kiwanis, Chamber of Commerce, Rotary, etc.)
- (2-4) Local business leaders
- (1-2) City Planning representative(s)
- (1-2) Known partners or partnership candidates (i.e. Parks Department)
- (1-2) Community historians/activists

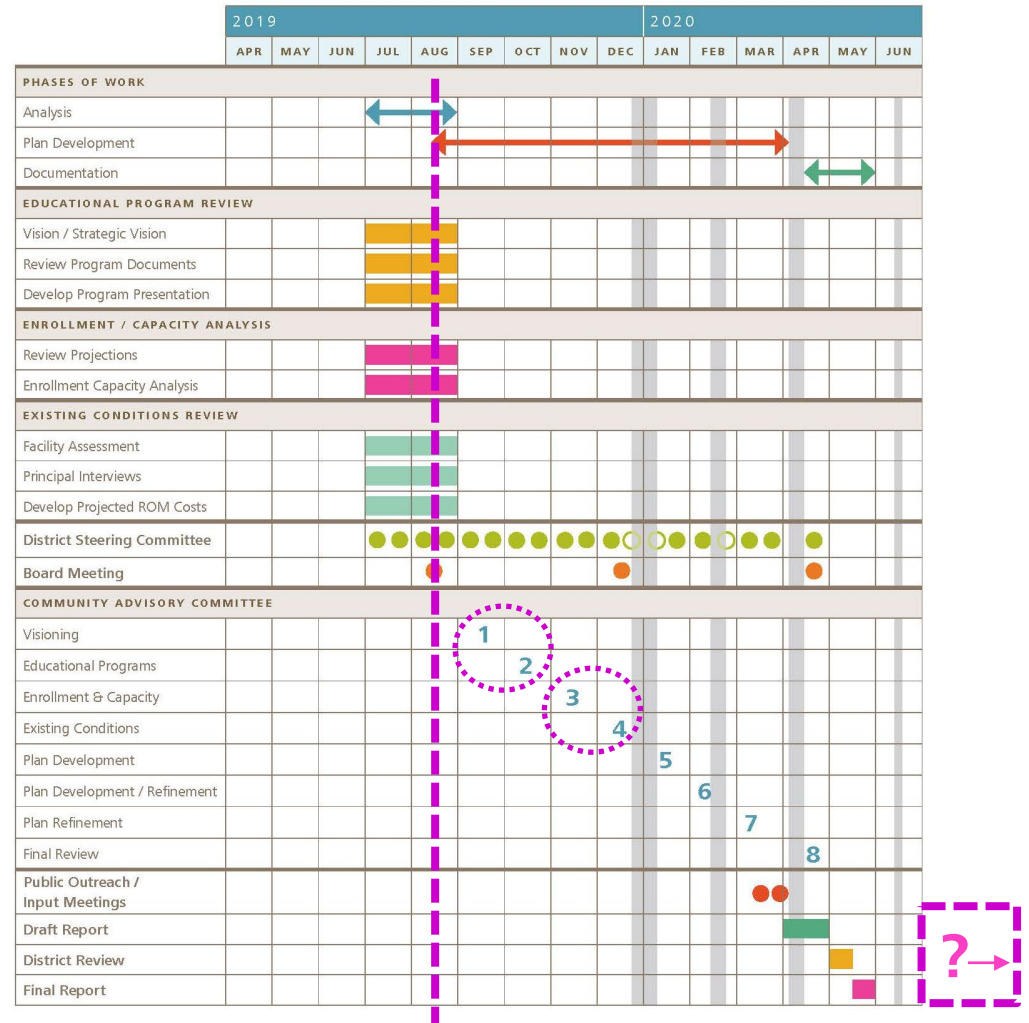
Process

July Start Proposal



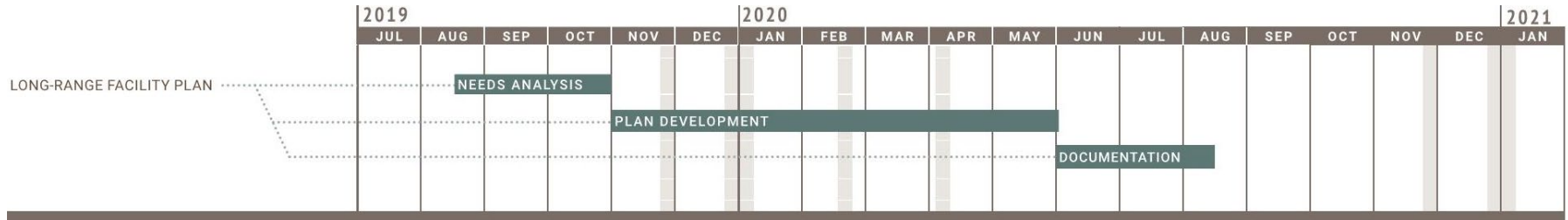
Process

July Start Proposal

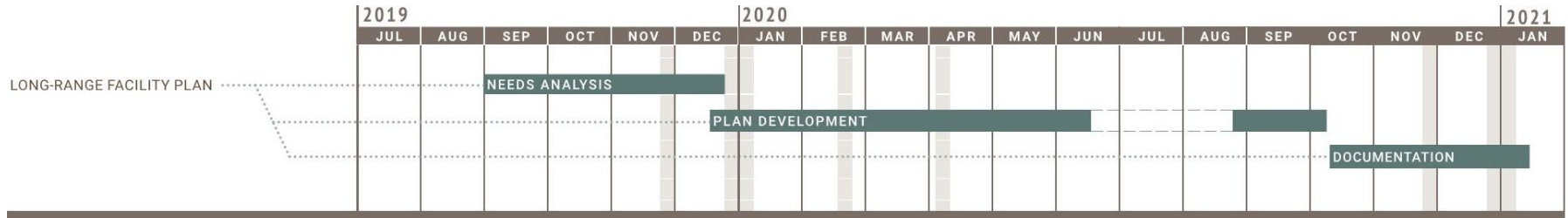


Process: Two Options

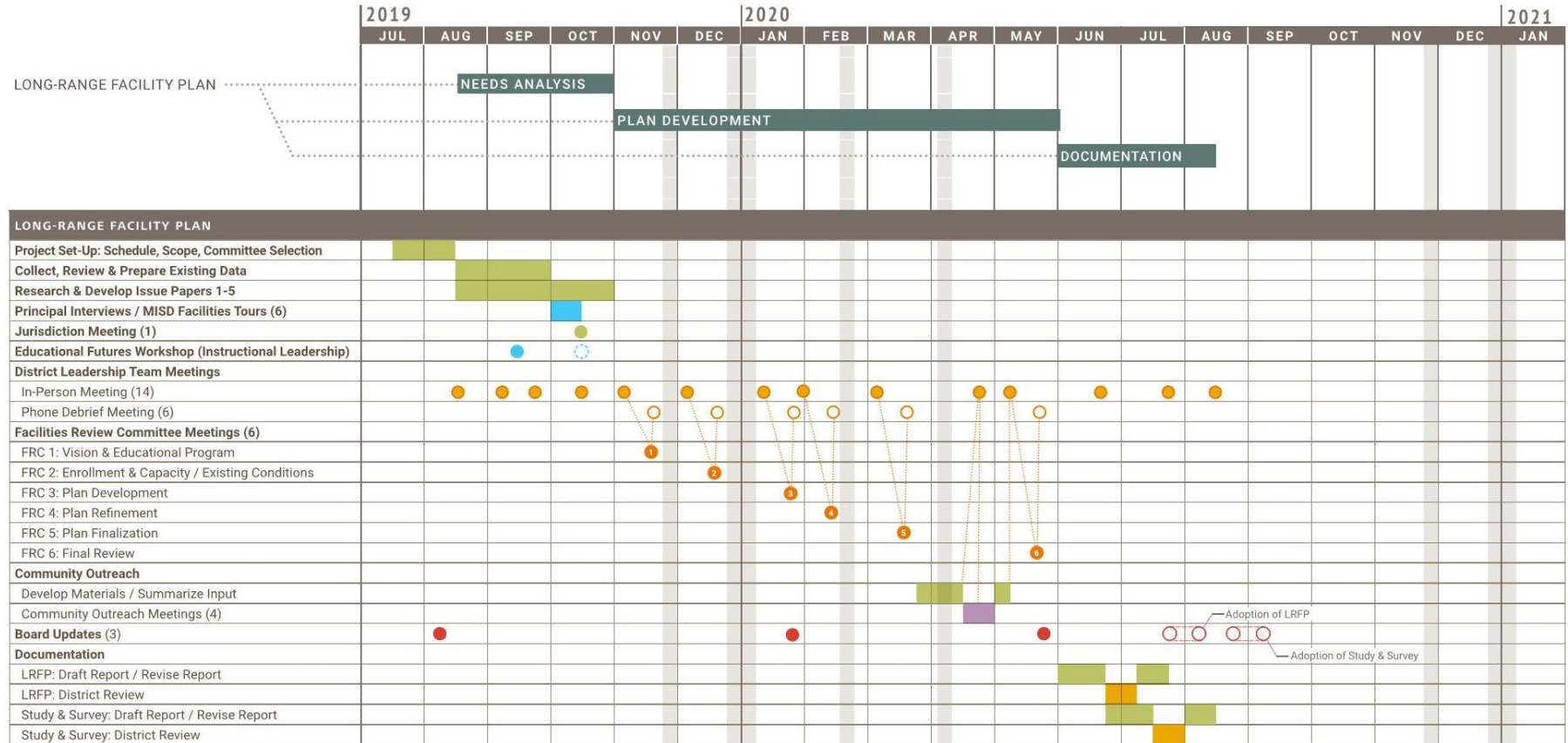
OPTION 1: Recommended



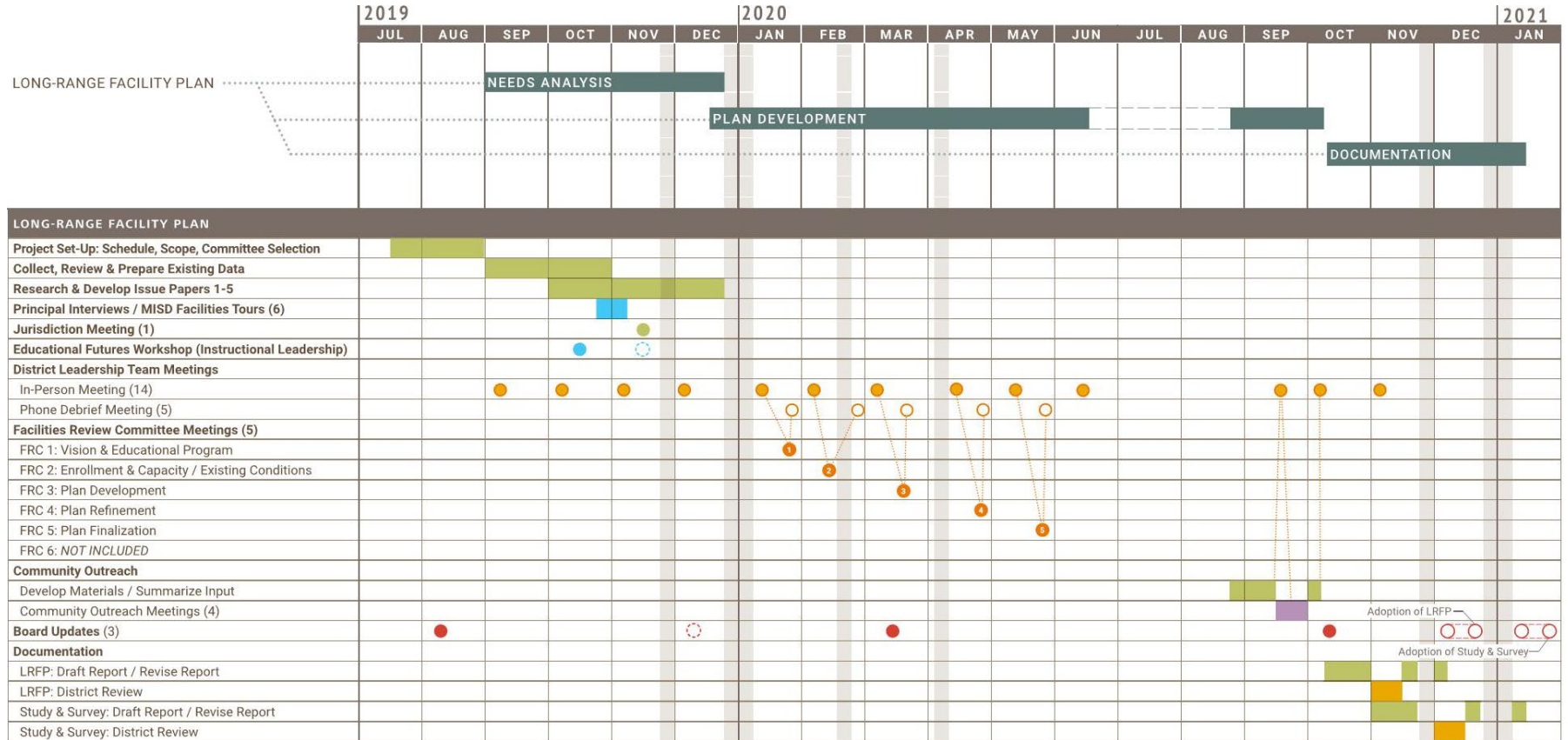
OPTION 2



OPTION 1 (Recommended)



OPTION 2



Enhanced Process Options

During the Process

- : Online community engagement (information and survey)
- : Early community outreach meetings
- : In-depth Board workshop(s)

End of the Process

- : Online community engagement (summary)

Online Community Engagement: Process Updates & Input

Allows broader community to understand issues being considered during the planning process, track progress, and provide input

District website platform

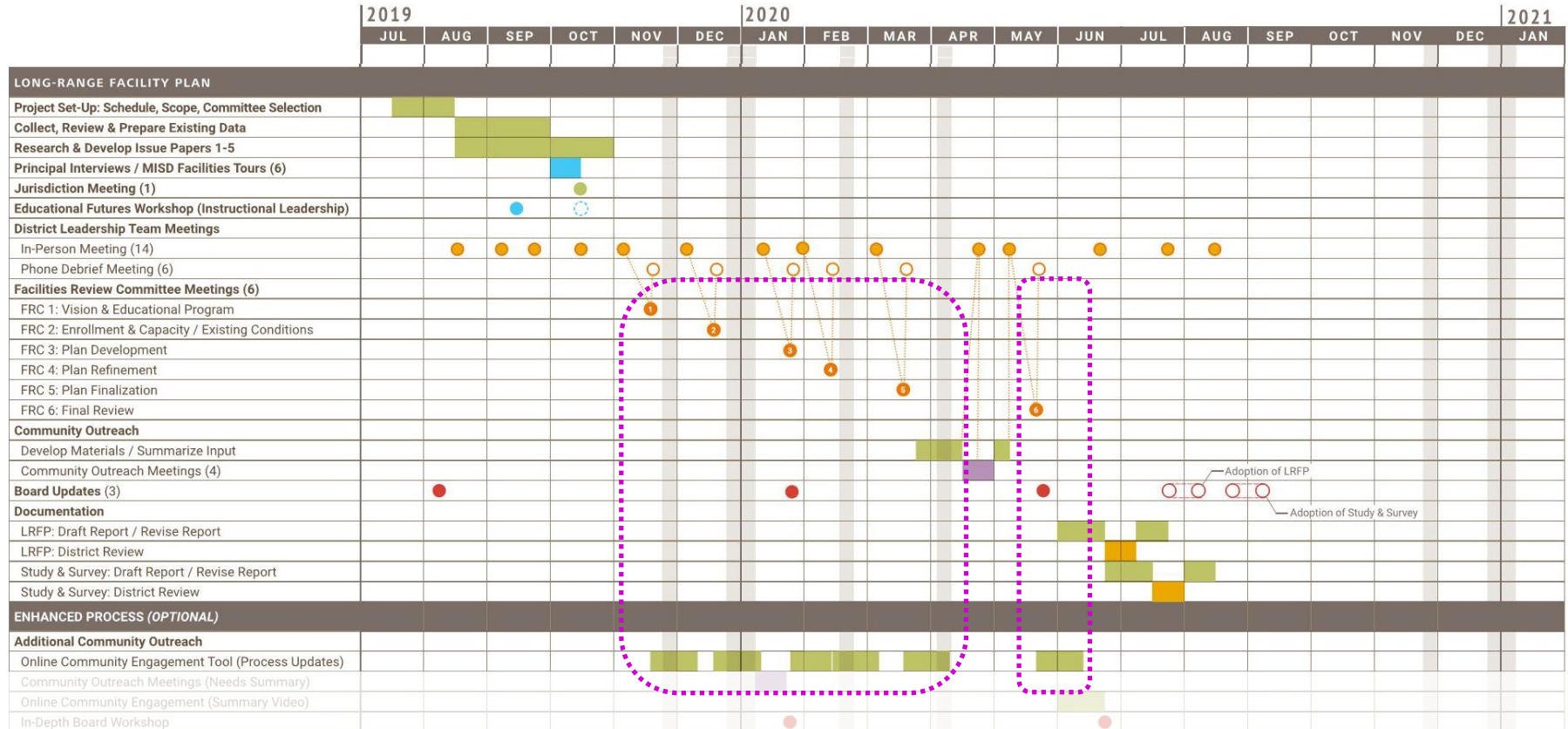
May include online polling component

Information posted after each FRC meeting

Online community input documented and presented at next FRC meeting



OPTION 1 :: Online Engagement Enhancement



Early Community Outreach Meetings: Needs Summary & Input

Allows broader community the opportunity to come alongside the FRC in their understanding of issues being considered during the planning process, and help establish the community priorities

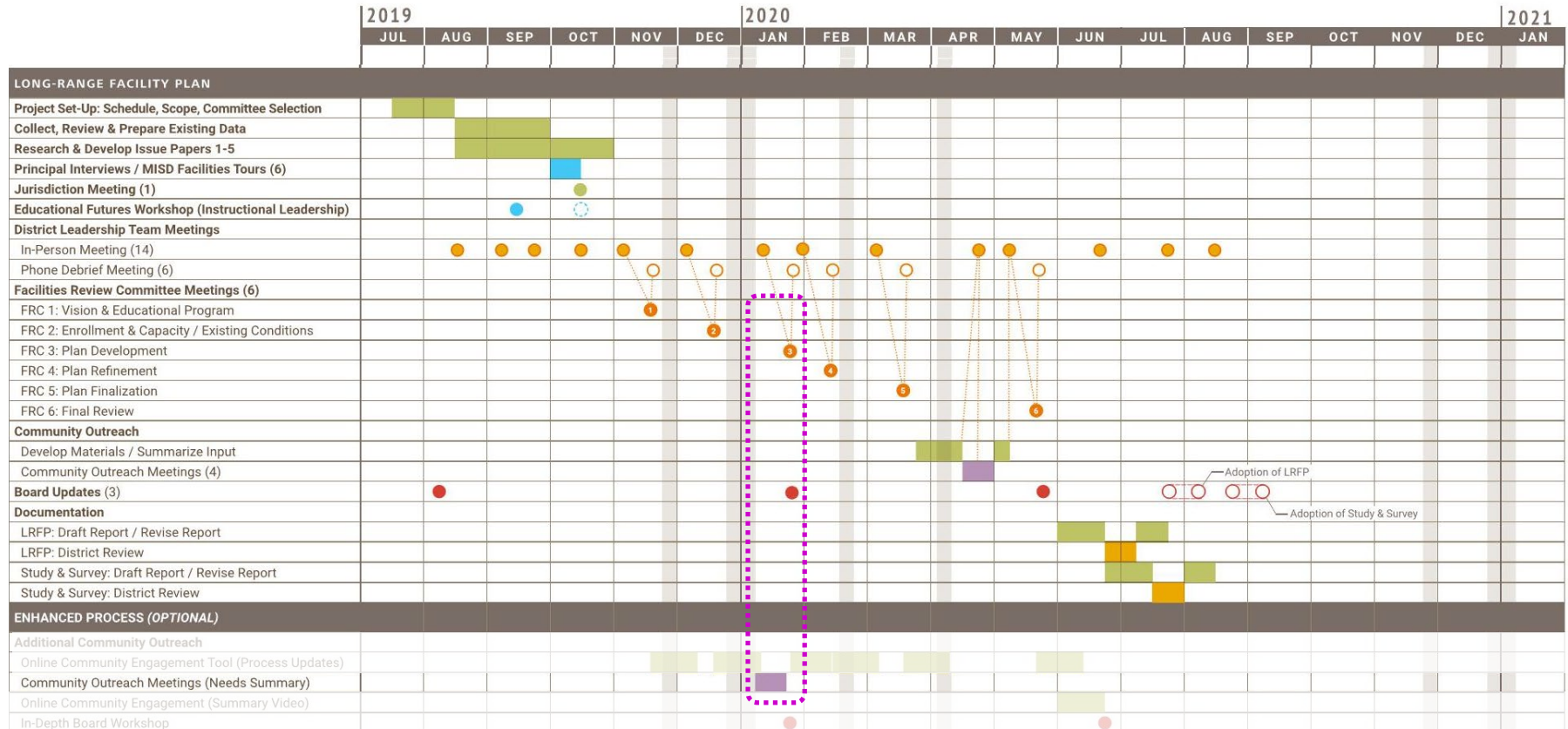
Summary of needs analysis (FRC meetings 1 and 2) with the opportunity for participants to offer formative feedback prior to plan development

Opportunity for enhanced process transparency

Community meetings would be offered at multiple venues and times



OPTION 1 :: Early Community Input Enhancement



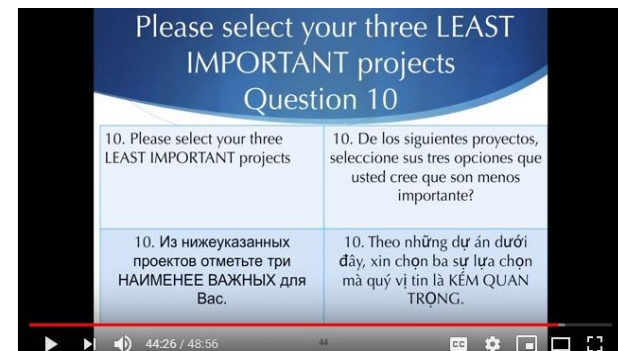
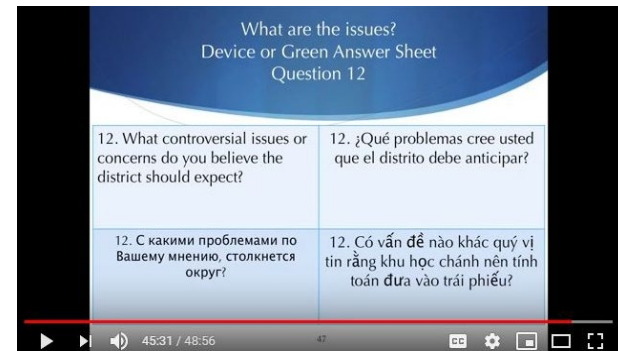
Online Community Engagement: Summary Video

Allows broader community to access a concise summary at the end of the process

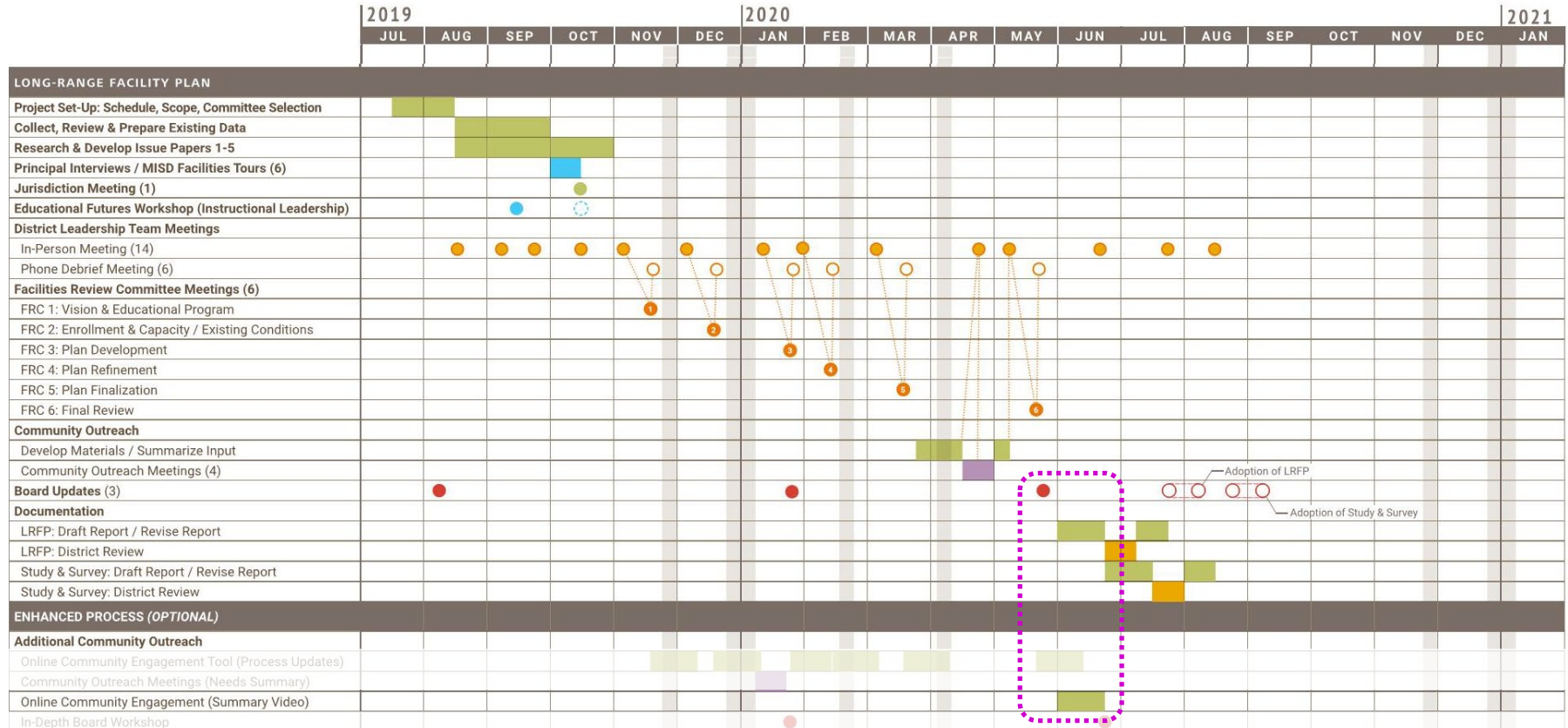
Video summary of the planning process, considerations, plan options, and/or preferred plan approach

Prepared after all FRC meetings are completed and a preferred approach is established

Could be paired with an online polling tool that would allow community viewers to provide input to the plan



OPTION 1 :: Online Summary Video Enhancement

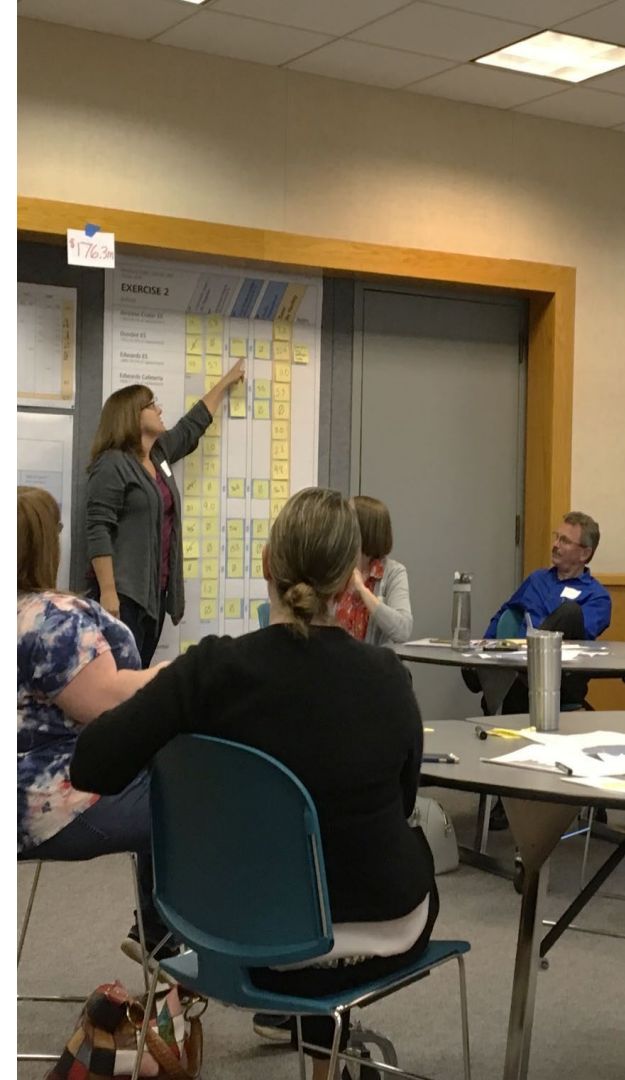


In-Depth Board Workshop: Process and/or Summary

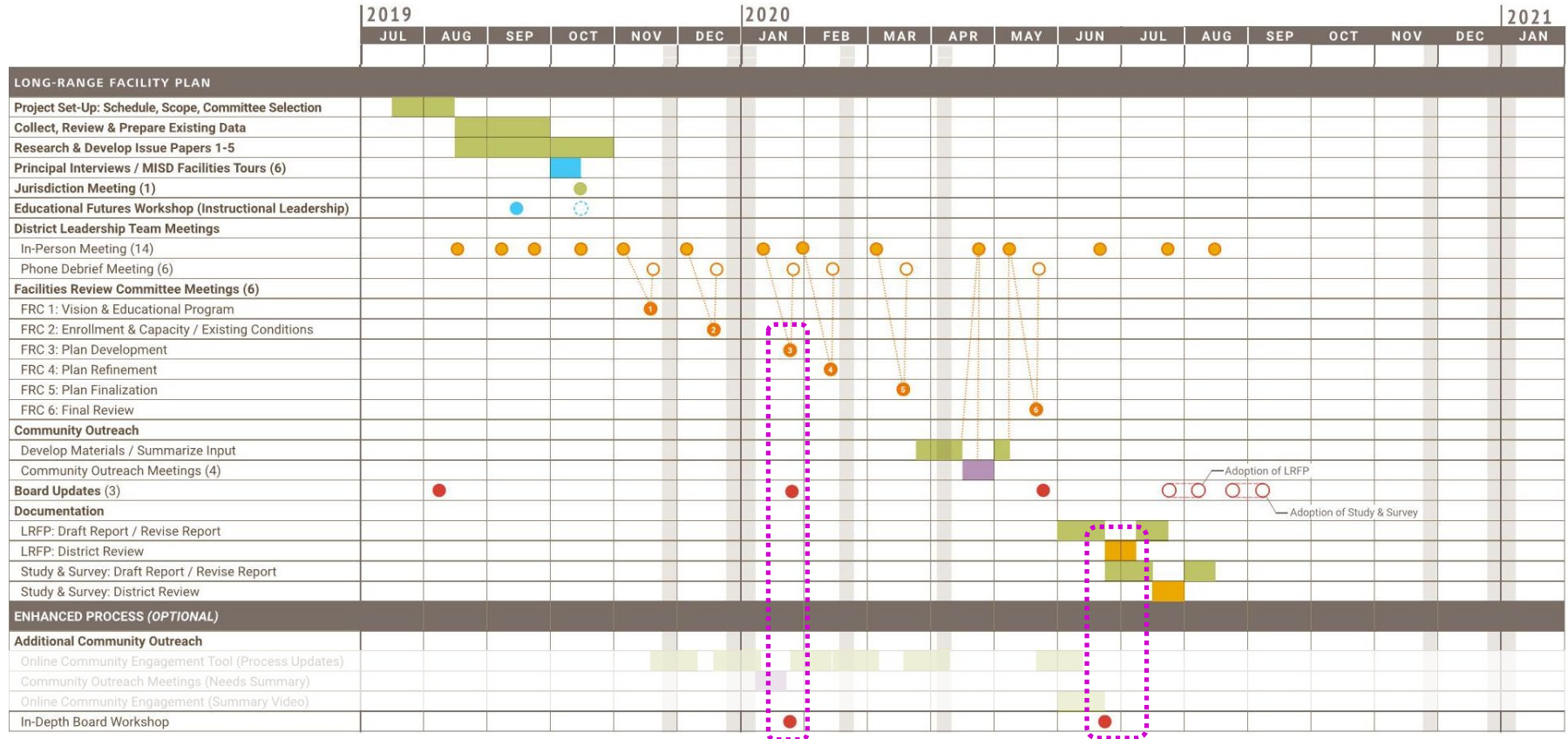
Allows all Board members an opportunity to understand and weigh FRC and community input as needed

Partial or full day Board workshop format

Can be done independent of or in conjunction with the Board Retreat, as desired



OPTION 1 :: Board Workshop Enhancement(s)



Questions?

Thank You!